



wwPDB EM Validation Summary Report ⓘ

Feb 1, 2021 – 02:02 PM GMT

EMDB ID : EMD-11942
Title : "Tubulin glycylation controls axonemal dynein activity, flagellar beat and male fertility": Pre-pre-power stroke conformation of the mouse sperm outer dynein arms (ODAs). Both beta- and gamma-heavy chains are in pre-power stroke conformation. Cryo-ET, classification and sub-tomogram averaging.
Authors : Gadadhar, S.; Alvarez Viar, G.; Hansen, J.N.; Gong, A.; Kostarev, A.; Ialy-Radio, C.; Leboucher, S.; Whitfield, M.; Ziyat, A.; Toure, A.; Alvarez, L.; Pigino, G.; Janke, C.
Deposited on : 2020-11-16
Resolution : 24.70 Å(reported)

This is a wwPDB EM Validation Summary Report for a publicly released PDB entry.

We welcome your comments at validation@mail.wwpdb.org

A user guide is available at

<https://www.wwpdb.org/validation/2017/EMMapValidationReportHelp>

with specific help available everywhere you see the ⓘ symbol.

The following versions of software and data (see [references ⓘ](#)) were used in the production of this report:

EMDB validation analysis : 0.0.0.dev61
Validation Pipeline (wwPDB-VP) : 2.16

1 Experimental information

Property	Value	Source
EM reconstruction method	SUBTOMOGRAM AVERAGING	Depositor
Imposed symmetry	2D CRYSTAL, $a=76 \text{ \AA}$, $b=60 \text{ \AA}$, $c=39 \text{ \AA}$, $\gamma=90^\circ$, space group=C 1 2	Depositor
Number of subtomograms used	1426	Depositor
Resolution determination method	FSC 0.143 CUT-OFF	Depositor
CTF correction method	Not provided	
Microscope	FEI TITAN	Depositor
Voltage (kV)	300	Depositor
Electron dose ($e^-/\text{\AA}^2$)	100.0	Depositor
Minimum defocus (nm)	Not provided	
Maximum defocus (nm)	Not provided	
Magnification	Not provided	
Image detector	GATAN K2 SUMMIT (4k x 4k)	Depositor
Maximum map value	32.507	Depositor
Minimum map value	-22.475	Depositor
Average map value	1.334	Depositor
Map value standard deviation	7.366	Depositor
Recommended contour level	6.54	Depositor
Map size (\AA)	716.072, 565.32, 367.458	wwPDB
Map dimensions	76, 60, 39	wwPDB
Map angles ($^\circ$)	90.0, 90.0, 90.0	wwPDB
Pixel spacing (\AA)	9.422, 9.422, 9.422	Depositor

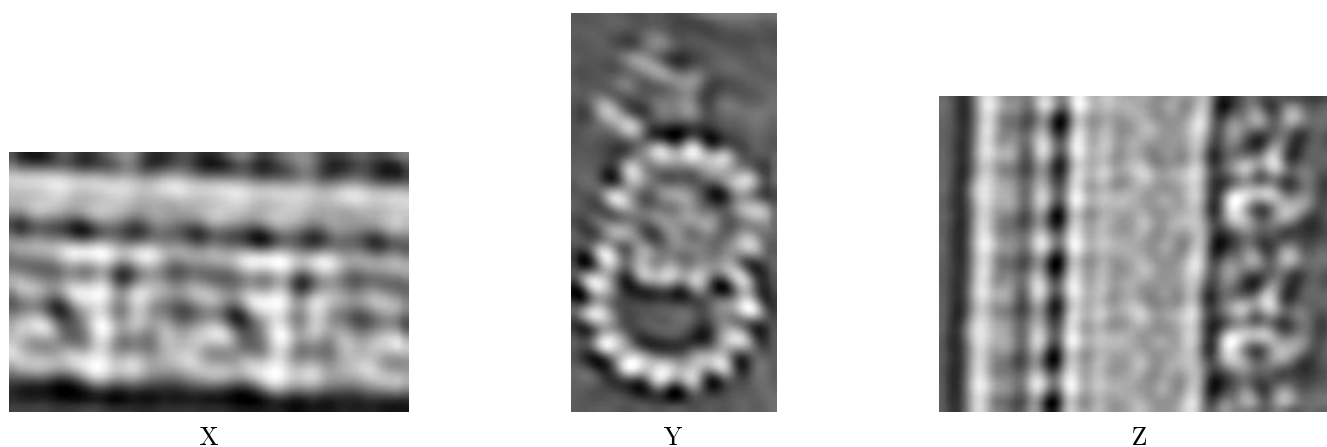
2 Map visualisation [i](#)

This section contains visualisations of the EMDB entry EMD-11942. These allow visual inspection of the internal detail of the map and identification of artifacts.

No raw map or half-maps were deposited for this entry and therefore no images, graphs, etc. pertaining to the raw map can be shown.

2.1 Orthogonal projections [i](#)

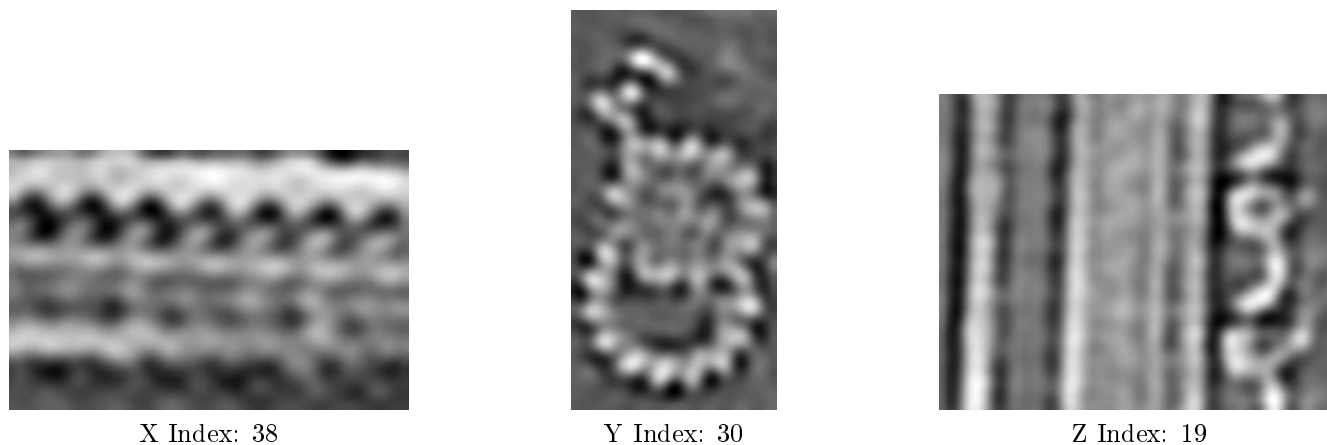
2.1.1 Primary map



The images above show the map projected in three orthogonal directions.

2.2 Central slices [i](#)

2.2.1 Primary map



The images above show central slices of the map in three orthogonal directions.

2.3 Largest variance slices [i](#)

2.3.1 Primary map



X Index: 9



Y Index: 36

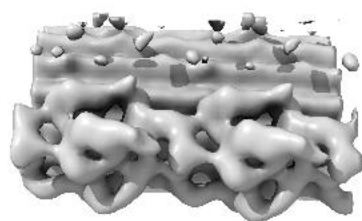


Z Index: 11

The images above show the largest variance slices of the map in three orthogonal directions.

2.4 Orthogonal surface views [i](#)

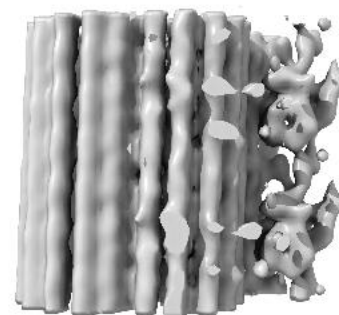
2.4.1 Primary map



X



Y



Z

The images above show the 3D surface view of the map at the recommended contour level 6.54. These images, in conjunction with the slice images, may facilitate assessment of whether an appropriate contour level has been provided.

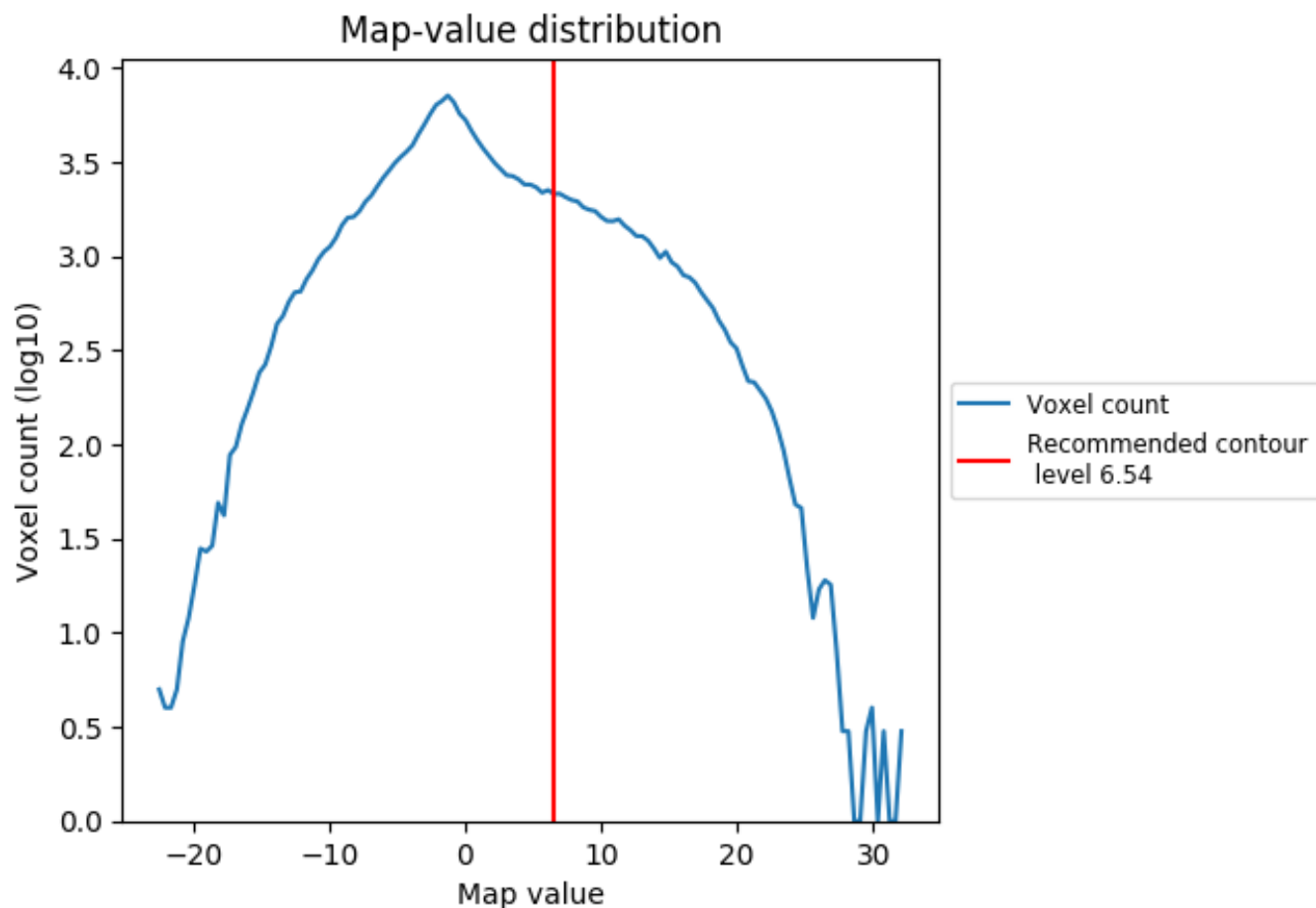
2.5 Mask visualisation

This section was not generated. No masks/segmentation were deposited.

3 Map analysis [i](#)

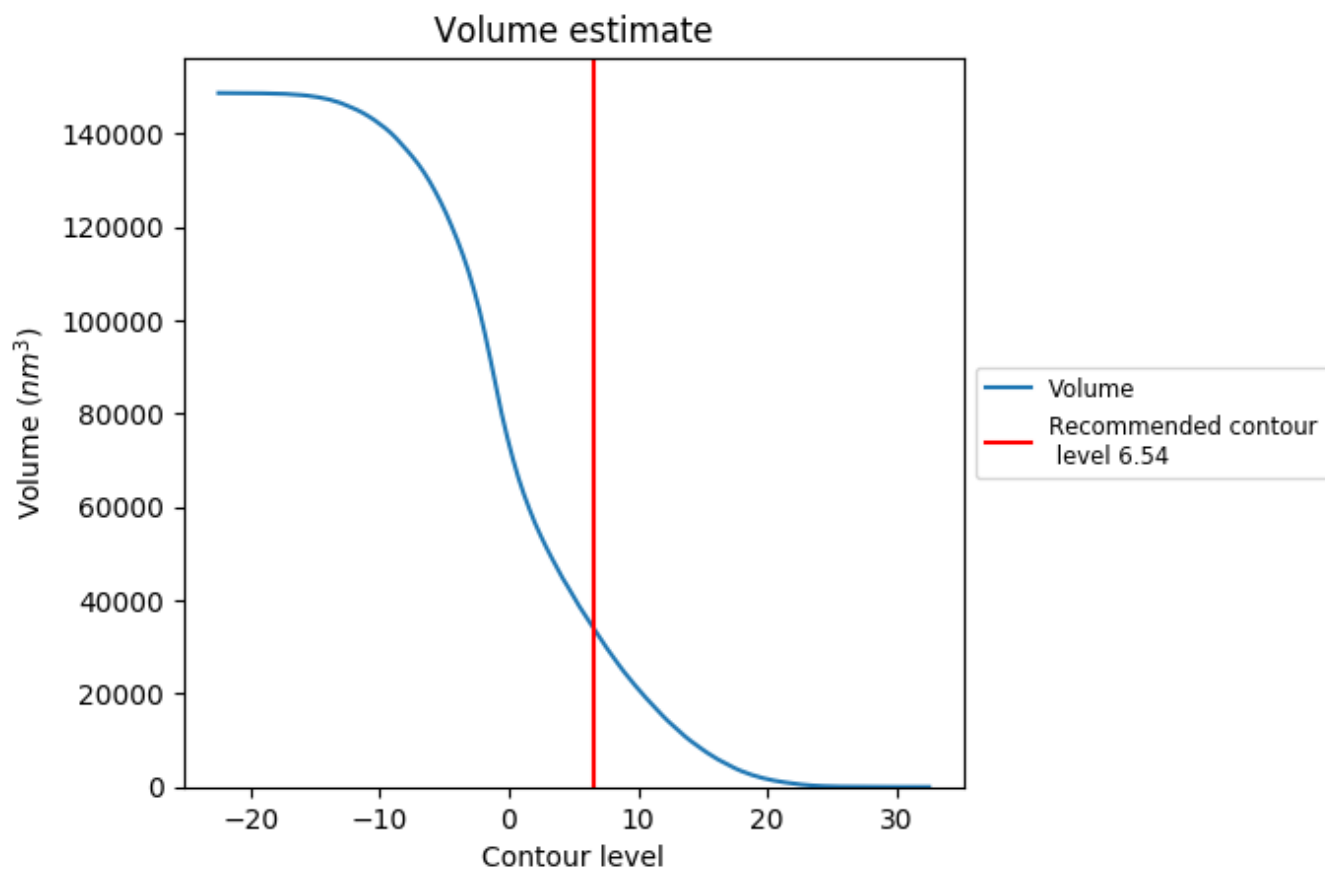
This section contains the results of statistical analysis of the map.

3.1 Map-value distribution [i](#)



The map-value distribution is plotted in 128 intervals along the x-axis. The y-axis is logarithmic. A spike in this graph at zero usually indicates that the volume has been masked.

3.2 Volume estimate [i](#)



The volume at the recommended contour level is 34063 nm³; this corresponds to an approximate mass of 30770 kDa.

The volume estimate graph shows how the enclosed volume varies with the contour level. The recommended contour level is shown as a vertical line and the intersection between the line and the curve gives the volume of the enclosed surface at the given level.

3.3 Rotationally averaged power spectrum [i](#)

This section was not generated. The rotationally averaged power spectrum is only generated for cubic maps.

4 Fourier-Shell correlation

This section was not generated. No FSC curve or half-maps provided.