



wwPDB EM Validation Summary Report ⓘ

Mar 31, 2021 – 10:07 am BST

EMDB ID : EMD-1907
Title : Electron cryo-microscopy and image reconstruction of adeno-associated virus type 2 empty capsids
Authors : Kronenberg, S.; Kleinschmidt, J.A.; Bottcher, B.
Deposited on : 2011-06-10
Resolution : 10.50 Å(reported)

This is a wwPDB EM Validation Summary Report for a publicly released PDB entry.

We welcome your comments at validation@mail.wwpdb.org

A user guide is available at

<https://www.wwpdb.org/validation/2017/EMMapValidationReportHelp>

with specific help available everywhere you see the ⓘ symbol.

The following versions of software and data (see [references ⓘ](#)) were used in the production of this report:

EMDB validation analysis : 0.0.0.dev75
Validation Pipeline (wwPDB-VP) : 2.18

1 Experimental information

Property	Value	Source
EM reconstruction method	SINGLE PARTICLE	Depositor
Imposed symmetry	Not Provided	
Number of particles used	1800	Depositor
Resolution determination method	FSC 0.5 CUT-OFF	Depositor
CTF correction method	Combination of defocussed maps	Depositor
Microscope	FEI/PHILIPS CM120T	Depositor
Voltage (kV)	100	Depositor
Electron dose ($e^-/\text{\AA}^2$)	Not provided	
Minimum defocus (nm)	0.81	Depositor
Maximum defocus (nm)	1.93	Depositor
Magnification	52000.0	Depositor
Image detector	KODAK SO-163 FILM	Depositor
Maximum map value	61.092	Depositor
Minimum map value	-44.559	Depositor
Average map value	-0.044	Depositor
Map value standard deviation	9.893	Depositor
Recommended contour level	12.0	Depositor
Map size (Å)	348.6, 348.6, 348.6	wwPDB
Map dimensions	83, 83, 83	wwPDB
Map angles (°)	90, 90, 90	wwPDB
Pixel spacing (Å)	4.2, 4.2, 4.2	Depositor

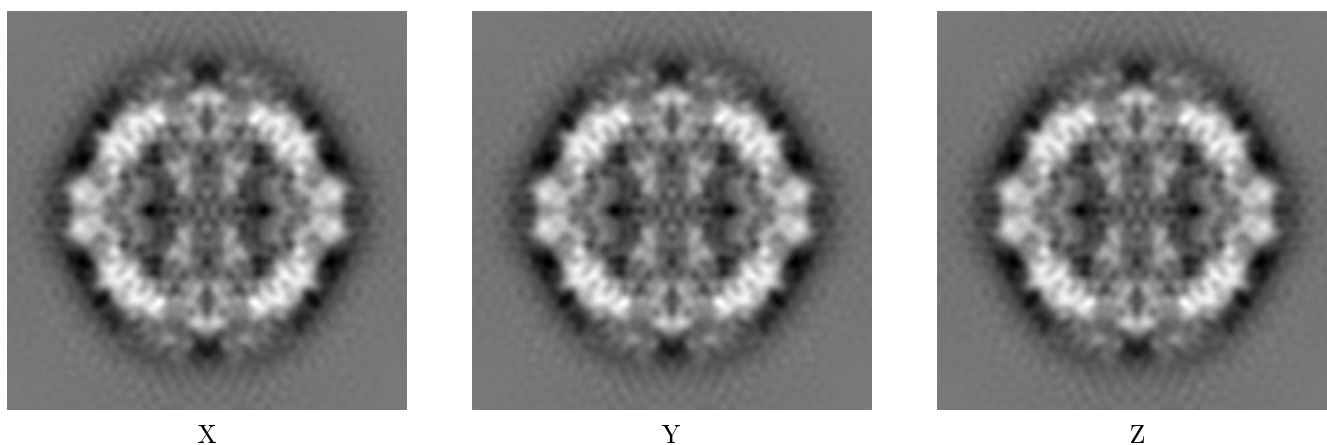
2 Map visualisation [i](#)

This section contains visualisations of the EMDB entry EMD-1907. These allow visual inspection of the internal detail of the map and identification of artifacts.

No raw map or half-maps were deposited for this entry and therefore no images, graphs, etc. pertaining to the raw map can be shown.

2.1 Orthogonal projections [i](#)

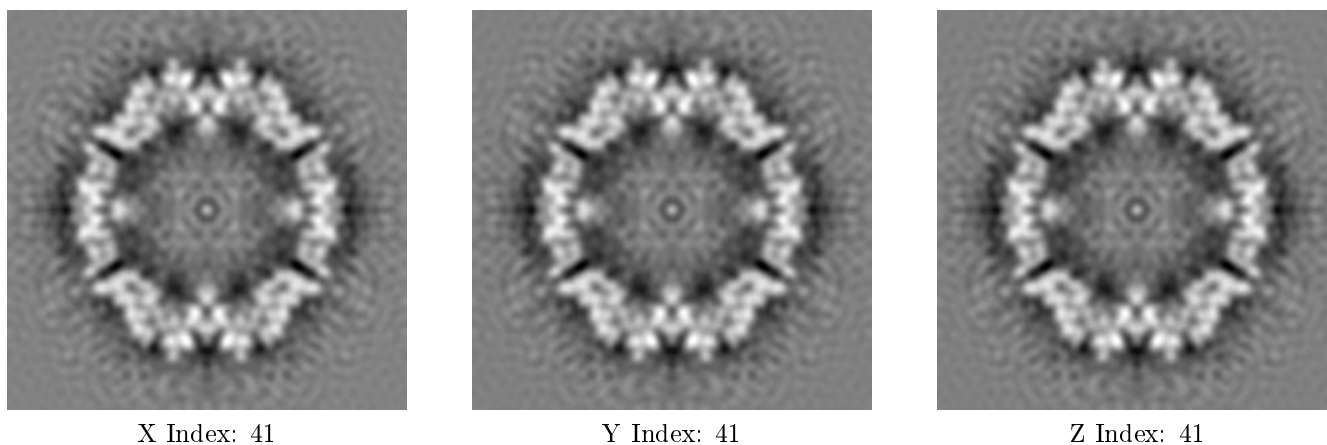
2.1.1 Primary map



The images above show the map projected in three orthogonal directions.

2.2 Central slices [i](#)

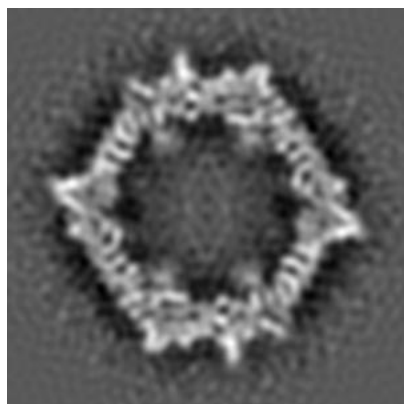
2.2.1 Primary map



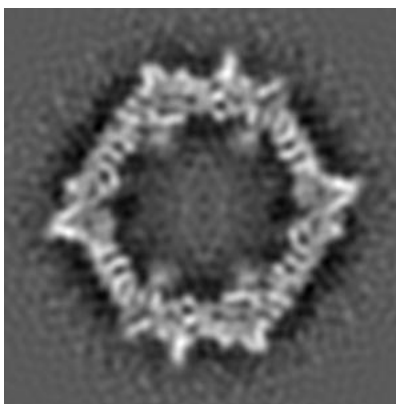
The images above show central slices of the map in three orthogonal directions.

2.3 Largest variance slices [i](#)

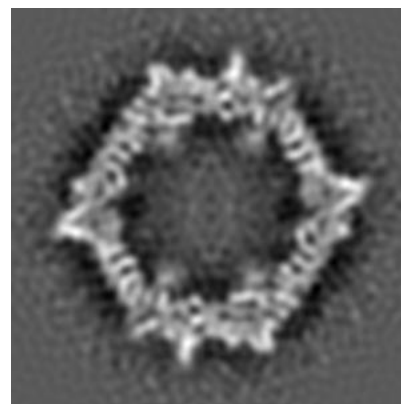
2.3.1 Primary map



X Index: 46



Y Index: 36

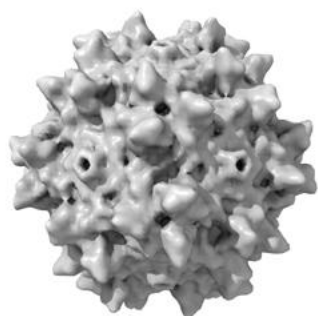


Z Index: 36

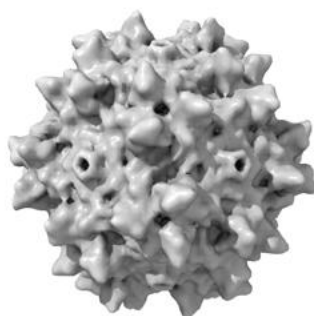
The images above show the largest variance slices of the map in three orthogonal directions.

2.4 Orthogonal surface views [i](#)

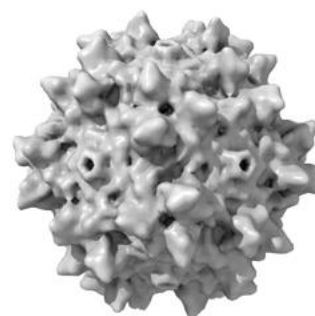
2.4.1 Primary map



X



Y



Z

The images above show the 3D surface view of the map at the recommended contour level 12.0. These images, in conjunction with the slice images, may facilitate assessment of whether an appropriate contour level has been provided.

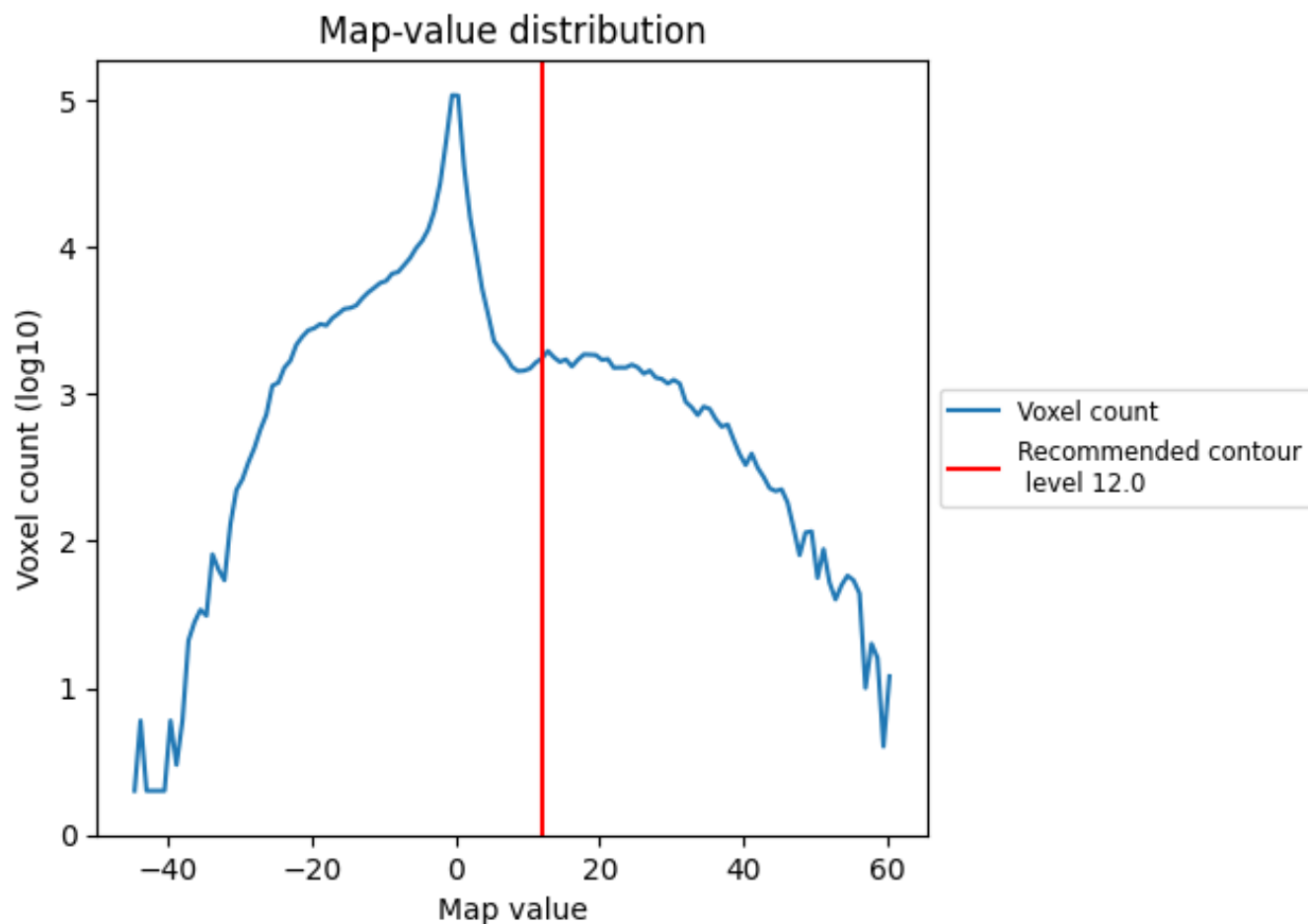
2.5 Mask visualisation

This section was not generated. No masks/segmentation were deposited.

3 Map analysis [i](#)

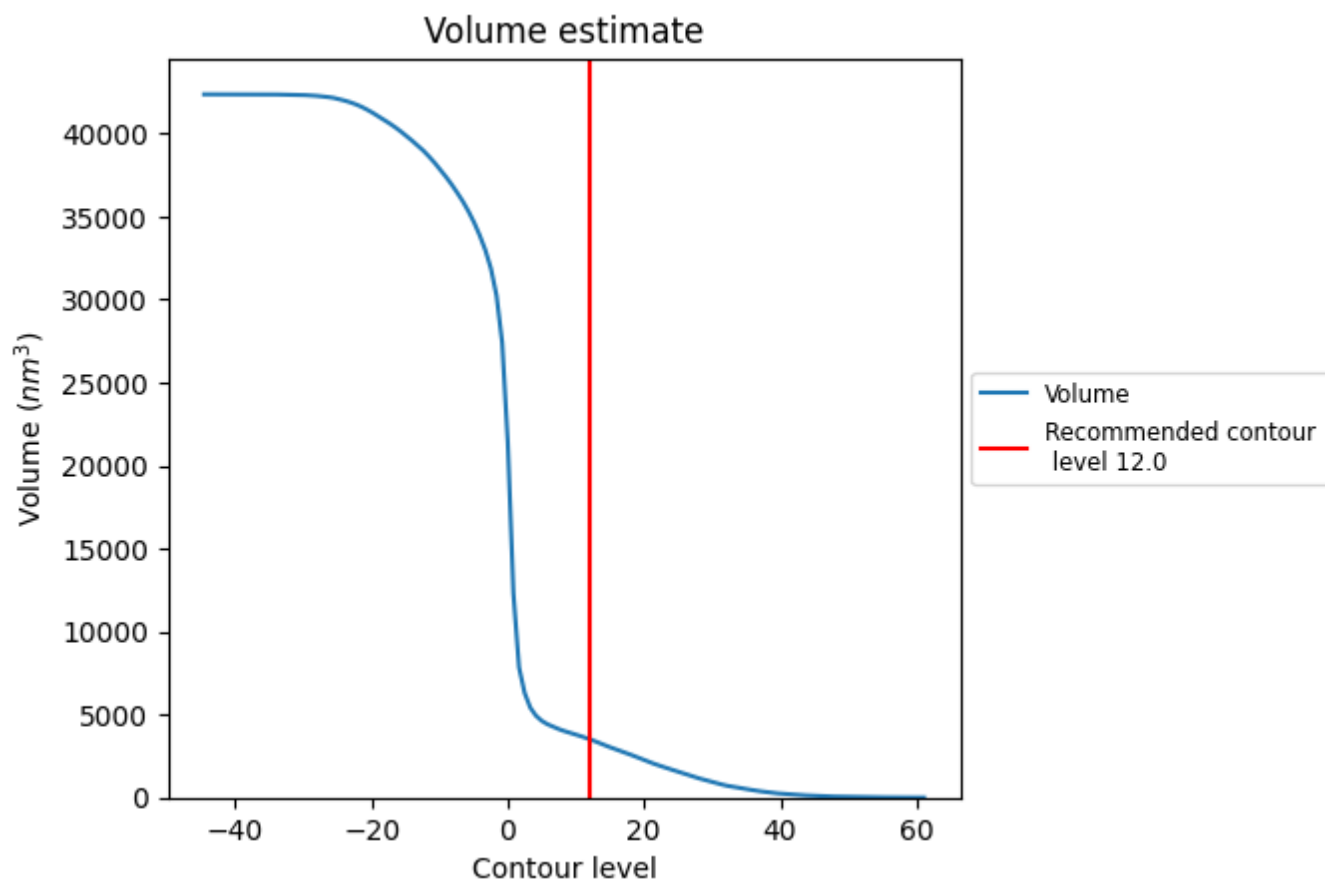
This section contains the results of statistical analysis of the map.

3.1 Map-value distribution [i](#)



The map-value distribution is plotted in 128 intervals along the x-axis. The y-axis is logarithmic. A spike in this graph at zero usually indicates that the volume has been masked.

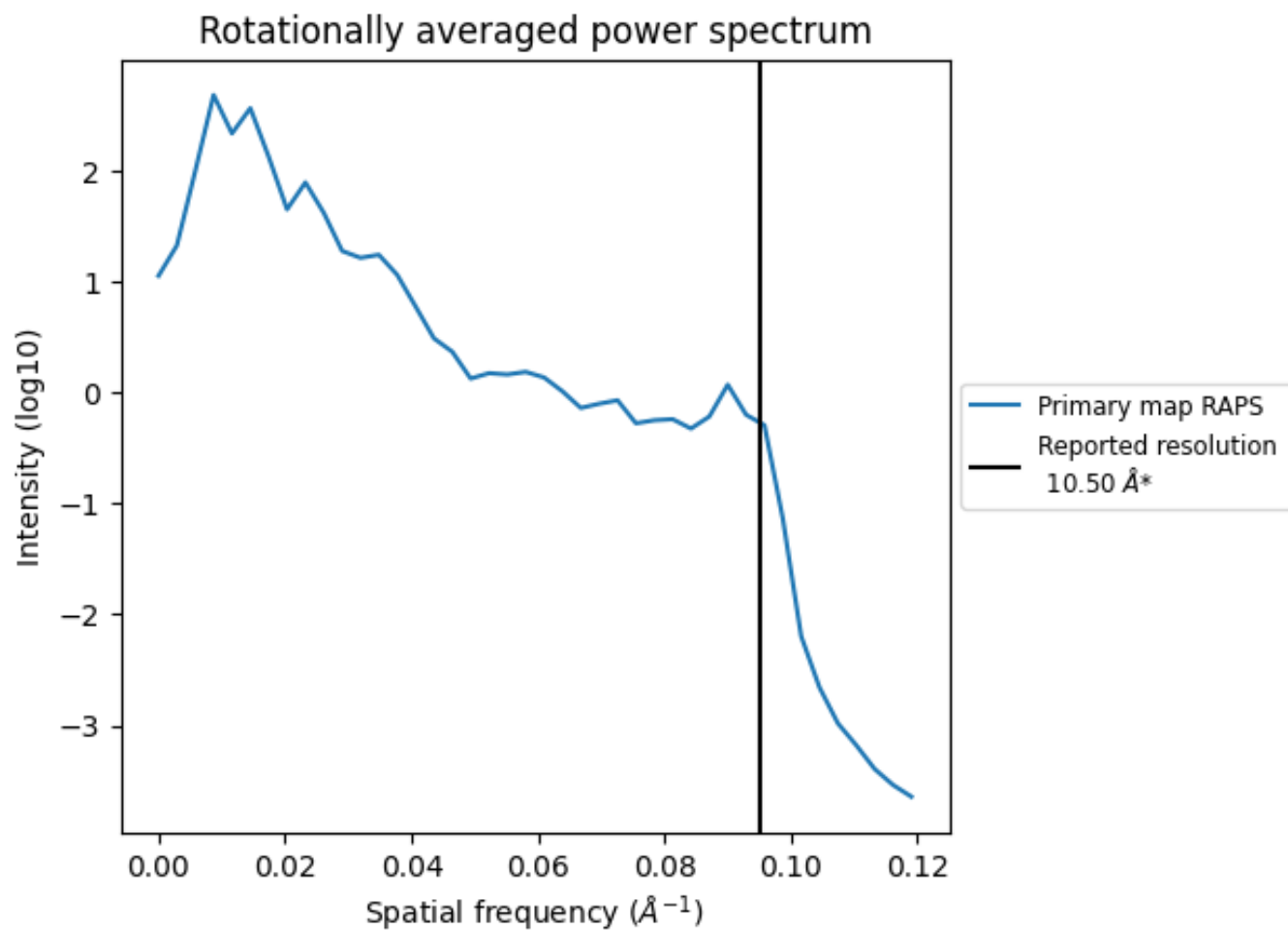
3.2 Volume estimate [\(i\)](#)



The volume at the recommended contour level is 3516 nm^3 ; this corresponds to an approximate mass of 3176 kDa.

The volume estimate graph shows how the enclosed volume varies with the contour level. The recommended contour level is shown as a vertical line and the intersection between the line and the curve gives the volume of the enclosed surface at the given level.

3.3 Rotationally averaged power spectrum [\(i\)](#)



*Reported resolution corresponds to spatial frequency of 0.095\AA^{-1}

4 Fourier-Shell correlation

This section was not generated. No FSC curve or half-maps provided.