



Full wwPDB X-ray Structure Validation Report ⓘ

Feb 11, 2024 – 01:15 AM EST

PDB ID : 366D
Title : 1.3 Å STRUCTURE DETERMINATION OF THE D(CG(5-BRU)ACG)2/6-BROMO-9-AMINO-DACA COMPLEX
Authors : Todd, A.K.; Adams, A.; Thorpe, J.H.; Denny, W.A.; Cardin, C.J.
Deposited on : 1997-12-19
Resolution : 1.30 Å(reported)

This is a Full wwPDB X-ray Structure Validation Report for a publicly released PDB entry.

We welcome your comments at validation@mail.wwpdb.org

A user guide is available at

<https://www.wwpdb.org/validation/2017/XrayValidationReportHelp>

with specific help available everywhere you see the ⓘ symbol.

The types of validation reports are described at

<http://www.wwpdb.org/validation/2017/FAQs#types>.

The following versions of software and data (see [references ⓘ](#)) were used in the production of this report:

MolProbity : 4.02b-467
Mogul : 1.8.5 (274361), CSD as541be (2020)
Xtrriage (Phenix) : 1.13
EDS : 2.36
buster-report : 1.1.7 (2018)
Percentile statistics : 20191225.v01 (using entries in the PDB archive December 25th 2019)
Refmac : 5.8.0158
CCP4 : 7.0.044 (Gargrove)
Ideal geometry (proteins) : Engh & Huber (2001)
Ideal geometry (DNA, RNA) : Parkinson et al. (1996)
Validation Pipeline (wwPDB-VP) : 2.36

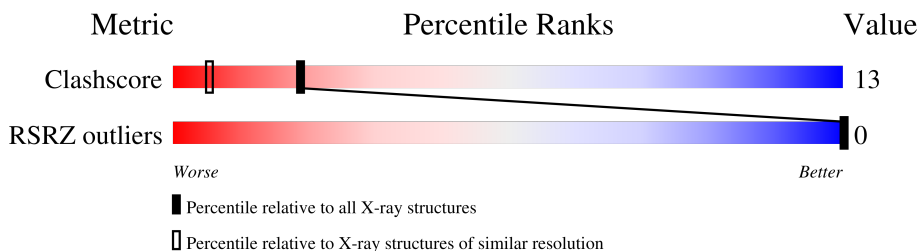
1 Overall quality at a glance

The following experimental techniques were used to determine the structure:

X-RAY DIFFRACTION

The reported resolution of this entry is 1.30 Å.

Percentile scores (ranging between 0-100) for global validation metrics of the entry are shown in the following graphic. The table shows the number of entries on which the scores are based.



Metric	Whole archive (#Entries)	Similar resolution (#Entries, resolution range(Å))
Clashscore	141614	1101 (1.30-1.30)
RSRZ outliers	127900	1029 (1.30-1.30)

The table below summarises the geometric issues observed across the polymeric chains and their fit to the electron density. The red, orange, yellow and green segments of the lower bar indicate the fraction of residues that contain outliers for ≥ 3 , 2, 1 and 0 types of geometric quality criteria respectively. A grey segment represents the fraction of residues that are not modelled. The numeric value for each fraction is indicated below the corresponding segment, with a dot representing fractions $\leq 5\%$. The upper red bar (where present) indicates the fraction of residues that have poor fit to the electron density. The numeric value is given above the bar.

Mol	Chain	Length	Quality of chain
1	A	6	

2 Entry composition [i](#)

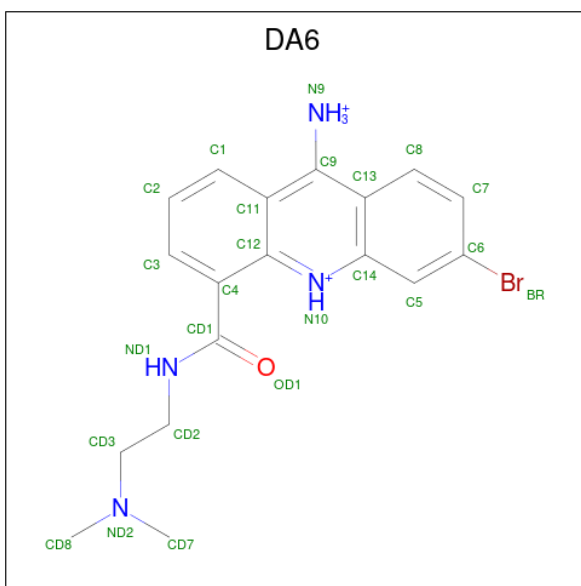
There are 3 unique types of molecules in this entry. The entry contains 336 atoms, of which 115 are hydrogens and 0 are deuteriums.

In the tables below, the ZeroOcc column contains the number of atoms modelled with zero occupancy, the AltConf column contains the number of residues with at least one atom in alternate conformation and the Trace column contains the number of residues modelled with at most 2 atoms.

- Molecule 1 is a DNA chain called DNA (5'-D(*CP*GP*(BRU)P*AP*CP*G)-3').

Mol	Chain	Residues	Atoms						ZeroOcc	AltConf	Trace	
			Total	Br	C	H	N	O				P
1	A	6	217	2	66	74	25	43	7	0	2	0

- Molecule 2 is 6-BROMO-9-AMINO-N-ETHYL(DIAMINOMETHYL)ACRIDINE-4-CARB OXAMIDE (three-letter code: DA6) (formula: C₁₈H₂₁BrN₄O).



Mol	Chain	Residues	Atoms						ZeroOcc	AltConf
			Total	Br	C	H	N	O		
2	A	1	45	1	18	21	4	1	0	0
2	A	1	44	1	18	20	4	1	0	0


- Molecule 3 is water.

Mol	Chain	Residues	Atoms		ZeroOcc	AltConf
3	A	30	Total	O	0	0
			30	30		

3 Residue-property plots

These plots are drawn for all protein, RNA, DNA and oligosaccharide chains in the entry. The first graphic for a chain summarises the proportions of the various outlier classes displayed in the second graphic. The second graphic shows the sequence view annotated by issues in geometry and electron density. Residues are color-coded according to the number of geometric quality criteria for which they contain at least one outlier: green = 0, yellow = 1, orange = 2 and red = 3 or more. A red dot above a residue indicates a poor fit to the electron density ($RSRZ > 2$). Stretches of 2 or more consecutive residues without any outlier are shown as a green connector. Residues present in the sample, but not in the model, are shown in grey.

- Molecule 1: DNA (5'-D(*CP*GP*(BRU)P*AP*CP*G)-3')

Chain A:  67% 33%

G1001
G1002
U1003
A1004
C1005
G1006

4 Data and refinement statistics

Property	Value	Source
Space group	P 64	Depositor
Cell constants a, b, c, α , β , γ	30.11Å 30.11Å 39.56Å 90.00° 90.00° 120.00°	Depositor
Resolution (Å)	8.00 – 1.30 7.96 – 1.30	Depositor EDS
% Data completeness (in resolution range)	90.2 (8.00-1.30) 94.9 (7.96-1.30)	Depositor EDS
R_{merge}	0.06	Depositor
R_{sym}	(Not available)	Depositor
$\langle I/\sigma(I) \rangle$ ¹	2.10 (at 1.30Å)	Xtrriage
Refinement program	SHELXL-96	Depositor
R, R_{free}	0.185 , (Not available) 0.196 , (Not available)	Depositor DCC
R_{free} test set	No test flags present.	wwPDB-VP
Wilson B-factor (Å ²)	15.5	Xtrriage
Anisotropy	0.428	Xtrriage
Bulk solvent k_{sol} (e/Å ³), B_{sol} (Å ²)	0.46 , 96.5	EDS
L-test for twinning ²	$\langle L \rangle = 0.49$, $\langle L^2 \rangle = 0.32$	Xtrriage
Estimated twinning fraction	0.108 for h,-h-k,-l	Xtrriage
F_o, F_c correlation	0.96	EDS
Total number of atoms	336	wwPDB-VP
Average B, all atoms (Å ²)	23.0	wwPDB-VP

Xtrriage's analysis on translational NCS is as follows: *The largest off-origin peak in the Patterson function is 15.13% of the height of the origin peak. No significant pseudotranslation is detected.*

¹Intensities estimated from amplitudes.

²Theoretical values of $\langle |L| \rangle$, $\langle L^2 \rangle$ for acentric reflections are 0.5, 0.333 respectively for untwinned datasets, and 0.375, 0.2 for perfectly twinned datasets.

5 Model quality i

5.1 Standard geometry i

Bond lengths and bond angles in the following residue types are not validated in this section: BRU, DA6

The Z score for a bond length (or angle) is the number of standard deviations the observed value is removed from the expected value. A bond length (or angle) with $|Z| > 5$ is considered an outlier worth inspection. RMSZ is the root-mean-square of all Z scores of the bond lengths (or angles).

Mol	Chain	Bond lengths		Bond angles	
		RMSZ	# Z >5	RMSZ	# Z >5
1	A	2.68	8/135 (5.9%)	3.21	27/204 (13.2%)

All (8) bond length outliers are listed below:

Mol	Chain	Res	Type	Atoms	Z	Observed(Å)	Ideal(Å)
1	A	1002	DG	O4'-C1'	7.80	1.51	1.42
1	A	1006	DG	N9-C8	6.94	1.42	1.37
1	A	1004[A]	DA	P-OP1	6.89	1.60	1.49
1	A	1004[B]	DA	P-OP1	6.89	1.60	1.49
1	A	1006	DG	P-OP1	6.65	1.60	1.49
1	A	1001	DC	C2'-C1'	-5.88	1.46	1.52
1	A	1002	DG	N9-C8	-5.71	1.33	1.37
1	A	1006	DG	P-O5'	-5.68	1.54	1.59

All (27) bond angle outliers are listed below:

Mol	Chain	Res	Type	Atoms	Z	Observed(°)	Ideal(°)
1	A	1004[A]	DA	O4'-C1'-N9	-10.64	100.55	108.00
1	A	1004[B]	DA	O4'-C1'-N9	-10.64	100.55	108.00
1	A	1005	DC	C6-N1-C2	10.37	124.45	120.30
1	A	1005	DC	C5-C6-N1	-9.60	116.20	121.00
1	A	1006	DG	O4'-C1'-N9	-9.48	101.36	108.00
1	A	1002	DG	O4'-C1'-N9	-9.34	101.47	108.00
1	A	1006	DG	C5-N7-C8	7.39	108.00	104.30
1	A	1004[A]	DA	C4-C5-C6	7.37	120.69	117.00
1	A	1004[B]	DA	C4-C5-C6	7.37	120.69	117.00
1	A	1006	DG	N7-C8-N9	-6.60	109.80	113.10
1	A	1004[A]	DA	O5'-P-OP2	6.38	118.36	110.70
1	A	1004[B]	DA	O5'-P-OP2	6.38	118.36	110.70
1	A	1001	DC	C4-C5-C6	-6.19	114.30	117.40

Continued on next page...

Continued from previous page...

Mol	Chain	Res	Type	Atoms	Z	Observed(°)	Ideal(°)
1	A	1001	DC	N3-C4-C5	5.97	124.29	121.90
1	A	1002	DG	C8-N9-C4	-5.95	104.02	106.40
1	A	1001	DC	N1-C1'-C2'	5.90	123.80	112.60
1	A	1006	DG	C5-C6-N1	5.71	114.36	111.50
1	A	1002	DG	C4-C5-C6	5.61	122.17	118.80
1	A	1005	DC	O4'-C1'-C2'	-5.54	101.47	105.90
1	A	1002	DG	N1-C6-O6	5.53	123.22	119.90
1	A	1001	DC	C5-C4-N4	-5.41	116.41	120.20
1	A	1001	DC	O4'-C4'-C3'	-5.35	102.36	104.50
1	A	1004[A]	DA	C2-N3-C4	5.24	113.22	110.60
1	A	1004[B]	DA	C2-N3-C4	5.24	113.22	110.60
1	A	1005	DC	N3-C4-C5	5.12	123.95	121.90
1	A	1001	DC	C2-N3-C4	5.06	122.43	119.90
1	A	1001	DC	N1-C2-N3	-5.04	115.67	119.20

There are no chirality outliers.

There are no planarity outliers.

5.2 Too-close contacts [i](#)

In the following table, the Non-H and H(model) columns list the number of non-hydrogen atoms and hydrogen atoms in the chain respectively. The H(added) column lists the number of hydrogen atoms added and optimized by MolProbity. The Clashes column lists the number of clashes within the asymmetric unit, whereas Symm-Clashes lists symmetry-related clashes.

Mol	Chain	Non-H	H(model)	H(added)	Clashes	Symm-Clashes
1	A	143	74	64	4	0
2	A	48	41	42	3	0
3	A	30	0	0	1	0
All	All	221	115	106	4	0

The all-atom clashscore is defined as the number of clashes found per 1000 atoms (including hydrogen atoms). The all-atom clashscore for this structure is 13.

All (4) close contacts within the same asymmetric unit are listed below, sorted by their clash magnitude.

Atom-1	Atom-2	Interatomic distance (Å)	Clash overlap (Å)
1:A:1003[B]:BRU:H4'	3:A:4030:HOH:O	1.94	0.66
1:A:1006:DG:N7	2:A:3015:DA6:HD21	2.12	0.65
1:A:1006:DG:C5	2:A:3015:DA6:HD21	2.39	0.57

Continued on next page...

Continued from previous page...

Atom-1	Atom-2	Interatomic distance (Å)	Clash overlap (Å)
1:A:1006:DG:C6	2:A:3015:DA6:HD21	2.55	0.42

There are no symmetry-related clashes.

5.3 Torsion angles [i](#)

5.3.1 Protein backbone [i](#)

There are no protein molecules in this entry.

5.3.2 Protein sidechains [i](#)

There are no protein molecules in this entry.

5.3.3 RNA [i](#)

There are no RNA molecules in this entry.

5.4 Non-standard residues in protein, DNA, RNA chains [i](#)

2 non-standard protein/DNA/RNA residues are modelled in this entry.

In the following table, the Counts columns list the number of bonds (or angles) for which Mogul statistics could be retrieved, the number of bonds (or angles) that are observed in the model and the number of bonds (or angles) that are defined in the Chemical Component Dictionary. The Link column lists molecule types, if any, to which the group is linked. The Z score for a bond length (or angle) is the number of standard deviations the observed value is removed from the expected value. A bond length (or angle) with $|Z| > 2$ is considered an outlier worth inspection. RMSZ is the root-mean-square of all Z scores of the bond lengths (or angles).

Mol	Type	Chain	Res	Link	Bond lengths			Bond angles		
					Counts	RMSZ	# Z > 2	Counts	RMSZ	# Z > 2
1	BRU	A	1003[B]	1	18,21,22	1.84	5 (27%)	26,30,33	2.99	12 (46%)
1	BRU	A	1003[A]	1	18,21,22	2.00	5 (27%)	26,30,33	3.64	13 (50%)

In the following table, the Chirals column lists the number of chiral outliers, the number of chiral centers analysed, the number of these observed in the model and the number defined in the Chemical Component Dictionary. Similar counts are reported in the Torsion and Rings columns. '·' means no outliers of that kind were identified.

Mol	Type	Chain	Res	Link	Chirals	Torsions	Rings
1	BRU	A	1003[B]	1	-	0/7/21/22	0/2/2/2
1	BRU	A	1003[A]	1	-	4/7/21/22	0/2/2/2

All (10) bond length outliers are listed below:

Mol	Chain	Res	Type	Atoms	Z	Observed(Å)	Ideal(Å)
1	A	1003[A]	BRU	C1'-N1	-4.96	1.35	1.48
1	A	1003[B]	BRU	C1'-N1	-4.92	1.35	1.48
1	A	1003[A]	BRU	O4'-C1'	3.49	1.50	1.42
1	A	1003[B]	BRU	O4'-C1'	2.96	1.48	1.42
1	A	1003[B]	BRU	O5'-C5'	-2.66	1.38	1.44
1	A	1003[A]	BRU	C2-N3	-2.64	1.33	1.38
1	A	1003[A]	BRU	C4-C5	-2.58	1.39	1.45
1	A	1003[A]	BRU	O5'-C5'	-2.36	1.39	1.44
1	A	1003[B]	BRU	C4-C5	-2.30	1.40	1.45
1	A	1003[B]	BRU	C6-C5	-2.12	1.30	1.34

All (25) bond angle outliers are listed below:

Mol	Chain	Res	Type	Atoms	Z	Observed(°)	Ideal(°)
1	A	1003[A]	BRU	C6-C5-C4	8.25	129.06	120.67
1	A	1003[A]	BRU	O4'-C1'-N1	-7.62	94.24	107.86
1	A	1003[A]	BRU	O4-C4-C5	7.17	134.84	125.84
1	A	1003[B]	BRU	O4'-C1'-N1	-6.82	95.66	107.86
1	A	1003[A]	BRU	C2'-C1'-N1	6.02	127.63	113.77
1	A	1003[B]	BRU	C6-C5-C4	5.83	126.59	120.67
1	A	1003[A]	BRU	C5-C4-N3	-5.62	106.88	113.34
1	A	1003[B]	BRU	C6-N1-C2	-5.37	115.86	121.30
1	A	1003[A]	BRU	C6-N1-C2	-5.29	115.94	121.30
1	A	1003[B]	BRU	C1'-N1-C2	4.96	127.41	117.64
1	A	1003[B]	BRU	C2'-C1'-N1	4.83	124.90	113.77
1	A	1003[A]	BRU	C1'-N1-C2	4.13	125.78	117.64
1	A	1003[B]	BRU	C5-C4-N3	-3.63	109.17	113.34
1	A	1003[B]	BRU	O2-C2-N1	3.52	127.47	122.79
1	A	1003[A]	BRU	O4'-C1'-C2'	-3.49	99.65	106.25
1	A	1003[A]	BRU	BR-C5-C4	-3.48	114.00	118.03
1	A	1003[B]	BRU	BR-C5-C4	-3.11	114.43	118.03
1	A	1003[B]	BRU	O2-C2-N3	-2.86	116.17	121.50
1	A	1003[B]	BRU	O4'-C1'-C2'	-2.81	100.93	106.25
1	A	1003[A]	BRU	BR-C5-C6	-2.66	116.92	120.64
1	A	1003[B]	BRU	C1'-N1-C6	-2.34	116.73	120.77
1	A	1003[A]	BRU	O3'-C3'-C4'	-2.34	101.14	110.10
1	A	1003[A]	BRU	N3-C2-N1	2.19	117.80	114.89

Continued on next page...

Continued from previous page...

Mol	Chain	Res	Type	Atoms	Z	Observed(°)	Ideal(°)
1	A	1003[A]	BRU	C4-N3-C2	2.18	130.18	127.35
1	A	1003[B]	BRU	O4-C4-C5	2.17	128.56	125.84

There are no chirality outliers.

All (4) torsion outliers are listed below:

Mol	Chain	Res	Type	Atoms
1	A	1003[A]	BRU	C2'-C1'-N1-C6
1	A	1003[A]	BRU	C2'-C1'-N1-C2
1	A	1003[A]	BRU	O4'-C1'-N1-C6
1	A	1003[A]	BRU	O4'-C1'-N1-C2

There are no ring outliers.

1 monomer is involved in 1 short contact:

Mol	Chain	Res	Type	Clashes	Symm-Clashes
1	A	1003[B]	BRU	1	0

5.5 Carbohydrates [i](#)

There are no monosaccharides in this entry.

5.6 Ligand geometry [i](#)

2 ligands are modelled in this entry.

In the following table, the Counts columns list the number of bonds (or angles) for which Mogul statistics could be retrieved, the number of bonds (or angles) that are observed in the model and the number of bonds (or angles) that are defined in the Chemical Component Dictionary. The Link column lists molecule types, if any, to which the group is linked. The Z score for a bond length (or angle) is the number of standard deviations the observed value is removed from the expected value. A bond length (or angle) with $|Z| > 2$ is considered an outlier worth inspection. RMSZ is the root-mean-square of all Z scores of the bond lengths (or angles).

Mol	Type	Chain	Res	Link	Bond lengths			Bond angles		
					Counts	RMSZ	# Z > 2	Counts	RMSZ	# Z > 2
2	DA6	A	3015	-	26,26,26	3.32	13 (50%)	36,37,37	4.07	13 (36%)
2	DA6	A	3013	-	26,26,26	3.18	12 (46%)	36,37,37	2.68	12 (33%)

In the following table, the Chirals column lists the number of chiral outliers, the number of chiral

centers analysed, the number of these observed in the model and the number defined in the Chemical Component Dictionary. Similar counts are reported in the Torsion and Rings columns. '2' means no outliers of that kind were identified.

Mol	Type	Chain	Res	Link	Chirals	Torsions	Rings
2	DA6	A	3015	-	-	4/10/10/10	0/3/3/3
2	DA6	A	3013	-	-	4/10/10/10	0/3/3/3

All (25) bond length outliers are listed below:

Mol	Chain	Res	Type	Atoms	Z	Observed(Å)	Ideal(Å)
2	A	3015	DA6	OD1-CD1	9.31	1.42	1.23
2	A	3013	DA6	CD1-ND1	7.36	1.49	1.33
2	A	3013	DA6	C2-C3	-6.78	1.24	1.38
2	A	3015	DA6	CD8-ND2	-6.75	1.25	1.46
2	A	3013	DA6	BR-C6	-6.71	1.76	1.90
2	A	3015	DA6	C13-C14	-5.69	1.33	1.42
2	A	3013	DA6	C4-CD1	-4.90	1.42	1.50
2	A	3015	DA6	BR-C6	-4.90	1.80	1.90
2	A	3015	DA6	C12-N10	4.56	1.44	1.35
2	A	3015	DA6	CD7-ND2	4.56	1.60	1.46
2	A	3013	DA6	C3-C4	3.85	1.45	1.38
2	A	3013	DA6	CD3-CD2	3.50	1.62	1.51
2	A	3013	DA6	C4-C12	-3.48	1.38	1.43
2	A	3013	DA6	CD2-ND1	3.35	1.53	1.46
2	A	3013	DA6	C13-C14	2.92	1.47	1.42
2	A	3013	DA6	C5-C14	-2.81	1.37	1.41
2	A	3015	DA6	CD2-ND1	-2.67	1.40	1.46
2	A	3015	DA6	CD3-CD2	-2.62	1.44	1.51
2	A	3015	DA6	C9-C13	-2.59	1.38	1.43
2	A	3015	DA6	C2-C1	2.36	1.42	1.36
2	A	3015	DA6	C8-C7	2.31	1.41	1.36
2	A	3013	DA6	C1-C11	-2.28	1.37	1.42
2	A	3013	DA6	C9-C13	-2.28	1.39	1.43
2	A	3015	DA6	C5-C14	2.25	1.45	1.41
2	A	3015	DA6	CD3-ND2	2.18	1.54	1.46

All (25) bond angle outliers are listed below:

Mol	Chain	Res	Type	Atoms	Z	Observed(°)	Ideal(°)
2	A	3015	DA6	C4-CD1-ND1	14.06	135.29	116.30
2	A	3015	DA6	CD3-CD2-ND1	10.25	131.22	111.60
2	A	3013	DA6	OD1-CD1-ND1	-7.27	108.12	122.61
2	A	3015	DA6	OD1-CD1-ND1	-7.17	108.31	122.61

Continued on next page...

Continued from previous page...

Mol	Chain	Res	Type	Atoms	Z	Observed(°)	Ideal(°)
2	A	3015	DA6	C8-C13-C9	-6.89	113.47	122.83
2	A	3013	DA6	C12-N10-C14	6.85	124.82	117.02
2	A	3015	DA6	CD8-ND2-CD7	6.61	126.83	109.73
2	A	3013	DA6	CD3-CD2-ND1	-6.44	99.27	111.60
2	A	3015	DA6	C9-C13-C14	6.05	121.83	118.29
2	A	3015	DA6	C8-C13-C14	5.69	124.70	118.33
2	A	3015	DA6	C7-C8-C13	-4.18	115.32	121.13
2	A	3013	DA6	C13-C14-N10	-4.16	119.46	123.35
2	A	3013	DA6	C11-C12-N10	-4.09	117.67	123.31
2	A	3015	DA6	OD1-CD1-C4	-3.86	116.39	121.72
2	A	3013	DA6	OD1-CD1-C4	-3.58	116.77	121.72
2	A	3013	DA6	C8-C13-C9	3.56	127.67	122.83
2	A	3013	DA6	C8-C13-C14	-3.01	114.96	118.33
2	A	3015	DA6	C5-C14-N10	-2.93	115.82	119.05
2	A	3015	DA6	C6-C5-C14	-2.91	115.48	118.55
2	A	3013	DA6	C13-C9-C11	2.63	121.65	118.73
2	A	3015	DA6	BR-C6-C7	-2.30	115.95	119.30
2	A	3015	DA6	C4-C12-N10	-2.19	117.59	120.30
2	A	3013	DA6	C1-C11-C9	2.19	125.81	122.83
2	A	3013	DA6	CD2-CD3-ND2	2.10	120.40	113.08
2	A	3013	DA6	C13-C9-N9	-2.09	118.38	120.59

There are no chirality outliers.

All (8) torsion outliers are listed below:

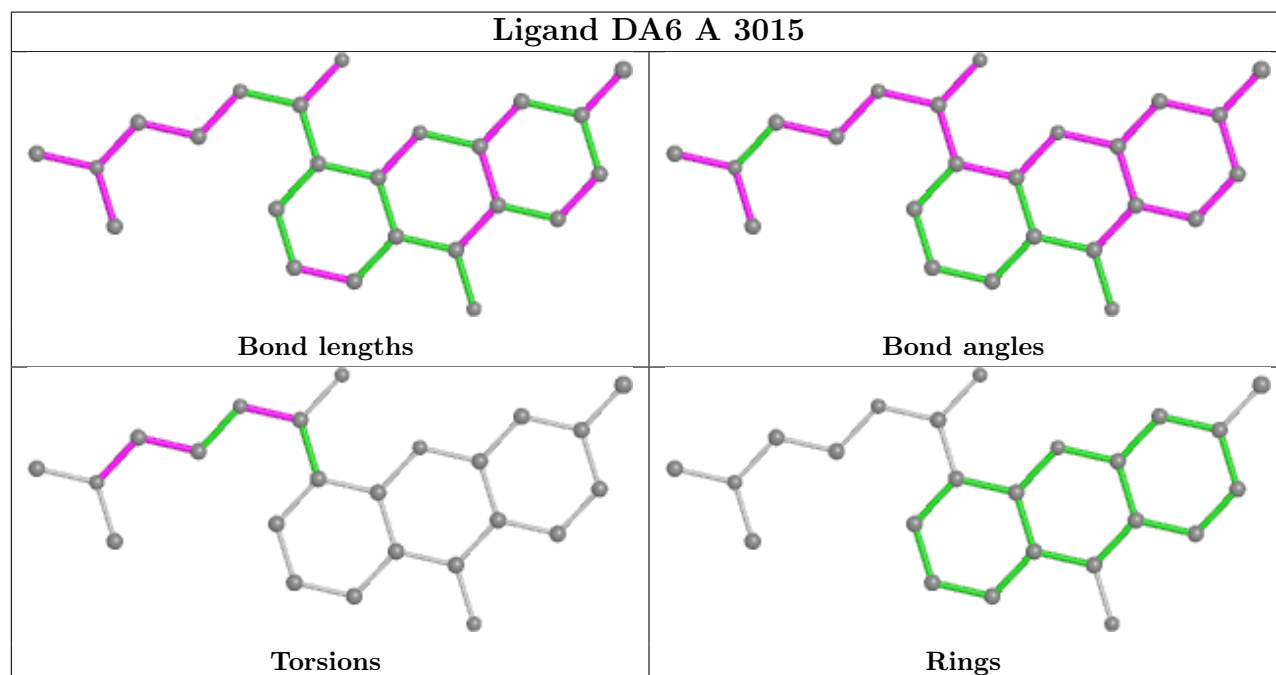
Mol	Chain	Res	Type	Atoms
2	A	3015	DA6	OD1-CD1-ND1-CD2
2	A	3015	DA6	C4-CD1-ND1-CD2
2	A	3015	DA6	ND1-CD2-CD3-ND2
2	A	3013	DA6	C3-C4-CD1-OD1
2	A	3013	DA6	C12-C4-CD1-OD1
2	A	3015	DA6	CD2-CD3-ND2-CD8
2	A	3013	DA6	OD1-CD1-ND1-CD2
2	A	3013	DA6	C4-CD1-ND1-CD2

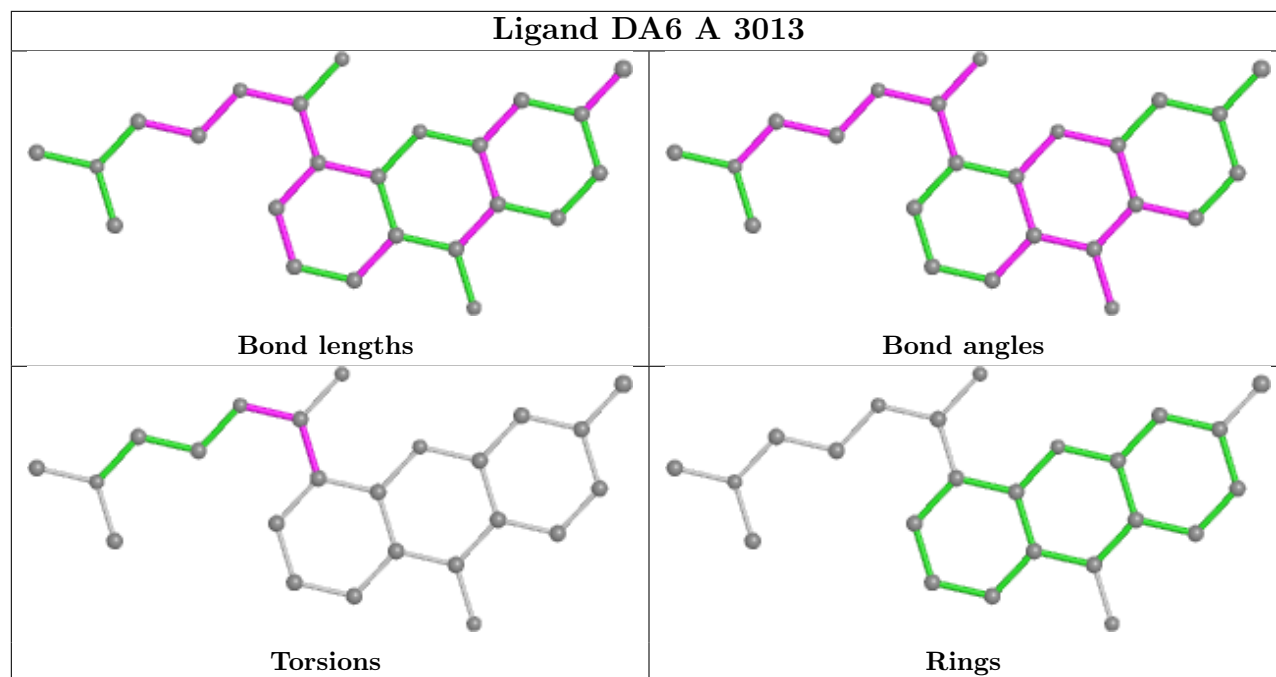
There are no ring outliers.

1 monomer is involved in 3 short contacts:

Mol	Chain	Res	Type	Clashes	Symm-Clashes
2	A	3015	DA6	3	0

The following is a two-dimensional graphical depiction of Mogul quality analysis of bond lengths, bond angles, torsion angles, and ring geometry for all instances of the Ligand of Interest. In addition, ligands with molecular weight > 250 and outliers as shown on the validation Tables will also be included. For torsion angles, if less than 5% of the Mogul distribution of torsion angles is within 10 degrees of the torsion angle in question, then that torsion angle is considered an outlier. Any bond that is central to one or more torsion angles identified as an outlier by Mogul will be highlighted in the graph. For rings, the root-mean-square deviation (RMSD) between the ring in question and similar rings identified by Mogul is calculated over all ring torsion angles. If the average RMSD is greater than 60 degrees and the minimal RMSD between the ring in question and any Mogul-identified rings is also greater than 60 degrees, then that ring is considered an outlier. The outliers are highlighted in purple. The color gray indicates Mogul did not find sufficient equivalents in the CSD to analyse the geometry.





5.7 Other polymers [i](#)

There are no such residues in this entry.

5.8 Polymer linkage issues [i](#)

There are no chain breaks in this entry.

6 Fit of model and data [i](#)

6.1 Protein, DNA and RNA chains [i](#)

In the following table, the column labelled ‘#RSRZ> 2’ contains the number (and percentage) of RSRZ outliers, followed by percent RSRZ outliers for the chain as percentile scores relative to all X-ray entries and entries of similar resolution. The OWAB column contains the minimum, median, 95th percentile and maximum values of the occupancy-weighted average B-factor per residue. The column labelled ‘Q< 0.9’ lists the number of (and percentage) of residues with an average occupancy less than 0.9.

Mol	Chain	Analysed	<RSRZ>	#RSRZ>2	OWAB(Å ²)	Q<0.9
1	A	5/6 (83%)	-0.02	0 100 100	16, 16, 19, 20	0

There are no RSRZ outliers to report.

6.2 Non-standard residues in protein, DNA, RNA chains [i](#)

In the following table, the Atoms column lists the number of modelled atoms in the group and the number defined in the chemical component dictionary. The B-factors column lists the minimum, median, 95th percentile and maximum values of B factors of atoms in the group. The column labelled ‘Q< 0.9’ lists the number of atoms with occupancy less than 0.9.

Mol	Type	Chain	Res	Atoms	RSCC	RSR	B-factors(Å ²)	Q<0.9
1	BRU	A	1003[A]	20/21	0.93	0.13	14,22,30,34	29
1	BRU	A	1003[B]	20/21	0.93	0.13	14,21,27,31	29

6.3 Carbohydrates [i](#)

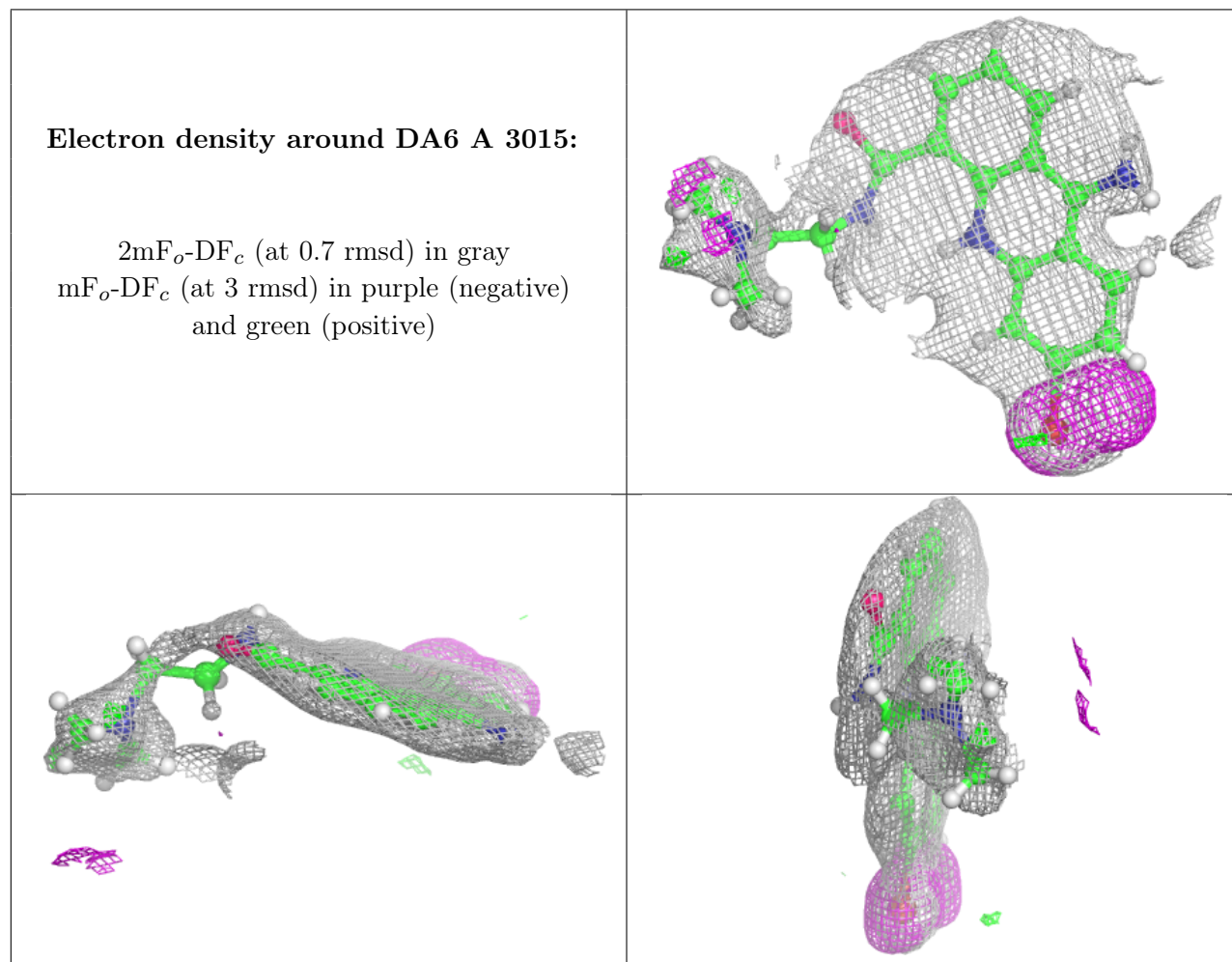
There are no monosaccharides in this entry.

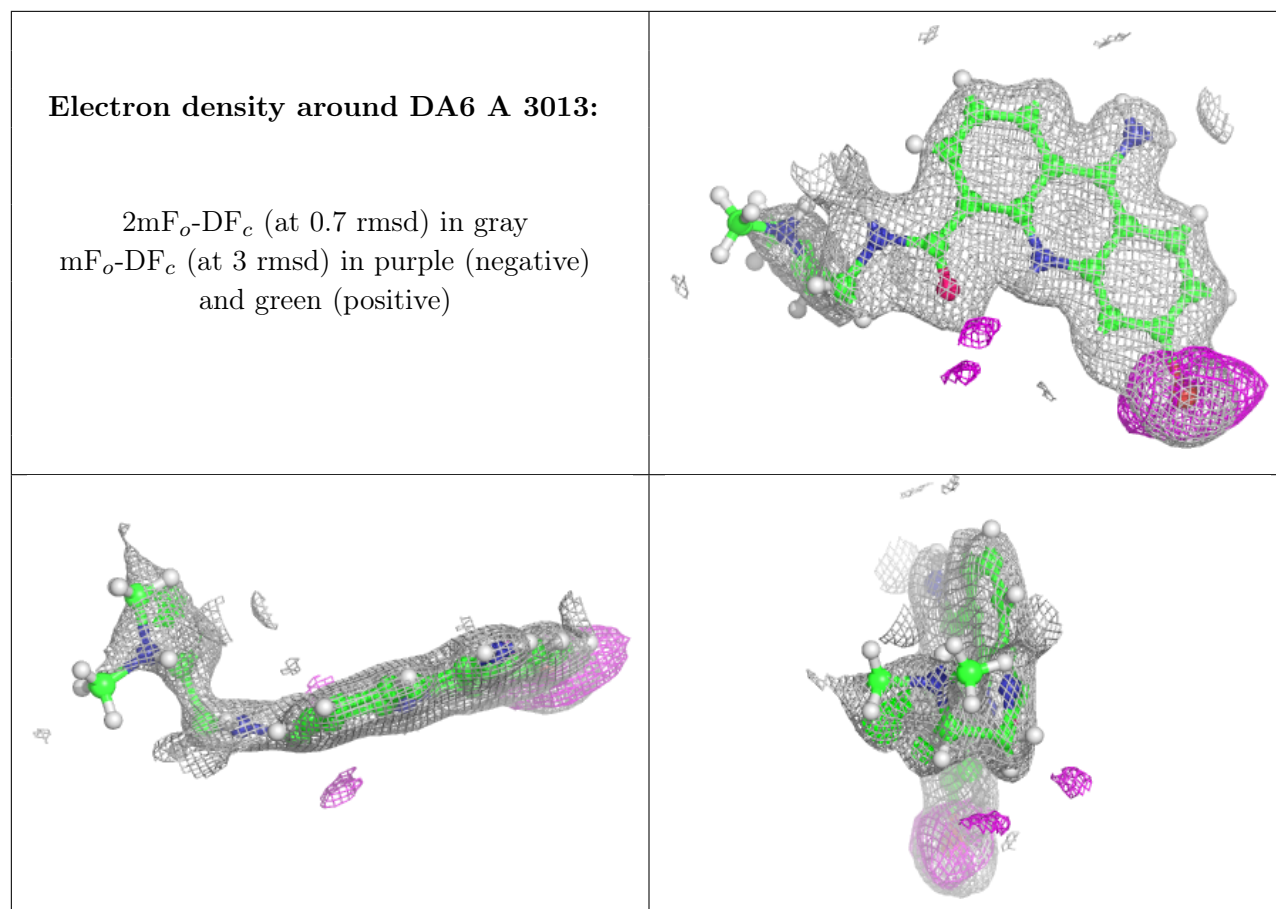
6.4 Ligands [i](#)

In the following table, the Atoms column lists the number of modelled atoms in the group and the number defined in the chemical component dictionary. The B-factors column lists the minimum, median, 95th percentile and maximum values of B factors of atoms in the group. The column labelled ‘Q< 0.9’ lists the number of atoms with occupancy less than 0.9.

Mol	Type	Chain	Res	Atoms	RSCC	RSR	B-factors(Å ²)	Q<0.9
2	DA6	A	3015	24/24	0.76	0.19	1,21,43,45	44
2	DA6	A	3013	24/24	0.92	0.13	17,25,44,53	20

The following is a graphical depiction of the model fit to experimental electron density of all instances of the Ligand of Interest. In addition, ligands with molecular weight > 250 and outliers as shown on the geometry validation Tables will also be included. Each fit is shown from different orientation to approximate a three-dimensional view.





6.5 Other polymers [i](#)

There are no such residues in this entry.