



# Full wwPDB X-ray Structure Validation Report ⓘ

Jun 11, 2024 – 06:34 PM EDT

PDB ID : 182D  
Title : DNA-NOGALAMYCIN INTERACTIONS: THE CRYSTAL STRUCTURE OF D(TGATCA) COMPLEXED WITH NOGALAMYCIN  
Authors : Smith, C.K.; Davies, G.J.; Dodson, E.J.; Moore, M.H.  
Deposited on : 1994-07-28  
Resolution : 1.80 Å(reported)

This is a Full wwPDB X-ray Structure Validation Report for a publicly released PDB entry.

We welcome your comments at [validation@mail.wwpdb.org](mailto:validation@mail.wwpdb.org)

A user guide is available at

<https://www.wwpdb.org/validation/2017/XrayValidationReportHelp>

with specific help available everywhere you see the ⓘ symbol.

The types of validation reports are described at

<http://www.wwpdb.org/validation/2017/FAQs#types>.

---

The following versions of software and data (see [references ⓘ](#)) were used in the production of this report:

MolProbity : 4.02b-467  
Mogul : 2022.3.0, CSD as543be (2022)  
Xtrriage (Phenix) : 1.20.1  
EDS : 2.36.2  
buster-report : 1.1.7 (2018)  
Percentile statistics : 20191225.v01 (using entries in the PDB archive December 25th 2019)  
Refmac : 5.8.0158  
CCP4 : 7.0.044 (Gargrove)  
Ideal geometry (proteins) : Engh & Huber (2001)  
Ideal geometry (DNA, RNA) : Parkinson et al. (1996)  
Validation Pipeline (wwPDB-VP) : 2.36.2



## 2 Entry composition [i](#)

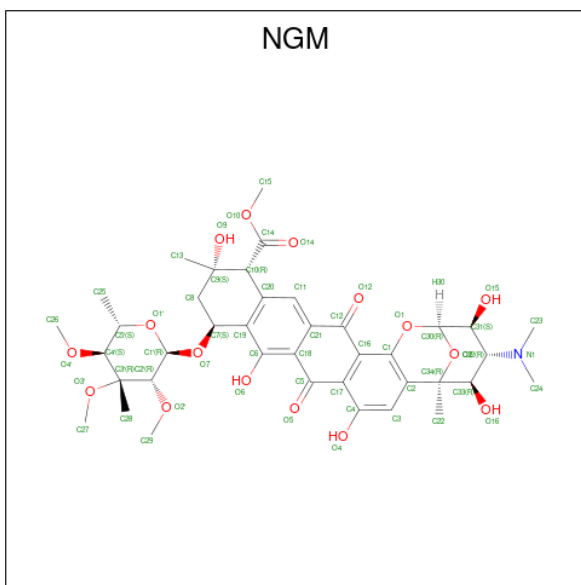
There are 3 unique types of molecules in this entry. The entry contains 465 atoms, of which 0 are hydrogens and 0 are deuteriums.

In the tables below, the ZeroOcc column contains the number of atoms modelled with zero occupancy, the AltConf column contains the number of residues with at least one atom in alternate conformation and the Trace column contains the number of residues modelled with at most 2 atoms.

- Molecule 1 is a DNA chain called DNA (5'-D(\*TP\*GP\*AP\*TP\*CP\*A)-3').

Mol	Chain	Residues	Atoms					ZeroOcc	AltConf	Trace
			Total	C	N	O	P			
1	A	6	Total 119	C 59	N 22	O 33	P 5	0	0	0
1	B	6	Total 119	C 59	N 22	O 33	P 5	0	0	0

- Molecule 2 is NOGALAMYCIN (three-letter code: NGM) (formula: C<sub>39</sub>H<sub>49</sub>NO<sub>16</sub>).



Mol	Chain	Residues	Atoms				ZeroOcc	AltConf
			Total	C	N	O		
2	A	1	Total 56	C 39	N 1	O 16	0	0
2	B	1	Total 56	C 39	N 1	O 16	0	0

- Molecule 3 is water.

<b>Mol</b>	<b>Chain</b>	<b>Residues</b>	<b>Atoms</b>		<b>ZeroOcc</b>	<b>AltConf</b>
3	A	56	Total 56	O 56	0	0
3	B	59	Total 59	O 59	0	0

### 3 Residue-property plots


These plots are drawn for all protein, RNA, DNA and oligosaccharide chains in the entry. The first graphic for a chain summarises the proportions of the various outlier classes displayed in the second graphic. The second graphic shows the sequence view annotated by issues in geometry and electron density. Residues are color-coded according to the number of geometric quality criteria for which they contain at least one outlier: green = 0, yellow = 1, orange = 2 and red = 3 or more. A red dot above a residue indicates a poor fit to the electron density ( $RSRZ > 2$ ). Stretches of 2 or more consecutive residues without any outlier are shown as a green connector. Residues present in the sample, but not in the model, are shown in grey.

- Molecule 1: DNA (5'-D(\*TP\*GP\*AP\*TP\*CP\*A)-3')

Chain A:  100%

T1	G2	A3	T4	C5	A6
----	----	----	----	----	----

- Molecule 1: DNA (5'-D(\*TP\*GP\*AP\*TP\*CP\*A)-3')

Chain B:  50% 50%

T7	C8	A9	T10	C11	A12
----	----	----	-----	-----	-----

## 4 Data and refinement statistics

Property	Value	Source
Space group	P 41 21 2	Depositor
Cell constants a, b, c, $\alpha$ , $\beta$ , $\gamma$	37.20Å 37.20Å 70.10Å 90.00° 90.00° 90.00°	Depositor
Resolution (Å)	10.00 – 1.80 10.95 – 1.81	Depositor EDS
% Data completeness (in resolution range)	81.0 (10.00-1.80) 97.9 (10.95-1.81)	Depositor EDS
$R_{merge}$	(Not available)	Depositor
$R_{sym}$	(Not available)	Depositor
$\langle I/\sigma(I) \rangle$ <sup>1</sup>	4.70 (at 1.81Å)	Xtrriage
Refinement program	PROLSQ	Depositor
R, $R_{free}$	0.195 , 0.300 0.204 , (Not available)	Depositor DCC
$R_{free}$ test set	No test flags present.	wwPDB-VP
Wilson B-factor (Å <sup>2</sup> )	26.3	Xtrriage
Anisotropy	0.097	Xtrriage
Bulk solvent $k_{sol}$ (e/Å <sup>3</sup> ), $B_{sol}$ (Å <sup>2</sup> )	0.23 , 100.1	EDS
L-test for twinning <sup>2</sup>	$\langle  L  \rangle = 0.52$ , $\langle L^2 \rangle = 0.36$	Xtrriage
Estimated twinning fraction	No twinning to report.	Xtrriage
$F_o, F_c$ correlation	0.97	EDS
Total number of atoms	465	wwPDB-VP
Average B, all atoms (Å <sup>2</sup> )	33.0	wwPDB-VP

Xtrriage's analysis on translational NCS is as follows: *The largest off-origin peak in the Patterson function is 10.75% of the height of the origin peak. No significant pseudotranslation is detected.*

<sup>1</sup>Intensities estimated from amplitudes.

<sup>2</sup>Theoretical values of  $\langle |L| \rangle$ ,  $\langle L^2 \rangle$  for acentric reflections are 0.5, 0.333 respectively for untwinned datasets, and 0.375, 0.2 for perfectly twinned datasets.

## 5 Model quality [i](#)

### 5.1 Standard geometry [i](#)

Bond lengths and bond angles in the following residue types are not validated in this section: NGM

The Z score for a bond length (or angle) is the number of standard deviations the observed value is removed from the expected value. A bond length (or angle) with  $|Z| > 5$  is considered an outlier worth inspection. RMSZ is the root-mean-square of all Z scores of the bond lengths (or angles).

Mol	Chain	Bond lengths		Bond angles	
		RMSZ	# Z  >5	RMSZ	# Z  >5
1	A	4.36	19/133 (14.3%)	5.50	42/203 (20.7%)
1	B	3.75	14/132 (10.6%)	5.30	52/200 (26.0%)
All	All	4.07	33/265 (12.5%)	5.40	94/403 (23.3%)

All (33) bond length outliers are listed below:

Mol	Chain	Res	Type	Atoms	Z	Observed(Å)	Ideal(Å)
1	A	1	DT	C5-C7	-31.52	1.31	1.50
1	B	7	DT	C5-C7	19.18	1.61	1.50
1	B	10	DT	C5-C7	18.20	1.60	1.50
1	A	4	DT	C5-C7	-16.72	1.40	1.50
1	B	11	DC	O3'-P	9.80	1.73	1.61
1	B	9	DA	O3'-P	9.68	1.72	1.61
1	B	10	DT	O3'-P	9.62	1.72	1.61
1	B	7	DT	O3'-P	8.51	1.71	1.61
1	A	5	DC	O3'-P	8.46	1.71	1.61
1	A	2	DG	C2'-C1'	7.62	1.59	1.52
1	A	1	DT	O3'-P	7.59	1.70	1.61
1	A	5	DC	C4'-O4'	-7.38	1.37	1.45
1	A	4	DT	O3'-P	6.97	1.69	1.61
1	B	10	DT	C4'-O4'	-6.79	1.38	1.45
1	A	3	DA	N7-C5	6.50	1.43	1.39
1	B	12	DA	N7-C5	6.31	1.43	1.39
1	B	8	DG	C2'-C1'	6.30	1.58	1.52
1	A	3	DA	O3'-P	6.24	1.68	1.61
1	A	6	DA	C4'-O4'	-6.19	1.38	1.45
1	A	2	DG	N3-C4	6.10	1.39	1.35
1	A	1	DT	C4'-O4'	-5.93	1.39	1.45
1	A	2	DG	P-O5'	5.89	1.65	1.59
1	B	12	DA	P-OP1	5.85	1.58	1.49
1	B	9	DA	P-OP1	5.79	1.58	1.49

*Continued on next page...*

*Continued from previous page...*

Mol	Chain	Res	Type	Atoms	Z	Observed(Å)	Ideal(Å)
1	A	2	DG	P-OP1	5.74	1.58	1.49
1	B	10	DT	N3-C4	-5.70	1.34	1.38
1	A	3	DA	C4'-O4'	-5.69	1.39	1.45
1	B	11	DC	P-OP1	5.68	1.58	1.49
1	A	6	DA	C6-N1	-5.52	1.31	1.35
1	A	4	DT	O4'-C1'	5.44	1.48	1.42
1	B	10	DT	C2-O2	5.42	1.26	1.22
1	A	4	DT	C4'-O4'	-5.35	1.39	1.45
1	A	5	DC	P-OP1	5.12	1.57	1.49

All (94) bond angle outliers are listed below:

Mol	Chain	Res	Type	Atoms	Z	Observed(°)	Ideal(°)
1	A	4	DT	C4-C5-C7	21.73	132.04	119.00
1	A	4	DT	C6-C5-C7	-19.54	111.18	122.90
1	A	3	DA	C5-C6-N1	-19.43	107.98	117.70
1	B	10	DT	C6-C5-C7	-19.05	111.47	122.90
1	A	3	DA	C6-N1-C2	18.96	129.98	118.60
1	B	10	DT	C4-C5-C7	18.13	129.88	119.00
1	A	4	DT	N3-C4-C5	15.97	124.78	115.20
1	A	3	DA	C2-N3-C4	-14.41	103.39	110.60
1	A	2	DG	O4'-C1'-N9	14.40	118.08	108.00
1	B	8	DG	N7-C8-N9	-13.94	106.13	113.10
1	B	12	DA	N1-C2-N3	-13.87	122.37	129.30
1	B	11	DC	N3-C2-O2	13.74	131.52	121.90
1	A	1	DT	N3-C4-C5	13.71	123.43	115.20
1	B	11	DC	O4'-C1'-N1	13.63	117.54	108.00
1	A	5	DC	O4'-C1'-N1	13.13	117.19	108.00
1	B	12	DA	N1-C6-N6	13.06	126.44	118.60
1	B	11	DC	C5-C6-N1	13.01	127.51	121.00
1	B	12	DA	C6-N1-C2	12.89	126.34	118.60
1	A	4	DT	C2-N3-C4	-12.87	119.48	127.20
1	A	3	DA	N1-C6-N6	12.77	126.26	118.60
1	A	3	DA	N3-C4-C5	12.64	135.65	126.80
1	B	7	DT	C6-C5-C7	-12.58	115.35	122.90
1	B	8	DG	C8-N9-C4	12.50	111.40	106.40
1	A	1	DT	C2-N3-C4	-12.27	119.84	127.20
1	B	11	DC	C2-N3-C4	11.92	125.86	119.90
1	A	2	DG	C2-N3-C4	-11.89	105.95	111.90
1	A	4	DT	C6-N1-C2	11.68	127.14	121.30
1	A	6	DA	N1-C6-N6	11.12	125.27	118.60
1	B	10	DT	O5'-P-OP2	11.11	124.03	110.70

*Continued on next page...*



*Continued from previous page...*

Mol	Chain	Res	Type	Atoms	Z	Observed(°)	Ideal(°)
1	B	7	DT	C4-C5-C7	11.10	125.66	119.00
1	B	11	DC	N3-C4-N4	10.97	125.68	118.00
1	A	4	DT	C5-C6-N1	-10.67	117.30	123.70
1	B	8	DG	C5-N7-C8	10.10	109.35	104.30
1	A	1	DT	C5-C4-O4	-10.07	117.85	124.90
1	A	4	DT	N3-C4-O4	-10.05	113.87	119.90
1	B	11	DC	N1-C2-O2	-10.02	112.89	118.90
1	A	1	DT	C5-C6-N1	-9.86	117.78	123.70
1	A	3	DA	C5-N7-C8	-9.84	98.98	103.90
1	B	8	DG	C1'-O4'-C4'	-9.44	100.66	110.10
1	B	7	DT	C2-N3-C4	-9.40	121.56	127.20
1	B	8	DG	N1-C6-O6	8.93	125.26	119.90
1	A	2	DG	P-O3'-C3'	8.67	130.11	119.70
1	B	10	DT	C5-C6-N1	-8.56	118.56	123.70
1	A	1	DT	C6-C5-C7	8.55	128.03	122.90
1	B	9	DA	N1-C6-N6	8.48	123.69	118.60
1	B	7	DT	N3-C4-C5	8.33	120.20	115.20
1	B	12	DA	C5-C6-N1	-8.10	113.65	117.70
1	B	10	DT	C6-N1-C2	8.09	125.35	121.30
1	A	3	DA	N3-C4-N9	-7.98	121.02	127.40
1	A	3	DA	O5'-P-OP2	7.91	120.20	110.70
1	A	3	DA	N1-C2-N3	-7.88	125.36	129.30
1	A	5	DC	OP1-P-OP2	7.83	131.35	119.60
1	B	12	DA	C5-N7-C8	-7.80	100.00	103.90
1	A	5	DC	C6-N1-C2	7.80	123.42	120.30
1	B	7	DT	N1-C2-O2	-7.68	116.95	123.10
1	A	1	DT	C6-N1-C2	7.62	125.11	121.30
1	A	6	DA	C5-C6-N1	-7.59	113.90	117.70
1	A	1	DT	C4-C5-C7	-7.53	114.48	119.00
1	B	11	DC	C5-C4-N4	-7.39	115.03	120.20
1	B	8	DG	P-O3'-C3'	7.21	128.35	119.70
1	A	2	DG	N3-C4-C5	7.18	132.19	128.60
1	A	2	DG	OP1-P-OP2	7.09	130.23	119.60
1	A	3	DA	C4-C5-N7	7.03	114.21	110.70
1	B	9	DA	P-O3'-C3'	-7.01	111.28	119.70
1	A	6	DA	C6-N1-C2	6.92	122.75	118.60
1	B	11	DC	C6-N1-C2	-6.87	117.55	120.30
1	B	8	DG	C4'-C3'-O3'	-6.80	92.70	109.70
1	B	11	DC	N3-C4-C5	-6.56	119.28	121.90
1	A	2	DG	O4'-C1'-C2'	-6.49	100.71	105.90
1	A	2	DG	O5'-P-OP1	-6.47	99.88	105.70
1	B	8	DG	C3'-C2'-C1'	-6.46	94.75	102.50

*Continued on next page...*

Continued from previous page...

Mol	Chain	Res	Type	Atoms	Z	Observed(°)	Ideal(°)
1	B	7	DT	C5-C6-N1	-6.45	119.83	123.70
1	B	11	DC	C4-C5-C6	-6.44	114.18	117.40
1	B	7	DT	C5-C4-O4	-6.42	120.40	124.90
1	A	2	DG	C8-N9-C4	6.30	108.92	106.40
1	A	3	DA	N9-C4-C5	-6.16	103.34	105.80
1	B	12	DA	OP1-P-OP2	-6.09	110.47	119.60
1	B	11	DC	C6-N1-C1'	6.05	128.06	120.80
1	B	10	DT	N3-C4-C5	6.03	118.82	115.20
1	B	7	DT	N1-C2-N3	6.00	118.20	114.60
1	B	12	DA	N7-C8-N9	5.94	116.77	113.80
1	A	3	DA	C6-C5-N7	-5.93	128.15	132.30
1	A	5	DC	C2-N1-C1'	-5.93	112.28	118.80
1	B	9	DA	O5'-P-OP2	5.84	117.71	110.70
1	B	9	DA	OP1-P-OP2	-5.78	110.93	119.60
1	B	7	DT	O3'-P-O5'	5.51	114.46	104.00
1	B	8	DG	O5'-C5'-C4'	-5.49	97.27	111.00
1	B	11	DC	O4'-C1'-C2'	-5.25	101.70	105.90
1	B	12	DA	C4-C5-N7	5.25	113.32	110.70
1	B	11	DC	N1-C2-N3	-5.16	115.59	119.20
1	B	8	DG	C6-N1-C2	5.14	128.18	125.10
1	B	8	DG	O5'-P-OP2	-5.11	101.11	105.70
1	A	4	DT	C5-C4-O4	-5.07	121.35	124.90
1	B	8	DG	O4'-C1'-C2'	5.06	109.95	105.90

There are no chirality outliers.

There are no planarity outliers.

## 5.2 Too-close contacts [\(i\)](#)

In the following table, the Non-H and H(model) columns list the number of non-hydrogen atoms and hydrogen atoms in the chain respectively. The H(added) column lists the number of hydrogen atoms added and optimized by MolProbity. The Clashes column lists the number of clashes within the asymmetric unit, whereas Symm-Clashes lists symmetry-related clashes.

Mol	Chain	Non-H	H(model)	H(added)	Clashes	Symm-Clashes
1	A	119	0	68	0	0
1	B	119	0	68	5	0
2	A	56	0	48	3	0
2	B	56	0	48	1	0
3	A	56	0	0	0	0
3	B	59	0	0	1	0

Continued on next page...

*Continued from previous page...*

Mol	Chain	Non-H	H(model)	H(added)	Clashes	Symm-Clashes
All	All	465	0	232	9	0

The all-atom clashscore is defined as the number of clashes found per 1000 atoms (including hydrogen atoms). The all-atom clashscore for this structure is 15.

All (9) close contacts within the same asymmetric unit are listed below, sorted by their clash magnitude.

Atom-1	Atom-2	Interatomic distance (Å)	Clash overlap (Å)
1:B:7:DT:H5'	1:B:7:DT:C6	2.01	0.95
1:B:7:DT:H5'	1:B:7:DT:H6	1.30	0.94
1:B:12:DA:P	1:B:12:DA:C5'	2.63	0.87
1:B:10:DT:OP1	3:B:105:HOH:O	2.04	0.75
2:A:14:NGM:O15	2:A:14:NGM:H242	2.05	0.56
2:A:14:NGM:O15	2:A:14:NGM:C24	2.59	0.50
2:B:13:NGM:O5	2:B:13:NGM:O6	2.31	0.47
1:B:7:DT:C6	1:B:7:DT:C5'	2.86	0.46
2:A:14:NGM:H252	2:A:14:NGM:H263	2.01	0.43

There are no symmetry-related clashes.

## 5.3 Torsion angles [i](#)

### 5.3.1 Protein backbone [i](#)

There are no protein molecules in this entry.

### 5.3.2 Protein sidechains [i](#)

There are no protein molecules in this entry.

### 5.3.3 RNA [i](#)

There are no RNA molecules in this entry.

## 5.4 Non-standard residues in protein, DNA, RNA chains [i](#)

There are no non-standard protein/DNA/RNA residues in this entry.

## 5.5 Carbohydrates [i](#)

There are no monosaccharides in this entry.

## 5.6 Ligand geometry [i](#)

2 ligands are modelled in this entry.

In the following table, the Counts columns list the number of bonds (or angles) for which Mogul statistics could be retrieved, the number of bonds (or angles) that are observed in the model and the number of bonds (or angles) that are defined in the Chemical Component Dictionary. The Link column lists molecule types, if any, to which the group is linked. The Z score for a bond length (or angle) is the number of standard deviations the observed value is removed from the expected value. A bond length (or angle) with  $|Z| > 2$  is considered an outlier worth inspection. RMSZ is the root-mean-square of all Z scores of the bond lengths (or angles).

Mol	Type	Chain	Res	Link	Bond lengths			Bond angles		
					Counts	RMSZ	# Z  > 2	Counts	RMSZ	# Z  > 2
2	NGM	B	13	-	59,62,62	1.60	12 (20%)	72,101,101	2.23	18 (25%)
2	NGM	A	14	-	59,62,62	1.69	12 (20%)	72,101,101	2.20	23 (31%)

In the following table, the Chirals column lists the number of chiral outliers, the number of chiral centers analysed, the number of these observed in the model and the number defined in the Chemical Component Dictionary. Similar counts are reported in the Torsion and Rings columns. '-' means no outliers of that kind were identified.

Mol	Type	Chain	Res	Link	Chirals	Torsions	Rings
2	NGM	B	13	-	-	2/21/113/113	0/1/7/7
2	NGM	A	14	-	1/1/17/17	3/21/113/113	0/1/7/7

All (24) bond length outliers are listed below:

Mol	Chain	Res	Type	Atoms	Z	Observed(Å)	Ideal(Å)
2	B	13	NGM	C21-C18	-4.76	1.34	1.41
2	A	14	NGM	O1-C1	4.72	1.44	1.37
2	A	14	NGM	C11-C21	-4.68	1.32	1.39
2	B	13	NGM	O1-C1	3.61	1.43	1.37
2	A	14	NGM	C17-C4	-3.28	1.36	1.41
2	B	13	NGM	O4'-C4'	3.05	1.47	1.42
2	B	13	NGM	C11-C21	-2.97	1.35	1.39
2	A	14	NGM	O4'-C4'	2.92	1.47	1.42
2	A	14	NGM	C10-C14	2.82	1.55	1.52
2	B	13	NGM	C1-C2	-2.81	1.36	1.41

*Continued on next page...*

*Continued from previous page...*

Mol	Chain	Res	Type	Atoms	Z	Observed(Å)	Ideal(Å)
2	A	14	NGM	C1-C2	-2.80	1.36	1.41
2	A	14	NGM	O10-C15	-2.77	1.39	1.45
2	A	14	NGM	C21-C18	-2.70	1.37	1.41
2	A	14	NGM	C1'-C2'	2.64	1.57	1.53
2	A	14	NGM	C3-C4	-2.54	1.35	1.38
2	B	13	NGM	O9-C9	2.45	1.48	1.44
2	A	14	NGM	O14-C14	2.45	1.27	1.21
2	B	13	NGM	C4'-C5'	2.38	1.59	1.52
2	B	13	NGM	O14-C14	2.22	1.26	1.21
2	B	13	NGM	O10-C15	-2.12	1.40	1.45
2	A	14	NGM	C11-C20	-2.07	1.36	1.39
2	B	13	NGM	O5-C5	-2.07	1.19	1.22
2	B	13	NGM	C19-C7	2.06	1.54	1.51
2	B	13	NGM	C8-C9	2.03	1.57	1.53

All (41) bond angle outliers are listed below:

Mol	Chain	Res	Type	Atoms	Z	Observed(°)	Ideal(°)
2	B	13	NGM	O14-C14-C10	9.06	140.52	125.22
2	A	14	NGM	C13-C9-C8	6.60	122.86	110.67
2	B	13	NGM	O7-C1'-C2'	6.04	120.84	109.09
2	A	14	NGM	C31-C32-C33	5.71	119.25	110.57
2	A	14	NGM	O7-C1'-C2'	5.70	120.17	109.09
2	A	14	NGM	O16-C33-C34	5.49	122.33	110.23
2	B	13	NGM	O9-C9-C13	-5.18	96.85	108.08
2	A	14	NGM	O1-C30-C31	5.09	121.73	110.23
2	B	13	NGM	O10-C14-O14	-4.66	114.78	123.85
2	A	14	NGM	C34-C33-C32	4.15	116.70	110.50
2	B	13	NGM	O1'-C1'-C2'	-3.76	104.98	112.33
2	A	14	NGM	O9-C9-C13	-3.74	99.97	108.08
2	B	13	NGM	O16-C33-C34	3.73	118.46	110.23
2	B	13	NGM	C20-C10-C14	-3.68	101.66	110.17
2	A	14	NGM	O15-C31-C30	3.59	118.62	110.08
2	B	13	NGM	C11-C20-C10	-3.32	113.84	121.16
2	B	13	NGM	C30-C31-C32	3.20	114.36	109.20
2	B	13	NGM	O10-C14-C10	-3.14	104.70	110.74
2	B	13	NGM	O4-C4-C17	-3.12	115.38	121.14
2	A	14	NGM	O5-C5-C17	-3.08	116.29	121.44
2	A	14	NGM	C1'-O1'-C5'	-2.87	108.73	113.63
2	B	13	NGM	C13-C9-C8	2.87	115.96	110.67
2	A	14	NGM	C15-O10-C14	2.87	122.42	115.92
2	B	13	NGM	C19-C20-C10	2.78	124.20	115.52

*Continued on next page...*

Continued from previous page...

Mol	Chain	Res	Type	Atoms	Z	Observed(°)	Ideal(°)
2	B	13	NGM	C3-C4-C17	2.76	124.00	120.92
2	A	14	NGM	O1'-C5'-C4'	2.74	116.40	108.93
2	A	14	NGM	C3-C2-C1	2.63	120.82	117.15
2	A	14	NGM	C30-C31-C32	2.58	113.36	109.20
2	A	14	NGM	C26-O4'-C4'	-2.44	110.34	114.46
2	B	13	NGM	O5-C5-C18	-2.42	117.40	121.44
2	B	13	NGM	C15-O10-C14	-2.38	110.52	115.92
2	A	14	NGM	O15-C31-C32	2.37	115.27	109.14
2	A	14	NGM	C19-C20-C10	2.29	122.69	115.52
2	A	14	NGM	C29-O2'-C2'	2.29	118.32	114.46
2	B	13	NGM	O1-C30-C31	2.28	115.39	110.23
2	A	14	NGM	C17-C16-C12	2.17	122.94	120.00
2	A	14	NGM	O10-C14-O14	-2.17	119.62	123.85
2	B	13	NGM	C9-C8-C7	2.09	119.46	114.23
2	A	14	NGM	O7-C7-C19	-2.06	102.90	107.54
2	A	14	NGM	C1-C16-C12	-2.04	119.49	122.55
2	A	14	NGM	C31-C32-N1	2.02	121.27	113.39

All (1) chirality outliers are listed below:

Mol	Chain	Res	Type	Atom
2	A	14	NGM	C32

All (5) torsion outliers are listed below:

Mol	Chain	Res	Type	Atoms
2	A	14	NGM	O14-C14-O10-C15
2	A	14	NGM	C10-C14-O10-C15
2	B	13	NGM	C5'-C4'-O4'-C26
2	B	13	NGM	C3'-C4'-O4'-C26
2	A	14	NGM	O1'-C1'-O7-C7

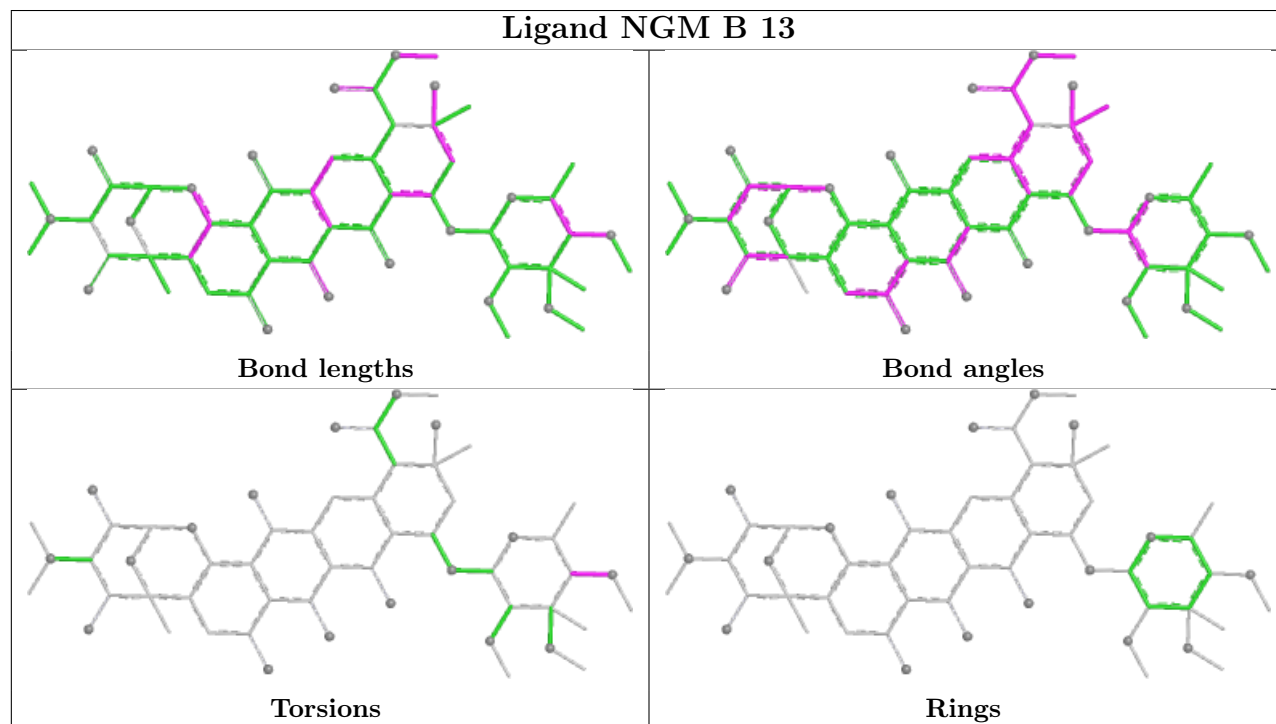
There are no ring outliers.

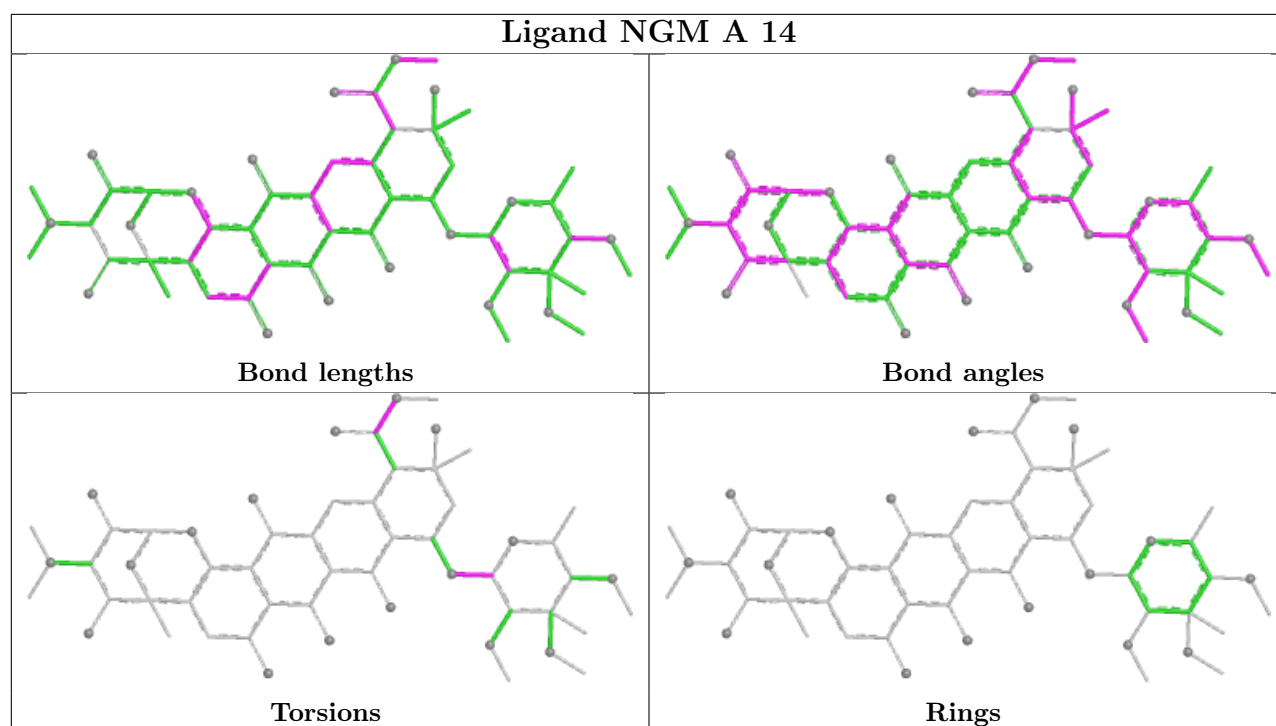
2 monomers are involved in 4 short contacts:

Mol	Chain	Res	Type	Clashes	Symm-Clashes
2	B	13	NGM	1	0
2	A	14	NGM	3	0

The following is a two-dimensional graphical depiction of Mogul quality analysis of bond lengths, bond angles, torsion angles, and ring geometry for all instances of the Ligand of Interest. In addition, ligands with molecular weight > 250 and outliers as shown on the validation Tables will

also be included. For torsion angles, if less than 5% of the Mogul distribution of torsion angles is within 10 degrees of the torsion angle in question, then that torsion angle is considered an outlier. Any bond that is central to one or more torsion angles identified as an outlier by Mogul will be highlighted in the graph. For rings, the root-mean-square deviation (RMSD) between the ring in question and similar rings identified by Mogul is calculated over all ring torsion angles. If the average RMSD is greater than 60 degrees and the minimal RMSD between the ring in question and any Mogul-identified rings is also greater than 60 degrees, then that ring is considered an outlier. The outliers are highlighted in purple. The color gray indicates Mogul did not find sufficient equivalents in the CSD to analyse the geometry.





## 5.7 Other polymers [i](#)

There are no such residues in this entry.

## 5.8 Polymer linkage issues [i](#)

There are no chain breaks in this entry.



## 6 Fit of model and data [i](#)

### 6.1 Protein, DNA and RNA chains [i](#)

In the following table, the column labelled '#RSRZ > 2' contains the number (and percentage) of RSRZ outliers, followed by percent RSRZ outliers for the chain as percentile scores relative to all X-ray entries and entries of similar resolution. The OWAB column contains the minimum, median, 95<sup>th</sup> percentile and maximum values of the occupancy-weighted average B-factor per residue. The column labelled 'Q < 0.9' lists the number of (and percentage) of residues with an average occupancy less than 0.9.

Mol	Chain	Analysed	<RSRZ>	#RSRZ>2	OWAB(Å <sup>2</sup> )	Q<0.9
1	A	6/6 (100%)	-0.73	0 100 100	19, 23, 25, 25	0
1	B	6/6 (100%)	-0.60	0 100 100	25, 26, 27, 29	0
All	All	12/12 (100%)	-0.66	0 100 100	19, 25, 27, 29	0

There are no RSRZ outliers to report.

### 6.2 Non-standard residues in protein, DNA, RNA chains [i](#)

There are no non-standard protein/DNA/RNA residues in this entry.

### 6.3 Carbohydrates [i](#)

There are no monosaccharides in this entry.

### 6.4 Ligands [i](#)

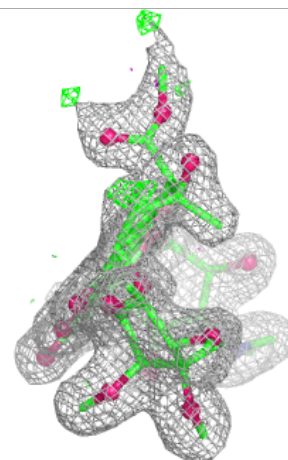
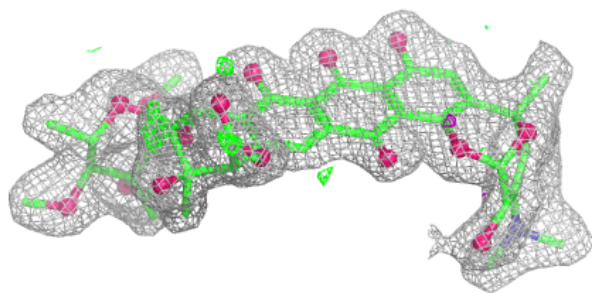
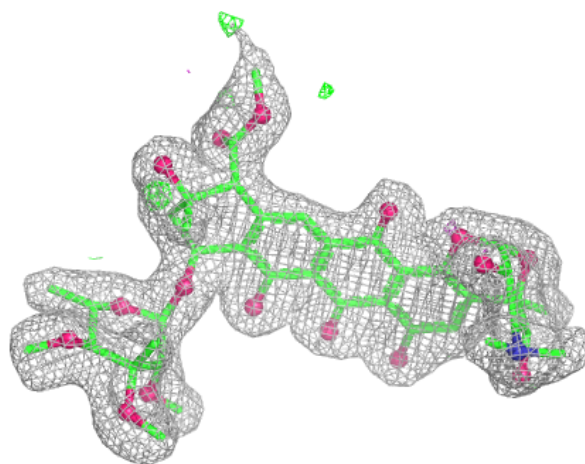
In the following table, the Atoms column lists the number of modelled atoms in the group and the number defined in the chemical component dictionary. The B-factors column lists the minimum, median, 95<sup>th</sup> percentile and maximum values of B factors of atoms in the group. The column labelled 'Q < 0.9' lists the number of atoms with occupancy less than 0.9.

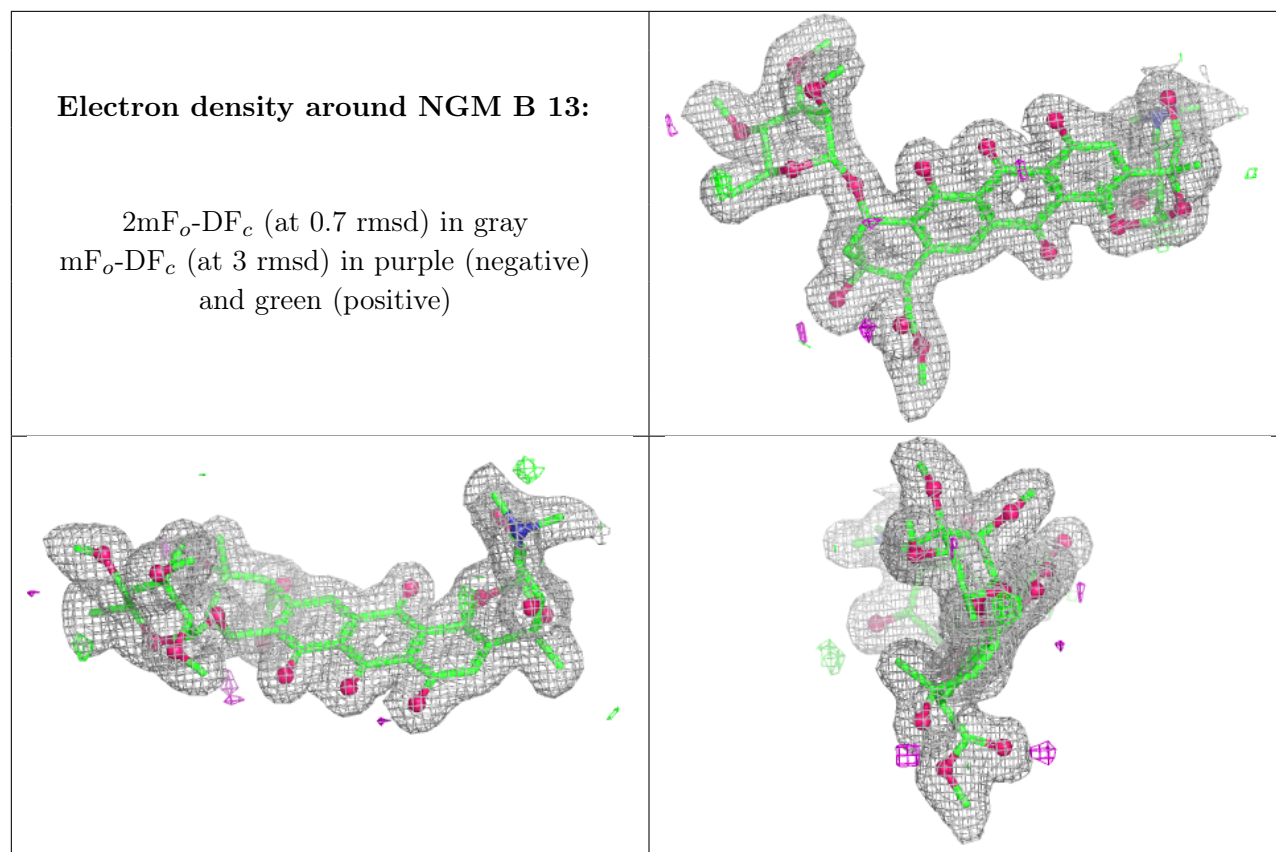
Mol	Type	Chain	Res	Atoms	RSCC	RSR	B-factors(Å <sup>2</sup> )	Q<0.9
2	NGM	A	14	56/56	0.92	0.11	14,25,32,35	0
2	NGM	B	13	56/56	0.94	0.09	10,18,24,26	0

The following is a graphical depiction of the model fit to experimental electron density of all instances of the Ligand of Interest. In addition, ligands with molecular weight > 250 and outliers as shown on the geometry validation Tables will also be included. Each fit is shown from different orientation to approximate a three-dimensional view.

**Electron density around NGM A 14:**

$2mF_o-DF_c$  (at 0.7 rmsd) in gray  
 $mF_o-DF_c$  (at 3 rmsd) in purple (negative)  
and green (positive)





## 6.5 Other polymers [i](#)

There are no such residues in this entry.