



Full wwPDB X-ray Structure Validation Report ⓘ

May 25, 2020 – 09:19 am BST

PDB ID : 1A0J
Title : CRYSTAL STRUCTURE OF A NON-PSYCHROPHILIC TRYPSIN FROM A COLD-ADAPTED FISH SPECIES.
Authors : Schroeder, H.-K.; Willassen, N.P.; Smalaas, A.O.
Deposited on : 1997-12-01
Resolution : 1.70 Å(reported)

This is a Full wwPDB X-ray Structure Validation Report for a publicly released PDB entry.

We welcome your comments at validation@mail.wwpdb.org

A user guide is available at

<https://www.wwpdb.org/validation/2017/XrayValidationReportHelp>

with specific help available everywhere you see the ⓘ symbol.

The following versions of software and data (see [references ⓘ](#)) were used in the production of this report:

MolProbity : 4.02b-467
Mogul : 1.8.5 (274361), CSD as541be (2020)
Xtriage (Phenix) : 1.13
EDS : 2.11
Percentile statistics : 20191225.v01 (using entries in the PDB archive December 25th 2019)
Refmac : 5.8.0158
CCP4 : 7.0.044 (Gargrove)
Ideal geometry (proteins) : Engh & Huber (2001)
Ideal geometry (DNA, RNA) : Parkinson et al. (1996)
Validation Pipeline (wwPDB-VP) : 2.11

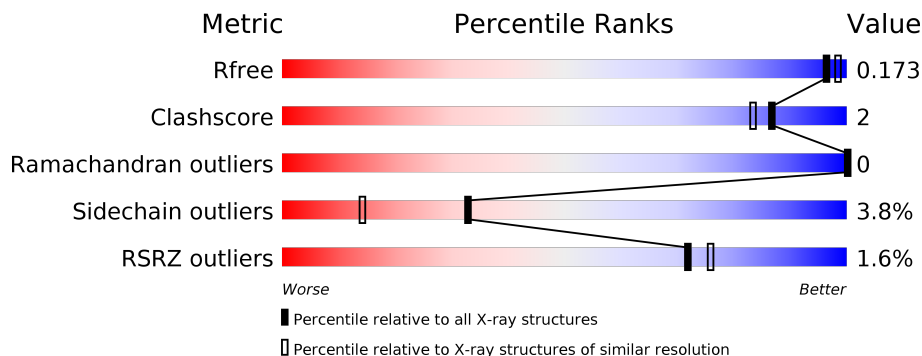
1 Overall quality at a glance

The following experimental techniques were used to determine the structure:

X-RAY DIFFRACTION

The reported resolution of this entry is 1.70 Å.

Percentile scores (ranging between 0-100) for global validation metrics of the entry are shown in the following graphic. The table shows the number of entries on which the scores are based.



Metric	Whole archive (#Entries)	Similar resolution (#Entries, resolution range(Å))
R_{free}	130704	4298 (1.70-1.70)
Clashscore	141614	4695 (1.70-1.70)
Ramachandran outliers	138981	4610 (1.70-1.70)
Sidechain outliers	138945	4610 (1.70-1.70)
RSRZ outliers	127900	4222 (1.70-1.70)

The table below summarises the geometric issues observed across the polymeric chains and their fit to the electron density. The red, orange, yellow and green segments on the lower bar indicate the fraction of residues that contain outliers for ≥ 3 , 2, 1 and 0 types of geometric quality criteria respectively. A grey segment represents the fraction of residues that are not modelled. The numeric value for each fraction is indicated below the corresponding segment, with a dot representing fractions $\leq 5\%$. The upper red bar (where present) indicates the fraction of residues that have poor fit to the electron density. The numeric value is given above the bar.

Mol	Chain	Length	Quality of chain
1	A	223	 2% 91% 8%
1	B	223	 2% 91% 7%
1	C	223	 2% 90% 9%
1	D	223	 2% 89% 9%

2 Entry composition [i](#)

There are 5 unique types of molecules in this entry. The entry contains 7106 atoms, of which 0 are hydrogens and 0 are deuteriums.

In the tables below, the ZeroOcc column contains the number of atoms modelled with zero occupancy, the AltConf column contains the number of residues with at least one atom in alternate conformation and the Trace column contains the number of residues modelled with at most 2 atoms.

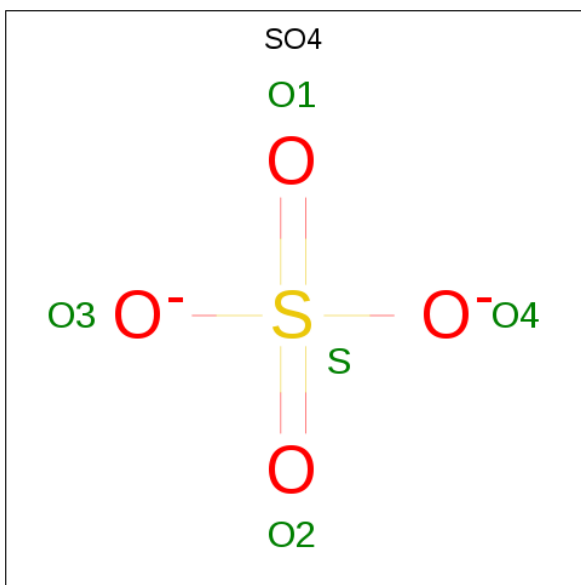
- Molecule 1 is a protein called TRYPSIN.

Mol	Chain	Residues	Atoms					ZeroOcc	AltConf	Trace
			Total	C	N	O	S			
1	A	223	Total 1660	C 1022	N 291	O 330	S 17	46	0	0
1	B	223	Total 1660	C 1022	N 291	O 330	S 17	72	0	0
1	C	223	Total 1660	C 1022	N 291	O 330	S 17	79	0	0
1	D	223	Total 1660	C 1022	N 291	O 330	S 17	79	0	0

- Molecule 2 is CALCIUM ION (three-letter code: CA) (formula: Ca).

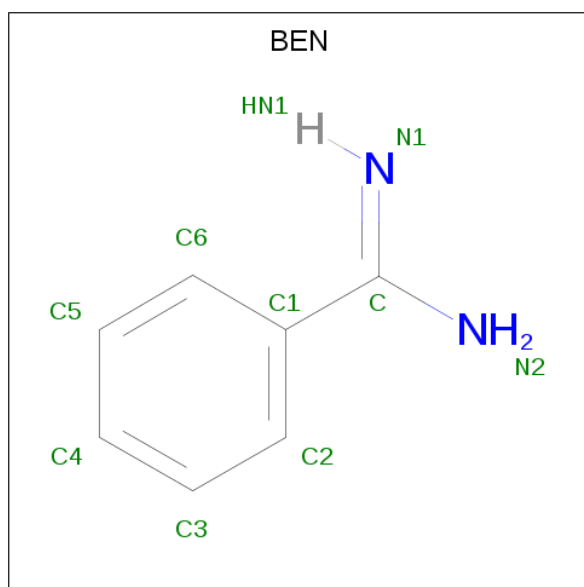
Mol	Chain	Residues	Atoms		ZeroOcc	AltConf
2	A	1	Total 1	Ca 1	0	0

- Molecule 3 is SULFATE ION (three-letter code: SO4) (formula: O₄S).



Mol	Chain	Residues	Atoms	ZeroOcc	AltConf
3	A	1	Total O S 5 4 1	0	0
3	A	1	Total O S 5 4 1	0	0
3	B	1	Total O S 5 4 1	0	0
3	B	1	Total O S 5 4 1	0	0
3	C	1	Total O S 5 4 1	0	0
3	C	1	Total O S 5 4 1	0	0
3	D	1	Total O S 5 4 1	0	0
3	D	1	Total O S 5 4 1	0	0
3	D	1	Total O S 5 4 1	0	0
3	D	1	Total O S 5 4 1	0	0

- Molecule 4 is BENZAMIDINE (three-letter code: BEN) (formula: C₇H₈N₂).



Mol	Chain	Residues	Atoms	ZeroOcc	AltConf
4	A	1	Total C N 9 7 2	0	0
4	B	1	Total C N 9 7 2	0	0

Continued on next page...

Continued from previous page...

Mol	Chain	Residues	Atoms			ZeroOcc	AltConf
4	C	1	Total	C	N	0	0
			9	7	2		
4	D	1	Total	C	N	0	0
			9	7	2		

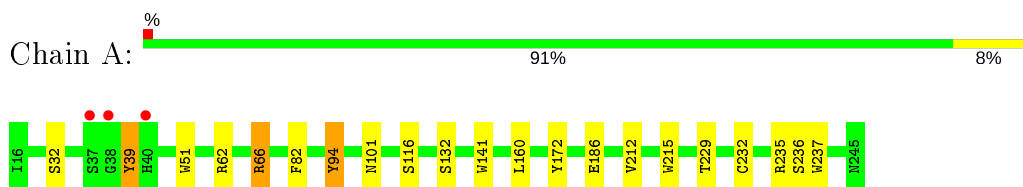
- Molecule 5 is water.

Mol	Chain	Residues	Atoms		ZeroOcc	AltConf
5	A	118	Total	O	0	0
			118	118		
5	B	82	Total	O	0	0
			82	82		
5	C	78	Total	O	0	0
			78	78		
5	D	101	Total	O	0	0
			101	101		

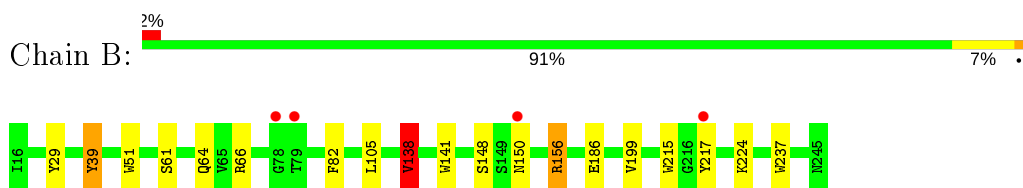
3 Residue-property plots [i](#)

These plots are drawn for all protein, RNA and DNA chains in the entry. The first graphic for a chain summarises the proportions of the various outlier classes displayed in the second graphic. The second graphic shows the sequence view annotated by issues in geometry and electron density. Residues are color-coded according to the number of geometric quality criteria for which they contain at least one outlier: green = 0, yellow = 1, orange = 2 and red = 3 or more. A red dot above a residue indicates a poor fit to the electron density ($RSRZ > 2$). Stretches of 2 or more consecutive residues without any outlier are shown as a green connector. Residues present in the sample, but not in the model, are shown in grey.

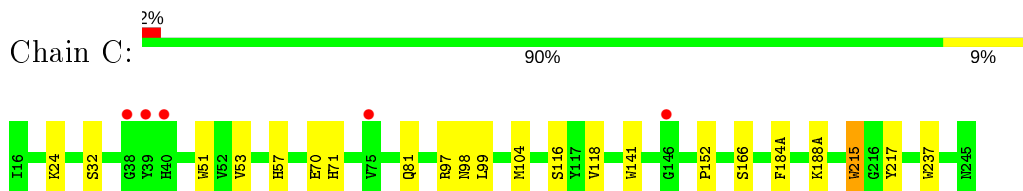
- Molecule 1: TRYPSIN



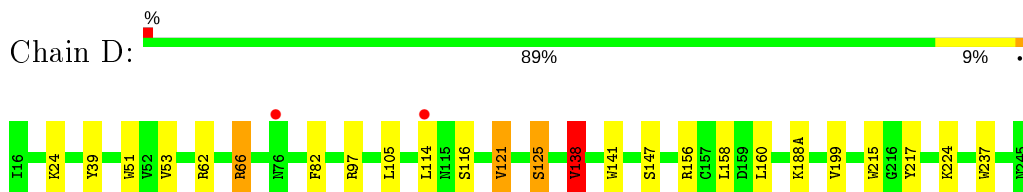
- Molecule 1: TRYPSIN



- Molecule 1: TRYPSIN



- Molecule 1: TRYPSIN



4 Data and refinement statistics

Property	Value	Source
Space group	P 21 21 21	Depositor
Cell constants a, b, c, α , β , γ	65.91Å 83.11Å 154.79Å 90.00° 90.00° 90.00°	Depositor
Resolution (Å)	8.00 – 1.70 15.00 – 1.70	Depositor EDS
% Data completeness (in resolution range)	73.1 (8.00-1.70) 81.2 (15.00-1.70)	Depositor EDS
R_{merge}	0.12	Depositor
R_{sym}	(Not available)	Depositor
$\langle I/\sigma(I) \rangle$ ¹	2.67 (at 1.70Å)	Xtrriage
Refinement program	X-PLOR 3.8	Depositor
R, R_{free}	0.173 , 0.215 0.177 , 0.173	Depositor DCC
R_{free} test set	3866 reflections (5.08%)	wwPDB-VP
Wilson B-factor (Å ²)	18.4	Xtrriage
Anisotropy	0.165	Xtrriage
Bulk solvent k_{sol} (e/Å ³), B_{sol} (Å ²)	0.32 , 68.3	EDS
L-test for twinning ²	$\langle L \rangle = 0.50$, $\langle L^2 \rangle = 0.33$	Xtrriage
Estimated twinning fraction	No twinning to report.	Xtrriage
F_o, F_c correlation	0.96	EDS
Total number of atoms	7106	wwPDB-VP
Average B, all atoms (Å ²)	22.0	wwPDB-VP

Xtrriage's analysis on translational NCS is as follows: *The largest off-origin peak in the Patterson function is 4.18% of the height of the origin peak. No significant pseudotranslation is detected.*

¹ Intensities estimated from amplitudes.

² Theoretical values of $\langle |L| \rangle$, $\langle L^2 \rangle$ for acentric reflections are 0.5, 0.333 respectively for untwinned datasets, and 0.375, 0.2 for perfectly twinned datasets.

5 Model quality [i](#)

5.1 Standard geometry [i](#)

Bond lengths and bond angles in the following residue types are not validated in this section: CA, BEN, SO4

The Z score for a bond length (or angle) is the number of standard deviations the observed value is removed from the expected value. A bond length (or angle) with $|Z| > 5$ is considered an outlier worth inspection. RMSZ is the root-mean-square of all Z scores of the bond lengths (or angles).

Mol	Chain	Bond lengths		Bond angles	
		RMSZ	# Z >5	RMSZ	# Z >5
1	A	0.73	0/1694	1.34	18/2293 (0.8%)
1	B	0.73	0/1694	1.37	18/2293 (0.8%)
1	C	0.74	0/1694	1.31	17/2293 (0.7%)
1	D	0.74	0/1694	1.37	19/2293 (0.8%)
All	All	0.73	0/6776	1.35	72/9172 (0.8%)

Chiral center outliers are detected by calculating the chiral volume of a chiral center and verifying if the center is modelled as a planar moiety or with the opposite hand. A planarity outlier is detected by checking planarity of atoms in a peptide group, atoms in a mainchain group or atoms of a sidechain that are expected to be planar.

Mol	Chain	#Chirality outliers	#Planarity outliers
1	A	0	1

There are no bond length outliers.

All (72) bond angle outliers are listed below:

Mol	Chain	Res	Type	Atoms	Z	Observed(°)	Ideal(°)
1	B	215	TRP	CD1-CG-CD2	8.58	113.17	106.30
1	D	237	TRP	CD1-CG-CD2	8.51	113.11	106.30
1	C	141	TRP	CD1-CG-CD2	8.34	112.97	106.30
1	D	138	VAL	CB-CA-C	-8.32	95.59	111.40
1	D	215	TRP	CD1-CG-CD2	8.24	112.89	106.30
1	A	237	TRP	CD1-CG-CD2	8.15	112.82	106.30
1	B	66	ARG	NE-CZ-NH2	-8.12	116.24	120.30
1	D	141	TRP	CD1-CG-CD2	8.11	112.79	106.30
1	B	141	TRP	CD1-CG-CD2	8.02	112.72	106.30
1	B	51	TRP	CD1-CG-CD2	7.98	112.69	106.30
1	C	51	TRP	CD1-CG-CD2	7.87	112.59	106.30
1	B	215	TRP	CE2-CD2-CG	-7.69	101.15	107.30

Continued on next page...

Continued from previous page...

Mol	Chain	Res	Type	Atoms	Z	Observed(°)	Ideal(°)
1	A	141	TRP	CD1-CG-CD2	7.68	112.44	106.30
1	C	215	TRP	CD1-CG-CD2	7.66	112.43	106.30
1	D	215	TRP	CE2-CD2-CG	-7.66	101.18	107.30
1	A	51	TRP	CE2-CD2-CG	-7.64	101.19	107.30
1	C	51	TRP	CE2-CD2-CG	-7.56	101.25	107.30
1	B	51	TRP	CE2-CD2-CG	-7.50	101.30	107.30
1	A	51	TRP	CD1-CG-CD2	7.45	112.26	106.30
1	A	237	TRP	CE2-CD2-CG	-7.43	101.35	107.30
1	A	141	TRP	CE2-CD2-CG	-7.37	101.41	107.30
1	B	237	TRP	CD1-CG-CD2	7.35	112.18	106.30
1	D	237	TRP	CE2-CD2-CG	-7.25	101.50	107.30
1	D	141	TRP	CE2-CD2-CG	-7.25	101.50	107.30
1	C	141	TRP	CE2-CD2-CG	-7.21	101.53	107.30
1	D	51	TRP	CD1-CG-CD2	7.21	112.06	106.30
1	B	138	VAL	CB-CA-C	-7.18	97.75	111.40
1	C	215	TRP	CE2-CD2-CG	-7.18	101.56	107.30
1	B	141	TRP	CE2-CD2-CG	-7.08	101.64	107.30
1	B	237	TRP	CE2-CD2-CG	-6.93	101.76	107.30
1	D	217	TYR	CB-CG-CD2	-6.86	116.89	121.00
1	A	215	TRP	CD1-CG-CD2	6.80	111.74	106.30
1	C	237	TRP	CD1-CG-CD2	6.67	111.64	106.30
1	D	51	TRP	CE2-CD2-CG	-6.56	102.05	107.30
1	C	57	HIS	CA-CB-CG	6.41	124.50	113.60
1	A	51	TRP	CG-CD2-CE3	6.38	139.64	133.90
1	A	62	ARG	NE-CZ-NH1	6.35	123.48	120.30
1	A	215	TRP	CE2-CD2-CG	-6.32	102.25	107.30
1	C	97	ARG	NE-CZ-NH2	-6.29	117.16	120.30
1	C	237	TRP	CE2-CD2-CG	-6.22	102.32	107.30
1	A	66	ARG	NE-CZ-NH1	6.01	123.31	120.30
1	D	121	VAL	CB-CA-C	-5.87	100.24	111.40
1	A	32	SER	N-CA-CB	5.87	119.31	110.50
1	C	141	TRP	CB-CG-CD1	-5.79	119.47	127.00
1	B	29	TYR	CB-CG-CD2	-5.75	117.55	121.00
1	B	156	ARG	NE-CZ-NH2	-5.74	117.43	120.30
1	C	51	TRP	CG-CD2-CE3	5.74	139.07	133.90
1	D	215	TRP	CG-CD2-CE3	5.62	138.96	133.90
1	B	66	ARG	NE-CZ-NH1	5.59	123.09	120.30
1	B	51	TRP	CG-CD2-CE3	5.54	138.88	133.90
1	A	141	TRP	CB-CG-CD1	-5.50	119.84	127.00
1	D	237	TRP	CG-CD2-CE3	5.47	138.82	133.90
1	D	138	VAL	CG1-CB-CG2	5.47	119.65	110.90
1	D	237	TRP	CG-CD1-NE1	-5.47	104.63	110.10

Continued on next page...

Continued from previous page...

Mol	Chain	Res	Type	Atoms	Z	Observed(°)	Ideal(°)
1	D	215	TRP	CG-CD1-NE1	-5.46	104.64	110.10
1	A	237	TRP	CG-CD2-CE3	5.44	138.80	133.90
1	C	141	TRP	CG-CD1-NE1	-5.44	104.66	110.10
1	A	32	SER	CB-CA-C	-5.42	99.79	110.10
1	D	51	TRP	CG-CD2-CE3	5.32	138.69	133.90
1	C	217	TYR	CB-CG-CD2	-5.30	117.82	121.00
1	B	215	TRP	CG-CD1-NE1	-5.29	104.81	110.10
1	B	39	TYR	CB-CG-CD2	-5.28	117.83	121.00
1	A	172	TYR	CB-CG-CD1	-5.27	117.84	121.00
1	C	70	GLU	N-CA-CB	-5.25	101.15	110.60
1	B	237	TRP	CG-CD2-CE3	5.24	138.61	133.90
1	A	39	TYR	CA-CB-CG	-5.22	103.49	113.40
1	B	215	TRP	CG-CD2-CE3	5.22	138.59	133.90
1	A	94	TYR	CB-CG-CD1	-5.14	117.92	121.00
1	C	141	TRP	CG-CD2-CE3	5.12	138.50	133.90
1	C	215	TRP	CG-CD2-CE3	5.08	138.47	133.90
1	D	237	TRP	CB-CG-CD1	-5.06	120.42	127.00
1	D	138	VAL	N-CA-CB	5.02	122.55	111.50

There are no chirality outliers.

All (1) planarity outliers are listed below:

Mol	Chain	Res	Type	Group
1	A	39	TYR	Sidechain

5.2 Too-close contacts [i](#)

In the following table, the Non-H and H(model) columns list the number of non-hydrogen atoms and hydrogen atoms in the chain respectively. The H(added) column lists the number of hydrogen atoms added and optimized by MolProbity. The Clashes column lists the number of clashes within the asymmetric unit, whereas Symm-Clashes lists symmetry related clashes.

Mol	Chain	Non-H	H(model)	H(added)	Clashes	Symm-Clashes
1	A	1660	0	1584	7	0
1	B	1660	0	1584	6	0
1	C	1660	0	1584	4	0
1	D	1660	0	1584	10	0
2	A	1	0	0	0	0
3	A	10	0	0	0	0
3	B	10	0	0	0	0
3	C	10	0	0	1	0

Continued on next page...

Continued from previous page...

Mol	Chain	Non-H	H(model)	H(added)	Clashes	Symm-Clashes
3	D	20	0	0	0	0
4	A	9	0	7	0	0
4	B	9	0	7	0	0
4	C	9	0	7	1	0
4	D	9	0	7	0	0
5	A	118	0	0	0	0
5	B	82	0	0	0	0
5	C	78	0	0	1	0
5	D	101	0	0	2	0
All	All	7106	0	6364	26	0

The all-atom clashscore is defined as the number of clashes found per 1000 atoms (including hydrogen atoms). The all-atom clashscore for this structure is 2.

All (26) close contacts within the same asymmetric unit are listed below, sorted by their clash magnitude.

Atom-1	Atom-2	Interatomic distance (Å)	Clash overlap (Å)
1:D:125:SER:HB2	5:D:501:HOH:O	2.00	0.61
1:B:138:VAL:HG13	1:B:199:VAL:HG22	1.84	0.58
1:A:232:CYS:HB2	1:A:235:ARG:NH1	2.20	0.56
1:A:66:ARG:HG2	1:A:82:PHE:HD1	1.70	0.55
1:A:94:TYR:O	1:B:61:SER:HB2	2.08	0.54
1:A:66:ARG:HG2	1:A:82:PHE:CD1	2.45	0.52
1:D:62:ARG:HD2	5:D:468:HOH:O	2.10	0.52
1:D:66:ARG:HG3	1:D:82:PHE:CE1	2.49	0.48
1:D:138:VAL:HG13	1:D:199:VAL:HG22	1.97	0.46
1:C:98:ASN:HB2	5:C:326:HOH:O	2.16	0.46
1:C:184(A):PHE:CD2	1:C:188(A):LYS:HB2	2.52	0.45
1:D:158:LEU:HD11	1:D:188(A):LYS:HB3	1.99	0.44
1:D:138:VAL:HG22	1:D:160:LEU:HD22	1.99	0.44
1:D:224:LYS:HA	1:D:224:LYS:HD3	1.88	0.43
1:B:156:ARG:HA	1:B:156:ARG:HD3	1.87	0.43
1:B:217:TYR:HB2	1:B:224:LYS:HD2	2.00	0.43
1:B:64:GLN:NE2	1:B:82:PHE:HB3	2.34	0.43
1:A:186:GLU:HB3	1:D:114:LEU:HD23	2.01	0.42
1:A:212:VAL:HB	1:A:229:THR:HB	2.02	0.42
1:D:138:VAL:HG23	1:D:158:LEU:HB3	2.03	0.41
1:B:224:LYS:HD3	1:B:224:LYS:HA	1.94	0.41
1:C:81:GLN:NE2	1:C:118:VAL:HG21	2.36	0.41
1:D:156:ARG:HA	1:D:156:ARG:HD3	1.82	0.41
1:A:94:TYR:HA	1:A:101:ASN:HB2	2.02	0.40

Continued on next page...

Continued from previous page...

Atom-1	Atom-2	Interatomic distance (Å)	Clash overlap (Å)
3:C:248:SO4:O1	4:C:246:BEN:H4	2.22	0.40
1:C:99:LEU:HD12	1:C:215:TRP:HB3	2.03	0.40

There are no symmetry-related clashes.

5.3 Torsion angles [i](#)

5.3.1 Protein backbone [i](#)

In the following table, the Percentiles column shows the percent Ramachandran outliers of the chain as a percentile score with respect to all X-ray entries followed by that with respect to entries of similar resolution.

The Analysed column shows the number of residues for which the backbone conformation was analysed, and the total number of residues.

Mol	Chain	Analysed	Favoured	Allowed	Outliers	Percentiles	
1	A	221/223 (99%)	219 (99%)	2 (1%)	0	100	100
1	B	221/223 (99%)	213 (96%)	8 (4%)	0	100	100
1	C	221/223 (99%)	219 (99%)	2 (1%)	0	100	100
1	D	221/223 (99%)	215 (97%)	6 (3%)	0	100	100
All	All	884/892 (99%)	866 (98%)	18 (2%)	0	100	100

There are no Ramachandran outliers to report.

5.3.2 Protein sidechains [i](#)

In the following table, the Percentiles column shows the percent sidechain outliers of the chain as a percentile score with respect to all X-ray entries followed by that with respect to entries of similar resolution.

The Analysed column shows the number of residues for which the sidechain conformation was analysed, and the total number of residues.

Mol	Chain	Analysed	Rotameric	Outliers	Percentiles	
1	A	189/189 (100%)	185 (98%)	4 (2%)	53	36
1	B	189/189 (100%)	183 (97%)	6 (3%)	39	20
1	C	189/189 (100%)	181 (96%)	8 (4%)	30	12

Continued on next page...

Continued from previous page...

Mol	Chain	Analysed	Rotameric	Outliers	Percentiles	
1	D	189/189 (100%)	178 (94%)	11 (6%)	20	6
All	All	756/756 (100%)	727 (96%)	29 (4%)	33	14

All (29) residues with a non-rotameric sidechain are listed below:

Mol	Chain	Res	Type
1	A	116	SER
1	A	132	SER
1	A	160	LEU
1	A	236	SER
1	B	39	TYR
1	B	105	LEU
1	B	138	VAL
1	B	148	SER
1	B	150	ASN
1	B	186	GLU
1	C	24	LYS
1	C	32	SER
1	C	53	VAL
1	C	71	HIS
1	C	104	MET
1	C	116	SER
1	C	152	PRO
1	C	166	SER
1	D	24	LYS
1	D	39	TYR
1	D	53	VAL
1	D	66	ARG
1	D	97	ARG
1	D	105	LEU
1	D	116	SER
1	D	121	VAL
1	D	125	SER
1	D	138	VAL
1	D	147	SER

Some sidechains can be flipped to improve hydrogen bonding and reduce clashes. All (7) such sidechains are listed below:

Mol	Chain	Res	Type
1	A	150	ASN
1	A	175	GLN

Continued on next page...

Continued from previous page...

Mol	Chain	Res	Type
1	B	30	GLN
1	B	64	GLN
1	B	71	HIS
1	C	221(A)	GLN
1	D	34	GLN

5.3.3 RNA [i](#)

There are no RNA molecules in this entry.

5.4 Non-standard residues in protein, DNA, RNA chains [i](#)

There are no non-standard protein/DNA/RNA residues in this entry.

5.5 Carbohydrates [i](#)

There are no carbohydrates in this entry.

5.6 Ligand geometry [i](#)

Of 15 ligands modelled in this entry, 1 is monoatomic - leaving 14 for Mogul analysis.

In the following table, the Counts columns list the number of bonds (or angles) for which Mogul statistics could be retrieved, the number of bonds (or angles) that are observed in the model and the number of bonds (or angles) that are defined in the Chemical Component Dictionary. The Link column lists molecule types, if any, to which the group is linked. The Z score for a bond length (or angle) is the number of standard deviations the observed value is removed from the expected value. A bond length (or angle) with $|Z| > 2$ is considered an outlier worth inspection. RMSZ is the root-mean-square of all Z scores of the bond lengths (or angles).

Mol	Type	Chain	Res	Link	Bond lengths			Bond angles		
					Counts	RMSZ	# Z > 2	Counts	RMSZ	# Z > 2
3	SO4	D	250	-	4,4,4	0.53	0	6,6,6	0.54	0
3	SO4	A	249	-	4,4,4	0.53	0	6,6,6	0.28	0
3	SO4	D	251	-	4,4,4	0.51	0	6,6,6	0.19	0
4	BEN	C	246	-	9,9,9	1.48	1 (11%)	7,11,11	1.00	1 (14%)
3	SO4	D	249	-	4,4,4	0.53	0	6,6,6	0.32	0
3	SO4	B	249	-	4,4,4	0.58	0	6,6,6	0.26	0
4	BEN	D	246	-	9,9,9	1.43	1 (11%)	7,11,11	0.97	1 (14%)
3	SO4	B	248	-	4,4,4	0.60	0	6,6,6	0.23	0

Mol	Type	Chain	Res	Link	Bond lengths			Bond angles		
					Counts	RMSZ	# Z > 2	Counts	RMSZ	# Z > 2
4	BEN	B	246	-	9,9,9	1.35	1 (11%)	7,11,11	1.11	1 (14%)
3	SO4	D	248	-	4,4,4	0.68	0	6,6,6	0.34	0
4	BEN	A	246	-	9,9,9	1.27	1 (11%)	7,11,11	1.42	1 (14%)
3	SO4	C	248	-	4,4,4	0.62	0	6,6,6	0.40	0
3	SO4	A	248	-	4,4,4	0.60	0	6,6,6	0.30	0
3	SO4	C	249	-	4,4,4	0.49	0	6,6,6	0.24	0

In the following table, the Chirals column lists the number of chiral outliers, the number of chiral centers analysed, the number of these observed in the model and the number defined in the Chemical Component Dictionary. Similar counts are reported in the Torsion and Rings columns. '-' means no outliers of that kind were identified.

Mol	Type	Chain	Res	Link	Chirals	Torsions	Rings
4	BEN	B	246	-	-	4/4/4/4	0/1/1/1
4	BEN	A	246	-	-	4/4/4/4	0/1/1/1
4	BEN	D	246	-	-	4/4/4/4	0/1/1/1
4	BEN	C	246	-	-	4/4/4/4	0/1/1/1

All (4) bond length outliers are listed below:

Mol	Chain	Res	Type	Atoms	Z	Observed(Å)	Ideal(Å)
4	C	246	BEN	C1-C	-3.77	1.40	1.47
4	D	246	BEN	C1-C	-3.61	1.40	1.47
4	A	246	BEN	C1-C	-3.56	1.40	1.47
4	B	246	BEN	C1-C	-3.23	1.41	1.47

All (4) bond angle outliers are listed below:

Mol	Chain	Res	Type	Atoms	Z	Observed(°)	Ideal(°)
4	A	246	BEN	C1-C-N2	3.36	123.12	118.05
4	C	246	BEN	C1-C-N2	2.50	121.82	118.05
4	B	246	BEN	C1-C-N2	2.50	121.82	118.05
4	D	246	BEN	C1-C-N2	2.38	121.63	118.05

There are no chirality outliers.

All (16) torsion outliers are listed below:

Mol	Chain	Res	Type	Atoms
4	C	246	BEN	N2-C-C1-C2
4	C	246	BEN	N2-C-C1-C6

Continued on next page...

Continued from previous page...

Mol	Chain	Res	Type	Atoms
4	A	246	BEN	N2-C-C1-C2
4	A	246	BEN	N2-C-C1-C6
4	D	246	BEN	N2-C-C1-C2
4	D	246	BEN	N2-C-C1-C6
4	B	246	BEN	N2-C-C1-C2
4	B	246	BEN	N2-C-C1-C6
4	C	246	BEN	N1-C-C1-C2
4	C	246	BEN	N1-C-C1-C6
4	A	246	BEN	N1-C-C1-C2
4	A	246	BEN	N1-C-C1-C6
4	D	246	BEN	N1-C-C1-C2
4	D	246	BEN	N1-C-C1-C6
4	B	246	BEN	N1-C-C1-C2
4	B	246	BEN	N1-C-C1-C6

There are no ring outliers.

2 monomers are involved in 1 short contact:

Mol	Chain	Res	Type	Clashes	Symm-Clashes
4	C	246	BEN	1	0
3	C	248	SO4	1	0

5.7 Other polymers [i](#)

There are no such residues in this entry.

5.8 Polymer linkage issues [i](#)

There are no chain breaks in this entry.

6 Fit of model and data [i](#)

6.1 Protein, DNA and RNA chains [i](#)

In the following table, the column labelled ‘#RSRZ > 2’ contains the number (and percentage) of RSRZ outliers, followed by percent RSRZ outliers for the chain as percentile scores relative to all X-ray entries and entries of similar resolution. The OWAB column contains the minimum, median, 95th percentile and maximum values of the occupancy-weighted average B-factor per residue. The column labelled ‘Q < 0.9’ lists the number of (and percentage) of residues with an average occupancy less than 0.9.

Mol	Chain	Analysed	<RSRZ>	#RSRZ>2	OWAB(Å ²)	Q<0.9
1	A	223/223 (100%)	-0.41	3 (1%) 77 81	7, 16, 32, 50	11 (4%)
1	B	222/223 (99%)	-0.25	4 (1%) 68 72	10, 19, 44, 62	16 (7%)
1	C	223/223 (100%)	-0.10	5 (2%) 62 66	10, 20, 47, 59	18 (8%)
1	D	222/223 (99%)	-0.24	2 (0%) 84 87	9, 19, 42, 76	16 (7%)
All	All	890/892 (99%)	-0.25	14 (1%) 72 76	7, 19, 44, 76	61 (6%)

All (14) RSRZ outliers are listed below:

Mol	Chain	Res	Type	RSRZ
1	D	76	ASN	6.7
1	A	38	GLY	3.6
1	C	39	TYR	3.5
1	C	75	VAL	3.1
1	B	150	ASN	3.0
1	C	38	GLY	2.9
1	A	37	SER	2.7
1	C	40	HIS	2.6
1	A	40	HIS	2.4
1	C	146	GLY	2.4
1	B	79	THR	2.3
1	B	217	TYR	2.3
1	B	78	GLY	2.1
1	D	114	LEU	2.0

6.2 Non-standard residues in protein, DNA, RNA chains [i](#)

There are no non-standard protein/DNA/RNA residues in this entry.

6.3 Carbohydrates [i](#)

There are no carbohydrates in this entry.

6.4 Ligands [i](#)

In the following table, the Atoms column lists the number of modelled atoms in the group and the number defined in the chemical component dictionary. The B-factors column lists the minimum, median, 95th percentile and maximum values of B factors of atoms in the group. The column labelled 'Q< 0.9' lists the number of atoms with occupancy less than 0.9.

Mol	Type	Chain	Res	Atoms	RSCC	RSR	B-factors(Å ²)	Q<0.9
2	CA	A	247	1/1	0.86	0.15	46,46,46,46	0
3	SO4	C	249	5/5	0.93	0.16	59,60,61,62	0
3	SO4	C	248	5/5	0.94	0.16	46,49,50,50	0
3	SO4	B	249	5/5	0.96	0.10	59,60,60,60	0
4	BEN	B	246	9/9	0.96	0.07	14,18,19,20	0
3	SO4	A	249	5/5	0.96	0.17	56,58,59,60	0
4	BEN	C	246	9/9	0.96	0.07	15,16,17,18	0
3	SO4	D	249	5/5	0.97	0.08	43,44,46,47	0
3	SO4	D	248	5/5	0.97	0.10	29,31,37,38	0
3	SO4	D	251	5/5	0.97	0.09	21,23,25,25	5
4	BEN	D	246	9/9	0.97	0.07	11,14,16,17	0
4	BEN	A	246	9/9	0.98	0.06	11,12,12,14	0
3	SO4	B	248	5/5	0.98	0.08	44,44,46,48	0
3	SO4	D	250	5/5	0.99	0.04	19,19,22,22	0
3	SO4	A	248	5/5	0.99	0.05	25,30,31,32	0

6.5 Other polymers [i](#)

There are no such residues in this entry.