



Full wwPDB X-ray Structure Validation Report ⓘ

May 23, 2020 – 06:18 am BST

PDB ID : 2A1H
Title : X-ray crystal structure of human mitochondrial branched chain aminotransferase (BCATm) complexed with gabapentin
Authors : Goto, M.; Miyahara, I.; Hirotsu, K.; Conway, M.; Yennawar, N.; Islam, M.M.; Hutson, S.M.
Deposited on : 2005-06-20
Resolution : 1.80 Å(reported)

This is a Full wwPDB X-ray Structure Validation Report for a publicly released PDB entry.

We welcome your comments at validation@mail.wwpdb.org

A user guide is available at

<https://www.wwpdb.org/validation/2017/XrayValidationReportHelp>

with specific help available everywhere you see the ⓘ symbol.

The following versions of software and data (see [references ⓘ](#)) were used in the production of this report:

MolProbity : 4.02b-467
Mogul : 1.8.5 (274361), CSD as541be (2020)
Xtriage (Phenix) : 1.13
EDS : 2.11
Percentile statistics : 20191225.v01 (using entries in the PDB archive December 25th 2019)
Refmac : 5.8.0158
CCP4 : 7.0.044 (Gargrove)
Ideal geometry (proteins) : Engh & Huber (2001)
Ideal geometry (DNA, RNA) : Parkinson et al. (1996)
Validation Pipeline (wwPDB-VP) : 2.11

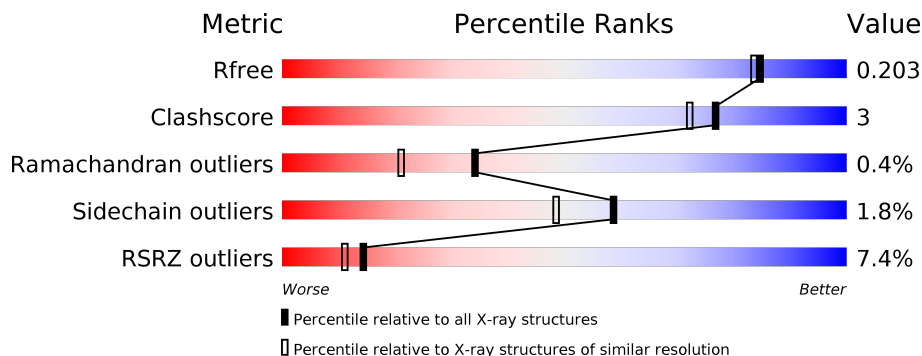
1 Overall quality at a glance

The following experimental techniques were used to determine the structure:

X-RAY DIFFRACTION

The reported resolution of this entry is 1.80 Å.

Percentile scores (ranging between 0-100) for global validation metrics of the entry are shown in the following graphic. The table shows the number of entries on which the scores are based.



Metric	Whole archive (#Entries)	Similar resolution (#Entries, resolution range(Å))
R_{free}	130704	5950 (1.80-1.80)
Clashscore	141614	6793 (1.80-1.80)
Ramachandran outliers	138981	6697 (1.80-1.80)
Sidechain outliers	138945	6696 (1.80-1.80)
RSRZ outliers	127900	5850 (1.80-1.80)

The table below summarises the geometric issues observed across the polymeric chains and their fit to the electron density. The red, orange, yellow and green segments on the lower bar indicate the fraction of residues that contain outliers for ≥ 3 , 2, 1 and 0 types of geometric quality criteria respectively. A grey segment represents the fraction of residues that are not modelled. The numeric value for each fraction is indicated below the corresponding segment, with a dot representing fractions $\leq 5\%$. The upper red bar (where present) indicates the fraction of residues that have poor fit to the electron density. The numeric value is given above the bar.

Mol	Chain	Length	Quality of chain
1	A	365	 9% 92% 7% ..
1	B	365	 6% 93% 6% ..

2 Entry composition [i](#)

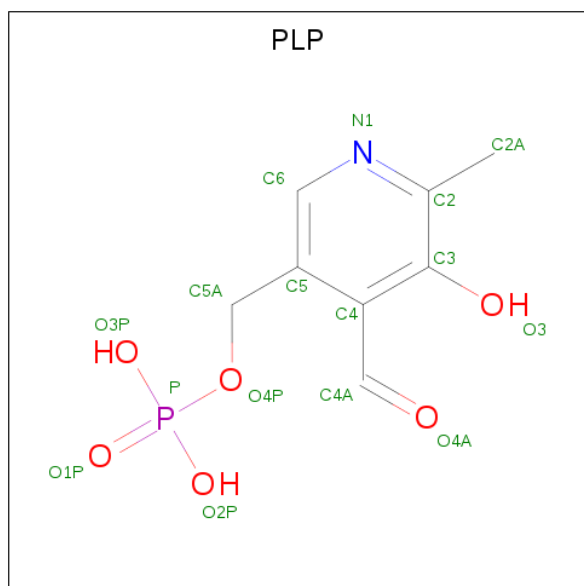
There are 5 unique types of molecules in this entry. The entry contains 6235 atoms, of which 0 are hydrogens and 0 are deuteriums.

In the tables below, the ZeroOcc column contains the number of atoms modelled with zero occupancy, the AltConf column contains the number of residues with at least one atom in alternate conformation and the Trace column contains the number of residues modelled with at most 2 atoms.

- Molecule 1 is a protein called branched chain aminotransferase.

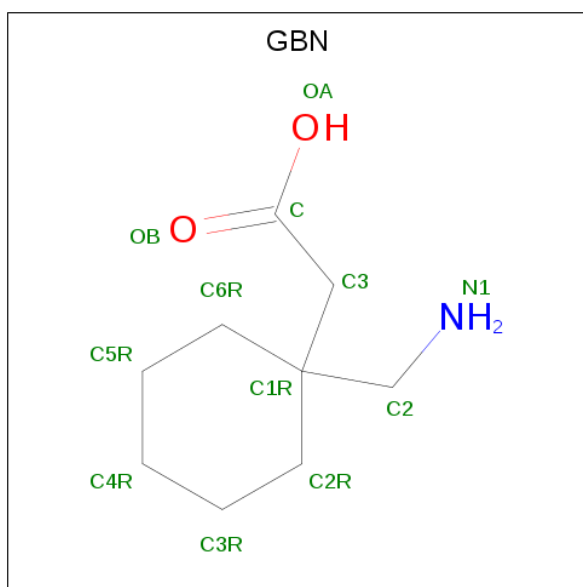
Mol	Chain	Residues	Atoms					ZeroOcc	AltConf	Trace
			Total	C	N	O	S			
1	A	363	Total 2927	C 1884	N 510	O 513	S 20	0	4	0
1	B	363	Total 2909	C 1874	N 506	O 509	S 20	0	2	0

- Molecule 2 is PYRIDOXAL-5'-PHOSPHATE (three-letter code: PLP) (formula: C₈H₁₀NO₆P).



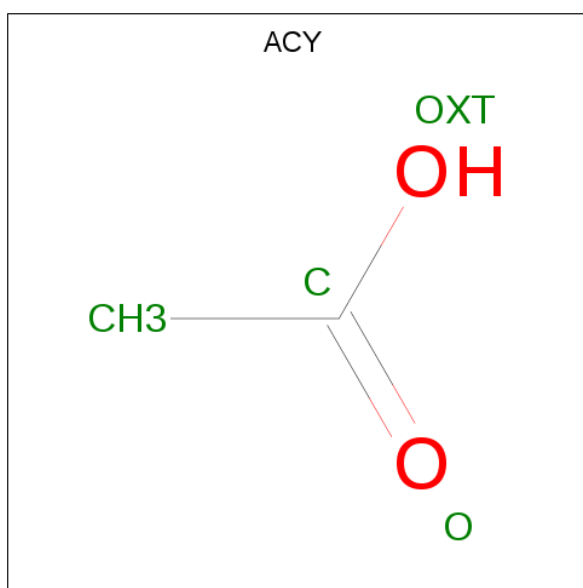
Mol	Chain	Residues	Atoms					ZeroOcc	AltConf
			Total	C	N	O	P		
2	A	1	Total 15	C 8	N 1	O 5	P 1	0	0
2	B	1	Total 15	C 8	N 1	O 5	P 1	0	0

- Molecule 3 is [1-(AMINOMETHYL)CYCLOHEXYL]ACETIC ACID (three-letter code: GBN) (formula: C₉H₁₇NO₂).



Mol	Chain	Residues	Atoms			ZeroOcc	AltConf	
			Total	C	N			O
3	A	1	12	9	1	2	0	0
3	B	1	12	9	1	2	0	0

- Molecule 4 is ACETIC ACID (three-letter code: ACY) (formula: C₂H₄O₂).



Mol	Chain	Residues	Atoms		ZeroOcc	AltConf
			Total	C O		
4	B	1	4	2 2	0	0

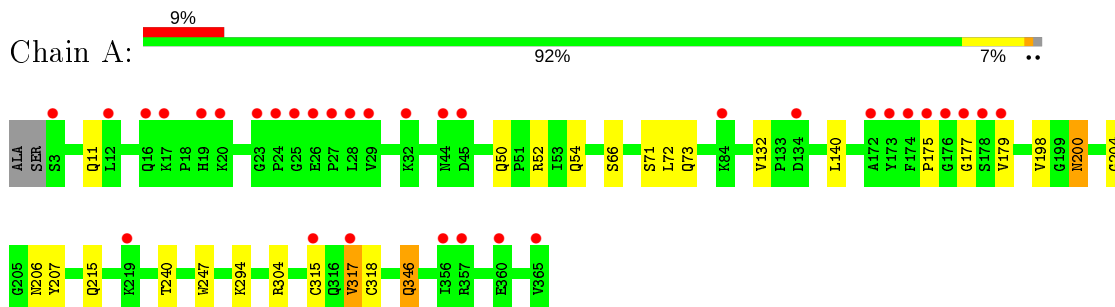
- Molecule 5 is water.

Mol	Chain	Residues	Atoms		ZeroOcc	AltConf
5	A	152	Total 152	O 152	0	0
5	B	189	Total 189	O 189	0	0

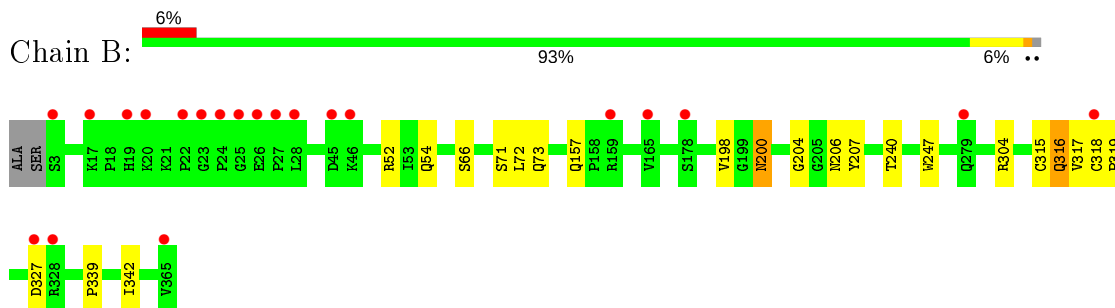
3 Residue-property plots

These plots are drawn for all protein, RNA and DNA chains in the entry. The first graphic for a chain summarises the proportions of the various outlier classes displayed in the second graphic. The second graphic shows the sequence view annotated by issues in geometry and electron density. Residues are color-coded according to the number of geometric quality criteria for which they contain at least one outlier: green = 0, yellow = 1, orange = 2 and red = 3 or more. A red dot above a residue indicates a poor fit to the electron density ($RSRZ > 2$). Stretches of 2 or more consecutive residues without any outlier are shown as a green connector. Residues present in the sample, but not in the model, are shown in grey.

- Molecule 1: branched chain aminotransferase



- Molecule 1: branched chain aminotransferase



4 Data and refinement statistics

Property	Value	Source
Space group	P 1 21 1	Depositor
Cell constants a, b, c, α , β , γ	58.82Å 109.37Å 59.25Å 90.00° 96.73° 90.00°	Depositor
Resolution (Å)	25.00 – 1.80 29.42 – 1.80	Depositor EDS
% Data completeness (in resolution range)	99.1 (25.00-1.80) 99.3 (29.42-1.80)	Depositor EDS
R_{merge}	0.06	Depositor
R_{sym}	(Not available)	Depositor
$\langle I/\sigma(I) \rangle$ ¹	3.63 (at 1.80Å)	Xtrriage
Refinement program	CNS	Depositor
R, R_{free}	0.208 , 0.232 0.204 , 0.203	Depositor DCC
R_{free} test set	3501 reflections (5.08%)	wwPDB-VP
Wilson B-factor (Å ²)	22.4	Xtrriage
Anisotropy	0.098	Xtrriage
Bulk solvent k_{sol} (e/Å ³), B_{sol} (Å ²)	0.39 , 43.3	EDS
L-test for twinning ²	$\langle L \rangle = 0.49$, $\langle L^2 \rangle = 0.33$	Xtrriage
Estimated twinning fraction	0.019 for l,-k,h	Xtrriage
F_o, F_c correlation	0.95	EDS
Total number of atoms	6235	wwPDB-VP
Average B, all atoms (Å ²)	24.0	wwPDB-VP

Xtrriage's analysis on translational NCS is as follows: *The largest off-origin peak in the Patterson function is 5.30% of the height of the origin peak. No significant pseudotranslation is detected.*

¹ Intensities estimated from amplitudes.

² Theoretical values of $\langle |L| \rangle$, $\langle L^2 \rangle$ for acentric reflections are 0.5, 0.333 respectively for untwinned datasets, and 0.375, 0.2 for perfectly twinned datasets.

5 Model quality [i](#)

5.1 Standard geometry [i](#)

Bond lengths and bond angles in the following residue types are not validated in this section: GBN, ACY, PLP

The Z score for a bond length (or angle) is the number of standard deviations the observed value is removed from the expected value. A bond length (or angle) with $|Z| > 5$ is considered an outlier worth inspection. RMSZ is the root-mean-square of all Z scores of the bond lengths (or angles).

Mol	Chain	Bond lengths		Bond angles	
		RMSZ	# Z >5	RMSZ	# Z >5
1	A	0.62	0/3004	0.73	0/4077
1	B	0.62	0/2986	0.72	0/4052
All	All	0.62	0/5990	0.72	0/8129

Chiral center outliers are detected by calculating the chiral volume of a chiral center and verifying if the center is modelled as a planar moiety or with the opposite hand. A planarity outlier is detected by checking planarity of atoms in a peptide group, atoms in a mainchain group or atoms of a sidechain that are expected to be planar.

Mol	Chain	#Chirality outliers	#Planarity outliers
1	A	0	1
1	B	0	1
All	All	0	2

There are no bond length outliers.

There are no bond angle outliers.

There are no chirality outliers.

All (2) planarity outliers are listed below:

Mol	Chain	Res	Type	Group
1	A	207	TYR	Sidechain
1	B	207	TYR	Sidechain

5.2 Too-close contacts [i](#)

In the following table, the Non-H and H(model) columns list the number of non-hydrogen atoms and hydrogen atoms in the chain respectively. The H(added) column lists the number of hydrogen atoms added and optimized by MolProbity. The Clashes column lists the number of clashes within the asymmetric unit, whereas Symm-Clashes lists symmetry related clashes.

Mol	Chain	Non-H	H(model)	H(added)	Clashes	Symm-Clashes
1	A	2927	0	2941	20	0
1	B	2909	0	2925	18	0
2	A	15	0	6	1	0
2	B	15	0	6	1	0
3	A	12	0	16	3	0
3	B	12	0	16	2	0
4	B	4	0	3	0	0
5	A	152	0	0	1	0
5	B	189	0	0	1	0
All	All	6235	0	5913	35	0

The all-atom clashscore is defined as the number of clashes found per 1000 atoms (including hydrogen atoms). The all-atom clashscore for this structure is 3.

All (35) close contacts within the same asymmetric unit are listed below, sorted by their clash magnitude.

Atom-1	Atom-2	Interatomic distance (Å)	Clash overlap (Å)
1:B:200:ASN:HD22	1:B:200:ASN:H	1.14	0.92
1:A:200:ASN:HD22	1:A:200:ASN:H	1.20	0.87
1:B:52:ARG:HE	1:B:54:GLN:NE2	1.93	0.67
1:A:215:GLN:HE22	1:B:157:GLN:NE2	1.96	0.64
1:A:52:ARG:HE	1:A:54:GLN:NE2	1.98	0.62
1:A:73:GLN:HE22	1:B:71:SER:H	1.46	0.61
1:B:200:ASN:HD22	1:B:200:ASN:N	1.93	0.61
1:B:315[B]:CYS:SG	1:B:318:CYS:HB2	2.43	0.59
1:B:200:ASN:ND2	1:B:200:ASN:H	1.93	0.58
1:B:73:GLN:HE21	1:B:204:GLY:HA3	1.67	0.58
1:A:71:SER:H	1:B:73:GLN:HE22	1.50	0.57
1:A:200:ASN:ND2	1:A:200:ASN:H	1.99	0.55
1:A:198:VAL:HG23	1:A:206:ASN:HD21	1.74	0.52
1:A:240:THR:OG1	3:A:502:GBN:N1	2.43	0.52
1:A:73:GLN:HE21	1:A:204:GLY:HA3	1.76	0.51
1:A:132:VAL:HG22	1:A:140:LEU:HD22	1.94	0.50
1:B:240:THR:OG1	3:B:501:GBN:N1	2.44	0.49
1:A:66:SER:HB2	1:A:72:LEU:HD12	1.94	0.49
1:B:66:SER:HB2	1:B:72:LEU:HD12	1.96	0.47
1:B:339:PRO:HB2	1:B:342:ILE:HB	1.97	0.47
1:B:198:VAL:HG23	1:B:206:ASN:HD21	1.80	0.46
1:A:315[A]:CYS:SG	1:A:318:CYS:HB2	2.55	0.46
1:A:304:ARG:NH2	5:A:605:HOH:O	2.49	0.45
2:A:400:PLP:C4A	3:A:502:GBN:H31	2.47	0.45
1:A:11:GLN:HE21	1:A:50[B]:GLN:NE2	2.14	0.45

Continued on next page...

Continued from previous page...

Atom-1	Atom-2	Interatomic distance (Å)	Clash overlap (Å)
1:A:200:ASN:N	1:A:200:ASN:HD22	1.99	0.45
1:A:73:GLN:NE2	1:B:71:SER:H	2.14	0.45
1:B:304:ARG:NH2	5:B:1063:HOH:O	2.50	0.44
1:A:240:THR:HB	3:A:502:GBN:H2R1	2.00	0.44
1:B:52:ARG:HE	1:B:54:GLN:HE22	1.66	0.44
1:A:317:VAL:HG23	1:A:346:GLN:HE21	1.84	0.42
1:A:52:ARG:HE	1:A:54:GLN:HE22	1.68	0.41
1:A:71:SER:H	1:B:73:GLN:NE2	2.18	0.41
1:B:318:CYS:HA	1:B:319:PRO:HD3	1.96	0.41
2:B:400:PLP:C4A	3:B:501:GBN:H31	2.51	0.40

There are no symmetry-related clashes.

5.3 Torsion angles [i](#)

5.3.1 Protein backbone [i](#)

In the following table, the Percentiles column shows the percent Ramachandran outliers of the chain as a percentile score with respect to all X-ray entries followed by that with respect to entries of similar resolution.

The Analysed column shows the number of residues for which the backbone conformation was analysed, and the total number of residues.

Mol	Chain	Analysed	Favoured	Allowed	Outliers	Percentiles	
1	A	365/365 (100%)	351 (96%)	12 (3%)	2 (0%)	29	15
1	B	363/365 (100%)	354 (98%)	8 (2%)	1 (0%)	41	27
All	All	728/730 (100%)	705 (97%)	20 (3%)	3 (0%)	34	21

All (3) Ramachandran outliers are listed below:

Mol	Chain	Res	Type
1	B	316	GLN
1	A	177	GLY
1	A	175	PRO

5.3.2 Protein sidechains [i](#)

In the following table, the Percentiles column shows the percent sidechain outliers of the chain as a percentile score with respect to all X-ray entries followed by that with respect to entries of similar resolution.

The Analysed column shows the number of residues for which the sidechain conformation was analysed, and the total number of residues.

Mol	Chain	Analysed	Rotameric	Outliers	Percentiles	
1	A	318/316 (101%)	312 (98%)	6 (2%)	57	46
1	B	316/316 (100%)	311 (98%)	5 (2%)	62	54
All	All	634/632 (100%)	623 (98%)	11 (2%)	59	51

All (11) residues with a non-rotameric sidechain are listed below:

Mol	Chain	Res	Type
1	A	179	VAL
1	A	200	ASN
1	A	247	TRP
1	A	294	LYS
1	A	317	VAL
1	A	346	GLN
1	B	200	ASN
1	B	247	TRP
1	B	316	GLN
1	B	317	VAL
1	B	327	ASP

Some sidechains can be flipped to improve hydrogen bonding and reduce clashes. All (22) such sidechains are listed below:

Mol	Chain	Res	Type
1	A	54	GLN
1	A	73	GLN
1	A	87	GLN
1	A	96	ASN
1	A	157	GLN
1	A	200	ASN
1	A	206	ASN
1	A	224	GLN
1	A	242	ASN
1	A	249	HIS
1	A	295	GLN

Continued on next page...

Continued from previous page...

Mol	Chain	Res	Type
1	A	346	GLN
1	B	54	GLN
1	B	73	GLN
1	B	86	GLN
1	B	157	GLN
1	B	200	ASN
1	B	206	ASN
1	B	224	GLN
1	B	242	ASN
1	B	279	GLN
1	B	346	GLN

5.3.3 RNA [i](#)

There are no RNA molecules in this entry.

5.4 Non-standard residues in protein, DNA, RNA chains [i](#)

There are no non-standard protein/DNA/RNA residues in this entry.

5.5 Carbohydrates [i](#)

There are no carbohydrates in this entry.

5.6 Ligand geometry [i](#)

5 ligands are modelled in this entry.

In the following table, the Counts columns list the number of bonds (or angles) for which Mogul statistics could be retrieved, the number of bonds (or angles) that are observed in the model and the number of bonds (or angles) that are defined in the Chemical Component Dictionary. The Link column lists molecule types, if any, to which the group is linked. The Z score for a bond length (or angle) is the number of standard deviations the observed value is removed from the expected value. A bond length (or angle) with $|Z| > 2$ is considered an outlier worth inspection. RMSZ is the root-mean-square of all Z scores of the bond lengths (or angles).

Mol	Type	Chain	Res	Link	Bond lengths			Bond angles		
					Counts	RMSZ	$\# Z > 2$	Counts	RMSZ	$\# Z > 2$
3	GBN	B	501	-	8,12,12	0.67	0	10,16,16	0.64	0
3	GBN	A	502	-	8,12,12	0.64	0	10,16,16	0.68	0
4	ACY	B	1001	-	1,3,3	2.82	1 (100%)	0,3,3	0.00	-

Mol	Type	Chain	Res	Link	Bond lengths			Bond angles		
					Counts	RMSZ	# Z > 2	Counts	RMSZ	# Z > 2
2	PLP	A	400	1	15,15,16	1.49	2 (13%)	20,22,23	1.73	6 (30%)
2	PLP	B	400	1	15,15,16	1.51	2 (13%)	20,22,23	1.66	7 (35%)

In the following table, the Chirals column lists the number of chiral outliers, the number of chiral centers analysed, the number of these observed in the model and the number defined in the Chemical Component Dictionary. Similar counts are reported in the Torsion and Rings columns. '-' means no outliers of that kind were identified.

Mol	Type	Chain	Res	Link	Chirals	Torsions	Rings
3	GBN	B	501	-	-	0/6/18/18	0/1/1/1
3	GBN	A	502	-	-	0/6/18/18	0/1/1/1
2	PLP	A	400	1	-	0/6/6/8	0/1/1/1
2	PLP	B	400	1	-	0/6/6/8	0/1/1/1

All (5) bond length outliers are listed below:

Mol	Chain	Res	Type	Atoms	Z	Observed(Å)	Ideal(Å)
4	B	1001	ACY	CH3-C	2.82	1.52	1.48
2	B	400	PLP	C4A-C4	2.76	1.57	1.51
2	A	400	PLP	C4A-C4	2.72	1.57	1.51
2	A	400	PLP	P-O1P	-2.26	1.43	1.50
2	B	400	PLP	P-O1P	-2.06	1.43	1.50

All (13) bond angle outliers are listed below:

Mol	Chain	Res	Type	Atoms	Z	Observed(°)	Ideal(°)
2	A	400	PLP	O4P-C5A-C5	3.60	116.21	109.35
2	B	400	PLP	O4P-C5A-C5	3.15	115.36	109.35
2	A	400	PLP	O2P-P-O4P	-2.64	99.72	106.73
2	A	400	PLP	O3P-P-O1P	2.55	120.68	110.68
2	B	400	PLP	O3P-P-O1P	2.54	120.63	110.68
2	B	400	PLP	O2P-P-O4P	-2.49	100.09	106.73
2	A	400	PLP	C5A-C5-C6	-2.44	115.36	119.37
2	B	400	PLP	C6-C5-C4	2.22	119.90	118.16
2	B	400	PLP	C5A-C5-C6	-2.19	115.77	119.37
2	A	400	PLP	C4A-C4-C5	2.14	123.14	120.94
2	B	400	PLP	C4A-C4-C5	2.08	123.08	120.94
2	B	400	PLP	O4P-P-O1P	2.06	112.26	106.47
2	A	400	PLP	C6-C5-C4	2.05	119.77	118.16

There are no chirality outliers.

There are no torsion outliers.

There are no ring outliers.

4 monomers are involved in 5 short contacts:

Mol	Chain	Res	Type	Clashes	Symm-Clashes
3	B	501	GBN	2	0
3	A	502	GBN	3	0
2	A	400	PLP	1	0
2	B	400	PLP	1	0

5.7 Other polymers [i](#)

There are no such residues in this entry.

5.8 Polymer linkage issues [i](#)

There are no chain breaks in this entry.

6 Fit of model and data [i](#)

6.1 Protein, DNA and RNA chains [i](#)

In the following table, the column labelled '#RSRZ > 2' contains the number (and percentage) of RSRZ outliers, followed by percent RSRZ outliers for the chain as percentile scores relative to all X-ray entries and entries of similar resolution. The OWAB column contains the minimum, median, 95th percentile and maximum values of the occupancy-weighted average B-factor per residue. The column labelled 'Q < 0.9' lists the number of (and percentage) of residues with an average occupancy less than 0.9.

Mol	Chain	Analysed	<RSRZ>	#RSRZ>2	OWAB(Å ²)	Q<0.9
1	A	363/365 (99%)	0.37	33 (9%) 9 7	13, 22, 42, 50	0
1	B	363/365 (99%)	0.30	21 (5%) 23 18	14, 22, 36, 51	0
All	All	726/730 (99%)	0.34	54 (7%) 14 11	13, 22, 40, 51	0

All (54) RSRZ outliers are listed below:

Mol	Chain	Res	Type	RSRZ
1	B	24	PRO	7.9
1	A	175	PRO	7.7
1	B	23	GLY	7.3
1	A	176	GLY	6.6
1	A	27	PRO	6.6
1	B	25	GLY	6.1
1	B	27	PRO	5.8
1	A	177	GLY	5.8
1	A	178	SER	5.6
1	B	26	GLU	5.3
1	B	46	LYS	4.7
1	A	28	LEU	4.7
1	A	29	VAL	4.5
1	A	172	ALA	4.4
1	A	16	GLN	4.4
1	B	45	ASP	4.3
1	A	24	PRO	4.2
1	B	3	SER	4.1
1	B	28	LEU	3.9
1	A	25	GLY	3.9
1	A	17	LYS	3.8
1	B	19	HIS	3.7
1	A	19	HIS	3.6
1	A	23	GLY	3.6

Continued on next page...

Continued from previous page...

Mol	Chain	Res	Type	RSRZ
1	A	45	ASP	3.6
1	A	356	ILE	3.5
1	A	20	LYS	3.3
1	B	318	CYS	3.1
1	A	26	GLU	3.0
1	A	174	PHE	2.9
1	B	17	LYS	2.9
1	A	84	LYS	2.8
1	A	3	SER	2.8
1	B	327	ASP	2.6
1	A	315[A]	CYS	2.5
1	A	12	LEU	2.5
1	A	357	ARG	2.4
1	B	159	ARG	2.4
1	A	365	VAL	2.4
1	A	44	ASN	2.3
1	A	173	TYR	2.3
1	B	328	ARG	2.3
1	B	279	GLN	2.2
1	A	317	VAL	2.2
1	A	219	LYS	2.2
1	B	178	SER	2.1
1	B	165	VAL	2.1
1	B	365	VAL	2.1
1	A	32	LYS	2.1
1	A	134	ASP	2.0
1	A	179	VAL	2.0
1	B	20	LYS	2.0
1	B	22	PRO	2.0
1	A	360	GLU	2.0

6.2 Non-standard residues in protein, DNA, RNA chains [i](#)

There are no non-standard protein/DNA/RNA residues in this entry.

6.3 Carbohydrates [i](#)

There are no carbohydrates in this entry.

6.4 Ligands [i](#)

In the following table, the Atoms column lists the number of modelled atoms in the group and the number defined in the chemical component dictionary. The B-factors column lists the minimum, median, 95th percentile and maximum values of B factors of atoms in the group. The column labelled 'Q< 0.9' lists the number of atoms with occupancy less than 0.9.

Mol	Type	Chain	Res	Atoms	RSCC	RSR	B-factors(\AA^2)	Q<0.9
3	GBN	A	502	12/12	0.65	0.23	29,32,33,34	0
4	ACY	B	1001	4/4	0.78	0.15	36,38,38,39	0
3	GBN	B	501	12/12	0.86	0.17	25,30,30,31	0
2	PLP	A	400	15/16	0.96	0.12	17,19,24,25	0
2	PLP	B	400	15/16	0.97	0.11	15,18,23,23	0

6.5 Other polymers [i](#)

There are no such residues in this entry.