



Full wwPDB X-ray Structure Validation Report ⓘ

May 21, 2020 – 10:45 am BST

PDB ID : 4A2J
Title : PR X-Ray structures in agonist conformations reveal two different mechanisms for partial agonism in 11beta-substituted steroids
Authors : Lusher, S.J.; Raaijmakers, H.C.A.; Bosch, R.; Vu-Pham, D.; McGuire, R.; Oubrie, A.; de Vlieg, J.
Deposited on : 2011-09-27
Resolution : 2.00 Å(reported)

This is a Full wwPDB X-ray Structure Validation Report for a publicly released PDB entry.

We welcome your comments at validation@mail.wwpdb.org

A user guide is available at

<https://www.wwpdb.org/validation/2017/XrayValidationReportHelp>

with specific help available everywhere you see the ⓘ symbol.

The following versions of software and data (see [references ⓘ](#)) were used in the production of this report:

MolProbity : 4.02b-467
Mogul : 1.8.5 (274361), CSD as541be (2020)
Xtriage (Phenix) : 1.13
EDS : 2.11
buster-report : 1.1.7 (2018)
Percentile statistics : 20191225.v01 (using entries in the PDB archive December 25th 2019)
Refmac : 5.8.0158
CCP4 : 7.0.044 (Gargrove)
Ideal geometry (proteins) : Engh & Huber (2001)
Ideal geometry (DNA, RNA) : Parkinson et al. (1996)
Validation Pipeline (wwPDB-VP) : 2.11

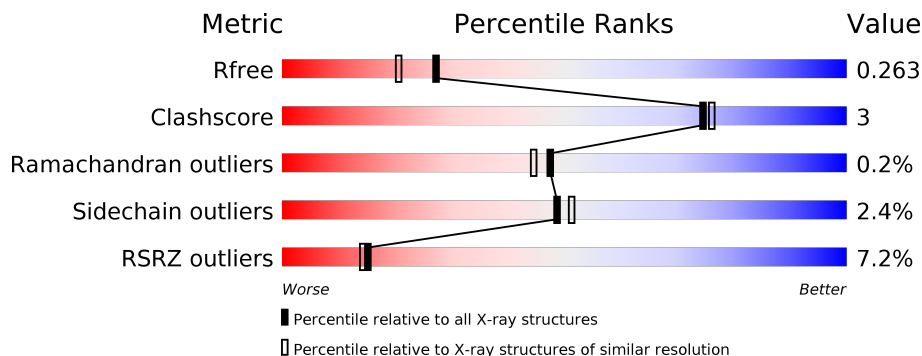
1 Overall quality at a glance i

The following experimental techniques were used to determine the structure:

X-RAY DIFFRACTION

The reported resolution of this entry is 2.00 Å.

Percentile scores (ranging between 0-100) for global validation metrics of the entry are shown in the following graphic. The table shows the number of entries on which the scores are based.



Metric	Whole archive (#Entries)	Similar resolution (#Entries, resolution range(Å))
R_{free}	130704	8085 (2.00-2.00)
Clashscore	141614	9178 (2.00-2.00)
Ramachandran outliers	138981	9054 (2.00-2.00)
Sidechain outliers	138945	9053 (2.00-2.00)
RSRZ outliers	127900	7900 (2.00-2.00)

The table below summarises the geometric issues observed across the polymeric chains and their fit to the electron density. The red, orange, yellow and green segments on the lower bar indicate the fraction of residues that contain outliers for ≥ 3 , 2, 1 and 0 types of geometric quality criteria respectively. A grey segment represents the fraction of residues that are not modelled. The numeric value for each fraction is indicated below the corresponding segment, with a dot representing fractions $\leq 5\%$. The upper red bar (where present) indicates the fraction of residues that have poor fit to the electron density. The numeric value is given above the bar.

Mol	Chain	Length	Quality of chain
1	A	260	 6% 88% 8% •
1	B	260	 8% 88% 8% •

2 Entry composition

There are 4 unique types of molecules in this entry. The entry contains 4217 atoms, of which 0 are hydrogens and 0 are deuteriums.

In the tables below, the ZeroOcc column contains the number of atoms modelled with zero occupancy, the AltConf column contains the number of residues with at least one atom in alternate conformation and the Trace column contains the number of residues modelled with at most 2 atoms.

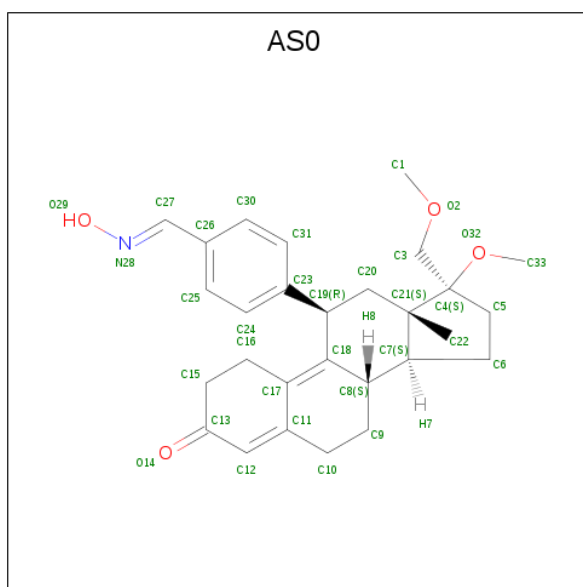
- Molecule 1 is a protein called PROGESTERONE RECEPTOR.

Mol	Chain	Residues	Atoms					ZeroOcc	AltConf	Trace
			Total	C	N	O	S			
1	A	250	2029	1317	335	363	14	0	2	0
1	B	250	2039	1323	338	363	15	0	4	0

There are 8 discrepancies between the modelled and reference sequences:

Chain	Residue	Modelled	Actual	Comment	Reference
A	674	GLY	-	expression tag	UNP P06401
A	675	SER	-	expression tag	UNP P06401
A	676	HIS	-	expression tag	UNP P06401
A	677	MET	-	expression tag	UNP P06401
B	674	GLY	-	expression tag	UNP P06401
B	675	SER	-	expression tag	UNP P06401
B	676	HIS	-	expression tag	UNP P06401
B	677	MET	-	expression tag	UNP P06401

- Molecule 2 is 4-[(11BETA,17BETA)-17-METHOXY-17-(METHOXYMETHYL)-3-OXO ESTRA-4,9-DIEN-11-YL]BENZALDEHYDE OXIME (three-letter code: AS0) (formula: C₂₈H₃₅NO₄).



Mol	Chain	Residues	Atoms			ZeroOcc	AltConf	
2	A	1	Total	C	N	O	0	0
			33	28	1	4		
2	B	1	Total	C	N	O	0	0
			33	28	1	4		

- Molecule 3 is SULFATE ION (three-letter code: SO4) (formula: O₄S).



Mol	Chain	Residues	Atoms		ZeroOcc	AltConf	
3	A	1	Total	O	S	0	0
			5	4	1		

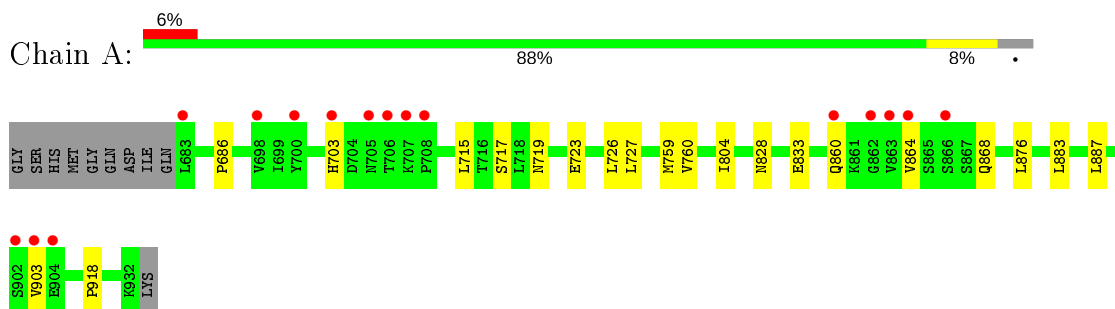
- Molecule 4 is water.

Mol	Chain	Residues	Atoms		ZeroOcc	AltConf
4	A	36	Total 36	O 36	0	0
4	B	42	Total 42	O 42	0	0

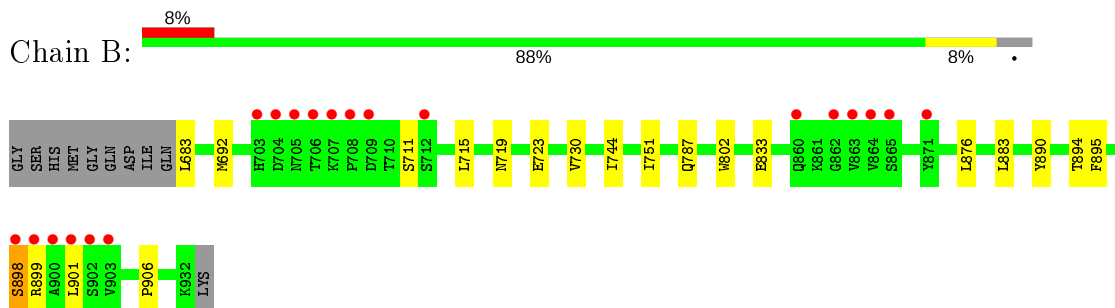
3 Residue-property plots [i](#)

These plots are drawn for all protein, RNA and DNA chains in the entry. The first graphic for a chain summarises the proportions of the various outlier classes displayed in the second graphic. The second graphic shows the sequence view annotated by issues in geometry and electron density. Residues are color-coded according to the number of geometric quality criteria for which they contain at least one outlier: green = 0, yellow = 1, orange = 2 and red = 3 or more. A red dot above a residue indicates a poor fit to the electron density ($RSRZ > 2$). Stretches of 2 or more consecutive residues without any outlier are shown as a green connector. Residues present in the sample, but not in the model, are shown in grey.

- Molecule 1: PROGESTERONE RECEPTOR



- Molecule 1: PROGESTERONE RECEPTOR



4 Data and refinement statistics

Property	Value	Source
Space group	P 1 21 1	Depositor
Cell constants a, b, c, α , β , γ	58.61Å 64.70Å 69.99Å 90.00° 95.71° 90.00°	Depositor
Resolution (Å)	42.68 – 2.00 38.07 – 2.00	Depositor EDS
% Data completeness (in resolution range)	99.8 (42.68-2.00) 99.8 (38.07-2.00)	Depositor EDS
R_{merge}	0.10	Depositor
R_{sym}	(Not available)	Depositor
$\langle I/\sigma(I) \rangle$ ¹	1.52 (at 2.00Å)	Xtrriage
Refinement program	REFMAC 5.4.0078	Depositor
R, R_{free}	0.204 , 0.251 0.214 , 0.263	Depositor DCC
R_{free} test set	1821 reflections (5.16%)	wwPDB-VP
Wilson B-factor (Å ²)	31.4	Xtrriage
Anisotropy	0.175	Xtrriage
Bulk solvent k_{sol} (e/Å ³), B_{sol} (Å ²)	0.38 , 54.7	EDS
L-test for twinning ²	$\langle L \rangle = 0.50$, $\langle L^2 \rangle = 0.33$	Xtrriage
Estimated twinning fraction	No twinning to report.	Xtrriage
F_o, F_c correlation	0.95	EDS
Total number of atoms	4217	wwPDB-VP
Average B, all atoms (Å ²)	37.0	wwPDB-VP

Xtrriage's analysis on translational NCS is as follows: *The largest off-origin peak in the Patterson function is 7.12% of the height of the origin peak. No significant pseudotranslation is detected.*

¹ Intensities estimated from amplitudes.

² Theoretical values of $\langle |L| \rangle$, $\langle L^2 \rangle$ for acentric reflections are 0.5, 0.333 respectively for untwinned datasets, and 0.375, 0.2 for perfectly twinned datasets.

5 Model quality

5.1 Standard geometry

Bond lengths and bond angles in the following residue types are not validated in this section: AS0, SO4

The Z score for a bond length (or angle) is the number of standard deviations the observed value is removed from the expected value. A bond length (or angle) with $|Z| > 5$ is considered an outlier worth inspection. RMSZ is the root-mean-square of all Z scores of the bond lengths (or angles).

Mol	Chain	Bond lengths		Bond angles	
		RMSZ	# Z >5	RMSZ	# Z >5
1	A	0.50	0/2079	0.58	0/2812
1	B	0.53	0/2098	0.60	0/2836
All	All	0.52	0/4177	0.59	0/5648

There are no bond length outliers.

There are no bond angle outliers.

There are no chirality outliers.

There are no planarity outliers.

5.2 Too-close contacts

In the following table, the Non-H and H(model) columns list the number of non-hydrogen atoms and hydrogen atoms in the chain respectively. The H(added) column lists the number of hydrogen atoms added and optimized by MolProbity. The Clashes column lists the number of clashes within the asymmetric unit, whereas Symm-Clashes lists symmetry related clashes.

Mol	Chain	Non-H	H(model)	H(added)	Clashes	Symm-Clashes
1	A	2029	0	2092	12	0
1	B	2039	0	2106	13	0
2	A	33	0	35	1	0
2	B	33	0	35	8	0
3	A	5	0	0	0	0
4	A	36	0	0	1	0
4	B	42	0	0	0	0
All	All	4217	0	4268	27	0

The all-atom clashscore is defined as the number of clashes found per 1000 atoms (including hydrogen atoms). The all-atom clashscore for this structure is 3.

All (27) close contacts within the same asymmetric unit are listed below, sorted by their clash magnitude.

Atom-1	Atom-2	Interatomic distance (Å)	Clash overlap (Å)
1:B:715:LEU:CD2	2:B:1000:AS0:H13	2.04	0.88
1:A:804:ILE:HD11	1:A:883:LEU:HD13	1.65	0.79
1:A:864:VAL:HG12	1:A:868:GLN:NE2	2.00	0.77
1:B:715:LEU:HD22	2:B:1000:AS0:H13	1.66	0.77
1:A:726:LEU:HB2	1:A:759:MET:HE1	1.79	0.65
1:A:864:VAL:HG12	1:A:868:GLN:HE22	1.63	0.63
1:B:883:LEU:C	1:B:883:LEU:HD23	2.22	0.60
1:B:890:TYR:CE1	2:B:1000:AS0:H12A	2.44	0.52
1:B:894:THR:HG23	1:B:901:LEU:HD13	1.92	0.51
1:A:703:HIS:HD2	1:A:717:SER:OG	1.94	0.51
1:B:895:PHE:O	1:B:898:SER:HB2	2.10	0.51
1:B:890:TYR:HE1	2:B:1000:AS0:H12A	1.77	0.49
1:A:876:LEU:C	1:A:876:LEU:HD23	2.34	0.48
1:A:760:VAL:HG21	1:A:887:LEU:HD11	1.96	0.47
1:B:876:LEU:HD23	1:B:876:LEU:C	2.35	0.47
1:A:719:ASN:HA	2:A:1000:AS0:H31	1.97	0.47
1:B:719:ASN:HA	2:B:1000:AS0:H31	1.98	0.45
1:B:730:VAL:HG22	1:B:751:ILE:HD13	1.99	0.44
1:A:876:LEU:HD23	1:A:876:LEU:O	2.17	0.44
1:A:715:LEU:CD1	1:A:903:VAL:HG21	2.48	0.43
1:B:723:GLU:CD	1:B:906:PRO:HB2	2.39	0.43
1:B:715:LEU:HD21	2:B:1000:AS0:H13	1.97	0.42
2:B:1000:AS0:H19	2:B:1000:AS0:H162	1.88	0.42
2:B:1000:AS0:H221	2:B:1000:AS0:C23	2.50	0.41
1:A:723:GLU:O	1:A:727:LEU:HD13	2.20	0.41
1:A:918:PRO:HD2	4:A:2036:HOH:O	2.21	0.40

There are no symmetry-related clashes.

5.3 Torsion angles [i](#)

5.3.1 Protein backbone [i](#)

In the following table, the Percentiles column shows the percent Ramachandran outliers of the chain as a percentile score with respect to all X-ray entries followed by that with respect to entries of similar resolution.

The Analysed column shows the number of residues for which the backbone conformation was analysed, and the total number of residues.

Mol	Chain	Analysed	Favoured	Allowed	Outliers	Percentiles	
1	A	250/260 (96%)	243 (97%)	7 (3%)	0	100	100
1	B	252/260 (97%)	242 (96%)	9 (4%)	1 (0%)	34	30
All	All	502/520 (96%)	485 (97%)	16 (3%)	1 (0%)	47	44

All (1) Ramachandran outliers are listed below:

Mol	Chain	Res	Type
1	B	898	SER

5.3.2 Protein sidechains [i](#)

In the following table, the Percentiles column shows the percent sidechain outliers of the chain as a percentile score with respect to all X-ray entries followed by that with respect to entries of similar resolution.

The Analysed column shows the number of residues for which the sidechain conformation was analysed, and the total number of residues.

Mol	Chain	Analysed	Rotameric	Outliers	Percentiles	
1	A	234/241 (97%)	230 (98%)	4 (2%)	60	65
1	B	236/241 (98%)	228 (97%)	8 (3%)	37	36
All	All	470/482 (98%)	458 (97%)	12 (3%)	49	48

All (12) residues with a non-rotameric sidechain are listed below:

Mol	Chain	Res	Type
1	A	686	PRO
1	A	828	ASN
1	A	833	GLU
1	A	860	GLN
1	B	683	LEU
1	B	711	SER
1	B	744[A]	ILE
1	B	744[B]	ILE
1	B	787	GLN
1	B	802	TRP
1	B	833	GLU
1	B	899	ARG

Some sidechains can be flipped to improve hydrogen bonding and reduce clashes. All (13) such sidechains are listed below:

Mol	Chain	Res	Type
1	A	703	HIS
1	A	812	GLN
1	A	815	GLN
1	A	828	ASN
1	A	860	GLN
1	A	879	ASN
1	A	886	GLN
1	A	893	ASN
1	B	703	HIS
1	B	787	GLN
1	B	868	GLN
1	B	879	ASN
1	B	893	ASN

5.3.3 RNA [i](#)

There are no RNA molecules in this entry.

5.4 Non-standard residues in protein, DNA, RNA chains [i](#)

There are no non-standard protein/DNA/RNA residues in this entry.

5.5 Carbohydrates [i](#)

There are no carbohydrates in this entry.

5.6 Ligand geometry [i](#)

3 ligands are modelled in this entry.

In the following table, the Counts columns list the number of bonds (or angles) for which Mogul statistics could be retrieved, the number of bonds (or angles) that are observed in the model and the number of bonds (or angles) that are defined in the Chemical Component Dictionary. The Link column lists molecule types, if any, to which the group is linked. The Z score for a bond length (or angle) is the number of standard deviations the observed value is removed from the expected value. A bond length (or angle) with $|Z| > 2$ is considered an outlier worth inspection. RMSZ is the root-mean-square of all Z scores of the bond lengths (or angles).

Mol	Type	Chain	Res	Link	Bond lengths			Bond angles		
					Counts	RMSZ	$\# Z > 2$	Counts	RMSZ	$\# Z > 2$
2	AS0	B	1000	-	33,37,37	3.03	9 (27%)	37,56,56	4.00	17 (45%)

Mol	Type	Chain	Res	Link	Bond lengths			Bond angles		
					Counts	RMSZ	# Z > 2	Counts	RMSZ	# Z > 2
2	AS0	A	1000	-	33,37,37	3.02	10 (30%)	37,56,56	3.96	17 (45%)
3	SO4	A	1934	-	4,4,4	0.37	0	6,6,6	0.43	0

In the following table, the Chirals column lists the number of chiral outliers, the number of chiral centers analysed, the number of these observed in the model and the number defined in the Chemical Component Dictionary. Similar counts are reported in the Torsion and Rings columns. '-' means no outliers of that kind were identified.

Mol	Type	Chain	Res	Link	Chirals	Torsions	Rings
2	AS0	B	1000	-	-	7/14/84/84	0/5/5/5
2	AS0	A	1000	-	-	6/14/84/84	0/5/5/5

All (19) bond length outliers are listed below:

Mol	Chain	Res	Type	Atoms	Z	Observed(Å)	Ideal(Å)
2	B	1000	AS0	C12-C11	-7.23	1.35	1.53
2	A	1000	AS0	C12-C11	-7.22	1.35	1.53
2	B	1000	AS0	C25-C26	-6.44	1.38	1.53
2	A	1000	AS0	C31-C23	-5.95	1.39	1.53
2	A	1000	AS0	C12-C13	-5.94	1.40	1.50
2	B	1000	AS0	C31-C23	-5.88	1.39	1.53
2	B	1000	AS0	C12-C13	-5.85	1.40	1.50
2	A	1000	AS0	C25-C26	-5.83	1.40	1.53
2	B	1000	AS0	C30-C26	-5.46	1.41	1.53
2	A	1000	AS0	C24-C23	-5.46	1.40	1.53
2	A	1000	AS0	C25-C24	-5.39	1.39	1.52
2	B	1000	AS0	C25-C24	-5.31	1.39	1.52
2	A	1000	AS0	C31-C30	-5.27	1.39	1.52
2	A	1000	AS0	C30-C26	-5.18	1.41	1.53
2	B	1000	AS0	C31-C30	-5.04	1.40	1.52
2	B	1000	AS0	C24-C23	-4.82	1.41	1.53
2	B	1000	AS0	C11-C17	-4.39	1.48	1.51
2	A	1000	AS0	C11-C17	-4.30	1.48	1.51
2	A	1000	AS0	C17-C18	2.11	1.35	1.33

All (34) bond angle outliers are listed below:

Mol	Chain	Res	Type	Atoms	Z	Observed(°)	Ideal(°)
2	A	1000	AS0	C12-C11-C17	14.29	122.24	108.18
2	B	1000	AS0	C12-C11-C17	12.95	120.92	108.18
2	B	1000	AS0	C30-C26-C27	8.68	122.74	111.11

Continued on next page...

Continued from previous page...

Mol	Chain	Res	Type	Atoms	Z	Observed(°)	Ideal(°)
2	A	1000	AS0	C30-C26-C25	8.53	119.47	109.43
2	B	1000	AS0	C30-C26-C25	8.03	118.89	109.43
2	A	1000	AS0	C30-C26-C27	7.39	121.01	111.11
2	A	1000	AS0	C25-C26-C27	6.20	119.42	111.11
2	B	1000	AS0	C24-C25-C26	6.02	120.54	110.76
2	B	1000	AS0	C31-C30-C26	5.86	120.27	110.76
2	A	1000	AS0	C31-C30-C26	5.52	119.73	110.76
2	B	1000	AS0	C15-C13-C12	5.48	124.05	115.89
2	B	1000	AS0	C25-C26-C27	5.38	118.33	111.11
2	A	1000	AS0	C24-C25-C26	5.31	119.38	110.76
2	A	1000	AS0	C31-C23-C24	5.25	118.69	109.44
2	B	1000	AS0	C31-C23-C24	4.70	117.72	109.44
2	A	1000	AS0	C15-C13-C12	4.40	122.44	115.89
2	A	1000	AS0	C25-C24-C23	4.17	121.63	112.24
2	B	1000	AS0	O14-C13-C15	-4.12	115.02	122.05
2	B	1000	AS0	C30-C31-C23	4.02	121.30	112.24
2	B	1000	AS0	C25-C24-C23	4.02	121.28	112.24
2	A	1000	AS0	C10-C11-C17	3.99	118.41	109.62
2	A	1000	AS0	C30-C31-C23	3.92	121.07	112.24
2	B	1000	AS0	C10-C11-C17	3.87	118.13	109.62
2	B	1000	AS0	C16-C17-C18	-3.49	119.62	124.48
2	B	1000	AS0	C20-C21-C7	-2.98	105.39	108.03
2	A	1000	AS0	O14-C13-C15	-2.76	117.34	122.05
2	B	1000	AS0	C15-C16-C17	2.75	115.29	112.11
2	A	1000	AS0	C9-C8-C7	-2.69	107.29	111.48
2	B	1000	AS0	C9-C10-C11	-2.68	106.69	111.18
2	A	1000	AS0	C6-C7-C8	-2.42	114.31	118.15
2	A	1000	AS0	C20-C19-C23	2.35	115.13	112.21
2	A	1000	AS0	C9-C10-C11	-2.33	107.27	111.18
2	B	1000	AS0	C20-C19-C23	2.12	114.84	112.21
2	A	1000	AS0	C22-C21-C20	-2.08	108.25	111.11

There are no chirality outliers.

All (13) torsion outliers are listed below:

Mol	Chain	Res	Type	Atoms
2	B	1000	AS0	O2-C3-C4-C5
2	B	1000	AS0	O2-C3-C4-O32
2	B	1000	AS0	C18-C19-C23-C24
2	B	1000	AS0	C20-C19-C23-C24
2	A	1000	AS0	O2-C3-C4-C5
2	A	1000	AS0	O2-C3-C4-O32

Continued on next page...

Continued from previous page...

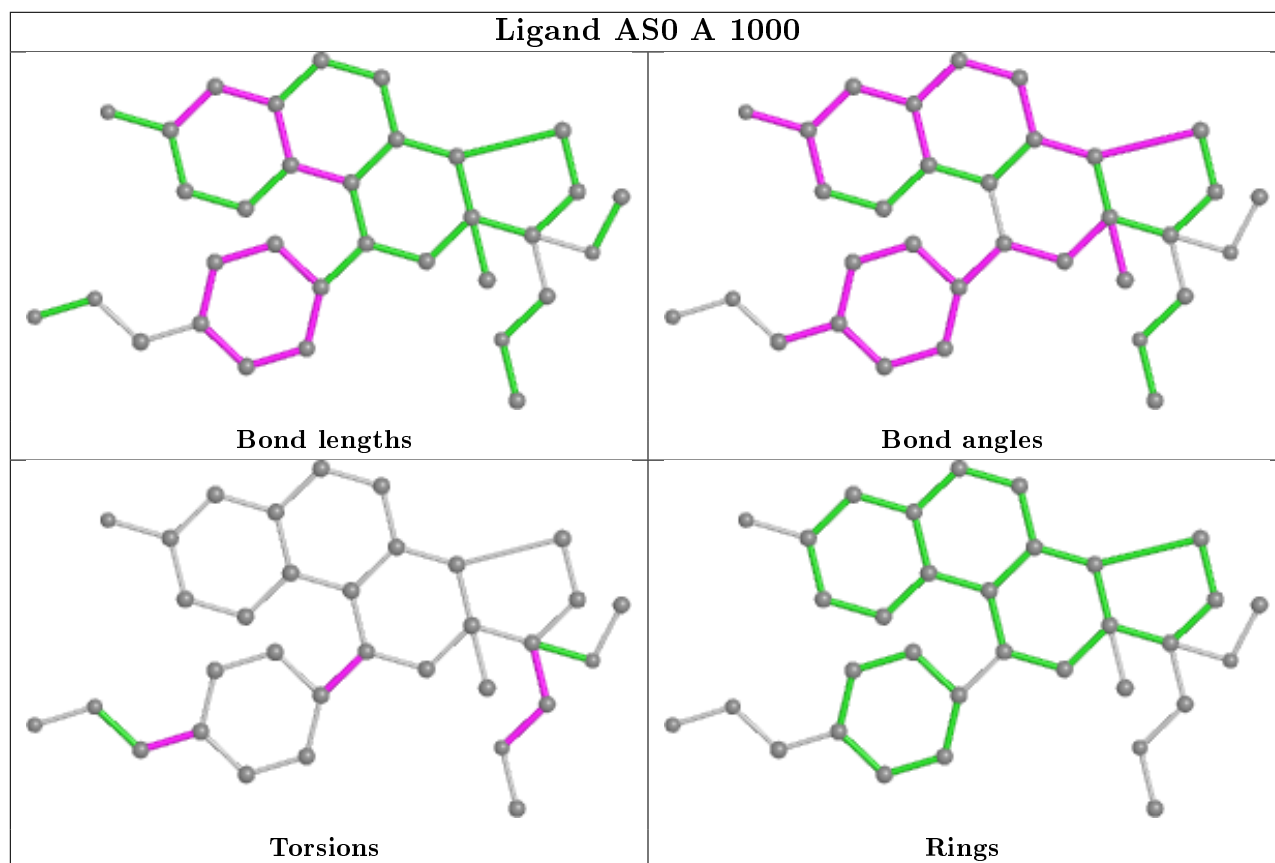
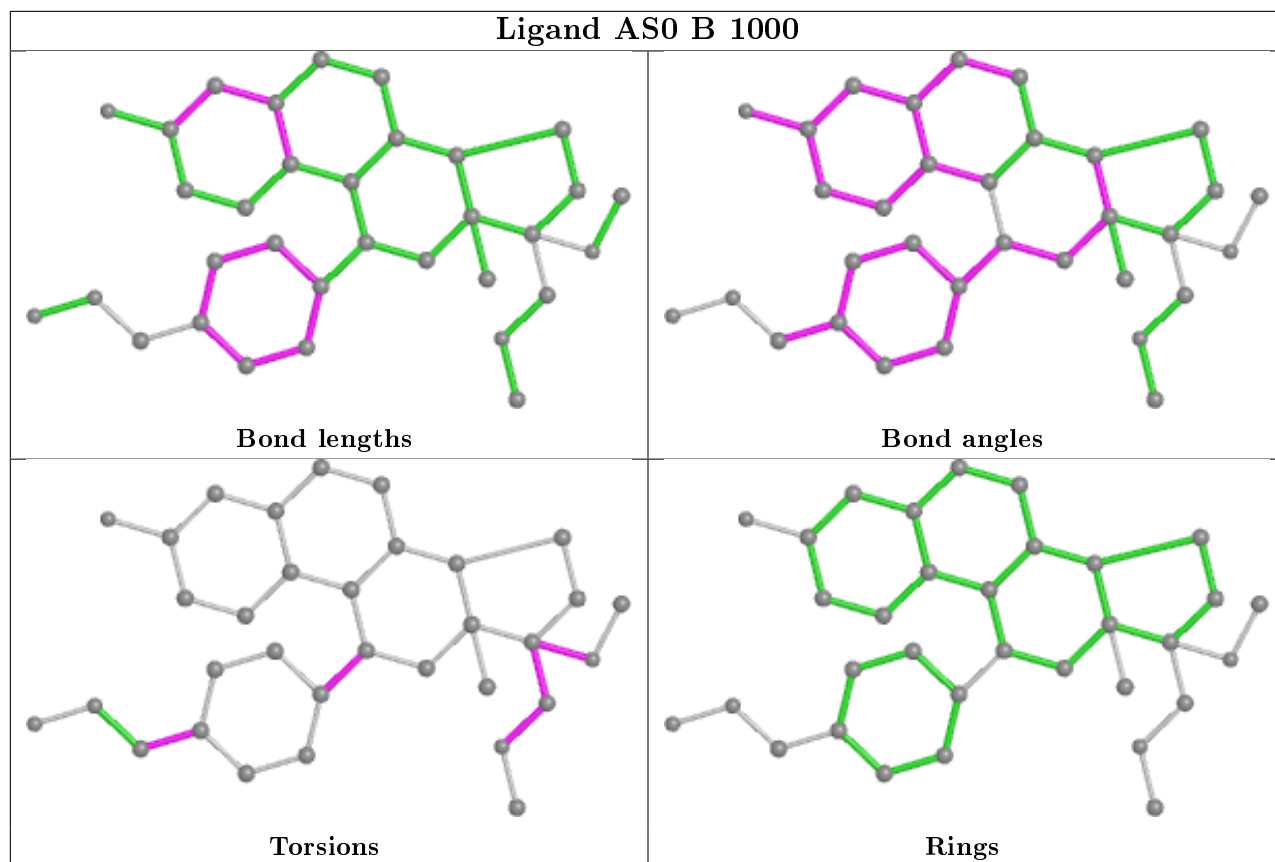
Mol	Chain	Res	Type	Atoms
2	A	1000	AS0	C18-C19-C23-C24
2	A	1000	AS0	C20-C19-C23-C24
2	B	1000	AS0	C4-C3-O2-C1
2	B	1000	AS0	C25-C26-C27-N28
2	A	1000	AS0	C25-C26-C27-N28
2	B	1000	AS0	C5-C4-O32-C33
2	A	1000	AS0	C4-C3-O2-C1

There are no ring outliers.

2 monomers are involved in 9 short contacts:

Mol	Chain	Res	Type	Clashes	Symm-Clashes
2	B	1000	AS0	8	0
2	A	1000	AS0	1	0

The following is a two-dimensional graphical depiction of Mogul quality analysis of bond lengths, bond angles, torsion angles, and ring geometry for all instances of the Ligand of Interest. In addition, ligands with molecular weight > 250 and outliers as shown on the validation Tables will also be included. For torsion angles, if less than 5% of the Mogul distribution of torsion angles is within 10 degrees of the torsion angle in question, then that torsion angle is considered an outlier. Any bond that is central to one or more torsion angles identified as an outlier by Mogul will be highlighted in the graph. For rings, the root-mean-square deviation (RMSD) between the ring in question and similar rings identified by Mogul is calculated over all ring torsion angles. If the average RMSD is greater than 60 degrees and the minimal RMSD between the ring in question and any Mogul-identified rings is also greater than 60 degrees, then that ring is considered an outlier. The outliers are highlighted in purple. The color gray indicates Mogul did not find sufficient equivalents in the CSD to analyse the geometry.



5.7 Other polymers [i](#)

There are no such residues in this entry.

5.8 Polymer linkage issues [i](#)

There are no chain breaks in this entry.

6 Fit of model and data

6.1 Protein, DNA and RNA chains

In the following table, the column labelled ‘#RSRZ> 2’ contains the number (and percentage) of RSRZ outliers, followed by percent RSRZ outliers for the chain as percentile scores relative to all X-ray entries and entries of similar resolution. The OWAB column contains the minimum, median, 95th percentile and maximum values of the occupancy-weighted average B-factor per residue. The column labelled ‘Q< 0.9’ lists the number of (and percentage) of residues with an average occupancy less than 0.9.

Mol	Chain	Analysed	<RSRZ>	#RSRZ>2	OWAB(Å ²)	Q<0.9
1	A	250/260 (96%)	0.35	16 (6%) 19 18	24, 39, 62, 77	0
1	B	250/260 (96%)	0.40	20 (8%) 12 11	20, 33, 66, 81	0
All	All	500/520 (96%)	0.38	36 (7%) 15 14	20, 36, 65, 81	0

All (36) RSRZ outliers are listed below:

Mol	Chain	Res	Type	RSRZ
1	B	903	VAL	12.4
1	B	901	LEU	8.8
1	B	900	ALA	7.7
1	B	902	SER	6.9
1	A	863	VAL	5.5
1	B	708	PRO	5.4
1	A	862	GLY	5.3
1	A	864	VAL	5.2
1	A	903	VAL	5.1
1	B	707	LYS	4.5
1	B	860	GLN	4.5
1	B	863	VAL	4.4
1	B	898	SER	4.1
1	A	902	SER	4.0
1	A	708	PRO	4.0
1	A	683	LEU	3.6
1	B	865	SER	3.5
1	B	704	ASP	3.4
1	A	860	GLN	3.4
1	A	698	VAL	3.3
1	B	864	VAL	3.0
1	A	705	ASN	2.9
1	B	862	GLY	2.9
1	B	899	ARG	2.8

Continued on next page...

Continued from previous page...

Mol	Chain	Res	Type	RSRZ
1	A	707	LYS	2.8
1	A	706	THR	2.6
1	B	705	ASN	2.6
1	B	712	SER	2.5
1	B	709	ASP	2.5
1	B	706	THR	2.4
1	A	904	GLU	2.4
1	B	703	HIS	2.4
1	A	703	HIS	2.2
1	A	700	TYR	2.1
1	B	871	TYR	2.1
1	A	866	SER	2.1

6.2 Non-standard residues in protein, DNA, RNA chains [i](#)

There are no non-standard protein/DNA/RNA residues in this entry.

6.3 Carbohydrates [i](#)

There are no carbohydrates in this entry.

6.4 Ligands [i](#)

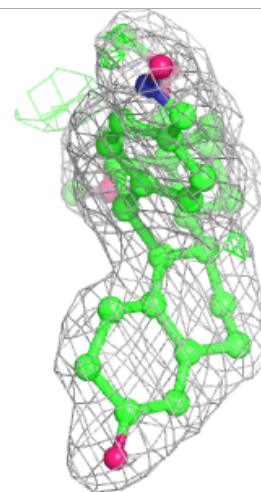
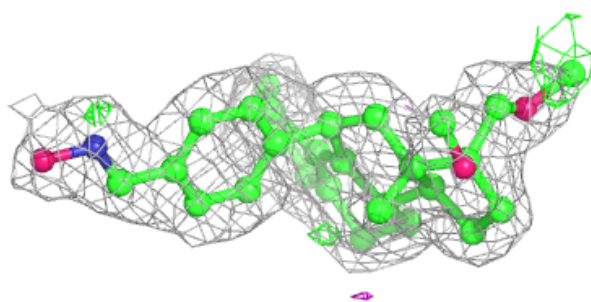
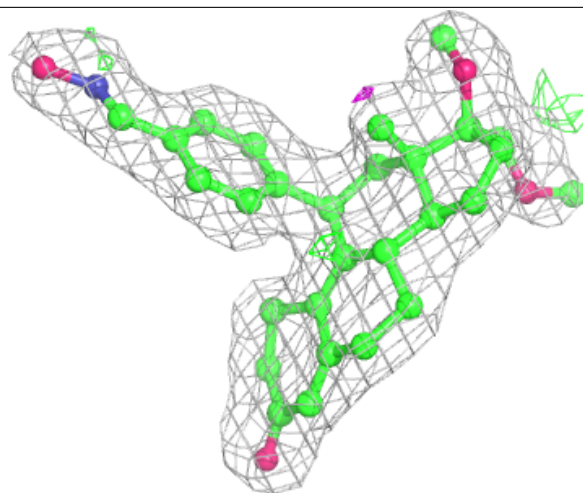
In the following table, the Atoms column lists the number of modelled atoms in the group and the number defined in the chemical component dictionary. The B-factors column lists the minimum, median, 95th percentile and maximum values of B factors of atoms in the group. The column labelled 'Q< 0.9' lists the number of atoms with occupancy less than 0.9.

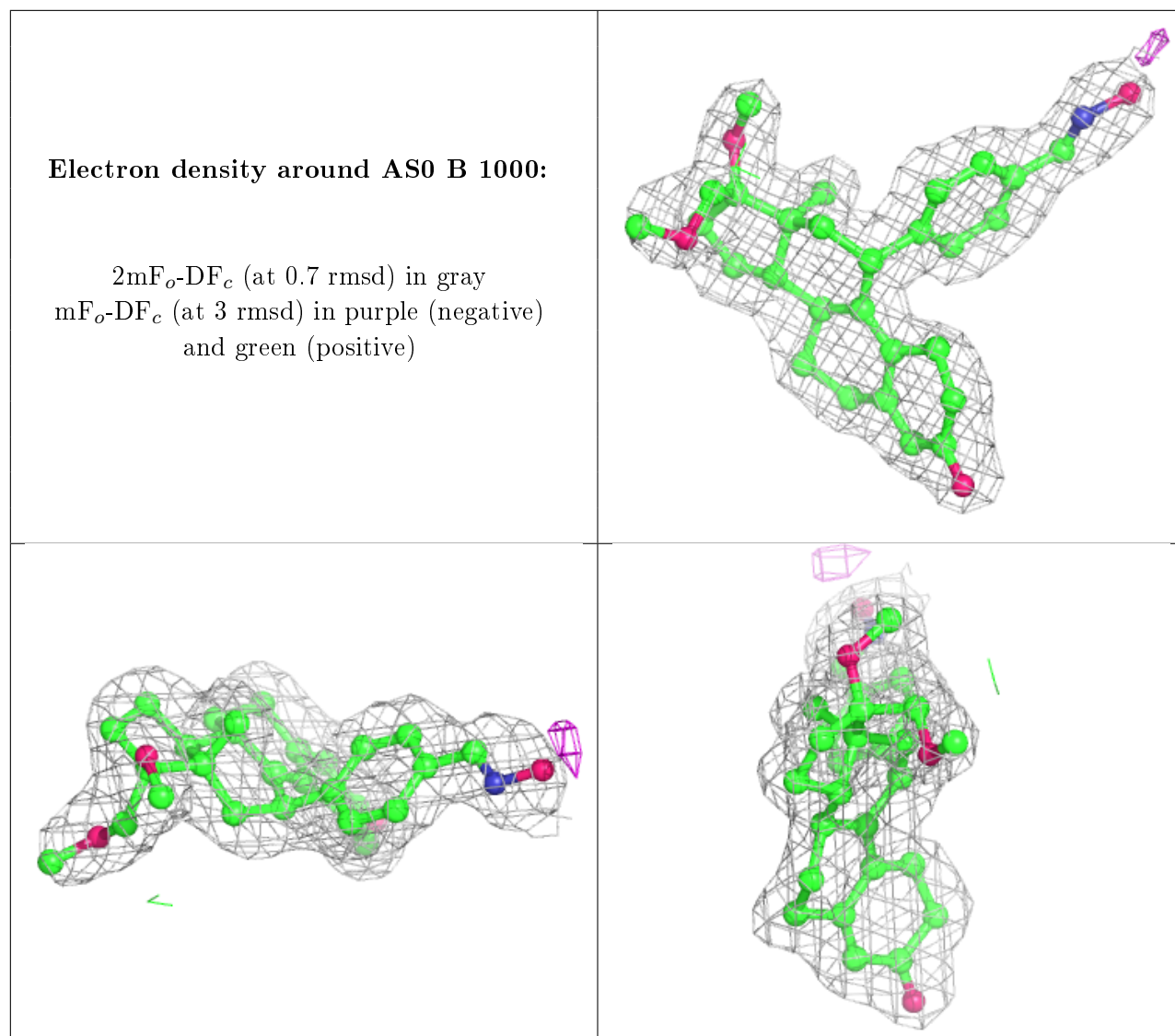
Mol	Type	Chain	Res	Atoms	RSCC	RSR	B-factors(Å ²)	Q<0.9
2	AS0	A	1000	33/33	0.94	0.11	25,30,35,41	0
2	AS0	B	1000	33/33	0.95	0.12	23,28,36,39	0
3	SO4	A	1934	5/5	0.97	0.10	24,26,27,30	0

The following is a graphical depiction of the model fit to experimental electron density of all instances of the Ligand of Interest. In addition, ligands with molecular weight > 250 and outliers as shown on the geometry validation Tables will also be included. Each fit is shown from different orientation to approximate a three-dimensional view.

Electron density around AS0 A 1000:

$2mF_o-DF_c$ (at 0.7 rmsd) in gray
 mF_o-DF_c (at 3 rmsd) in purple (negative)
and green (positive)





6.5 Other polymers [\(i\)](#)

There are no such residues in this entry.