



Full wwPDB X-ray Structure Validation Report ⓘ

Jan 9, 2024 – 03:27 pm GMT

PDB ID : 8ACI
Title : Structure of ARG-117 Fab in complex with a fragment of complement C2, neutral pH
Authors : Olesen, H.G.; Andersen, G.R.
Deposited on : 2022-07-05
Resolution : 1.85 Å (reported)

This is a Full wwPDB X-ray Structure Validation Report for a publicly released PDB entry.

We welcome your comments at validation@mail.wwpdb.org

A user guide is available at

<https://www.wwpdb.org/validation/2017/XrayValidationReportHelp>

with specific help available everywhere you see the ⓘ symbol.

The types of validation reports are described at

<http://www.wwpdb.org/validation/2017/FAQs#types>.

The following versions of software and data (see [references ⓘ](#)) were used in the production of this report:

MolProbity : 4.02b-467
Mogul : 1.8.4, CSD as541be (2020)
Xtriage (Phenix) : 1.13
EDS : 2.36
Percentile statistics : 20191225.v01 (using entries in the PDB archive December 25th 2019)
Refmac : 5.8.0158
CCP4 : 7.0.044 (Gargrove)
Ideal geometry (proteins) : Engh & Huber (2001)
Ideal geometry (DNA, RNA) : Parkinson et al. (1996)
Validation Pipeline (wwPDB-VP) : 2.36

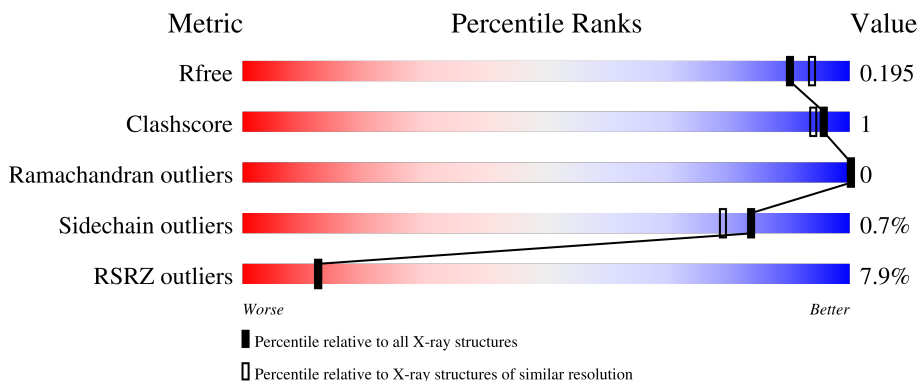
1 Overall quality at a glance

The following experimental techniques were used to determine the structure:

X-RAY DIFFRACTION

The reported resolution of this entry is 1.85 Å.

Percentile scores (ranging between 0-100) for global validation metrics of the entry are shown in the following graphic. The table shows the number of entries on which the scores are based.



Metric	Whole archive (#Entries)	Similar resolution (#Entries, resolution range(Å))
R_{free}	130704	2469 (1.86-1.86)
Clashscore	141614	2625 (1.86-1.86)
Ramachandran outliers	138981	2592 (1.86-1.86)
Sidechain outliers	138945	2592 (1.86-1.86)
RSRZ outliers	127900	2436 (1.86-1.86)

The table below summarises the geometric issues observed across the polymeric chains and their fit to the electron density. The red, orange, yellow and green segments of the lower bar indicate the fraction of residues that contain outliers for ≥ 3 , 2, 1 and 0 types of geometric quality criteria respectively. A grey segment represents the fraction of residues that are not modelled. The numeric value for each fraction is indicated below the corresponding segment, with a dot representing fractions $\leq 5\%$. The upper red bar (where present) indicates the fraction of residues that have poor fit to the electron density. The numeric value is given above the bar.

Mol	Chain	Length	Quality of chain
1	A	197	 21% 66% 30%
2	H	219	 % 99%
3	K	128	 5% 95%
4	L	218	 2% 97%
5	X	2	 50% 50%

2 Entry composition

There are 9 unique types of molecules in this entry. The entry contains 10742 atoms, of which 5093 are hydrogens and 0 are deuteriums.

In the tables below, the ZeroOcc column contains the number of atoms modelled with zero occupancy, the AltConf column contains the number of residues with at least one atom in alternate conformation and the Trace column contains the number of residues modelled with at most 2 atoms.

- Molecule 1 is a protein called Complement C2b fragment.

Mol	Chain	Residues	Atoms					ZeroOcc	AltConf	Trace	
			Total	C	H	N	O				S
1	A	138	1987	635	957	190	194	11	0	1	0

- Molecule 2 is a protein called ARGX-117 Fab heavy chain.

Mol	Chain	Residues	Atoms					ZeroOcc	AltConf	Trace	
			Total	C	H	N	O				S
2	H	219	3245	1034	1598	272	334	7	0	0	0

- Molecule 3 is a protein called nanobody specific for kappa light chain of Fab.

Mol	Chain	Residues	Atoms					ZeroOcc	AltConf	Trace	
			Total	C	H	N	O				S
3	K	125	1872	600	902	174	192	4	0	0	0

- Molecule 4 is a protein called ARGX-117 Fab light chain.

Mol	Chain	Residues	Atoms					ZeroOcc	AltConf	Trace	
			Total	C	H	N	O				S
4	L	218	3319	1050	1636	287	340	6	0	0	0

- Molecule 5 is an oligosaccharide called alpha-L-fucopyranose-(1-6)-2-acetamido-2-deoxy-beta-D-glucopyranose.



Mol	Chain	Residues	Atoms				ZeroOcc	AltConf	Trace
			Total	C	N	O			
5	X	2	24	14	1	9	0	0	0

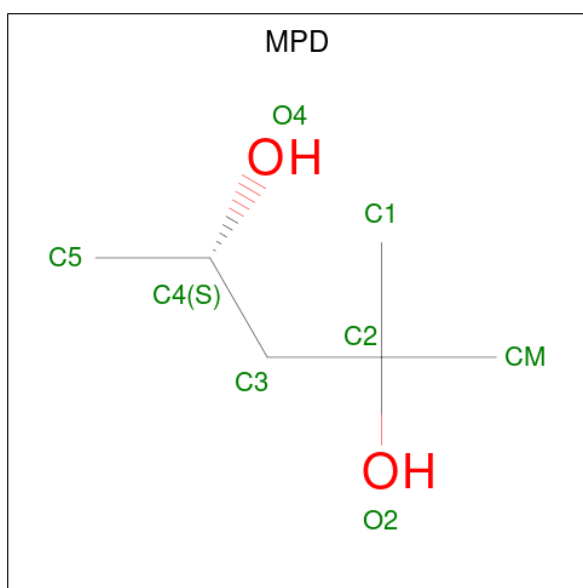
- Molecule 6 is CALCIUM ION (three-letter code: CA) (formula: Ca).

Mol	Chain	Residues	Atoms	ZeroOcc	AltConf
6	H	1	Total Ca 1 1	0	0

- Molecule 7 is CHLORIDE ION (three-letter code: CL) (formula: Cl).

Mol	Chain	Residues	Atoms	ZeroOcc	AltConf
7	K	1	Total Cl 1 1	0	0

- Molecule 8 is (4S)-2-METHYL-2,4-PENTANEDIOL (three-letter code: MPD) (formula: C₆H₁₄O₂).



Mol	Chain	Residues	Atoms	ZeroOcc	AltConf
8	L	1	Total C O 8 6 2	0	0

- Molecule 9 is water.

Mol	Chain	Residues	Atoms	ZeroOcc	AltConf
9	A	34	Total O 34 34	0	0
9	H	109	Total O 109 109	0	0
9	K	36	Total O 36 36	0	0

Continued on next page...

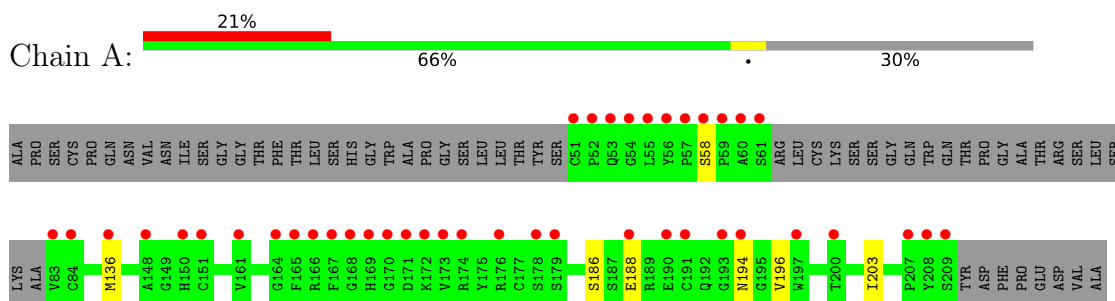
Continued from previous page...

Mol	Chain	Residues	Atoms		ZeroOcc	AltConf
9	L	106	Total 106	O 106	0	0

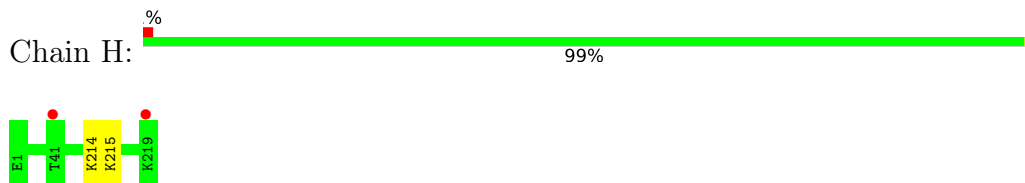
3 Residue-property plots [i](#)

These plots are drawn for all protein, RNA, DNA and oligosaccharide chains in the entry. The first graphic for a chain summarises the proportions of the various outlier classes displayed in the second graphic. The second graphic shows the sequence view annotated by issues in geometry and electron density. Residues are color-coded according to the number of geometric quality criteria for which they contain at least one outlier: green = 0, yellow = 1, orange = 2 and red = 3 or more. A red dot above a residue indicates a poor fit to the electron density ($RSRZ > 2$). Stretches of 2 or more consecutive residues without any outlier are shown as a green connector. Residues present in the sample, but not in the model, are shown in grey.

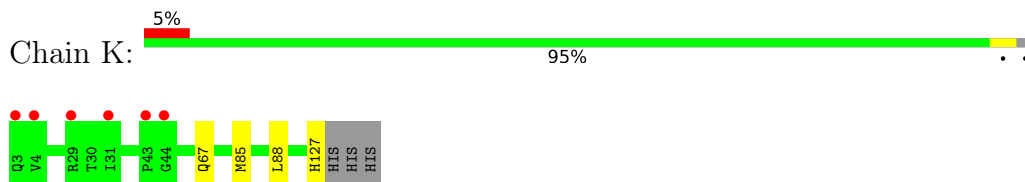
- Molecule 1: Complement C2b fragment



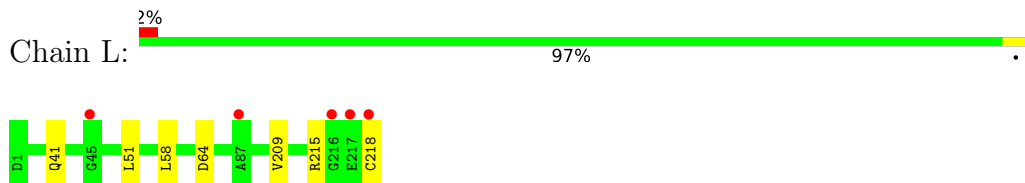
- Molecule 2: ARGX-117 Fab heavy chain



- Molecule 3: nanobody specific for kappa light chain of Fab



- Molecule 4: ARGX-117 Fab light chain



- Molecule 5: alpha-L-fucopyranose-(1-6)-2-acetamido-2-deoxy-beta-D-glucopyranose



4 Data and refinement statistics

Property	Value	Source
Space group	P 21 21 21	Depositor
Cell constants a, b, c, α , β , γ	71.59Å 88.76Å 144.78Å 90.00° 90.00° 90.00°	Depositor
Resolution (Å)	44.16 – 1.85 44.16 – 1.79	Depositor EDS
% Data completeness (in resolution range)	100.0 (44.16-1.85) 99.4 (44.16-1.79)	Depositor EDS
R_{merge}	0.14	Depositor
R_{sym}	(Not available)	Depositor
$\langle I/\sigma(I) \rangle$ ¹	0.96 (at 1.79Å)	Xtrriage
Refinement program	PHENIX 1.19.2_4158	Depositor
R, R_{free}	0.187 , 0.199 0.182 , 0.195	Depositor DCC
R_{free} test set	4332 reflections (5.01%)	wwPDB-VP
Wilson B-factor (Å ²)	42.6	Xtrriage
Anisotropy	0.140	Xtrriage
Bulk solvent k_{sol} (e/Å ³), B_{sol} (Å ²)	0.39 , 50.8	EDS
L-test for twinning ²	$\langle L \rangle = 0.49$, $\langle L^2 \rangle = 0.32$	Xtrriage
Estimated twinning fraction	No twinning to report.	Xtrriage
F_o, F_c correlation	0.97	EDS
Total number of atoms	10742	wwPDB-VP
Average B, all atoms (Å ²)	61.0	wwPDB-VP

Xtrriage's analysis on translational NCS is as follows: *The largest off-origin peak in the Patterson function is 4.54% of the height of the origin peak. No significant pseudotranslation is detected.*

¹Intensities estimated from amplitudes.

²Theoretical values of $\langle |L| \rangle$, $\langle L^2 \rangle$ for acentric reflections are 0.5, 0.333 respectively for untwinned datasets, and 0.375, 0.2 for perfectly twinned datasets.

5 Model quality [i](#)

5.1 Standard geometry [i](#)

Bond lengths and bond angles in the following residue types are not validated in this section: CA, CL, MPD, FUC, NAG

The Z score for a bond length (or angle) is the number of standard deviations the observed value is removed from the expected value. A bond length (or angle) with $|Z| > 5$ is considered an outlier worth inspection. RMSZ is the root-mean-square of all Z scores of the bond lengths (or angles).

Mol	Chain	Bond lengths		Bond angles	
		RMSZ	# Z >5	RMSZ	# Z >5
1	A	0.49	0/1074	0.65	0/1459
2	H	0.54	0/1685	0.64	0/2294
3	K	0.54	0/992	0.65	0/1341
4	L	0.60	1/1719 (0.1%)	0.67	0/2332
All	All	0.55	1/5470 (0.0%)	0.65	0/7426

All (1) bond length outliers are listed below:

Mol	Chain	Res	Type	Atoms	Z	Observed(Å)	Ideal(Å)
4	L	209	VAL	CB-CG2	-5.08	1.42	1.52

There are no bond angle outliers.

There are no chirality outliers.

There are no planarity outliers.

5.2 Too-close contacts [i](#)

In the following table, the Non-H and H(model) columns list the number of non-hydrogen atoms and hydrogen atoms in the chain respectively. The H(added) column lists the number of hydrogen atoms added and optimized by MolProbity. The Clashes column lists the number of clashes within the asymmetric unit, whereas Symm-Clashes lists symmetry-related clashes.

Mol	Chain	Non-H	H(model)	H(added)	Clashes	Symm-Clashes
1	A	1030	957	953	4	0
2	H	1647	1598	1598	0	0
3	K	970	902	902	3	0
4	L	1683	1636	1636	3	0
5	X	24	0	22	0	0
6	H	1	0	0	0	0

Continued on next page...

Continued from previous page...

Mol	Chain	Non-H	H(model)	H(added)	Clashes	Symm-Clashes
7	K	1	0	0	0	0
8	L	8	0	14	2	0
9	A	34	0	0	1	0
9	H	109	0	0	0	0
9	K	36	0	0	2	0
9	L	106	0	0	2	0
All	All	5649	5093	5125	12	0

The all-atom clashscore is defined as the number of clashes found per 1000 atoms (including hydrogen atoms). The all-atom clashscore for this structure is 1.

All (12) close contacts within the same asymmetric unit are listed below, sorted by their clash magnitude.

Atom-1	Atom-2	Interatomic distance (Å)	Clash overlap (Å)
3:K:127:HIS:O	9:K:301:HOH:O	2.08	0.71
8:L:301:MPD:O2	9:L:401:HOH:O	2.11	0.68
1:A:194:ASN:ND2	9:A:301:HOH:O	2.35	0.59
4:L:215:ARG:O	9:L:402:HOH:O	2.18	0.55
4:L:58:LEU:HD11	4:L:64:ASP:HA	1.93	0.51
3:K:85:MET:HE2	3:K:88:LEU:HD21	1.93	0.49
3:K:67:GLN:OE1	9:K:302:HOH:O	2.20	0.49
4:L:41:GLN:HB2	4:L:51:LEU:HD11	1.95	0.49
1:A:136:MET:HE1	1:A:203:ILE:CG2	2.43	0.48
1:A:194:ASN:OD1	1:A:196:VAL:HB	2.17	0.45
1:A:186:SER:OG	1:A:188:GLU:O	2.36	0.43
8:L:301:MPD:H4	8:L:301:MPD:HM1	1.69	0.43

There are no symmetry-related clashes.

5.3 Torsion angles [i](#)

5.3.1 Protein backbone [i](#)

In the following table, the Percentiles column shows the percent Ramachandran outliers of the chain as a percentile score with respect to all X-ray entries followed by that with respect to entries of similar resolution.

The Analysed column shows the number of residues for which the backbone conformation was analysed, and the total number of residues.

Mol	Chain	Analysed	Favoured	Allowed	Outliers	Percentiles	
1	A	135/197 (68%)	132 (98%)	3 (2%)	0	100	100
2	H	217/219 (99%)	214 (99%)	3 (1%)	0	100	100
3	K	123/128 (96%)	120 (98%)	3 (2%)	0	100	100
4	L	216/218 (99%)	210 (97%)	6 (3%)	0	100	100
All	All	691/762 (91%)	676 (98%)	15 (2%)	0	100	100

There are no Ramachandran outliers to report.

5.3.2 Protein sidechains [i](#)

In the following table, the Percentiles column shows the percent sidechain outliers of the chain as a percentile score with respect to all X-ray entries followed by that with respect to entries of similar resolution.

The Analysed column shows the number of residues for which the sidechain conformation was analysed, and the total number of residues.

Mol	Chain	Analysed	Rotameric	Outliers	Percentiles	
1	A	114/161 (71%)	113 (99%)	1 (1%)	78	72
2	H	185/185 (100%)	183 (99%)	2 (1%)	73	65
3	K	101/104 (97%)	101 (100%)	0	100	100
4	L	191/191 (100%)	190 (100%)	1 (0%)	88	86
All	All	591/641 (92%)	587 (99%)	4 (1%)	84	79

All (4) residues with a non-rotameric sidechain are listed below:

Mol	Chain	Res	Type
1	A	58	SER
2	H	214	LYS
2	H	215	LYS
4	L	218	CYS

Sometimes sidechains can be flipped to improve hydrogen bonding and reduce clashes. There are no such sidechains identified.

5.3.3 RNA [i](#)

There are no RNA molecules in this entry.

5.4 Non-standard residues in protein, DNA, RNA chains [i](#)

There are no non-standard protein/DNA/RNA residues in this entry.

5.5 Carbohydrates [i](#)

2 monosaccharides are modelled in this entry.

In the following table, the Counts columns list the number of bonds (or angles) for which Mogul statistics could be retrieved, the number of bonds (or angles) that are observed in the model and the number of bonds (or angles) that are defined in the Chemical Component Dictionary. The Link column lists molecule types, if any, to which the group is linked. The Z score for a bond length (or angle) is the number of standard deviations the observed value is removed from the expected value. A bond length (or angle) with $|Z| > 2$ is considered an outlier worth inspection. RMSZ is the root-mean-square of all Z scores of the bond lengths (or angles).

Mol	Type	Chain	Res	Link	Bond lengths			Bond angles		
					Counts	RMSZ	# Z > 2	Counts	RMSZ	# Z > 2
5	NAG	X	1	1,5	14,14,15	0.33	0	17,19,21	0.72	0
5	FUC	X	2	5	10,10,11	0.56	0	14,14,16	0.90	1 (7%)

In the following table, the Chirals column lists the number of chiral outliers, the number of chiral centers analysed, the number of these observed in the model and the number defined in the Chemical Component Dictionary. Similar counts are reported in the Torsion and Rings columns. '-' means no outliers of that kind were identified.

Mol	Type	Chain	Res	Link	Chirals	Torsions	Rings
5	NAG	X	1	1,5	-	2/6/23/26	0/1/1/1
5	FUC	X	2	5	-	-	0/1/1/1

There are no bond length outliers.

All (1) bond angle outliers are listed below:

Mol	Chain	Res	Type	Atoms	Z	Observed(°)	Ideal(°)
5	X	2	FUC	C1-O5-C5	2.24	117.86	112.78

There are no chirality outliers.

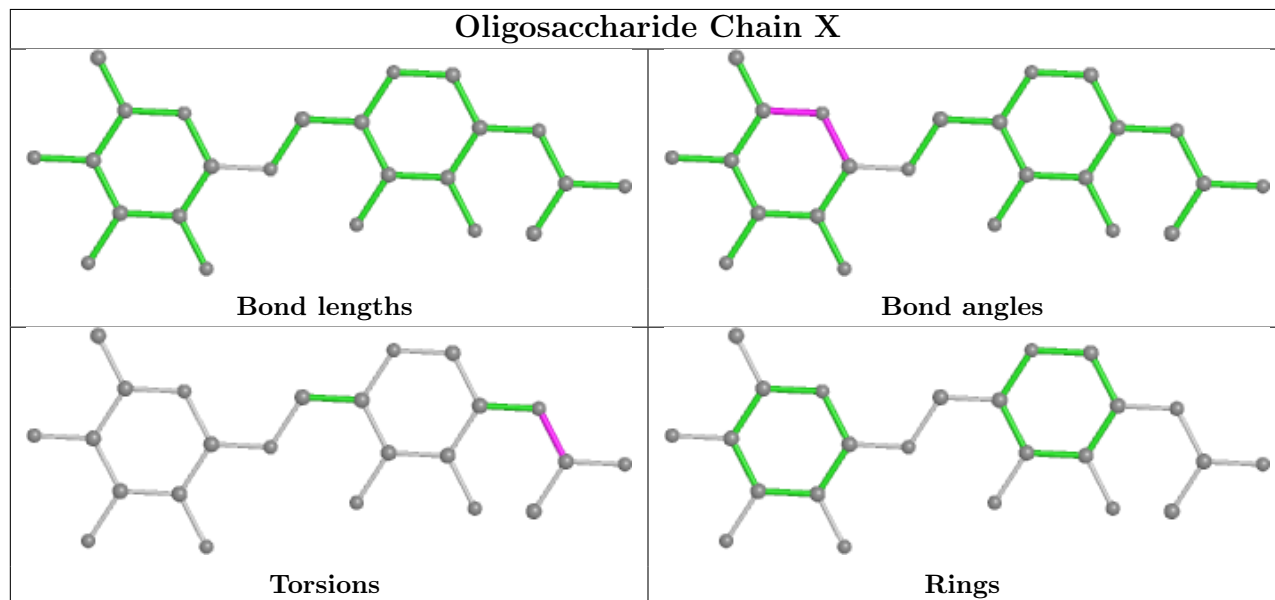
All (2) torsion outliers are listed below:

Mol	Chain	Res	Type	Atoms
5	X	1	NAG	C8-C7-N2-C2
5	X	1	NAG	O7-C7-N2-C2

There are no ring outliers.

No monomer is involved in short contacts.

The following is a two-dimensional graphical depiction of Mogul quality analysis of bond lengths, bond angles, torsion angles, and ring geometry for oligosaccharide.



5.6 Ligand geometry [i](#)

Of 3 ligands modelled in this entry, 2 are monoatomic - leaving 1 for Mogul analysis.

In the following table, the Counts columns list the number of bonds (or angles) for which Mogul statistics could be retrieved, the number of bonds (or angles) that are observed in the model and the number of bonds (or angles) that are defined in the Chemical Component Dictionary. The Link column lists molecule types, if any, to which the group is linked. The Z score for a bond length (or angle) is the number of standard deviations the observed value is removed from the expected value. A bond length (or angle) with $|Z| > 2$ is considered an outlier worth inspection. RMSZ is the root-mean-square of all Z scores of the bond lengths (or angles).

Mol	Type	Chain	Res	Link	Bond lengths			Bond angles		
					Counts	RMSZ	# Z > 2	Counts	RMSZ	# Z > 2
8	MPD	L	301	-	7,7,7	0.37	0	9,10,10	0.44	0

In the following table, the Chirals column lists the number of chiral outliers, the number of chiral centers analysed, the number of these observed in the model and the number defined in the Chemical Component Dictionary. Similar counts are reported in the Torsion and Rings columns. '-' means no outliers of that kind were identified.

Mol	Type	Chain	Res	Link	Chirals	Torsions	Rings
8	MPD	L	301	-	-	2/5/5/5	-

There are no bond length outliers.

There are no bond angle outliers.

There are no chirality outliers.

All (2) torsion outliers are listed below:

Mol	Chain	Res	Type	Atoms
8	L	301	MPD	C2-C3-C4-C5
8	L	301	MPD	C2-C3-C4-O4

There are no ring outliers.

1 monomer is involved in 2 short contacts:

Mol	Chain	Res	Type	Clashes	Symm-Clashes
8	L	301	MPD	2	0

5.7 Other polymers [i](#)

There are no such residues in this entry.

5.8 Polymer linkage issues [i](#)

There are no chain breaks in this entry.

6 Fit of model and data

6.1 Protein, DNA and RNA chains

In the following table, the column labelled ‘#RSRZ > 2’ contains the number (and percentage) of RSRZ outliers, followed by percent RSRZ outliers for the chain as percentile scores relative to all X-ray entries and entries of similar resolution. The OWAB column contains the minimum, median, 95th percentile and maximum values of the occupancy-weighted average B-factor per residue. The column labelled ‘Q < 0.9’ lists the number of (and percentage) of residues with an average occupancy less than 0.9.

Mol	Chain	Analysed	<RSRZ>	#RSRZ>2	OWAB(Å ²)	Q<0.9
1	A	138/197 (70%)	1.30	42 (30%) 0 0	38, 75, 139, 152	1 (0%)
2	H	219/219 (100%)	0.03	2 (0%) 84 84	35, 48, 77, 119	0
3	K	125/128 (97%)	0.20	6 (4%) 30 29	35, 48, 75, 96	0
4	L	218/218 (100%)	0.17	5 (2%) 60 59	33, 44, 70, 143	0
All	All	700/762 (91%)	0.35	55 (7%) 12 12	33, 48, 109, 152	1 (0%)

All (55) RSRZ outliers are listed below:

Mol	Chain	Res	Type	RSRZ
1	A	59	PRO	8.0
1	A	83	VAL	7.8
1	A	165	PHE	6.2
1	A	172	LYS	6.2
1	A	208	TYR	5.8
1	A	84	CYS	5.8
1	A	170	GLY	5.7
1	A	169	HIS	5.6
1	A	60	ALA	5.4
1	A	57	PRO	5.0
1	A	193	GLY	4.9
1	A	51	CYS	4.9
1	A	167	PHE	4.7
4	L	216	GLY	4.3
1	A	61	SER	4.3
1	A	52	PRO	4.0
1	A	58	SER	3.8
1	A	190	GLU	3.7
1	A	150	HIS	3.7
1	A	173	VAL	3.6
1	A	168	GLY	3.5

Continued on next page...

Continued from previous page...

Mol	Chain	Res	Type	RSRZ
1	A	178	SER	3.5
1	A	171	ASP	3.5
1	A	53	GLN	3.5
3	K	29	ARG	3.4
2	H	219	LYS	3.3
2	H	41	THR	3.3
1	A	136	MET	3.3
1	A	56	TYR	3.2
1	A	176	ARG	3.2
1	A	209	SER	2.9
4	L	218	CYS	2.9
1	A	166	ARG	2.9
3	K	4	VAL	2.8
3	K	31	ILE	2.8
1	A	54	GLY	2.7
1	A	55	LEU	2.7
1	A	148	ALA	2.7
1	A	161	VAL	2.6
4	L	217	GLU	2.6
1	A	188	GLU	2.6
1	A	164	GLY	2.6
1	A	151	CYS	2.5
1	A	179	SER	2.5
4	L	87	ALA	2.3
3	K	3	GLN	2.3
1	A	191	CYS	2.3
1	A	207	PRO	2.2
1	A	197	TRP	2.2
1	A	194	ASN	2.2
1	A	200	THR	2.1
4	L	45	GLY	2.1
3	K	44	GLY	2.1
3	K	43	PRO	2.1
1	A	174	ARG	2.0

6.2 Non-standard residues in protein, DNA, RNA chains [\(i\)](#)

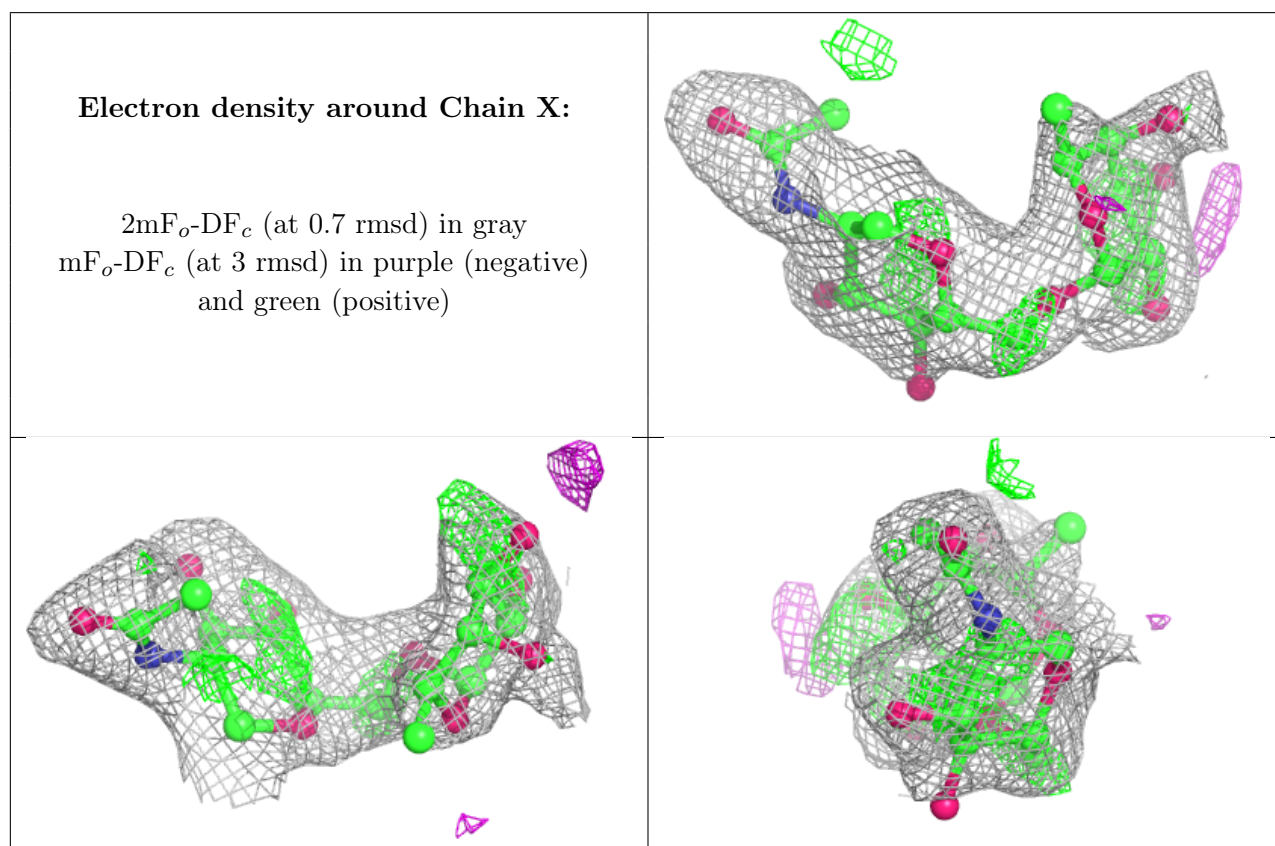
There are no non-standard protein/DNA/RNA residues in this entry.

6.3 Carbohydrates [i](#)

In the following table, the Atoms column lists the number of modelled atoms in the group and the number defined in the chemical component dictionary. The B-factors column lists the minimum, median, 95th percentile and maximum values of B factors of atoms in the group. The column labelled 'Q< 0.9' lists the number of atoms with occupancy less than 0.9.

Mol	Type	Chain	Res	Atoms	RSCC	RSR	B-factors(Å ²)	Q<0.9
5	FUC	X	2	10/11	0.80	0.29	78,133,142,156	0
5	NAG	X	1	14/15	0.89	0.20	70,88,124,141	0

The following is a graphical depiction of the model fit to experimental electron density for oligosaccharide. Each fit is shown from different orientation to approximate a three-dimensional view.



6.4 Ligands [i](#)

In the following table, the Atoms column lists the number of modelled atoms in the group and the number defined in the chemical component dictionary. The B-factors column lists the minimum, median, 95th percentile and maximum values of B factors of atoms in the group. The column labelled 'Q< 0.9' lists the number of atoms with occupancy less than 0.9.

Mol	Type	Chain	Res	Atoms	RSCC	RSR	B-factors(Å ²)	Q<0.9
8	MPD	L	301	8/8	0.85	0.22	57,65,68,69	0

Continued on next page...

Continued from previous page...

Mol	Type	Chain	Res	Atoms	RSCC	RSR	B-factors(\AA^2)	Q<0.9
6	CA	H	301	1/1	0.96	0.18	39,39,39,39	0
7	CL	K	201	1/1	0.97	0.10	68,68,68,68	0

6.5 Other polymers [i](#)

There are no such residues in this entry.