



# wwPDB X-ray Structure Validation Summary Report ⓘ

Aug 7, 2020 – 05:44 PM BST

PDB ID : 2AHX  
Title : Crystal structure of ErbB4/HER4 extracellular domain  
Authors : Bouyain, S.; Longo, P.A.; Li, S.; Ferguson, K.M.; Leahy, D.J.  
Deposited on : 2005-07-28  
Resolution : 2.40 Å(reported)

This is a wwPDB X-ray Structure Validation Summary Report for a publicly released PDB entry.

We welcome your comments at [validation@mail.wwpdb.org](mailto:validation@mail.wwpdb.org)

A user guide is available at

<https://www.wwpdb.org/validation/2017/XrayValidationReportHelp>

with specific help available everywhere you see the ⓘ symbol.

---

The following versions of software and data (see [references ⓘ](#)) were used in the production of this report:

MolProbity : 4.02b-467  
Mogul : 1.8.5 (274361), CSD as541be (2020)  
Xtriage (Phenix) : 1.13  
EDS : 2.13.1  
Percentile statistics : 20191225.v01 (using entries in the PDB archive December 25th 2019)  
Refmac : 5.8.0158  
CCP4 : 7.0.044 (Gargrove)  
Ideal geometry (proteins) : Engh & Huber (2001)  
Ideal geometry (DNA, RNA) : Parkinson et al. (1996)  
Validation Pipeline (wwPDB-VP) : 2.13.1

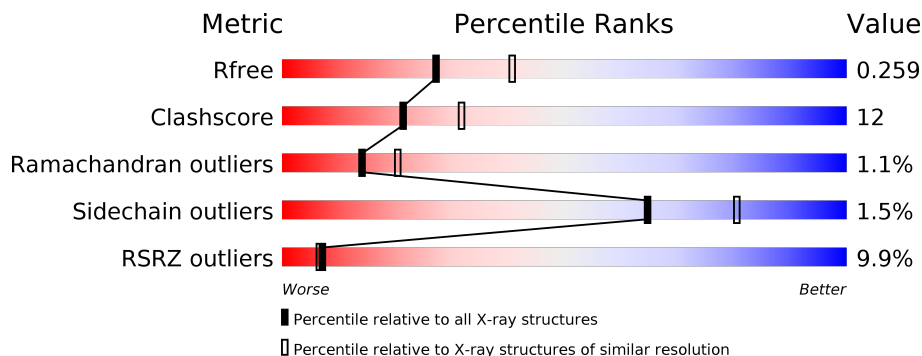
# 1 Overall quality at a glance

The following experimental techniques were used to determine the structure:

*X-RAY DIFFRACTION*

The reported resolution of this entry is 2.40 Å.

Percentile scores (ranging between 0-100) for global validation metrics of the entry are shown in the following graphic. The table shows the number of entries on which the scores are based.



Metric	Whole archive (#Entries)	Similar resolution (#Entries, resolution range(Å))
$R_{free}$	130704	3907 (2.40-2.40)
Clashscore	141614	4398 (2.40-2.40)
Ramachandran outliers	138981	4318 (2.40-2.40)
Sidechain outliers	138945	4319 (2.40-2.40)
RSRZ outliers	127900	3811 (2.40-2.40)

The table below summarises the geometric issues observed across the polymeric chains and their fit to the electron density. The red, orange, yellow and green segments on the lower bar indicate the fraction of residues that contain outliers for  $\geq 3$ , 2, 1 and 0 types of geometric quality criteria respectively. A grey segment represents the fraction of residues that are not modelled. The numeric value for each fraction is indicated below the corresponding segment, with a dot representing fractions  $\leq 5\%$ . The upper red bar (where present) indicates the fraction of residues that have poor fit to the electron density. The numeric value is given above the bar.

Mol	Chain	Length	Quality of chain
1	A	617	
1	B	617	

The following table lists non-polymeric compounds, carbohydrate monomers and non-standard residues in protein, DNA, RNA chains that are outliers for geometric or electron-density-fit criteria:

Mol	Type	Chain	Res	Chirality	Geometry	Clashes	Electron density
2	NAG	A	1004	X	-	-	-
2	NAG	A	1006	X	-	-	-
2	NAG	A	1007	X	-	-	X
2	NAG	B	1010	X	-	-	-

## 2 Entry composition [i](#)

There are 5 unique types of molecules in this entry. The entry contains 9940 atoms, of which 0 are hydrogens and 0 are deuteriums.

In the tables below, the ZeroOcc column contains the number of atoms modelled with zero occupancy, the AltConf column contains the number of residues with at least one atom in alternate conformation and the Trace column contains the number of residues modelled with at most 2 atoms.

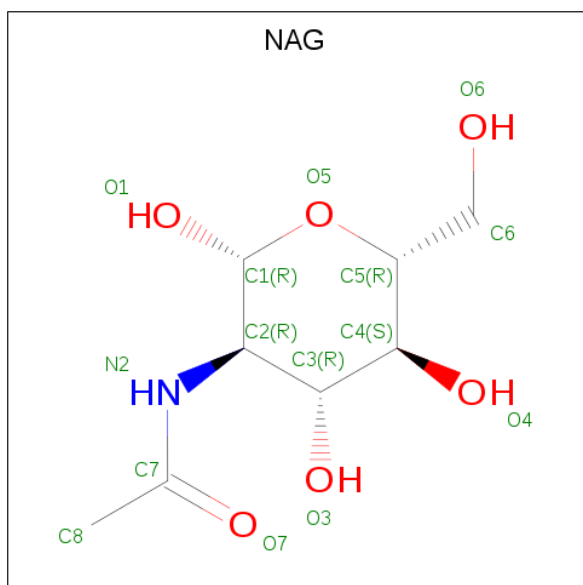
- Molecule 1 is a protein called Receptor tyrosine-protein kinase erbB-4.

Mol	Chain	Residues	Atoms					ZeroOcc	AltConf	Trace
			Total	C	N	O	S			
1	A	611	Total 4767	C 2961	N 831	O 917	S 58	0	0	0
1	B	615	Total 4795	C 2975	N 837	O 925	S 58	0	0	0

There are 4 discrepancies between the modelled and reference sequences:

Chain	Residue	Modelled	Actual	Comment	Reference
A	0	ARG	-	cloning artifact	UNP Q15303
A	524	ASP	GLY	engineered mutation	UNP Q15303
B	0	ARG	-	cloning artifact	UNP Q15303
B	524	ASP	GLY	engineered mutation	UNP Q15303

- Molecule 2 is 2-acetamido-2-deoxy-beta-D-glucopyranose (three-letter code: NAG) (formula:  $C_8H_{15}NO_6$ ).



Mol	Chain	Residues	Atoms				ZeroOcc	AltConf
2	A	1	Total	C	N	O	0	0
			14	8	1	5		
2	A	1	Total	C	N	O	0	0
			14	8	1	5		
2	A	1	Total	C	N	O	0	0
			14	8	1	5		
2	A	1	Total	C	N	O	0	0
			14	8	1	5		
2	A	1	Total	C	N	O	0	0
			14	8	1	5		
2	A	1	Total	C	N	O	0	0
			14	8	1	5		
2	A	1	Total	C	N	O	0	0
			14	8	1	5		
2	B	1	Total	C	N	O	0	0
			14	8	1	5		
2	B	1	Total	C	N	O	0	0
			14	8	1	5		
2	B	1	Total	C	N	O	0	0
			14	8	1	5		
2	B	1	Total	C	N	O	0	0
			14	8	1	5		
2	B	1	Total	C	N	O	0	0
			14	8	1	5		
2	B	1	Total	C	N	O	0	0
			14	8	1	5		

- Molecule 3 is SULFATE ION (three-letter code: SO4) (formula: O<sub>4</sub>S).



Mol	Chain	Residues	Atoms	ZeroOcc	AltConf
3	A	1	Total O S 5 4 1	0	0
3	B	1	Total O S 5 4 1	0	0
3	B	1	Total O S 5 4 1	0	0

- Molecule 4 is YTTRIUM (III) ION (three-letter code: YT3) (formula: Y).

Mol	Chain	Residues	Atoms	ZeroOcc	AltConf
4	B	1	Total Y 1 1	0	0

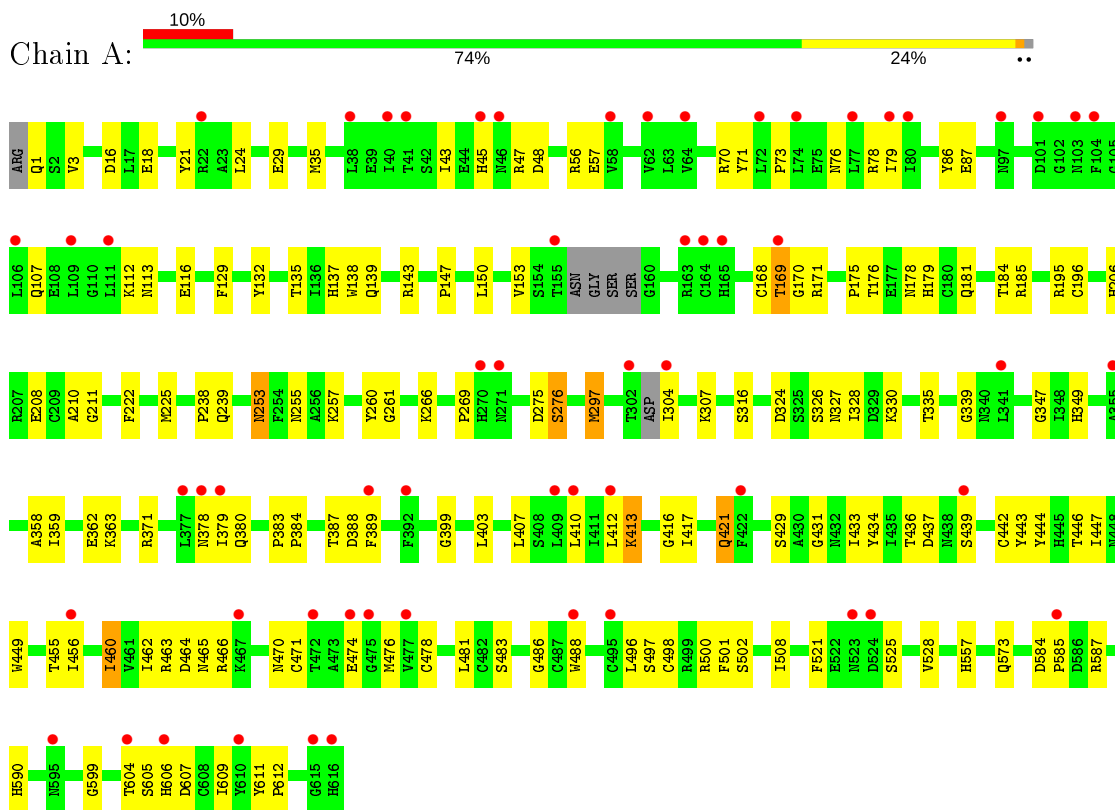
- Molecule 5 is water.

Mol	Chain	Residues	Atoms	ZeroOcc	AltConf
5	A	56	Total O 56 56	0	0
5	B	82	Total O 82 82	0	0

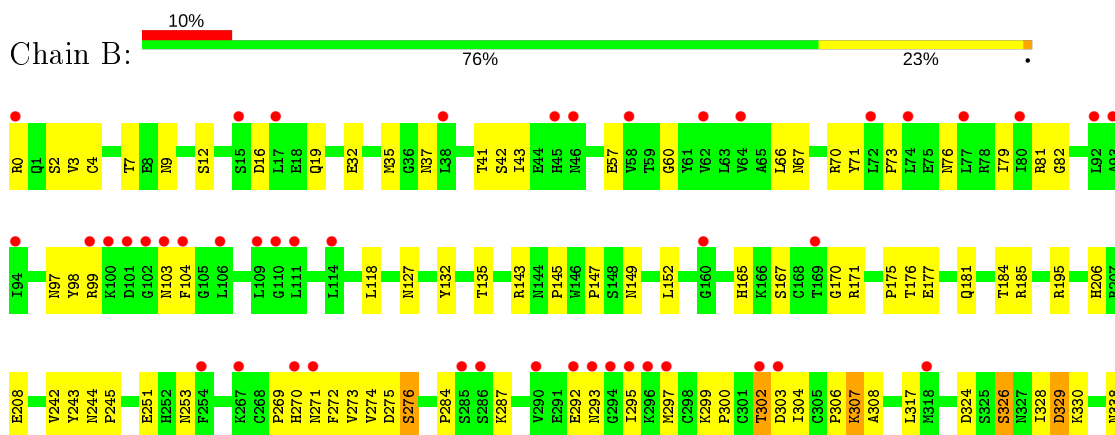
### 3 Residue-property plots [i](#)

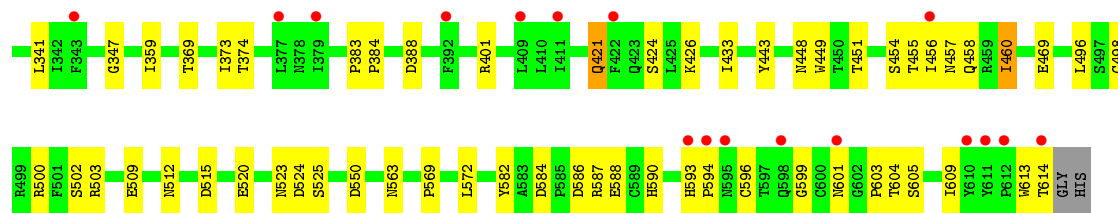
These plots are drawn for all protein, RNA, DNA and oligosaccharide chains in the entry. The first graphic for a chain summarises the proportions of the various outlier classes displayed in the second graphic. The second graphic shows the sequence view annotated by issues in geometry and electron density. Residues are color-coded according to the number of geometric quality criteria for which they contain at least one outlier: green = 0, yellow = 1, orange = 2 and red = 3 or more. A red dot above a residue indicates a poor fit to the electron density ( $RSRZ > 2$ ). Stretches of 2 or more consecutive residues without any outlier are shown as a green connector. Residues present in the sample, but not in the model, are shown in grey.

- Molecule 1: Receptor tyrosine-protein kinase erbB-4



- Molecule 1: Receptor tyrosine-protein kinase erbB-4







## 4 Data and refinement statistics

Property	Value	Source
Space group	C 2 2 21	Depositor
Cell constants a, b, c, $\alpha$ , $\beta$ , $\gamma$	76.96Å 203.09Å 261.32Å 90.00° 90.00° 90.00°	Depositor
Resolution (Å)	29.88 – 2.40 29.86 – 2.40	Depositor EDS
% Data completeness (in resolution range)	96.4 (29.88-2.40) 96.2 (29.86-2.40)	Depositor EDS
$R_{merge}$	0.10	Depositor
$R_{sym}$	(Not available)	Depositor
$\langle I/\sigma(I) \rangle$ <sup>1</sup>	1.51 (at 2.39Å)	Xtrriage
Refinement program	REFMAC 5.0	Depositor
R, $R_{free}$	0.235 , 0.265 0.227 , 0.259	Depositor DCC
$R_{free}$ test set	4047 reflections (5.03%)	wwPDB-VP
Wilson B-factor (Å <sup>2</sup> )	45.1	Xtrriage
Anisotropy	0.426	Xtrriage
Bulk solvent $k_{sol}$ (e/Å <sup>3</sup> ), $B_{sol}$ (Å <sup>2</sup> )	0.33 , 39.7	EDS
L-test for twinning <sup>2</sup>	$\langle  L  \rangle = 0.47$ , $\langle L^2 \rangle = 0.30$	Xtrriage
Estimated twinning fraction	No twinning to report.	Xtrriage
$F_o, F_c$ correlation	0.93	EDS
Total number of atoms	9940	wwPDB-VP
Average B, all atoms (Å <sup>2</sup> )	28.0	wwPDB-VP

Xtrriage's analysis on translational NCS is as follows: *The largest off-origin peak in the Patterson function is 2.88% of the height of the origin peak. No significant pseudotranslation is detected.*

<sup>1</sup>Intensities estimated from amplitudes.

<sup>2</sup>Theoretical values of  $\langle |L| \rangle$ ,  $\langle L^2 \rangle$  for acentric reflections are 0.5, 0.333 respectively for untwinned datasets, and 0.375, 0.2 for perfectly twinned datasets.

## 5 Model quality [i](#)

### 5.1 Standard geometry [i](#)

Bond lengths and bond angles in the following residue types are not validated in this section: SO4, YT3, NAG

The Z score for a bond length (or angle) is the number of standard deviations the observed value is removed from the expected value. A bond length (or angle) with  $|Z| > 5$  is considered an outlier worth inspection. RMSZ is the root-mean-square of all Z scores of the bond lengths (or angles).

Mol	Chain	Bond lengths		Bond angles	
		RMSZ	# Z  >5	RMSZ	# Z  >5
1	A	0.40	0/4872	0.67	0/6601
1	B	0.42	0/4901	0.69	1/6644 (0.0%)
All	All	0.41	0/9773	0.68	1/13245 (0.0%)

There are no bond length outliers.

All (1) bond angle outliers are listed below:

Mol	Chain	Res	Type	Atoms	Z	Observed(°)	Ideal(°)
1	B	302	THR	C-N-CA	-6.73	104.88	121.70

There are no chirality outliers.

There are no planarity outliers.

### 5.2 Too-close contacts [i](#)

In the following table, the Non-H and H(model) columns list the number of non-hydrogen atoms and hydrogen atoms in the chain respectively. The H(added) column lists the number of hydrogen atoms added and optimized by MolProbity. The Clashes column lists the number of clashes within the asymmetric unit, whereas Symm-Clashes lists symmetry related clashes.

Mol	Chain	Non-H	H(model)	H(added)	Clashes	Symm-Clashes
1	A	4767	0	4496	127	0
1	B	4795	0	4526	102	0
2	A	112	0	104	8	0
2	B	112	0	104	4	0
3	A	5	0	0	0	0
3	B	10	0	0	0	0
4	B	1	0	0	1	0
5	A	56	0	0	3	0

*Continued on next page...*

*Continued from previous page...*

Mol	Chain	Non-H	H(model)	H(added)	Clashes	Symm-Clashes
5	B	82	0	0	2	0
All	All	9940	0	9230	229	0

The all-atom clashscore is defined as the number of clashes found per 1000 atoms (including hydrogen atoms). The all-atom clashscore for this structure is 12.

The worst 5 of 229 close contacts within the same asymmetric unit are listed below, sorted by their clash magnitude.

Atom-1	Atom-2	Interatomic distance (Å)	Clash overlap (Å)
1:A:407:LEU:HD13	1:A:410:LEU:HD21	1.29	1.11
1:A:78:ARG:HD3	1:A:222:PHE:HB3	1.46	0.94
1:A:470:ASN:OD1	2:A:1007:NAG:H3	1.66	0.94
1:A:446:THR:HG21	1:A:478:CYS:SG	2.07	0.94
1:B:152:LEU:HD11	2:B:1011:NAG:H83	1.54	0.90

There are no symmetry-related clashes.

## 5.3 Torsion angles [i](#)

### 5.3.1 Protein backbone [i](#)

In the following table, the Percentiles column shows the percent Ramachandran outliers of the chain as a percentile score with respect to all X-ray entries followed by that with respect to entries of similar resolution.

The Analysed column shows the number of residues for which the backbone conformation was analysed, and the total number of residues.

Mol	Chain	Analysed	Favoured	Allowed	Outliers	Percentiles
1	A	605/617 (98%)	545 (90%)	53 (9%)	7 (1%)	13 19
1	B	613/617 (99%)	564 (92%)	42 (7%)	7 (1%)	14 20
All	All	1218/1234 (99%)	1109 (91%)	95 (8%)	14 (1%)	14 20

5 of 14 Ramachandran outliers are listed below:

Mol	Chain	Res	Type
1	A	29	GLU
1	A	169	THR
1	B	307	LYS

*Continued on next page...*

*Continued from previous page...*

Mol	Chain	Res	Type
1	A	316	SER
1	A	413	LYS

### 5.3.2 Protein sidechains [i](#)

In the following table, the Percentiles column shows the percent sidechain outliers of the chain as a percentile score with respect to all X-ray entries followed by that with respect to entries of similar resolution.

The Analysed column shows the number of residues for which the sidechain conformation was analysed, and the total number of residues.

Mol	Chain	Analysed	Rotameric	Outliers	Percentiles	
1	A	541/546 (99%)	535 (99%)	6 (1%)	73	87
1	B	545/546 (100%)	535 (98%)	10 (2%)	59	76
All	All	1086/1092 (100%)	1070 (98%)	16 (2%)	65	80

5 of 16 residues with a non-rotameric sidechain are listed below:

Mol	Chain	Res	Type
1	B	104	PHE
1	B	145	PRO
1	B	421	GLN
1	B	70	ARG
1	B	460	ILE

Some sidechains can be flipped to improve hydrogen bonding and reduce clashes. 5 of 25 such sidechains are listed below:

Mol	Chain	Res	Type
1	A	590	HIS
1	B	126	GLN
1	B	595	ASN
1	B	103	ASN
1	B	127	ASN

### 5.3.3 RNA [i](#)

There are no RNA molecules in this entry.

## 5.4 Non-standard residues in protein, DNA, RNA chains [i](#)

There are no non-standard protein/DNA/RNA residues in this entry.

## 5.5 Carbohydrates [i](#)

There are no monosaccharides in this entry.

## 5.6 Ligand geometry [i](#)

Of 20 ligands modelled in this entry, 1 is monoatomic - leaving 19 for Mogul analysis.

In the following table, the Counts columns list the number of bonds (or angles) for which Mogul statistics could be retrieved, the number of bonds (or angles) that are observed in the model and the number of bonds (or angles) that are defined in the Chemical Component Dictionary. The Link column lists molecule types, if any, to which the group is linked. The Z score for a bond length (or angle) is the number of standard deviations the observed value is removed from the expected value. A bond length (or angle) with  $|Z| > 2$  is considered an outlier worth inspection. RMSZ is the root-mean-square of all Z scores of the bond lengths (or angles).

Mol	Type	Chain	Res	Link	Bond lengths			Bond angles		
					Counts	RMSZ	# Z  > 2	Counts	RMSZ	# Z  > 2
3	SO4	B	2002	-	4,4,4	0.27	0	6,6,6	0.09	0
2	NAG	B	1011	1	14,14,15	0.47	0	17,19,21	0.83	1 (5%)
2	NAG	B	1016	1	14,14,15	0.56	0	17,19,21	0.84	1 (5%)
2	NAG	A	1005	1	14,14,15	0.69	0	17,19,21	0.63	0
2	NAG	B	1014	1	14,14,15	0.55	0	17,19,21	0.69	0
2	NAG	A	1001	1	14,14,15	0.69	1 (7%)	17,19,21	1.04	2 (11%)
2	NAG	A	1006	1	14,14,15	0.84	0	17,19,21	0.75	0
2	NAG	A	1008	1	14,14,15	0.69	1 (7%)	17,19,21	0.69	0
2	NAG	B	1010	1	14,14,15	0.70	1 (7%)	17,19,21	1.05	2 (11%)
2	NAG	A	1004	1	14,14,15	0.49	0	17,19,21	0.77	1 (5%)
2	NAG	B	1013	1	14,14,15	0.67	0	17,19,21	1.00	1 (5%)
3	SO4	B	2003	-	4,4,4	0.26	0	6,6,6	0.09	0
2	NAG	B	1012	1	14,14,15	0.67	0	17,19,21	0.76	1 (5%)
2	NAG	A	1007	1	14,14,15	0.81	1 (7%)	17,19,21	0.64	0
3	SO4	A	2001	-	4,4,4	0.26	0	6,6,6	0.08	0
2	NAG	B	1009	1	14,14,15	0.52	0	17,19,21	0.95	1 (5%)
2	NAG	A	1003	1	14,14,15	0.51	0	17,19,21	0.99	1 (5%)
2	NAG	B	1015	1	14,14,15	0.55	0	17,19,21	0.94	1 (5%)
2	NAG	A	1002	1	14,14,15	0.44	0	17,19,21	0.91	1 (5%)

In the following table, the Chirals column lists the number of chiral outliers, the number of chiral centers analysed, the number of these observed in the model and the number defined in the Chemical Component Dictionary. Similar counts are reported in the Torsion and Rings columns. '-' means no outliers of that kind were identified.

Mol	Type	Chain	Res	Link	Chirals	Torsions	Rings
2	NAG	B	1011	1	-	2/6/23/26	0/1/1/1
2	NAG	B	1016	1	-	2/6/23/26	0/1/1/1
2	NAG	A	1005	1	-	3/6/23/26	0/1/1/1
2	NAG	B	1014	1	-	3/6/23/26	0/1/1/1
2	NAG	A	1001	1	-	0/6/23/26	0/1/1/1
2	NAG	A	1006	1	1/1/5/7	4/6/23/26	0/1/1/1
2	NAG	B	1010	1	1/1/5/7	4/6/23/26	0/1/1/1
2	NAG	A	1008	1	-	2/6/23/26	0/1/1/1
2	NAG	A	1004	1	1/1/5/7	2/6/23/26	0/1/1/1
2	NAG	B	1013	1	-	4/6/23/26	0/1/1/1
2	NAG	B	1012	1	-	4/6/23/26	0/1/1/1
2	NAG	A	1007	1	1/1/5/7	4/6/23/26	0/1/1/1
2	NAG	B	1009	1	-	2/6/23/26	0/1/1/1
2	NAG	A	1003	1	-	2/6/23/26	0/1/1/1
2	NAG	B	1015	1	-	3/6/23/26	0/1/1/1
2	NAG	A	1002	1	-	2/6/23/26	0/1/1/1

All (4) bond length outliers are listed below:

Mol	Chain	Res	Type	Atoms	Z	Observed(Å)	Ideal(Å)
2	A	1007	NAG	C1-C2	2.25	1.55	1.52
2	B	1010	NAG	C1-C2	2.19	1.55	1.52
2	A	1008	NAG	C1-C2	2.13	1.55	1.52
2	A	1001	NAG	C1-C2	2.06	1.55	1.52

The worst 5 of 13 bond angle outliers are listed below:

Mol	Chain	Res	Type	Atoms	Z	Observed(°)	Ideal(°)
2	B	1009	NAG	C1-C2-N2	-3.14	105.13	110.49
2	B	1013	NAG	C2-N2-C7	-2.82	118.89	122.90
2	A	1002	NAG	C2-N2-C7	-2.77	118.95	122.90
2	A	1003	NAG	C2-N2-C7	-2.59	119.22	122.90
2	A	1001	NAG	C2-N2-C7	-2.48	119.37	122.90

All (4) chirality outliers are listed below:

Mol	Chain	Res	Type	Atom
2	A	1006	NAG	C1
2	B	1010	NAG	C1
2	A	1004	NAG	C1
2	A	1007	NAG	C1

5 of 43 torsion outliers are listed below:

Mol	Chain	Res	Type	Atoms
2	A	1005	NAG	C8-C7-N2-C2
2	A	1005	NAG	O7-C7-N2-C2
2	B	1014	NAG	C3-C2-N2-C7
2	B	1014	NAG	C8-C7-N2-C2
2	B	1014	NAG	O7-C7-N2-C2

There are no ring outliers.

5 monomers are involved in 12 short contacts:

Mol	Chain	Res	Type	Clashes	Symm-Clashes
2	B	1011	NAG	1	0
2	B	1014	NAG	2	0
2	A	1001	NAG	3	0
2	A	1007	NAG	5	0
2	B	1009	NAG	1	0

## 5.7 Other polymers [i](#)

There are no such residues in this entry.

## 5.8 Polymer linkage issues [i](#)

There are no chain breaks in this entry.

## 6 Fit of model and data [i](#)

### 6.1 Protein, DNA and RNA chains [i](#)

In the following table, the column labelled '#RSRZ> 2' contains the number (and percentage) of RSRZ outliers, followed by percent RSRZ outliers for the chain as percentile scores relative to all X-ray entries and entries of similar resolution. The OWAB column contains the minimum, median, 95<sup>th</sup> percentile and maximum values of the occupancy-weighted average B-factor per residue. The column labelled 'Q< 0.9' lists the number of (and percentage) of residues with an average occupancy less than 0.9.

Mol	Chain	Analysed	<RSRZ>	#RSRZ>2	OWAB(Å <sup>2</sup> )	Q<0.9
1	A	611/617 (99%)	0.54	59 (9%) <b>7</b> <b>7</b>	8, 26, 40, 53	0
1	B	615/617 (99%)	0.52	62 (10%) <b>7</b> <b>6</b>	11, 26, 43, 72	0
All	All	1226/1234 (99%)	0.53	121 (9%) <b>7</b> <b>6</b>	8, 26, 41, 72	0

The worst 5 of 121 RSRZ outliers are listed below:

Mol	Chain	Res	Type	RSRZ
1	A	101	ASP	6.7
1	B	0	ARG	6.3
1	B	254	PHE	4.7
1	A	616	HIS	4.7
1	A	615	GLY	4.5

### 6.2 Non-standard residues in protein, DNA, RNA chains [i](#)

There are no non-standard protein/DNA/RNA residues in this entry.

### 6.3 Carbohydrates [i](#)

There are no monosaccharides in this entry.

### 6.4 Ligands [i](#)

In the following table, the Atoms column lists the number of modelled atoms in the group and the number defined in the chemical component dictionary. The B-factors column lists the minimum, median, 95<sup>th</sup> percentile and maximum values of B factors of atoms in the group. The column labelled 'Q< 0.9' lists the number of atoms with occupancy less than 0.9.



Mol	Type	Chain	Res	Atoms	RSCC	RSR	B-factors( $\text{\AA}^2$ )	Q<0.9
2	NAG	A	1007	14/15	0.64	0.43	61,66,67,68	0
2	NAG	A	1006	14/15	0.80	0.35	44,48,52,52	0
2	NAG	B	1013	14/15	0.83	0.26	33,35,42,44	0
2	NAG	B	1015	14/15	0.84	0.19	24,37,50,52	0
2	NAG	A	1005	14/15	0.86	0.45	53,59,68,68	0
2	NAG	B	1014	14/15	0.87	0.23	46,54,61,64	0
2	NAG	B	1012	14/15	0.90	0.25	24,41,49,53	0
2	NAG	A	1004	14/15	0.90	0.17	48,56,59,61	0
2	NAG	A	1001	14/15	0.90	0.15	22,28,46,54	0
2	NAG	A	1003	14/15	0.91	0.23	29,34,46,49	0
2	NAG	B	1010	14/15	0.91	0.13	26,36,43,54	0
2	NAG	B	1011	14/15	0.93	0.30	35,48,55,58	0
3	SO4	B	2003	5/5	0.93	0.22	57,58,70,71	0
2	NAG	A	1008	14/15	0.93	0.20	34,44,55,56	0
2	NAG	B	1016	14/15	0.94	0.20	37,42,45,47	0
2	NAG	B	1009	14/15	0.94	0.16	16,25,39,45	0
2	NAG	A	1002	14/15	0.95	0.16	18,23,25,31	0
3	SO4	B	2002	5/5	0.96	0.21	73,74,76,76	0
4	YT3	B	3001	1/1	0.97	0.12	38,38,38,38	1
3	SO4	A	2001	5/5	0.97	0.13	57,58,66,71	0

## 6.5 Other polymers [i](#)

There are no such residues in this entry.