



wwPDB X-ray Structure Validation Summary Report ⓘ

Oct 22, 2023 – 12:28 PM EDT

PDB ID : 3AMZ
Title : Bovine Xanthine Oxidoreductase urate bound form
Authors : Okamoto, K.; Eger, B.T.; Pai, E.F.; Nishino, T.
Deposited on : 2010-08-27
Resolution : 2.10 Å(reported)

This is a wwPDB X-ray Structure Validation Summary Report for a publicly released PDB entry.

We welcome your comments at validation@mail.wwpdb.org

A user guide is available at

<https://www.wwpdb.org/validation/2017/XrayValidationReportHelp>

with specific help available everywhere you see the ⓘ symbol.

The types of validation reports are described at

<https://www.wwpdb.org/validation/2017/FAQs#types>.

The following versions of software and data (see [references ⓘ](#)) were used in the production of this report:

MolProbity : 4.02b-467
Mogul : 1.8.5 (274361), CSD as541be (2020)
Xtriage (Phenix) : 1.13
EDS : 2.36
buster-report : 1.1.7 (2018)
Percentile statistics : 20191225.v01 (using entries in the PDB archive December 25th 2019)
Refmac : 5.8.0158
CCP4 : 7.0.044 (Gargrove)
Ideal geometry (proteins) : Engh & Huber (2001)
Ideal geometry (DNA, RNA) : Parkinson et al. (1996)
Validation Pipeline (wwPDB-VP) : 2.36

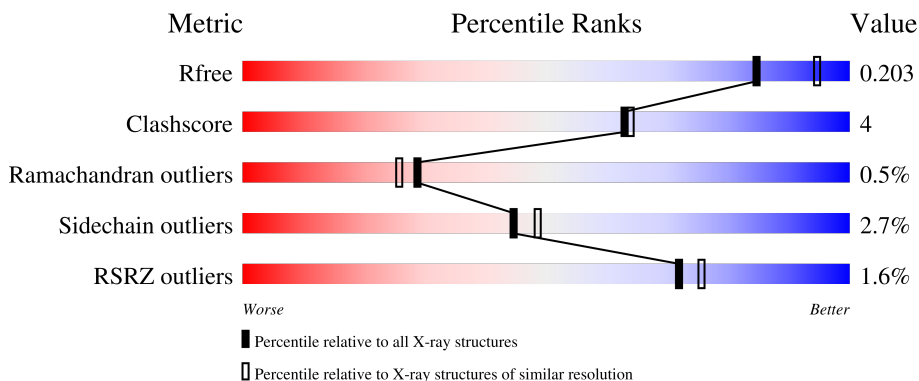
1 Overall quality at a glance

The following experimental techniques were used to determine the structure:

X-RAY DIFFRACTION

The reported resolution of this entry is 2.10 Å.

Percentile scores (ranging between 0-100) for global validation metrics of the entry are shown in the following graphic. The table shows the number of entries on which the scores are based.



Metric	Whole archive (#Entries)	Similar resolution (#Entries, resolution range(Å))
R_{free}	130704	5197 (2.10-2.10)
Clashscore	141614	5710 (2.10-2.10)
Ramachandran outliers	138981	5647 (2.10-2.10)
Sidechain outliers	138945	5648 (2.10-2.10)
RSRZ outliers	127900	5083 (2.10-2.10)

The table below summarises the geometric issues observed across the polymeric chains and their fit to the electron density. The red, orange, yellow and green segments of the lower bar indicate the fraction of residues that contain outliers for ≥ 3 , 2, 1 and 0 types of geometric quality criteria respectively. A grey segment represents the fraction of residues that are not modelled. The numeric value for each fraction is indicated below the corresponding segment, with a dot representing fractions $\leq 5\%$. The upper red bar (where present) indicates the fraction of residues that have poor fit to the electron density. The numeric value is given above the bar.

Mol	Chain	Length	Quality of chain
1	A	1332	 2% 86% 9% ..
1	B	1332	 % 87% 9% ..

The following table lists non-polymeric compounds, carbohydrate monomers and non-standard residues in protein, DNA, RNA chains that are outliers for geometric or electron-density-fit criteria:

Mol	Type	Chain	Res	Chirality	Geometry	Clashes	Electron density
9	MOS	A	1338	-	-	X	-

2 Entry composition [i](#)

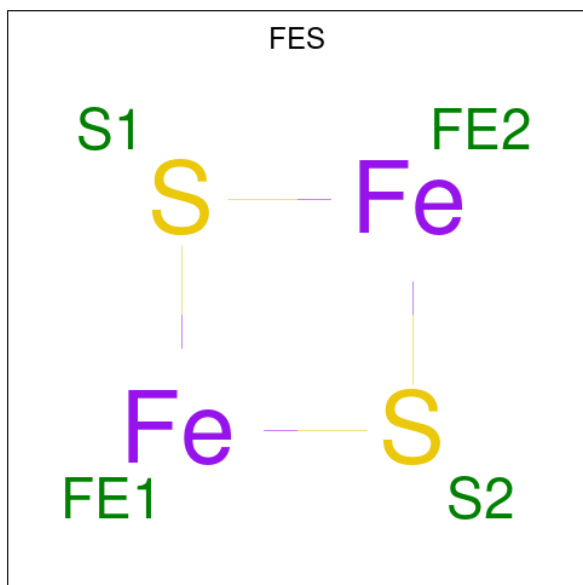
There are 11 unique types of molecules in this entry. The entry contains 22382 atoms, of which 0 are hydrogens and 0 are deuteriums.

In the tables below, the ZeroOcc column contains the number of atoms modelled with zero occupancy, the AltConf column contains the number of residues with at least one atom in alternate conformation and the Trace column contains the number of residues modelled with at most 2 atoms.

- Molecule 1 is a protein called Xanthine dehydrogenase/oxidase.

Mol	Chain	Residues	Atoms					ZeroOcc	AltConf	Trace
			Total	C	N	O	S			
1	A	1291	Total 10024	C 6374	N 1718	O 1872	S 60	0	0	0
1	B	1289	Total 10013	C 6368	N 1716	O 1869	S 60	0	0	0

- Molecule 2 is FE2/S2 (INORGANIC) CLUSTER (three-letter code: FES) (formula: Fe₂S₂).

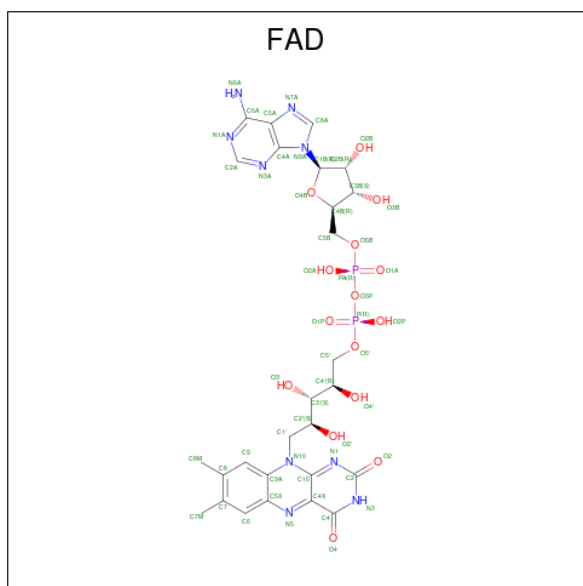


Mol	Chain	Residues	Atoms			ZeroOcc	AltConf
			Total	Fe	S		
2	A	1	Total 4	Fe 2	S 2	0	0
2	A	1	Total 4	Fe 2	S 2	0	0
2	B	1	Total 4	Fe 2	S 2	0	0
2	B	1	Total 4	Fe 2	S 2	0	0

- Molecule 3 is CALCIUM ION (three-letter code: CA) (formula: Ca).

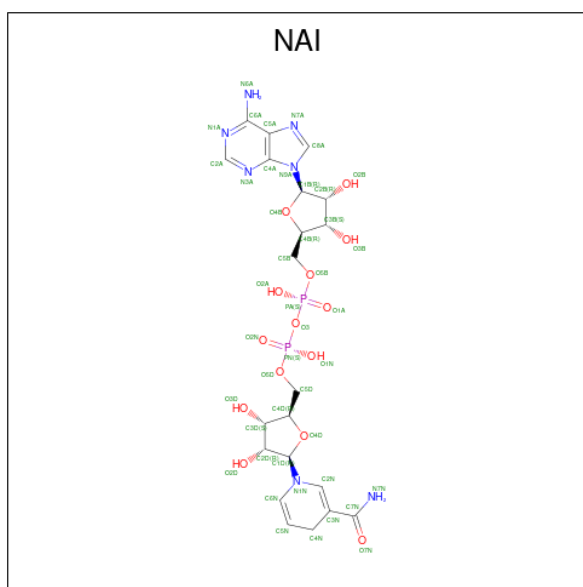
Mol	Chain	Residues	Atoms	ZeroOcc	AltConf
3	A	1	Total Ca 1 1	0	0
3	B	1	Total Ca 1 1	0	0

- Molecule 4 is FLAVIN-ADENINE DINUCLEOTIDE (three-letter code: FAD) (formula: C₂₇H₃₃N₉O₁₅P₂).



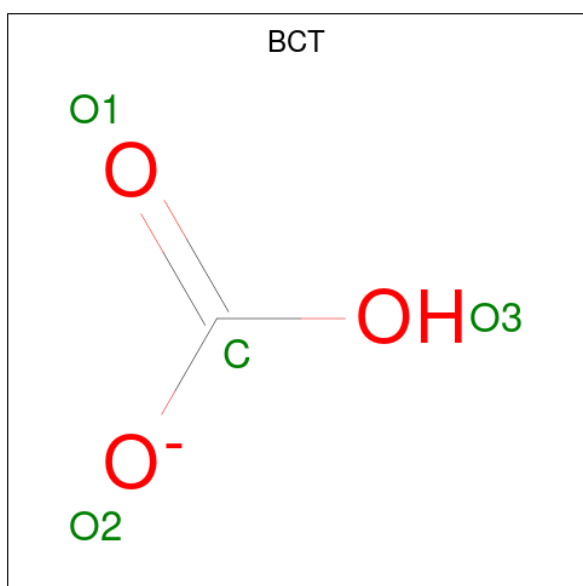
Mol	Chain	Residues	Atoms	ZeroOcc	AltConf
4	A	1	Total C N O P 53 27 9 15 2	0	0
4	B	1	Total C N O P 53 27 9 15 2	0	0

- Molecule 5 is 1,4-DIHYDRONICOTINAMIDE ADENINE DINUCLEOTIDE (three-letter code: NAI) (formula: C₂₁H₂₉N₇O₁₄P₂).



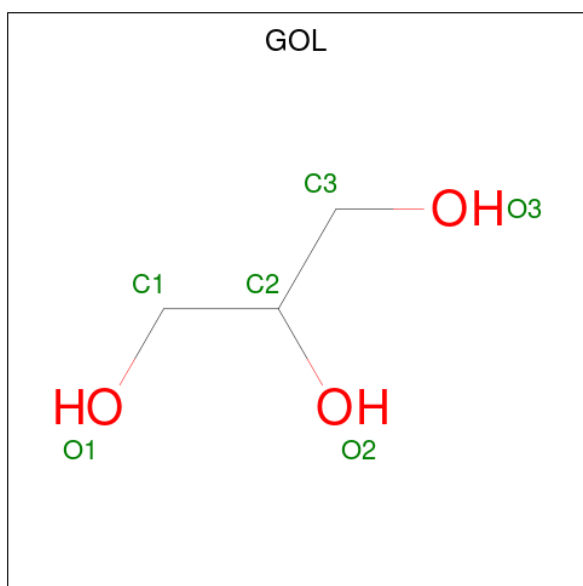
Mol	Chain	Residues	Atoms				ZeroOcc	AltConf	
			Total	C	N	O			P
5	A	1	44	21	7	14	2	0	0
5	B	1	44	21	7	14	2	0	0

- Molecule 6 is BICARBONATE ION (three-letter code: BCT) (formula: CHO_3).



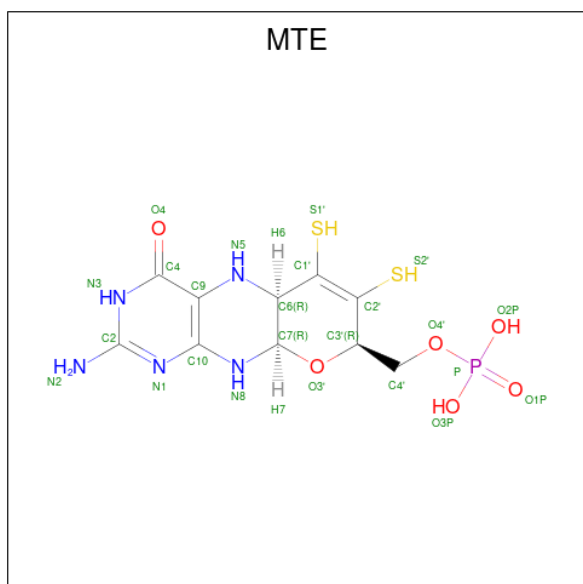
Mol	Chain	Residues	Atoms		ZeroOcc	AltConf
			Total	C O		
6	A	1	4	1 3	0	0
6	B	1	4	1 3	0	0

- Molecule 7 is GLYCEROL (three-letter code: GOL) (formula: $C_3H_8O_3$).



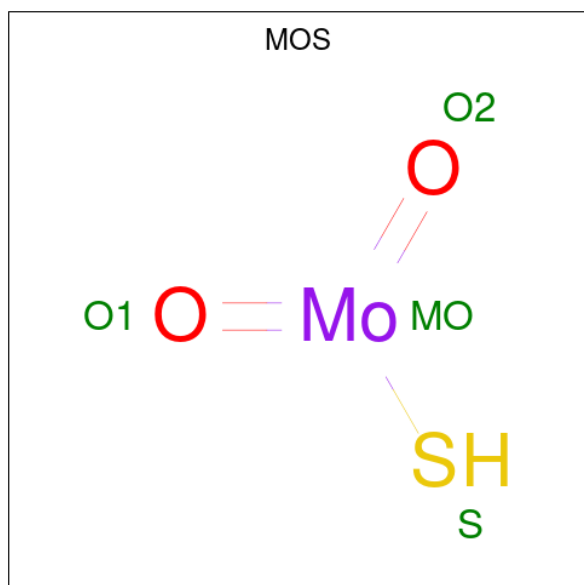
Mol	Chain	Residues	Atoms	ZeroOcc	AltConf
7	A	1	Total C O 6 3 3	0	0
7	A	1	Total C O 6 3 3	0	0
7	B	1	Total C O 6 3 3	0	0

- Molecule 8 is PHOSPHONIC ACIDMONO-(2-AMINO-5,6-DIMERCAPTO-4-OXO-3,7,8A, 9,10,10A-HEXAHYDRO-4H-8-OXA-1,3,9,10-TETRAAZA-ANTHRACEN-7-YLMETHYL) ESTER (three-letter code: MTE) (formula: $C_{10}H_{14}N_5O_6PS_2$).



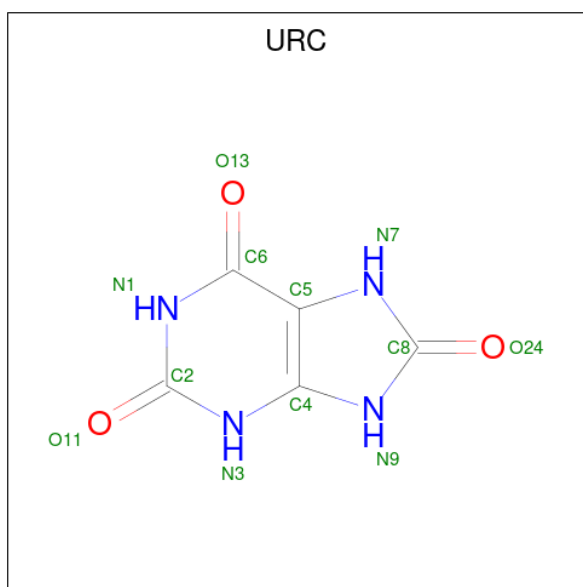
Mol	Chain	Residues	Atoms					ZeroOcc	AltConf	
8	A	1	Total	C	N	O	P	S	0	0
			24	10	5	6	1	2		
8	B	1	Total	C	N	O	P	S	0	0
			24	10	5	6	1	2		

- Molecule 9 is DIOXOTHIO MOLYBDENUM(VI) ION (three-letter code: MOS) (formula: HMoO_2S).



Mol	Chain	Residues	Atoms				ZeroOcc	AltConf
9	A	1	Total	Mo	O	S	0	0
			3	1	1	1		
9	B	1	Total	Mo	O	S	0	0
			3	1	1	1		

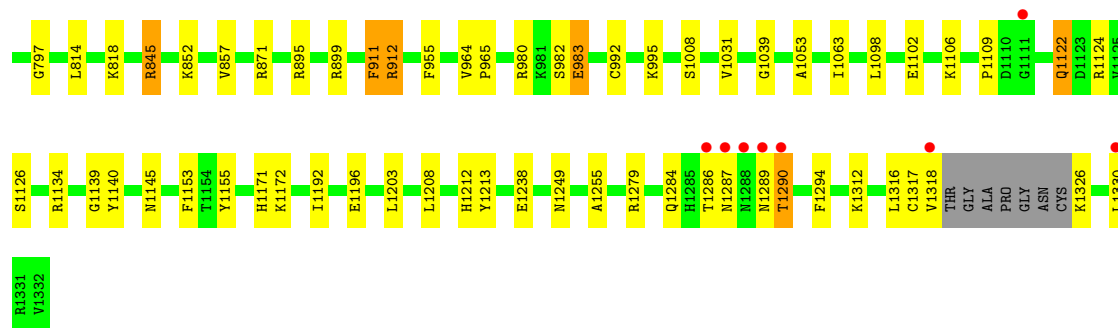
- Molecule 10 is URIC ACID (three-letter code: URC) (formula: $\text{C}_5\text{H}_4\text{N}_4\text{O}_3$).



Mol	Chain	Residues	Atoms				ZeroOcc	AltConf
10	A	1	Total	C	N	O	0	0
			12	5	4	3		
10	B	1	Total	C	N	O	0	0
			12	5	4	3		

- Molecule 11 is water.

Mol	Chain	Residues	Atoms		ZeroOcc	AltConf
11	A	1019	Total	O	0	0
			1019	1019		
11	B	1010	Total	O	0	0
			1010	1010		



4 Data and refinement statistics i

Property	Value	Source
Space group	C 1 2 1	Depositor
Cell constants a, b, c, α , β , γ	168.21Å 124.53Å 148.03Å 90.00° 91.07° 90.00°	Depositor
Resolution (Å)	34.83 – 2.10 34.83 – 2.10	Depositor EDS
% Data completeness (in resolution range)	99.3 (34.83-2.10) 99.4 (34.83-2.10)	Depositor EDS
R_{merge}	(Not available)	Depositor
R_{sym}	(Not available)	Depositor
$\langle I/\sigma(I) \rangle$ ¹	3.43 (at 2.10Å)	Xtrriage
Refinement program	REFMAC 5.5.0109	Depositor
R, R_{free}	0.151 , 0.202 0.152 , 0.203	Depositor DCC
R_{free} test set	8881 reflections (5.01%)	wwPDB-VP
Wilson B-factor (Å ²)	23.3	Xtrriage
Anisotropy	0.089	Xtrriage
Bulk solvent k_{sol} (e/Å ³), B_{sol} (Å ²)	0.36 , 53.9	EDS
L-test for twinning ²	$\langle L \rangle = 0.50$, $\langle L^2 \rangle = 0.34$	Xtrriage
Estimated twinning fraction	0.016 for -h,-k,l	Xtrriage
F_o, F_c correlation	0.97	EDS
Total number of atoms	22382	wwPDB-VP
Average B, all atoms (Å ²)	25.0	wwPDB-VP

Xtrriage's analysis on translational NCS is as follows: *The largest off-origin peak in the Patterson function is 3.05% of the height of the origin peak. No significant pseudotranslation is detected.*

¹Intensities estimated from amplitudes.

²Theoretical values of $\langle |L| \rangle$, $\langle L^2 \rangle$ for acentric reflections are 0.5, 0.333 respectively for untwinned datasets, and 0.375, 0.2 for perfectly twinned datasets.

5 Model quality [i](#)

5.1 Standard geometry [i](#)

Bond lengths and bond angles in the following residue types are not validated in this section: FES, MOS, URC, NAI, MTE, FAD, CA, BCT, GOL

The Z score for a bond length (or angle) is the number of standard deviations the observed value is removed from the expected value. A bond length (or angle) with $|Z| > 5$ is considered an outlier worth inspection. RMSZ is the root-mean-square of all Z scores of the bond lengths (or angles).

Mol	Chain	Bond lengths		Bond angles	
		RMSZ	# Z >5	RMSZ	# Z >5
1	A	1.09	9/10243 (0.1%)	0.96	31/13863 (0.2%)
1	B	1.07	6/10232 (0.1%)	0.94	15/13848 (0.1%)
All	All	1.08	15/20475 (0.1%)	0.95	46/27711 (0.2%)

Chiral center outliers are detected by calculating the chiral volume of a chiral center and verifying if the center is modelled as a planar moiety or with the opposite hand. A planarity outlier is detected by checking planarity of atoms in a peptide group, atoms in a mainchain group or atoms of a sidechain that are expected to be planar.

Mol	Chain	#Chirality outliers	#Planarity outliers
1	A	1	0
1	B	0	1
All	All	1	1

The worst 5 of 15 bond length outliers are listed below:

Mol	Chain	Res	Type	Atoms	Z	Observed(Å)	Ideal(Å)
1	A	992	CYS	CB-SG	-8.12	1.68	1.82
1	A	983	GLU	CG-CD	7.98	1.64	1.51
1	B	992	CYS	CB-SG	-7.79	1.69	1.82
1	B	699	GLU	CG-CD	7.34	1.62	1.51
1	A	412	SER	CB-OG	-6.95	1.33	1.42

The worst 5 of 46 bond angle outliers are listed below:

Mol	Chain	Res	Type	Atoms	Z	Observed(°)	Ideal(°)
1	A	154	ARG	NE-CZ-NH2	-16.98	111.81	120.30
1	B	154	ARG	NE-CZ-NH2	-16.20	112.20	120.30
1	B	154	ARG	NE-CZ-NH1	15.12	127.86	120.30
1	A	97	ARG	NE-CZ-NH2	-14.60	113.00	120.30

Continued on next page...

Continued from previous page...

Mol	Chain	Res	Type	Atoms	Z	Observed(°)	Ideal(°)
1	B	508	ARG	NE-CZ-NH2	-14.59	113.00	120.30

All (1) chirality outliers are listed below:

Mol	Chain	Res	Type	Atom
1	A	1332	VAL	CA

All (1) planarity outliers are listed below:

Mol	Chain	Res	Type	Group
1	B	1286	THR	Peptide

5.2 Too-close contacts [i](#)

In the following table, the Non-H and H(model) columns list the number of non-hydrogen atoms and hydrogen atoms in the chain respectively. The H(added) column lists the number of hydrogen atoms added and optimized by MolProbity. The Clashes column lists the number of clashes within the asymmetric unit, whereas Symm-Clashes lists symmetry-related clashes.

Mol	Chain	Non-H	H(model)	H(added)	Clashes	Symm-Clashes
1	A	10024	0	10027	92	0
1	B	10013	0	10017	76	0
2	A	8	0	0	0	0
2	B	8	0	0	0	0
3	A	1	0	0	0	0
3	B	1	0	0	0	0
4	A	53	0	31	4	0
4	B	53	0	31	6	0
5	A	44	0	25	4	0
5	B	44	0	27	3	0
6	A	4	0	0	0	0
6	B	4	0	0	0	0
7	A	12	0	16	0	0
7	B	6	0	8	1	0
8	A	24	0	10	1	0
8	B	24	0	10	0	0
9	A	3	0	0	2	0
9	B	3	0	0	1	0
10	A	12	0	4	0	0
10	B	12	0	4	0	0
11	A	1019	0	0	18	0

Continued on next page...

Continued from previous page...

Mol	Chain	Non-H	H(model)	H(added)	Clashes	Symm-Clashes
11	B	1010	0	0	19	0
All	All	22382	0	20210	173	0

The all-atom clashscore is defined as the number of clashes found per 1000 atoms (including hydrogen atoms). The all-atom clashscore for this structure is 4.

The worst 5 of 173 close contacts within the same asymmetric unit are listed below, sorted by their clash magnitude.

Atom-1	Atom-2	Interatomic distance (Å)	Clash overlap (Å)
1:A:3:ALA:HB1	1:A:228:ARG:H	1.08	1.09
1:A:60:ARG:O	1:A:61:LEU:HB2	1.47	1.08
1:B:272:ASN:HB3	11:B:1988:HOH:O	1.65	0.95
1:B:217:LEU:O	1:B:220:LYS:HG2	1.70	0.92
1:A:3:ALA:HB1	1:A:228:ARG:N	1.86	0.90

There are no symmetry-related clashes.

5.3 Torsion angles [i](#)

5.3.1 Protein backbone [i](#)

In the following table, the Percentiles column shows the percent Ramachandran outliers of the chain as a percentile score with respect to all X-ray entries followed by that with respect to entries of similar resolution.

The Analysed column shows the number of residues for which the backbone conformation was analysed, and the total number of residues.

Mol	Chain	Analysed	Favoured	Allowed	Outliers	Percentiles
1	A	1283/1332 (96%)	1234 (96%)	42 (3%)	7 (0%)	29 26
1	B	1281/1332 (96%)	1239 (97%)	37 (3%)	5 (0%)	34 32
All	All	2564/2664 (96%)	2473 (96%)	79 (3%)	12 (0%)	29 26

5 of 12 Ramachandran outliers are listed below:

Mol	Chain	Res	Type
1	A	4	ASP
1	A	539	ASP
1	A	61	LEU

Continued on next page...

Continued from previous page...

Mol	Chain	Res	Type
1	A	912	ARG
1	A	1008	SER

5.3.2 Protein sidechains [i](#)

In the following table, the Percentiles column shows the percent sidechain outliers of the chain as a percentile score with respect to all X-ray entries followed by that with respect to entries of similar resolution.

The Analysed column shows the number of residues for which the sidechain conformation was analysed, and the total number of residues.

Mol	Chain	Analysed	Rotameric	Outliers	Percentiles
1	A	1095/1128 (97%)	1061 (97%)	34 (3%)	40 43
1	B	1094/1128 (97%)	1069 (98%)	25 (2%)	50 55
All	All	2189/2256 (97%)	2130 (97%)	59 (3%)	44 48

5 of 59 residues with a non-rotameric sidechain are listed below:

Mol	Chain	Res	Type
1	A	1208	LEU
1	B	1287	ASN
1	B	132	PRO
1	B	1208	LEU
1	B	899	ARG

Sometimes sidechains can be flipped to improve hydrogen bonding and reduce clashes. 5 of 26 such sidechains are listed below:

Mol	Chain	Res	Type
1	B	333	GLN
1	B	565	ASN
1	B	1284	GLN
1	B	473	GLN
1	B	626	GLN

5.3.3 RNA [i](#)

There are no RNA molecules in this entry.

5.4 Non-standard residues in protein, DNA, RNA chains [i](#)

There are no non-standard protein/DNA/RNA residues in this entry.

5.5 Carbohydrates [i](#)

There are no monosaccharides in this entry.

5.6 Ligand geometry [i](#)

Of 21 ligands modelled in this entry, 2 are monoatomic - leaving 19 for Mogul analysis.

In the following table, the Counts columns list the number of bonds (or angles) for which Mogul statistics could be retrieved, the number of bonds (or angles) that are observed in the model and the number of bonds (or angles) that are defined in the Chemical Component Dictionary. The Link column lists molecule types, if any, to which the group is linked. The Z score for a bond length (or angle) is the number of standard deviations the observed value is removed from the expected value. A bond length (or angle) with $|Z| > 2$ is considered an outlier worth inspection. RMSZ is the root-mean-square of all Z scores of the bond lengths (or angles).

Mol	Type	Chain	Res	Link	Bond lengths			Bond angles		
					Counts	RMSZ	# Z > 2	Counts	RMSZ	# Z > 2
2	FES	B	4002	1	0,4,4	-	-	-		
5	NAI	A	1333	-	42,48,48	1.49	6 (14%)	47,73,73	1.77	7 (14%)
6	BCT	A	1334	-	2,3,3	0.73	0	2,3,3	0.24	0
2	FES	A	3001	1	0,4,4	-	-	-		
4	FAD	B	4005	-	53,58,58	1.31	4 (7%)	68,89,89	1.76	16 (23%)
9	MOS	A	1338	10,8	0,2,3	-	-	-		
8	MTE	A	1337	9	21,26,26	1.36	3 (14%)	21,40,40	2.18	11 (52%)
7	GOL	A	1336	-	5,5,5	0.36	0	5,5,5	0.46	0
7	GOL	B	1335	-	5,5,5	0.54	0	5,5,5	0.73	0
4	FAD	A	3005	-	53,58,58	1.25	4 (7%)	68,89,89	1.84	15 (22%)
10	URC	A	1339	9	8,13,13	2.18	2 (25%)	5,19,19	8.71	5 (100%)
5	NAI	B	1333	-	42,48,48	1.51	7 (16%)	47,73,73	1.73	7 (14%)
9	MOS	B	1337	10,8	0,2,3	-	-	-		
2	FES	B	4001	1	0,4,4	-	-	-		
6	BCT	B	1334	-	2,3,3	0.73	0	2,3,3	0.67	0
7	GOL	A	1335	-	5,5,5	1.01	0	5,5,5	1.80	1 (20%)
2	FES	A	3002	1	0,4,4	-	-	-		
10	URC	B	1338	9	8,13,13	1.92	2 (25%)	5,19,19	8.10	5 (100%)
8	MTE	B	1336	9	21,26,26	1.80	4 (19%)	21,40,40	2.01	8 (38%)

In the following table, the Chirals column lists the number of chiral outliers, the number of chiral centers analysed, the number of these observed in the model and the number defined in the Chemical Component Dictionary. Similar counts are reported in the Torsion and Rings columns. '-' means no outliers of that kind were identified.

Mol	Type	Chain	Res	Link	Chirals	Torsions	Rings
5	NAI	A	1333	-	-	3/25/72/72	0/4/5/5
2	FES	B	4001	1	-	-	0/1/1/1
8	MTE	A	1337	9	-	1/6/34/34	0/3/3/3
7	GOL	A	1336	-	-	2/4/4/4	-
2	FES	B	4002	1	-	-	0/1/1/1
2	FES	A	3001	1	-	-	0/1/1/1
4	FAD	B	4005	-	-	1/30/50/50	0/6/6/6
7	GOL	B	1335	-	-	4/4/4/4	-
10	URC	A	1339	9	-	-	0/2/2/2
4	FAD	A	3005	-	-	0/30/50/50	0/6/6/6
10	URC	B	1338	9	-	-	0/2/2/2
7	GOL	A	1335	-	-	2/4/4/4	-
2	FES	A	3002	1	-	-	0/1/1/1
5	NAI	B	1333	-	-	3/25/72/72	0/4/5/5
8	MTE	B	1336	9	-	1/6/34/34	0/3/3/3

The worst 5 of 32 bond length outliers are listed below:

Mol	Chain	Res	Type	Atoms	Z	Observed(Å)	Ideal(Å)
5	B	1333	NAI	C4N-C3N	-5.23	1.39	1.49
8	B	1336	MTE	O4-C4	5.04	1.37	1.24
10	A	1339	URC	C6-N1	5.02	1.41	1.33
4	A	3005	FAD	C4X-N5	4.71	1.39	1.30
4	B	4005	FAD	C2A-N3A	4.66	1.39	1.32

The worst 5 of 75 bond angle outliers are listed below:

Mol	Chain	Res	Type	Atoms	Z	Observed(°)	Ideal(°)
10	A	1339	URC	C4-N9-C8	15.44	110.49	101.12
10	B	1338	URC	C4-N9-C8	13.59	109.36	101.12
10	A	1339	URC	C2-N1-C6	9.19	122.90	115.14
10	B	1338	URC	C2-N1-C6	8.25	122.11	115.14
5	A	1333	NAI	N3A-C2A-N1A	-7.06	117.64	128.68

There are no chirality outliers.

5 of 17 torsion outliers are listed below:

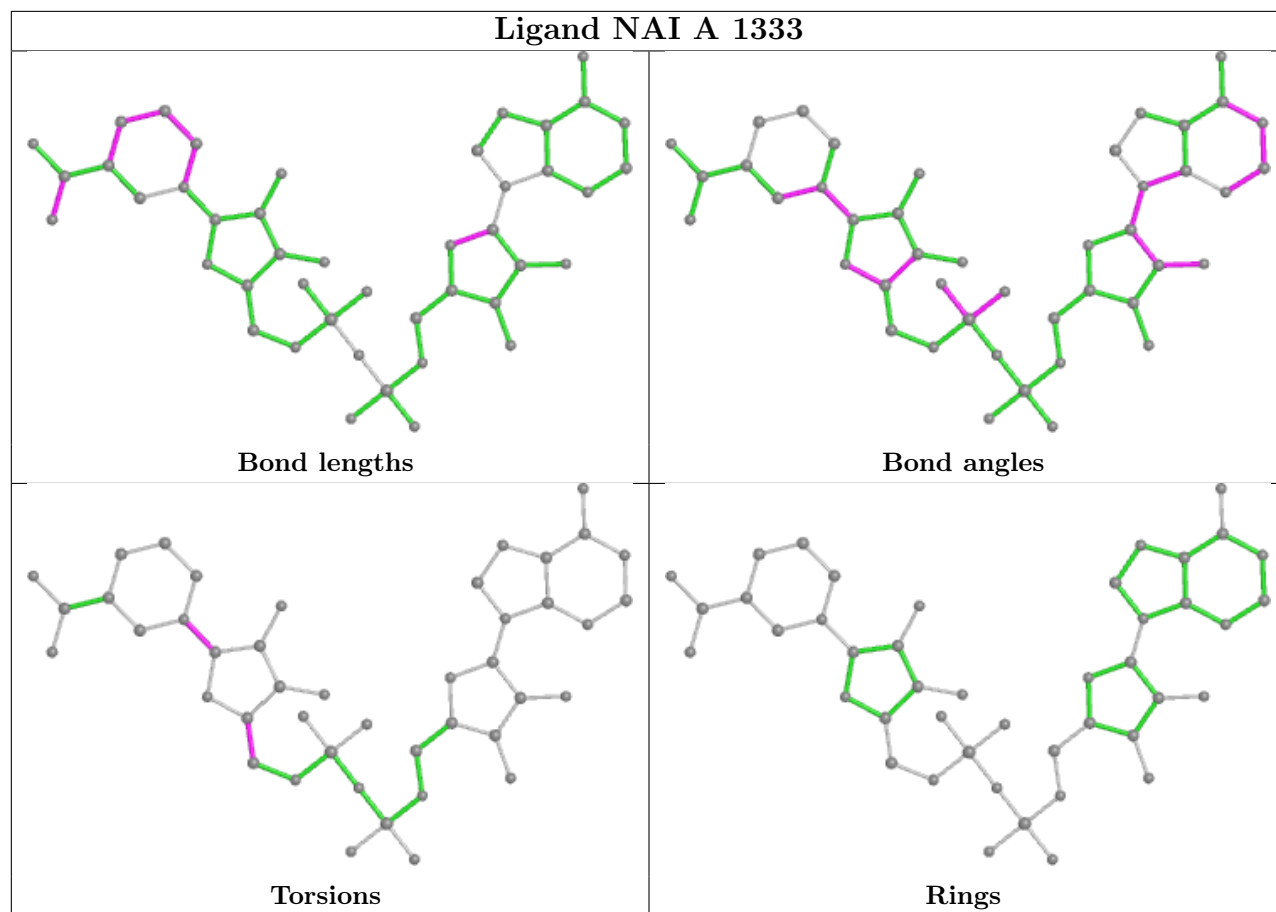
Mol	Chain	Res	Type	Atoms
7	A	1336	GOL	O1-C1-C2-C3
7	B	1335	GOL	C1-C2-C3-O3
5	A	1333	NAI	C2D-C1D-N1N-C6N
5	B	1333	NAI	C2D-C1D-N1N-C6N
8	B	1336	MTE	C3'-C4'-O4'-P

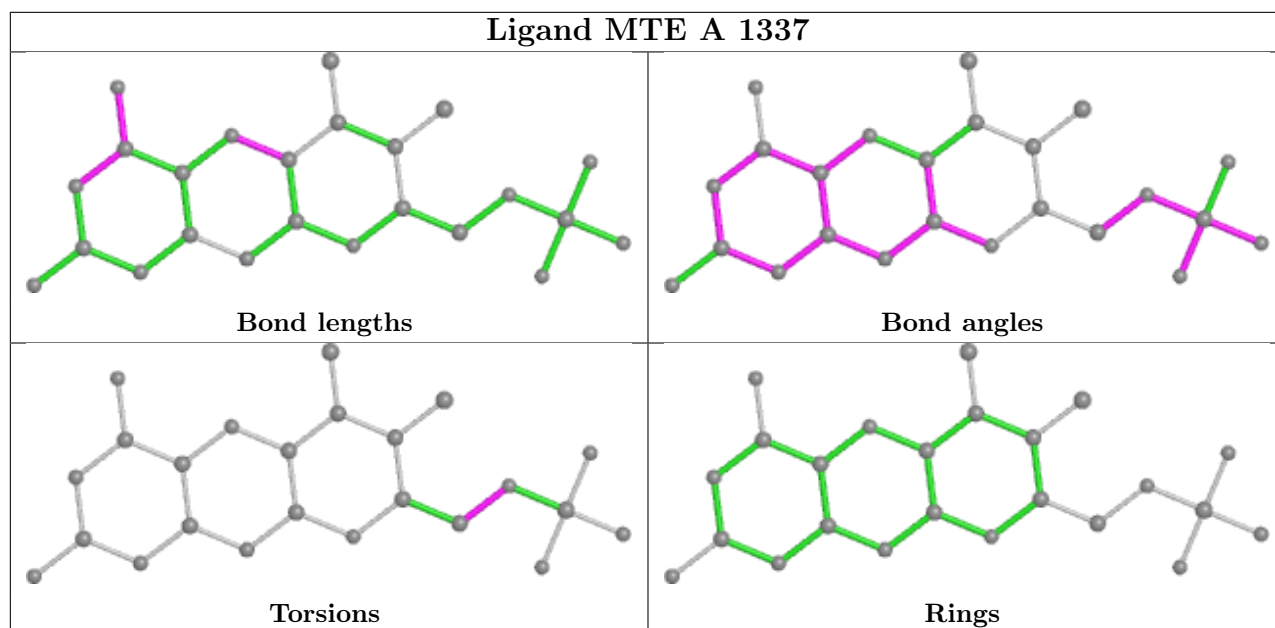
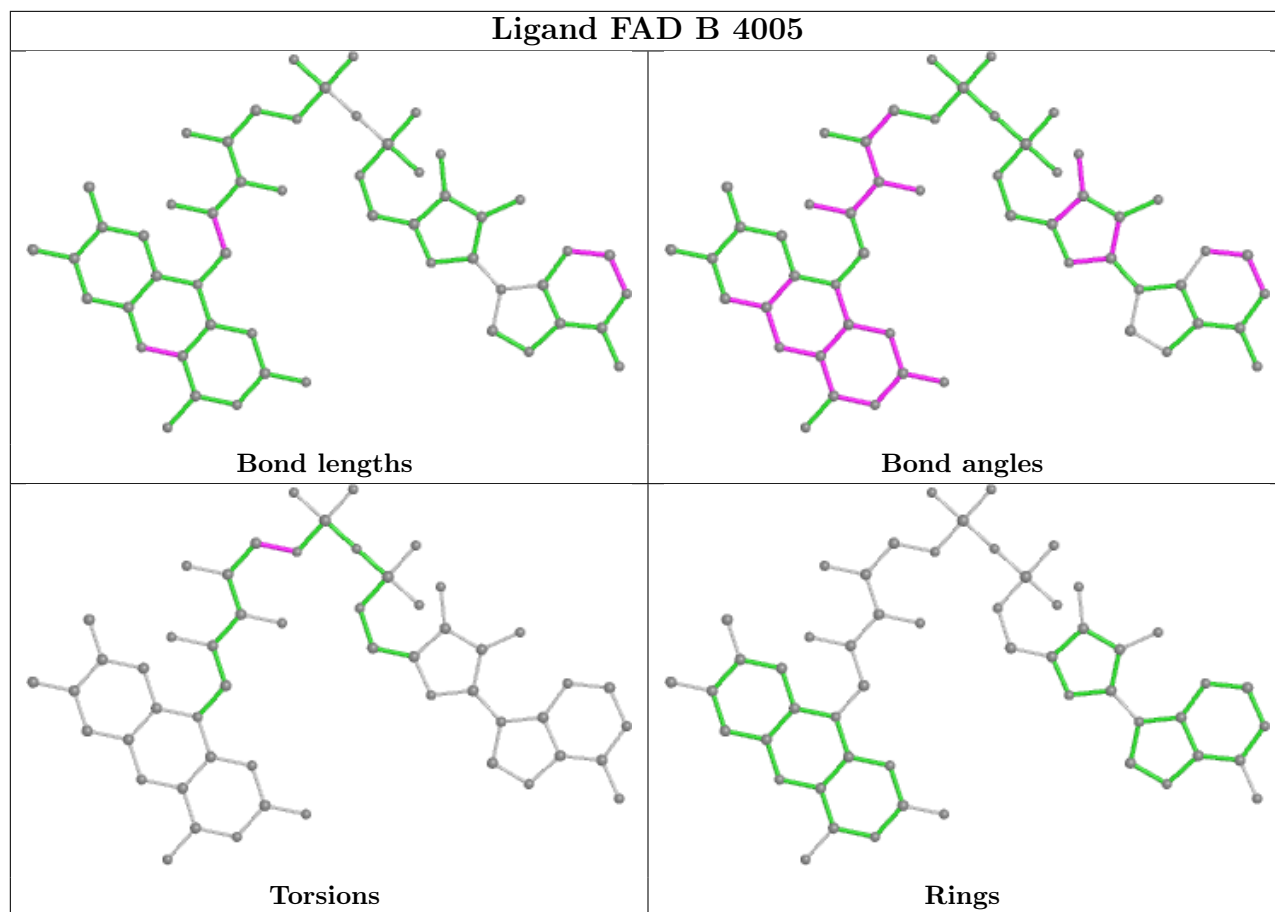
There are no ring outliers.

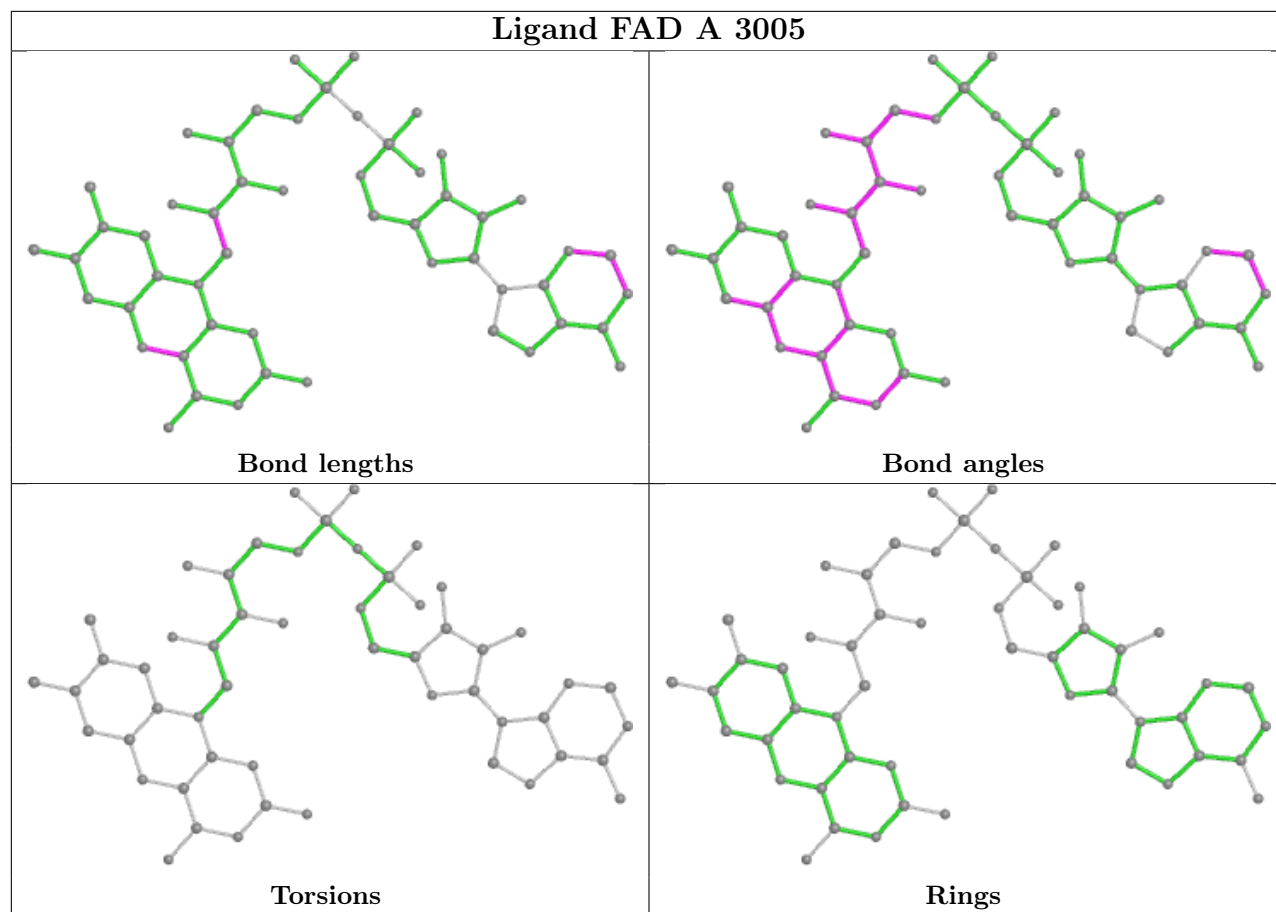
8 monomers are involved in 15 short contacts:

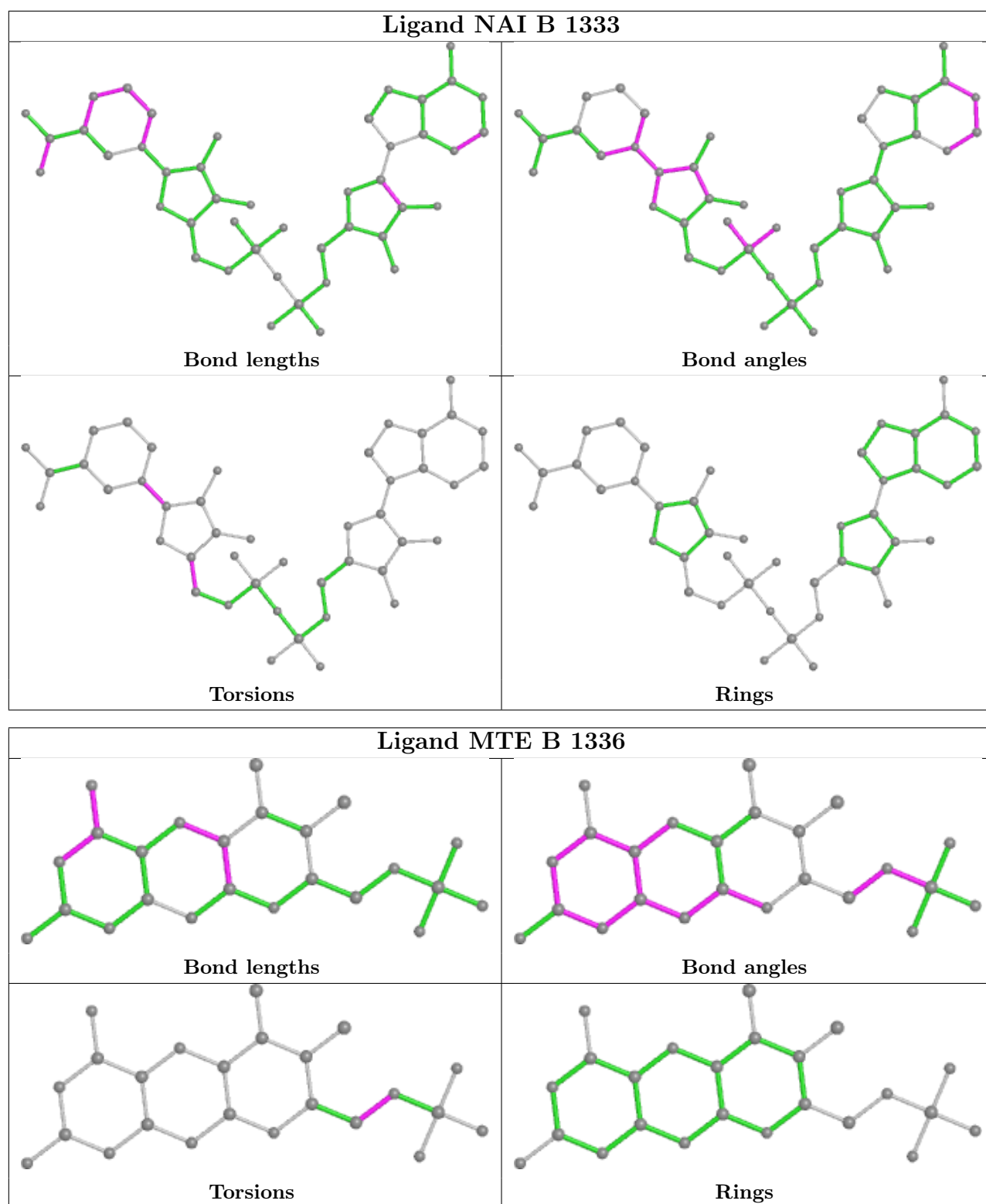
Mol	Chain	Res	Type	Clashes	Symm-Clashes
5	A	1333	NAI	4	0
4	B	4005	FAD	6	0
9	A	1338	MOS	2	0
8	A	1337	MTE	1	0
7	B	1335	GOL	1	0
4	A	3005	FAD	4	0
5	B	1333	NAI	3	0
9	B	1337	MOS	1	0

The following is a two-dimensional graphical depiction of Mogul quality analysis of bond lengths, bond angles, torsion angles, and ring geometry for all instances of the Ligand of Interest. In addition, ligands with molecular weight > 250 and outliers as shown on the validation Tables will also be included. For torsion angles, if less than 5% of the Mogul distribution of torsion angles is within 10 degrees of the torsion angle in question, then that torsion angle is considered an outlier. Any bond that is central to one or more torsion angles identified as an outlier by Mogul will be highlighted in the graph. For rings, the root-mean-square deviation (RMSD) between the ring in question and similar rings identified by Mogul is calculated over all ring torsion angles. If the average RMSD is greater than 60 degrees and the minimal RMSD between the ring in question and any Mogul-identified rings is also greater than 60 degrees, then that ring is considered an outlier. The outliers are highlighted in purple. The color gray indicates Mogul did not find sufficient equivalents in the CSD to analyse the geometry.









5.7 Other polymers [\(i\)](#)

There are no such residues in this entry.

5.8 Polymer linkage issues

There are no chain breaks in this entry.

6 Fit of model and data [i](#)

6.1 Protein, DNA and RNA chains [i](#)

In the following table, the column labelled ‘#RSRZ> 2’ contains the number (and percentage) of RSRZ outliers, followed by percent RSRZ outliers for the chain as percentile scores relative to all X-ray entries and entries of similar resolution. The OWAB column contains the minimum, median, 95th percentile and maximum values of the occupancy-weighted average B-factor per residue. The column labelled ‘Q< 0.9’ lists the number of (and percentage) of residues with an average occupancy less than 0.9.

Mol	Chain	Analysed	<RSRZ>	#RSRZ>2	OWAB(Å ²)	Q<0.9
1	A	1291/1332 (96%)	-0.45	23 (1%) 68 72	12, 22, 39, 66	0
1	B	1289/1332 (96%)	-0.49	19 (1%) 73 77	12, 22, 39, 65	0
All	All	2580/2664 (96%)	-0.47	42 (1%) 72 75	12, 22, 39, 66	0

The worst 5 of 42 RSRZ outliers are listed below:

Mol	Chain	Res	Type	RSRZ
1	A	1288	ASN	7.4
1	B	1288	ASN	5.7
1	B	1287	ASN	5.6
1	B	565	ASN	4.6
1	A	565	ASN	4.5

6.2 Non-standard residues in protein, DNA, RNA chains [i](#)

There are no non-standard protein/DNA/RNA residues in this entry.

6.3 Carbohydrates [i](#)

There are no monosaccharides in this entry.

6.4 Ligands [i](#)

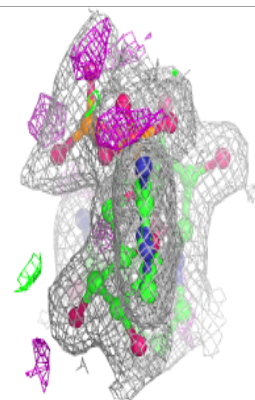
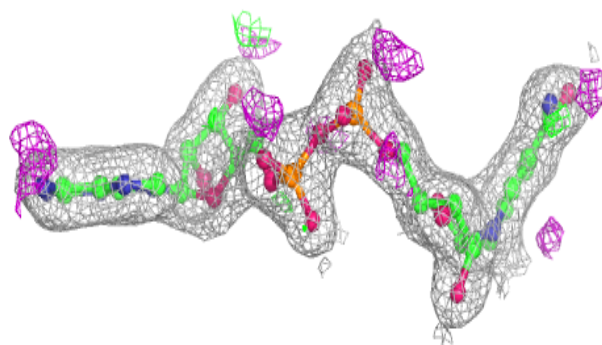
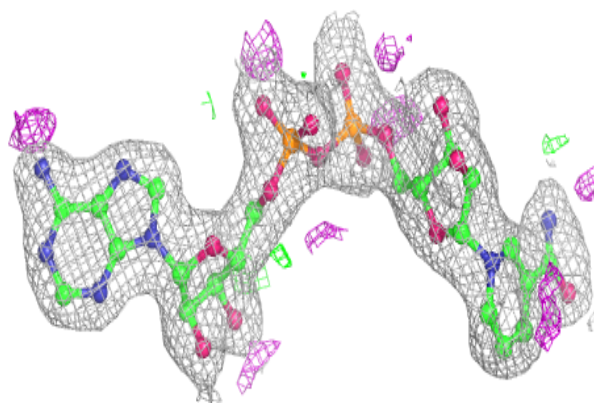
In the following table, the Atoms column lists the number of modelled atoms in the group and the number defined in the chemical component dictionary. The B-factors column lists the minimum, median, 95th percentile and maximum values of B factors of atoms in the group. The column labelled ‘Q< 0.9’ lists the number of atoms with occupancy less than 0.9.

Mol	Type	Chain	Res	Atoms	RSCC	RSR	B-factors(\AA^2)	Q<0.9
10	URC	A	1339	12/12	0.88	0.13	30,34,37,39	0
7	GOL	A	1335	6/6	0.91	0.14	28,39,39,41	0
10	URC	B	1338	12/12	0.91	0.16	31,38,41,43	0
7	GOL	B	1335	6/6	0.93	0.12	29,35,39,40	0
7	GOL	A	1336	6/6	0.96	0.11	23,27,31,32	0
5	NAI	A	1333	44/44	0.96	0.08	18,25,29,33	0
4	FAD	A	3005	53/53	0.98	0.11	14,19,24,28	0
5	NAI	B	1333	44/44	0.98	0.07	18,25,28,31	0
8	MTE	A	1337	24/24	0.98	0.09	14,19,24,25	0
6	BCT	A	1334	4/4	0.98	0.11	17,20,20,22	0
4	FAD	B	4005	53/53	0.98	0.10	15,18,21,28	0
6	BCT	B	1334	4/4	0.99	0.09	16,17,18,19	0
8	MTE	B	1336	24/24	0.99	0.07	15,20,23,25	0
2	FES	A	3002	4/4	1.00	0.07	15,15,17,18	0
2	FES	B	4001	4/4	1.00	0.05	14,15,16,16	0
2	FES	B	4002	4/4	1.00	0.06	14,15,16,16	0
3	CA	A	3008	1/1	1.00	0.05	20,20,20,20	0
9	MOS	A	1338	3/4	1.00	0.06	25,25,27,40	0
9	MOS	B	1337	3/4	1.00	0.06	27,27,27,39	0
3	CA	B	4008	1/1	1.00	0.05	19,19,19,19	0
2	FES	A	3001	4/4	1.00	0.05	15,15,16,17	0

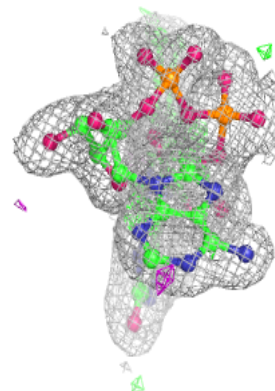
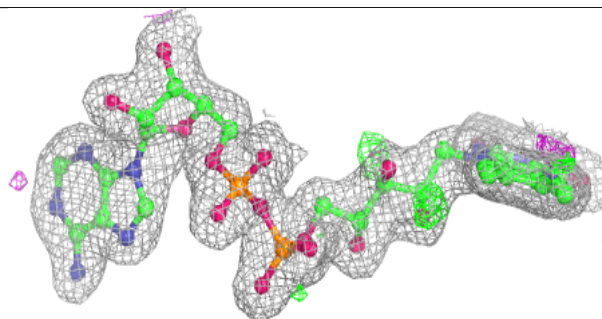
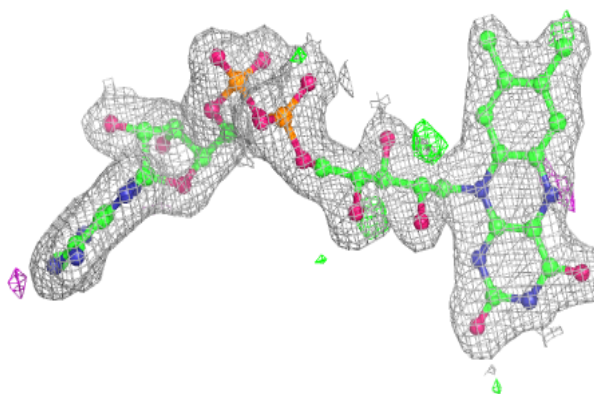
The following is a graphical depiction of the model fit to experimental electron density of all instances of the Ligand of Interest. In addition, ligands with molecular weight > 250 and outliers as shown on the geometry validation Tables will also be included. Each fit is shown from different orientation to approximate a three-dimensional view.

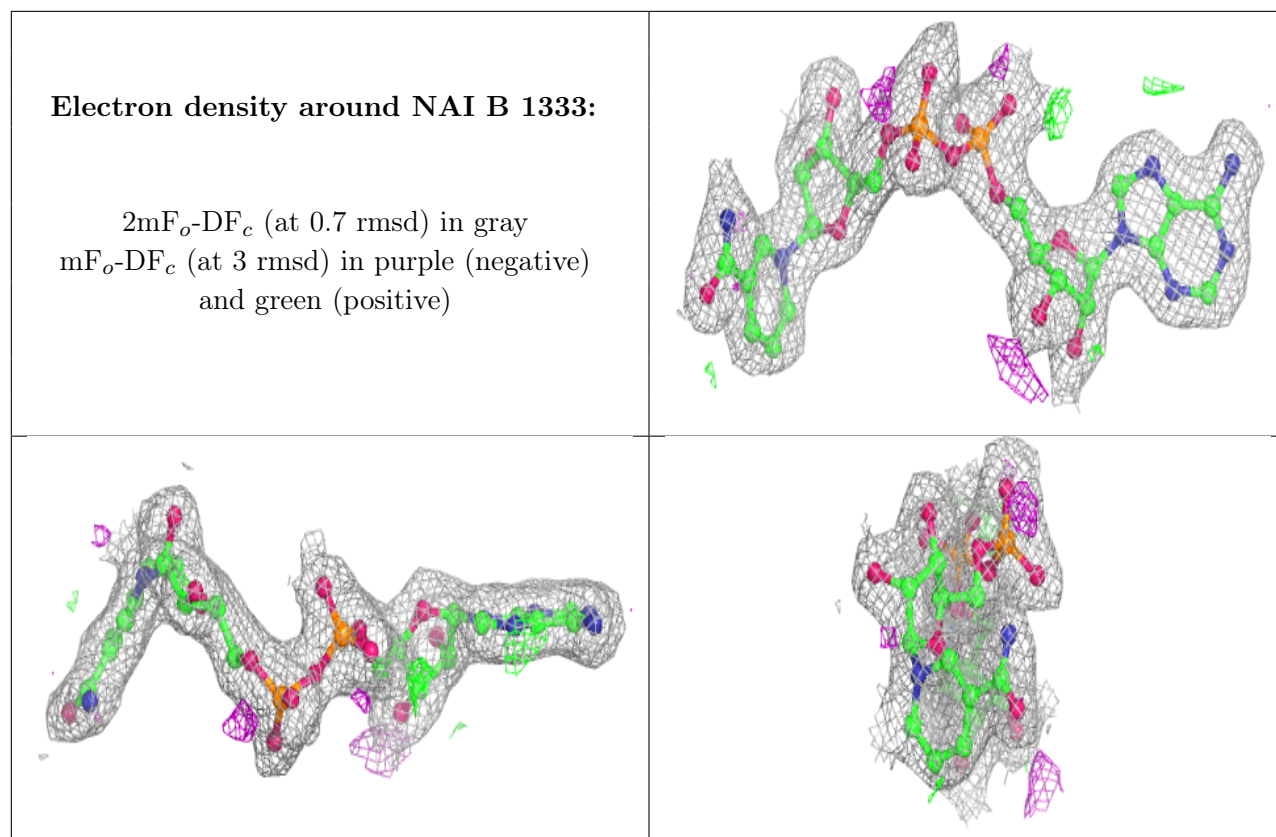
Electron density around NAI A 1333:

$2mF_o-DF_c$ (at 0.7 rmsd) in gray
 mF_o-DF_c (at 3 rmsd) in purple (negative)
and green (positive)

**Electron density around FAD A 3005:**

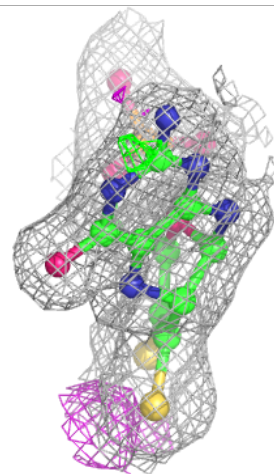
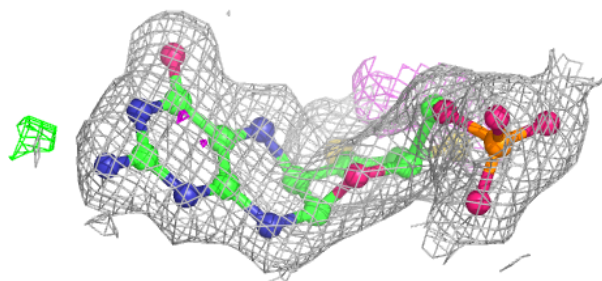
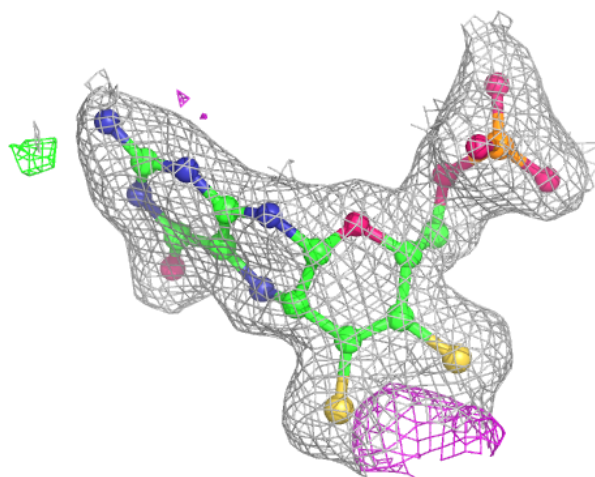
$2mF_o-DF_c$ (at 0.7 rmsd) in gray
 mF_o-DF_c (at 3 rmsd) in purple (negative)
and green (positive)

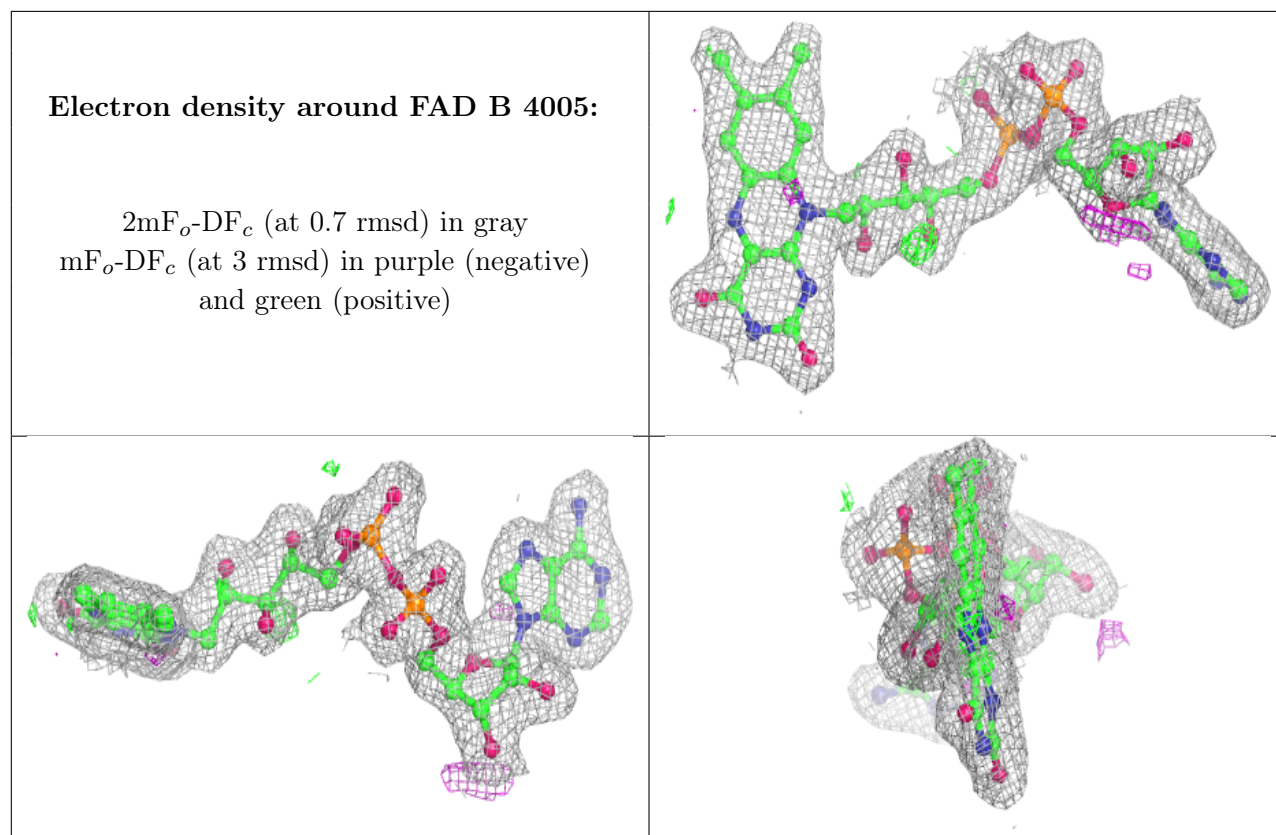


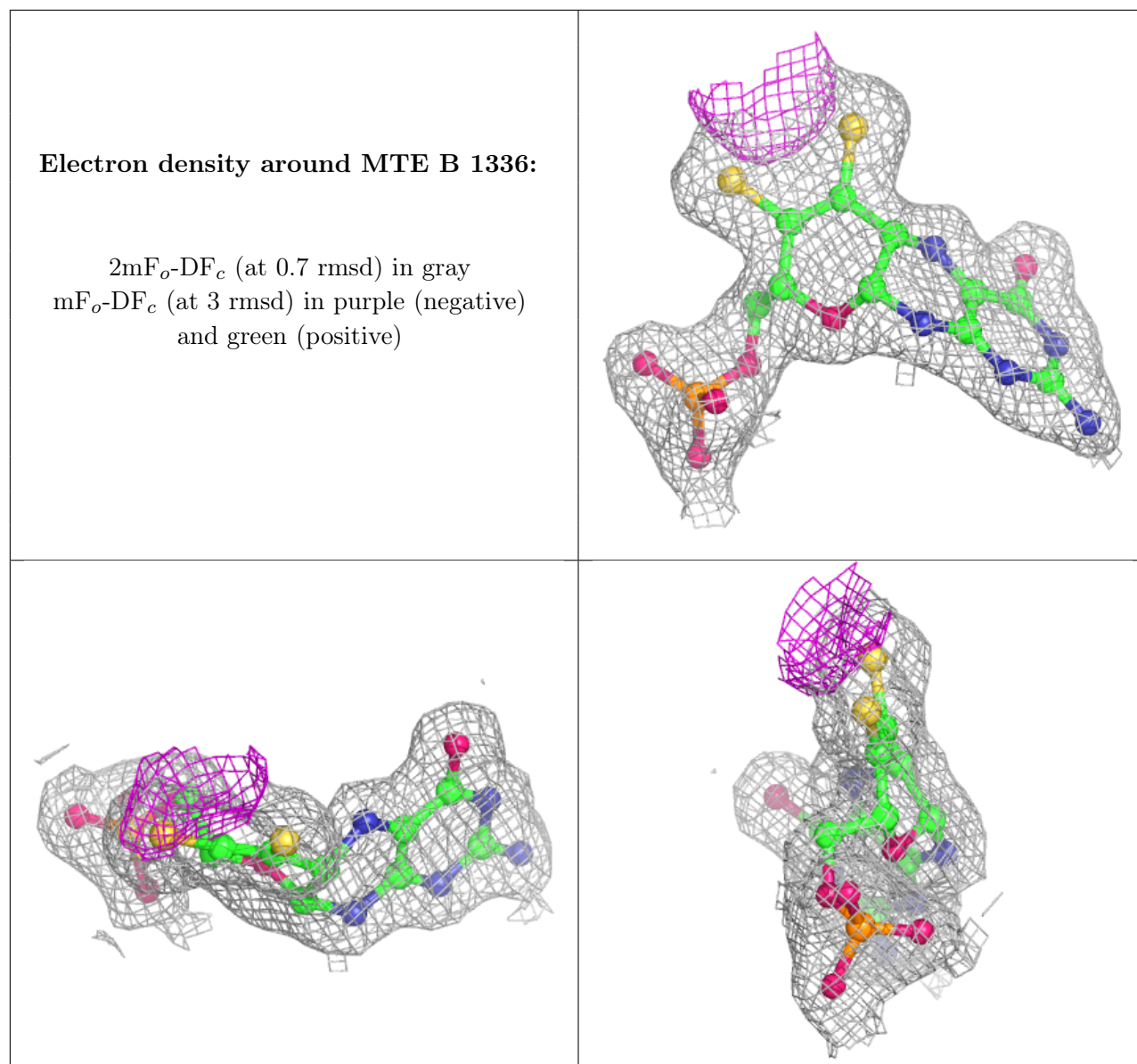


Electron density around MTE A 1337:

$2mF_o-DF_c$ (at 0.7 rmsd) in gray
 mF_o-DF_c (at 3 rmsd) in purple (negative)
and green (positive)







6.5 Other polymers [i](#)

There are no such residues in this entry.