



# Full wwPDB X-ray Structure Validation Report ⓘ

May 16, 2020 – 08:34 pm BST

PDB ID : 2ANK  
Title : orally active thrombin inhibitors in complex with thrombin and an exosite decapeptide  
Authors : Lange, U.E.W.; Baucke, D.; Hornberger, W.; Mack, H.; Seitz, W.; Hoeffken, H.W.  
Deposited on : 2005-08-11  
Resolution : 2.46 Å(reported)

This is a Full wwPDB X-ray Structure Validation Report for a publicly released PDB entry.

We welcome your comments at [validation@mail.wwpdb.org](mailto:validation@mail.wwpdb.org)

A user guide is available at

<https://www.wwpdb.org/validation/2017/XrayValidationReportHelp>

with specific help available everywhere you see the ⓘ symbol.

---

The following versions of software and data (see [references ⓘ](#)) were used in the production of this report:

MolProbity : 4.02b-467  
Mogul : 1.8.5 (274361), CSD as541be (2020)  
Xtrriage (Phenix) : **NOT EXECUTED**  
EDS : **NOT EXECUTED**  
buster-report : 1.1.7 (2018)  
Percentile statistics : 20191225.v01 (using entries in the PDB archive December 25th 2019)  
Ideal geometry (proteins) : Engh & Huber (2001)  
Ideal geometry (DNA, RNA) : Parkinson et al. (1996)  
Validation Pipeline (wwPDB-VP) : 2.11

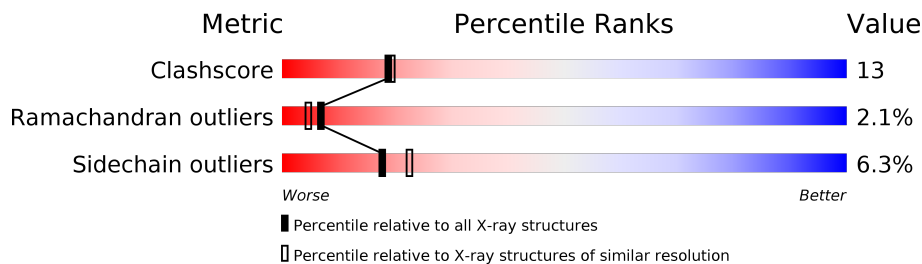
# 1 Overall quality at a glance

The following experimental techniques were used to determine the structure:

*X-RAY DIFFRACTION*

The reported resolution of this entry is 2.46 Å.

Percentile scores (ranging between 0-100) for global validation metrics of the entry are shown in the following graphic. The table shows the number of entries on which the scores are based.



Metric	Whole archive (#Entries)	Similar resolution (#Entries, resolution range(Å))
Clashscore	141614	1613 (2.48-2.44)
Ramachandran outliers	138981	1598 (2.48-2.44)
Sidechain outliers	138945	1598 (2.48-2.44)

The table below summarises the geometric issues observed across the polymeric chains and their fit to the electron density. The red, orange, yellow and green segments on the lower bar indicate the fraction of residues that contain outliers for  $\geq 3$ , 2, 1 and 0 types of geometric quality criteria respectively. A grey segment represents the fraction of residues that are not modelled. The numeric value for each fraction is indicated below the corresponding segment, with a dot representing fractions  $\leq 5\%$ .

Note EDS was not executed.

Mol	Chain	Length	Quality of chain
1	H	259	68% (green), 27% (yellow), 5% (orange), 0% (red), 0% (grey)
2	L	34	35% (green), 53% (yellow), 12% (orange), 0% (red), 0% (grey)
3	P	11	55% (green), 45% (yellow), 0% (orange), 0% (red), 0% (grey)

The following table lists non-polymeric compounds, carbohydrate monomers and non-standard residues in protein, DNA, RNA chains that are outliers for geometric or electron-density-fit criteria:

Mol	Type	Chain	Res	Chirality	Geometry	Clashes	Electron density
3	HYP	P	60	X	-	-	-

## 2 Entry composition

There are 5 unique types of molecules in this entry. The entry contains 2608 atoms, of which 0 are hydrogens and 0 are deuteriums.

In the tables below, the ZeroOcc column contains the number of atoms modelled with zero occupancy, the AltConf column contains the number of residues with at least one atom in alternate conformation and the Trace column contains the number of residues modelled with at most 2 atoms.

- Molecule 1 is a protein called Thrombin heavy chain.

Mol	Chain	Residues	Atoms					ZeroOcc	AltConf	Trace
			Total	C	N	O	S			
1	H	250	2025	1292	358	361	14	0	0	0

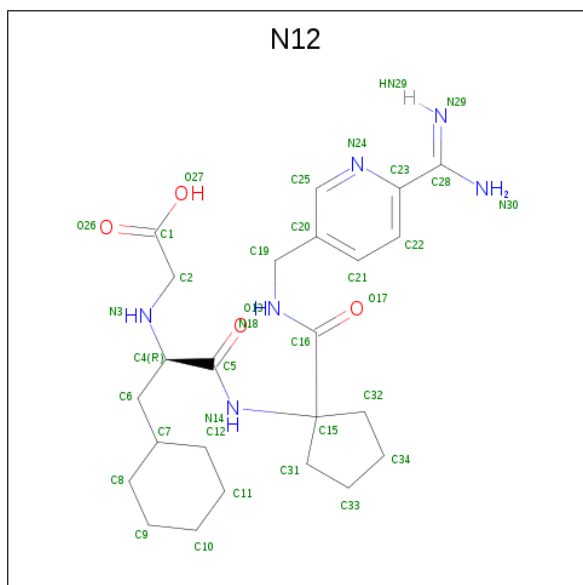
- Molecule 2 is a protein called Thrombin light chain.

Mol	Chain	Residues	Atoms					ZeroOcc	AltConf	Trace
			Total	C	N	O	S			
2	L	34	269	164	46	58	1	0	0	0

- Molecule 3 is a protein called synthetic peptide.

Mol	Chain	Residues	Atoms					ZeroOcc	AltConf	Trace
			Total	C	N	O	S			
3	P	11	106	68	11	26	1	0	0	0

- Molecule 4 is N-[(1R)-2-[(1-[(6-[AMINO(IMINO)METHYL]PYRIDIN-3-YL)METHYL)AMINO]CARBONYL]CYCLOPENTYL)AMINO]-1-(CYCLOHEXYLMETHYL)-2-OXOETHYL]GLYCINE (three-letter code: N12) (formula: C<sub>24</sub>H<sub>36</sub>N<sub>6</sub>O<sub>4</sub>).



Mol	Chain	Residues	Atoms				ZeroOcc	AltConf
			Total	C	N	O		
4	H	1	34	24	6	4	0	0

- Molecule 5 is water.

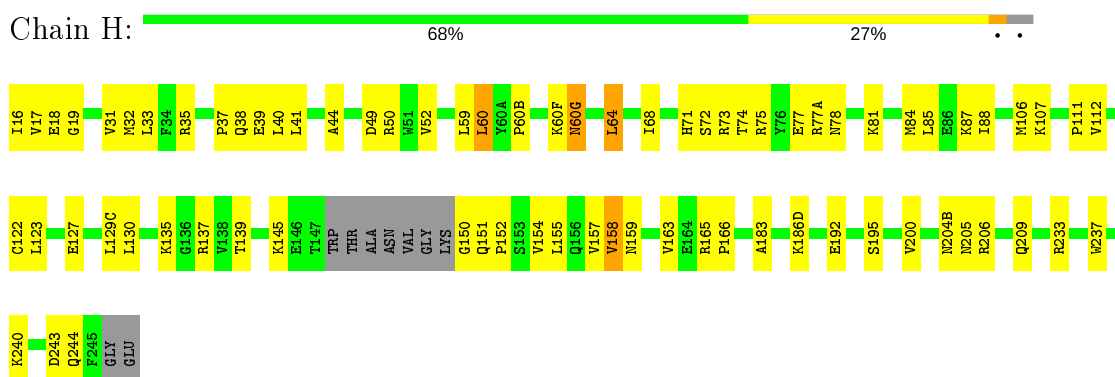
Mol	Chain	Residues	Atoms		ZeroOcc	AltConf
5	H	151	Total	O	0	0
			151	151		
5	L	20	Total	O	0	0
			20	20		
5	P	3	Total	O	0	0
			3	3		

### 3 Residue-property plots [i](#)

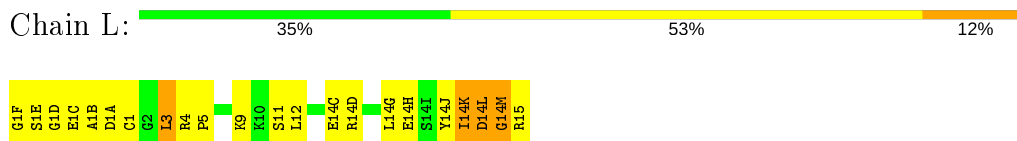
These plots are drawn for all protein, RNA and DNA chains in the entry. The first graphic for a chain summarises the proportions of the various outlier classes displayed in the second graphic. The second graphic shows the sequence view annotated by issues in geometry. Residues are color-coded according to the number of geometric quality criteria for which they contain at least one outlier: green = 0, yellow = 1, orange = 2 and red = 3 or more. Stretches of 2 or more consecutive residues without any outlier are shown as a green connector. Residues present in the sample, but not in the model, are shown in grey.

Note EDS was not executed.

- Molecule 1: Thrombin heavy chain



- Molecule 2: Thrombin light chain



- Molecule 3: synthetic peptide



## 4 Data and refinement statistics

Xtrriage (Phenix) and EDS were not executed - this section is therefore incomplete.

Property	Value	Source
Space group	C 1 2 1	Depositor
Cell constants a, b, c, $\alpha$ , $\beta$ , $\gamma$	71.24Å 72.39Å 73.06Å 90.00° 101.01° 90.00°	Depositor
Resolution (Å)	44.13 – 2.46	Depositor
% Data completeness (in resolution range)	89.8 (44.13-2.46)	Depositor
$R_{merge}$	0.08	Depositor
$R_{sym}$	(Not available)	Depositor
Refinement program	CNX 2002	Depositor
R, $R_{free}$	0.172 , 0.211	Depositor
Estimated twinning fraction	No twinning to report.	Xtrriage
Total number of atoms	2608	wwPDB-VP
Average B, all atoms (Å <sup>2</sup> )	33.0	wwPDB-VP

## 5 Model quality [i](#)

### 5.1 Standard geometry [i](#)

Bond lengths and bond angles in the following residue types are not validated in this section: N12, HYP, SIN, ALC, SMF

The Z score for a bond length (or angle) is the number of standard deviations the observed value is removed from the expected value. A bond length (or angle) with  $|Z| > 5$  is considered an outlier worth inspection. RMSZ is the root-mean-square of all Z scores of the bond lengths (or angles).

Mol	Chain	Bond lengths		Bond angles	
		RMSZ	# Z  >5	RMSZ	# Z  >5
1	H	0.32	0/2077	0.64	0/2806
2	L	0.34	0/271	0.71	0/358
3	P	0.34	0/63	0.62	0/80
All	All	0.32	0/2411	0.65	0/3244

Chiral center outliers are detected by calculating the chiral volume of a chiral center and verifying if the center is modelled as a planar moiety or with the opposite hand. A planarity outlier is detected by checking planarity of atoms in a peptide group, atoms in a mainchain group or atoms of a sidechain that are expected to be planar.

Mol	Chain	#Chirality outliers	#Planarity outliers
3	P	1	0

There are no bond length outliers.

There are no bond angle outliers.

All (1) chirality outliers are listed below:

Mol	Chain	Res	Type	Atom
3	P	60	HYP	CG

There are no planarity outliers.

### 5.2 Too-close contacts [i](#)

In the following table, the Non-H and H(model) columns list the number of non-hydrogen atoms and hydrogen atoms in the chain respectively. The H(added) column lists the number of hydrogen atoms added and optimized by MolProbity. The Clashes column lists the number of clashes within the asymmetric unit, whereas Symm-Clashes lists symmetry related clashes.

Mol	Chain	Non-H	H(model)	H(added)	Clashes	Symm-Clashes
1	H	2025	0	2001	51	0
2	L	269	0	262	14	0
3	P	106	0	86	4	0
4	H	34	0	34	1	0
5	H	151	0	0	3	0
5	L	20	0	0	0	0
5	P	3	0	0	0	0
All	All	2608	0	2383	63	0

The all-atom clashscore is defined as the number of clashes found per 1000 atoms (including hydrogen atoms). The all-atom clashscore for this structure is 13.

All (63) close contacts within the same asymmetric unit are listed below, sorted by their clash magnitude.

Atom-1	Atom-2	Interatomic distance (Å)	Clash overlap (Å)
1:H:240:LYS:O	1:H:244:GLN:HG2	1.76	0.83
1:H:139:THR:HG22	1:H:157:VAL:HB	1.72	0.71
1:H:60:LEU:HD22	1:H:60(B):PRO:HD3	1.73	0.70
2:L:14(D):ARG:O	2:L:14(H):GLU:HG3	1.95	0.67
1:H:151:GLN:HB3	1:H:152:PRO:HD2	1.79	0.65
1:H:206:ARG:HG2	2:L:3:LEU:HD13	1.79	0.65
2:L:14(J):TYR:O	2:L:14(K):ILE:HG12	1.97	0.64
1:H:237:TRP:HA	1:H:240:LYS:HE3	1.80	0.63
1:H:50:ARG:HH11	1:H:107:LYS:HD2	1.63	0.63
2:L:14(M):GLY:O	2:L:15:ARG:HB2	2.00	0.62
1:H:59:LEU:HD13	1:H:88:ILE:HG21	1.81	0.61
1:H:87:LYS:HE3	5:H:593:HOH:O	2.00	0.61
1:H:16:ILE:CG2	1:H:158:VAL:HG22	2.30	0.61
1:H:33:LEU:HD11	1:H:106:MET:HE3	1.85	0.57
1:H:16:ILE:HG23	1:H:158:VAL:HG22	1.88	0.55
1:H:19:GLY:HA2	1:H:158:VAL:HG13	1.89	0.55
1:H:73:ARG:HD3	1:H:152:PRO:O	2.07	0.54
2:L:1(B):ALA:O	2:L:1(A):ASP:CB	2.56	0.54
1:H:127:GLU:CD	1:H:127:GLU:H	2.11	0.54
1:H:137:ARG:HE	1:H:159:ASN:HD21	1.54	0.54
1:H:16:ILE:HG23	1:H:158:VAL:CG2	2.38	0.54
1:H:60(F):LYS:HD3	5:H:569:HOH:O	2.08	0.53
1:H:145:LYS:HE2	1:H:150:GLY:N	2.24	0.53
1:H:135:LYS:HE3	2:L:15:ARG:OXT	2.10	0.51
1:H:77(A):ARG:O	1:H:78:ASN:HB2	2.11	0.51
1:H:233:ARG:HD2	5:H:573:HOH:O	2.12	0.50
1:H:200:VAL:HG12	1:H:209:GLN:HA	1.93	0.49

*Continued on next page...*



*Continued from previous page...*

Atom-1	Atom-2	Interatomic distance (Å)	Clash overlap (Å)
1:H:33:LEU:HD11	1:H:106:MET:CE	2.43	0.48
1:H:49:ASP:OD2	1:H:111:PRO:HB3	2.14	0.48
1:H:74:THR:HB	3:P:56:TYR:HA	1.95	0.48
1:H:64:LEU:HD12	1:H:85:LEU:CD1	2.44	0.48
3:P:61:GLU:HA	3:P:64:ALC:HD13	1.96	0.47
2:L:1(F):GLY:O	2:L:1(D):GLY:N	2.48	0.47
1:H:60(G):ASN:C	1:H:60(G):ASN:HD22	2.17	0.46
1:H:165:ARG:HB3	1:H:166:PRO:HD3	1.96	0.46
1:H:60:LEU:CD2	1:H:60(B):PRO:HD3	2.45	0.46
1:H:195:SER:OG	4:H:501:N12:H192	2.16	0.46
1:H:204(B):ASN:O	1:H:205:ASN:HB2	2.16	0.46
1:H:72:SER:OG	1:H:75:ARG:HG2	2.17	0.45
1:H:33:LEU:HD21	1:H:106:MET:HE1	1.98	0.45
1:H:35:ARG:HB2	1:H:41:LEU:HD13	1.97	0.45
1:H:163:VAL:HG23	1:H:183:ALA:HA	1.99	0.45
1:H:154:VAL:HG13	1:H:155:LEU:N	2.30	0.44
1:H:71:HIS:CD2	1:H:154:VAL:HG22	2.53	0.44
1:H:37:PRO:O	1:H:39:GLU:HG2	2.18	0.44
1:H:59:LEU:HD13	1:H:88:ILE:CG2	2.48	0.43
1:H:151:GLN:HB3	1:H:152:PRO:CD	2.48	0.43
2:L:15:ARG:HG2	2:L:15:ARG:OXT	2.19	0.43
1:H:68:ILE:HD12	1:H:112:VAL:HG21	2.01	0.42
1:H:127:GLU:CD	1:H:127:GLU:N	2.72	0.42
1:H:84:MET:SD	3:P:65:GLN:OXT	2.77	0.42
1:H:32:MET:HG3	1:H:40:LEU:CD1	2.50	0.42
1:H:17:VAL:HG12	1:H:18:GLU:HG2	2.01	0.42
2:L:1(B):ALA:O	2:L:1(A):ASP:HB2	2.19	0.41
2:L:14(C):GLU:O	2:L:14(G):LEU:HD23	2.20	0.41
2:L:14(J):TYR:C	2:L:14(K):ILE:CG1	2.88	0.41
2:L:14(L):ASP:O	2:L:14(M):GLY:O	2.39	0.41
1:H:122:CYS:SG	2:L:1:CYS:C	2.98	0.41
1:H:31:VAL:HB	1:H:44:ALA:HB3	2.02	0.41
1:H:64:LEU:HD12	1:H:85:LEU:HD12	2.00	0.41
1:H:130:LEU:HD12	1:H:130:LEU:HA	1.89	0.41
2:L:4:ARG:HA	2:L:5:PRO:HD3	1.93	0.40
1:H:38:GLN:NE2	3:P:64:ALC:H22	2.37	0.40

There are no symmetry-related clashes.

## 5.3 Torsion angles [i](#)

### 5.3.1 Protein backbone [i](#)

In the following table, the Percentiles column shows the percent Ramachandran outliers of the chain as a percentile score with respect to all X-ray entries followed by that with respect to entries of similar resolution.

The Analysed column shows the number of residues for which the backbone conformation was analysed, and the total number of residues.

Mol	Chain	Analysed	Favoured	Allowed	Outliers	Percentiles	
1	H	246/259 (95%)	229 (93%)	16 (6%)	1 (0%)	34	41
2	L	32/34 (94%)	23 (72%)	5 (16%)	4 (12%)	0	0
3	P	5/11 (46%)	4 (80%)	0	1 (20%)	0	0
All	All	283/304 (93%)	256 (90%)	21 (7%)	6 (2%)	7	5

All (6) Ramachandran outliers are listed below:

Mol	Chain	Res	Type
2	L	1(C)	GLU
2	L	14(M)	GLY
2	L	14(K)	ILE
1	H	77	GLU
3	P	62	GLU
2	L	1(E)	SER

### 5.3.2 Protein sidechains [i](#)

In the following table, the Percentiles column shows the percent sidechain outliers of the chain as a percentile score with respect to all X-ray entries followed by that with respect to entries of similar resolution.

The Analysed column shows the number of residues for which the sidechain conformation was analysed, and the total number of residues.

Mol	Chain	Analysed	Rotameric	Outliers	Percentiles	
1	H	219/225 (97%)	208 (95%)	11 (5%)	24	32
2	L	29/29 (100%)	24 (83%)	5 (17%)	2	1
3	P	7/7 (100%)	7 (100%)	0	100	100
All	All	255/261 (98%)	239 (94%)	16 (6%)	18	22

All (16) residues with a non-rotameric sidechain are listed below:

Mol	Chain	Res	Type
1	H	52	VAL
1	H	60	LEU
1	H	60(G)	ASN
1	H	64	LEU
1	H	81	LYS
1	H	123	LEU
1	H	129(C)	LEU
1	H	158	VAL
1	H	186(D)	LYS
1	H	192	GLU
1	H	243	ASP
2	L	3	LEU
2	L	9	LYS
2	L	11	SER
2	L	12	LEU
2	L	14(L)	ASP

Some sidechains can be flipped to improve hydrogen bonding and reduce clashes. All (3) such sidechains are listed below:

Mol	Chain	Res	Type
1	H	60(G)	ASN
1	H	78	ASN
1	H	159	ASN

### 5.3.3 RNA [i](#)

There are no RNA molecules in this entry.

## 5.4 Non-standard residues in protein, DNA, RNA chains [i](#)

3 non-standard protein/DNA/RNA residues are modelled in this entry.

In the following table, the Counts columns list the number of bonds (or angles) for which Mogul statistics could be retrieved, the number of bonds (or angles) that are observed in the model and the number of bonds (or angles) that are defined in the Chemical Component Dictionary. The Link column lists molecule types, if any, to which the group is linked. The Z score for a bond length (or angle) is the number of standard deviations the observed value is removed from the expected value. A bond length (or angle) with  $|Z| > 2$  is considered an outlier worth inspection. RMSZ is the root-mean-square of all Z scores of the bond lengths (or angles).

Mol	Type	Chain	Res	Link	Bond lengths			Bond angles		
					Counts	RMSZ	# Z  > 2	Counts	RMSZ	# Z  > 2
3	ALC	P	64	3	9,11,12	0.84	0	10,13,15	1.62	1 (10%)
3	HYP	P	60	3	6,8,9	0.60	0	5,10,12	0.78	0
3	SMF	P	63	3	15,16,17	1.37	2 (13%)	18,22,24	1.82	4 (22%)

In the following table, the Chirals column lists the number of chiral outliers, the number of chiral centers analysed, the number of these observed in the model and the number defined in the Chemical Component Dictionary. Similar counts are reported in the Torsion and Rings columns. '-' means no outliers of that kind were identified.

Mol	Type	Chain	Res	Link	Chirals	Torsions	Rings
3	ALC	P	64	3	-	4/5/14/16	0/1/1/1
3	HYP	P	60	3	1/1/2/4	0/0/11/13	0/1/1/1
3	SMF	P	63	3	-	1/10/11/13	0/1/1/1

All (2) bond length outliers are listed below:

Mol	Chain	Res	Type	Atoms	Z	Observed(Å)	Ideal(Å)
3	P	63	SMF	O1-S	2.78	1.53	1.45
3	P	63	SMF	CH-S	2.05	1.82	1.77

All (5) bond angle outliers are listed below:

Mol	Chain	Res	Type	Atoms	Z	Observed(°)	Ideal(°)
3	P	64	ALC	CG-CB-CA	4.52	120.60	114.52
3	P	63	SMF	O3-S-O2	4.15	121.42	111.27
3	P	63	SMF	O3-S-O1	-3.49	102.75	111.27
3	P	63	SMF	O2-S-O1	-3.06	103.36	113.95
3	P	63	SMF	CB-CA-C	-2.91	106.01	111.47

All (1) chirality outliers are listed below:

Mol	Chain	Res	Type	Atom
3	P	60	HYP	CG

All (5) torsion outliers are listed below:

Mol	Chain	Res	Type	Atoms
3	P	64	ALC	N-CA-CB-CG
3	P	64	ALC	C-CA-CB-CG
3	P	64	ALC	CA-CB-CG-CD2
3	P	64	ALC	CA-CB-CG-CD1

*Continued on next page...*

Continued from previous page...

Mol	Chain	Res	Type	Atoms
3	P	63	SMF	O-C-CA-CB

There are no ring outliers.

1 monomer is involved in 2 short contacts:

Mol	Chain	Res	Type	Clashes	Symm-Clashes
3	P	64	ALC	2	0

## 5.5 Carbohydrates [i](#)

There are no carbohydrates in this entry.

## 5.6 Ligand geometry [i](#)

1 ligand is modelled in this entry.

In the following table, the Counts columns list the number of bonds (or angles) for which Mogul statistics could be retrieved, the number of bonds (or angles) that are observed in the model and the number of bonds (or angles) that are defined in the Chemical Component Dictionary. The Link column lists molecule types, if any, to which the group is linked. The Z score for a bond length (or angle) is the number of standard deviations the observed value is removed from the expected value. A bond length (or angle) with  $|Z| > 2$  is considered an outlier worth inspection. RMSZ is the root-mean-square of all Z scores of the bond lengths (or angles).

Mol	Type	Chain	Res	Link	Bond lengths			Bond angles		
					Counts	RMSZ	# Z  > 2	Counts	RMSZ	# Z  > 2
4	N12	H	501	-	33,36,36	1.04	1 (3%)	43,49,49	1.44	7 (16%)

In the following table, the Chirals column lists the number of chiral outliers, the number of chiral centers analysed, the number of these observed in the model and the number defined in the Chemical Component Dictionary. Similar counts are reported in the Torsion and Rings columns. '-' means no outliers of that kind were identified.

Mol	Type	Chain	Res	Link	Chirals	Torsions	Rings
4	N12	H	501	-	-	4/31/50/50	0/3/3/3

All (1) bond length outliers are listed below:

Mol	Chain	Res	Type	Atoms	Z	Observed(Å)	Ideal(Å)
4	H	501	N12	C16-N18	2.03	1.38	1.34

All (7) bond angle outliers are listed below:

Mol	Chain	Res	Type	Atoms	Z	Observed(°)	Ideal(°)
4	H	501	N12	C15-C16-N18	4.72	121.27	116.37
4	H	501	N12	C25-N24-C23	3.50	122.80	117.36
4	H	501	N12	C2-N3-C4	2.77	119.17	113.92
4	H	501	N12	C22-C23-N24	-2.19	119.74	122.72
4	H	501	N12	C20-C25-N24	-2.15	120.57	123.95
4	H	501	N12	C15-N14-C5	2.14	125.74	122.13
4	H	501	N12	C28-C23-N24	2.05	119.42	116.10

There are no chirality outliers.

All (4) torsion outliers are listed below:

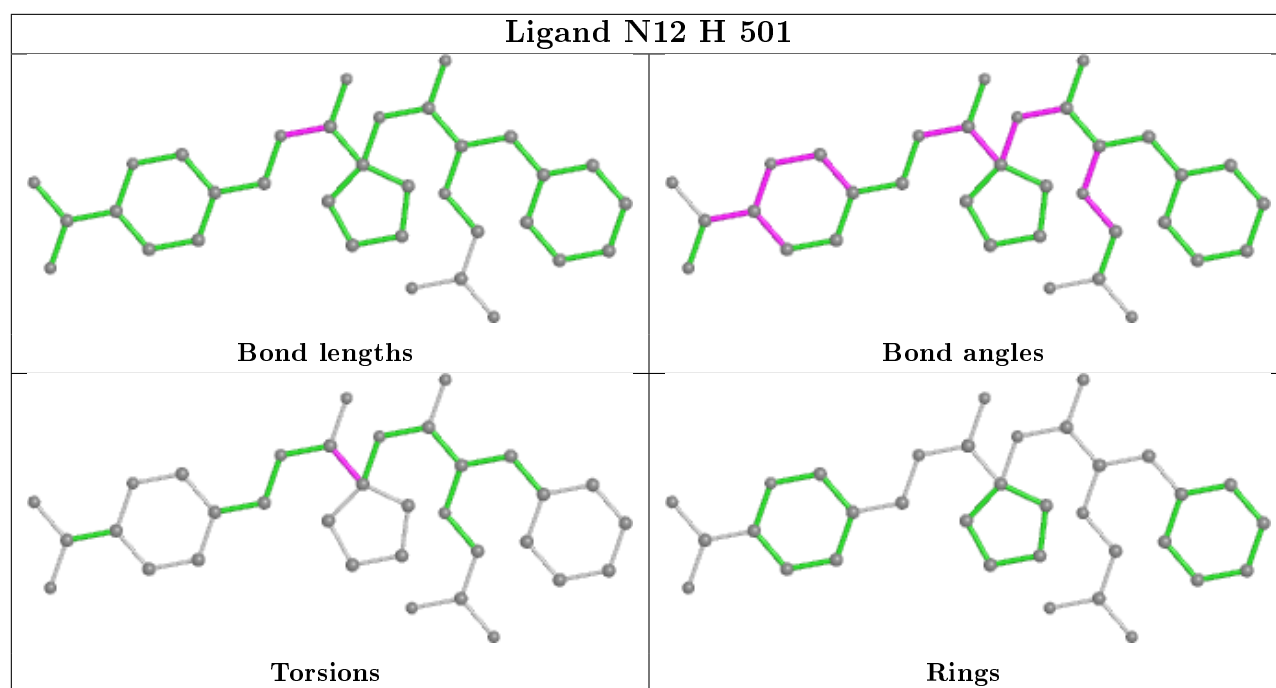
Mol	Chain	Res	Type	Atoms
4	H	501	N12	C32-C15-C16-O17
4	H	501	N12	C32-C15-C16-N18
4	H	501	N12	N14-C15-C16-O17
4	H	501	N12	N14-C15-C16-N18

There are no ring outliers.

1 monomer is involved in 1 short contact:

Mol	Chain	Res	Type	Clashes	Symm-Clashes
4	H	501	N12	1	0

The following is a two-dimensional graphical depiction of Mogul quality analysis of bond lengths, bond angles, torsion angles, and ring geometry for all instances of the Ligand of Interest. In addition, ligands with molecular weight > 250 and outliers as shown on the validation Tables will also be included. For torsion angles, if less than 5% of the Mogul distribution of torsion angles is within 10 degrees of the torsion angle in question, then that torsion angle is considered an outlier. Any bond that is central to one or more torsion angles identified as an outlier by Mogul will be highlighted in the graph. For rings, the root-mean-square deviation (RMSD) between the ring in question and similar rings identified by Mogul is calculated over all ring torsion angles. If the average RMSD is greater than 60 degrees and the minimal RMSD between the ring in question and any Mogul-identified rings is also greater than 60 degrees, then that ring is considered an outlier. The outliers are highlighted in purple. The color gray indicates Mogul did not find sufficient equivalents in the CSD to analyse the geometry.



## 5.7 Other polymers [i](#)

There are no such residues in this entry.

## 5.8 Polymer linkage issues [i](#)

There are no chain breaks in this entry.

## 6 Fit of model and data

### 6.1 Protein, DNA and RNA chains

EDS was not executed - this section is therefore empty.

### 6.2 Non-standard residues in protein, DNA, RNA chains

EDS was not executed - this section is therefore empty.

### 6.3 Carbohydrates

EDS was not executed - this section is therefore empty.

### 6.4 Ligands

EDS was not executed - this section is therefore empty.

### 6.5 Other polymers

EDS was not executed - this section is therefore empty.