



Full wwPDB X-ray Structure Validation Report ⓘ

Oct 16, 2023 – 03:05 AM EDT

PDB ID : 2ASV
Title : X-Ray studies on protein complexes: Enzymatic catalysis in Crystals of E. coli
Maltodextrin Phosphorylase (MalP)
Authors : Geremia, S.; Campagnolo, M.
Deposited on : 2005-08-24
Resolution : 1.95 Å(reported)

This is a Full wwPDB X-ray Structure Validation Report for a publicly released PDB entry.

We welcome your comments at validation@mail.wwpdb.org

A user guide is available at

<https://www.wwpdb.org/validation/2017/XrayValidationReportHelp>

with specific help available everywhere you see the ⓘ symbol.

The types of validation reports are described at

<http://www.wwpdb.org/validation/2017/FAQs#types>.

The following versions of software and data (see [references ⓘ](#)) were used in the production of this report:

MolProbity : 4.02b-467
Mogul : 1.8.5 (274361), CSD as541be (2020)
Xtriage (Phenix) : 1.13
EDS : 2.36
Percentile statistics : 20191225.v01 (using entries in the PDB archive December 25th 2019)
Refmac : 5.8.0158
CCP4 : 7.0.044 (Gargrove)
Ideal geometry (proteins) : Engh & Huber (2001)
Ideal geometry (DNA, RNA) : Parkinson et al. (1996)
Validation Pipeline (wwPDB-VP) : 2.36

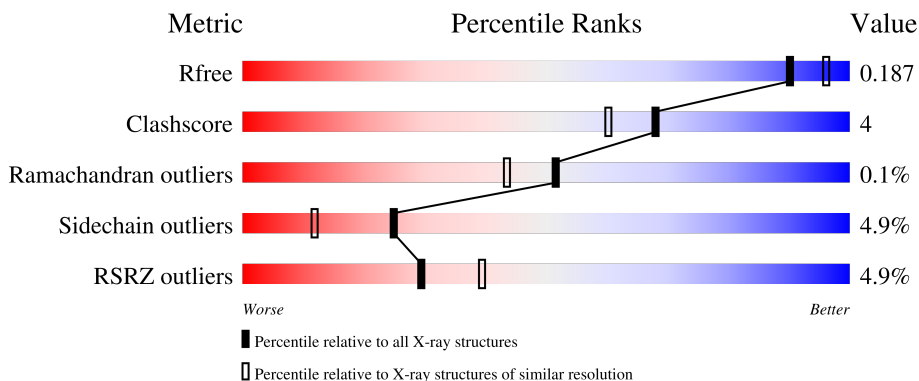
1 Overall quality at a glance i

The following experimental techniques were used to determine the structure:

X-RAY DIFFRACTION

The reported resolution of this entry is 1.95 Å.

Percentile scores (ranging between 0-100) for global validation metrics of the entry are shown in the following graphic. The table shows the number of entries on which the scores are based.



Metric	Whole archive (#Entries)	Similar resolution (#Entries, resolution range(Å))
R_{free}	130704	2580 (1.96-1.96)
Clashscore	141614	2705 (1.96-1.96)
Ramachandran outliers	138981	2678 (1.96-1.96)
Sidechain outliers	138945	2678 (1.96-1.96)
RSRZ outliers	127900	2539 (1.96-1.96)

The table below summarises the geometric issues observed across the polymeric chains and their fit to the electron density. The red, orange, yellow and green segments of the lower bar indicate the fraction of residues that contain outliers for ≥ 3 , 2, 1 and 0 types of geometric quality criteria respectively. A grey segment represents the fraction of residues that are not modelled. The numeric value for each fraction is indicated below the corresponding segment, with a dot representing fractions $\leq 5\%$. The upper red bar (where present) indicates the fraction of residues that have poor fit to the electron density. The numeric value is given above the bar.

Mol	Chain	Length	Quality of chain
1	A	796	 4% 86% 13%
1	B	796	 6% 86% 13%
2	C	5	 40% 40% 20%
2	D	5	 80% 20%

The following table lists non-polymeric compounds, carbohydrate monomers and non-standard

residues in protein, DNA, RNA chains that are outliers for geometric or electron-density-fit criteria:

Mol	Type	Chain	Res	Chirality	Geometry	Clashes	Electron density
2	BGC	C	1	-	-	-	X
2	BGC	D	1	-	-	-	X
3	ASO	B	2998	-	-	X	-

2 Entry composition [i](#)

There are 6 unique types of molecules in this entry. The entry contains 14136 atoms, of which 0 are hydrogens and 0 are deuteriums.

In the tables below, the ZeroOcc column contains the number of atoms modelled with zero occupancy, the AltConf column contains the number of residues with at least one atom in alternate conformation and the Trace column contains the number of residues modelled with at most 2 atoms.

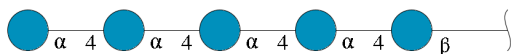
- Molecule 1 is a protein called Maltodextrin phosphorylase.

Mol	Chain	Residues	Atoms					ZeroOcc	AltConf	Trace
			Total	C	N	O	S			
1	A	796	6389	4079	1128	1162	20	0	0	0
1	B	796	6389	4079	1128	1162	20	0	0	0

There are 6 discrepancies between the modelled and reference sequences:

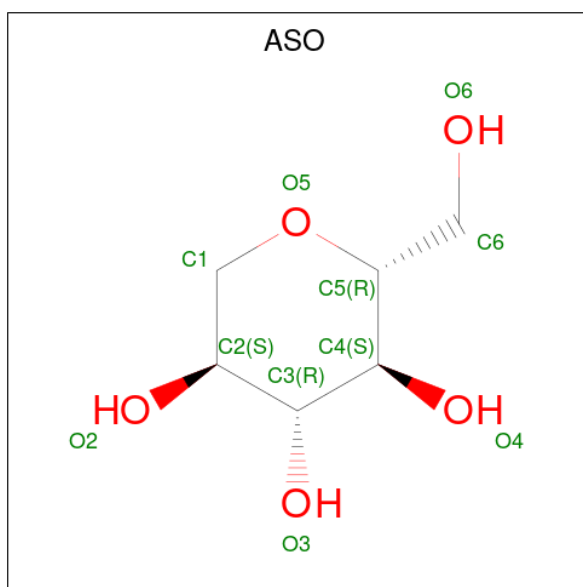
Chain	Residue	Modelled	Actual	Comment	Reference
A	261	ALA	HIS	engineered mutation	UNP P00490
A	262	PHE	THR	engineered mutation	UNP P00490
A	263	GLU	ALA	engineered mutation	UNP P00490
B	261	ALA	HIS	engineered mutation	UNP P00490
B	262	PHE	THR	engineered mutation	UNP P00490
B	263	GLU	ALA	engineered mutation	UNP P00490

- Molecule 2 is an oligosaccharide called alpha-D-glucopyranose-(1-4)-alpha-D-glucopyranose-(1-4)-alpha-D-glucopyranose-(1-4)-alpha-D-glucopyranose-(1-4)-beta-D-glucopyranose.



Mol	Chain	Residues	Atoms			ZeroOcc	AltConf	Trace
			Total	C	O			
2	C	5	56	30	26	0	0	0
2	D	5	56	30	26	0	0	0

- Molecule 3 is 1,5-anhydro-D-glucitol (three-letter code: ASO) (formula: C₆H₁₂O₅).



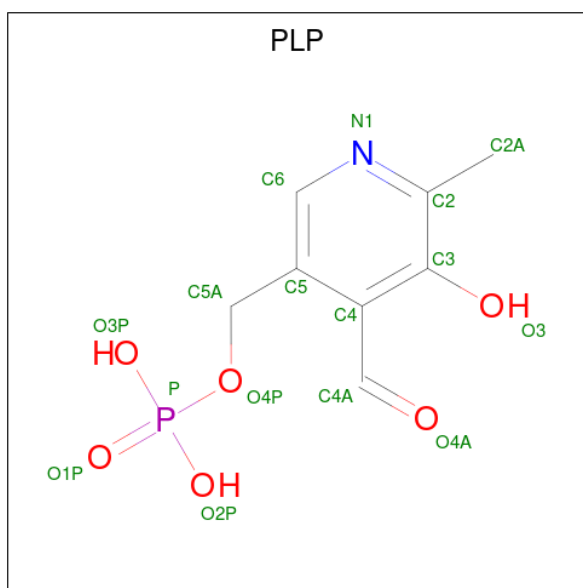
Mol	Chain	Residues	Atoms	ZeroOcc	AltConf
3	A	1	Total C O 11 6 5	0	0
3	B	1	Total C O 11 6 5	0	0

- Molecule 4 is PHOSPHATE ION (three-letter code: PO4) (formula: O_4P).



Mol	Chain	Residues	Atoms	ZeroOcc	AltConf
4	A	1	Total O P 5 4 1	0	0
4	B	1	Total O P 5 4 1	0	0

- Molecule 5 is PYRIDOXAL-5'-PHOSPHATE (three-letter code: PLP) (formula: C₈H₁₀NO₆P).



Mol	Chain	Residues	Atoms					ZeroOcc	AltConf
			Total	C	N	O	P		
5	A	1	15	8	1	5	1	0	0
5	B	1	15	8	1	5	1	0	0

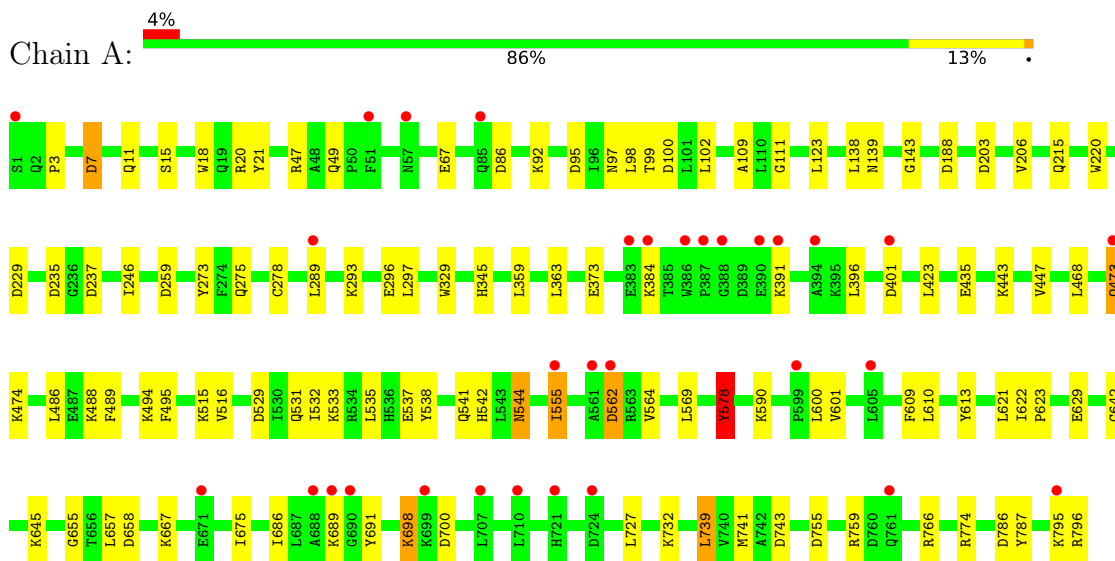
- Molecule 6 is water.

Mol	Chain	Residues	Atoms		ZeroOcc	AltConf
			Total	O		
6	A	613	613	613	0	0
6	B	571	571	571	0	0

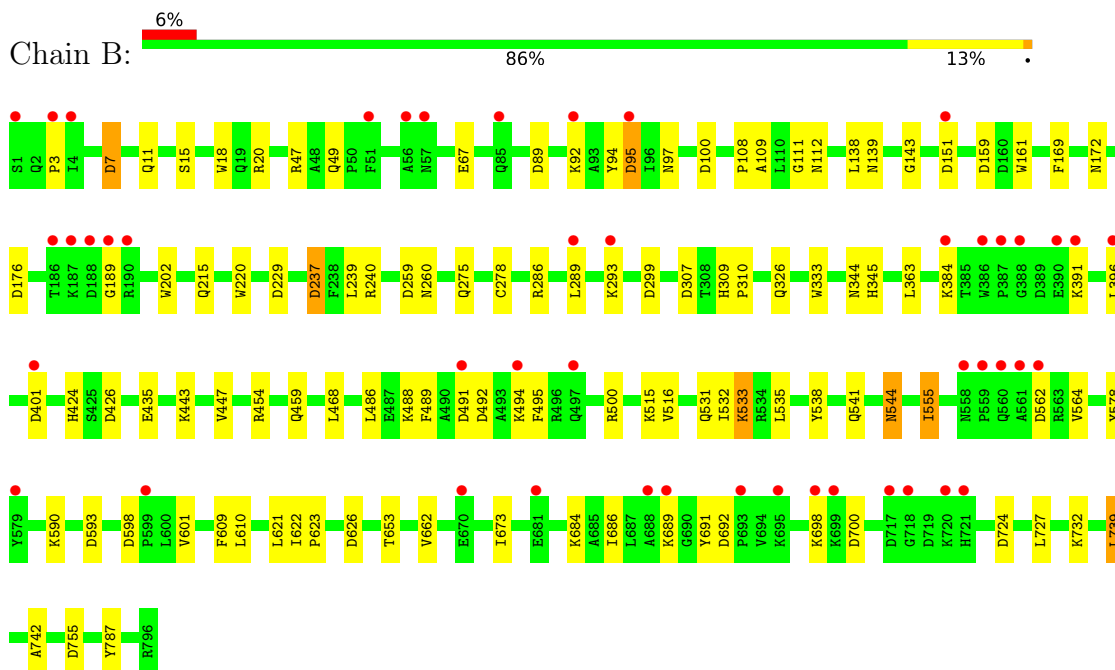
3 Residue-property plots [i](#)

These plots are drawn for all protein, RNA, DNA and oligosaccharide chains in the entry. The first graphic for a chain summarises the proportions of the various outlier classes displayed in the second graphic. The second graphic shows the sequence view annotated by issues in geometry and electron density. Residues are color-coded according to the number of geometric quality criteria for which they contain at least one outlier: green = 0, yellow = 1, orange = 2 and red = 3 or more. A red dot above a residue indicates a poor fit to the electron density ($RSRZ > 2$). Stretches of 2 or more consecutive residues without any outlier are shown as a green connector. Residues present in the sample, but not in the model, are shown in grey.

- Molecule 1: Maltodextrin phosphorylase

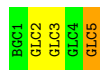


- Molecule 1: Maltodextrin phosphorylase




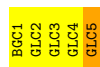
- Molecule 2: alpha-D-glucopyranose-(1-4)-alpha-D-glucopyranose-(1-4)-alpha-D-glucopyranose-(1-4)-alpha-D-glucopyranose-(1-4)-beta-D-glucopyranose

Chain C:  40% 40% 20%



- Molecule 2: alpha-D-glucopyranose-(1-4)-alpha-D-glucopyranose-(1-4)-alpha-D-glucopyranose-(1-4)-alpha-D-glucopyranose-(1-4)-beta-D-glucopyranose

Chain D:  80% 20%



4 Data and refinement statistics

Property	Value	Source
Space group	P 21 21 21	Depositor
Cell constants a, b, c, α , β , γ	74.33Å 104.72Å 214.79Å 90.00° 90.00° 90.00°	Depositor
Resolution (Å)	15.00 – 1.95 15.00 – 1.95	Depositor EDS
% Data completeness (in resolution range)	97.5 (15.00-1.95) 97.6 (15.00-1.95)	Depositor EDS
R_{merge}	0.12	Depositor
R_{sym}	(Not available)	Depositor
$\langle I/\sigma(I) \rangle$ ¹	1.42 (at 1.95Å)	Xtrriage
Refinement program	REFMAC 5.1.24	Depositor
R, R_{free}	0.179 , 0.226 0.191 , 0.187	Depositor DCC
R_{free} test set	6003 reflections (5.01%)	wwPDB-VP
Wilson B-factor (Å ²)	25.8	Xtrriage
Anisotropy	0.346	Xtrriage
Bulk solvent k_{sol} (e/Å ³), B_{sol} (Å ²)	0.40 , 55.0	EDS
L-test for twinning ²	$\langle L \rangle = 0.44$, $\langle L^2 \rangle = 0.26$	Xtrriage
Estimated twinning fraction	No twinning to report.	Xtrriage
F_o, F_c correlation	0.95	EDS
Total number of atoms	14136	wwPDB-VP
Average B, all atoms (Å ²)	34.0	wwPDB-VP

Xtrriage's analysis on translational NCS is as follows: *The largest off-origin peak in the Patterson function is 2.99% of the height of the origin peak. No significant pseudotranslation is detected.*

¹Intensities estimated from amplitudes.

²Theoretical values of $\langle |L| \rangle$, $\langle L^2 \rangle$ for acentric reflections are 0.5, 0.333 respectively for untwinned datasets, and 0.375, 0.2 for perfectly twinned datasets.

5 Model quality [i](#)

5.1 Standard geometry [i](#)

Bond lengths and bond angles in the following residue types are not validated in this section: PO4, BGC, GLC, PLP, ASO

The Z score for a bond length (or angle) is the number of standard deviations the observed value is removed from the expected value. A bond length (or angle) with $|Z| > 5$ is considered an outlier worth inspection. RMSZ is the root-mean-square of all Z scores of the bond lengths (or angles).

Mol	Chain	Bond lengths		Bond angles	
		RMSZ	# Z >5	RMSZ	# Z >5
1	A	0.90	2/6539 (0.0%)	0.91	16/8865 (0.2%)
1	B	0.90	1/6539 (0.0%)	0.92	25/8865 (0.3%)
All	All	0.90	3/13078 (0.0%)	0.92	41/17730 (0.2%)

All (3) bond length outliers are listed below:

Mol	Chain	Res	Type	Atoms	Z	Observed(Å)	Ideal(Å)
1	A	273	TYR	CE2-CZ	-5.94	1.30	1.38
1	A	578	TYR	CD2-CE2	-5.72	1.30	1.39
1	B	333	TRP	CB-CG	-5.14	1.41	1.50

All (41) bond angle outliers are listed below:

Mol	Chain	Res	Type	Atoms	Z	Observed(°)	Ideal(°)
1	B	299	ASP	CB-CG-OD2	7.45	125.00	118.30
1	B	307	ASP	CB-CG-OD2	7.20	124.78	118.30
1	B	626	ASP	CB-CG-OD2	6.74	124.37	118.30
1	A	259	ASP	CB-CG-OD2	6.49	124.14	118.30
1	B	500	ARG	NE-CZ-NH1	6.43	123.52	120.30
1	B	259	ASP	CB-CG-OD2	6.43	124.08	118.30
1	B	176	ASP	CB-CG-OD1	6.39	124.05	118.30
1	A	235	ASP	CB-CG-OD2	6.37	124.03	118.30
1	A	229	ASP	CB-CG-OD2	6.31	123.98	118.30
1	A	786	ASP	CB-CG-OD2	6.09	123.78	118.30
1	B	229	ASP	CB-CG-OD2	6.01	123.71	118.30
1	B	237	ASP	CB-CG-OD1	5.96	123.66	118.30
1	A	562	ASP	CB-CG-OD2	5.95	123.65	118.30
1	B	401	ASP	CB-CG-OD2	5.88	123.59	118.30
1	B	151	ASP	CB-CG-OD2	5.87	123.58	118.30
1	A	86	ASP	CB-CG-OD2	5.81	123.53	118.30

Continued on next page...

Continued from previous page...

Mol	Chain	Res	Type	Atoms	Z	Observed(°)	Ideal(°)
1	B	95	ASP	CB-CG-OD2	5.78	123.50	118.30
1	A	237	ASP	CB-CG-OD2	5.72	123.44	118.30
1	B	598	ASP	CB-CG-OD2	5.68	123.41	118.30
1	A	95	ASP	CB-CG-OD2	5.62	123.36	118.30
1	B	700	ASP	CB-CG-OD2	5.57	123.31	118.30
1	B	159	ASP	CB-CG-OD2	5.54	123.28	118.30
1	B	7	ASP	CB-CG-OD2	5.53	123.28	118.30
1	A	188	ASP	CB-CG-OD2	5.48	123.23	118.30
1	A	7	ASP	CB-CG-OD2	5.40	123.16	118.30
1	B	426	ASP	CB-CG-OD2	5.35	123.11	118.30
1	A	658	ASP	CB-CG-OD2	5.34	123.11	118.30
1	B	89	ASP	CB-CG-OD2	5.33	123.09	118.30
1	B	562	ASP	CB-CG-OD2	5.30	123.07	118.30
1	A	203	ASP	CB-CG-OD2	5.29	123.06	118.30
1	B	286	ARG	NE-CZ-NH1	5.23	122.92	120.30
1	A	796	ARG	NE-CZ-NH2	-5.21	117.69	120.30
1	A	743	ASP	CB-CG-OD2	5.19	122.97	118.30
1	B	492	ASP	CB-CG-OD2	5.18	122.96	118.30
1	B	692	ASP	CB-CG-OD2	5.14	122.93	118.30
1	B	286	ARG	NE-CZ-NH2	-5.10	117.75	120.30
1	A	401	ASP	CB-CG-OD2	5.07	122.86	118.30
1	A	700	ASP	CB-CG-OD2	5.07	122.86	118.30
1	B	491	ASP	CB-CG-OD2	5.05	122.85	118.30
1	B	724	ASP	CB-CG-OD2	5.05	122.85	118.30
1	B	593	ASP	CB-CG-OD2	5.02	122.81	118.30

There are no chirality outliers.

There are no planarity outliers.

5.2 Too-close contacts

In the following table, the Non-H and H(model) columns list the number of non-hydrogen atoms and hydrogen atoms in the chain respectively. The H(added) column lists the number of hydrogen atoms added and optimized by MolProbity. The Clashes column lists the number of clashes within the asymmetric unit, whereas Symm-Clashes lists symmetry-related clashes.

Mol	Chain	Non-H	H(model)	H(added)	Clashes	Symm-Clashes
1	A	6389	0	6333	52	0
1	B	6389	0	6333	43	0
2	C	56	0	48	2	0
2	D	56	0	48	3	0

Continued on next page...

Continued from previous page...

Mol	Chain	Non-H	H(model)	H(added)	Clashes	Symm-Clashes
3	A	11	0	11	3	0
3	B	11	0	12	6	0
4	A	5	0	0	0	0
4	B	5	0	0	0	0
5	A	15	0	6	0	0
5	B	15	0	6	0	0
6	A	613	0	0	8	0
6	B	571	0	0	6	0
All	All	14136	0	12797	97	0

The all-atom clashscore is defined as the number of clashes found per 1000 atoms (including hydrogen atoms). The all-atom clashscore for this structure is 4.

All (97) close contacts within the same asymmetric unit are listed below, sorted by their clash magnitude.

Atom-1	Atom-2	Interatomic distance (Å)	Clash overlap (Å)
3:A:1998:ASO:H11	2:C:5:GLC:O4	1.47	1.15
3:B:2998:ASO:H11	2:D:5:GLC:O4	1.65	0.95
1:B:345:HIS:O	3:B:2998:ASO:H12	1.74	0.86
1:A:97:ASN:HD22	1:A:100:ASP:H	1.33	0.76
3:A:1998:ASO:H11	2:C:5:GLC:HO4	1.49	0.74
1:A:3:PRO:HD2	6:A:2469:HOH:O	1.94	0.67
1:B:7:ASP:O	1:B:11:GLN:HG2	1.95	0.66
1:A:468:LEU:CD2	1:A:486:LEU:HD11	2.26	0.65
1:B:97:ASN:HD22	1:B:100:ASP:H	1.45	0.62
1:A:345:HIS:O	3:A:1998:ASO:H12	2.00	0.62
1:A:47:ARG:HD3	6:A:2181:HOH:O	1.99	0.62
1:B:468:LEU:CD2	1:B:486:LEU:HD11	2.30	0.61
1:A:21:TYR:O	1:B:172:ASN:HB2	2.01	0.61
1:B:3:PRO:HB3	1:B:49:GLN:OE1	2.00	0.61
3:B:2998:ASO:H11	2:D:5:GLC:C4	2.31	0.60
1:A:3:PRO:HB3	1:A:49:GLN:OE1	2.02	0.59
1:A:11:GLN:HG3	6:A:2565:HOH:O	2.03	0.58
1:A:531:GLN:HE22	1:A:541:GLN:HA	1.67	0.58
3:B:2998:ASO:H11	2:D:5:GLC:HO4	1.66	0.58
1:A:691:TYR:CE2	1:A:739:LEU:HD22	2.39	0.58
1:B:691:TYR:CE2	1:B:739:LEU:HD22	2.39	0.58
1:A:97:ASN:ND2	1:A:100:ASP:H	2.00	0.57
1:B:237:ASP:OD2	1:B:240:ARG:NH1	2.35	0.56
1:A:447:VAL:HG11	1:A:787:TYR:CD2	2.41	0.56
1:B:189:GLY:HA2	6:B:3544:HOH:O	2.06	0.55

Continued on next page...

Continued from previous page...

Atom-1	Atom-2	Interatomic distance (Å)	Clash overlap (Å)
1:A:7:ASP:O	1:A:11:GLN:HG2	2.07	0.54
1:A:610:LEU:HD12	1:A:621:LEU:HD21	1.89	0.54
1:B:220:TRP:CD2	1:B:278:CYS:HB3	2.42	0.54
1:B:684:LYS:NZ	6:B:3242:HOH:O	2.42	0.53
1:B:345:HIS:O	3:B:2998:ASO:C1	2.53	0.53
1:A:532:ILE:HG21	1:A:621:LEU:HD13	1.91	0.53
1:A:246:ILE:HD13	1:B:239:LEU:HD12	1.91	0.53
1:A:138:LEU:HD21	1:A:275:GLN:HB2	1.93	0.51
1:B:97:ASN:ND2	1:B:100:ASP:H	2.08	0.51
1:A:655:GLY:O	1:A:675:ILE:HA	2.11	0.50
1:B:555:ILE:HD11	1:B:601:VAL:HG22	1.93	0.50
1:A:562:ASP:O	1:A:759:ARG:NH2	2.42	0.50
1:A:473:GLN:OE1	1:A:474:LYS:HE2	2.12	0.50
1:A:396:LEU:HD21	1:A:435:GLU:HB2	1.94	0.49
1:B:544:ASN:C	1:B:544:ASN:HD22	2.15	0.49
1:B:344:ASN:O	1:B:424:HIS:HE1	1.96	0.49
1:A:555:ILE:HD11	1:A:601:VAL:HG22	1.95	0.48
1:B:67:GLU:HB2	1:B:111:GLY:HA2	1.95	0.48
1:A:447:VAL:HG11	1:A:787:TYR:CE2	2.49	0.48
1:A:293:LYS:O	1:A:296:GLU:HG2	2.14	0.47
1:A:359:LEU:HD12	6:A:2451:HOH:O	2.15	0.47
1:A:67:GLU:HB2	1:A:111:GLY:HA2	1.96	0.47
1:A:423:LEU:O	1:A:423:LEU:HD23	2.15	0.47
1:B:610:LEU:HD12	1:B:621:LEU:HD21	1.97	0.47
1:B:653:THR:HB	1:B:673:ILE:HG13	1.96	0.47
1:B:220:TRP:CE2	1:B:278:CYS:HB3	2.50	0.46
1:A:766:ARG:HD2	6:A:2218:HOH:O	2.16	0.46
1:B:447:VAL:HG11	1:B:787:TYR:CD2	2.50	0.46
1:B:109:ALA:HB1	1:B:143:GLY:HA3	1.97	0.45
1:A:489:PHE:HB3	1:A:495:PHE:CG	2.52	0.45
1:B:138:LEU:HD21	1:B:275:GLN:HB2	1.99	0.45
1:B:15:SER:HA	1:B:18:TRP:NE1	2.32	0.44
1:B:237:ASP:OD2	1:B:240:ARG:HD2	2.18	0.44
1:B:531:GLN:HE22	1:B:541:GLN:HA	1.82	0.44
1:A:3:PRO:HB3	1:A:49:GLN:CD	2.38	0.43
1:A:473:GLN:HE21	1:A:473:GLN:HB2	1.59	0.43
1:B:169:PHE:CE1	1:B:202:TRP:HB3	2.53	0.43
1:A:220:TRP:CD2	1:A:278:CYS:HB3	2.54	0.43
1:B:489:PHE:HB3	1:B:495:PHE:CG	2.53	0.43
1:B:345:HIS:O	3:B:2998:ASO:H2	2.18	0.43
1:A:691:TYR:OH	1:A:741:MET:HB2	2.19	0.43

Continued on next page...

Continued from previous page...

Atom-1	Atom-2	Interatomic distance (Å)	Clash overlap (Å)
1:A:3:PRO:CD	6:A:2469:HOH:O	2.62	0.43
1:B:47:ARG:HD3	6:B:3205:HOH:O	2.19	0.43
1:A:11:GLN:CG	6:A:2565:HOH:O	2.66	0.43
1:B:108:PRO:HA	1:B:161:TRP:CE3	2.54	0.42
1:A:97:ASN:HD21	1:A:99:THR:HB	1.83	0.42
1:A:246:ILE:CD1	1:B:239:LEU:HD12	2.49	0.42
1:A:544:ASN:ND2	6:A:2050:HOH:O	2.52	0.42
1:A:544:ASN:C	1:A:544:ASN:HD22	2.22	0.42
1:A:622:ILE:N	1:A:623:PRO:CD	2.83	0.42
1:B:532:ILE:HG21	1:B:621:LEU:HD13	2.00	0.42
1:B:396:LEU:HD21	1:B:435:GLU:HB2	2.01	0.42
1:A:98:LEU:O	1:A:102:LEU:HG	2.20	0.42
1:B:459:GLN:NE2	6:B:3263:HOH:O	2.46	0.41
1:B:94:TYR:O	1:B:95:ASP:HB2	2.20	0.41
1:A:109:ALA:HB1	1:A:143:GLY:HA3	2.03	0.41
1:A:529:ASP:OD1	1:A:629:GLU:OE2	2.38	0.41
1:A:123:LEU:HB3	1:A:206:VAL:HG11	2.01	0.41
1:A:532:ILE:HB	1:A:613:TYR:CZ	2.55	0.41
1:A:698:LYS:HA	1:A:698:LYS:HD2	1.93	0.41
1:A:657:LEU:HD23	1:A:657:LEU:HA	1.97	0.41
1:B:590:LYS:HA	1:B:590:LYS:HD2	1.83	0.41
1:B:260:ASN:ND2	6:B:3437:HOH:O	2.54	0.41
1:A:15:SER:HA	1:A:18:TRP:NE1	2.36	0.41
1:B:309:HIS:N	1:B:310:PRO:CD	2.84	0.41
1:A:329:TRP:CZ3	1:A:373:GLU:HG2	2.57	0.41
1:B:739:LEU:HB3	1:B:742:ALA:HB3	2.03	0.41
1:A:642:GLY:HA2	1:A:645:LYS:HD2	2.04	0.40
1:A:537:GLU:HB2	1:A:578:TYR:OH	2.22	0.40
1:B:112:ASN:OD1	6:B:3563:HOH:O	2.22	0.40
1:B:622:ILE:N	1:B:623:PRO:CD	2.84	0.40
1:A:667:LYS:O	1:A:774:ARG:HD3	2.22	0.40

There are no symmetry-related clashes.

5.3 Torsion angles

5.3.1 Protein backbone

In the following table, the Percentiles column shows the percent Ramachandran outliers of the chain as a percentile score with respect to all X-ray entries followed by that with respect to entries of similar resolution.

The Analysed column shows the number of residues for which the backbone conformation was analysed, and the total number of residues.

Mol	Chain	Analysed	Favoured	Allowed	Outliers	Percentiles	
1	A	794/796 (100%)	770 (97%)	23 (3%)	1 (0%)	51	43
1	B	794/796 (100%)	770 (97%)	23 (3%)	1 (0%)	51	43
All	All	1588/1592 (100%)	1540 (97%)	46 (3%)	2 (0%)	51	43

All (2) Ramachandran outliers are listed below:

Mol	Chain	Res	Type
1	A	533	LYS
1	B	533	LYS

5.3.2 Protein sidechains [i](#)

In the following table, the Percentiles column shows the percent sidechain outliers of the chain as a percentile score with respect to all X-ray entries followed by that with respect to entries of similar resolution.

The Analysed column shows the number of residues for which the sidechain conformation was analysed, and the total number of residues.

Mol	Chain	Analysed	Rotameric	Outliers	Percentiles	
1	A	667/667 (100%)	633 (95%)	34 (5%)	24	11
1	B	667/667 (100%)	635 (95%)	32 (5%)	25	12
All	All	1334/1334 (100%)	1268 (95%)	66 (5%)	25	12

All (66) residues with a non-rotameric sidechain are listed below:

Mol	Chain	Res	Type
1	A	20	ARG
1	A	92	LYS
1	A	139	ASN
1	A	215	GLN
1	A	289	LEU
1	A	297	LEU
1	A	363	LEU
1	A	384	LYS
1	A	391	LYS
1	A	443	LYS
1	A	473	GLN

Continued on next page...

Continued from previous page...

Mol	Chain	Res	Type
1	A	488	LYS
1	A	494	LYS
1	A	515	LYS
1	A	516	VAL
1	A	535	LEU
1	A	538	TYR
1	A	542	HIS
1	A	544	ASN
1	A	555	ILE
1	A	564	VAL
1	A	569	LEU
1	A	578	TYR
1	A	590	LYS
1	A	600	LEU
1	A	609	PHE
1	A	686	ILE
1	A	689	LYS
1	A	698	LYS
1	A	727	LEU
1	A	732	LYS
1	A	739	LEU
1	A	755	ASP
1	A	795	LYS
1	B	20	ARG
1	B	92	LYS
1	B	139	ASN
1	B	215	GLN
1	B	289	LEU
1	B	293	LYS
1	B	326	GLN
1	B	363	LEU
1	B	384	LYS
1	B	391	LYS
1	B	443	LYS
1	B	454	ARG
1	B	488	LYS
1	B	494	LYS
1	B	515	LYS
1	B	516	VAL
1	B	533	LYS
1	B	535	LEU
1	B	538	TYR

Continued on next page...

Continued from previous page...

Mol	Chain	Res	Type
1	B	544	ASN
1	B	555	ILE
1	B	564	VAL
1	B	578	TYR
1	B	609	PHE
1	B	662	VAL
1	B	686	ILE
1	B	689	LYS
1	B	698	LYS
1	B	727	LEU
1	B	732	LYS
1	B	739	LEU
1	B	755	ASP

Sometimes sidechains can be flipped to improve hydrogen bonding and reduce clashes. All (24) such sidechains are listed below:

Mol	Chain	Res	Type
1	A	9	GLN
1	A	97	ASN
1	A	112	ASN
1	A	139	ASN
1	A	178	GLN
1	A	221	GLN
1	A	260	ASN
1	A	446	ASN
1	A	459	GLN
1	A	531	GLN
1	A	544	ASN
1	A	678	HIS
1	B	9	GLN
1	B	57	ASN
1	B	97	ASN
1	B	112	ASN
1	B	139	ASN
1	B	178	GLN
1	B	221	GLN
1	B	260	ASN
1	B	446	ASN
1	B	459	GLN
1	B	531	GLN
1	B	544	ASN

5.3.3 RNA [i](#)

There are no RNA molecules in this entry.

5.4 Non-standard residues in protein, DNA, RNA chains [i](#)

There are no non-standard protein/DNA/RNA residues in this entry.

5.5 Carbohydrates [i](#)

10 monosaccharides are modelled in this entry.

In the following table, the Counts columns list the number of bonds (or angles) for which Mogul statistics could be retrieved, the number of bonds (or angles) that are observed in the model and the number of bonds (or angles) that are defined in the Chemical Component Dictionary. The Link column lists molecule types, if any, to which the group is linked. The Z score for a bond length (or angle) is the number of standard deviations the observed value is removed from the expected value. A bond length (or angle) with $|Z| > 2$ is considered an outlier worth inspection. RMSZ is the root-mean-square of all Z scores of the bond lengths (or angles).

Mol	Type	Chain	Res	Link	Bond lengths			Bond angles		
					Counts	RMSZ	$\# Z > 2$	Counts	RMSZ	$\# Z > 2$
2	BGC	C	1	2	12,12,12	0.55	0	17,17,17	0.97	0
2	GLC	C	2	2	11,11,12	0.98	0	15,15,17	1.44	3 (20%)
2	GLC	C	3	2	11,11,12	0.91	0	15,15,17	1.17	2 (13%)
2	GLC	C	4	2	11,11,12	0.92	0	15,15,17	0.80	0
2	GLC	C	5	2	11,11,12	0.96	0	15,15,17	1.48	2 (13%)
2	BGC	D	1	2	12,12,12	0.62	0	17,17,17	1.01	1 (5%)
2	GLC	D	2	2	11,11,12	0.53	0	15,15,17	1.22	2 (13%)
2	GLC	D	3	2	11,11,12	0.82	0	15,15,17	1.51	1 (6%)
2	GLC	D	4	2	11,11,12	0.78	0	15,15,17	1.34	3 (20%)
2	GLC	D	5	2	11,11,12	0.86	0	15,15,17	1.75	5 (33%)

In the following table, the Chirals column lists the number of chiral outliers, the number of chiral centers analysed, the number of these observed in the model and the number defined in the Chemical Component Dictionary. Similar counts are reported in the Torsion and Rings columns. '-' means no outliers of that kind were identified.

Mol	Type	Chain	Res	Link	Chirals	Torsions	Rings
2	BGC	C	1	2	-	0/2/22/22	0/1/1/1
2	GLC	C	2	2	-	0/2/19/22	0/1/1/1
2	GLC	C	3	2	-	0/2/19/22	0/1/1/1

Continued on next page...

Continued from previous page...

Mol	Type	Chain	Res	Link	Chirals	Torsions	Rings
2	GLC	C	4	2	-	0/2/19/22	0/1/1/1
2	GLC	C	5	2	-	0/2/19/22	0/1/1/1
2	BGC	D	1	2	-	0/2/22/22	0/1/1/1
2	GLC	D	2	2	-	0/2/19/22	0/1/1/1
2	GLC	D	3	2	-	0/2/19/22	0/1/1/1
2	GLC	D	4	2	-	0/2/19/22	0/1/1/1
2	GLC	D	5	2	-	2/2/19/22	0/1/1/1

There are no bond length outliers.

All (19) bond angle outliers are listed below:

Mol	Chain	Res	Type	Atoms	Z	Observed(°)	Ideal(°)
2	D	3	GLC	C1-O5-C5	4.21	117.89	112.19
2	C	5	GLC	O2-C2-C3	3.53	117.22	110.14
2	D	5	GLC	O3-C3-C2	-3.25	103.77	109.99
2	C	2	GLC	O5-C1-C2	-2.94	106.24	110.77
2	C	5	GLC	O5-C1-C2	2.67	114.89	110.77
2	D	4	GLC	O2-C2-C3	-2.54	105.05	110.14
2	C	3	GLC	C1-C2-C3	2.53	112.77	109.67
2	D	5	GLC	O4-C4-C5	-2.45	103.21	109.30
2	D	5	GLC	O4-C4-C3	2.35	115.78	110.35
2	C	2	GLC	C1-C2-C3	2.34	112.54	109.67
2	D	4	GLC	O3-C3-C2	-2.29	105.60	109.99
2	D	4	GLC	O2-C2-C1	2.24	113.73	109.15
2	D	2	GLC	C1-C2-C3	2.15	112.31	109.67
2	C	2	GLC	C1-O5-C5	2.10	115.04	112.19
2	D	5	GLC	O2-C2-C3	2.08	114.31	110.14
2	D	1	BGC	O3-C3-C2	-2.08	105.55	110.35
2	D	2	GLC	O2-C2-C3	-2.03	106.06	110.14
2	C	3	GLC	O5-C1-C2	-2.02	107.65	110.77
2	D	5	GLC	C2-C3-C4	-2.01	107.41	110.89

There are no chirality outliers.

All (2) torsion outliers are listed below:

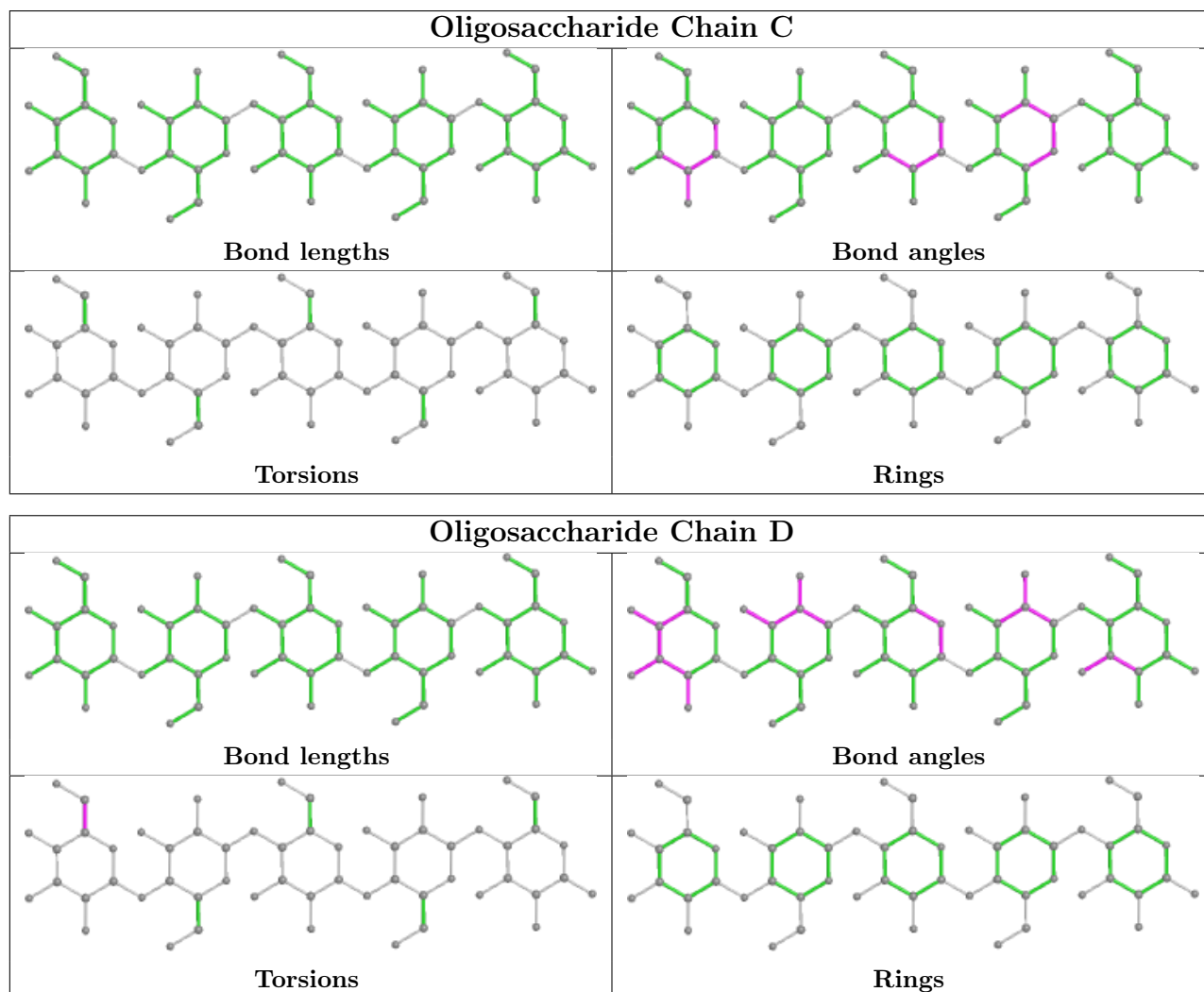
Mol	Chain	Res	Type	Atoms
2	D	5	GLC	C4-C5-C6-O6
2	D	5	GLC	O5-C5-C6-O6

There are no ring outliers.

2 monomers are involved in 5 short contacts:

Mol	Chain	Res	Type	Clashes	Symm-Clashes
2	C	5	GLC	2	0
2	D	5	GLC	3	0

The following is a two-dimensional graphical depiction of Mogul quality analysis of bond lengths, bond angles, torsion angles, and ring geometry for oligosaccharide.



5.6 Ligand geometry [i](#)

6 ligands are modelled in this entry.

In the following table, the Counts columns list the number of bonds (or angles) for which Mogul statistics could be retrieved, the number of bonds (or angles) that are observed in the model and the number of bonds (or angles) that are defined in the Chemical Component Dictionary. The Link column lists molecule types, if any, to which the group is linked. The Z score for a bond length (or angle) is the number of standard deviations the observed value is removed from the expected value. A bond length (or angle) with $|Z| > 2$ is considered an outlier worth inspection. RMSZ is the root-mean-square of all Z scores of the bond lengths (or angles).

Mol	Type	Chain	Res	Link	Bond lengths			Bond angles		
					Counts	RMSZ	# Z > 2	Counts	RMSZ	# Z > 2
5	PLP	A	900	1	15,15,16	1.77	3 (20%)	20,22,23	1.81	6 (30%)
3	ASO	B	2998	-	11,11,11	3.45	4 (36%)	15,15,15	3.65	5 (33%)
5	PLP	B	900	1	15,15,16	1.75	4 (26%)	20,22,23	1.96	6 (30%)
4	PO4	A	999	-	4,4,4	0.84	0	6,6,6	1.14	0
4	PO4	B	1999	-	4,4,4	1.09	0	6,6,6	0.91	0
3	ASO	A	1998	-	11,11,11	3.57	4 (36%)	15,15,15	4.02	7 (46%)

In the following table, the Chirals column lists the number of chiral outliers, the number of chiral centers analysed, the number of these observed in the model and the number defined in the Chemical Component Dictionary. Similar counts are reported in the Torsion and Rings columns. '-' means no outliers of that kind were identified.

Mol	Type	Chain	Res	Link	Chirals	Torsions	Rings
3	ASO	B	2998	-	-	0/2/19/19	0/1/1/1
5	PLP	B	900	1	-	0/6/6/8	0/1/1/1
5	PLP	A	900	1	-	1/6/6/8	0/1/1/1
3	ASO	A	1998	-	-	2/2/19/19	0/1/1/1

All (15) bond length outliers are listed below:

Mol	Chain	Res	Type	Atoms	Z	Observed(Å)	Ideal(Å)
3	A	1998	ASO	O5-C1	-10.41	1.27	1.43
3	B	2998	ASO	O5-C1	-9.92	1.27	1.43
5	B	900	PLP	C3-C2	-4.92	1.36	1.40
5	A	900	PLP	C3-C2	-4.08	1.36	1.40
3	A	1998	ASO	O2-C2	-3.52	1.35	1.43
3	B	2998	ASO	O5-C5	3.41	1.50	1.43
3	A	1998	ASO	C1-C2	-3.10	1.45	1.52
5	A	900	PLP	C5-C4	-3.09	1.37	1.40
3	B	2998	ASO	C1-C2	-2.96	1.45	1.52
3	B	2998	ASO	O2-C2	-2.94	1.37	1.43
5	A	900	PLP	C4A-C4	-2.81	1.45	1.51
5	B	900	PLP	C4A-C4	-2.57	1.46	1.51
5	B	900	PLP	C6-N1	2.25	1.39	1.34
3	A	1998	ASO	O5-C5	2.09	1.47	1.43
5	B	900	PLP	C5-C4	-2.05	1.38	1.40

All (24) bond angle outliers are listed below:

Mol	Chain	Res	Type	Atoms	Z	Observed(°)	Ideal(°)
3	A	1998	ASO	C1-O5-C5	11.33	127.54	112.19

Continued on next page...

Continued from previous page...

Mol	Chain	Res	Type	Atoms	Z	Observed(°)	Ideal(°)
3	B	2998	ASO	C1-O5-C5	8.94	124.30	112.19
3	B	2998	ASO	O5-C1-C2	8.05	123.20	110.77
3	A	1998	ASO	O5-C1-C2	6.82	121.30	110.77
3	A	1998	ASO	C1-C2-C3	4.83	115.61	109.67
5	B	900	PLP	C3-C4-C5	4.59	123.70	118.74
3	B	2998	ASO	C1-C2-C3	4.52	115.23	109.67
3	A	1998	ASO	O2-C2-C3	4.46	119.07	110.14
3	B	2998	ASO	O2-C2-C3	4.37	118.90	110.14
5	A	900	PLP	C3-C2-N1	-3.88	115.76	120.77
5	B	900	PLP	C4A-C4-C3	-3.39	114.76	120.50
5	A	900	PLP	C3-C4-C5	3.30	122.30	118.74
5	B	900	PLP	C6-C5-C4	-3.28	115.58	118.16
5	B	900	PLP	C3-C2-N1	-3.17	116.68	120.77
5	A	900	PLP	C4A-C4-C3	-3.10	115.25	120.50
3	A	1998	ASO	C6-C5-C4	3.02	120.08	113.00
5	B	900	PLP	C6-N1-C2	2.95	124.63	119.17
5	A	900	PLP	C6-N1-C2	2.79	124.34	119.17
5	A	900	PLP	C2A-C2-N1	2.47	122.50	117.67
5	A	900	PLP	C6-C5-C4	-2.45	116.23	118.16
5	B	900	PLP	C5-C6-N1	-2.43	119.78	123.82
3	A	1998	ASO	C2-C3-C4	2.28	114.84	110.89
3	B	2998	ASO	O3-C3-C2	-2.14	105.90	109.99
3	A	1998	ASO	O3-C3-C2	-2.06	106.05	109.99

There are no chirality outliers.

All (3) torsion outliers are listed below:

Mol	Chain	Res	Type	Atoms
3	A	1998	ASO	O5-C5-C6-O6
3	A	1998	ASO	C4-C5-C6-O6
5	A	900	PLP	C6-C5-C5A-O4P

There are no ring outliers.

2 monomers are involved in 9 short contacts:

Mol	Chain	Res	Type	Clashes	Symm-Clashes
3	B	2998	ASO	6	0
3	A	1998	ASO	3	0

5.7 Other polymers [i](#)

There are no such residues in this entry.

5.8 Polymer linkage issues [i](#)

There are no chain breaks in this entry.

6 Fit of model and data

6.1 Protein, DNA and RNA chains

In the following table, the column labelled ‘#RSRZ > 2’ contains the number (and percentage) of RSRZ outliers, followed by percent RSRZ outliers for the chain as percentile scores relative to all X-ray entries and entries of similar resolution. The OWAB column contains the minimum, median, 95th percentile and maximum values of the occupancy-weighted average B-factor per residue. The column labelled ‘Q < 0.9’ lists the number of (and percentage) of residues with an average occupancy less than 0.9.

Mol	Chain	Analysed	<RSRZ>	#RSRZ>2	OWAB(Å ²)	Q<0.9
1	A	796/796 (100%)	0.32	31 (3%) 39 49	20, 31, 50, 67	0
1	B	796/796 (100%)	0.32	47 (5%) 22 30	20, 31, 49, 67	0
All	All	1592/1592 (100%)	0.32	78 (4%) 29 39	20, 31, 49, 67	0

All (78) RSRZ outliers are listed below:

Mol	Chain	Res	Type	RSRZ
1	B	187	LYS	8.8
1	B	57	ASN	7.6
1	B	559	PRO	6.8
1	A	51	PHE	6.7
1	B	562	ASP	5.6
1	B	560	GLN	5.2
1	B	387	PRO	4.2
1	B	189	GLY	4.2
1	A	473	GLN	4.0
1	B	689	LYS	4.0
1	B	56	ALA	4.0
1	B	186	THR	3.9
1	B	188	ASP	3.7
1	A	1	SER	3.7
1	A	688	ALA	3.6
1	B	51	PHE	3.5
1	A	391	LYS	3.5
1	B	92	LYS	3.4
1	B	695	LYS	3.3
1	A	57	ASN	3.3
1	A	390	GLU	3.3
1	B	579	TYR	3.2
1	B	151	ASP	3.2
1	A	721	HIS	3.2

Continued on next page...

Continued from previous page...

Mol	Chain	Res	Type	RSRZ
1	B	388	GLY	3.2
1	A	386	TRP	3.1
1	B	386	TRP	3.1
1	B	561	ALA	3.1
1	A	689	LYS	3.0
1	A	289	LEU	3.0
1	B	289	LEU	2.9
1	A	555	ILE	2.9
1	A	690	GLY	2.8
1	B	85	GLN	2.8
1	B	390	GLU	2.8
1	A	561	ALA	2.7
1	A	599	PRO	2.7
1	B	396	LEU	2.7
1	B	401	ASP	2.7
1	B	681	GLU	2.7
1	B	391	LYS	2.6
1	A	795	LYS	2.6
1	A	383	GLU	2.6
1	B	494	LYS	2.5
1	A	710	LEU	2.5
1	B	95	ASP	2.5
1	A	388	GLY	2.5
1	B	721	HIS	2.4
1	B	688	ALA	2.4
1	B	718	GLY	2.4
1	B	693	PRO	2.4
1	B	599	PRO	2.4
1	B	190	ARG	2.3
1	B	4	ILE	2.3
1	B	1	SER	2.3
1	A	401	ASP	2.3
1	B	699	LYS	2.3
1	B	670	GLU	2.3
1	B	491	ASP	2.3
1	A	605	LEU	2.3
1	A	707	LEU	2.3
1	A	761	GLN	2.2
1	B	720	LYS	2.2
1	A	85	GLN	2.2
1	B	717	ASP	2.2
1	B	293	LYS	2.2

Continued on next page...

Continued from previous page...

Mol	Chain	Res	Type	RSRZ
1	B	384	LYS	2.2
1	A	562	ASP	2.1
1	A	724	ASP	2.1
1	B	558	ASN	2.1
1	A	394	ALA	2.1
1	A	387	PRO	2.1
1	B	3	PRO	2.1
1	A	699	LYS	2.1
1	B	698	LYS	2.1
1	A	671	GLU	2.1
1	B	497	GLN	2.0
1	A	384	LYS	2.0

6.2 Non-standard residues in protein, DNA, RNA chains [i](#)

There are no non-standard protein/DNA/RNA residues in this entry.

6.3 Carbohydrates [i](#)

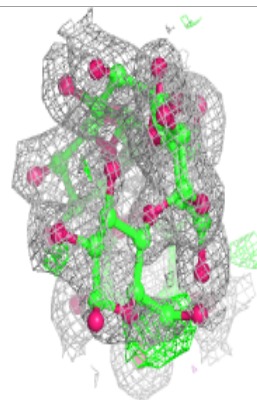
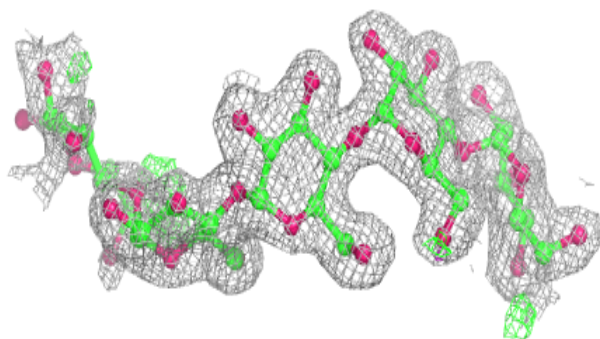
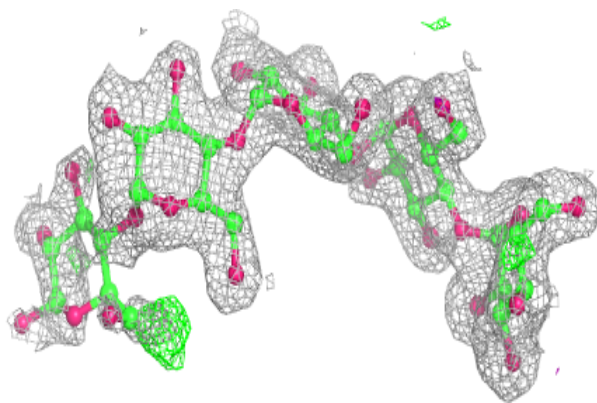
In the following table, the Atoms column lists the number of modelled atoms in the group and the number defined in the chemical component dictionary. The B-factors column lists the minimum, median, 95th percentile and maximum values of B factors of atoms in the group. The column labelled 'Q< 0.9' lists the number of atoms with occupancy less than 0.9.

Mol	Type	Chain	Res	Atoms	RSCC	RSR	B-factors(Å ²)	Q<0.9
2	BGC	D	1	12/12	0.59	0.43	49,53,54,55	10
2	BGC	C	1	12/12	0.61	0.41	49,53,54,54	10
2	GLC	C	3	11/12	0.91	0.11	30,32,34,35	0
2	GLC	D	4	11/12	0.91	0.14	31,32,36,36	0
2	GLC	D	3	11/12	0.92	0.14	30,34,37,39	0
2	GLC	C	5	11/12	0.93	0.13	27,28,31,35	0
2	GLC	D	2	11/12	0.93	0.12	38,40,43,44	0
2	GLC	D	5	11/12	0.95	0.11	26,30,31,34	0
2	GLC	C	2	11/12	0.96	0.09	34,37,41,42	0
2	GLC	C	4	11/12	0.96	0.09	28,30,32,35	0

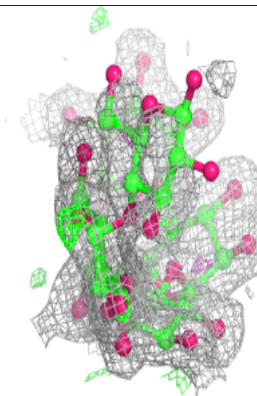
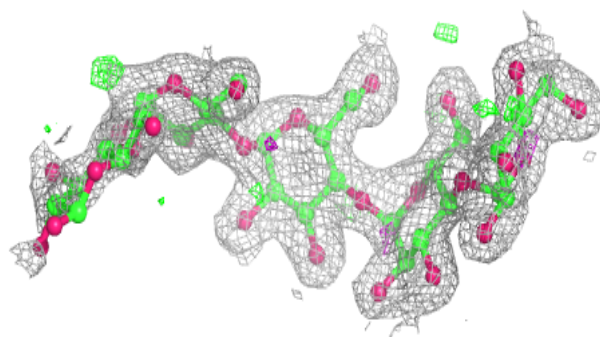
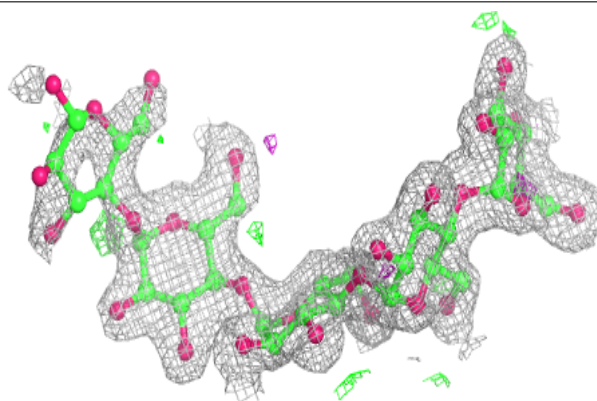
The following is a graphical depiction of the model fit to experimental electron density for oligosaccharide. Each fit is shown from different orientation to approximate a three-dimensional view.

Electron density around Chain C:

$2mF_o-DF_c$ (at 0.7 rmsd) in gray
 mF_o-DF_c (at 3 rmsd) in purple (negative)
and green (positive)

**Electron density around Chain D:**

$2mF_o-DF_c$ (at 0.7 rmsd) in gray
 mF_o-DF_c (at 3 rmsd) in purple (negative)
and green (positive)



6.4 Ligands [i](#)

In the following table, the Atoms column lists the number of modelled atoms in the group and the number defined in the chemical component dictionary. The B-factors column lists the minimum, median, 95th percentile and maximum values of B factors of atoms in the group. The column labelled 'Q<0.9' lists the number of atoms with occupancy less than 0.9.

Mol	Type	Chain	Res	Atoms	RSCC	RSR	B-factors(\AA^2)	Q<0.9
3	ASO	B	2998	11/11	0.86	0.20	34,41,45,47	0
3	ASO	A	1998	11/11	0.89	0.17	29,39,42,43	0
5	PLP	A	900	15/16	0.96	0.10	21,24,32,32	0
5	PLP	B	900	15/16	0.96	0.09	21,24,31,31	0
4	PO4	B	1999	5/5	0.97	0.08	30,33,36,38	0
4	PO4	A	999	5/5	0.98	0.07	31,33,38,38	0

6.5 Other polymers [i](#)

There are no such residues in this entry.