



Full wwPDB X-ray Structure Validation Report ⓘ

Sep 25, 2023 – 03:52 PM EDT

PDB ID : 6ATT
Title : 39S Fab bound to HER2 ecd
Authors : Oganesyanyan, V.Y.; Dall'Acqua, W.F.
Deposited on : 2017-08-29
Resolution : 3.77 Å(reported)

This is a Full wwPDB X-ray Structure Validation Report for a publicly released PDB entry.

We welcome your comments at validation@mail.wwpdb.org

A user guide is available at

<https://www.wwpdb.org/validation/2017/XrayValidationReportHelp>

with specific help available everywhere you see the ⓘ symbol.

The types of validation reports are described at

<http://www.wwpdb.org/validation/2017/FAQs#types>.

The following versions of software and data (see [references ⓘ](#)) were used in the production of this report:

MolProbity : 4.02b-467
Mogul : 1.8.5 (274361), CSD as541be (2020)
Xtrriage (Phenix) : 1.13
EDS : 2.35.1
Percentile statistics : 20191225.v01 (using entries in the PDB archive December 25th 2019)
Refmac : 5.8.0158
CCP4 : 7.0.044 (Gargrove)
Ideal geometry (proteins) : Engh & Huber (2001)
Ideal geometry (DNA, RNA) : Parkinson et al. (1996)
Validation Pipeline (wwPDB-VP) : 2.35.1

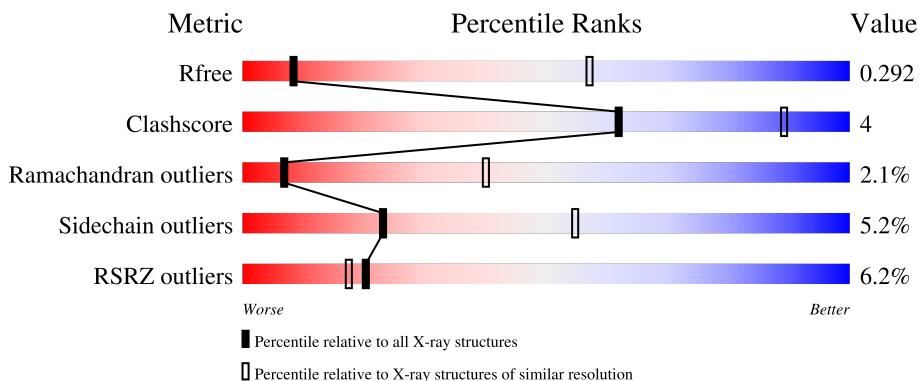
1 Overall quality at a glance

The following experimental techniques were used to determine the structure:

X-RAY DIFFRACTION

The reported resolution of this entry is 3.77 Å.

Percentile scores (ranging between 0-100) for global validation metrics of the entry are shown in the following graphic. The table shows the number of entries on which the scores are based.



Metric	Whole archive (#Entries)	Similar resolution (#Entries, resolution range(Å))
R_{free}	130704	1038 (3.96-3.60)
Clashscore	141614	1100 (3.96-3.60)
Ramachandran outliers	138981	1062 (3.96-3.60)
Sidechain outliers	138945	1058 (3.96-3.60)
RSRZ outliers	127900	1009 (3.98-3.58)

The table below summarises the geometric issues observed across the polymeric chains and their fit to the electron density. The red, orange, yellow and green segments of the lower bar indicate the fraction of residues that contain outliers for ≥ 3 , 2, 1 and 0 types of geometric quality criteria respectively. A grey segment represents the fraction of residues that are not modelled. The numeric value for each fraction is indicated below the corresponding segment, with a dot representing fractions $\leq 5\%$. The upper red bar (where present) indicates the fraction of residues that have poor fit to the electron density. The numeric value is given above the bar.

Mol	Chain	Length	Quality of chain
1	A	630	
2	H	224	
3	L	220	
4	B	2	
4	C	2	

2 Entry composition [i](#)

There are 5 unique types of molecules in this entry. The entry contains 7819 atoms, of which 0 are hydrogens and 0 are deuteriums.

In the tables below, the ZeroOcc column contains the number of atoms modelled with zero occupancy, the AltConf column contains the number of residues with at least one atom in alternate conformation and the Trace column contains the number of residues modelled with at most 2 atoms.

- Molecule 1 is a protein called Receptor tyrosine-protein kinase erbB-2.

Mol	Chain	Residues	Atoms					ZeroOcc	AltConf	Trace
			Total	C	N	O	S			
1	A	567	4370	2717	784	820	49	0	0	0

- Molecule 2 is a protein called Antibody 39S Fab heavy chain.

Mol	Chain	Residues	Atoms					ZeroOcc	AltConf	Trace
			Total	C	N	O	S			
2	H	224	1679	1060	278	334	7	0	0	0

- Molecule 3 is a protein called Antibody 39S Fab light chain.

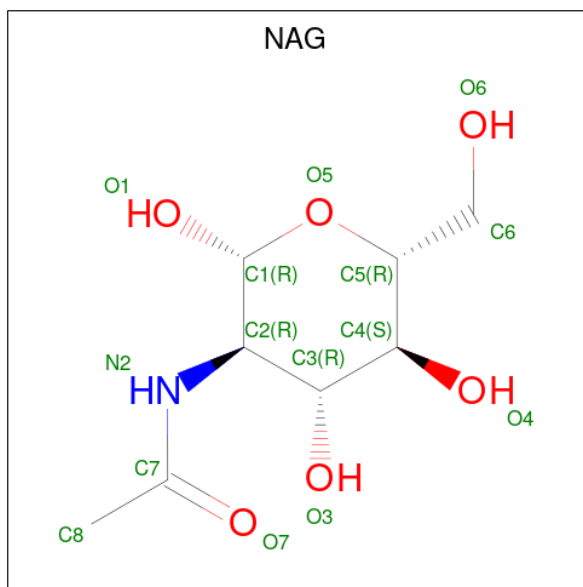
Mol	Chain	Residues	Atoms					ZeroOcc	AltConf	Trace
			Total	C	N	O	S			
3	L	220	1700	1072	284	338	6	0	0	0

- Molecule 4 is an oligosaccharide called 2-acetamido-2-deoxy-beta-D-glucopyranose-(1-4)-2-acetamido-2-deoxy-beta-D-glucopyranose.



Mol	Chain	Residues	Atoms				ZeroOcc	AltConf	Trace
			Total	C	N	O			
4	B	2	28	16	2	10	0	0	0
4	C	2	28	16	2	10	0	0	0

- Molecule 5 is 2-acetamido-2-deoxy-beta-D-glucopyranose (three-letter code: NAG) (formula: C₈H₁₅NO₆).

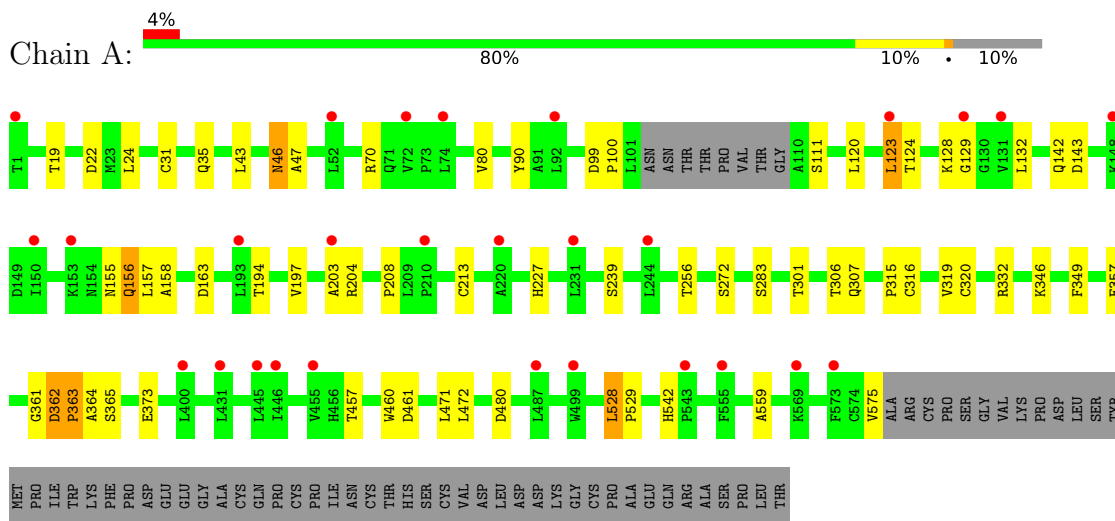


Mol	Chain	Residues	Atoms				ZeroOcc	AltConf
			Total	C	N	O		
5	A	1	14	8	1	5	0	0

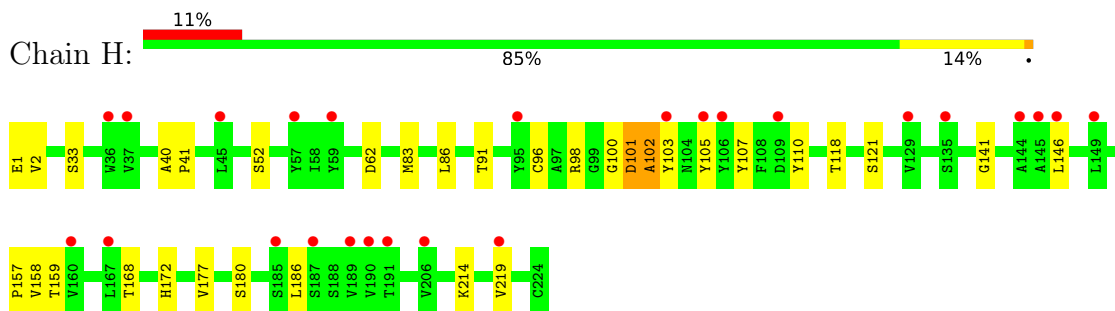
3 Residue-property plots [i](#)

These plots are drawn for all protein, RNA, DNA and oligosaccharide chains in the entry. The first graphic for a chain summarises the proportions of the various outlier classes displayed in the second graphic. The second graphic shows the sequence view annotated by issues in geometry and electron density. Residues are color-coded according to the number of geometric quality criteria for which they contain at least one outlier: green = 0, yellow = 1, orange = 2 and red = 3 or more. A red dot above a residue indicates a poor fit to the electron density ($RSRZ > 2$). Stretches of 2 or more consecutive residues without any outlier are shown as a green connector. Residues present in the sample, but not in the model, are shown in grey.

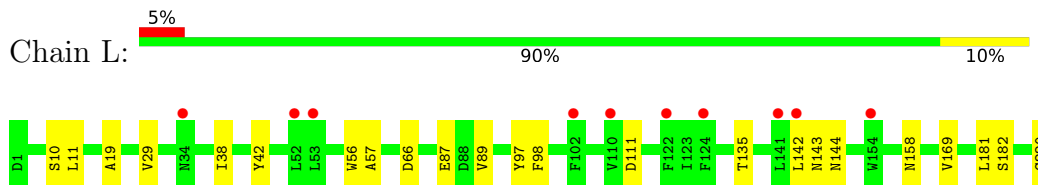
- Molecule 1: Receptor tyrosine-protein kinase erbB-2



- Molecule 2: Antibody 39S Fab heavy chain



- Molecule 3: Antibody 39S Fab light chain




- Molecule 4: 2-acetamido-2-deoxy-beta-D-glucopyranose-(1-4)-2-acetamido-2-deoxy-beta-D-glucopyranose

Chain B:  100%

MAG1
MAG2

- Molecule 4: 2-acetamido-2-deoxy-beta-D-glucopyranose-(1-4)-2-acetamido-2-deoxy-beta-D-glucopyranose

Chain C:  100%

MAG1
MAG2

4 Data and refinement statistics

Property	Value	Source
Space group	P 21 21 21	Depositor
Cell constants a, b, c, α , β , γ	67.33Å 108.17Å 348.31Å 90.00° 90.00° 90.00°	Depositor
Resolution (Å)	40.00 – 3.77 174.15 – 3.77	Depositor EDS
% Data completeness (in resolution range)	99.9 (40.00-3.77) 100.0 (174.15-3.77)	Depositor EDS
R_{merge}	(Not available)	Depositor
R_{sym}	0.13	Depositor
$\langle I/\sigma(I) \rangle$ ¹	2.54 (at 3.78Å)	Xtrriage
Refinement program	REFMAC 5.8.0158	Depositor
R, R_{free}	0.251 , 0.289 0.266 , 0.292	Depositor DCC
R_{free} test set	1313 reflections (4.94%)	wwPDB-VP
Wilson B-factor (Å ²)	132.4	Xtrriage
Anisotropy	0.090	Xtrriage
Bulk solvent k_{sol} (e/Å ³), B_{sol} (Å ²)	0.32 , 25.5	EDS
L-test for twinning ²	$\langle L \rangle = 0.42$, $\langle L^2 \rangle = 0.24$	Xtrriage
Estimated twinning fraction	No twinning to report.	Xtrriage
F_o, F_c correlation	0.83	EDS
Total number of atoms	7819	wwPDB-VP
Average B, all atoms (Å ²)	79.0	wwPDB-VP

Xtrriage's analysis on translational NCS is as follows: *The largest off-origin peak in the Patterson function is 3.43% of the height of the origin peak. No significant pseudotranslation is detected.*

¹Intensities estimated from amplitudes.

²Theoretical values of $\langle |L| \rangle$, $\langle L^2 \rangle$ for acentric reflections are 0.5, 0.333 respectively for untwinned datasets, and 0.375, 0.2 for perfectly twinned datasets.

5 Model quality

5.1 Standard geometry

Bond lengths and bond angles in the following residue types are not validated in this section: NAG

The Z score for a bond length (or angle) is the number of standard deviations the observed value is removed from the expected value. A bond length (or angle) with $|Z| > 5$ is considered an outlier worth inspection. RMSZ is the root-mean-square of all Z scores of the bond lengths (or angles).

Mol	Chain	Bond lengths		Bond angles	
		RMSZ	# Z >5	RMSZ	# Z >5
1	A	0.50	0/4472	0.73	0/6085
2	H	0.50	0/1721	0.67	0/2342
3	L	0.46	0/1741	0.66	0/2365
All	All	0.49	0/7934	0.70	0/10792

There are no bond length outliers.

There are no bond angle outliers.

There are no chirality outliers.

There are no planarity outliers.

5.2 Too-close contacts

In the following table, the Non-H and H(model) columns list the number of non-hydrogen atoms and hydrogen atoms in the chain respectively. The H(added) column lists the number of hydrogen atoms added and optimized by MolProbity. The Clashes column lists the number of clashes within the asymmetric unit, whereas Symm-Clashes lists symmetry-related clashes.

Mol	Chain	Non-H	H(model)	H(added)	Clashes	Symm-Clashes
1	A	4370	0	4186	43	0
2	H	1679	0	1626	31	0
3	L	1700	0	1652	7	0
4	B	28	0	25	3	0
4	C	28	0	25	0	0
5	A	14	0	13	0	0
All	All	7819	0	7527	68	0

The all-atom clashscore is defined as the number of clashes found per 1000 atoms (including hydrogen atoms). The all-atom clashscore for this structure is 4.

All (68) close contacts within the same asymmetric unit are listed below, sorted by their clash magnitude.

Atom-1	Atom-2	Interatomic distance (Å)	Clash overlap (Å)
1:A:129:GLY:H	1:A:155:ASN:ND2	1.54	1.03
1:A:197:VAL:HG13	2:H:103:TYR:CE1	1.97	0.99
1:A:362:ASP:H	1:A:363:PRO:CD	1.75	0.97
1:A:155:ASN:O	1:A:157:LEU:N	1.98	0.96
2:H:101:ASP:O	2:H:102:ALA:O	1.89	0.91
1:A:362:ASP:N	1:A:363:PRO:CD	2.34	0.88
2:H:33:SER:HB2	2:H:102:ALA:O	1.72	0.86
1:A:363:PRO:O	1:A:365:SER:N	2.12	0.82
4:B:1:NAG:H61	4:B:2:NAG:C7	2.09	0.82
1:A:46:ASN:OD1	4:B:1:NAG:O7	1.99	0.81
1:A:197:VAL:CG1	2:H:103:TYR:CE1	2.65	0.80
3:L:11:LEU:HD21	3:L:19:ALA:HB1	1.64	0.79
1:A:129:GLY:H	1:A:155:ASN:HD21	1.30	0.76
1:A:129:GLY:N	1:A:155:ASN:ND2	2.31	0.75
1:A:197:VAL:CG1	2:H:103:TYR:HE1	1.98	0.75
1:A:363:PRO:C	1:A:365:SER:H	1.88	0.74
1:A:362:ASP:H	1:A:363:PRO:HD3	1.50	0.71
1:A:197:VAL:HG13	2:H:103:TYR:CZ	2.26	0.71
1:A:197:VAL:HG13	2:H:103:TYR:HE1	1.54	0.69
1:A:129:GLY:H	1:A:155:ASN:HD22	1.40	0.68
1:A:542:HIS:CD2	1:A:559:ALA:HB2	2.29	0.67
1:A:362:ASP:N	1:A:363:PRO:HD2	2.10	0.64
1:A:208:PRO:CB	2:H:103:TYR:HD1	2.11	0.63
2:H:103:TYR:O	2:H:103:TYR:CD1	2.52	0.63
1:A:129:GLY:N	1:A:155:ASN:HD22	1.95	0.62
2:H:107:TYR:O	3:L:42:TYR:OH	2.10	0.62
1:A:208:PRO:HB2	2:H:103:TYR:HD1	1.66	0.60
1:A:120:LEU:HD13	1:A:123:LEU:HD22	1.85	0.59
2:H:101:ASP:O	2:H:102:ALA:C	2.37	0.58
2:H:52:SER:HB2	2:H:103:TYR:HB3	1.86	0.57
1:A:362:ASP:OD1	1:A:362:ASP:O	2.23	0.56
1:A:197:VAL:HG12	2:H:103:TYR:HE1	1.71	0.55
1:A:208:PRO:HB3	2:H:103:TYR:CD1	2.43	0.54
1:A:208:PRO:CB	2:H:103:TYR:CD1	2.91	0.54
1:A:301:THR:HB	1:A:307:GLN:HE21	1.73	0.53
2:H:83:MET:HB3	2:H:86:LEU:HD21	1.91	0.51
1:A:362:ASP:O	1:A:363:PRO:O	2.30	0.50
2:H:103:TYR:HD1	2:H:103:TYR:O	1.93	0.50
1:A:319:VAL:HG11	1:A:349:PHE:HE1	1.76	0.50
1:A:203:ALA:O	1:A:204:ARG:HG2	2.11	0.50

Continued on next page...

Continued from previous page...

Atom-1	Atom-2	Interatomic distance (Å)	Clash overlap (Å)
2:H:105:TYR:CZ	3:L:56:TRP:HH2	2.30	0.50
1:A:19:THR:HG23	1:A:472:LEU:HB3	1.95	0.48
1:A:24:LEU:CD1	1:A:43:LEU:HD21	2.43	0.48
1:A:19:THR:CG2	1:A:472:LEU:HD13	2.44	0.47
2:H:2:VAL:HG21	2:H:110:TYR:CE2	2.49	0.47
2:H:146:LEU:HD11	2:H:219:VAL:CG1	2.44	0.47
3:L:29:VAL:HG13	3:L:98:PHE:HB2	1.97	0.47
1:A:128:LYS:HA	1:A:155:ASN:HD22	1.79	0.47
1:A:197:VAL:HG13	2:H:103:TYR:OH	2.16	0.46
2:H:91:THR:HG23	2:H:118:THR:HA	1.97	0.46
1:A:361:GLY:HA2	1:A:363:PRO:HD3	1.98	0.46
1:A:208:PRO:HB2	2:H:103:TYR:O	2.15	0.46
1:A:460:TRP:CE2	1:A:471:LEU:HD22	2.50	0.46
2:H:100:GLY:O	2:H:101:ASP:O	2.35	0.45
1:A:357:GLU:O	1:A:361:GLY:N	2.49	0.45
1:A:90:TYR:CD1	1:A:132:LEU:HB2	2.54	0.43
2:H:33:SER:CB	2:H:102:ALA:O	2.56	0.43
2:H:52:SER:CB	2:H:103:TYR:HB3	2.48	0.43
2:H:40:ALA:HB1	2:H:41:PRO:HD2	2.01	0.42
1:A:362:ASP:O	1:A:365:SER:HA	2.19	0.42
2:H:100:GLY:C	2:H:101:ASP:O	2.58	0.41
2:H:172:HIS:CD2	3:L:143:ASN:HD21	2.37	0.41
3:L:169:VAL:HG22	3:L:181:LEU:HD13	2.02	0.41
1:A:319:VAL:HG11	1:A:349:PHE:CE1	2.55	0.41
1:A:528:LEU:CB	1:A:529:PRO:CD	2.99	0.41
2:H:158:VAL:CG2	2:H:186:LEU:HD22	2.51	0.41
3:L:38:ILE:HG23	3:L:97:TYR:CE2	2.55	0.41
4:B:1:NAG:H61	4:B:2:NAG:C8	2.49	0.41

There are no symmetry-related clashes.

5.3 Torsion angles [\(i\)](#)

5.3.1 Protein backbone [\(i\)](#)

In the following table, the Percentiles column shows the percent Ramachandran outliers of the chain as a percentile score with respect to all X-ray entries followed by that with respect to entries of similar resolution.

The Analysed column shows the number of residues for which the backbone conformation was analysed, and the total number of residues.

Mol	Chain	Analysed	Favoured	Allowed	Outliers	Percentiles	
1	A	563/630 (89%)	503 (89%)	47 (8%)	13 (2%)	6	38
2	H	222/224 (99%)	205 (92%)	13 (6%)	4 (2%)	8	42
3	L	218/220 (99%)	205 (94%)	9 (4%)	4 (2%)	8	42
All	All	1003/1074 (93%)	913 (91%)	69 (7%)	21 (2%)	7	40

All (21) Ramachandran outliers are listed below:

Mol	Chain	Res	Type
1	A	100	PRO
1	A	111	SER
1	A	156	GLN
1	A	362	ASP
1	A	363	PRO
1	A	364	ALA
1	A	528	LEU
2	H	102	ALA
1	A	47	ALA
1	A	123	LEU
1	A	158	ALA
1	A	320	CYS
2	H	141	GLY
2	H	101	ASP
3	L	144	ASN
3	L	57	ALA
3	L	158	ASN
1	A	315	PRO
3	L	89	VAL
1	A	99	ASP
2	H	157	PRO

5.3.2 Protein sidechains [i](#)

In the following table, the Percentiles column shows the percent sidechain outliers of the chain as a percentile score with respect to all X-ray entries followed by that with respect to entries of similar resolution.

The Analysed column shows the number of residues for which the sidechain conformation was analysed, and the total number of residues.

Mol	Chain	Analysed	Rotameric	Outliers	Percentiles	
1	A	488/543 (90%)	461 (94%)	27 (6%)	21	53

Continued on next page...

Continued from previous page...

Mol	Chain	Analysed	Rotameric	Outliers	Percentiles	
2	H	188/188 (100%)	178 (95%)	10 (5%)	22	54
3	L	195/195 (100%)	187 (96%)	8 (4%)	30	59
All	All	871/926 (94%)	826 (95%)	45 (5%)	23	55

All (45) residues with a non-rotameric sidechain are listed below:

Mol	Chain	Res	Type
1	A	22	ASP
1	A	31	CYS
1	A	35	GLN
1	A	46	ASN
1	A	70	ARG
1	A	80	VAL
1	A	124	THR
1	A	142	GLN
1	A	143	ASP
1	A	156	GLN
1	A	163	ASP
1	A	194	THR
1	A	213	CYS
1	A	227	HIS
1	A	239	SER
1	A	256	THR
1	A	272	SER
1	A	283	SER
1	A	306	THR
1	A	316	CYS
1	A	332	ARG
1	A	346	LYS
1	A	373	GLU
1	A	457	THR
1	A	461	ASP
1	A	480	ASP
1	A	575	VAL
2	H	1	GLU
2	H	62	ASP
2	H	96	CYS
2	H	98	ARG
2	H	121	SER
2	H	159	THR
2	H	168	THR

Continued on next page...

Continued from previous page...

Mol	Chain	Res	Type
2	H	177	VAL
2	H	180	SER
2	H	214	LYS
3	L	10	SER
3	L	66	ASP
3	L	87	GLU
3	L	111	ASP
3	L	135	THR
3	L	142	LEU
3	L	182	SER
3	L	220	CYS

Sometimes sidechains can be flipped to improve hydrogen bonding and reduce clashes. All (8) such sidechains are listed below:

Mol	Chain	Res	Type
1	A	152	HIS
1	A	154	ASN
1	A	155	ASN
1	A	307	GLN
1	A	415	HIS
1	A	542	HIS
1	A	561	GLN
3	L	143	ASN

5.3.3 RNA [i](#)

There are no RNA molecules in this entry.

5.4 Non-standard residues in protein, DNA, RNA chains [i](#)

There are no non-standard protein/DNA/RNA residues in this entry.

5.5 Carbohydrates [i](#)

4 monosaccharides are modelled in this entry.

In the following table, the Counts columns list the number of bonds (or angles) for which Mogul statistics could be retrieved, the number of bonds (or angles) that are observed in the model and the number of bonds (or angles) that are defined in the Chemical Component Dictionary. The Link column lists molecule types, if any, to which the group is linked. The Z score for a bond

length (or angle) is the number of standard deviations the observed value is removed from the expected value. A bond length (or angle) with $|Z| > 2$ is considered an outlier worth inspection. RMSZ is the root-mean-square of all Z scores of the bond lengths (or angles).

Mol	Type	Chain	Res	Link	Bond lengths			Bond angles		
					Counts	RMSZ	# Z > 2	Counts	RMSZ	# Z > 2
4	NAG	B	1	1,4	14,14,15	0.53	0	17,19,21	1.47	2 (11%)
4	NAG	B	2	4	14,14,15	0.92	0	17,19,21	1.31	2 (11%)
4	NAG	C	1	1,4	14,14,15	0.54	0	17,19,21	1.31	3 (17%)
4	NAG	C	2	4	14,14,15	0.61	0	17,19,21	1.13	2 (11%)

In the following table, the Chirals column lists the number of chiral outliers, the number of chiral centers analysed, the number of these observed in the model and the number defined in the Chemical Component Dictionary. Similar counts are reported in the Torsion and Rings columns. '-' means no outliers of that kind were identified.

Mol	Type	Chain	Res	Link	Chirals	Torsions	Rings
4	NAG	B	1	1,4	-	0/6/23/26	0/1/1/1
4	NAG	B	2	4	-	0/6/23/26	0/1/1/1
4	NAG	C	1	1,4	-	0/6/23/26	0/1/1/1
4	NAG	C	2	4	-	2/6/23/26	0/1/1/1

There are no bond length outliers.

All (9) bond angle outliers are listed below:

Mol	Chain	Res	Type	Atoms	Z	Observed(°)	Ideal(°)
4	B	1	NAG	C1-C2-N2	-3.91	103.81	110.49
4	B	1	NAG	C4-C3-C2	3.24	115.76	111.02
4	C	1	NAG	C4-C3-C2	2.88	115.23	111.02
4	B	2	NAG	C2-N2-C7	2.41	126.33	122.90
4	B	2	NAG	O5-C5-C6	2.39	110.95	107.20
4	C	1	NAG	C1-O5-C5	2.27	115.27	112.19
4	C	1	NAG	O5-C1-C2	-2.15	107.89	111.29
4	C	2	NAG	O5-C5-C6	2.11	110.52	107.20
4	C	2	NAG	O5-C1-C2	-2.08	108.00	111.29

There are no chirality outliers.

All (2) torsion outliers are listed below:

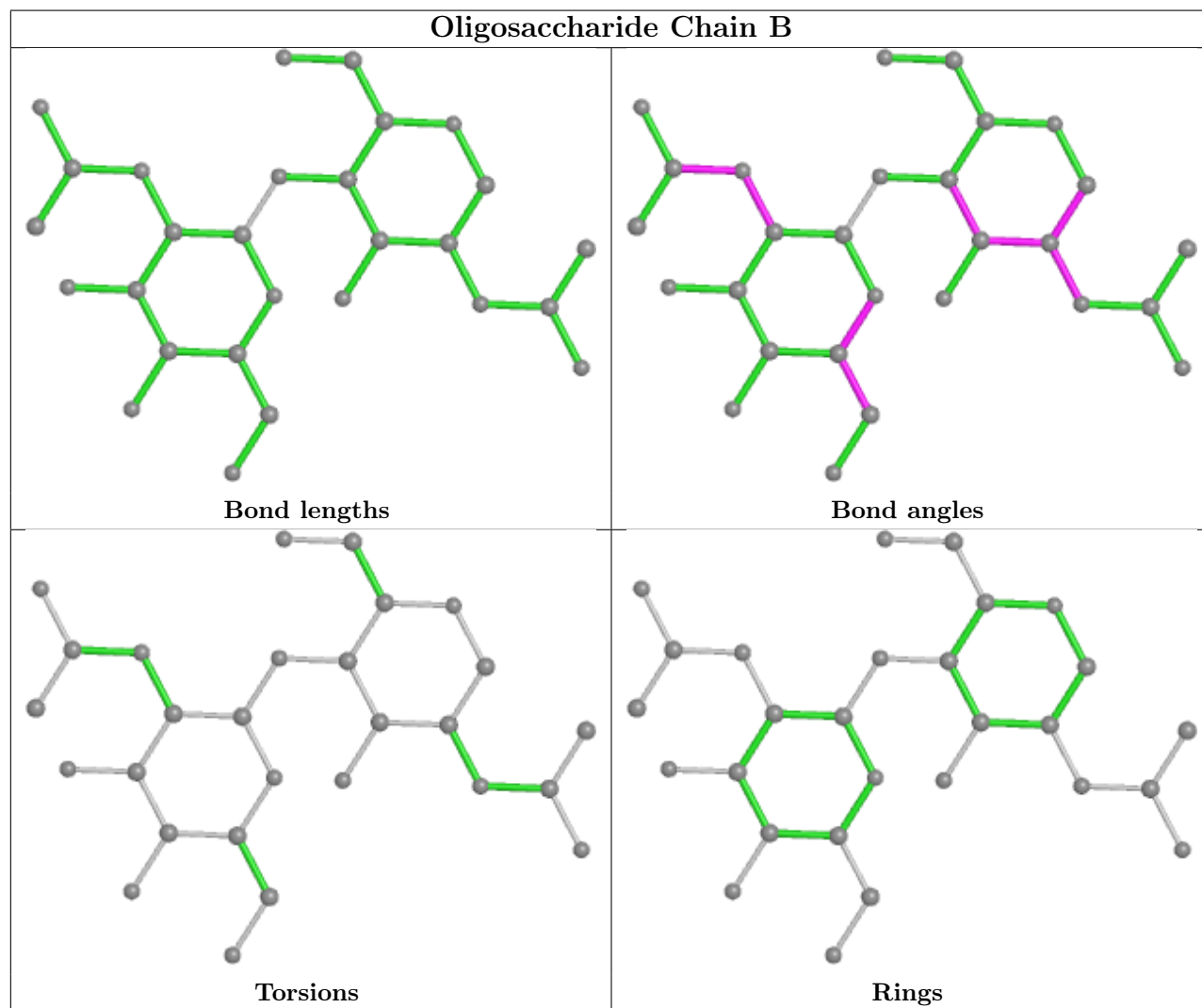
Mol	Chain	Res	Type	Atoms
4	C	2	NAG	C4-C5-C6-O6
4	C	2	NAG	O5-C5-C6-O6

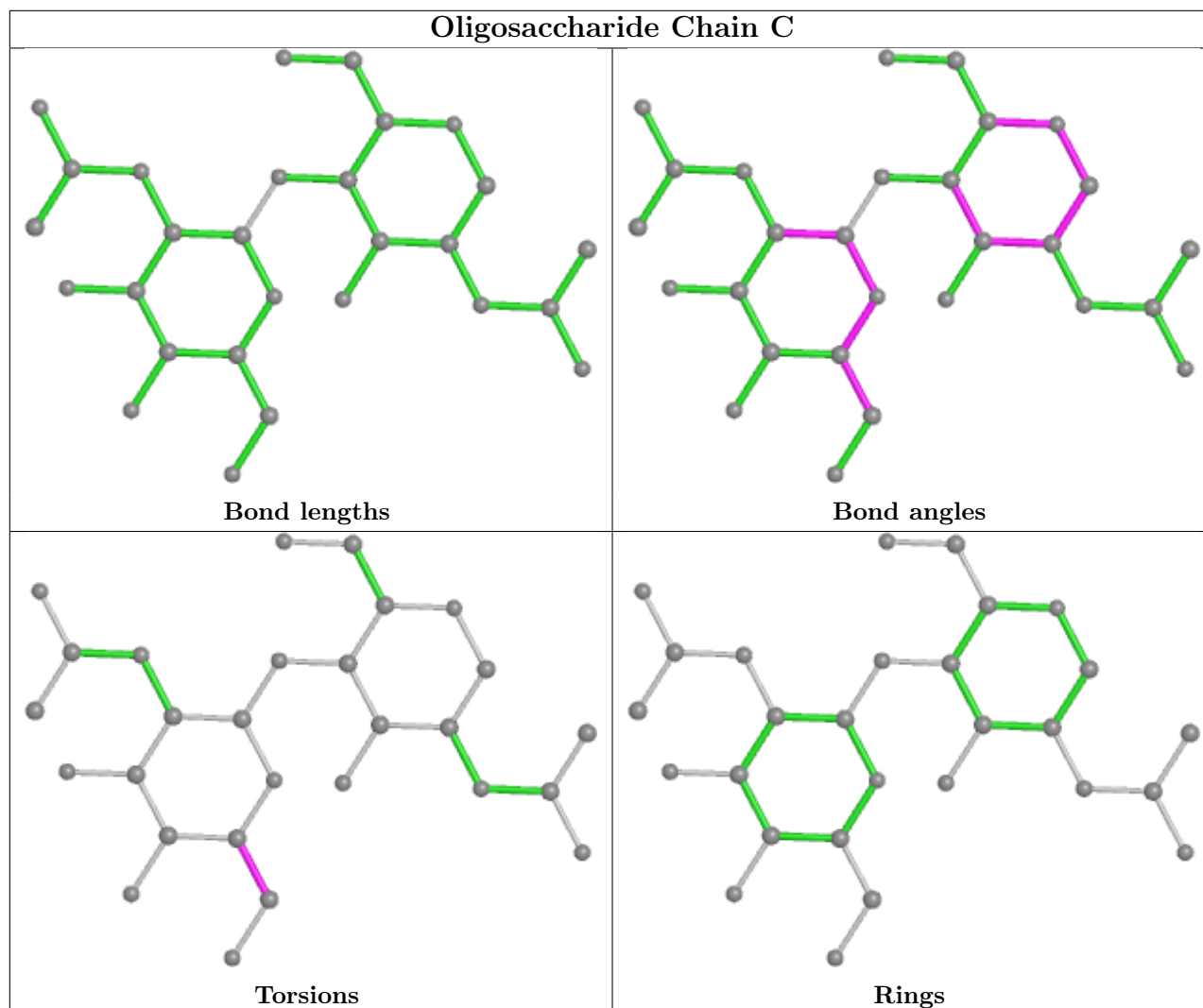
There are no ring outliers.

2 monomers are involved in 3 short contacts:

Mol	Chain	Res	Type	Clashes	Symm-Clashes
4	B	2	NAG	2	0
4	B	1	NAG	3	0

The following is a two-dimensional graphical depiction of Mogul quality analysis of bond lengths, bond angles, torsion angles, and ring geometry for oligosaccharide.





5.6 Ligand geometry [i](#)

1 ligand is modelled in this entry.

In the following table, the Counts columns list the number of bonds (or angles) for which Mogul statistics could be retrieved, the number of bonds (or angles) that are observed in the model and the number of bonds (or angles) that are defined in the Chemical Component Dictionary. The Link column lists molecule types, if any, to which the group is linked. The Z score for a bond length (or angle) is the number of standard deviations the observed value is removed from the expected value. A bond length (or angle) with $|Z| > 2$ is considered an outlier worth inspection. RMSZ is the root-mean-square of all Z scores of the bond lengths (or angles).

Mol	Type	Chain	Res	Link	Bond lengths			Bond angles		
					Counts	RMSZ	# Z > 2	Counts	RMSZ	# Z > 2
5	NAG	A	703	1	14,14,15	0.78	0	17,19,21	1.69	3 (17%)

In the following table, the Chirals column lists the number of chiral outliers, the number of chiral

centers analysed, the number of these observed in the model and the number defined in the Chemical Component Dictionary. Similar counts are reported in the Torsion and Rings columns. '-' means no outliers of that kind were identified.

Mol	Type	Chain	Res	Link	Chirals	Torsions	Rings
5	NAG	A	703	1	-	0/6/23/26	0/1/1/1

There are no bond length outliers.

All (3) bond angle outliers are listed below:

Mol	Chain	Res	Type	Atoms	Z	Observed(°)	Ideal(°)
5	A	703	NAG	C1-O5-C5	5.77	120.02	112.19
5	A	703	NAG	C2-N2-C7	2.21	126.06	122.90
5	A	703	NAG	O5-C1-C2	2.02	114.48	111.29

There are no chirality outliers.

There are no torsion outliers.

There are no ring outliers.

No monomer is involved in short contacts.

5.7 Other polymers [i](#)

There are no such residues in this entry.

5.8 Polymer linkage issues [i](#)

There are no chain breaks in this entry.

6 Fit of model and data

6.1 Protein, DNA and RNA chains

In the following table, the column labelled ‘#RSRZ > 2’ contains the number (and percentage) of RSRZ outliers, followed by percent RSRZ outliers for the chain as percentile scores relative to all X-ray entries and entries of similar resolution. The OWAB column contains the minimum, median, 95th percentile and maximum values of the occupancy-weighted average B-factor per residue. The column labelled ‘Q < 0.9’ lists the number of (and percentage) of residues with an average occupancy less than 0.9.

Mol	Chain	Analysed	<RSRZ>	#RSRZ>2	OWAB(Å ²)	Q<0.9
1	A	567/630 (90%)	0.52	28 (4%) 29 27	58, 73, 115, 148	0
2	H	224/224 (100%)	0.73	25 (11%) 5 5	60, 76, 110, 128	0
3	L	220/220 (100%)	0.40	10 (4%) 33 30	64, 86, 105, 114	0
All	All	1011/1074 (94%)	0.54	63 (6%) 20 17	58, 76, 111, 148	0

All (63) RSRZ outliers are listed below:

Mol	Chain	Res	Type	RSRZ
1	A	1	THR	5.3
2	H	103	TYR	4.7
2	H	146	LEU	3.8
2	H	145	ALA	3.7
2	H	144	ALA	3.6
3	L	102	PHE	3.4
2	H	135	SER	3.2
3	L	141	LEU	3.2
2	H	106	TYR	3.0
1	A	487	LEU	3.0
3	L	52	LEU	2.9
2	H	187	SER	2.9
2	H	37	VAL	2.8
2	H	219	VAL	2.8
1	A	123	LEU	2.8
1	A	445	LEU	2.8
2	H	59	TYR	2.8
2	H	206	VAL	2.7
2	H	190	VAL	2.7
2	H	36	TRP	2.6
1	A	573	PHE	2.5
2	H	105	TYR	2.5
3	L	122	PHE	2.5

Continued on next page...

Continued from previous page...

Mol	Chain	Res	Type	RSRZ
2	H	45	LEU	2.5
2	H	129	VAL	2.5
1	A	431	LEU	2.5
3	L	154	TRP	2.4
1	A	455	VAL	2.4
1	A	148	LYS	2.4
1	A	220	ALA	2.4
1	A	131	VAL	2.4
2	H	191	THR	2.4
2	H	160	VAL	2.3
1	A	244	LEU	2.3
1	A	74	LEU	2.3
3	L	142	LEU	2.3
2	H	109	ASP	2.3
1	A	153	LYS	2.2
1	A	231	LEU	2.2
1	A	129	GLY	2.2
1	A	569	LYS	2.2
1	A	400	LEU	2.2
3	L	34	ASN	2.2
3	L	124	PHE	2.2
2	H	95	TYR	2.2
3	L	110	VAL	2.2
1	A	52	LEU	2.2
1	A	210	PRO	2.1
2	H	185	SER	2.1
1	A	150	ILE	2.1
1	A	446	ILE	2.1
1	A	555	PHE	2.1
1	A	193	LEU	2.1
2	H	167	LEU	2.1
1	A	543	PRO	2.1
1	A	203	ALA	2.1
2	H	189	VAL	2.1
1	A	72	VAL	2.1
3	L	53	LEU	2.1
2	H	57	TYR	2.0
1	A	92	LEU	2.0
2	H	149	LEU	2.0
1	A	499	TRP	2.0

6.2 Non-standard residues in protein, DNA, RNA chains [i](#)

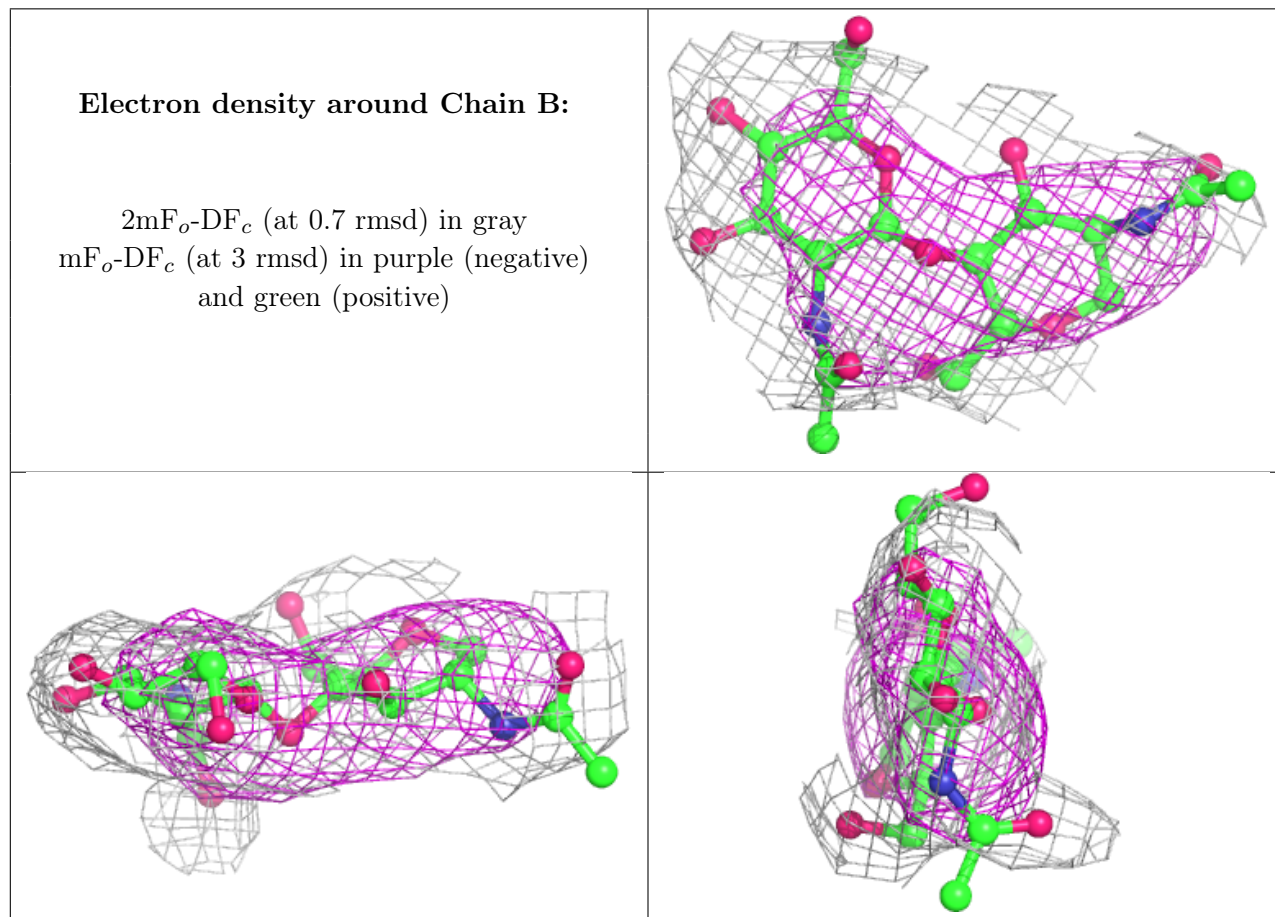
There are no non-standard protein/DNA/RNA residues in this entry.

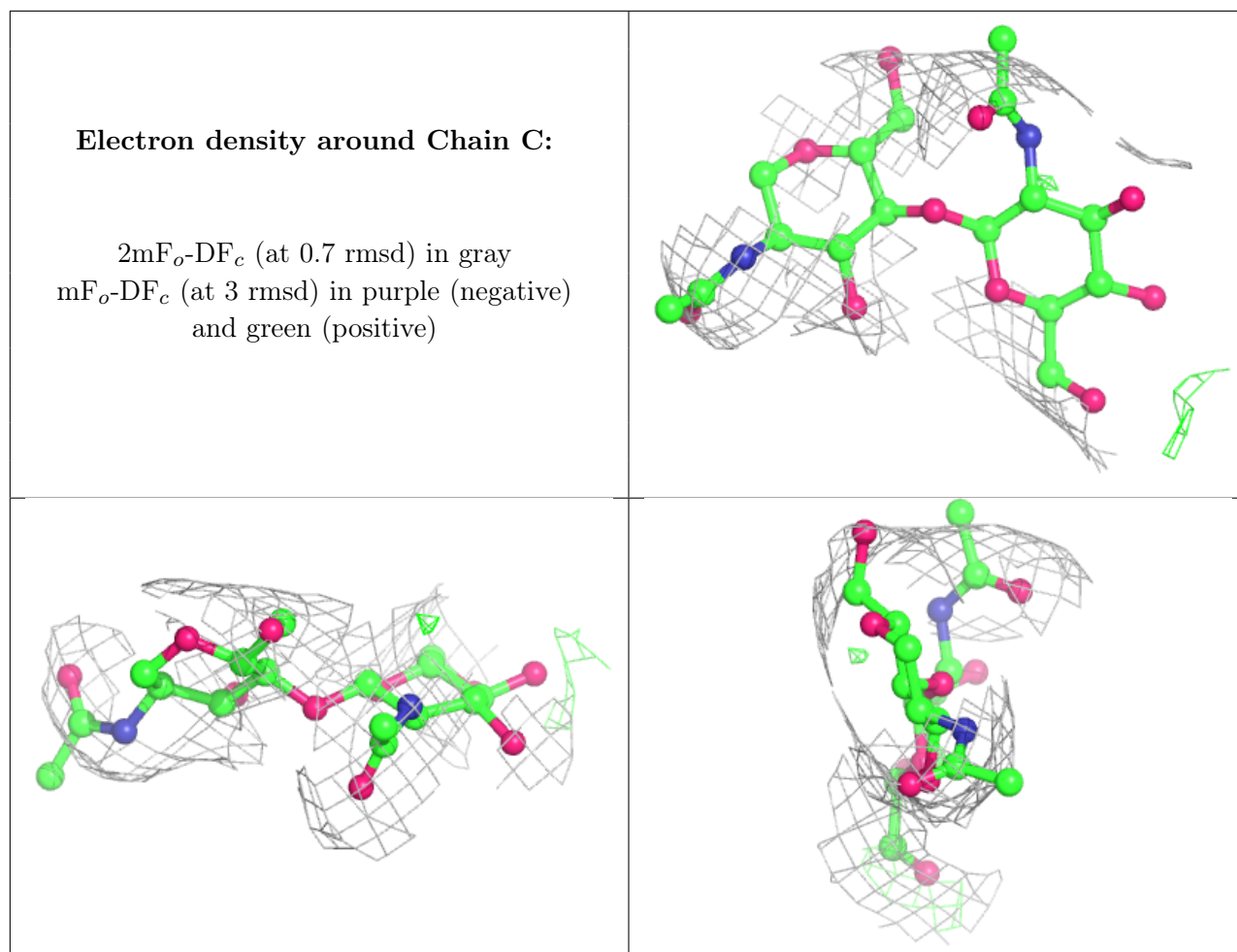
6.3 Carbohydrates [i](#)

In the following table, the Atoms column lists the number of modelled atoms in the group and the number defined in the chemical component dictionary. The B-factors column lists the minimum, median, 95th percentile and maximum values of B factors of atoms in the group. The column labelled 'Q<0.9' lists the number of atoms with occupancy less than 0.9.

Mol	Type	Chain	Res	Atoms	RSCC	RSR	B-factors(Å ²)	Q<0.9
4	NAG	C	2	14/15	0.78	0.24	76,76,76,76	0
4	NAG	B	2	14/15	0.84	0.31	76,76,76,76	0
4	NAG	C	1	14/15	0.85	0.31	76,76,76,76	0
4	NAG	B	1	14/15	0.91	0.23	61,66,78,98	0

The following is a graphical depiction of the model fit to experimental electron density for oligosaccharide. Each fit is shown from different orientation to approximate a three-dimensional view.





6.4 Ligands [i](#)

In the following table, the Atoms column lists the number of modelled atoms in the group and the number defined in the chemical component dictionary. The B-factors column lists the minimum, median, 95th percentile and maximum values of B factors of atoms in the group. The column labelled 'Q<0.9' lists the number of atoms with occupancy less than 0.9.

Mol	Type	Chain	Res	Atoms	RSCC	RSR	B-factors(Å ²)	Q<0.9
5	NAG	A	703	14/15	0.87	0.15	76,76,76,76	0

6.5 Other polymers [i](#)

There are no such residues in this entry.