



Full wwPDB X-ray Structure Validation Report ⓘ

Dec 17, 2023 – 07:30 pm GMT

PDB ID : 4AU9
Title : Crystal Structure of a Fungal DyP-Type Peroxidase from *Auricularia auricula-judae*
Authors : Strittmatter, E.; Pecyna, M.; Ullrich, R.; Hofrichter, M.; Plattner, D.A.; Liers, C.; Piontek, K.
Deposited on : 2012-05-14
Resolution : 2.10 Å(reported)

This is a Full wwPDB X-ray Structure Validation Report for a publicly released PDB entry.

We welcome your comments at validation@mail.wwpdb.org

A user guide is available at

<https://www.wwpdb.org/validation/2017/XrayValidationReportHelp>

with specific help available everywhere you see the ⓘ symbol.

The types of validation reports are described at

<http://www.wwpdb.org/validation/2017/FAQs#types>.

The following versions of software and data (see [references ⓘ](#)) were used in the production of this report:

MolProbity : 4.02b-467
Mogul : 1.8.4, CSD as541be (2020)
Xtriage (Phenix) : 1.13
EDS : 2.36
buster-report : 1.1.7 (2018)
Percentile statistics : 20191225.v01 (using entries in the PDB archive December 25th 2019)
Refmac : 5.8.0158
CCP4 : 7.0.044 (Gargrove)
Ideal geometry (proteins) : Engh & Huber (2001)
Ideal geometry (DNA, RNA) : Parkinson et al. (1996)
Validation Pipeline (wwPDB-VP) : 2.36

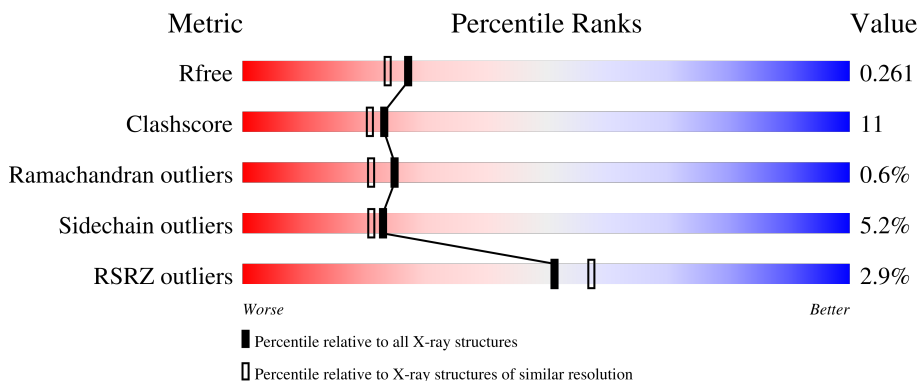
1 Overall quality at a glance

The following experimental techniques were used to determine the structure:

X-RAY DIFFRACTION


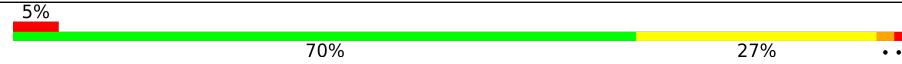
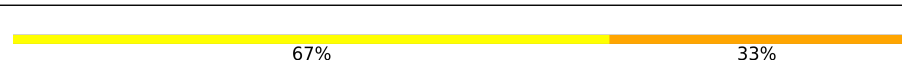

The reported resolution of this entry is 2.10 Å.

Percentile scores (ranging between 0-100) for global validation metrics of the entry are shown in the following graphic. The table shows the number of entries on which the scores are based.



Metric	Whole archive (#Entries)	Similar resolution (#Entries, resolution range(Å))
R_{free}	130704	5197 (2.10-2.10)
Clashscore	141614	5710 (2.10-2.10)
Ramachandran outliers	138981	5647 (2.10-2.10)
Sidechain outliers	138945	5648 (2.10-2.10)
RSRZ outliers	127900	5083 (2.10-2.10)

The table below summarises the geometric issues observed across the polymeric chains and their fit to the electron density. The red, orange, yellow and green segments of the lower bar indicate the fraction of residues that contain outliers for ≥ 3 , 2, 1 and 0 types of geometric quality criteria respectively. A grey segment represents the fraction of residues that are not modelled. The numeric value for each fraction is indicated below the corresponding segment, with a dot representing fractions $\leq 5\%$. The upper red bar (where present) indicates the fraction of residues that have poor fit to the electron density. The numeric value is given above the bar.

Mol	Chain	Length	Quality of chain
1	A	448	
1	B	448	
2	C	3	
3	D	2	

The following table lists non-polymeric compounds, carbohydrate monomers and non-standard residues in protein, DNA, RNA chains that are outliers for geometric or electron-density-fit criteria:

Mol	Type	Chain	Res	Chirality	Geometry	Clashes	Electron density
5	NAG	B	711	X	-	-	-

2 Entry composition [i](#)

There are 9 unique types of molecules in this entry. The entry contains 7571 atoms, of which 0 are hydrogens and 0 are deuteriums.

In the tables below, the ZeroOcc column contains the number of atoms modelled with zero occupancy, the AltConf column contains the number of residues with at least one atom in alternate conformation and the Trace column contains the number of residues modelled with at most 2 atoms.

- Molecule 1 is a protein called DYP-TYPE PEROXIDASE I.

Mol	Chain	Residues	Atoms					ZeroOcc	AltConf	Trace
			Total	C	N	O	S			
1	A	448	3323	2093	571	654	5	0	1	0
1	B	448	3323	2093	571	654	5	0	1	0

- Molecule 2 is an oligosaccharide called beta-D-mannopyranose-(1-4)-2-acetamido-2-deoxy-beta-D-glucopyranose-(1-4)-2-acetamido-2-deoxy-beta-D-glucopyranose.



Mol	Chain	Residues	Atoms				ZeroOcc	AltConf	Trace
			Total	C	N	O			
2	C	3	39	22	2	15	0	0	0

- Molecule 3 is an oligosaccharide called 2-acetamido-2-deoxy-beta-D-glucopyranose-(1-4)-2-acetamido-2-deoxy-beta-D-glucopyranose.



Mol	Chain	Residues	Atoms				ZeroOcc	AltConf	Trace
			Total	C	N	O			
3	D	2	28	16	2	10	0	0	0

- Molecule 4 is PROTOPORPHYRIN IX CONTAINING FE (three-letter code: HEM) (formula: C₃₄H₃₂FeN₄O₄).



Mol	Chain	Residues	Atoms				ZeroOcc	AltConf	
4	A	1	Total	C	Fe	N	O	0	0
			43	34	1	4	4		
4	B	1	Total	C	Fe	N	O	0	0
			43	34	1	4	4		

- Molecule 5 is 2-acetamido-2-deoxy-beta-D-glucopyranose (three-letter code: NAG) (formula: $C_8H_{15}NO_6$).



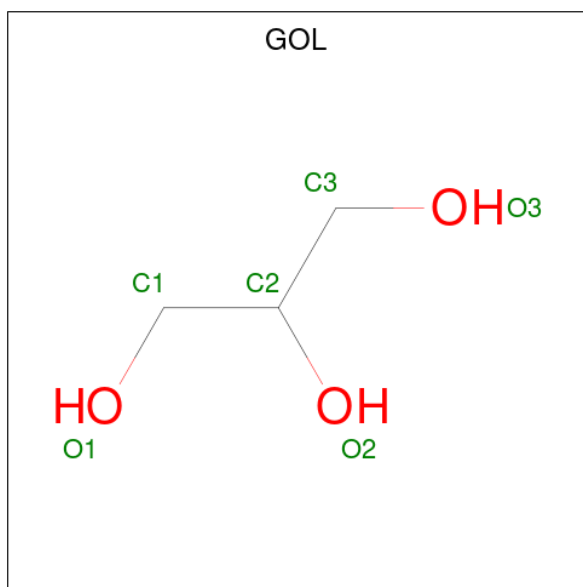
Mol	Chain	Residues	Atoms			ZeroOcc	AltConf	
5	A	1	Total	C	N	O	0	0
			14	8	1	5		

Continued on next page...

Continued from previous page...

Mol	Chain	Residues	Atoms				ZeroOcc	AltConf
5	A	1	Total	C	N	O	0	0
			14	8	1	5		
5	B	1	Total	C	N	O	0	0
			14	8	1	5		

- Molecule 6 is GLYCEROL (three-letter code: GOL) (formula: $C_3H_8O_3$).



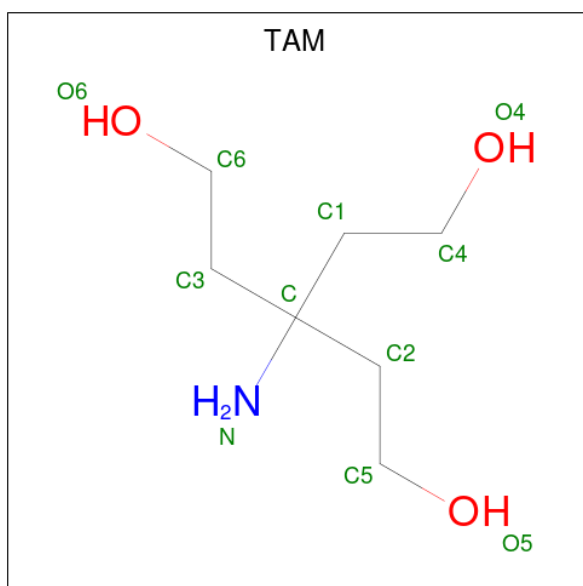
Mol	Chain	Residues	Atoms			ZeroOcc	AltConf
6	A	1	Total	C	O	0	0
			6	3	3		
6	A	1	Total	C	O	0	0
			6	3	3		
6	A	1	Total	C	O	0	0
			6	3	3		
6	B	1	Total	C	O	0	0
			6	3	3		
6	B	1	Total	C	O	0	0
			6	3	3		
6	B	1	Total	C	O	0	0
			6	3	3		

- Molecule 7 is ACETATE ION (three-letter code: ACT) (formula: $C_2H_3O_2$).



Mol	Chain	Residues	Atoms			ZeroOcc	AltConf
7	A	1	Total	C	O	0	0
			4	2	2		

- Molecule 8 is TRIS(HYDROXYETHYL)AMINOMETHANE (three-letter code: TAM) (formula: $C_7H_{17}NO_3$).



Mol	Chain	Residues	Atoms				ZeroOcc	AltConf
8	B	1	Total	C	N	O	0	0
			11	7	1	3		

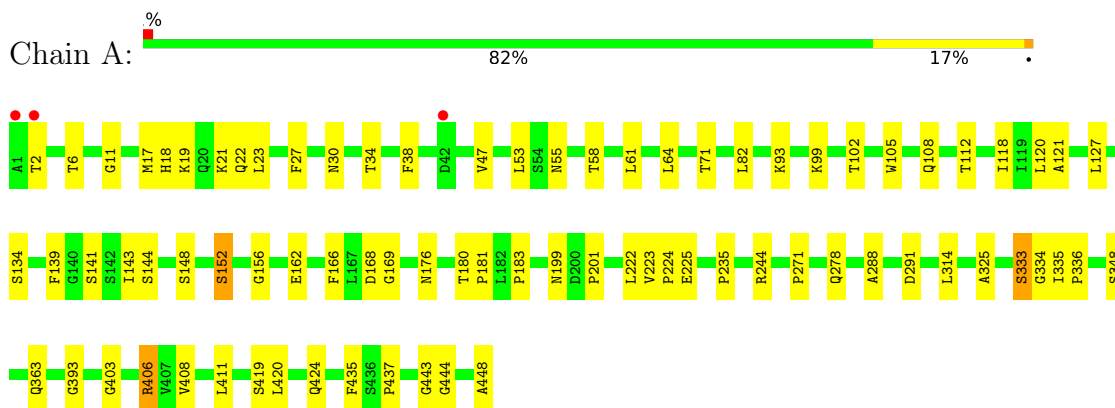
- Molecule 9 is water.

Mol	Chain	Residues	Atoms		ZeroOcc	AltConf
9	A	393	Total 393	O 393	0	0
9	B	286	Total 286	O 286	0	0

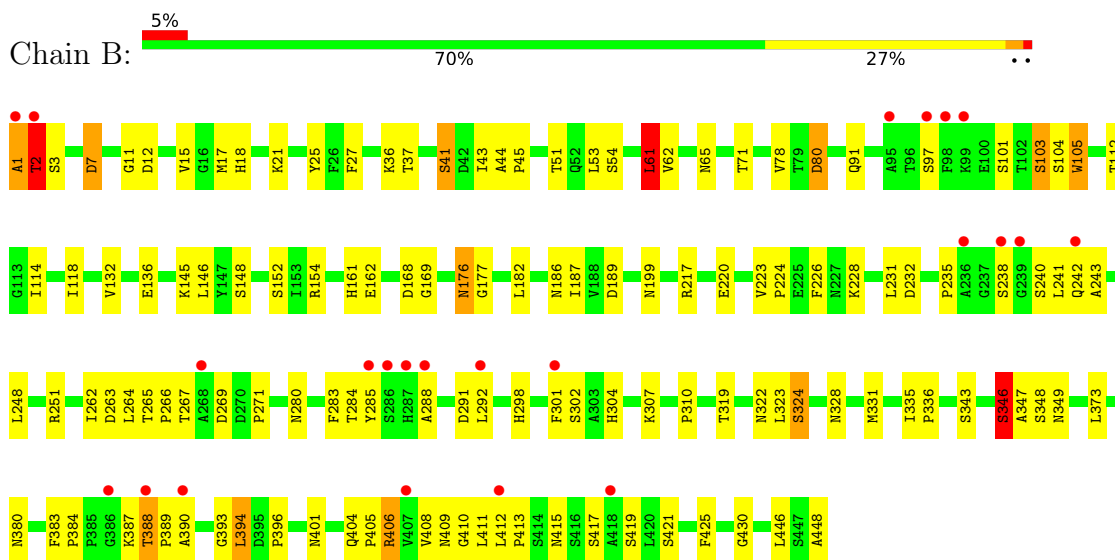
3 Residue-property plots [i](#)

These plots are drawn for all protein, RNA, DNA and oligosaccharide chains in the entry. The first graphic for a chain summarises the proportions of the various outlier classes displayed in the second graphic. The second graphic shows the sequence view annotated by issues in geometry and electron density. Residues are color-coded according to the number of geometric quality criteria for which they contain at least one outlier: green = 0, yellow = 1, orange = 2 and red = 3 or more. A red dot above a residue indicates a poor fit to the electron density ($RSRZ > 2$). Stretches of 2 or more consecutive residues without any outlier are shown as a green connector. Residues present in the sample, but not in the model, are shown in grey.

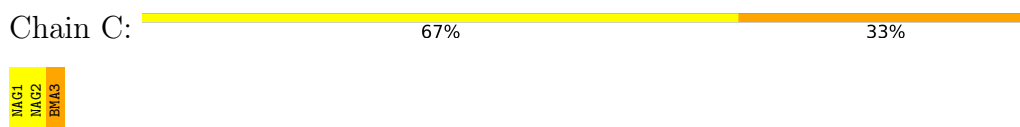
- Molecule 1: DYP-TYPE PEROXIDASE I



- Molecule 1: DYP-TYPE PEROXIDASE I



- Molecule 2: beta-D-mannopyranose-(1-4)-2-acetamido-2-deoxy-beta-D-glucopyranose-(1-4)-2-acetamido-2-deoxy-beta-D-glucopyranose



- Molecule 3: 2-acetamido-2-deoxy-beta-D-glucopyranose-(1-4)-2-acetamido-2-deoxy-beta-D-glucopyranose

Chain D: 

MAG1
MAG2

4 Data and refinement statistics

Property	Value	Source
Space group	P 1 21 1	Depositor
Cell constants a, b, c, α , β , γ	66.60Å 46.69Å 141.20Å 90.00° 91.35° 90.00°	Depositor
Resolution (Å)	49.03 – 2.10 49.01 – 2.10	Depositor EDS
% Data completeness (in resolution range)	100.0 (49.03-2.10) 96.9 (49.01-2.10)	Depositor EDS
R_{merge}	0.09	Depositor
R_{sym}	(Not available)	Depositor
$\langle I/\sigma(I) \rangle$ ¹	1.74 (at 2.10Å)	Xtrriage
Refinement program	REFMAC 5.5.0109	Depositor
R, R_{free}	0.180 , 0.261 0.181 , 0.261	Depositor DCC
R_{free} test set	2483 reflections (5.00%)	wwPDB-VP
Wilson B-factor (Å ²)	21.3	Xtrriage
Anisotropy	0.206	Xtrriage
Bulk solvent k_{sol} (e/Å ³), B_{sol} (Å ²)	0.37 , 64.6	EDS
L-test for twinning ²	$\langle L \rangle = 0.47$, $\langle L^2 \rangle = 0.30$	Xtrriage
Estimated twinning fraction	0.028 for h,-k,-l	Xtrriage
F_o, F_c correlation	0.94	EDS
Total number of atoms	7571	wwPDB-VP
Average B, all atoms (Å ²)	26.0	wwPDB-VP

Xtrriage's analysis on translational NCS is as follows: *The largest off-origin peak in the Patterson function is 4.56% of the height of the origin peak. No significant pseudotranslation is detected.*

¹Intensities estimated from amplitudes.

²Theoretical values of $\langle |L| \rangle$, $\langle L^2 \rangle$ for acentric reflections are 0.5, 0.333 respectively for untwinned datasets, and 0.375, 0.2 for perfectly twinned datasets.

5 Model quality

5.1 Standard geometry

Bond lengths and bond angles in the following residue types are not validated in this section: ACT, GOL, NAG, BMA, TAM, HEM

The Z score for a bond length (or angle) is the number of standard deviations the observed value is removed from the expected value. A bond length (or angle) with $|Z| > 5$ is considered an outlier worth inspection. RMSZ is the root-mean-square of all Z scores of the bond lengths (or angles).

Mol	Chain	Bond lengths		Bond angles	
		RMSZ	# Z >5	RMSZ	# Z >5
1	A	0.57	0/3404	0.63	0/4644
1	B	0.48	0/3404	0.57	0/4644
All	All	0.53	0/6808	0.61	0/9288

Chiral center outliers are detected by calculating the chiral volume of a chiral center and verifying if the center is modelled as a planar moiety or with the opposite hand. A planarity outlier is detected by checking planarity of atoms in a peptide group, atoms in a mainchain group or atoms of a sidechain that are expected to be planar.

Mol	Chain	#Chirality outliers	#Planarity outliers
1	A	0	2
1	B	0	4
All	All	0	6

There are no bond length outliers.

There are no bond angle outliers.

There are no chirality outliers.

All (6) planarity outliers are listed below:

Mol	Chain	Res	Type	Group
1	A	176	ASN	Peptide
1	A	288	ALA	Peptide
1	B	1	ALA	Peptide
1	B	105	TRP	Peptide
1	B	176	ASN	Peptide
1	B	238	SER	Peptide

5.2 Too-close contacts

In the following table, the Non-H and H(model) columns list the number of non-hydrogen atoms and hydrogen atoms in the chain respectively. The H(added) column lists the number of hydrogen atoms added and optimized by MolProbity. The Clashes column lists the number of clashes within the asymmetric unit, whereas Symm-Clashes lists symmetry-related clashes.

Mol	Chain	Non-H	H(model)	H(added)	Clashes	Symm-Clashes
1	A	3323	0	3227	51	0
1	B	3323	0	3228	96	0
2	C	39	0	34	2	0
3	D	28	0	25	1	0
4	A	43	0	30	0	0
4	B	43	0	30	3	0
5	A	28	0	26	1	0
5	B	14	0	13	1	0
6	A	18	0	24	3	0
6	B	18	0	24	1	0
7	A	4	0	3	0	0
8	B	11	0	17	3	0
9	A	393	0	0	7	0
9	B	286	0	0	18	0
All	All	7571	0	6681	153	0

The all-atom clashscore is defined as the number of clashes found per 1000 atoms (including hydrogen atoms). The all-atom clashscore for this structure is 11.

All (153) close contacts within the same asymmetric unit are listed below, sorted by their clash magnitude.

Atom-1	Atom-2	Interatomic distance (Å)	Clash overlap (Å)
1:A:168[A]:ASP:OD1	1:A:169:GLY:N	1.72	1.21
9:B:2284:HOH:O	3:D:2:NAG:H2	1.46	1.16
2:C:2:NAG:H62	2:C:3:BMA:C1	1.76	1.15
1:B:61:LEU:HD12	1:B:62:VAL:H	1.05	1.14
1:A:21:LYS:HD3	1:A:152:SER:HB3	1.36	1.03
1:B:240:SER:HB2	9:B:2195:HOH:O	1.57	1.02
1:B:168[A]:ASP:OD1	1:B:169:GLY:N	1.93	1.01
1:B:61:LEU:CD1	1:B:62:VAL:H	1.77	0.95
1:A:334:GLY:O	6:A:801:GOL:H31	1.67	0.94
1:B:61:LEU:HD12	1:B:62:VAL:N	1.83	0.91
1:B:240:SER:HB3	1:B:243:ALA:H	1.38	0.87
1:B:291:ASP:OD2	9:B:2224:HOH:O	1.95	0.82
1:B:1:ALA:HA	9:B:2001:HOH:O	1.82	0.80

Continued on next page...

Continued from previous page...

Atom-1	Atom-2	Interatomic distance (Å)	Clash overlap (Å)
1:B:409:ASN:OD1	1:B:419:SER:OG	2.00	0.79
1:B:2:THR:HG22	1:B:3:SER:H	1.51	0.76
1:A:6:THR:H	6:A:800:GOL:H12	1.52	0.73
1:A:58:THR:HG22	1:A:58:THR:O	1.88	0.72
2:C:2:NAG:C6	2:C:3:BMA:C1	2.59	0.70
1:B:298:HIS:HB2	9:B:2228:HOH:O	1.92	0.70
1:B:189:ASP:OD2	1:B:199:ASN:ND2	2.25	0.70
1:B:25:TYR:CE2	1:B:145:LYS:HD2	2.26	0.69
1:B:408:VAL:CG2	1:B:411:LEU:HD11	2.22	0.69
1:B:322:ASN:OD1	1:B:324:SER:HB3	1.93	0.69
1:B:413:PRO:HD2	9:B:2276:HOH:O	1.93	0.69
1:B:251:ARG:NH2	1:B:410:GLY:O	2.26	0.68
1:B:408:VAL:HG22	1:B:411:LEU:HD11	1.73	0.68
1:A:271:PRO:HD2	9:A:2268:HOH:O	1.96	0.65
1:B:44:ALA:HB3	1:B:45:PRO:HD3	1.78	0.65
1:A:55:ASN:HB3	1:A:58:THR:HB	1.79	0.65
1:A:17:MET:O	1:A:18:HIS:HB2	1.97	0.65
1:A:223:VAL:HB	1:A:224:PRO:HD3	1.79	0.64
1:B:21:LYS:HD3	1:B:152:SER:HB3	1.79	0.63
1:A:58:THR:O	1:A:58:THR:CG2	2.45	0.63
1:A:444:GLY:O	1:A:448:ALA:HB3	1.98	0.63
1:B:401:ASN:HD22	1:B:404:GLN:HB2	1.64	0.61
1:B:264:LEU:HD21	1:B:283:PHE:HB3	1.83	0.60
1:B:15:VAL:O	1:B:15:VAL:HG22	2.01	0.59
1:A:19:LYS:HB2	1:A:121:ALA:HB1	1.84	0.59
1:B:61:LEU:CG	1:B:62:VAL:H	2.14	0.59
1:B:251:ARG:NE	1:B:411:LEU:O	2.35	0.59
1:B:132:VAL:O	1:B:136:GLU:HG3	2.02	0.58
1:A:333:SER:OG	6:A:802:GOL:O1	2.21	0.58
1:A:34:THR:HG22	1:A:38:PHE:HE2	1.68	0.58
1:B:12:ASP:HB2	1:B:17:MET:HE2	1.84	0.57
1:B:11:GLY:HA3	1:B:53:LEU:HD12	1.87	0.57
1:B:101:SER:OG	9:B:2088:HOH:O	2.18	0.57
1:A:102:THR:HA	1:A:105:TRP:CD1	2.40	0.57
1:B:105:TRP:CD2	1:B:430:GLY:HA3	2.39	0.57
1:A:444:GLY:O	1:A:448:ALA:CB	2.53	0.56
1:B:396:PRO:O	1:B:406:ARG:NH2	2.37	0.55
1:A:23:LEU:HD11	1:A:148:SER:OG	2.07	0.55
1:A:435:PHE:O	1:A:437:PRO:HD3	2.08	0.54
1:A:403:GLY:HA2	1:A:424:GLN:OE1	2.09	0.53
1:B:302:SER:O	1:B:396:PRO:HD3	2.08	0.53

Continued on next page...

Continued from previous page...

Atom-1	Atom-2	Interatomic distance (Å)	Clash overlap (Å)
1:B:71:THR:HG21	1:B:112:THR:HB	1.91	0.53
1:A:393:GLY:HA2	9:A:2366:HOH:O	2.08	0.52
1:B:335:ILE:HG13	1:B:336:PRO:HD2	1.91	0.52
1:B:387:LYS:O	1:B:390:ALA:HA	2.09	0.51
1:B:145:LYS:CE	1:B:148:SER:HB2	2.40	0.51
1:B:262:ILE:O	1:B:266:PRO:HB3	2.10	0.51
1:A:34:THR:HG22	1:A:38:PHE:CE2	2.45	0.51
1:B:21:LYS:HD3	1:B:152:SER:CB	2.41	0.50
1:B:388:THR:HA	1:B:389:PRO:C	2.30	0.50
1:A:143:ILE:O	1:A:143:ILE:HG13	2.12	0.50
1:A:108:GLN:OE1	1:A:108:GLN:N	2.44	0.50
1:A:348:SER:HA	5:A:711:NAG:H82	1.92	0.50
1:B:310:PRO:HD2	9:B:2232:HOH:O	2.11	0.50
1:B:176:ASN:OD1	1:B:177:GLY:N	2.45	0.49
1:B:240:SER:OG	1:B:242:GLN:HB3	2.13	0.49
1:B:145:LYS:HE3	1:B:148:SER:HB2	1.93	0.49
1:B:105:TRP:CE2	1:B:430:GLY:HA2	2.47	0.49
8:B:801:TAM:H32	8:B:801:TAM:H52	1.52	0.48
1:A:99:LYS:NZ	9:A:2101:HOH:O	2.47	0.48
1:A:30:ASN:HB2	1:A:141:SER:O	2.14	0.47
1:A:199:ASN:O	1:A:201:PRO:HD3	2.14	0.47
6:B:803:GOL:H31	9:B:2133:HOH:O	2.13	0.47
1:B:393:GLY:HA3	1:B:408:VAL:HA	1.95	0.47
1:B:269:ASP:CG	1:B:271:PRO:HD3	2.34	0.47
1:B:226:PHE:HD1	1:B:425:PHE:CD2	2.32	0.47
1:B:401:ASN:ND2	1:B:404:GLN:HB2	2.29	0.47
1:B:307:LYS:NZ	1:B:380:ASN:O	2.48	0.47
1:B:349:ASN:ND2	9:B:2250:HOH:O	2.22	0.47
1:A:64:LEU:HD12	1:A:120:LEU:HD21	1.97	0.46
1:A:61:LEU:HD21	1:A:127:LEU:HD22	1.98	0.46
1:B:15:VAL:HG22	1:B:18:HIS:NE2	2.30	0.46
1:A:93:LYS:HD2	9:A:2090:HOH:O	2.14	0.46
1:B:404:GLN:HB3	1:B:405:PRO:HD2	1.97	0.46
1:A:71:THR:HG21	1:A:112:THR:HB	1.97	0.46
1:B:103:SER:HB2	9:B:2088:HOH:O	2.16	0.46
1:B:331:MET:HE2	9:B:2014:HOH:O	2.16	0.46
1:B:348:SER:HA	5:B:711:NAG:H82	1.97	0.46
1:A:336:PRO:HD3	9:A:2164:HOH:O	2.15	0.46
1:A:443:GLY:N	9:A:2380:HOH:O	2.20	0.46
1:B:263:ASP:OD2	1:B:285:TYR:HA	2.15	0.46
1:A:11:GLY:HA3	1:A:53:LEU:HD12	1.98	0.45

Continued on next page...

Continued from previous page...

Atom-1	Atom-2	Interatomic distance (Å)	Clash overlap (Å)
1:A:47:VAL:HG22	1:A:64:LEU:CD2	2.47	0.45
1:A:156:GLY:N	9:A:2150:HOH:O	2.48	0.45
1:B:228:LYS:HA	1:B:231:LEU:HD12	1.99	0.45
1:B:15:VAL:O	1:B:15:VAL:CG2	2.64	0.44
1:B:112:THR:HG21	9:B:2084:HOH:O	2.16	0.44
1:B:168[B]:ASP:HA	4:B:550:HEM:HBA2	1.99	0.44
1:B:91:GLN:OE1	1:B:217:ARG:HD3	2.17	0.44
1:B:101:SER:C	1:B:103:SER:H	2.20	0.44
1:B:176:ASN:HA	1:B:177:GLY:HA2	1.87	0.44
1:B:383:PHE:CG	1:B:384:PRO:HA	2.53	0.44
1:A:21:LYS:HD3	1:A:152:SER:CB	2.26	0.44
1:A:235:PRO:O	1:A:244:ARG:HD2	2.17	0.44
1:B:168[A]:ASP:HA	4:B:550:HEM:HBA2	2.00	0.44
1:A:223:VAL:N	1:A:224:PRO:HD2	2.33	0.43
1:A:223:VAL:N	1:A:224:PRO:CD	2.80	0.43
1:A:406:ARG:HG2	1:A:406:ARG:HH11	1.83	0.43
1:B:145:LYS:HE3	9:B:2130:HOH:O	2.17	0.43
1:B:186:ASN:OD1	1:B:187:ILE:N	2.51	0.43
1:B:145:LYS:CE	1:B:148:SER:CB	2.97	0.43
1:A:411:LEU:HD12	1:A:420:LEU:HD12	2.01	0.43
1:A:314:LEU:HD12	1:A:325:ALA:HB2	2.01	0.43
1:B:27:PHE:CE2	1:B:118:ILE:HG13	2.53	0.43
1:B:304:HIS:CD2	4:B:550:HEM:NA	2.87	0.43
1:B:389:PRO:HD2	9:B:2227:HOH:O	2.19	0.43
1:A:162:GLU:HG3	1:A:166:PHE:O	2.19	0.43
1:B:80:ASP:OD1	1:B:80:ASP:N	2.43	0.43
1:B:412:LEU:HA	1:B:413:PRO:HD3	1.94	0.43
1:B:220:GLU:HG3	9:B:2184:HOH:O	2.19	0.43
1:B:223:VAL:HB	1:B:224:PRO:CD	2.48	0.43
1:B:43:ILE:O	1:B:44:ALA:C	2.58	0.42
1:B:7:ASP:OD1	1:B:51:THR:OG1	2.25	0.42
1:A:139:PHE:HB3	1:A:143:ILE:HG12	2.00	0.42
1:A:335:ILE:HA	1:A:336:PRO:HD3	1.87	0.42
1:B:346:SER:O	1:B:348:SER:N	2.51	0.42
1:A:180:THR:HA	1:A:181:PRO:HD3	1.84	0.42
1:B:284:THR:O	1:B:285:TYR:HB2	2.20	0.42
1:B:322:ASN:O	1:B:323:LEU:HD23	2.20	0.42
1:A:27:PHE:CE2	1:A:118:ILE:HG13	2.55	0.42
1:B:37:THR:O	1:B:41:SER:HB2	2.19	0.42
1:A:22:GLN:HA	1:A:120:LEU:O	2.19	0.42
1:B:154:ARG:NH2	9:B:2139:HOH:O	2.53	0.41

Continued on next page...

Continued from previous page...

Atom-1	Atom-2	Interatomic distance (Å)	Clash overlap (Å)
1:B:235:PRO:HD3	1:B:248:LEU:HB2	2.02	0.41
1:B:61:LEU:CG	1:B:62:VAL:N	2.81	0.41
1:A:183:PRO:HG2	1:A:278:GLN:O	2.20	0.41
1:B:161:HIS:N	1:B:161:HIS:CD2	2.88	0.41
1:A:222:LEU:HB3	1:A:225:GLU:OE1	2.20	0.41
1:B:36:LYS:NZ	1:B:448:ALA:O	2.41	0.41
1:B:78:VAL:HG21	1:B:446:LEU:HD23	2.03	0.41
1:B:228:LYS:HE3	1:B:232:ASP:OD2	2.20	0.41
1:B:328:ASN:O	1:B:373:LEU:HD11	2.21	0.41
1:B:415:ASN:ND2	9:B:2277:HOH:O	2.52	0.41
1:B:396:PRO:O	1:B:406:ARG:NH1	2.49	0.41
8:B:801:TAM:HN1	8:B:801:TAM:H41	1.59	0.41
1:B:394:LEU:HD13	8:B:801:TAM:H61	2.03	0.40
1:B:114:ILE:HG13	1:B:146:LEU:HD12	2.04	0.40
1:B:1:ALA:C	1:B:2:THR:OG1	2.60	0.40
1:B:301:PHE:CE1	1:B:387:LYS:HD2	2.56	0.40

There are no symmetry-related clashes.

5.3 Torsion angles [i](#)

5.3.1 Protein backbone [i](#)

In the following table, the Percentiles column shows the percent Ramachandran outliers of the chain as a percentile score with respect to all X-ray entries followed by that with respect to entries of similar resolution.

The Analysed column shows the number of residues for which the backbone conformation was analysed, and the total number of residues.

Mol	Chain	Analysed	Favoured	Allowed	Outliers	Percentiles	
1	A	447/448 (100%)	431 (96%)	16 (4%)	0	100	100
1	B	447/448 (100%)	417 (93%)	25 (6%)	5 (1%)	14	9
All	All	894/896 (100%)	848 (95%)	41 (5%)	5 (1%)	25	21

All (5) Ramachandran outliers are listed below:

Mol	Chain	Res	Type
1	B	2	THR
1	B	61	LEU

Continued on next page...

Continued from previous page...

Mol	Chain	Res	Type
1	B	288	ALA
1	B	346	SER
1	B	347	ALA

5.3.2 Protein sidechains [i](#)

In the following table, the Percentiles column shows the percent sidechain outliers of the chain as a percentile score with respect to all X-ray entries followed by that with respect to entries of similar resolution.

The Analysed column shows the number of residues for which the sidechain conformation was analysed, and the total number of residues.

Mol	Chain	Analysed	Rotameric	Outliers	Percentiles	
1	A	355/354 (100%)	344 (97%)	11 (3%)	40	43
1	B	355/354 (100%)	329 (93%)	26 (7%)	14	11
All	All	710/708 (100%)	673 (95%)	37 (5%)	23	21

All (37) residues with a non-rotameric sidechain are listed below:

Mol	Chain	Res	Type
1	A	2	THR
1	A	82	LEU
1	A	134	SER
1	A	144	SER
1	A	152	SER
1	A	291	ASP
1	A	333	SER
1	A	363	GLN
1	A	406	ARG
1	A	408	VAL
1	A	419	SER
1	B	2	THR
1	B	7	ASP
1	B	41	SER
1	B	54	SER
1	B	61	LEU
1	B	65	ASN
1	B	80	ASP
1	B	97	SER
1	B	103	SER

Continued on next page...

Continued from previous page...

Mol	Chain	Res	Type
1	B	104	SER
1	B	162	GLU
1	B	182	LEU
1	B	241	LEU
1	B	265	THR
1	B	267	THR
1	B	280	ASN
1	B	292	LEU
1	B	319	THR
1	B	324	SER
1	B	343	SER
1	B	346	SER
1	B	388	THR
1	B	394	LEU
1	B	406	ARG
1	B	417	SER
1	B	421	SER

Sometimes sidechains can be flipped to improve hydrogen bonding and reduce clashes. All (12) such sidechains are listed below:

Mol	Chain	Res	Type
1	A	20	GLN
1	A	199	ASN
1	A	233	ASN
1	A	242	GLN
1	A	382	ASN
1	B	233	ASN
1	B	242	GLN
1	B	280	ASN
1	B	298	HIS
1	B	375	GLN
1	B	401	ASN
1	B	402	ASN

5.3.3 RNA [i](#)

There are no RNA molecules in this entry.

5.4 Non-standard residues in protein, DNA, RNA chains [i](#)

There are no non-standard protein/DNA/RNA residues in this entry.

5.5 Carbohydrates [i](#)

5 monosaccharides are modelled in this entry.

In the following table, the Counts columns list the number of bonds (or angles) for which Mogul statistics could be retrieved, the number of bonds (or angles) that are observed in the model and the number of bonds (or angles) that are defined in the Chemical Component Dictionary. The Link column lists molecule types, if any, to which the group is linked. The Z score for a bond length (or angle) is the number of standard deviations the observed value is removed from the expected value. A bond length (or angle) with $|Z| > 2$ is considered an outlier worth inspection. RMSZ is the root-mean-square of all Z scores of the bond lengths (or angles).

Mol	Type	Chain	Res	Link	Bond lengths			Bond angles		
					Counts	RMSZ	# Z > 2	Counts	RMSZ	# Z > 2
2	NAG	C	1	2,1	14,14,15	0.64	0	17,19,21	1.21	2 (11%)
2	NAG	C	2	2	14,14,15	0.64	0	17,19,21	0.94	0
2	BMA	C	3	2	11,11,12	0.53	0	15,15,17	0.99	1 (6%)
3	NAG	D	1	3,1	14,14,15	0.51	0	17,19,21	0.89	1 (5%)
3	NAG	D	2	3	14,14,15	0.64	0	17,19,21	1.17	2 (11%)

In the following table, the Chirals column lists the number of chiral outliers, the number of chiral centers analysed, the number of these observed in the model and the number defined in the Chemical Component Dictionary. Similar counts are reported in the Torsion and Rings columns. '-' means no outliers of that kind were identified.

Mol	Type	Chain	Res	Link	Chirals	Torsions	Rings
2	NAG	C	1	2,1	-	0/6/23/26	0/1/1/1
2	NAG	C	2	2	-	2/6/23/26	0/1/1/1
2	BMA	C	3	2	-	1/2/19/22	1/1/1/1
3	NAG	D	1	3,1	-	2/6/23/26	0/1/1/1
3	NAG	D	2	3	-	2/6/23/26	0/1/1/1

There are no bond length outliers.

All (6) bond angle outliers are listed below:

Mol	Chain	Res	Type	Atoms	Z	Observed(°)	Ideal(°)
2	C	3	BMA	C1-O5-C5	2.87	116.08	112.19
2	C	1	NAG	O5-C1-C2	-2.68	107.06	111.29

Continued on next page...

Continued from previous page...

Mol	Chain	Res	Type	Atoms	Z	Observed(°)	Ideal(°)
3	D	1	NAG	O5-C1-C2	-2.56	107.25	111.29
3	D	2	NAG	C1-O5-C5	-2.55	108.73	112.19
3	D	2	NAG	C4-C3-C2	2.47	114.63	111.02
2	C	1	NAG	C2-N2-C7	-2.18	119.80	122.90

There are no chirality outliers.

All (7) torsion outliers are listed below:

Mol	Chain	Res	Type	Atoms
3	D	1	NAG	O5-C5-C6-O6
3	D	1	NAG	C4-C5-C6-O6
2	C	2	NAG	C4-C5-C6-O6
2	C	2	NAG	O5-C5-C6-O6
2	C	3	BMA	O5-C5-C6-O6
3	D	2	NAG	O5-C5-C6-O6
3	D	2	NAG	C4-C5-C6-O6

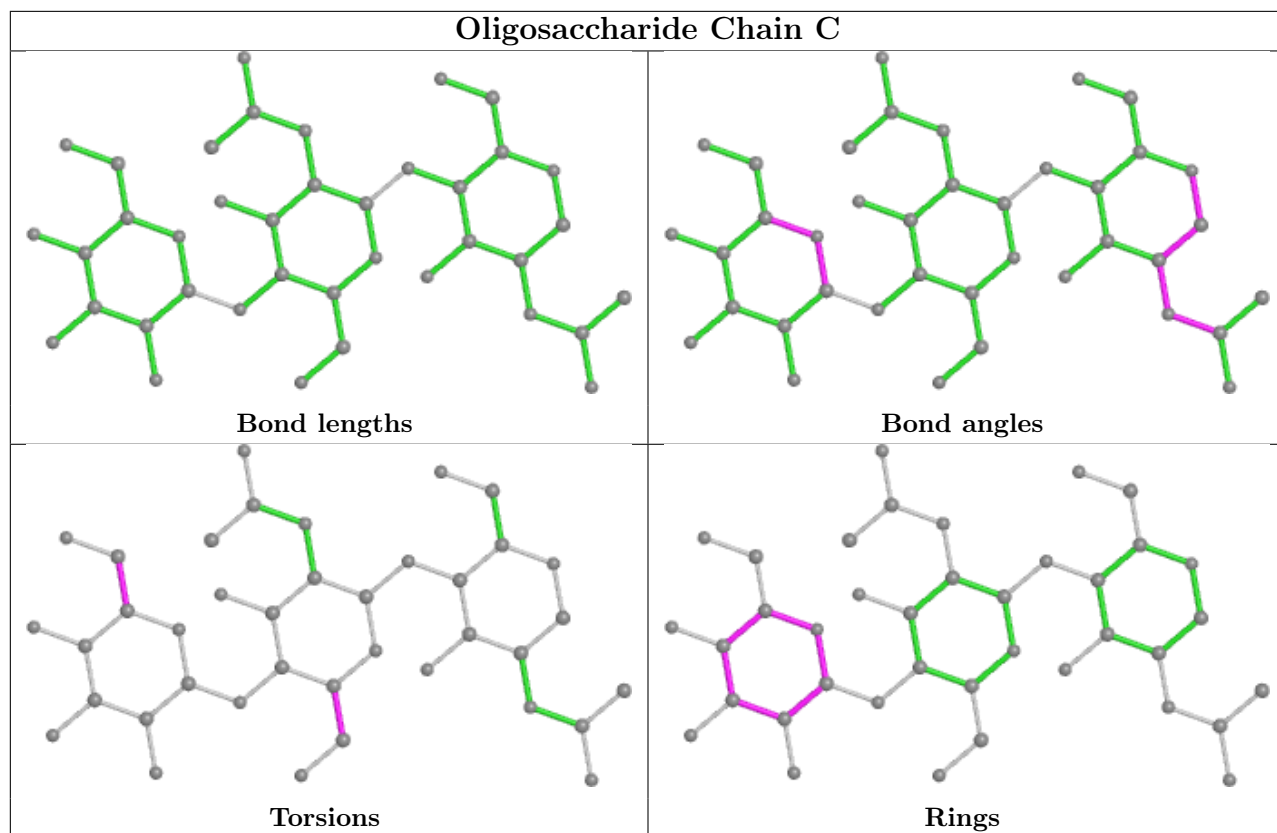
All (1) ring outliers are listed below:

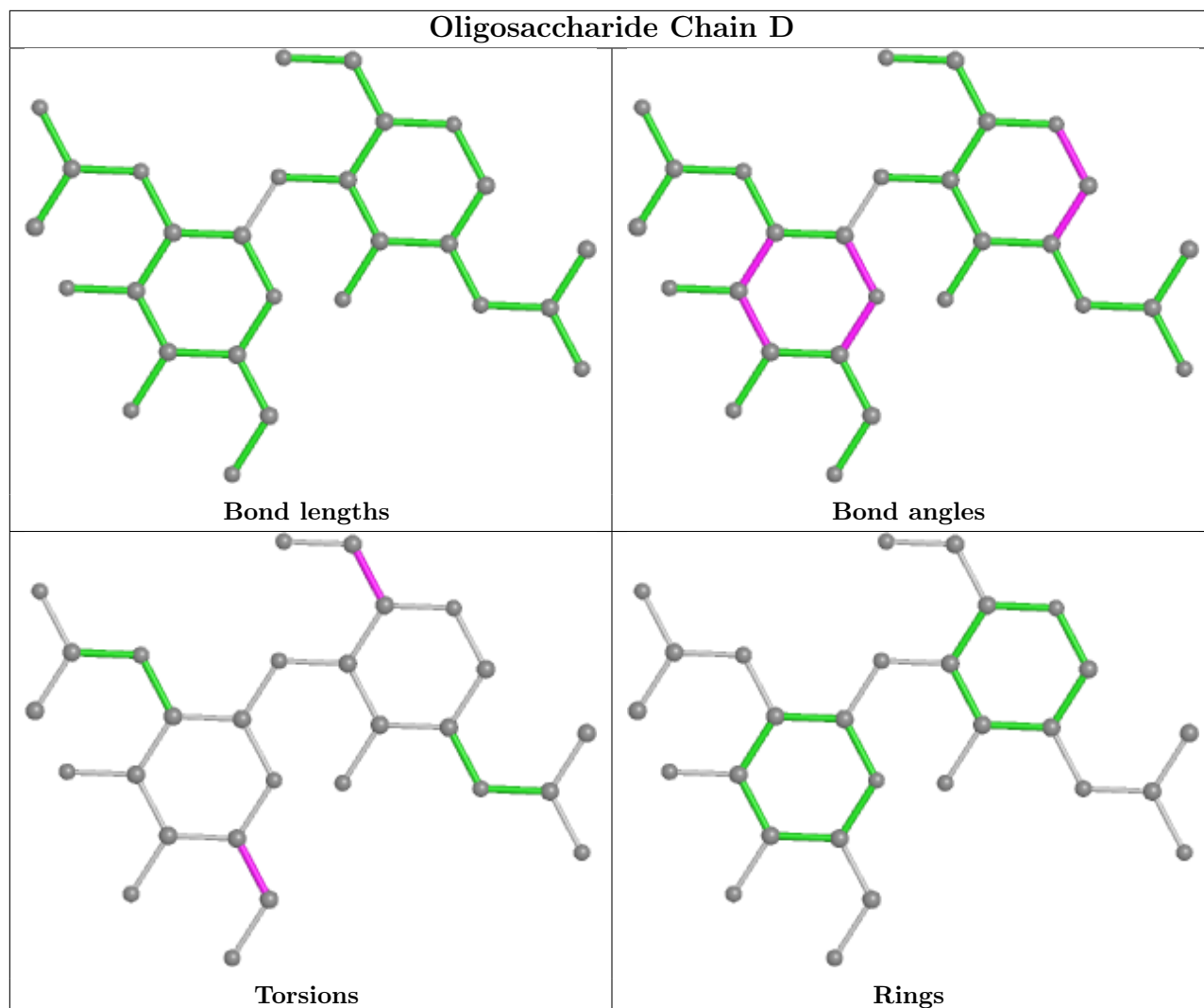
Mol	Chain	Res	Type	Atoms
2	C	3	BMA	C1-C2-C3-C4-C5-O5

3 monomers are involved in 3 short contacts:

Mol	Chain	Res	Type	Clashes	Symm-Clashes
2	C	3	BMA	2	0
2	C	2	NAG	2	0
3	D	2	NAG	1	0

The following is a two-dimensional graphical depiction of Mogul quality analysis of bond lengths, bond angles, torsion angles, and ring geometry for oligosaccharide.





5.6 Ligand geometry [i](#)

13 ligands are modelled in this entry.

In the following table, the Counts columns list the number of bonds (or angles) for which Mogul statistics could be retrieved, the number of bonds (or angles) that are observed in the model and the number of bonds (or angles) that are defined in the Chemical Component Dictionary. The Link column lists molecule types, if any, to which the group is linked. The Z score for a bond length (or angle) is the number of standard deviations the observed value is removed from the expected value. A bond length (or angle) with $|Z| > 2$ is considered an outlier worth inspection. RMSZ is the root-mean-square of all Z scores of the bond lengths (or angles).

Mol	Type	Chain	Res	Link	Bond lengths			Bond angles		
					Counts	RMSZ	$\# Z > 2$	Counts	RMSZ	$\# Z > 2$
6	GOL	B	800	-	5,5,5	0.39	0	5,5,5	0.33	0
7	ACT	A	803	-	3,3,3	0.75	0	3,3,3	1.33	0
6	GOL	B	802	-	5,5,5	0.36	0	5,5,5	0.16	0
6	GOL	A	801	-	5,5,5	0.37	0	5,5,5	0.26	0

Mol	Type	Chain	Res	Link	Bond lengths			Bond angles		
					Counts	RMSZ	# Z > 2	Counts	RMSZ	# Z > 2
4	HEM	A	550	1	41,50,50	1.92	10 (24%)	45,82,82	1.96	12 (26%)
5	NAG	B	711	1	14,14,15	0.71	0	17,19,21	1.09	1 (5%)
6	GOL	B	803	-	5,5,5	0.34	0	5,5,5	0.46	0
5	NAG	A	721	1	14,14,15	0.62	0	17,19,21	1.35	3 (17%)
8	TAM	B	801	-	7,10,10	0.51	0	9,12,12	0.45	0
4	HEM	B	550	1	41,50,50	1.99	10 (24%)	45,82,82	1.90	9 (20%)
5	NAG	A	711	1	14,14,15	0.50	0	17,19,21	1.02	1 (5%)
6	GOL	A	800	-	5,5,5	0.39	0	5,5,5	0.21	0
6	GOL	A	802	-	5,5,5	0.27	0	5,5,5	0.47	0

In the following table, the Chirals column lists the number of chiral outliers, the number of chiral centers analysed, the number of these observed in the model and the number defined in the Chemical Component Dictionary. Similar counts are reported in the Torsion and Rings columns. '-' means no outliers of that kind were identified.

Mol	Type	Chain	Res	Link	Chirals	Torsions	Rings
6	GOL	B	800	-	-	4/4/4/4	-
6	GOL	B	802	-	-	4/4/4/4	-
6	GOL	A	801	-	-	0/4/4/4	-
4	HEM	A	550	1	-	1/12/54/54	-
5	NAG	B	711	1	1/1/5/7	0/6/23/26	0/1/1/1
6	GOL	B	803	-	-	3/4/4/4	-
5	NAG	A	721	1	-	0/6/23/26	0/1/1/1
8	TAM	B	801	-	-	10/12/12/12	-
4	HEM	B	550	1	-	3/12/54/54	-
5	NAG	A	711	1	-	0/6/23/26	0/1/1/1
6	GOL	A	800	-	-	2/4/4/4	-
6	GOL	A	802	-	-	3/4/4/4	-

All (20) bond length outliers are listed below:

Mol	Chain	Res	Type	Atoms	Z	Observed(Å)	Ideal(Å)
4	B	550	HEM	C3D-C2D	7.46	1.52	1.36
4	A	550	HEM	C3D-C2D	7.21	1.52	1.36
4	B	550	HEM	C3C-C2C	-4.43	1.34	1.40
4	A	550	HEM	C3C-CAC	3.53	1.55	1.47
4	B	550	HEM	C3C-CAC	3.43	1.54	1.47
4	A	550	HEM	C3C-C2C	-3.36	1.35	1.40
4	A	550	HEM	CAB-C3B	3.21	1.56	1.47

Continued on next page...

Continued from previous page...

Mol	Chain	Res	Type	Atoms	Z	Observed(Å)	Ideal(Å)
4	A	550	HEM	FE-NB	2.86	2.11	1.96
4	A	550	HEM	CAA-C2A	2.63	1.55	1.52
4	B	550	HEM	FE-NB	2.61	2.09	1.96
4	B	550	HEM	FE-ND	2.58	2.09	1.96
4	B	550	HEM	CAA-C2A	2.44	1.55	1.52
4	B	550	HEM	CAB-C3B	2.31	1.53	1.47
4	A	550	HEM	CMB-C2B	2.25	1.55	1.50
4	B	550	HEM	C4A-NA	2.20	1.40	1.36
4	A	550	HEM	FE-ND	2.20	2.07	1.96
4	A	550	HEM	C1B-NB	-2.18	1.36	1.40
4	B	550	HEM	CMB-C2B	2.17	1.55	1.50
4	B	550	HEM	CMD-C2D	2.10	1.55	1.50
4	A	550	HEM	C4A-NA	2.04	1.40	1.36

All (26) bond angle outliers are listed below:

Mol	Chain	Res	Type	Atoms	Z	Observed(°)	Ideal(°)
4	A	550	HEM	C4D-ND-C1D	6.86	112.16	105.07
4	B	550	HEM	C4D-ND-C1D	5.40	110.65	105.07
4	B	550	HEM	CMD-C2D-C1D	4.61	132.06	125.04
4	A	550	HEM	C4B-CHC-C1C	4.31	128.25	122.56
4	B	550	HEM	C4C-CHD-C1D	4.03	127.88	122.56
4	A	550	HEM	C1B-NB-C4B	3.48	108.67	105.07
5	A	721	NAG	C2-N2-C7	-3.19	118.35	122.90
4	A	550	HEM	C3B-C2B-C1B	3.00	108.71	106.49
4	B	550	HEM	C1B-NB-C4B	2.92	108.09	105.07
4	B	550	HEM	CAA-CBA-CGA	-2.90	105.62	113.76
4	B	550	HEM	CAD-CBD-CGD	-2.86	107.45	113.60
4	B	550	HEM	C4A-C3A-C2A	2.80	108.94	107.00
4	A	550	HEM	CBA-CAA-C2A	-2.78	107.87	112.62
4	B	550	HEM	CHA-C4D-ND	2.76	127.79	124.38
4	A	550	HEM	CAD-CBD-CGD	-2.53	108.16	113.60
4	A	550	HEM	C4C-CHD-C1D	2.51	125.87	122.56
4	A	550	HEM	CHA-C4D-ND	2.49	127.45	124.38
5	A	711	NAG	O5-C5-C6	2.41	110.99	107.20
5	B	711	NAG	C4-C3-C2	2.39	114.52	111.02
5	A	721	NAG	O5-C5-C6	2.27	110.77	107.20
4	B	550	HEM	O1A-CGA-CBA	-2.21	115.98	123.08
5	A	721	NAG	O3-C3-C4	-2.21	105.25	110.35
4	A	550	HEM	CMA-C3A-C4A	-2.20	125.08	128.46
4	A	550	HEM	CHD-C1D-ND	2.10	126.72	124.43
4	A	550	HEM	CAD-C3D-C4D	2.08	128.29	124.66

Continued on next page...

Continued from previous page...

Mol	Chain	Res	Type	Atoms	Z	Observed(°)	Ideal(°)
4	A	550	HEM	CMB-C2B-C1B	-2.05	121.92	125.04

All (1) chirality outliers are listed below:

Mol	Chain	Res	Type	Atom
5	B	711	NAG	C1

All (30) torsion outliers are listed below:

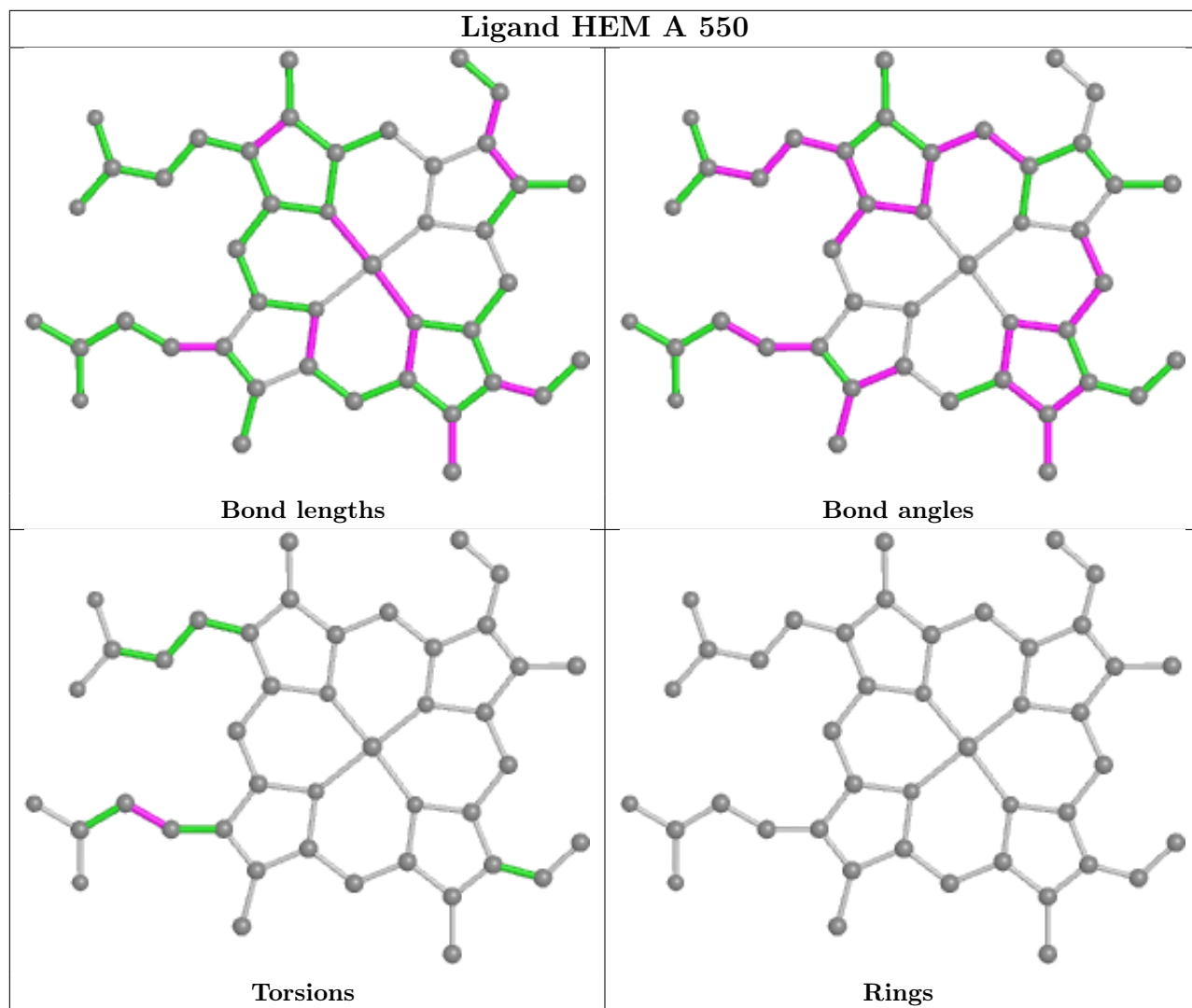
Mol	Chain	Res	Type	Atoms
6	A	800	GOL	O1-C1-C2-C3
6	A	802	GOL	C1-C2-C3-O3
6	A	802	GOL	O2-C2-C3-O3
6	B	800	GOL	O1-C1-C2-C3
6	B	802	GOL	C1-C2-C3-O3
6	B	803	GOL	O1-C1-C2-C3
8	B	801	TAM	C2-C-C1-C4
8	B	801	TAM	C3-C-C1-C4
8	B	801	TAM	N-C-C1-C4
8	B	801	TAM	C1-C-C2-C5
8	B	801	TAM	N-C-C2-C5
8	B	801	TAM	C2-C-C3-C6
8	B	801	TAM	N-C-C3-C6
8	B	801	TAM	C-C1-C4-O4
4	A	550	HEM	C2A-CAA-CBA-CGA
4	B	550	HEM	C2A-CAA-CBA-CGA
6	B	800	GOL	O1-C1-C2-O2
6	B	802	GOL	O2-C2-C3-O3
6	B	800	GOL	C1-C2-C3-O3
6	B	802	GOL	O1-C1-C2-C3
6	A	800	GOL	O1-C1-C2-O2
6	B	803	GOL	O1-C1-C2-O2
8	B	801	TAM	C3-C-C2-C5
8	B	801	TAM	C1-C-C3-C6
6	A	802	GOL	O1-C1-C2-O2
6	B	803	GOL	O2-C2-C3-O3
6	B	800	GOL	O2-C2-C3-O3
4	B	550	HEM	CAD-CBD-CGD-O1D
4	B	550	HEM	CAD-CBD-CGD-O2D
6	B	802	GOL	O1-C1-C2-O2

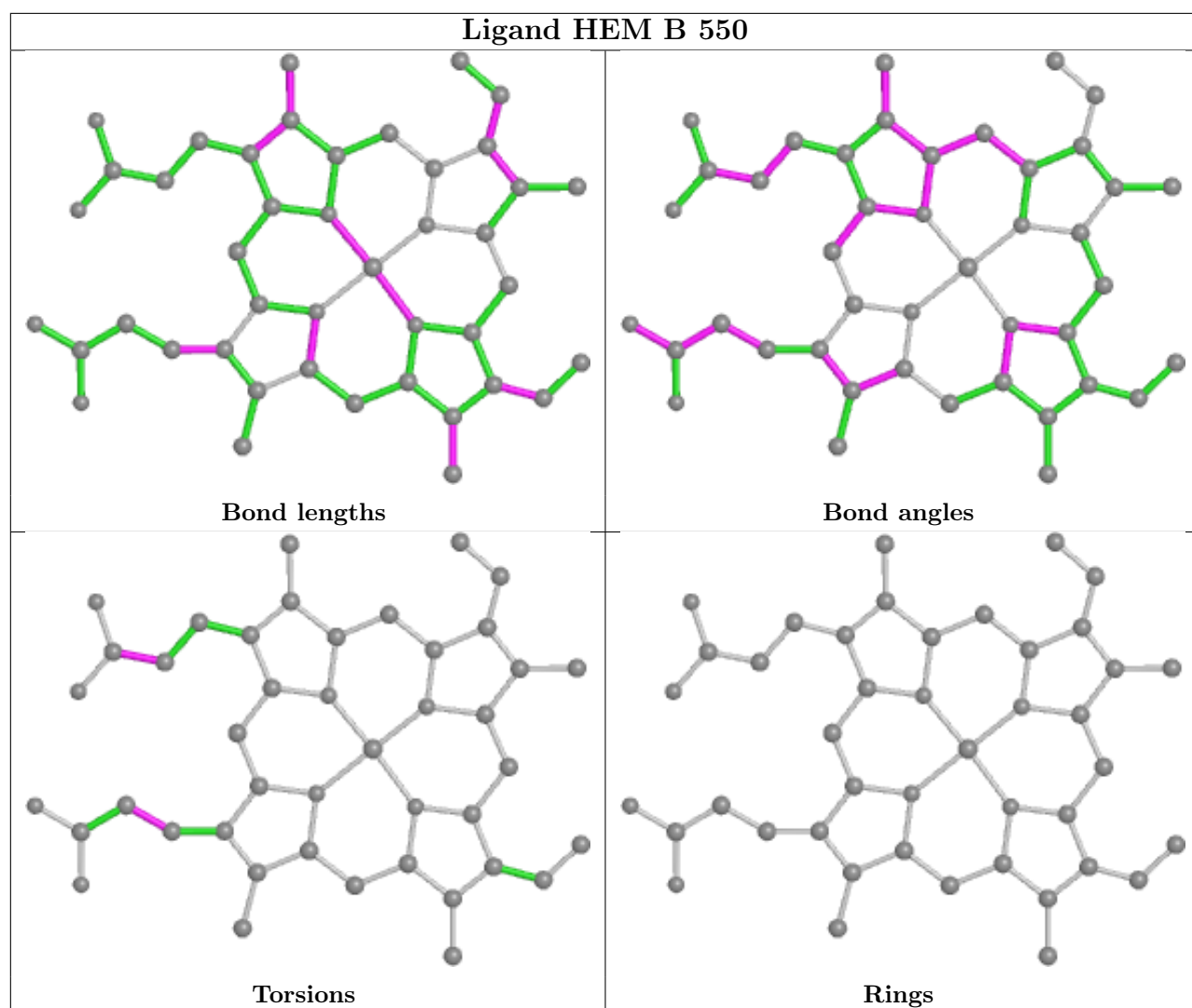
There are no ring outliers.

8 monomers are involved in 12 short contacts:

Mol	Chain	Res	Type	Clashes	Symm-Clashes
6	A	801	GOL	1	0
5	B	711	NAG	1	0
6	B	803	GOL	1	0
8	B	801	TAM	3	0
4	B	550	HEM	3	0
5	A	711	NAG	1	0
6	A	800	GOL	1	0
6	A	802	GOL	1	0

The following is a two-dimensional graphical depiction of Mogul quality analysis of bond lengths, bond angles, torsion angles, and ring geometry for all instances of the Ligand of Interest. In addition, ligands with molecular weight > 250 and outliers as shown on the validation Tables will also be included. For torsion angles, if less than 5% of the Mogul distribution of torsion angles is within 10 degrees of the torsion angle in question, then that torsion angle is considered an outlier. Any bond that is central to one or more torsion angles identified as an outlier by Mogul will be highlighted in the graph. For rings, the root-mean-square deviation (RMSD) between the ring in question and similar rings identified by Mogul is calculated over all ring torsion angles. If the average RMSD is greater than 60 degrees and the minimal RMSD between the ring in question and any Mogul-identified rings is also greater than 60 degrees, then that ring is considered an outlier. The outliers are highlighted in purple. The color gray indicates Mogul did not find sufficient equivalents in the CSD to analyse the geometry.





5.7 Other polymers [i](#)

There are no such residues in this entry.

5.8 Polymer linkage issues [i](#)

There are no chain breaks in this entry.

6 Fit of model and data

6.1 Protein, DNA and RNA chains

In the following table, the column labelled ‘#RSRZ > 2’ contains the number (and percentage) of RSRZ outliers, followed by percent RSRZ outliers for the chain as percentile scores relative to all X-ray entries and entries of similar resolution. The OWAB column contains the minimum, median, 95th percentile and maximum values of the occupancy-weighted average B-factor per residue. The column labelled ‘Q < 0.9’ lists the number of (and percentage) of residues with an average occupancy less than 0.9.

Mol	Chain	Analysed	<RSRZ>	#RSRZ>2	OWAB(Å ²)	Q<0.9
1	A	448/448 (100%)	-0.25	3 (0%) 87 89	5, 19, 33, 65	0
1	B	448/448 (100%)	0.21	23 (5%) 28 33	10, 28, 51, 68	0
All	All	896/896 (100%)	-0.02	26 (2%) 51 57	5, 22, 46, 68	0

All (26) RSRZ outliers are listed below:

Mol	Chain	Res	Type	RSRZ
1	B	2	THR	6.8
1	B	1	ALA	6.5
1	A	1	ALA	4.9
1	A	2	THR	3.6
1	B	99	LYS	3.4
1	B	98	PHE	3.4
1	B	288	ALA	3.4
1	B	412	LEU	3.1
1	B	268	ALA	3.0
1	B	285	TYR	3.0
1	B	238	SER	3.0
1	B	386	GLY	2.9
1	B	390	ALA	2.8
1	B	236	ALA	2.6
1	B	242	GLN	2.4
1	B	388	THR	2.4
1	B	97	SER	2.4
1	B	407	VAL	2.3
1	B	292	LEU	2.3
1	A	42	ASP	2.3
1	B	239	GLY	2.3
1	B	287	HIS	2.2
1	B	418	ALA	2.2
1	B	286	SER	2.2

Continued on next page...

Continued from previous page...

Mol	Chain	Res	Type	RSRZ
1	B	95	ALA	2.2
1	B	301	PHE	2.1

6.2 Non-standard residues in protein, DNA, RNA chains [i](#)

There are no non-standard protein/DNA/RNA residues in this entry.

6.3 Carbohydrates [i](#)

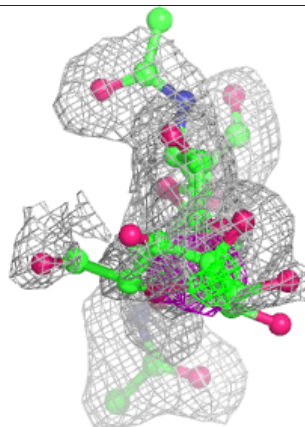
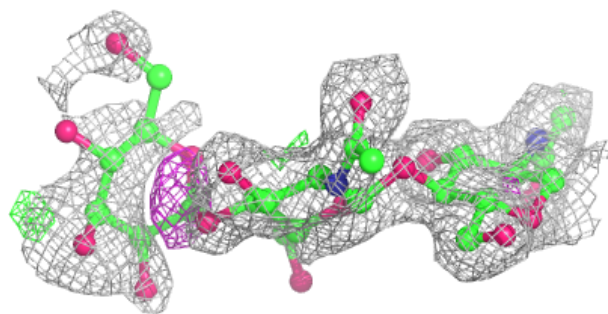
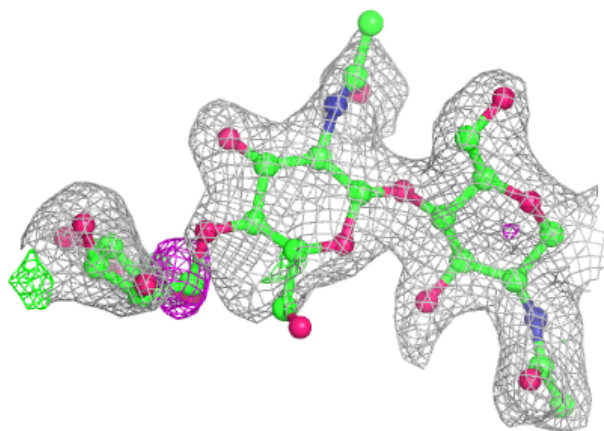
In the following table, the Atoms column lists the number of modelled atoms in the group and the number defined in the chemical component dictionary. The B-factors column lists the minimum, median, 95th percentile and maximum values of B factors of atoms in the group. The column labelled 'Q < 0.9' lists the number of atoms with occupancy less than 0.9.

Mol	Type	Chain	Res	Atoms	RSCC	RSR	B-factors(Å ²)	Q<0.9
2	BMA	C	3	11/12	0.48	0.35	53,55,56,57	0
3	NAG	D	2	14/15	0.62	0.39	63,67,68,68	0
2	NAG	C	2	14/15	0.78	0.21	42,45,50,51	0
3	NAG	D	1	14/15	0.84	0.25	54,57,60,62	0
2	NAG	C	1	14/15	0.90	0.12	27,33,36,41	0

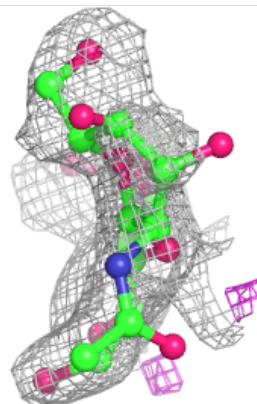
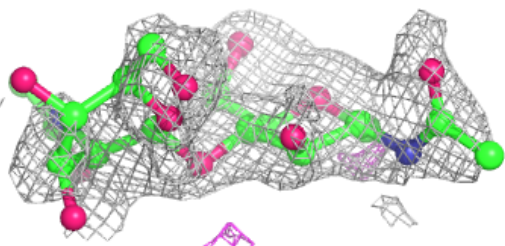
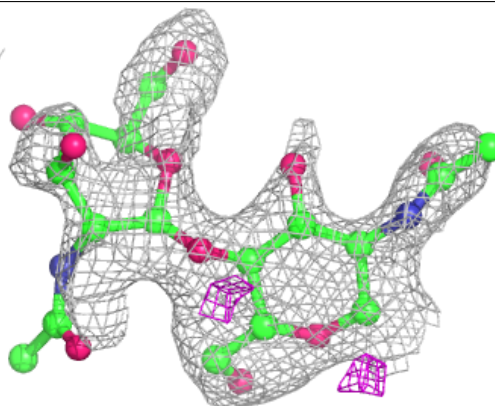
The following is a graphical depiction of the model fit to experimental electron density for oligosaccharide. Each fit is shown from different orientation to approximate a three-dimensional view.

Electron density around Chain C:

$2mF_o-DF_c$ (at 0.7 rmsd) in gray
 mF_o-DF_c (at 3 rmsd) in purple (negative)
and green (positive)

**Electron density around Chain D:**

$2mF_o-DF_c$ (at 0.7 rmsd) in gray
 mF_o-DF_c (at 3 rmsd) in purple (negative)
and green (positive)



6.4 Ligands

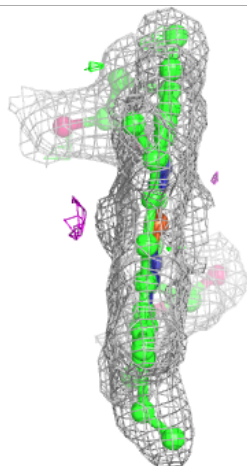
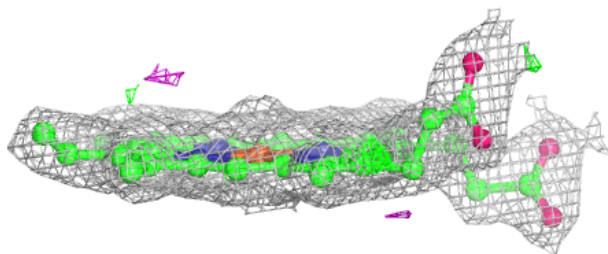
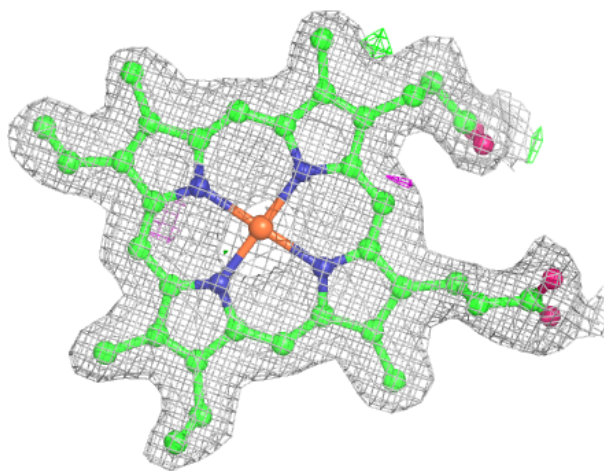
In the following table, the Atoms column lists the number of modelled atoms in the group and the number defined in the chemical component dictionary. The B-factors column lists the minimum, median, 95th percentile and maximum values of B factors of atoms in the group. The column labelled 'Q< 0.9' lists the number of atoms with occupancy less than 0.9.

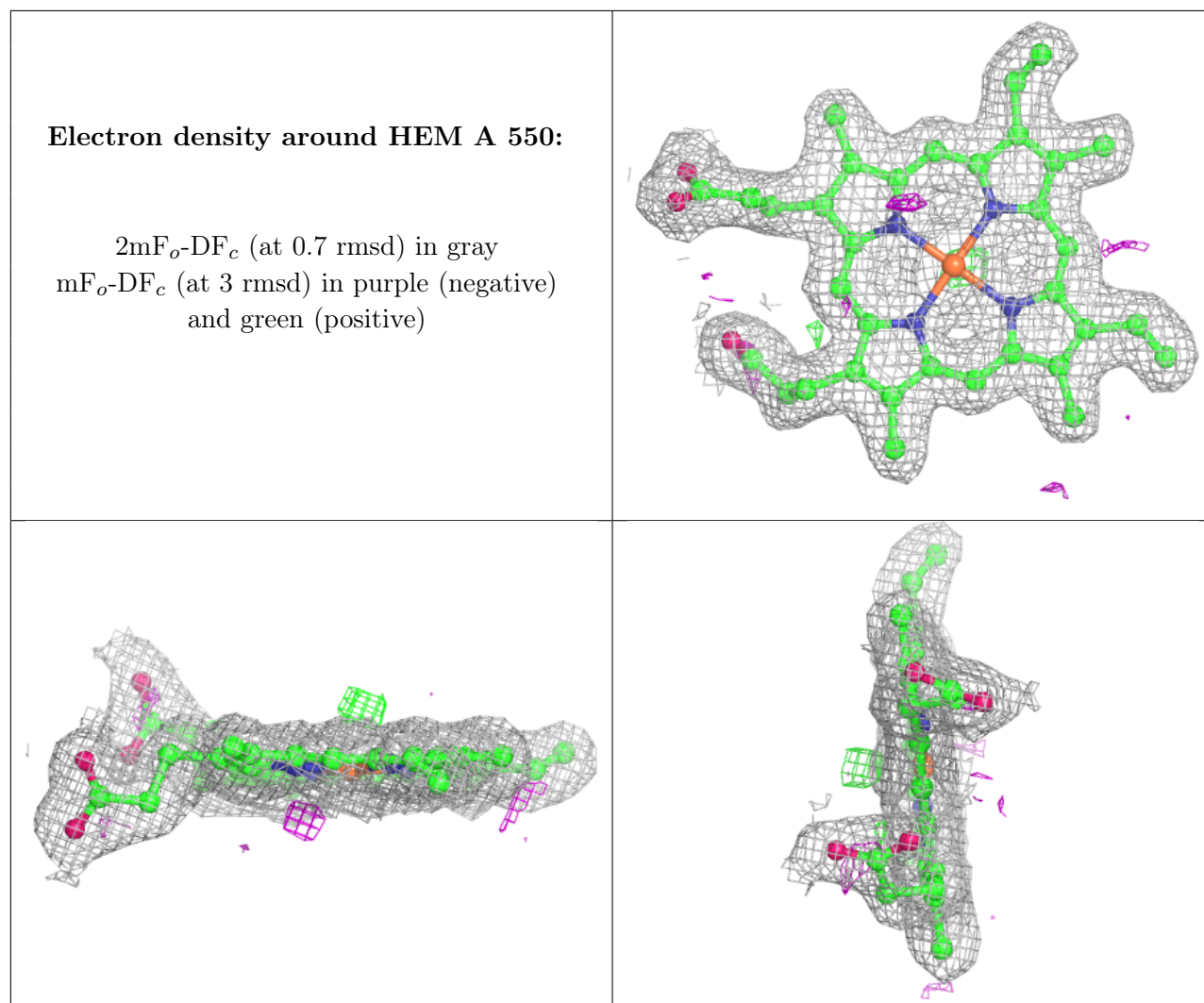
Mol	Type	Chain	Res	Atoms	RSCC	RSR	B-factors(Å ²)	Q<0.9
6	GOL	B	802	6/6	0.68	0.25	59,60,61,61	0
6	GOL	B	803	6/6	0.71	0.23	47,48,49,49	0
8	TAM	B	801	11/11	0.73	0.29	53,54,56,56	0
5	NAG	B	711	14/15	0.78	0.24	44,48,50,53	0
7	ACT	A	803	4/4	0.79	0.19	67,67,67,68	0
6	GOL	A	801	6/6	0.79	0.15	51,52,52,53	0
6	GOL	A	800	6/6	0.83	0.19	46,47,48,48	0
6	GOL	A	802	6/6	0.83	0.22	48,49,51,51	0
6	GOL	B	800	6/6	0.91	0.17	57,58,58,59	0
5	NAG	A	721	14/15	0.92	0.14	19,26,29,30	0
5	NAG	A	711	14/15	0.94	0.12	27,30,32,34	0
4	HEM	B	550	43/43	0.97	0.12	10,17,26,28	0
4	HEM	A	550	43/43	0.98	0.10	3,8,13,14	0

The following is a graphical depiction of the model fit to experimental electron density of all instances of the Ligand of Interest. In addition, ligands with molecular weight > 250 and outliers as shown on the geometry validation Tables will also be included. Each fit is shown from different orientation to approximate a three-dimensional view.

Electron density around HEM B 550:

$2mF_o-DF_c$ (at 0.7 rmsd) in gray
 mF_o-DF_c (at 3 rmsd) in purple (negative)
and green (positive)





6.5 Other polymers [i](#)

There are no such residues in this entry.