



wwPDB X-ray Structure Validation Summary Report ⓘ

Oct 12, 2021 – 03:52 PM EDT

PDB ID : 2AWZ
Title : Hepatitis C Virus NS5b RNA Polymerase in complex with a covalent inhibitor (5h)
Authors : Powers, J.P.; Piper, D.E.; Li, Y.; Mayorga, V.; Anzola, J.; Chen, J.M.; Jaen, J.C.; Lee, G.; Liu, J.; Peterson, M.G.; Tonn, G.R.; Ye, Q.; Walker, N.P.; Wang, Z.
Deposited on : 2005-09-02
Resolution : 2.15 Å(reported)

This is a wwPDB X-ray Structure Validation Summary Report for a publicly released PDB entry.

We welcome your comments at validation@mail.wwpdb.org

A user guide is available at

<https://www.wwpdb.org/validation/2017/XrayValidationReportHelp>

with specific help available everywhere you see the ⓘ symbol.

The following versions of software and data (see [references ⓘ](#)) were used in the production of this report:

MolProbity : 4.02b-467
Mogul : 1.8.5 (274361), CSD as541be (2020)
Xtriage (Phenix) : 1.13
EDS : 2.23.2
buster-report : 1.1.7 (2018)
Percentile statistics : 20191225.v01 (using entries in the PDB archive December 25th 2019)
Refmac : 5.8.0158
CCP4 : 7.0.044 (Gargrove)
Ideal geometry (proteins) : Engh & Huber (2001)
Ideal geometry (DNA, RNA) : Parkinson et al. (1996)
Validation Pipeline (wwPDB-VP) : 2.23.2

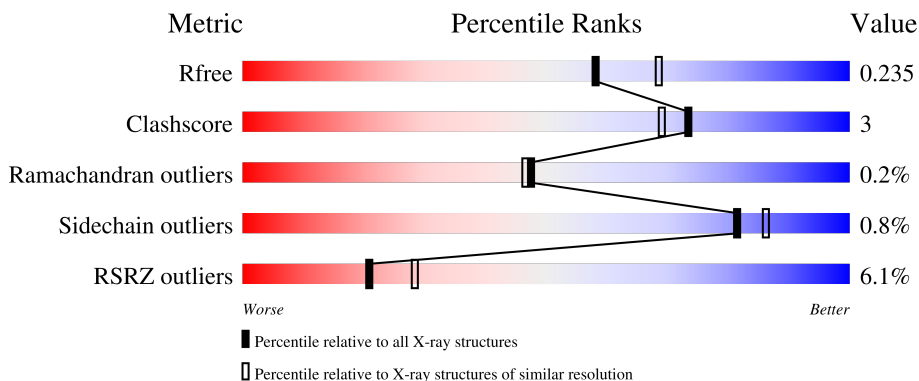
1 Overall quality at a glance

The following experimental techniques were used to determine the structure:

X-RAY DIFFRACTION

The reported resolution of this entry is 2.15 Å.

Percentile scores (ranging between 0-100) for global validation metrics of the entry are shown in the following graphic. The table shows the number of entries on which the scores are based.



Metric	Whole archive (#Entries)	Similar resolution (#Entries, resolution range(Å))
R_{free}	130704	1479 (2.16-2.16)
Clashscore	141614	1585 (2.16-2.16)
Ramachandran outliers	138981	1560 (2.16-2.16)
Sidechain outliers	138945	1559 (2.16-2.16)
RSRZ outliers	127900	1456 (2.16-2.16)

The table below summarises the geometric issues observed across the polymeric chains and their fit to the electron density. The red, orange, yellow and green segments of the lower bar indicate the fraction of residues that contain outliers for ≥ 3 , 2, 1 and 0 types of geometric quality criteria respectively. A grey segment represents the fraction of residues that are not modelled. The numeric value for each fraction is indicated below the corresponding segment, with a dot representing fractions $\leq 5\%$. The upper red bar (where present) indicates the fraction of residues that have poor fit to the electron density. The numeric value is given above the bar.

Mol	Chain	Length	Quality of chain
1	A	580	 5% 86% 10% .
1	B	580	 7% 89% 8% .

2 Entry composition

There are 4 unique types of molecules in this entry. The entry contains 9525 atoms, of which 0 are hydrogens and 0 are deuteriums.

In the tables below, the ZeroOcc column contains the number of atoms modelled with zero occupancy, the AltConf column contains the number of residues with at least one atom in alternate conformation and the Trace column contains the number of residues modelled with at most 2 atoms.

- Molecule 1 is a protein called Genome polyprotein.

Mol	Chain	Residues	Atoms					ZeroOcc	AltConf	Trace
			Total	C	N	O	S			
1	A	557	4337	2735	767	804	31	0	0	0
1	B	562	4370	2755	775	809	31	0	0	0

There are 42 discrepancies between the modelled and reference sequences:

Chain	Residue	Modelled	Actual	Comment	Reference
A	499	ALA	VAL	engineered mutation	UNP P26663
A	506	ASN	SER	engineered mutation	UNP P26663
A	514	ARG	GLN	engineered mutation	UNP P26663
A	520	ILE	THR	engineered mutation	UNP P26663
A	540	ALA	PRO	engineered mutation	UNP P26663
A	543	GLY	SER	engineered mutation	UNP P26663
A	549	SER	GLY	engineered mutation	UNP P26663
A	552	THR	VAL	engineered mutation	UNP P26663
A	563	GLY	SER	engineered mutation	UNP P26663
A	564	VAL	LEU	engineered mutation	UNP P26663
A	566	HIS	ARG	engineered mutation	UNP P26663
A	571	HIS	-	expression tag	UNP P26663
A	572	HIS	-	expression tag	UNP P26663
A	573	HIS	-	expression tag	UNP P26663
A	574	HIS	-	expression tag	UNP P26663
A	575	HIS	-	expression tag	UNP P26663
A	576	HIS	-	expression tag	UNP P26663
A	577	HIS	-	expression tag	UNP P26663
A	578	HIS	-	expression tag	UNP P26663
A	579	HIS	-	expression tag	UNP P26663
A	580	HIS	-	expression tag	UNP P26663
B	499	ALA	VAL	engineered mutation	UNP P26663
B	506	ASN	SER	engineered mutation	UNP P26663
B	514	ARG	GLN	engineered mutation	UNP P26663
B	520	ILE	THR	engineered mutation	UNP P26663

Continued on next page...

Continued from previous page...

Chain	Residue	Modelled	Actual	Comment	Reference
B	540	ALA	PRO	engineered mutation	UNP P26663
B	543	GLY	SER	engineered mutation	UNP P26663
B	549	SER	GLY	engineered mutation	UNP P26663
B	552	THR	VAL	engineered mutation	UNP P26663
B	563	GLY	SER	engineered mutation	UNP P26663
B	564	VAL	LEU	engineered mutation	UNP P26663
B	566	HIS	ARG	engineered mutation	UNP P26663
B	571	HIS	-	expression tag	UNP P26663
B	572	HIS	-	expression tag	UNP P26663
B	573	HIS	-	expression tag	UNP P26663
B	574	HIS	-	expression tag	UNP P26663
B	575	HIS	-	expression tag	UNP P26663
B	576	HIS	-	expression tag	UNP P26663
B	577	HIS	-	expression tag	UNP P26663
B	578	HIS	-	expression tag	UNP P26663
B	579	HIS	-	expression tag	UNP P26663
B	580	HIS	-	expression tag	UNP P26663

- Molecule 2 is SULFATE ION (three-letter code: SO4) (formula: O₄S).



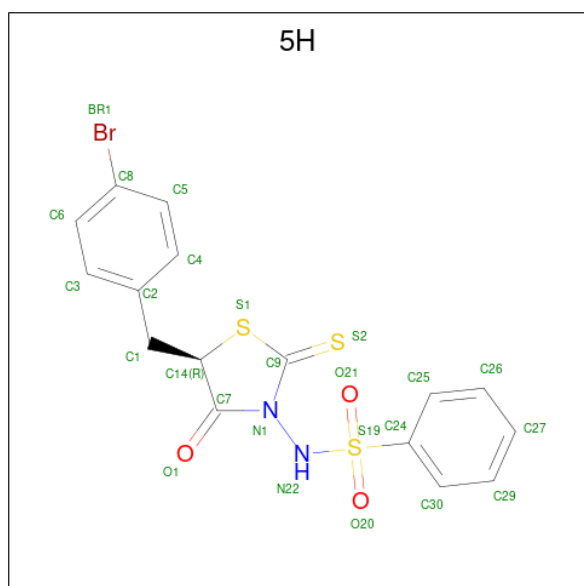
Mol	Chain	Residues	Atoms			ZeroOcc	AltConf
2	A	1	Total	O	S	0	0
			5	4	1		
2	A	1	Total	O	S	0	0
			5	4	1		
2	A	1	Total	O	S	0	0
			5	4	1		

Continued on next page...

Continued from previous page...

Mol	Chain	Residues	Atoms			ZeroOcc	AltConf
2	A	1	Total	O	S	0	0
			5	4	1		
2	B	1	Total	O	S	0	0
			5	4	1		
2	B	1	Total	O	S	0	0
			5	4	1		

- Molecule 3 is 5R-(4-BROMOPHENYLMETHYL)-3-(BENZENESULFONYLAMINO)-4-OXO-2-THIONOTHIAZOLIDINE (three-letter code: 5H) (formula: C₁₆H₁₃BrN₂O₃S₃).



Mol	Chain	Residues	Atoms					ZeroOcc	AltConf	
3	A	1	Total	Br	C	N	O	S	0	0
			25	1	16	2	3	3		
3	B	1	Total	Br	C	N	O	S	0	0
			25	1	16	2	3	3		

- Molecule 4 is water.

Mol	Chain	Residues	Atoms		ZeroOcc	AltConf
4	A	364	Total	O	0	0
			364	364		
4	B	374	Total	O	0	0
			374	374		

4 Data and refinement statistics i

Property	Value	Source
Space group	P 21 21 21	Depositor
Cell constants a, b, c, α , β , γ	87.09Å 87.02Å 162.78Å 90.00° 90.00° 90.00°	Depositor
Resolution (Å)	25.00 – 2.15 24.98 – 2.16	Depositor EDS
% Data completeness (in resolution range)	(Not available) (25.00-2.15) 96.5 (24.98-2.16)	Depositor EDS
R_{merge}	(Not available)	Depositor
R_{sym}	0.07	Depositor
$\langle I/\sigma(I) \rangle$ ¹	3.81 (at 2.15Å)	Xtrriage
Refinement program	CNS	Depositor
R, R_{free}	0.205 , 0.243 0.197 , 0.235	Depositor DCC
R_{free} test set	6552 reflections (10.07%)	wwPDB-VP
Wilson B-factor (Å ²)	27.0	Xtrriage
Anisotropy	0.216	Xtrriage
Bulk solvent k_{sol} (e/Å ³), B_{sol} (Å ²)	0.36 , 53.2	EDS
L-test for twinning ²	$\langle L \rangle = 0.50$, $\langle L^2 \rangle = 0.34$	Xtrriage
Estimated twinning fraction	0.014 for k,h,-l	Xtrriage
F_o, F_c correlation	0.94	EDS
Total number of atoms	9525	wwPDB-VP
Average B, all atoms (Å ²)	28.0	wwPDB-VP

Xtrriage's analysis on translational NCS is as follows: *The largest off-origin peak in the Patterson function is 2.92% of the height of the origin peak. No significant pseudotranslation is detected.*

¹Intensities estimated from amplitudes.

²Theoretical values of $\langle |L| \rangle$, $\langle L^2 \rangle$ for acentric reflections are 0.5, 0.333 respectively for untwinned datasets, and 0.375, 0.2 for perfectly twinned datasets.

5 Model quality [i](#)

5.1 Standard geometry [i](#)

Bond lengths and bond angles in the following residue types are not validated in this section: 5H, SO4

The Z score for a bond length (or angle) is the number of standard deviations the observed value is removed from the expected value. A bond length (or angle) with $|Z| > 5$ is considered an outlier worth inspection. RMSZ is the root-mean-square of all Z scores of the bond lengths (or angles).

Mol	Chain	Bond lengths		Bond angles	
		RMSZ	# Z >5	RMSZ	# Z >5
1	A	0.33	0/4431	0.57	1/6010 (0.0%)
1	B	0.32	0/4465	0.56	1/6057 (0.0%)
All	All	0.32	0/8896	0.56	2/12067 (0.0%)

There are no bond length outliers.

All (2) bond angle outliers are listed below:

Mol	Chain	Res	Type	Atoms	Z	Observed(°)	Ideal(°)
1	A	31	LEU	CA-CB-CG	5.89	128.84	115.30
1	B	56	ARG	NE-CZ-NH2	-5.17	117.72	120.30

There are no chirality outliers.

There are no planarity outliers.

5.2 Too-close contacts [i](#)

In the following table, the Non-H and H(model) columns list the number of non-hydrogen atoms and hydrogen atoms in the chain respectively. The H(added) column lists the number of hydrogen atoms added and optimized by MolProbity. The Clashes column lists the number of clashes within the asymmetric unit, whereas Symm-Clashes lists symmetry-related clashes.

Mol	Chain	Non-H	H(model)	H(added)	Clashes	Symm-Clashes
1	A	4337	0	4355	33	0
1	B	4370	0	4393	25	0
2	A	20	0	0	0	0
2	B	10	0	0	0	0
3	A	25	0	12	0	0
3	B	25	0	12	0	0
4	A	364	0	0	2	0

Continued on next page...

Continued from previous page...

Mol	Chain	Non-H	H(model)	H(added)	Clashes	Symm-Clashes
4	B	374	0	0	0	0
All	All	9525	0	8772	58	0

The all-atom clashscore is defined as the number of clashes found per 1000 atoms (including hydrogen atoms). The all-atom clashscore for this structure is 3.

The worst 5 of 58 close contacts within the same asymmetric unit are listed below, sorted by their clash magnitude.

Atom-1	Atom-2	Interatomic distance (Å)	Clash overlap (Å)
1:A:517:ARG:HH11	1:A:517:ARG:HG3	1.40	0.86
1:A:83:LEU:HB2	1:A:173:MET:HA	1.68	0.74
1:B:233:ILE:HD13	1:B:262:ILE:HA	1.69	0.73
1:B:83:LEU:HB2	1:B:173:MET:HA	1.72	0.70
1:B:336:LEU:HD22	1:B:356:PRO:HG3	1.75	0.69

There are no symmetry-related clashes.

5.3 Torsion angles [i](#)

5.3.1 Protein backbone [i](#)

In the following table, the Percentiles column shows the percent Ramachandran outliers of the chain as a percentile score with respect to all X-ray entries followed by that with respect to entries of similar resolution.

The Analysed column shows the number of residues for which the backbone conformation was analysed, and the total number of residues.

Mol	Chain	Analysed	Favoured	Allowed	Outliers	Percentiles	
1	A	553/580 (95%)	544 (98%)	9 (2%)	0	100	100
1	B	560/580 (97%)	551 (98%)	7 (1%)	2 (0%)	34	29
All	All	1113/1160 (96%)	1095 (98%)	16 (1%)	2 (0%)	47	46

All (2) Ramachandran outliers are listed below:

Mol	Chain	Res	Type
1	B	151	LYS
1	B	150	GLU

5.3.2 Protein sidechains [i](#)

In the following table, the Percentiles column shows the percent sidechain outliers of the chain as a percentile score with respect to all X-ray entries followed by that with respect to entries of similar resolution.

The Analysed column shows the number of residues for which the sidechain conformation was analysed, and the total number of residues.

Mol	Chain	Analysed	Rotameric	Outliers	Percentiles	
1	A	474/492 (96%)	470 (99%)	4 (1%)	81	86
1	B	476/492 (97%)	472 (99%)	4 (1%)	81	86
All	All	950/984 (96%)	942 (99%)	8 (1%)	81	86

5 of 8 residues with a non-rotameric sidechain are listed below:

Mol	Chain	Res	Type
1	B	498	ARG
1	B	366	CYS
1	B	56	ARG
1	A	517	ARG
1	B	150	GLU

Sometimes sidechains can be flipped to improve hydrogen bonding and reduce clashes. 5 of 14 such sidechains are listed below:

Mol	Chain	Res	Type
1	A	506	ASN
1	B	35	ASN
1	B	506	ASN
1	B	273	ASN
1	B	330	GLN

5.3.3 RNA [i](#)

There are no RNA molecules in this entry.

5.4 Non-standard residues in protein, DNA, RNA chains [i](#)

There are no non-standard protein/DNA/RNA residues in this entry.

5.5 Carbohydrates [i](#)

There are no monosaccharides in this entry.

5.6 Ligand geometry [i](#)

8 ligands are modelled in this entry.

In the following table, the Counts columns list the number of bonds (or angles) for which Mogul statistics could be retrieved, the number of bonds (or angles) that are observed in the model and the number of bonds (or angles) that are defined in the Chemical Component Dictionary. The Link column lists molecule types, if any, to which the group is linked. The Z score for a bond length (or angle) is the number of standard deviations the observed value is removed from the expected value. A bond length (or angle) with $|Z| > 2$ is considered an outlier worth inspection. RMSZ is the root-mean-square of all Z scores of the bond lengths (or angles).

Mol	Type	Chain	Res	Link	Bond lengths			Bond angles		
					Counts	RMSZ	# Z > 2	Counts	RMSZ	# Z > 2
3	5H	B	802	1	24,27,27	1.78	3 (12%)	32,39,39	1.16	2 (6%)
2	SO4	A	902	-	4,4,4	0.44	0	6,6,6	0.05	0
2	SO4	B	905	-	4,4,4	0.53	0	6,6,6	0.07	0
3	5H	A	801	1	24,27,27	1.69	3 (12%)	32,39,39	1.32	3 (9%)
2	SO4	B	906	-	4,4,4	0.54	0	6,6,6	0.05	0
2	SO4	A	901	-	4,4,4	0.50	0	6,6,6	0.05	0
2	SO4	A	903	-	4,4,4	0.49	0	6,6,6	0.06	0
2	SO4	A	904	-	4,4,4	0.51	0	6,6,6	0.05	0

In the following table, the Chirals column lists the number of chiral outliers, the number of chiral centers analysed, the number of these observed in the model and the number defined in the Chemical Component Dictionary. Similar counts are reported in the Torsion and Rings columns. '-' means no outliers of that kind were identified.

Mol	Type	Chain	Res	Link	Chirals	Torsions	Rings
3	5H	B	802	1	-	2/13/31/31	0/3/3/3
3	5H	A	801	1	-	3/13/31/31	0/3/3/3

The worst 5 of 6 bond length outliers are listed below:

Mol	Chain	Res	Type	Atoms	Z	Observed(Å)	Ideal(Å)
3	B	802	5H	S19-N22	4.38	1.75	1.65
3	A	801	5H	S19-N22	4.17	1.74	1.65
3	B	802	5H	C14-S1	-3.82	1.75	1.82
3	A	801	5H	C7-N1	-3.34	1.33	1.39
3	B	802	5H	C7-N1	-3.32	1.33	1.39

All (5) bond angle outliers are listed below:

Mol	Chain	Res	Type	Atoms	Z	Observed(°)	Ideal(°)
3	A	801	5H	C7-C14-S1	-4.49	102.38	106.06
3	A	801	5H	C7-N1-N22	4.18	126.63	122.74
3	B	802	5H	C7-N1-N22	3.57	126.06	122.74
3	B	802	5H	C7-C14-S1	-3.32	103.34	106.06
3	A	801	5H	O1-C7-N1	-2.03	121.30	123.60

There are no chirality outliers.

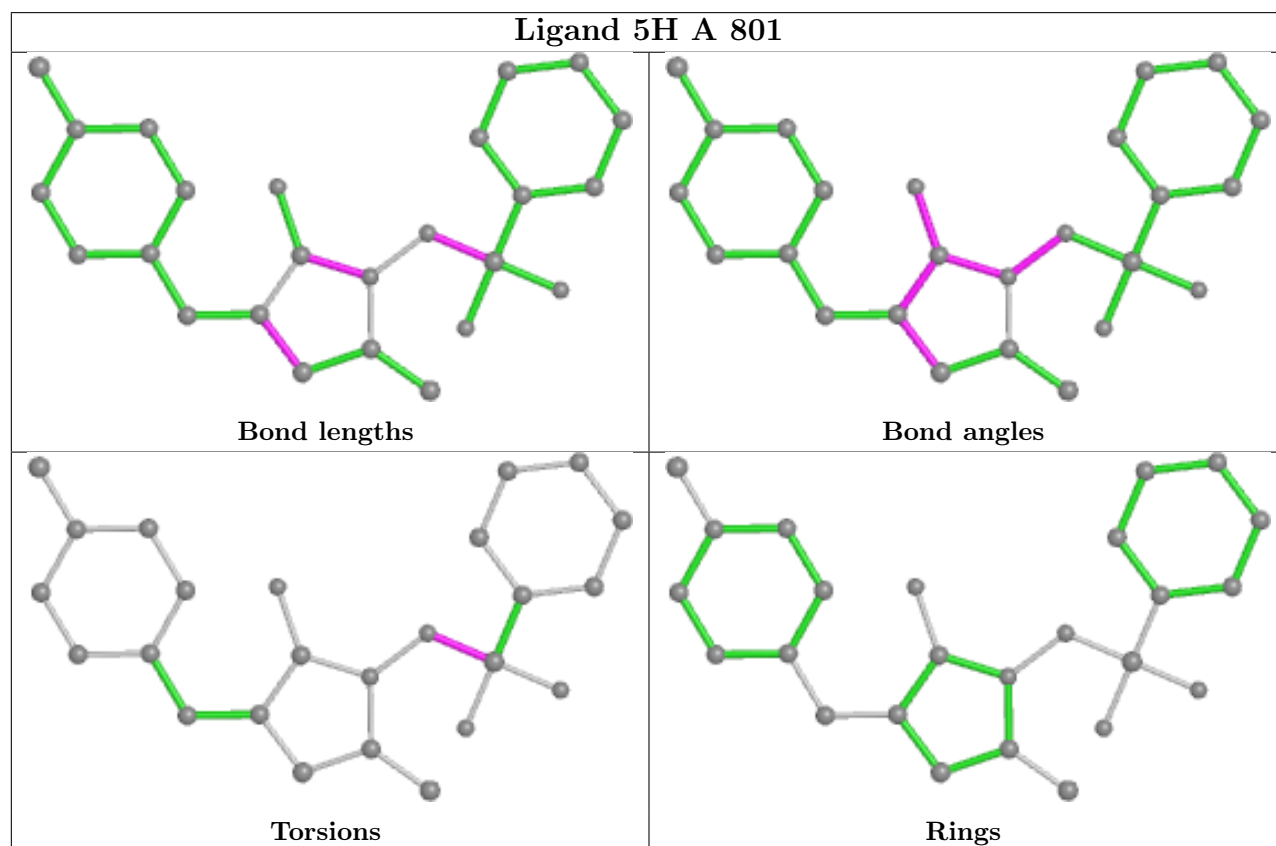
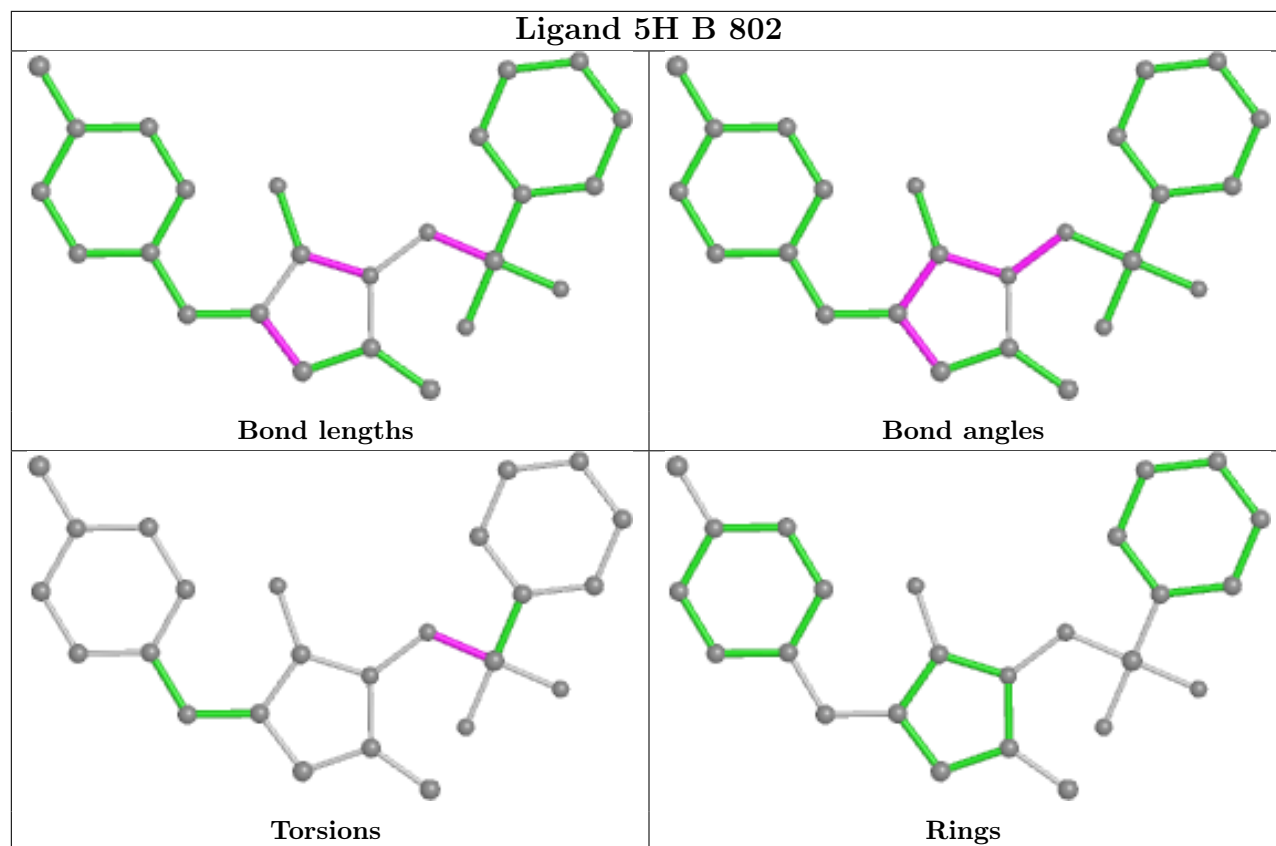
All (5) torsion outliers are listed below:

Mol	Chain	Res	Type	Atoms
3	A	801	5H	N1-N22-S19-O20
3	A	801	5H	N1-N22-S19-O21
3	B	802	5H	N1-N22-S19-O20
3	A	801	5H	N1-N22-S19-C24
3	B	802	5H	N1-N22-S19-C24

There are no ring outliers.

No monomer is involved in short contacts.

The following is a two-dimensional graphical depiction of Mogul quality analysis of bond lengths, bond angles, torsion angles, and ring geometry for all instances of the Ligand of Interest. In addition, ligands with molecular weight > 250 and outliers as shown on the validation Tables will also be included. For torsion angles, if less than 5% of the Mogul distribution of torsion angles is within 10 degrees of the torsion angle in question, then that torsion angle is considered an outlier. Any bond that is central to one or more torsion angles identified as an outlier by Mogul will be highlighted in the graph. For rings, the root-mean-square deviation (RMSD) between the ring in question and similar rings identified by Mogul is calculated over all ring torsion angles. If the average RMSD is greater than 60 degrees and the minimal RMSD between the ring in question and any Mogul-identified rings is also greater than 60 degrees, then that ring is considered an outlier. The outliers are highlighted in purple. The color gray indicates Mogul did not find sufficient equivalents in the CSD to analyse the geometry.



5.7 Other polymers [i](#)

There are no such residues in this entry.

5.8 Polymer linkage issues [i](#)

There are no chain breaks in this entry.

6 Fit of model and data [i](#)

6.1 Protein, DNA and RNA chains [i](#)

In the following table, the column labelled ‘#RSRZ > 2’ contains the number (and percentage) of RSRZ outliers, followed by percent RSRZ outliers for the chain as percentile scores relative to all X-ray entries and entries of similar resolution. The OWAB column contains the minimum, median, 95th percentile and maximum values of the occupancy-weighted average B-factor per residue. The column labelled ‘Q < 0.9’ lists the number of (and percentage) of residues with an average occupancy less than 0.9.

Mol	Chain	Analysed	<RSRZ>	#RSRZ>2	OWAB(Å ²)	Q<0.9
1	A	557/580 (96%)	0.18	28 (5%) 28 37	14, 25, 44, 64	0
1	B	562/580 (96%)	0.29	40 (7%) 16 22	12, 26, 45, 57	0
All	All	1119/1160 (96%)	0.23	68 (6%) 21 28	12, 26, 44, 64	0

The worst 5 of 68 RSRZ outliers are listed below:

Mol	Chain	Res	Type	RSRZ
1	B	149	PRO	5.7
1	B	425	LEU	4.8
1	B	421	ALA	4.7
1	B	402	HIS	4.6
1	A	546	ASP	4.6

6.2 Non-standard residues in protein, DNA, RNA chains [i](#)

There are no non-standard protein/DNA/RNA residues in this entry.

6.3 Carbohydrates [i](#)

There are no monosaccharides in this entry.

6.4 Ligands [i](#)

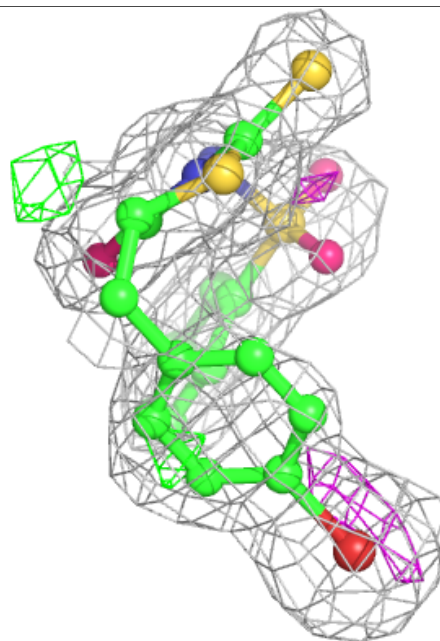
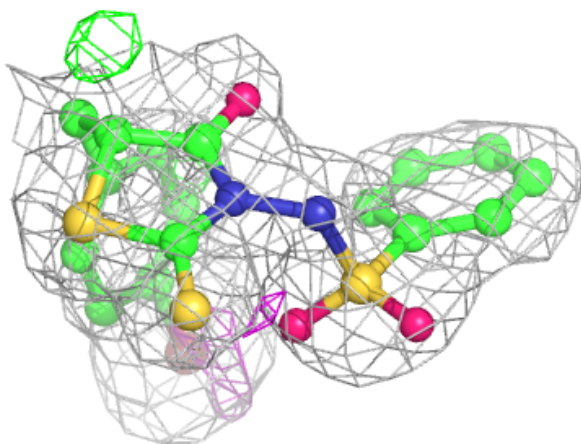
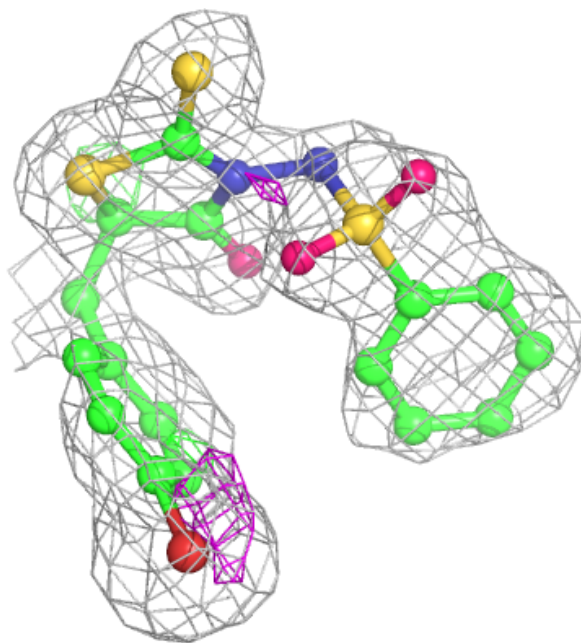
In the following table, the Atoms column lists the number of modelled atoms in the group and the number defined in the chemical component dictionary. The B-factors column lists the minimum, median, 95th percentile and maximum values of B factors of atoms in the group. The column labelled ‘Q < 0.9’ lists the number of atoms with occupancy less than 0.9.

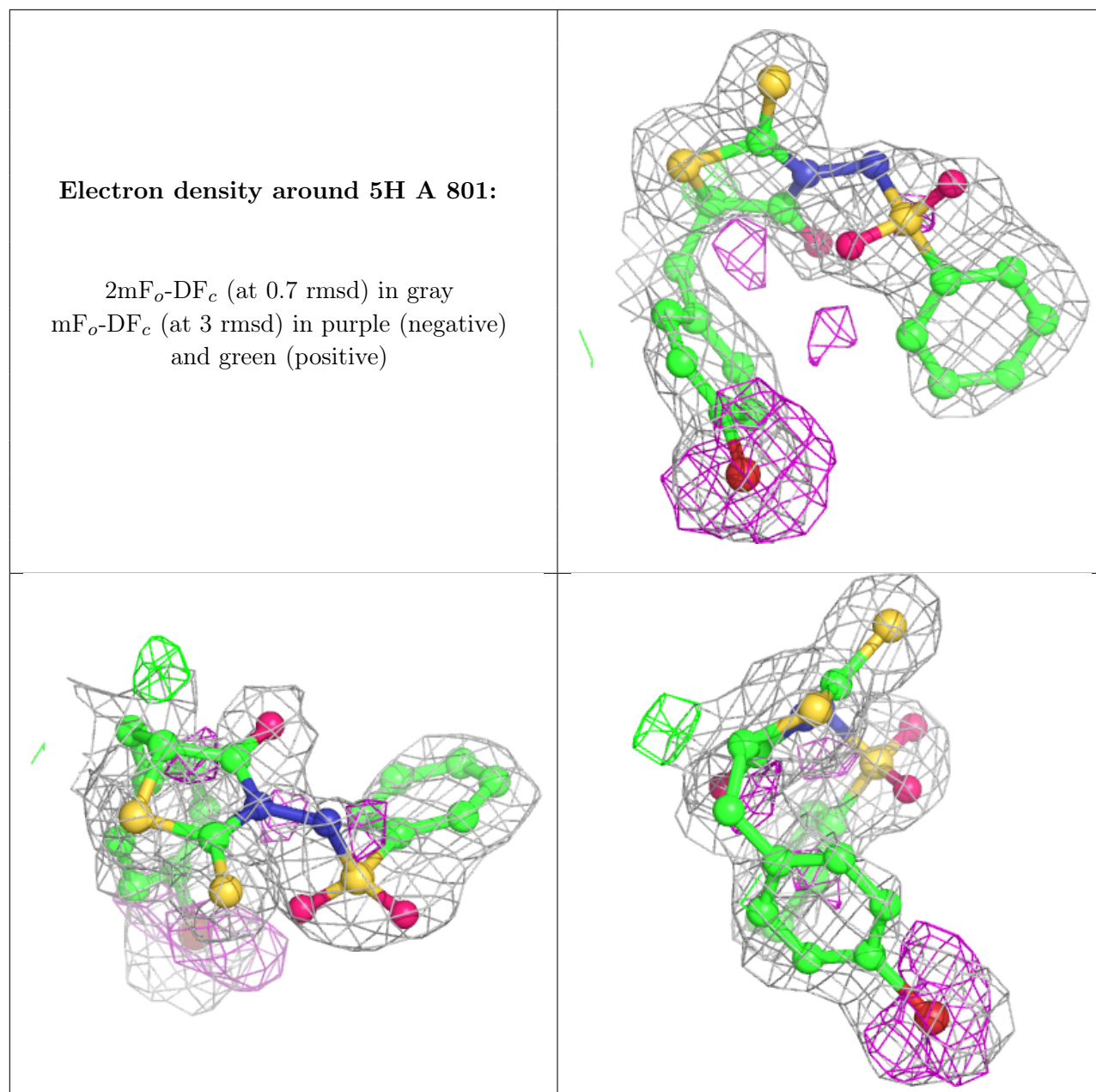
Mol	Type	Chain	Res	Atoms	RSCC	RSR	B-factors(\AA^2)	Q<0.9
3	5H	B	802	25/25	0.89	0.16	47,49,51,55	0
2	SO4	B	906	5/5	0.90	0.22	73,73,73,73	0
2	SO4	A	904	5/5	0.91	0.15	41,42,43,43	0
3	5H	A	801	25/25	0.92	0.17	46,51,52,56	0
2	SO4	A	903	5/5	0.94	0.20	48,48,49,49	0
2	SO4	A	902	5/5	0.97	0.07	40,40,41,42	0
2	SO4	B	905	5/5	0.98	0.14	32,33,33,34	0
2	SO4	A	901	5/5	0.98	0.08	30,30,31,31	0

The following is a graphical depiction of the model fit to experimental electron density of all instances of the Ligand of Interest. In addition, ligands with molecular weight > 250 and outliers as shown on the geometry validation Tables will also be included. Each fit is shown from different orientation to approximate a three-dimensional view.

Electron density around 5H B 802:

$2mF_o-DF_c$ (at 0.7 rmsd) in gray
 mF_o-DF_c (at 3 rmsd) in purple (negative)
and green (positive)





6.5 Other polymers [i](#)

There are no such residues in this entry.