



Full wwPDB X-ray Structure Validation Report ⓘ

Dec 17, 2023 – 05:01 am GMT

PDB ID : 4AWF
Title : Influenza strain pH1N1 2009 polymerase subunit PA endonuclease in complex with 2 4-dioxo-4-phenylbutanoic acid DPBA
Authors : Kowalinski, E.; Zubieta, C.; Wolkerstorfer, A.; Szolar, O.H.; Ruigrok, R.W.; Cusack, S.
Deposited on : 2012-06-03
Resolution : 2.30 Å(reported)

This is a Full wwPDB X-ray Structure Validation Report for a publicly released PDB entry.

We welcome your comments at validation@mail.wwpdb.org

A user guide is available at

<https://www.wwpdb.org/validation/2017/XrayValidationReportHelp>

with specific help available everywhere you see the ⓘ symbol.

The types of validation reports are described at

<http://www.wwpdb.org/validation/2017/FAQs#types>.

The following versions of software and data (see [references ⓘ](#)) were used in the production of this report:

MolProbity : 4.02b-467
Mogul : 1.8.4, CSD as541be (2020)
Xtriage (Phenix) : 1.13
EDS : 2.36
Percentile statistics : 20191225.v01 (using entries in the PDB archive December 25th 2019)
Refmac : 5.8.0158
CCP4 : 7.0.044 (Gargrove)
Ideal geometry (proteins) : Engh & Huber (2001)
Ideal geometry (DNA, RNA) : Parkinson et al. (1996)
Validation Pipeline (wwPDB-VP) : 2.36

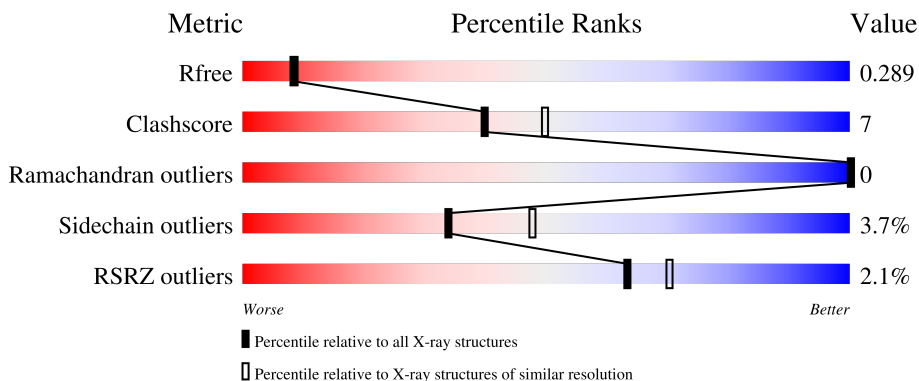
1 Overall quality at a glance i

The following experimental techniques were used to determine the structure:

X-RAY DIFFRACTION

The reported resolution of this entry is 2.30 Å.

Percentile scores (ranging between 0-100) for global validation metrics of the entry are shown in the following graphic. The table shows the number of entries on which the scores are based.



Metric	Whole archive (#Entries)	Similar resolution (#Entries, resolution range(Å))
R_{free}	130704	5042 (2.30-2.30)
Clashscore	141614	5643 (2.30-2.30)
Ramachandran outliers	138981	5575 (2.30-2.30)
Sidechain outliers	138945	5575 (2.30-2.30)
RSRZ outliers	127900	4938 (2.30-2.30)

The table below summarises the geometric issues observed across the polymeric chains and their fit to the electron density. The red, orange, yellow and green segments of the lower bar indicate the fraction of residues that contain outliers for ≥ 3 , 2, 1 and 0 types of geometric quality criteria respectively. A grey segment represents the fraction of residues that are not modelled. The numeric value for each fraction is indicated below the corresponding segment, with a dot representing fractions $\leq 5\%$. The upper red bar (where present) indicates the fraction of residues that have poor fit to the electron density. The numeric value is given above the bar.

Mol	Chain	Length	Quality of chain
1	A	204	 78% 14% • 6%
1	B	204	 2% 80% 13% 7%
1	C	204	 2% 75% 15% • 9%
1	D	204	 3% 74% 16% 9%

2 Entry composition i

There are 4 unique types of molecules in this entry. The entry contains 6552 atoms, of which 0 are hydrogens and 0 are deuteriums.

In the tables below, the ZeroOcc column contains the number of atoms modelled with zero occupancy, the AltConf column contains the number of residues with at least one atom in alternate conformation and the Trace column contains the number of residues modelled with at most 2 atoms.

- Molecule 1 is a protein called POLYMERASE PA.

Mol	Chain	Residues	Atoms					ZeroOcc	AltConf	Trace
			Total	C	N	O	S			
1	A	191	Total 1582	C 1007	N 270	O 293	S 12	0	0	0
1	B	190	Total 1572	C 1002	N 269	O 289	S 12	0	0	0
1	C	186	Total 1546	C 987	N 265	O 282	S 12	0	0	0
1	D	185	Total 1540	C 984	N 261	O 283	S 12	0	0	0

There are 24 discrepancies between the modelled and reference sequences:

Chain	Residue	Modelled	Actual	Comment	Reference
A	-5	MET	-	expression tag	UNP C3W5S0
A	-4	GLY	-	expression tag	UNP C3W5S0
A	-3	SER	-	expression tag	UNP C3W5S0
A	-2	GLY	-	expression tag	UNP C3W5S0
A	-1	MET	-	expression tag	UNP C3W5S0
A	0	ALA	-	expression tag	UNP C3W5S0
B	-5	MET	-	expression tag	UNP C3W5S0
B	-4	GLY	-	expression tag	UNP C3W5S0
B	-3	SER	-	expression tag	UNP C3W5S0
B	-2	GLY	-	expression tag	UNP C3W5S0
B	-1	MET	-	expression tag	UNP C3W5S0
B	0	ALA	-	expression tag	UNP C3W5S0
C	-5	MET	-	expression tag	UNP C3W5S0
C	-4	GLY	-	expression tag	UNP C3W5S0
C	-3	SER	-	expression tag	UNP C3W5S0
C	-2	GLY	-	expression tag	UNP C3W5S0
C	-1	MET	-	expression tag	UNP C3W5S0
C	0	ALA	-	expression tag	UNP C3W5S0
D	-5	MET	-	expression tag	UNP C3W5S0
D	-4	GLY	-	expression tag	UNP C3W5S0
D	-3	SER	-	expression tag	UNP C3W5S0

Continued on next page...

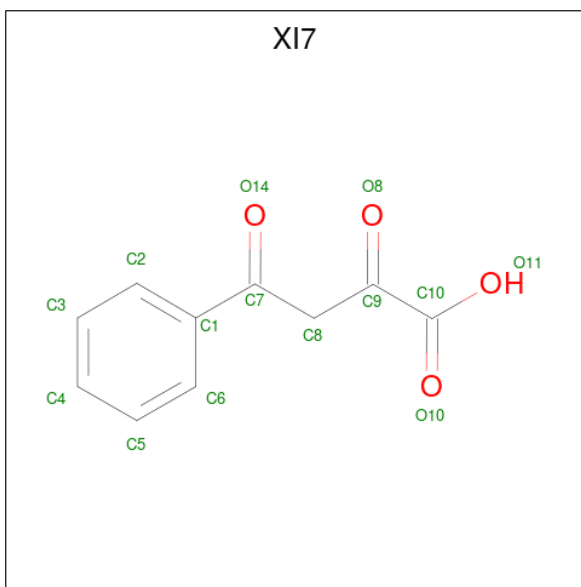
Continued from previous page...

Chain	Residue	Modelled	Actual	Comment	Reference
D	-2	GLY	-	expression tag	UNP C3W5S0
D	-1	MET	-	expression tag	UNP C3W5S0
D	0	ALA	-	expression tag	UNP C3W5S0

- Molecule 2 is MANGANESE (II) ION (three-letter code: MN) (formula: Mn).

Mol	Chain	Residues	Atoms		ZeroOcc	AltConf
2	A	2	Total	Mn	0	0
			2	2		
2	B	2	Total	Mn	0	0
			2	2		
2	C	2	Total	Mn	0	0
			2	2		
2	D	2	Total	Mn	0	0
			2	2		

- Molecule 3 is 2-4-DIOXO-4-PHENYLBUTANOIC ACID (three-letter code: XI7) (formula: C₁₀H₈O₄).



Mol	Chain	Residues	Atoms			ZeroOcc	AltConf
3	A	1	Total	C	O	0	0
			14	10	4		
3	B	1	Total	C	O	0	0
			14	10	4		
3	C	1	Total	C	O	0	0
			14	10	4		

Continued on next page...

Continued from previous page...

Mol	Chain	Residues	Atoms			ZeroOcc	AltConf
			Total	C	O		
3	D	1	14	10	4	0	0


- Molecule 4 is water.

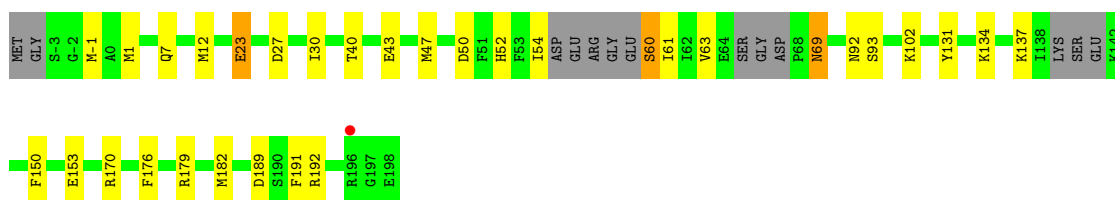
Mol	Chain	Residues	Atoms		ZeroOcc	AltConf
4	A	60	Total	O	0	0
			60	60		
4	B	74	Total	O	0	0
			74	74		
4	C	57	Total	O	0	0
			57	57		
4	D	57	Total	O	0	0
			57	57		

3 Residue-property plots


These plots are drawn for all protein, RNA, DNA and oligosaccharide chains in the entry. The first graphic for a chain summarises the proportions of the various outlier classes displayed in the second graphic. The second graphic shows the sequence view annotated by issues in geometry and electron density. Residues are color-coded according to the number of geometric quality criteria for which they contain at least one outlier: green = 0, yellow = 1, orange = 2 and red = 3 or more. A red dot above a residue indicates a poor fit to the electron density ($RSRZ > 2$). Stretches of 2 or more consecutive residues without any outlier are shown as a green connector. Residues present in the sample, but not in the model, are shown in grey.

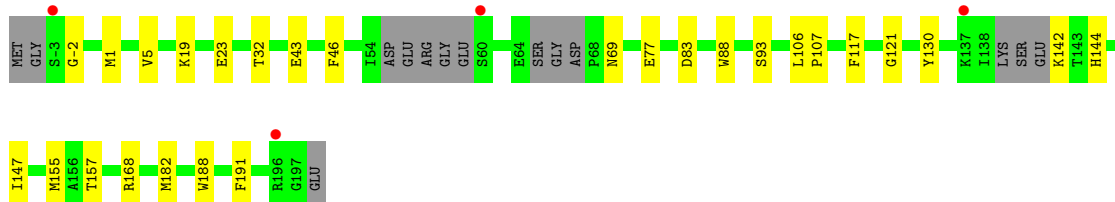
- Molecule 1: POLYMERASE PA

Chain A: 




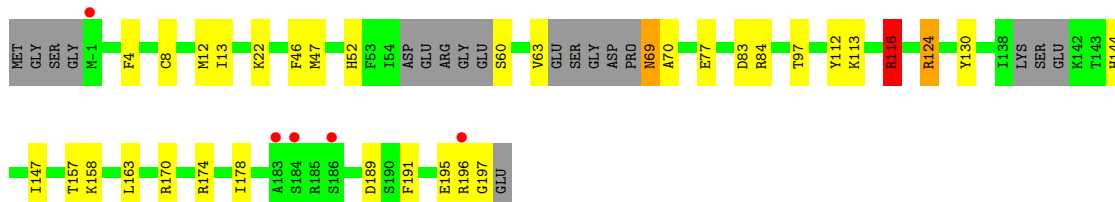
- Molecule 1: POLYMERASE PA

Chain B: 




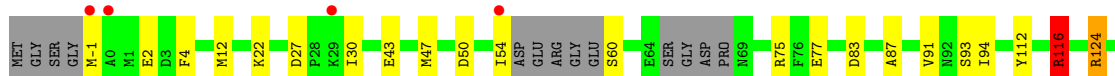
- Molecule 1: POLYMERASE PA

Chain C: 



- Molecule 1: POLYMERASE PA

Chain D: 





4 Data and refinement statistics

Property	Value	Source
Space group	C 1 2 1	Depositor
Cell constants a, b, c, α , β , γ	260.87Å 65.75Å 66.03Å 90.00° 95.76° 90.00°	Depositor
Resolution (Å)	46.32 – 2.30 46.32 – 2.30	Depositor EDS
% Data completeness (in resolution range)	97.3 (46.32-2.30) 97.4 (46.32-2.30)	Depositor EDS
R_{merge}	0.10	Depositor
R_{sym}	(Not available)	Depositor
$\langle I/\sigma(I) \rangle$ ¹	1.83 (at 2.29Å)	Xtrriage
Refinement program	REFMAC 5.6.0116	Depositor
R, R_{free}	0.224 , 0.289 0.224 , 0.289	Depositor DCC
R_{free} test set	1899 reflections (3.92%)	wwPDB-VP
Wilson B-factor (Å ²)	29.1	Xtrriage
Anisotropy	0.202	Xtrriage
Bulk solvent k_{sol} (e/Å ³), B_{sol} (Å ²)	0.37 , 48.6	EDS
L-test for twinning ²	$\langle L \rangle = 0.45$, $\langle L^2 \rangle = 0.27$	Xtrriage
Estimated twinning fraction	No twinning to report.	Xtrriage
F_o, F_c correlation	0.92	EDS
Total number of atoms	6552	wwPDB-VP
Average B, all atoms (Å ²)	28.0	wwPDB-VP

Xtrriage's analysis on translational NCS is as follows: *The largest off-origin peak in the Patterson function is 6.10% of the height of the origin peak. No significant pseudotranslation is detected.*

¹Intensities estimated from amplitudes.

²Theoretical values of $\langle |L| \rangle$, $\langle L^2 \rangle$ for acentric reflections are 0.5, 0.333 respectively for untwinned datasets, and 0.375, 0.2 for perfectly twinned datasets.

5 Model quality [i](#)

5.1 Standard geometry [i](#)

Bond lengths and bond angles in the following residue types are not validated in this section: MN, XI7

The Z score for a bond length (or angle) is the number of standard deviations the observed value is removed from the expected value. A bond length (or angle) with $|Z| > 5$ is considered an outlier worth inspection. RMSZ is the root-mean-square of all Z scores of the bond lengths (or angles).

Mol	Chain	Bond lengths		Bond angles	
		RMSZ	# Z >5	RMSZ	# Z >5
1	A	0.72	0/1613	0.78	0/2161
1	B	0.75	1/1603 (0.1%)	0.80	2/2149 (0.1%)
1	C	0.71	0/1575	0.85	2/2110 (0.1%)
1	D	0.71	0/1570	0.86	6/2106 (0.3%)
All	All	0.72	1/6361 (0.0%)	0.82	10/8526 (0.1%)

All (1) bond length outliers are listed below:

Mol	Chain	Res	Type	Atoms	Z	Observed(Å)	Ideal(Å)
1	B	188	TRP	CD2-CE2	5.08	1.47	1.41

All (10) bond angle outliers are listed below:

Mol	Chain	Res	Type	Atoms	Z	Observed(°)	Ideal(°)
1	D	124	ARG	NE-CZ-NH1	6.42	123.51	120.30
1	B	83	ASP	CB-CG-OD1	5.82	123.54	118.30
1	D	83	ASP	CB-CG-OD1	5.78	123.50	118.30
1	C	116	ARG	NE-CZ-NH1	5.76	123.18	120.30
1	B	168	ARG	NE-CZ-NH1	5.64	123.12	120.30
1	C	83	ASP	CB-CG-OD1	5.52	123.27	118.30
1	D	116	ARG	NE-CZ-NH2	-5.38	117.61	120.30
1	D	168	ARG	NE-CZ-NH2	-5.37	117.61	120.30
1	D	124	ARG	NE-CZ-NH2	-5.11	117.75	120.30
1	D	116	ARG	NE-CZ-NH1	5.07	122.83	120.30

There are no chirality outliers.

There are no planarity outliers.

5.2 Too-close contacts [i](#)

In the following table, the Non-H and H(model) columns list the number of non-hydrogen atoms and hydrogen atoms in the chain respectively. The H(added) column lists the number of hydrogen atoms added and optimized by MolProbity. The Clashes column lists the number of clashes within the asymmetric unit, whereas Symm-Clashes lists symmetry-related clashes.

Mol	Chain	Non-H	H(model)	H(added)	Clashes	Symm-Clashes
1	A	1582	0	1558	25	0
1	B	1572	0	1552	23	0
1	C	1546	0	1529	27	0
1	D	1540	0	1520	21	0
2	A	2	0	0	0	0
2	B	2	0	0	0	0
2	C	2	0	0	0	0
2	D	2	0	0	0	0
3	A	14	0	7	0	0
3	B	14	0	7	0	0
3	C	14	0	7	0	0
3	D	14	0	7	0	0
4	A	60	0	0	6	0
4	B	74	0	0	3	0
4	C	57	0	0	1	0
4	D	57	0	0	5	0
All	All	6552	0	6187	91	0

The all-atom clashscore is defined as the number of clashes found per 1000 atoms (including hydrogen atoms). The all-atom clashscore for this structure is 7.

All (91) close contacts within the same asymmetric unit are listed below, sorted by their clash magnitude.

Atom-1	Atom-2	Interatomic distance (Å)	Clash overlap (Å)
1:C:196:ARG:C	1:C:197:GLY:N	2.10	1.04
1:D:192:ARG:HG2	4:D:2055:HOH:O	1.82	0.78
1:A:7:GLN:HG3	4:A:2004:HOH:O	1.88	0.73
1:D:77:GLU:HG2	1:D:112:TYR:CE2	2.31	0.65
1:B:1:MET:CE	1:B:182:MET:HE1	2.28	0.64
1:A:189:ASP:OD1	1:A:192:ARG:NH2	2.31	0.63
1:A:-1:MET:HE3	4:A:2003:HOH:O	2.00	0.61
1:C:116:ARG:HD3	1:C:144:HIS:HB2	1.81	0.61
1:B:1:MET:HE3	1:B:182:MET:HE1	1.83	0.60
1:C:4:PHE:HZ	1:C:178:ILE:HG23	1.65	0.60
1:C:157:THR:HG22	1:C:158:LYS:HG3	1.83	0.60

Continued on next page...

Continued from previous page...

Atom-1	Atom-2	Interatomic distance (Å)	Clash overlap (Å)
1:A:61:ILE:HD12	1:A:63:VAL:HG23	1.83	0.59
1:B:1:MET:HE1	1:B:182:MET:CE	2.34	0.58
1:C:69:ASN:C	1:C:69:ASN:OD1	2.41	0.58
1:D:77:GLU:HG2	1:D:112:TYR:HE2	1.67	0.57
1:A:54:ILE:HA	1:A:60:SER:HA	1.87	0.55
1:D:188:TRP:HE1	1:D:192:ARG:CZ	2.19	0.55
1:B:121:GLY:HA3	1:B:147:ILE:HD13	1.87	0.55
1:A:50:ASP:O	1:A:52:HIS:CD2	2.59	0.55
1:B:144:HIS:CE1	1:B:157:THR:HB	2.42	0.55
1:A:182:MET:HE1	1:A:191:PHE:CB	2.38	0.53
1:A:54:ILE:HG22	4:A:2022:HOH:O	2.08	0.53
1:A:7:GLN:NE2	4:A:2004:HOH:O	2.18	0.52
1:B:69:ASN:ND2	1:C:12:MET:HG3	2.25	0.52
1:C:196:ARG:O	1:C:197:GLY:N	2.42	0.52
1:D:144:HIS:CE1	1:D:157:THR:HB	2.45	0.52
1:C:124:ARG:HG3	1:C:195:GLU:OE1	2.10	0.52
1:B:1:MET:O	1:B:5:VAL:HG23	2.09	0.51
1:C:13:ILE:HD11	1:C:46:PHE:CD2	2.45	0.51
1:D:190:SER:HA	4:D:2056:HOH:O	2.11	0.51
1:A:170:ARG:HD3	4:A:2052:HOH:O	2.11	0.51
1:A:27:ASP:HB3	1:A:30:ILE:HD12	1.92	0.51
1:A:43:GLU:O	1:A:47:MET:HG3	2.11	0.51
1:C:13:ILE:HD11	1:C:46:PHE:HD2	1.75	0.50
1:A:182:MET:HE1	1:A:191:PHE:HB2	1.93	0.49
1:C:174:ARG:NH2	4:C:2004:HOH:O	2.44	0.49
1:B:1:MET:HE1	1:B:182:MET:HE3	1.95	0.49
1:D:116:ARG:HD2	4:D:2037:HOH:O	2.12	0.49
1:B:107:PRO:HG2	1:B:117:PHE:CD1	2.48	0.48
1:A:40:THR:HG21	1:A:150:PHE:CZ	2.48	0.48
1:D:54:ILE:HG23	4:D:2020:HOH:O	2.12	0.48
1:D:124:ARG:HD2	1:D:191:PHE:CE2	2.49	0.47
1:A:-1:MET:HE1	1:C:8:CYS:SG	2.54	0.47
1:D:54:ILE:HD11	1:D:75:ARG:HG3	1.96	0.47
1:D:27:ASP:HB3	1:D:30:ILE:HD12	1.97	0.47
1:D:124:ARG:HG2	1:D:150:PHE:CE1	2.50	0.47
1:D:4:PHE:CE2	1:D:182:MET:CE	2.98	0.47
1:B:182:MET:HE1	1:B:191:PHE:HB2	1.97	0.46
1:C:77:GLU:HG2	1:C:112:TYR:CE2	2.50	0.46
1:A:182:MET:HE1	1:A:191:PHE:CG	2.51	0.46
1:D:-1:MET:HA	4:D:2001:HOH:O	2.15	0.46
1:B:46:PHE:CE1	1:C:70:ALA:HB3	2.52	0.45

Continued on next page...

Continued from previous page...

Atom-1	Atom-2	Interatomic distance (Å)	Clash overlap (Å)
1:C:124:ARG:HD3	1:C:191:PHE:CZ	2.51	0.45
1:B:1:MET:HE1	1:B:182:MET:HE1	1.96	0.45
1:C:60:SER:HB2	1:C:113:LYS:HD2	1.99	0.45
1:C:124:ARG:CD	1:C:191:PHE:CE2	3.00	0.45
1:C:124:ARG:HD3	1:C:191:PHE:CE2	2.51	0.45
1:D:4:PHE:CE2	1:D:182:MET:HE2	2.52	0.45
1:B:130:TYR:CD2	1:B:147:ILE:HD12	2.52	0.44
1:D:157:THR:HG22	1:D:158:LYS:HG3	1.98	0.44
1:A:27:ASP:CB	1:A:30:ILE:HD12	2.46	0.44
1:A:23:GLU:O	4:A:2012:HOH:O	2.21	0.44
1:B:182:MET:HE1	1:B:191:PHE:CB	2.48	0.44
1:D:87:ALA:O	1:D:91:VAL:HG23	2.18	0.43
1:A:69:ASN:OD1	1:A:69:ASN:C	2.56	0.43
1:D:77:GLU:HG3	1:D:94:ILE:HD11	2.00	0.43
1:B:77:GLU:OE2	4:B:2028:HOH:O	2.21	0.43
1:A:1:MET:HE3	1:A:182:MET:HE1	2.00	0.43
1:A:92:ASN:OD1	1:A:102:LYS:HE3	2.19	0.43
1:C:130:TYR:HD2	1:C:147:ILE:HD12	1.84	0.43
1:D:43:GLU:O	1:D:47:MET:HG3	2.18	0.43
1:B:88:TRP:CD2	1:B:106:LEU:HD21	2.53	0.43
1:B:93:SER:OG	1:C:97:THR:HG23	2.19	0.43
1:C:13:ILE:CD1	1:C:46:PHE:CE2	3.01	0.42
1:B:-2:GLY:O	1:B:32:THR:HG21	2.20	0.42
1:B:130:TYR:HD2	1:B:147:ILE:HD12	1.84	0.42
1:B:155:MET:HE2	4:B:2058:HOH:O	2.18	0.42
1:D:124:ARG:HD3	1:D:191:PHE:CZ	2.54	0.42
1:A:131:TYR:C	1:A:131:TYR:CD1	2.93	0.42
1:A:-1:MET:CE	1:C:8:CYS:SG	3.08	0.42
1:A:176:PHE:CE1	1:A:179:ARG:NH2	2.88	0.42
1:C:47:MET:CE	1:C:170:ARG:HG2	2.49	0.42
1:B:1:MET:CE	1:B:182:MET:CE	2.92	0.42
1:B:142:LYS:HB3	4:B:2057:HOH:O	2.20	0.41
1:C:52:HIS:CE1	1:C:163:LEU:HD22	2.55	0.41
1:D:116:ARG:HD3	1:D:144:HIS:HB2	2.03	0.41
1:C:84:ARG:HA	1:C:84:ARG:HD3	1.76	0.41
1:A:50:ASP:O	1:A:52:HIS:HD2	2.02	0.41
1:C:130:TYR:CD2	1:C:147:ILE:HD12	2.57	0.40
1:B:88:TRP:CE2	1:B:106:LEU:HD21	2.57	0.40
1:C:63:VAL:O	1:C:63:VAL:HG12	2.22	0.40

There are no symmetry-related clashes.

5.3 Torsion angles [i](#)

5.3.1 Protein backbone [i](#)

In the following table, the Percentiles column shows the percent Ramachandran outliers of the chain as a percentile score with respect to all X-ray entries followed by that with respect to entries of similar resolution.

The Analysed column shows the number of residues for which the backbone conformation was analysed, and the total number of residues.

Mol	Chain	Analysed	Favoured	Allowed	Outliers	Percentiles	
1	A	183/204 (90%)	180 (98%)	3 (2%)	0	100	100
1	B	182/204 (89%)	179 (98%)	3 (2%)	0	100	100
1	C	177/204 (87%)	169 (96%)	8 (4%)	0	100	100
1	D	177/204 (87%)	171 (97%)	6 (3%)	0	100	100
All	All	719/816 (88%)	699 (97%)	20 (3%)	0	100	100

There are no Ramachandran outliers to report.

5.3.2 Protein sidechains [i](#)

In the following table, the Percentiles column shows the percent sidechain outliers of the chain as a percentile score with respect to all X-ray entries followed by that with respect to entries of similar resolution.

The Analysed column shows the number of residues for which the sidechain conformation was analysed, and the total number of residues.

Mol	Chain	Analysed	Rotameric	Outliers	Percentiles	
1	A	172/182 (94%)	164 (95%)	8 (5%)	26	37
1	B	171/182 (94%)	168 (98%)	3 (2%)	59	75
1	C	168/182 (92%)	163 (97%)	5 (3%)	41	57
1	D	168/182 (92%)	159 (95%)	9 (5%)	22	30
All	All	679/728 (93%)	654 (96%)	25 (4%)	34	48

All (25) residues with a non-rotameric sidechain are listed below:

Mol	Chain	Res	Type
1	A	12	MET
1	A	23	GLU

Continued on next page...

Continued from previous page...

Mol	Chain	Res	Type
1	A	60	SER
1	A	69	ASN
1	A	93	SER
1	A	134	LYS
1	A	137	LYS
1	A	153	GLU
1	B	19	LYS
1	B	23	GLU
1	B	43	GLU
1	C	22	LYS
1	C	69	ASN
1	C	116	ARG
1	C	124	ARG
1	C	189	ASP
1	D	2	GLU
1	D	12	MET
1	D	22	LYS
1	D	50	ASP
1	D	60	SER
1	D	93	SER
1	D	116	ARG
1	D	134	LYS
1	D	189	ASP

Sometimes sidechains can be flipped to improve hydrogen bonding and reduce clashes. All (2) such sidechains are listed below:

Mol	Chain	Res	Type
1	A	33	ASN
1	C	52	HIS

5.3.3 RNA [i](#)

There are no RNA molecules in this entry.

5.4 Non-standard residues in protein, DNA, RNA chains [i](#)

There are no non-standard protein/DNA/RNA residues in this entry.

5.5 Carbohydrates [i](#)

There are no monosaccharides in this entry.

5.6 Ligand geometry [i](#)

Of 12 ligands modelled in this entry, 8 are monoatomic - leaving 4 for Mogul analysis.

In the following table, the Counts columns list the number of bonds (or angles) for which Mogul statistics could be retrieved, the number of bonds (or angles) that are observed in the model and the number of bonds (or angles) that are defined in the Chemical Component Dictionary. The Link column lists molecule types, if any, to which the group is linked. The Z score for a bond length (or angle) is the number of standard deviations the observed value is removed from the expected value. A bond length (or angle) with $|Z| > 2$ is considered an outlier worth inspection. RMSZ is the root-mean-square of all Z scores of the bond lengths (or angles).

Mol	Type	Chain	Res	Link	Bond lengths			Bond angles		
					Counts	RMSZ	# Z > 2	Counts	RMSZ	# Z > 2
3	XI7	C	303	2	14,14,14	1.65	1 (7%)	17,18,18	1.55	3 (17%)
3	XI7	B	303	2	14,14,14	1.65	1 (7%)	17,18,18	1.50	2 (11%)
3	XI7	A	303	2	14,14,14	1.94	2 (14%)	17,18,18	2.02	4 (23%)
3	XI7	D	303	2	14,14,14	1.54	1 (7%)	17,18,18	1.90	5 (29%)

In the following table, the Chirals column lists the number of chiral outliers, the number of chiral centers analysed, the number of these observed in the model and the number defined in the Chemical Component Dictionary. Similar counts are reported in the Torsion and Rings columns. '-' means no outliers of that kind were identified.

Mol	Type	Chain	Res	Link	Chirals	Torsions	Rings
3	XI7	C	303	2	-	4/12/12/12	0/1/1/1
3	XI7	B	303	2	-	0/12/12/12	0/1/1/1
3	XI7	A	303	2	-	2/12/12/12	0/1/1/1
3	XI7	D	303	2	-	4/12/12/12	0/1/1/1

All (5) bond length outliers are listed below:

Mol	Chain	Res	Type	Atoms	Z	Observed(Å)	Ideal(Å)
3	A	303	XI7	C9-C10	-6.50	1.44	1.53
3	C	303	XI7	C9-C10	-5.57	1.46	1.53
3	B	303	XI7	C9-C10	-5.36	1.46	1.53
3	D	303	XI7	C9-C10	-4.93	1.47	1.53
3	A	303	XI7	O8-C9	-2.25	1.18	1.23

All (14) bond angle outliers are listed below:

Mol	Chain	Res	Type	Atoms	Z	Observed(°)	Ideal(°)
3	A	303	XI7	O8-C9-C8	5.28	128.22	120.58
3	D	303	XI7	O10-C10-C9	-4.22	116.09	121.72
3	C	303	XI7	O8-C9-C8	3.88	126.19	120.58
3	D	303	XI7	O8-C9-C8	3.83	126.12	120.58
3	B	303	XI7	O8-C9-C8	3.76	126.01	120.58
3	A	303	XI7	O10-C10-C9	-3.63	116.87	121.72
3	C	303	XI7	O14-C7-C8	3.30	124.28	120.56
3	A	303	XI7	O8-C9-C10	-3.27	114.69	119.43
3	A	303	XI7	O14-C7-C8	3.17	124.13	120.56
3	B	303	XI7	O10-C10-C9	-3.06	117.64	121.72
3	D	303	XI7	O14-C7-C8	2.66	123.56	120.56
3	D	303	XI7	O11-C10-C9	2.57	121.00	113.97
3	C	303	XI7	C8-C9-C10	-2.33	113.92	117.85
3	D	303	XI7	O14-C7-C1	-2.05	117.84	120.74

There are no chirality outliers.

All (10) torsion outliers are listed below:

Mol	Chain	Res	Type	Atoms
3	C	303	XI7	C2-C1-C7-O14
3	D	303	XI7	C2-C1-C7-C8
3	C	303	XI7	C2-C1-C7-C8
3	C	303	XI7	C6-C1-C7-O14
3	D	303	XI7	C2-C1-C7-O14
3	C	303	XI7	C6-C1-C7-C8
3	D	303	XI7	C6-C1-C7-C8
3	A	303	XI7	C2-C1-C7-C8
3	A	303	XI7	C2-C1-C7-O14
3	D	303	XI7	C6-C1-C7-O14

There are no ring outliers.

No monomer is involved in short contacts.

5.7 Other polymers

There are no such residues in this entry.

5.8 Polymer linkage issues

The following chains have linkage breaks:

Mol	Chain	Number of breaks
1	C	1

All chain breaks are listed below:

Model	Chain	Residue-1	Atom-1	Residue-2	Atom-2	Distance (Å)
1	C	196:ARG	C	197:GLY	N	2.10

6 Fit of model and data [i](#)

6.1 Protein, DNA and RNA chains [i](#)

In the following table, the column labelled ‘#RSRZ > 2’ contains the number (and percentage) of RSRZ outliers, followed by percent RSRZ outliers for the chain as percentile scores relative to all X-ray entries and entries of similar resolution. The OWAB column contains the minimum, median, 95th percentile and maximum values of the occupancy-weighted average B-factor per residue. The column labelled ‘Q < 0.9’ lists the number of (and percentage) of residues with an average occupancy less than 0.9.

Mol	Chain	Analysed	<RSRZ>	#RSRZ>2	OWAB(Å ²)	Q<0.9
1	A	191/204 (93%)	0.40	1 (0%) 91 94	14, 26, 44, 57	0
1	B	190/204 (93%)	0.48	4 (2%) 63 70	14, 26, 41, 65	0
1	C	186/204 (91%)	0.58	5 (2%) 54 62	15, 27, 44, 65	0
1	D	185/204 (90%)	0.61	6 (3%) 47 54	15, 27, 43, 59	0
All	All	752/816 (92%)	0.52	16 (2%) 63 70	14, 26, 44, 65	0

All (16) RSRZ outliers are listed below:

Mol	Chain	Res	Type	RSRZ
1	C	196	ARG	4.7
1	D	-1	MET	4.4
1	C	-1	MET	3.4
1	D	0	ALA	3.3
1	B	60	SER	2.9
1	D	186	SER	2.9
1	D	54	ILE	2.8
1	B	196	ARG	2.8
1	C	183	ALA	2.6
1	C	186	SER	2.6
1	D	29	LYS	2.4
1	B	-3	SER	2.3
1	C	184	SER	2.2
1	B	137	LYS	2.2
1	D	194	SER	2.2
1	A	196	ARG	2.2

6.2 Non-standard residues in protein, DNA, RNA chains [i](#)

There are no non-standard protein/DNA/RNA residues in this entry.

6.3 Carbohydrates [i](#)

There are no monosaccharides in this entry.

6.4 Ligands [i](#)

In the following table, the Atoms column lists the number of modelled atoms in the group and the number defined in the chemical component dictionary. The B-factors column lists the minimum, median, 95th percentile and maximum values of B factors of atoms in the group. The column labelled 'Q< 0.9' lists the number of atoms with occupancy less than 0.9.

Mol	Type	Chain	Res	Atoms	RSCC	RSR	B-factors(Å ²)	Q<0.9
3	XI7	C	303	14/14	0.92	0.17	20,25,32,33	0
3	XI7	D	303	14/14	0.94	0.14	20,23,29,30	0
3	XI7	B	303	14/14	0.95	0.16	15,22,28,28	0
3	XI7	A	303	14/14	0.96	0.19	17,24,30,31	0
2	MN	C	301	1/1	0.98	0.10	28,28,28,28	0
2	MN	C	302	1/1	0.99	0.12	17,17,17,17	0
2	MN	D	301	1/1	0.99	0.09	27,27,27,27	0
2	MN	D	302	1/1	0.99	0.12	19,19,19,19	0
2	MN	A	302	1/1	0.99	0.13	18,18,18,18	0
2	MN	B	301	1/1	0.99	0.09	31,31,31,31	0
2	MN	B	302	1/1	0.99	0.15	17,17,17,17	0
2	MN	A	301	1/1	0.99	0.08	26,26,26,26	0

6.5 Other polymers [i](#)

There are no such residues in this entry.