



Full wwPDB X-ray Structure Validation Report ⓘ

Dec 19, 2023 – 10:46 PM EST

PDB ID : 3B0N
Title : Q448K mutant of assimilatory nitrite reductase (Nii3) from tobacco leaf
Authors : Nakano, S.; Takahashi, M.; Sakamoto, A.; Morikawa, H.; Katayanagi, K.
Deposited on : 2011-06-10
Resolution : 2.00 Å(reported)

This is a Full wwPDB X-ray Structure Validation Report for a publicly released PDB entry.

We welcome your comments at validation@mail.wwpdb.org

A user guide is available at

<https://www.wwpdb.org/validation/2017/XrayValidationReportHelp>

with specific help available everywhere you see the ⓘ symbol.

The types of validation reports are described at

<http://www.wwpdb.org/validation/2017/FAQs#types>.

The following versions of software and data (see [references ⓘ](#)) were used in the production of this report:

MolProbity : 4.02b-467
Mogul : 1.8.5 (274361), CSD as541be (2020)
Xtriage (Phenix) : 1.13
EDS : 2.36
buster-report : 1.1.7 (2018)
Percentile statistics : 20191225.v01 (using entries in the PDB archive December 25th 2019)
Refmac : 5.8.0158
CCP4 : 7.0.044 (Gargrove)
Ideal geometry (proteins) : Engh & Huber (2001)
Ideal geometry (DNA, RNA) : Parkinson et al. (1996)
Validation Pipeline (wwPDB-VP) : 2.36

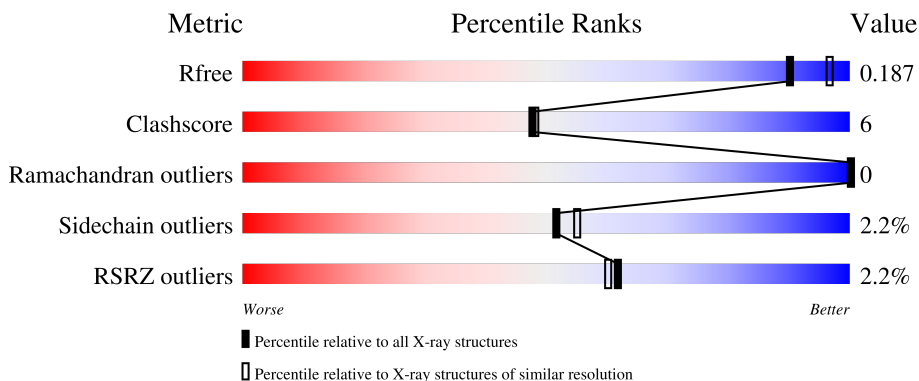
1 Overall quality at a glance

The following experimental techniques were used to determine the structure:

X-RAY DIFFRACTION

The reported resolution of this entry is 2.00 Å.

Percentile scores (ranging between 0-100) for global validation metrics of the entry are shown in the following graphic. The table shows the number of entries on which the scores are based.



Metric	Whole archive (#Entries)	Similar resolution (#Entries, resolution range(Å))
R_{free}	130704	8085 (2.00-2.00)
Clashscore	141614	9178 (2.00-2.00)
Ramachandran outliers	138981	9054 (2.00-2.00)
Sidechain outliers	138945	9053 (2.00-2.00)
RSRZ outliers	127900	7900 (2.00-2.00)

The table below summarises the geometric issues observed across the polymeric chains and their fit to the electron density. The red, orange, yellow and green segments of the lower bar indicate the fraction of residues that contain outliers for ≥ 3 , 2, 1 and 0 types of geometric quality criteria respectively. A grey segment represents the fraction of residues that are not modelled. The numeric value for each fraction is indicated below the corresponding segment, with a dot representing fractions $\leq 5\%$. The upper red bar (where present) indicates the fraction of residues that have poor fit to the electron density. The numeric value is given above the bar.

Mol	Chain	Length	Quality of chain
1	A	584	

The following table lists non-polymeric compounds, carbohydrate monomers and non-standard residues in protein, DNA, RNA chains that are outliers for geometric or electron-density-fit criteria:

Mol	Type	Chain	Res	Chirality	Geometry	Clashes	Electron density
2	SRM	A	601[A]	X	-	-	-

Continued on next page...

Continued from previous page...

Mol	Type	Chain	Res	Chirality	Geometry	Clashes	Electron density
2	SRM	A	601[B]	X	-	-	-

2 Entry composition [i](#)

There are 6 unique types of molecules in this entry. The entry contains 4941 atoms, of which 0 are hydrogens and 0 are deuteriums.

In the tables below, the ZeroOcc column contains the number of atoms modelled with zero occupancy, the AltConf column contains the number of residues with at least one atom in alternate conformation and the Trace column contains the number of residues modelled with at most 2 atoms.

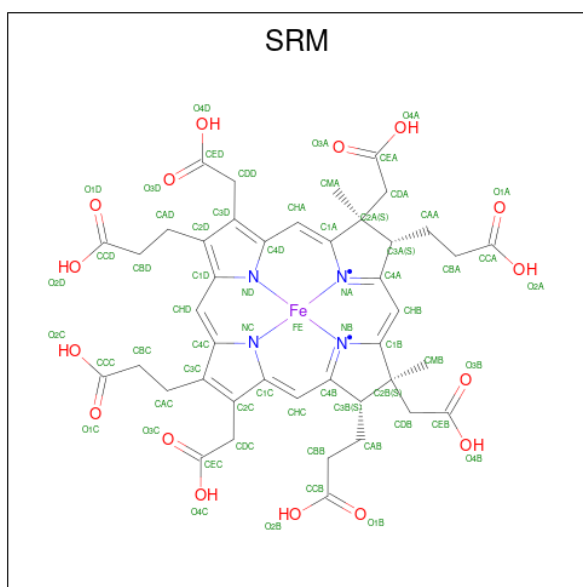
- Molecule 1 is a protein called Nitrite reductase.

Mol	Chain	Residues	Atoms					ZeroOcc	AltConf	Trace
			Total	C	N	O	S			
1	A	538	4254	2686	754	790	24	0	4	0

There are 24 discrepancies between the modelled and reference sequences:

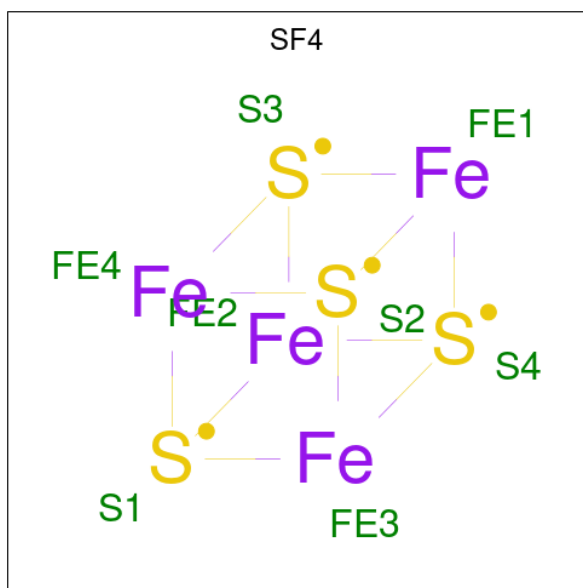
Chain	Residue	Modelled	Actual	Comment	Reference
A	-28	MET	-	expression tag	UNP Q76KB0
A	-27	GLY	-	expression tag	UNP Q76KB0
A	-26	HIS	-	expression tag	UNP Q76KB0
A	-25	HIS	-	expression tag	UNP Q76KB0
A	-24	HIS	-	expression tag	UNP Q76KB0
A	-23	HIS	-	expression tag	UNP Q76KB0
A	-22	HIS	-	expression tag	UNP Q76KB0
A	-21	HIS	-	expression tag	UNP Q76KB0
A	-20	HIS	-	expression tag	UNP Q76KB0
A	-19	HIS	-	expression tag	UNP Q76KB0
A	-18	HIS	-	expression tag	UNP Q76KB0
A	-17	HIS	-	expression tag	UNP Q76KB0
A	-16	SER	-	expression tag	UNP Q76KB0
A	-15	SER	-	expression tag	UNP Q76KB0
A	-14	GLY	-	expression tag	UNP Q76KB0
A	-13	HIS	-	expression tag	UNP Q76KB0
A	-12	ILE	-	expression tag	UNP Q76KB0
A	-11	GLU	-	expression tag	UNP Q76KB0
A	-10	GLY	-	expression tag	UNP Q76KB0
A	-9	ARG	-	expression tag	UNP Q76KB0
A	-8	HIS	-	expression tag	UNP Q76KB0
A	-7	MET	-	expression tag	UNP Q76KB0
A	290	ARG	LYS	conflict	UNP Q76KB0
A	448	LYS	GLN	engineered mutation	UNP Q76KB0

- Molecule 2 is SIROHEME (three-letter code: SRM) (formula: C₄₂H₄₄FeN₄O₁₆).



Mol	Chain	Residues	Atoms				ZeroOcc	AltConf	
			Total	C	Fe	N			O
2	A	1	65	42	1	4	18	0	1

- Molecule 3 is IRON/SULFUR CLUSTER (three-letter code: SF4) (formula: Fe₄S₄).



Mol	Chain	Residues	Atoms		ZeroOcc	AltConf	
			Total	Fe			S
3	A	1	8	4	4	0	0

- Molecule 4 is POTASSIUM ION (three-letter code: K) (formula: K).

Mol	Chain	Residues	Atoms	ZeroOcc	AltConf
4	A	1	Total K 1 1	0	0

- Molecule 5 is CHLORIDE ION (three-letter code: CL) (formula: Cl).

Mol	Chain	Residues	Atoms	ZeroOcc	AltConf
5	A	2	Total Cl 2 2	0	0

- Molecule 6 is water.

Mol	Chain	Residues	Atoms	ZeroOcc	AltConf
6	A	611	Total O 611 611	0	0

4 Data and refinement statistics

Property	Value	Source
Space group	P 4 21 2	Depositor
Cell constants a, b, c, α , β , γ	133.46Å 133.46Å 77.66Å 90.00° 90.00° 90.00°	Depositor
Resolution (Å)	30.66 – 2.00 30.65 – 2.00	Depositor EDS
% Data completeness (in resolution range)	100.0 (30.66-2.00) 99.8 (30.65-2.00)	Depositor EDS
R_{merge}	0.09	Depositor
R_{sym}	0.09	Depositor
$\langle I/\sigma(I) \rangle$ ¹	7.11 (at 2.00Å)	Xtrriage
Refinement program	REFMAC	Depositor
R, R_{free}	0.154 , 0.186 0.156 , 0.187	Depositor DCC
R_{free} test set	2426 reflections (5.06%)	wwPDB-VP
Wilson B-factor (Å ²)	23.4	Xtrriage
Anisotropy	0.018	Xtrriage
Bulk solvent k_{sol} (e/Å ³), B_{sol} (Å ²)	0.35 , 54.4	EDS
L-test for twinning ²	$\langle L \rangle = 0.48$, $\langle L^2 \rangle = 0.31$	Xtrriage
Estimated twinning fraction	No twinning to report.	Xtrriage
F_o, F_c correlation	0.96	EDS
Total number of atoms	4941	wwPDB-VP
Average B, all atoms (Å ²)	26.0	wwPDB-VP

Xtrriage's analysis on translational NCS is as follows: *The largest off-origin peak in the Patterson function is 3.66% of the height of the origin peak. No significant pseudotranslation is detected.*

¹Intensities estimated from amplitudes.

²Theoretical values of $\langle |L| \rangle$, $\langle L^2 \rangle$ for acentric reflections are 0.5, 0.333 respectively for untwinned datasets, and 0.375, 0.2 for perfectly twinned datasets.

5 Model quality [i](#)

5.1 Standard geometry [i](#)

Bond lengths and bond angles in the following residue types are not validated in this section: SRM, K, CL, SF4

The Z score for a bond length (or angle) is the number of standard deviations the observed value is removed from the expected value. A bond length (or angle) with $|Z| > 5$ is considered an outlier worth inspection. RMSZ is the root-mean-square of all Z scores of the bond lengths (or angles).

Mol	Chain	Bond lengths		Bond angles	
		RMSZ	# Z >5	RMSZ	# Z >5
1	A	0.67	0/4359	0.66	0/5896

There are no bond length outliers.

There are no bond angle outliers.

There are no chirality outliers.

There are no planarity outliers.

5.2 Too-close contacts [i](#)

In the following table, the Non-H and H(model) columns list the number of non-hydrogen atoms and hydrogen atoms in the chain respectively. The H(added) column lists the number of hydrogen atoms added and optimized by MolProbity. The Clashes column lists the number of clashes within the asymmetric unit, whereas Symm-Clashes lists symmetry-related clashes.

Mol	Chain	Non-H	H(model)	H(added)	Clashes	Symm-Clashes
1	A	4254	0	4288	53	0
2	A	65	0	0	0	0
3	A	8	0	0	0	0
4	A	1	0	0	0	0
5	A	2	0	0	0	0
6	A	611	0	0	13	6
All	All	4941	0	4288	53	6

The all-atom clashscore is defined as the number of clashes found per 1000 atoms (including hydrogen atoms). The all-atom clashscore for this structure is 6.

All (53) close contacts within the same asymmetric unit are listed below, sorted by their clash magnitude.

Atom-1	Atom-2	Interatomic distance (Å)	Clash overlap (Å)
1:A:55:GLU:OE1	6:A:1185:HOH:O	1.81	0.97
1:A:97:HIS:HE1	1:A:104:GLY:H	1.14	0.92
1:A:359:GLN:HE22	1:A:408:ASN:H	1.16	0.90
1:A:233:HIS:HD2	1:A:345:GLN:H	1.21	0.82
1:A:117[A]:THR:HG21	1:A:146:TRP:HE1	1.46	0.81
1:A:359:GLN:NE2	1:A:408:ASN:H	1.81	0.78
1:A:233:HIS:CD2	1:A:345:GLN:H	2.03	0.76
1:A:341:GLU:O	6:A:1132:HOH:O	2.07	0.71
1:A:489:GLN:HE21	1:A:489:GLN:H	1.41	0.69
1:A:315:ASP:OD2	6:A:1359:HOH:O	2.09	0.68
1:A:477:HIS:HD2	1:A:486:ALA:O	1.78	0.67
1:A:117[A]:THR:HG21	1:A:146:TRP:NE1	2.10	0.66
1:A:359:GLN:HE22	1:A:408:ASN:N	1.94	0.62
1:A:38:GLU:H	1:A:38:GLU:CD	2.02	0.62
1:A:503:LYS:N	1:A:503:LYS:HD2	2.16	0.61
1:A:503:LYS:HD2	1:A:503:LYS:H	1.66	0.60
1:A:172:GLN:HE22	1:A:215:ASN:H	1.51	0.59
1:A:369:LEU:HD12	1:A:404[A]:ILE:HD11	1.84	0.59
1:A:370:HIS:HD2	6:A:1019:HOH:O	1.86	0.59
1:A:250:THR:HG22	6:A:1203:HOH:O	2.03	0.57
1:A:489:GLN:H	1:A:489:GLN:NE2	2.02	0.56
1:A:503:LYS:H	1:A:503:LYS:HZ2	1.54	0.56
1:A:238:HIS:HD2	6:A:1034:HOH:O	1.88	0.54
1:A:240:HIS:HE1	6:A:1025:HOH:O	1.90	0.53
1:A:87:ASP:OD2	1:A:97:HIS:HD2	1.91	0.52
1:A:477:HIS:CD2	1:A:486:ALA:O	2.60	0.52
1:A:238:HIS:HE1	6:A:1006:HOH:O	1.93	0.51
1:A:100:LYS:HE3	1:A:101:ASN:HD21	1.76	0.51
1:A:161:LYS:NZ	6:A:1378:HOH:O	2.44	0.50
1:A:97:HIS:CE1	1:A:104:GLY:H	2.07	0.50
1:A:73:ILE:HD13	1:A:104:GLY:HA2	1.93	0.49
1:A:359:GLN:HE21	1:A:366:PHE:HB3	1.76	0.49
1:A:33:TYR:CD1	1:A:55:GLU:HG2	2.47	0.49
1:A:112:LEU:HD11	1:A:117[A]:THR:HG23	1.95	0.49
1:A:33:TYR:CG	1:A:55:GLU:HG2	2.50	0.47
1:A:477:HIS:HE1	6:A:1007:HOH:O	1.96	0.47
1:A:100:LYS:HE3	1:A:101:ASN:ND2	2.30	0.47
1:A:69:ALA:HA	1:A:153:LEU:HG	1.98	0.46
1:A:186:LEU:HB3	1:A:190:ASP:HB2	1.97	0.46
1:A:331:PRO:C	1:A:333:GLN:H	2.19	0.45
1:A:503:LYS:H	1:A:503:LYS:CD	2.29	0.45
1:A:503:LYS:H	1:A:503:LYS:NZ	2.15	0.44

Continued on next page...

Continued from previous page...

Atom-1	Atom-2	Interatomic distance (Å)	Clash overlap (Å)
1:A:45:ASN:ND2	1:A:48:GLU:H	2.15	0.44
1:A:370:HIS:HE1	6:A:1042:HOH:O	1.99	0.44
1:A:27:VAL:HG21	1:A:297:ARG:HG2	2.00	0.43
1:A:190:ASP:OD1	6:A:1155:HOH:O	2.21	0.43
1:A:459:LYS:HE2	6:A:1508:HOH:O	2.18	0.43
1:A:370:HIS:HB2	1:A:430:PRO:HG3	2.01	0.42
1:A:45:ASN:HD22	1:A:47:GLN:H	1.68	0.42
1:A:90:LEU:HD23	1:A:90:LEU:HA	1.91	0.42
1:A:117[B]:THR:HG22	1:A:121:GLN:HB2	2.02	0.42
1:A:172:GLN:NE2	1:A:215:ASN:H	2.18	0.41
1:A:117[B]:THR:HG22	1:A:118:THR:H	1.87	0.40

All (6) symmetry-related close contacts are listed below. The label for Atom-2 includes the symmetry operator and encoded unit-cell translations to be applied.

Atom-1	Atom-2	Interatomic distance (Å)	Clash overlap (Å)
6:A:1126:HOH:O	6:A:1308:HOH:O[7_554]	1.83	0.37
6:A:1311:HOH:O	6:A:1336:HOH:O[4_445]	1.98	0.22
6:A:1184:HOH:O	6:A:1604:HOH:O[7_555]	2.07	0.13
6:A:1312:HOH:O	6:A:1588:HOH:O[7_554]	2.07	0.13
6:A:1388:HOH:O	6:A:1569:HOH:O[7_555]	2.13	0.07
6:A:1184:HOH:O	6:A:1315:HOH:O[7_555]	2.18	0.02

5.3 Torsion angles [i](#)

5.3.1 Protein backbone [i](#)

In the following table, the Percentiles column shows the percent Ramachandran outliers of the chain as a percentile score with respect to all X-ray entries followed by that with respect to entries of similar resolution.

The Analysed column shows the number of residues for which the backbone conformation was analysed, and the total number of residues.

Mol	Chain	Analysed	Favoured	Allowed	Outliers	Percentiles
1	A	540/584 (92%)	528 (98%)	12 (2%)	0	100 100

There are no Ramachandran outliers to report.

5.3.2 Protein sidechains [i](#)

In the following table, the Percentiles column shows the percent sidechain outliers of the chain as a percentile score with respect to all X-ray entries followed by that with respect to entries of similar resolution.

The Analysed column shows the number of residues for which the sidechain conformation was analysed, and the total number of residues.

Mol	Chain	Analysed	Rotameric	Outliers	Percentiles
1	A	467/500 (93%)	456 (98%)	11 (2%)	49 51

All (11) residues with a non-rotameric sidechain are listed below:

Mol	Chain	Res	Type
1	A	45	ASN
1	A	74	GLU
1	A	79	SER
1	A	114	ASN
1	A	117[A]	THR
1	A	117[B]	THR
1	A	334	GLN
1	A	341	GLU
1	A	479	THR
1	A	489	GLN
1	A	503	LYS

Sometimes sidechains can be flipped to improve hydrogen bonding and reduce clashes. All (15) such sidechains are listed below:

Mol	Chain	Res	Type
1	A	45	ASN
1	A	97	HIS
1	A	101	ASN
1	A	172	GLN
1	A	177	ASN
1	A	202	ASN
1	A	233	HIS
1	A	238	HIS
1	A	240	HIS
1	A	359	GLN
1	A	370	HIS
1	A	377	GLN
1	A	467	GLN
1	A	477	HIS

Continued on next page...

Continued from previous page...

Mol	Chain	Res	Type
1	A	489	GLN

5.3.3 RNA [i](#)

There are no RNA molecules in this entry.

5.4 Non-standard residues in protein, DNA, RNA chains [i](#)

There are no non-standard protein/DNA/RNA residues in this entry.

5.5 Carbohydrates [i](#)

There are no monosaccharides in this entry.

5.6 Ligand geometry [i](#)

Of 6 ligands modelled in this entry, 3 are monoatomic - leaving 3 for Mogul analysis.

In the following table, the Counts columns list the number of bonds (or angles) for which Mogul statistics could be retrieved, the number of bonds (or angles) that are observed in the model and the number of bonds (or angles) that are defined in the Chemical Component Dictionary. The Link column lists molecule types, if any, to which the group is linked. The Z score for a bond length (or angle) is the number of standard deviations the observed value is removed from the expected value. A bond length (or angle) with $|Z| > 2$ is considered an outlier worth inspection. RMSZ is the root-mean-square of all Z scores of the bond lengths (or angles).

Mol	Type	Chain	Res	Link	Bond lengths			Bond angles		
					Counts	RMSZ	# $ Z > 2$	Counts	RMSZ	# $ Z > 2$
2	SRM	A	601[A]	-	68,70,70	1.51	9 (13%)	81,112,112	1.94	20 (24%)
2	SRM	A	601[B]	-	68,70,70	1.51	9 (13%)	81,112,112	1.86	18 (22%)
3	SF4	A	602	1	0,12,12	-	-	-		

In the following table, the Chirals column lists the number of chiral outliers, the number of chiral centers analysed, the number of these observed in the model and the number defined in the Chemical Component Dictionary. Similar counts are reported in the Torsion and Rings columns. '-' means no outliers of that kind were identified.

Mol	Type	Chain	Res	Link	Chirals	Torsions	Rings
2	SRM	A	601[A]	-	1/1/19/23	16/38/126/126	-

Continued on next page...

Continued from previous page...

Mol	Type	Chain	Res	Link	Chirals	Torsions	Rings
2	SRM	A	601[B]	-	1/1/19/23	15/38/126/126	-
3	SF4	A	602	1	-	-	0/6/5/5

All (18) bond length outliers are listed below:

Mol	Chain	Res	Type	Atoms	Z	Observed(Å)	Ideal(Å)
2	A	601[A]	SRM	C3C-C2C	5.79	1.49	1.36
2	A	601[B]	SRM	C3C-C2C	5.79	1.49	1.36
2	A	601[A]	SRM	FE-NC	3.80	2.10	1.95
2	A	601[B]	SRM	FE-NC	3.80	2.10	1.95
2	A	601[A]	SRM	C3D-C2D	3.55	1.47	1.39
2	A	601[B]	SRM	C3D-C2D	3.55	1.47	1.39
2	A	601[A]	SRM	CHD-C4C	2.91	1.39	1.35
2	A	601[B]	SRM	CHD-C4C	2.91	1.39	1.35
2	A	601[A]	SRM	C4C-C3C	2.36	1.49	1.45
2	A	601[B]	SRM	C4C-C3C	2.36	1.49	1.45
2	A	601[A]	SRM	CHA-C1A	2.33	1.39	1.35
2	A	601[B]	SRM	CHA-C1A	2.33	1.39	1.35
2	A	601[A]	SRM	C4A-NA	2.30	1.37	1.35
2	A	601[B]	SRM	C4A-NA	2.30	1.37	1.35
2	A	601[A]	SRM	C1C-NC	-2.11	1.35	1.39
2	A	601[B]	SRM	C1C-NC	-2.11	1.35	1.39
2	A	601[A]	SRM	O2C-CCC	-2.04	1.23	1.30
2	A	601[B]	SRM	O2C-CCC	-2.04	1.23	1.30

All (38) bond angle outliers are listed below:

Mol	Chain	Res	Type	Atoms	Z	Observed(°)	Ideal(°)
2	A	601[A]	SRM	CAA-C3A-C4A	5.25	120.45	111.19
2	A	601[B]	SRM	CAA-C3A-C4A	5.25	120.45	111.19
2	A	601[A]	SRM	C4C-NC-C1C	4.95	110.19	105.35
2	A	601[B]	SRM	C4C-NC-C1C	4.95	110.19	105.35
2	A	601[A]	SRM	C2A-C1A-CHA	4.81	127.93	123.54
2	A	601[B]	SRM	C2A-C1A-CHA	4.81	127.93	123.54
2	A	601[A]	SRM	C4B-NB-C1B	4.62	110.46	105.23
2	A	601[B]	SRM	C4B-NB-C1B	4.62	110.46	105.23
2	A	601[A]	SRM	C3D-CDD-CED	-4.47	108.86	114.21
2	A	601[B]	SRM	C3D-CDD-CED	-4.47	108.86	114.21
2	A	601[A]	SRM	O4A-CEA-O3A	-4.17	112.92	123.30
2	A	601[A]	SRM	C1A-NA-C4A	3.76	109.50	105.23
2	A	601[B]	SRM	C1A-NA-C4A	3.76	109.50	105.23
2	A	601[A]	SRM	C2B-C1B-CHB	3.43	126.67	123.54

Continued on next page...

Continued from previous page...

Mol	Chain	Res	Type	Atoms	Z	Observed(°)	Ideal(°)
2	A	601[B]	SRM	C2B-C1B-CHB	3.43	126.67	123.54
2	A	601[A]	SRM	CBD-CAD-C2D	-3.09	107.36	112.62
2	A	601[B]	SRM	CBD-CAD-C2D	-3.09	107.36	112.62
2	A	601[A]	SRM	C4D-CHA-C1A	-2.97	124.23	130.12
2	A	601[B]	SRM	C4D-CHA-C1A	-2.97	124.23	130.12
2	A	601[A]	SRM	CMA-C2A-CDA	2.94	115.65	110.80
2	A	601[B]	SRM	CMA-C2A-CDA	2.94	115.65	110.80
2	A	601[A]	SRM	C1C-C2C-C3C	-2.74	103.69	106.86
2	A	601[B]	SRM	C1C-C2C-C3C	-2.74	103.69	106.86
2	A	601[A]	SRM	CBB-CAB-C3B	-2.67	107.03	114.73
2	A	601[B]	SRM	CBB-CAB-C3B	-2.67	107.03	114.73
2	A	601[A]	SRM	CAB-C3B-C4B	2.46	115.52	111.19
2	A	601[B]	SRM	CAB-C3B-C4B	2.46	115.52	111.19
2	A	601[A]	SRM	O2C-CCC-O1C	-2.30	117.56	123.30
2	A	601[B]	SRM	O2C-CCC-O1C	-2.30	117.56	123.30
2	A	601[A]	SRM	O3A-CEA-CDA	-2.28	116.27	122.94
2	A	601[A]	SRM	O4D-CED-O3D	-2.23	117.75	123.30
2	A	601[B]	SRM	O4D-CED-O3D	-2.23	117.75	123.30
2	A	601[A]	SRM	C4C-C3C-C2C	-2.15	104.37	106.86
2	A	601[B]	SRM	C4C-C3C-C2C	-2.15	104.37	106.86
2	A	601[A]	SRM	O2D-CCD-CBD	2.15	120.93	114.03
2	A	601[B]	SRM	O2D-CCD-CBD	2.15	120.93	114.03
2	A	601[A]	SRM	O2A-CCA-CBA	2.07	120.69	114.03
2	A	601[B]	SRM	O2A-CCA-CBA	2.07	120.69	114.03

All (2) chirality outliers are listed below:

Mol	Chain	Res	Type	Atom
2	A	601[A]	SRM	NC
2	A	601[B]	SRM	NC

All (31) torsion outliers are listed below:

Mol	Chain	Res	Type	Atoms
2	A	601[A]	SRM	C2A-C3A-CAA-CBA
2	A	601[B]	SRM	C2A-C3A-CAA-CBA
2	A	601[A]	SRM	C4A-C3A-CAA-CBA
2	A	601[B]	SRM	C4A-C3A-CAA-CBA
2	A	601[A]	SRM	C2A-CDA-CEA-O4A
2	A	601[A]	SRM	C1A-C2A-CDA-CEA
2	A	601[B]	SRM	C1A-C2A-CDA-CEA
2	A	601[A]	SRM	C3A-C2A-CDA-CEA

Continued on next page...

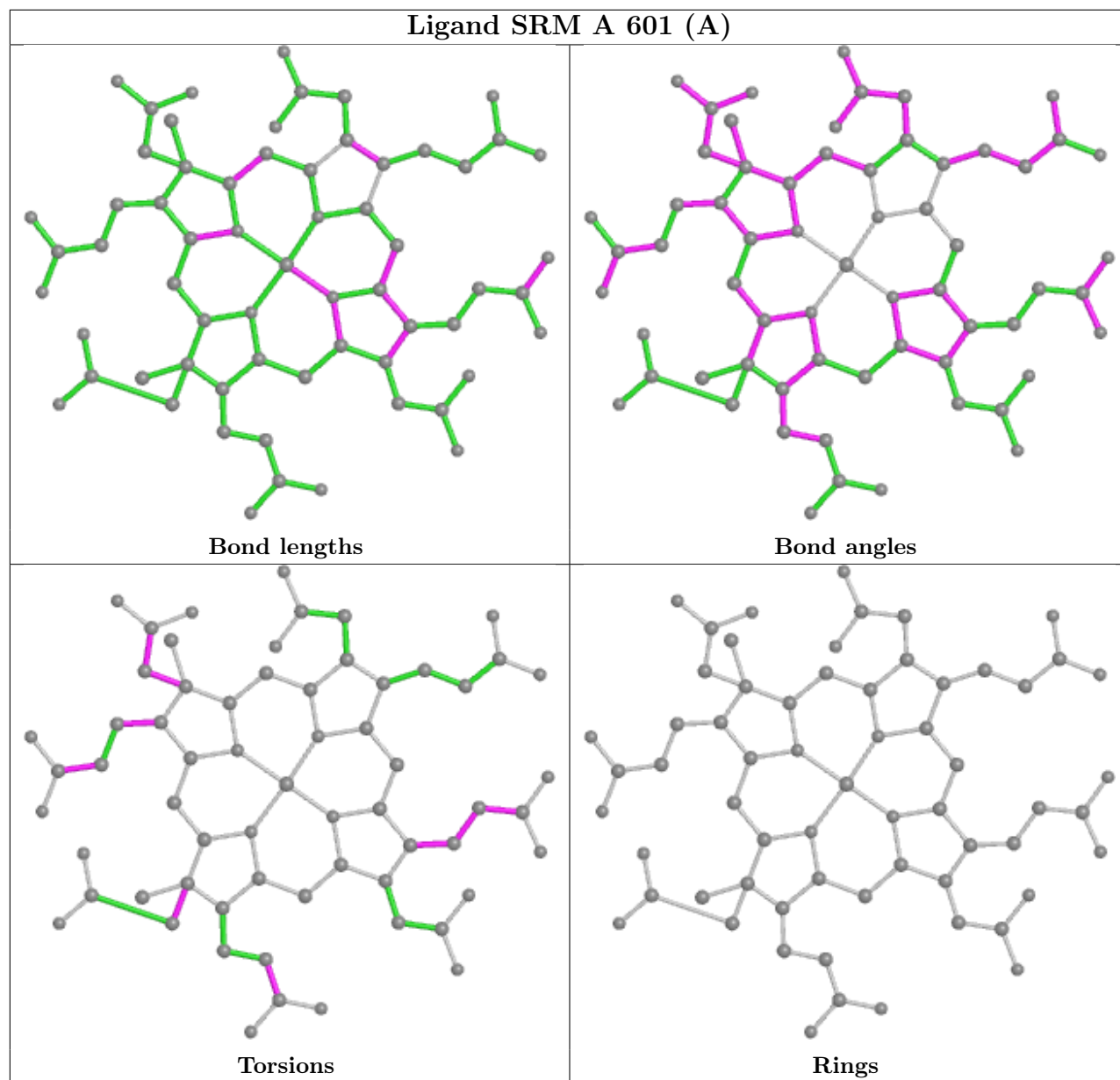
Continued from previous page...

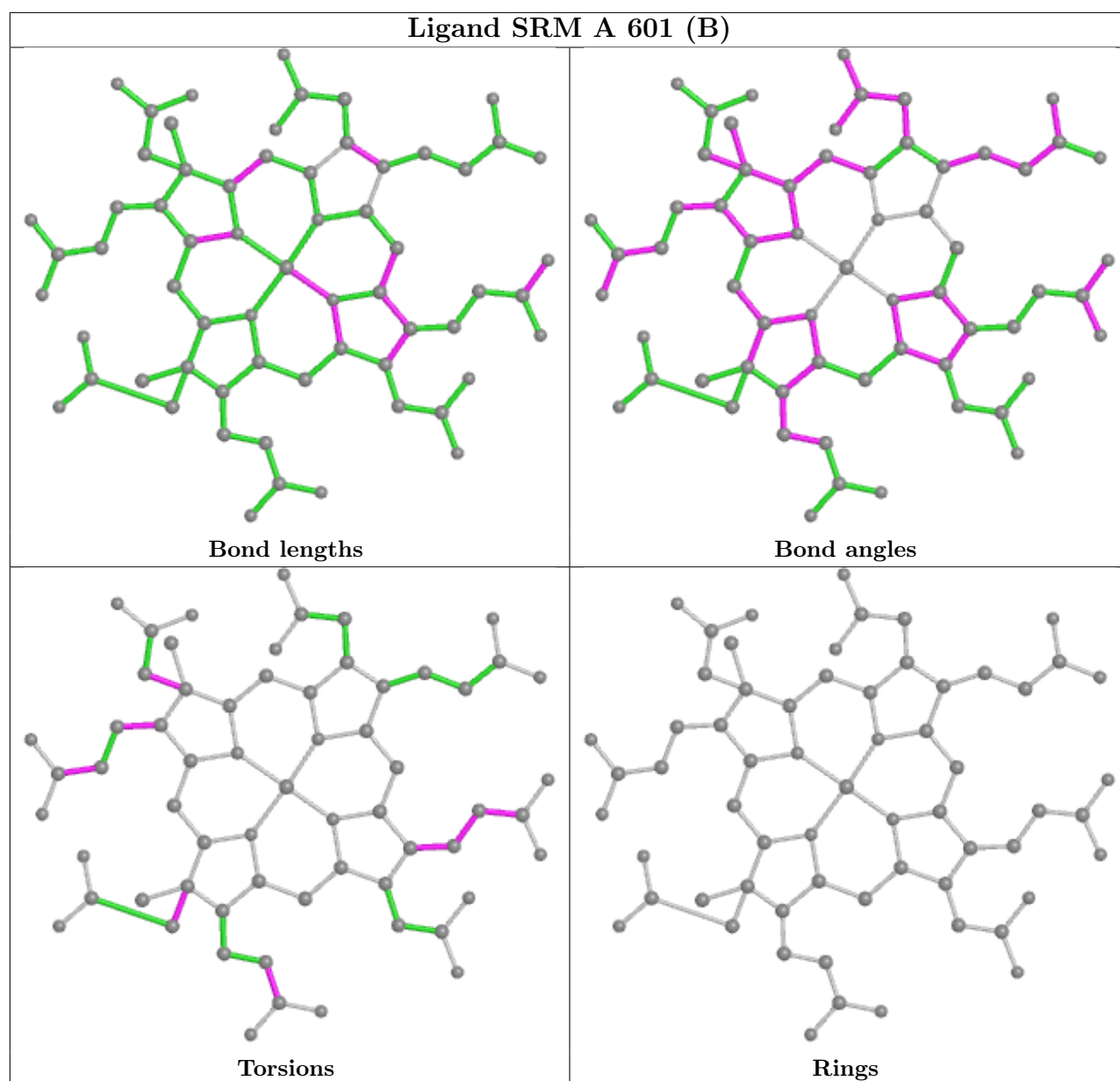
Mol	Chain	Res	Type	Atoms
2	A	601[B]	SRM	C3A-C2A-CDA-CEA
2	A	601[A]	SRM	C3B-C2B-CDB-CEB
2	A	601[B]	SRM	C3B-C2B-CDB-CEB
2	A	601[A]	SRM	C2C-C3C-CAC-CBC
2	A	601[B]	SRM	C2C-C3C-CAC-CBC
2	A	601[A]	SRM	C3C-CAC-CBC-CCC
2	A	601[B]	SRM	C3C-CAC-CBC-CCC
2	A	601[A]	SRM	CAB-CBB-CCB-O2B
2	A	601[B]	SRM	CAB-CBB-CCB-O2B
2	A	601[A]	SRM	CAB-CBB-CCB-O1B
2	A	601[B]	SRM	CAB-CBB-CCB-O1B
2	A	601[A]	SRM	C4C-C3C-CAC-CBC
2	A	601[B]	SRM	C4C-C3C-CAC-CBC
2	A	601[A]	SRM	CMA-C2A-CDA-CEA
2	A	601[B]	SRM	CMA-C2A-CDA-CEA
2	A	601[A]	SRM	CAA-CBA-CCA-O1A
2	A	601[B]	SRM	CAA-CBA-CCA-O1A
2	A	601[A]	SRM	CAA-CBA-CCA-O2A
2	A	601[B]	SRM	CAA-CBA-CCA-O2A
2	A	601[A]	SRM	CAC-CBC-CCC-O2C
2	A	601[B]	SRM	CAC-CBC-CCC-O2C
2	A	601[A]	SRM	CAC-CBC-CCC-O1C
2	A	601[B]	SRM	CAC-CBC-CCC-O1C

There are no ring outliers.

No monomer is involved in short contacts.

The following is a two-dimensional graphical depiction of Mogul quality analysis of bond lengths, bond angles, torsion angles, and ring geometry for all instances of the Ligand of Interest. In addition, ligands with molecular weight > 250 and outliers as shown on the validation Tables will also be included. For torsion angles, if less than 5% of the Mogul distribution of torsion angles is within 10 degrees of the torsion angle in question, then that torsion angle is considered an outlier. Any bond that is central to one or more torsion angles identified as an outlier by Mogul will be highlighted in the graph. For rings, the root-mean-square deviation (RMSD) between the ring in question and similar rings identified by Mogul is calculated over all ring torsion angles. If the average RMSD is greater than 60 degrees and the minimal RMSD between the ring in question and any Mogul-identified rings is also greater than 60 degrees, then that ring is considered an outlier. The outliers are highlighted in purple. The color gray indicates Mogul did not find sufficient equivalents in the CSD to analyse the geometry.





5.7 Other polymers [\(i\)](#)

There are no such residues in this entry.

5.8 Polymer linkage issues [\(i\)](#)

There are no chain breaks in this entry.

6 Fit of model and data [i](#)

6.1 Protein, DNA and RNA chains [i](#)

In the following table, the column labelled ‘#RSRZ> 2’ contains the number (and percentage) of RSRZ outliers, followed by percent RSRZ outliers for the chain as percentile scores relative to all X-ray entries and entries of similar resolution. The OWAB column contains the minimum, median, 95th percentile and maximum values of the occupancy-weighted average B-factor per residue. The column labelled ‘Q< 0.9’ lists the number of (and percentage) of residues with an average occupancy less than 0.9.

Mol	Chain	Analysed	<RSRZ>	#RSRZ>2	OWAB(Å ²)	Q<0.9
1	A	538/584 (92%)	-0.47	12 (2%) 62 60	14, 22, 38, 55	0

All (12) RSRZ outliers are listed below:

Mol	Chain	Res	Type	RSRZ
1	A	18	VAL	6.6
1	A	31	ASP	2.8
1	A	504	ASN	2.8
1	A	503	LYS	2.7
1	A	74	GLU	2.7
1	A	334	GLN	2.6
1	A	78	GLN	2.6
1	A	38	GLU	2.5
1	A	341	GLU	2.3
1	A	19	ALA	2.3
1	A	35	ILE	2.3
1	A	20	ALA	2.1

6.2 Non-standard residues in protein, DNA, RNA chains [i](#)

There are no non-standard protein/DNA/RNA residues in this entry.

6.3 Carbohydrates [i](#)

There are no monosaccharides in this entry.

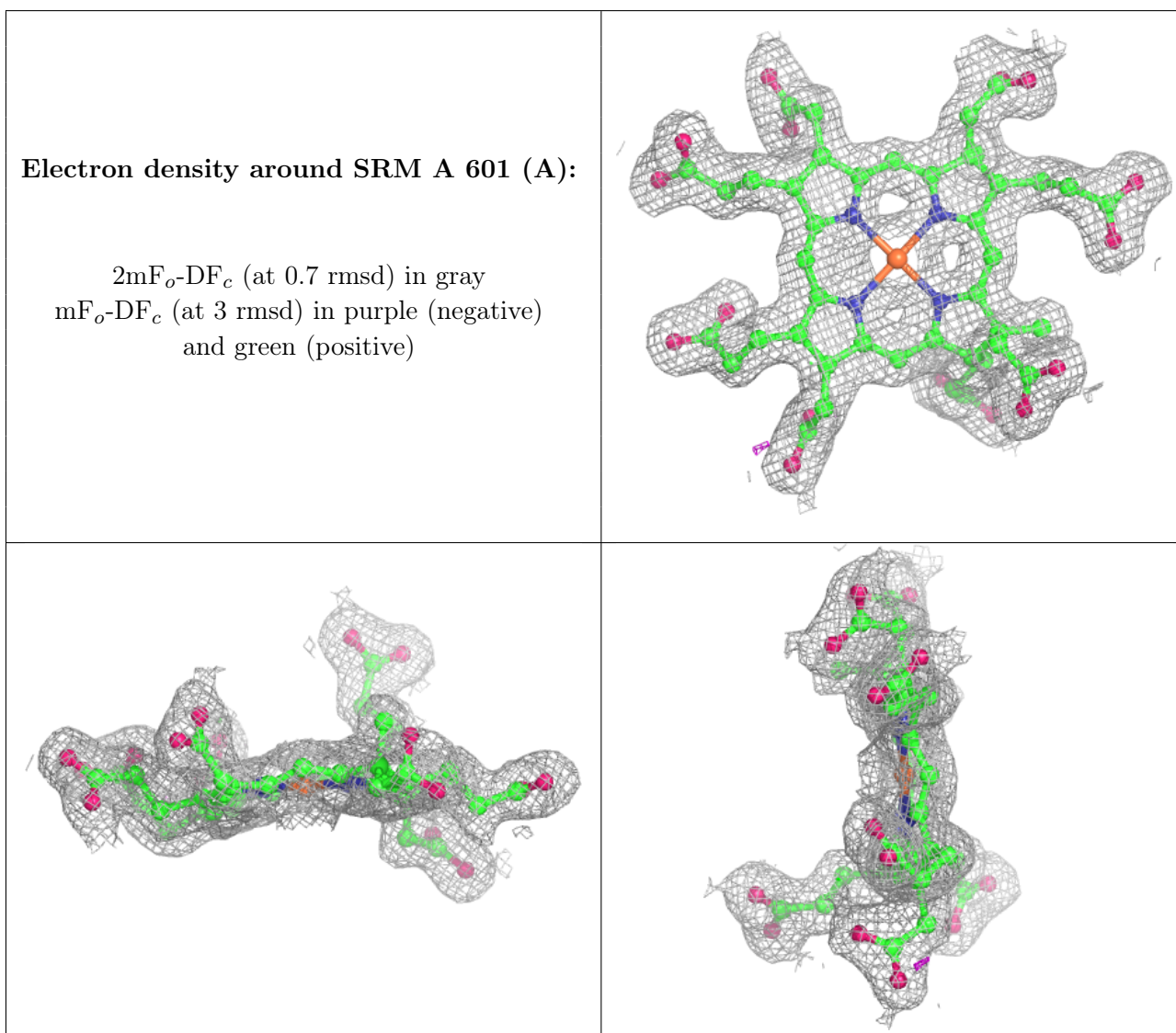
6.4 Ligands [i](#)

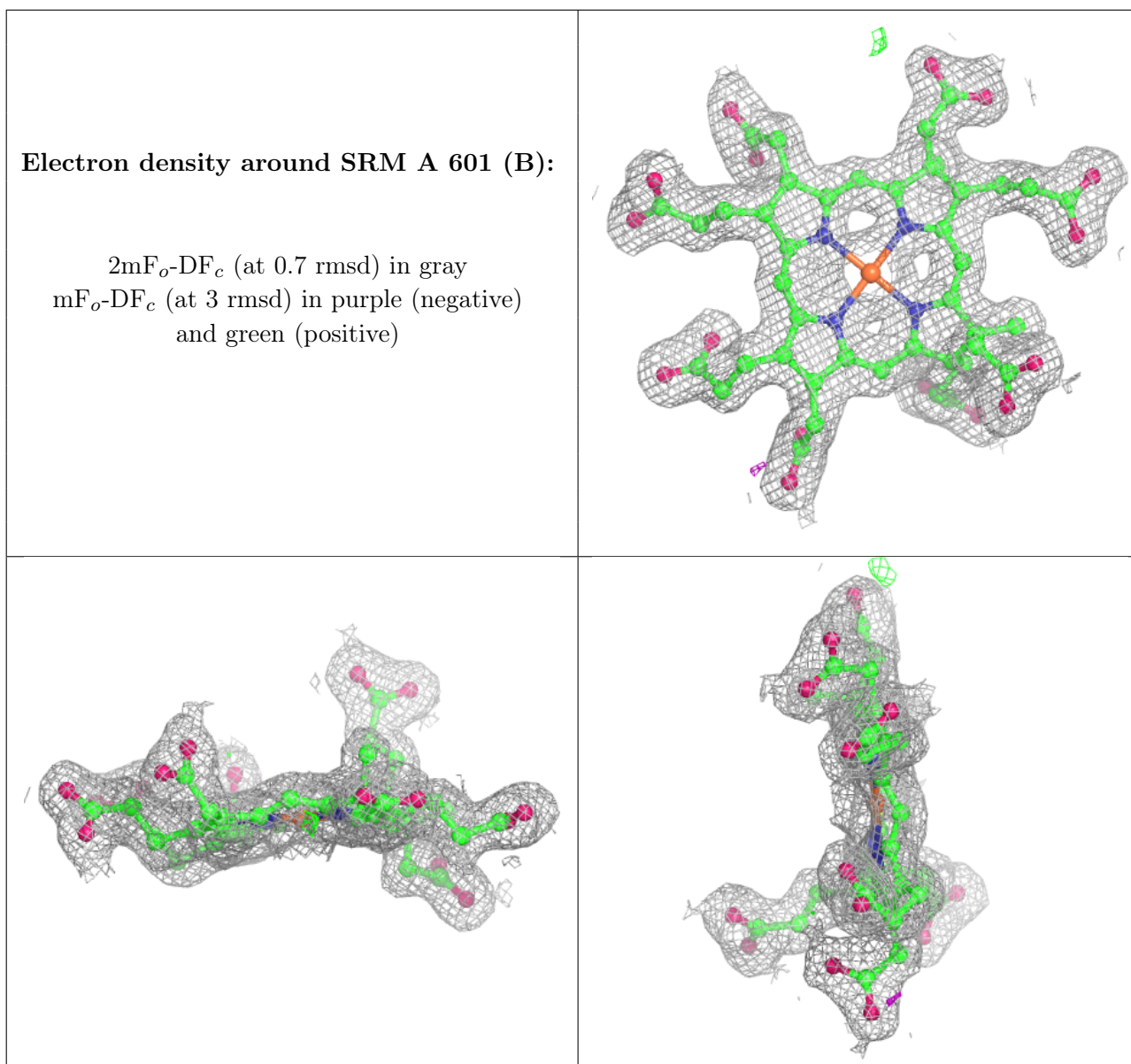
In the following table, the Atoms column lists the number of modelled atoms in the group and the number defined in the chemical component dictionary. The B-factors column lists the minimum,

median, 95th percentile and maximum values of B factors of atoms in the group. The column labelled 'Q< 0.9' lists the number of atoms with occupancy less than 0.9.

Mol	Type	Chain	Res	Atoms	RSCC	RSR	B-factors(Å ²)	Q<0.9
2	SRM	A	601[A]	63/63	0.99	0.12	13,16,22,26	2
2	SRM	A	601[B]	63/63	0.99	0.12	13,16,20,26	2
5	CL	A	604	1/1	0.99	0.07	28,28,28,28	0
5	CL	A	605	1/1	0.99	0.04	27,27,27,27	0
3	SF4	A	602	8/8	1.00	0.07	16,16,17,17	0
4	K	A	603	1/1	1.00	0.04	22,22,22,22	0

The following is a graphical depiction of the model fit to experimental electron density of all instances of the Ligand of Interest. In addition, ligands with molecular weight > 250 and outliers as shown on the geometry validation Tables will also be included. Each fit is shown from different orientation to approximate a three-dimensional view.





6.5 Other polymers [i](#)

There are no such residues in this entry.