



Full wwPDB X-ray Structure Validation Report ⓘ

Apr 27, 2024 – 11:15 am BST

PDB ID : 4B40
Title : Probing the active center of catalase-phenol oxidase from *Scytalidium thermophilum*
Authors : Yuzugullu, Y.; Trinh, C.H.; Pearson, A.R.; Ogel, Z.B.; McPherson, M.J.
Deposited on : 2012-07-27
Resolution : 1.93 Å(reported)

This is a Full wwPDB X-ray Structure Validation Report for a publicly released PDB entry.

We welcome your comments at validation@mail.wwpdb.org

A user guide is available at

<https://www.wwpdb.org/validation/2017/XrayValidationReportHelp>

with specific help available everywhere you see the ⓘ symbol.

The types of validation reports are described at

<http://www.wwpdb.org/validation/2017/FAQs#types>.

The following versions of software and data (see [references ⓘ](#)) were used in the production of this report:

MolProbity : 4.02b-467
Mogul : 1.8.4, CSD as541be (2020)
Xtriage (Phenix) : 1.13
EDS : 2.36.2
buster-report : 1.1.7 (2018)
Percentile statistics : 20191225.v01 (using entries in the PDB archive December 25th 2019)
Refmac : 5.8.0158
CCP4 : 7.0.044 (Gargrove)
Ideal geometry (proteins) : Engh & Huber (2001)
Ideal geometry (DNA, RNA) : Parkinson et al. (1996)
Validation Pipeline (wwPDB-VP) : 2.36.2

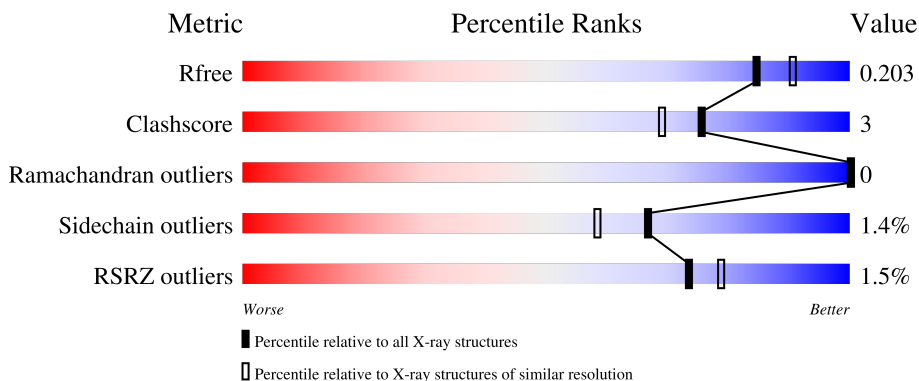
1 Overall quality at a glance

The following experimental techniques were used to determine the structure:

X-RAY DIFFRACTION

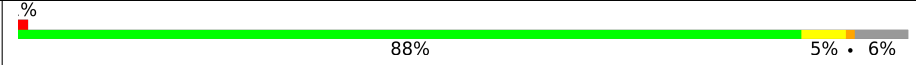
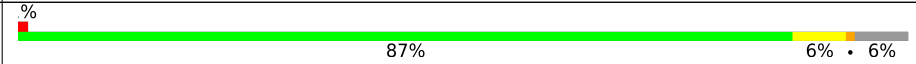
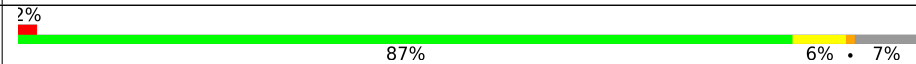

The reported resolution of this entry is 1.93 Å.

Percentile scores (ranging between 0-100) for global validation metrics of the entry are shown in the following graphic. The table shows the number of entries on which the scores are based.



Metric	Whole archive (#Entries)	Similar resolution (#Entries, resolution range(Å))
R_{free}	130704	4310 (1.96-1.92)
Clashscore	141614	1023 (1.94-1.94)
Ramachandran outliers	138981	1007 (1.94-1.94)
Sidechain outliers	138945	1007 (1.94-1.94)
RSRZ outliers	127900	4250 (1.96-1.92)

The table below summarises the geometric issues observed across the polymeric chains and their fit to the electron density. The red, orange, yellow and green segments of the lower bar indicate the fraction of residues that contain outliers for ≥ 3 , 2, 1 and 0 types of geometric quality criteria respectively. A grey segment represents the fraction of residues that are not modelled. The numeric value for each fraction is indicated below the corresponding segment, with a dot representing fractions $\leq 5\%$. The upper red bar (where present) indicates the fraction of residues that have poor fit to the electron density. The numeric value is given above the bar.

Mol	Chain	Length	Quality of chain
1	A	719	 2% 88% 5% • 6%
1	B	719	 2% 87% 6% • 6%
1	C	719	 2% 87% 6% • 7%
1	D	719	 2% 87% 6% 7%

2 Entry composition [i](#)

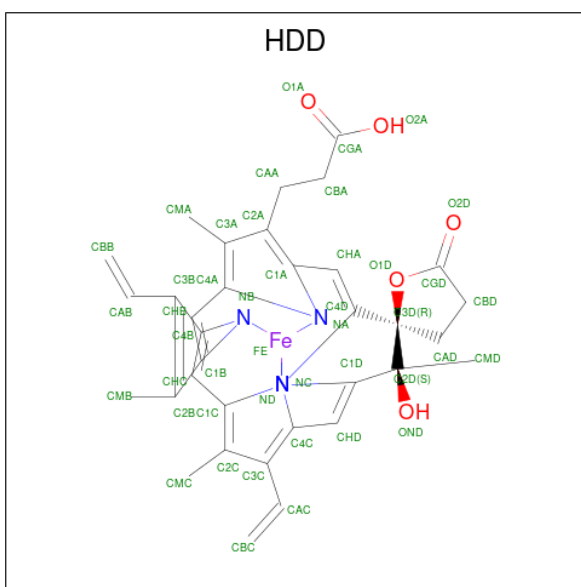
There are 4 unique types of molecules in this entry. The entry contains 23833 atoms, of which 0 are hydrogens and 0 are deuteriums.

In the tables below, the ZeroOcc column contains the number of atoms modelled with zero occupancy, the AltConf column contains the number of residues with at least one atom in alternate conformation and the Trace column contains the number of residues modelled with at most 2 atoms.

- Molecule 1 is a protein called CATALASE-PHENOL OXIDASE.

Mol	Chain	Residues	Atoms					ZeroOcc	AltConf	Trace
			Total	C	N	O	S			
1	A	674	Total	C	N	O	S	0	35	0
			5491	3467	963	1048	13			
1	B	673	Total	C	N	O	S	0	37	0
			5507	3476	968	1051	12			
1	C	672	Total	C	N	O	S	0	39	0
			5506	3476	965	1051	14			
1	D	672	Total	C	N	O	S	0	32	0
			5466	3450	959	1044	13			

- Molecule 2 is CIS-HEME D HYDROXYCHLORIN GAMMA-SPIROLACTONE (three-letter code: HDD) (formula: $C_{34}H_{32}FeN_4O_5$).



Mol	Chain	Residues	Atoms				ZeroOcc	AltConf	
			Total	C	Fe	N			O
2	A	1	Total	C	Fe	N	O	0	0
			44	34	1	4	5		
2	B	1	Total	C	Fe	N	O	0	0
			44	34	1	4	5		

Continued on next page...

Continued from previous page...

Mol	Chain	Residues	Atoms				ZeroOcc	AltConf	
2	C	1	Total	C	Fe	N	O	0	0
			44	34	1	4	5		
2	D	1	Total	C	Fe	N	O	0	0
			44	34	1	4	5		

- Molecule 3 is CALCIUM ION (three-letter code: CA) (formula: Ca).

Mol	Chain	Residues	Atoms		ZeroOcc	AltConf
3	A	2	Total	Ca	0	0
			2	2		
3	B	1	Total	Ca	0	0
			1	1		
3	C	1	Total	Ca	0	0
			1	1		
3	D	1	Total	Ca	0	0
			1	1		

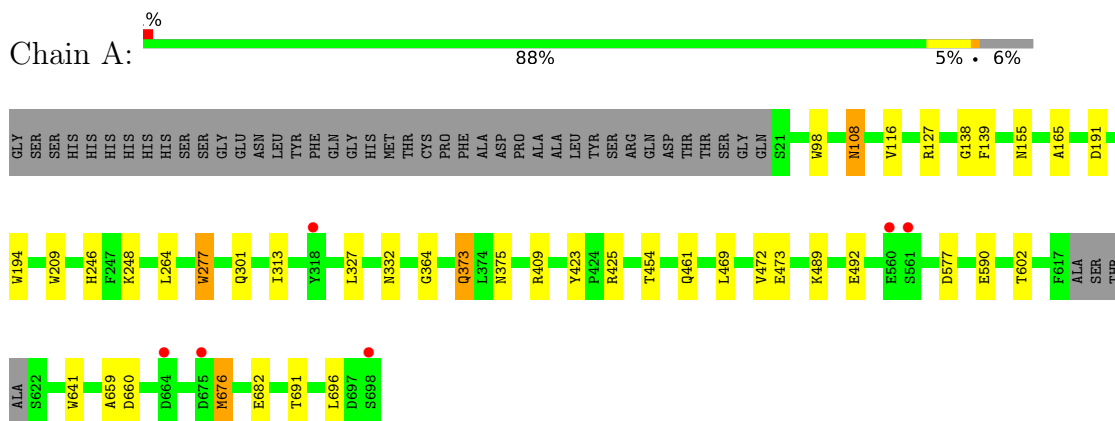
- Molecule 4 is water.

Mol	Chain	Residues	Atoms		ZeroOcc	AltConf
4	A	521	Total	O	0	0
			521	521		
4	B	485	Total	O	0	0
			485	485		
4	C	349	Total	O	0	0
			349	349		
4	D	327	Total	O	0	0
			327	327		

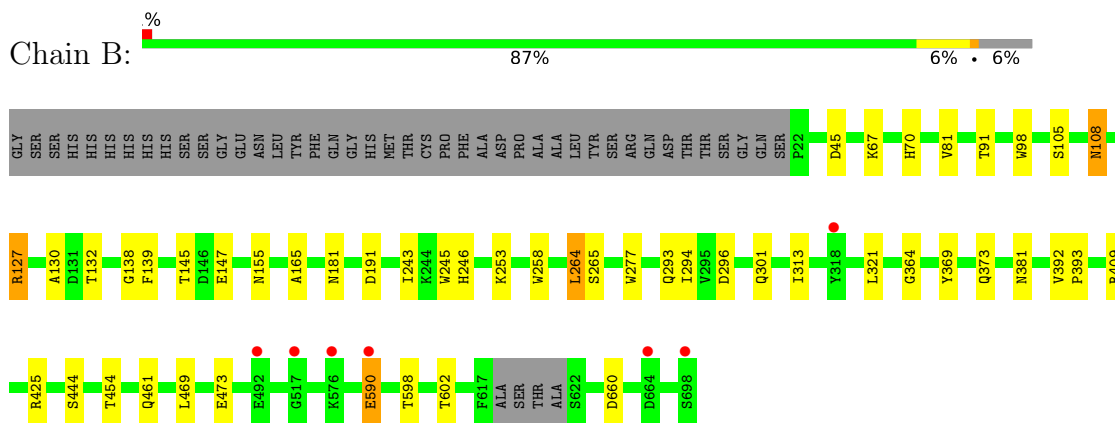
3 Residue-property plots [i](#)

These plots are drawn for all protein, RNA, DNA and oligosaccharide chains in the entry. The first graphic for a chain summarises the proportions of the various outlier classes displayed in the second graphic. The second graphic shows the sequence view annotated by issues in geometry and electron density. Residues are color-coded according to the number of geometric quality criteria for which they contain at least one outlier: green = 0, yellow = 1, orange = 2 and red = 3 or more. A red dot above a residue indicates a poor fit to the electron density ($RSRZ > 2$). Stretches of 2 or more consecutive residues without any outlier are shown as a green connector. Residues present in the sample, but not in the model, are shown in grey.

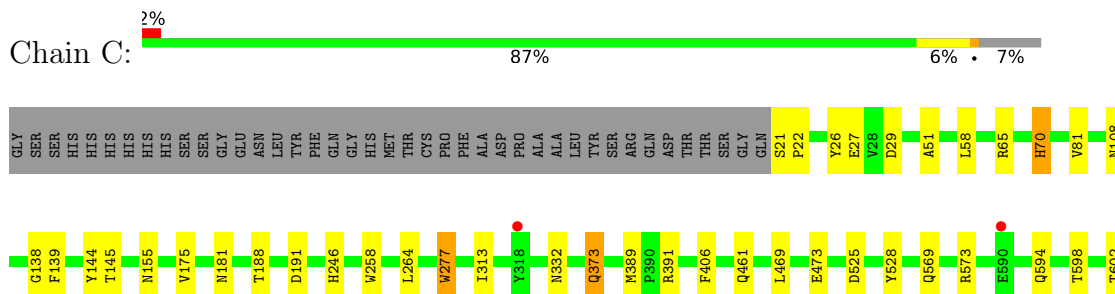
- Molecule 1: CATALASE-PHENOL OXIDASE

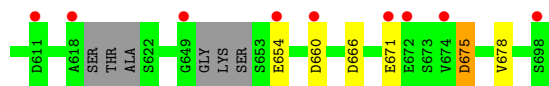


- Molecule 1: CATALASE-PHENOL OXIDASE



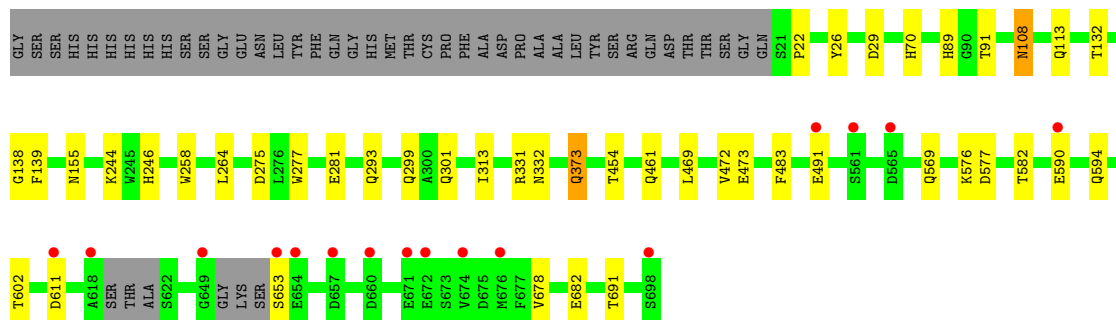
- Molecule 1: CATALASE-PHENOL OXIDASE





● Molecule 1: CATALASE-PHENOL OXIDASE

Chain D: 2% 87% 6% 7%



4 Data and refinement statistics

Property	Value	Source
Space group	C 1 2 1	Depositor
Cell constants a, b, c, α , β , γ	201.73Å 121.81Å 125.44Å 90.00° 115.10° 90.00°	Depositor
Resolution (Å)	29.41 – 1.93 29.41 – 1.93	Depositor EDS
% Data completeness (in resolution range)	97.7 (29.41-1.93) 97.8 (29.41-1.93)	Depositor EDS
R_{merge}	0.08	Depositor
R_{sym}	(Not available)	Depositor
$\langle I/\sigma(I) \rangle$ ¹	2.36 (at 1.93Å)	Xtrriage
Refinement program	REFMAC 5.6.0117	Depositor
R, R_{free}	0.166 , 0.199 0.170 , 0.203	Depositor DCC
R_{free} test set	9910 reflections (4.93%)	wwPDB-VP
Wilson B-factor (Å ²)	21.0	Xtrriage
Anisotropy	0.063	Xtrriage
Bulk solvent k_{sol} (e/Å ³), B_{sol} (Å ²)	0.33 , 40.6	EDS
L-test for twinning ²	$\langle L \rangle = 0.48$, $\langle L^2 \rangle = 0.31$	Xtrriage
Estimated twinning fraction	No twinning to report.	Xtrriage
F_o, F_c correlation	0.95	EDS
Total number of atoms	23833	wwPDB-VP
Average B, all atoms (Å ²)	22.0	wwPDB-VP

Xtrriage's analysis on translational NCS is as follows: *The analyses of the Patterson function reveals a significant off-origin peak that is 33.66 % of the origin peak, indicating pseudo-translational symmetry. The chance of finding a peak of this or larger height randomly in a structure without pseudo-translational symmetry is equal to 7.7171e-04. The detected translational NCS is most likely also responsible for the elevated intensity ratio.*

¹Intensities estimated from amplitudes.

²Theoretical values of $\langle |L| \rangle$, $\langle L^2 \rangle$ for acentric reflections are 0.5, 0.333 respectively for untwinned datasets, and 0.375, 0.2 for perfectly twinned datasets.

5 Model quality [i](#)

5.1 Standard geometry [i](#)

Bond lengths and bond angles in the following residue types are not validated in this section: CA, HDD

The Z score for a bond length (or angle) is the number of standard deviations the observed value is removed from the expected value. A bond length (or angle) with $|Z| > 5$ is considered an outlier worth inspection. RMSZ is the root-mean-square of all Z scores of the bond lengths (or angles).

Mol	Chain	Bond lengths		Bond angles	
		RMSZ	# Z >5	RMSZ	# Z >5
1	A	0.63	5/5686 (0.1%)	0.66	0/7715
1	B	0.63	4/5696 (0.1%)	0.66	0/7730
1	C	0.65	4/5706 (0.1%)	0.69	2/7741 (0.0%)
1	D	0.63	2/5642 (0.0%)	0.68	0/7658
All	All	0.64	15/22730 (0.1%)	0.67	2/30844 (0.0%)

Chiral center outliers are detected by calculating the chiral volume of a chiral center and verifying if the center is modelled as a planar moiety or with the opposite hand. A planarity outlier is detected by checking planarity of atoms in a peptide group, atoms in a mainchain group or atoms of a sidechain that are expected to be planar.

Mol	Chain	#Chirality outliers	#Planarity outliers
1	A	0	1
1	B	0	1
All	All	0	2

All (15) bond length outliers are listed below:

Mol	Chain	Res	Type	Atoms	Z	Observed(Å)	Ideal(Å)
1	C	654	GLU	C-N	-5.74	1.20	1.34
1	D	258	TRP	CD2-CE2	5.73	1.48	1.41
1	B	98	TRP	CD2-CE2	5.56	1.48	1.41
1	C	671	GLU	C-N	-5.50	1.21	1.34
1	B	258	TRP	CD2-CE2	5.36	1.47	1.41
1	D	653	SER	C-N	-5.35	1.21	1.34
1	A	194	TRP	CD2-CE2	5.31	1.47	1.41
1	A	277	TRP	CD2-CE2	5.30	1.47	1.41
1	B	277	TRP	CD2-CE2	5.25	1.47	1.41
1	C	258	TRP	CD2-CE2	5.25	1.47	1.41
1	C	277	TRP	CD2-CE2	5.24	1.47	1.41
1	A	98	TRP	CD2-CE2	5.23	1.47	1.41

Continued on next page...

Continued from previous page...

Mol	Chain	Res	Type	Atoms	Z	Observed(Å)	Ideal(Å)
1	B	245	TRP	CD2-CE2	5.18	1.47	1.41
1	A	641	TRP	CD2-CE2	5.12	1.47	1.41
1	A	209	TRP	CD2-CE2	5.09	1.47	1.41

All (2) bond angle outliers are listed below:

Mol	Chain	Res	Type	Atoms	Z	Observed(°)	Ideal(°)
1	C	675	ASP	CB-CG-OD1	5.54	123.29	118.30
1	C	65	ARG	NE-CZ-NH2	-5.07	117.77	120.30

There are no chirality outliers.

All (2) planarity outliers are listed below:

Mol	Chain	Res	Type	Group
1	A	127[A]	ARG	Sidechain
1	B	127[A]	ARG	Sidechain

5.2 Too-close contacts [i](#)

In the following table, the Non-H and H(model) columns list the number of non-hydrogen atoms and hydrogen atoms in the chain respectively. The H(added) column lists the number of hydrogen atoms added and optimized by MolProbity. The Clashes column lists the number of clashes within the asymmetric unit, whereas Symm-Clashes lists symmetry-related clashes.

Mol	Chain	Non-H	H(model)	H(added)	Clashes	Symm-Clashes
1	A	5491	0	5314	30	0
1	B	5507	0	5327	43	0
1	C	5506	0	5326	35	0
1	D	5466	0	5271	33	0
2	A	44	0	31	3	0
2	B	44	0	31	3	0
2	C	44	0	31	3	0
2	D	44	0	31	3	0
3	A	2	0	0	0	0
3	B	1	0	0	0	0
3	C	1	0	0	0	0
3	D	1	0	0	0	0
4	A	521	0	0	7	0
4	B	485	0	0	10	0
4	C	349	0	0	5	0
4	D	327	0	0	0	0

Continued on next page...

Continued from previous page...

Mol	Chain	Non-H	H(model)	H(added)	Clashes	Symm-Clashes
All	All	23833	0	21362	135	0

The all-atom clashscore is defined as the number of clashes found per 1000 atoms (including hydrogen atoms). The all-atom clashscore for this structure is 3.

All (135) close contacts within the same asymmetric unit are listed below, sorted by their clash magnitude.

Atom-1	Atom-2	Interatomic distance (Å)	Clash overlap (Å)
1:B:127[B]:ARG:O	4:B:2096:HOH:O	1.60	1.17
1:D:313:ILE:H	1:D:461:GLN:HE22	1.09	0.96
1:B:91[B]:THR:HG22	4:B:2104:HOH:O	1.71	0.90
1:C:313:ILE:H	1:C:461:GLN:HE22	1.18	0.90
1:A:492[B]:GLU:HG2	4:A:2442:HOH:O	1.70	0.89
1:B:313:ILE:H	1:B:461:GLN:HE22	1.16	0.89
1:C:406:PHE:HZ	4:C:2226:HOH:O	1.56	0.88
1:A:313:ILE:H	1:A:461:GLN:HE22	1.21	0.86
1:B:425[B]:ARG:CZ	4:B:2366:HOH:O	2.24	0.86
1:B:409[B]:ARG:HH11	1:B:409[B]:ARG:HG2	1.41	0.85
1:C:573[A]:ARG:HG2	1:C:678:VAL:HG21	1.61	0.81
1:B:264:LEU:HG	1:B:602:THR:HB	1.66	0.78
1:C:21:SER:HB3	1:C:22:PRO:HD3	1.64	0.78
1:C:264:LEU:HG	1:C:602:THR:HB	1.71	0.73
1:D:264:LEU:HG	1:D:602:THR:HB	1.70	0.73
1:D:299[B]:GLN:HA	1:D:299[B]:GLN:HE21	1.53	0.73
1:D:22:PRO:O	1:D:26:TYR:HD2	1.71	0.73
1:B:246[A]:HIS:HE1	4:B:2234:HOH:O	1.71	0.72
1:A:264:LEU:HG	1:A:602:THR:HB	1.72	0.71
1:A:155:ASN:ND2	2:A:900:HDD:HMB2	2.06	0.70
1:A:409[A]:ARG:HH11	1:A:409[A]:ARG:HG2	1.59	0.67
1:B:81:VAL:HG21	4:B:2092:HOH:O	1.96	0.66
1:B:373:GLN:HE21	1:B:373:GLN:HA	1.60	0.66
1:A:423:TYR:CE1	1:A:425[A]:ARG:HD2	2.30	0.66
1:B:108:ASN:C	1:B:108:ASN:HD22	1.98	0.66
1:A:155:ASN:CG	2:A:900:HDD:HMB2	2.16	0.66
1:C:389[B]:MET:SD	4:C:2226:HOH:O	2.54	0.65
1:D:299[B]:GLN:HA	1:D:299[B]:GLN:NE2	2.12	0.65
1:B:469:LEU:HB3	1:B:473:GLU:HB3	1.79	0.65
1:D:373:GLN:HE21	1:D:373:GLN:HA	1.62	0.65
1:D:299[B]:GLN:HE21	1:D:299[B]:GLN:CA	2.10	0.64
1:A:373:GLN:HE21	1:A:373:GLN:HA	1.63	0.63
1:D:91[A]:THR:HG21	1:D:113:GLN:HE21	1.65	0.60

Continued on next page...

Continued from previous page...

Atom-1	Atom-2	Interatomic distance (Å)	Clash overlap (Å)
1:A:248[A]:LYS:HG2	4:A:2249:HOH:O	2.02	0.60
1:D:472[A]:VAL:HG11	1:D:691:THR:HB	1.83	0.60
1:D:301:GLN:HE22	1:D:454:THR:HG21	1.66	0.59
1:C:155:ASN:CG	2:C:900:HDD:HMB2	2.23	0.58
1:B:127[B]:ARG:NH1	4:B:2075:HOH:O	2.36	0.58
1:B:155:ASN:CG	2:B:900:HDD:HMB2	2.23	0.58
1:A:246[A]:HIS:HE1	4:A:2246:HOH:O	1.85	0.58
1:C:373:GLN:HE21	1:C:373:GLN:HA	1.69	0.57
1:D:472[B]:VAL:HG11	1:D:691:THR:HB	1.88	0.56
1:D:108:ASN:HD22	1:D:108:ASN:C	2.10	0.56
1:C:569[B]:GLN:NE2	1:C:569[B]:GLN:HA	2.20	0.56
1:D:469:LEU:HB3	1:D:473:GLU:HB3	1.88	0.55
1:C:21:SER:HB3	1:C:22:PRO:CD	2.34	0.55
1:D:155:ASN:CG	2:D:900:HDD:HMB2	2.27	0.55
1:C:573[A]:ARG:NE	1:C:675:ASP:OD1	2.38	0.55
1:B:409[B]:ARG:HH11	1:B:409[B]:ARG:CG	2.18	0.54
1:A:676[A]:MET:HE3	1:A:676[A]:MET:HA	1.90	0.54
1:B:132:THR:HG21	1:B:264:LEU:HD13	1.89	0.54
1:B:409[B]:ARG:HG2	1:B:409[B]:ARG:NH1	2.14	0.54
1:B:155:ASN:ND2	2:B:900:HDD:HMB2	2.23	0.53
1:D:299[B]:GLN:NE2	1:D:299[B]:GLN:CA	2.72	0.53
1:B:425[B]:ARG:NH1	4:B:2366:HOH:O	2.39	0.53
1:C:22:PRO:O	1:C:26:TYR:HD2	1.91	0.53
1:B:313:ILE:N	1:B:461:GLN:HE22	1.98	0.53
1:C:155:ASN:ND2	2:C:900:HDD:HMB2	2.25	0.51
1:A:116:VAL:HG21	1:A:327:LEU:HD11	1.93	0.51
1:A:301:GLN:NE2	1:A:454:THR:HG21	2.25	0.51
1:D:138:GLY:HA3	2:D:900:HDD:HMA2	1.93	0.50
1:B:165:ALA:CB	1:B:364:GLY:HA3	2.40	0.50
1:B:243:ILE:HA	1:B:293:GLN:O	2.12	0.50
1:C:138:GLY:HA3	2:C:900:HDD:HMA2	1.93	0.50
1:C:246[A]:HIS:HE1	4:C:2152:HOH:O	1.94	0.50
1:C:469:LEU:HB3	1:C:473:GLU:HB3	1.94	0.50
1:A:138:GLY:HA3	2:A:900:HDD:HMA2	1.94	0.50
1:B:409[A]:ARG:HH11	1:C:29:ASP:HB2	1.76	0.50
1:A:246[A]:HIS:CE1	4:A:2246:HOH:O	2.63	0.50
1:A:165:ALA:CB	1:A:364:GLY:HA3	2.41	0.50
1:A:472[A]:VAL:HG11	1:A:691:THR:HB	1.94	0.50
1:B:105:SER:CB	1:B:147[B]:GLU:HG3	2.42	0.49
1:D:155:ASN:ND2	2:D:900:HDD:HMB2	2.27	0.49
1:B:108:ASN:C	1:B:108:ASN:ND2	2.65	0.49

Continued on next page...

Continued from previous page...

Atom-1	Atom-2	Interatomic distance (Å)	Clash overlap (Å)
1:C:81:VAL:HG21	4:C:2035:HOH:O	2.11	0.48
1:D:244:LYS:HB2	1:D:246[A]:HIS:HE1	1.79	0.48
1:B:301:GLN:HE22	1:B:454:THR:HG21	1.79	0.47
1:D:244:LYS:HB2	1:D:246[A]:HIS:CE1	2.49	0.47
1:D:313:ILE:N	1:D:461:GLN:HE22	1.93	0.47
1:D:582:THR:HG21	1:D:594[A]:GLN:HE21	1.79	0.47
1:A:472[B]:VAL:HG22	1:A:696:LEU:HD21	1.95	0.47
1:B:293:GLN:HG3	1:B:321:LEU:HD23	1.96	0.47
1:A:469:LEU:HB3	1:A:473:GLU:HB3	1.95	0.47
1:A:375:ASN:ND2	4:A:2082:HOH:O	2.48	0.46
1:B:253:LYS:HG2	4:B:2213:HOH:O	2.15	0.46
1:B:373:GLN:HA	1:B:373:GLN:NE2	2.29	0.46
4:A:2377:HOH:O	1:D:29:ASP:OD2	2.21	0.46
1:A:577:ASP:OD2	1:A:682:GLU:OE2	2.32	0.46
1:B:294[B]:ILE:O	1:B:294[B]:ILE:HG23	2.15	0.45
1:B:409[B]:ARG:HD2	1:C:27:GLU:OE1	2.16	0.45
1:B:590[B]:GLU:HA	1:B:590[B]:GLU:OE1	2.15	0.45
1:C:144:TYR:HB3	1:C:391[B]:ARG:HD3	1.99	0.45
1:C:313:ILE:N	1:C:461:GLN:HE22	2.00	0.45
1:B:301:GLN:NE2	1:B:454:THR:HG21	2.31	0.45
1:B:294[B]:ILE:HG22	4:B:2271:HOH:O	2.17	0.44
1:B:45:ASP:HB2	1:B:67:LYS:HD2	1.98	0.44
1:A:423:TYR:HE1	1:A:425[A]:ARG:HD2	1.81	0.44
1:D:313:ILE:H	1:D:461:GLN:NE2	1.93	0.44
1:C:175[B]:VAL:HG22	1:C:188:THR:HG22	1.98	0.44
1:D:246[A]:HIS:CE1	1:D:293:GLN:OE1	2.71	0.44
1:C:594[A]:GLN:HG3	1:C:598:THR:OG1	2.18	0.44
1:A:472[B]:VAL:HG11	1:A:691:THR:HB	2.00	0.43
1:B:181:ASN:HB3	1:D:277:TRP:CE3	2.53	0.43
1:D:89:HIS:HB2	1:D:331[A]:ARG:HB3	2.00	0.43
1:B:138:GLY:HA3	2:B:900:HDD:HMA2	2.00	0.43
1:C:21:SER:CB	1:C:22:PRO:HD3	2.42	0.43
1:A:659:ALA:O	1:A:660[B]:ASP:HB2	2.19	0.43
1:A:277:TRP:CH2	1:A:332:ASN:HB3	2.54	0.43
1:C:51:ALA:HB2	1:C:58:LEU:HD21	1.99	0.43
1:C:144:TYR:HB3	1:C:391[A]:ARG:HG2	2.00	0.43
1:A:373:GLN:HA	1:A:373:GLN:NE2	2.32	0.42
1:A:489[A]:LYS:HD2	4:A:2213:HOH:O	2.19	0.42
1:B:381:ASN:OD1	1:C:70:HIS:HE1	2.03	0.42
1:A:108:ASN:C	1:A:108:ASN:HD22	2.22	0.42
1:C:277:TRP:CH2	1:C:332:ASN:HB3	2.54	0.42

Continued on next page...

Continued from previous page...

Atom-1	Atom-2	Interatomic distance (Å)	Clash overlap (Å)
1:C:246[A]:HIS:CE1	4:C:2152:HOH:O	2.71	0.42
1:D:577:ASP:OD2	1:D:682:GLU:OE2	2.38	0.42
1:B:369:TYR:O	1:B:373:GLN:HG2	2.19	0.42
1:B:409[B]:ARG:CG	1:B:409[B]:ARG:NH1	2.77	0.42
1:D:281:GLU:HG2	1:D:332:ASN:ND2	2.34	0.42
1:B:425[B]:ARG:NE	4:B:2366:HOH:O	2.47	0.42
1:A:277:TRP:CZ3	1:C:181:ASN:HB3	2.55	0.42
1:B:392[B]:VAL:HG13	1:B:393:PRO:HD2	2.01	0.42
1:D:373:GLN:HA	1:D:373:GLN:NE2	2.32	0.42
1:B:598:THR:HG22	1:D:483:PHE:CD2	2.55	0.41
1:D:132:THR:HG21	1:D:264:LEU:HD13	2.02	0.41
1:C:525:ASP:HA	1:C:528:TYR:CD2	2.56	0.41
1:C:144:TYR:CB	1:C:391[B]:ARG:HD3	2.50	0.41
1:C:313:ILE:H	1:C:461:GLN:NE2	1.99	0.41
1:C:277:TRP:CZ3	1:C:332:ASN:HB3	2.55	0.41
1:A:590[B]:GLU:HA	1:A:590[B]:GLU:OE1	2.21	0.40
1:C:666[B]:ASP:OD1	1:C:666[B]:ASP:N	2.45	0.40
1:B:130:ALA:CB	1:B:265[B]:SER:HB2	2.51	0.40
1:D:108:ASN:C	1:D:108:ASN:ND2	2.74	0.40
1:D:678:VAL:O	1:D:682:GLU:HG3	2.21	0.40

There are no symmetry-related clashes.

5.3 Torsion angles [i](#)

5.3.1 Protein backbone [i](#)

In the following table, the Percentiles column shows the percent Ramachandran outliers of the chain as a percentile score with respect to all X-ray entries followed by that with respect to entries of similar resolution.

The Analysed column shows the number of residues for which the backbone conformation was analysed, and the total number of residues.

Mol	Chain	Analysed	Favoured	Allowed	Outliers	Percentiles	
1	A	705/719 (98%)	691 (98%)	14 (2%)	0	100	100
1	B	706/719 (98%)	685 (97%)	21 (3%)	0	100	100
1	C	705/719 (98%)	690 (98%)	15 (2%)	0	100	100
1	D	698/719 (97%)	679 (97%)	19 (3%)	0	100	100
All	All	2814/2876 (98%)	2745 (98%)	69 (2%)	0	100	100

There are no Ramachandran outliers to report.

5.3.2 Protein sidechains [i](#)

In the following table, the Percentiles column shows the percent sidechain outliers of the chain as a percentile score with respect to all X-ray entries followed by that with respect to entries of similar resolution.

The Analysed column shows the number of residues for which the sidechain conformation was analysed, and the total number of residues.

Mol	Chain	Analysed	Rotameric	Outliers	Percentiles	
1	A	593/595 (100%)	587 (99%)	6 (1%)	76	71
1	B	594/595 (100%)	582 (98%)	12 (2%)	55	42
1	C	595/595 (100%)	588 (99%)	7 (1%)	71	64
1	D	588/595 (99%)	577 (98%)	11 (2%)	57	45
All	All	2370/2380 (100%)	2334 (98%)	36 (2%)	67	56

All (36) residues with a non-rotameric sidechain are listed below:

Mol	Chain	Res	Type
1	A	108	ASN
1	A	139	PHE
1	A	191	ASP
1	A	373	GLN
1	A	676[A]	MET
1	A	676[B]	MET
1	B	70	HIS
1	B	108	ASN
1	B	139	PHE
1	B	145	THR
1	B	191	ASP
1	B	264	LEU
1	B	296	ASP
1	B	444[A]	SER
1	B	444[B]	SER
1	B	590[A]	GLU
1	B	590[B]	GLU
1	B	660	ASP
1	C	70	HIS
1	C	108	ASN
1	C	139	PHE
1	C	145	THR

Continued on next page...

Continued from previous page...

Mol	Chain	Res	Type
1	C	191	ASP
1	C	373	GLN
1	C	660	ASP
1	D	70	HIS
1	D	108	ASN
1	D	139	PHE
1	D	275	ASP
1	D	373	GLN
1	D	491	GLU
1	D	569	GLN
1	D	576	LYS
1	D	590[A]	GLU
1	D	590[B]	GLU
1	D	611	ASP

Sometimes sidechains can be flipped to improve hydrogen bonding and reduce clashes. All (23) such sidechains are listed below:

Mol	Chain	Res	Type
1	A	108	ASN
1	A	167	GLN
1	A	301	GLN
1	A	373	GLN
1	A	375	ASN
1	A	461	GLN
1	B	108	ASN
1	B	301	GLN
1	B	373	GLN
1	B	375	ASN
1	B	461	GLN
1	C	108	ASN
1	C	301	GLN
1	C	373	GLN
1	C	375	ASN
1	C	461	GLN
1	D	108	ASN
1	D	113	GLN
1	D	167	GLN
1	D	301	GLN
1	D	373	GLN
1	D	375	ASN
1	D	461	GLN

5.3.3 RNA [i](#)

There are no RNA molecules in this entry.

5.4 Non-standard residues in protein, DNA, RNA chains [i](#)

There are no non-standard protein/DNA/RNA residues in this entry.

5.5 Carbohydrates [i](#)

There are no monosaccharides in this entry.

5.6 Ligand geometry [i](#)

Of 9 ligands modelled in this entry, 5 are monoatomic - leaving 4 for Mogul analysis.

In the following table, the Counts columns list the number of bonds (or angles) for which Mogul statistics could be retrieved, the number of bonds (or angles) that are observed in the model and the number of bonds (or angles) that are defined in the Chemical Component Dictionary. The Link column lists molecule types, if any, to which the group is linked. The Z score for a bond length (or angle) is the number of standard deviations the observed value is removed from the expected value. A bond length (or angle) with $|Z| > 2$ is considered an outlier worth inspection. RMSZ is the root-mean-square of all Z scores of the bond lengths (or angles).

Mol	Type	Chain	Res	Link	Bond lengths			Bond angles		
					Counts	RMSZ	# Z > 2	Counts	RMSZ	# Z > 2
2	HDD	D	900	1	41,52,52	1.64	7 (17%)	31,89,89	2.35	9 (29%)
2	HDD	B	900	1	41,52,52	1.76	9 (21%)	31,89,89	2.33	13 (41%)
2	HDD	A	900	1	41,52,52	1.72	8 (19%)	31,89,89	2.42	13 (41%)
2	HDD	C	900	1	41,52,52	1.72	7 (17%)	31,89,89	2.38	13 (41%)

In the following table, the Chirals column lists the number of chiral outliers, the number of chiral centers analysed, the number of these observed in the model and the number defined in the Chemical Component Dictionary. Similar counts are reported in the Torsion and Rings columns. '-' means no outliers of that kind were identified.

Mol	Type	Chain	Res	Link	Chirals	Torsions	Rings
2	HDD	D	900	1	-	2/5/89/89	0/1/9/9
2	HDD	B	900	1	-	2/5/89/89	0/1/9/9
2	HDD	A	900	1	-	2/5/89/89	0/1/9/9
2	HDD	C	900	1	-	2/5/89/89	0/1/9/9

All (31) bond length outliers are listed below:

Mol	Chain	Res	Type	Atoms	Z	Observed(Å)	Ideal(Å)
2	A	900	HDD	C3C-C2C	4.72	1.46	1.40
2	C	900	HDD	C3B-C2B	4.61	1.46	1.40
2	B	900	HDD	O1D-CGD	4.60	1.43	1.35
2	C	900	HDD	O1D-CGD	4.57	1.43	1.35
2	A	900	HDD	O1D-CGD	4.54	1.43	1.35
2	D	900	HDD	O1D-CGD	4.52	1.43	1.35
2	B	900	HDD	C3C-C2C	4.33	1.46	1.40
2	C	900	HDD	C3C-C2C	4.32	1.46	1.40
2	B	900	HDD	C3B-C2B	4.18	1.46	1.40
2	D	900	HDD	C3B-C2B	4.12	1.46	1.40
2	A	900	HDD	C3B-C2B	4.07	1.46	1.40
2	D	900	HDD	C3C-C2C	3.66	1.45	1.40
2	C	900	HDD	C2A-C3A	3.47	1.47	1.37
2	A	900	HDD	C2B-C1B	3.31	1.50	1.42
2	B	900	HDD	C2A-C3A	3.18	1.47	1.37
2	D	900	HDD	C2A-C3A	3.16	1.47	1.37
2	B	900	HDD	C2B-C1B	3.03	1.49	1.42
2	A	900	HDD	C2A-C3A	2.87	1.46	1.37
2	C	900	HDD	C2B-C1B	2.81	1.48	1.42
2	B	900	HDD	C4A-CHB	2.75	1.48	1.41
2	A	900	HDD	C1A-CHA	2.73	1.48	1.41
2	D	900	HDD	C1A-CHA	2.68	1.48	1.41
2	C	900	HDD	C1A-CHA	2.60	1.48	1.41
2	D	900	HDD	C2B-C1B	2.46	1.48	1.42
2	A	900	HDD	C4A-CHB	2.40	1.47	1.41
2	C	900	HDD	C4A-CHB	2.29	1.47	1.41
2	B	900	HDD	C1C-CHC	2.26	1.47	1.41
2	A	900	HDD	C4C-CHD	2.25	1.47	1.41
2	B	900	HDD	C1A-CHA	2.17	1.47	1.41
2	B	900	HDD	C4C-CHD	2.09	1.46	1.41
2	D	900	HDD	C4A-CHB	2.04	1.46	1.41

All (48) bond angle outliers are listed below:

Mol	Chain	Res	Type	Atoms	Z	Observed(°)	Ideal(°)
2	B	900	HDD	C4A-C3A-C2A	-7.23	101.97	107.00
2	A	900	HDD	C4A-C3A-C2A	-6.71	102.33	107.00
2	C	900	HDD	C4A-C3A-C2A	-6.57	102.43	107.00
2	D	900	HDD	C4A-C3A-C2A	-5.75	102.99	107.00
2	D	900	HDD	CBA-CAA-C2A	-4.74	104.54	112.62
2	A	900	HDD	CBA-CAA-C2A	-4.57	104.81	112.62
2	B	900	HDD	CBA-CAA-C2A	-4.48	104.98	112.62

Continued on next page...

Continued from previous page...

Mol	Chain	Res	Type	Atoms	Z	Observed(°)	Ideal(°)
2	A	900	HDD	C2D-C1D-CHD	-4.38	117.06	124.28
2	D	900	HDD	CAA-CBA-CGA	-4.36	101.55	113.76
2	C	900	HDD	CBA-CAA-C2A	-4.26	105.36	112.62
2	D	900	HDD	C2D-C1D-CHD	-4.25	117.26	124.28
2	C	900	HDD	C2D-C1D-CHD	-3.85	117.93	124.28
2	C	900	HDD	OND-C2D-CMD	-3.46	103.22	109.59
2	A	900	HDD	C3C-C4C-NC	3.40	113.60	109.21
2	C	900	HDD	CAA-CBA-CGA	-3.39	104.25	113.76
2	B	900	HDD	CAA-CBA-CGA	-3.39	104.25	113.76
2	D	900	HDD	C3C-C4C-NC	3.34	113.52	109.21
2	C	900	HDD	C3C-C4C-NC	3.32	113.50	109.21
2	B	900	HDD	CMC-C2C-C3C	3.20	130.67	124.68
2	B	900	HDD	C2D-C1D-CHD	-3.18	119.03	124.28
2	A	900	HDD	CMC-C2C-C3C	3.18	130.63	124.68
2	D	900	HDD	CMC-C2C-C3C	3.12	130.52	124.68
2	D	900	HDD	C1A-CHA-C4D	-3.01	124.15	130.12
2	B	900	HDD	CMA-C3A-C2A	2.92	130.45	124.94
2	B	900	HDD	C3C-C4C-NC	2.90	112.96	109.21
2	C	900	HDD	CMA-C3A-C2A	2.89	130.39	124.94
2	D	900	HDD	CMB-C2B-C3B	2.88	130.07	124.68
2	C	900	HDD	O1D-CGD-O2D	2.86	123.35	120.80
2	A	900	HDD	CAA-CBA-CGA	-2.85	105.77	113.76
2	A	900	HDD	CMA-C3A-C2A	2.85	130.31	124.94
2	C	900	HDD	CMB-C2B-C3B	2.79	129.89	124.68
2	B	900	HDD	C1A-CHA-C4D	-2.79	124.60	130.12
2	A	900	HDD	OND-C2D-CMD	-2.78	104.47	109.59
2	A	900	HDD	C1A-CHA-C4D	-2.74	124.70	130.12
2	B	900	HDD	OND-C2D-CMD	-2.40	105.17	109.59
2	B	900	HDD	CMB-C2B-C3B	2.36	129.10	124.68
2	C	900	HDD	CMD-C2D-C1D	2.35	116.81	112.63
2	C	900	HDD	C1A-CHA-C4D	-2.33	125.50	130.12
2	A	900	HDD	C2B-C3B-C4B	-2.27	105.31	106.90
2	A	900	HDD	CMB-C2B-C3B	2.21	128.81	124.68
2	B	900	HDD	C3D-C4D-CHA	-2.17	117.89	124.34
2	C	900	HDD	CMC-C2C-C3C	2.17	128.73	124.68
2	A	900	HDD	CHD-C1D-ND	2.16	127.36	124.20
2	B	900	HDD	CHA-C4D-ND	2.13	127.33	124.20
2	B	900	HDD	O1D-CGD-O2D	2.09	122.67	120.80
2	A	900	HDD	C4C-CHD-C1D	-2.09	125.97	130.12
2	C	900	HDD	C4C-CHD-C1D	-2.08	126.01	130.12
2	D	900	HDD	CMA-C3A-C2A	2.04	128.79	124.94

There are no chirality outliers.

All (8) torsion outliers are listed below:

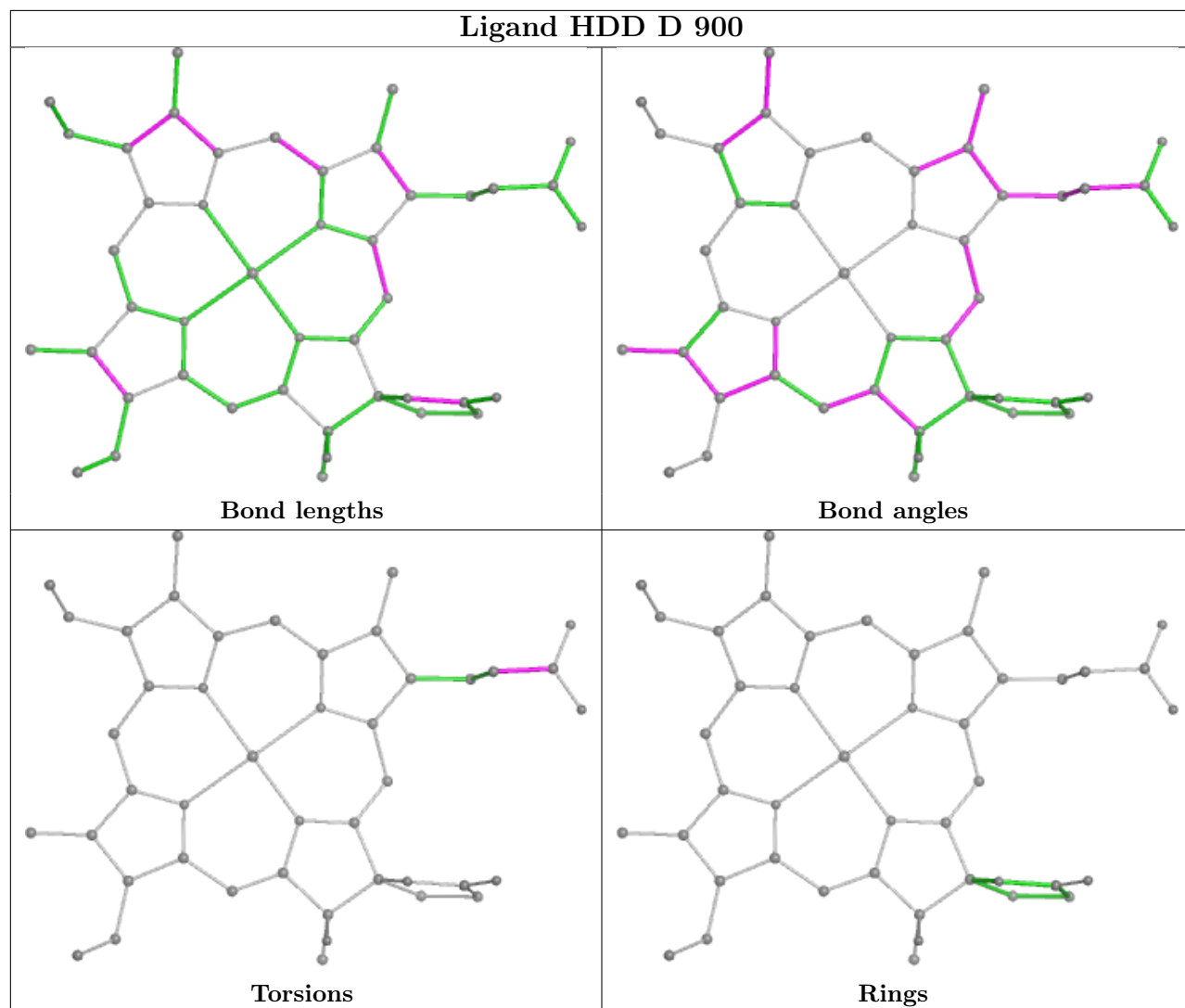
Mol	Chain	Res	Type	Atoms
2	C	900	HDD	CAA-CBA-CGA-O2A
2	A	900	HDD	CAA-CBA-CGA-O2A
2	B	900	HDD	CAA-CBA-CGA-O1A
2	A	900	HDD	CAA-CBA-CGA-O1A
2	D	900	HDD	CAA-CBA-CGA-O1A
2	D	900	HDD	CAA-CBA-CGA-O2A
2	B	900	HDD	CAA-CBA-CGA-O2A
2	C	900	HDD	CAA-CBA-CGA-O1A

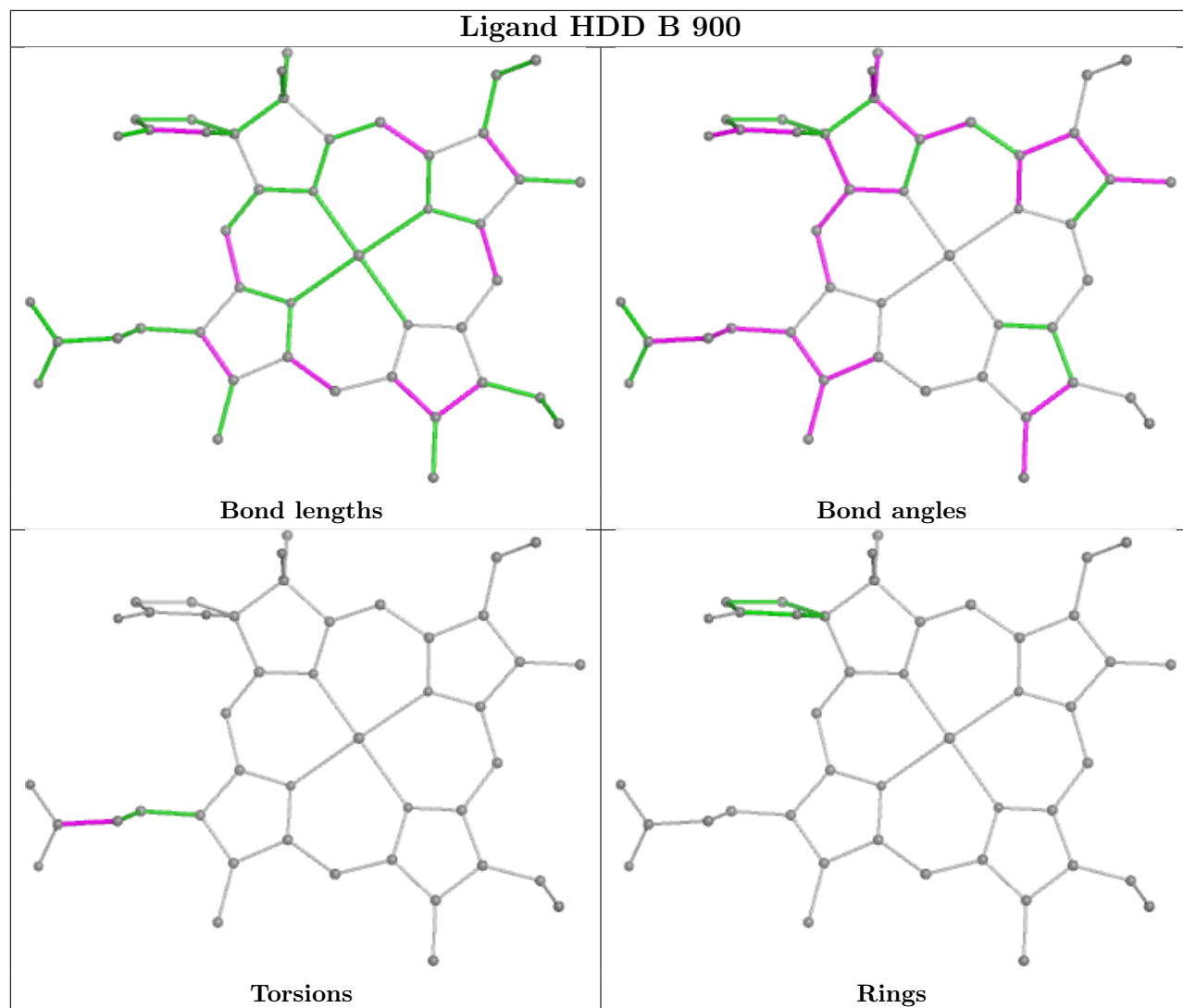
There are no ring outliers.

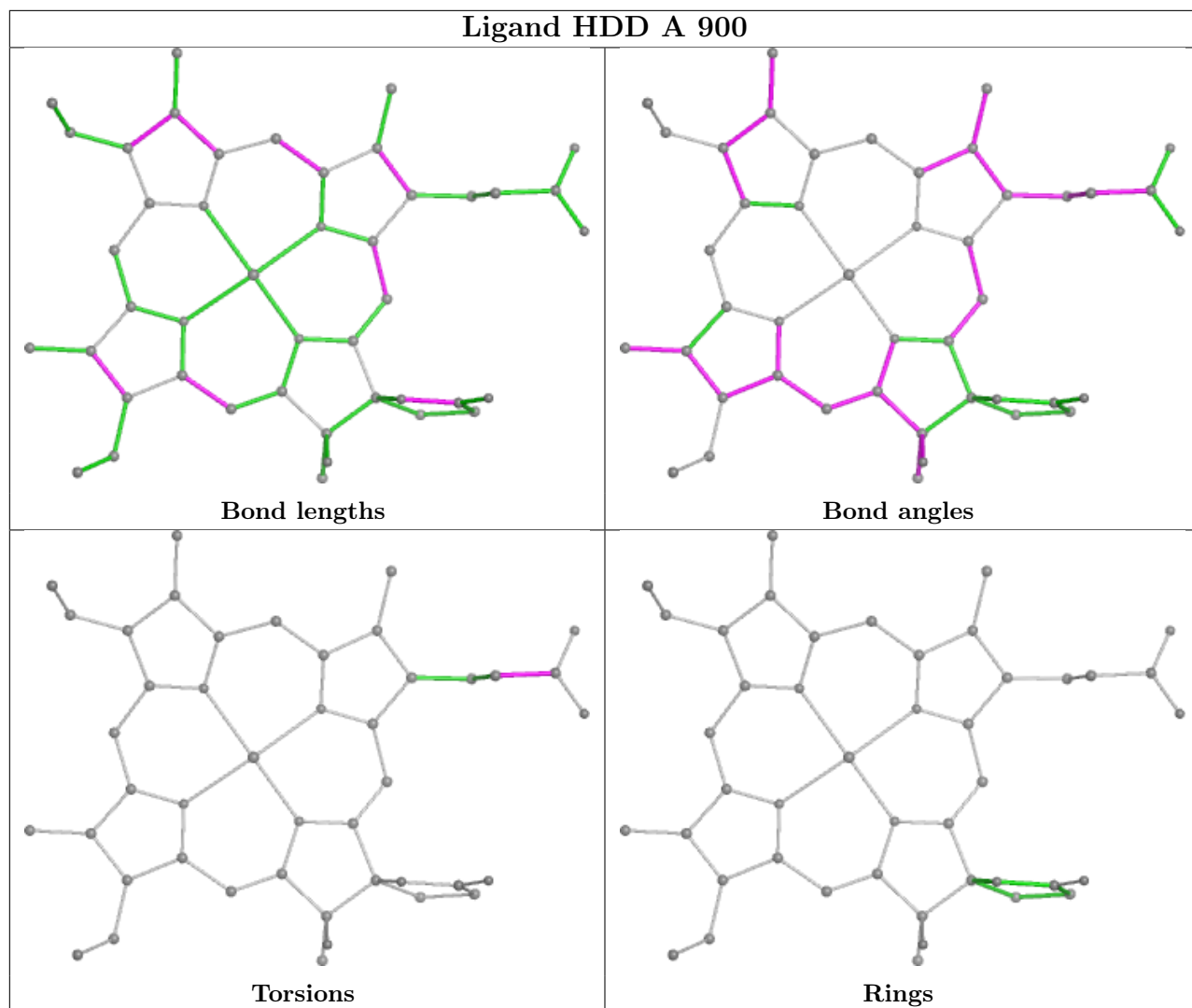
4 monomers are involved in 12 short contacts:

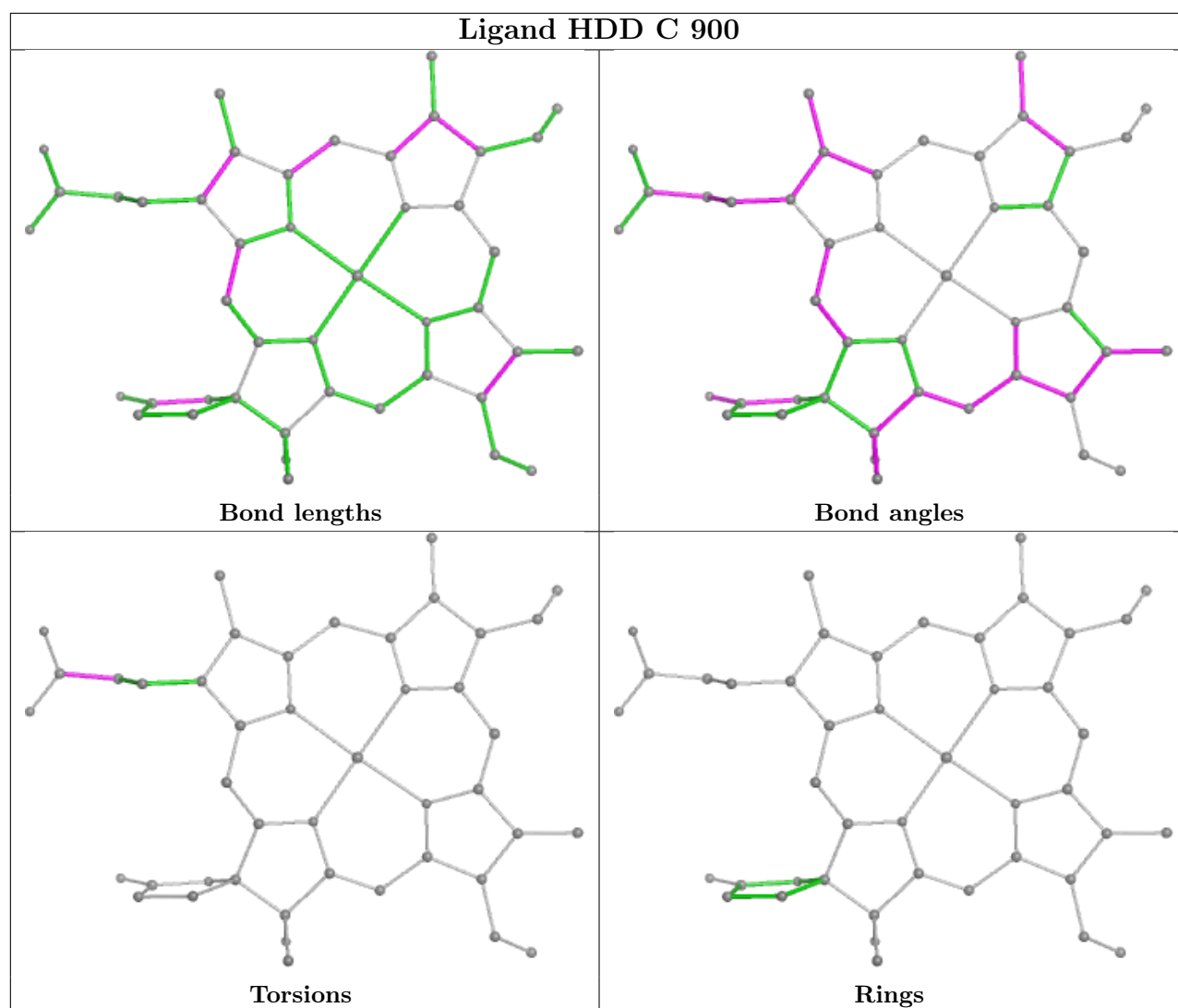
Mol	Chain	Res	Type	Clashes	Symm-Clashes
2	D	900	HDD	3	0
2	B	900	HDD	3	0
2	A	900	HDD	3	0
2	C	900	HDD	3	0

The following is a two-dimensional graphical depiction of Mogul quality analysis of bond lengths, bond angles, torsion angles, and ring geometry for all instances of the Ligand of Interest. In addition, ligands with molecular weight > 250 and outliers as shown on the validation Tables will also be included. For torsion angles, if less than 5% of the Mogul distribution of torsion angles is within 10 degrees of the torsion angle in question, then that torsion angle is considered an outlier. Any bond that is central to one or more torsion angles identified as an outlier by Mogul will be highlighted in the graph. For rings, the root-mean-square deviation (RMSD) between the ring in question and similar rings identified by Mogul is calculated over all ring torsion angles. If the average RMSD is greater than 60 degrees and the minimal RMSD between the ring in question and any Mogul-identified rings is also greater than 60 degrees, then that ring is considered an outlier. The outliers are highlighted in purple. The color gray indicates Mogul did not find sufficient equivalents in the CSD to analyse the geometry.









5.7 Other polymers [i](#)

There are no such residues in this entry.

5.8 Polymer linkage issues [i](#)

There are no chain breaks in this entry.

6 Fit of model and data

6.1 Protein, DNA and RNA chains

In the following table, the column labelled ‘#RSRZ > 2’ contains the number (and percentage) of RSRZ outliers, followed by percent RSRZ outliers for the chain as percentile scores relative to all X-ray entries and entries of similar resolution. The OWAB column contains the minimum, median, 95th percentile and maximum values of the occupancy-weighted average B-factor per residue. The column labelled ‘Q < 0.9’ lists the number of (and percentage) of residues with an average occupancy less than 0.9.

Mol	Chain	Analysed	<RSRZ>	#RSRZ>2	OWAB(Å ²)	Q<0.9
1	A	674/719 (93%)	-0.41	6 (0%) 84 87	11, 20, 34, 50	0
1	B	673/719 (93%)	-0.40	7 (1%) 82 86	11, 21, 36, 47	0
1	C	672/719 (93%)	-0.40	11 (1%) 72 77	12, 20, 40, 91	0
1	D	672/719 (93%)	-0.34	16 (2%) 59 66	12, 20, 47, 77	0
All	All	2691/2876 (93%)	-0.39	40 (1%) 73 79	11, 20, 38, 91	0

All (40) RSRZ outliers are listed below:

Mol	Chain	Res	Type	RSRZ
1	C	672	GLU	6.8
1	D	672	GLU	5.6
1	A	698	SER	4.6
1	D	618	ALA	3.9
1	D	698	SER	3.6
1	C	671	GLU	3.4
1	C	698	SER	3.2
1	C	590[A]	GLU	3.2
1	C	618	ALA	3.1
1	D	611	ASP	3.0
1	D	671	GLU	3.0
1	C	674	VAL	3.0
1	A	318	TYR	2.9
1	D	654	GLU	2.9
1	D	565	ASP	2.9
1	D	590[A]	GLU	2.6
1	D	660	ASP	2.6
1	B	698	SER	2.6
1	C	611	ASP	2.5
1	B	517	GLY	2.5
1	B	590[A]	GLU	2.5

Continued on next page...

Continued from previous page...

Mol	Chain	Res	Type	RSRZ
1	B	492	GLU	2.4
1	A	675	ASP	2.4
1	B	318	TYR	2.4
1	C	649	GLY	2.4
1	D	561	SER	2.4
1	D	674	VAL	2.4
1	D	653	SER	2.3
1	B	576[A]	LYS	2.3
1	D	657	ASP	2.3
1	A	561	SER	2.2
1	C	660	ASP	2.2
1	C	654	GLU	2.1
1	A	664	ASP	2.1
1	B	664	ASP	2.1
1	A	560	GLU	2.1
1	D	649	GLY	2.1
1	D	491	GLU	2.0
1	C	318	TYR	2.0
1	D	676[A]	MET	2.0

6.2 Non-standard residues in protein, DNA, RNA chains [i](#)

There are no non-standard protein/DNA/RNA residues in this entry.

6.3 Carbohydrates [i](#)

There are no monosaccharides in this entry.

6.4 Ligands [i](#)

In the following table, the Atoms column lists the number of modelled atoms in the group and the number defined in the chemical component dictionary. The B-factors column lists the minimum, median, 95th percentile and maximum values of B factors of atoms in the group. The column labelled 'Q< 0.9' lists the number of atoms with occupancy less than 0.9.

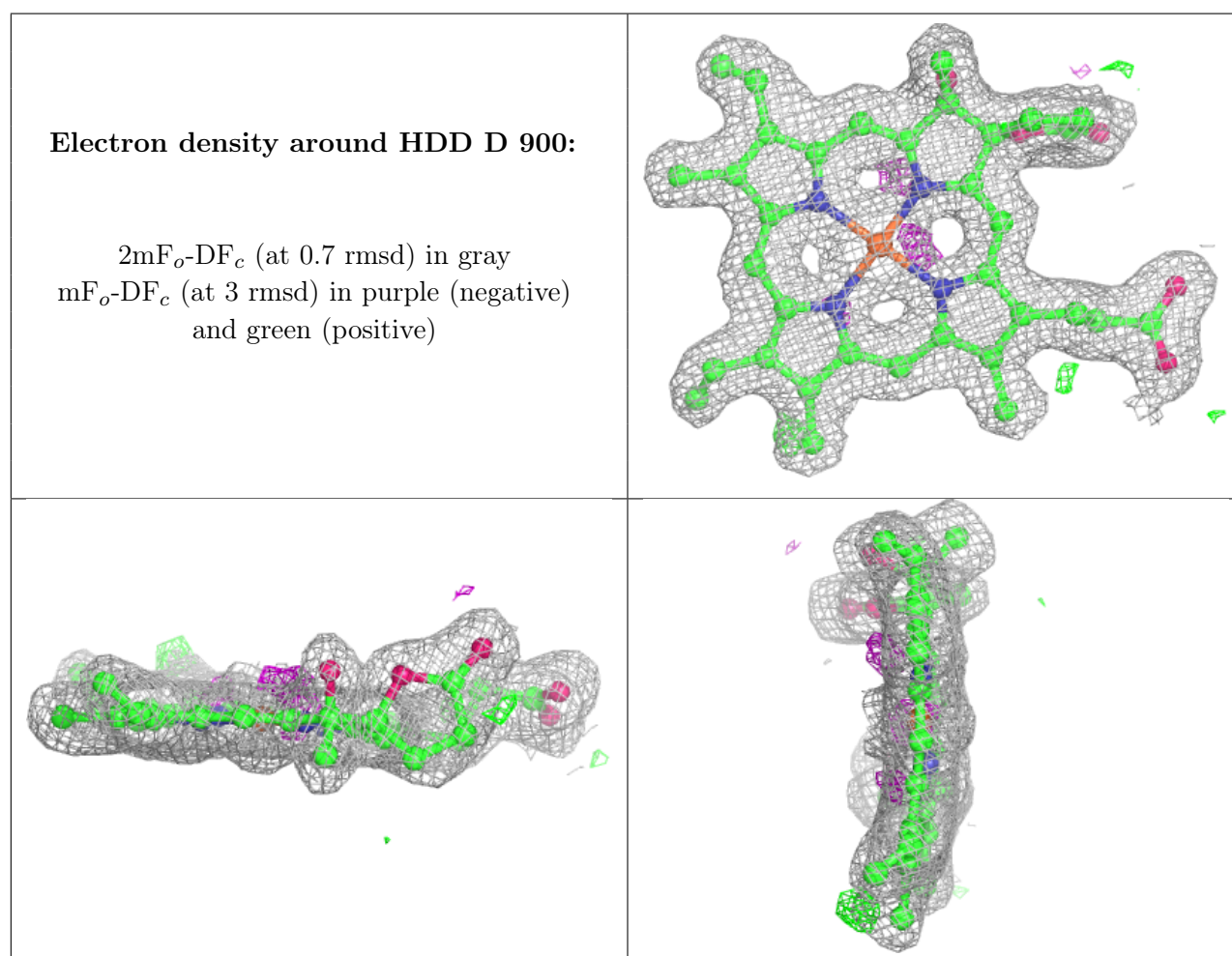
Mol	Type	Chain	Res	Atoms	RSCC	RSR	B-factors(Å ²)	Q<0.9
3	CA	A	1700	1/1	0.95	0.07	17,17,17,17	1
3	CA	C	1700	1/1	0.96	0.06	22,22,22,22	0
3	CA	D	1700	1/1	0.96	0.08	15,15,15,15	1
2	HDD	D	900	44/44	0.97	0.09	14,15,18,21	0

Continued on next page...

Continued from previous page...

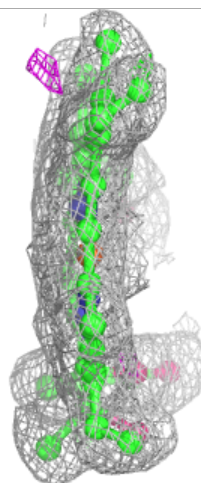
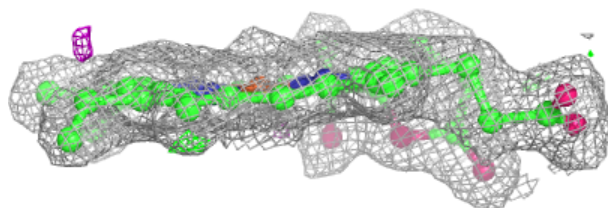
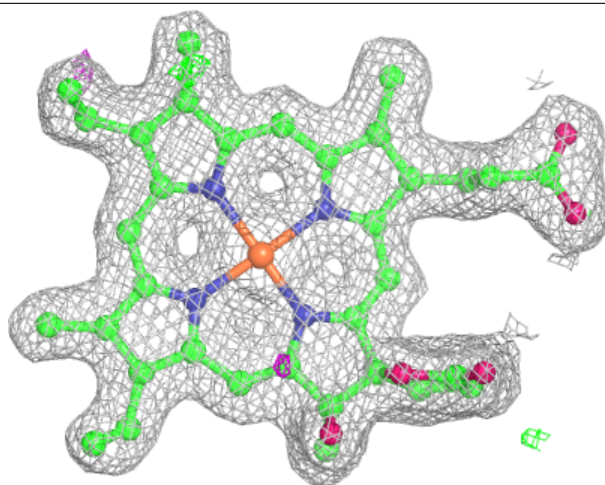
Mol	Type	Chain	Res	Atoms	RSCC	RSR	B-factors(\AA^2)	Q<0.9
2	HDD	A	900	44/44	0.97	0.08	14,16,18,21	0
3	CA	A	1701	1/1	0.97	0.04	21,21,21,21	1
3	CA	B	1700	1/1	0.97	0.07	18,18,18,18	1
2	HDD	B	900	44/44	0.97	0.09	12,15,19,21	0
2	HDD	C	900	44/44	0.97	0.10	13,15,18,19	0

The following is a graphical depiction of the model fit to experimental electron density of all instances of the Ligand of Interest. In addition, ligands with molecular weight > 250 and outliers as shown on the geometry validation Tables will also be included. Each fit is shown from different orientation to approximate a three-dimensional view.



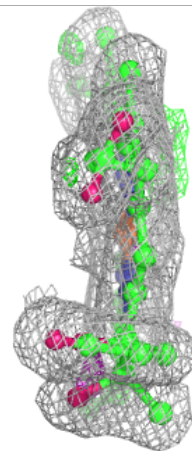
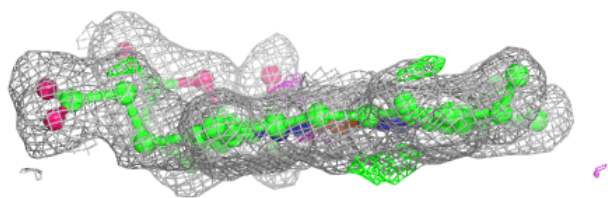
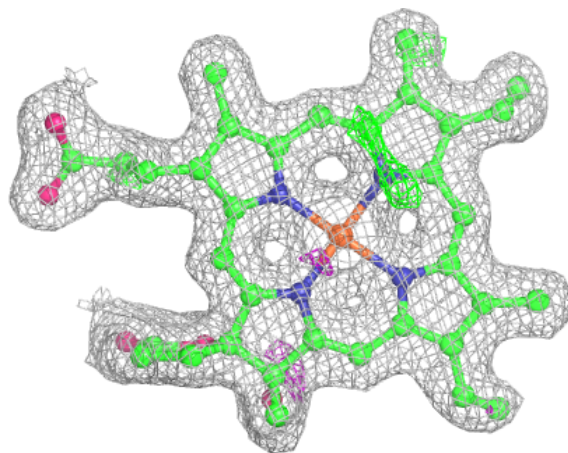
Electron density around HDD A 900:

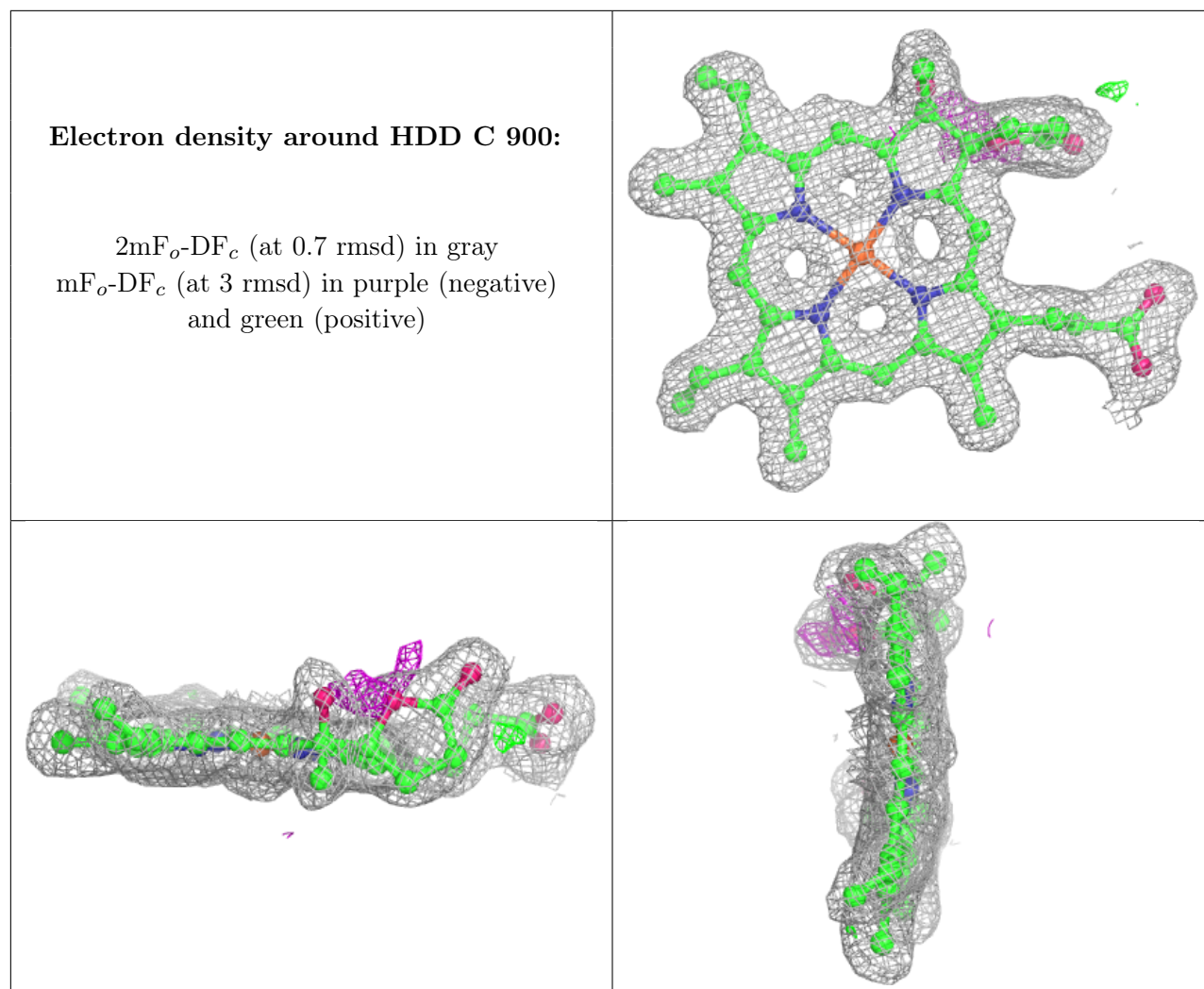
$2mF_o-DF_c$ (at 0.7 rmsd) in gray
 mF_o-DF_c (at 3 rmsd) in purple (negative)
and green (positive)



Electron density around HDD B 900:

$2mF_o-DF_c$ (at 0.7 rmsd) in gray
 mF_o-DF_c (at 3 rmsd) in purple (negative)
and green (positive)





6.5 Other polymers [\(i\)](#)

There are no such residues in this entry.