



wwPDB X-ray Structure Validation Summary Report ⓘ

Nov 7, 2023 – 02:05 PM JST

PDB ID : 5B4W
Title : Crystal structure of Plexin inhibitor complex
Authors : Matsunaga, Y.; Kitago, Y.; Arimori, T.; Takagi, J.
Deposited on : 2016-04-19
Resolution : 2.60 Å(reported)

This is a wwPDB X-ray Structure Validation Summary Report for a publicly released PDB entry.

We welcome your comments at validation@mail.wwpdb.org

A user guide is available at

<https://www.wwpdb.org/validation/2017/XrayValidationReportHelp>

with specific help available everywhere you see the ⓘ symbol.

The types of validation reports are described at

<http://www.wwpdb.org/validation/2017/FAQs#types>.

The following versions of software and data (see [references ⓘ](#)) were used in the production of this report:

MolProbity : 4.02b-467
Mogul : 1.8.5 (274361), CSD as541be (2020)
Xtriage (Phenix) : 1.13
EDS : 2.36
Percentile statistics : 20191225.v01 (using entries in the PDB archive December 25th 2019)
Refmac : 5.8.0158
CCP4 : 7.0.044 (Gargrove)
Ideal geometry (proteins) : Engh & Huber (2001)
Ideal geometry (DNA, RNA) : Parkinson et al. (1996)
Validation Pipeline (wwPDB-VP) : 2.36

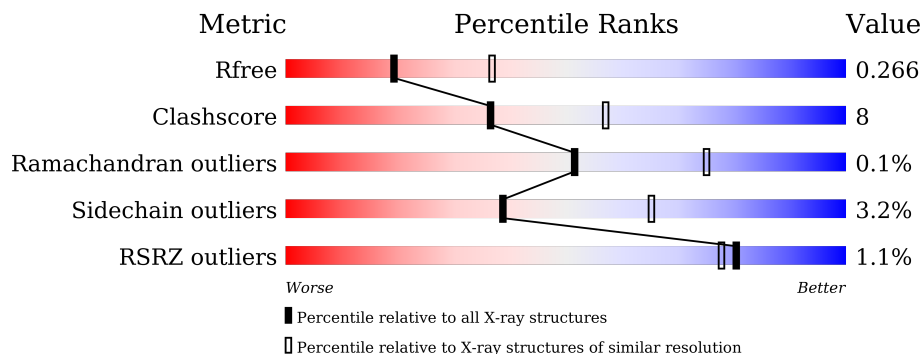
1 Overall quality at a glance

The following experimental techniques were used to determine the structure:

X-RAY DIFFRACTION

The reported resolution of this entry is 2.60 Å.

Percentile scores (ranging between 0-100) for global validation metrics of the entry are shown in the following graphic. The table shows the number of entries on which the scores are based.




Metric	Whole archive (#Entries)	Similar resolution (#Entries, resolution range(Å))
R_{free}	130704	3163 (2.60-2.60)
Clashscore	141614	3518 (2.60-2.60)
Ramachandran outliers	138981	3455 (2.60-2.60)
Sidechain outliers	138945	3455 (2.60-2.60)
RSRZ outliers	127900	3104 (2.60-2.60)

The table below summarises the geometric issues observed across the polymeric chains and their fit to the electron density. The red, orange, yellow and green segments of the lower bar indicate the fraction of residues that contain outliers for ≥ 3 , 2, 1 and 0 types of geometric quality criteria respectively. A grey segment represents the fraction of residues that are not modelled. The numeric value for each fraction is indicated below the corresponding segment, with a dot representing fractions $\leq 5\%$. The upper red bar (where present) indicates the fraction of residues that have poor fit to the electron density. The numeric value is given above the bar.

Mol	Chain	Length	Quality of chain
1	A	579	
1	B	579	
1	C	579	
1	D	579	
1	E	579	
1	F	579	

Continued on next page...

Continued from previous page...

Mol	Chain	Length	Quality of chain
2	G	18	
2	H	18	
2	I	18	
2	J	18	
2	K	18	
2	L	18	

2 Entry composition [i](#)

There are 4 unique types of molecules in this entry. The entry contains 21235 atoms, of which 0 are hydrogens and 0 are deuteriums.

In the tables below, the ZeroOcc column contains the number of atoms modelled with zero occupancy, the AltConf column contains the number of residues with at least one atom in alternate conformation and the Trace column contains the number of residues modelled with at most 2 atoms.

- Molecule 1 is a protein called Plexin-B1.

Mol	Chain	Residues	Atoms					ZeroOcc	AltConf	Trace
			Total	C	N	O	S			
1	A	434	3298	2075	571	638	14	0	0	0
1	B	434	3298	2075	571	638	14	0	0	0
1	C	442	3355	2109	585	647	14	0	0	0
1	D	436	3304	2082	570	638	14	0	0	0
1	E	478	3647	2289	640	697	21	0	0	0
1	F	438	3323	2088	578	643	14	0	0	0

There are 378 discrepancies between the modelled and reference sequences:

Chain	Residue	Modelled	Actual	Comment	Reference
A	-12	MET	-	See Sequence details	UNP O43157
A	-11	ASP	-	See Sequence details	UNP O43157
A	-10	SER	-	See Sequence details	UNP O43157
A	-9	LYS	-	See Sequence details	UNP O43157
A	-8	GLY	-	See Sequence details	UNP O43157
A	-7	SER	-	See Sequence details	UNP O43157
A	-6	SER	-	See Sequence details	UNP O43157
A	-5	GLN	-	See Sequence details	UNP O43157
A	-4	LYS	-	See Sequence details	UNP O43157
A	-3	GLY	-	See Sequence details	UNP O43157
A	-2	SER	-	See Sequence details	UNP O43157
A	-1	ARG	-	See Sequence details	UNP O43157
A	0	LEU	-	See Sequence details	UNP O43157
A	1	LEU	-	See Sequence details	UNP O43157
A	2	LEU	-	See Sequence details	UNP O43157
A	3	LEU	-	See Sequence details	UNP O43157
A	4	LEU	-	See Sequence details	UNP O43157

Continued on next page...

Continued from previous page...

Chain	Residue	Modelled	Actual	Comment	Reference
A	5	VAL	-	See Sequence details	UNP O43157
A	6	VAL	-	See Sequence details	UNP O43157
A	7	SER	-	See Sequence details	UNP O43157
A	8	ASN	-	See Sequence details	UNP O43157
A	9	LEU	-	See Sequence details	UNP O43157
A	10	LEU	-	See Sequence details	UNP O43157
A	11	LEU	-	See Sequence details	UNP O43157
A	12	CYS	-	See Sequence details	UNP O43157
A	13	GLN	-	See Sequence details	UNP O43157
A	14	GLY	-	See Sequence details	UNP O43157
A	15	VAL	-	See Sequence details	UNP O43157
A	16	VAL	-	See Sequence details	UNP O43157
A	17	SER	-	See Sequence details	UNP O43157
A	18	GLY	-	See Sequence details	UNP O43157
A	19	SER	-	See Sequence details	UNP O43157
A	536	THR	-	expression tag	UNP O43157
A	537	ARG	-	expression tag	UNP O43157
A	538	GLU	-	expression tag	UNP O43157
A	539	ASN	-	expression tag	UNP O43157
A	540	LEU	-	expression tag	UNP O43157
A	541	TYR	-	expression tag	UNP O43157
A	542	PHE	-	expression tag	UNP O43157
A	543	GLN	-	expression tag	UNP O43157
A	544	GLY	-	expression tag	UNP O43157
A	545	LYS	-	expression tag	UNP O43157
A	546	ASP	-	expression tag	UNP O43157
A	547	GLY	-	expression tag	UNP O43157
A	548	GLY	-	expression tag	UNP O43157
A	549	GLY	-	expression tag	UNP O43157
A	550	GLY	-	expression tag	UNP O43157
A	551	GLY	-	expression tag	UNP O43157
A	552	SER	-	expression tag	UNP O43157
A	553	HIS	-	expression tag	UNP O43157
A	554	MET	-	expression tag	UNP O43157
A	555	GLY	-	expression tag	UNP O43157
A	556	VAL	-	expression tag	UNP O43157
A	557	ALA	-	expression tag	UNP O43157
A	558	MET	-	expression tag	UNP O43157
A	559	PRO	-	expression tag	UNP O43157
A	560	GLY	-	expression tag	UNP O43157
A	561	ALA	-	expression tag	UNP O43157
A	562	GLU	-	expression tag	UNP O43157

Continued on next page...

Continued from previous page...

Chain	Residue	Modelled	Actual	Comment	Reference
A	563	ASP	-	expression tag	UNP O43157
A	564	ASP	-	expression tag	UNP O43157
A	565	VAL	-	expression tag	UNP O43157
A	566	VAL	-	expression tag	UNP O43157
B	-12	MET	-	See Sequence details	UNP O43157
B	-11	ASP	-	See Sequence details	UNP O43157
B	-10	SER	-	See Sequence details	UNP O43157
B	-9	LYS	-	See Sequence details	UNP O43157
B	-8	GLY	-	See Sequence details	UNP O43157
B	-7	SER	-	See Sequence details	UNP O43157
B	-6	SER	-	See Sequence details	UNP O43157
B	-5	GLN	-	See Sequence details	UNP O43157
B	-4	LYS	-	See Sequence details	UNP O43157
B	-3	GLY	-	See Sequence details	UNP O43157
B	-2	SER	-	See Sequence details	UNP O43157
B	-1	ARG	-	See Sequence details	UNP O43157
B	0	LEU	-	See Sequence details	UNP O43157
B	1	LEU	-	See Sequence details	UNP O43157
B	2	LEU	-	See Sequence details	UNP O43157
B	3	LEU	-	See Sequence details	UNP O43157
B	4	LEU	-	See Sequence details	UNP O43157
B	5	VAL	-	See Sequence details	UNP O43157
B	6	VAL	-	See Sequence details	UNP O43157
B	7	SER	-	See Sequence details	UNP O43157
B	8	ASN	-	See Sequence details	UNP O43157
B	9	LEU	-	See Sequence details	UNP O43157
B	10	LEU	-	See Sequence details	UNP O43157
B	11	LEU	-	See Sequence details	UNP O43157
B	12	CYS	-	See Sequence details	UNP O43157
B	13	GLN	-	See Sequence details	UNP O43157
B	14	GLY	-	See Sequence details	UNP O43157
B	15	VAL	-	See Sequence details	UNP O43157
B	16	VAL	-	See Sequence details	UNP O43157
B	17	SER	-	See Sequence details	UNP O43157
B	18	GLY	-	See Sequence details	UNP O43157
B	19	SER	-	See Sequence details	UNP O43157
B	536	THR	-	expression tag	UNP O43157
B	537	ARG	-	expression tag	UNP O43157
B	538	GLU	-	expression tag	UNP O43157
B	539	ASN	-	expression tag	UNP O43157
B	540	LEU	-	expression tag	UNP O43157
B	541	TYR	-	expression tag	UNP O43157

Continued on next page...

Continued from previous page...

Chain	Residue	Modelled	Actual	Comment	Reference
B	542	PHE	-	expression tag	UNP O43157
B	543	GLN	-	expression tag	UNP O43157
B	544	GLY	-	expression tag	UNP O43157
B	545	LYS	-	expression tag	UNP O43157
B	546	ASP	-	expression tag	UNP O43157
B	547	GLY	-	expression tag	UNP O43157
B	548	GLY	-	expression tag	UNP O43157
B	549	GLY	-	expression tag	UNP O43157
B	550	GLY	-	expression tag	UNP O43157
B	551	GLY	-	expression tag	UNP O43157
B	552	SER	-	expression tag	UNP O43157
B	553	HIS	-	expression tag	UNP O43157
B	554	MET	-	expression tag	UNP O43157
B	555	GLY	-	expression tag	UNP O43157
B	556	VAL	-	expression tag	UNP O43157
B	557	ALA	-	expression tag	UNP O43157
B	558	MET	-	expression tag	UNP O43157
B	559	PRO	-	expression tag	UNP O43157
B	560	GLY	-	expression tag	UNP O43157
B	561	ALA	-	expression tag	UNP O43157
B	562	GLU	-	expression tag	UNP O43157
B	563	ASP	-	expression tag	UNP O43157
B	564	ASP	-	expression tag	UNP O43157
B	565	VAL	-	expression tag	UNP O43157
B	566	VAL	-	expression tag	UNP O43157
C	-12	MET	-	See Sequence details	UNP O43157
C	-11	ASP	-	See Sequence details	UNP O43157
C	-10	SER	-	See Sequence details	UNP O43157
C	-9	LYS	-	See Sequence details	UNP O43157
C	-8	GLY	-	See Sequence details	UNP O43157
C	-7	SER	-	See Sequence details	UNP O43157
C	-6	SER	-	See Sequence details	UNP O43157
C	-5	GLN	-	See Sequence details	UNP O43157
C	-4	LYS	-	See Sequence details	UNP O43157
C	-3	GLY	-	See Sequence details	UNP O43157
C	-2	SER	-	See Sequence details	UNP O43157
C	-1	ARG	-	See Sequence details	UNP O43157
C	0	LEU	-	See Sequence details	UNP O43157
C	1	LEU	-	See Sequence details	UNP O43157
C	2	LEU	-	See Sequence details	UNP O43157
C	3	LEU	-	See Sequence details	UNP O43157
C	4	LEU	-	See Sequence details	UNP O43157

Continued on next page...

Continued from previous page...

Chain	Residue	Modelled	Actual	Comment	Reference
C	5	VAL	-	See Sequence details	UNP O43157
C	6	VAL	-	See Sequence details	UNP O43157
C	7	SER	-	See Sequence details	UNP O43157
C	8	ASN	-	See Sequence details	UNP O43157
C	9	LEU	-	See Sequence details	UNP O43157
C	10	LEU	-	See Sequence details	UNP O43157
C	11	LEU	-	See Sequence details	UNP O43157
C	12	CYS	-	See Sequence details	UNP O43157
C	13	GLN	-	See Sequence details	UNP O43157
C	14	GLY	-	See Sequence details	UNP O43157
C	15	VAL	-	See Sequence details	UNP O43157
C	16	VAL	-	See Sequence details	UNP O43157
C	17	SER	-	See Sequence details	UNP O43157
C	18	GLY	-	See Sequence details	UNP O43157
C	19	SER	-	See Sequence details	UNP O43157
C	536	THR	-	expression tag	UNP O43157
C	537	ARG	-	expression tag	UNP O43157
C	538	GLU	-	expression tag	UNP O43157
C	539	ASN	-	expression tag	UNP O43157
C	540	LEU	-	expression tag	UNP O43157
C	541	TYR	-	expression tag	UNP O43157
C	542	PHE	-	expression tag	UNP O43157
C	543	GLN	-	expression tag	UNP O43157
C	544	GLY	-	expression tag	UNP O43157
C	545	LYS	-	expression tag	UNP O43157
C	546	ASP	-	expression tag	UNP O43157
C	547	GLY	-	expression tag	UNP O43157
C	548	GLY	-	expression tag	UNP O43157
C	549	GLY	-	expression tag	UNP O43157
C	550	GLY	-	expression tag	UNP O43157
C	551	GLY	-	expression tag	UNP O43157
C	552	SER	-	expression tag	UNP O43157
C	553	HIS	-	expression tag	UNP O43157
C	554	MET	-	expression tag	UNP O43157
C	555	GLY	-	expression tag	UNP O43157
C	556	VAL	-	expression tag	UNP O43157
C	557	ALA	-	expression tag	UNP O43157
C	558	MET	-	expression tag	UNP O43157
C	559	PRO	-	expression tag	UNP O43157
C	560	GLY	-	expression tag	UNP O43157
C	561	ALA	-	expression tag	UNP O43157
C	562	GLU	-	expression tag	UNP O43157

Continued on next page...

Continued from previous page...

Chain	Residue	Modelled	Actual	Comment	Reference
C	563	ASP	-	expression tag	UNP O43157
C	564	ASP	-	expression tag	UNP O43157
C	565	VAL	-	expression tag	UNP O43157
C	566	VAL	-	expression tag	UNP O43157
D	-12	MET	-	See Sequence details	UNP O43157
D	-11	ASP	-	See Sequence details	UNP O43157
D	-10	SER	-	See Sequence details	UNP O43157
D	-9	LYS	-	See Sequence details	UNP O43157
D	-8	GLY	-	See Sequence details	UNP O43157
D	-7	SER	-	See Sequence details	UNP O43157
D	-6	SER	-	See Sequence details	UNP O43157
D	-5	GLN	-	See Sequence details	UNP O43157
D	-4	LYS	-	See Sequence details	UNP O43157
D	-3	GLY	-	See Sequence details	UNP O43157
D	-2	SER	-	See Sequence details	UNP O43157
D	-1	ARG	-	See Sequence details	UNP O43157
D	0	LEU	-	See Sequence details	UNP O43157
D	1	LEU	-	See Sequence details	UNP O43157
D	2	LEU	-	See Sequence details	UNP O43157
D	3	LEU	-	See Sequence details	UNP O43157
D	4	LEU	-	See Sequence details	UNP O43157
D	5	VAL	-	See Sequence details	UNP O43157
D	6	VAL	-	See Sequence details	UNP O43157
D	7	SER	-	See Sequence details	UNP O43157
D	8	ASN	-	See Sequence details	UNP O43157
D	9	LEU	-	See Sequence details	UNP O43157
D	10	LEU	-	See Sequence details	UNP O43157
D	11	LEU	-	See Sequence details	UNP O43157
D	12	CYS	-	See Sequence details	UNP O43157
D	13	GLN	-	See Sequence details	UNP O43157
D	14	GLY	-	See Sequence details	UNP O43157
D	15	VAL	-	See Sequence details	UNP O43157
D	16	VAL	-	See Sequence details	UNP O43157
D	17	SER	-	See Sequence details	UNP O43157
D	18	GLY	-	See Sequence details	UNP O43157
D	19	SER	-	See Sequence details	UNP O43157
D	536	THR	-	expression tag	UNP O43157
D	537	ARG	-	expression tag	UNP O43157
D	538	GLU	-	expression tag	UNP O43157
D	539	ASN	-	expression tag	UNP O43157
D	540	LEU	-	expression tag	UNP O43157
D	541	TYR	-	expression tag	UNP O43157

Continued on next page...

Continued from previous page...

Chain	Residue	Modelled	Actual	Comment	Reference
D	542	PHE	-	expression tag	UNP O43157
D	543	GLN	-	expression tag	UNP O43157
D	544	GLY	-	expression tag	UNP O43157
D	545	LYS	-	expression tag	UNP O43157
D	546	ASP	-	expression tag	UNP O43157
D	547	GLY	-	expression tag	UNP O43157
D	548	GLY	-	expression tag	UNP O43157
D	549	GLY	-	expression tag	UNP O43157
D	550	GLY	-	expression tag	UNP O43157
D	551	GLY	-	expression tag	UNP O43157
D	552	SER	-	expression tag	UNP O43157
D	553	HIS	-	expression tag	UNP O43157
D	554	MET	-	expression tag	UNP O43157
D	555	GLY	-	expression tag	UNP O43157
D	556	VAL	-	expression tag	UNP O43157
D	557	ALA	-	expression tag	UNP O43157
D	558	MET	-	expression tag	UNP O43157
D	559	PRO	-	expression tag	UNP O43157
D	560	GLY	-	expression tag	UNP O43157
D	561	ALA	-	expression tag	UNP O43157
D	562	GLU	-	expression tag	UNP O43157
D	563	ASP	-	expression tag	UNP O43157
D	564	ASP	-	expression tag	UNP O43157
D	565	VAL	-	expression tag	UNP O43157
D	566	VAL	-	expression tag	UNP O43157
E	-12	MET	-	See Sequence details	UNP O43157
E	-11	ASP	-	See Sequence details	UNP O43157
E	-10	SER	-	See Sequence details	UNP O43157
E	-9	LYS	-	See Sequence details	UNP O43157
E	-8	GLY	-	See Sequence details	UNP O43157
E	-7	SER	-	See Sequence details	UNP O43157
E	-6	SER	-	See Sequence details	UNP O43157
E	-5	GLN	-	See Sequence details	UNP O43157
E	-4	LYS	-	See Sequence details	UNP O43157
E	-3	GLY	-	See Sequence details	UNP O43157
E	-2	SER	-	See Sequence details	UNP O43157
E	-1	ARG	-	See Sequence details	UNP O43157
E	0	LEU	-	See Sequence details	UNP O43157
E	1	LEU	-	See Sequence details	UNP O43157
E	2	LEU	-	See Sequence details	UNP O43157
E	3	LEU	-	See Sequence details	UNP O43157
E	4	LEU	-	See Sequence details	UNP O43157

Continued on next page...

Continued from previous page...

Chain	Residue	Modelled	Actual	Comment	Reference
E	5	VAL	-	See Sequence details	UNP O43157
E	6	VAL	-	See Sequence details	UNP O43157
E	7	SER	-	See Sequence details	UNP O43157
E	8	ASN	-	See Sequence details	UNP O43157
E	9	LEU	-	See Sequence details	UNP O43157
E	10	LEU	-	See Sequence details	UNP O43157
E	11	LEU	-	See Sequence details	UNP O43157
E	12	CYS	-	See Sequence details	UNP O43157
E	13	GLN	-	See Sequence details	UNP O43157
E	14	GLY	-	See Sequence details	UNP O43157
E	15	VAL	-	See Sequence details	UNP O43157
E	16	VAL	-	See Sequence details	UNP O43157
E	17	SER	-	See Sequence details	UNP O43157
E	18	GLY	-	See Sequence details	UNP O43157
E	19	SER	-	See Sequence details	UNP O43157
E	536	THR	-	expression tag	UNP O43157
E	537	ARG	-	expression tag	UNP O43157
E	538	GLU	-	expression tag	UNP O43157
E	539	ASN	-	expression tag	UNP O43157
E	540	LEU	-	expression tag	UNP O43157
E	541	TYR	-	expression tag	UNP O43157
E	542	PHE	-	expression tag	UNP O43157
E	543	GLN	-	expression tag	UNP O43157
E	544	GLY	-	expression tag	UNP O43157
E	545	LYS	-	expression tag	UNP O43157
E	546	ASP	-	expression tag	UNP O43157
E	547	GLY	-	expression tag	UNP O43157
E	548	GLY	-	expression tag	UNP O43157
E	549	GLY	-	expression tag	UNP O43157
E	550	GLY	-	expression tag	UNP O43157
E	551	GLY	-	expression tag	UNP O43157
E	552	SER	-	expression tag	UNP O43157
E	553	HIS	-	expression tag	UNP O43157
E	554	MET	-	expression tag	UNP O43157
E	555	GLY	-	expression tag	UNP O43157
E	556	VAL	-	expression tag	UNP O43157
E	557	ALA	-	expression tag	UNP O43157
E	558	MET	-	expression tag	UNP O43157
E	559	PRO	-	expression tag	UNP O43157
E	560	GLY	-	expression tag	UNP O43157
E	561	ALA	-	expression tag	UNP O43157
E	562	GLU	-	expression tag	UNP O43157

Continued on next page...

Continued from previous page...

Chain	Residue	Modelled	Actual	Comment	Reference
E	563	ASP	-	expression tag	UNP O43157
E	564	ASP	-	expression tag	UNP O43157
E	565	VAL	-	expression tag	UNP O43157
E	566	VAL	-	expression tag	UNP O43157
F	-12	MET	-	See Sequence details	UNP O43157
F	-11	ASP	-	See Sequence details	UNP O43157
F	-10	SER	-	See Sequence details	UNP O43157
F	-9	LYS	-	See Sequence details	UNP O43157
F	-8	GLY	-	See Sequence details	UNP O43157
F	-7	SER	-	See Sequence details	UNP O43157
F	-6	SER	-	See Sequence details	UNP O43157
F	-5	GLN	-	See Sequence details	UNP O43157
F	-4	LYS	-	See Sequence details	UNP O43157
F	-3	GLY	-	See Sequence details	UNP O43157
F	-2	SER	-	See Sequence details	UNP O43157
F	-1	ARG	-	See Sequence details	UNP O43157
F	0	LEU	-	See Sequence details	UNP O43157
F	1	LEU	-	See Sequence details	UNP O43157
F	2	LEU	-	See Sequence details	UNP O43157
F	3	LEU	-	See Sequence details	UNP O43157
F	4	LEU	-	See Sequence details	UNP O43157
F	5	VAL	-	See Sequence details	UNP O43157
F	6	VAL	-	See Sequence details	UNP O43157
F	7	SER	-	See Sequence details	UNP O43157
F	8	ASN	-	See Sequence details	UNP O43157
F	9	LEU	-	See Sequence details	UNP O43157
F	10	LEU	-	See Sequence details	UNP O43157
F	11	LEU	-	See Sequence details	UNP O43157
F	12	CYS	-	See Sequence details	UNP O43157
F	13	GLN	-	See Sequence details	UNP O43157
F	14	GLY	-	See Sequence details	UNP O43157
F	15	VAL	-	See Sequence details	UNP O43157
F	16	VAL	-	See Sequence details	UNP O43157
F	17	SER	-	See Sequence details	UNP O43157
F	18	GLY	-	See Sequence details	UNP O43157
F	19	SER	-	See Sequence details	UNP O43157
F	536	THR	-	expression tag	UNP O43157
F	537	ARG	-	expression tag	UNP O43157
F	538	GLU	-	expression tag	UNP O43157
F	539	ASN	-	expression tag	UNP O43157
F	540	LEU	-	expression tag	UNP O43157
F	541	TYR	-	expression tag	UNP O43157

Continued on next page...

Continued from previous page...

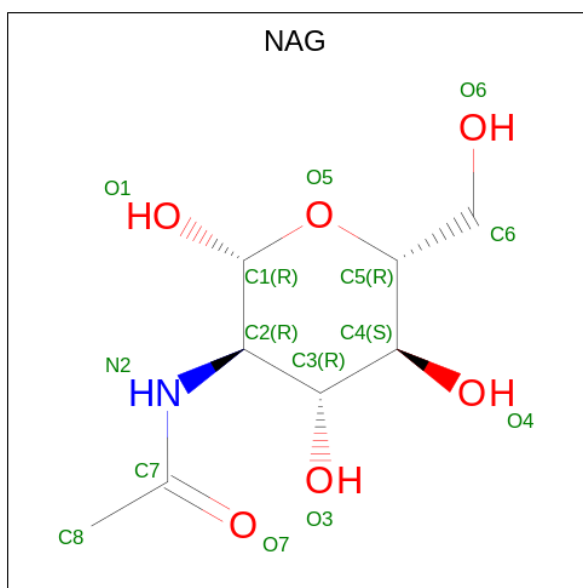
Chain	Residue	Modelled	Actual	Comment	Reference
F	542	PHE	-	expression tag	UNP O43157
F	543	GLN	-	expression tag	UNP O43157
F	544	GLY	-	expression tag	UNP O43157
F	545	LYS	-	expression tag	UNP O43157
F	546	ASP	-	expression tag	UNP O43157
F	547	GLY	-	expression tag	UNP O43157
F	548	GLY	-	expression tag	UNP O43157
F	549	GLY	-	expression tag	UNP O43157
F	550	GLY	-	expression tag	UNP O43157
F	551	GLY	-	expression tag	UNP O43157
F	552	SER	-	expression tag	UNP O43157
F	553	HIS	-	expression tag	UNP O43157
F	554	MET	-	expression tag	UNP O43157
F	555	GLY	-	expression tag	UNP O43157
F	556	VAL	-	expression tag	UNP O43157
F	557	ALA	-	expression tag	UNP O43157
F	558	MET	-	expression tag	UNP O43157
F	559	PRO	-	expression tag	UNP O43157
F	560	GLY	-	expression tag	UNP O43157
F	561	ALA	-	expression tag	UNP O43157
F	562	GLU	-	expression tag	UNP O43157
F	563	ASP	-	expression tag	UNP O43157
F	564	ASP	-	expression tag	UNP O43157
F	565	VAL	-	expression tag	UNP O43157
F	566	VAL	-	expression tag	UNP O43157

- Molecule 2 is a protein called Synthesized cyclic peptide.

Mol	Chain	Residues	Atoms					ZeroOcc	AltConf	Trace
2	G	18	Total	C	N	O	S	0	0	1
			144	93	29	21	1			
2	H	18	Total	C	N	O	S	0	0	1
			144	93	29	21	1			
2	I	18	Total	C	N	O	S	0	0	1
			144	93	29	21	1			
2	J	18	Total	C	N	O	S	0	0	1
			144	93	29	21	1			
2	K	18	Total	C	N	O	S	0	0	1
			144	93	29	21	1			
2	L	18	Total	C	N	O	S	0	0	1
			144	93	29	21	1			

- Molecule 3 is 2-acetamido-2-deoxy-beta-D-glucopyranose (three-letter code: NAG) (formula:

C₈H₁₅NO₆).



Mol	Chain	Residues	Atoms				ZeroOcc	AltConf
3	A	1	Total	C	N	O	0	0
			14	8	1	5		
3	B	1	Total	C	N	O	0	0
			14	8	1	5		
3	B	1	Total	C	N	O	0	0
			14	8	1	5		
3	C	1	Total	C	N	O	0	0
			14	8	1	5		
3	D	1	Total	C	N	O	0	0
			14	8	1	5		
3	E	1	Total	C	N	O	0	0
			14	8	1	5		
3	F	1	Total	C	N	O	0	0
			14	8	1	5		

- Molecule 4 is water.

Mol	Chain	Residues	Atoms		ZeroOcc	AltConf
4	A	3	Total	O	0	0
			3	3		
4	B	16	Total	O	0	0
			16	16		
4	C	8	Total	O	0	0
			8	8		
4	D	1	Total	O	0	0
			1	1		

Continued on next page...

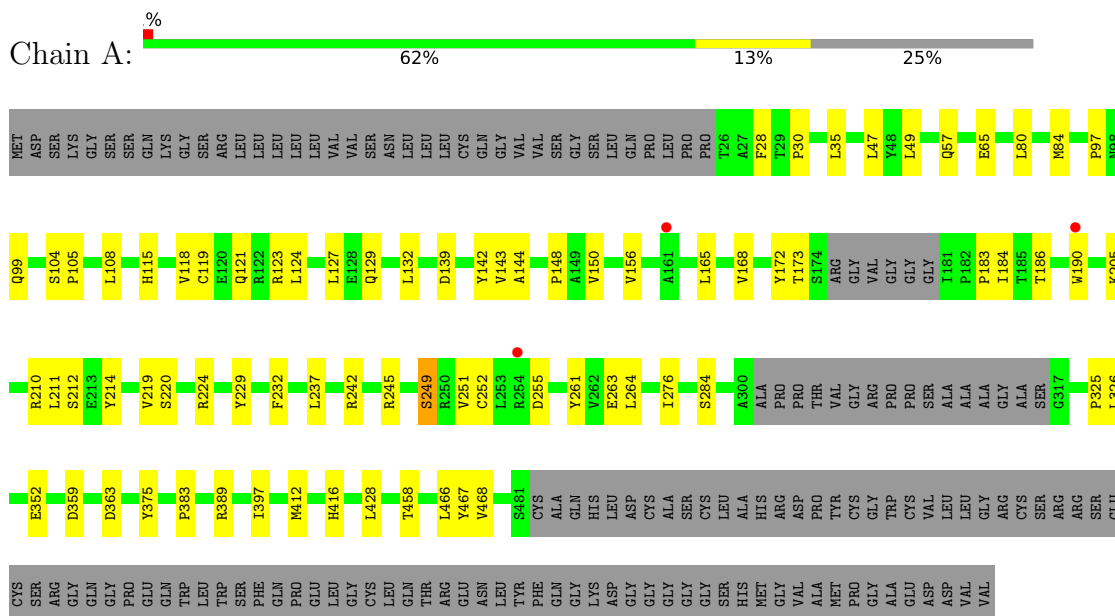
Continued from previous page...

Mol	Chain	Residues	Atoms	ZeroOcc	AltConf
4	E	7	Total O 7 7	0	0
4	F	10	Total O 10 10	0	0
4	H	1	Total O 1 1	0	0
4	K	2	Total O 2 2	0	0

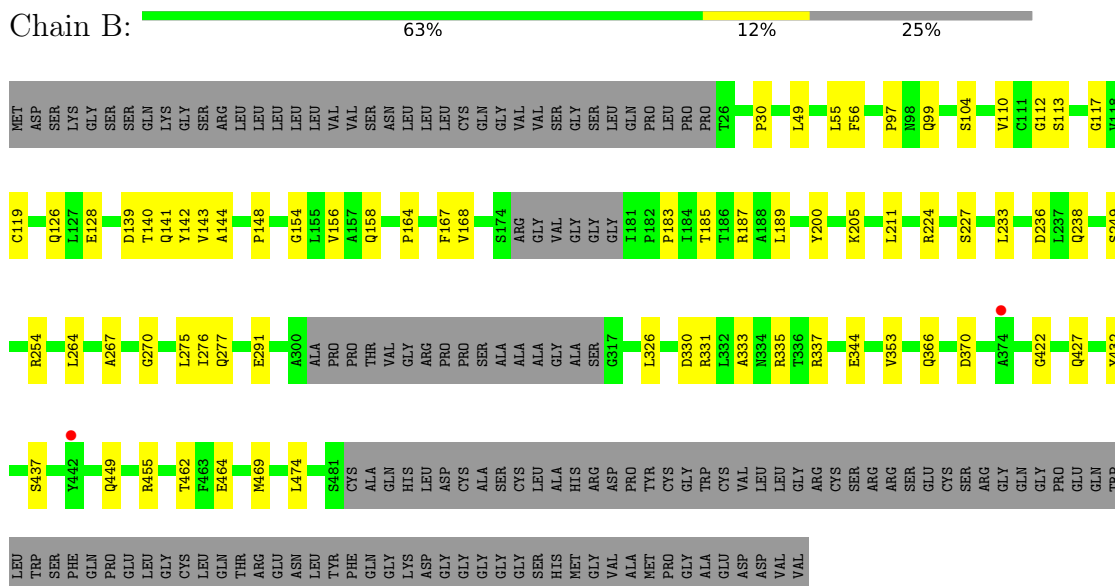
3 Residue-property plots [i](#)

These plots are drawn for all protein, RNA, DNA and oligosaccharide chains in the entry. The first graphic for a chain summarises the proportions of the various outlier classes displayed in the second graphic. The second graphic shows the sequence view annotated by issues in geometry and electron density. Residues are color-coded according to the number of geometric quality criteria for which they contain at least one outlier: green = 0, yellow = 1, orange = 2 and red = 3 or more. A red dot above a residue indicates a poor fit to the electron density ($RSRZ > 2$). Stretches of 2 or more consecutive residues without any outlier are shown as a green connector. Residues present in the sample, but not in the model, are shown in grey.

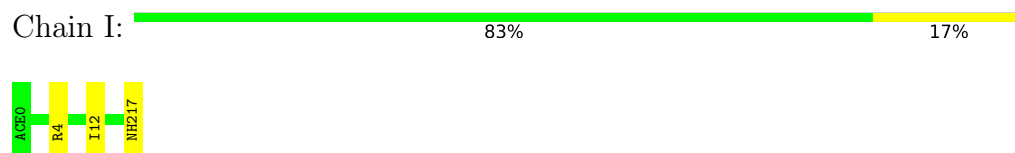
- Molecule 1: Plexin-B1



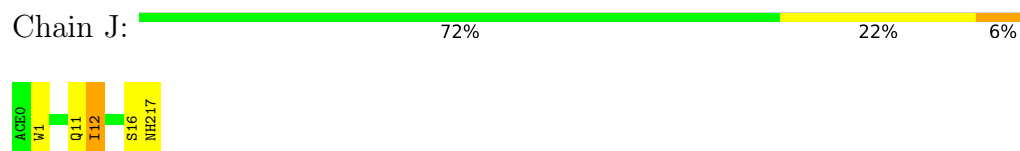
- Molecule 1: Plexin-B1



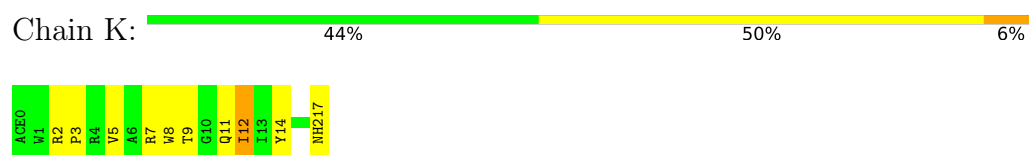
- Molecule 2: Synthesized cyclic peptide



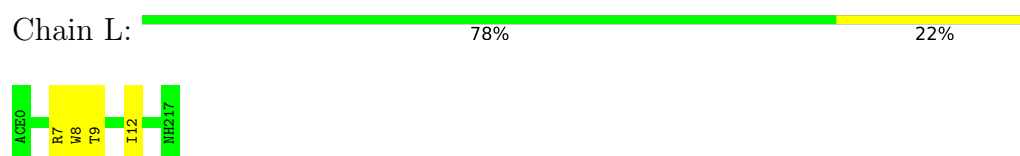
- Molecule 2: Synthesized cyclic peptide



- Molecule 2: Synthesized cyclic peptide



- Molecule 2: Synthesized cyclic peptide



4 Data and refinement statistics

Property	Value	Source
Space group	P 1 21 1	Depositor
Cell constants a, b, c, α , β , γ	92.43Å 217.92Å 106.47Å 90.00° 115.30° 90.00°	Depositor
Resolution (Å)	40.80 – 2.60 45.64 – 2.55	Depositor EDS
% Data completeness (in resolution range)	97.1 (40.80-2.60) 94.6 (45.64-2.55)	Depositor EDS
R_{merge}	0.15	Depositor
R_{sym}	(Not available)	Depositor
$\langle I/\sigma(I) \rangle$ ¹	1.55 (at 2.54Å)	Xtrriage
Refinement program	PHENIX (dev_2341: ???)	Depositor
R, R_{free}	0.225 , 0.265 0.226 , 0.266	Depositor DCC
R_{free} test set	5840 reflections (5.01%)	wwPDB-VP
Wilson B-factor (Å ²)	48.6	Xtrriage
Anisotropy	0.541	Xtrriage
Bulk solvent k_{sol} (e/Å ³), B_{sol} (Å ²)	0.32 , 41.2	EDS
L-test for twinning ²	$\langle L \rangle = 0.48$, $\langle L^2 \rangle = 0.30$	Xtrriage
Estimated twinning fraction	0.029 for h,-k,-h-l	Xtrriage
F_o, F_c correlation	0.92	EDS
Total number of atoms	21235	wwPDB-VP
Average B, all atoms (Å ²)	54.0	wwPDB-VP

Xtrriage's analysis on translational NCS is as follows: *The largest off-origin peak in the Patterson function is 2.95% of the height of the origin peak. No significant pseudotranslation is detected.*

¹Intensities estimated from amplitudes.

²Theoretical values of $\langle |L| \rangle$, $\langle L^2 \rangle$ for acentric reflections are 0.5, 0.333 respectively for untwinned datasets, and 0.375, 0.2 for perfectly twinned datasets.

5 Model quality [i](#)

5.1 Standard geometry [i](#)

Bond lengths and bond angles in the following residue types are not validated in this section: DTR, ACE, NAG, NH2

The Z score for a bond length (or angle) is the number of standard deviations the observed value is removed from the expected value. A bond length (or angle) with $|Z| > 5$ is considered an outlier worth inspection. RMSZ is the root-mean-square of all Z scores of the bond lengths (or angles).

Mol	Chain	Bond lengths		Bond angles	
		RMSZ	# Z >5	RMSZ	# Z >5
1	A	0.41	0/3377	0.60	0/4614
1	B	0.41	0/3377	0.62	0/4614
1	C	0.41	0/3435	0.62	0/4692
1	D	0.38	0/3385	0.61	1/4627 (0.0%)
1	E	0.42	0/3736	0.61	1/5098 (0.0%)
1	F	0.41	0/3402	0.61	0/4646
2	G	0.39	0/129	0.59	0/174
2	H	0.34	0/129	0.56	0/174
2	I	0.47	0/129	0.57	0/174
2	J	0.38	0/129	0.60	0/174
2	K	0.49	0/129	0.65	0/174
2	L	0.44	0/129	0.53	0/174
All	All	0.41	0/21486	0.61	2/29335 (0.0%)

There are no bond length outliers.

All (2) bond angle outliers are listed below:

Mol	Chain	Res	Type	Atoms	Z	Observed(°)	Ideal(°)
1	D	398	LEU	CA-CB-CG	5.08	126.98	115.30
1	E	224	ARG	NE-CZ-NH2	-5.05	117.78	120.30

There are no chirality outliers.

There are no planarity outliers.

5.2 Too-close contacts [i](#)

In the following table, the Non-H and H(model) columns list the number of non-hydrogen atoms and hydrogen atoms in the chain respectively. The H(added) column lists the number of hydrogen

atoms added and optimized by MolProbity. The Clashes column lists the number of clashes within the asymmetric unit, whereas Symm-Clashes lists symmetry-related clashes.

Mol	Chain	Non-H	H(model)	H(added)	Clashes	Symm-Clashes
1	A	3298	0	3180	42	0
1	B	3298	0	3179	43	0
1	C	3355	0	3236	44	0
1	D	3304	0	3187	82	0
1	E	3647	0	3496	64	1
1	F	3323	0	3204	45	1
2	G	144	0	140	5	0
2	H	144	0	140	7	0
2	I	144	0	140	2	0
2	J	144	0	140	4	0
2	K	144	0	140	9	0
2	L	144	0	140	2	0
3	A	14	0	13	0	0
3	B	28	0	26	3	0
3	C	14	0	13	1	0
3	D	14	0	13	0	0
3	E	14	0	13	0	0
3	F	14	0	13	1	0
4	A	3	0	0	0	0
4	B	16	0	0	2	0
4	C	8	0	0	1	0
4	D	1	0	0	0	0
4	E	7	0	0	0	0
4	F	10	0	0	0	0
4	H	1	0	0	0	0
4	K	2	0	0	0	0
All	All	21235	0	20413	329	1

The all-atom clashscore is defined as the number of clashes found per 1000 atoms (including hydrogen atoms). The all-atom clashscore for this structure is 8.

The worst 5 of 329 close contacts within the same asymmetric unit are listed below, sorted by their clash magnitude.

Atom-1	Atom-2	Interatomic distance (Å)	Clash overlap (Å)
1:E:393:GLU:HG2	1:F:393:GLU:HG2	1.53	0.90
1:F:252:CYS:HB2	1:F:255:ASP:HB2	1.55	0.87
1:C:224:ARG:NH2	1:C:330:ASP:OD2	2.13	0.82
1:F:224:ARG:NH2	1:F:330:ASP:OD2	2.12	0.82
1:C:38:LEU:HD11	1:C:47:LEU:HD22	1.61	0.82

All (1) symmetry-related close contacts are listed below. The label for Atom-2 includes the symmetry operator and encoded unit-cell translations to be applied.

Atom-1	Atom-2	Interatomic distance (Å)	Clash overlap (Å)
1:E:86:ASP:OD1	1:F:122:ARG:NH2[1_656]	2.01	0.19

5.3 Torsion angles [\(i\)](#)

5.3.1 Protein backbone [\(i\)](#)

In the following table, the Percentiles column shows the percent Ramachandran outliers of the chain as a percentile score with respect to all X-ray entries followed by that with respect to entries of similar resolution.

The Analysed column shows the number of residues for which the backbone conformation was analysed, and the total number of residues.

Mol	Chain	Analysed	Favoured	Allowed	Outliers	Percentiles	
1	A	428/579 (74%)	413 (96%)	15 (4%)	0	100	100
1	B	428/579 (74%)	414 (97%)	14 (3%)	0	100	100
1	C	432/579 (75%)	418 (97%)	14 (3%)	0	100	100
1	D	428/579 (74%)	408 (95%)	20 (5%)	0	100	100
1	E	470/579 (81%)	448 (95%)	21 (4%)	1 (0%)	47	71
1	F	432/579 (75%)	416 (96%)	15 (4%)	1 (0%)	47	71
2	G	15/18 (83%)	13 (87%)	2 (13%)	0	100	100
2	H	15/18 (83%)	14 (93%)	1 (7%)	0	100	100
2	I	15/18 (83%)	14 (93%)	1 (7%)	0	100	100
2	J	15/18 (83%)	13 (87%)	1 (7%)	1 (7%)	1	1
2	K	15/18 (83%)	14 (93%)	1 (7%)	0	100	100
2	L	15/18 (83%)	14 (93%)	1 (7%)	0	100	100
All	All	2708/3582 (76%)	2599 (96%)	106 (4%)	3 (0%)	51	75

All (3) Ramachandran outliers are listed below:

Mol	Chain	Res	Type
1	E	370	ASP
2	J	16	SER
1	F	380	ASP

5.3.2 Protein sidechains [i](#)

In the following table, the Percentiles column shows the percent sidechain outliers of the chain as a percentile score with respect to all X-ray entries followed by that with respect to entries of similar resolution.

The Analysed column shows the number of residues for which the sidechain conformation was analysed, and the total number of residues.

Mol	Chain	Analysed	Rotameric	Outliers	Percentiles
1	A	352/464 (76%)	345 (98%)	7 (2%)	55 78
1	B	352/464 (76%)	348 (99%)	4 (1%)	73 88
1	C	357/464 (77%)	346 (97%)	11 (3%)	40 66
1	D	353/464 (76%)	342 (97%)	11 (3%)	40 66
1	E	389/464 (84%)	373 (96%)	16 (4%)	30 56
1	F	354/464 (76%)	340 (96%)	14 (4%)	31 57
2	G	13/13 (100%)	11 (85%)	2 (15%)	2 4
2	H	13/13 (100%)	12 (92%)	1 (8%)	13 25
2	I	13/13 (100%)	12 (92%)	1 (8%)	13 25
2	J	13/13 (100%)	12 (92%)	1 (8%)	13 25
2	K	13/13 (100%)	12 (92%)	1 (8%)	13 25
2	L	13/13 (100%)	11 (85%)	2 (15%)	2 4
All	All	2235/2862 (78%)	2164 (97%)	71 (3%)	39 65

5 of 71 residues with a non-rotameric sidechain are listed below:

Mol	Chain	Res	Type
1	F	327	ASP
1	F	360	VAL
2	H	12	ILE
1	D	100	LEU
1	D	84	MET

Sometimes sidechains can be flipped to improve hydrogen bonding and reduce clashes. All (1) such sidechains are listed below:

Mol	Chain	Res	Type
1	A	416	HIS

5.3.3 RNA [i](#)

There are no RNA molecules in this entry.

5.4 Non-standard residues in protein, DNA, RNA chains [i](#)

6 non-standard protein/DNA/RNA residues are modelled in this entry.

There are no bond length outliers.

There are no bond angle outliers.

There are no chirality outliers.

There are no torsion outliers.

There are no ring outliers.

No monomer is involved in short contacts.

5.5 Carbohydrates [i](#)

There are no monosaccharides in this entry.

5.6 Ligand geometry [i](#)

7 ligands are modelled in this entry.

In the following table, the Counts columns list the number of bonds (or angles) for which Mogul statistics could be retrieved, the number of bonds (or angles) that are observed in the model and the number of bonds (or angles) that are defined in the Chemical Component Dictionary. The Link column lists molecule types, if any, to which the group is linked. The Z score for a bond length (or angle) is the number of standard deviations the observed value is removed from the expected value. A bond length (or angle) with $|Z| > 2$ is considered an outlier worth inspection. RMSZ is the root-mean-square of all Z scores of the bond lengths (or angles).

Mol	Type	Chain	Res	Link	Bond lengths			Bond angles		
					Counts	RMSZ	$\# Z > 2$	Counts	RMSZ	$\# Z > 2$
3	NAG	B	601	1	14,14,15	0.47	0	17,19,21	0.67	1 (5%)
3	NAG	F	601	1	14,14,15	0.31	0	17,19,21	0.75	1 (5%)
3	NAG	B	602	1	14,14,15	0.50	0	17,19,21	0.80	1 (5%)
3	NAG	A	601	1	14,14,15	0.80	1 (7%)	17,19,21	0.72	1 (5%)
3	NAG	D	601	1	14,14,15	0.44	0	17,19,21	0.53	0
3	NAG	C	601	1	14,14,15	0.41	0	17,19,21	0.89	1 (5%)
3	NAG	E	601	1	14,14,15	0.33	0	17,19,21	0.78	1 (5%)

In the following table, the Chirals column lists the number of chiral outliers, the number of chiral centers analysed, the number of these observed in the model and the number defined in the Chemical Component Dictionary. Similar counts are reported in the Torsion and Rings columns. '-' means no outliers of that kind were identified.

Mol	Type	Chain	Res	Link	Chirals	Torsions	Rings
3	NAG	B	601	1	-	0/6/23/26	0/1/1/1
3	NAG	F	601	1	-	0/6/23/26	0/1/1/1
3	NAG	B	602	1	-	0/6/23/26	0/1/1/1
3	NAG	A	601	1	-	2/6/23/26	0/1/1/1
3	NAG	D	601	1	-	0/6/23/26	0/1/1/1
3	NAG	C	601	1	-	2/6/23/26	0/1/1/1
3	NAG	E	601	1	-	0/6/23/26	0/1/1/1

All (1) bond length outliers are listed below:

Mol	Chain	Res	Type	Atoms	Z	Observed(Å)	Ideal(Å)
3	A	601	NAG	O5-C1	-2.92	1.39	1.43

The worst 5 of 6 bond angle outliers are listed below:

Mol	Chain	Res	Type	Atoms	Z	Observed(°)	Ideal(°)
3	C	601	NAG	C1-O5-C5	3.04	116.31	112.19
3	E	601	NAG	C1-O5-C5	2.70	115.85	112.19
3	F	601	NAG	C1-O5-C5	2.64	115.77	112.19
3	A	601	NAG	C1-O5-C5	2.44	115.49	112.19
3	B	602	NAG	C1-O5-C5	2.40	115.45	112.19

There are no chirality outliers.

All (4) torsion outliers are listed below:

Mol	Chain	Res	Type	Atoms
3	C	601	NAG	O5-C5-C6-O6
3	C	601	NAG	C4-C5-C6-O6
3	A	601	NAG	O5-C5-C6-O6
3	A	601	NAG	C4-C5-C6-O6

There are no ring outliers.

4 monomers are involved in 5 short contacts:

Mol	Chain	Res	Type	Clashes	Symm-Clashes
3	B	601	NAG	1	0
3	F	601	NAG	1	0

Continued on next page...

Continued from previous page...

Mol	Chain	Res	Type	Clashes	Symm-Clashes
3	B	602	NAG	2	0
3	C	601	NAG	1	0

5.7 Other polymers [i](#)

There are no such residues in this entry.

5.8 Polymer linkage issues [i](#)

There are no chain breaks in this entry.

6 Fit of model and data [i](#)

6.1 Protein, DNA and RNA chains [i](#)

In the following table, the column labelled ‘#RSRZ> 2’ contains the number (and percentage) of RSRZ outliers, followed by percent RSRZ outliers for the chain as percentile scores relative to all X-ray entries and entries of similar resolution. The OWAB column contains the minimum, median, 95th percentile and maximum values of the occupancy-weighted average B-factor per residue. The column labelled ‘Q< 0.9’ lists the number of (and percentage) of residues with an average occupancy less than 0.9.

Mol	Chain	Analysed	<RSRZ>	#RSRZ>2	OWAB(Å ²)	Q<0.9
1	A	434/579 (74%)	-0.26	3 (0%) 87 86	30, 50, 73, 118	0
1	B	434/579 (74%)	-0.29	2 (0%) 91 89	28, 46, 71, 88	0
1	C	442/579 (76%)	-0.23	3 (0%) 87 86	30, 51, 76, 90	0
1	D	436/579 (75%)	0.07	9 (2%) 63 58	38, 65, 97, 124	0
1	E	478/579 (82%)	-0.14	8 (1%) 70 66	31, 51, 79, 133	0
1	F	438/579 (75%)	-0.13	4 (0%) 84 82	31, 57, 84, 109	0
2	G	15/18 (83%)	-0.66	0 100 100	40, 46, 56, 56	0
2	H	15/18 (83%)	-0.54	0 100 100	37, 40, 50, 51	0
2	I	15/18 (83%)	-0.51	0 100 100	33, 42, 50, 52	0
2	J	15/18 (83%)	-0.19	0 100 100	51, 59, 79, 96	0
2	K	15/18 (83%)	-0.43	0 100 100	29, 31, 43, 60	0
2	L	15/18 (83%)	-0.14	0 100 100	45, 50, 68, 79	0
All	All	2752/3582 (76%)	-0.17	29 (1%) 80 78	28, 52, 82, 133	0

The worst 5 of 29 RSRZ outliers are listed below:

Mol	Chain	Res	Type	RSRZ
1	F	316	SER	5.4
1	D	161	ALA	5.2
1	A	254	ARG	4.2
1	E	176	GLY	3.6
1	E	372	LEU	3.6

6.2 Non-standard residues in protein, DNA, RNA chains [i](#)

In the following table, the Atoms column lists the number of modelled atoms in the group and the number defined in the chemical component dictionary. The B-factors column lists the minimum,

median, 95th percentile and maximum values of B factors of atoms in the group. The column labelled 'Q< 0.9' lists the number of atoms with occupancy less than 0.9.

Mol	Type	Chain	Res	Atoms	RSCC	RSR	B-factors(Å ²)	Q<0.9
2	DTR	G	1	14/15	0.93	0.14	55,59,60,60	0
2	DTR	J	1	14/15	0.93	0.15	59,62,64,66	0
2	DTR	I	1	14/15	0.96	0.15	43,48,50,50	0
2	DTR	H	1	14/15	0.96	0.13	44,47,49,49	0
2	DTR	K	1	14/15	0.97	0.12	43,47,49,49	0
2	DTR	L	1	14/15	0.97	0.22	51,57,60,60	0

6.3 Carbohydrates [i](#)

There are no monosaccharides in this entry.

6.4 Ligands [i](#)

In the following table, the Atoms column lists the number of modelled atoms in the group and the number defined in the chemical component dictionary. The B-factors column lists the minimum, median, 95th percentile and maximum values of B factors of atoms in the group. The column labelled 'Q< 0.9' lists the number of atoms with occupancy less than 0.9.

Mol	Type	Chain	Res	Atoms	RSCC	RSR	B-factors(Å ²)	Q<0.9
3	NAG	B	601	14/15	0.78	0.18	68,71,73,74	0
3	NAG	D	601	14/15	0.89	0.13	72,80,82,82	0
3	NAG	C	601	14/15	0.92	0.15	54,56,58,58	0
3	NAG	A	601	14/15	0.94	0.16	53,67,72,72	0
3	NAG	F	601	14/15	0.94	0.15	61,62,65,68	0
3	NAG	E	601	14/15	0.96	0.14	47,51,54,55	0
3	NAG	B	602	14/15	0.96	0.12	50,58,64,64	0

6.5 Other polymers [i](#)

There are no such residues in this entry.