



# Full wwPDB X-ray Structure Validation Report ⓘ

Aug 22, 2023 – 12:19 PM EDT

PDB ID : 3B6A  
Title : Crystal structure of the Streptomyces coelicolor TetR family protein ActR in complex with actinorhodin  
Authors : Willems, A.R.; Junop, M.S.  
Deposited on : 2007-10-28  
Resolution : 3.05 Å(reported)

This is a Full wwPDB X-ray Structure Validation Report for a publicly released PDB entry.

We welcome your comments at [validation@mail.wwpdb.org](mailto:validation@mail.wwpdb.org)

A user guide is available at

<https://www.wwpdb.org/validation/2017/XrayValidationReportHelp>

with specific help available everywhere you see the ⓘ symbol.

The types of validation reports are described at

<http://www.wwpdb.org/validation/2017/FAQs#types>.

---

The following versions of software and data (see [references ⓘ](#)) were used in the production of this report:

MolProbity : 4.02b-467  
Mogul : 1.8.5 (274361), CSD as541be (2020)  
Xtriage (Phenix) : 1.13  
EDS : 2.35  
buster-report : 1.1.7 (2018)  
Percentile statistics : 20191225.v01 (using entries in the PDB archive December 25th 2019)  
Refmac : 5.8.0158  
CCP4 : 7.0.044 (Gargrove)  
Ideal geometry (proteins) : Engh & Huber (2001)  
Ideal geometry (DNA, RNA) : Parkinson et al. (1996)  
Validation Pipeline (wwPDB-VP) : 2.35

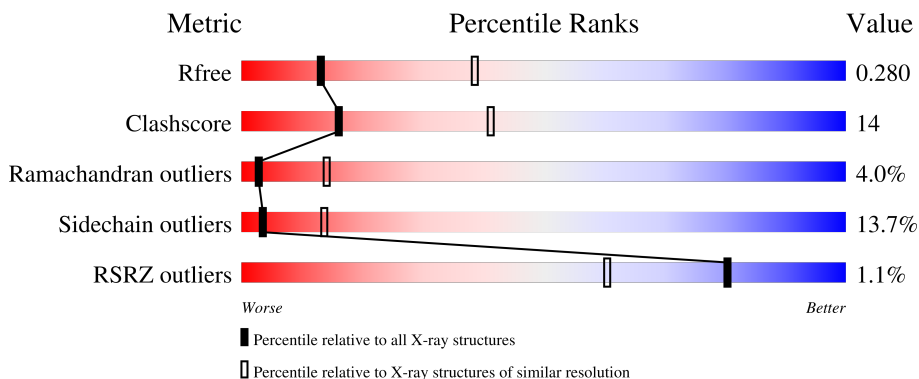
# 1 Overall quality at a glance

The following experimental techniques were used to determine the structure:

*X-RAY DIFFRACTION*

The reported resolution of this entry is 3.05 Å.

Percentile scores (ranging between 0-100) for global validation metrics of the entry are shown in the following graphic. The table shows the number of entries on which the scores are based.



Metric	Whole archive (#Entries)	Similar resolution (#Entries, resolution range(Å))
$R_{free}$	130704	1754 (3.10-3.02)
Clashscore	141614	1864 (3.10-3.02)
Ramachandran outliers	138981	1794 (3.10-3.02)
Sidechain outliers	138945	1793 (3.10-3.02)
RSRZ outliers	127900	1713 (3.10-3.02)

The table below summarises the geometric issues observed across the polymeric chains and their fit to the electron density. The red, orange, yellow and green segments of the lower bar indicate the fraction of residues that contain outliers for  $\geq 3$ , 2, 1 and 0 types of geometric quality criteria respectively. A grey segment represents the fraction of residues that are not modelled. The numeric value for each fraction is indicated below the corresponding segment, with a dot representing fractions  $\leq 5\%$ . The upper red bar (where present) indicates the fraction of residues that have poor fit to the electron density. The numeric value is given above the bar.

Mol	Chain	Length	Quality of chain
1	A	234	 2% 56% 30% 5% 9%
1	B	234	 % 62% 20% 7% 11%
1	C	234	 % 56% 29% 6% 9%
1	D	234	 % 62% 21% 6% 11%
1	E	234	 2% 58% 29% 5% 9%

*Continued on next page...*

Continued from previous page...

Mol	Chain	Length	Quality of chain
1	F	234	<p>%</p> <p>62% 20% 7% 11%</p>
1	G	234	<p>56% 31% 9%</p>
1	H	234	<p>%</p> <p>59% 24% 7% 11%</p>

The following table lists non-polymeric compounds, carbohydrate monomers and non-standard residues in protein, DNA, RNA chains that are outliers for geometric or electron-density-fit criteria:

Mol	Type	Chain	Res	Chirality	Geometry	Clashes	Electron density
2	ZCT	B	1	-	-	-	X
2	ZCT	D	1	-	-	-	X
2	ZCT	E	1	-	-	-	X
2	ZCT	F	1	-	-	-	X
2	ZCT	G	1	-	-	-	X
2	ZCT	H	1	-	-	-	X

## 2 Entry composition [i](#)

There are 2 unique types of molecules in this entry. The entry contains 13188 atoms, of which 32 are hydrogens and 0 are deuteriums.

In the tables below, the ZeroOcc column contains the number of atoms modelled with zero occupancy, the AltConf column contains the number of residues with at least one atom in alternate conformation and the Trace column contains the number of residues modelled with at most 2 atoms.

- Molecule 1 is a protein called ActR protein.

Mol	Chain	Residues	Atoms					ZeroOcc	AltConf	Trace
			Total	C	N	O	S			
1	A	213	Total 1616	C 1012	N 290	O 307	S 7	0	0	0
1	B	209	Total 1581	C 993	N 282	O 299	S 7	0	0	0
1	C	213	Total 1616	C 1012	N 290	O 307	S 7	0	0	0
1	D	209	Total 1581	C 993	N 282	O 299	S 7	0	0	0
1	E	213	Total 1616	C 1012	N 290	O 307	S 7	0	0	0
1	F	209	Total 1581	C 993	N 282	O 299	S 7	0	0	0
1	G	213	Total 1616	C 1012	N 290	O 307	S 7	0	0	0
1	H	209	Total 1581	C 993	N 282	O 299	S 7	0	0	0

There are 32 discrepancies between the modelled and reference sequences:

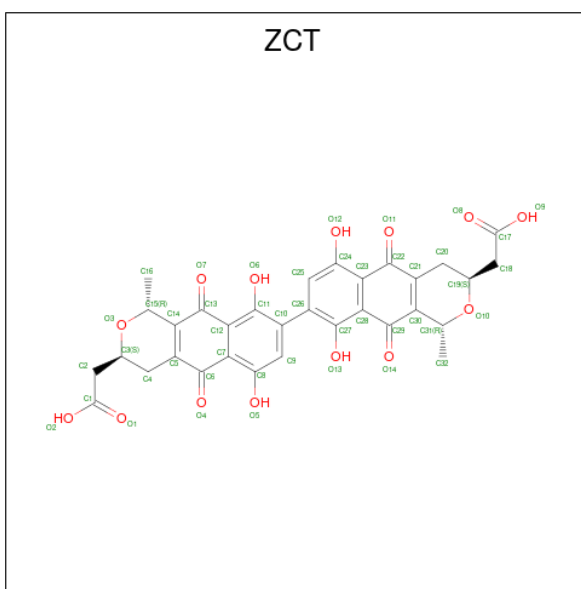
Chain	Residue	Modelled	Actual	Comment	Reference
A	26	GLY	-	expression tag	UNP Q53901
A	27	ALA	-	expression tag	UNP Q53901
A	28	MET	-	expression tag	UNP Q53901
A	29	ALA	-	expression tag	UNP Q53901
B	26	GLY	-	expression tag	UNP Q53901
B	27	ALA	-	expression tag	UNP Q53901
B	28	MET	-	expression tag	UNP Q53901
B	29	ALA	-	expression tag	UNP Q53901
C	26	GLY	-	expression tag	UNP Q53901
C	27	ALA	-	expression tag	UNP Q53901
C	28	MET	-	expression tag	UNP Q53901
C	29	ALA	-	expression tag	UNP Q53901
D	26	GLY	-	expression tag	UNP Q53901

*Continued on next page...*

Continued from previous page...

Chain	Residue	Modelled	Actual	Comment	Reference
D	27	ALA	-	expression tag	UNP Q53901
D	28	MET	-	expression tag	UNP Q53901
D	29	ALA	-	expression tag	UNP Q53901
E	26	GLY	-	expression tag	UNP Q53901
E	27	ALA	-	expression tag	UNP Q53901
E	28	MET	-	expression tag	UNP Q53901
E	29	ALA	-	expression tag	UNP Q53901
F	26	GLY	-	expression tag	UNP Q53901
F	27	ALA	-	expression tag	UNP Q53901
F	28	MET	-	expression tag	UNP Q53901
F	29	ALA	-	expression tag	UNP Q53901
G	26	GLY	-	expression tag	UNP Q53901
G	27	ALA	-	expression tag	UNP Q53901
G	28	MET	-	expression tag	UNP Q53901
G	29	ALA	-	expression tag	UNP Q53901
H	26	GLY	-	expression tag	UNP Q53901
H	27	ALA	-	expression tag	UNP Q53901
H	28	MET	-	expression tag	UNP Q53901
H	29	ALA	-	expression tag	UNP Q53901

- Molecule 2 is 2,2'-[(1R,1'R,3S,3'S)-6,6',9,9'-tetrahydroxy-1,1'-dimethyl-5,5',10,10'-tetraoxo-3,3',4,4',5,5',10,10'-octahydro-1H,1'H-8,8'-bibenzo[g]isochromene-3,3'-diyl]diacetic acid (three-letter code: ZCT) (formula: C<sub>32</sub>H<sub>26</sub>O<sub>14</sub>).



Mol	Chain	Residues	Atoms				ZeroOcc	AltConf
			Total	C	H	O		
2	A	1	50	32	4	14	0	0

Continued on next page...

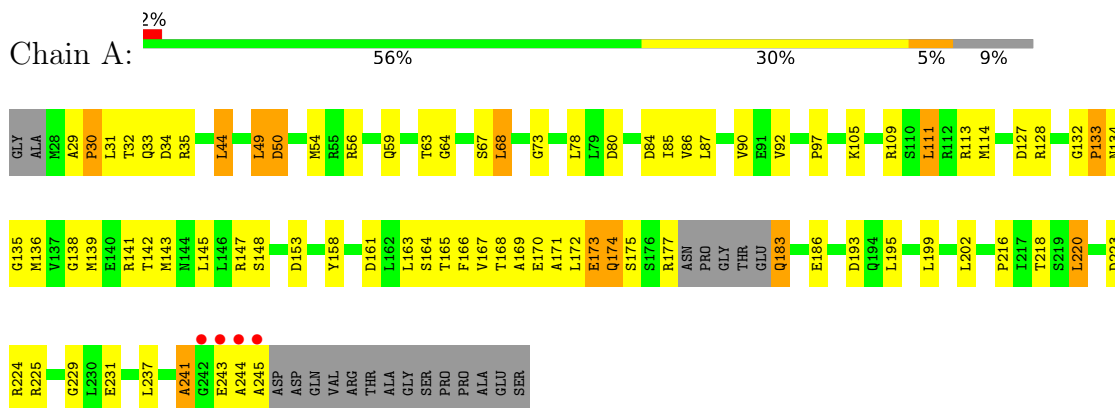
*Continued from previous page...*

<b>Mol</b>	<b>Chain</b>	<b>Residues</b>	<b>Atoms</b>				<b>ZeroOcc</b>	<b>AltConf</b>
2	B	1	Total	C	H	O	0	0
			50	32	4	14		
2	C	1	Total	C	H	O	0	0
			50	32	4	14		
2	D	1	Total	C	H	O	0	0
			50	32	4	14		
2	E	1	Total	C	H	O	0	0
			50	32	4	14		
2	F	1	Total	C	H	O	0	0
			50	32	4	14		
2	G	1	Total	C	H	O	0	0
			50	32	4	14		
2	H	1	Total	C	H	O	0	0
			50	32	4	14		

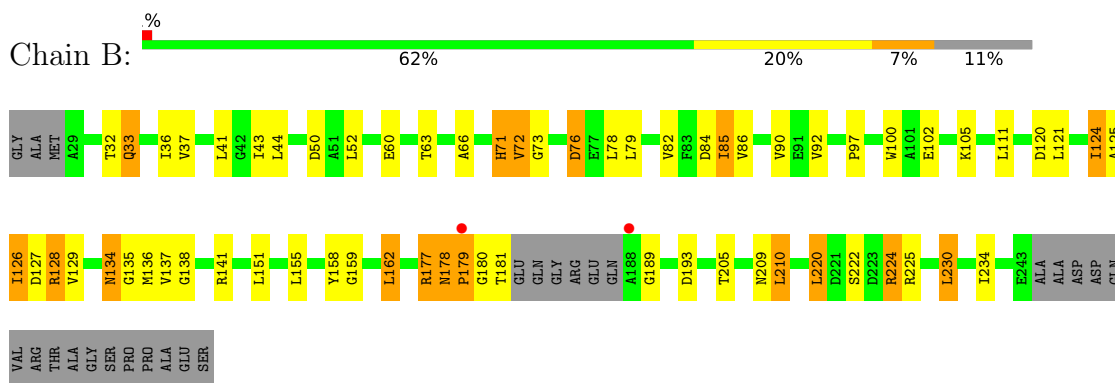
### 3 Residue-property plots [i](#)

These plots are drawn for all protein, RNA, DNA and oligosaccharide chains in the entry. The first graphic for a chain summarises the proportions of the various outlier classes displayed in the second graphic. The second graphic shows the sequence view annotated by issues in geometry and electron density. Residues are color-coded according to the number of geometric quality criteria for which they contain at least one outlier: green = 0, yellow = 1, orange = 2 and red = 3 or more. A red dot above a residue indicates a poor fit to the electron density ( $RSRZ > 2$ ). Stretches of 2 or more consecutive residues without any outlier are shown as a green connector. Residues present in the sample, but not in the model, are shown in grey.

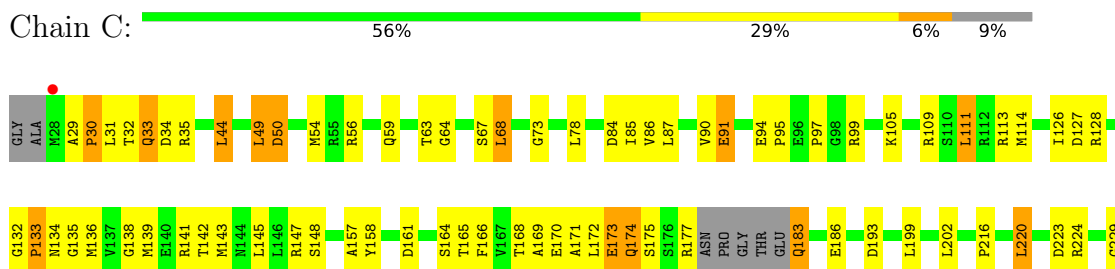
- Molecule 1: ActR protein

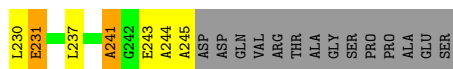


- Molecule 1: ActR protein

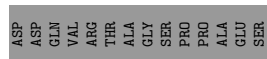
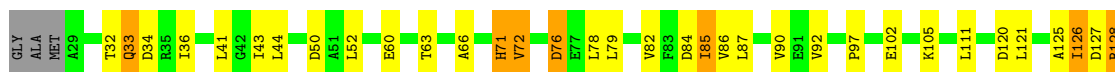


- Molecule 1: ActR protein

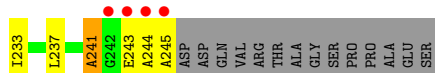




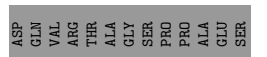
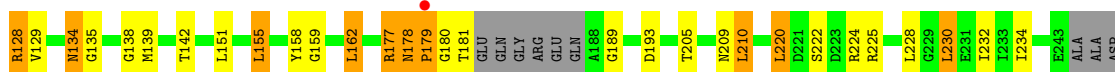
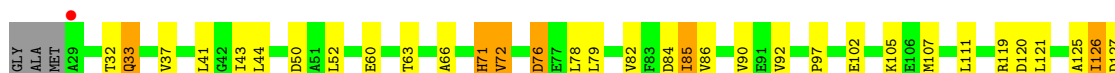
• Molecule 1: ActR protein



• Molecule 1: ActR protein



• Molecule 1: ActR protein



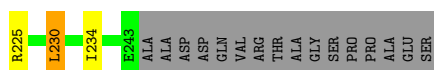
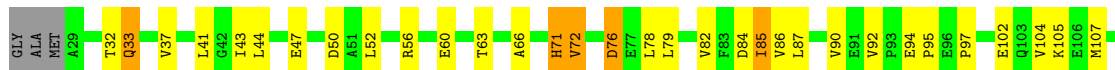
• Molecule 1: ActR protein







● Molecule 1: ActR protein



## 4 Data and refinement statistics i

Property	Value	Source
Space group	P 1	Depositor
Cell constants a, b, c, $\alpha$ , $\beta$ , $\gamma$	57.88Å 79.00Å 107.19Å 89.56° 89.92° 89.88°	Depositor
Resolution (Å)	37.12 – 3.05 31.23 – 3.05	Depositor EDS
% Data completeness (in resolution range)	85.1 (37.12-3.05) 83.2 (31.23-3.05)	Depositor EDS
$R_{merge}$	0.06	Depositor
$R_{sym}$	(Not available)	Depositor
$\langle I/\sigma(I) \rangle$ <sup>1</sup>	2.20 (at 3.06Å)	Xtrriage
Refinement program	REFMAC 5.2.0019	Depositor
R, $R_{free}$	0.260 , 0.288 0.262 , 0.280	Depositor DCC
$R_{free}$ test set	961 reflections (3.13%)	wwPDB-VP
Wilson B-factor (Å <sup>2</sup> )	82.7	Xtrriage
Anisotropy	0.159	Xtrriage
Bulk solvent $k_{sol}$ (e/Å <sup>3</sup> ), $B_{sol}$ (Å <sup>2</sup> )	0.33 , 39.3	EDS
L-test for twinning <sup>2</sup>	$\langle  L  \rangle = 0.51$ , $\langle L^2 \rangle = 0.35$	Xtrriage
Estimated twinning fraction	0.438 for h,-k,-l 0.438 for -h,k,-l 0.439 for -h,-k,l	Xtrriage
$F_o, F_c$ correlation	0.91	EDS
Total number of atoms	13188	wwPDB-VP
Average B, all atoms (Å <sup>2</sup> )	60.0	wwPDB-VP

Xtrriage's analysis on translational NCS is as follows: *The largest off-origin peak in the Patterson function is 5.86% of the height of the origin peak. No significant pseudotranslation is detected.*

<sup>1</sup>Intensities estimated from amplitudes.

<sup>2</sup>Theoretical values of  $\langle |L| \rangle$ ,  $\langle L^2 \rangle$  for acentric reflections are 0.5, 0.333 respectively for untwinned datasets, and 0.375, 0.2 for perfectly twinned datasets.

## 5 Model quality

### 5.1 Standard geometry

Bond lengths and bond angles in the following residue types are not validated in this section: ZCT

The Z score for a bond length (or angle) is the number of standard deviations the observed value is removed from the expected value. A bond length (or angle) with  $|Z| > 5$  is considered an outlier worth inspection. RMSZ is the root-mean-square of all Z scores of the bond lengths (or angles).

Mol	Chain	Bond lengths		Bond angles	
		RMSZ	# Z  >5	RMSZ	# Z  >5
1	A	0.61	0/1640	0.77	1/2220 (0.0%)
1	B	0.62	0/1606	0.75	0/2177
1	C	0.61	0/1640	0.76	1/2220 (0.0%)
1	D	0.60	0/1606	0.75	0/2177
1	E	0.61	0/1640	0.77	1/2220 (0.0%)
1	F	0.61	0/1606	0.75	0/2177
1	G	0.61	0/1640	0.76	0/2220
1	H	0.62	0/1606	0.74	0/2177
All	All	0.61	0/12984	0.76	3/17588 (0.0%)

There are no bond length outliers.

All (3) bond angle outliers are listed below:

Mol	Chain	Res	Type	Atoms	Z	Observed(°)	Ideal(°)
1	A	111	LEU	CA-CB-CG	5.33	127.55	115.30
1	C	220	LEU	CA-CB-CG	5.11	127.04	115.30
1	E	111	LEU	CA-CB-CG	5.10	127.04	115.30

There are no chirality outliers.

There are no planarity outliers.

### 5.2 Too-close contacts

In the following table, the Non-H and H(model) columns list the number of non-hydrogen atoms and hydrogen atoms in the chain respectively. The H(added) column lists the number of hydrogen atoms added and optimized by MolProbity. The Clashes column lists the number of clashes within the asymmetric unit, whereas Symm-Clashes lists symmetry-related clashes.

Mol	Chain	Non-H	H(model)	H(added)	Clashes	Symm-Clashes
1	A	1616	0	1615	61	0
1	B	1581	0	1584	39	0
1	C	1616	0	1615	62	0
1	D	1581	0	1584	37	0
1	E	1616	0	1615	57	0
1	F	1581	0	1584	34	0
1	G	1616	0	1615	63	0
1	H	1581	0	1584	38	0
2	A	46	4	23	13	0
2	B	46	4	23	9	0
2	C	46	4	23	14	0
2	D	46	4	23	9	0
2	E	46	4	23	12	0
2	F	46	4	23	5	0
2	G	46	4	23	12	0
2	H	46	4	24	6	0
All	All	13156	32	12981	377	0

The all-atom clashscore is defined as the number of clashes found per 1000 atoms (including hydrogen atoms). The all-atom clashscore for this structure is 14.

All (377) close contacts within the same asymmetric unit are listed below, sorted by their clash magnitude.

Atom-1	Atom-2	Interatomic distance (Å)	Clash overlap (Å)
1:E:87:LEU:HB3	2:E:1:ZCT:C16	1.97	0.94
1:A:87:LEU:HB3	2:A:1:ZCT:C16	1.98	0.92
1:F:90:VAL:O	2:F:1:ZCT:H4	1.69	0.91
1:D:90:VAL:O	2:D:1:ZCT:H2	1.72	0.87
1:G:87:LEU:HB3	2:G:1:ZCT:C16	2.04	0.87
1:C:138:GLY:CA	2:C:1:ZCT:H2A	2.10	0.81
1:B:92:VAL:HG23	2:B:1:ZCT:H4A	1.62	0.79
1:F:151:LEU:HD23	1:F:155:LEU:HB3	1.65	0.79
1:A:29:ALA:HB1	1:A:30:PRO:HD2	1.66	0.78
1:C:84:ASP:OD1	1:C:134:ASN:HB2	1.84	0.78
1:D:151:LEU:HD23	1:D:155:LEU:HB3	1.66	0.77
1:A:87:LEU:HD13	2:A:1:ZCT:H16	1.67	0.77
1:C:138:GLY:HA3	2:C:1:ZCT:H2A	1.64	0.77
1:E:29:ALA:HB1	1:E:30:PRO:HD2	1.67	0.76
1:G:84:ASP:OD1	1:G:134:ASN:HB2	1.86	0.76
1:H:151:LEU:HD23	1:H:155:LEU:HB3	1.68	0.76
1:C:126:ILE:HA	2:C:1:ZCT:H32	1.68	0.75
1:A:142:THR:HG22	1:A:143:MET:CE	2.16	0.75

*Continued on next page...*

*Continued from previous page...*

Atom-1	Atom-2	Interatomic distance (Å)	Clash overlap (Å)
1:B:151:LEU:HD23	1:B:155:LEU:HB3	1.70	0.74
1:D:92:VAL:HG23	2:D:1:ZCT:H4A	1.68	0.74
1:A:141:ARG:HH11	1:A:141:ARG:HG2	1.53	0.74
1:G:29:ALA:HB1	1:G:30:PRO:HD2	1.69	0.73
1:E:84:ASP:OD1	1:E:134:ASN:HB2	1.87	0.73
1:C:142:THR:HG22	1:C:143:MET:CE	2.19	0.73
1:G:142:THR:HG22	1:G:143:MET:CE	2.19	0.73
1:C:29:ALA:HB1	1:C:30:PRO:HD2	1.69	0.72
1:C:111:LEU:HG	2:C:1:ZCT:H16	1.72	0.71
1:G:141:ARG:HG2	1:G:141:ARG:HH11	1.55	0.71
1:D:84:ASP:OD2	1:D:134:ASN:HB2	1.90	0.71
1:F:105:LYS:HD3	1:F:230:LEU:HD13	1.73	0.70
1:B:90:VAL:HB	2:B:1:ZCT:H4	1.74	0.70
1:B:105:LYS:HD3	1:B:230:LEU:HD13	1.73	0.70
1:H:92:VAL:HG23	2:H:1:ZCT:H4A	1.73	0.70
1:H:105:LYS:HD3	1:H:230:LEU:HD13	1.73	0.70
1:A:84:ASP:OD1	1:A:134:ASN:HB2	1.91	0.70
1:F:84:ASP:OD2	1:F:134:ASN:HB2	1.92	0.70
1:H:84:ASP:OD2	1:H:134:ASN:HB2	1.92	0.69
1:B:84:ASP:OD2	1:B:134:ASN:HB2	1.92	0.68
1:E:141:ARG:HG2	1:E:141:ARG:HH11	1.58	0.68
1:C:105:LYS:HD3	1:C:109:ARG:HH11	1.59	0.68
1:D:105:LYS:HD3	1:D:230:LEU:HD13	1.76	0.67
1:C:141:ARG:HG2	1:C:141:ARG:HH11	1.58	0.67
1:H:135:GLY:HA2	2:H:1:ZCT:O7	1.94	0.67
1:G:87:LEU:HB3	2:G:1:ZCT:H16	1.76	0.67
1:E:87:LEU:HD13	2:E:1:ZCT:H16	1.77	0.65
1:C:138:GLY:HA2	2:C:1:ZCT:H2A	1.79	0.64
1:A:44:LEU:HD21	1:A:49:LEU:HA	1.80	0.64
1:A:105:LYS:HD3	1:A:109:ARG:HH11	1.62	0.64
1:E:142:THR:HG22	1:E:143:MET:CE	2.28	0.64
1:A:92:VAL:HG23	2:A:1:ZCT:H4A	1.80	0.64
1:A:90:VAL:HB	2:A:1:ZCT:H4	1.77	0.64
1:A:168:THR:O	1:A:171:ALA:N	2.32	0.63
1:E:105:LYS:HD3	1:E:109:ARG:HH11	1.63	0.63
1:G:92:VAL:HG23	2:G:1:ZCT:H4A	1.80	0.63
1:A:142:THR:HG22	1:A:143:MET:HE1	1.80	0.62
1:H:125:ALA:O	2:H:1:ZCT:H32	1.98	0.62
1:E:87:LEU:HB3	2:E:1:ZCT:H16	1.79	0.62
1:G:90:VAL:HB	2:G:1:ZCT:H4	1.80	0.62
1:A:87:LEU:HB3	2:A:1:ZCT:H16B	1.79	0.62

*Continued on next page...*

*Continued from previous page...*

Atom-1	Atom-2	Interatomic distance (Å)	Clash overlap (Å)
1:D:90:VAL:HB	2:D:1:ZCT:H4	1.82	0.61
1:B:179:PRO:C	1:B:181:THR:HA	2.21	0.61
1:D:178:ASN:N	1:D:179:PRO:HD3	2.15	0.61
1:G:138:GLY:HA3	2:G:1:ZCT:C15	2.31	0.61
1:E:90:VAL:HB	2:E:1:ZCT:H4	1.83	0.61
1:C:126:ILE:HA	2:C:1:ZCT:C32	2.31	0.60
1:G:132:GLY:O	1:G:135:GLY:N	2.34	0.60
1:C:142:THR:HG22	1:C:143:MET:HE2	1.82	0.60
1:F:178:ASN:N	1:F:179:PRO:HD3	2.16	0.60
1:H:138:GLY:HA3	2:H:1:ZCT:C14	2.31	0.60
1:G:134:ASN:O	2:G:1:ZCT:H15	2.01	0.60
1:E:44:LEU:HD21	1:E:49:LEU:HA	1.83	0.60
1:C:168:THR:O	1:C:171:ALA:N	2.34	0.59
1:E:87:LEU:HB3	2:E:1:ZCT:H16B	1.83	0.59
1:G:139:MET:HB3	1:H:210:LEU:HD11	1.84	0.59
1:G:44:LEU:HD21	1:G:49:LEU:HA	1.85	0.59
1:B:178:ASN:N	1:B:179:PRO:HD3	2.17	0.59
1:F:179:PRO:C	1:F:181:THR:HA	2.23	0.59
1:C:139:MET:HB3	1:D:210:LEU:HD11	1.84	0.59
1:H:178:ASN:N	1:H:179:PRO:HD3	2.18	0.59
1:C:132:GLY:O	1:C:135:GLY:N	2.36	0.59
1:F:82:VAL:O	1:F:86:VAL:HG22	2.03	0.59
1:G:142:THR:HG22	1:G:143:MET:HE3	1.85	0.59
1:G:29:ALA:HB3	1:G:35:ARG:HH12	1.68	0.58
1:D:179:PRO:C	1:D:181:THR:HA	2.23	0.58
1:C:44:LEU:HD21	1:C:49:LEU:HA	1.85	0.58
1:H:179:PRO:C	1:H:181:THR:HA	2.23	0.58
1:G:168:THR:O	1:G:171:ALA:N	2.35	0.58
1:A:145:LEU:O	1:A:148:SER:HB3	2.04	0.58
1:G:142:THR:HG22	1:G:143:MET:HE2	1.85	0.58
1:E:29:ALA:HB3	1:E:35:ARG:HH12	1.68	0.57
1:A:142:THR:HG22	1:A:143:MET:HE2	1.86	0.57
1:E:92:VAL:HG23	2:E:1:ZCT:H4A	1.85	0.57
1:C:29:ALA:HB3	1:C:35:ARG:HH12	1.70	0.57
1:G:105:LYS:HD3	1:G:109:ARG:HH11	1.68	0.57
1:G:87:LEU:HD13	2:G:1:ZCT:H16	1.87	0.57
1:H:82:VAL:O	1:H:86:VAL:HG22	2.04	0.57
1:A:87:LEU:HB3	2:A:1:ZCT:H16	1.86	0.56
1:C:142:THR:HG22	1:C:143:MET:HE3	1.87	0.56
1:E:138:GLY:HA3	2:E:1:ZCT:H15	1.87	0.56
1:G:138:GLY:HA3	2:G:1:ZCT:H15	1.88	0.56

*Continued on next page...*

*Continued from previous page...*

Atom-1	Atom-2	Interatomic distance (Å)	Clash overlap (Å)
1:C:31:LEU:CD2	1:C:67:SER:HB3	2.35	0.56
1:E:168:THR:O	1:E:171:ALA:N	2.39	0.56
1:A:138:GLY:HA3	2:A:1:ZCT:H15	1.88	0.56
1:B:224:ARG:HD2	1:B:224:ARG:O	2.06	0.56
1:G:147:ARG:HD3	1:H:209:ASN:OD1	2.07	0.55
1:B:128:ARG:O	2:B:1:ZCT:C32	2.54	0.55
1:G:31:LEU:CD2	1:G:67:SER:HB3	2.36	0.55
1:G:145:LEU:O	1:G:148:SER:HB3	2.05	0.55
1:E:166:PHE:CZ	1:E:229:GLY:HA3	2.42	0.55
1:C:165:THR:O	1:C:168:THR:OG1	2.23	0.55
1:G:141:ARG:HG2	1:G:141:ARG:NH1	2.22	0.54
1:A:177:ARG:NH2	1:A:220:LEU:HA	2.23	0.54
1:C:199:LEU:O	1:C:202:LEU:HB2	2.08	0.54
1:E:142:THR:HG22	1:E:143:MET:HE2	1.88	0.54
1:D:71:HIS:N	1:D:71:HIS:CD2	2.76	0.54
1:D:82:VAL:O	1:D:86:VAL:HG22	2.08	0.54
1:G:166:PHE:CZ	1:G:229:GLY:HA3	2.43	0.54
1:A:132:GLY:O	1:A:135:GLY:N	2.41	0.53
1:G:199:LEU:O	1:G:202:LEU:HB2	2.09	0.53
1:A:199:LEU:O	1:A:202:LEU:HB2	2.08	0.53
1:E:31:LEU:CD2	1:E:67:SER:HB3	2.38	0.53
1:E:139:MET:HB3	1:F:210:LEU:HD11	1.89	0.53
1:E:145:LEU:O	1:E:148:SER:HB3	2.09	0.53
1:H:47:GLU:OE2	1:H:56:ARG:NH2	2.31	0.53
1:H:90:VAL:HB	2:H:1:ZCT:H4	1.91	0.53
1:C:166:PHE:CZ	1:C:229:GLY:HA3	2.44	0.53
1:A:31:LEU:CD2	1:A:67:SER:HB3	2.39	0.53
1:E:54:MET:HE2	1:E:73:GLY:O	2.09	0.53
1:C:174:GLN:OE1	1:C:177:ARG:HB2	2.10	0.52
1:F:92:VAL:HG23	2:F:1:ZCT:O4	2.09	0.52
1:A:29:ALA:HB3	1:A:35:ARG:HH12	1.74	0.52
1:B:82:VAL:O	1:B:86:VAL:HG22	2.10	0.52
1:E:199:LEU:O	1:E:202:LEU:HB2	2.09	0.52
1:F:125:ALA:C	1:F:127:ASP:H	2.13	0.52
1:B:71:HIS:N	1:B:71:HIS:CD2	2.77	0.52
1:C:111:LEU:HG	2:C:1:ZCT:C16	2.39	0.52
1:C:145:LEU:O	1:C:148:SER:HB3	2.09	0.52
1:E:158:TYR:CE1	1:F:225:ARG:HB2	2.45	0.52
1:C:63:THR:OG1	1:C:64:GLY:N	2.43	0.52
1:D:138:GLY:HA3	2:D:1:ZCT:C15	2.39	0.52
1:E:177:ARG:NH2	1:E:220:LEU:HA	2.25	0.52

*Continued on next page...*

*Continued from previous page...*

Atom-1	Atom-2	Interatomic distance (Å)	Clash overlap (Å)
1:C:237:LEU:O	1:C:241:ALA:N	2.33	0.52
1:C:54:MET:HE1	1:C:68:LEU:HD11	1.92	0.51
1:G:32:THR:C	1:G:34:ASP:H	2.14	0.51
1:A:165:THR:O	1:A:168:THR:OG1	2.29	0.51
1:C:147:ARG:HD3	1:D:209:ASN:OD1	2.11	0.51
1:F:71:HIS:N	1:F:71:HIS:CD2	2.79	0.50
1:A:166:PHE:CZ	1:A:229:GLY:HA3	2.47	0.50
1:E:90:VAL:CG1	2:E:1:ZCT:H4	2.42	0.50
1:E:158:TYR:HE1	1:F:225:ARG:HB2	1.77	0.50
1:G:177:ARG:NH2	1:G:220:LEU:HA	2.27	0.50
1:A:87:LEU:CD1	2:A:1:ZCT:H16	2.38	0.50
1:E:54:MET:HE3	1:E:68:LEU:HD21	1.94	0.50
1:G:170:GLU:O	1:G:173:GLU:HB2	2.12	0.49
1:C:141:ARG:HG2	1:C:141:ARG:NH1	2.27	0.49
1:B:79:LEU:HB2	1:B:128:ARG:NH1	2.27	0.49
1:B:125:ALA:C	1:B:127:ASP:H	2.16	0.49
1:C:90:VAL:HG11	2:C:1:ZCT:H16A	1.94	0.49
1:G:132:GLY:O	1:G:133:PRO:C	2.51	0.49
1:G:87:LEU:HB3	2:G:1:ZCT:H16B	1.91	0.49
1:A:63:THR:OG1	1:A:64:GLY:N	2.46	0.48
1:H:71:HIS:CD2	1:H:71:HIS:N	2.81	0.48
1:B:180:GLY:N	1:B:181:THR:HA	2.28	0.48
1:D:137:VAL:O	1:D:141:ARG:HG3	2.12	0.48
1:A:158:TYR:CE1	1:B:225:ARG:HB2	2.48	0.48
1:C:54:MET:CE	1:C:68:LEU:HD11	2.43	0.48
1:E:170:GLU:O	1:E:173:GLU:HB2	2.13	0.48
1:C:113:ARG:NH2	1:C:113:ARG:HB2	2.28	0.48
1:E:174:GLN:OE1	1:E:177:ARG:HB2	2.13	0.48
1:D:79:LEU:HB2	1:D:128:ARG:NH1	2.28	0.48
1:H:230:LEU:HD22	1:H:234:ILE:HD11	1.95	0.48
1:B:138:GLY:HA3	2:B:1:ZCT:C15	2.43	0.48
1:G:158:TYR:O	1:G:161:ASP:HB3	2.14	0.48
1:A:164:SER:HB3	2:A:1:ZCT:H9	1.96	0.48
1:D:125:ALA:C	1:D:127:ASP:H	2.17	0.48
1:E:32:THR:C	1:E:34:ASP:H	2.17	0.48
1:A:113:ARG:NH2	1:A:113:ARG:HB2	2.28	0.48
1:A:174:GLN:OE1	1:A:177:ARG:HB2	2.14	0.48
1:A:237:LEU:O	1:A:241:ALA:N	2.34	0.48
1:H:158:TYR:CE2	1:H:162:LEU:HG	2.49	0.48
1:A:139:MET:HB3	1:B:210:LEU:HD11	1.95	0.47
2:D:1:ZCT:O14	2:D:1:ZCT:H32B	2.14	0.47

*Continued on next page...*



*Continued from previous page...*

Atom-1	Atom-2	Interatomic distance (Å)	Clash overlap (Å)
1:G:125:ALA:O	2:G:1:ZCT:H32	2.14	0.47
1:C:177:ARG:NH2	1:C:220:LEU:HA	2.29	0.47
1:E:237:LEU:O	1:E:241:ALA:N	2.32	0.47
1:F:138:GLY:HA3	2:F:1:ZCT:C13	2.44	0.47
1:F:135:GLY:HA2	2:F:1:ZCT:O7	2.14	0.47
1:F:139:MET:HE3	1:F:139:MET:HB2	1.81	0.47
1:C:138:GLY:HA2	2:C:1:ZCT:C2	2.43	0.47
1:D:230:LEU:HD22	1:D:234:ILE:HD11	1.95	0.47
1:D:180:GLY:N	1:D:181:THR:HA	2.29	0.47
1:G:54:MET:HE2	1:G:73:GLY:O	2.14	0.47
1:A:32:THR:C	1:A:34:ASP:H	2.17	0.47
1:A:34:ASP:OD2	1:D:34:ASP:HB2	2.14	0.47
1:D:76:ASP:HA	1:D:79:LEU:HD12	1.97	0.47
1:E:164:SER:HB3	2:E:1:ZCT:H9	1.96	0.47
1:F:79:LEU:HB2	1:F:128:ARG:NH1	2.29	0.47
1:F:180:GLY:N	1:F:181:THR:HA	2.29	0.47
1:G:84:ASP:O	1:G:134:ASN:ND2	2.47	0.47
1:G:134:ASN:HB3	2:G:1:ZCT:H16A	1.97	0.47
1:A:141:ARG:HG2	1:A:141:ARG:NH1	2.21	0.47
1:C:32:THR:C	1:C:34:ASP:H	2.18	0.47
1:E:132:GLY:O	1:E:135:GLY:N	2.47	0.47
1:G:138:GLY:HA3	2:G:1:ZCT:C14	2.45	0.47
1:B:78:LEU:O	1:B:82:VAL:HG23	2.15	0.47
1:C:158:TYR:O	1:C:161:ASP:HB3	2.15	0.47
1:E:141:ARG:HG2	1:E:141:ARG:NH1	2.27	0.46
1:A:163:LEU:O	1:A:167:VAL:HG23	2.15	0.46
1:F:228:LEU:O	1:F:232:ILE:HD12	2.15	0.46
1:A:138:GLY:HA3	2:A:1:ZCT:C15	2.45	0.46
1:B:76:ASP:HA	1:B:79:LEU:HD12	1.97	0.46
1:G:54:MET:HE1	1:G:68:LEU:HD11	1.96	0.46
1:F:105:LYS:HE2	1:F:234:ILE:CD1	2.46	0.46
1:H:125:ALA:C	1:H:127:ASP:H	2.18	0.46
1:E:54:MET:CE	1:E:68:LEU:HD11	2.46	0.46
1:G:63:THR:OG1	1:G:64:GLY:N	2.49	0.46
1:A:80:ASP:OD1	1:A:128:ARG:NE	2.42	0.46
1:A:158:TYR:HE1	1:B:225:ARG:HB2	1.81	0.46
1:C:158:TYR:CE1	1:D:225:ARG:HB2	2.51	0.46
1:C:170:GLU:O	1:C:173:GLU:HB2	2.16	0.46
1:H:158:TYR:O	1:H:159:GLY:C	2.52	0.46
1:H:180:GLY:N	1:H:181:THR:HA	2.30	0.46
1:A:134:ASN:HB3	2:A:1:ZCT:H16A	1.98	0.45

*Continued on next page...*

*Continued from previous page...*

Atom-1	Atom-2	Interatomic distance (Å)	Clash overlap (Å)
1:E:33:GLN:O	1:E:33:GLN:HG2	2.16	0.45
1:E:147:ARG:HD3	1:F:209:ASN:OD1	2.16	0.45
1:D:43:ILE:HD11	1:D:52:LEU:HD13	1.99	0.45
1:E:113:ARG:NH2	1:E:113:ARG:HB2	2.30	0.45
1:A:54:MET:CE	1:A:68:LEU:HD11	2.47	0.45
1:D:86:VAL:HG21	1:D:121:LEU:HD21	1.99	0.45
1:G:111:LEU:O	1:G:114:MET:HB3	2.17	0.45
1:G:174:GLN:OE1	1:G:177:ARG:HB2	2.17	0.45
1:A:195:LEU:HD23	1:A:218:THR:HG22	1.99	0.45
1:G:163:LEU:O	1:G:167:VAL:HG23	2.17	0.45
1:B:71:HIS:O	1:B:73:GLY:N	2.45	0.45
1:C:87:LEU:HD23	1:C:87:LEU:HA	1.77	0.45
1:B:128:ARG:O	2:B:1:ZCT:H32A	2.16	0.45
1:A:54:MET:HE1	1:A:68:LEU:HD11	1.99	0.45
1:C:164:SER:HG	2:C:1:ZCT:C27	2.30	0.44
1:H:78:LEU:O	1:H:82:VAL:HG23	2.17	0.44
1:A:147:ARG:HD3	1:B:209:ASN:OD1	2.17	0.44
1:B:90:VAL:O	2:B:1:ZCT:H2	2.17	0.44
1:E:127:ASP:O	1:E:128:ARG:HG2	2.18	0.44
1:G:50:ASP:N	1:G:50:ASP:OD2	2.50	0.44
1:G:56:ARG:O	1:G:59:GLN:HB3	2.17	0.44
1:B:86:VAL:HG21	1:B:121:LEU:HD21	1.99	0.44
1:A:54:MET:HE2	1:A:73:GLY:O	2.17	0.44
1:A:56:ARG:O	1:A:59:GLN:HB3	2.18	0.44
1:B:33:GLN:HA	1:B:36:ILE:HD12	2.00	0.44
1:C:132:GLY:O	1:C:133:PRO:C	2.55	0.44
1:C:230:LEU:O	1:C:231:GLU:C	2.55	0.44
1:F:43:ILE:HD11	1:F:52:LEU:HD13	1.99	0.44
1:H:82:VAL:O	1:H:85:ILE:HG22	2.17	0.44
1:B:230:LEU:HD22	1:B:234:ILE:HD11	1.99	0.44
1:G:165:THR:O	1:G:168:THR:OG1	2.33	0.44
2:D:1:ZCT:O14	2:D:1:ZCT:C32	2.65	0.44
1:A:44:LEU:CD2	1:A:49:LEU:HA	2.47	0.44
1:F:230:LEU:HD22	1:F:234:ILE:HD11	2.00	0.44
1:C:56:ARG:O	1:C:59:GLN:HB3	2.18	0.44
1:H:137:VAL:O	1:H:141:ARG:HG3	2.18	0.44
1:C:33:GLN:O	1:C:33:GLN:HG2	2.18	0.44
1:G:158:TYR:CE1	1:H:225:ARG:HB2	2.53	0.44
1:B:125:ALA:O	2:B:1:ZCT:H32	2.18	0.43
1:E:158:TYR:O	1:E:161:ASP:HB3	2.17	0.43
1:F:125:ALA:O	1:F:127:ASP:N	2.47	0.43

*Continued on next page...*

*Continued from previous page...*

Atom-1	Atom-2	Interatomic distance (Å)	Clash overlap (Å)
1:G:54:MET:CE	1:G:68:LEU:HD11	2.47	0.43
1:D:33:GLN:HA	1:D:36:ILE:HD12	2.01	0.43
1:F:78:LEU:O	1:F:82:VAL:HG23	2.18	0.43
1:H:33:GLN:O	1:H:37:VAL:HG13	2.18	0.43
1:B:158:TYR:CE2	1:B:162:LEU:HG	2.53	0.43
1:D:82:VAL:O	1:D:85:ILE:HG22	2.18	0.43
1:H:128:ARG:O	2:H:1:ZCT:H32A	2.18	0.43
1:F:76:ASP:HA	1:F:79:LEU:HD12	2.00	0.43
1:F:158:TYR:O	1:F:159:GLY:C	2.56	0.43
1:H:79:LEU:HB2	1:H:128:ARG:NH1	2.34	0.43
1:H:224:ARG:HD2	1:H:224:ARG:O	2.19	0.43
1:E:105:LYS:HD3	1:E:109:ARG:NH1	2.32	0.43
1:G:243:GLU:O	1:G:245:ALA:N	2.51	0.43
1:A:168:THR:O	1:A:169:ALA:C	2.56	0.43
1:C:94:GLU:HG3	1:C:95:PRO:HD2	2.01	0.43
1:E:229:GLY:O	1:E:233:ILE:HG12	2.19	0.43
1:B:158:TYR:O	1:B:159:GLY:C	2.57	0.42
1:A:158:TYR:O	1:A:161:ASP:HB3	2.18	0.42
1:E:90:VAL:O	2:E:1:ZCT:H2	2.19	0.42
1:E:131:LEU:HD12	1:E:131:LEU:HA	1.86	0.42
1:E:165:THR:O	1:E:168:THR:OG1	2.32	0.42
1:A:33:GLN:HG2	1:A:33:GLN:O	2.19	0.42
1:A:50:ASP:OD2	1:A:50:ASP:N	2.51	0.42
1:G:214:ALA:O	1:G:218:THR:OG1	2.31	0.42
1:C:44:LEU:CD2	1:C:49:LEU:HA	2.49	0.42
1:C:54:MET:HE2	1:C:73:GLY:O	2.19	0.42
1:E:29:ALA:HB3	1:E:35:ARG:NH1	2.33	0.42
1:A:84:ASP:O	1:A:134:ASN:ND2	2.49	0.42
1:C:142:THR:CB	2:C:1:ZCT:O4	2.67	0.42
1:E:183:GLN:HE21	1:E:186:GLU:HB2	1.83	0.42
1:G:87:LEU:HA	1:G:87:LEU:HD23	1.70	0.42
1:H:76:ASP:HA	1:H:79:LEU:HD12	2.02	0.42
1:E:63:THR:OG1	1:E:64:GLY:N	2.53	0.42
1:E:87:LEU:HD23	1:E:87:LEU:HA	1.76	0.42
1:F:33:GLN:O	1:F:37:VAL:HG13	2.19	0.42
1:G:229:GLY:O	1:G:233:ILE:HG12	2.20	0.42
1:H:43:ILE:HD11	1:H:52:LEU:HD13	2.02	0.42
1:A:132:GLY:O	1:A:133:PRO:C	2.58	0.42
2:C:1:ZCT:O14	2:C:1:ZCT:O13	2.38	0.42
1:A:127:ASP:O	1:A:128:ARG:HG2	2.20	0.42
1:A:183:GLN:HE21	1:A:186:GLU:HB2	1.84	0.42

*Continued on next page...*

*Continued from previous page...*

Atom-1	Atom-2	Interatomic distance (Å)	Clash overlap (Å)
1:H:105:LYS:HE2	1:H:234:ILE:CD1	2.49	0.42
1:B:128:ARG:O	2:B:1:ZCT:H32B	2.20	0.42
1:C:90:VAL:HG11	2:C:1:ZCT:C16	2.50	0.42
1:C:168:THR:O	1:C:169:ALA:C	2.58	0.42
1:D:78:LEU:O	1:D:82:VAL:HG23	2.20	0.42
1:D:224:ARG:HD2	1:D:224:ARG:O	2.19	0.42
1:G:195:LEU:HD23	1:G:218:THR:HG22	2.02	0.42
1:H:104:VAL:O	1:H:107:MET:HB3	2.19	0.42
1:E:44:LEU:CD2	1:E:49:LEU:HA	2.50	0.42
1:E:56:ARG:O	1:E:59:GLN:HB3	2.20	0.42
1:E:138:GLY:HA3	2:E:1:ZCT:C15	2.50	0.42
1:H:158:TYR:HE2	1:H:162:LEU:HG	1.84	0.42
1:H:172:LEU:HD12	1:H:172:LEU:HA	1.90	0.42
1:D:228:LEU:O	1:D:232:ILE:HD12	2.19	0.41
1:C:99:ARG:HD3	1:G:117:ALA:HA	2.01	0.41
1:C:105:LYS:HD3	1:C:109:ARG:NH1	2.31	0.41
2:C:1:ZCT:C4	2:C:1:ZCT:H16B	2.49	0.41
1:E:90:VAL:CB	2:E:1:ZCT:H4	2.48	0.41
1:G:213:LEU:O	1:G:217:ILE:HD12	2.20	0.41
1:A:243:GLU:O	1:A:245:ALA:N	2.53	0.41
1:B:43:ILE:HD11	1:B:52:LEU:HD13	2.02	0.41
1:D:92:VAL:CG2	2:D:1:ZCT:H4A	2.44	0.41
1:F:107:MET:SD	1:F:142:THR:HG23	2.61	0.41
1:F:177:ARG:NH1	1:F:220:LEU:O	2.54	0.41
1:H:94:GLU:HA	1:H:95:PRO:HD3	1.92	0.41
1:B:124:ILE:HG23	1:B:128:ARG:HD2	2.03	0.41
1:F:138:GLY:HA3	2:F:1:ZCT:C14	2.50	0.41
1:D:87:LEU:HB3	2:D:1:ZCT:C16	2.51	0.41
1:G:113:ARG:HB2	1:G:113:ARG:NH2	2.34	0.41
1:B:82:VAL:O	1:B:85:ILE:HG22	2.20	0.41
1:D:158:TYR:O	1:D:159:GLY:C	2.56	0.41
1:F:82:VAL:O	1:F:85:ILE:HG22	2.21	0.41
1:A:170:GLU:O	1:A:173:GLU:HB2	2.21	0.41
1:F:119:ARG:O	1:F:121:LEU:N	2.54	0.41
1:G:32:THR:C	1:G:34:ASP:N	2.75	0.41
1:G:54:MET:HE3	1:G:68:LEU:HD21	2.03	0.41
1:G:168:THR:O	1:G:169:ALA:C	2.59	0.41
1:B:177:ARG:NH1	1:B:220:LEU:O	2.54	0.41
1:C:90:VAL:HG12	1:C:91:GLU:N	2.35	0.41
1:C:158:TYR:HE1	1:D:225:ARG:HB2	1.85	0.41
1:C:172:LEU:O	1:C:175:SER:HB3	2.21	0.41

*Continued on next page...*

Continued from previous page...

Atom-1	Atom-2	Interatomic distance (Å)	Clash overlap (Å)
1:C:183:GLN:HE21	1:C:186:GLU:HB2	1.85	0.41
1:D:87:LEU:HB3	2:D:1:ZCT:H16B	2.03	0.41
1:G:32:THR:O	1:G:34:ASP:N	2.53	0.41
1:B:125:ALA:O	1:B:127:ASP:N	2.50	0.41
1:D:125:ALA:O	1:D:127:ASP:N	2.53	0.41
1:E:243:GLU:O	1:E:245:ALA:N	2.54	0.41
1:C:50:ASP:OD2	1:C:50:ASP:N	2.55	0.40
1:C:243:GLU:O	1:C:245:ALA:N	2.54	0.40
1:D:188:ALA:C	1:D:190:VAL:N	2.75	0.40
1:E:99:ARG:HB3	1:E:99:ARG:HH21	1.86	0.40
1:E:132:GLY:O	1:E:133:PRO:C	2.59	0.40
1:A:134:ASN:O	2:A:1:ZCT:H15	2.20	0.40
1:B:137:VAL:O	1:B:141:ARG:HG3	2.22	0.40
1:C:127:ASP:O	1:C:128:ARG:HG2	2.21	0.40
1:D:188:ALA:C	1:D:190:VAL:H	2.24	0.40
1:G:44:LEU:CD2	1:G:49:LEU:HA	2.51	0.40
1:H:177:ARG:NH1	1:H:220:LEU:O	2.53	0.40
1:E:69:TYR:CD1	1:E:73:GLY:HA2	2.54	0.40
1:G:81:LEU:HD23	1:G:81:LEU:HA	1.93	0.40
1:G:158:TYR:HE1	1:H:225:ARG:HB2	1.86	0.40
1:A:220:LEU:HD23	1:A:220:LEU:H	1.86	0.40
1:B:135:GLY:HA2	2:B:1:ZCT:O7	2.21	0.40
1:F:158:TYR:CE2	1:F:162:LEU:HG	2.56	0.40
1:H:152:HIS:O	1:H:153:ASP:C	2.59	0.40
1:A:90:VAL:CB	2:A:1:ZCT:H4	2.50	0.40
1:A:172:LEU:O	1:A:175:SER:HB3	2.21	0.40
1:B:33:GLN:O	1:B:37:VAL:HG13	2.21	0.40
1:C:31:LEU:HD22	1:C:67:SER:HB3	2.04	0.40
1:C:237:LEU:HD23	1:C:237:LEU:HA	1.93	0.40
1:D:139:MET:HE3	1:D:139:MET:HB2	1.99	0.40
1:G:172:LEU:O	1:G:175:SER:HB3	2.22	0.40

There are no symmetry-related clashes.

## 5.3 Torsion angles

### 5.3.1 Protein backbone

In the following table, the Percentiles column shows the percent Ramachandran outliers of the chain as a percentile score with respect to all X-ray entries followed by that with respect to entries of similar resolution.

The Analysed column shows the number of residues for which the backbone conformation was analysed, and the total number of residues.

Mol	Chain	Analysed	Favoured	Allowed	Outliers	Percentiles	
1	A	209/234 (89%)	176 (84%)	26 (12%)	7 (3%)	4	17
1	B	205/234 (88%)	173 (84%)	22 (11%)	10 (5%)	2	11
1	C	209/234 (89%)	173 (83%)	28 (13%)	8 (4%)	3	15
1	D	205/234 (88%)	173 (84%)	23 (11%)	9 (4%)	2	12
1	E	209/234 (89%)	169 (81%)	34 (16%)	6 (3%)	4	20
1	F	205/234 (88%)	176 (86%)	20 (10%)	9 (4%)	2	12
1	G	209/234 (89%)	172 (82%)	30 (14%)	7 (3%)	4	17
1	H	205/234 (88%)	177 (86%)	17 (8%)	11 (5%)	2	9
All	All	1656/1872 (88%)	1389 (84%)	200 (12%)	67 (4%)	3	14

All (67) Ramachandran outliers are listed below:

Mol	Chain	Res	Type
1	A	241	ALA
1	B	72	VAL
1	B	126	ILE
1	C	241	ALA
1	D	72	VAL
1	D	126	ILE
1	E	241	ALA
1	F	126	ILE
1	G	241	ALA
1	H	72	VAL
1	H	126	ILE
1	A	244	ALA
1	B	178	ASN
1	C	244	ALA
1	D	178	ASN
1	E	244	ALA
1	F	72	VAL
1	F	120	ASP
1	F	178	ASN
1	G	244	ALA
1	H	178	ASN
1	A	97	PRO
1	C	30	PRO
1	C	33	GLN

*Continued on next page...*

*Continued from previous page...*

<b>Mol</b>	<b>Chain</b>	<b>Res</b>	<b>Type</b>
1	C	97	PRO
1	E	30	PRO
1	E	97	PRO
1	G	30	PRO
1	G	33	GLN
1	G	97	PRO
1	H	120	ASP
1	H	155	LEU
1	H	189	GLY
1	A	30	PRO
1	B	120	ASP
1	B	189	GLY
1	D	120	ASP
1	D	189	GLY
1	E	216	PRO
1	F	155	LEU
1	F	189	GLY
1	A	153	ASP
1	A	216	PRO
1	B	66	ALA
1	B	100	TRP
1	C	157	ALA
1	D	97	PRO
1	D	155	LEU
1	E	133	PRO
1	F	66	ALA
1	G	216	PRO
1	H	66	ALA
1	H	97	PRO
1	H	154	GLU
1	A	133	PRO
1	C	216	PRO
1	D	66	ALA
1	F	97	PRO
1	G	133	PRO
1	H	87	LEU
1	B	97	PRO
1	C	133	PRO
1	B	124	ILE
1	H	179	PRO
1	B	179	PRO
1	D	179	PRO

*Continued on next page...*

*Continued from previous page...*

Mol	Chain	Res	Type
1	F	179	PRO

### 5.3.2 Protein sidechains [i](#)

In the following table, the Percentiles column shows the percent sidechain outliers of the chain as a percentile score with respect to all X-ray entries followed by that with respect to entries of similar resolution.

The Analysed column shows the number of residues for which the sidechain conformation was analysed, and the total number of residues.

Mol	Chain	Analysed	Rotameric	Outliers	Percentiles
1	A	167/184 (91%)	148 (89%)	19 (11%)	5 20
1	B	165/184 (90%)	138 (84%)	27 (16%)	2 9
1	C	167/184 (91%)	149 (89%)	18 (11%)	6 22
1	D	165/184 (90%)	138 (84%)	27 (16%)	2 9
1	E	167/184 (91%)	148 (89%)	19 (11%)	5 20
1	F	165/184 (90%)	139 (84%)	26 (16%)	2 9
1	G	167/184 (91%)	150 (90%)	17 (10%)	7 24
1	H	165/184 (90%)	136 (82%)	29 (18%)	2 7
All	All	1328/1472 (90%)	1146 (86%)	182 (14%)	3 14

All (182) residues with a non-rotameric sidechain are listed below:

Mol	Chain	Res	Type
1	A	44	LEU
1	A	49	LEU
1	A	50	ASP
1	A	68	LEU
1	A	78	LEU
1	A	85	ILE
1	A	86	VAL
1	A	111	LEU
1	A	114	MET
1	A	136	MET
1	A	173	GLU
1	A	174	GLN
1	A	183	GLN
1	A	193	ASP

*Continued on next page...*



*Continued from previous page...*

<b>Mol</b>	<b>Chain</b>	<b>Res</b>	<b>Type</b>
1	A	220	LEU
1	A	223	ASP
1	A	224	ARG
1	A	225	ARG
1	A	231	GLU
1	B	32	THR
1	B	33	GLN
1	B	41	LEU
1	B	44	LEU
1	B	50	ASP
1	B	60	GLU
1	B	63	THR
1	B	71	HIS
1	B	72	VAL
1	B	76	ASP
1	B	85	ILE
1	B	102	GLU
1	B	111	LEU
1	B	126	ILE
1	B	128	ARG
1	B	129	VAL
1	B	134	ASN
1	B	136	MET
1	B	162	LEU
1	B	177	ARG
1	B	193	ASP
1	B	205	THR
1	B	210	LEU
1	B	220	LEU
1	B	222	SER
1	B	224	ARG
1	B	230	LEU
1	C	44	LEU
1	C	49	LEU
1	C	50	ASP
1	C	68	LEU
1	C	78	LEU
1	C	85	ILE
1	C	86	VAL
1	C	91	GLU
1	C	111	LEU
1	C	114	MET

*Continued on next page...*

*Continued from previous page...*

<b>Mol</b>	<b>Chain</b>	<b>Res</b>	<b>Type</b>
1	C	136	MET
1	C	173	GLU
1	C	174	GLN
1	C	183	GLN
1	C	193	ASP
1	C	223	ASP
1	C	224	ARG
1	C	231	GLU
1	D	32	THR
1	D	33	GLN
1	D	41	LEU
1	D	44	LEU
1	D	50	ASP
1	D	60	GLU
1	D	63	THR
1	D	71	HIS
1	D	72	VAL
1	D	76	ASP
1	D	85	ILE
1	D	102	GLU
1	D	111	LEU
1	D	126	ILE
1	D	128	ARG
1	D	129	VAL
1	D	134	ASN
1	D	139	MET
1	D	162	LEU
1	D	177	ARG
1	D	193	ASP
1	D	205	THR
1	D	210	LEU
1	D	220	LEU
1	D	222	SER
1	D	224	ARG
1	D	230	LEU
1	E	44	LEU
1	E	49	LEU
1	E	50	ASP
1	E	68	LEU
1	E	78	LEU
1	E	85	ILE
1	E	86	VAL

*Continued on next page...*

*Continued from previous page...*

<b>Mol</b>	<b>Chain</b>	<b>Res</b>	<b>Type</b>
1	E	91	GLU
1	E	111	LEU
1	E	114	MET
1	E	136	MET
1	E	173	GLU
1	E	174	GLN
1	E	183	GLN
1	E	193	ASP
1	E	220	LEU
1	E	223	ASP
1	E	224	ARG
1	E	231	GLU
1	F	32	THR
1	F	33	GLN
1	F	41	LEU
1	F	44	LEU
1	F	50	ASP
1	F	60	GLU
1	F	63	THR
1	F	71	HIS
1	F	72	VAL
1	F	76	ASP
1	F	85	ILE
1	F	102	GLU
1	F	111	LEU
1	F	126	ILE
1	F	128	ARG
1	F	129	VAL
1	F	134	ASN
1	F	162	LEU
1	F	177	ARG
1	F	193	ASP
1	F	205	THR
1	F	210	LEU
1	F	220	LEU
1	F	222	SER
1	F	224	ARG
1	F	230	LEU
1	G	44	LEU
1	G	49	LEU
1	G	50	ASP
1	G	68	LEU

*Continued on next page...*

*Continued from previous page...*

<b>Mol</b>	<b>Chain</b>	<b>Res</b>	<b>Type</b>
1	G	78	LEU
1	G	85	ILE
1	G	86	VAL
1	G	111	LEU
1	G	114	MET
1	G	136	MET
1	G	173	GLU
1	G	174	GLN
1	G	183	GLN
1	G	193	ASP
1	G	223	ASP
1	G	224	ARG
1	G	231	GLU
1	H	32	THR
1	H	33	GLN
1	H	41	LEU
1	H	44	LEU
1	H	50	ASP
1	H	60	GLU
1	H	63	THR
1	H	71	HIS
1	H	72	VAL
1	H	76	ASP
1	H	85	ILE
1	H	102	GLU
1	H	111	LEU
1	H	123	ARG
1	H	126	ILE
1	H	128	ARG
1	H	129	VAL
1	H	134	ASN
1	H	136	MET
1	H	139	MET
1	H	162	LEU
1	H	177	ARG
1	H	193	ASP
1	H	205	THR
1	H	210	LEU
1	H	220	LEU
1	H	222	SER
1	H	224	ARG
1	H	230	LEU

Sometimes sidechains can be flipped to improve hydrogen bonding and reduce clashes. All (16) such sidechains are listed below:

Mol	Chain	Res	Type
1	A	118	HIS
1	A	183	GLN
1	B	71	HIS
1	B	134	ASN
1	C	118	HIS
1	C	183	GLN
1	D	71	HIS
1	D	134	ASN
1	E	118	HIS
1	E	183	GLN
1	F	71	HIS
1	F	134	ASN
1	G	118	HIS
1	G	183	GLN
1	H	71	HIS
1	H	134	ASN

### 5.3.3 RNA [i](#)

There are no RNA molecules in this entry.

## 5.4 Non-standard residues in protein, DNA, RNA chains [i](#)

There are no non-standard protein/DNA/RNA residues in this entry.

## 5.5 Carbohydrates [i](#)

There are no monosaccharides in this entry.

## 5.6 Ligand geometry [i](#)

8 ligands are modelled in this entry.

In the following table, the Counts columns list the number of bonds (or angles) for which Mogul statistics could be retrieved, the number of bonds (or angles) that are observed in the model and the number of bonds (or angles) that are defined in the Chemical Component Dictionary. The Link column lists molecule types, if any, to which the group is linked. The Z score for a bond length (or angle) is the number of standard deviations the observed value is removed from the

expected value. A bond length (or angle) with  $|Z| > 2$  is considered an outlier worth inspection. RMSZ is the root-mean-square of all Z scores of the bond lengths (or angles).

Mol	Type	Chain	Res	Link	Bond lengths			Bond angles		
					Counts	RMSZ	# Z  > 2	Counts	RMSZ	# Z  > 2
2	ZCT	G	1	-	50,51,51	3.10	6 (12%)	60,80,80	1.51	10 (16%)
2	ZCT	B	1	-	50,51,51	3.27	9 (18%)	60,80,80	1.25	8 (13%)
2	ZCT	D	1	-	50,51,51	3.18	8 (16%)	60,80,80	1.57	10 (16%)
2	ZCT	H	1	-	50,51,51	3.15	9 (18%)	60,80,80	1.59	11 (18%)
2	ZCT	C	1	-	50,51,51	2.94	4 (8%)	60,80,80	2.03	13 (21%)
2	ZCT	A	1	-	50,51,51	3.04	5 (10%)	60,80,80	1.41	6 (10%)
2	ZCT	F	1	-	50,51,51	3.21	8 (16%)	60,80,80	1.41	9 (15%)
2	ZCT	E	1	-	50,51,51	2.96	7 (14%)	60,80,80	1.60	9 (15%)

In the following table, the Chirals column lists the number of chiral outliers, the number of chiral centers analysed, the number of these observed in the model and the number defined in the Chemical Component Dictionary. Similar counts are reported in the Torsion and Rings columns. '-' means no outliers of that kind were identified.

Mol	Type	Chain	Res	Link	Chirals	Torsions	Rings
2	ZCT	G	1	-	-	0/8/76/76	0/6/6/6
2	ZCT	B	1	-	-	1/8/76/76	0/6/6/6
2	ZCT	D	1	-	-	4/8/76/76	0/6/6/6
2	ZCT	H	1	-	-	4/8/76/76	0/6/6/6
2	ZCT	C	1	-	-	2/8/76/76	0/6/6/6
2	ZCT	A	1	-	-	3/8/76/76	0/6/6/6
2	ZCT	F	1	-	-	2/8/76/76	0/6/6/6
2	ZCT	E	1	-	-	2/8/76/76	0/6/6/6

All (56) bond length outliers are listed below:

Mol	Chain	Res	Type	Atoms	Z	Observed(Å)	Ideal(Å)
2	F	1	ZCT	C30-C21	15.63	1.50	1.34
2	B	1	ZCT	C30-C21	14.98	1.50	1.34
2	H	1	ZCT	C30-C21	14.90	1.50	1.34
2	D	1	ZCT	C14-C5	14.65	1.49	1.34
2	C	1	ZCT	C30-C21	14.30	1.49	1.34
2	D	1	ZCT	C30-C21	14.29	1.49	1.34
2	A	1	ZCT	C30-C21	14.26	1.49	1.34
2	B	1	ZCT	C14-C5	14.19	1.49	1.34
2	G	1	ZCT	C30-C21	14.03	1.49	1.34

*Continued on next page...*

*Continued from previous page...*

Mol	Chain	Res	Type	Atoms	Z	Observed(Å)	Ideal(Å)
2	H	1	ZCT	C14-C5	13.80	1.48	1.34
2	E	1	ZCT	C30-C21	13.78	1.48	1.34
2	G	1	ZCT	C14-C5	13.75	1.48	1.34
2	A	1	ZCT	C14-C5	13.31	1.48	1.34
2	F	1	ZCT	C14-C5	13.14	1.48	1.34
2	E	1	ZCT	C14-C5	12.91	1.47	1.34
2	C	1	ZCT	C14-C5	12.20	1.47	1.34
2	A	1	ZCT	C25-C24	3.84	1.41	1.37
2	B	1	ZCT	C25-C24	3.80	1.41	1.37
2	F	1	ZCT	C25-C24	3.66	1.40	1.37
2	E	1	ZCT	C25-C24	3.61	1.40	1.37
2	G	1	ZCT	C25-C24	3.60	1.40	1.37
2	G	1	ZCT	C9-C8	3.44	1.40	1.37
2	F	1	ZCT	C9-C8	3.41	1.40	1.37
2	C	1	ZCT	C15-C14	-3.18	1.46	1.51
2	H	1	ZCT	C25-C24	3.06	1.40	1.37
2	A	1	ZCT	C9-C8	3.03	1.40	1.37
2	B	1	ZCT	C11-C10	-2.86	1.37	1.43
2	D	1	ZCT	C11-C10	-2.63	1.38	1.43
2	B	1	ZCT	C9-C8	2.62	1.39	1.37
2	F	1	ZCT	C12-C13	2.62	1.53	1.46
2	F	1	ZCT	C12-C11	2.60	1.43	1.39
2	E	1	ZCT	C31-C30	-2.60	1.47	1.51
2	C	1	ZCT	C4-C5	2.50	1.54	1.51
2	D	1	ZCT	C25-C24	2.48	1.39	1.37
2	G	1	ZCT	C31-C30	-2.44	1.47	1.51
2	H	1	ZCT	C11-C10	-2.43	1.38	1.43
2	F	1	ZCT	C23-C22	2.42	1.52	1.46
2	H	1	ZCT	C31-C30	-2.39	1.48	1.51
2	B	1	ZCT	C20-C21	2.38	1.54	1.51
2	B	1	ZCT	C7-C6	2.37	1.52	1.46
2	D	1	ZCT	C9-C8	2.34	1.39	1.37
2	E	1	ZCT	C12-C11	2.30	1.43	1.39
2	G	1	ZCT	C14-C13	2.28	1.52	1.47
2	F	1	ZCT	C7-C6	2.27	1.52	1.46
2	B	1	ZCT	C23-C22	2.26	1.52	1.46
2	H	1	ZCT	C12-C13	2.23	1.52	1.46
2	H	1	ZCT	C27-C26	-2.18	1.39	1.43
2	B	1	ZCT	C27-C26	-2.17	1.39	1.43
2	H	1	ZCT	C9-C8	2.15	1.39	1.37
2	E	1	ZCT	C14-C13	2.13	1.51	1.47
2	E	1	ZCT	C9-C8	2.12	1.39	1.37

*Continued on next page...*

Continued from previous page...

Mol	Chain	Res	Type	Atoms	Z	Observed(Å)	Ideal(Å)
2	D	1	ZCT	C7-C6	2.11	1.51	1.46
2	H	1	ZCT	C14-C13	2.09	1.51	1.47
2	A	1	ZCT	C12-C11	2.08	1.42	1.39
2	D	1	ZCT	C14-C13	2.05	1.51	1.47
2	D	1	ZCT	C27-C26	-2.03	1.39	1.43

All (76) bond angle outliers are listed below:

Mol	Chain	Res	Type	Atoms	Z	Observed(°)	Ideal(°)
2	C	1	ZCT	C15-C14-C5	-6.75	114.33	121.70
2	C	1	ZCT	C24-C25-C26	-5.85	117.77	121.47
2	D	1	ZCT	C31-C30-C21	-5.71	115.46	121.70
2	E	1	ZCT	C24-C25-C26	-5.27	118.14	121.47
2	C	1	ZCT	C16-C15-C14	-5.13	106.10	112.49
2	F	1	ZCT	C3-C4-C5	4.43	116.91	111.91
2	C	1	ZCT	C3-C2-C1	4.24	119.38	112.56
2	H	1	ZCT	C3-C4-C5	4.08	116.51	111.91
2	E	1	ZCT	C3-C2-C1	4.05	119.08	112.56
2	G	1	ZCT	C15-C14-C5	-4.02	117.31	121.70
2	A	1	ZCT	C24-C25-C26	-3.90	119.00	121.47
2	G	1	ZCT	C32-C31-C30	-3.88	107.65	112.49
2	C	1	ZCT	C3-C4-C5	3.84	116.24	111.91
2	E	1	ZCT	C15-C14-C5	-3.79	117.56	121.70
2	C	1	ZCT	C4-C5-C6	3.62	125.36	118.16
2	D	1	ZCT	O10-C19-C18	3.59	114.17	106.73
2	F	1	ZCT	C3-O3-C15	3.56	118.53	112.52
2	G	1	ZCT	C24-C25-C26	-3.52	119.24	121.47
2	A	1	ZCT	C15-C14-C5	-3.50	117.88	121.70
2	E	1	ZCT	O3-C3-C2	3.43	113.82	106.73
2	H	1	ZCT	O3-C3-C4	3.42	115.84	109.53
2	H	1	ZCT	C24-C25-C26	-3.37	119.34	121.47
2	H	1	ZCT	C3-O3-C15	3.36	118.20	112.52
2	D	1	ZCT	C19-C20-C21	3.24	115.57	111.91
2	F	1	ZCT	C19-O10-C31	3.20	117.92	112.52
2	B	1	ZCT	C31-C30-C21	-3.17	118.24	121.70
2	D	1	ZCT	C19-C18-C17	3.15	117.63	112.56
2	E	1	ZCT	C32-C31-C30	-3.10	108.62	112.49
2	H	1	ZCT	C31-C30-C21	-3.05	118.37	121.70
2	A	1	ZCT	C19-O10-C31	2.93	117.47	112.52
2	C	1	ZCT	O6-C11-C10	2.93	122.85	116.64
2	H	1	ZCT	C19-O10-C31	2.89	117.40	112.52
2	D	1	ZCT	C24-C25-C26	-2.87	119.66	121.47

Continued on next page...



*Continued from previous page...*

Mol	Chain	Res	Type	Atoms	Z	Observed(°)	Ideal(°)
2	G	1	ZCT	C3-C4-C5	2.83	115.11	111.91
2	B	1	ZCT	C3-C4-C5	2.68	114.94	111.91
2	A	1	ZCT	C32-C31-C30	-2.58	109.27	112.49
2	H	1	ZCT	C8-C9-C10	-2.56	119.85	121.47
2	C	1	ZCT	C7-C6-C5	2.53	122.57	118.59
2	F	1	ZCT	C4-C5-C6	2.52	123.17	118.16
2	H	1	ZCT	O4-C6-C7	-2.49	117.28	121.99
2	F	1	ZCT	C12-C13-C14	2.48	122.76	118.53
2	F	1	ZCT	C7-C6-C5	2.48	122.49	118.59
2	A	1	ZCT	C8-C7-C6	-2.43	117.90	121.47
2	B	1	ZCT	C4-C5-C6	2.43	123.00	118.16
2	G	1	ZCT	C19-C18-C17	2.41	116.44	112.56
2	E	1	ZCT	O7-C13-C12	-2.41	117.43	121.99
2	D	1	ZCT	C19-O10-C31	2.41	116.59	112.52
2	F	1	ZCT	O7-C13-C14	-2.40	117.09	120.78
2	G	1	ZCT	C8-C9-C10	2.39	122.98	121.47
2	E	1	ZCT	C12-C11-C10	-2.36	117.69	120.80
2	D	1	ZCT	O10-C19-C20	2.34	113.85	109.53
2	G	1	ZCT	O2-C1-C2	2.33	121.54	114.07
2	D	1	ZCT	C8-C9-C10	-2.33	120.00	121.47
2	G	1	ZCT	C4-C5-C6	2.30	122.72	118.16
2	C	1	ZCT	O4-C6-C7	-2.29	117.67	121.99
2	H	1	ZCT	C32-C31-C30	-2.28	109.64	112.49
2	F	1	ZCT	C3-C2-C1	2.27	116.22	112.56
2	B	1	ZCT	C20-C21-C22	2.26	122.66	118.16
2	G	1	ZCT	O10-C19-C18	2.26	111.40	106.73
2	E	1	ZCT	C8-C7-C6	-2.25	118.17	121.47
2	C	1	ZCT	O13-C27-C26	2.22	121.35	116.64
2	B	1	ZCT	C3-O3-C15	2.18	116.20	112.52
2	B	1	ZCT	O7-C13-C12	-2.17	117.88	121.99
2	G	1	ZCT	C19-O10-C31	2.16	116.16	112.52
2	D	1	ZCT	O7-C13-C12	-2.15	117.93	121.99
2	C	1	ZCT	C23-C28-C29	2.14	123.40	119.64
2	H	1	ZCT	C3-C2-C1	-2.12	109.14	112.56
2	C	1	ZCT	O7-C13-C12	-2.10	118.02	121.99
2	F	1	ZCT	C15-C14-C5	-2.09	119.41	121.70
2	D	1	ZCT	C4-C5-C6	2.09	122.31	118.16
2	B	1	ZCT	C12-C13-C14	2.07	122.06	118.53
2	E	1	ZCT	C31-C30-C21	-2.06	119.45	121.70
2	B	1	ZCT	O3-C3-C4	2.05	113.31	109.53
2	C	1	ZCT	C19-O10-C31	2.04	115.97	112.52
2	H	1	ZCT	C7-C6-C5	2.04	121.79	118.59

*Continued on next page...*

*Continued from previous page...*

Mol	Chain	Res	Type	Atoms	Z	Observed(°)	Ideal(°)
2	A	1	ZCT	C23-C22-C21	2.04	121.79	118.59

There are no chirality outliers.

All (18) torsion outliers are listed below:

Mol	Chain	Res	Type	Atoms
2	B	1	ZCT	C17-C18-C19-O10
2	C	1	ZCT	C17-C18-C19-O10
2	C	1	ZCT	C17-C18-C19-C20
2	D	1	ZCT	C17-C18-C19-O10
2	E	1	ZCT	C1-C2-C3-O3
2	E	1	ZCT	C1-C2-C3-C4
2	F	1	ZCT	C1-C2-C3-O3
2	F	1	ZCT	C1-C2-C3-C4
2	H	1	ZCT	C17-C18-C19-O10
2	H	1	ZCT	C17-C18-C19-C20
2	A	1	ZCT	C1-C2-C3-O3
2	H	1	ZCT	C1-C2-C3-O3
2	D	1	ZCT	C17-C18-C19-C20
2	H	1	ZCT	C1-C2-C3-C4
2	A	1	ZCT	O2-C1-C2-C3
2	D	1	ZCT	O9-C17-C18-C19
2	A	1	ZCT	O1-C1-C2-C3
2	D	1	ZCT	O8-C17-C18-C19

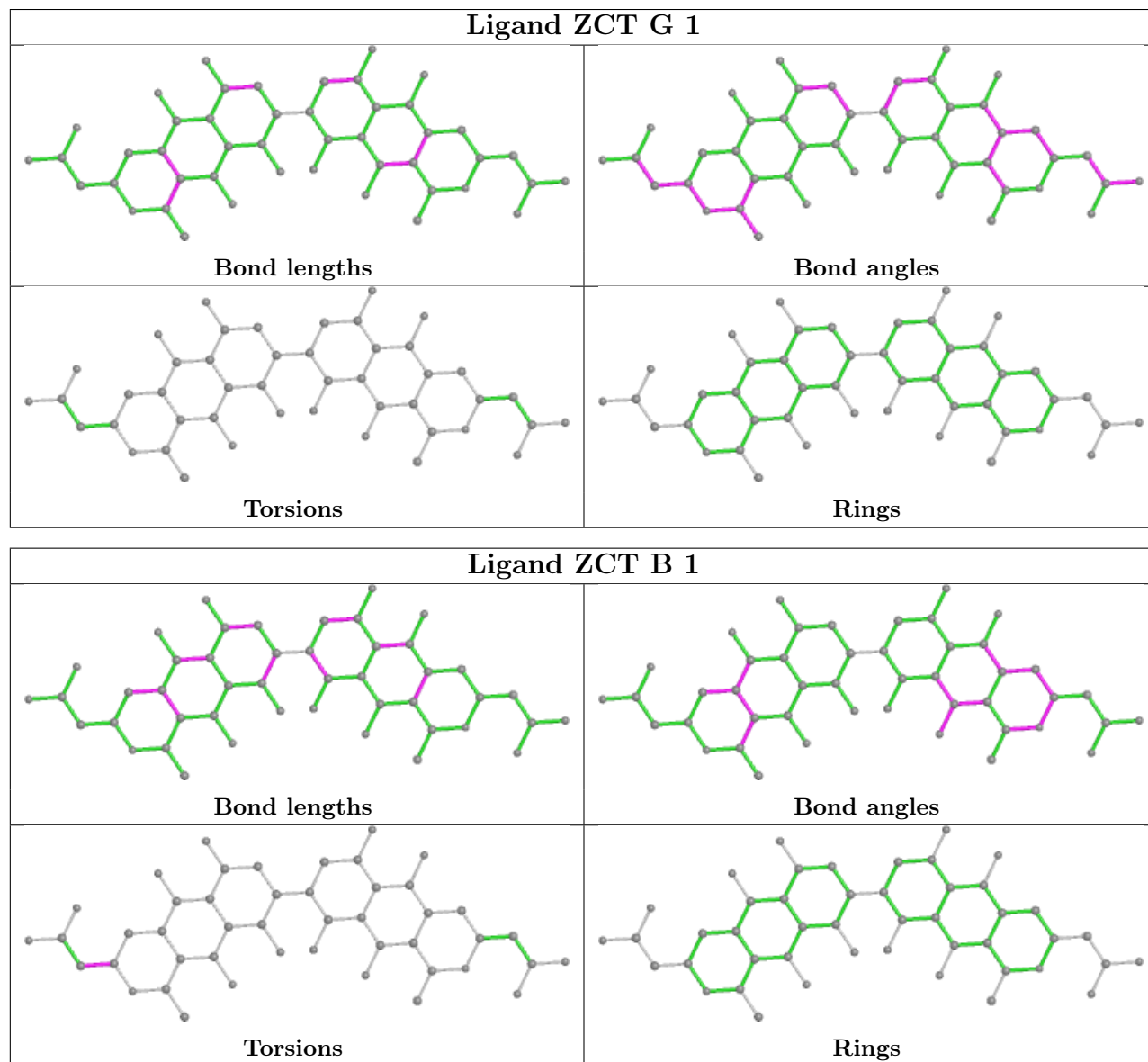
There are no ring outliers.

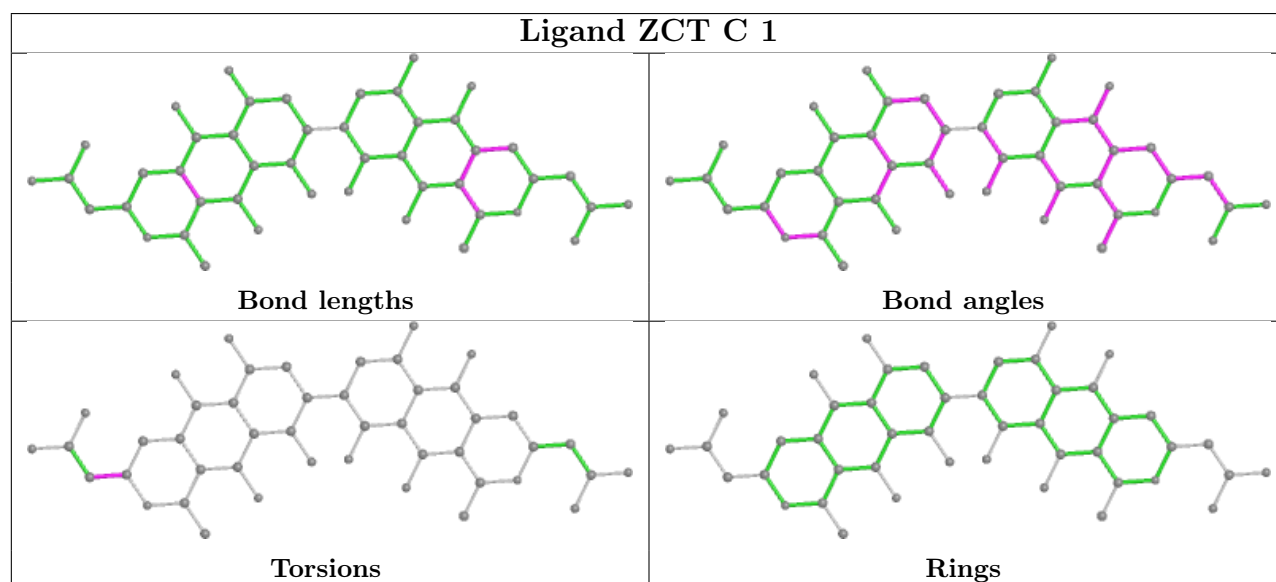
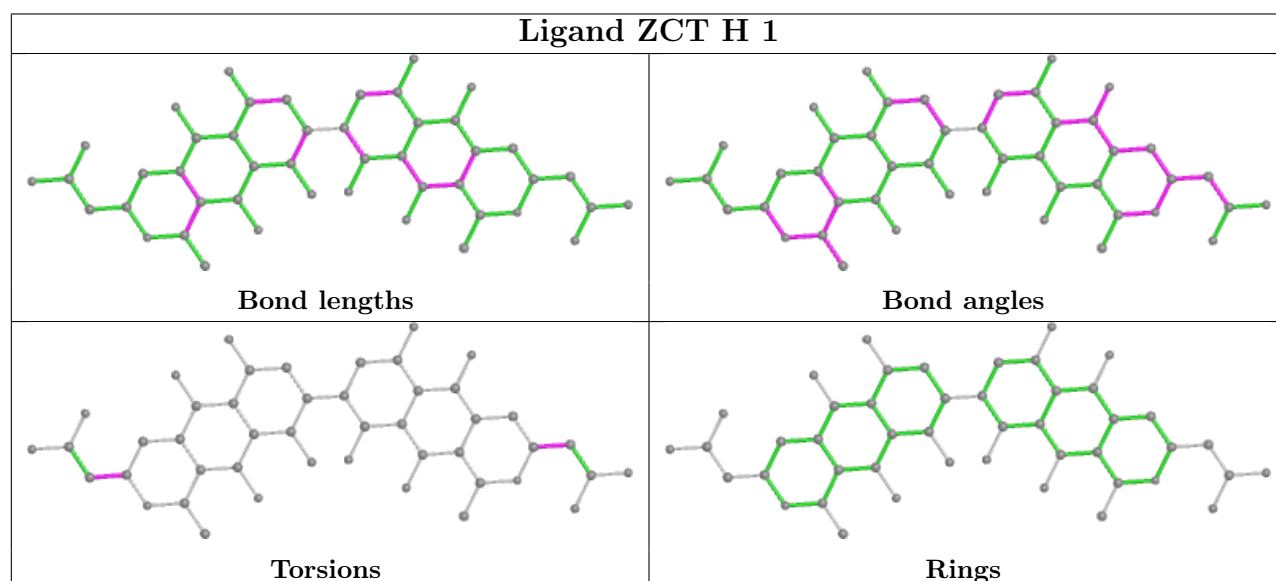
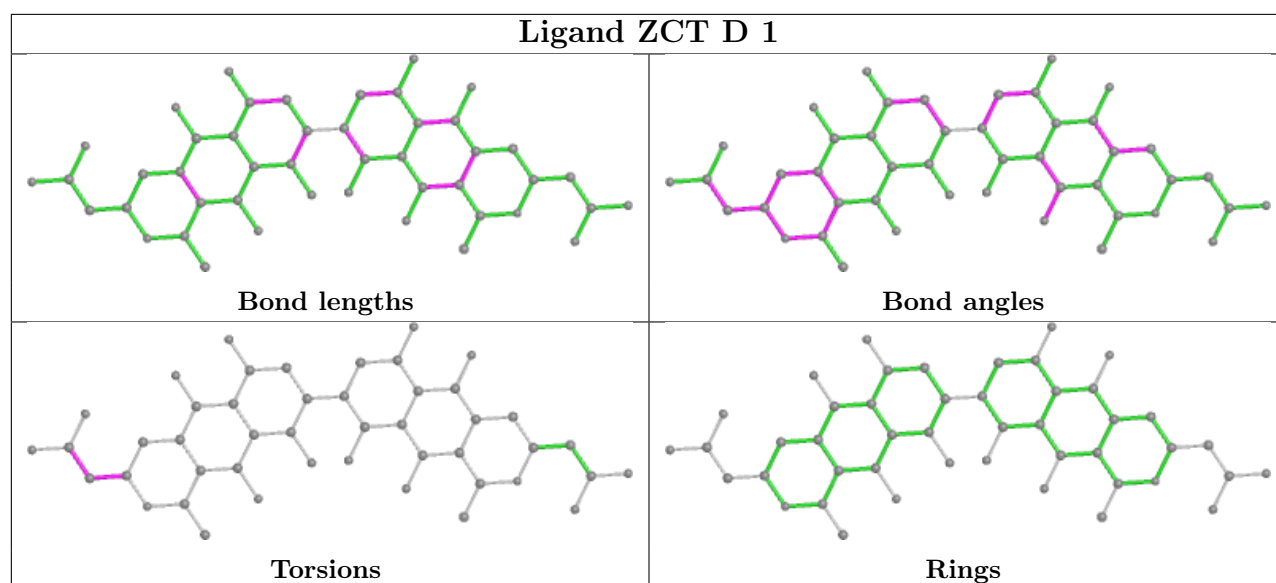
8 monomers are involved in 80 short contacts:

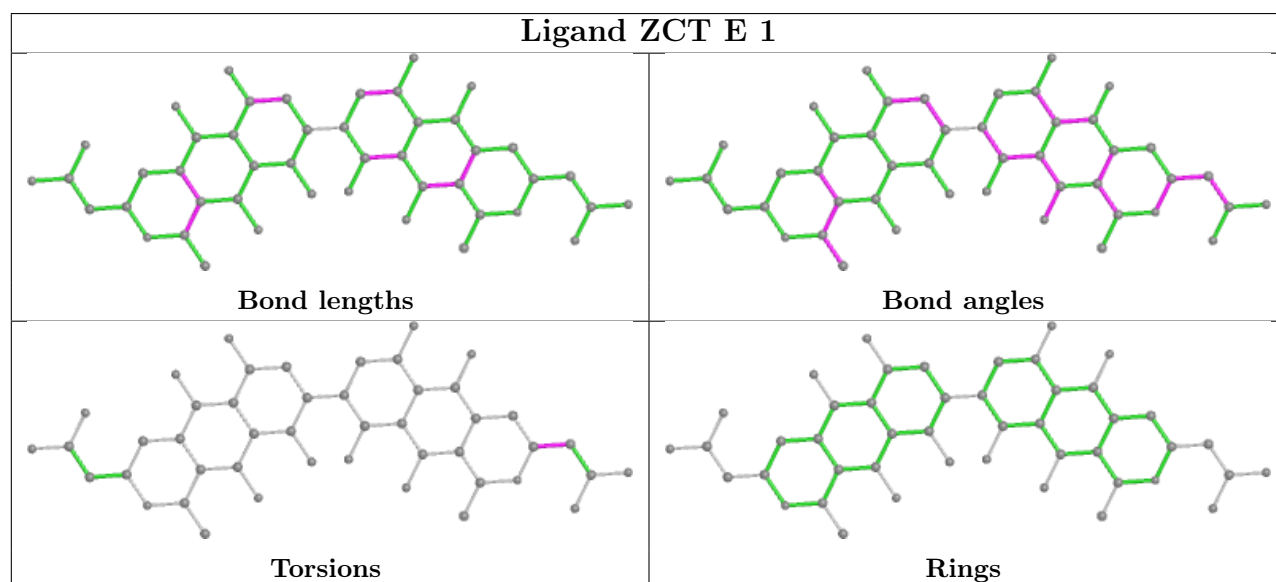
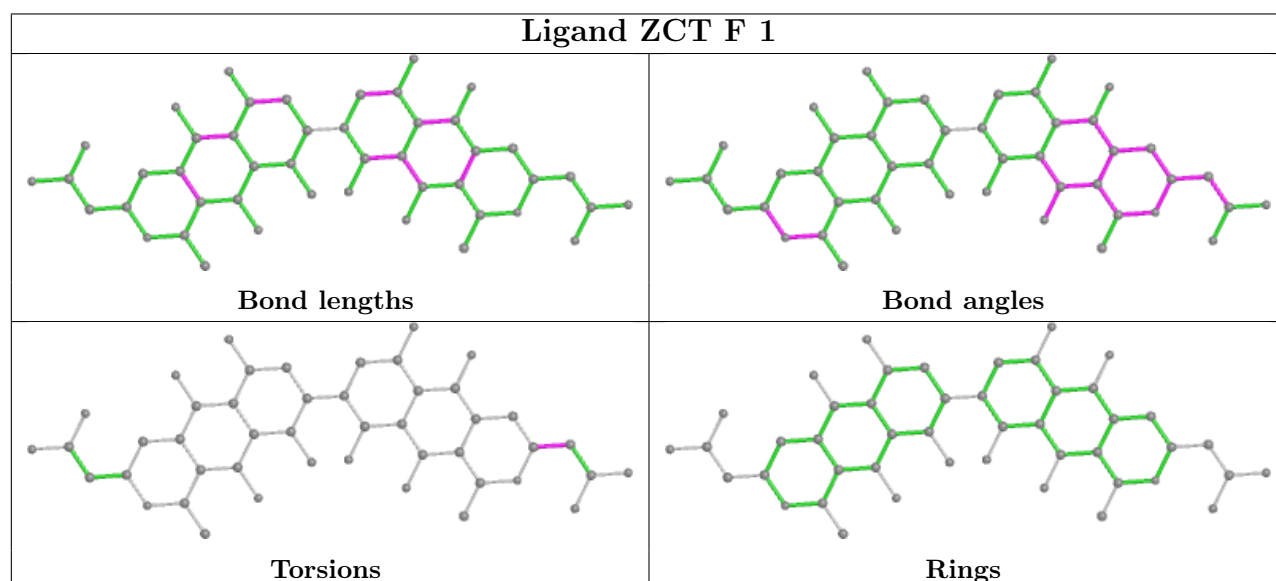
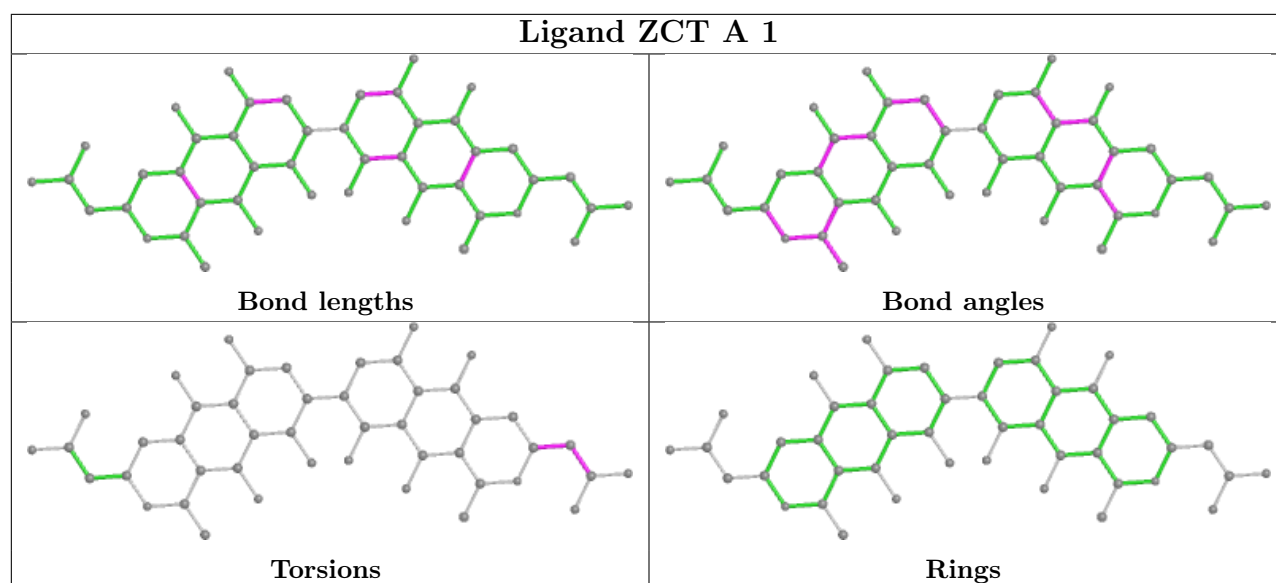
Mol	Chain	Res	Type	Clashes	Symm-Clashes
2	G	1	ZCT	12	0
2	B	1	ZCT	9	0
2	D	1	ZCT	9	0
2	H	1	ZCT	6	0
2	C	1	ZCT	14	0
2	A	1	ZCT	13	0
2	F	1	ZCT	5	0
2	E	1	ZCT	12	0

The following is a two-dimensional graphical depiction of Mogul quality analysis of bond lengths, bond angles, torsion angles, and ring geometry for all instances of the Ligand of Interest. In addition, ligands with molecular weight > 250 and outliers as shown on the validation Tables will

also be included. For torsion angles, if less than 5% of the Mogul distribution of torsion angles is within 10 degrees of the torsion angle in question, then that torsion angle is considered an outlier. Any bond that is central to one or more torsion angles identified as an outlier by Mogul will be highlighted in the graph. For rings, the root-mean-square deviation (RMSD) between the ring in question and similar rings identified by Mogul is calculated over all ring torsion angles. If the average RMSD is greater than 60 degrees and the minimal RMSD between the ring in question and any Mogul-identified rings is also greater than 60 degrees, then that ring is considered an outlier. The outliers are highlighted in purple. The color gray indicates Mogul did not find sufficient equivalents in the CSD to analyse the geometry.







## 5.7 Other polymers [i](#)

There are no such residues in this entry.

## 5.8 Polymer linkage issues [i](#)

There are no chain breaks in this entry.

## 6 Fit of model and data

### 6.1 Protein, DNA and RNA chains

In the following table, the column labelled ‘#RSRZ> 2’ contains the number (and percentage) of RSRZ outliers, followed by percent RSRZ outliers for the chain as percentile scores relative to all X-ray entries and entries of similar resolution. The OWAB column contains the minimum, median, 95<sup>th</sup> percentile and maximum values of the occupancy-weighted average B-factor per residue. The column labelled ‘Q< 0.9’ lists the number of (and percentage) of residues with an average occupancy less than 0.9.

Mol	Chain	Analysed	<RSRZ>	#RSRZ>2	OWAB(Å <sup>2</sup> )	Q<0.9
1	A	213/234 (91%)	-0.18	4 (1%) 66 43	41, 57, 80, 90	1 (0%)
1	B	209/234 (89%)	-0.17	2 (0%) 82 63	44, 57, 81, 95	0
1	C	213/234 (91%)	-0.23	1 (0%) 91 79	42, 55, 72, 83	1 (0%)
1	D	209/234 (89%)	-0.06	3 (1%) 75 53	44, 58, 84, 97	0
1	E	213/234 (91%)	-0.18	4 (1%) 66 43	42, 57, 78, 88	1 (0%)
1	F	209/234 (89%)	-0.14	2 (0%) 82 63	44, 58, 82, 94	0
1	G	213/234 (91%)	-0.16	1 (0%) 91 79	44, 57, 74, 82	1 (0%)
1	H	209/234 (89%)	-0.12	2 (0%) 82 63	43, 58, 82, 97	0
All	All	1688/1872 (90%)	-0.15	19 (1%) 80 60	41, 57, 80, 97	4 (0%)

All (19) RSRZ outliers are listed below:

Mol	Chain	Res	Type	RSRZ
1	E	243	GLU	4.2
1	F	29	ALA	3.7
1	H	179	PRO	3.7
1	B	179	PRO	3.5
1	A	243	GLU	2.9
1	D	179	PRO	2.9
1	D	188	ALA	2.9
1	G	243	GLU	2.9
1	C	28	MET	2.6
1	B	188	ALA	2.6
1	A	242	GLY	2.6
1	F	179	PRO	2.5
1	E	244	ALA	2.5
1	E	245	ALA	2.3
1	H	188	ALA	2.3
1	E	242	GLY	2.2

*Continued on next page...*

*Continued from previous page...*

Mol	Chain	Res	Type	RSRZ
1	D	192	ALA	2.2
1	A	245	ALA	2.2
1	A	244	ALA	2.0

## 6.2 Non-standard residues in protein, DNA, RNA chains [i](#)

There are no non-standard protein/DNA/RNA residues in this entry.

## 6.3 Carbohydrates [i](#)

There are no monosaccharides in this entry.

## 6.4 Ligands [i](#)

In the following table, the Atoms column lists the number of modelled atoms in the group and the number defined in the chemical component dictionary. The B-factors column lists the minimum, median, 95<sup>th</sup> percentile and maximum values of B factors of atoms in the group. The column labelled 'Q< 0.9' lists the number of atoms with occupancy less than 0.9.

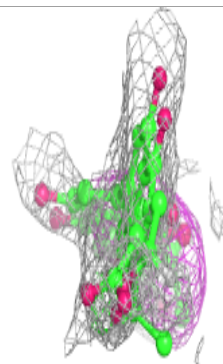
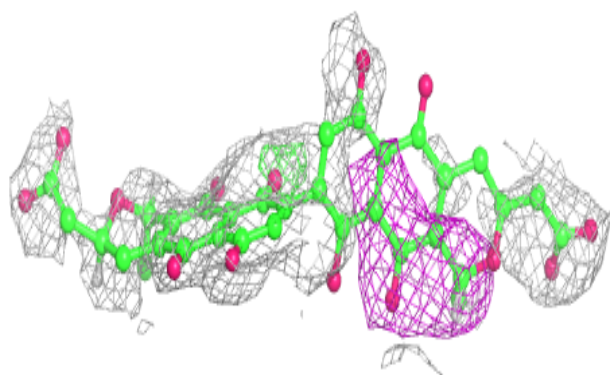
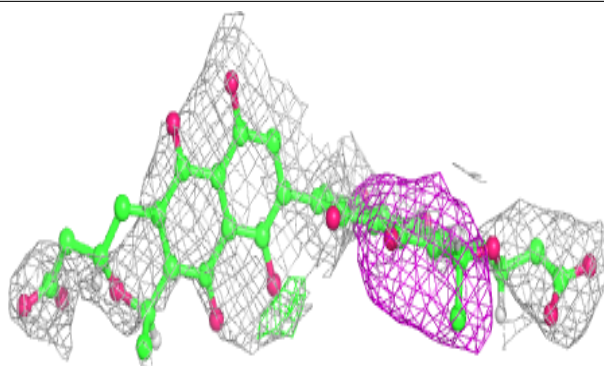
Mol	Type	Chain	Res	Atoms	RSCC	RSR	B-factors(Å <sup>2</sup> )	Q<0.9
2	ZCT	B	1	46/46	0.50	0.57	90,90,90,90	0
2	ZCT	D	1	46/46	0.59	0.48	90,90,90,90	0
2	ZCT	G	1	46/46	0.61	0.41	90,90,90,90	0
2	ZCT	F	1	46/46	0.62	0.54	90,90,90,90	0
2	ZCT	H	1	46/46	0.62	0.46	90,90,90,90	0
2	ZCT	E	1	46/46	0.65	0.41	90,90,90,90	0
2	ZCT	A	1	46/46	0.70	0.37	90,90,90,90	0
2	ZCT	C	1	46/46	0.73	0.36	90,90,90,90	0

The following is a graphical depiction of the model fit to experimental electron density of all instances of the Ligand of Interest. In addition, ligands with molecular weight > 250 and outliers as shown on the geometry validation Tables will also be included. Each fit is shown from different orientation to approximate a three-dimensional view.

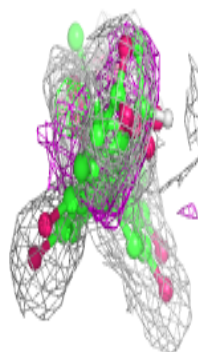
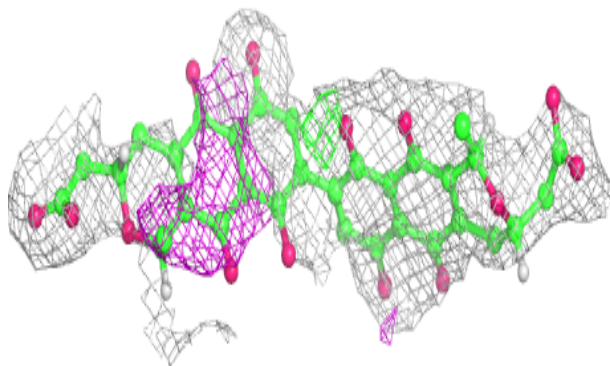
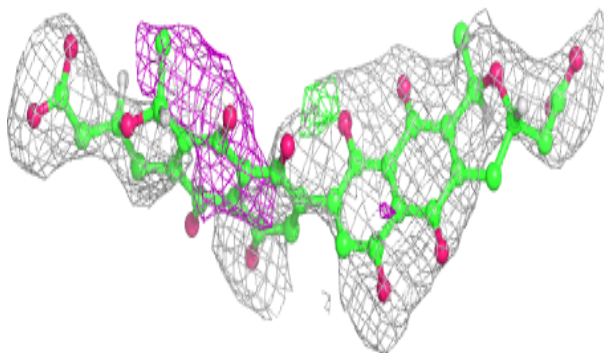


**Electron density around ZCT B 1:**

$2mF_o-DF_c$  (at 0.7 rmsd) in gray  
 $mF_o-DF_c$  (at 3 rmsd) in purple (negative)  
and green (positive)

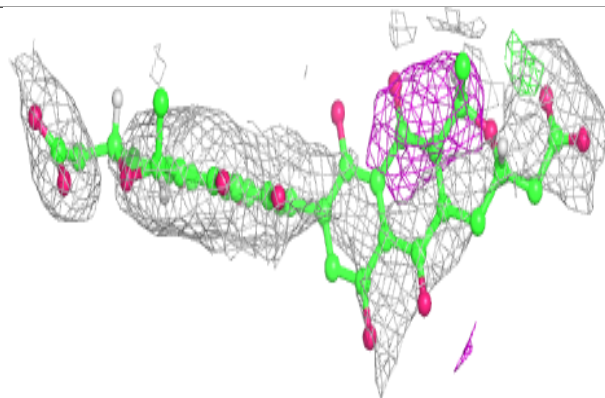
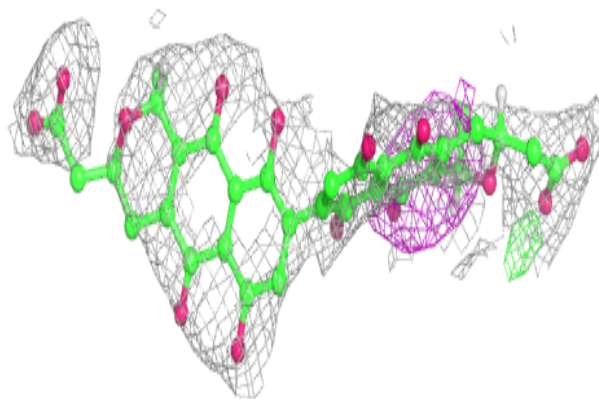
**Electron density around ZCT D 1:**

$2mF_o-DF_c$  (at 0.7 rmsd) in gray  
 $mF_o-DF_c$  (at 3 rmsd) in purple (negative)  
and green (positive)

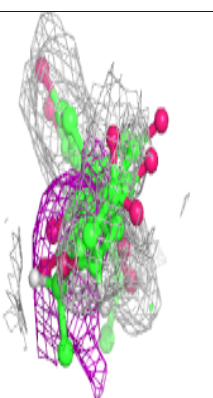
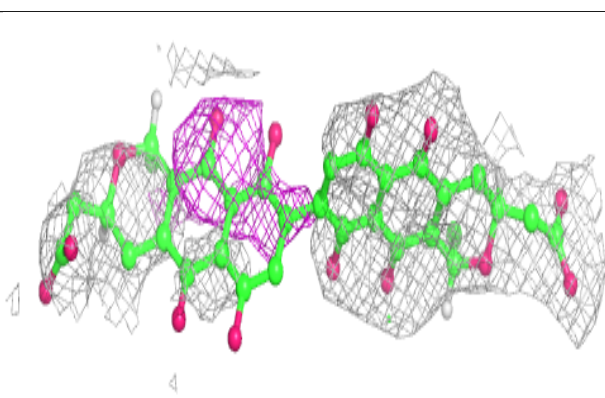
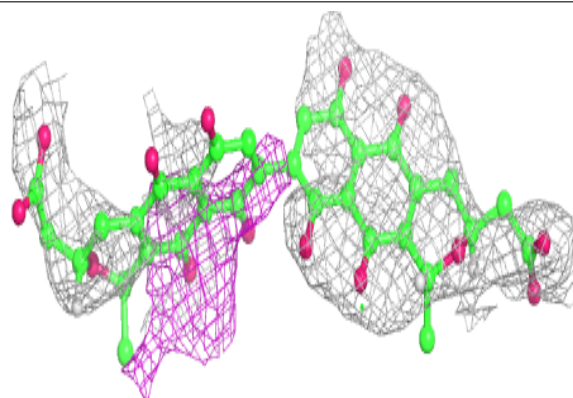


**Electron density around ZCT G 1:**

$2mF_o-DF_c$  (at 0.7 rmsd) in gray  
 $mF_o-DF_c$  (at 3 rmsd) in purple (negative)  
and green (positive)

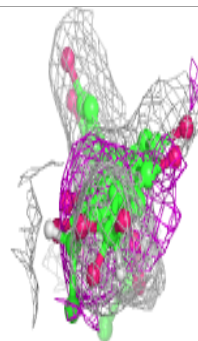
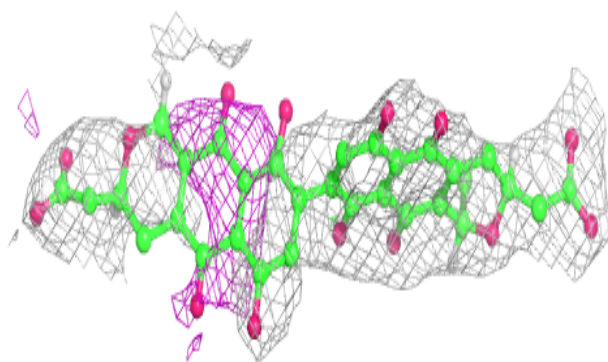
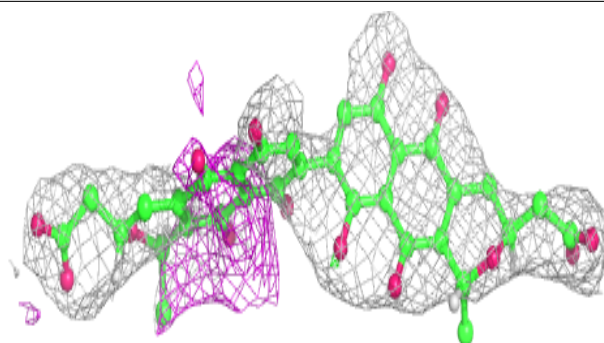
**Electron density around ZCT F 1:**

$2mF_o-DF_c$  (at 0.7 rmsd) in gray  
 $mF_o-DF_c$  (at 3 rmsd) in purple (negative)  
and green (positive)

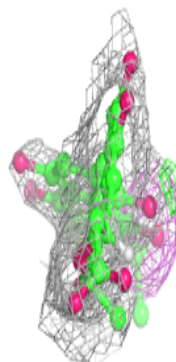
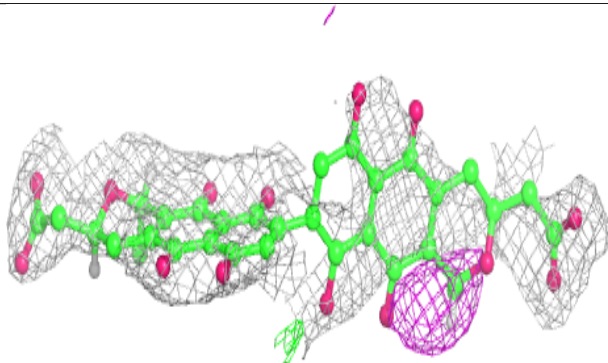
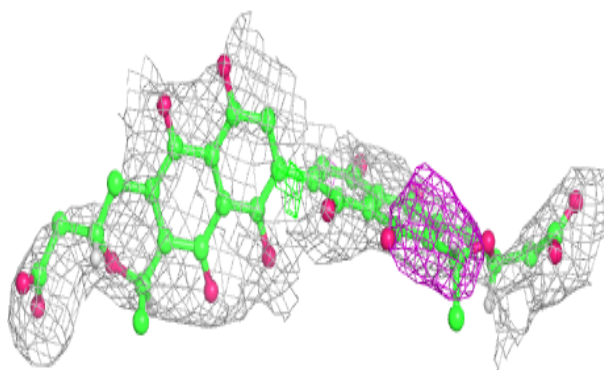


**Electron density around ZCT H 1:**

$2mF_o-DF_c$  (at 0.7 rmsd) in gray  
 $mF_o-DF_c$  (at 3 rmsd) in purple (negative)  
and green (positive)

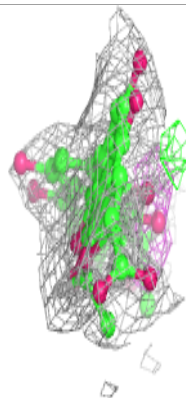
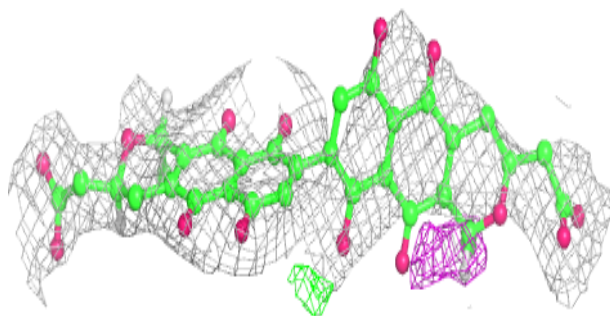
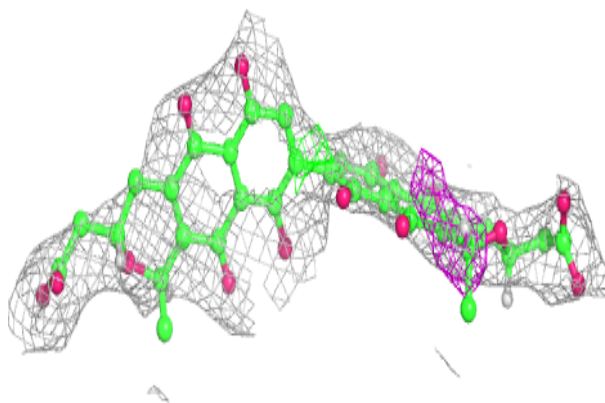
**Electron density around ZCT E 1:**

$2mF_o-DF_c$  (at 0.7 rmsd) in gray  
 $mF_o-DF_c$  (at 3 rmsd) in purple (negative)  
and green (positive)

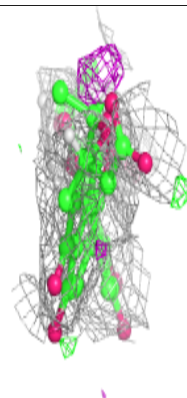
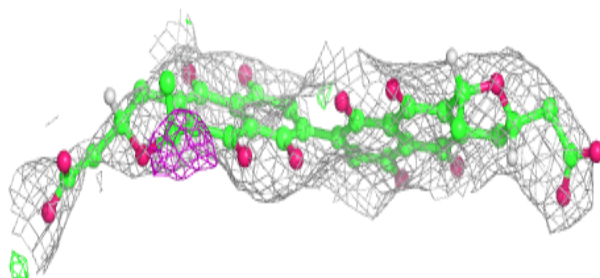
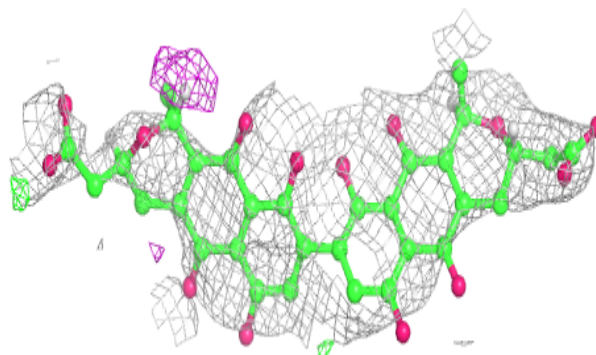


**Electron density around ZCT A 1:**

$2mF_o-DF_c$  (at 0.7 rmsd) in gray  
 $mF_o-DF_c$  (at 3 rmsd) in purple (negative)  
and green (positive)

**Electron density around ZCT C 1:**

$2mF_o-DF_c$  (at 0.7 rmsd) in gray  
 $mF_o-DF_c$  (at 3 rmsd) in purple (negative)  
and green (positive)



## 6.5 Other polymers [i](#)

There are no such residues in this entry.