



# Full wwPDB X-ray Structure Validation Report ⓘ

Jun 26, 2024 – 01:23 AM EDT

PDB ID : 7B62  
Title : Crystal structure of SARS-CoV-2 spike protein N-terminal domain in complex with biliverdin  
Authors : Pye, V.E.; Rosa, A.; Roustan, C.; Cherepanov, P.  
Deposited on : 2020-12-07  
Resolution : 1.82 Å(reported)

This is a Full wwPDB X-ray Structure Validation Report for a publicly released PDB entry.

We welcome your comments at [validation@mail.wwpdb.org](mailto:validation@mail.wwpdb.org)

A user guide is available at

<https://www.wwpdb.org/validation/2017/XrayValidationReportHelp>

with specific help available everywhere you see the ⓘ symbol.

The types of validation reports are described at

<http://www.wwpdb.org/validation/2017/FAQs#types>.

---

The following versions of software and data (see [references ⓘ](#)) were used in the production of this report:

MolProbity : 4.02b-467  
Mogul : 1.8.5 (274361), CSD as541be (2020)  
Xtriage (Phenix) : 1.13  
EDS : 2.37.1  
buster-report : 1.1.7 (2018)  
Percentile statistics : 20191225.v01 (using entries in the PDB archive December 25th 2019)  
Refmac : 5.8.0158  
CCP4 : 7.0.044 (Gargrove)  
Ideal geometry (proteins) : Engh & Huber (2001)  
Ideal geometry (DNA, RNA) : Parkinson et al. (1996)  
Validation Pipeline (wwPDB-VP) : 2.37.1

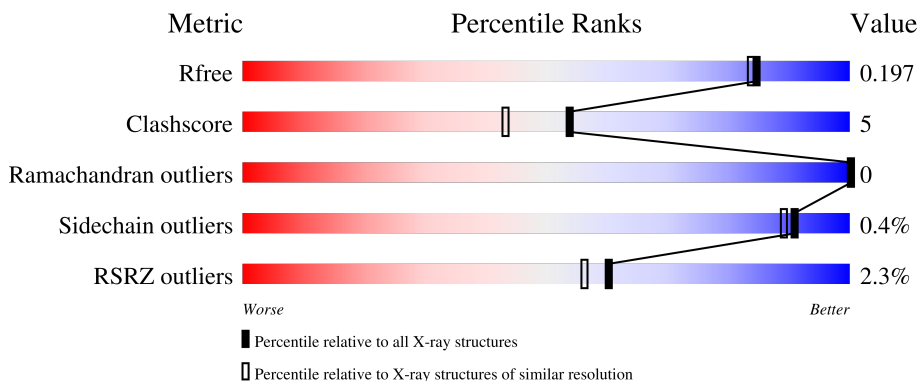
# 1 Overall quality at a glance

The following experimental techniques were used to determine the structure:

*X-RAY DIFFRACTION*

The reported resolution of this entry is 1.82 Å.

Percentile scores (ranging between 0-100) for global validation metrics of the entry are shown in the following graphic. The table shows the number of entries on which the scores are based.



Metric	Whole archive (#Entries)	Similar resolution (#Entries, resolution range(Å))
$R_{free}$	130704	7484 (1.84-1.80)
Clashscore	141614	8401 (1.84-1.80)
Ramachandran outliers	138981	8290 (1.84-1.80)
Sidechain outliers	138945	8290 (1.84-1.80)
RSRZ outliers	127900	7371 (1.84-1.80)

The table below summarises the geometric issues observed across the polymeric chains and their fit to the electron density. The red, orange, yellow and green segments of the lower bar indicate the fraction of residues that contain outliers for  $\geq 3$ , 2, 1 and 0 types of geometric quality criteria respectively. A grey segment represents the fraction of residues that are not modelled. The numeric value for each fraction is indicated below the corresponding segment, with a dot representing fractions  $\leq 5\%$ . The upper red bar (where present) indicates the fraction of residues that have poor fit to the electron density. The numeric value is given above the bar.

Mol	Chain	Length	Quality of chain
1	A	322	

The following table lists non-polymeric compounds, carbohydrate monomers and non-standard residues in protein, DNA, RNA chains that are outliers for geometric or electron-density-fit criteria:

Mol	Type	Chain	Res	Chirality	Geometry	Clashes	Electron density
5	PEG	A	1313	-	-	X	-

## 2 Entry composition

There are 8 unique types of molecules in this entry. The entry contains 3096 atoms, of which 0 are hydrogens and 0 are deuteriums.

In the tables below, the ZeroOcc column contains the number of atoms modelled with zero occupancy, the AltConf column contains the number of residues with at least one atom in alternate conformation and the Trace column contains the number of residues modelled with at most 2 atoms.

- Molecule 1 is a protein called Spike glycoprotein.

Mol	Chain	Residues	Atoms					ZeroOcc	AltConf	Trace
			Total	C	N	O	S			
1	A	306	2511	1624	412	464	11	0	12	0

There are 11 discrepancies between the modelled and reference sequences:

Chain	Residue	Modelled	Actual	Comment	Reference
A	312	SER	-	expression tag	UNP P0DTC2
A	313	SER	-	expression tag	UNP P0DTC2
A	314	GLY	-	expression tag	UNP P0DTC2
A	315	LEU	-	expression tag	UNP P0DTC2
A	316	GLU	-	expression tag	UNP P0DTC2
A	317	VAL	-	expression tag	UNP P0DTC2
A	318	LEU	-	expression tag	UNP P0DTC2
A	319	PHE	-	expression tag	UNP P0DTC2
A	320	GLN	-	expression tag	UNP P0DTC2
A	321	GLY	-	expression tag	UNP P0DTC2
A	322	PRO	-	expression tag	UNP P0DTC2

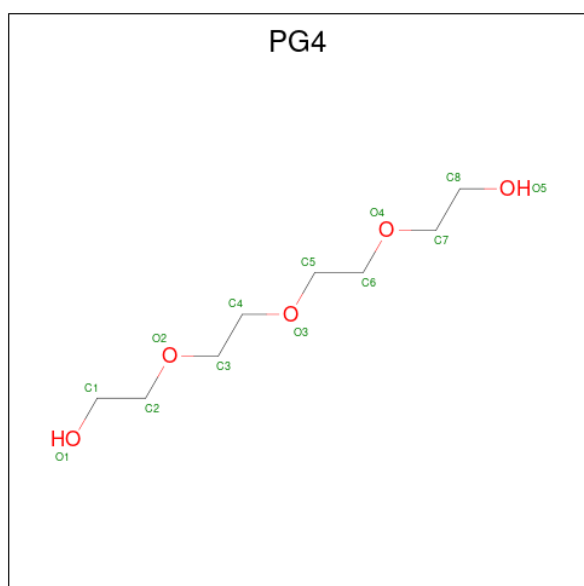
- Molecule 2 is BILIVERDINE IX ALPHA (three-letter code: BLA) (formula:  $C_{33}H_{34}N_4O_6$ ) (labeled as "Ligand of Interest" by depositor).



Continued from previous page...

Mol	Chain	Residues	Atoms				ZeroOcc	AltConf
3	A	1	Total	C	N	O	0	0
			14	8	1	5		
3	A	1	Total	C	N	O	0	0
			14	8	1	5		
3	A	1	Total	C	N	O	0	0
			14	8	1	5		
3	A	1	Total	C	N	O	0	0
			14	8	1	5		

- Molecule 4 is TETRAETHYLENE GLYCOL (three-letter code: PG4) (formula: C<sub>8</sub>H<sub>18</sub>O<sub>5</sub>).



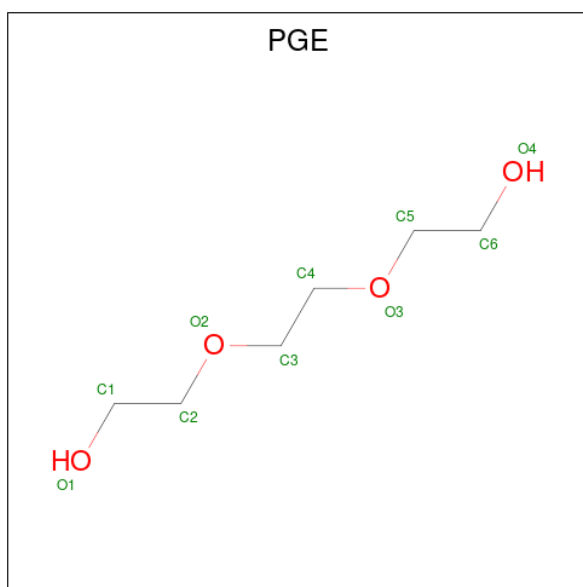
Mol	Chain	Residues	Atoms		ZeroOcc	AltConf
4	A	1	Total	C O	0	0
			13	8 5		
4	A	1	Total	C O	0	0
			13	8 5		

- Molecule 5 is DI(HYDROXYETHYL)ETHER (three-letter code: PEG) (formula: C<sub>4</sub>H<sub>10</sub>O<sub>3</sub>).



Mol	Chain	Residues	Atoms			ZeroOcc	AltConf
5	A	1	Total	C	O	0	0
			7	4	3		
5	A	1	Total	C	O	0	0
			7	4	3		
5	A	1	Total	C	O	0	0
			7	4	3		

- Molecule 6 is TRIETHYLENE GLYCOL (three-letter code: PGE) (formula: C<sub>6</sub>H<sub>14</sub>O<sub>4</sub>).



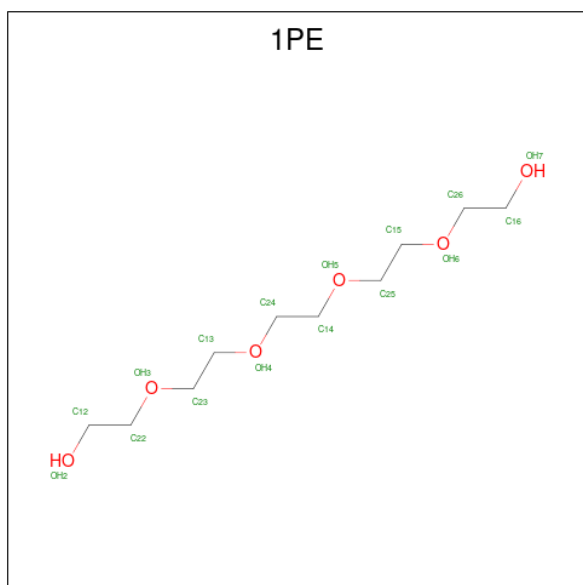
Mol	Chain	Residues	Atoms			ZeroOcc	AltConf
6	A	1	Total	C	O	0	0
			10	6	4		

*Continued on next page...*

Continued from previous page...

Mol	Chain	Residues	Atoms			ZeroOcc	AltConf
6	A	1	Total	C	O	0	0
			10	6	4		
6	A	1	Total	C	O	0	0
			10	6	4		

- Molecule 7 is PENTAETHYLENE GLYCOL (three-letter code: 1PE) (formula: C<sub>10</sub>H<sub>22</sub>O<sub>6</sub>).



Mol	Chain	Residues	Atoms			ZeroOcc	AltConf
7	A	1	Total	C	O	0	0
			16	10	6		

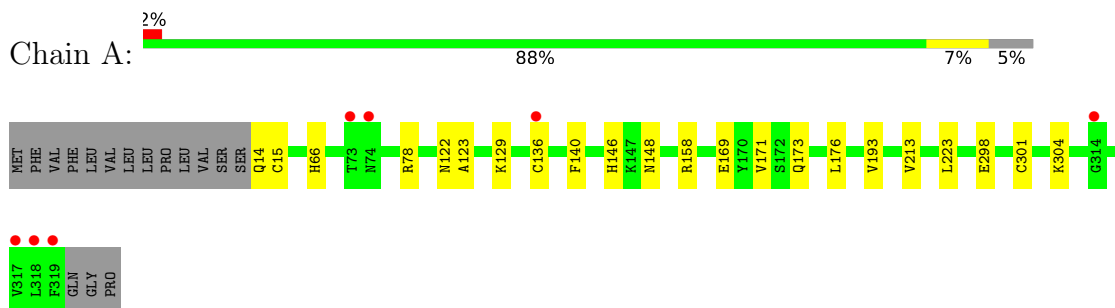
- Molecule 8 is water.

Mol	Chain	Residues	Atoms		ZeroOcc	AltConf
8	A	351	Total	O	0	0
			351	351		

### 3 Residue-property plots [i](#)

These plots are drawn for all protein, RNA, DNA and oligosaccharide chains in the entry. The first graphic for a chain summarises the proportions of the various outlier classes displayed in the second graphic. The second graphic shows the sequence view annotated by issues in geometry and electron density. Residues are color-coded according to the number of geometric quality criteria for which they contain at least one outlier: green = 0, yellow = 1, orange = 2 and red = 3 or more. A red dot above a residue indicates a poor fit to the electron density ( $RSRZ > 2$ ). Stretches of 2 or more consecutive residues without any outlier are shown as a green connector. Residues present in the sample, but not in the model, are shown in grey.

- Molecule 1: Spike glycoprotein





## 4 Data and refinement statistics

Property	Value	Source
Space group	C 2 2 21	Depositor
Cell constants a, b, c, $\alpha$ , $\beta$ , $\gamma$	98.07Å 100.19Å 85.97Å 90.00° 90.00° 90.00°	Depositor
Resolution (Å)	50.09 – 1.82 50.10 – 1.82	Depositor EDS
% Data completeness (in resolution range)	99.4 (50.09-1.82) 99.4 (50.10-1.82)	Depositor EDS
$R_{merge}$	0.17	Depositor
$R_{sym}$	(Not available)	Depositor
$\langle I/\sigma(I) \rangle$ <sup>1</sup>	1.12 (at 1.82Å)	Xtrriage
Refinement program	PHENIX 1.19rc4_4035, PHENIX 1.19rc4_4035	Depositor
R, $R_{free}$	0.164 , 0.200 0.162 , 0.197	Depositor DCC
$R_{free}$ test set	1917 reflections (5.04%)	wwPDB-VP
Wilson B-factor (Å <sup>2</sup> )	28.2	Xtrriage
Anisotropy	0.441	Xtrriage
Bulk solvent $k_{sol}$ (e/Å <sup>3</sup> ), $B_{sol}$ (Å <sup>2</sup> )	0.32 , 43.7	EDS
L-test for twinning <sup>2</sup>	$\langle  L  \rangle = 0.50$ , $\langle L^2 \rangle = 0.33$	Xtrriage
Estimated twinning fraction	0.020 for -k,-h,-l	Xtrriage
$F_o, F_c$ correlation	0.97	EDS
Total number of atoms	3096	wwPDB-VP
Average B, all atoms (Å <sup>2</sup> )	32.0	wwPDB-VP

Xtrriage's analysis on translational NCS is as follows: *The largest off-origin peak in the Patterson function is 6.01% of the height of the origin peak. No significant pseudotranslation is detected.*

<sup>1</sup>Intensities estimated from amplitudes.

<sup>2</sup>Theoretical values of  $\langle |L| \rangle$ ,  $\langle L^2 \rangle$  for acentric reflections are 0.5, 0.333 respectively for untwinned datasets, and 0.375, 0.2 for perfectly twinned datasets.

## 5 Model quality [i](#)

### 5.1 Standard geometry [i](#)

Bond lengths and bond angles in the following residue types are not validated in this section: 1PE, BLA, PEG, NAG, PG4, PGE

The Z score for a bond length (or angle) is the number of standard deviations the observed value is removed from the expected value. A bond length (or angle) with  $|Z| > 5$  is considered an outlier worth inspection. RMSZ is the root-mean-square of all Z scores of the bond lengths (or angles).

Mol	Chain	Bond lengths		Bond angles	
		RMSZ	# Z  >5	RMSZ	# Z  >5
1	A	0.50	0/2610	0.66	0/3550

There are no bond length outliers.

There are no bond angle outliers.

There are no chirality outliers.

There are no planarity outliers.

### 5.2 Too-close contacts [i](#)

In the following table, the Non-H and H(model) columns list the number of non-hydrogen atoms and hydrogen atoms in the chain respectively. The H(added) column lists the number of hydrogen atoms added and optimized by MolProbity. The Clashes column lists the number of clashes within the asymmetric unit, whereas Symm-Clashes lists symmetry-related clashes.

Mol	Chain	Non-H	H(model)	H(added)	Clashes	Symm-Clashes
1	A	2511	0	2454	27	0
2	A	43	0	32	1	0
3	A	98	0	91	1	0
4	A	26	0	36	0	0
5	A	21	0	30	5	0
6	A	30	0	42	1	0
7	A	16	0	22	0	0
8	A	351	0	0	9	0
All	All	3096	0	2707	29	0

The all-atom clashscore is defined as the number of clashes found per 1000 atoms (including hydrogen atoms). The all-atom clashscore for this structure is 5.

All (29) close contacts within the same asymmetric unit are listed below, sorted by their clash

magnitude.

Atom-1	Atom-2	Interatomic distance (Å)	Clash overlap (Å)
1:A:15[B]:CYS:SG	8:A:1534:HOH:O	2.37	0.81
1:A:173[B]:GLN:HG2	5:A:1313:PEG:H32	1.70	0.74
1:A:14:GLN:HE21	6:A:1315:PGE:H62	1.52	0.73
1:A:14:GLN:N	1:A:14:GLN:OE1	2.26	0.68
1:A:15[B]:CYS:HB3	1:A:136:CYS:SG	2.35	0.66
1:A:148:ASN:ND2	8:A:1406:HOH:O	2.29	0.66
1:A:146:HIS:HE1	1:A:148:ASN:HB2	1.63	0.62
1:A:146:HIS:CE1	1:A:148:ASN:HB2	2.35	0.60
1:A:14:GLN:N	8:A:1409:HOH:O	2.35	0.59
1:A:173[B]:GLN:HA	5:A:1313:PEG:H12	1.85	0.57
1:A:173[A]:GLN:HA	5:A:1313:PEG:H12	1.86	0.56
1:A:129:LYS:HE2	1:A:169:GLU:OE1	2.07	0.55
2:A:1301:BLA:HBC1	2:A:1301:BLA:HMC1	1.92	0.52
3:A:1303:NAG:H82	8:A:1696:HOH:O	2.09	0.51
1:A:298:GLU:OE2	8:A:1401:HOH:O	2.20	0.48
1:A:301:CYS:O	1:A:304[B]:LYS:HD2	2.16	0.45
1:A:171:VAL:O	5:A:1313:PEG:H41	2.17	0.45
1:A:146:HIS:CE1	1:A:148:ASN:HD22	2.35	0.44
1:A:122:ASN:O	1:A:123:ALA:HB3	2.18	0.44
1:A:193:VAL:HG23	1:A:223:LEU:HD22	2.00	0.43
1:A:66[A]:HIS:HD2	8:A:1445:HOH:O	2.01	0.43
1:A:173[B]:GLN:NE2	8:A:1430:HOH:O	2.52	0.43
1:A:129:LYS:HG2	1:A:169:GLU:HG3	2.02	0.42
1:A:173[B]:GLN:OE1	8:A:1402:HOH:O	2.22	0.42
1:A:14:GLN:N	1:A:14:GLN:CD	2.73	0.41
1:A:176:LEU:HD12	1:A:176:LEU:HA	1.84	0.41
1:A:78:ARG:NE	8:A:1431:HOH:O	2.52	0.41
1:A:140:PHE:CZ	1:A:158:ARG:HD2	2.56	0.41
1:A:173[B]:GLN:CG	5:A:1313:PEG:H32	2.48	0.40

There are no symmetry-related clashes.

## 5.3 Torsion angles [i](#)

### 5.3.1 Protein backbone [i](#)

In the following table, the Percentiles column shows the percent Ramachandran outliers of the chain as a percentile score with respect to all X-ray entries followed by that with respect to entries of similar resolution.

The Analysed column shows the number of residues for which the backbone conformation was analysed, and the total number of residues.

Mol	Chain	Analysed	Favoured	Allowed	Outliers	Percentiles	
1	A	316/322 (98%)	303 (96%)	13 (4%)	0	100	100

There are no Ramachandran outliers to report.

### 5.3.2 Protein sidechains [i](#)

In the following table, the Percentiles column shows the percent sidechain outliers of the chain as a percentile score with respect to all X-ray entries followed by that with respect to entries of similar resolution.

The Analysed column shows the number of residues for which the sidechain conformation was analysed, and the total number of residues.

Mol	Chain	Analysed	Rotameric	Outliers	Percentiles	
1	A	286/289 (99%)	285 (100%)	1 (0%)	92	91

All (1) residues with a non-rotameric sidechain are listed below:

Mol	Chain	Res	Type
1	A	213	VAL

Sometimes sidechains can be flipped to improve hydrogen bonding and reduce clashes. All (3) such sidechains are listed below:

Mol	Chain	Res	Type
1	A	14	GLN
1	A	74	ASN
1	A	148	ASN

### 5.3.3 RNA [i](#)

There are no RNA molecules in this entry.

## 5.4 Non-standard residues in protein, DNA, RNA chains [i](#)

There are no non-standard protein/DNA/RNA residues in this entry.

## 5.5 Carbohydrates [i](#)

There are no monosaccharides in this entry.

## 5.6 Ligand geometry [i](#)

17 ligands are modelled in this entry.

In the following table, the Counts columns list the number of bonds (or angles) for which Mogul statistics could be retrieved, the number of bonds (or angles) that are observed in the model and the number of bonds (or angles) that are defined in the Chemical Component Dictionary. The Link column lists molecule types, if any, to which the group is linked. The Z score for a bond length (or angle) is the number of standard deviations the observed value is removed from the expected value. A bond length (or angle) with  $|Z| > 2$  is considered an outlier worth inspection. RMSZ is the root-mean-square of all Z scores of the bond lengths (or angles).

Mol	Type	Chain	Res	Link	Bond lengths			Bond angles		
					Counts	RMSZ	# Z  > 2	Counts	RMSZ	# Z  > 2
3	NAG	A	1303	1	14,14,15	0.59	0	17,19,21	0.51	0
3	NAG	A	1307	1	14,14,15	0.30	0	17,19,21	0.39	0
3	NAG	A	1302	1	14,14,15	0.19	0	17,19,21	0.37	0
4	PG4	A	1310	-	12,12,12	0.25	0	11,11,11	0.16	0
3	NAG	A	1306	1	14,14,15	0.17	0	17,19,21	0.67	0
6	PGE	A	1315	-	9,9,9	0.11	0	8,8,8	0.25	0
3	NAG	A	1305	1	14,14,15	0.39	0	17,19,21	0.68	1 (5%)
5	PEG	A	1312	-	6,6,6	0.20	0	5,5,5	0.05	0
6	PGE	A	1314	-	9,9,9	0.22	0	8,8,8	0.14	0
7	1PE	A	1317	-	15,15,15	0.16	0	14,14,14	0.31	0
5	PEG	A	1313	-	6,6,6	0.24	0	5,5,5	0.26	0
5	PEG	A	1311	-	6,6,6	0.11	0	5,5,5	0.20	0
3	NAG	A	1304	1	14,14,15	0.35	0	17,19,21	0.61	0
3	NAG	A	1308	1	14,14,15	0.71	1 (7%)	17,19,21	0.76	1 (5%)
6	PGE	A	1316	-	9,9,9	0.16	0	8,8,8	0.24	0
2	BLA	A	1301	-	42,46,46	0.94	1 (2%)	53,67,67	0.92	2 (3%)
4	PG4	A	1309	-	12,12,12	0.20	0	11,11,11	0.14	0

In the following table, the Chirals column lists the number of chiral outliers, the number of chiral centers analysed, the number of these observed in the model and the number defined in the Chemical Component Dictionary. Similar counts are reported in the Torsion and Rings columns. '-' means no outliers of that kind were identified.

Mol	Type	Chain	Res	Link	Chirals	Torsions	Rings
3	NAG	A	1303	1	-	0/6/23/26	0/1/1/1
3	NAG	A	1307	1	-	2/6/23/26	0/1/1/1

*Continued on next page...*

Continued from previous page...

Mol	Type	Chain	Res	Link	Chirals	Torsions	Rings
3	NAG	A	1302	1	-	2/6/23/26	0/1/1/1
4	PG4	A	1310	-	-	2/10/10/10	-
3	NAG	A	1306	1	-	2/6/23/26	0/1/1/1
6	PGE	A	1315	-	-	4/7/7/7	-
3	NAG	A	1305	1	-	0/6/23/26	0/1/1/1
5	PEG	A	1312	-	-	0/4/4/4	-
6	PGE	A	1314	-	-	5/7/7/7	-
7	1PE	A	1317	-	-	5/13/13/13	-
5	PEG	A	1313	-	-	1/4/4/4	-
5	PEG	A	1311	-	-	0/4/4/4	-
3	NAG	A	1304	1	-	0/6/23/26	0/1/1/1
3	NAG	A	1308	1	-	2/6/23/26	0/1/1/1
6	PGE	A	1316	-	-	3/7/7/7	-
2	BLA	A	1301	-	-	3/26/74/74	0/4/4/4
4	PG4	A	1309	-	-	3/10/10/10	-

All (2) bond length outliers are listed below:

Mol	Chain	Res	Type	Atoms	Z	Observed(Å)	Ideal(Å)
2	A	1301	BLA	CHA-C4D	5.11	1.39	1.35
3	A	1308	NAG	O5-C1	2.27	1.47	1.43

All (4) bond angle outliers are listed below:

Mol	Chain	Res	Type	Atoms	Z	Observed(°)	Ideal(°)
2	A	1301	BLA	C1A-CHA-C4D	-4.04	123.98	128.81
2	A	1301	BLA	CHA-C4D-ND	-3.86	123.47	128.83
3	A	1308	NAG	C1-O5-C5	2.47	115.54	112.19
3	A	1305	NAG	C1-O5-C5	2.04	114.96	112.19

There are no chirality outliers.

All (34) torsion outliers are listed below:

Mol	Chain	Res	Type	Atoms
3	A	1307	NAG	O5-C5-C6-O6
5	A	1313	PEG	C1-C2-O2-C3
3	A	1306	NAG	C8-C7-N2-C2
3	A	1306	NAG	O7-C7-N2-C2
3	A	1307	NAG	C4-C5-C6-O6

Continued on next page...

*Continued from previous page...*

Mol	Chain	Res	Type	Atoms
6	A	1315	PGE	O3-C5-C6-O4
7	A	1317	1PE	OH6-C15-C25-OH5
3	A	1302	NAG	C4-C5-C6-O6
2	A	1301	BLA	C3D-CAD-CBD-CGD
7	A	1317	1PE	C13-C23-OH3-C22
6	A	1315	PGE	C6-C5-O3-C4
6	A	1314	PGE	C6-C5-O3-C4
3	A	1302	NAG	O5-C5-C6-O6
7	A	1317	1PE	C15-C25-OH5-C14
7	A	1317	1PE	C23-C13-OH4-C24
6	A	1314	PGE	O3-C5-C6-O4
6	A	1314	PGE	C1-C2-O2-C3
4	A	1309	PG4	C8-C7-O4-C6
7	A	1317	1PE	OH5-C14-C24-OH4
4	A	1310	PG4	C5-C6-O4-C7
6	A	1314	PGE	C4-C3-O2-C2
3	A	1308	NAG	C3-C2-N2-C7
6	A	1316	PGE	C1-C2-O2-C3
3	A	1308	NAG	O5-C5-C6-O6
6	A	1315	PGE	C4-C3-O2-C2
6	A	1316	PGE	C4-C3-O2-C2
4	A	1310	PG4	C1-C2-O2-C3
4	A	1309	PG4	C1-C2-O2-C3
2	A	1301	BLA	CAA-CBA-CGA-O2A
2	A	1301	BLA	CAA-CBA-CGA-O1A
4	A	1309	PG4	O2-C3-C4-O3
6	A	1316	PGE	C3-C4-O3-C5
6	A	1315	PGE	C1-C2-O2-C3
6	A	1314	PGE	O2-C3-C4-O3

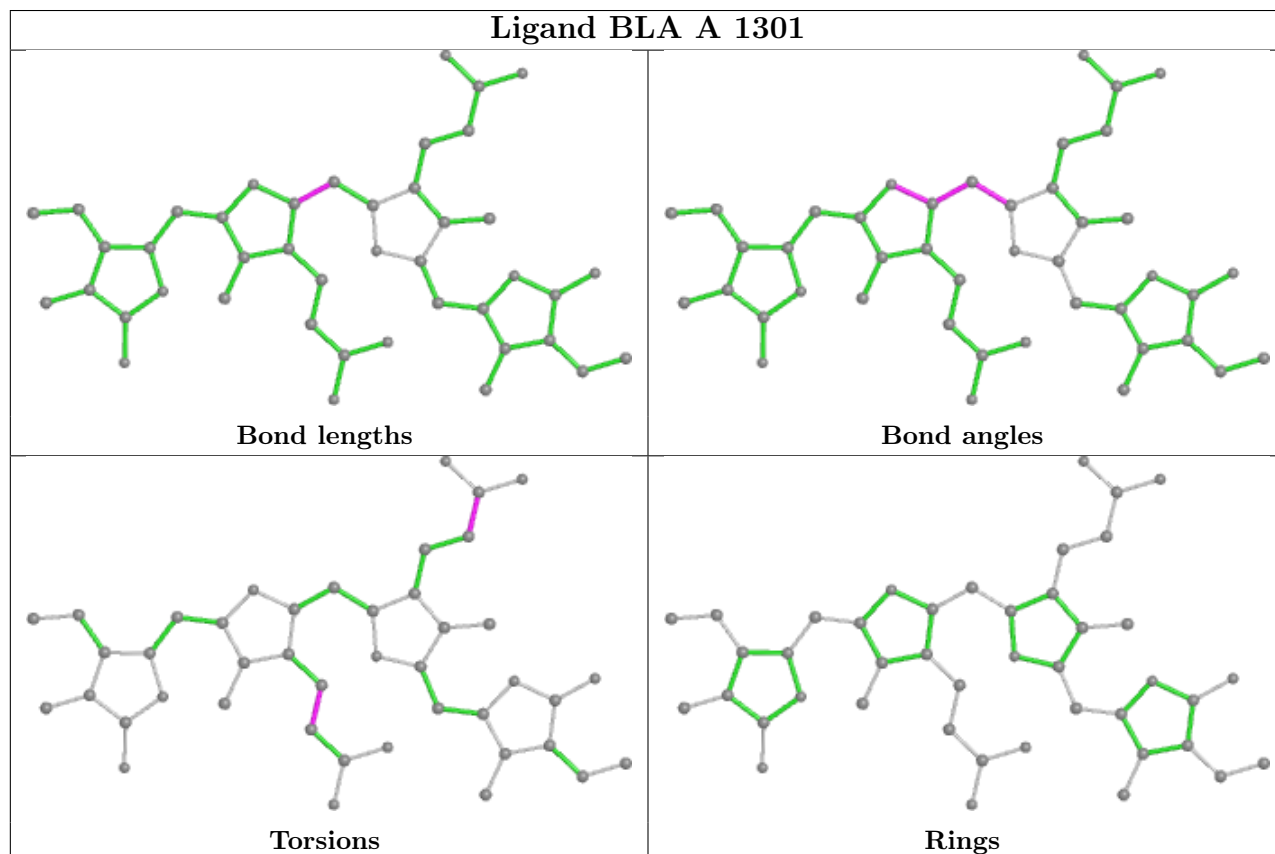
There are no ring outliers.

4 monomers are involved in 8 short contacts:

Mol	Chain	Res	Type	Clashes	Symm-Clashes
3	A	1303	NAG	1	0
6	A	1315	PGE	1	0
5	A	1313	PEG	5	0
2	A	1301	BLA	1	0

The following is a two-dimensional graphical depiction of Mogul quality analysis of bond lengths, bond angles, torsion angles, and ring geometry for all instances of the Ligand of Interest. In addition, ligands with molecular weight > 250 and outliers as shown on the validation Tables will

also be included. For torsion angles, if less than 5% of the Mogul distribution of torsion angles is within 10 degrees of the torsion angle in question, then that torsion angle is considered an outlier. Any bond that is central to one or more torsion angles identified as an outlier by Mogul will be highlighted in the graph. For rings, the root-mean-square deviation (RMSD) between the ring in question and similar rings identified by Mogul is calculated over all ring torsion angles. If the average RMSD is greater than 60 degrees and the minimal RMSD between the ring in question and any Mogul-identified rings is also greater than 60 degrees, then that ring is considered an outlier. The outliers are highlighted in purple. The color gray indicates Mogul did not find sufficient equivalents in the CSD to analyse the geometry.



## 5.7 Other polymers [i](#)

There are no such residues in this entry.

## 5.8 Polymer linkage issues [i](#)

There are no chain breaks in this entry.



## 6 Fit of model and data [i](#)

### 6.1 Protein, DNA and RNA chains [i](#)

In the following table, the column labelled '#RSRZ > 2' contains the number (and percentage) of RSRZ outliers, followed by percent RSRZ outliers for the chain as percentile scores relative to all X-ray entries and entries of similar resolution. The OWAB column contains the minimum, median, 95<sup>th</sup> percentile and maximum values of the occupancy-weighted average B-factor per residue. The column labelled 'Q < 0.9' lists the number of (and percentage) of residues with an average occupancy less than 0.9.

Mol	Chain	Analysed	<RSRZ>	#RSRZ>2	OWAB(Å <sup>2</sup> )	Q<0.9
1	A	306/322 (95%)	-0.20	7 (2%) 60 56	17, 27, 47, 75	0

All (7) RSRZ outliers are listed below:

Mol	Chain	Res	Type	RSRZ
1	A	317	VAL	6.5
1	A	318	LEU	4.0
1	A	73	THR	3.4
1	A	319	PHE	3.3
1	A	74	ASN	2.2
1	A	136	CYS	2.2
1	A	314	GLY	2.0

### 6.2 Non-standard residues in protein, DNA, RNA chains [i](#)

There are no non-standard protein/DNA/RNA residues in this entry.

### 6.3 Carbohydrates [i](#)

There are no monosaccharides in this entry.

### 6.4 Ligands [i](#)

In the following table, the Atoms column lists the number of modelled atoms in the group and the number defined in the chemical component dictionary. The B-factors column lists the minimum, median, 95<sup>th</sup> percentile and maximum values of B factors of atoms in the group. The column labelled 'Q < 0.9' lists the number of atoms with occupancy less than 0.9.

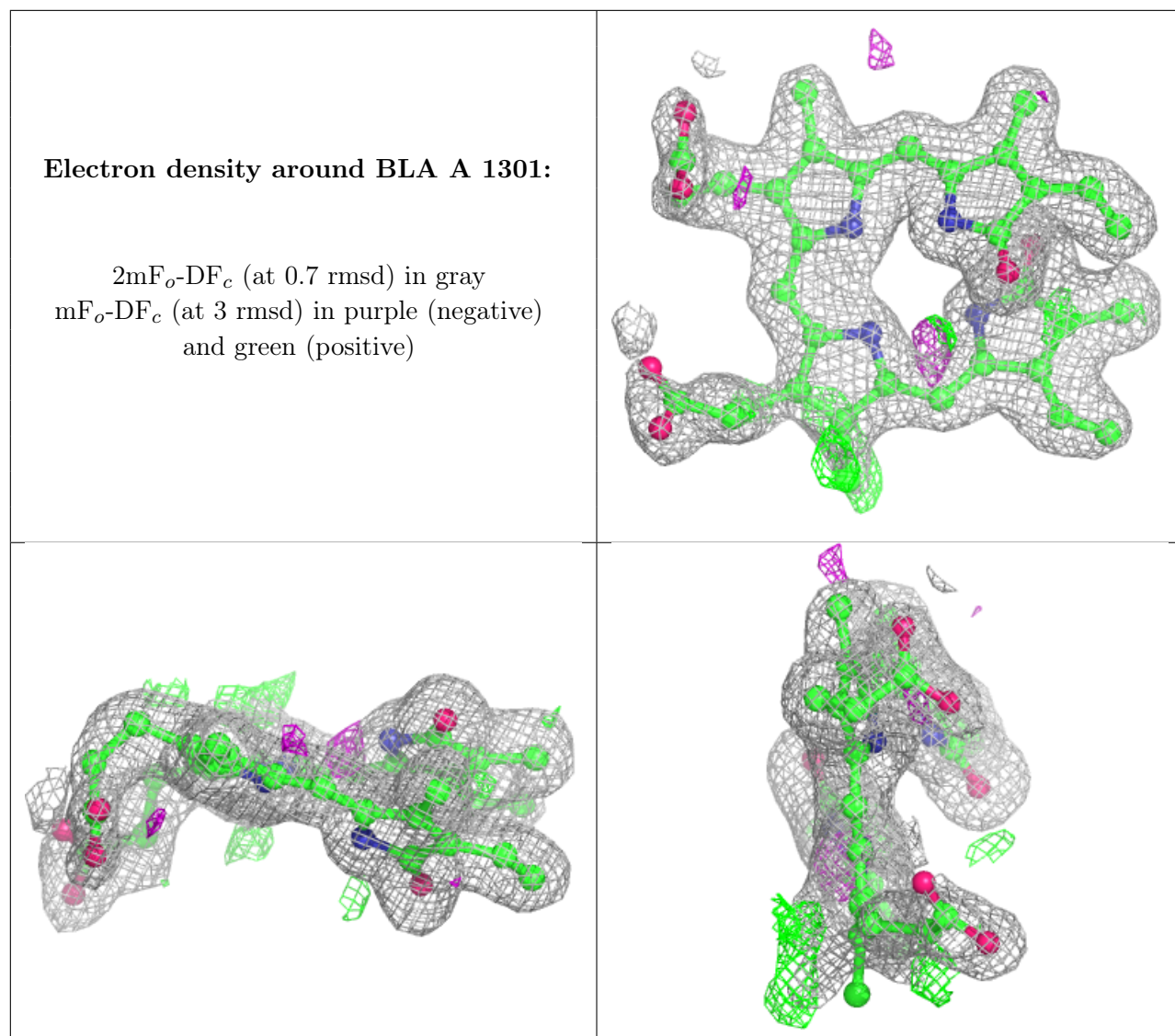
Mol	Type	Chain	Res	Atoms	RSCC	RSR	B-factors(Å <sup>2</sup> )	Q<0.9
3	NAG	A	1307	14/15	0.80	0.22	61,71,82,85	0

*Continued on next page...*

*Continued from previous page...*

Mol	Type	Chain	Res	Atoms	RSCC	RSR	B-factors( $\text{\AA}^2$ )	Q<0.9
3	NAG	A	1308	14/15	0.82	0.29	52,75,81,83	0
4	PG4	A	1310	13/13	0.82	0.18	49,55,71,73	0
6	PGE	A	1316	10/10	0.83	0.13	54,62,69,72	0
3	NAG	A	1306	14/15	0.84	0.20	42,55,67,76	0
6	PGE	A	1314	10/10	0.85	0.19	41,59,69,70	0
5	PEG	A	1313	7/7	0.85	0.33	37,42,48,62	0
4	PG4	A	1309	13/13	0.86	0.21	39,50,65,69	0
5	PEG	A	1312	7/7	0.88	0.22	34,54,63,71	0
5	PEG	A	1311	7/7	0.89	0.12	33,40,60,64	0
7	1PE	A	1317	16/16	0.89	0.18	29,46,66,77	0
3	NAG	A	1303	14/15	0.91	0.14	51,65,74,76	0
3	NAG	A	1305	14/15	0.92	0.24	46,55,67,71	0
2	BLA	A	1301	43/43	0.92	0.14	20,30,67,83	0
6	PGE	A	1315	10/10	0.94	0.15	43,54,67,81	0
3	NAG	A	1302	14/15	0.95	0.09	30,43,58,59	0
3	NAG	A	1304	14/15	0.98	0.08	20,24,30,31	0

The following is a graphical depiction of the model fit to experimental electron density of all instances of the Ligand of Interest. In addition, ligands with molecular weight > 250 and outliers as shown on the geometry validation Tables will also be included. Each fit is shown from different orientation to approximate a three-dimensional view.



## 6.5 Other polymers [i](#)

There are no such residues in this entry.