



Full wwPDB X-ray Structure Validation Report ⓘ

Jan 5, 2021 – 12:09 PM GMT

PDB ID : 7B6G
Title : Crystal structure of MurE from E.coli in complex with Z1675346324
Authors : Koekemoer, L.; Steindel, M.; Fairhead, M.; Talon, R.; Douangamath, A.; Arrowsmith, C.H.; Edwards, A.M.; Bountra, C.; von Delft, F.; Krojer, T.; Structural Genomics Consortium (SGC)
Deposited on : 2020-12-07
Resolution : 1.94 Å(reported)

This is a Full wwPDB X-ray Structure Validation Report for a publicly released PDB entry.

We welcome your comments at validation@mail.wwpdb.org

A user guide is available at

<https://www.wwpdb.org/validation/2017/XrayValidationReportHelp>

with specific help available everywhere you see the ⓘ symbol.

The following versions of software and data (see [references ⓘ](#)) were used in the production of this report:

MolProbity : 4.02b-467
Mogul : 1.8.5 (274361), CSD as541be (2020)
Xtriage (Phenix) : 1.13
EDS : 2.16
buster-report : 1.1.7 (2018)
Percentile statistics : 20191225.v01 (using entries in the PDB archive December 25th 2019)
Refmac : 5.8.0158
CCP4 : 7.0.044 (Gargrove)
Ideal geometry (proteins) : Engh & Huber (2001)
Ideal geometry (DNA, RNA) : Parkinson et al. (1996)
Validation Pipeline (wwPDB-VP) : 2.16

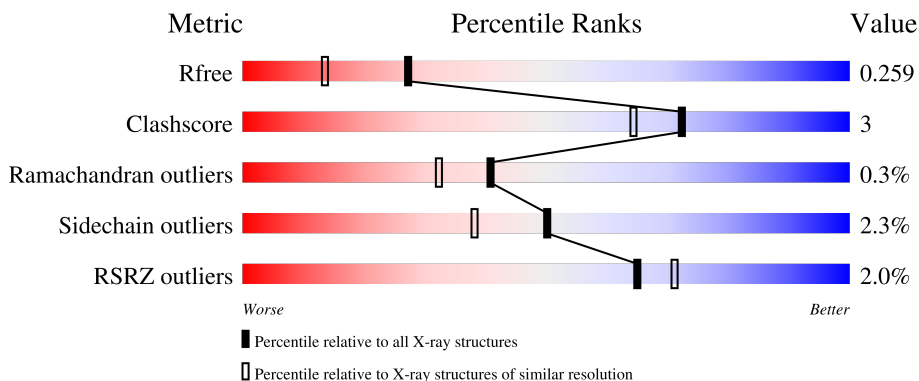
1 Overall quality at a glance

The following experimental techniques were used to determine the structure:

X-RAY DIFFRACTION

The reported resolution of this entry is 1.94 Å.

Percentile scores (ranging between 0-100) for global validation metrics of the entry are shown in the following graphic. The table shows the number of entries on which the scores are based.



Metric	Whole archive (#Entries)	Similar resolution (#Entries, resolution range(Å))
R_{free}	130704	4310 (1.96-1.92)
Clashscore	141614	1023 (1.94-1.94)
Ramachandran outliers	138981	1007 (1.94-1.94)
Sidechain outliers	138945	1007 (1.94-1.94)
RSRZ outliers	127900	4250 (1.96-1.92)

The table below summarises the geometric issues observed across the polymeric chains and their fit to the electron density. The red, orange, yellow and green segments of the lower bar indicate the fraction of residues that contain outliers for ≥ 3 , 2, 1 and 0 types of geometric quality criteria respectively. A grey segment represents the fraction of residues that are not modelled. The numeric value for each fraction is indicated below the corresponding segment, with a dot representing fractions $\leq 5\%$. The upper red bar (where present) indicates the fraction of residues that have poor fit to the electron density. The numeric value is given above the bar.

Mol	Chain	Length	Quality of chain
1	AAA	496	
1	BBB	496	

2 Entry composition [i](#)

There are 4 unique types of molecules in this entry. The entry contains 7649 atoms, of which 0 are hydrogens and 0 are deuteriums.

In the tables below, the ZeroOcc column contains the number of atoms modelled with zero occupancy, the AltConf column contains the number of residues with at least one atom in alternate conformation and the Trace column contains the number of residues modelled with at most 2 atoms.

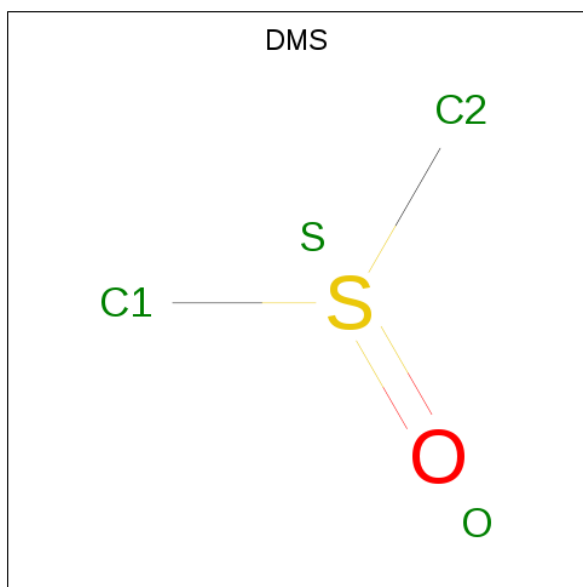
- Molecule 1 is a protein called UDP-N-acetylmuramoyl-L-alanyl-D-glutamate--2,6-diaminopimelate ligase.

Mol	Chain	Residues	Atoms					ZeroOcc	AltConf	Trace
			Total	C	N	O	S			
1	AAA	483	Total 3716	C 2324	N 674	O 698	S 20	0	7	0
1	BBB	477	Total 3644	C 2279	N 651	O 692	S 22	0	7	0

There are 2 discrepancies between the modelled and reference sequences:

Chain	Residue	Modelled	Actual	Comment	Reference
AAA	0	SER	-	expression tag	UNP A0A5Q2GBT0
BBB	0	SER	-	expression tag	UNP A0A5Q2GBT0

- Molecule 2 is DIMETHYL SULFOXIDE (three-letter code: DMS) (formula: C₂H₆OS).



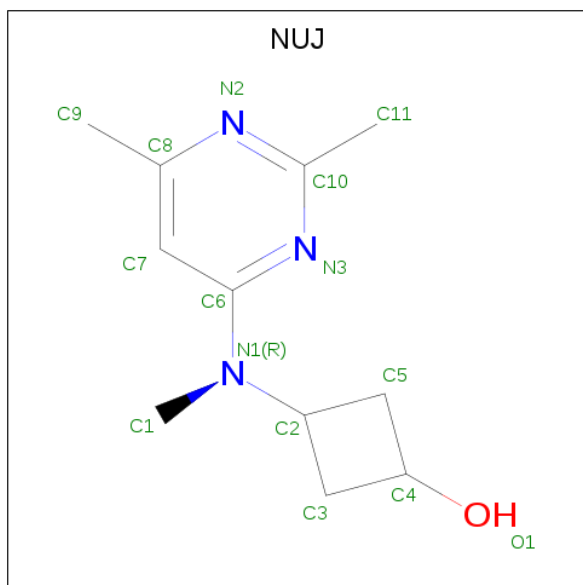
Mol	Chain	Residues	Atoms				ZeroOcc	AltConf
			Total	C	O	S		
2	AAA	1	Total 4	C 2	O 1	S 1	0	0

Continued on next page...

Continued from previous page...

Mol	Chain	Residues	Atoms				ZeroOcc	AltConf
			Total	C	O	S		
2	BBB	1	4	2	1	1	0	0

- Molecule 3 is trans-3-[(2,6-dimethylpyrimidin-4-yl)(methyl)amino]cyclobutan-1-ol (three-letter code: NUJ) (formula: C₁₁H₁₇N₃O) (labeled as "Ligand of Interest" by depositor).



Mol	Chain	Residues	Atoms				ZeroOcc	AltConf
			Total	C	N	O		
3	BBB	1	15	11	3	1	0	0

- Molecule 4 is water.

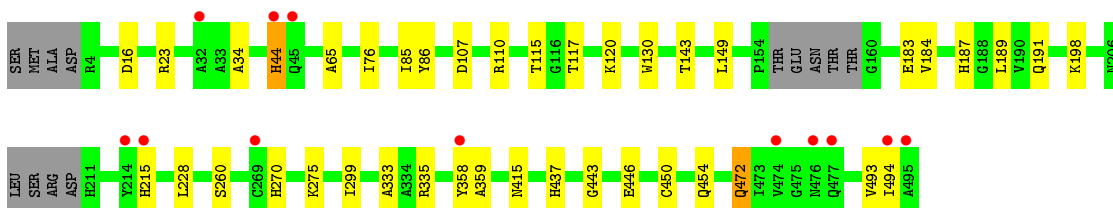
Mol	Chain	Residues	Atoms		ZeroOcc	AltConf
			Total	O		
4	AAA	129	129	129	0	0
4	BBB	137	137	137	0	0

3 Residue-property plots [i](#)


These plots are drawn for all protein, RNA, DNA and oligosaccharide chains in the entry. The first graphic for a chain summarises the proportions of the various outlier classes displayed in the second graphic. The second graphic shows the sequence view annotated by issues in geometry and electron density. Residues are color-coded according to the number of geometric quality criteria for which they contain at least one outlier: green = 0, yellow = 1, orange = 2 and red = 3 or more. A red dot above a residue indicates a poor fit to the electron density ($RSRZ > 2$). Stretches of 2 or more consecutive residues without any outlier are shown as a green connector. Residues present in the sample, but not in the model, are shown in grey.

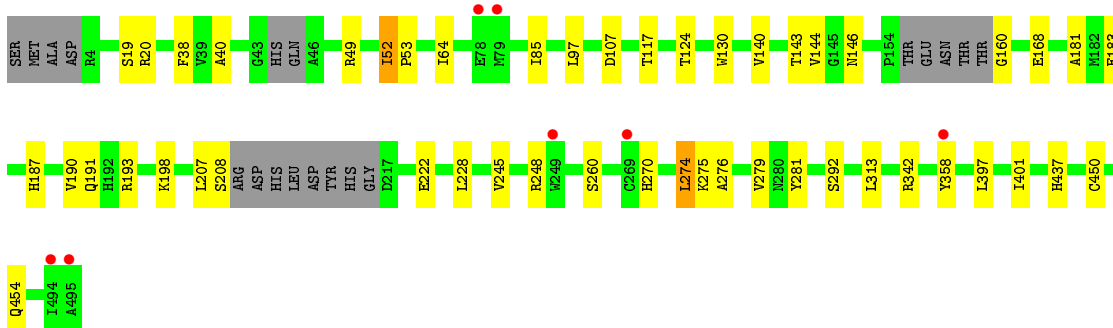
- Molecule 1: UDP-N-acetylmuramoyl-L-alanyl-D-glutamate--2,6-diaminopimelate ligase

Chain AAA: 



- Molecule 1: UDP-N-acetylmuramoyl-L-alanyl-D-glutamate--2,6-diaminopimelate ligase

Chain BBB: 



4 Data and refinement statistics

Property	Value	Source
Space group	P 1	Depositor
Cell constants a, b, c, α , β , γ	58.28Å 58.29Å 74.11Å 97.23° 91.45° 105.31°	Depositor
Resolution (Å)	73.39 – 1.94 73.39 – 1.94	Depositor EDS
% Data completeness (in resolution range)	95.6 (73.39-1.94) 95.6 (73.39-1.94)	Depositor EDS
R_{merge}	0.09	Depositor
R_{sym}	(Not available)	Depositor
$\langle I/\sigma(I) \rangle$ ¹	1.58 (at 1.94Å)	Xtrriage
Refinement program	REFMAC 5.8.0267	Depositor
R, R_{free}	0.205 , 0.256 0.211 , 0.259	Depositor DCC
R_{free} test set	3393 reflections (5.12%)	wwPDB-VP
Wilson B-factor (Å ²)	33.4	Xtrriage
Anisotropy	0.323	Xtrriage
Bulk solvent k_{sol} (e/Å ³), B_{sol} (Å ²)	0.34 , 35.4	EDS
L-test for twinning ²	$\langle L \rangle = 0.51$, $\langle L^2 \rangle = 0.34$	Xtrriage
Estimated twinning fraction	No twinning to report.	Xtrriage
F_o, F_c correlation	0.96	EDS
Total number of atoms	7649	wwPDB-VP
Average B, all atoms (Å ²)	42.0	wwPDB-VP

Xtrriage's analysis on translational NCS is as follows: *The largest off-origin peak in the Patterson function is 7.92% of the height of the origin peak. No significant pseudotranslation is detected.*

¹Intensities estimated from amplitudes.

²Theoretical values of $\langle |L| \rangle$, $\langle L^2 \rangle$ for acentric reflections are 0.5, 0.333 respectively for untwinned datasets, and 0.375, 0.2 for perfectly twinned datasets.

5 Model quality [i](#)

5.1 Standard geometry [i](#)

Bond lengths and bond angles in the following residue types are not validated in this section: DMS, NUJ

The Z score for a bond length (or angle) is the number of standard deviations the observed value is removed from the expected value. A bond length (or angle) with $|Z| > 5$ is considered an outlier worth inspection. RMSZ is the root-mean-square of all Z scores of the bond lengths (or angles).

Mol	Chain	Bond lengths		Bond angles	
		RMSZ	# Z >5	RMSZ	# Z >5
1	AAA	0.70	0/3784	0.82	0/5133
1	BBB	0.71	0/3710	0.82	0/5034
All	All	0.71	0/7494	0.82	0/10167

There are no bond length outliers.

There are no bond angle outliers.

There are no chirality outliers.

There are no planarity outliers.

5.2 Too-close contacts [i](#)

In the following table, the Non-H and H(model) columns list the number of non-hydrogen atoms and hydrogen atoms in the chain respectively. The H(added) column lists the number of hydrogen atoms added and optimized by MolProbity. The Clashes column lists the number of clashes within the asymmetric unit, whereas Symm-Clashes lists symmetry-related clashes.

Mol	Chain	Non-H	H(model)	H(added)	Clashes	Symm-Clashes
1	AAA	3716	0	3675	20	0
1	BBB	3644	0	3606	30	0
2	AAA	4	0	6	2	0
2	BBB	4	0	6	0	0
3	BBB	15	0	0	0	0
4	AAA	129	0	0	1	0
4	BBB	137	0	0	1	0
All	All	7649	0	7293	50	0

The all-atom clashscore is defined as the number of clashes found per 1000 atoms (including hydrogen atoms). The all-atom clashscore for this structure is 3.

All (50) close contacts within the same asymmetric unit are listed below, sorted by their clash magnitude.

Atom-1	Atom-2	Interatomic distance (Å)	Clash overlap (Å)
1:AAA:115:THR:HG22	1:AAA:184:VAL:HB	1.69	0.72
1:BBB:342:ARG:NH1	4:BBB:601:HOH:O	2.23	0.71
1:AAA:107:ASP:OD1	1:AAA:198:LYS:HD2	1.91	0.71
1:BBB:160:GLY:O	1:BBB:193:ARG:HD3	1.91	0.70
1:BBB:187:HIS:NE2	1:BBB:191:GLN:OE1	2.28	0.67
1:BBB:190:VAL:HA	1:BBB:228:LEU:HD11	1.77	0.65
1:AAA:450:CYS:SG	1:AAA:454:GLN:NE2	2.70	0.63
1:BBB:19:SER:O	1:BBB:20:ARG:HD3	1.99	0.63
1:BBB:260:SER:O	1:BBB:275:LYS:HA	1.99	0.62
1:AAA:143:THR:HG23	1:AAA:183:GLU:OE1	2.02	0.59
1:BBB:49:ARG:HA	1:BBB:52:ILE:HD13	1.87	0.57
1:BBB:52:ILE:N	1:BBB:53:PRO:HD2	2.20	0.56
1:BBB:274:LEU:HD12	1:BBB:292:SER:HB3	1.88	0.56
1:AAA:44:HIS:O	1:AAA:44:HIS:CG	2.59	0.56
1:AAA:184:VAL:HG11	2:AAA:501:DMS:C1	2.36	0.55
1:AAA:260:SER:O	1:AAA:275:LYS:HA	2.06	0.55
1:AAA:415:ASN:H	1:AAA:472:GLN:NE2	2.06	0.53
1:AAA:189:LEU:HG	1:AAA:228:LEU:HD13	1.90	0.52
1:BBB:49:ARG:HA	1:BBB:52:ILE:CD1	2.39	0.52
1:BBB:117:THR:HG21	1:BBB:208:SER:H	1.75	0.52
1:BBB:397:LEU:O	1:BBB:401:ILE:HG12	2.10	0.52
1:BBB:40:ALA:HB2	1:BBB:52:ILE:HD11	1.92	0.51
1:BBB:207:LEU:HD23	1:BBB:245:VAL:HG21	1.91	0.51
1:BBB:146:ASN:ND2	1:BBB:168:GLU:HG2	2.26	0.51
1:AAA:44:HIS:ND1	1:AAA:44:HIS:O	2.45	0.50
1:BBB:107:ASP:OD1	1:BBB:198:LYS:HD2	2.12	0.49
1:BBB:143:THR:HG23	1:BBB:183:GLU:OE1	2.13	0.48
1:AAA:120[A]:LYS:NZ	4:AAA:607:HOH:O	2.47	0.47
1:BBB:40:ALA:CB	1:BBB:52:ILE:HD11	2.45	0.47
1:BBB:38:PHE:HE2	1:BBB:52:ILE:HD12	1.79	0.47
1:BBB:140:VAL:HA	1:BBB:181:ALA:O	2.15	0.47
1:BBB:279:VAL:HG11	1:BBB:281:TYR:CZ	2.51	0.46
1:AAA:493:VAL:O	1:AAA:494:ILE:HD12	2.16	0.46
1:AAA:184:VAL:HG11	2:AAA:501:DMS:H12	1.97	0.46
1:BBB:222:GLU:OE2	1:BBB:248:ARG:NH1	2.46	0.46
1:BBB:146:ASN:HD22	1:BBB:168:GLU:HG2	1.80	0.45
1:BBB:64:ILE:HD13	1:BBB:97:LEU:HD21	1.97	0.45
1:AAA:493:VAL:C	1:AAA:494:ILE:HD12	2.38	0.44
1:BBB:64:ILE:HA	1:BBB:85:ILE:O	2.18	0.43
1:BBB:117:THR:HG23	1:BBB:207:LEU:HA	2.00	0.43

Continued on next page...

Continued from previous page...

Atom-1	Atom-2	Interatomic distance (Å)	Clash overlap (Å)
1:AAA:443:GLY:HA3	1:AAA:446:GLU:OE1	2.18	0.43
1:BBB:187:HIS:CD2	1:BBB:191:GLN:OE1	2.71	0.43
1:BBB:276:ALA:HB2	1:BBB:313:LEU:HD11	1.99	0.43
1:AAA:23:ARG:HD2	1:AAA:34:ALA:O	2.19	0.42
1:AAA:187:HIS:NE2	1:AAA:191:GLN:OE1	2.53	0.42
1:BBB:450:CYS:SG	1:BBB:454:GLN:NE2	2.93	0.41
1:BBB:144:VAL:HG12	1:BBB:144:VAL:O	2.20	0.41
1:AAA:299:ILE:HG23	1:AAA:333:ALA:HB1	2.02	0.41
1:AAA:65:ALA:O	1:AAA:86:TYR:HA	2.21	0.40
1:AAA:76:ILE:HG12	1:AAA:85:ILE:HD12	2.03	0.40

There are no symmetry-related clashes.

5.3 Torsion angles [i](#)

5.3.1 Protein backbone [i](#)

In the following table, the Percentiles column shows the percent Ramachandran outliers of the chain as a percentile score with respect to all X-ray entries followed by that with respect to entries of similar resolution.

The Analysed column shows the number of residues for which the backbone conformation was analysed, and the total number of residues.

Mol	Chain	Analysed	Favoured	Allowed	Outliers	Percentiles	
1	AAA	484/496 (98%)	471 (97%)	11 (2%)	2 (0%)	34	24
1	BBB	476/496 (96%)	462 (97%)	13 (3%)	1 (0%)	47	39
All	All	960/992 (97%)	933 (97%)	24 (2%)	3 (0%)	41	32

All (3) Ramachandran outliers are listed below:

Mol	Chain	Res	Type
1	BBB	270	HIS
1	AAA	270	HIS
1	AAA	359	ALA

5.3.2 Protein sidechains [i](#)

In the following table, the Percentiles column shows the percent sidechain outliers of the chain as a percentile score with respect to all X-ray entries followed by that with respect to entries of similar resolution.

The Analysed column shows the number of residues for which the sidechain conformation was analysed, and the total number of residues.

Mol	Chain	Analysed	Rotameric	Outliers	Percentiles	
1	AAA	382/387 (99%)	369 (97%)	13 (3%)	37	22
1	BBB	377/387 (97%)	370 (98%)	7 (2%)	57	45
All	All	759/774 (98%)	739 (97%)	20 (3%)	50	32

All (20) residues with a non-rotameric sidechain are listed below:

Mol	Chain	Res	Type
1	AAA	16	ASP
1	AAA	44	HIS
1	AAA	110[A]	ARG
1	AAA	110[B]	ARG
1	AAA	117	THR
1	AAA	130	TRP
1	AAA	149	LEU
1	AAA	215	HIS
1	AAA	335[A]	ARG
1	AAA	335[B]	ARG
1	AAA	358	TYR
1	AAA	437	HIS
1	AAA	472	GLN
1	BBB	52	ILE
1	BBB	124[A]	THR
1	BBB	124[B]	THR
1	BBB	130	TRP
1	BBB	274	LEU
1	BBB	358	TYR
1	BBB	437	HIS

Sometimes sidechains can be flipped to improve hydrogen bonding and reduce clashes. There are no such sidechains identified.

5.3.3 RNA [i](#)

There are no RNA molecules in this entry.

5.4 Non-standard residues in protein, DNA, RNA chains [i](#)

There are no non-standard protein/DNA/RNA residues in this entry.

5.5 Carbohydrates [i](#)

There are no monosaccharides in this entry.

5.6 Ligand geometry [i](#)

3 ligands are modelled in this entry.

There are no bond length outliers.

There are no bond angle outliers.

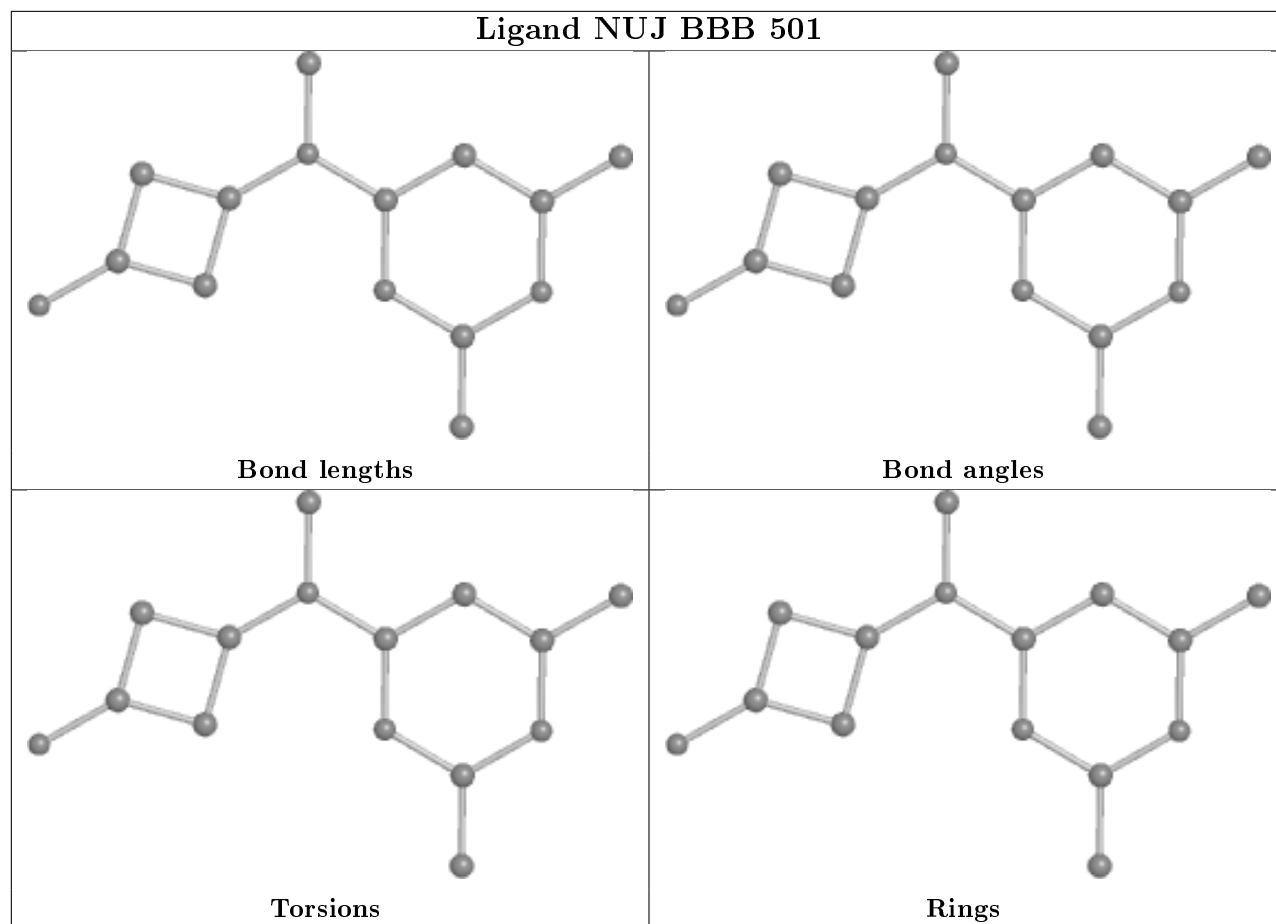
There are no chirality outliers.

There are no torsion outliers.

There are no ring outliers.

No monomer is involved in short contacts.

The following is a two-dimensional graphical depiction of Mogul quality analysis of bond lengths, bond angles, torsion angles, and ring geometry for all instances of the Ligand of Interest. In addition, ligands with molecular weight > 250 and outliers as shown on the validation Tables will also be included. For torsion angles, if less than 5% of the Mogul distribution of torsion angles is within 10 degrees of the torsion angle in question, then that torsion angle is considered an outlier. Any bond that is central to one or more torsion angles identified as an outlier by Mogul will be highlighted in the graph. For rings, the root-mean-square deviation (RMSD) between the ring in question and similar rings identified by Mogul is calculated over all ring torsion angles. If the average RMSD is greater than 60 degrees and the minimal RMSD between the ring in question and any Mogul-identified rings is also greater than 60 degrees, then that ring is considered an outlier. The outliers are highlighted in purple. The color gray indicates Mogul did not find sufficient equivalents in the CSD to analyse the geometry.



5.7 Other polymers [i](#)

There are no such residues in this entry.

5.8 Polymer linkage issues [i](#)

There are no chain breaks in this entry.

6 Fit of model and data [i](#)

6.1 Protein, DNA and RNA chains [i](#)

In the following table, the column labelled '#RSRZ > 2' contains the number (and percentage) of RSRZ outliers, followed by percent RSRZ outliers for the chain as percentile scores relative to all X-ray entries and entries of similar resolution. The OWAB column contains the minimum, median, 95th percentile and maximum values of the occupancy-weighted average B-factor per residue. The column labelled 'Q < 0.9' lists the number of (and percentage) of residues with an average occupancy less than 0.9.

Mol	Chain	Analysed	<RSRZ>	#RSRZ>2	OWAB(Å ²)	Q<0.9
1	AAA	483/496 (97%)	-0.10	12 (2%) 57 64	24, 39, 65, 102	0
1	BBB	477/496 (96%)	-0.12	7 (1%) 73 79	26, 38, 65, 88	0
All	All	960/992 (96%)	-0.11	19 (1%) 65 71	24, 39, 65, 102	0

All (19) RSRZ outliers are listed below:

Mol	Chain	Res	Type	RSRZ
1	AAA	494	ILE	5.3
1	BBB	269	CYS	4.1
1	BBB	494	ILE	4.1
1	AAA	495	ALA	3.7
1	AAA	215	HIS	3.7
1	AAA	214	TYR	3.1
1	BBB	78	GLU	3.1
1	BBB	79	MET	2.7
1	AAA	32	ALA	2.6
1	AAA	477	GLN	2.6
1	AAA	476	ASN	2.5
1	BBB	249	TRP	2.5
1	BBB	495	ALA	2.4
1	AAA	269	CYS	2.4
1	AAA	474	VAL	2.4
1	BBB	358	TYR	2.3
1	AAA	44	HIS	2.3
1	AAA	45	GLN	2.1
1	AAA	358	TYR	2.0

6.2 Non-standard residues in protein, DNA, RNA chains [i](#)

There are no non-standard protein/DNA/RNA residues in this entry.

6.3 Carbohydrates [i](#)

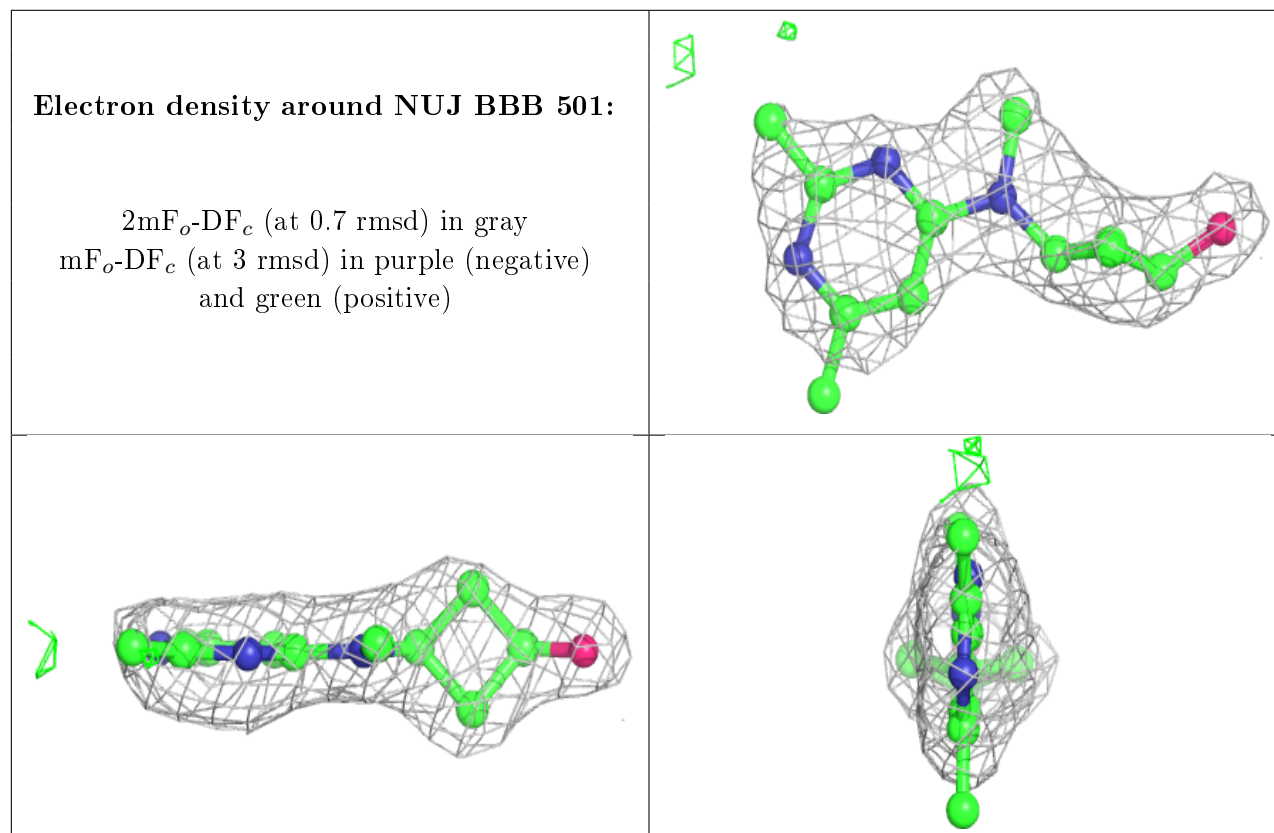
There are no monosaccharides in this entry.

6.4 Ligands [i](#)

In the following table, the Atoms column lists the number of modelled atoms in the group and the number defined in the chemical component dictionary. The B-factors column lists the minimum, median, 95th percentile and maximum values of B factors of atoms in the group. The column labelled 'Q< 0.9' lists the number of atoms with occupancy less than 0.9.

Mol	Type	Chain	Res	Atoms	RSCC	RSR	B-factors(Å ²)	Q<0.9
2	DMS	AAA	501	4/4	0.92	0.16	50,57,62,63	0
3	NUJ	BBB	501	15/15	0.93	0.12	41,53,69,69	0
2	DMS	BBB	502	4/4	0.97	0.12	59,64,65,66	0

The following is a graphical depiction of the model fit to experimental electron density of all instances of the Ligand of Interest. In addition, ligands with molecular weight > 250 and outliers as shown on the geometry validation Tables will also be included. Each fit is shown from different orientation to approximate a three-dimensional view.



6.5 Other polymers

There are no such residues in this entry.