



# Full wwPDB X-ray Structure Validation Report ⓘ

Sep 26, 2023 – 03:17 AM EDT

PDB ID : 6BAT  
Title : Crystal Structure of Wild-Type GltPh in complex with L-aspartate  
Authors : Font, J.; Scopelliti, A.J.; Vandenberg, R.J.; Boudker, O.; Ryan, R.M.  
Deposited on : 2017-10-15  
Resolution : 3.40 Å(reported)

This is a Full wwPDB X-ray Structure Validation Report for a publicly released PDB entry.

We welcome your comments at [validation@mail.wwpdb.org](mailto:validation@mail.wwpdb.org)

A user guide is available at

<https://www.wwpdb.org/validation/2017/XrayValidationReportHelp>

with specific help available everywhere you see the ⓘ symbol.

The types of validation reports are described at

<http://www.wwpdb.org/validation/2017/FAQs#types>.

---

The following versions of software and data (see [references ⓘ](#)) were used in the production of this report:

MolProbity : 4.02b-467  
Mogul : 1.8.5 (274361), CSD as541be (2020)  
Xtrriage (Phenix) : 1.13  
EDS : 2.35.1  
Percentile statistics : 20191225.v01 (using entries in the PDB archive December 25th 2019)  
Refmac : 5.8.0158  
CCP4 : 7.0.044 (Gargrove)  
Ideal geometry (proteins) : Engh & Huber (2001)  
Ideal geometry (DNA, RNA) : Parkinson et al. (1996)  
Validation Pipeline (wwPDB-VP) : 2.35.1

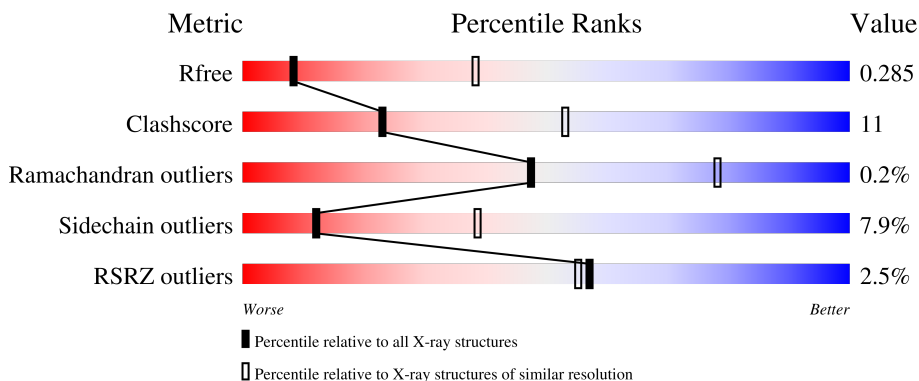
# 1 Overall quality at a glance

The following experimental techniques were used to determine the structure:

*X-RAY DIFFRACTION*


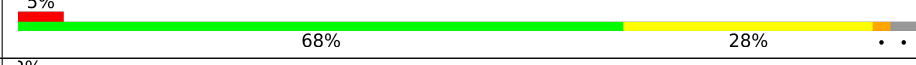
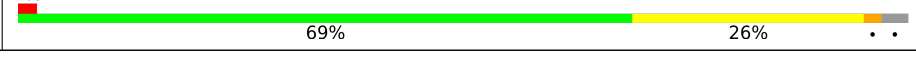
The reported resolution of this entry is 3.40 Å.

Percentile scores (ranging between 0-100) for global validation metrics of the entry are shown in the following graphic. The table shows the number of entries on which the scores are based.



Metric	Whole archive (#Entries)	Similar resolution (#Entries, resolution range(Å))
$R_{free}$	130704	1026 (3.48-3.32)
Clashscore	141614	1055 (3.48-3.32)
Ramachandran outliers	138981	1038 (3.48-3.32)
Sidechain outliers	138945	1038 (3.48-3.32)
RSRZ outliers	127900	2173 (3.50-3.30)

The table below summarises the geometric issues observed across the polymeric chains and their fit to the electron density. The red, orange, yellow and green segments of the lower bar indicate the fraction of residues that contain outliers for  $\geq 3$ , 2, 1 and 0 types of geometric quality criteria respectively. A grey segment represents the fraction of residues that are not modelled. The numeric value for each fraction is indicated below the corresponding segment, with a dot representing fractions  $\leq 5\%$ . The upper red bar (where present) indicates the fraction of residues that have poor fit to the electron density. The numeric value is given above the bar.

Mol	Chain	Length	Quality of chain
1	A	420	 72% 22% 5% 1% 0%
1	B	420	 68% 28% 3% 1% 0%
1	C	420	 69% 26% 3% 2% 0%

The following table lists non-polymeric compounds, carbohydrate monomers and non-standard residues in protein, DNA, RNA chains that are outliers for geometric or electron-density-fit criteria:

Mol	Type	Chain	Res	Chirality	Geometry	Clashes	Electron density
3	ASP	A	503	-	-	X	-

## 2 Entry composition [i](#)

There are 3 unique types of molecules in this entry. The entry contains 9051 atoms, of which 0 are hydrogens and 0 are deuteriums.

In the tables below, the ZeroOcc column contains the number of atoms modelled with zero occupancy, the AltConf column contains the number of residues with at least one atom in alternate conformation and the Trace column contains the number of residues modelled with at most 2 atoms.

- Molecule 1 is a protein called Glutamate transporter homolog.

Mol	Chain	Residues	Atoms					ZeroOcc	AltConf	Trace
			Total	C	N	O	S			
1	A	408	3006	1979	477	533	17	0	0	0
1	B	408	3006	1979	477	533	17	0	0	0
1	C	408	3006	1979	477	533	17	0	0	0

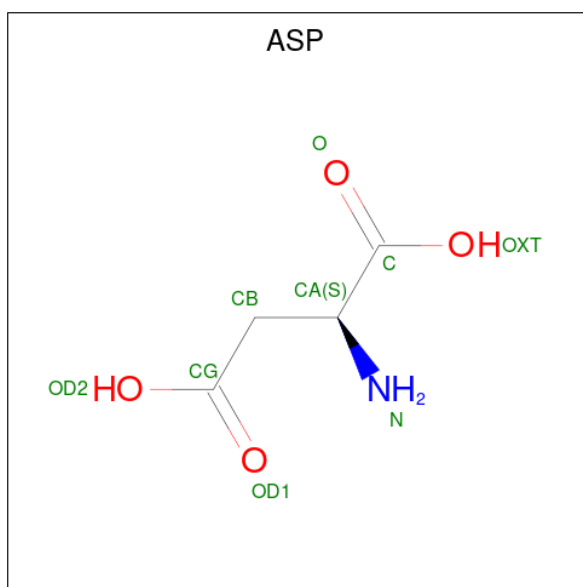
There are 9 discrepancies between the modelled and reference sequences:

Chain	Residue	Modelled	Actual	Comment	Reference
A	418	THR	-	expression tag	UNP O59010
A	419	LEU	-	expression tag	UNP O59010
A	420	VAL	-	expression tag	UNP O59010
B	418	THR	-	expression tag	UNP O59010
B	419	LEU	-	expression tag	UNP O59010
B	420	VAL	-	expression tag	UNP O59010
C	418	THR	-	expression tag	UNP O59010
C	419	LEU	-	expression tag	UNP O59010
C	420	VAL	-	expression tag	UNP O59010

- Molecule 2 is SODIUM ION (three-letter code: NA) (formula: Na).

Mol	Chain	Residues	Atoms		ZeroOcc	AltConf
2	A	2	Total 2	Na 2	0	0
2	B	2	Total 2	Na 2	0	0
2	C	2	Total 2	Na 2	0	0

- Molecule 3 is ASPARTIC ACID (three-letter code: ASP) (formula: C<sub>4</sub>H<sub>7</sub>NO<sub>4</sub>).

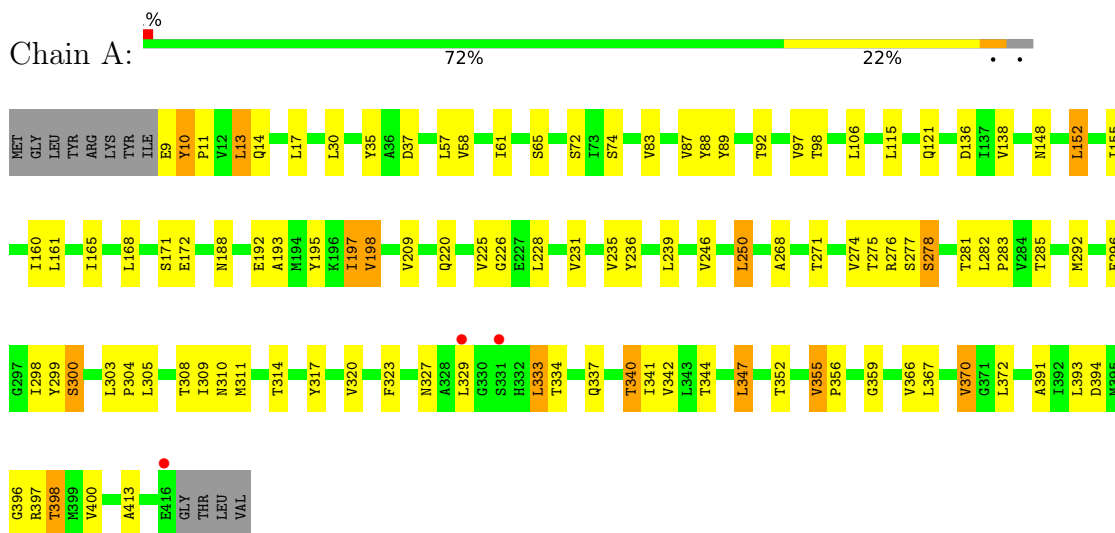


Mol	Chain	Residues	Atoms				ZeroOcc	AltConf
			Total	C	N	O		
3	A	1	9	4	1	4	0	0
3	B	1	9	4	1	4	0	0
3	C	1	9	4	1	4	0	0

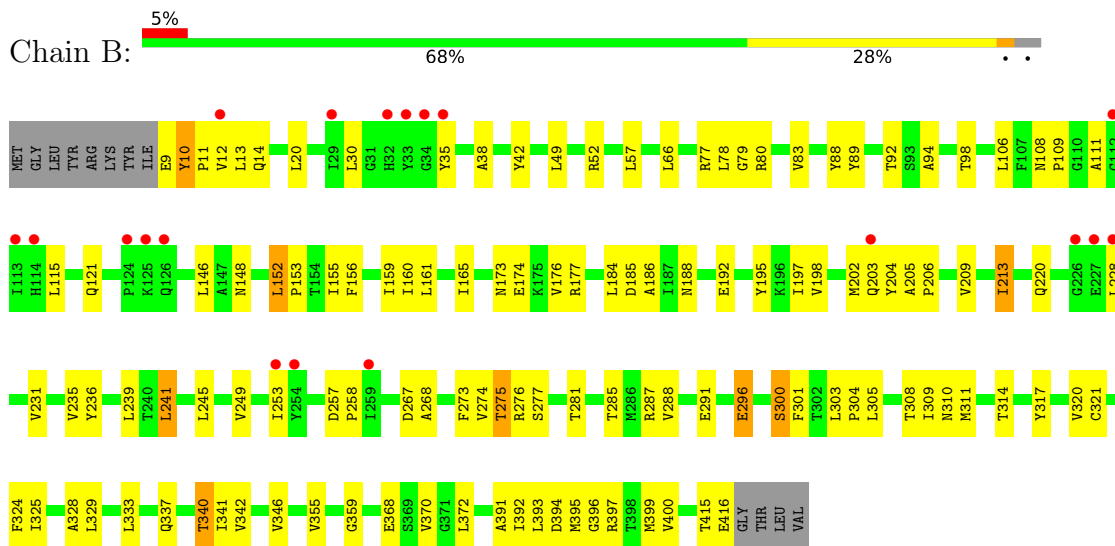
### 3 Residue-property plots [i](#)

These plots are drawn for all protein, RNA, DNA and oligosaccharide chains in the entry. The first graphic for a chain summarises the proportions of the various outlier classes displayed in the second graphic. The second graphic shows the sequence view annotated by issues in geometry and electron density. Residues are color-coded according to the number of geometric quality criteria for which they contain at least one outlier: green = 0, yellow = 1, orange = 2 and red = 3 or more. A red dot above a residue indicates a poor fit to the electron density ( $RSRZ > 2$ ). Stretches of 2 or more consecutive residues without any outlier are shown as a green connector. Residues present in the sample, but not in the model, are shown in grey.

- Molecule 1: Glutamate transporter homolog

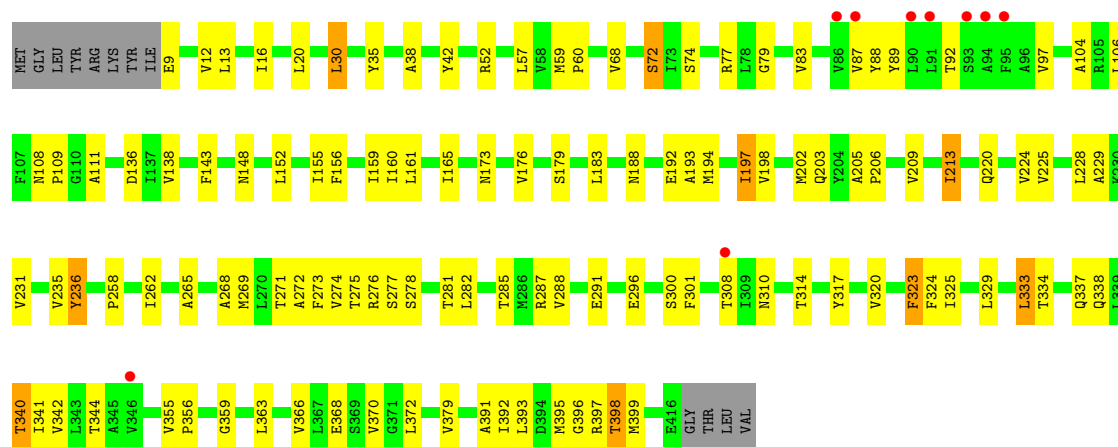


- Molecule 1: Glutamate transporter homolog



- Molecule 1: Glutamate transporter homolog





## 4 Data and refinement statistics i

Property	Value	Source
Space group	P 61	Depositor
Cell constants a, b, c, $\alpha$ , $\beta$ , $\gamma$	114.73Å 114.73Å 322.51Å 90.00° 90.00° 120.00°	Depositor
Resolution (Å)	40.00 – 3.40 39.36 – 3.40	Depositor EDS
% Data completeness (in resolution range)	97.1 (40.00-3.40) 97.1 (39.36-3.40)	Depositor EDS
$R_{merge}$	0.08	Depositor
$R_{sym}$	(Not available)	Depositor
$\langle I/\sigma(I) \rangle$ <sup>1</sup>	1.40 (at 3.40Å)	Xtrriage
Refinement program	REFMAC 5.5.0109	Depositor
R, $R_{free}$	0.247 , 0.286 0.249 , 0.285	Depositor DCC
$R_{free}$ test set	1566 reflections (4.90%)	wwPDB-VP
Wilson B-factor (Å <sup>2</sup> )	120.4	Xtrriage
Anisotropy	0.008	Xtrriage
Bulk solvent $k_{sol}$ (e/Å <sup>3</sup> ), $B_{sol}$ (Å <sup>2</sup> )	0.23 , 47.3	EDS
L-test for twinning <sup>2</sup>	$\langle  L  \rangle = 0.45$ , $\langle L^2 \rangle = 0.28$	Xtrriage
Estimated twinning fraction	0.077 for h,-h-k,-l	Xtrriage
$F_o, F_c$ correlation	0.90	EDS
Total number of atoms	9051	wwPDB-VP
Average B, all atoms (Å <sup>2</sup> )	140.0	wwPDB-VP

Xtrriage's analysis on translational NCS is as follows: *The largest off-origin peak in the Patterson function is 4.12% of the height of the origin peak. No significant pseudotranslation is detected.*

<sup>1</sup>Intensities estimated from amplitudes.

<sup>2</sup>Theoretical values of  $\langle |L| \rangle$ ,  $\langle L^2 \rangle$  for acentric reflections are 0.5, 0.333 respectively for untwinned datasets, and 0.375, 0.2 for perfectly twinned datasets.



## 5 Model quality [i](#)

### 5.1 Standard geometry [i](#)

Bond lengths and bond angles in the following residue types are not validated in this section:  
NA

The Z score for a bond length (or angle) is the number of standard deviations the observed value is removed from the expected value. A bond length (or angle) with  $|Z| > 5$  is considered an outlier worth inspection. RMSZ is the root-mean-square of all Z scores of the bond lengths (or angles).

Mol	Chain	Bond lengths		Bond angles	
		RMSZ	# Z  >5	RMSZ	# Z  >5
1	A	0.39	0/3058	0.55	0/4168
1	B	0.40	0/3058	0.52	0/4168
1	C	0.42	0/3058	0.53	0/4168
All	All	0.40	0/9174	0.54	0/12504

There are no bond length outliers.

There are no bond angle outliers.

There are no chirality outliers.

There are no planarity outliers.

### 5.2 Too-close contacts [i](#)

In the following table, the Non-H and H(model) columns list the number of non-hydrogen atoms and hydrogen atoms in the chain respectively. The H(added) column lists the number of hydrogen atoms added and optimized by MolProbity. The Clashes column lists the number of clashes within the asymmetric unit, whereas Symm-Clashes lists symmetry-related clashes.

Mol	Chain	Non-H	H(model)	H(added)	Clashes	Symm-Clashes
1	A	3006	0	3198	66	0
1	B	3006	0	3198	75	0
1	C	3006	0	3198	85	0
2	A	2	0	0	0	0
2	B	2	0	0	0	0
2	C	2	0	0	0	0
3	A	9	0	3	4	0
3	B	9	0	3	2	0
3	C	9	0	3	2	0
All	All	9051	0	9603	213	0

The all-atom clashscore is defined as the number of clashes found per 1000 atoms (including hydrogen atoms). The all-atom clashscore for this structure is 11.

All (213) close contacts within the same asymmetric unit are listed below, sorted by their clash magnitude.

Atom-1	Atom-2	Interatomic distance (Å)	Clash overlap (Å)
1:A:268:ALA:HB1	1:A:285:THR:HG22	1.43	1.00
1:B:296:GLU:O	1:B:300:SER:HB2	1.77	0.85
1:C:275:THR:HG23	1:C:277:SER:H	1.43	0.84
1:A:296:GLU:O	1:A:300:SER:HB2	1.79	0.83
1:A:275:THR:HG23	1:A:277:SER:H	1.44	0.82
1:C:57:LEU:HD13	1:C:198:VAL:HG12	1.62	0.81
1:A:235:VAL:HG22	1:A:320:VAL:HG11	1.65	0.79
1:C:398:THR:HG1	3:C:503:ASP:N	1.81	0.79
1:A:344:THR:HB	1:A:366:VAL:HG23	1.68	0.75
1:A:209:VAL:HA	1:A:274:VAL:HG11	1.69	0.74
1:A:299:TYR:HB2	1:A:303:LEU:HD12	1.71	0.73
1:C:194:MET:O	1:C:198:VAL:HG13	1.88	0.73
1:A:155:ILE:HD11	1:A:304:PRO:HB2	1.71	0.72
1:A:161:LEU:O	1:A:165:ILE:HG12	1.90	0.72
1:C:235:VAL:HG22	1:C:320:VAL:HG11	1.71	0.71
1:B:161:LEU:O	1:B:165:ILE:HG12	1.89	0.71
1:C:12:VAL:HG12	1:C:203:GLN:HE22	1.55	0.71
1:B:268:ALA:HB1	1:B:285:THR:HG22	1.73	0.70
1:B:305:LEU:HD21	1:B:309:ILE:HD12	1.75	0.69
1:A:160:ILE:HG22	1:C:197:ILE:HD12	1.73	0.69
1:A:393:LEU:O	1:A:397:ARG:HG3	1.97	0.65
1:C:209:VAL:HA	1:C:274:VAL:HG11	1.80	0.64
1:B:20:LEU:HA	1:B:213:ILE:CD1	2.28	0.64
1:A:209:VAL:HG13	1:A:274:VAL:HG21	1.79	0.64
1:C:89:TYR:CG	1:C:310:ASN:HB2	2.33	0.64
1:A:160:ILE:CG2	1:C:197:ILE:HD12	2.29	0.63
1:A:225:VAL:HG12	1:A:226:GLY:H	1.65	0.62
1:B:52:ARG:NH2	1:C:136:ASP:HA	2.14	0.62
1:B:188:ASN:O	1:B:192:GLU:HG2	2.00	0.62
1:C:193:ALA:O	1:C:197:ILE:HG12	1.99	0.61
1:C:268:ALA:HB1	1:C:285:THR:HG22	1.81	0.61
1:B:276:ARG:HD2	1:B:394:ASP:HB3	1.81	0.61
1:A:276:ARG:O	3:A:503:ASP:N	2.33	0.61
1:C:57:LEU:CD1	1:C:198:VAL:HG12	2.31	0.60
1:B:287:ARG:O	1:B:291:GLU:HG2	2.02	0.59
1:A:220:GLN:HE22	1:A:391:ALA:N	2.01	0.59
1:A:397:ARG:NE	3:A:503:ASP:OD1	2.35	0.59

*Continued on next page...*

*Continued from previous page...*

Atom-1	Atom-2	Interatomic distance (Å)	Clash overlap (Å)
1:B:20:LEU:HA	1:B:213:ILE:HD11	1.85	0.59
1:A:231:VAL:O	1:A:235:VAL:HG23	2.03	0.58
1:B:155:ILE:HD11	1:B:304:PRO:HB2	1.86	0.58
1:B:275:THR:HG23	1:B:277:SER:H	1.68	0.58
1:B:115:LEU:HD11	1:B:328:ALA:HB1	1.85	0.58
1:A:281:THR:HG22	1:A:285:THR:HG23	1.85	0.58
1:B:235:VAL:HG22	1:B:320:VAL:HG11	1.85	0.58
1:A:168:LEU:HD21	1:C:192:GLU:HB2	1.86	0.57
1:B:12:VAL:HG12	1:B:203:GLN:HE22	1.69	0.57
1:B:197:ILE:HD12	1:C:160:ILE:HG22	1.86	0.57
1:C:273:PHE:HB2	1:C:399:MET:HG3	1.86	0.57
1:B:173:ASN:HD22	1:B:176:VAL:HG23	1.70	0.57
1:A:314:THR:HA	1:A:397:ARG:HD2	1.87	0.57
1:A:333:LEU:HD22	1:A:341:ILE:HD11	1.85	0.56
1:C:276:ARG:HD3	1:C:395:MET:HG2	1.87	0.56
1:A:305:LEU:HD21	1:A:309:ILE:HD12	1.87	0.56
1:C:225:VAL:HA	1:C:229:ALA:HB2	1.87	0.55
1:A:220:GLN:HE22	1:A:391:ALA:H	1.53	0.55
1:B:359:GLY:N	3:B:503:ASP:OD2	2.39	0.55
1:B:209:VAL:HA	1:B:274:VAL:HG11	1.88	0.55
1:A:152:LEU:HD12	1:A:155:ILE:HD12	1.87	0.55
1:A:188:ASN:O	1:A:192:GLU:HG2	2.07	0.55
1:B:174:GLU:OE2	1:B:177:ARG:NH2	2.41	0.54
1:B:220:GLN:HE22	1:B:391:ALA:H	1.54	0.54
1:A:136:ASP:HA	1:C:52:ARG:NH2	2.21	0.54
1:C:275:THR:HG23	1:C:277:SER:N	2.17	0.54
1:B:393:LEU:O	1:B:397:ARG:HG3	2.07	0.54
1:C:173:ASN:HB3	1:C:176:VAL:HB	1.89	0.54
1:A:11:PRO:HG2	1:A:14:GLN:HG3	1.90	0.54
1:B:276:ARG:HD3	1:B:395:MET:HG2	1.89	0.54
1:B:311:MET:HB3	1:B:314:THR:HB	1.89	0.54
1:B:66:LEU:HD13	1:B:300:SER:HB3	1.91	0.53
1:C:88:TYR:CZ	1:C:92:THR:HG21	2.44	0.53
1:C:359:GLY:N	3:C:503:ASP:OD2	2.40	0.53
1:A:97:VAL:HG11	1:A:342:VAL:HA	1.90	0.53
1:B:288:VAL:HA	1:B:291:GLU:HG3	1.91	0.53
1:A:268:ALA:CB	1:A:285:THR:HG22	2.30	0.52
1:B:88:TYR:CZ	1:B:92:THR:HG21	2.45	0.52
1:C:314:THR:HA	1:C:397:ARG:HD2	1.90	0.52
1:A:235:VAL:HG22	1:A:320:VAL:CG1	2.38	0.52
1:C:60:PRO:HB2	1:C:194:MET:HG3	1.91	0.52

*Continued on next page...*

*Continued from previous page...*

Atom-1	Atom-2	Interatomic distance (Å)	Clash overlap (Å)
1:C:104:ALA:HB1	1:C:323:PHE:CB	2.40	0.52
1:C:108:ASN:HB3	1:C:111:ALA:HB2	1.91	0.52
1:A:88:TYR:CZ	1:A:92:THR:HG21	2.45	0.52
1:A:89:TYR:CG	1:A:310:ASN:HB2	2.45	0.51
1:A:239:LEU:HB3	1:A:400:VAL:HG21	1.91	0.51
1:C:220:GLN:HE22	1:C:391:ALA:H	1.58	0.51
1:C:38:ALA:O	1:C:42:TYR:HB2	2.11	0.51
1:C:296:GLU:O	1:C:300:SER:HB2	2.10	0.51
1:B:77:ARG:HD3	1:B:80:ARG:HH12	1.76	0.51
1:C:258:PRO:O	1:C:262:ILE:HG12	2.11	0.50
1:C:344:THR:HB	1:C:366:VAL:HG23	1.94	0.50
1:B:38:ALA:O	1:B:42:TYR:HB2	2.12	0.50
1:A:197:ILE:CD1	1:B:160:ILE:HG22	2.42	0.49
1:B:276:ARG:O	3:B:503:ASP:N	2.45	0.49
1:C:296:GLU:O	1:C:300:SER:CB	2.59	0.49
1:C:333:LEU:HD22	1:C:341:ILE:HD11	1.93	0.49
1:A:236:TYR:HE1	1:A:396:GLY:HA3	1.77	0.49
1:C:20:LEU:HA	1:C:213:ILE:HD11	1.95	0.49
1:C:20:LEU:HA	1:C:213:ILE:CD1	2.43	0.49
1:C:276:ARG:CD	1:C:395:MET:HG2	2.43	0.49
1:C:109:PRO:HB2	1:C:324:PHE:HD1	1.77	0.49
1:A:30:LEU:O	1:A:35:TYR:HB2	2.13	0.48
1:A:276:ARG:HD2	1:A:394:ASP:HB3	1.96	0.48
1:B:236:TYR:HE1	1:B:396:GLY:HA3	1.79	0.48
1:C:188:ASN:O	1:C:192:GLU:HG2	2.13	0.48
1:A:282:LEU:HD21	1:A:304:PRO:HA	1.96	0.48
1:A:317:TYR:CG	1:A:397:ARG:HD3	2.49	0.48
1:A:271:THR:O	1:A:275:THR:HG22	2.14	0.48
1:C:269:MET:O	1:C:399:MET:HG3	2.13	0.48
1:B:273:PHE:HB2	1:B:399:MET:HG3	1.95	0.48
1:C:338:GLN:HA	1:C:341:ILE:HD12	1.96	0.48
1:C:59:MET:HB2	1:C:60:PRO:HD3	1.96	0.47
1:C:317:TYR:CG	1:C:397:ARG:HD3	2.49	0.47
1:A:305:LEU:CD2	1:A:309:ILE:HD12	2.44	0.47
1:B:109:PRO:HB2	1:B:324:PHE:HD1	1.80	0.47
1:C:271:THR:HB	1:C:281:THR:HG23	1.96	0.47
1:C:97:VAL:HG11	1:C:342:VAL:HA	1.97	0.47
1:C:89:TYR:CD1	1:C:310:ASN:HB2	2.49	0.47
1:C:198:VAL:O	1:C:202:MET:HG2	2.14	0.47
1:B:275:THR:HG23	1:B:277:SER:N	2.30	0.47
1:C:159:ILE:HD11	1:C:301:PHE:CD2	2.50	0.46

*Continued on next page...*

*Continued from previous page...*

Atom-1	Atom-2	Interatomic distance (Å)	Clash overlap (Å)
1:C:209:VAL:HG13	1:C:274:VAL:HG21	1.97	0.46
1:A:57:LEU:HD13	1:A:198:VAL:HG12	1.96	0.46
1:C:272:ALA:HB2	1:C:281:THR:HG21	1.97	0.46
1:B:89:TYR:CG	1:B:310:ASN:HB2	2.51	0.46
1:B:415:THR:O	1:B:416:GLU:HB2	2.16	0.46
1:B:89:TYR:CD1	1:B:310:ASN:HB2	2.51	0.45
1:A:61:ILE:O	1:A:65:SER:HB2	2.15	0.45
1:B:146:LEU:HB3	1:C:143:PHE:CD2	2.52	0.45
1:B:249:VAL:O	1:B:253:ILE:HG13	2.16	0.45
1:C:156:PHE:O	1:C:160:ILE:HG12	2.15	0.45
1:A:347:LEU:HD13	1:A:347:LEU:HA	1.85	0.45
1:C:213:ILE:H	1:C:213:ILE:HG13	1.54	0.45
1:A:311:MET:HB3	1:A:314:THR:HB	1.99	0.45
1:C:68:VAL:O	1:C:72:SER:HB3	2.16	0.45
1:C:355:VAL:HG13	1:C:356:PRO:HD2	1.97	0.45
1:B:198:VAL:O	1:B:202:MET:HG2	2.16	0.45
1:B:241:LEU:O	1:B:245:LEU:HB3	2.17	0.44
1:C:236:TYR:HE1	1:C:396:GLY:HA3	1.82	0.44
1:C:317:TYR:HE1	1:C:393:LEU:HD13	1.82	0.44
1:C:363:LEU:O	1:C:366:VAL:HG12	2.17	0.44
1:C:281:THR:HG22	1:C:285:THR:HG23	1.99	0.44
1:B:57:LEU:HD13	1:B:198:VAL:HG12	1.98	0.44
1:B:239:LEU:HB3	1:B:400:VAL:HG21	2.00	0.44
1:A:355:VAL:HG13	1:A:356:PRO:HD2	1.99	0.44
1:B:342:VAL:O	1:B:346:VAL:HG23	2.18	0.44
1:A:58:VAL:HG22	1:A:283:PRO:HD3	1.99	0.44
1:A:337:GLN:O	1:A:340:THR:HG22	2.17	0.44
1:C:272:ALA:HA	1:C:275:THR:HG22	1.99	0.44
1:B:228:LEU:HA	1:B:231:VAL:HG12	2.00	0.44
1:B:152:LEU:HD12	1:B:155:ILE:HD12	1.99	0.44
1:C:74:SER:HB2	1:C:77:ARG:HB2	1.99	0.44
1:A:11:PRO:CG	1:A:14:GLN:HG3	2.48	0.44
1:B:30:LEU:O	1:B:35:TYR:HB2	2.18	0.44
1:B:281:THR:HG22	1:B:285:THR:HG23	2.00	0.44
1:B:209:VAL:HG13	1:B:274:VAL:HG21	2.00	0.44
1:A:197:ILE:HD13	1:B:160:ILE:HG22	2.00	0.43
1:B:185:ASP:O	1:C:179:SER:HB2	2.18	0.43
1:B:165:ILE:HG21	1:B:184:LEU:HB2	2.00	0.43
1:C:16:ILE:HG23	1:C:209:VAL:HG21	2.00	0.43
1:C:228:LEU:HA	1:C:231:VAL:HG12	1.99	0.43
1:B:321:CYS:O	1:B:325:ILE:HG12	2.18	0.43

*Continued on next page...*

*Continued from previous page...*

Atom-1	Atom-2	Interatomic distance (Å)	Clash overlap (Å)
1:A:193:ALA:O	1:A:197:ILE:HG12	2.18	0.43
1:A:278:SER:HB2	3:A:503:ASP:OXT	2.18	0.43
1:B:257:ASP:HA	1:B:258:PRO:HD3	1.87	0.43
1:C:198:VAL:HG23	1:C:287:ARG:HD3	2.00	0.43
1:B:11:PRO:HG2	1:B:14:GLN:HG3	2.01	0.43
1:B:213:ILE:H	1:B:213:ILE:HG13	1.52	0.43
1:C:152:LEU:HD12	1:C:155:ILE:HD12	2.00	0.43
1:C:30:LEU:O	1:C:35:TYR:HB2	2.19	0.43
1:A:138:VAL:O	1:C:52:ARG:NH2	2.37	0.43
1:B:108:ASN:HB3	1:B:111:ALA:HB2	2.00	0.43
1:B:49:LEU:HD23	1:B:204:TYR:CZ	2.54	0.43
1:A:83:VAL:O	1:A:87:VAL:HG23	2.19	0.43
1:C:265:ALA:HA	1:C:288:VAL:HG11	2.01	0.43
1:A:352:THR:HG21	1:A:359:GLY:HA2	2.00	0.42
1:B:108:ASN:HA	1:B:109:PRO:HD3	1.84	0.42
1:B:152:LEU:HB2	1:B:153:PRO:HD3	2.01	0.42
1:B:276:ARG:HG2	1:B:395:MET:HA	2.01	0.42
1:B:303:LEU:HB2	1:B:304:PRO:HD3	2.01	0.42
1:C:79:GLY:O	1:C:83:VAL:HG23	2.20	0.42
1:A:298:ILE:HD13	1:A:413:ALA:HA	2.02	0.42
1:B:52:ARG:NH2	1:C:138:VAL:O	2.52	0.42
1:C:205:ALA:N	1:C:206:PRO:HD2	2.34	0.42
1:B:235:VAL:HG21	1:B:393:LEU:HD22	2.02	0.42
1:C:337:GLN:O	1:C:340:THR:HG22	2.20	0.42
1:B:159:ILE:HD11	1:B:301:PHE:CD2	2.55	0.42
1:B:156:PHE:O	1:B:160:ILE:HG12	2.19	0.42
1:B:195:TYR:O	1:B:198:VAL:HG22	2.20	0.42
1:B:333:LEU:HD22	1:B:341:ILE:HD11	2.02	0.42
1:A:367:LEU:O	1:A:370:VAL:HG23	2.19	0.41
1:B:79:GLY:O	1:B:83:VAL:HG23	2.20	0.41
1:A:228:LEU:O	1:A:231:VAL:HG12	2.20	0.41
1:C:276:ARG:HG2	1:C:395:MET:HA	2.02	0.41
1:A:13:LEU:O	1:A:17:LEU:HD23	2.21	0.41
1:B:94:ALA:HA	1:B:346:VAL:HG21	2.02	0.41
1:B:205:ALA:N	1:B:206:PRO:HD2	2.36	0.41
1:C:391:ALA:O	1:C:395:MET:HG3	2.20	0.41
1:A:246:VAL:O	1:A:250:LEU:HB2	2.20	0.41
1:C:159:ILE:HD11	1:C:301:PHE:HD2	1.86	0.41
1:B:186:ALA:O	1:C:183:LEU:HD13	2.20	0.41
1:A:236:TYR:HD1	1:A:239:LEU:HD12	1.86	0.41
1:A:398:THR:HG23	3:A:503:ASP:C	2.41	0.41

*Continued on next page...*

Continued from previous page...

Atom-1	Atom-2	Interatomic distance (Å)	Clash overlap (Å)
1:B:317:TYR:HE1	1:B:393:LEU:HD13	1.86	0.41
1:C:325:ILE:HG21	1:C:379:VAL:HG13	2.03	0.41
1:A:394:ASP:OD1	1:A:397:ARG:NH2	2.53	0.41
1:C:83:VAL:O	1:C:87:VAL:HG23	2.21	0.41
1:C:104:ALA:HB1	1:C:323:PHE:HB3	2.02	0.41
1:C:277:SER:HB2	1:C:356:PRO:HD3	2.01	0.41
1:A:327:ASN:HD22	1:A:327:ASN:HA	1.65	0.40
1:B:337:GLN:O	1:B:340:THR:HG22	2.21	0.40
1:C:282:LEU:HD12	1:C:282:LEU:HA	1.95	0.40
1:C:287:ARG:O	1:C:291:GLU:HG2	2.21	0.40
1:A:61:ILE:HD11	1:A:195:TYR:CE1	2.56	0.40
1:C:161:LEU:O	1:C:165:ILE:HG12	2.20	0.40

There are no symmetry-related clashes.

## 5.3 Torsion angles [i](#)

### 5.3.1 Protein backbone [i](#)

In the following table, the Percentiles column shows the percent Ramachandran outliers of the chain as a percentile score with respect to all X-ray entries followed by that with respect to entries of similar resolution.

The Analysed column shows the number of residues for which the backbone conformation was analysed, and the total number of residues.

Mol	Chain	Analysed	Favoured	Allowed	Outliers	Percentiles
1	A	406/420 (97%)	385 (95%)	20 (5%)	1 (0%)	47 78
1	B	406/420 (97%)	386 (95%)	19 (5%)	1 (0%)	47 78
1	C	406/420 (97%)	385 (95%)	20 (5%)	1 (0%)	47 78
All	All	1218/1260 (97%)	1156 (95%)	59 (5%)	3 (0%)	47 78

All (3) Ramachandran outliers are listed below:

Mol	Chain	Res	Type
1	B	10	TYR
1	C	224	VAL
1	A	10	TYR

### 5.3.2 Protein sidechains

In the following table, the Percentiles column shows the percent sidechain outliers of the chain as a percentile score with respect to all X-ray entries followed by that with respect to entries of similar resolution.

The Analysed column shows the number of residues for which the sidechain conformation was analysed, and the total number of residues.

Mol	Chain	Analysed	Rotameric	Outliers	Percentiles	
1	A	316/328 (96%)	285 (90%)	31 (10%)	8	28
1	B	316/328 (96%)	293 (93%)	23 (7%)	14	43
1	C	316/328 (96%)	295 (93%)	21 (7%)	16	46
All	All	948/984 (96%)	873 (92%)	75 (8%)	12	39

All (75) residues with a non-rotameric sidechain are listed below:

Mol	Chain	Res	Type
1	A	9	GLU
1	A	10	TYR
1	A	13	LEU
1	A	37	ASP
1	A	72	SER
1	A	74	SER
1	A	98	THR
1	A	106	LEU
1	A	115	LEU
1	A	121	GLN
1	A	148	ASN
1	A	152	LEU
1	A	171	SER
1	A	172	GLU
1	A	197	ILE
1	A	198	VAL
1	A	250	LEU
1	A	278	SER
1	A	292	MET
1	A	300	SER
1	A	308	THR
1	A	323	PHE
1	A	329	LEU
1	A	333	LEU
1	A	334	THR
1	A	340	THR

*Continued on next page...*



*Continued from previous page...*

<b>Mol</b>	<b>Chain</b>	<b>Res</b>	<b>Type</b>
1	A	347	LEU
1	A	355	VAL
1	A	370	VAL
1	A	372	LEU
1	A	398	THR
1	B	9	GLU
1	B	10	TYR
1	B	13	LEU
1	B	78	LEU
1	B	98	THR
1	B	106	LEU
1	B	121	GLN
1	B	148	ASN
1	B	152	LEU
1	B	213	ILE
1	B	241	LEU
1	B	267	ASP
1	B	275	THR
1	B	296	GLU
1	B	300	SER
1	B	308	THR
1	B	329	LEU
1	B	340	THR
1	B	355	VAL
1	B	368	GLU
1	B	370	VAL
1	B	372	LEU
1	B	392	ILE
1	C	9	GLU
1	C	13	LEU
1	C	30	LEU
1	C	72	SER
1	C	106	LEU
1	C	148	ASN
1	C	197	ILE
1	C	213	ILE
1	C	236	TYR
1	C	278	SER
1	C	308	THR
1	C	323	PHE
1	C	329	LEU
1	C	333	LEU

*Continued on next page...*

*Continued from previous page...*

Mol	Chain	Res	Type
1	C	334	THR
1	C	340	THR
1	C	368	GLU
1	C	370	VAL
1	C	372	LEU
1	C	392	ILE
1	C	398	THR

Sometimes sidechains can be flipped to improve hydrogen bonding and reduce clashes. All (9) such sidechains are listed below:

Mol	Chain	Res	Type
1	A	220	GLN
1	A	327	ASN
1	A	338	GLN
1	B	203	GLN
1	B	220	GLN
1	B	327	ASN
1	C	203	GLN
1	C	220	GLN
1	C	327	ASN

### 5.3.3 RNA [i](#)

There are no RNA molecules in this entry.

### 5.4 Non-standard residues in protein, DNA, RNA chains [i](#)

There are no non-standard protein/DNA/RNA residues in this entry.

### 5.5 Carbohydrates [i](#)

There are no monosaccharides in this entry.

### 5.6 Ligand geometry [i](#)

Of 9 ligands modelled in this entry, 6 are monoatomic - leaving 3 for Mogul analysis.

In the following table, the Counts columns list the number of bonds (or angles) for which Mogul statistics could be retrieved, the number of bonds (or angles) that are observed in the model and

the number of bonds (or angles) that are defined in the Chemical Component Dictionary. The Link column lists molecule types, if any, to which the group is linked. The Z score for a bond length (or angle) is the number of standard deviations the observed value is removed from the expected value. A bond length (or angle) with  $|Z| > 2$  is considered an outlier worth inspection. RMSZ is the root-mean-square of all Z scores of the bond lengths (or angles).

Mol	Type	Chain	Res	Link	Bond lengths			Bond angles		
					Counts	RMSZ	# Z  > 2	Counts	RMSZ	# Z  > 2
3	ASP	A	503	-	6,8,8	1.23	1 (16%)	8,10,10	1.43	2 (25%)
3	ASP	B	503	-	6,8,8	1.24	1 (16%)	8,10,10	1.26	2 (25%)
3	ASP	C	503	-	6,8,8	1.18	1 (16%)	8,10,10	1.34	2 (25%)

In the following table, the Chirals column lists the number of chiral outliers, the number of chiral centers analysed, the number of these observed in the model and the number defined in the Chemical Component Dictionary. Similar counts are reported in the Torsion and Rings columns. '-' means no outliers of that kind were identified.

Mol	Type	Chain	Res	Link	Chirals	Torsions	Rings
3	ASP	A	503	-	-	2/8/8/8	-
3	ASP	B	503	-	-	4/8/8/8	-
3	ASP	C	503	-	-	4/8/8/8	-

All (3) bond length outliers are listed below:

Mol	Chain	Res	Type	Atoms	Z	Observed(Å)	Ideal(Å)
3	A	503	ASP	OXT-C	-2.21	1.23	1.30
3	B	503	ASP	OXT-C	-2.18	1.23	1.30
3	C	503	ASP	OXT-C	-2.06	1.23	1.30

All (6) bond angle outliers are listed below:

Mol	Chain	Res	Type	Atoms	Z	Observed(°)	Ideal(°)
3	A	503	ASP	OXT-C-O	-2.86	117.60	124.09
3	C	503	ASP	OXT-C-O	-2.58	118.23	124.09
3	B	503	ASP	OXT-C-O	-2.35	118.75	124.09
3	C	503	ASP	OXT-C-CA	2.32	121.30	113.38
3	A	503	ASP	OXT-C-CA	2.28	121.16	113.38
3	B	503	ASP	OXT-C-CA	2.09	120.49	113.38

There are no chirality outliers.

All (10) torsion outliers are listed below:

Mol	Chain	Res	Type	Atoms
3	A	503	ASP	C-CA-CB-CG
3	B	503	ASP	N-CA-CB-CG
3	B	503	ASP	C-CA-CB-CG
3	C	503	ASP	C-CA-CB-CG
3	C	503	ASP	OXT-C-CA-N
3	A	503	ASP	N-CA-CB-CG
3	C	503	ASP	N-CA-CB-CG
3	C	503	ASP	O-C-CA-N
3	B	503	ASP	O-C-CA-N
3	B	503	ASP	OXT-C-CA-N

There are no ring outliers.

3 monomers are involved in 8 short contacts:

Mol	Chain	Res	Type	Clashes	Symm-Clashes
3	A	503	ASP	4	0
3	B	503	ASP	2	0
3	C	503	ASP	2	0

## 5.7 Other polymers [i](#)

There are no such residues in this entry.

## 5.8 Polymer linkage issues [i](#)

There are no chain breaks in this entry.

## 6 Fit of model and data [i](#)

### 6.1 Protein, DNA and RNA chains [i](#)

In the following table, the column labelled ‘#RSRZ > 2’ contains the number (and percentage) of RSRZ outliers, followed by percent RSRZ outliers for the chain as percentile scores relative to all X-ray entries and entries of similar resolution. The OWAB column contains the minimum, median, 95<sup>th</sup> percentile and maximum values of the occupancy-weighted average B-factor per residue. The column labelled ‘Q < 0.9’ lists the number of (and percentage) of residues with an average occupancy less than 0.9.

Mol	Chain	Analysed	<RSRZ>	#RSRZ>2	OWAB(Å <sup>2</sup> )	Q<0.9
1	A	408/420 (97%)	-0.31	3 (0%) 87 87	86, 125, 174, 190	0
1	B	408/420 (97%)	-0.23	19 (4%) 31 31	92, 142, 206, 228	0
1	C	408/420 (97%)	-0.42	9 (2%) 62 60	94, 142, 199, 223	0
All	All	1224/1260 (97%)	-0.32	31 (2%) 57 55	86, 137, 196, 228	0

All (31) RSRZ outliers are listed below:

Mol	Chain	Res	Type	RSRZ
1	B	33	TYR	9.4
1	B	125	LYS	5.2
1	B	114	HIS	5.1
1	B	12	VAL	4.6
1	B	32	HIS	4.5
1	C	91	LEU	4.3
1	B	124	PRO	4.0
1	C	90	LEU	3.8
1	C	94	ALA	3.6
1	C	95	PHE	3.6
1	B	34	GLY	3.6
1	B	259	ILE	3.5
1	B	126	GLN	3.5
1	B	227	GLU	3.3
1	A	329	LEU	3.2
1	B	35	TYR	3.1
1	C	93	SER	3.0
1	B	254	TYR	3.0
1	A	416	GLU	2.9
1	B	253	ILE	2.9
1	B	112	GLY	2.8
1	B	228	LEU	2.5
1	A	331	SER	2.5

*Continued on next page...*

*Continued from previous page...*

Mol	Chain	Res	Type	RSRZ
1	B	203	GLN	2.5
1	C	346	VAL	2.4
1	C	86	VAL	2.3
1	B	226	GLY	2.2
1	C	308	THR	2.2
1	C	87	VAL	2.2
1	B	29	ILE	2.2
1	B	113	ILE	2.2

## 6.2 Non-standard residues in protein, DNA, RNA chains [i](#)

There are no non-standard protein/DNA/RNA residues in this entry.

## 6.3 Carbohydrates [i](#)

There are no monosaccharides in this entry.

## 6.4 Ligands [i](#)

In the following table, the Atoms column lists the number of modelled atoms in the group and the number defined in the chemical component dictionary. The B-factors column lists the minimum, median, 95<sup>th</sup> percentile and maximum values of B factors of atoms in the group. The column labelled 'Q< 0.9' lists the number of atoms with occupancy less than 0.9.

Mol	Type	Chain	Res	Atoms	RSCC	RSR	B-factors(Å <sup>2</sup> )	Q<0.9
2	NA	B	502	1/1	0.94	0.11	104,104,104,104	0
2	NA	A	502	1/1	0.95	0.09	87,87,87,87	0
2	NA	C	501	1/1	0.97	0.23	116,116,116,116	0
3	ASP	A	503	9/9	0.97	0.11	94,94,95,96	0
2	NA	C	502	1/1	0.98	0.25	105,105,105,105	0
2	NA	A	501	1/1	0.98	0.12	104,104,104,104	0
3	ASP	B	503	9/9	0.98	0.11	111,112,113,114	0
3	ASP	C	503	9/9	0.98	0.12	107,108,110,110	0
2	NA	B	501	1/1	1.00	0.13	119,119,119,119	0

## 6.5 Other polymers [i](#)

There are no such residues in this entry.