



# Full wwPDB X-ray Structure Validation Report ⓘ

Nov 1, 2021 – 01:40 pm GMT

PDB ID : 7BAX  
Title : Crystal structure of LYS11 ectodomain  
Authors : Laursen, M.; Cheng, J.; Gysel, K.; Blaise, M.; Andersen, K.R.  
Deposited on : 2020-12-16  
Resolution : 2.90 Å(reported)

This is a Full wwPDB X-ray Structure Validation Report for a publicly released PDB entry.

We welcome your comments at [validation@mail.wwpdb.org](mailto:validation@mail.wwpdb.org)

A user guide is available at

<https://www.wwpdb.org/validation/2017/XrayValidationReportHelp>

with specific help available everywhere you see the ⓘ symbol.

---

The following versions of software and data (see [references ⓘ](#)) were used in the production of this report:

MolProbity : 4.02b-467  
Mogul : 1.8.5 (274361), CSD as541be (2020)  
Xtrriage (Phenix) : 1.13  
EDS : 2.23.2  
Percentile statistics : 20191225.v01 (using entries in the PDB archive December 25th 2019)  
Refmac : 5.8.0267  
CCP4 : 7.1.010 (Gargrove)  
Ideal geometry (proteins) : Engh & Huber (2001)  
Ideal geometry (DNA, RNA) : Parkinson et al. (1996)  
Validation Pipeline (wwPDB-VP) : 2.23.2

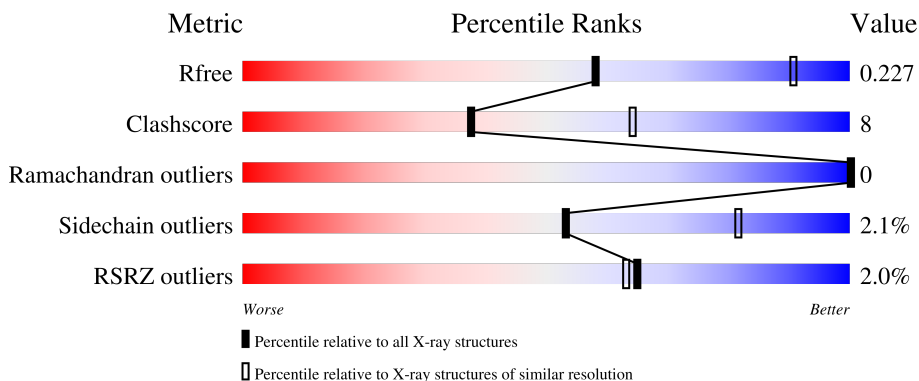
# 1 Overall quality at a glance

The following experimental techniques were used to determine the structure:

*X-RAY DIFFRACTION*

The reported resolution of this entry is 2.90 Å.

Percentile scores (ranging between 0-100) for global validation metrics of the entry are shown in the following graphic. The table shows the number of entries on which the scores are based.



Metric	Whole archive (#Entries)	Similar resolution (#Entries, resolution range(Å))
$R_{free}$	130704	1957 (2.90-2.90)
Clashscore	141614	2172 (2.90-2.90)
Ramachandran outliers	138981	2115 (2.90-2.90)
Sidechain outliers	138945	2117 (2.90-2.90)
RSRZ outliers	127900	1906 (2.90-2.90)

The table below summarises the geometric issues observed across the polymeric chains and their fit to the electron density. The red, orange, yellow and green segments of the lower bar indicate the fraction of residues that contain outliers for  $\geq 3$ , 2, 1 and 0 types of geometric quality criteria respectively. A grey segment represents the fraction of residues that are not modelled. The numeric value for each fraction is indicated below the corresponding segment, with a dot representing fractions  $\leq 5\%$ . The upper red bar (where present) indicates the fraction of residues that have poor fit to the electron density. The numeric value is given above the bar.

Mol	Chain	Length	Quality of chain
1	A	268	

## 2 Entry composition [i](#)

There are 2 unique types of molecules in this entry. The entry contains 1596 atoms, of which 0 are hydrogens and 0 are deuteriums.

In the tables below, the ZeroOcc column contains the number of atoms modelled with zero occupancy, the AltConf column contains the number of residues with at least one atom in alternate conformation and the Trace column contains the number of residues modelled with at most 2 atoms.

- Molecule 1 is a protein called LysM type receptor kinase.

Mol	Chain	Residues	Atoms					ZeroOcc	AltConf	Trace
			Total	C	N	O	S			
1	A	203	1582	1008	251	316	7	0	0	0

There are 46 discrepancies between the modelled and reference sequences:

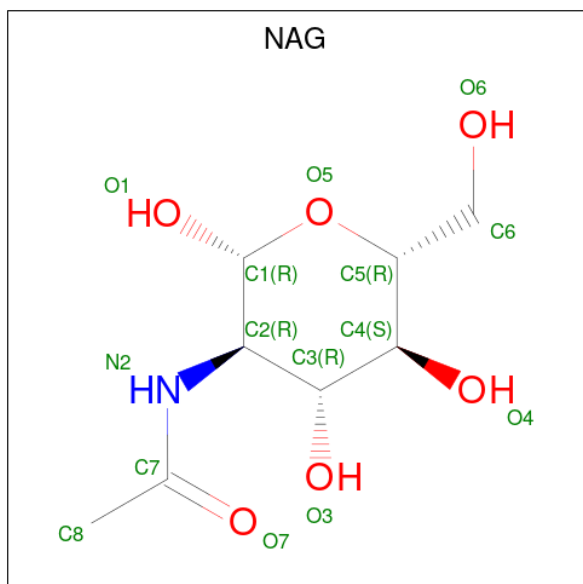
Chain	Residue	Modelled	Actual	Comment	Reference
A	-11	MET	-	initiating methionine	UNP D3KTZ8
A	-10	LEU	-	expression tag	UNP D3KTZ8
A	-9	LEU	-	expression tag	UNP D3KTZ8
A	-8	VAL	-	expression tag	UNP D3KTZ8
A	-7	ASN	-	expression tag	UNP D3KTZ8
A	-6	GLN	-	expression tag	UNP D3KTZ8
A	-5	SER	-	expression tag	UNP D3KTZ8
A	-4	HIS	-	expression tag	UNP D3KTZ8
A	-3	GLN	-	expression tag	UNP D3KTZ8
A	-2	GLY	-	expression tag	UNP D3KTZ8
A	-1	PHE	-	expression tag	UNP D3KTZ8
A	0	ASN	-	expression tag	UNP D3KTZ8
A	1	LYS	-	expression tag	UNP D3KTZ8
A	2	GLU	-	expression tag	UNP D3KTZ8
A	3	HIS	-	expression tag	UNP D3KTZ8
A	4	THR	-	expression tag	UNP D3KTZ8
A	5	SER	-	expression tag	UNP D3KTZ8
A	6	LYS	-	expression tag	UNP D3KTZ8
A	7	MET	-	expression tag	UNP D3KTZ8
A	8	VAL	-	expression tag	UNP D3KTZ8
A	9	SER	-	expression tag	UNP D3KTZ8
A	10	ALA	-	expression tag	UNP D3KTZ8
A	11	ILE	-	expression tag	UNP D3KTZ8
A	12	VAL	-	expression tag	UNP D3KTZ8
A	13	LEU	-	expression tag	UNP D3KTZ8
A	14	TYR	-	expression tag	UNP D3KTZ8
A	15	VAL	-	expression tag	UNP D3KTZ8

*Continued on next page...*

Continued from previous page...

Chain	Residue	Modelled	Actual	Comment	Reference
A	16	LEU	-	expression tag	UNP D3KTZ8
A	17	LEU	-	expression tag	UNP D3KTZ8
A	18	ALA	-	expression tag	UNP D3KTZ8
A	19	ALA	-	expression tag	UNP D3KTZ8
A	20	ALA	-	expression tag	UNP D3KTZ8
A	21	ALA	-	expression tag	UNP D3KTZ8
A	22	HIS	-	expression tag	UNP D3KTZ8
A	23	SER	-	expression tag	UNP D3KTZ8
A	24	ALA	-	expression tag	UNP D3KTZ8
A	25	PHE	-	expression tag	UNP D3KTZ8
A	26	ALA	-	expression tag	UNP D3KTZ8
A	27	LYS	-	expression tag	UNP D3KTZ8
A	250	ALA	-	expression tag	UNP D3KTZ8
A	251	HIS	-	expression tag	UNP D3KTZ8
A	252	HIS	-	expression tag	UNP D3KTZ8
A	253	HIS	-	expression tag	UNP D3KTZ8
A	254	HIS	-	expression tag	UNP D3KTZ8
A	255	HIS	-	expression tag	UNP D3KTZ8
A	256	HIS	-	expression tag	UNP D3KTZ8

- Molecule 2 is 2-acetamido-2-deoxy-beta-D-glucopyranose (three-letter code: NAG) (formula:  $C_8H_{15}NO_6$ ).



Mol	Chain	Residues	Atoms			ZeroOcc	AltConf	
			Total	C	N			O
2	A	1	14	8	1	5	0	0



## 4 Data and refinement statistics i

Property	Value	Source
Space group	P 31 2 1	Depositor
Cell constants a, b, c, $\alpha$ , $\beta$ , $\gamma$	114.94Å 114.94Å 59.15Å 90.00° 90.00° 120.00°	Depositor
Resolution (Å)	38.08 – 2.90 41.22 – 2.88	Depositor EDS
% Data completeness (in resolution range)	79.0 (38.08-2.90) 77.1 (41.22-2.88)	Depositor EDS
$R_{merge}$	(Not available)	Depositor
$R_{sym}$	(Not available)	Depositor
$\langle I/\sigma(I) \rangle$ <sup>1</sup>	2.35 (at 2.86Å)	Xtrriage
Refinement program	PHENIX 1.17.1_3660	Depositor
R, $R_{free}$	0.188 , 0.226 0.188 , 0.227	Depositor DCC
$R_{free}$ test set	859 reflections (10.62%)	wwPDB-VP
Wilson B-factor (Å <sup>2</sup> )	78.1	Xtrriage
Anisotropy	0.044	Xtrriage
Bulk solvent $k_{sol}$ (e/Å <sup>3</sup> ), $B_{sol}$ (Å <sup>2</sup> )	(Not available) , (Not available)	EDS
L-test for twinning <sup>2</sup>	$\langle  L  \rangle = 0.50$ , $\langle L^2 \rangle = 0.33$	Xtrriage
Estimated twinning fraction	0.041 for -h,-k,l	Xtrriage
$F_o, F_c$ correlation	0.94	EDS
Total number of atoms	1596	wwPDB-VP
Average B, all atoms (Å <sup>2</sup> )	77.0	wwPDB-VP

Xtrriage's analysis on translational NCS is as follows: *The largest off-origin peak in the Patterson function is 4.64% of the height of the origin peak. No significant pseudotranslation is detected.*

<sup>1</sup>Intensities estimated from amplitudes.

<sup>2</sup>Theoretical values of  $\langle |L| \rangle$ ,  $\langle L^2 \rangle$  for acentric reflections are 0.5, 0.333 respectively for untwinned datasets, and 0.375, 0.2 for perfectly twinned datasets.

## 5 Model quality [i](#)

### 5.1 Standard geometry [i](#)

Bond lengths and bond angles in the following residue types are not validated in this section: NAG

The Z score for a bond length (or angle) is the number of standard deviations the observed value is removed from the expected value. A bond length (or angle) with  $|Z| > 5$  is considered an outlier worth inspection. RMSZ is the root-mean-square of all Z scores of the bond lengths (or angles).

Mol	Chain	Bond lengths		Bond angles	
		RMSZ	# Z  >5	RMSZ	# Z  >5
1	A	0.40	0/1625	0.61	0/2230

There are no bond length outliers.

There are no bond angle outliers.

There are no chirality outliers.

There are no planarity outliers.

### 5.2 Too-close contacts [i](#)

In the following table, the Non-H and H(model) columns list the number of non-hydrogen atoms and hydrogen atoms in the chain respectively. The H(added) column lists the number of hydrogen atoms added and optimized by MolProbity. The Clashes column lists the number of clashes within the asymmetric unit, whereas Symm-Clashes lists symmetry-related clashes.

Mol	Chain	Non-H	H(model)	H(added)	Clashes	Symm-Clashes
1	A	1582	0	1509	23	0
2	A	14	0	13	1	0
All	All	1596	0	1522	24	0

The all-atom clashscore is defined as the number of clashes found per 1000 atoms (including hydrogen atoms). The all-atom clashscore for this structure is 8.

All (24) close contacts within the same asymmetric unit are listed below, sorted by their clash magnitude.

Atom-1	Atom-2	Interatomic distance (Å)	Clash overlap (Å)
1:A:153:PRO:HD2	1:A:156:ILE:HD13	1.71	0.71
1:A:123:TYR:CE2	1:A:141:GLN:HB3	2.36	0.61

*Continued on next page...*

Continued from previous page...

Atom-1	Atom-2	Interatomic distance (Å)	Clash overlap (Å)
1:A:153:PRO:O	1:A:156:ILE:HG12	2.06	0.56
1:A:78:ALA:HA	1:A:83:ILE:HD12	1.89	0.53
1:A:90:LEU:HD13	1:A:96:LEU:HD11	1.92	0.52
1:A:123:TYR:CD2	1:A:141:GLN:HB3	2.44	0.51
1:A:144:ASN:ND2	1:A:159:VAL:HG22	2.25	0.51
1:A:60:PHE:CE2	1:A:69:LEU:HD22	2.47	0.49
1:A:225:ILE:HG22	1:A:227:VAL:HG13	1.95	0.48
2:A:301:NAG:H83	2:A:301:NAG:H3	1.93	0.48
1:A:57:SER:HA	1:A:61:LEU:HD11	1.95	0.47
1:A:63:LEU:HD23	1:A:63:LEU:HA	1.64	0.47
1:A:57:SER:N	1:A:58:PRO:HD2	2.31	0.46
1:A:95:LEU:HD23	1:A:96:LEU:N	2.31	0.45
1:A:95:LEU:HD22	1:A:233:LEU:HD13	1.97	0.45
1:A:50:TYR:CE1	1:A:230:LEU:HD13	2.53	0.43
1:A:133:ASN:HD22	1:A:220:ASN:HD22	1.66	0.42
1:A:145:PRO:O	1:A:147:TYR:HD1	2.03	0.42
1:A:205:ILE:HA	1:A:210:PHE:HB2	2.02	0.41
1:A:80:ALA:HA	1:A:230:LEU:HD21	2.01	0.41
1:A:133:ASN:ND2	1:A:220:ASN:HD22	2.18	0.41
1:A:144:ASN:HD21	1:A:159:VAL:HG22	1.85	0.41
1:A:83:ILE:HD11	1:A:96:LEU:CD2	2.50	0.41
1:A:126:LEU:O	1:A:130:SER:HB2	2.22	0.40

There are no symmetry-related clashes.

## 5.3 Torsion angles [i](#)

### 5.3.1 Protein backbone [i](#)

In the following table, the Percentiles column shows the percent Ramachandran outliers of the chain as a percentile score with respect to all X-ray entries followed by that with respect to entries of similar resolution.

The Analysed column shows the number of residues for which the backbone conformation was analysed, and the total number of residues.

Mol	Chain	Analysed	Favoured	Allowed	Outliers	Percentiles
1	A	201/268 (75%)	187 (93%)	14 (7%)	0	<a href="#">100</a> <a href="#">100</a>

There are no Ramachandran outliers to report.



### 5.3.2 Protein sidechains [i](#)

In the following table, the Percentiles column shows the percent sidechain outliers of the chain as a percentile score with respect to all X-ray entries followed by that with respect to entries of similar resolution.

The Analysed column shows the number of residues for which the sidechain conformation was analysed, and the total number of residues.

Mol	Chain	Analysed	Rotameric	Outliers	Percentiles
1	A	189/245 (77%)	185 (98%)	4 (2%)	53 81

All (4) residues with a non-rotameric sidechain are listed below:

Mol	Chain	Res	Type
1	A	43	SER
1	A	114	SER
1	A	186	ASN
1	A	187	ASN

Sometimes sidechains can be flipped to improve hydrogen bonding and reduce clashes. All (1) such sidechains are listed below:

Mol	Chain	Res	Type
1	A	133	ASN

### 5.3.3 RNA [i](#)

There are no RNA molecules in this entry.

## 5.4 Non-standard residues in protein, DNA, RNA chains [i](#)

There are no non-standard protein/DNA/RNA residues in this entry.

### 5.5 Carbohydrates [i](#)

There are no monosaccharides in this entry.

### 5.6 Ligand geometry [i](#)

1 ligand is modelled in this entry.

In the following table, the Counts columns list the number of bonds (or angles) for which Mogul statistics could be retrieved, the number of bonds (or angles) that are observed in the model and the number of bonds (or angles) that are defined in the Chemical Component Dictionary. The Link column lists molecule types, if any, to which the group is linked. The Z score for a bond length (or angle) is the number of standard deviations the observed value is removed from the expected value. A bond length (or angle) with  $|Z| > 2$  is considered an outlier worth inspection. RMSZ is the root-mean-square of all Z scores of the bond lengths (or angles).

Mol	Type	Chain	Res	Link	Bond lengths			Bond angles		
					Counts	RMSZ	# Z  > 2	Counts	RMSZ	# Z  > 2
2	NAG	A	301	1	14,14,15	0.52	0	17,19,21	1.27	1 (5%)

In the following table, the Chirals column lists the number of chiral outliers, the number of chiral centers analysed, the number of these observed in the model and the number defined in the Chemical Component Dictionary. Similar counts are reported in the Torsion and Rings columns. '-' means no outliers of that kind were identified.

Mol	Type	Chain	Res	Link	Chirals	Torsions	Rings
2	NAG	A	301	1	-	6/6/23/26	0/1/1/1

There are no bond length outliers.

All (1) bond angle outliers are listed below:

Mol	Chain	Res	Type	Atoms	Z	Observed(°)	Ideal(°)
2	A	301	NAG	C2-N2-C7	4.32	129.05	122.90

There are no chirality outliers.

All (6) torsion outliers are listed below:

Mol	Chain	Res	Type	Atoms
2	A	301	NAG	O5-C5-C6-O6
2	A	301	NAG	C8-C7-N2-C2
2	A	301	NAG	O7-C7-N2-C2
2	A	301	NAG	C4-C5-C6-O6
2	A	301	NAG	C3-C2-N2-C7
2	A	301	NAG	C1-C2-N2-C7

There are no ring outliers.

1 monomer is involved in 1 short contact:

Mol	Chain	Res	Type	Clashes	Symm-Clashes
2	A	301	NAG	1	0

## 5.7 Other polymers [i](#)

There are no such residues in this entry.

## 5.8 Polymer linkage issues [i](#)

There are no chain breaks in this entry.

## 6 Fit of model and data [i](#)

### 6.1 Protein, DNA and RNA chains [i](#)

In the following table, the column labelled ‘#RSRZ> 2’ contains the number (and percentage) of RSRZ outliers, followed by percent RSRZ outliers for the chain as percentile scores relative to all X-ray entries and entries of similar resolution. The OWAB column contains the minimum, median, 95<sup>th</sup> percentile and maximum values of the occupancy-weighted average B-factor per residue. The column labelled ‘Q< 0.9’ lists the number of (and percentage) of residues with an average occupancy less than 0.9.

Mol	Chain	Analysed	<RSRZ>	#RSRZ>2	OWAB(Å <sup>2</sup> )	Q<0.9
1	A	203/268 (75%)	-0.13	4 (1%) 65 63	30, 70, 125, 163	0

All (4) RSRZ outliers are listed below:

Mol	Chain	Res	Type	RSRZ
1	A	57	SER	2.4
1	A	146	ASN	2.3
1	A	35	THR	2.1
1	A	151	LEU	2.0

### 6.2 Non-standard residues in protein, DNA, RNA chains [i](#)

There are no non-standard protein/DNA/RNA residues in this entry.

### 6.3 Carbohydrates [i](#)

There are no monosaccharides in this entry.

### 6.4 Ligands [i](#)

In the following table, the Atoms column lists the number of modelled atoms in the group and the number defined in the chemical component dictionary. The B-factors column lists the minimum, median, 95<sup>th</sup> percentile and maximum values of B factors of atoms in the group. The column labelled ‘Q< 0.9’ lists the number of atoms with occupancy less than 0.9.

Mol	Type	Chain	Res	Atoms	RSCC	RSR	B-factors(Å <sup>2</sup> )	Q<0.9
2	NAG	A	301	14/15	0.69	0.28	129,164,170,171	0

## 6.5 Other polymers [i](#)

There are no such residues in this entry.