



Full wwPDB X-ray Structure Validation Report ⓘ

Oct 23, 2021 – 11:04 AM EDT

PDB ID : 1BCH
Title : MANNOSE-BINDING PROTEIN-A MUTANT (QPDWGH) COMPLEXED WITH N-ACETYL-D-GALACTOSAMINE
Authors : Kolatkar, A.R.; Weis, W.I.
Deposited on : 1998-04-30
Resolution : 2.00 Å(reported)

This is a Full wwPDB X-ray Structure Validation Report for a publicly released PDB entry.

We welcome your comments at validation@mail.wwpdb.org

A user guide is available at

<https://www.wwpdb.org/validation/2017/XrayValidationReportHelp>

with specific help available everywhere you see the ⓘ symbol.

The following versions of software and data (see [references ⓘ](#)) were used in the production of this report:

MolProbity : 4.02b-467
Mogul : 1.8.5 (274361), CSD as541be (2020)
Xtriage (Phenix) : 1.13
EDS : 2.23.2
Percentile statistics : 20191225.v01 (using entries in the PDB archive December 25th 2019)
Refmac : 5.8.0158
CCP4 : 7.0.044 (Gargrove)
Ideal geometry (proteins) : Engh & Huber (2001)
Ideal geometry (DNA, RNA) : Parkinson et al. (1996)
Validation Pipeline (wwPDB-VP) : 2.23.2

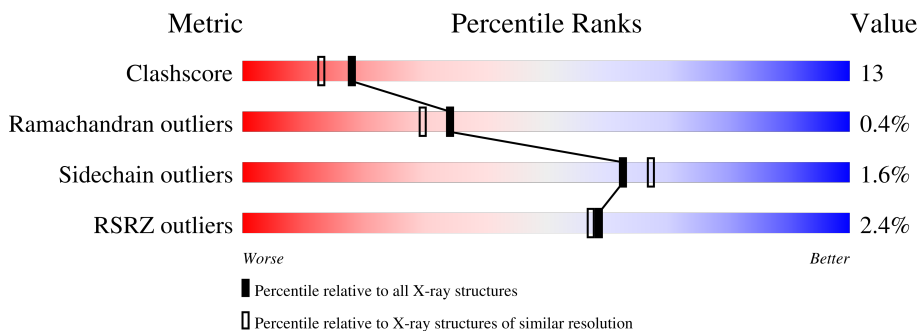
1 Overall quality at a glance

The following experimental techniques were used to determine the structure:

X-RAY DIFFRACTION

The reported resolution of this entry is 2.00 Å.

Percentile scores (ranging between 0-100) for global validation metrics of the entry are shown in the following graphic. The table shows the number of entries on which the scores are based.



Metric	Whole archive (#Entries)	Similar resolution (#Entries, resolution range(Å))
Clashscore	141614	9178 (2.00-2.00)
Ramachandran outliers	138981	9054 (2.00-2.00)
Sidechain outliers	138945	9053 (2.00-2.00)
RSRZ outliers	127900	7900 (2.00-2.00)

The table below summarises the geometric issues observed across the polymeric chains and their fit to the electron density. The red, orange, yellow and green segments of the lower bar indicate the fraction of residues that contain outliers for ≥ 3 , 2, 1 and 0 types of geometric quality criteria respectively. A grey segment represents the fraction of residues that are not modelled. The numeric value for each fraction is indicated below the corresponding segment, with a dot representing fractions $\leq 5\%$. The upper red bar (where present) indicates the fraction of residues that have poor fit to the electron density. The numeric value is given above the bar.

Mol	Chain	Length	Quality of chain
1	1	154	
1	2	154	
1	3	154	

The following table lists non-polymeric compounds, carbohydrate monomers and non-standard residues in protein, DNA, RNA chains that are outliers for geometric or electron-density-fit criteria:

Mol	Type	Chain	Res	Chirality	Geometry	Clashes	Electron density
2	A2G	1	1[A]	X	-	-	-

2 Entry composition

There are 7 unique types of molecules in this entry. The entry contains 3987 atoms, of which 0 are hydrogens and 0 are deuteriums.

In the tables below, the ZeroOcc column contains the number of atoms modelled with zero occupancy, the AltConf column contains the number of residues with at least one atom in alternate conformation and the Trace column contains the number of residues modelled with at most 2 atoms.

- Molecule 1 is a protein called MANNOSE-BINDING PROTEIN-A.

Mol	Chain	Residues	Atoms					ZeroOcc	AltConf	Trace
			Total	C	N	O	S			
1	1	154	1196	752	206	230	8	0	0	0
1	2	154	1196	752	206	230	8	0	0	0
1	3	154	1196	752	206	230	8	0	0	0

There are 33 discrepancies between the modelled and reference sequences:

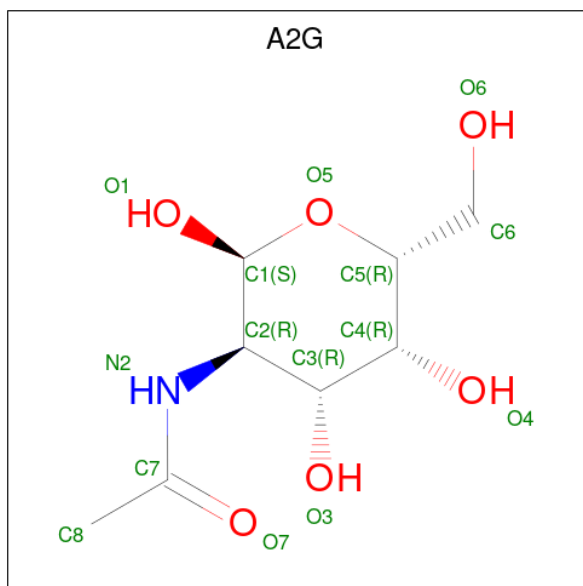
Chain	Residue	Modelled	Actual	Comment	Reference
1	185	GLN	GLU	engineered mutation	UNP P19999
1	187	ASP	ASN	engineered mutation	UNP P19999
1	189	TRP	HIS	engineered mutation	UNP P19999
1	190	TYR	GLY	engineered mutation	UNP P19999
1	191	GLY	SER	engineered mutation	UNP P19999
1	192	HIS	-	insertion	UNP P19999
1	193	GLY	-	insertion	UNP P19999
1	194	LEU	-	insertion	UNP P19999
1	195	GLY	-	insertion	UNP P19999
1	196	GLY	-	insertion	UNP P19999
1	202	HIS	THR	engineered mutation	UNP P19999
2	185	GLN	GLU	engineered mutation	UNP P19999
2	187	ASP	ASN	engineered mutation	UNP P19999
2	189	TRP	HIS	engineered mutation	UNP P19999
2	190	TYR	GLY	engineered mutation	UNP P19999
2	191	GLY	SER	engineered mutation	UNP P19999
2	192	HIS	-	insertion	UNP P19999
2	193	GLY	-	insertion	UNP P19999
2	194	LEU	-	insertion	UNP P19999
2	195	GLY	-	insertion	UNP P19999
2	196	GLY	-	insertion	UNP P19999
2	202	HIS	THR	engineered mutation	UNP P19999
3	185	GLN	GLU	engineered mutation	UNP P19999

Continued on next page...

Continued from previous page...

Chain	Residue	Modelled	Actual	Comment	Reference
3	187	ASP	ASN	engineered mutation	UNP P19999
3	189	TRP	HIS	engineered mutation	UNP P19999
3	190	TYR	GLY	engineered mutation	UNP P19999
3	191	GLY	SER	engineered mutation	UNP P19999
3	192	HIS	-	insertion	UNP P19999
3	193	GLY	-	insertion	UNP P19999
3	194	LEU	-	insertion	UNP P19999
3	195	GLY	-	insertion	UNP P19999
3	196	GLY	-	insertion	UNP P19999
3	202	HIS	THR	engineered mutation	UNP P19999

- Molecule 2 is 2-acetamido-2-deoxy-alpha-D-galactopyranose (three-letter code: A2G) (formula: C₈H₁₅NO₆).



Mol	Chain	Residues	Atoms				ZeroOcc	AltConf
			Total	C	N	O		
2	1	1	30	16	2	12	0	1

- Molecule 3 is CALCIUM ION (three-letter code: CA) (formula: Ca).

Mol	Chain	Residues	Atoms	ZeroOcc	AltConf
3	1	3	Total Ca 3 3	0	0
3	2	3	Total Ca 3 3	0	0

Continued on next page...

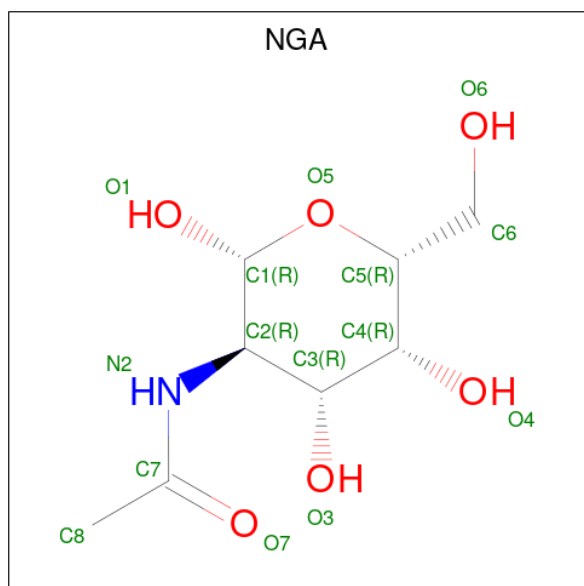
Continued from previous page...

Mol	Chain	Residues	Atoms	ZeroOcc	AltConf
3	3	3	Total Ca 3 3	0	0

- Molecule 4 is CHLORIDE ION (three-letter code: CL) (formula: Cl).

Mol	Chain	Residues	Atoms	ZeroOcc	AltConf
4	1	1	Total Cl 1 1	0	0
4	2	1	Total Cl 1 1	0	0
4	3	1	Total Cl 1 1	0	0

- Molecule 5 is 2-acetamido-2-deoxy-beta-D-galactopyranose (three-letter code: NGA) (formula: C₈H₁₅NO₆).



Mol	Chain	Residues	Atoms	ZeroOcc	AltConf
5	2	1	Total C N O 15 8 1 6	0	0
5	3	1	Total C N O 15 8 1 6	0	0

- Molecule 6 is SODIUM ION (three-letter code: NA) (formula: Na).

Mol	Chain	Residues	Atoms		ZeroOcc	AltConf
6	2	1	Total 1	Na 1	0	0

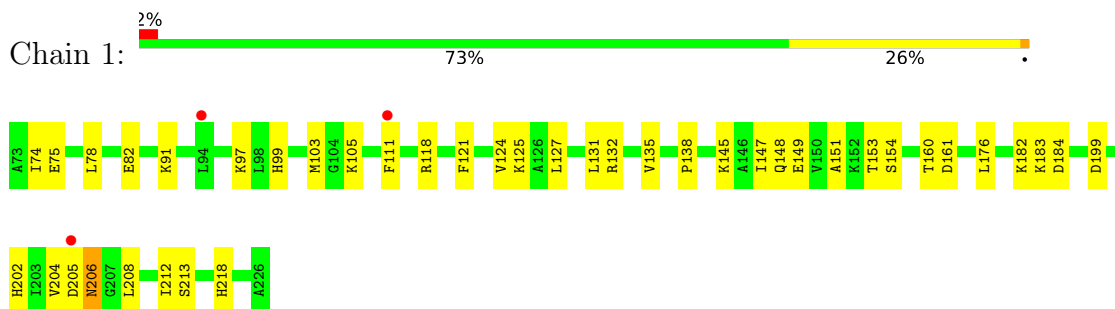
- Molecule 7 is water.

Mol	Chain	Residues	Atoms		ZeroOcc	AltConf
7	1	132	Total 132	O 132	0	0
7	2	85	Total 85	O 85	0	0
7	3	109	Total 109	O 109	0	0

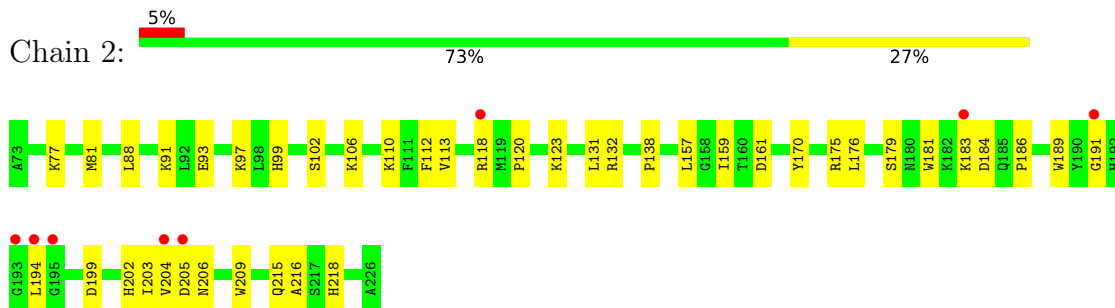
3 Residue-property plots

These plots are drawn for all protein, RNA, DNA and oligosaccharide chains in the entry. The first graphic for a chain summarises the proportions of the various outlier classes displayed in the second graphic. The second graphic shows the sequence view annotated by issues in geometry and electron density. Residues are color-coded according to the number of geometric quality criteria for which they contain at least one outlier: green = 0, yellow = 1, orange = 2 and red = 3 or more. A red dot above a residue indicates a poor fit to the electron density ($RSRZ > 2$). Stretches of 2 or more consecutive residues without any outlier are shown as a green connector. Residues present in the sample, but not in the model, are shown in grey.

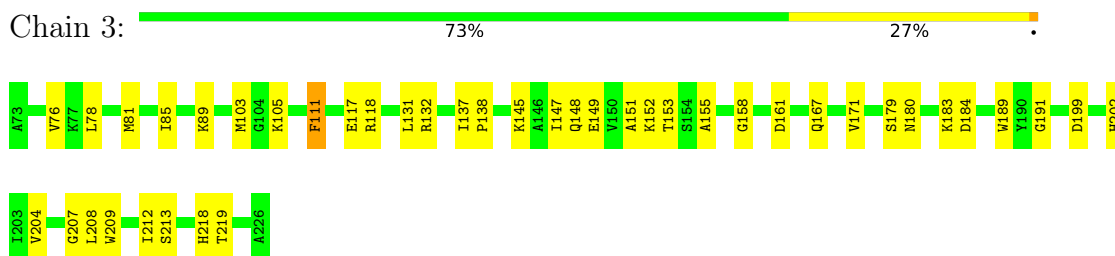
- Molecule 1: MANNOSE-BINDING PROTEIN-A



- Molecule 1: MANNOSE-BINDING PROTEIN-A



- Molecule 1: MANNOSE-BINDING PROTEIN-A



4 Data and refinement statistics i

Property	Value	Source
Space group	C 1 2 1	Depositor
Cell constants a, b, c, α , β , γ	80.49Å 85.01Å 98.71Å 90.00° 104.82° 90.00°	Depositor
Resolution (Å)	30.00 – 2.00 39.76 – 2.00	Depositor EDS
% Data completeness (in resolution range)	96.4 (30.00-2.00) 96.6 (39.76-2.00)	Depositor EDS
R_{merge}	0.04	Depositor
R_{sym}	0.04	Depositor
$\langle I/\sigma(I) \rangle$ ¹	4.03 (at 2.00Å)	Xtrriage
Refinement program	CNS	Depositor
R, R_{free}	0.219 , 0.252 0.222 , (Not available)	Depositor DCC
R_{free} test set	No test flags present.	wwPDB-VP
Wilson B-factor (Å ²)	29.0	Xtrriage
Anisotropy	0.240	Xtrriage
Bulk solvent k_{sol} (e/Å ³), B_{sol} (Å ²)	0.32 , 42.9	EDS
L-test for twinning ²	$\langle L \rangle = 0.50$, $\langle L^2 \rangle = 0.33$	Xtrriage
Estimated twinning fraction	No twinning to report.	Xtrriage
F_o, F_c correlation	0.94	EDS
Total number of atoms	3987	wwPDB-VP
Average B, all atoms (Å ²)	36.0	wwPDB-VP

Xtrriage's analysis on translational NCS is as follows: *The largest off-origin peak in the Patterson function is 5.69% of the height of the origin peak. No significant pseudotranslation is detected.*

¹Intensities estimated from amplitudes.

²Theoretical values of $\langle |L| \rangle$, $\langle L^2 \rangle$ for acentric reflections are 0.5, 0.333 respectively for untwinned datasets, and 0.375, 0.2 for perfectly twinned datasets.

5 Model quality [i](#)

5.1 Standard geometry [i](#)

Bond lengths and bond angles in the following residue types are not validated in this section: NGA, A2G, NA, CA, CL

The Z score for a bond length (or angle) is the number of standard deviations the observed value is removed from the expected value. A bond length (or angle) with $|Z| > 5$ is considered an outlier worth inspection. RMSZ is the root-mean-square of all Z scores of the bond lengths (or angles).

Mol	Chain	Bond lengths		Bond angles	
		RMSZ	# Z >5	RMSZ	# Z >5
1	1	0.37	0/1220	0.64	0/1643
1	2	0.36	0/1220	0.58	0/1643
1	3	0.36	0/1220	0.60	0/1643
All	All	0.36	0/3660	0.61	0/4929

There are no bond length outliers.

There are no bond angle outliers.

There are no chirality outliers.

There are no planarity outliers.

5.2 Too-close contacts [i](#)

In the following table, the Non-H and H(model) columns list the number of non-hydrogen atoms and hydrogen atoms in the chain respectively. The H(added) column lists the number of hydrogen atoms added and optimized by MolProbity. The Clashes column lists the number of clashes within the asymmetric unit, whereas Symm-Clashes lists symmetry-related clashes.

Mol	Chain	Non-H	H(model)	H(added)	Clashes	Symm-Clashes
1	1	1196	0	1167	34	0
1	2	1196	0	1167	40	0
1	3	1196	0	1167	37	0
2	1	30	0	20	0	0
3	1	3	0	0	0	0
3	2	3	0	0	0	0
3	3	3	0	0	0	0
4	1	1	0	0	0	0
4	2	1	0	0	0	0
4	3	1	0	0	0	0

Continued on next page...

Continued from previous page...

Mol	Chain	Non-H	H(model)	H(added)	Clashes	Symm-Clashes
5	2	15	0	14	0	0
5	3	15	0	13	0	0
6	2	1	0	0	0	0
7	1	132	0	0	1	0
7	2	85	0	0	2	0
7	3	109	0	0	1	1
All	All	3987	0	3548	97	1

The all-atom clashscore is defined as the number of clashes found per 1000 atoms (including hydrogen atoms). The all-atom clashscore for this structure is 13.

All (97) close contacts within the same asymmetric unit are listed below, sorted by their clash magnitude.

Atom-1	Atom-2	Interatomic distance (Å)	Clash overlap (Å)
1:2:120:PRO:HD2	1:2:123:LYS:HG3	1.57	0.87
1:3:118:ARG:HH11	1:3:218:HIS:HA	1.44	0.81
1:1:121:PHE:CE2	1:1:125:LYS:HD2	2.19	0.78
1:3:138:PRO:HG3	1:3:147:ILE:HD12	1.67	0.77
1:1:74:ILE:HG23	1:1:75:GLU:HG3	1.67	0.77
1:2:88:LEU:HD21	1:3:89:LYS:HG2	1.67	0.74
1:3:118:ARG:NH1	1:3:218:HIS:HA	2.02	0.74
1:1:105:LYS:HG3	1:1:111:PHE:HB3	1.70	0.72
1:2:161:ASP:OD1	1:2:199:ASP:HA	1.96	0.66
1:1:161:ASP:OD1	1:1:199:ASP:HA	1.97	0.65
1:1:74:ILE:HG23	1:1:75:GLU:N	2.13	0.63
1:1:145:LYS:HD2	1:1:148:GLN:NE2	2.14	0.61
1:2:194:LEU:HG	1:2:215:GLN:NE2	2.15	0.60
1:3:153:THR:HG23	1:3:219:THR:OG1	2.00	0.60
1:2:81:MET:HE3	1:3:85:ILE:HD12	1.84	0.60
1:3:76:VAL:HG23	7:3:257:HOH:O	2.02	0.60
1:1:160:THR:HB	1:1:199:ASP:O	2.02	0.59
1:3:161:ASP:OD1	1:3:199:ASP:HA	2.01	0.59
1:3:105:LYS:HG3	1:3:111:PHE:HB3	1.84	0.59
1:1:97:LYS:HG2	1:2:131:LEU:HD21	1.85	0.57
1:3:155:ALA:HB2	1:3:219:THR:HB	1.87	0.57
1:3:167:GLN:HE21	1:3:167:GLN:HA	1.70	0.56
1:1:205:ASP:O	1:1:206:ASN:HB3	2.04	0.56
1:2:91:LYS:HB3	1:2:91:LYS:NZ	2.21	0.56
1:1:206:ASN:HD21	1:1:208:LEU:HD12	1.69	0.56
1:2:181:TRP:CE3	1:2:186:PRO:HG3	2.42	0.55
1:2:203:ILE:HG22	1:2:204:VAL:N	2.20	0.55

Continued on next page...

Continued from previous page...

Atom-1	Atom-2	Interatomic distance (Å)	Clash overlap (Å)
1:1:204:VAL:HG23	1:1:206:ASN:OD1	2.06	0.54
1:2:183:LYS:O	1:2:184:ASP:HB2	2.07	0.54
1:2:106:LYS:HD2	1:3:117:GLU:HG3	1.90	0.53
1:1:206:ASN:ND2	1:1:208:LEU:HD12	2.24	0.52
1:1:205:ASP:O	1:1:206:ASN:CB	2.57	0.52
1:3:151:ALA:C	1:3:153:THR:H	2.13	0.52
1:1:138:PRO:HG3	1:1:147:ILE:HD12	1.91	0.52
1:2:99:HIS:HD2	7:2:237:HOH:O	1.92	0.52
1:2:118:ARG:NH2	1:2:218:HIS:ND1	2.58	0.52
1:2:181:TRP:CZ3	1:2:186:PRO:HG3	2.44	0.51
1:2:189:TRP:CE2	1:2:191:GLY:HA3	2.46	0.50
1:2:81:MET:HE1	1:3:81:MET:HB2	1.94	0.49
1:2:179:SER:HA	1:2:209:TRP:CH2	2.48	0.49
1:2:194:LEU:HG	1:2:215:GLN:HE21	1.76	0.49
1:1:145:LYS:HA	1:1:148:GLN:HE21	1.76	0.49
1:2:176:LEU:HD21	1:2:179:SER:HB3	1.93	0.49
1:1:82:GLU:HB2	1:3:81:MET:CE	2.43	0.49
1:3:189:TRP:CZ2	1:3:191:GLY:HA3	2.47	0.49
1:2:110:LYS:HE3	1:2:112:PHE:CZ	2.47	0.48
1:2:175:ARG:HG3	1:2:175:ARG:HH11	1.79	0.48
1:3:145:LYS:O	1:3:149:GLU:HG3	2.13	0.48
1:3:183:LYS:O	1:3:184:ASP:HB2	2.13	0.47
1:1:151:ALA:C	1:1:153:THR:H	2.18	0.47
1:3:189:TRP:CE2	1:3:191:GLY:HA3	2.50	0.47
1:1:82:GLU:HB2	1:3:81:MET:HE2	1.97	0.47
1:2:81:MET:HE1	1:3:81:MET:CB	2.45	0.46
1:3:167:GLN:HA	1:3:167:GLN:NE2	2.30	0.46
1:1:118:ARG:NH2	1:1:218:HIS:ND1	2.63	0.46
1:2:88:LEU:HD11	1:3:89:LYS:HG3	1.98	0.46
1:2:204:VAL:HG12	1:2:205:ASP:N	2.31	0.46
1:1:118:ARG:HH22	1:1:154:SER:HB3	1.80	0.45
1:2:93:GLU:HG3	1:2:97:LYS:NZ	2.30	0.45
1:3:151:ALA:O	1:3:152:LYS:HB2	2.16	0.45
1:1:74:ILE:CG2	1:1:75:GLU:N	2.79	0.45
1:1:97:LYS:HG2	1:2:131:LEU:CD2	2.46	0.45
1:1:127:LEU:C	1:1:127:LEU:HD23	2.36	0.45
1:1:103:MET:HA	1:1:103:MET:CE	2.46	0.45
1:1:131:LEU:O	1:1:132:ARG:HB2	2.16	0.45
1:2:120:PRO:HA	1:2:216:ALA:O	2.16	0.45
1:1:212:ILE:HG13	1:1:213:SER:N	2.32	0.45
1:3:158:GLY:C	1:3:171:VAL:HG13	2.37	0.45

Continued on next page...

Continued from previous page...

Atom-1	Atom-2	Interatomic distance (Å)	Clash overlap (Å)
1:3:179:SER:HA	1:3:209:TRP:CH2	2.52	0.45
1:2:102:SER:HB2	1:3:103:MET:CE	2.48	0.44
1:3:212:ILE:HG13	1:3:213:SER:N	2.32	0.44
1:1:99:HIS:HD2	7:1:240:HOH:O	2.01	0.44
1:2:77:LYS:HD2	1:3:78:LEU:HD23	2.00	0.44
1:3:148:GLN:OE1	1:3:207:GLY:HA3	2.18	0.44
1:1:91:LYS:HE2	1:1:91:LYS:HB3	1.88	0.43
1:2:120:PRO:HD2	1:2:123:LYS:CG	2.38	0.43
1:1:206:ASN:ND2	1:1:208:LEU:HG	2.33	0.43
1:1:74:ILE:HG23	1:1:75:GLU:H	1.80	0.43
1:1:183:LYS:O	1:1:184:ASP:HB2	2.19	0.43
1:2:157:LEU:HD21	1:2:203:ILE:HD11	2.00	0.43
1:2:132:ARG:N	1:2:132:ARG:HD2	2.33	0.43
1:2:138:PRO:HD3	1:2:157:LEU:HD22	2.00	0.43
1:1:78:LEU:HD21	1:3:78:LEU:HD13	1.99	0.43
1:3:131:LEU:O	1:3:132:ARG:HB2	2.19	0.42
1:2:157:LEU:HD21	1:2:203:ILE:CD1	2.50	0.42
1:2:203:ILE:CG2	1:2:204:VAL:N	2.82	0.42
1:1:182:LYS:HA	1:1:208:LEU:HD13	2.00	0.42
1:2:77:LYS:HD2	1:3:78:LEU:CD2	2.49	0.42
1:3:180:ASN:ND2	1:3:208:LEU:HA	2.34	0.42
1:2:113:VAL:HG23	7:2:308:HOH:O	2.19	0.41
1:3:155:ALA:CB	1:3:219:THR:HB	2.49	0.41
1:3:137:ILE:HA	1:3:138:PRO:HD3	1.90	0.41
1:1:124:VAL:HG12	1:1:135:VAL:HG22	2.02	0.41
1:2:204:VAL:HB	1:2:206:ASN:OD1	2.21	0.41
1:2:181:TRP:CD2	1:2:186:PRO:HG3	2.56	0.41
1:3:167:GLN:HE21	1:3:167:GLN:CA	2.29	0.41
1:2:159:ILE:CD1	1:2:170:TYR:CD1	3.04	0.41

All (1) symmetry-related close contacts are listed below. The label for Atom-2 includes the symmetry operator and encoded unit-cell translations to be applied.

Atom-1	Atom-2	Interatomic distance (Å)	Clash overlap (Å)
7:3:265:HOH:O	7:3:265:HOH:O[2_556]	2.09	0.11

5.3 Torsion angles [i](#)

5.3.1 Protein backbone [i](#)

In the following table, the Percentiles column shows the percent Ramachandran outliers of the chain as a percentile score with respect to all X-ray entries followed by that with respect to entries of similar resolution.

The Analysed column shows the number of residues for which the backbone conformation was analysed, and the total number of residues.

Mol	Chain	Analysed	Favoured	Allowed	Outliers	Percentiles	
1	1	152/154 (99%)	145 (95%)	6 (4%)	1 (1%)	22	16
1	2	152/154 (99%)	146 (96%)	6 (4%)	0	100	100
1	3	152/154 (99%)	147 (97%)	4 (3%)	1 (1%)	22	16
All	All	456/462 (99%)	438 (96%)	16 (4%)	2 (0%)	34	30

All (2) Ramachandran outliers are listed below:

Mol	Chain	Res	Type
1	1	206	ASN
1	3	204	VAL

5.3.2 Protein sidechains [i](#)

In the following table, the Percentiles column shows the percent sidechain outliers of the chain as a percentile score with respect to all X-ray entries followed by that with respect to entries of similar resolution.

The Analysed column shows the number of residues for which the sidechain conformation was analysed, and the total number of residues.

Mol	Chain	Analysed	Rotameric	Outliers	Percentiles	
1	1	128/128 (100%)	125 (98%)	3 (2%)	50	53
1	2	128/128 (100%)	127 (99%)	1 (1%)	81	86
1	3	128/128 (100%)	126 (98%)	2 (2%)	62	67
All	All	384/384 (100%)	378 (98%)	6 (2%)	62	67

All (6) residues with a non-rotameric sidechain are listed below:

Mol	Chain	Res	Type
1	1	149	GLU

Continued on next page...

Continued from previous page...

Mol	Chain	Res	Type
1	1	176	LEU
1	1	202	HIS
1	2	202	HIS
1	3	111	PHE
1	3	202	HIS

Sometimes sidechains can be flipped to improve hydrogen bonding and reduce clashes. All (12) such sidechains are listed below:

Mol	Chain	Res	Type
1	1	96	ASN
1	1	99	HIS
1	1	116	HIS
1	1	148	GLN
1	2	80	ASN
1	2	96	ASN
1	2	99	HIS
1	2	180	ASN
1	2	215	GLN
1	3	96	ASN
1	3	99	HIS
1	3	167	GLN

5.3.3 RNA [i](#)

There are no RNA molecules in this entry.

5.4 Non-standard residues in protein, DNA, RNA chains [i](#)

There are no non-standard protein/DNA/RNA residues in this entry.

5.5 Carbohydrates [i](#)

There are no monosaccharides in this entry.

5.6 Ligand geometry [i](#)

Of 17 ligands modelled in this entry, 13 are monoatomic - leaving 4 for Mogul analysis.

In the following table, the Counts columns list the number of bonds (or angles) for which Mogul statistics could be retrieved, the number of bonds (or angles) that are observed in the model and the number of bonds (or angles) that are defined in the Chemical Component Dictionary. The Link column lists molecule types, if any, to which the group is linked. The Z score for a bond length (or angle) is the number of standard deviations the observed value is removed from the expected value. A bond length (or angle) with $|Z| > 2$ is considered an outlier worth inspection. RMSZ is the root-mean-square of all Z scores of the bond lengths (or angles).

Mol	Type	Chain	Res	Link	Bond lengths			Bond angles		
					Counts	RMSZ	# Z > 2	Counts	RMSZ	# Z > 2
2	A2G	1	1[A]	3	15,15,15	0.42	0	21,21,21	0.56	0
5	NGA	3	1	3	15,15,15	0.46	0	21,21,21	0.70	0
2	A2G	1	1[B]	3	15,15,15	0.43	0	21,21,21	0.55	0
5	NGA	2	1	3	15,15,15	0.53	0	21,21,21	0.60	0

In the following table, the Chirals column lists the number of chiral outliers, the number of chiral centers analysed, the number of these observed in the model and the number defined in the Chemical Component Dictionary. Similar counts are reported in the Torsion and Rings columns. '2' means no outliers of that kind were identified.

Mol	Type	Chain	Res	Link	Chirals	Torsions	Rings
2	A2G	1	1[A]	3	1/1/6/7	0/6/26/26	0/1/1/1
5	NGA	3	1	3	-	1/6/26/26	0/1/1/1
2	A2G	1	1[B]	3	-	0/6/26/26	0/1/1/1
5	NGA	2	1	3	-	2/6/26/26	0/1/1/1

There are no bond length outliers.

There are no bond angle outliers.

All (1) chirality outliers are listed below:

Mol	Chain	Res	Type	Atom
2	1	1[A]	A2G	C1

All (3) torsion outliers are listed below:

Mol	Chain	Res	Type	Atoms
5	2	1	NGA	O5-C5-C6-O6
5	2	1	NGA	C4-C5-C6-O6
5	3	1	NGA	C4-C5-C6-O6

There are no ring outliers.

No monomer is involved in short contacts.

5.7 Other polymers [i](#)

There are no such residues in this entry.

5.8 Polymer linkage issues [i](#)

There are no chain breaks in this entry.

6 Fit of model and data [i](#)

6.1 Protein, DNA and RNA chains [i](#)

In the following table, the column labelled ‘#RSRZ > 2’ contains the number (and percentage) of RSRZ outliers, followed by percent RSRZ outliers for the chain as percentile scores relative to all X-ray entries and entries of similar resolution. The OWAB column contains the minimum, median, 95th percentile and maximum values of the occupancy-weighted average B-factor per residue. The column labelled ‘Q < 0.9’ lists the number of (and percentage) of residues with an average occupancy less than 0.9.

Mol	Chain	Analysed	<RSRZ>	#RSRZ>2	OWAB(Å ²)	Q<0.9
1	1	154/154 (100%)	-0.02	3 (1%) 66 65	20, 31, 44, 57	0
1	2	154/154 (100%)	0.24	8 (5%) 27 26	24, 38, 58, 71	0
1	3	154/154 (100%)	-0.18	0 100 100	23, 35, 49, 57	0
All	All	462/462 (100%)	0.01	11 (2%) 59 57	20, 35, 52, 71	0

All (11) RSRZ outliers are listed below:

Mol	Chain	Res	Type	RSRZ
1	2	205	ASP	7.3
1	2	194	LEU	4.7
1	1	205	ASP	4.2
1	2	204	VAL	3.7
1	2	183	LYS	3.0
1	2	191	GLY	2.8
1	1	111	PHE	2.8
1	2	195	GLY	2.7
1	2	193	GLY	2.3
1	1	94	LEU	2.1
1	2	118	ARG	2.0

6.2 Non-standard residues in protein, DNA, RNA chains [i](#)

There are no non-standard protein/DNA/RNA residues in this entry.

6.3 Carbohydrates [i](#)

There are no monosaccharides in this entry.

6.4 Ligands [i](#)

In the following table, the Atoms column lists the number of modelled atoms in the group and the number defined in the chemical component dictionary. The B-factors column lists the minimum, median, 95th percentile and maximum values of B factors of atoms in the group. The column labelled 'Q<0.9' lists the number of atoms with occupancy less than 0.9.

Mol	Type	Chain	Res	Atoms	RSCC	RSR	B-factors(Å ²)	Q<0.9
4	CL	2	4	1/1	0.76	0.16	61,61,61,61	0
5	NGA	3	1	15/15	0.84	0.14	43,46,50,51	0
5	NGA	2	1	15/15	0.85	0.16	39,42,47,50	0
2	A2G	1	1[B]	15/15	0.92	0.23	19,21,23,25	15
2	A2G	1	1[A]	15/15	0.92	0.23	23,25,26,29	15
3	CA	3	2	1/1	0.96	0.08	35,35,35,35	0
3	CA	2	3	1/1	0.96	0.09	48,48,48,48	0
3	CA	2	2	1/1	0.97	0.05	35,35,35,35	0
4	CL	3	4	1/1	0.98	0.08	39,39,39,39	0
3	CA	2	227	1/1	0.98	0.07	34,34,34,34	0
3	CA	3	227	1/1	0.98	0.08	27,27,27,27	0
6	NA	2	5	1/1	0.98	0.06	36,36,36,36	0
3	CA	1	227	1/1	0.99	0.10	26,26,26,26	0
3	CA	1	2	1/1	0.99	0.10	28,28,28,28	0
4	CL	1	4	1/1	0.99	0.07	43,43,43,43	0
3	CA	1	3	1/1	0.99	0.10	25,25,25,25	0
3	CA	3	3	1/1	1.00	0.09	27,27,27,27	0

6.5 Other polymers [i](#)

There are no such residues in this entry.