



# Full wwPDB X-ray Structure Validation Report ⓘ

Sep 26, 2023 – 04:28 AM EDT

PDB ID : 6BDL  
Title : Crystal structure of cGMP-dependent protein kinase Ialpha (PKG Ialpha) catalytic domain in apo state  
Authors : Qin, L.; Sankaran, B.; Kim, C.  
Deposited on : 2017-10-23  
Resolution : 1.96 Å(reported)

This is a Full wwPDB X-ray Structure Validation Report for a publicly released PDB entry.

We welcome your comments at [validation@mail.wwpdb.org](mailto:validation@mail.wwpdb.org)

A user guide is available at

<https://www.wwpdb.org/validation/2017/XrayValidationReportHelp>

with specific help available everywhere you see the ⓘ symbol.

The types of validation reports are described at

<http://www.wwpdb.org/validation/2017/FAQs#types>.

---

The following versions of software and data (see [references ⓘ](#)) were used in the production of this report:

MolProbity : 4.02b-467  
Mogul : 1.8.5 (274361), CSD as541be (2020)  
Xtriage (Phenix) : 1.13  
EDS : 2.35.1  
Percentile statistics : 20191225.v01 (using entries in the PDB archive December 25th 2019)  
Refmac : 5.8.0158  
CCP4 : 7.0.044 (Gargrove)  
Ideal geometry (proteins) : Engh & Huber (2001)  
Ideal geometry (DNA, RNA) : Parkinson et al. (1996)  
Validation Pipeline (wwPDB-VP) : 2.35.1

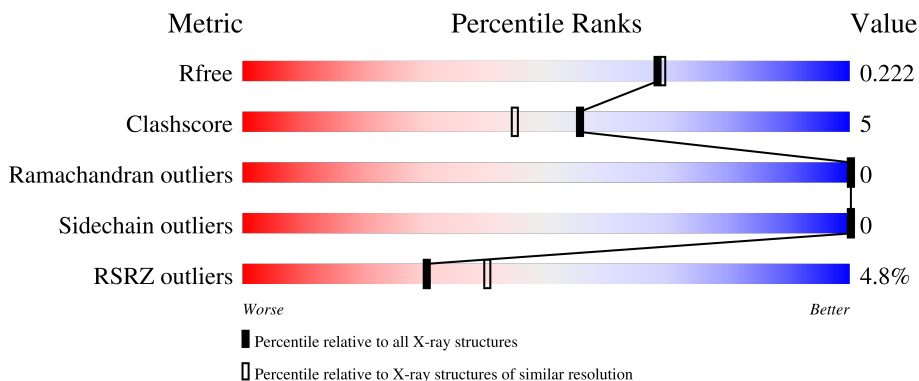
# 1 Overall quality at a glance

The following experimental techniques were used to determine the structure:

*X-RAY DIFFRACTION*


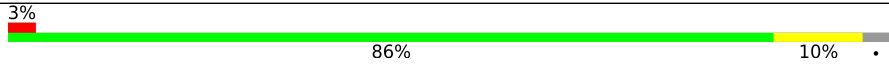
The reported resolution of this entry is 1.96 Å.

Percentile scores (ranging between 0-100) for global validation metrics of the entry are shown in the following graphic. The table shows the number of entries on which the scores are based.



Metric	Whole archive (#Entries)	Similar resolution (#Entries, resolution range(Å))
$R_{free}$	130704	2580 (1.96-1.96)
Clashscore	141614	2705 (1.96-1.96)
Ramachandran outliers	138981	2678 (1.96-1.96)
Sidechain outliers	138945	2678 (1.96-1.96)
RSRZ outliers	127900	2539 (1.96-1.96)

The table below summarises the geometric issues observed across the polymeric chains and their fit to the electron density. The red, orange, yellow and green segments of the lower bar indicate the fraction of residues that contain outliers for  $\geq 3$ , 2, 1 and 0 types of geometric quality criteria respectively. A grey segment represents the fraction of residues that are not modelled. The numeric value for each fraction is indicated below the corresponding segment, with a dot representing fractions  $\leq 5\%$ . The upper red bar (where present) indicates the fraction of residues that have poor fit to the electron density. The numeric value is given above the bar.

Mol	Chain	Length	Quality of chain
1	A	347	
1	B	347	

## 2 Entry composition i

There are 3 unique types of molecules in this entry. The entry contains 5680 atoms, of which 0 are hydrogens and 0 are deuteriums.

In the tables below, the ZeroOcc column contains the number of atoms modelled with zero occupancy, the AltConf column contains the number of residues with at least one atom in alternate conformation and the Trace column contains the number of residues modelled with at most 2 atoms.

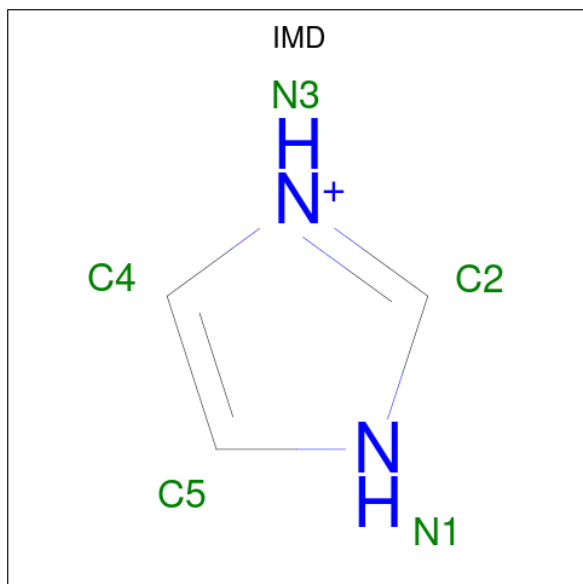
- Molecule 1 is a protein called cGMP-dependent protein kinase 1.

Mol	Chain	Residues	Atoms						ZeroOcc	AltConf	Trace
			Total	C	N	O	P	S			
1	A	335	Total	C	N	O	P	S	0	0	0
			2585	1668	424	482	1	10			
1	B	335	Total	C	N	O	P	S	0	0	0
			2616	1694	431	480	1	10			

There are 4 discrepancies between the modelled and reference sequences:

Chain	Residue	Modelled	Actual	Comment	Reference
A	325	GLY	-	expression tag	UNP Q13976
A	326	SER	-	expression tag	UNP Q13976
B	325	GLY	-	expression tag	UNP Q13976
B	326	SER	-	expression tag	UNP Q13976

- Molecule 2 is IMIDAZOLE (three-letter code: IMD) (formula: C<sub>3</sub>H<sub>5</sub>N<sub>2</sub>).



Mol	Chain	Residues	Atoms			ZeroOcc	AltConf
2	A	1	Total	C	N	0	0
			5	3	2		
2	B	1	Total	C	N	0	0
			5	3	2		

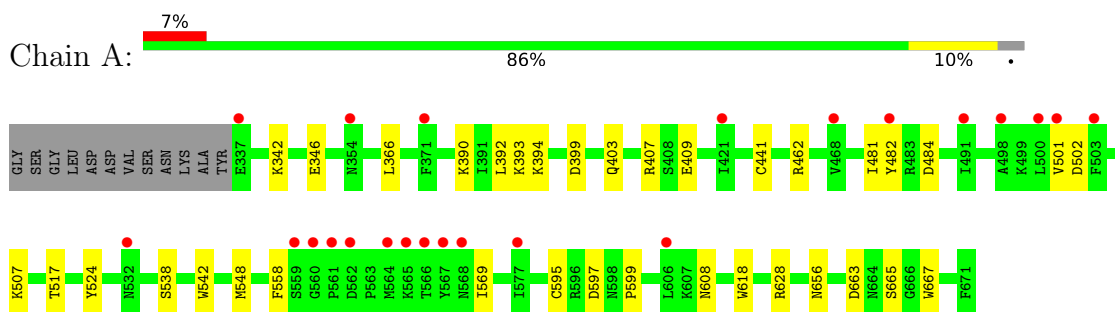
- Molecule 3 is water.

Mol	Chain	Residues	Atoms		ZeroOcc	AltConf
3	A	222	Total	O	0	0
			222	222		
3	B	246	Total	O	0	1
			247	247		

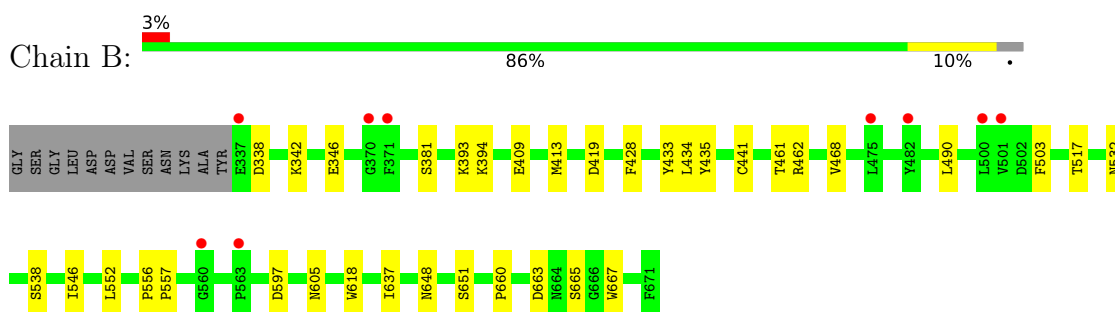
### 3 Residue-property plots [i](#)

These plots are drawn for all protein, RNA, DNA and oligosaccharide chains in the entry. The first graphic for a chain summarises the proportions of the various outlier classes displayed in the second graphic. The second graphic shows the sequence view annotated by issues in geometry and electron density. Residues are color-coded according to the number of geometric quality criteria for which they contain at least one outlier: green = 0, yellow = 1, orange = 2 and red = 3 or more. A red dot above a residue indicates a poor fit to the electron density ( $RSRZ > 2$ ). Stretches of 2 or more consecutive residues without any outlier are shown as a green connector. Residues present in the sample, but not in the model, are shown in grey.

- Molecule 1: cGMP-dependent protein kinase 1



- Molecule 1: cGMP-dependent protein kinase 1



## 4 Data and refinement statistics i

Property	Value	Source
Space group	P 1 2 1	Depositor
Cell constants a, b, c, $\alpha$ , $\beta$ , $\gamma$	85.11Å 50.88Å 85.53Å 90.00° 90.00° 90.00°	Depositor
Resolution (Å)	38.10 – 1.96 38.10 – 1.96	Depositor EDS
% Data completeness (in resolution range)	99.6 (38.10-1.96) 99.6 (38.10-1.96)	Depositor EDS
$R_{merge}$	0.08	Depositor
$R_{sym}$	(Not available)	Depositor
$\langle I/\sigma(I) \rangle$ <sup>1</sup>	1.89 (at 1.97Å)	Xtrriage
Refinement program	PHENIX (1.12_2829: ???)	Depositor
R, $R_{free}$	0.209 , 0.222 0.209 , 0.222	Depositor DCC
$R_{free}$ test set	2017 reflections (3.82%)	wwPDB-VP
Wilson B-factor (Å <sup>2</sup> )	30.1	Xtrriage
Anisotropy	0.357	Xtrriage
Bulk solvent $k_{sol}$ (e/Å <sup>3</sup> ), $B_{sol}$ (Å <sup>2</sup> )	0.31 , 39.8	EDS
L-test for twinning <sup>2</sup>	$\langle  L  \rangle = 0.48$ , $\langle L^2 \rangle = 0.32$	Xtrriage
Estimated twinning fraction	0.050 for l,k,-h 0.024 for h,-k,-l 0.023 for l,-k,h	Xtrriage
$F_o, F_c$ correlation	0.95	EDS
Total number of atoms	5680	wwPDB-VP
Average B, all atoms (Å <sup>2</sup> )	39.0	wwPDB-VP

Xtrriage's analysis on translational NCS is as follows: *The largest off-origin peak in the Patterson function is 5.45% of the height of the origin peak. No significant pseudotranslation is detected.*

<sup>1</sup>Intensities estimated from amplitudes.

<sup>2</sup>Theoretical values of  $\langle |L| \rangle$ ,  $\langle L^2 \rangle$  for acentric reflections are 0.5, 0.333 respectively for untwinned datasets, and 0.375, 0.2 for perfectly twinned datasets.

## 5 Model quality [i](#)

### 5.1 Standard geometry [i](#)

Bond lengths and bond angles in the following residue types are not validated in this section: TPO, IMD

The Z score for a bond length (or angle) is the number of standard deviations the observed value is removed from the expected value. A bond length (or angle) with  $|Z| > 5$  is considered an outlier worth inspection. RMSZ is the root-mean-square of all Z scores of the bond lengths (or angles).

Mol	Chain	Bond lengths		Bond angles	
		RMSZ	# Z  >5	RMSZ	# Z  >5
1	A	0.30	0/2637	0.48	0/3568
1	B	0.29	0/2670	0.46	0/3609
All	All	0.30	0/5307	0.47	0/7177

There are no bond length outliers.

There are no bond angle outliers.

There are no chirality outliers.

There are no planarity outliers.

### 5.2 Too-close contacts [i](#)

In the following table, the Non-H and H(model) columns list the number of non-hydrogen atoms and hydrogen atoms in the chain respectively. The H(added) column lists the number of hydrogen atoms added and optimized by MolProbity. The Clashes column lists the number of clashes within the asymmetric unit, whereas Symm-Clashes lists symmetry-related clashes.

Mol	Chain	Non-H	H(model)	H(added)	Clashes	Symm-Clashes
1	A	2585	0	2412	26	0
1	B	2616	0	2500	26	0
2	A	5	0	5	2	0
2	B	5	0	5	1	0
3	A	222	0	0	13	0
3	B	247	0	0	10	0
All	All	5680	0	4922	52	0

The all-atom clashscore is defined as the number of clashes found per 1000 atoms (including hydrogen atoms). The all-atom clashscore for this structure is 5.

All (52) close contacts within the same asymmetric unit are listed below, sorted by their clash

magnitude.

Atom-1	Atom-2	Interatomic distance (Å)	Clash overlap (Å)
1:A:597:ASP:OD2	3:A:801:HOH:O	1.89	0.89
1:A:393:LYS:NZ	3:A:802:HOH:O	1.91	0.89
1:B:338:ASP:OD1	3:B:801:HOH:O	1.90	0.89
1:A:409:GLU:OE2	3:A:803:HOH:O	1.97	0.82
1:B:651:SER:OG	3:B:802:HOH:O	1.99	0.81
1:B:433:TYR:OH	3:B:803:HOH:O	2.07	0.71
1:A:399:ASP:OD2	3:A:804:HOH:O	2.10	0.68
1:A:595:CYS:SG	3:A:1013:HOH:O	2.52	0.67
1:A:441:CYS:H	2:A:700:IMD:HN1	1.41	0.65
1:A:502:ASP:HA	3:A:803:HOH:O	2.00	0.61
1:A:628:ARG:NH1	3:A:809:HOH:O	2.22	0.59
1:A:542:TRP:NE1	3:A:805:HOH:O	2.12	0.59
1:B:648:ASN:OD1	3:B:805:HOH:O	2.16	0.59
1:A:342:LYS:O	1:A:346:GLU:HG2	2.05	0.57
1:A:462:ARG:HA	1:A:618:TRP:CH2	2.39	0.57
1:A:484:ASP:OD2	3:A:807:HOH:O	2.17	0.57
1:A:665:SER:HB2	1:A:667:TRP:HD1	1.70	0.56
1:A:524:TYR:O	3:A:808:HOH:O	2.18	0.56
1:B:538:SER:HB3	1:B:605:ASN:ND2	2.23	0.54
1:B:419:ASP:OD2	3:B:807:HOH:O	2.19	0.52
1:A:558:PHE:HD1	1:A:569:ILE:HG22	1.76	0.51
1:A:366:LEU:HD13	2:A:700:IMD:H2	1.92	0.51
1:B:441:CYS:H	2:B:700:IMD:HN1	1.57	0.51
1:B:538:SER:HB3	1:B:605:ASN:HD21	1.75	0.51
1:B:665:SER:HB2	1:B:667:TRP:HD1	1.76	0.50
1:B:462:ARG:HA	1:B:618:TRP:CH2	2.47	0.48
1:A:481:ILE:HG22	1:A:507:LYS:O	2.13	0.48
1:B:393:LYS:HG2	1:B:660:PRO:HG3	1.96	0.48
1:B:532:ASN:OD1	3:B:809:HOH:O	2.20	0.47
1:B:597:ASP:OD1	3:B:808:HOH:O	2.20	0.47
1:B:637:ILE:O	3:B:810:HOH:O	2.21	0.46
1:B:468:VAL:HG22	1:B:490:LEU:HD21	1.99	0.45
1:A:608:ASN:ND2	3:A:834:HOH:O	2.50	0.45
1:B:434:LEU:HD11	1:B:667:TRP:CH2	2.52	0.44
1:A:390:LYS:HG2	1:A:392:LEU:HD11	1.98	0.44
1:B:342:LYS:O	1:B:346:GLU:HG2	2.18	0.44
1:B:461:THR:HG21	1:B:552:LEU:HG	1.99	0.44
1:B:428:PHE:HB2	1:B:435:TYR:HB2	2.00	0.44
1:B:546:ILE:HG23	1:B:557:PRO:HD2	2.00	0.44
1:A:403:GLN:O	1:A:407:ARG:HG3	2.17	0.43
1:A:548:MET:HE2	1:A:618:TRP:CZ3	2.54	0.42

*Continued on next page...*



Continued from previous page...

Atom-1	Atom-2	Interatomic distance (Å)	Clash overlap (Å)
1:B:394:LYS:HE3	1:B:663:ASP:HB3	2.01	0.42
1:B:409:GLU:HG3	1:B:413:MET:HE3	2.02	0.42
1:A:628:ARG:HD2	3:A:809:HOH:O	2.20	0.42
1:A:394:LYS:HE2	1:A:663:ASP:HB3	2.00	0.42
1:A:656:ASN:ND2	3:A:838:HOH:O	2.53	0.42
1:B:556:PRO:HB2	3:B:840:HOH:O	2.19	0.42
1:A:482:TYR:OH	1:A:501:VAL:O	2.38	0.41
1:B:413:MET:HE2	1:B:503:PHE:CD1	2.56	0.41
1:B:394:LYS:HG2	1:B:434:LEU:HG	2.02	0.41
1:A:538:SER:OG	1:A:599:PRO:HB3	2.21	0.40
1:B:381:SER:OG	3:B:806:HOH:O	2.17	0.40

There are no symmetry-related clashes.

### 5.3 Torsion angles [i](#)

#### 5.3.1 Protein backbone [i](#)

In the following table, the Percentiles column shows the percent Ramachandran outliers of the chain as a percentile score with respect to all X-ray entries followed by that with respect to entries of similar resolution.

The Analysed column shows the number of residues for which the backbone conformation was analysed, and the total number of residues.

Mol	Chain	Analysed	Favoured	Allowed	Outliers	Percentiles	
1	A	332/347 (96%)	325 (98%)	7 (2%)	0	100	100
1	B	332/347 (96%)	325 (98%)	7 (2%)	0	100	100
All	All	664/694 (96%)	650 (98%)	14 (2%)	0	100	100

There are no Ramachandran outliers to report.

#### 5.3.2 Protein sidechains [i](#)

In the following table, the Percentiles column shows the percent sidechain outliers of the chain as a percentile score with respect to all X-ray entries followed by that with respect to entries of similar resolution.

The Analysed column shows the number of residues for which the sidechain conformation was analysed, and the total number of residues.

Mol	Chain	Analysed	Rotameric	Outliers	Percentiles	
1	A	247/297 (83%)	247 (100%)	0	100	100
1	B	255/297 (86%)	255 (100%)	0	100	100
All	All	502/594 (84%)	502 (100%)	0	100	100

There are no protein residues with a non-rotameric sidechain to report.

Sometimes sidechains can be flipped to improve hydrogen bonding and reduce clashes. All (1) such sidechains are listed below:

Mol	Chain	Res	Type
1	A	648	ASN

### 5.3.3 RNA [i](#)

There are no RNA molecules in this entry.

## 5.4 Non-standard residues in protein, DNA, RNA chains [i](#)

2 non-standard protein/DNA/RNA residues are modelled in this entry.

In the following table, the Counts columns list the number of bonds (or angles) for which Mogul statistics could be retrieved, the number of bonds (or angles) that are observed in the model and the number of bonds (or angles) that are defined in the Chemical Component Dictionary. The Link column lists molecule types, if any, to which the group is linked. The Z score for a bond length (or angle) is the number of standard deviations the observed value is removed from the expected value. A bond length (or angle) with  $|Z| > 2$  is considered an outlier worth inspection. RMSZ is the root-mean-square of all Z scores of the bond lengths (or angles).

Mol	Type	Chain	Res	Link	Bond lengths			Bond angles		
					Counts	RMSZ	$\# Z  > 2$	Counts	RMSZ	$\# Z  > 2$
1	TPO	B	517	1	8,10,11	1.60	1 (12%)	10,14,16	1.78	2 (20%)
1	TPO	A	517	1	8,10,11	1.53	1 (12%)	10,14,16	1.92	1 (10%)

In the following table, the Chirals column lists the number of chiral outliers, the number of chiral centers analysed, the number of these observed in the model and the number defined in the Chemical Component Dictionary. Similar counts are reported in the Torsion and Rings columns. '-' means no outliers of that kind were identified.

Mol	Type	Chain	Res	Link	Chirals	Torsions	Rings
1	TPO	B	517	1	-	1/9/11/13	-
1	TPO	A	517	1	-	0/9/11/13	-

All (2) bond length outliers are listed below:

Mol	Chain	Res	Type	Atoms	Z	Observed(Å)	Ideal(Å)
1	B	517	TPO	P-O1P	3.27	1.61	1.50
1	A	517	TPO	P-O1P	3.26	1.61	1.50

All (3) bond angle outliers are listed below:

Mol	Chain	Res	Type	Atoms	Z	Observed(°)	Ideal(°)
1	A	517	TPO	P-OG1-CB	-5.46	106.71	123.21
1	B	517	TPO	P-OG1-CB	-4.72	108.95	123.21
1	B	517	TPO	CG2-CB-CA	-2.15	108.92	113.16

There are no chirality outliers.

All (1) torsion outliers are listed below:

Mol	Chain	Res	Type	Atoms
1	B	517	TPO	CB-OG1-P-O3P

There are no ring outliers.

No monomer is involved in short contacts.

## 5.5 Carbohydrates [i](#)

There are no monosaccharides in this entry.

## 5.6 Ligand geometry [i](#)

2 ligands are modelled in this entry.

In the following table, the Counts columns list the number of bonds (or angles) for which Mogul statistics could be retrieved, the number of bonds (or angles) that are observed in the model and the number of bonds (or angles) that are defined in the Chemical Component Dictionary. The Link column lists molecule types, if any, to which the group is linked. The Z score for a bond length (or angle) is the number of standard deviations the observed value is removed from the expected value. A bond length (or angle) with  $|Z| > 2$  is considered an outlier worth inspection. RMSZ is the root-mean-square of all Z scores of the bond lengths (or angles).

Mol	Type	Chain	Res	Link	Bond lengths			Bond angles		
					Counts	RMSZ	$\# Z  > 2$	Counts	RMSZ	$\# Z  > 2$
2	IMD	A	700	-	3,5,5	0.41	0	4,5,5	0.54	0
2	IMD	B	700	-	3,5,5	0.41	0	4,5,5	0.61	0

In the following table, the Chirals column lists the number of chiral outliers, the number of chiral centers analysed, the number of these observed in the model and the number defined in the Chemical Component Dictionary. Similar counts are reported in the Torsion and Rings columns. '-' means no outliers of that kind were identified.

Mol	Type	Chain	Res	Link	Chirals	Torsions	Rings
2	IMD	A	700	-	-	-	0/1/1/1
2	IMD	B	700	-	-	-	0/1/1/1

There are no bond length outliers.

There are no bond angle outliers.

There are no chirality outliers.

There are no torsion outliers.

There are no ring outliers.

2 monomers are involved in 3 short contacts:

Mol	Chain	Res	Type	Clashes	Symm-Clashes
2	A	700	IMD	2	0
2	B	700	IMD	1	0

## 5.7 Other polymers [i](#)

There are no such residues in this entry.

## 5.8 Polymer linkage issues [i](#)

There are no chain breaks in this entry.

## 6 Fit of model and data

### 6.1 Protein, DNA and RNA chains

In the following table, the column labelled ‘#RSRZ > 2’ contains the number (and percentage) of RSRZ outliers, followed by percent RSRZ outliers for the chain as percentile scores relative to all X-ray entries and entries of similar resolution. The OWAB column contains the minimum, median, 95<sup>th</sup> percentile and maximum values of the occupancy-weighted average B-factor per residue. The column labelled ‘Q < 0.9’ lists the number of (and percentage) of residues with an average occupancy less than 0.9.

Mol	Chain	Analysed	<RSRZ>	#RSRZ>2	OWAB(Å <sup>2</sup> )	Q<0.9
1	A	334/347 (96%)	0.51	23 (6%) 16 25	24, 40, 62, 75	0
1	B	334/347 (96%)	0.29	9 (2%) 54 63	24, 36, 55, 67	0
All	All	668/694 (96%)	0.40	32 (4%) 30 40	24, 38, 59, 75	0

All (32) RSRZ outliers are listed below:

Mol	Chain	Res	Type	RSRZ
1	A	560	GLY	4.9
1	B	370	GLY	4.7
1	B	500	LEU	4.7
1	A	564	MET	4.1
1	A	561	PRO	3.8
1	A	568	ASN	3.6
1	A	567	TYR	3.5
1	A	337	GLU	3.5
1	A	371	PHE	3.4
1	A	501	VAL	3.4
1	B	501	VAL	3.2
1	A	577	ILE	2.9
1	A	565	LYS	2.8
1	A	498	ALA	2.7
1	A	500	LEU	2.6
1	A	559	SER	2.6
1	B	371	PHE	2.6
1	B	560	GLY	2.6
1	A	491	ILE	2.6
1	A	468	VAL	2.5
1	A	421	ILE	2.4
1	B	482	TYR	2.4
1	B	337	GLU	2.4
1	A	606	LEU	2.3

*Continued on next page...*

*Continued from previous page...*

Mol	Chain	Res	Type	RSRZ
1	A	562	ASP	2.2
1	A	532	ASN	2.2
1	A	503	PHE	2.2
1	A	482	TYR	2.1
1	A	354	ASN	2.1
1	A	566	THR	2.1
1	B	563	PRO	2.0
1	B	475	LEU	2.0

## 6.2 Non-standard residues in protein, DNA, RNA chains [i](#)

In the following table, the Atoms column lists the number of modelled atoms in the group and the number defined in the chemical component dictionary. The B-factors column lists the minimum, median, 95<sup>th</sup> percentile and maximum values of B factors of atoms in the group. The column labelled 'Q< 0.9' lists the number of atoms with occupancy less than 0.9.

Mol	Type	Chain	Res	Atoms	RSCC	RSR	B-factors(Å <sup>2</sup> )	Q<0.9
1	TPO	B	517	11/12	0.98	0.11	25,26,30,31	0
1	TPO	A	517	11/12	0.99	0.08	28,30,38,40	0

## 6.3 Carbohydrates [i](#)

There are no monosaccharides in this entry.

## 6.4 Ligands [i](#)

In the following table, the Atoms column lists the number of modelled atoms in the group and the number defined in the chemical component dictionary. The B-factors column lists the minimum, median, 95<sup>th</sup> percentile and maximum values of B factors of atoms in the group. The column labelled 'Q< 0.9' lists the number of atoms with occupancy less than 0.9.

Mol	Type	Chain	Res	Atoms	RSCC	RSR	B-factors(Å <sup>2</sup> )	Q<0.9
2	IMD	B	700	5/5	0.76	0.24	57,57,58,58	0
2	IMD	A	700	5/5	0.87	0.20	45,45,46,46	0

## 6.5 Other polymers [i](#)

There are no such residues in this entry.