



wwPDB X-ray Structure Validation Summary Report ⓘ

Nov 6, 2023 – 08:14 PM EST

PDB ID : 3BG3
Title : Crystal Structure of Human Pyruvate Carboxylase (missing the biotin carboxylase domain at the N-terminus)
Authors : Xiang, S.; Tong, L.
Deposited on : 2007-11-26
Resolution : 2.80 Å(reported)

This is a wwPDB X-ray Structure Validation Summary Report for a publicly released PDB entry.

We welcome your comments at validation@mail.wwpdb.org

A user guide is available at

<https://www.wwpdb.org/validation/2017/XrayValidationReportHelp>

with specific help available everywhere you see the ⓘ symbol.

The types of validation reports are described at

<http://www.wwpdb.org/validation/2017/FAQs#types>.

The following versions of software and data (see [references ⓘ](#)) were used in the production of this report:

MolProbity : 4.02b-467
Mogul : 1.8.5 (274361), CSD as541be (2020)
Xtriage (Phenix) : 1.13
EDS : 2.36
Percentile statistics : 20191225.v01 (using entries in the PDB archive December 25th 2019)
Refmac : 5.8.0158
CCP4 : 7.0.044 (Gargrove)
Ideal geometry (proteins) : Engh & Huber (2001)
Ideal geometry (DNA, RNA) : Parkinson et al. (1996)
Validation Pipeline (wwPDB-VP) : 2.36

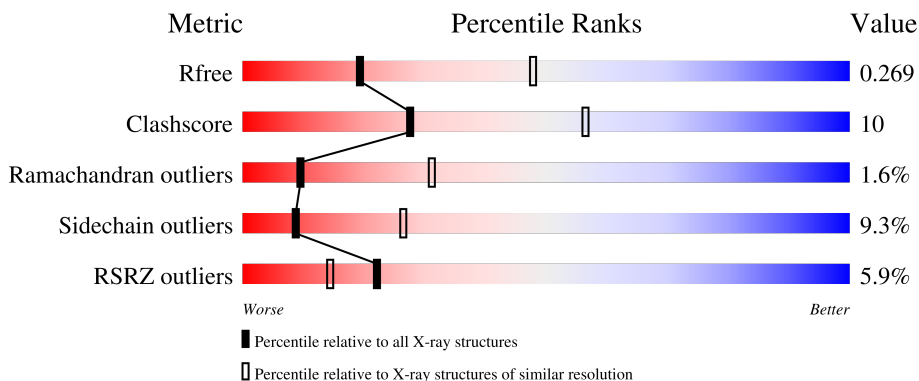
1 Overall quality at a glance i

The following experimental techniques were used to determine the structure:

X-RAY DIFFRACTION

The reported resolution of this entry is 2.80 Å.

Percentile scores (ranging between 0-100) for global validation metrics of the entry are shown in the following graphic. The table shows the number of entries on which the scores are based.



Metric	Whole archive (#Entries)	Similar resolution (#Entries, resolution range(Å))
R_{free}	130704	3140 (2.80-2.80)
Clashscore	141614	3569 (2.80-2.80)
Ramachandran outliers	138981	3498 (2.80-2.80)
Sidechain outliers	138945	3500 (2.80-2.80)
RSRZ outliers	127900	3078 (2.80-2.80)

The table below summarises the geometric issues observed across the polymeric chains and their fit to the electron density. The red, orange, yellow and green segments of the lower bar indicate the fraction of residues that contain outliers for ≥ 3 , 2, 1 and 0 types of geometric quality criteria respectively. A grey segment represents the fraction of residues that are not modelled. The numeric value for each fraction is indicated below the corresponding segment, with a dot representing fractions $\leq 5\%$. The upper red bar (where present) indicates the fraction of residues that have poor fit to the electron density. The numeric value is given above the bar.

Mol	Chain	Length	Quality of chain
1	A	718	
1	B	718	
1	C	718	
1	D	718	

The following table lists non-polymeric compounds, carbohydrate monomers and non-standard

residues in protein, DNA, RNA chains that are outliers for geometric or electron-density-fit criteria:

Mol	Type	Chain	Res	Chirality	Geometry	Clashes	Electron density
3	PYR	C	2000	-	X	-	-
3	PYR	D	2000	-	X	-	-

2 Entry composition i

There are 4 unique types of molecules in this entry. The entry contains 19813 atoms, of which 0 are hydrogens and 0 are deuteriums.

In the tables below, the ZeroOcc column contains the number of atoms modelled with zero occupancy, the AltConf column contains the number of residues with at least one atom in alternate conformation and the Trace column contains the number of residues modelled with at most 2 atoms.

- Molecule 1 is a protein called Pyruvate carboxylase, mitochondrial.

Mol	Chain	Residues	Atoms					ZeroOcc	AltConf	Trace
			Total	C	N	O	S			
1	A	680	5222	3314	895	978	35	0	0	0
1	B	604	4663	2960	802	872	29	0	0	0
1	C	604	4663	2960	802	872	29	0	0	0
1	D	680	5222	3314	895	978	35	0	0	0

There are 84 discrepancies between the modelled and reference sequences:

Chain	Residue	Modelled	Actual	Comment	Reference
A	461	MET	-	expression tag	UNP P11498
A	462	GLY	-	expression tag	UNP P11498
A	463	SER	-	expression tag	UNP P11498
A	464	SER	-	expression tag	UNP P11498
A	465	HIS	-	expression tag	UNP P11498
A	466	HIS	-	expression tag	UNP P11498
A	467	HIS	-	expression tag	UNP P11498
A	468	HIS	-	expression tag	UNP P11498
A	469	HIS	-	expression tag	UNP P11498
A	470	HIS	-	expression tag	UNP P11498
A	471	SER	-	expression tag	UNP P11498
A	472	SER	-	expression tag	UNP P11498
A	473	GLY	-	expression tag	UNP P11498
A	474	LEU	-	expression tag	UNP P11498
A	475	VAL	-	expression tag	UNP P11498
A	476	PRO	-	expression tag	UNP P11498
A	477	ARG	-	expression tag	UNP P11498
A	478	GLY	-	expression tag	UNP P11498
A	479	SER	-	expression tag	UNP P11498
A	480	HIS	-	expression tag	UNP P11498
A	481	MET	-	expression tag	UNP P11498

Continued on next page...

Continued from previous page...

Chain	Residue	Modelled	Actual	Comment	Reference
B	461	MET	-	expression tag	UNP P11498
B	462	GLY	-	expression tag	UNP P11498
B	463	SER	-	expression tag	UNP P11498
B	464	SER	-	expression tag	UNP P11498
B	465	HIS	-	expression tag	UNP P11498
B	466	HIS	-	expression tag	UNP P11498
B	467	HIS	-	expression tag	UNP P11498
B	468	HIS	-	expression tag	UNP P11498
B	469	HIS	-	expression tag	UNP P11498
B	470	HIS	-	expression tag	UNP P11498
B	471	SER	-	expression tag	UNP P11498
B	472	SER	-	expression tag	UNP P11498
B	473	GLY	-	expression tag	UNP P11498
B	474	LEU	-	expression tag	UNP P11498
B	475	VAL	-	expression tag	UNP P11498
B	476	PRO	-	expression tag	UNP P11498
B	477	ARG	-	expression tag	UNP P11498
B	478	GLY	-	expression tag	UNP P11498
B	479	SER	-	expression tag	UNP P11498
B	480	HIS	-	expression tag	UNP P11498
B	481	MET	-	expression tag	UNP P11498
C	461	MET	-	expression tag	UNP P11498
C	462	GLY	-	expression tag	UNP P11498
C	463	SER	-	expression tag	UNP P11498
C	464	SER	-	expression tag	UNP P11498
C	465	HIS	-	expression tag	UNP P11498
C	466	HIS	-	expression tag	UNP P11498
C	467	HIS	-	expression tag	UNP P11498
C	468	HIS	-	expression tag	UNP P11498
C	469	HIS	-	expression tag	UNP P11498
C	470	HIS	-	expression tag	UNP P11498
C	471	SER	-	expression tag	UNP P11498
C	472	SER	-	expression tag	UNP P11498
C	473	GLY	-	expression tag	UNP P11498
C	474	LEU	-	expression tag	UNP P11498
C	475	VAL	-	expression tag	UNP P11498
C	476	PRO	-	expression tag	UNP P11498
C	477	ARG	-	expression tag	UNP P11498
C	478	GLY	-	expression tag	UNP P11498
C	479	SER	-	expression tag	UNP P11498
C	480	HIS	-	expression tag	UNP P11498
C	481	MET	-	expression tag	UNP P11498

Continued on next page...

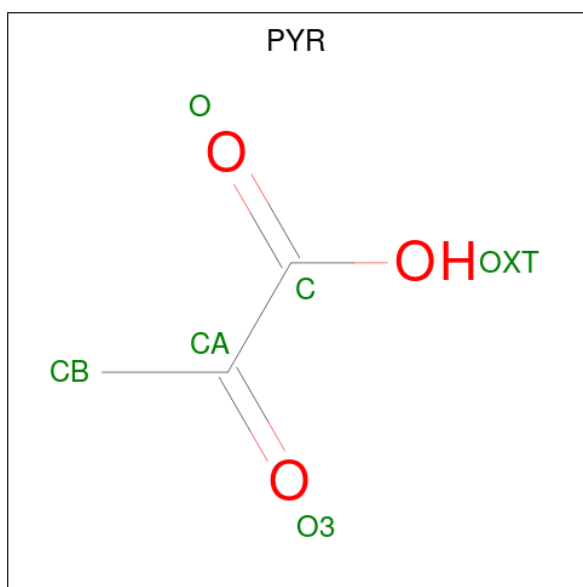
Continued from previous page...

Chain	Residue	Modelled	Actual	Comment	Reference
D	461	MET	-	expression tag	UNP P11498
D	462	GLY	-	expression tag	UNP P11498
D	463	SER	-	expression tag	UNP P11498
D	464	SER	-	expression tag	UNP P11498
D	465	HIS	-	expression tag	UNP P11498
D	466	HIS	-	expression tag	UNP P11498
D	467	HIS	-	expression tag	UNP P11498
D	468	HIS	-	expression tag	UNP P11498
D	469	HIS	-	expression tag	UNP P11498
D	470	HIS	-	expression tag	UNP P11498
D	471	SER	-	expression tag	UNP P11498
D	472	SER	-	expression tag	UNP P11498
D	473	GLY	-	expression tag	UNP P11498
D	474	LEU	-	expression tag	UNP P11498
D	475	VAL	-	expression tag	UNP P11498
D	476	PRO	-	expression tag	UNP P11498
D	477	ARG	-	expression tag	UNP P11498
D	478	GLY	-	expression tag	UNP P11498
D	479	SER	-	expression tag	UNP P11498
D	480	HIS	-	expression tag	UNP P11498
D	481	MET	-	expression tag	UNP P11498

- Molecule 2 is MANGANESE (II) ION (three-letter code: MN) (formula: Mn).

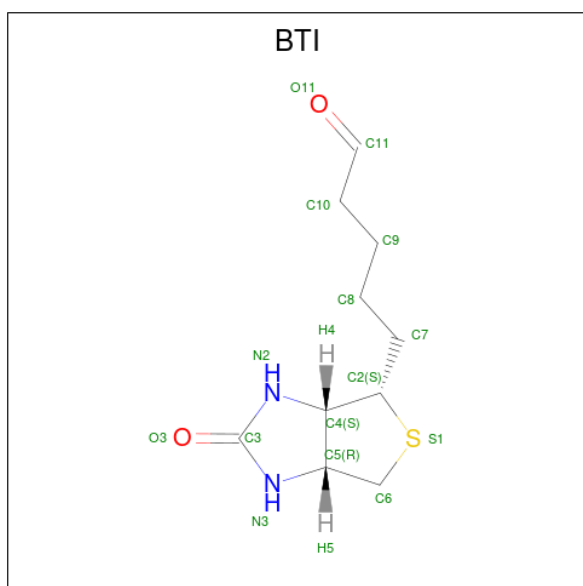
Mol	Chain	Residues	Atoms	ZeroOcc	AltConf
2	A	1	Total Mn 1 1	0	0
2	B	1	Total Mn 1 1	0	0
2	C	1	Total Mn 1 1	0	0
2	D	1	Total Mn 1 1	0	0

- Molecule 3 is PYRUVIC ACID (three-letter code: PYR) (formula: C₃H₄O₃).



Mol	Chain	Residues	Atoms			ZeroOcc	AltConf
3	A	1	Total	C	O	0	0
			6	3	3		
3	B	1	Total	C	O	0	0
			6	3	3		
3	C	1	Total	C	O	0	0
			6	3	3		
3	D	1	Total	C	O	0	0
			6	3	3		

- Molecule 4 is 5-(HEXAHYDRO-2-OXO-1H-THIENO[3,4-D]IMIDAZOL-6-YL)PENTANAL (three-letter code: BTI) (formula: C₁₀H₁₆N₂O₂S).

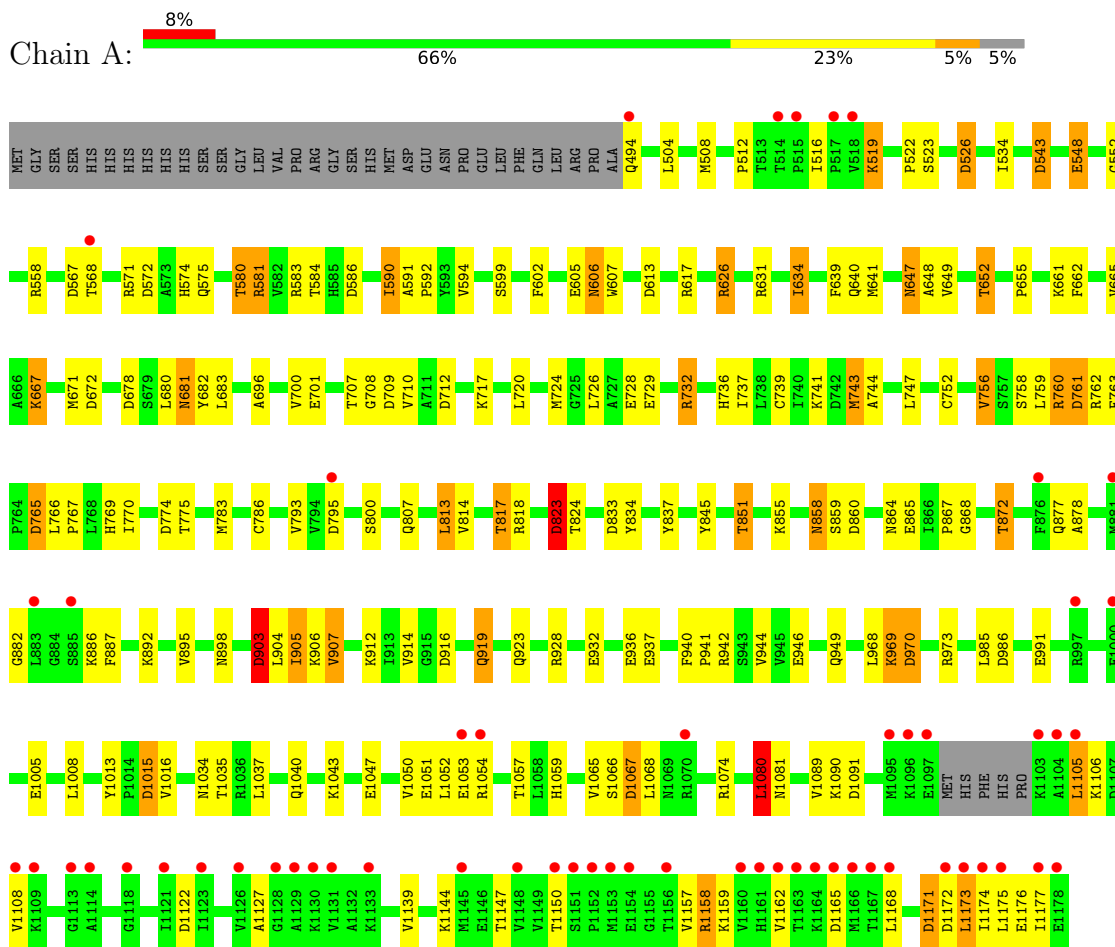


Mol	Chain	Residues	Atoms					ZeroOcc	AltConf
			Total	C	N	O	S		
4	A	1	15	10	2	2	1	0	0

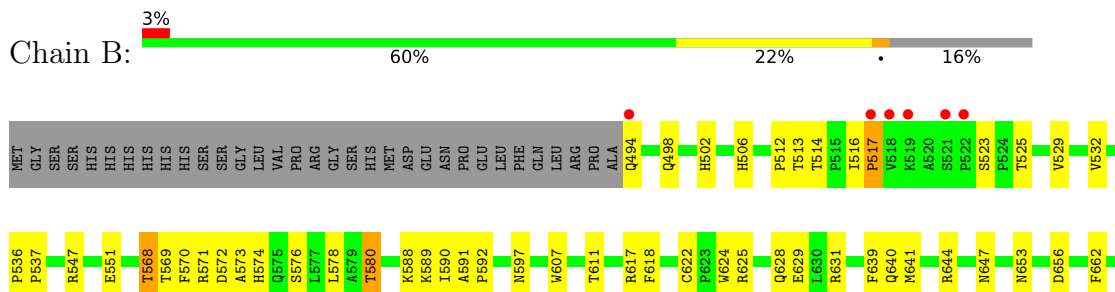
3 Residue-property plots [i](#)

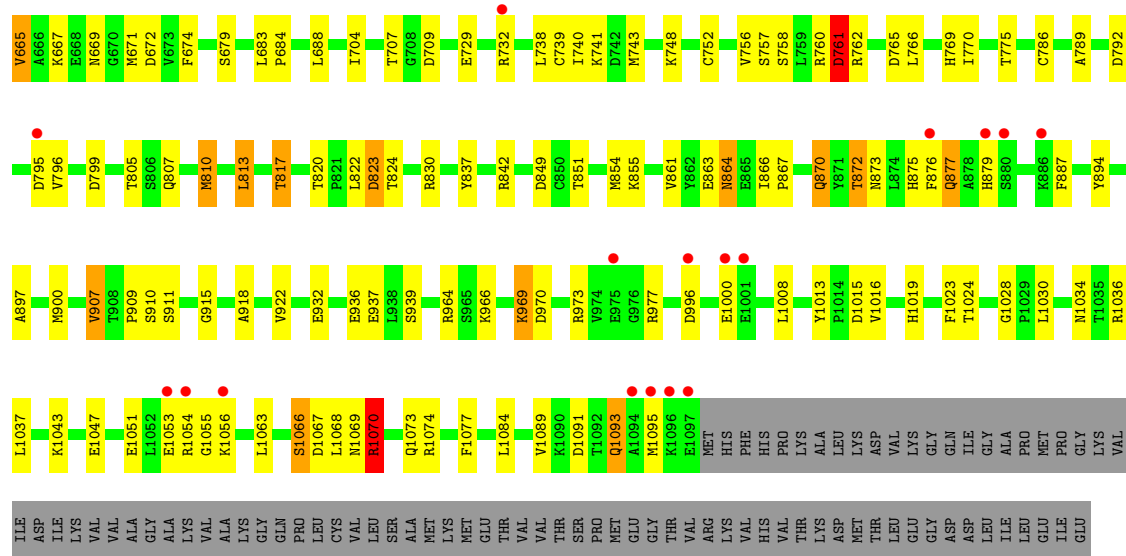
These plots are drawn for all protein, RNA, DNA and oligosaccharide chains in the entry. The first graphic for a chain summarises the proportions of the various outlier classes displayed in the second graphic. The second graphic shows the sequence view annotated by issues in geometry and electron density. Residues are color-coded according to the number of geometric quality criteria for which they contain at least one outlier: green = 0, yellow = 1, orange = 2 and red = 3 or more. A red dot above a residue indicates a poor fit to the electron density ($RSRZ > 2$). Stretches of 2 or more consecutive residues without any outlier are shown as a green connector. Residues present in the sample, but not in the model, are shown in grey.

- Molecule 1: Pyruvate carboxylase, mitochondrial

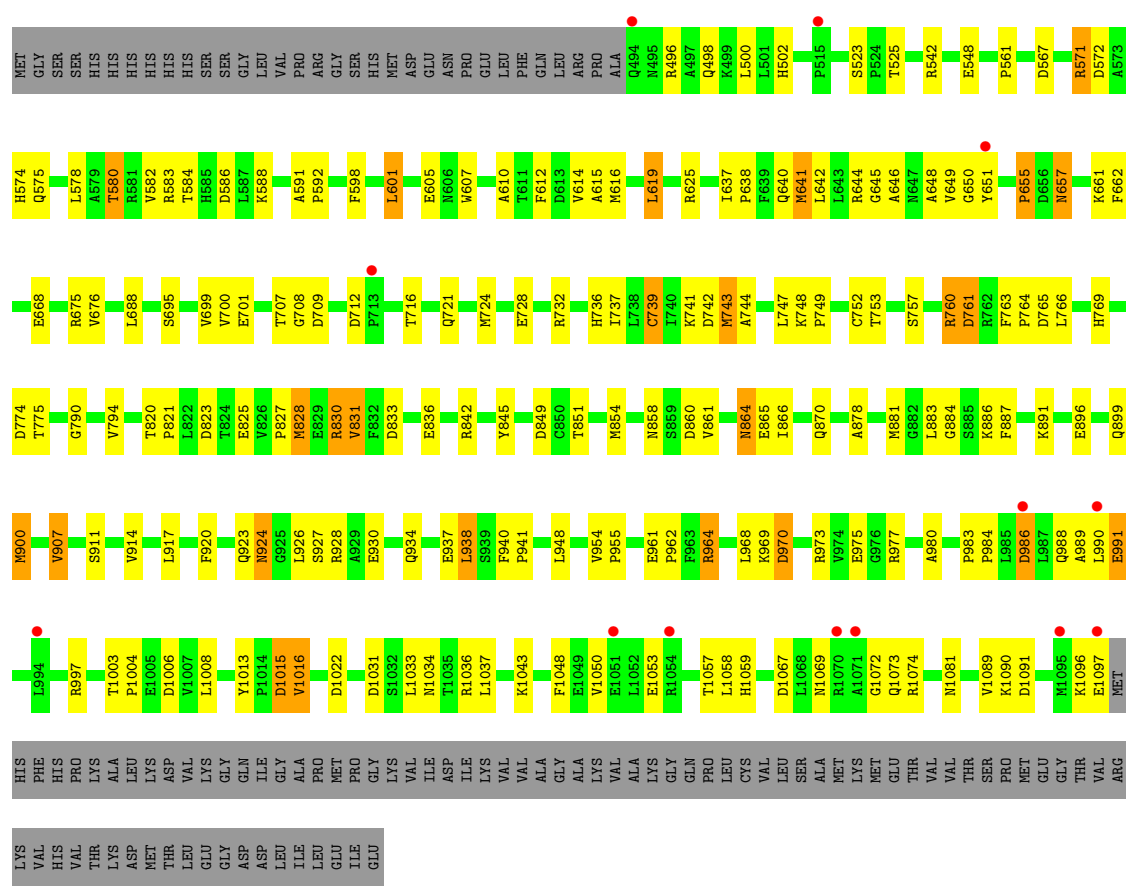


- Molecule 1: Pyruvate carboxylase, mitochondrial



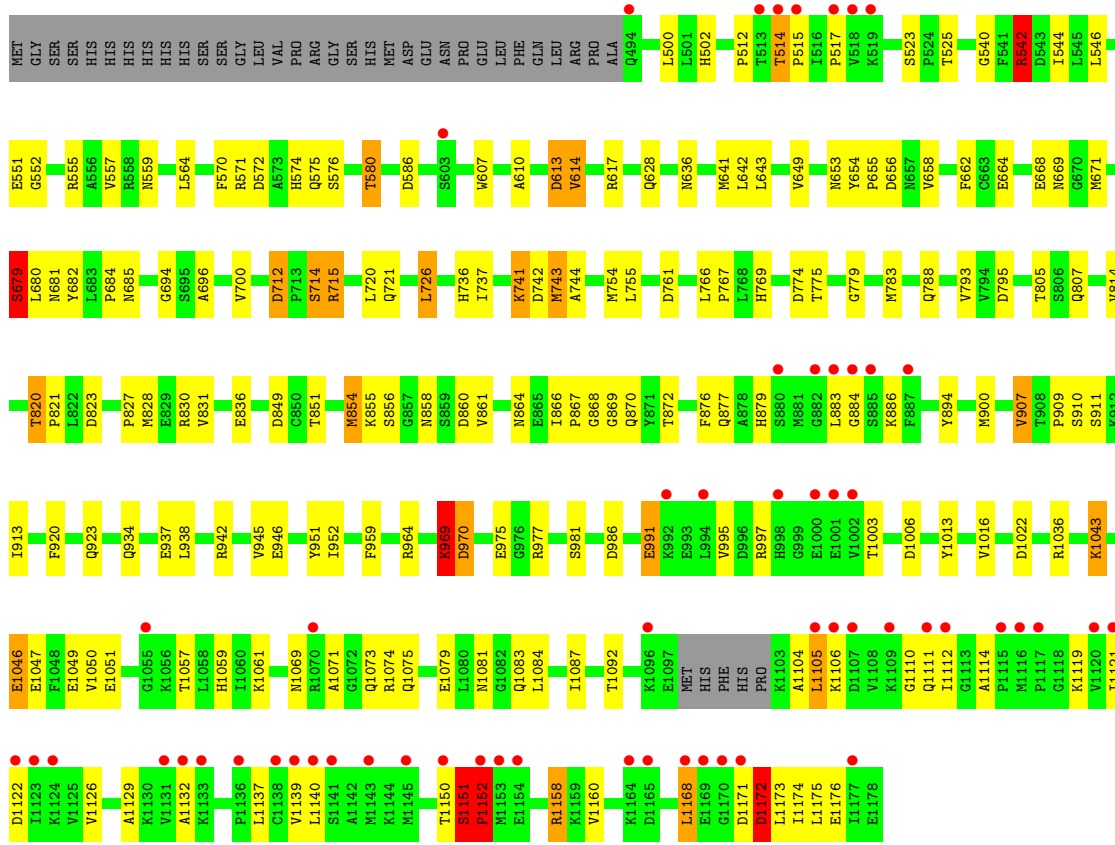


● Molecule 1: Pyruvate carboxylase, mitochondrial



● Molecule 1: Pyruvate carboxylase, mitochondrial





4 Data and refinement statistics

Property	Value	Source
Space group	P 1 21 1	Depositor
Cell constants a, b, c, α , β , γ	81.27Å 173.32Å 118.19Å 90.00° 95.87° 90.00°	Depositor
Resolution (Å)	30.00 – 2.80 29.87 – 2.77	Depositor EDS
% Data completeness (in resolution range)	94.7 (30.00-2.80) 92.4 (29.87-2.77)	Depositor EDS
R_{merge}	0.07	Depositor
R_{sym}	(Not available)	Depositor
$\langle I/\sigma(I) \rangle$ ¹	2.06 (at 2.76Å)	Xtrriage
Refinement program	REFMAC 5.2.0003	Depositor
R, R_{free}	0.216 , 0.271 0.216 , 0.269	Depositor DCC
R_{free} test set	3954 reflections (5.17%)	wwPDB-VP
Wilson B-factor (Å ²)	69.3	Xtrriage
Anisotropy	0.375	Xtrriage
Bulk solvent k_{sol} (e/Å ³), B_{sol} (Å ²)	0.28 , 44.4	EDS
L-test for twinning ²	$\langle L \rangle = 0.50$, $\langle L^2 \rangle = 0.33$	Xtrriage
Estimated twinning fraction	No twinning to report.	Xtrriage
F_o, F_c correlation	0.94	EDS
Total number of atoms	19813	wwPDB-VP
Average B, all atoms (Å ²)	94.0	wwPDB-VP

Xtrriage's analysis on translational NCS is as follows: *The largest off-origin peak in the Patterson function is 2.85% of the height of the origin peak. No significant pseudotranslation is detected.*

¹Intensities estimated from amplitudes.

²Theoretical values of $\langle |L| \rangle$, $\langle L^2 \rangle$ for acentric reflections are 0.5, 0.333 respectively for untwinned datasets, and 0.375, 0.2 for perfectly twinned datasets.

5 Model quality [i](#)

5.1 Standard geometry [i](#)

Bond lengths and bond angles in the following residue types are not validated in this section: MN, KCX, PYR, BTI

The Z score for a bond length (or angle) is the number of standard deviations the observed value is removed from the expected value. A bond length (or angle) with $|Z| > 5$ is considered an outlier worth inspection. RMSZ is the root-mean-square of all Z scores of the bond lengths (or angles).

Mol	Chain	Bond lengths		Bond angles	
		RMSZ	# Z >5	RMSZ	# Z >5
1	A	0.51	6/5322 (0.1%)	0.77	22/7211 (0.3%)
1	B	0.59	5/4759 (0.1%)	0.76	14/6456 (0.2%)
1	C	0.50	1/4759 (0.0%)	0.75	17/6456 (0.3%)
1	D	0.57	6/5322 (0.1%)	0.78	16/7211 (0.2%)
All	All	0.54	18/20162 (0.1%)	0.76	69/27334 (0.3%)

The worst 5 of 18 bond length outliers are listed below:

Mol	Chain	Res	Type	Atoms	Z	Observed(Å)	Ideal(Å)
1	B	1066	SER	CB-OG	17.43	1.65	1.42
1	B	973	ARG	CZ-NH1	11.80	1.48	1.33
1	D	991	GLU	CD-OE2	11.34	1.38	1.25
1	A	937	GLU	CD-OE2	8.89	1.35	1.25
1	D	664	GLU	CD-OE2	8.78	1.35	1.25

The worst 5 of 69 bond angle outliers are listed below:

Mol	Chain	Res	Type	Atoms	Z	Observed(°)	Ideal(°)
1	A	973	ARG	NE-CZ-NH2	-8.46	116.07	120.30
1	B	973	ARG	NE-CZ-NH2	-8.13	116.23	120.30
1	D	613	ASP	CB-CG-OD2	7.90	125.41	118.30
1	D	860	ASP	CB-CG-OD2	7.80	125.32	118.30
1	D	774	ASP	CB-CG-OD2	7.69	125.22	118.30

There are no chirality outliers.

There are no planarity outliers.

5.2 Too-close contacts [i](#)

In the following table, the Non-H and H(model) columns list the number of non-hydrogen atoms and hydrogen atoms in the chain respectively. The H(added) column lists the number of hydrogen atoms added and optimized by MolProbity. The Clashes column lists the number of clashes within the asymmetric unit, whereas Symm-Clashes lists symmetry-related clashes.

Mol	Chain	Non-H	H(model)	H(added)	Clashes	Symm-Clashes
1	A	5222	0	5215	105	0
1	B	4663	0	4608	101	0
1	C	4663	0	4608	95	0
1	D	5222	0	5217	101	0
2	A	1	0	0	0	0
2	B	1	0	0	0	0
2	C	1	0	0	0	0
2	D	1	0	0	0	0
3	A	6	0	0	0	0
3	B	6	0	0	0	0
3	C	6	0	0	0	0
3	D	6	0	0	0	0
4	A	15	0	15	0	0
All	All	19813	0	19663	394	0

The all-atom clashscore is defined as the number of clashes found per 1000 atoms (including hydrogen atoms). The all-atom clashscore for this structure is 10.

The worst 5 of 394 close contacts within the same asymmetric unit are listed below, sorted by their clash magnitude.

Atom-1	Atom-2	Interatomic distance (Å)	Clash overlap (Å)
1:B:1066:SER:OG	1:B:1066:SER:CB	1.64	1.45
1:C:870:GLN:HE22	1:C:911:SER:HB2	1.17	1.07
1:B:568:THR:HG21	1:B:807:GLN:NE2	1.82	0.94
1:A:851:THR:HG21	1:D:855:LYS:HD2	1.47	0.94
1:C:870:GLN:NE2	1:C:911:SER:HB2	1.90	0.86

There are no symmetry-related clashes.

5.3 Torsion angles [i](#)

5.3.1 Protein backbone [i](#)

In the following table, the Percentiles column shows the percent Ramachandran outliers of the chain as a percentile score with respect to all X-ray entries followed by that with respect to entries

of similar resolution.

The Analysed column shows the number of residues for which the backbone conformation was analysed, and the total number of residues.

Mol	Chain	Analysed	Favoured	Allowed	Outliers	Percentiles	
1	A	675/718 (94%)	612 (91%)	50 (7%)	13 (2%)	8	26
1	B	601/718 (84%)	542 (90%)	54 (9%)	5 (1%)	19	49
1	C	601/718 (84%)	543 (90%)	47 (8%)	11 (2%)	8	28
1	D	675/718 (94%)	603 (89%)	59 (9%)	13 (2%)	8	26
All	All	2552/2872 (89%)	2300 (90%)	210 (8%)	42 (2%)	9	31

5 of 42 Ramachandran outliers are listed below:

Mol	Chain	Res	Type
1	A	1165	ASP
1	B	1055	GLY
1	C	496	ARG
1	D	1110	GLY
1	D	1152	PRO

5.3.2 Protein sidechains [i](#)

In the following table, the Percentiles column shows the percent sidechain outliers of the chain as a percentile score with respect to all X-ray entries followed by that with respect to entries of similar resolution.

The Analysed column shows the number of residues for which the sidechain conformation was analysed, and the total number of residues.

Mol	Chain	Analysed	Rotameric	Outliers	Percentiles	
1	A	559/593 (94%)	495 (89%)	64 (11%)	5	18
1	B	496/593 (84%)	454 (92%)	42 (8%)	10	31
1	C	496/593 (84%)	447 (90%)	49 (10%)	8	23
1	D	559/593 (94%)	517 (92%)	42 (8%)	13	37
All	All	2110/2372 (89%)	1913 (91%)	197 (9%)	9	26

5 of 197 residues with a non-rotameric sidechain are listed below:

Mol	Chain	Res	Type
1	C	619	LEU
1	C	973	ARG

Continued on next page...

Continued from previous page...

Mol	Chain	Res	Type
1	C	651	TYR
1	C	825	GLU
1	C	1034	ASN

Sometimes sidechains can be flipped to improve hydrogen bonding and reduce clashes. 5 of 67 such sidechains are listed below:

Mol	Chain	Res	Type
1	D	736	HIS
1	D	864	ASN
1	D	1081	ASN
1	B	807	GLN
1	B	769	HIS

5.3.3 RNA [i](#)

There are no RNA molecules in this entry.

5.4 Non-standard residues in protein, DNA, RNA chains [i](#)

4 non-standard protein/DNA/RNA residues are modelled in this entry.

In the following table, the Counts columns list the number of bonds (or angles) for which Mogul statistics could be retrieved, the number of bonds (or angles) that are observed in the model and the number of bonds (or angles) that are defined in the Chemical Component Dictionary. The Link column lists molecule types, if any, to which the group is linked. The Z score for a bond length (or angle) is the number of standard deviations the observed value is removed from the expected value. A bond length (or angle) with $|Z| > 2$ is considered an outlier worth inspection. RMSZ is the root-mean-square of all Z scores of the bond lengths (or angles).

Mol	Type	Chain	Res	Link	Bond lengths			Bond angles		
					Counts	RMSZ	# Z > 2	Counts	RMSZ	# Z > 2
1	KCX	C	741	2	9,11,12	0.89	0	5,12,14	2.17	1 (20%)
1	KCX	A	741	2	9,11,12	1.11	2 (22%)	5,12,14	1.31	1 (20%)
1	KCX	D	741	2	9,11,12	0.69	0	5,12,14	2.62	2 (40%)
1	KCX	B	741	2	9,11,12	0.94	0	5,12,14	1.46	1 (20%)

In the following table, the Chirals column lists the number of chiral outliers, the number of chiral centers analysed, the number of these observed in the model and the number defined in the Chemical Component Dictionary. Similar counts are reported in the Torsion and Rings columns. '2' means no outliers of that kind were identified.

Mol	Type	Chain	Res	Link	Chirals	Torsions	Rings
1	KCX	C	741	2	-	0/9/10/12	-
1	KCX	A	741	2	-	1/9/10/12	-
1	KCX	D	741	2	-	0/9/10/12	-
1	KCX	B	741	2	-	1/9/10/12	-

All (2) bond length outliers are listed below:

Mol	Chain	Res	Type	Atoms	Z	Observed(Å)	Ideal(Å)
1	A	741	KCX	OQ1-CX	2.07	1.25	1.21
1	A	741	KCX	CE-NZ	2.01	1.50	1.46

All (5) bond angle outliers are listed below:

Mol	Chain	Res	Type	Atoms	Z	Observed(°)	Ideal(°)
1	D	741	KCX	OQ1-CX-NZ	-5.31	116.73	124.96
1	C	741	KCX	OQ1-CX-NZ	-4.62	117.80	124.96
1	B	741	KCX	OQ1-CX-NZ	-2.93	120.42	124.96
1	A	741	KCX	OQ1-CX-NZ	-2.75	120.69	124.96
1	D	741	KCX	CE-NZ-CX	2.13	125.30	121.89

There are no chirality outliers.

All (2) torsion outliers are listed below:

Mol	Chain	Res	Type	Atoms
1	A	741	KCX	O-C-CA-CB
1	B	741	KCX	O-C-CA-CB

There are no ring outliers.

1 monomer is involved in 1 short contact:

Mol	Chain	Res	Type	Clashes	Symm-Clashes
1	D	741	KCX	1	0

5.5 Carbohydrates [i](#)

There are no monosaccharides in this entry.

5.6 Ligand geometry [i](#)

Of 9 ligands modelled in this entry, 4 are monoatomic - leaving 5 for Mogul analysis.

In the following table, the Counts columns list the number of bonds (or angles) for which Mogul statistics could be retrieved, the number of bonds (or angles) that are observed in the model and the number of bonds (or angles) that are defined in the Chemical Component Dictionary. The Link column lists molecule types, if any, to which the group is linked. The Z score for a bond length (or angle) is the number of standard deviations the observed value is removed from the expected value. A bond length (or angle) with $|Z| > 2$ is considered an outlier worth inspection. RMSZ is the root-mean-square of all Z scores of the bond lengths (or angles).

Mol	Type	Chain	Res	Link	Bond lengths			Bond angles		
					Counts	RMSZ	# $ Z > 2$	Counts	RMSZ	# $ Z > 2$
3	PYR	B	2000	-	5,5,5	2.87	3 (60%)	3,6,6	2.25	2 (66%)
3	PYR	C	2000	-	5,5,5	2.89	3 (60%)	3,6,6	2.05	2 (66%)
4	BTI	A	2100	1	16,16,16	1.64	2 (12%)	21,21,21	2.18	3 (14%)
3	PYR	A	2000	-	5,5,5	2.93	3 (60%)	3,6,6	1.76	2 (66%)
3	PYR	D	2000	-	5,5,5	3.02	3 (60%)	3,6,6	1.87	1 (33%)

In the following table, the Chirals column lists the number of chiral outliers, the number of chiral centers analysed, the number of these observed in the model and the number defined in the Chemical Component Dictionary. Similar counts are reported in the Torsion and Rings columns. '-' means no outliers of that kind were identified.

Mol	Type	Chain	Res	Link	Chirals	Torsions	Rings
3	PYR	B	2000	-	-	0/4/4/4	-
3	PYR	C	2000	-	-	2/4/4/4	-
4	BTI	A	2100	1	-	2/5/27/27	0/2/2/2
3	PYR	A	2000	-	-	0/4/4/4	-
3	PYR	D	2000	-	-	2/4/4/4	-

The worst 5 of 14 bond length outliers are listed below:

Mol	Chain	Res	Type	Atoms	Z	Observed(Å)	Ideal(Å)
4	A	2100	BTI	O3-C3	4.69	1.33	1.23
3	D	2000	PYR	O3-CA	4.35	1.32	1.23
3	A	2000	PYR	CA-C	-4.10	1.39	1.54
3	D	2000	PYR	CA-C	-4.07	1.39	1.54
3	B	2000	PYR	O3-CA	4.04	1.32	1.23

The worst 5 of 10 bond angle outliers are listed below:

Mol	Chain	Res	Type	Atoms	Z	Observed(°)	Ideal(°)
4	A	2100	BTI	C6-C5-N3	-6.66	104.57	113.03
4	A	2100	BTI	C2-C4-N2	-5.87	107.87	113.13
3	B	2000	PYR	OXT-C-O	-2.84	117.10	123.61

Continued on next page...

Continued from previous page...

Mol	Chain	Res	Type	Atoms	Z	Observed(°)	Ideal(°)
3	D	2000	PYR	OXT-C-CA	2.59	121.05	113.97
3	C	2000	PYR	OXT-C-CA	2.57	121.00	113.97

There are no chirality outliers.

5 of 6 torsion outliers are listed below:

Mol	Chain	Res	Type	Atoms
3	C	2000	PYR	O-C-CA-CB
3	C	2000	PYR	OXT-C-CA-CB
3	D	2000	PYR	OXT-C-CA-CB
4	A	2100	BTI	C11-C10-C9-C8
4	A	2100	BTI	C2-C7-C8-C9

There are no ring outliers.

No monomer is involved in short contacts.

5.7 Other polymers [i](#)

There are no such residues in this entry.

5.8 Polymer linkage issues [i](#)

There are no chain breaks in this entry.

6 Fit of model and data [i](#)

6.1 Protein, DNA and RNA chains [i](#)

In the following table, the column labelled ‘#RSRZ > 2’ contains the number (and percentage) of RSRZ outliers, followed by percent RSRZ outliers for the chain as percentile scores relative to all X-ray entries and entries of similar resolution. The OWAB column contains the minimum, median, 95th percentile and maximum values of the occupancy-weighted average B-factor per residue. The column labelled ‘Q < 0.9’ lists the number of (and percentage) of residues with an average occupancy less than 0.9.

Mol	Chain	Analysed	<RSRZ>	#RSRZ>2	OWAB(Å ²)	Q<0.9
1	A	679/718 (94%)	0.18	58 (8%) 10 5	49, 89, 174, 254	0
1	B	603/718 (83%)	0.01	23 (3%) 40 30	55, 89, 135, 163	0
1	C	603/718 (83%)	-0.09	13 (2%) 62 52	57, 91, 140, 165	0
1	D	679/718 (94%)	0.15	58 (8%) 10 5	51, 87, 159, 257	0
All	All	2564/2872 (89%)	0.07	152 (5%) 22 14	49, 89, 151, 257	0

The worst 5 of 152 RSRZ outliers are listed below:

Mol	Chain	Res	Type	RSRZ
1	A	1173	LEU	7.0
1	A	1133	LYS	6.6
1	A	1129	ALA	6.4
1	A	1165	ASP	6.1
1	D	1140	LEU	6.1

6.2 Non-standard residues in protein, DNA, RNA chains [i](#)

In the following table, the Atoms column lists the number of modelled atoms in the group and the number defined in the chemical component dictionary. The B-factors column lists the minimum, median, 95th percentile and maximum values of B factors of atoms in the group. The column labelled ‘Q < 0.9’ lists the number of atoms with occupancy less than 0.9.

Mol	Type	Chain	Res	Atoms	RSCC	RSR	B-factors(Å ²)	Q<0.9
1	KCX	A	741	12/13	0.97	0.23	66,69,70,70	0
1	KCX	B	741	12/13	0.98	0.23	64,66,68,68	0
1	KCX	C	741	12/13	0.98	0.24	70,72,74,75	0
1	KCX	D	741	12/13	0.98	0.23	54,60,63,64	0

6.3 Carbohydrates [i](#)

There are no monosaccharides in this entry.

6.4 Ligands [i](#)

In the following table, the Atoms column lists the number of modelled atoms in the group and the number defined in the chemical component dictionary. The B-factors column lists the minimum, median, 95th percentile and maximum values of B factors of atoms in the group. The column labelled 'Q< 0.9' lists the number of atoms with occupancy less than 0.9.

Mol	Type	Chain	Res	Atoms	RSCC	RSR	B-factors(\AA^2)	Q<0.9
3	PYR	C	2000	6/6	0.78	0.40	88,89,91,91	0
3	PYR	B	2000	6/6	0.91	0.28	72,74,74,74	0
3	PYR	D	2000	6/6	0.92	0.23	76,77,77,79	0
3	PYR	A	2000	6/6	0.93	0.21	75,76,77,79	0
2	MN	A	2001	1/1	0.95	0.22	72,72,72,72	0
2	MN	D	2001	1/1	0.95	0.21	68,68,68,68	0
2	MN	B	2001	1/1	0.96	0.23	68,68,68,68	0
4	BTI	A	2100	15/15	0.96	0.13	89,92,93,94	0
2	MN	C	2001	1/1	0.98	0.21	77,77,77,77	0

6.5 Other polymers [i](#)

There are no such residues in this entry.