



Full wwPDB X-ray Structure Validation Report ⓘ

Dec 20, 2023 – 12:08 PM EST

PDB ID : 6BGE
Title : HELICOBACTER PYLORI ATPASE, HP0525, IN COMPLEX WITH 1G2
COMPOUND
Authors : Arya, T.; Casu, B.; Baron, C.
Deposited on : 2017-10-27
Resolution : 2.90 Å(reported)

This is a Full wwPDB X-ray Structure Validation Report for a publicly released PDB entry.

We welcome your comments at validation@mail.wwpdb.org

A user guide is available at

<https://www.wwpdb.org/validation/2017/XrayValidationReportHelp>

with specific help available everywhere you see the ⓘ symbol.

The types of validation reports are described at

<http://www.wwpdb.org/validation/2017/FAQs#types>.

The following versions of software and data (see [references ⓘ](#)) were used in the production of this report:

MolProbity : 4.02b-467
Mogul : 1.8.5 (274361), CSD as541be (2020)
Xtriage (Phenix) : 1.13
EDS : 2.36
Percentile statistics : 20191225.v01 (using entries in the PDB archive December 25th 2019)
Refmac : 5.8.0158
CCP4 : 7.0.044 (Gargrove)
Ideal geometry (proteins) : Engh & Huber (2001)
Ideal geometry (DNA, RNA) : Parkinson et al. (1996)
Validation Pipeline (wwPDB-VP) : 2.36

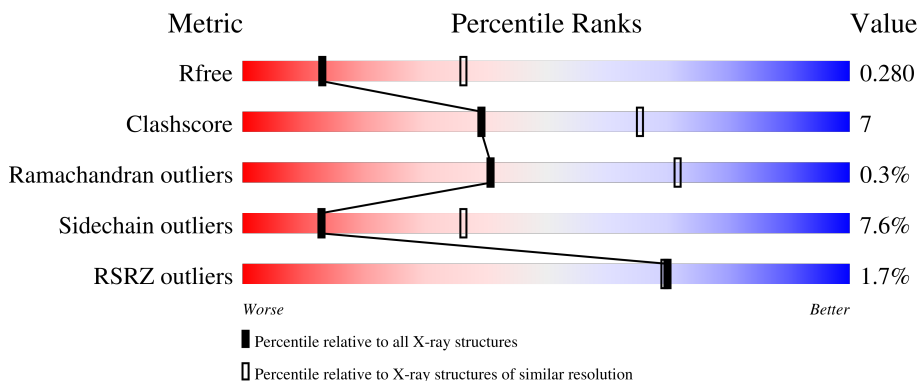
1 Overall quality at a glance

The following experimental techniques were used to determine the structure:

X-RAY DIFFRACTION

The reported resolution of this entry is 2.90 Å.

Percentile scores (ranging between 0-100) for global validation metrics of the entry are shown in the following graphic. The table shows the number of entries on which the scores are based.



Metric	Whole archive (#Entries)	Similar resolution (#Entries, resolution range(Å))
R_{free}	130704	1957 (2.90-2.90)
Clashscore	141614	2172 (2.90-2.90)
Ramachandran outliers	138981	2115 (2.90-2.90)
Sidechain outliers	138945	2117 (2.90-2.90)
RSRZ outliers	127900	1906 (2.90-2.90)

The table below summarises the geometric issues observed across the polymeric chains and their fit to the electron density. The red, orange, yellow and green segments of the lower bar indicate the fraction of residues that contain outliers for ≥ 3 , 2, 1 and 0 types of geometric quality criteria respectively. A grey segment represents the fraction of residues that are not modelled. The numeric value for each fraction is indicated below the corresponding segment, with a dot representing fractions $\leq 5\%$. The upper red bar (where present) indicates the fraction of residues that have poor fit to the electron density. The numeric value is given above the bar.

Mol	Chain	Length	Quality of chain
1	A	323	 2% (red), 78% (green), 17% (yellow), .. (orange)
1	B	323	 % (red), 79% (green), 18% (yellow), .. (orange)

The following table lists non-polymeric compounds, carbohydrate monomers and non-standard residues in protein, DNA, RNA chains that are outliers for geometric or electron-density-fit criteria:

Mol	Type	Chain	Res	Chirality	Geometry	Clashes	Electron density
4	EPE	A	404	-	-	-	X

2 Entry composition [i](#)

There are 6 unique types of molecules in this entry. The entry contains 5222 atoms, of which 0 are hydrogens and 0 are deuteriums.

In the tables below, the ZeroOcc column contains the number of atoms modelled with zero occupancy, the AltConf column contains the number of residues with at least one atom in alternate conformation and the Trace column contains the number of residues modelled with at most 2 atoms.

- Molecule 1 is a protein called VirB11-like protein.

Mol	Chain	Residues	Atoms					ZeroOcc	AltConf	Trace
			Total	C	N	O	S			
1	A	323	Total 2575	C 1632	N 442	O 487	S 14	0	0	0
1	B	323	Total 2566	C 1627	N 441	O 484	S 14	0	0	0

- Molecule 2 is SULFATE ION (three-letter code: SO4) (formula: O₄S).



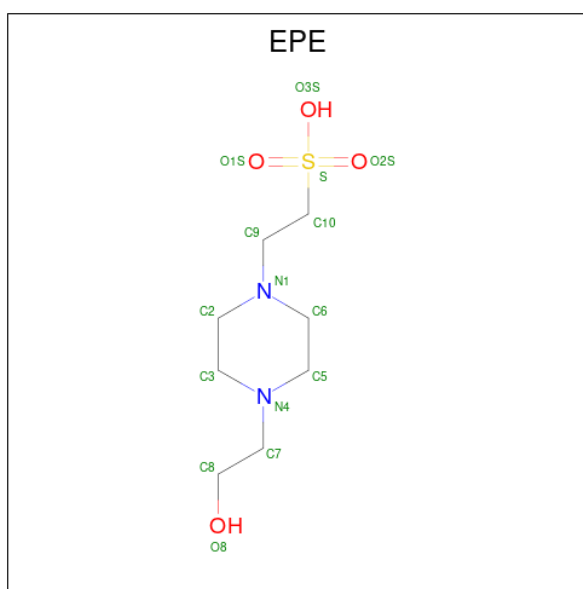
Mol	Chain	Residues	Atoms			ZeroOcc	AltConf
			Total	O	S		
2	A	1	Total 5	O 4	S 1	0	0
2	A	1	Total 5	O 4	S 1	0	0
2	B	1	Total 5	O 4	S 1	0	0
2	B	1	Total 5	O 4	S 1	0	0

- Molecule 3 is GLYCEROL (three-letter code: GOL) (formula: $C_3H_8O_3$).



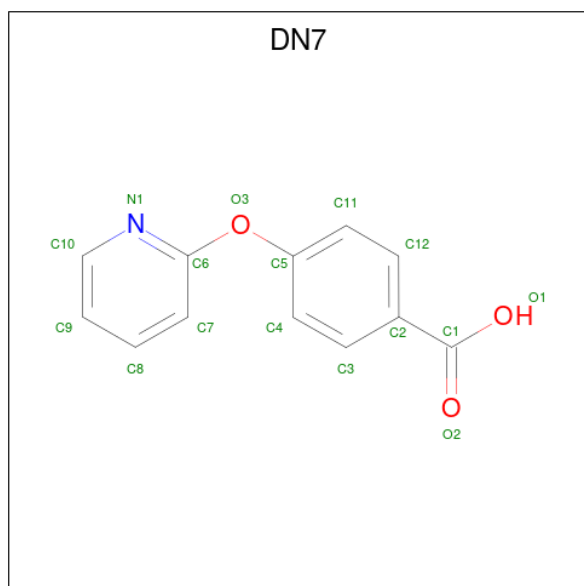
Mol	Chain	Residues	Atoms			ZeroOcc	AltConf
3	A	1	Total	C	O	0	0
			6	3	3		
3	B	1	Total	C	O	0	0
			6	3	3		

- Molecule 4 is 4-(2-HYDROXYETHYL)-1-PIPERAZINE ETHANESULFONIC ACID (three-letter code: EPE) (formula: $C_8H_{18}N_2O_4S$).



Mol	Chain	Residues	Atoms					ZeroOcc	AltConf
			Total	C	N	O	S		
4	A	1	15	8	2	4	1	0	0

- Molecule 5 is 4-[(pyridin-2-yl)oxy]benzoic acid (three-letter code: DN7) (formula: C₁₂H₉NO₃).



Mol	Chain	Residues	Atoms				ZeroOcc	AltConf
			Total	C	N	O		
5	B	1	16	12	1	3	0	0

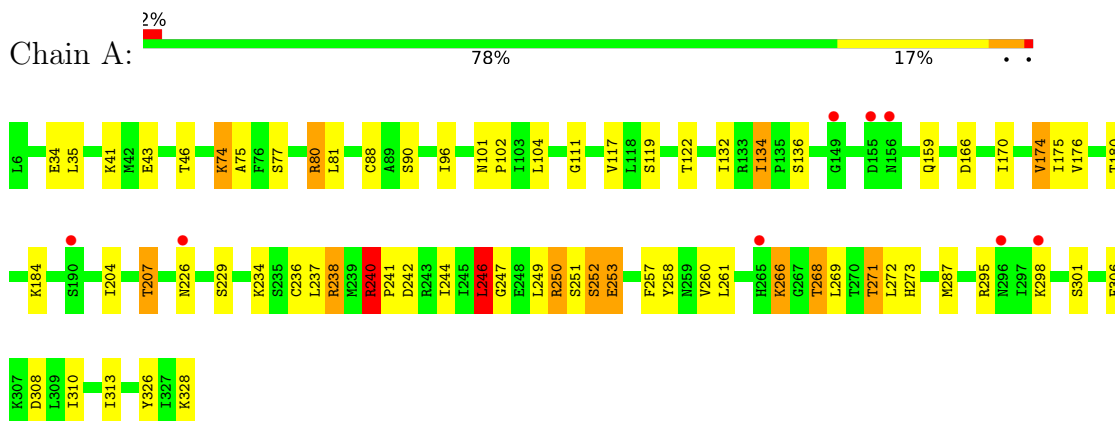
- Molecule 6 is water.

Mol	Chain	Residues	Atoms		ZeroOcc	AltConf
6	A	9	Total	O	0	0
			9	9		
6	B	9	Total	O	0	0
			9	9		

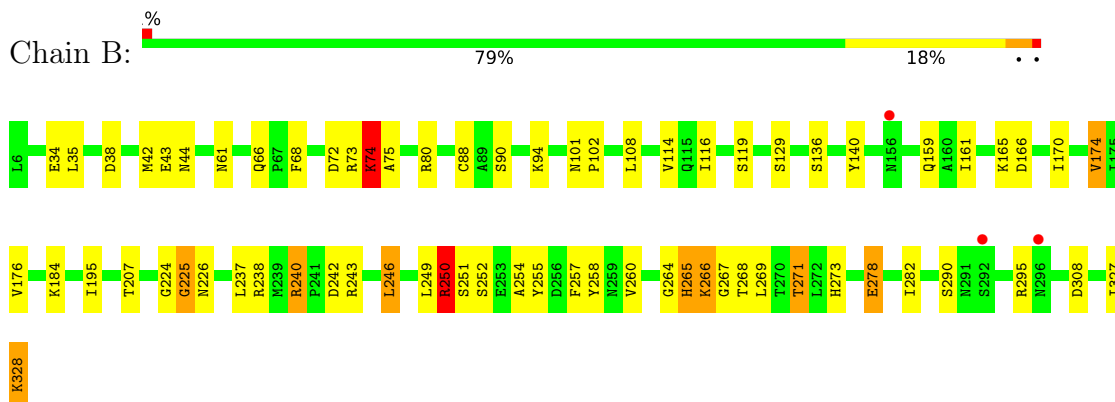
3 Residue-property plots [i](#)

These plots are drawn for all protein, RNA, DNA and oligosaccharide chains in the entry. The first graphic for a chain summarises the proportions of the various outlier classes displayed in the second graphic. The second graphic shows the sequence view annotated by issues in geometry and electron density. Residues are color-coded according to the number of geometric quality criteria for which they contain at least one outlier: green = 0, yellow = 1, orange = 2 and red = 3 or more. A red dot above a residue indicates a poor fit to the electron density ($RSRZ > 2$). Stretches of 2 or more consecutive residues without any outlier are shown as a green connector. Residues present in the sample, but not in the model, are shown in grey.

- Molecule 1: VirB11-like protein



- Molecule 1: VirB11-like protein



4 Data and refinement statistics

Property	Value	Source
Space group	P 63 2 2	Depositor
Cell constants a, b, c, α , β , γ	112.08Å 112.08Å 231.01Å 90.00° 90.00° 120.00°	Depositor
Resolution (Å)	38.53 – 2.90 38.50 – 2.90	Depositor EDS
% Data completeness (in resolution range)	91.7 (38.53-2.90) 91.7 (38.50-2.90)	Depositor EDS
R_{merge}	(Not available)	Depositor
R_{sym}	(Not available)	Depositor
$\langle I/\sigma(I) \rangle$ ¹	7.44 (at 2.90Å)	Xtrriage
Refinement program	REFMAC 5.8.0230	Depositor
R, R_{free}	0.223 , 0.280 0.229 , 0.280	Depositor DCC
R_{free} test set	910 reflections (5.03%)	wwPDB-VP
Wilson B-factor (Å ²)	45.4	Xtrriage
Anisotropy	0.260	Xtrriage
Bulk solvent k_{sol} (e/Å ³), B_{sol} (Å ²)	0.35 , 47.1	EDS
L-test for twinning ²	$\langle L \rangle = 0.47$, $\langle L^2 \rangle = 0.30$	Xtrriage
Estimated twinning fraction	No twinning to report.	Xtrriage
F_o, F_c correlation	0.94	EDS
Total number of atoms	5222	wwPDB-VP
Average B, all atoms (Å ²)	47.0	wwPDB-VP

Xtrriage's analysis on translational NCS is as follows: *The analyses of the Patterson function reveals a significant off-origin peak that is 57.00 % of the origin peak, indicating pseudo-translational symmetry. The chance of finding a peak of this or larger height randomly in a structure without pseudo-translational symmetry is equal to 2.5229e-05. The detected translational NCS is most likely also responsible for the elevated intensity ratio.*

¹Intensities estimated from amplitudes.

²Theoretical values of $\langle |L| \rangle$, $\langle L^2 \rangle$ for acentric reflections are 0.5, 0.333 respectively for untwinned datasets, and 0.375, 0.2 for perfectly twinned datasets.

5 Model quality [i](#)

5.1 Standard geometry [i](#)

Bond lengths and bond angles in the following residue types are not validated in this section: DN7, GOL, EPE, SO4

The Z score for a bond length (or angle) is the number of standard deviations the observed value is removed from the expected value. A bond length (or angle) with $|Z| > 5$ is considered an outlier worth inspection. RMSZ is the root-mean-square of all Z scores of the bond lengths (or angles).

Mol	Chain	Bond lengths		Bond angles	
		RMSZ	# $ Z > 5$	RMSZ	# $ Z > 5$
1	A	0.54	1/2624 (0.0%)	0.75	3/3533 (0.1%)
1	B	0.52	1/2615 (0.0%)	0.74	3/3523 (0.1%)
All	All	0.53	2/5239 (0.0%)	0.74	6/7056 (0.1%)

Chiral center outliers are detected by calculating the chiral volume of a chiral center and verifying if the center is modelled as a planar moiety or with the opposite hand. A planarity outlier is detected by checking planarity of atoms in a peptide group, atoms in a mainchain group or atoms of a sidechain that are expected to be planar.

Mol	Chain	#Chirality outliers	#Planarity outliers
1	A	0	3
1	B	0	4
All	All	0	7

All (2) bond length outliers are listed below:

Mol	Chain	Res	Type	Atoms	Z	Observed(Å)	Ideal(Å)
1	A	246	LEU	C-O	-6.53	1.10	1.23
1	B	246	LEU	C-O	-5.10	1.13	1.23

All (6) bond angle outliers are listed below:

Mol	Chain	Res	Type	Atoms	Z	Observed($^{\circ}$)	Ideal($^{\circ}$)
1	B	74	LYS	N-CA-CB	-7.99	96.22	110.60
1	A	250	ARG	NE-CZ-NH1	-6.08	117.26	120.30
1	A	250	ARG	NE-CZ-NH2	5.39	122.99	120.30
1	B	250	ARG	NE-CZ-NH2	-5.30	117.65	120.30
1	B	250	ARG	NE-CZ-NH1	5.21	122.91	120.30
1	A	240	ARG	NE-CZ-NH1	5.13	122.86	120.30

There are no chirality outliers.

All (7) planarity outliers are listed below:

Mol	Chain	Res	Type	Group
1	A	238	ARG	Sidechain
1	A	240	ARG	Sidechain
1	A	295	ARG	Sidechain
1	B	238	ARG	Sidechain
1	B	240	ARG	Sidechain
1	B	250	ARG	Sidechain
1	B	295	ARG	Sidechain

5.2 Too-close contacts [i](#)

In the following table, the Non-H and H(model) columns list the number of non-hydrogen atoms and hydrogen atoms in the chain respectively. The H(added) column lists the number of hydrogen atoms added and optimized by MolProbity. The Clashes column lists the number of clashes within the asymmetric unit, whereas Symm-Clashes lists symmetry-related clashes.

Mol	Chain	Non-H	H(model)	H(added)	Clashes	Symm-Clashes
1	A	2575	0	2562	44	1
1	B	2566	0	2544	34	1
2	A	10	0	0	1	0
2	B	10	0	0	1	0
3	A	6	0	8	0	0
3	B	6	0	8	3	0
4	A	15	0	18	0	0
5	B	16	0	0	2	0
6	A	9	0	0	0	0
6	B	9	0	0	1	0
All	All	5222	0	5140	77	1

The all-atom clashscore is defined as the number of clashes found per 1000 atoms (including hydrogen atoms). The all-atom clashscore for this structure is 7.

All (77) close contacts within the same asymmetric unit are listed below, sorted by their clash magnitude.

Atom-1	Atom-2	Interatomic distance (Å)	Clash overlap (Å)
1:A:35:LEU:HD12	1:A:75:ALA:HB1	1.52	0.91
1:A:310:ILE:HG21	1:A:313:ILE:HD11	1.54	0.89
1:B:237:LEU:HD11	1:B:260:VAL:HG22	1.64	0.79
1:B:72:ASP:HB2	6:B:504:HOH:O	1.85	0.76

Continued on next page...

Continued from previous page...

Atom-1	Atom-2	Interatomic distance (Å)	Clash overlap (Å)
1:B:161:ILE:O	1:B:165:LYS:HG3	1.90	0.72
1:A:35:LEU:HD11	1:A:75:ALA:O	1.93	0.68
1:A:310:ILE:HG21	1:A:313:ILE:CD1	2.27	0.63
1:A:117:VAL:HG12	1:A:122:THR:HG23	1.80	0.62
1:A:242:ASP:O	1:A:266:LYS:HB3	1.99	0.62
1:B:140:TYR:OH	2:B:403:SO4:O1	2.15	0.62
1:A:77:SER:OG	1:A:80:ARG:HB2	1.98	0.62
1:B:166:ASP:O	1:B:170:ILE:HG12	2.00	0.62
1:A:237:LEU:HD11	1:A:260:VAL:HG22	1.83	0.61
1:B:38:ASP:HB3	5:B:401:DN7:C3	2.32	0.60
1:A:313:ILE:HB	1:A:326:TYR:HB3	1.84	0.59
1:B:74:LYS:HB3	3:B:404:GOL:O3	2.03	0.58
1:B:249:LEU:HD11	1:B:257:PHE:CD2	2.38	0.58
1:A:251:SER:OG	1:A:252:SER:N	2.37	0.57
1:A:180:THR:OG1	1:A:273:HIS:HE1	1.88	0.56
1:B:264:GLY:O	1:B:265:HIS:O	2.24	0.56
1:A:247:GLY:O	1:A:271:THR:OG1	2.13	0.55
1:B:75:ALA:HB2	3:B:404:GOL:O1	2.07	0.55
1:A:272:LEU:HD13	1:A:287:MET:HE1	1.89	0.55
1:A:310:ILE:CG2	1:A:313:ILE:HD11	2.32	0.54
1:A:34:GLU:OE2	1:A:80:ARG:HG3	2.08	0.53
1:A:313:ILE:HG12	1:A:326:TYR:CD2	2.45	0.52
1:A:175:ILE:HB	1:A:313:ILE:HD12	1.93	0.51
1:A:257:PHE:HE1	1:A:268:THR:HG21	1.77	0.50
1:B:278:GLU:O	1:B:282:ILE:HD12	2.11	0.50
1:A:236:CYS:SG	1:A:244:ILE:HG12	2.52	0.50
1:A:176:VAL:O	1:A:271:THR:HA	2.12	0.49
1:A:257:PHE:CE1	1:A:268:THR:HG21	2.48	0.49
1:B:42:MET:HE3	5:B:401:DN7:C3	2.42	0.49
1:A:41:LYS:NZ	1:B:72:ASP:OD2	2.37	0.49
1:A:253:GLU:H	1:A:253:GLU:HG3	1.35	0.48
1:A:258:TYR:HA	1:A:261:LEU:HD12	1.96	0.48
1:B:73:ARG:HA	3:B:404:GOL:H2	1.95	0.48
1:B:255:TYR:O	1:B:258:TYR:HB3	2.14	0.48
1:A:272:LEU:CD1	1:A:287:MET:HE1	2.45	0.47
1:A:111:GLY:O	1:A:207:THR:HG21	2.14	0.47
1:A:35:LEU:HD21	1:A:81:LEU:HD23	1.96	0.47
1:A:298:LYS:O	1:A:301:SER:HB2	2.15	0.47
1:A:101:ASN:N	1:A:102:PRO:HD3	2.30	0.47
1:B:44:ASN:HA	1:B:61:ASN:ND2	2.30	0.47
1:B:66:GLN:HG2	1:B:68:PHE:CE1	2.50	0.47

Continued on next page...

Continued from previous page...

Atom-1	Atom-2	Interatomic distance (Å)	Clash overlap (Å)
1:B:242:ASP:O	1:B:266:LYS:HG2	2.16	0.46
1:A:74:LYS:O	1:A:74:LYS:HG3	2.16	0.46
1:B:34:GLU:OE2	1:B:80:ARG:HD3	2.16	0.45
1:B:35:LEU:HD12	1:B:75:ALA:HB1	1.98	0.45
1:B:252:SER:O	1:B:254:ALA:N	2.49	0.45
1:A:166:ASP:O	1:A:170:ILE:HG12	2.15	0.45
1:B:184:LYS:NZ	1:B:273:HIS:CD2	2.85	0.45
1:A:229:SER:HB3	1:A:253:GLU:HG2	1.98	0.45
1:B:161:ILE:HG23	1:B:165:LYS:HE3	1.98	0.45
1:B:224:GLY:O	1:B:225:GLY:C	2.54	0.44
1:A:240:ARG:N	1:A:241:PRO:CD	2.80	0.44
1:A:174:VAL:HG13	1:A:269:LEU:CD1	2.48	0.44
1:A:310:ILE:CG2	1:A:313:ILE:CD1	2.92	0.44
1:B:174:VAL:HG13	1:B:269:LEU:CD1	2.48	0.43
1:B:101:ASN:N	1:B:102:PRO:HD3	2.34	0.43
1:A:35:LEU:CD1	1:A:75:ALA:HB1	2.37	0.43
1:B:176:VAL:O	1:B:271:THR:HA	2.18	0.43
1:A:96:ILE:HD12	1:A:104:LEU:CB	2.49	0.43
1:A:204:ILE:O	1:A:246:LEU:O	2.37	0.43
1:A:132:ILE:HG22	1:A:134:ILE:HD13	2.01	0.43
1:B:243:ARG:CD	1:B:267:GLY:HA3	2.48	0.42
1:B:116:ILE:HA	1:B:129:SER:O	2.20	0.42
1:A:80:ARG:HA	1:A:80:ARG:HD2	1.73	0.42
1:B:184:LYS:HZ1	1:B:273:HIS:CD2	2.38	0.42
1:B:327:ILE:HG22	1:B:328:LYS:HG2	2.02	0.41
1:A:234:LYS:HE2	1:A:238:ARG:NH2	2.36	0.41
1:B:108:LEU:CD2	1:B:114:VAL:HG21	2.51	0.41
1:A:258:TYR:HB2	1:A:306:PHE:CZ	2.56	0.41
1:A:257:PHE:HE1	1:A:268:THR:CG2	2.34	0.40
1:B:195:ILE:HG21	1:B:243:ARG:HG3	2.03	0.40
1:B:251:SER:OG	1:B:252:SER:N	2.54	0.40
1:A:184:LYS:HE3	2:A:401:SO4:O2	2.22	0.40

All (1) symmetry-related close contacts are listed below. The label for Atom-2 includes the symmetry operator and encoded unit-cell translations to be applied.

Atom-1	Atom-2	Interatomic distance (Å)	Clash overlap (Å)
1:A:46:THR:OG1	1:B:240:ARG:NH1[2_665]	2.01	0.19

5.3 Torsion angles [i](#)

5.3.1 Protein backbone [i](#)

In the following table, the Percentiles column shows the percent Ramachandran outliers of the chain as a percentile score with respect to all X-ray entries followed by that with respect to entries of similar resolution.

The Analysed column shows the number of residues for which the backbone conformation was analysed, and the total number of residues.

Mol	Chain	Analysed	Favoured	Allowed	Outliers	Percentiles	
1	A	321/323 (99%)	298 (93%)	23 (7%)	0	100	100
1	B	321/323 (99%)	308 (96%)	11 (3%)	2 (1%)	25	58
All	All	642/646 (99%)	606 (94%)	34 (5%)	2 (0%)	41	71

All (2) Ramachandran outliers are listed below:

Mol	Chain	Res	Type
1	B	265	HIS
1	B	225	GLY

5.3.2 Protein sidechains [i](#)

In the following table, the Percentiles column shows the percent sidechain outliers of the chain as a percentile score with respect to all X-ray entries followed by that with respect to entries of similar resolution.

The Analysed column shows the number of residues for which the sidechain conformation was analysed, and the total number of residues.

Mol	Chain	Analysed	Rotameric	Outliers	Percentiles	
1	A	286/286 (100%)	263 (92%)	23 (8%)	12	33
1	B	283/286 (99%)	263 (93%)	20 (7%)	14	40
All	All	569/572 (100%)	526 (92%)	43 (8%)	13	36

All (43) residues with a non-rotameric sidechain are listed below:

Mol	Chain	Res	Type
1	A	43	GLU
1	A	74	LYS
1	A	80	ARG
1	A	88	CYS

Continued on next page...

Continued from previous page...

Mol	Chain	Res	Type
1	A	90	SER
1	A	119	SER
1	A	134	ILE
1	A	136	SER
1	A	159	GLN
1	A	174	VAL
1	A	207	THR
1	A	226	ASN
1	A	240	ARG
1	A	246	LEU
1	A	249	LEU
1	A	250	ARG
1	A	252	SER
1	A	253	GLU
1	A	266	LYS
1	A	268	THR
1	A	271	THR
1	A	308	ASP
1	A	328	LYS
1	B	43	GLU
1	B	74	LYS
1	B	88	CYS
1	B	90	SER
1	B	94	LYS
1	B	119	SER
1	B	136	SER
1	B	159	GLN
1	B	174	VAL
1	B	207	THR
1	B	226	ASN
1	B	246	LEU
1	B	250	ARG
1	B	266	LYS
1	B	268	THR
1	B	271	THR
1	B	278	GLU
1	B	290	SER
1	B	308	ASP
1	B	328	LYS

Sometimes sidechains can be flipped to improve hydrogen bonding and reduce clashes. All (15) such sidechains are listed below:

Mol	Chain	Res	Type
1	A	51	ASN
1	A	110	ASN
1	A	214	HIS
1	A	215	HIS
1	A	226	ASN
1	A	273	HIS
1	A	286	ASN
1	B	44	ASN
1	B	51	ASN
1	B	61	ASN
1	B	83	HIS
1	B	110	ASN
1	B	215	HIS
1	B	273	HIS
1	B	286	ASN

5.3.3 RNA [i](#)

There are no RNA molecules in this entry.

5.4 Non-standard residues in protein, DNA, RNA chains [i](#)

There are no non-standard protein/DNA/RNA residues in this entry.

5.5 Carbohydrates [i](#)

There are no monosaccharides in this entry.

5.6 Ligand geometry [i](#)

8 ligands are modelled in this entry.

In the following table, the Counts columns list the number of bonds (or angles) for which Mogul statistics could be retrieved, the number of bonds (or angles) that are observed in the model and the number of bonds (or angles) that are defined in the Chemical Component Dictionary. The Link column lists molecule types, if any, to which the group is linked. The Z score for a bond length (or angle) is the number of standard deviations the observed value is removed from the expected value. A bond length (or angle) with $|Z| > 2$ is considered an outlier worth inspection. RMSZ is the root-mean-square of all Z scores of the bond lengths (or angles).

Mol	Type	Chain	Res	Link	Bond lengths			Bond angles		
					Counts	RMSZ	# Z > 2	Counts	RMSZ	# Z > 2
4	EPE	A	404	-	15,15,15	1.92	1 (6%)	18,20,20	1.84	6 (33%)
2	SO4	A	401	-	4,4,4	0.18	0	6,6,6	0.58	0
2	SO4	B	402	-	4,4,4	0.45	0	6,6,6	0.43	0
3	GOL	A	403	-	5,5,5	0.73	0	5,5,5	0.95	0
3	GOL	B	404	-	5,5,5	0.55	0	5,5,5	0.37	0
5	DN7	B	401	-	17,17,17	0.91	0	22,22,22	2.49	12 (54%)
2	SO4	A	402	-	4,4,4	0.23	0	6,6,6	0.55	0
2	SO4	B	403	-	4,4,4	0.29	0	6,6,6	0.36	0

In the following table, the Chirals column lists the number of chiral outliers, the number of chiral centers analysed, the number of these observed in the model and the number defined in the Chemical Component Dictionary. Similar counts are reported in the Torsion and Rings columns. '-' means no outliers of that kind were identified.

Mol	Type	Chain	Res	Link	Chirals	Torsions	Rings
5	DN7	B	401	-	-	4/8/8/8	0/2/2/2
3	GOL	B	404	-	-	2/4/4/4	-
3	GOL	A	403	-	-	1/4/4/4	-
4	EPE	A	404	-	-	2/9/19/19	0/1/1/1

All (1) bond length outliers are listed below:

Mol	Chain	Res	Type	Atoms	Z	Observed(Å)	Ideal(Å)
4	A	404	EPE	C10-S	-7.04	1.67	1.77

All (18) bond angle outliers are listed below:

Mol	Chain	Res	Type	Atoms	Z	Observed(°)	Ideal(°)
5	B	401	DN7	O3-C5-C11	4.38	134.78	119.38
5	B	401	DN7	C5-O3-C6	4.21	128.93	118.83
5	B	401	DN7	O3-C6-C7	4.20	123.80	115.35
4	A	404	EPE	C6-N1-C2	4.09	118.02	108.83
5	B	401	DN7	C12-C2-C1	3.94	128.15	120.39
5	B	401	DN7	O3-C5-C4	-3.20	108.12	119.38
5	B	401	DN7	C3-C4-C5	3.16	123.60	119.73
4	A	404	EPE	C3-C2-N1	3.16	117.12	110.64
5	B	401	DN7	C3-C2-C12	-2.74	114.68	118.59
4	A	404	EPE	O3S-S-C10	2.61	109.99	105.77
4	A	404	EPE	C6-C5-N4	-2.61	105.29	110.64
5	B	401	DN7	C11-C12-C2	2.52	123.70	120.78
5	B	401	DN7	C9-C10-N1	2.49	127.50	123.43

Continued on next page...

Continued from previous page...

Mol	Chain	Res	Type	Atoms	Z	Observed(°)	Ideal(°)
5	B	401	DN7	C7-C6-N1	-2.44	121.22	124.87
5	B	401	DN7	C11-C5-C4	-2.29	116.66	120.18
5	B	401	DN7	C8-C9-C10	-2.24	114.29	118.62
4	A	404	EPE	O1S-S-C10	2.23	109.61	106.92
4	A	404	EPE	O2S-S-C10	2.09	109.43	106.92

There are no chirality outliers.

All (9) torsion outliers are listed below:

Mol	Chain	Res	Type	Atoms
3	B	404	GOL	C1-C2-C3-O3
5	B	401	DN7	C7-C6-O3-C5
5	B	401	DN7	N1-C6-O3-C5
3	B	404	GOL	O2-C2-C3-O3
3	A	403	GOL	O1-C1-C2-C3
4	A	404	EPE	N4-C7-C8-O8
5	B	401	DN7	C11-C5-O3-C6
5	B	401	DN7	C4-C5-O3-C6
4	A	404	EPE	S-C10-C9-N1

There are no ring outliers.

4 monomers are involved in 7 short contacts:

Mol	Chain	Res	Type	Clashes	Symm-Clashes
2	A	401	SO4	1	0
3	B	404	GOL	3	0
5	B	401	DN7	2	0
2	B	403	SO4	1	0

5.7 Other polymers [i](#)

There are no such residues in this entry.

5.8 Polymer linkage issues [i](#)

There are no chain breaks in this entry.

6 Fit of model and data [i](#)

6.1 Protein, DNA and RNA chains [i](#)

In the following table, the column labelled ‘#RSRZ > 2’ contains the number (and percentage) of RSRZ outliers, followed by percent RSRZ outliers for the chain as percentile scores relative to all X-ray entries and entries of similar resolution. The OWAB column contains the minimum, median, 95th percentile and maximum values of the occupancy-weighted average B-factor per residue. The column labelled ‘Q < 0.9’ lists the number of (and percentage) of residues with an average occupancy less than 0.9.

Mol	Chain	Analysed	<RSRZ>	#RSRZ>2	OWAB(Å ²)	Q<0.9
1	A	323/323 (100%)	-0.00	8 (2%) 57 55	25, 44, 79, 112	0
1	B	323/323 (100%)	-0.05	3 (0%) 84 84	23, 42, 76, 98	0
All	All	646/646 (100%)	-0.02	11 (1%) 70 69	23, 43, 78, 112	0

All (11) RSRZ outliers are listed below:

Mol	Chain	Res	Type	RSRZ
1	A	296	ASN	3.9
1	B	296	ASN	2.9
1	A	156	ASN	2.9
1	A	298	LYS	2.6
1	A	190	SER	2.5
1	A	226	ASN	2.4
1	A	155	ASP	2.4
1	B	156	ASN	2.3
1	A	265	HIS	2.2
1	A	149	GLY	2.1
1	B	292	SER	2.1

6.2 Non-standard residues in protein, DNA, RNA chains [i](#)

There are no non-standard protein/DNA/RNA residues in this entry.

6.3 Carbohydrates [i](#)

There are no monosaccharides in this entry.

6.4 Ligands [i](#)

In the following table, the Atoms column lists the number of modelled atoms in the group and the number defined in the chemical component dictionary. The B-factors column lists the minimum, median, 95th percentile and maximum values of B factors of atoms in the group. The column labelled 'Q< 0.9' lists the number of atoms with occupancy less than 0.9.

Mol	Type	Chain	Res	Atoms	RSCC	RSR	B-factors(Å ²)	Q<0.9
4	EPE	A	404	15/15	0.66	0.54	94,106,147,149	0
3	GOL	A	403	6/6	0.67	0.25	45,51,54,54	0
5	DN7	B	401	16/16	0.82	0.34	53,62,69,72	1
3	GOL	B	404	6/6	0.90	0.16	44,47,48,50	0
2	SO4	A	402	5/5	0.91	0.22	62,62,69,69	0
2	SO4	B	403	5/5	0.96	0.16	59,59,64,67	0
2	SO4	A	401	5/5	0.98	0.15	28,28,29,30	0
2	SO4	B	402	5/5	0.99	0.14	32,34,37,40	0

6.5 Other polymers [i](#)

There are no such residues in this entry.