



# Full wwPDB X-ray Structure Validation Report ⓘ

Nov 7, 2023 – 04:13 am GMT

PDB ID : 8BIU  
Title : Cystathionine gamma-lyase in complex with cystathionine  
Authors : Fernandez-Rodriguez, C.; Conter, C.; Oyenarte, I.; Favretto, F.; Quintana, I.;  
Martinez-Chantar, M.L.; Astegno, A.; Martinez-Cruz, L.A.  
Deposited on : 2022-11-02  
Resolution : 1.90 Å(reported)

This is a Full wwPDB X-ray Structure Validation Report for a publicly released PDB entry.

We welcome your comments at [validation@mail.wwpdb.org](mailto:validation@mail.wwpdb.org)

A user guide is available at

<https://www.wwpdb.org/validation/2017/XrayValidationReportHelp>

with specific help available everywhere you see the ⓘ symbol.

The types of validation reports are described at

<http://www.wwpdb.org/validation/2017/FAQs#types>.

---

The following versions of software and data (see [references ⓘ](#)) were used in the production of this report:

MolProbity : 4.02b-467  
Mogul : 1.8.4, CSD as541be (2020)  
Xtrriage (Phenix) : 1.13  
EDS : 2.36  
buster-report : 1.1.7 (2018)  
Percentile statistics : 20191225.v01 (using entries in the PDB archive December 25th 2019)  
Refmac : 5.8.0158  
CCP4 : 7.0.044 (Gargrove)  
Ideal geometry (proteins) : Engh & Huber (2001)  
Ideal geometry (DNA, RNA) : Parkinson et al. (1996)  
Validation Pipeline (wwPDB-VP) : 2.36

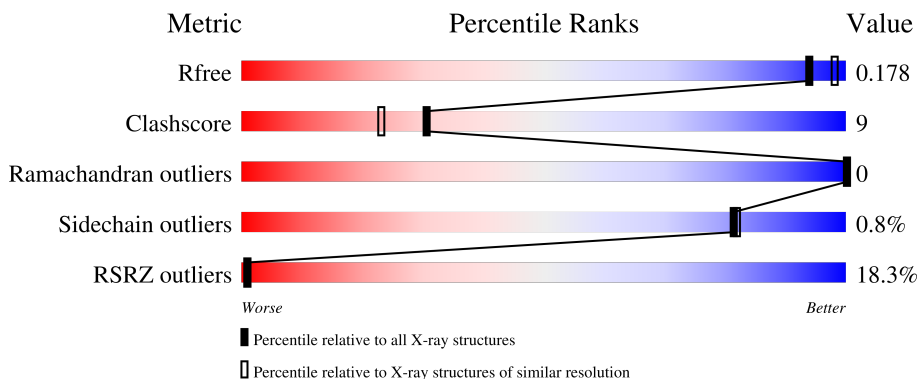
# 1 Overall quality at a glance

The following experimental techniques were used to determine the structure:

*X-RAY DIFFRACTION*

The reported resolution of this entry is 1.90 Å.

Percentile scores (ranging between 0-100) for global validation metrics of the entry are shown in the following graphic. The table shows the number of entries on which the scores are based.



Metric	Whole archive (#Entries)	Similar resolution (#Entries, resolution range(Å))
$R_{free}$	130704	6207 (1.90-1.90)
Clashscore	141614	6847 (1.90-1.90)
Ramachandran outliers	138981	6760 (1.90-1.90)
Sidechain outliers	138945	6760 (1.90-1.90)
RSRZ outliers	127900	6082 (1.90-1.90)

The table below summarises the geometric issues observed across the polymeric chains and their fit to the electron density. The red, orange, yellow and green segments of the lower bar indicate the fraction of residues that contain outliers for  $\geq 3$ , 2, 1 and 0 types of geometric quality criteria respectively. A grey segment represents the fraction of residues that are not modelled. The numeric value for each fraction is indicated below the corresponding segment, with a dot representing fractions  $\leq 5\%$ . The upper red bar (where present) indicates the fraction of residues that have poor fit to the electron density. The numeric value is given above the bar.

Mol	Chain	Length	Quality of chain
1	A	417	
1	G	417	

The following table lists non-polymeric compounds, carbohydrate monomers and non-standard residues in protein, DNA, RNA chains that are outliers for geometric or electron-density-fit criteria:

Mol	Type	Chain	Res	Chirality	Geometry	Clashes	Electron density
3	2KT	A	601	-	-	X	X

## 2 Entry composition [i](#)

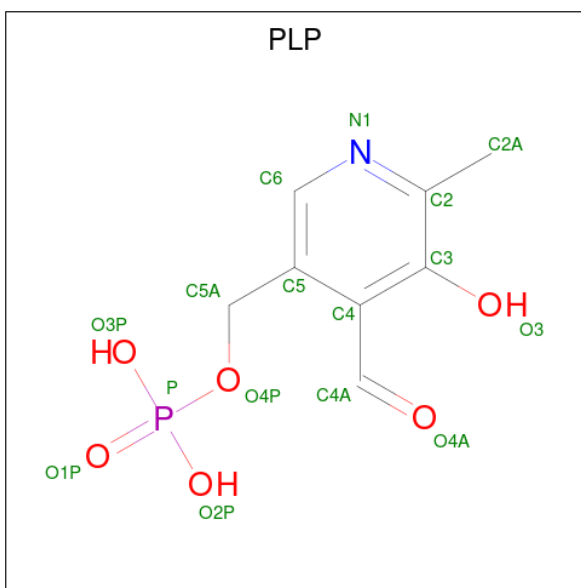
There are 4 unique types of molecules in this entry. The entry contains 6199 atoms, of which 5 are hydrogens and 0 are deuteriums.

In the tables below, the ZeroOcc column contains the number of atoms modelled with zero occupancy, the AltConf column contains the number of residues with at least one atom in alternate conformation and the Trace column contains the number of residues modelled with at most 2 atoms.

- Molecule 1 is a protein called Cystathionine beta-lyase, putative.

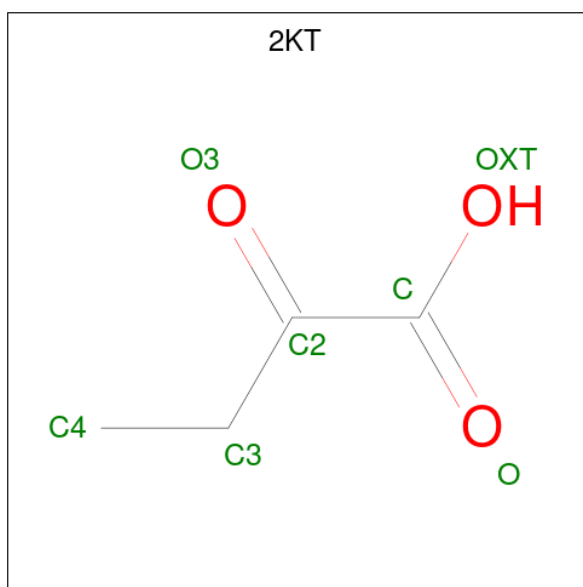
Mol	Chain	Residues	Atoms					ZeroOcc	AltConf	Trace
			Total	C	N	O	S			
1	G	389	Total 2983	C 1901	N 504	O 558	S 20	0	1	0
1	A	393	Total 3014	C 1923	N 509	O 561	S 21	0	1	0

- Molecule 2 is PYRIDOXAL-5'-PHOSPHATE (three-letter code: PLP) (formula: C<sub>8</sub>H<sub>10</sub>NO<sub>6</sub>P) (labeled as "Ligand of Interest" by depositor).



Mol	Chain	Residues	Atoms					ZeroOcc	AltConf
			Total	C	N	O	P		
2	G	1	Total 15	C 8	N 1	O 5	P 1	0	0
2	A	1	Total 15	C 8	N 1	O 5	P 1	0	0

- Molecule 3 is 2-KETOBUTYRIC ACID (three-letter code: 2KT) (formula: C<sub>4</sub>H<sub>6</sub>O<sub>3</sub>) (labeled as "Ligand of Interest" by depositor).



Mol	Chain	Residues	Atoms				ZeroOcc	AltConf
3	A	1	Total	C	H	O	0	0
			12	4	5	3		

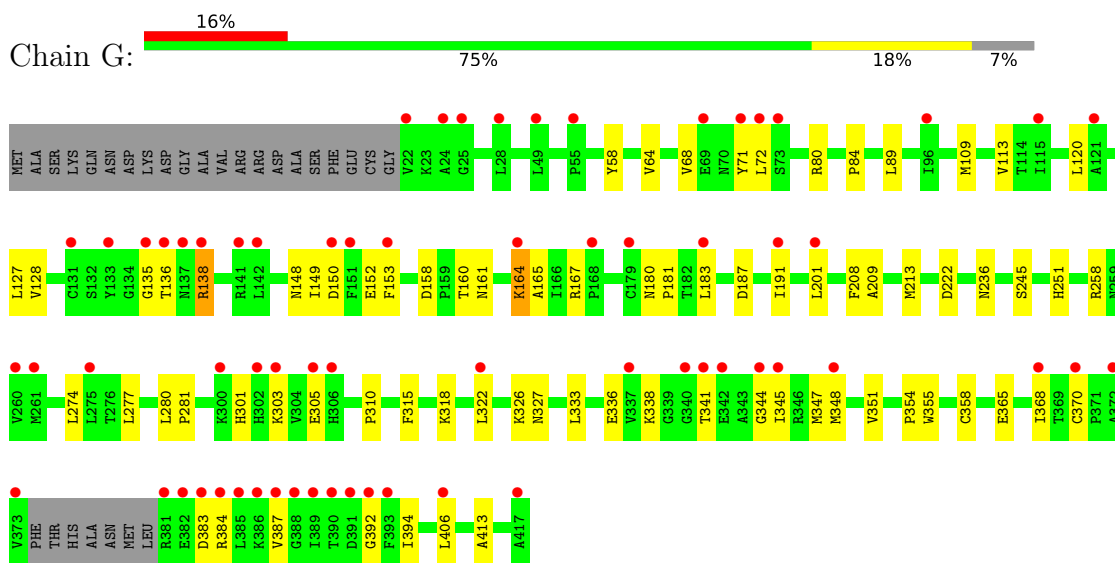
- Molecule 4 is water.

Mol	Chain	Residues	Atoms		ZeroOcc	AltConf
4	G	79	Total	O	0	0
			79	79		
4	A	81	Total	O	0	0
			81	81		

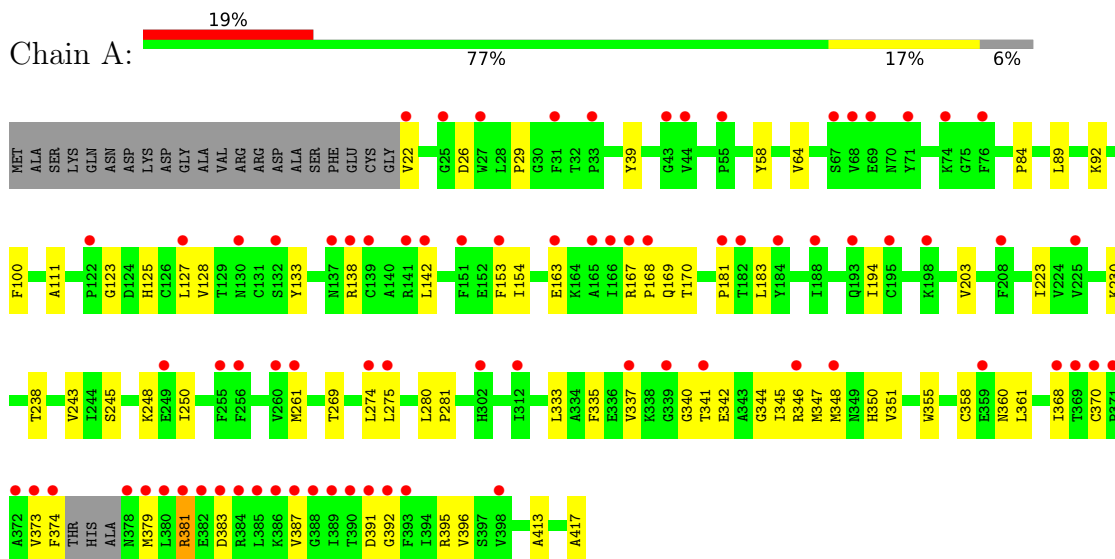
### 3 Residue-property plots [i](#)

These plots are drawn for all protein, RNA, DNA and oligosaccharide chains in the entry. The first graphic for a chain summarises the proportions of the various outlier classes displayed in the second graphic. The second graphic shows the sequence view annotated by issues in geometry and electron density. Residues are color-coded according to the number of geometric quality criteria for which they contain at least one outlier: green = 0, yellow = 1, orange = 2 and red = 3 or more. A red dot above a residue indicates a poor fit to the electron density ( $RSRZ > 2$ ). Stretches of 2 or more consecutive residues without any outlier are shown as a green connector. Residues present in the sample, but not in the model, are shown in grey.

- Molecule 1: Cystathionine beta-lyase, putative



- Molecule 1: Cystathionine beta-lyase, putative



## 4 Data and refinement statistics

Property	Value	Source
Space group	P 3 2 1	Depositor
Cell constants a, b, c, $\alpha$ , $\beta$ , $\gamma$	157.74Å 157.74Å 93.40Å 90.00° 90.00° 120.00°	Depositor
Resolution (Å)	93.40 – 1.90 93.40 – 1.90	Depositor EDS
% Data completeness (in resolution range)	100.0 (93.40-1.90) 100.0 (93.40-1.90)	Depositor EDS
$R_{merge}$	(Not available)	Depositor
$R_{sym}$	(Not available)	Depositor
$\langle I/\sigma(I) \rangle$ <sup>1</sup>	57.71 (at 1.90Å)	Xtrriage
Refinement program	PHENIX 1.18	Depositor
R, $R_{free}$	0.152 , 0.178 0.152 , 0.178	Depositor DCC
$R_{free}$ test set	5198 reflections (4.93%)	wwPDB-VP
Wilson B-factor (Å <sup>2</sup> )	22.0	Xtrriage
Anisotropy	0.074	Xtrriage
Bulk solvent $k_{sol}$ (e/Å <sup>3</sup> ), $B_{sol}$ (Å <sup>2</sup> )	0.37 , 26.1	EDS
L-test for twinning <sup>2</sup>	$\langle  L  \rangle = 0.39$ , $\langle L^2 \rangle = 0.21$	Xtrriage
Estimated twinning fraction	0.449 for -h,-k,l	Xtrriage
$F_o, F_c$ correlation	0.96	EDS
Total number of atoms	6199	wwPDB-VP
Average B, all atoms (Å <sup>2</sup> )	24.0	wwPDB-VP

Xtrriage's analysis on translational NCS is as follows: *The largest off-origin peak in the Patterson function is 3.72% of the height of the origin peak. No significant pseudotranslation is detected.*

<sup>1</sup>Intensities estimated from amplitudes.

<sup>2</sup>Theoretical values of  $\langle |L| \rangle$ ,  $\langle L^2 \rangle$  for acentric reflections are 0.5, 0.333 respectively for untwinned datasets, and 0.375, 0.2 for perfectly twinned datasets.

## 5 Model quality [i](#)

### 5.1 Standard geometry [i](#)

Bond lengths and bond angles in the following residue types are not validated in this section: PLP, 2KT

The Z score for a bond length (or angle) is the number of standard deviations the observed value is removed from the expected value. A bond length (or angle) with  $|Z| > 5$  is considered an outlier worth inspection. RMSZ is the root-mean-square of all Z scores of the bond lengths (or angles).

Mol	Chain	Bond lengths		Bond angles	
		RMSZ	# Z  >5	RMSZ	# Z  >5
1	A	0.38	0/3084	0.53	0/4188
1	G	0.37	0/3052	0.52	0/4147
All	All	0.38	0/6136	0.52	0/8335

There are no bond length outliers.

There are no bond angle outliers.

There are no chirality outliers.

There are no planarity outliers.

### 5.2 Too-close contacts [i](#)

In the following table, the Non-H and H(model) columns list the number of non-hydrogen atoms and hydrogen atoms in the chain respectively. The H(added) column lists the number of hydrogen atoms added and optimized by MolProbity. The Clashes column lists the number of clashes within the asymmetric unit, whereas Symm-Clashes lists symmetry-related clashes.

Mol	Chain	Non-H	H(model)	H(added)	Clashes	Symm-Clashes
1	A	3014	0	2949	52	0
1	G	2983	0	2921	63	0
2	A	15	0	7	0	0
2	G	15	0	7	0	0
3	A	7	5	5	4	0
4	A	81	0	0	2	0
4	G	79	0	0	2	0
All	All	6194	5	5889	109	0

The all-atom clashscore is defined as the number of clashes found per 1000 atoms (including hydrogen atoms). The all-atom clashscore for this structure is 9.



All (109) close contacts within the same asymmetric unit are listed below, sorted by their clash magnitude.

Atom-1	Atom-2	Interatomic distance (Å)	Clash overlap (Å)
1:G:370:CYS:HB2	1:G:394:ILE:HD13	1.59	0.85
1:A:383:ASP:O	1:A:387:VAL:HG23	1.77	0.82
1:G:305:GLU:HG2	1:G:338:LYS:HG2	1.62	0.80
1:G:138:ARG:HB3	1:G:138:ARG:NH1	1.98	0.78
1:A:360:ASN:N	3:A:601:2KT:O	2.17	0.78
1:G:138:ARG:HB3	1:G:138:ARG:HH11	1.48	0.77
1:G:370:CYS:HB2	1:G:394:ILE:CD1	2.14	0.77
1:A:163:GLU:HB2	1:A:194:ILE:HD13	1.77	0.67
1:A:337:VAL:HG11	1:A:344:GLY:HA2	1.76	0.67
1:G:209:ALA:HA	1:G:213:MET:HE2	1.76	0.67
1:A:346:ARG:NH2	1:A:417:ALA:O	2.28	0.67
1:A:167:ARG:HB3	1:A:168:PRO:HD2	1.78	0.66
1:G:209:ALA:HA	1:G:213:MET:CE	2.27	0.64
1:G:148:ASN:HB3	4:G:674:HOH:O	1.96	0.63
1:G:305:GLU:OE2	1:G:338:LYS:HE2	2.00	0.62
1:G:318:LYS:O	1:G:322:LEU:HD23	2.02	0.60
1:A:341:THR:HG23	1:A:342:GLU:OE1	2.01	0.59
1:G:161:ASN:O	1:G:164:LYS:HE3	2.02	0.58
1:G:164:LYS:HD2	1:G:165:ALA:N	2.18	0.58
1:G:161:ASN:O	1:G:164:LYS:HG3	2.04	0.58
1:G:348:MET:HA	1:G:348:MET:HE2	1.86	0.57
1:G:138:ARG:HH11	1:G:138:ARG:CB	2.16	0.56
1:A:238:THR:HB	1:A:269:THR:HG23	1.86	0.56
1:A:133:TYR:OH	3:A:601:2KT:H43	2.06	0.56
1:A:100:PHE:HZ	1:A:248:LYS:HE2	1.72	0.55
1:G:383:ASP:O	1:G:387:VAL:HG22	2.07	0.54
1:G:258:ARG:HA	4:G:620:HOH:O	2.06	0.54
1:A:127:LEU:HD22	1:A:154:ILE:HD13	1.90	0.54
1:G:301:HIS:HE1	1:G:303:LYS:HG3	1.73	0.53
1:A:341:THR:O	1:A:345:ILE:HG12	2.07	0.53
1:A:100:PHE:CZ	1:A:248:LYS:HE2	2.44	0.53
1:G:245:SER:HB2	1:G:251:HIS:HB2	1.91	0.53
1:G:113:VAL:HG21	1:A:261:MET:HA	1.91	0.53
1:A:89:LEU:HA	1:A:274:LEU:HD21	1.90	0.53
1:G:64:VAL:HA	1:A:358:CYS:HB3	1.91	0.53
1:A:280:LEU:C	1:A:280:LEU:HD23	2.30	0.52
1:G:150:ASP:OD2	1:G:167:ARG:NH1	2.41	0.51
1:G:384:ARG:HA	1:G:387:VAL:HG22	1.92	0.51
1:A:181:PRO:HB3	1:A:395:ARG:HD3	1.91	0.51
1:G:135:GLY:O	1:G:138:ARG:HG2	2.10	0.51

*Continued on next page...*

*Continued from previous page...*

Atom-1	Atom-2	Interatomic distance (Å)	Clash overlap (Å)
1:G:348:MET:HA	1:G:348:MET:CE	2.40	0.51
1:G:336:GLU:HA	1:G:392:GLY:O	2.11	0.51
1:G:344:GLY:O	1:G:348:MET:HG2	2.11	0.50
1:G:305:GLU:HG2	1:G:338:LYS:CG	2.37	0.50
1:A:123:GLY:O	1:A:169:GLN:NE2	2.38	0.50
1:G:187:ASP:O	1:G:191:ILE:HG13	2.12	0.49
1:A:391:ASP:OD1	1:A:392:GLY:N	2.45	0.48
1:G:127:LEU:HD23	1:G:152:GLU:HB3	1.95	0.48
1:A:22:VAL:HG13	1:A:26:ASP:HB2	1.95	0.48
1:G:310:PRO:HA	1:G:315:PHE:CD2	2.49	0.48
1:A:230:LYS:HG2	1:A:361:LEU:HD11	1.96	0.48
1:G:341:THR:O	1:G:345:ILE:HG13	2.14	0.48
1:A:381:ARG:H	1:A:381:ARG:CD	2.27	0.48
1:A:348:MET:HA	1:A:348:MET:CE	2.44	0.48
1:A:58:TYR:CD2	1:A:84:PRO:HB2	2.49	0.47
1:G:180:ASN:HB2	1:G:208:PHE:CE1	2.50	0.47
1:A:280:LEU:HB3	1:A:281:PRO:HD3	1.97	0.47
1:A:351:VAL:HA	1:A:413:ALA:HB2	1.96	0.47
1:A:360:ASN:CA	3:A:601:2KT:O	2.62	0.47
1:G:347:MET:HG2	1:G:413:ALA:HB1	1.97	0.46
1:A:360:ASN:HA	3:A:601:2KT:O	2.15	0.46
1:G:135:GLY:HA2	1:G:138:ARG:HG2	1.97	0.46
1:G:58:TYR:CD2	1:G:84:PRO:HB2	2.51	0.45
1:A:183:LEU:HD11	1:A:333:LEU:HA	1.98	0.45
1:G:183:LEU:HD11	1:G:333:LEU:HA	1.99	0.45
1:G:277:LEU:HD23	1:G:277:LEU:HA	1.84	0.45
1:A:125:HIS:HB3	1:A:170:THR:HA	1.98	0.45
1:G:280:LEU:HB3	1:G:281:PRO:HD3	1.99	0.45
1:A:370:CYS:SG	1:A:373:VAL:HG22	2.57	0.45
1:G:301:HIS:CE1	1:G:303:LYS:HG3	2.52	0.45
1:G:158:ASP:CG	1:G:160:THR:HG1	2.20	0.44
1:G:351:VAL:HG13	1:G:351:VAL:O	2.18	0.44
1:G:128:VAL:O	1:G:153:PHE:HA	2.18	0.44
1:G:201:LEU:HD13	1:G:222:ASP:CB	2.48	0.44
1:G:120:LEU:HD13	1:G:149:ILE:HG21	1.98	0.44
1:G:180:ASN:HA	1:G:181:PRO:HA	1.83	0.43
1:G:310:PRO:HA	1:G:315:PHE:CG	2.52	0.43
1:A:340:GLY:HA2	4:A:704:HOH:O	2.18	0.43
1:G:180:ASN:HB2	1:G:208:PHE:CZ	2.53	0.43
1:A:348:MET:HE3	1:A:368:ILE:HG12	2.00	0.43
1:G:71:TYR:O	1:G:72:LEU:HB2	2.19	0.43

*Continued on next page...*

Continued from previous page...

Atom-1	Atom-2	Interatomic distance (Å)	Clash overlap (Å)
1:G:80:ARG:NH2	1:A:133:TYR:OH	2.52	0.43
1:A:111:ALA:HB1	1:A:243:VAL:HG23	2.01	0.43
1:G:384:ARG:HA	1:G:387:VAL:CG2	2.49	0.43
1:A:138:ARG:CG	1:A:142:LEU:HD12	2.49	0.43
1:A:346:ARG:O	1:A:350:HIS:ND1	2.35	0.43
1:G:348:MET:O	1:G:351:VAL:HG12	2.19	0.42
1:G:89:LEU:HA	1:G:274:LEU:HD21	2.01	0.42
1:G:236:ASN:ND2	1:G:365:GLU:OE1	2.51	0.42
1:G:326:LYS:O	1:G:327:ASN:HB2	2.19	0.42
1:A:22:VAL:HG21	1:A:29:PRO:HD3	2.02	0.42
1:A:203:VAL:HG22	1:A:223:ILE:HD12	2.02	0.42
1:A:39:TYR:O	1:A:92:LYS:HE2	2.20	0.42
1:A:355:TRP:CZ3	1:A:396:VAL:HG13	2.55	0.42
1:A:351:VAL:HG11	1:A:368:ILE:HG21	2.02	0.41
1:G:68:VAL:HG21	1:A:345:ILE:HD12	2.01	0.41
1:G:358:CYS:HB3	1:A:64:VAL:HA	2.02	0.41
1:A:128:VAL:O	1:A:153:PHE:HA	2.20	0.41
1:A:163:GLU:HB2	1:A:194:ILE:CD1	2.48	0.41
1:A:245:SER:HB3	1:A:250:ILE:HG22	2.02	0.41
1:A:335:PHE:HE2	1:A:347:MET:HE2	1.86	0.41
1:A:337:VAL:HG11	1:A:344:GLY:CA	2.48	0.41
1:G:109:MET:HE1	1:G:136:THR:HA	2.03	0.41
1:G:354:PRO:HG2	1:G:406:LEU:HD23	2.03	0.41
1:A:392:GLY:HA3	4:A:704:HOH:O	2.21	0.40
1:G:164:LYS:HD2	1:G:164:LYS:C	2.41	0.40
1:G:351:VAL:HG22	1:G:355:TRP:HB2	2.03	0.40
1:G:68:VAL:HG22	1:A:374:PHE:CZ	2.56	0.40
1:G:368:ILE:HD11	1:G:394:ILE:HG21	2.03	0.40

There are no symmetry-related clashes.

## 5.3 Torsion angles [\(i\)](#)

### 5.3.1 Protein backbone [\(i\)](#)

In the following table, the Percentiles column shows the percent Ramachandran outliers of the chain as a percentile score with respect to all X-ray entries followed by that with respect to entries of similar resolution.

The Analysed column shows the number of residues for which the backbone conformation was analysed, and the total number of residues.

Mol	Chain	Analysed	Favoured	Allowed	Outliers	Percentiles	
1	A	390/417 (94%)	374 (96%)	16 (4%)	0	100	100
1	G	386/417 (93%)	373 (97%)	13 (3%)	0	100	100
All	All	776/834 (93%)	747 (96%)	29 (4%)	0	100	100

There are no Ramachandran outliers to report.

### 5.3.2 Protein sidechains [i](#)

In the following table, the Percentiles column shows the percent sidechain outliers of the chain as a percentile score with respect to all X-ray entries followed by that with respect to entries of similar resolution.

The Analysed column shows the number of residues for which the sidechain conformation was analysed, and the total number of residues.

Mol	Chain	Analysed	Rotameric	Outliers	Percentiles	
1	A	325/354 (92%)	322 (99%)	3 (1%)	78	79
1	G	323/354 (91%)	321 (99%)	2 (1%)	86	87
All	All	648/708 (92%)	643 (99%)	5 (1%)	81	82

All (5) residues with a non-rotameric sidechain are listed below:

Mol	Chain	Res	Type
1	G	138	ARG
1	G	164	LYS
1	A	275	LEU
1	A	379	MET
1	A	381	ARG

Sometimes sidechains can be flipped to improve hydrogen bonding and reduce clashes. There are no such sidechains identified.

### 5.3.3 RNA [i](#)

There are no RNA molecules in this entry.

## 5.4 Non-standard residues in protein, DNA, RNA chains [i](#)

There are no non-standard protein/DNA/RNA residues in this entry.

## 5.5 Carbohydrates [i](#)

There are no monosaccharides in this entry.

## 5.6 Ligand geometry [i](#)

3 ligands are modelled in this entry.

In the following table, the Counts columns list the number of bonds (or angles) for which Mogul statistics could be retrieved, the number of bonds (or angles) that are observed in the model and the number of bonds (or angles) that are defined in the Chemical Component Dictionary. The Link column lists molecule types, if any, to which the group is linked. The Z score for a bond length (or angle) is the number of standard deviations the observed value is removed from the expected value. A bond length (or angle) with  $|Z| > 2$  is considered an outlier worth inspection. RMSZ is the root-mean-square of all Z scores of the bond lengths (or angles).

Mol	Type	Chain	Res	Link	Bond lengths			Bond angles		
					Counts	RMSZ	# Z  > 2	Counts	RMSZ	# Z  > 2
2	PLP	A	602	1	15,15,16	9.26	4 (26%)	20,22,23	1.67	3 (15%)
3	2KT	A	601	-	6,6,6	1.25	0	7,7,7	1.54	2 (28%)
2	PLP	G	501	1	15,15,16	9.27	5 (33%)	20,22,23	1.68	3 (15%)

In the following table, the Chirals column lists the number of chiral outliers, the number of chiral centers analysed, the number of these observed in the model and the number defined in the Chemical Component Dictionary. Similar counts are reported in the Torsion and Rings columns. '-' means no outliers of that kind were identified.

Mol	Type	Chain	Res	Link	Chirals	Torsions	Rings
2	PLP	A	602	1	-	0/6/6/8	0/1/1/1
3	2KT	A	601	-	-	5/6/6/6	-
2	PLP	G	501	1	-	0/6/6/8	0/1/1/1

All (9) bond length outliers are listed below:

Mol	Chain	Res	Type	Atoms	Z	Observed(Å)	Ideal(Å)
2	A	602	PLP	C3-C2	-25.96	1.14	1.40
2	G	501	PLP	C3-C2	-25.94	1.15	1.40
2	G	501	PLP	C5-C4	-22.71	1.15	1.40
2	A	602	PLP	C5-C4	-22.57	1.15	1.40
2	A	602	PLP	C6-N1	7.80	1.50	1.34
2	G	501	PLP	C6-N1	7.68	1.50	1.34
2	A	602	PLP	C3-C4	5.05	1.50	1.40
2	G	501	PLP	C3-C4	4.88	1.50	1.40
2	G	501	PLP	C2A-C2	2.43	1.54	1.50

All (8) bond angle outliers are listed below:

Mol	Chain	Res	Type	Atoms	Z	Observed(°)	Ideal(°)
2	G	501	PLP	C5-C6-N1	-4.50	116.32	123.82
2	A	602	PLP	C5-C6-N1	-4.37	116.55	123.82
2	A	602	PLP	C3-C4-C5	3.78	122.83	118.74
2	G	501	PLP	C3-C4-C5	3.60	122.63	118.74
2	G	501	PLP	C4-C3-C2	3.05	124.58	120.07
2	A	602	PLP	C4-C3-C2	2.98	124.47	120.07
3	A	601	2KT	OXT-C-C2	2.36	120.43	113.97
3	A	601	2KT	O-C-C2	-2.32	118.63	121.72

There are no chirality outliers.

All (5) torsion outliers are listed below:

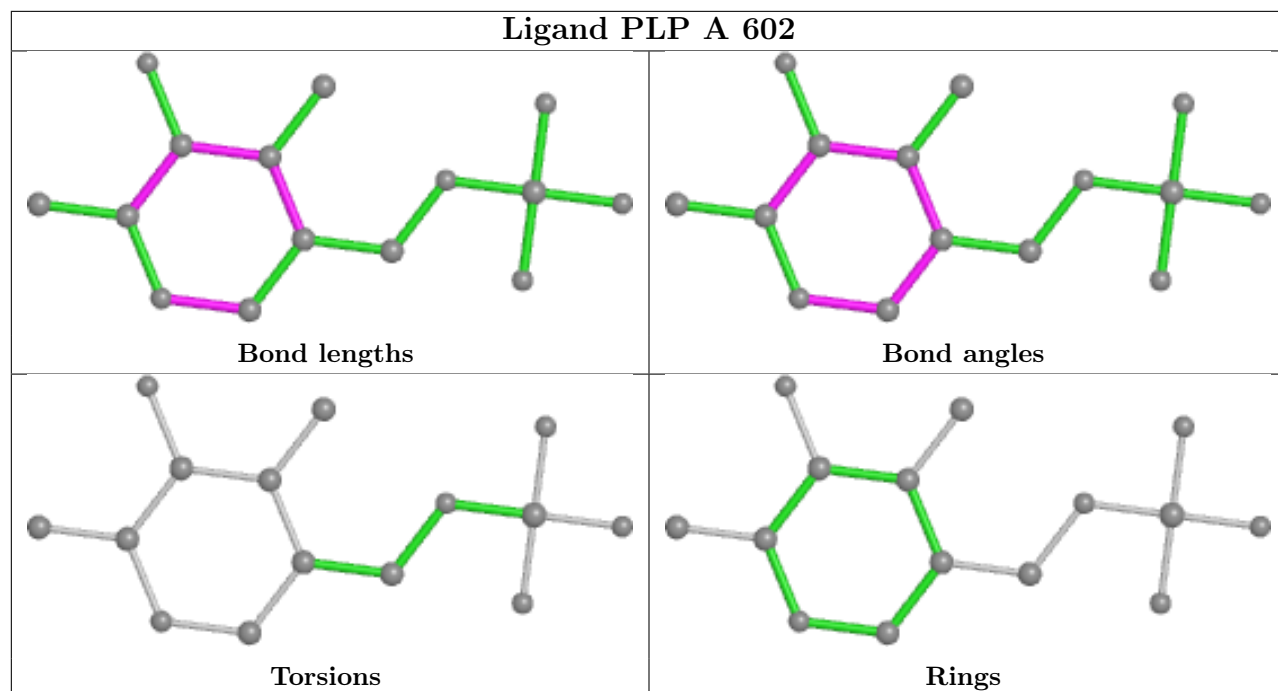
Mol	Chain	Res	Type	Atoms
3	A	601	2KT	OXT-C-C2-C3
3	A	601	2KT	O-C-C2-C3
3	A	601	2KT	O-C-C2-O3
3	A	601	2KT	O3-C2-C3-C4
3	A	601	2KT	C-C2-C3-C4

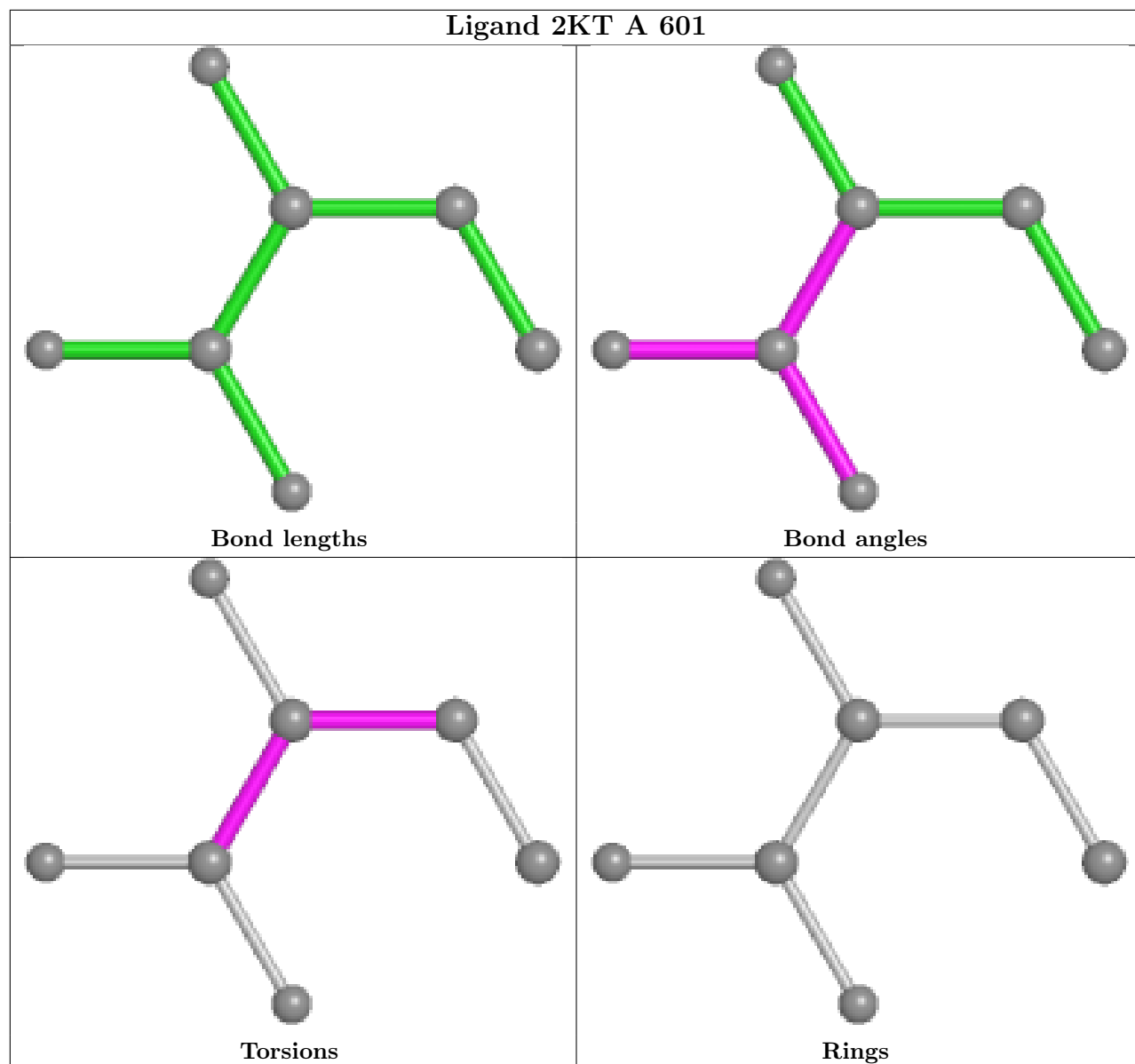
There are no ring outliers.

1 monomer is involved in 4 short contacts:

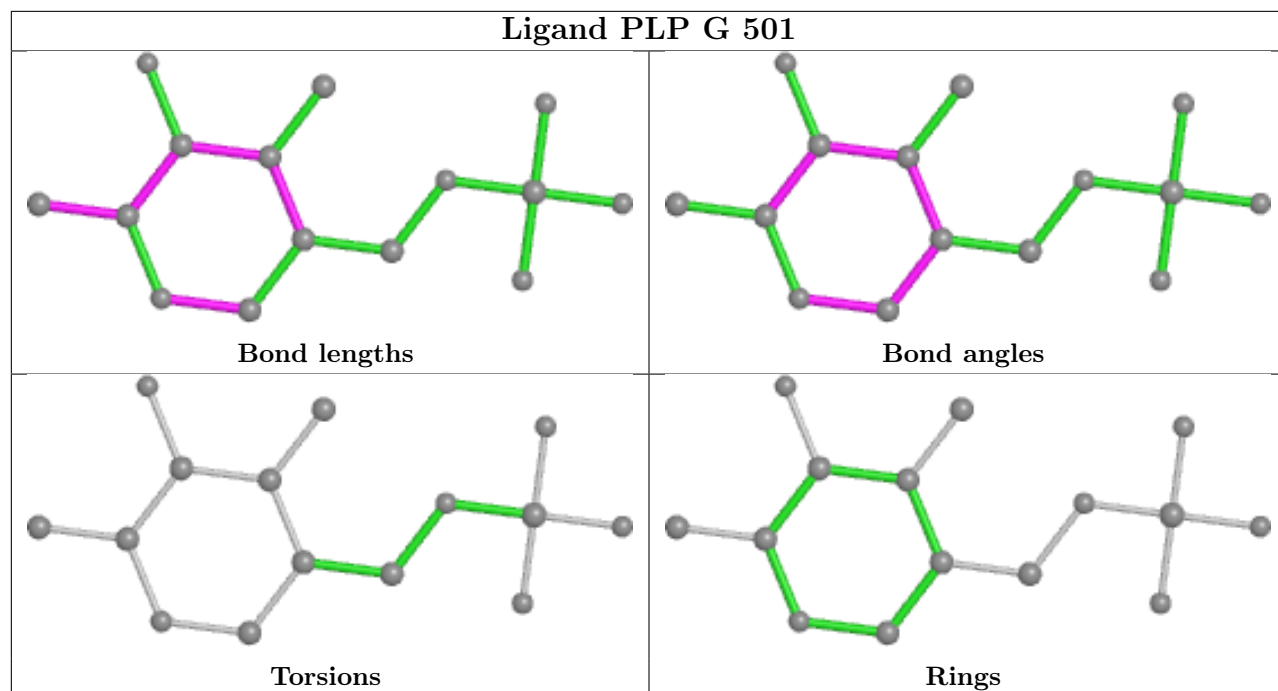
Mol	Chain	Res	Type	Clashes	Symm-Clashes
3	A	601	2KT	4	0

The following is a two-dimensional graphical depiction of Mogul quality analysis of bond lengths, bond angles, torsion angles, and ring geometry for all instances of the Ligand of Interest. In addition, ligands with molecular weight > 250 and outliers as shown on the validation Tables will also be included. For torsion angles, if less than 5% of the Mogul distribution of torsion angles is within 10 degrees of the torsion angle in question, then that torsion angle is considered an outlier. Any bond that is central to one or more torsion angles identified as an outlier by Mogul will be highlighted in the graph. For rings, the root-mean-square deviation (RMSD) between the ring in question and similar rings identified by Mogul is calculated over all ring torsion angles. If the average RMSD is greater than 60 degrees and the minimal RMSD between the ring in question and any Mogul-identified rings is also greater than 60 degrees, then that ring is considered an outlier. The outliers are highlighted in purple. The color gray indicates Mogul did not find sufficient equivalents in the CSD to analyse the geometry.









## 5.7 Other polymers [i](#)

There are no such residues in this entry.

## 5.8 Polymer linkage issues [i](#)

There are no chain breaks in this entry.

## 6 Fit of model and data [i](#)

### 6.1 Protein, DNA and RNA chains [i](#)

In the following table, the column labelled '#RSRZ > 2' contains the number (and percentage) of RSRZ outliers, followed by percent RSRZ outliers for the chain as percentile scores relative to all X-ray entries and entries of similar resolution. The OWAB column contains the minimum, median, 95<sup>th</sup> percentile and maximum values of the occupancy-weighted average B-factor per residue. The column labelled 'Q < 0.9' lists the number of (and percentage) of residues with an average occupancy less than 0.9.

Mol	Chain	Analysed	<RSRZ>	#RSRZ>2	OWAB(Å <sup>2</sup> )	Q<0.9
1	A	393/417 (94%)	1.46	78 (19%) <b>1</b> <b>1</b>	11, 20, 49, 142	0
1	G	389/417 (93%)	1.30	65 (16%) <b>1</b> <b>1</b>	12, 22, 47, 102	0
All	All	782/834 (93%)	1.38	143 (18%) <b>1</b> <b>1</b>	11, 21, 48, 142	0

All (143) RSRZ outliers are listed below:

Mol	Chain	Res	Type	RSRZ
1	G	387	VAL	11.1
1	A	385	LEU	10.9
1	A	374	PHE	10.2
1	A	387	VAL	10.0
1	A	386	LYS	9.1
1	A	381	ARG	9.0
1	A	380	LEU	8.8
1	A	382	GLU	8.5
1	A	379	MET	8.4
1	A	391	ASP	8.3
1	A	372	ALA	8.0
1	A	373	VAL	7.4
1	A	389	ILE	7.1
1	A	378	ASN	7.1
1	G	142	LEU	7.1
1	G	373	VAL	6.9
1	G	24	ALA	6.2
1	A	383	ASP	6.0
1	G	383	ASP	5.8
1	A	388	GLY	5.7
1	G	131	CYS	5.2
1	A	71	TYR	5.1
1	G	389	ILE	5.1
1	G	385	LEU	5.0

*Continued on next page...*

*Continued from previous page...*

Mol	Chain	Res	Type	RSRZ
1	G	388	GLY	5.0
1	A	275	LEU	5.0
1	G	382	GLU	4.8
1	A	168	PRO	4.8
1	A	341	THR	4.7
1	G	141	ARG	4.4
1	G	392	GLY	4.4
1	G	322	LEU	4.3
1	G	71	TYR	4.2
1	G	384	ARG	3.9
1	A	44	VAL	3.9
1	G	348	MET	3.9
1	G	340	GLY	3.9
1	A	55	PRO	3.9
1	G	96	ILE	3.8
1	G	386	LYS	3.8
1	A	302[A]	HIS	3.7
1	G	305	GLU	3.6
1	A	68	VAL	3.6
1	A	390	THR	3.6
1	A	392	GLY	3.6
1	G	302[A]	HIS	3.5
1	A	153	PHE	3.5
1	G	121	ALA	3.5
1	A	384	ARG	3.3
1	G	393	PHE	3.3
1	A	163	GLU	3.3
1	G	22	VAL	3.2
1	A	393	PHE	3.2
1	G	115	ILE	3.2
1	A	261	MET	3.1
1	A	274	LEU	3.1
1	A	346	ARG	3.1
1	G	391	ASP	3.0
1	A	43	GLY	3.0
1	G	417	ALA	3.0
1	G	73	SER	3.0
1	A	22	VAL	3.0
1	G	261	MET	2.9
1	G	344	GLY	2.9
1	A	184	TYR	2.9
1	A	33	PRO	2.9

*Continued on next page...*

*Continued from previous page...*

<b>Mol</b>	<b>Chain</b>	<b>Res</b>	<b>Type</b>	<b>RSRZ</b>
1	G	337	VAL	2.8
1	G	28	LEU	2.8
1	G	25	GLY	2.8
1	A	371	PRO	2.8
1	G	49	LEU	2.8
1	A	255	PHE	2.8
1	G	69	GLU	2.7
1	A	260	VAL	2.7
1	G	201	LEU	2.7
1	A	339	GLY	2.7
1	G	168	PRO	2.7
1	A	370	CYS	2.7
1	G	372	ALA	2.7
1	A	225	VAL	2.6
1	G	138	ARG	2.6
1	A	368	ILE	2.6
1	G	55	PRO	2.6
1	A	193	GLN	2.6
1	A	141	ARG	2.6
1	A	195	CYS	2.6
1	G	179	CYS	2.5
1	G	164	LYS	2.5
1	A	27	TRP	2.5
1	G	137	ASN	2.5
1	G	72	LEU	2.5
1	G	381	ARG	2.5
1	A	132	SER	2.5
1	A	69	GLU	2.5
1	A	166	ILE	2.5
1	A	165	ALA	2.5
1	A	256	PHE	2.4
1	G	191	ILE	2.4
1	A	167	ARG	2.4
1	A	198	LYS	2.4
1	G	153	PHE	2.4
1	A	31	PHE	2.4
1	A	348	MET	2.4
1	A	130	ASN	2.4
1	G	342	GLU	2.4
1	A	249	GLU	2.4
1	G	135	GLY	2.4
1	A	122	PRO	2.4

*Continued on next page...*

*Continued from previous page...*

Mol	Chain	Res	Type	RSRZ
1	A	359	GLU	2.3
1	A	67	SER	2.3
1	A	182	THR	2.3
1	A	74	LYS	2.3
1	G	133	TYR	2.3
1	A	188	ILE	2.3
1	A	181	PRO	2.2
1	G	368	ILE	2.2
1	G	275	LEU	2.2
1	G	151	PHE	2.2
1	G	303	LYS	2.2
1	G	406	LEU	2.2
1	G	306	HIS	2.2
1	G	300	LYS	2.2
1	G	183	LEU	2.2
1	A	369	THR	2.2
1	G	136	THR	2.2
1	A	151	PHE	2.2
1	G	260	VAL	2.1
1	G	341	THR	2.1
1	A	137	ASN	2.1
1	A	76	PHE	2.1
1	G	345	ILE	2.1
1	G	150	ASP	2.1
1	A	398	VAL	2.1
1	A	208	PHE	2.0
1	A	25	GLY	2.0
1	A	127	LEU	2.0
1	A	142	LEU	2.0
1	A	312	ILE	2.0
1	A	139	CYS	2.0
1	G	390	THR	2.0
1	A	337	VAL	2.0
1	G	370	CYS	2.0
1	A	138	ARG	2.0

## 6.2 Non-standard residues in protein, DNA, RNA chains

There are no non-standard protein/DNA/RNA residues in this entry.

### 6.3 Carbohydrates [i](#)

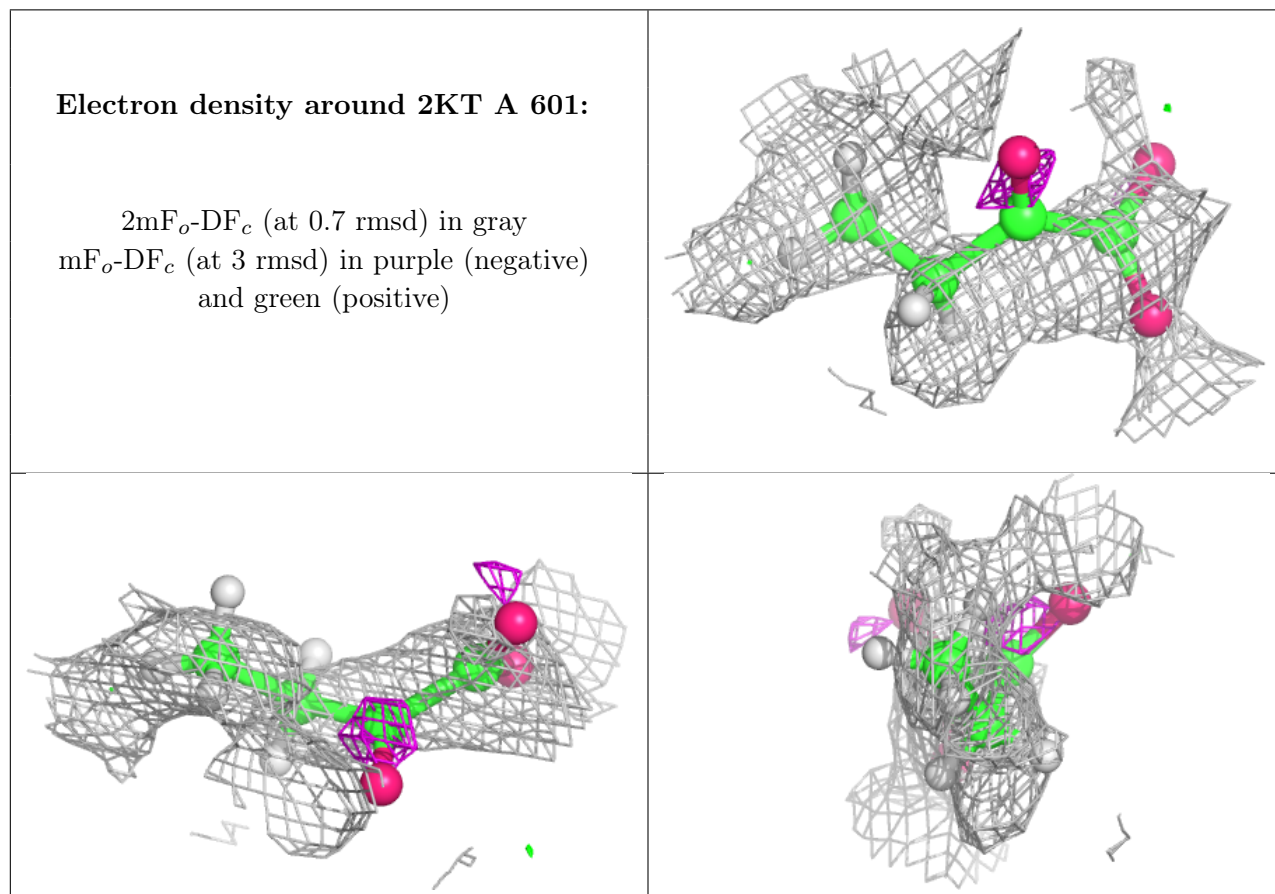
There are no monosaccharides in this entry.

### 6.4 Ligands [i](#)

In the following table, the Atoms column lists the number of modelled atoms in the group and the number defined in the chemical component dictionary. The B-factors column lists the minimum, median, 95<sup>th</sup> percentile and maximum values of B factors of atoms in the group. The column labelled 'Q< 0.9' lists the number of atoms with occupancy less than 0.9.

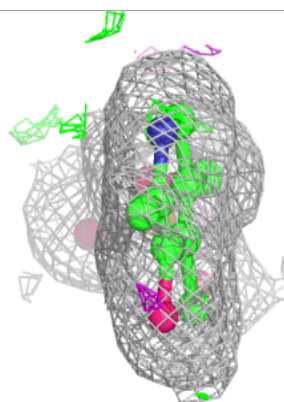
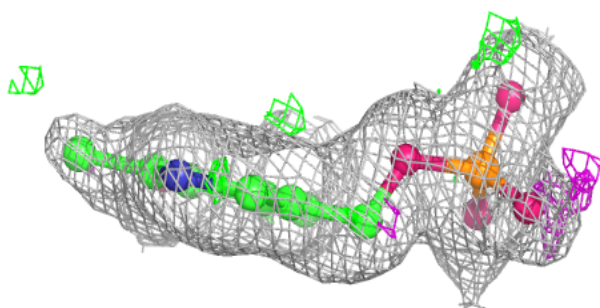
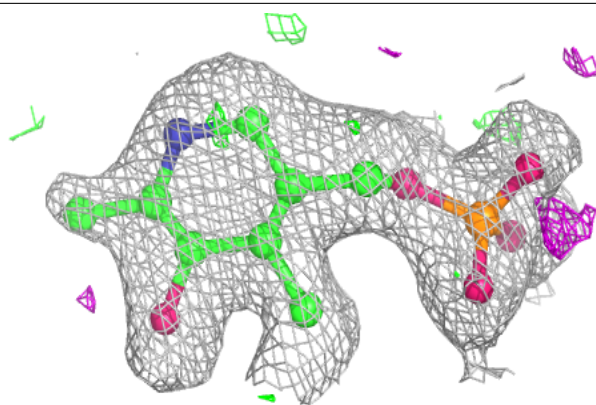
Mol	Type	Chain	Res	Atoms	RSCC	RSR	B-factors(Å <sup>2</sup> )	Q<0.9
3	2KT	A	601	7/7	0.35	0.48	33,39,45,45	0
2	PLP	A	602	15/16	0.90	0.15	14,19,25,25	0
2	PLP	G	501	15/16	0.93	0.15	13,22,27,28	0

The following is a graphical depiction of the model fit to experimental electron density of all instances of the Ligand of Interest. In addition, ligands with molecular weight > 250 and outliers as shown on the geometry validation Tables will also be included. Each fit is shown from different orientation to approximate a three-dimensional view.

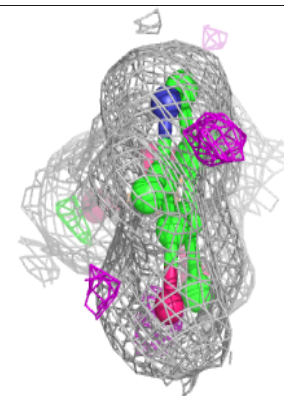
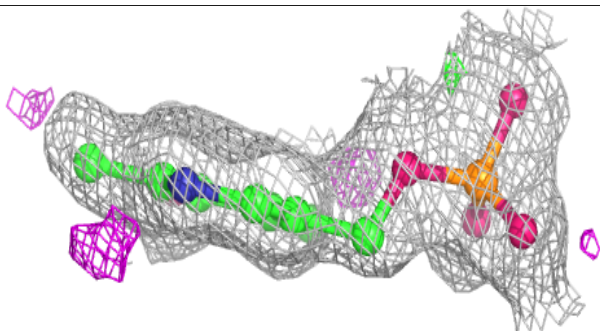
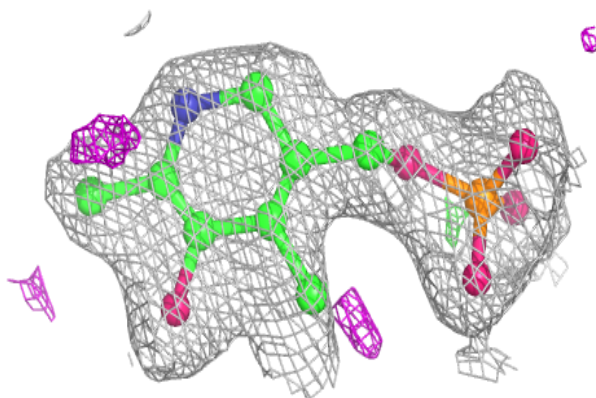


**Electron density around PLP A 602:**

$2mF_o-DF_c$  (at 0.7 rmsd) in gray  
 $mF_o-DF_c$  (at 3 rmsd) in purple (negative)  
and green (positive)

**Electron density around PLP G 501:**

$2mF_o-DF_c$  (at 0.7 rmsd) in gray  
 $mF_o-DF_c$  (at 3 rmsd) in purple (negative)  
and green (positive)



## 6.5 Other polymers [i](#)

There are no such residues in this entry.