



Full wwPDB X-ray Structure Validation Report ⓘ

Sep 26, 2023 – 07:14 AM EDT

PDB ID : 6BL4
Title : Crystal Complex of Cyclooxygenase-2 with indomethacin-ethylenediamine-dansyl conjugate
Authors : Xu, S.; Uddin, M.J.; Banerjee, S.; Marnett, L.J.
Deposited on : 2017-11-09
Resolution : 2.22 Å(reported)

This is a Full wwPDB X-ray Structure Validation Report for a publicly released PDB entry.

We welcome your comments at validation@mail.wwpdb.org

A user guide is available at

<https://www.wwpdb.org/validation/2017/XrayValidationReportHelp>

with specific help available everywhere you see the ⓘ symbol.

The types of validation reports are described at

<http://www.wwpdb.org/validation/2017/FAQs#types>.

The following versions of software and data (see [references ⓘ](#)) were used in the production of this report:

MolProbity : 4.02b-467
Mogul : 1.8.5 (274361), CSD as541be (2020)
Xtrriage (Phenix) : 1.13
EDS : 2.35.1
buster-report : 1.1.7 (2018)
Percentile statistics : 20191225.v01 (using entries in the PDB archive December 25th 2019)
Refmac : 5.8.0158
CCP4 : 7.0.044 (Gargrove)
Ideal geometry (proteins) : Engh & Huber (2001)
Ideal geometry (DNA, RNA) : Parkinson et al. (1996)
Validation Pipeline (wwPDB-VP) : 2.35.1

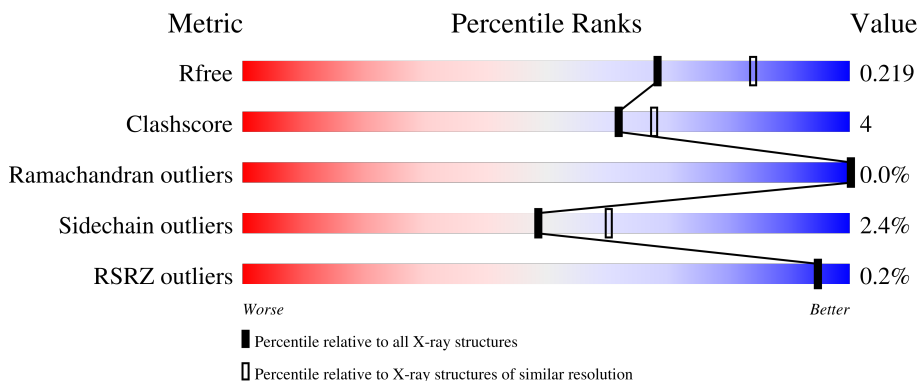
1 Overall quality at a glance i

The following experimental techniques were used to determine the structure:

X-RAY DIFFRACTION

The reported resolution of this entry is 2.22 Å.

Percentile scores (ranging between 0-100) for global validation metrics of the entry are shown in the following graphic. The table shows the number of entries on which the scores are based.






Metric	Whole archive (#Entries)	Similar resolution (#Entries, resolution range(Å))
R_{free}	130704	5912 (2.24-2.20)
Clashscore	141614	6646 (2.24-2.20)
Ramachandran outliers	138981	6543 (2.24-2.20)
Sidechain outliers	138945	6544 (2.24-2.20)
RSRZ outliers	127900	5797 (2.24-2.20)

The table below summarises the geometric issues observed across the polymeric chains and their fit to the electron density. The red, orange, yellow and green segments of the lower bar indicate the fraction of residues that contain outliers for ≥ 3 , 2, 1 and 0 types of geometric quality criteria respectively. A grey segment represents the fraction of residues that are not modelled. The numeric value for each fraction is indicated below the corresponding segment, with a dot representing fractions $\leq 5\%$. The upper red bar (where present) indicates the fraction of residues that have poor fit to the electron density. The numeric value is given above the bar.

Mol	Chain	Length	Quality of chain
1	A	587	 85% 9% • 6%
1	B	587	 86% 8% 6%
1	C	587	 84% 9% • 6%
1	D	587	 84% 9% • 6%
2	E	2	 50% 50%

Continued on next page...

Continued from previous page...

Mol	Chain	Length	Quality of chain
2	F	2	 100%
2	G	2	 100%
2	H	2	 100%

2 Entry composition [i](#)

There are 7 unique types of molecules in this entry. The entry contains 20002 atoms, of which 0 are hydrogens and 0 are deuteriums.

In the tables below, the ZeroOcc column contains the number of atoms modelled with zero occupancy, the AltConf column contains the number of residues with at least one atom in alternate conformation and the Trace column contains the number of residues modelled with at most 2 atoms.

- Molecule 1 is a protein called Prostaglandin G/H synthase 2.

Mol	Chain	Residues	Atoms					ZeroOcc	AltConf	Trace
			Total	C	N	O	S			
1	A	552	4474	2885	750	814	25	0	0	0
1	B	552	4474	2885	750	814	25	0	0	0
1	C	552	4474	2885	750	814	25	0	0	0
1	D	552	4474	2885	750	814	25	0	0	0

- Molecule 2 is an oligosaccharide called 2-acetamido-2-deoxy-beta-D-glucopyranose-(1-4)-2-acetamido-2-deoxy-beta-D-glucopyranose.



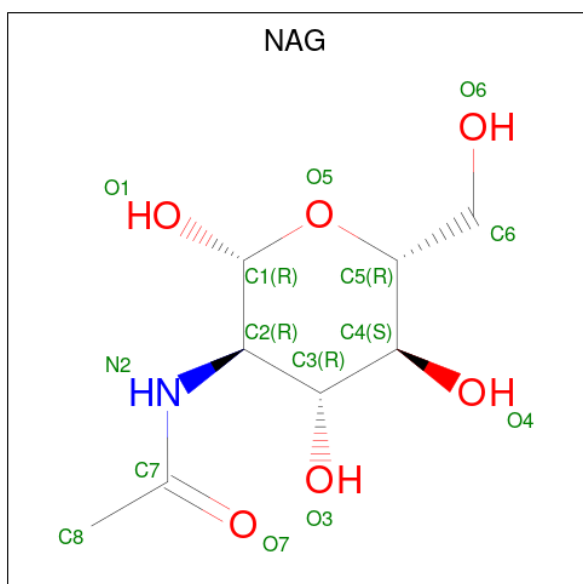
Mol	Chain	Residues	Atoms				ZeroOcc	AltConf	Trace
			Total	C	N	O			
2	E	2	28	16	2	10	0	0	0
2	F	2	28	16	2	10	0	0	0
2	G	2	28	16	2	10	0	0	0
2	H	2	28	16	2	10	0	0	0

- Molecule 3 is PROTOPORPHYRIN IX CONTAINING FE (three-letter code: HEM) (formula: C₃₄H₃₂FeN₄O₄).



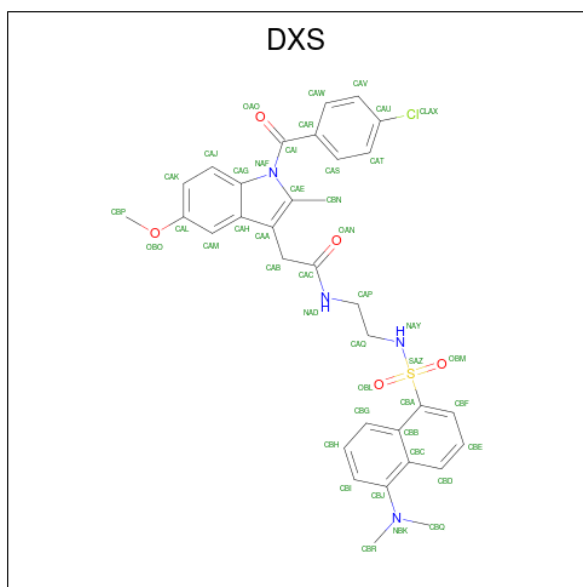
Mol	Chain	Residues	Atoms				ZeroOcc	AltConf	
			Total	C	Fe	N			O
3	A	1	Total 43	C 34	Fe 1	N 4	O 4	0	0
3	B	1	Total 43	C 34	Fe 1	N 4	O 4	0	0
3	C	1	Total 43	C 34	Fe 1	N 4	O 4	0	0
3	D	1	Total 43	C 34	Fe 1	N 4	O 4	0	0

- Molecule 4 is 2-acetamido-2-deoxy-beta-D-glucopyranose (three-letter code: NAG) (formula: $C_8H_{15}NO_6$).



Mol	Chain	Residues	Atoms				ZeroOcc	AltConf
4	A	1	Total	C	N	O	0	0
			14	8	1	5		
4	A	1	Total	C	N	O	0	0
			14	8	1	5		
4	B	1	Total	C	N	O	0	0
			14	8	1	5		
4	B	1	Total	C	N	O	0	0
			14	8	1	5		
4	C	1	Total	C	N	O	0	0
			14	8	1	5		
4	C	1	Total	C	N	O	0	0
			14	8	1	5		
4	D	1	Total	C	N	O	0	0
			14	8	1	5		
4	D	1	Total	C	N	O	0	0
			14	8	1	5		

- Molecule 5 is 2-[1-(4-chlorobenzene-1-carbonyl)-5-methoxy-2-methyl-1H-indol-3-yl]-N-[2-({[5-(dimethylamino)naphthalen-1-yl]sulfonyl}amino)ethyl]acetamide (three-letter code: DXS) (formula: C₃₃H₃₃ClN₄O₅S).



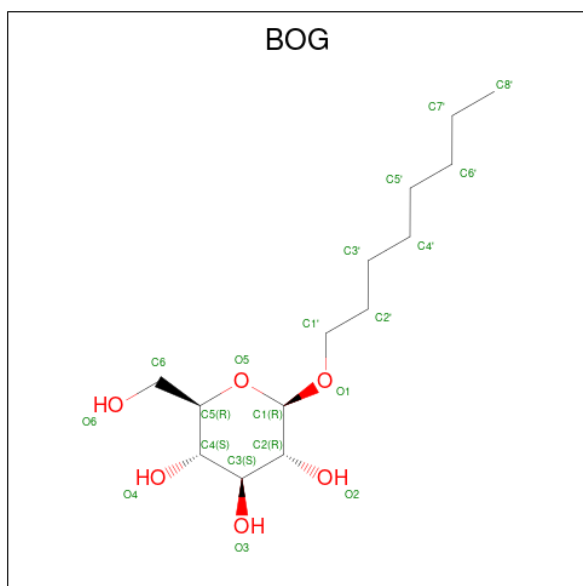
Mol	Chain	Residues	Atoms					ZeroOcc	AltConf	
5	A	1	Total	C	Cl	N	O	S	0	0
			44	33	1	4	5	1		
5	B	1	Total	C	Cl	N	O	S	0	0
			44	33	1	4	5	1		
5	C	1	Total	C	Cl	N	O	S	0	0
			44	33	1	4	5	1		

Continued on next page...

Continued from previous page...

Mol	Chain	Residues	Atoms					ZeroOcc	AltConf	
			Total	C	Cl	N	O			S
5	D	1	44	33	1	4	5	1	0	0

- Molecule 6 is octyl beta-D-glucopyranoside (three-letter code: BOG) (formula: C₁₄H₂₈O₆).



Mol	Chain	Residues	Atoms		ZeroOcc	AltConf
			Total	O		
6	A	1	20	6	0	0
6	A	1	20	6	0	0
6	C	1	20	6	0	0
6	D	1	20	6	0	0
6	D	1	20	6	0	0

- Molecule 7 is water.

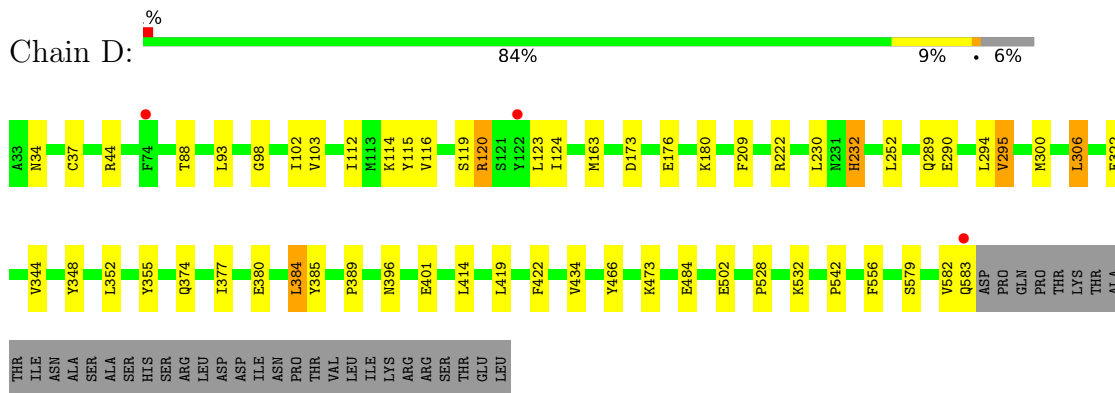
Mol	Chain	Residues	Atoms		ZeroOcc	AltConf
			Total	O		
7	A	395	395	395	0	0
7	B	324	324	324	0	0
7	C	373	373	373	0	0

Continued on next page...

Continued from previous page...

Mol	Chain	Residues	Atoms		ZeroOcc	AltConf
7	D	342	Total 342	O 342	0	0

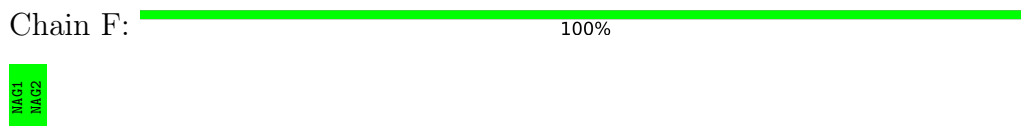
- Molecule 1: Prostaglandin G/H synthase 2



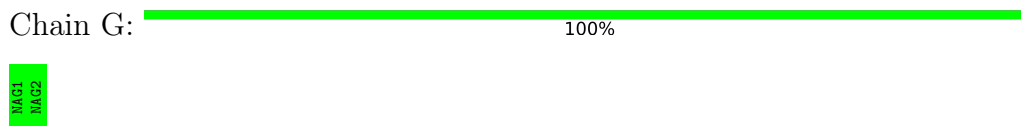
- Molecule 2: 2-acetamido-2-deoxy-beta-D-glucopyranose-(1-4)-2-acetamido-2-deoxy-beta-D-glucopyranose



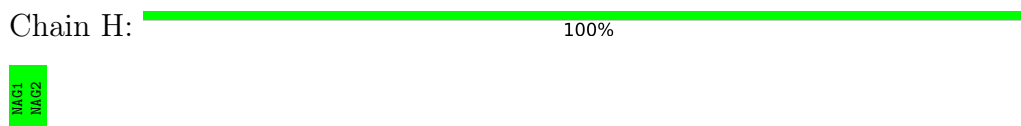
- Molecule 2: 2-acetamido-2-deoxy-beta-D-glucopyranose-(1-4)-2-acetamido-2-deoxy-beta-D-glucopyranose



- Molecule 2: 2-acetamido-2-deoxy-beta-D-glucopyranose-(1-4)-2-acetamido-2-deoxy-beta-D-glucopyranose



- Molecule 2: 2-acetamido-2-deoxy-beta-D-glucopyranose-(1-4)-2-acetamido-2-deoxy-beta-D-glucopyranose



4 Data and refinement statistics i

Property	Value	Source
Space group	C 1 2 1	Depositor
Cell constants a, b, c, α , β , γ	214.79Å 120.41Å 134.42Å 90.00° 123.60° 90.00°	Depositor
Resolution (Å)	111.96 – 2.22 111.96 – 2.22	Depositor EDS
% Data completeness (in resolution range)	98.5 (111.96-2.22) 90.0 (111.96-2.22)	Depositor EDS
R_{merge}	0.11	Depositor
R_{sym}	(Not available)	Depositor
$\langle I/\sigma(I) \rangle$ ¹	1.43 (at 2.22Å)	Xtrriage
Refinement program	PHENIX 1.12_2829	Depositor
R, R_{free}	0.189 , 0.220 0.188 , 0.219	Depositor DCC
R_{free} test set	4150 reflections (3.00%)	wwPDB-VP
Wilson B-factor (Å ²)	24.5	Xtrriage
Anisotropy	0.449	Xtrriage
Bulk solvent k_{sol} (e/Å ³), B_{sol} (Å ²)	0.33 , 42.3	EDS
L-test for twinning ²	$\langle L \rangle = 0.47$, $\langle L^2 \rangle = 0.30$	Xtrriage
Estimated twinning fraction	0.014 for 1/2*h-3/2*k,-1/2*h-1/2*k,-1/2*h +1/2*k-1 0.018 for 1/2*h+3/2*k,1/2*h-1/2*k,-1/2*h- 1/2*k-1	Xtrriage
F_o, F_c correlation	0.94	EDS
Total number of atoms	20002	wwPDB-VP
Average B, all atoms (Å ²)	35.0	wwPDB-VP

Xtrriage's analysis on translational NCS is as follows: *The largest off-origin peak in the Patterson function is 3.59% of the height of the origin peak. No significant pseudotranslation is detected.*

¹Intensities estimated from amplitudes.

²Theoretical values of $\langle |L| \rangle$, $\langle L^2 \rangle$ for acentric reflections are 0.5, 0.333 respectively for untwinned datasets, and 0.375, 0.2 for perfectly twinned datasets.

5 Model quality

5.1 Standard geometry

Bond lengths and bond angles in the following residue types are not validated in this section: BOG, DXS, HEM, NAG

The Z score for a bond length (or angle) is the number of standard deviations the observed value is removed from the expected value. A bond length (or angle) with $|Z| > 5$ is considered an outlier worth inspection. RMSZ is the root-mean-square of all Z scores of the bond lengths (or angles).

Mol	Chain	Bond lengths		Bond angles	
		RMSZ	# Z >5	RMSZ	# Z >5
1	A	0.34	0/4601	0.52	0/6239
1	B	0.35	0/4601	0.53	1/6239 (0.0%)
1	C	0.36	0/4601	0.53	2/6239 (0.0%)
1	D	0.37	2/4601 (0.0%)	0.51	1/6239 (0.0%)
All	All	0.36	2/18404 (0.0%)	0.52	4/24956 (0.0%)

All (2) bond length outliers are listed below:

Mol	Chain	Res	Type	Atoms	Z	Observed(Å)	Ideal(Å)
1	D	322	GLU	CD-OE2	-5.83	1.19	1.25
1	D	322	GLU	CD-OE1	-5.29	1.19	1.25

All (4) bond angle outliers are listed below:

Mol	Chain	Res	Type	Atoms	Z	Observed(°)	Ideal(°)
1	C	294	LEU	CA-CB-CG	6.34	129.89	115.30
1	B	120	ARG	NE-CZ-NH2	-5.93	117.34	120.30
1	D	384	LEU	CB-CG-CD2	-5.51	101.64	111.00
1	C	294	LEU	CB-CG-CD2	5.21	119.85	111.00

There are no chirality outliers.

There are no planarity outliers.

5.2 Too-close contacts

In the following table, the Non-H and H(model) columns list the number of non-hydrogen atoms and hydrogen atoms in the chain respectively. The H(added) column lists the number of hydrogen atoms added and optimized by MolProbity. The Clashes column lists the number of clashes within the asymmetric unit, whereas Symm-Clashes lists symmetry-related clashes.

Mol	Chain	Non-H	H(model)	H(added)	Clashes	Symm-Clashes
1	A	4474	0	4373	37	0
1	B	4474	0	4373	34	0
1	C	4474	0	4373	37	0
1	D	4474	0	4373	39	0
2	E	28	0	25	0	0
2	F	28	0	25	0	0
2	G	28	0	25	0	0
2	H	28	0	25	0	0
3	A	43	0	30	2	0
3	B	43	0	30	2	0
3	C	43	0	30	5	0
3	D	43	0	30	1	0
4	A	28	0	26	0	0
4	B	28	0	26	0	0
4	C	28	0	26	0	0
4	D	28	0	26	0	0
5	A	44	0	0	2	0
5	B	44	0	0	3	0
5	C	44	0	0	3	0
5	D	44	0	0	3	0
6	A	40	0	55	2	0
6	C	20	0	28	3	0
6	D	40	0	56	1	0
7	A	395	0	0	4	0
7	B	324	0	0	3	0
7	C	373	0	0	9	0
7	D	342	0	0	4	0
All	All	20002	0	17955	162	0

The all-atom clashscore is defined as the number of clashes found per 1000 atoms (including hydrogen atoms). The all-atom clashscore for this structure is 4.

All (162) close contacts within the same asymmetric unit are listed below, sorted by their clash magnitude.

Atom-1	Atom-2	Interatomic distance (Å)	Clash overlap (Å)
1:A:120:ARG:HB3	1:A:120:ARG:HH11	1.07	1.12
1:D:120:ARG:HH11	1:D:120:ARG:HB3	1.21	1.04
1:C:120:ARG:O	1:C:122:TYR:N	1.94	1.01
1:D:120:ARG:HB3	1:D:120:ARG:NH1	1.78	0.98
1:B:120:ARG:HH11	1:B:120:ARG:HB3	1.30	0.96
1:D:116:VAL:O	1:D:120:ARG:HD3	1.63	0.96
1:A:120:ARG:HB3	1:A:120:ARG:NH1	1.80	0.95

Continued on next page...

Continued from previous page...

Atom-1	Atom-2	Interatomic distance (Å)	Clash overlap (Å)
1:B:120:ARG:HH11	1:B:120:ARG:CB	1.92	0.82
1:C:445:GLN:OE1	7:C:801:HOH:O	2.02	0.77
1:B:120:ARG:HB3	1:B:120:ARG:NH1	2.00	0.76
3:C:701:HEM:HHC	3:C:701:HEM:HBB2	1.67	0.76
3:B:701:HEM:HHC	3:B:701:HEM:HBB2	1.68	0.75
1:C:384:LEU:HD22	1:C:507:LEU:HD11	1.68	0.74
1:B:180:LYS:HB3	1:B:490:GLU:HG2	1.70	0.73
1:A:120:ARG:HD2	1:A:120:ARG:H	1.55	0.71
1:D:119:SER:OG	1:D:120:ARG:HD2	1.90	0.70
1:B:120:ARG:HH11	1:B:120:ARG:CG	2.05	0.70
3:C:701:HEM:HBC2	3:C:701:HEM:HHD	1.75	0.69
6:C:707:BOG:H8'2	6:C:707:BOG:H4'1	1.82	0.61
1:C:384:LEU:CD2	1:C:507:LEU:HD11	2.31	0.60
1:D:114:LYS:NZ	7:D:807:HOH:O	2.34	0.60
3:A:701:HEM:HBB2	3:A:701:HEM:HHC	1.84	0.59
1:A:222:ARG:NE	7:A:803:HOH:O	2.24	0.59
3:D:701:HEM:HBB2	3:D:701:HEM:HHC	1.85	0.59
7:C:928:HOH:O	1:D:542:PRO:HD2	2.01	0.59
1:C:384:LEU:HD22	1:C:507:LEU:CD1	2.33	0.58
1:A:120:ARG:HD2	1:A:120:ARG:N	2.18	0.57
3:C:701:HEM:HBB2	3:C:701:HEM:CHC	2.29	0.57
1:D:44:ARG:HD3	7:D:1084:HOH:O	2.03	0.57
1:B:180:LYS:HD3	1:B:490:GLU:HG3	1.88	0.56
5:C:706:DXS:CBR	5:C:706:DXS:CBD	2.84	0.55
1:C:222:ARG:HH12	1:C:290:GLU:CD	2.09	0.55
1:A:454:GLN:HA	1:A:457:GLU:HB2	1.89	0.55
1:A:364:GLU:HG3	7:A:988:HOH:O	2.07	0.55
1:A:122:TYR:CE1	1:A:123:LEU:HD13	2.42	0.54
1:B:222:ARG:HH12	1:B:290:GLU:CD	2.10	0.54
1:C:300:MET:HG3	1:C:419:LEU:HD22	1.89	0.54
1:C:278:HIS:NE2	7:C:809:HOH:O	2.30	0.54
5:A:706:DXS:CBR	5:A:706:DXS:CBD	2.85	0.54
1:D:222:ARG:HH12	1:D:290:GLU:CD	2.10	0.54
1:B:120:ARG:O	1:B:121:SER:C	2.45	0.54
1:A:173:ASP:HB3	1:A:176:GLU:HB2	1.90	0.53
1:D:173:ASP:HB3	1:D:176:GLU:HB2	1.90	0.53
3:C:701:HEM:HHC	3:C:701:HEM:CBB	2.38	0.53
1:C:355:TYR:OH	5:C:706:DXS:NAD	2.42	0.53
1:D:115:TYR:O	1:D:119:SER:HB3	2.09	0.52
1:A:222:ARG:HH12	1:A:290:GLU:CD	2.13	0.52
1:A:344:VAL:HA	1:A:348:TYR:HB3	1.90	0.52

Continued on next page...

Continued from previous page...

Atom-1	Atom-2	Interatomic distance (Å)	Clash overlap (Å)
1:B:34:ASN:HB3	1:B:37:CYS:SG	2.49	0.52
1:B:175:LYS:O	1:B:179:GLU:HG3	2.08	0.52
1:B:485:LYS:HG3	7:B:983:HOH:O	2.08	0.52
5:D:706:DXS:CBQ	5:D:706:DXS:CBQ	2.85	0.52
1:A:120:ARG:H	1:A:120:ARG:CD	2.23	0.52
1:B:399:ASP:OD1	1:B:399:ASP:N	2.40	0.51
1:A:181:VAL:HG21	1:A:491:LEU:HD21	1.93	0.51
1:C:263:PRO:HG2	1:C:299:MET:HE1	1.93	0.50
1:C:230:LEU:HG	1:C:233:ILE:HD12	1.93	0.50
1:D:300:MET:HG3	1:D:419:LEU:HD22	1.94	0.50
1:C:34:ASN:HB3	1:C:37:CYS:SG	2.51	0.50
1:B:300:MET:HG3	1:B:419:LEU:HD22	1.92	0.50
1:C:91:TYR:CD2	6:C:707:BOG:H5'2	2.48	0.49
1:B:222:ARG:NH1	1:B:290:GLU:OE2	2.44	0.49
1:C:122:TYR:CE1	1:C:123:LEU:HD13	2.48	0.49
1:C:428:ARG:HG3	7:C:831:HOH:O	2.12	0.49
1:B:115:TYR:O	1:B:119:SER:HB3	2.12	0.49
1:B:380:GLU:O	1:B:384:LEU:HG	2.12	0.49
1:A:34:ASN:HB3	1:A:37:CYS:SG	2.53	0.49
1:D:344:VAL:HA	1:D:348:TYR:HB3	1.94	0.48
1:C:87:ASN:HD22	6:C:707:BOG:H61	1.78	0.48
1:C:380:GLU:HG2	1:C:466:TYR:CE1	2.49	0.48
1:D:180:LYS:HE3	7:D:980:HOH:O	2.14	0.48
1:C:344:VAL:HA	1:C:348:TYR:HB3	1.96	0.48
1:D:124:ILE:HD11	1:D:528:PRO:HB2	1.96	0.48
5:A:706:DXS:CAJ	5:A:706:DXS:CAW	2.91	0.48
1:A:44:ARG:HG3	7:A:1110:HOH:O	2.13	0.47
1:B:263:PRO:HG2	1:B:299:MET:HE1	1.96	0.47
1:C:389:PRO:HB2	1:C:434:VAL:HA	1.95	0.47
1:B:414:LEU:HD11	1:B:419:LEU:HD23	1.95	0.47
1:D:582:VAL:O	1:D:583:GLN:HG3	2.14	0.47
1:B:344:VAL:HA	1:B:348:TYR:HB3	1.96	0.47
1:A:91:TYR:CD2	6:A:707:BOG:H4'2	2.50	0.47
1:C:526:GLY:HA3	5:C:706:DXS:CAT	2.44	0.47
1:D:103:VAL:HG11	1:D:112:ILE:HD12	1.97	0.47
1:D:389:PRO:HB2	1:D:434:VAL:HA	1.96	0.46
1:A:252:LEU:HB2	1:A:306:LEU:HD13	1.98	0.46
1:D:252:LEU:HB2	1:D:306:LEU:HD13	1.97	0.46
1:D:414:LEU:HD11	1:D:419:LEU:HD23	1.96	0.46
1:C:386:HIS:CE1	3:C:701:HEM:HAD2	2.51	0.46
1:D:98:GLY:O	1:D:102:ILE:HG12	2.15	0.46

Continued on next page...

Continued from previous page...

Atom-1	Atom-2	Interatomic distance (Å)	Clash overlap (Å)
1:A:380:GLU:O	1:A:384:LEU:HG	2.15	0.46
1:C:175:LYS:O	1:C:179:GLU:HG3	2.15	0.46
1:D:384:LEU:C	1:D:384:LEU:HD12	2.36	0.46
1:D:473:LYS:NZ	7:D:803:HOH:O	2.29	0.45
1:D:380:GLU:O	1:D:384:LEU:HG	2.17	0.45
1:A:87:ASN:HB2	6:A:707:BOG:H62	1.98	0.45
1:C:44:ARG:HG3	7:C:1121:HOH:O	2.14	0.45
1:B:120:ARG:NH1	1:B:120:ARG:CG	2.72	0.45
1:D:473:LYS:NZ	1:D:473:LYS:HB2	2.31	0.45
1:D:380:GLU:HG2	1:D:466:TYR:CE1	2.52	0.45
1:A:380:GLU:HG2	1:A:466:TYR:CE1	2.51	0.45
1:C:414:LEU:HD11	1:C:419:LEU:HD23	1.99	0.45
1:D:222:ARG:NH1	1:D:290:GLU:OE2	2.46	0.45
1:A:389:PRO:HB2	1:A:434:VAL:HA	1.98	0.44
1:B:473:LYS:HE2	7:B:1095:HOH:O	2.17	0.44
1:C:147:TYR:HB2	7:C:910:HOH:O	2.18	0.44
1:A:103:VAL:HG11	1:A:112:ILE:HD12	1.99	0.44
1:A:222:ARG:NH1	1:A:290:GLU:OE2	2.46	0.44
3:A:701:HEM:HHD	3:A:701:HEM:HBC2	1.99	0.44
1:B:114:LYS:HE3	1:B:365:LEU:O	2.18	0.44
1:C:97:LYS:NZ	7:C:816:HOH:O	2.37	0.44
1:B:363:PRO:HG2	1:B:545:TRP:CD2	2.53	0.44
1:A:108:LEU:HD12	1:A:108:LEU:HA	1.82	0.43
1:D:209:PHE:HB2	1:D:377:ILE:HG13	2.01	0.43
1:A:98:GLY:O	1:A:102:ILE:HG12	2.18	0.43
1:C:120:ARG:C	1:C:122:TYR:N	2.67	0.43
1:C:222:ARG:NH1	1:C:290:GLU:OE2	2.50	0.43
1:D:374:GLN:O	1:D:532:LYS:HE3	2.19	0.43
3:B:701:HEM:HBB2	3:B:701:HEM:CHC	2.40	0.43
1:C:274:ILE:HD12	1:C:291:VAL:HG12	1.99	0.43
1:C:364:GLU:HG3	7:C:824:HOH:O	2.19	0.43
1:A:473:LYS:HB2	1:A:473:LYS:NZ	2.34	0.43
1:D:352:LEU:HD23	1:D:352:LEU:HA	1.91	0.43
1:D:88:THR:HG23	6:D:707:BOG:H4'1	2.00	0.42
1:A:300:MET:HG3	1:A:419:LEU:HD22	2.01	0.42
1:D:294:LEU:HG	1:D:295:VAL:HG22	2.00	0.42
1:B:103:VAL:HG11	1:B:112:ILE:HD12	2.01	0.42
1:A:44:ARG:NH1	1:A:122:TYR:O	2.52	0.42
1:A:93:LEU:HD13	1:A:355:TYR:CZ	2.54	0.42
1:A:399:ASP:OD1	1:A:399:ASP:N	2.46	0.42
1:B:98:GLY:O	1:B:102:ILE:HG12	2.19	0.42

Continued on next page...

Continued from previous page...

Atom-1	Atom-2	Interatomic distance (Å)	Clash overlap (Å)
1:B:120:ARG:HH11	1:B:120:ARG:HG2	1.79	0.42
1:B:120:ARG:NH2	5:B:706:DXS:CAP	2.83	0.42
1:B:276:PRO:HD3	1:B:409:TYR:CD1	2.55	0.42
1:A:124:ILE:HD11	1:A:528:PRO:HB2	2.01	0.42
1:C:103:VAL:HG11	1:C:112:ILE:HD12	2.01	0.42
1:D:230:LEU:HA	1:D:232:HIS:CE1	2.55	0.42
1:B:414:LEU:HA	1:B:422:PHE:CE1	2.55	0.41
1:D:384:LEU:CD1	5:D:706:DXS:CLAX	3.05	0.41
1:B:473:LYS:HB2	1:B:473:LYS:NZ	2.35	0.41
1:B:147:TYR:HB2	7:B:876:HOH:O	2.19	0.41
1:C:123:LEU:HD12	1:C:123:LEU:HA	1.91	0.41
1:A:294:LEU:HA	1:A:409:TYR:CE1	2.54	0.41
1:C:173:ASP:HB3	1:C:176:GLU:HB2	2.02	0.41
1:A:400:GLN:O	7:A:801:HOH:O	2.22	0.41
1:C:108:LEU:HD12	1:C:108:LEU:HA	1.88	0.41
1:C:352:LEU:HD23	1:C:352:LEU:HA	1.95	0.41
1:B:115:TYR:HE2	5:B:706:DXS:CBA	2.34	0.41
1:C:374:GLN:O	1:C:532:LYS:HE3	2.20	0.41
1:D:384:LEU:HD13	5:D:706:DXS:CLAX	2.58	0.41
1:A:148:TYR:CE1	1:A:221:THR:HB	2.56	0.41
1:A:352:LEU:HA	1:A:352:LEU:HD23	1.88	0.41
1:D:34:ASN:HB3	1:D:37:CYS:SG	2.61	0.41
1:D:93:LEU:HD13	1:D:355:TYR:CZ	2.55	0.41
1:D:163:MET:CE	1:D:502:GLU:HG2	2.50	0.41
1:D:396:ASN:OD1	1:D:401:GLU:HG2	2.21	0.41
1:A:352:LEU:HD22	1:A:518:PHE:CE2	2.56	0.40
1:B:352:LEU:HD23	1:B:352:LEU:HA	1.93	0.40
1:B:389:PRO:HB2	1:B:434:VAL:HA	2.03	0.40
5:B:706:DXS:CBG	5:B:706:DXS:NAY	2.83	0.40
1:A:294:LEU:HA	1:A:409:TYR:CD1	2.57	0.40
1:D:163:MET:HE3	1:D:502:GLU:HG2	2.02	0.40
1:C:457:GLU:OE1	7:C:802:HOH:O	2.22	0.40

There are no symmetry-related clashes.

5.3 Torsion angles [i](#)

5.3.1 Protein backbone [i](#)

In the following table, the Percentiles column shows the percent Ramachandran outliers of the chain as a percentile score with respect to all X-ray entries followed by that with respect to entries

of similar resolution.

The Analysed column shows the number of residues for which the backbone conformation was analysed, and the total number of residues.

Mol	Chain	Analysed	Favoured	Allowed	Outliers	Percentiles	
1	A	550/587 (94%)	536 (98%)	14 (2%)	0	100	100
1	B	550/587 (94%)	536 (98%)	14 (2%)	0	100	100
1	C	550/587 (94%)	533 (97%)	16 (3%)	1 (0%)	47	54
1	D	550/587 (94%)	536 (98%)	14 (2%)	0	100	100
All	All	2200/2348 (94%)	2141 (97%)	58 (3%)	1 (0%)	100	100

All (1) Ramachandran outliers are listed below:

Mol	Chain	Res	Type
1	C	121	SER

5.3.2 Protein sidechains [i](#)

In the following table, the Percentiles column shows the percent sidechain outliers of the chain as a percentile score with respect to all X-ray entries followed by that with respect to entries of similar resolution.

The Analysed column shows the number of residues for which the sidechain conformation was analysed, and the total number of residues.

Mol	Chain	Analysed	Rotameric	Outliers	Percentiles	
1	A	493/525 (94%)	481 (98%)	12 (2%)	49	60
1	B	493/525 (94%)	482 (98%)	11 (2%)	52	64
1	C	493/525 (94%)	479 (97%)	14 (3%)	43	54
1	D	493/525 (94%)	482 (98%)	11 (2%)	52	64
All	All	1972/2100 (94%)	1924 (98%)	48 (2%)	49	60

All (48) residues with a non-rotameric sidechain are listed below:

Mol	Chain	Res	Type
1	A	80	LEU
1	A	120	ARG
1	A	123	LEU
1	A	232	HIS
1	A	239	ASP

Continued on next page...

Continued from previous page...

Mol	Chain	Res	Type
1	A	289	GLN
1	A	294	LEU
1	A	295	VAL
1	A	306	LEU
1	A	385	TYR
1	A	484	GLU
1	A	579	SER
1	B	80	LEU
1	B	120	ARG
1	B	123	LEU
1	B	232	HIS
1	B	289	GLN
1	B	295	VAL
1	B	306	LEU
1	B	385	TYR
1	B	484	GLU
1	B	556	PHE
1	B	579	SER
1	C	80	LEU
1	C	120	ARG
1	C	123	LEU
1	C	232	HIS
1	C	289	GLN
1	C	294	LEU
1	C	295	VAL
1	C	306	LEU
1	C	384	LEU
1	C	385	TYR
1	C	422	PHE
1	C	484	GLU
1	C	556	PHE
1	C	579	SER
1	D	120	ARG
1	D	123	LEU
1	D	232	HIS
1	D	289	GLN
1	D	295	VAL
1	D	306	LEU
1	D	385	TYR
1	D	422	PHE
1	D	484	GLU
1	D	556	PHE

Continued on next page...

Continued from previous page...

Mol	Chain	Res	Type
1	D	579	SER

Sometimes sidechains can be flipped to improve hydrogen bonding and reduce clashes. There are no such sidechains identified.

5.3.3 RNA [i](#)

There are no RNA molecules in this entry.

5.4 Non-standard residues in protein, DNA, RNA chains [i](#)

There are no non-standard protein/DNA/RNA residues in this entry.

5.5 Carbohydrates [i](#)

8 monosaccharides are modelled in this entry.

In the following table, the Counts columns list the number of bonds (or angles) for which Mogul statistics could be retrieved, the number of bonds (or angles) that are observed in the model and the number of bonds (or angles) that are defined in the Chemical Component Dictionary. The Link column lists molecule types, if any, to which the group is linked. The Z score for a bond length (or angle) is the number of standard deviations the observed value is removed from the expected value. A bond length (or angle) with $|Z| > 2$ is considered an outlier worth inspection. RMSZ is the root-mean-square of all Z scores of the bond lengths (or angles).

Mol	Type	Chain	Res	Link	Bond lengths			Bond angles		
					Counts	RMSZ	$\# Z > 2$	Counts	RMSZ	$\# Z > 2$
2	NAG	E	1	1,2	14,14,15	0.39	0	17,19,21	0.63	1 (5%)
2	NAG	E	2	2	14,14,15	0.37	0	17,19,21	0.51	0
2	NAG	F	1	1,2	14,14,15	0.46	0	17,19,21	0.56	0
2	NAG	F	2	2	14,14,15	0.39	0	17,19,21	0.52	0
2	NAG	G	1	1,2	14,14,15	0.41	0	17,19,21	0.56	0
2	NAG	G	2	2	14,14,15	0.55	0	17,19,21	0.60	0
2	NAG	H	1	1,2	14,14,15	0.46	0	17,19,21	0.59	0
2	NAG	H	2	2	14,14,15	0.39	0	17,19,21	0.54	0

In the following table, the Chirals column lists the number of chiral outliers, the number of chiral centers analysed, the number of these observed in the model and the number defined in the Chemical Component Dictionary. Similar counts are reported in the Torsion and Rings columns. '-' means no outliers of that kind were identified.

Mol	Type	Chain	Res	Link	Chirals	Torsions	Rings
2	NAG	E	1	1,2	-	0/6/23/26	0/1/1/1
2	NAG	E	2	2	-	0/6/23/26	0/1/1/1
2	NAG	F	1	1,2	-	0/6/23/26	0/1/1/1
2	NAG	F	2	2	-	0/6/23/26	0/1/1/1
2	NAG	G	1	1,2	-	0/6/23/26	0/1/1/1
2	NAG	G	2	2	-	0/6/23/26	0/1/1/1
2	NAG	H	1	1,2	-	0/6/23/26	0/1/1/1
2	NAG	H	2	2	-	0/6/23/26	0/1/1/1

There are no bond length outliers.

All (1) bond angle outliers are listed below:

Mol	Chain	Res	Type	Atoms	Z	Observed(°)	Ideal(°)
2	E	1	NAG	C1-O5-C5	2.08	115.01	112.19

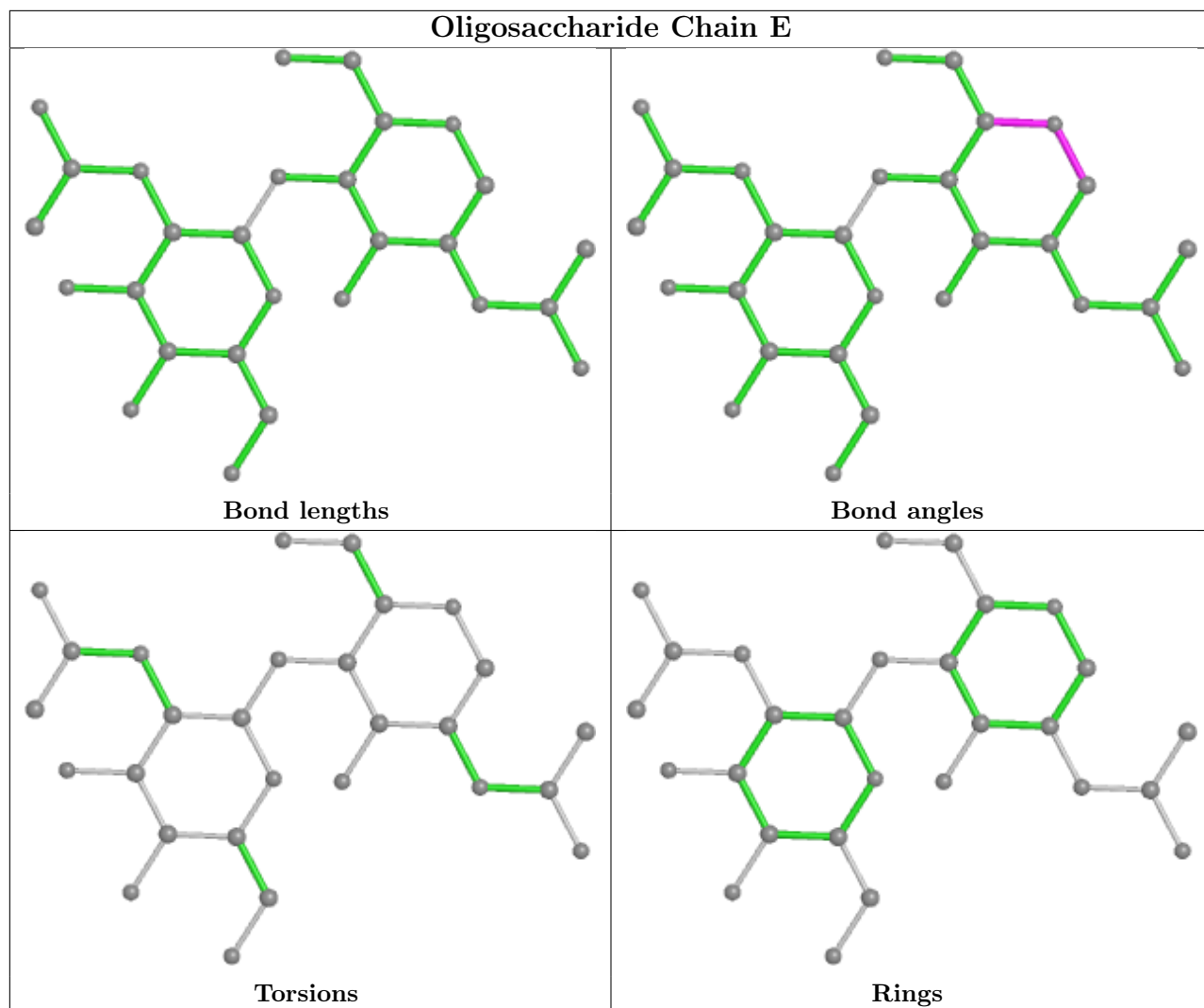
There are no chirality outliers.

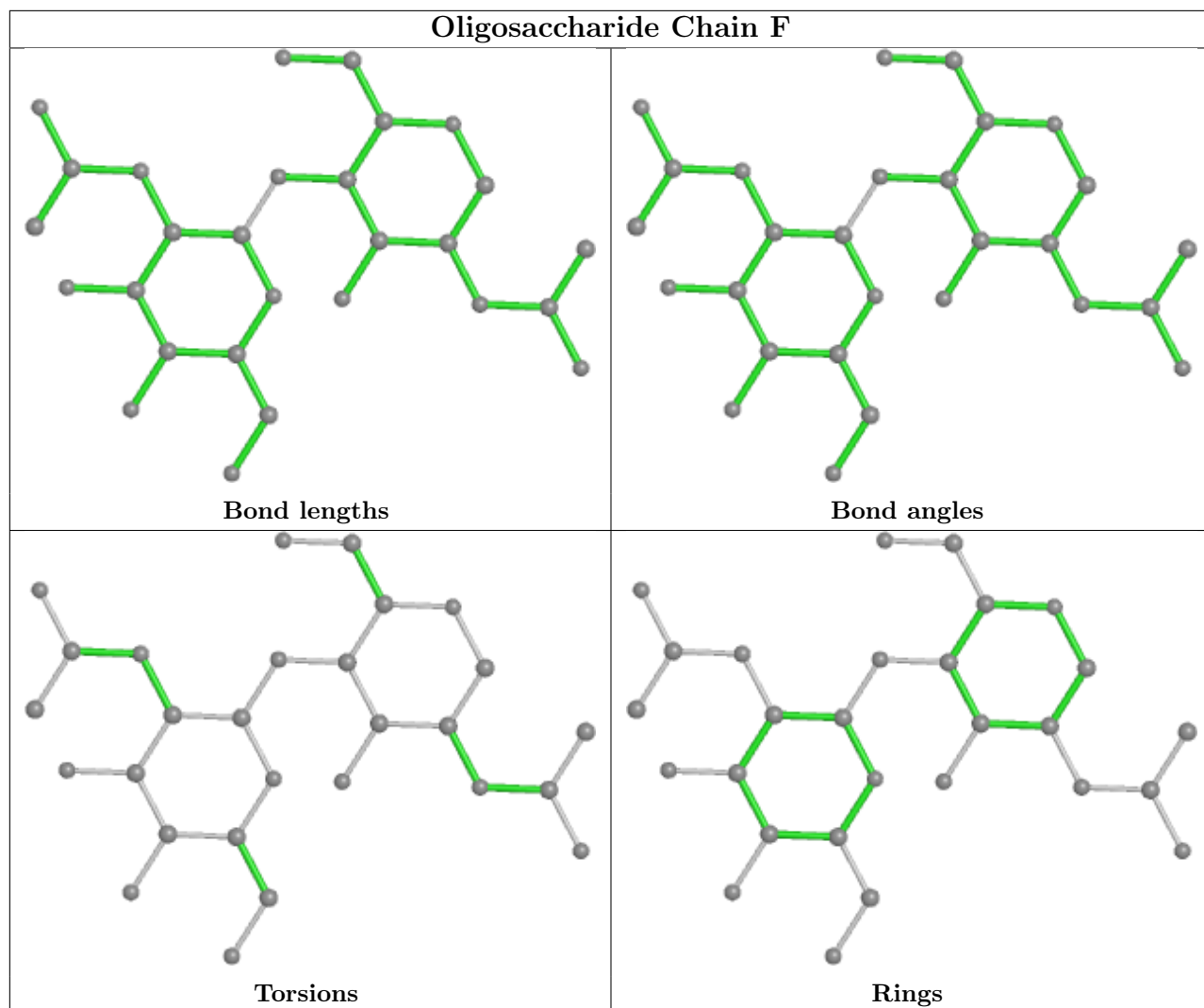
There are no torsion outliers.

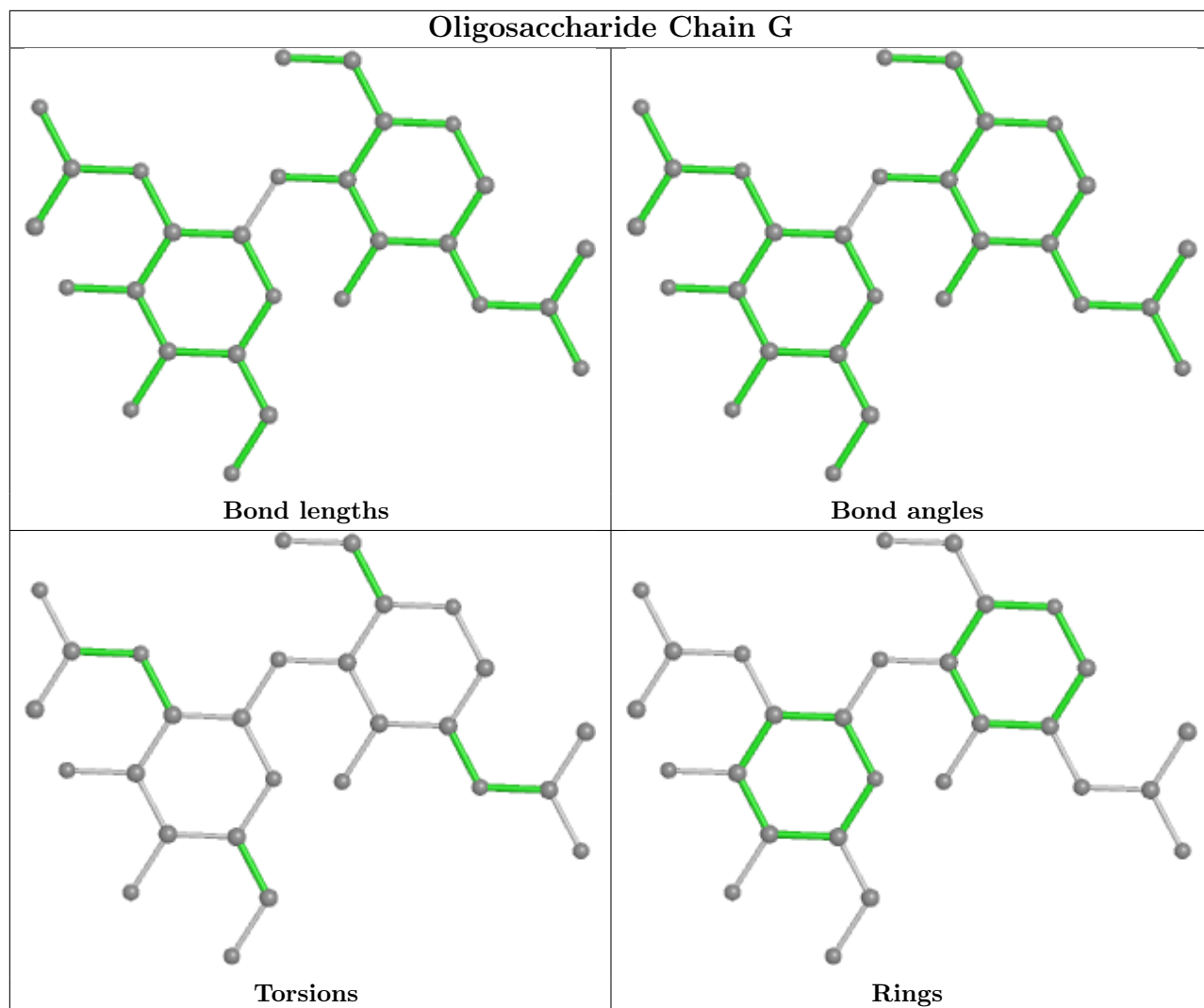
There are no ring outliers.

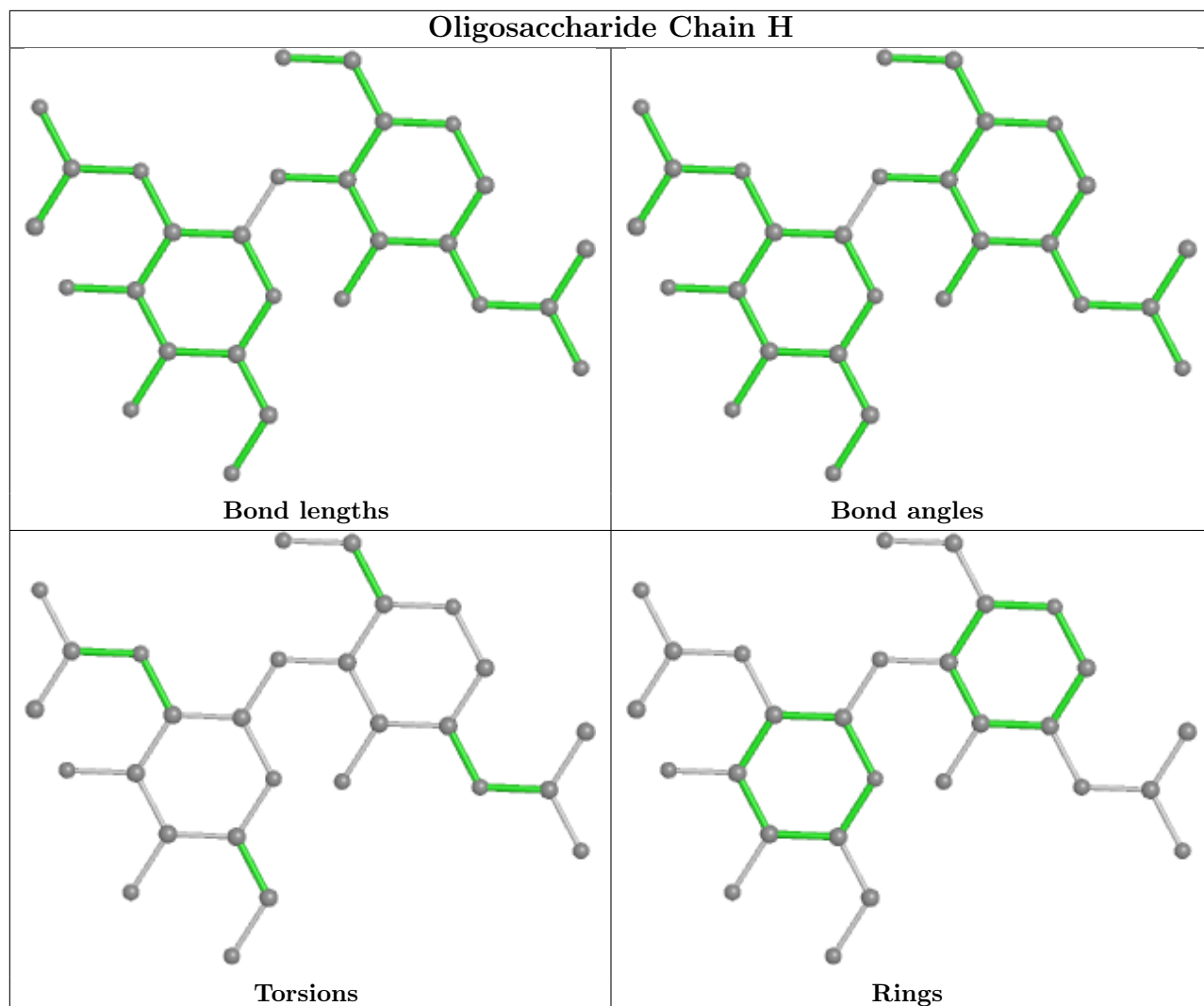
No monomer is involved in short contacts.

The following is a two-dimensional graphical depiction of Mogul quality analysis of bond lengths, bond angles, torsion angles, and ring geometry for oligosaccharide.









5.6 Ligand geometry [i](#)

21 ligands are modelled in this entry.

In the following table, the Counts columns list the number of bonds (or angles) for which Mogul statistics could be retrieved, the number of bonds (or angles) that are observed in the model and the number of bonds (or angles) that are defined in the Chemical Component Dictionary. The Link column lists molecule types, if any, to which the group is linked. The Z score for a bond length (or angle) is the number of standard deviations the observed value is removed from the expected value. A bond length (or angle) with $|Z| > 2$ is considered an outlier worth inspection. RMSZ is the root-mean-square of all Z scores of the bond lengths (or angles).

Mol	Type	Chain	Res	Link	Bond lengths			Bond angles		
					Counts	RMSZ	$\# Z > 2$	Counts	RMSZ	$\# Z > 2$
3	HEM	A	701	1	41,50,50	1.50	4 (9%)	45,82,82	1.52	7 (15%)
3	HEM	B	701	1	41,50,50	2.37	17 (41%)	45,82,82	2.25	16 (35%)
5	DXS	C	706	-	45,48,48	4.14	16 (35%)	60,70,70	2.08	14 (23%)

Mol	Type	Chain	Res	Link	Bond lengths			Bond angles		
					Counts	RMSZ	# Z > 2	Counts	RMSZ	# Z > 2
5	DXS	A	706	-	45,48,48	4.20	19 (42%)	60,70,70	1.84	9 (15%)
6	BOG	D	708	-	20,20,20	1.12	2 (10%)	25,25,25	1.05	2 (8%)
5	DXS	D	706	-	45,48,48	5.55	15 (33%)	60,70,70	1.94	9 (15%)
4	NAG	D	705	1	14,14,15	0.35	0	17,19,21	0.43	0
6	BOG	A	707	-	20,20,20	1.03	1 (5%)	25,25,25	1.19	3 (12%)
4	NAG	D	702	1	14,14,15	0.66	1 (7%)	17,19,21	0.66	0
6	BOG	C	707	-	20,20,20	1.12	1 (5%)	25,25,25	1.37	5 (20%)
4	NAG	C	702	1	14,14,15	0.34	0	17,19,21	0.52	0
6	BOG	D	707	-	20,20,20	1.07	1 (5%)	25,25,25	1.59	4 (16%)
3	HEM	D	701	1	41,50,50	1.54	4 (9%)	45,82,82	1.50	10 (22%)
5	DXS	B	706	-	45,48,48	3.70	11 (24%)	60,70,70	4.00	26 (43%)
4	NAG	B	705	1	14,14,15	0.31	0	17,19,21	0.45	0
4	NAG	A	705	1	14,14,15	0.41	0	17,19,21	0.44	0
3	HEM	C	701	1	41,50,50	2.17	17 (41%)	45,82,82	2.08	13 (28%)
4	NAG	C	705	1	14,14,15	0.32	0	17,19,21	0.46	0
6	BOG	A	708	-	20,20,20	1.09	1 (5%)	25,25,25	1.28	2 (8%)
4	NAG	A	702	1	14,14,15	0.70	1 (7%)	17,19,21	0.76	1 (5%)
4	NAG	B	702	1	14,14,15	0.43	0	17,19,21	0.50	0

In the following table, the Chirals column lists the number of chiral outliers, the number of chiral centers analysed, the number of these observed in the model and the number defined in the Chemical Component Dictionary. Similar counts are reported in the Torsion and Rings columns. '-' means no outliers of that kind were identified.

Mol	Type	Chain	Res	Link	Chirals	Torsions	Rings
3	HEM	A	701	1	-	2/12/54/54	-
3	HEM	B	701	1	-	3/12/54/54	-
5	DXS	C	706	-	-	6/28/32/32	0/5/5/5
5	DXS	A	706	-	-	7/28/32/32	0/5/5/5
6	BOG	D	708	-	-	9/11/31/31	0/1/1/1
5	DXS	D	706	-	-	5/28/32/32	0/5/5/5
4	NAG	D	705	1	-	0/6/23/26	0/1/1/1
6	BOG	A	707	-	-	5/11/31/31	0/1/1/1
4	NAG	D	702	1	-	2/6/23/26	0/1/1/1
6	BOG	C	707	-	-	7/11/31/31	0/1/1/1
4	NAG	C	702	1	-	2/6/23/26	0/1/1/1
6	BOG	D	707	-	-	4/11/31/31	0/1/1/1

Continued on next page...

Continued from previous page...

Mol	Type	Chain	Res	Link	Chirals	Torsions	Rings
3	HEM	D	701	1	-	2/12/54/54	-
5	DXS	B	706	-	-	13/28/32/32	0/5/5/5
4	NAG	B	705	1	-	0/6/23/26	0/1/1/1
4	NAG	A	705	1	-	0/6/23/26	0/1/1/1
3	HEM	C	701	1	-	0/12/54/54	-
4	NAG	C	705	1	-	0/6/23/26	0/1/1/1
6	BOG	A	708	-	-	4/11/31/31	0/1/1/1
4	NAG	A	702	1	-	2/6/23/26	0/1/1/1
4	NAG	B	702	1	-	2/6/23/26	0/1/1/1

All (111) bond length outliers are listed below:

Mol	Chain	Res	Type	Atoms	Z	Observed(Å)	Ideal(Å)
5	D	706	DXS	SAZ-NAY	-23.67	1.25	1.61
5	D	706	DXS	CBA-SAZ	-21.08	1.55	1.77
5	C	706	DXS	SAZ-NAY	-20.54	1.29	1.61
5	A	706	DXS	SAZ-NAY	-15.68	1.37	1.61
5	A	706	DXS	CBA-SAZ	-14.01	1.63	1.77
5	B	706	DXS	SAZ-NAY	12.66	1.81	1.61
5	B	706	DXS	CBA-SAZ	10.79	1.89	1.77
5	B	706	DXS	OBM-SAZ	10.36	1.55	1.43
5	B	706	DXS	OBL-SAZ	10.10	1.55	1.43
5	D	706	DXS	CAU-CLAX	-8.66	1.55	1.74
5	C	706	DXS	CAU-CLAX	-8.17	1.56	1.74
5	C	706	DXS	CAG-NAF	-7.56	1.28	1.39
5	A	706	DXS	CAU-CLAX	-7.29	1.58	1.74
5	D	706	DXS	CAG-NAF	-6.95	1.29	1.39
5	A	706	DXS	CAG-NAF	-6.66	1.29	1.39
5	B	706	DXS	CAR-CAI	-6.60	1.39	1.50
5	C	706	DXS	CAR-CAI	-6.25	1.39	1.50
5	A	706	DXS	CAR-CAI	-6.16	1.39	1.50
5	D	706	DXS	CAR-CAI	-6.11	1.39	1.50
3	B	701	HEM	C1B-NB	-5.91	1.30	1.40
3	B	701	HEM	C3C-C2C	-5.75	1.32	1.40
5	C	706	DXS	CAM-CAH	-5.42	1.31	1.42
5	D	706	DXS	OBM-SAZ	5.30	1.49	1.43
5	D	706	DXS	CAJ-CAG	-5.10	1.30	1.41
5	D	706	DXS	OBL-SAZ	5.10	1.49	1.43
3	C	701	HEM	C1B-NB	-4.97	1.31	1.40
3	C	701	HEM	C4D-ND	-4.94	1.31	1.40
5	A	706	DXS	CAE-CAA	-4.92	1.29	1.39

Continued on next page...

Continued from previous page...

Mol	Chain	Res	Type	Atoms	Z	Observed(Å)	Ideal(Å)
5	D	706	DXS	CAE-CAA	-4.91	1.29	1.39
5	C	706	DXS	CAJ-CAG	-4.89	1.31	1.41
3	D	701	HEM	C3C-C2C	-4.85	1.33	1.40
5	D	706	DXS	CAM-CAH	-4.81	1.32	1.42
5	C	706	DXS	CAE-CAA	-4.80	1.29	1.39
3	B	701	HEM	C4D-ND	-4.78	1.32	1.40
5	A	706	DXS	CAE-NAF	-4.77	1.27	1.36
5	A	706	DXS	CAM-CAH	-4.77	1.32	1.42
5	A	706	DXS	CAJ-CAG	-4.77	1.31	1.41
3	C	701	HEM	C3C-C2C	-4.76	1.33	1.40
3	B	701	HEM	C1B-C2B	-4.73	1.35	1.44
3	A	701	HEM	C3C-C2C	-4.59	1.34	1.40
5	A	706	DXS	OBM-SAZ	4.36	1.48	1.43
5	A	706	DXS	CBJ-NBK	-4.34	1.31	1.43
5	D	706	DXS	CBJ-NBK	-4.27	1.31	1.43
5	C	706	DXS	CBJ-NBK	-4.27	1.31	1.43
5	B	706	DXS	CAM-CAH	-4.09	1.34	1.42
3	B	701	HEM	C4B-NB	-4.01	1.30	1.38
5	C	706	DXS	CAE-NAF	-3.95	1.29	1.36
3	C	701	HEM	C1B-C2B	-3.91	1.37	1.44
5	D	706	DXS	CBC-CBB	-3.89	1.36	1.43
5	D	706	DXS	CAE-NAF	-3.86	1.29	1.36
5	B	706	DXS	CAE-CAA	-3.65	1.31	1.39
5	A	706	DXS	CBA-CBB	-3.61	1.37	1.43
3	A	701	HEM	C3C-CAC	3.54	1.55	1.47
3	C	701	HEM	O2D-CGD	-3.46	1.19	1.30
3	D	701	HEM	C3C-CAC	3.43	1.54	1.47
3	B	701	HEM	C3B-C2B	-3.37	1.30	1.37
5	D	706	DXS	CBA-CBB	-3.35	1.37	1.43
5	A	706	DXS	OBL-SAZ	3.35	1.47	1.43
5	C	706	DXS	OBL-SAZ	3.34	1.47	1.43
5	A	706	DXS	CBC-CBB	-3.29	1.37	1.43
3	B	701	HEM	C1D-ND	-3.27	1.32	1.38
3	C	701	HEM	C1D-ND	-3.19	1.32	1.38
5	B	706	DXS	CAJ-CAG	-3.19	1.34	1.41
3	B	701	HEM	O2D-CGD	-3.18	1.20	1.30
5	C	706	DXS	OBO-CAL	-3.12	1.31	1.37
3	C	701	HEM	C4B-NB	-3.10	1.32	1.38
3	B	701	HEM	C3D-C2D	-2.89	1.30	1.36
3	C	701	HEM	C3B-C2B	-2.88	1.31	1.37
3	B	701	HEM	C2C-C1C	-2.82	1.36	1.42
5	B	706	DXS	CAB-CAC	2.81	1.58	1.51

Continued on next page...

Continued from previous page...

Mol	Chain	Res	Type	Atoms	Z	Observed(Å)	Ideal(Å)
3	D	701	HEM	CAB-C3B	2.73	1.54	1.47
3	D	701	HEM	FE-NB	2.71	2.10	1.96
3	A	701	HEM	CAB-C3B	2.71	1.54	1.47
5	C	706	DXS	CBC-CBB	-2.70	1.38	1.43
3	C	701	HEM	C2C-C1C	-2.68	1.36	1.42
3	B	701	HEM	O2A-CGA	-2.68	1.21	1.30
6	A	708	BOG	O2-C2	-2.67	1.36	1.43
3	C	701	HEM	FE-NB	2.67	2.10	1.96
5	B	706	DXS	CAE-NAF	-2.65	1.31	1.36
3	B	701	HEM	C2A-C3A	-2.63	1.29	1.37
6	D	708	BOG	O2-C2	-2.57	1.36	1.43
6	A	707	BOG	O2-C2	-2.47	1.37	1.43
6	D	707	BOG	O2-C2	-2.45	1.37	1.43
6	C	707	BOG	O2-C2	-2.44	1.37	1.43
5	A	706	DXS	OAO-CAI	-2.44	1.19	1.22
3	B	701	HEM	C4A-CHB	-2.41	1.34	1.41
5	C	706	DXS	CBG-CBB	-2.39	1.37	1.42
5	A	706	DXS	CBG-CBB	-2.38	1.37	1.42
3	C	701	HEM	FE-ND	-2.37	1.85	1.96
3	C	701	HEM	C3D-C2D	-2.37	1.31	1.36
3	C	701	HEM	CAA-C2A	-2.35	1.48	1.52
3	C	701	HEM	C1A-CHA	-2.35	1.34	1.41
4	A	702	NAG	O5-C1	2.32	1.47	1.43
5	C	706	DXS	OBO-CBP	-2.28	1.35	1.42
3	A	701	HEM	FE-NB	2.26	2.08	1.96
5	B	706	DXS	CBJ-NBK	-2.25	1.37	1.43
5	C	706	DXS	OAO-CAI	-2.24	1.19	1.22
3	B	701	HEM	CAA-C2A	-2.22	1.48	1.52
5	A	706	DXS	CBD-CBC	-2.18	1.37	1.42
5	A	706	DXS	CBJ-CBC	-2.14	1.37	1.42
3	B	701	HEM	FE-ND	-2.11	1.86	1.96
6	D	708	BOG	O5-C5	-2.11	1.39	1.44
3	B	701	HEM	C1A-CHA	-2.10	1.35	1.41
3	C	701	HEM	C2A-C3A	-2.08	1.31	1.37
3	B	701	HEM	FE-NB	2.06	2.07	1.96
5	C	706	DXS	CBD-CBC	-2.06	1.38	1.42
3	C	701	HEM	O2A-CGA	-2.05	1.23	1.30
5	A	706	DXS	CBF-CBA	2.04	1.39	1.37
5	D	706	DXS	OBO-CAL	-2.02	1.33	1.37
3	C	701	HEM	C4D-C3D	-2.02	1.41	1.45
4	D	702	NAG	O5-C1	2.01	1.46	1.43

All (121) bond angle outliers are listed below:

Mol	Chain	Res	Type	Atoms	Z	Observed(°)	Ideal(°)
5	B	706	DXS	OBL-SAZ-NAY	-15.69	82.55	107.04
5	B	706	DXS	CBA-SAZ-NAY	-14.13	80.02	106.62
5	B	706	DXS	OBM-SAZ-NAY	-11.65	88.86	107.04
5	D	706	DXS	OBM-SAZ-OBL	-9.34	108.06	119.55
5	C	706	DXS	OBM-SAZ-OBL	-8.51	109.08	119.55
5	B	706	DXS	OBL-SAZ-CBA	8.42	122.95	108.08
5	A	706	DXS	OBM-SAZ-OBL	-7.45	110.39	119.55
3	B	701	HEM	C1B-NB-C4B	5.97	111.24	105.07
6	D	707	BOG	C1'-O1-C1	5.73	123.35	113.84
5	C	706	DXS	CAR-CAI-NAF	5.49	124.36	117.95
5	B	706	DXS	CBC-CBJ-NBK	5.40	126.00	118.23
5	B	706	DXS	CAR-CAI-NAF	5.14	123.95	117.95
3	B	701	HEM	CHD-C1D-ND	4.87	129.72	124.43
3	C	701	HEM	O2D-CGD-O1D	-4.84	111.25	123.30
5	A	706	DXS	CAR-CAI-NAF	4.83	123.59	117.95
5	B	706	DXS	CBI-CBJ-NBK	-4.74	114.53	121.68
3	C	701	HEM	CHC-C4B-NB	4.73	129.57	124.43
5	C	706	DXS	CAV-CAU-CAT	-4.56	115.33	121.24
3	A	701	HEM	CBA-CAA-C2A	-4.52	104.91	112.62
5	B	706	DXS	CBN-CAE-CAA	-4.51	119.49	129.24
5	B	706	DXS	CAP-CAQ-NAY	4.23	126.18	111.90
5	D	706	DXS	CAR-CAI-NAF	4.19	122.84	117.95
3	C	701	HEM	C1B-NB-C4B	4.13	109.34	105.07
3	B	701	HEM	CHC-C4B-NB	4.10	128.88	124.43
3	B	701	HEM	CBA-CAA-C2A	-4.10	105.63	112.62
5	D	706	DXS	CAV-CAU-CAT	-4.09	115.94	121.24
5	B	706	DXS	OBM-SAZ-CBA	4.01	115.16	108.08
5	B	706	DXS	CAJ-CAG-CAH	-3.97	115.54	120.94
3	B	701	HEM	O2D-CGD-O1D	-3.94	113.47	123.30
5	A	706	DXS	CAV-CAU-CAT	-3.88	116.21	121.24
5	D	706	DXS	OBM-SAZ-NAY	3.82	113.00	107.04
5	B	706	DXS	CAS-CAR-CAI	-3.81	112.05	120.26
3	B	701	HEM	CHB-C1B-NB	3.76	129.03	124.38
6	A	708	BOG	C1'-O1-C1	3.73	120.03	113.84
5	B	706	DXS	CAM-CAH-CAG	3.73	124.12	119.65
3	C	701	HEM	CAD-CBD-CGD	3.69	121.55	113.60
3	D	701	HEM	CBA-CAA-C2A	-3.67	106.35	112.62
3	C	701	HEM	CHB-C1B-NB	3.59	128.82	124.38
6	A	708	BOG	C1-O5-C5	-3.54	106.74	113.69
5	A	706	DXS	CBG-CBB-CBA	-3.45	119.08	123.60
5	B	706	DXS	CBR-NBK-CBJ	3.42	124.29	114.12
5	C	706	DXS	CAS-CAT-CAU	3.35	122.77	119.24
3	D	701	HEM	C4B-CHC-C1C	3.32	126.94	122.56

Continued on next page...

Continued from previous page...

Mol	Chain	Res	Type	Atoms	Z	Observed(°)	Ideal(°)
3	A	701	HEM	C4B-CHC-C1C	3.32	126.94	122.56
3	B	701	HEM	CHD-C1D-C2D	-3.31	119.81	124.98
3	C	701	HEM	CHA-C4D-C3D	-3.28	119.18	125.33
6	C	707	BOG	C6-C5-C4	-3.26	105.36	113.00
3	C	701	HEM	CHA-C4D-ND	3.26	128.41	124.38
5	B	706	DXS	CAW-CAR-CAI	3.25	127.28	120.26
5	C	706	DXS	CAW-CAV-CAU	3.19	122.61	119.24
6	A	707	BOG	C1'-O1-C1	3.17	119.10	113.84
5	C	706	DXS	CBA-SAZ-NAY	3.16	112.57	106.62
5	B	706	DXS	CAT-CAS-CAR	3.14	124.43	120.78
5	C	706	DXS	OBM-SAZ-NAY	3.13	111.94	107.04
5	D	706	DXS	CAS-CAT-CAU	3.08	122.49	119.24
5	D	706	DXS	CAV-CAU-CLAX	3.01	124.05	119.35
3	C	701	HEM	CHD-C1D-ND	2.98	127.67	124.43
5	B	706	DXS	OAO-CAI-CAR	-2.97	114.44	120.23
5	A	706	DXS	OBM-SAZ-NAY	2.97	111.68	107.04
6	D	707	BOG	O5-C5-C4	2.91	114.98	109.69
6	D	707	BOG	O1-C1-C2	2.86	112.77	108.30
5	B	706	DXS	CAK-CAJ-CAG	2.86	124.08	119.70
5	B	706	DXS	CAQ-CAP-NAD	-2.85	101.97	111.44
5	C	706	DXS	CBN-CAE-CAA	-2.84	123.10	129.24
3	B	701	HEM	O2A-CGA-CBA	2.81	123.06	114.03
5	A	706	DXS	CAT-CAU-CLAX	2.78	123.70	119.35
5	B	706	DXS	CBG-CBB-CBA	-2.78	119.96	123.60
3	C	701	HEM	CMD-C2D-C1D	2.77	129.25	125.04
3	A	701	HEM	C4D-ND-C1D	2.72	107.89	105.07
6	C	707	BOG	C1'-O1-C1	2.72	118.36	113.84
3	B	701	HEM	CHA-C4D-ND	2.71	127.73	124.38
3	D	701	HEM	C4D-ND-C1D	2.71	107.87	105.07
3	B	701	HEM	O2D-CGD-CBD	2.69	122.68	114.03
5	B	706	DXS	CAW-CAR-CAS	-2.67	114.78	118.59
3	B	701	HEM	CAD-CBD-CGD	2.67	119.34	113.60
5	C	706	DXS	CBB-CBA-SAZ	2.60	124.68	121.58
3	B	701	HEM	CHA-C4D-C3D	-2.59	120.46	125.33
6	A	707	BOG	O5-C5-C4	2.57	114.36	109.69
6	D	708	BOG	C1'-O1-C1	2.57	118.10	113.84
3	D	701	HEM	CAA-CBA-CGA	-2.56	106.57	113.76
4	A	702	NAG	C1-O5-C5	2.55	115.65	112.19
3	A	701	HEM	C1B-NB-C4B	2.49	107.65	105.07
3	B	701	HEM	CBD-CAD-C3D	-2.47	105.76	112.63
5	A	706	DXS	OBM-SAZ-CBA	2.47	112.44	108.08
5	A	706	DXS	CAW-CAV-CAU	2.46	121.84	119.24

Continued on next page...

Continued from previous page...

Mol	Chain	Res	Type	Atoms	Z	Observed(°)	Ideal(°)
5	B	706	DXS	CAK-CAL-CAM	-2.45	117.52	120.81
3	B	701	HEM	CAB-C3B-C2B	-2.45	120.54	128.60
5	B	706	DXS	CBE-CBD-CBC	2.43	124.27	120.89
3	D	701	HEM	CHC-C4B-C3B	2.42	128.28	124.57
3	A	701	HEM	CHC-C4B-C3B	2.42	128.28	124.57
5	A	706	DXS	CBN-CAE-NAF	2.42	125.42	122.37
3	C	701	HEM	O2D-CGD-CBD	2.41	121.78	114.03
5	C	706	DXS	CBN-CAE-NAF	2.31	125.28	122.37
5	C	706	DXS	CBF-CBA-CBB	-2.31	118.68	121.00
6	C	707	BOG	C4'-C3'-C2'	-2.30	102.73	114.42
5	C	706	DXS	CAT-CAU-CLAX	2.29	122.93	119.35
5	B	706	DXS	CBA-CBB-CBC	2.28	120.82	117.94
5	C	706	DXS	CBG-CBB-CBA	-2.28	120.61	123.60
3	D	701	HEM	C3C-C4C-NC	-2.25	106.69	110.94
3	C	701	HEM	CHB-C1B-C2B	-2.25	120.50	126.72
5	C	706	DXS	CBR-NBK-CBJ	2.24	120.78	114.12
5	B	706	DXS	CBD-CBC-CBB	-2.23	115.68	118.45
3	B	701	HEM	O2A-CGA-O1A	-2.22	117.77	123.30
6	D	707	BOG	O5-C1-O1	-2.21	104.73	109.97
3	C	701	HEM	O2A-CGA-CBA	2.18	121.05	114.03
5	D	706	DXS	CAW-CAR-CAS	-2.15	115.52	118.59
6	C	707	BOG	O5-C5-C4	2.12	113.55	109.69
3	D	701	HEM	CMA-C3A-C4A	-2.11	125.22	128.46
5	D	706	DXS	CBR-NBK-CBQ	2.11	122.94	116.12
6	C	707	BOG	C1-O5-C5	-2.11	109.54	113.69
5	B	706	DXS	CAM-CAH-CAA	-2.11	130.53	134.17
3	D	701	HEM	C2C-C3C-C4C	2.10	108.37	106.90
3	A	701	HEM	CAA-CBA-CGA	-2.10	107.87	113.76
6	D	708	BOG	O5-C5-C6	-2.10	101.22	106.44
3	A	701	HEM	C3B-C2B-C1B	2.09	108.04	106.49
3	C	701	HEM	CBB-CAB-C3B	-2.09	117.22	127.62
3	B	701	HEM	CHB-C1B-C2B	-2.05	121.05	126.72
6	A	707	BOG	C4-C3-C2	-2.03	107.28	110.82
3	D	701	HEM	C4C-CHD-C1D	2.02	125.22	122.56
5	D	706	DXS	CAW-CAV-CAU	2.02	121.37	119.24
3	D	701	HEM	C1B-NB-C4B	2.01	107.15	105.07

There are no chirality outliers.

All (75) torsion outliers are listed below:

Mol	Chain	Res	Type	Atoms
5	B	706	DXS	CBB-CBA-SAZ-OBL

Continued on next page...

Continued from previous page...

Mol	Chain	Res	Type	Atoms
5	B	706	DXS	CBB-CBA-SAZ-OBM
5	B	706	DXS	CBF-CBA-SAZ-OBL
5	B	706	DXS	CBF-CBA-SAZ-OBM
5	B	706	DXS	CAQ-NAY-SAZ-CBA
5	B	706	DXS	CAQ-NAY-SAZ-OBM
6	A	708	BOG	O5-C1-O1-C1'
6	A	708	BOG	C2'-C1'-O1-C1
6	C	707	BOG	C2'-C1'-O1-C1
6	D	707	BOG	O5-C1-O1-C1'
6	D	708	BOG	C4-C5-C6-O6
6	A	707	BOG	O5-C5-C6-O6
6	D	708	BOG	O5-C5-C6-O6
4	D	702	NAG	O5-C5-C6-O6
6	D	707	BOG	C2-C1-O1-C1'
4	A	702	NAG	O5-C5-C6-O6
4	B	702	NAG	O5-C5-C6-O6
4	C	702	NAG	O5-C5-C6-O6
4	D	702	NAG	C4-C5-C6-O6
5	D	706	DXS	CAQ-NAY-SAZ-OBL
6	D	707	BOG	O5-C5-C6-O6
6	C	707	BOG	O1-C1'-C2'-C3'
5	A	706	DXS	CAQ-NAY-SAZ-OBL
6	D	708	BOG	C2-C1-O1-C1'
6	A	707	BOG	C4-C5-C6-O6
6	C	707	BOG	C2'-C3'-C4'-C5'
5	B	706	DXS	OAO-CAI-CAR-CAW
5	B	706	DXS	CBC-CBJ-NBK-CBR
6	A	708	BOG	C2'-C3'-C4'-C5'
6	D	708	BOG	O5-C1-O1-C1'
4	A	702	NAG	C4-C5-C6-O6
6	D	708	BOG	C2'-C1'-O1-C1
6	C	707	BOG	C3'-C4'-C5'-C6'
6	D	708	BOG	C2'-C3'-C4'-C5'
5	D	706	DXS	CAQ-NAY-SAZ-OBM
6	C	707	BOG	C1'-C2'-C3'-C4'
5	C	706	DXS	CAQ-NAY-SAZ-OBL
4	B	702	NAG	C4-C5-C6-O6
5	A	706	DXS	NAF-CAI-CAR-CAW
5	B	706	DXS	NAF-CAI-CAR-CAW
5	A	706	DXS	CAQ-NAY-SAZ-OBM
4	C	702	NAG	C4-C5-C6-O6
6	D	708	BOG	C1'-C2'-C3'-C4'

Continued on next page...

Continued from previous page...

Mol	Chain	Res	Type	Atoms
5	D	706	DXS	CAQ-NAY-SAZ-CBA
6	D	708	BOG	C5'-C6'-C7'-C8'
5	A	706	DXS	CAQ-NAY-SAZ-CBA
6	D	708	BOG	C4'-C5'-C6'-C7'
5	B	706	DXS	CAP-CAQ-NAY-SAZ
6	C	707	BOG	C5'-C6'-C7'-C8'
5	B	706	DXS	CBI-CBJ-NBK-CBR
5	B	706	DXS	CBC-CBJ-NBK-CBQ
3	B	701	HEM	C4B-C3B-CAB-CBB
5	B	706	DXS	NAF-CAI-CAR-CAS
5	C	706	DXS	NAF-CAI-CAR-CAS
5	C	706	DXS	NAF-CAI-CAR-CAW
5	D	706	DXS	NAF-CAI-CAR-CAW
5	A	706	DXS	OAO-CAI-CAR-CAW
6	A	708	BOG	C1'-C2'-C3'-C4'
5	C	706	DXS	CAQ-NAY-SAZ-CBA
5	C	706	DXS	CAQ-NAY-SAZ-OBM
6	D	707	BOG	C4-C5-C6-O6
6	A	707	BOG	O5-C1-O1-C1'
5	A	706	DXS	NAF-CAI-CAR-CAS
5	D	706	DXS	NAF-CAI-CAR-CAS
6	A	707	BOG	O1-C1'-C2'-C3'
5	C	706	DXS	CBC-CBJ-NBK-CBR
3	B	701	HEM	CAA-CBA-CGA-O2A
5	A	706	DXS	OAO-CAI-CAR-CAS
3	B	701	HEM	CAA-CBA-CGA-O1A
3	D	701	HEM	CAA-CBA-CGA-O2A
3	A	701	HEM	CAA-CBA-CGA-O2A
3	D	701	HEM	CAA-CBA-CGA-O1A
3	A	701	HEM	CAA-CBA-CGA-O1A
6	A	707	BOG	C2'-C1'-O1-C1
6	C	707	BOG	O5-C1-O1-C1'

There are no ring outliers.

11 monomers are involved in 27 short contacts:

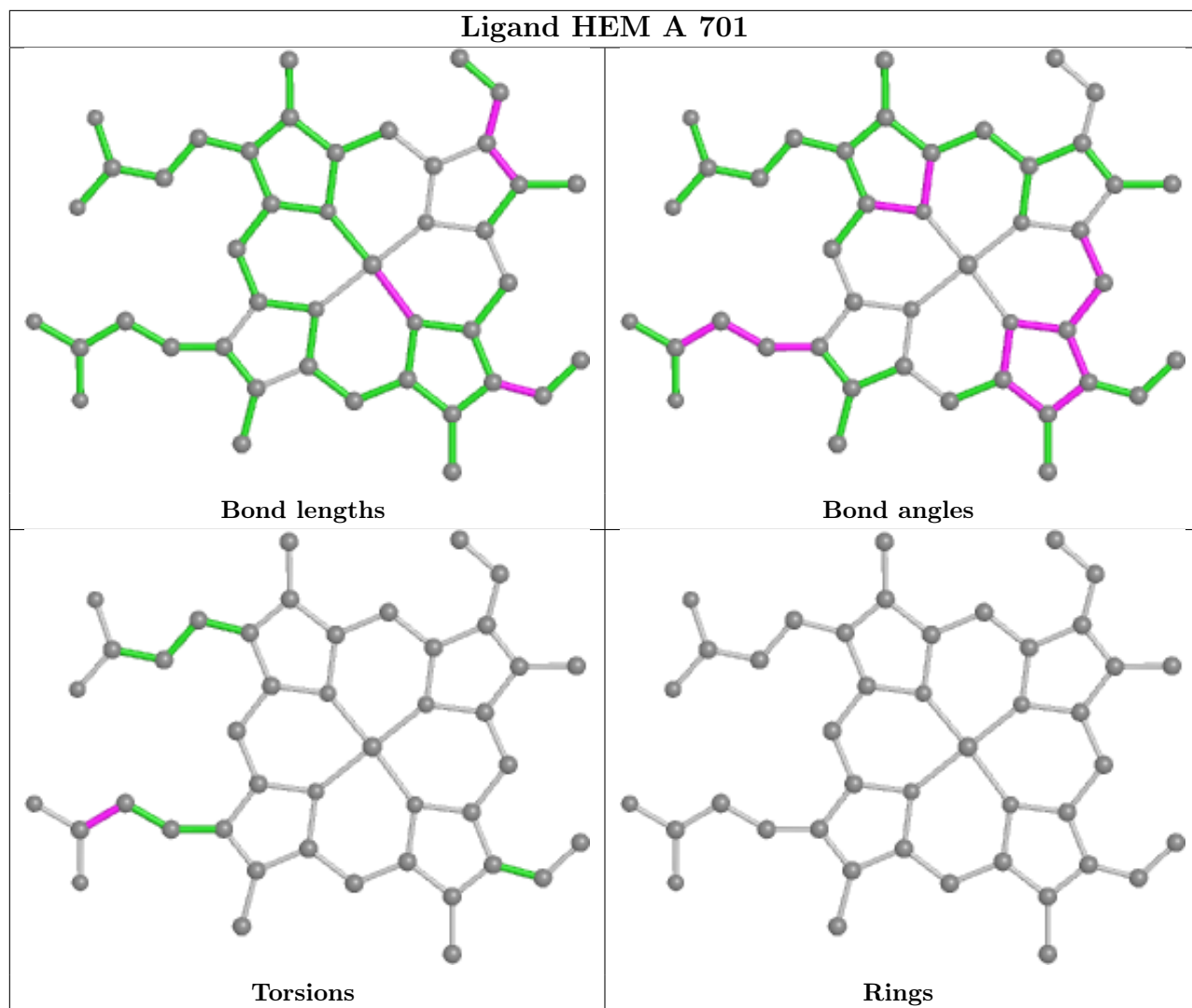
Mol	Chain	Res	Type	Clashes	Symm-Clashes
3	A	701	HEM	2	0
3	B	701	HEM	2	0
5	C	706	DXS	3	0
5	A	706	DXS	2	0
5	D	706	DXS	3	0

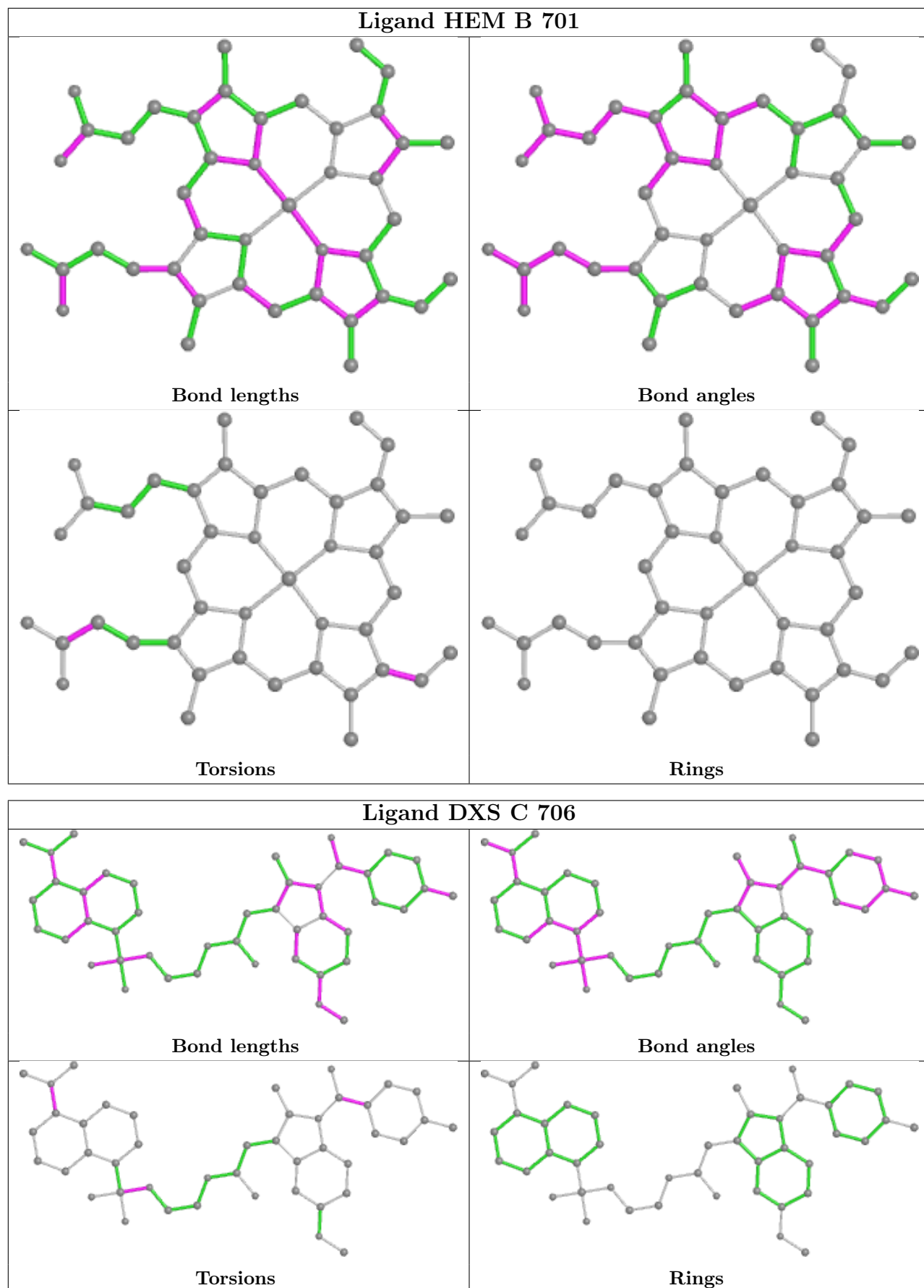
Continued on next page...

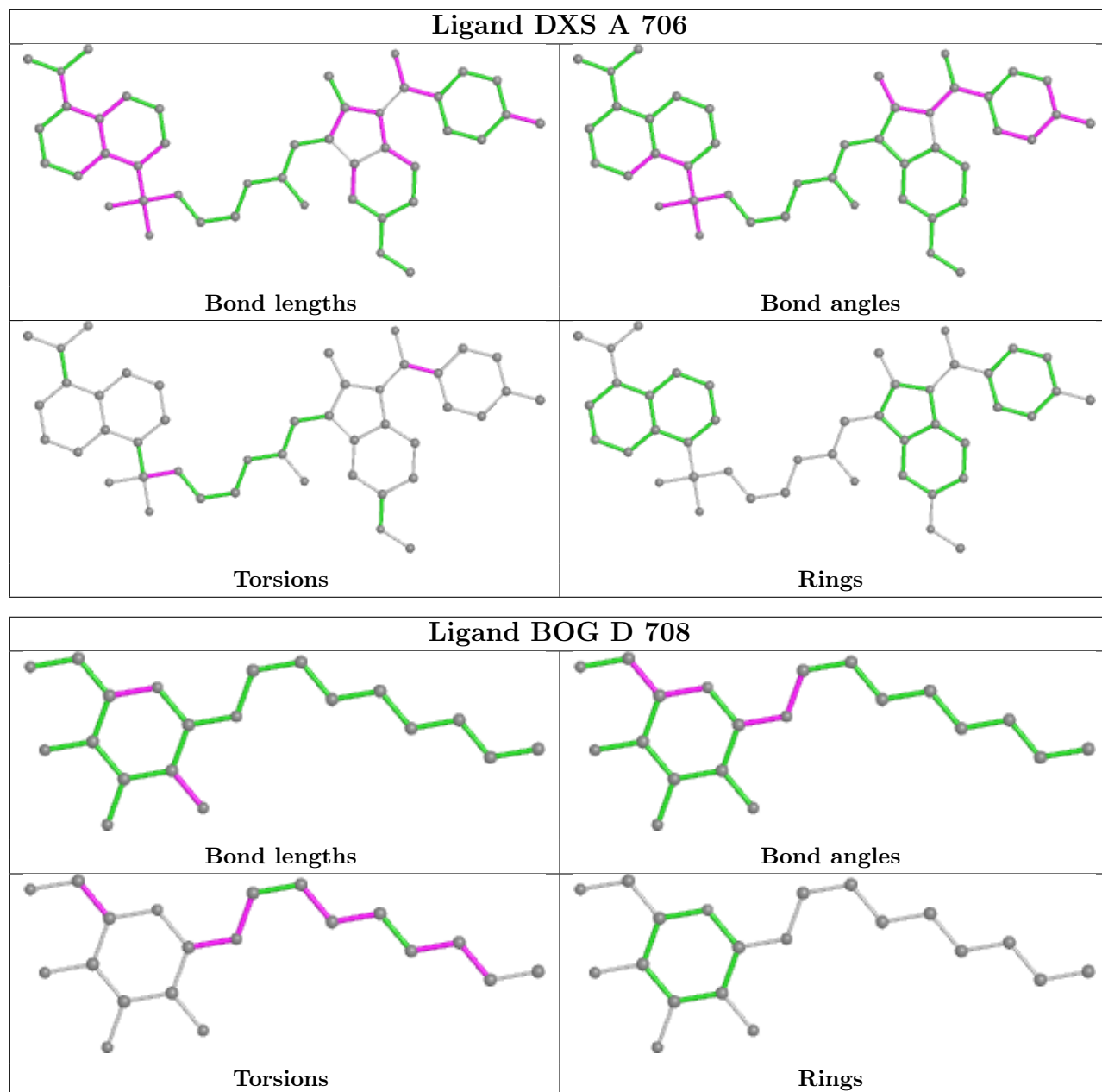
Continued from previous page...

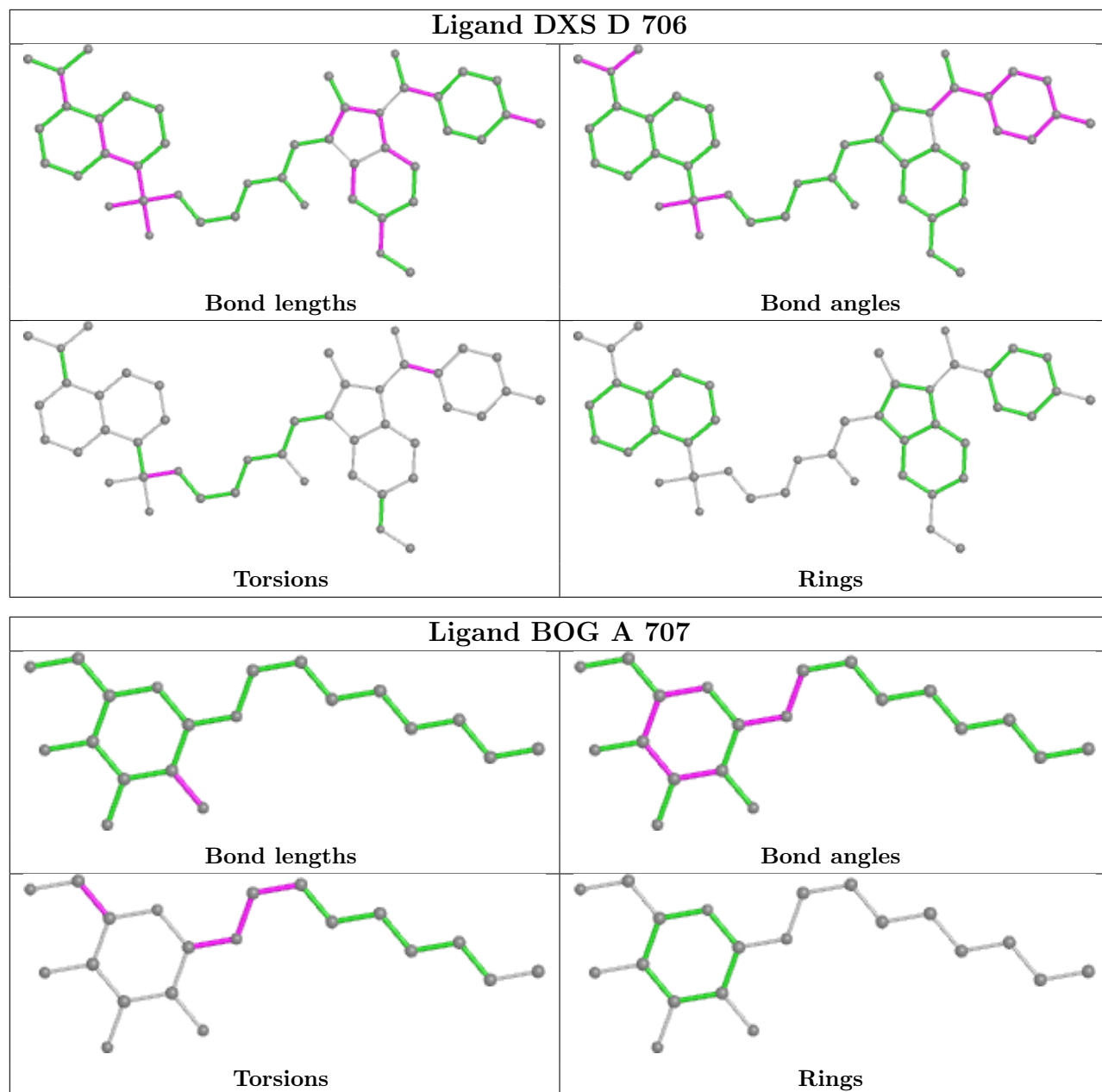
Mol	Chain	Res	Type	Clashes	Symm-Clashes
6	A	707	BOG	2	0
6	C	707	BOG	3	0
6	D	707	BOG	1	0
3	D	701	HEM	1	0
5	B	706	DXS	3	0
3	C	701	HEM	5	0

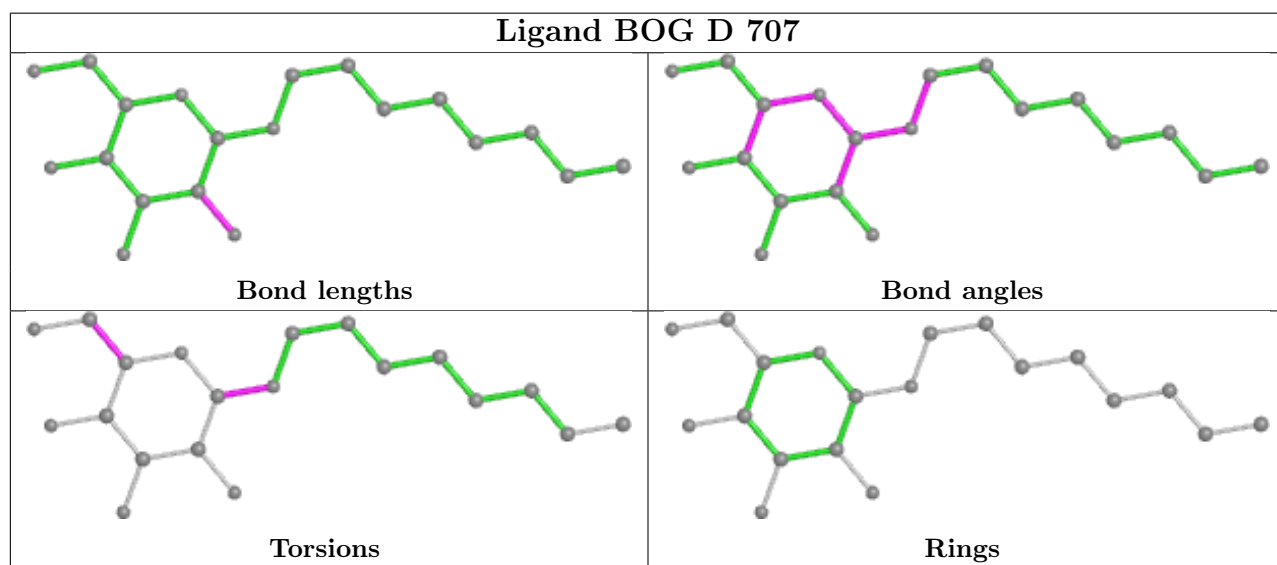
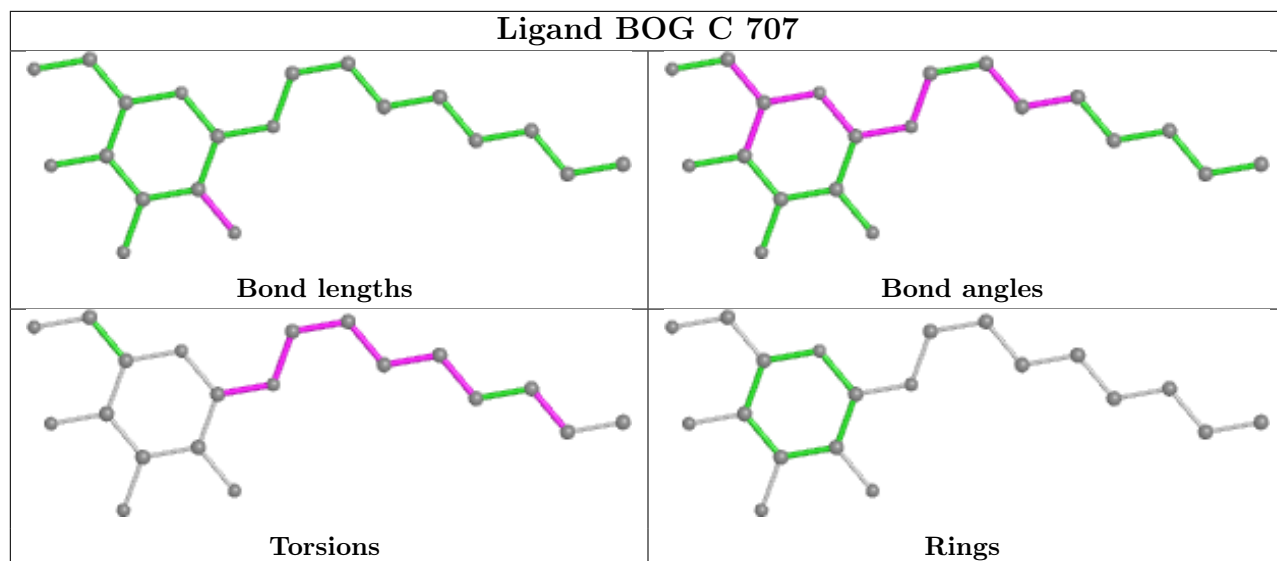
The following is a two-dimensional graphical depiction of Mogul quality analysis of bond lengths, bond angles, torsion angles, and ring geometry for all instances of the Ligand of Interest. In addition, ligands with molecular weight > 250 and outliers as shown on the validation Tables will also be included. For torsion angles, if less than 5% of the Mogul distribution of torsion angles is within 10 degrees of the torsion angle in question, then that torsion angle is considered an outlier. Any bond that is central to one or more torsion angles identified as an outlier by Mogul will be highlighted in the graph. For rings, the root-mean-square deviation (RMSD) between the ring in question and similar rings identified by Mogul is calculated over all ring torsion angles. If the average RMSD is greater than 60 degrees and the minimal RMSD between the ring in question and any Mogul-identified rings is also greater than 60 degrees, then that ring is considered an outlier. The outliers are highlighted in purple. The color gray indicates Mogul did not find sufficient equivalents in the CSD to analyse the geometry.

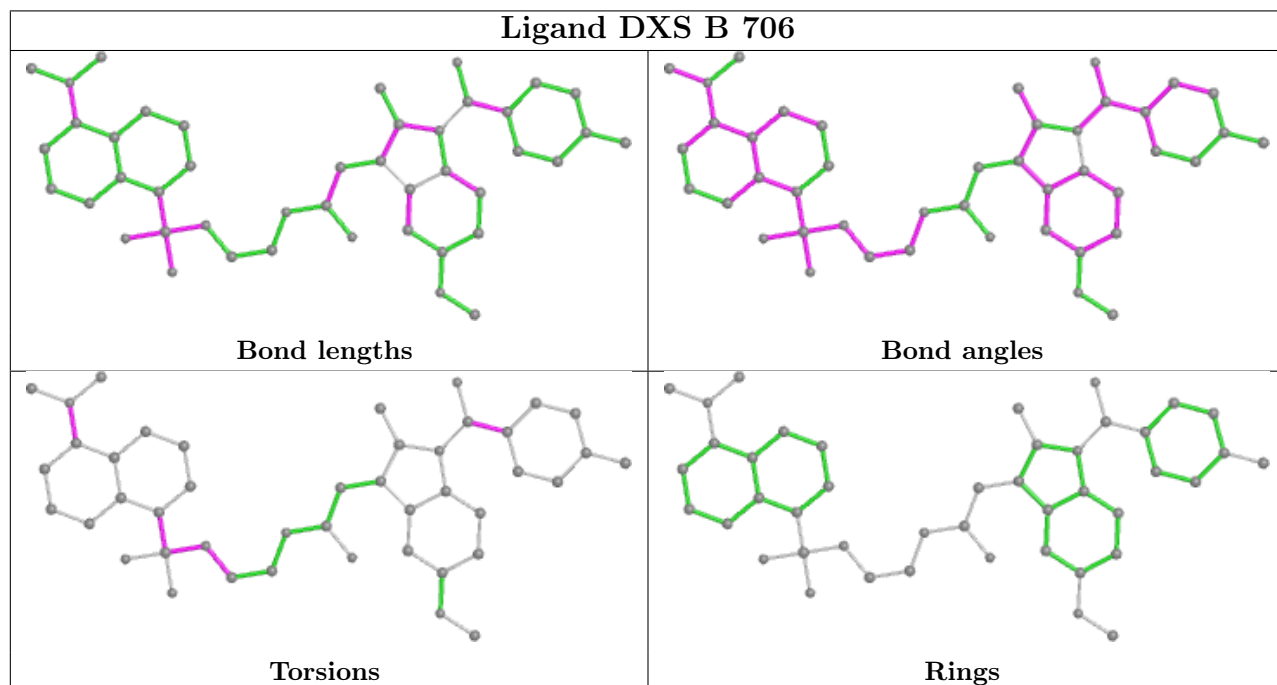
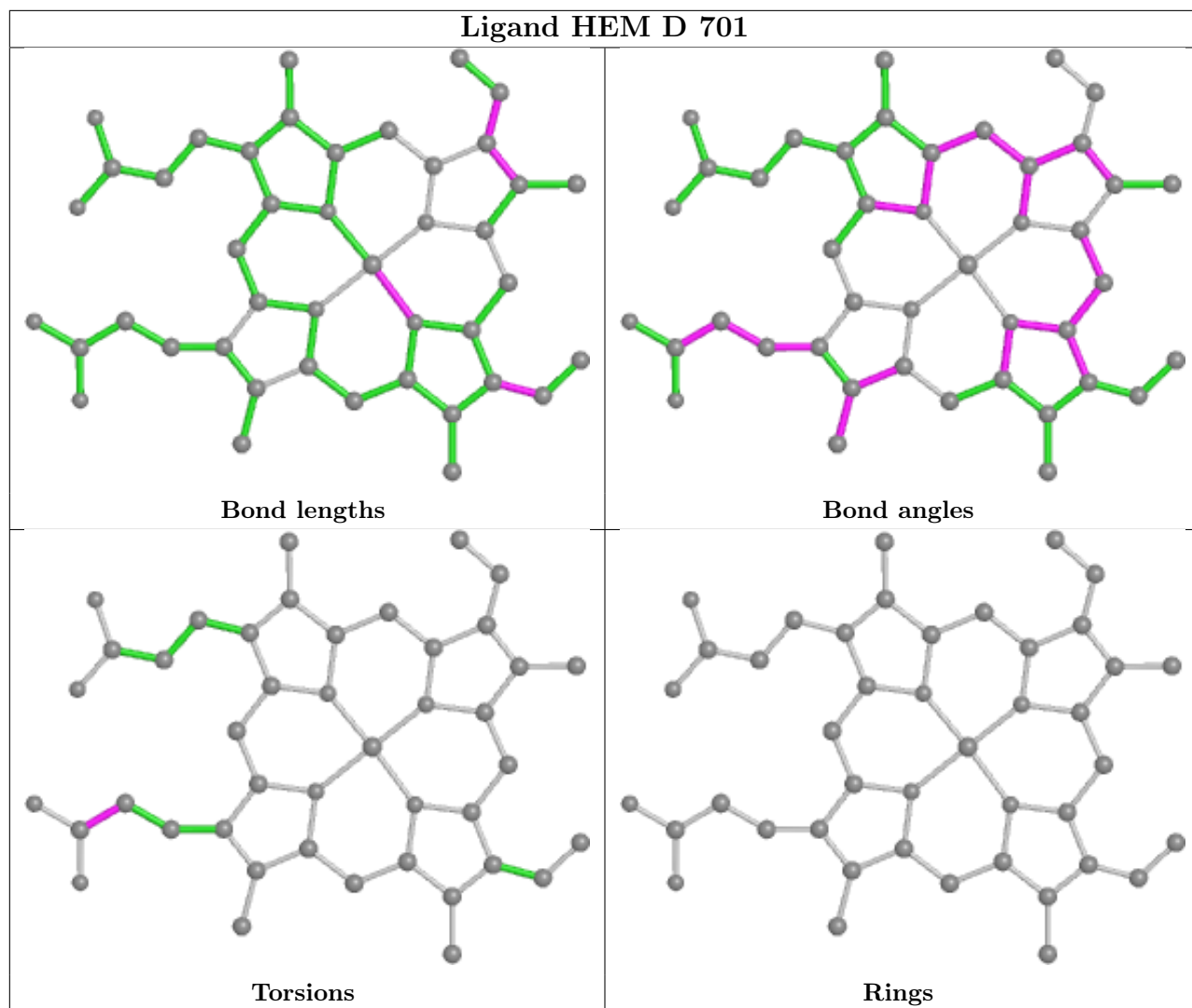


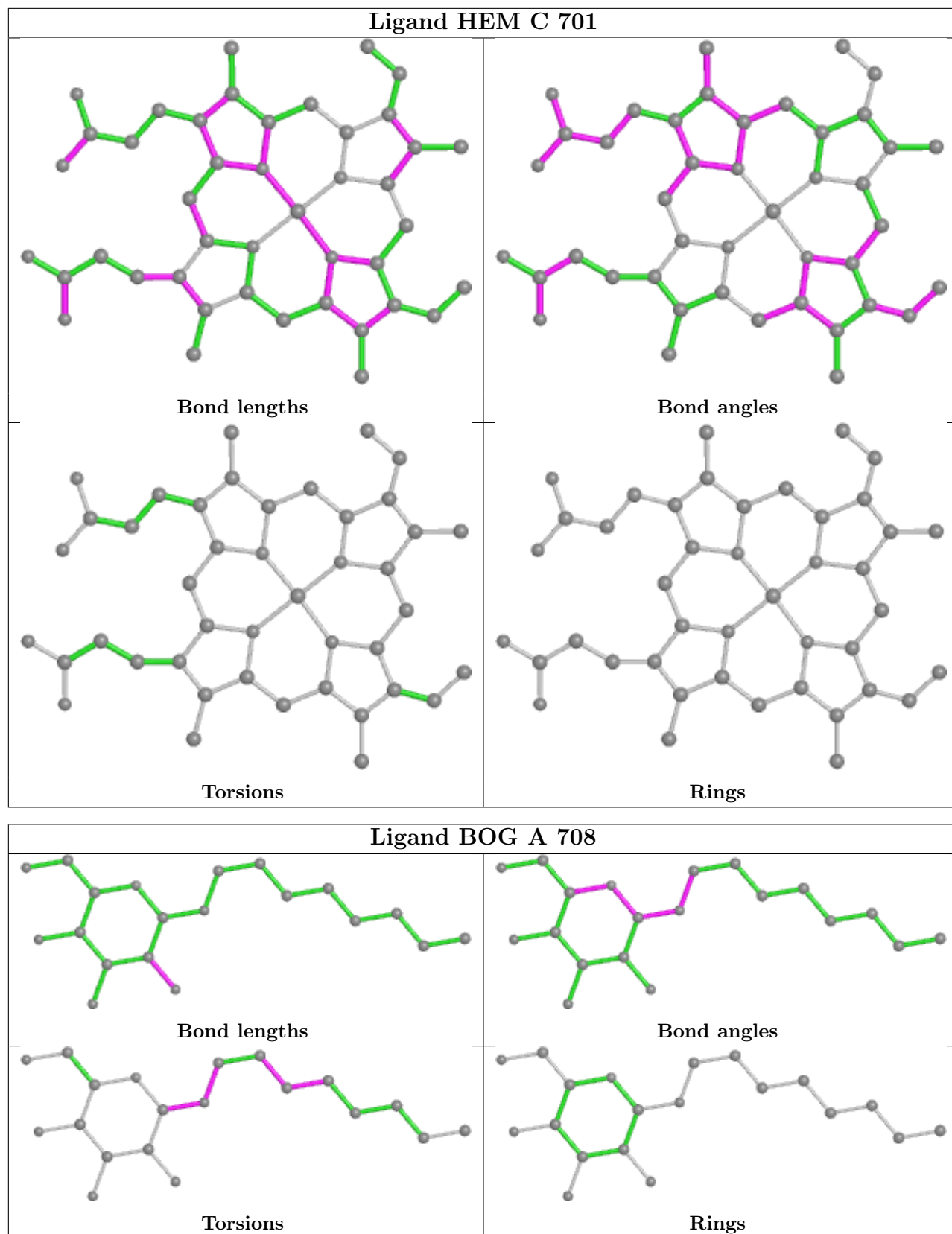












5.7 Other polymers [i](#)

There are no such residues in this entry.

5.8 Polymer linkage issues [i](#)

There are no chain breaks in this entry.

6 Fit of model and data [i](#)

6.1 Protein, DNA and RNA chains [i](#)

In the following table, the column labelled '#RSRZ > 2' contains the number (and percentage) of RSRZ outliers, followed by percent RSRZ outliers for the chain as percentile scores relative to all X-ray entries and entries of similar resolution. The OWAB column contains the minimum, median, 95th percentile and maximum values of the occupancy-weighted average B-factor per residue. The column labelled 'Q < 0.9' lists the number of (and percentage) of residues with an average occupancy less than 0.9.

Mol	Chain	Analysed	<RSRZ>	#RSRZ>2	OWAB(Å ²)	Q<0.9
1	A	552/587 (94%)	-0.40	2 (0%) 92 92	16, 31, 53, 69	0
1	B	552/587 (94%)	-0.32	0 100 100	15, 33, 57, 70	0
1	C	552/587 (94%)	-0.36	0 100 100	17, 32, 53, 67	0
1	D	552/587 (94%)	-0.32	3 (0%) 91 90	18, 36, 59, 86	0
All	All	2208/2348 (94%)	-0.35	5 (0%) 95 95	15, 33, 56, 86	0

All (5) RSRZ outliers are listed below:

Mol	Chain	Res	Type	RSRZ
1	D	122	TYR	4.9
1	D	583	GLN	4.1
1	A	583	GLN	3.8
1	A	122	TYR	2.9
1	D	74	PHE	2.3

6.2 Non-standard residues in protein, DNA, RNA chains [i](#)

There are no non-standard protein/DNA/RNA residues in this entry.

6.3 Carbohydrates [i](#)

In the following table, the Atoms column lists the number of modelled atoms in the group and the number defined in the chemical component dictionary. The B-factors column lists the minimum, median, 95th percentile and maximum values of B factors of atoms in the group. The column labelled 'Q < 0.9' lists the number of atoms with occupancy less than 0.9.

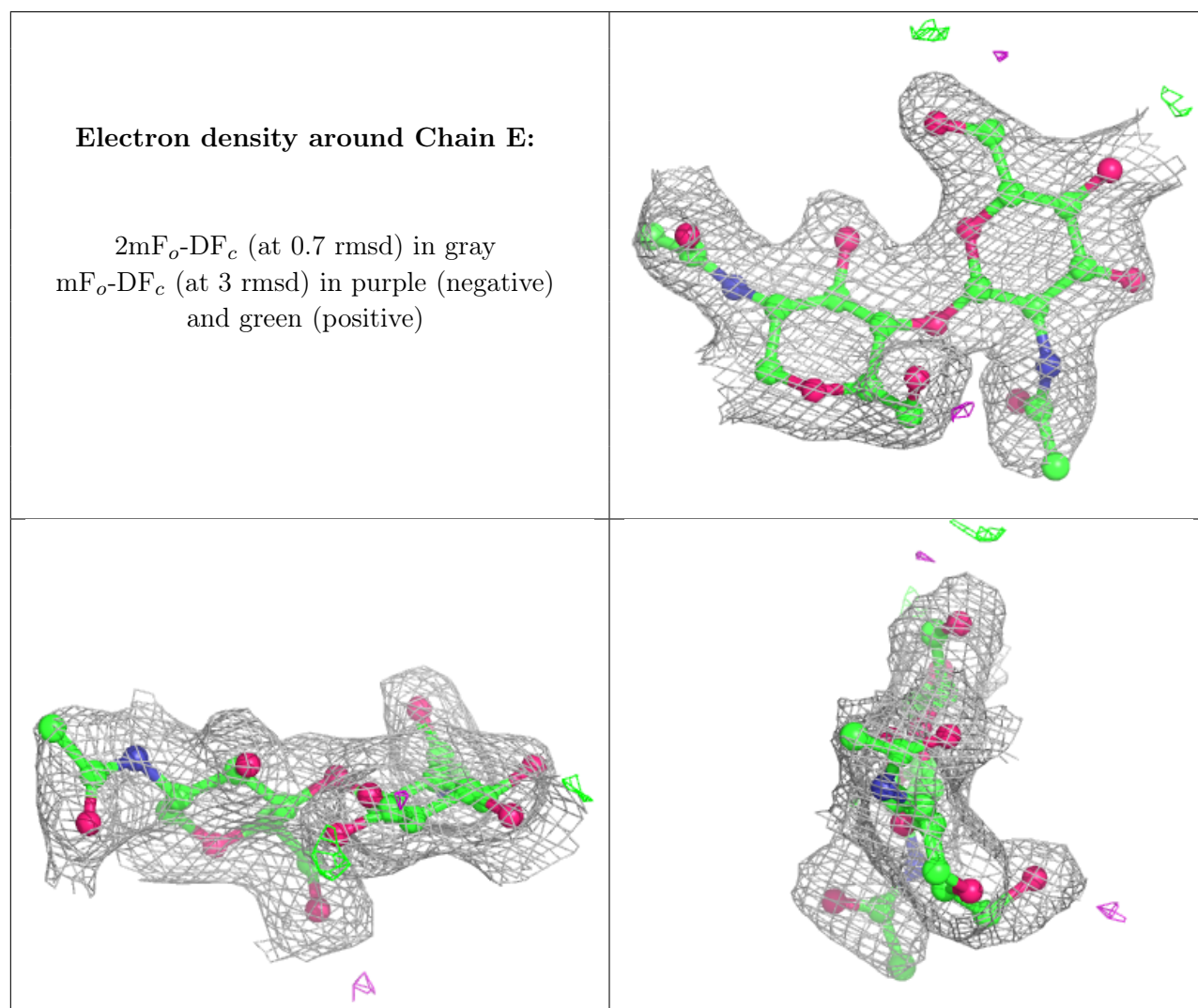
Mol	Type	Chain	Res	Atoms	RSCC	RSR	B-factors(Å ²)	Q<0.9
2	NAG	F	2	14/15	0.87	0.14	43,50,57,58	0
2	NAG	G	2	14/15	0.88	0.15	45,50,53,57	0

Continued on next page...

Continued from previous page...

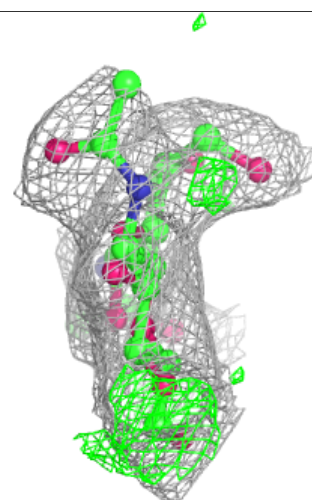
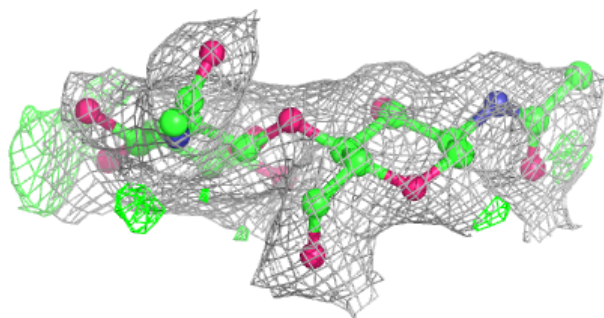
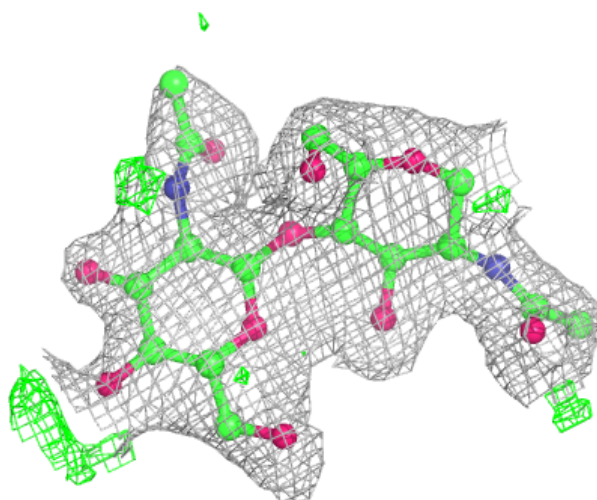
Mol	Type	Chain	Res	Atoms	RSCC	RSR	B-factors(\AA^2)	Q<0.9
2	NAG	H	2	14/15	0.88	0.15	49,56,59,60	0
2	NAG	E	2	14/15	0.90	0.13	39,43,50,50	0
2	NAG	F	1	14/15	0.94	0.13	22,31,35,42	0
2	NAG	G	1	14/15	0.95	0.12	22,30,34,41	0
2	NAG	H	1	14/15	0.97	0.10	26,35,40,44	0
2	NAG	E	1	14/15	0.97	0.12	25,30,35,36	0

The following is a graphical depiction of the model fit to experimental electron density for oligosaccharide. Each fit is shown from different orientation to approximate a three-dimensional view.



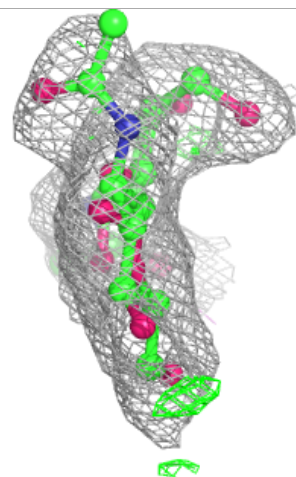
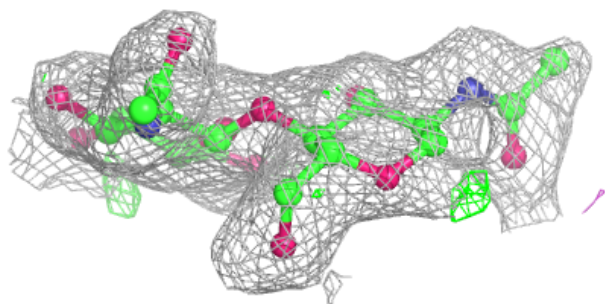
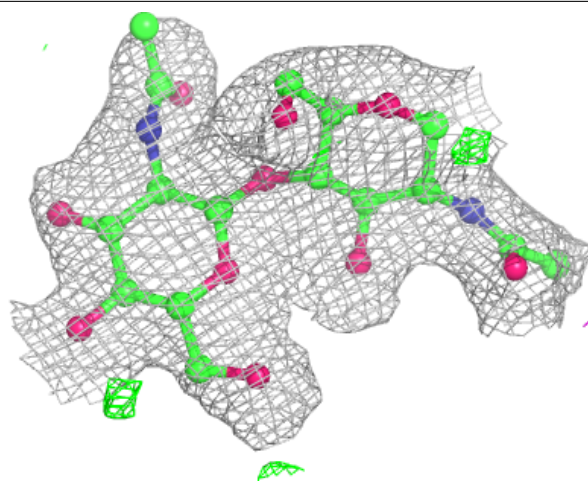
Electron density around Chain F:

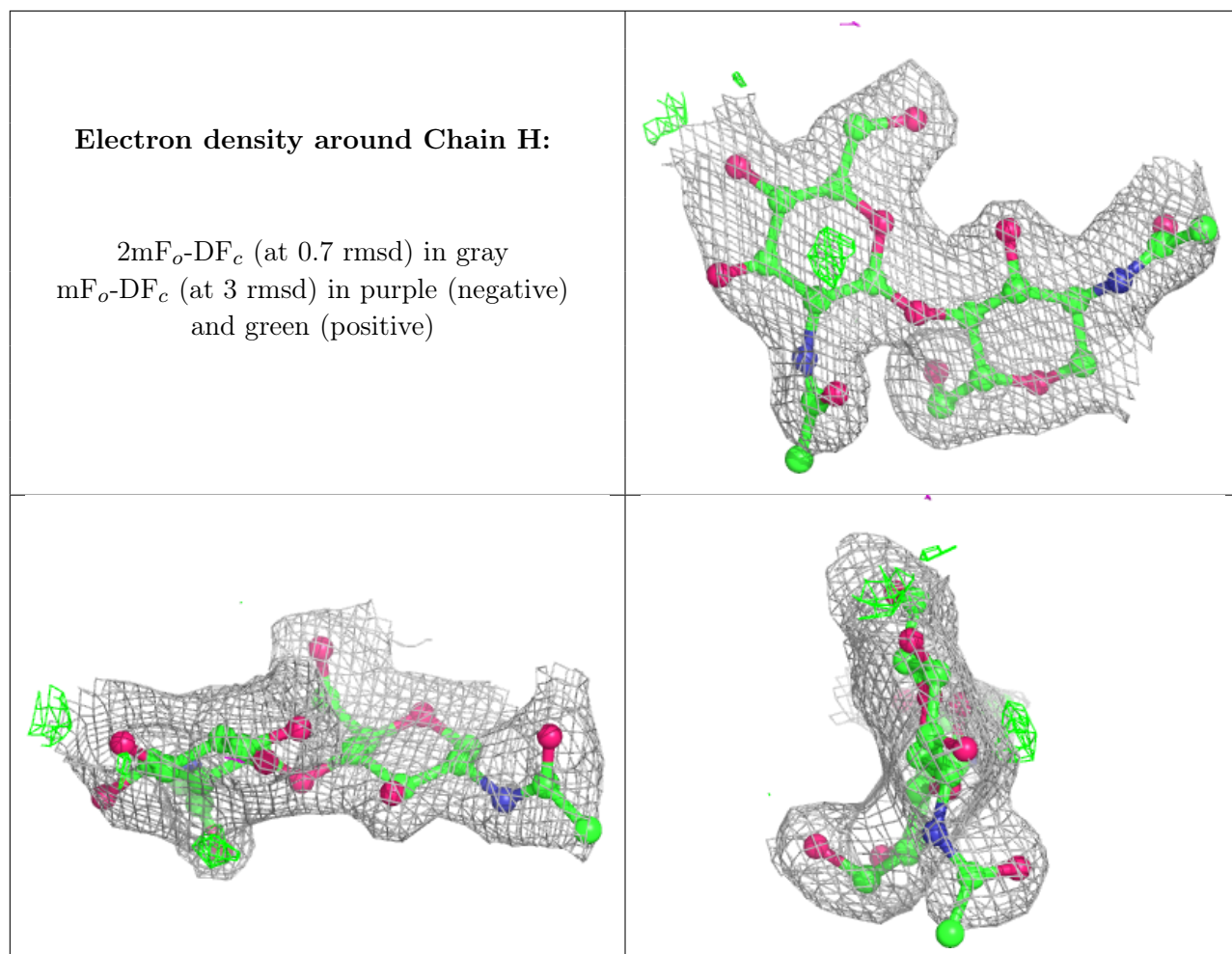
$2mF_o-DF_c$ (at 0.7 rmsd) in gray
 mF_o-DF_c (at 3 rmsd) in purple (negative)
and green (positive)



Electron density around Chain G:

$2mF_o-DF_c$ (at 0.7 rmsd) in gray
 mF_o-DF_c (at 3 rmsd) in purple (negative)
and green (positive)





6.4 Ligands [i](#)

In the following table, the Atoms column lists the number of modelled atoms in the group and the number defined in the chemical component dictionary. The B-factors column lists the minimum, median, 95th percentile and maximum values of B factors of atoms in the group. The column labelled 'Q< 0.9' lists the number of atoms with occupancy less than 0.9.

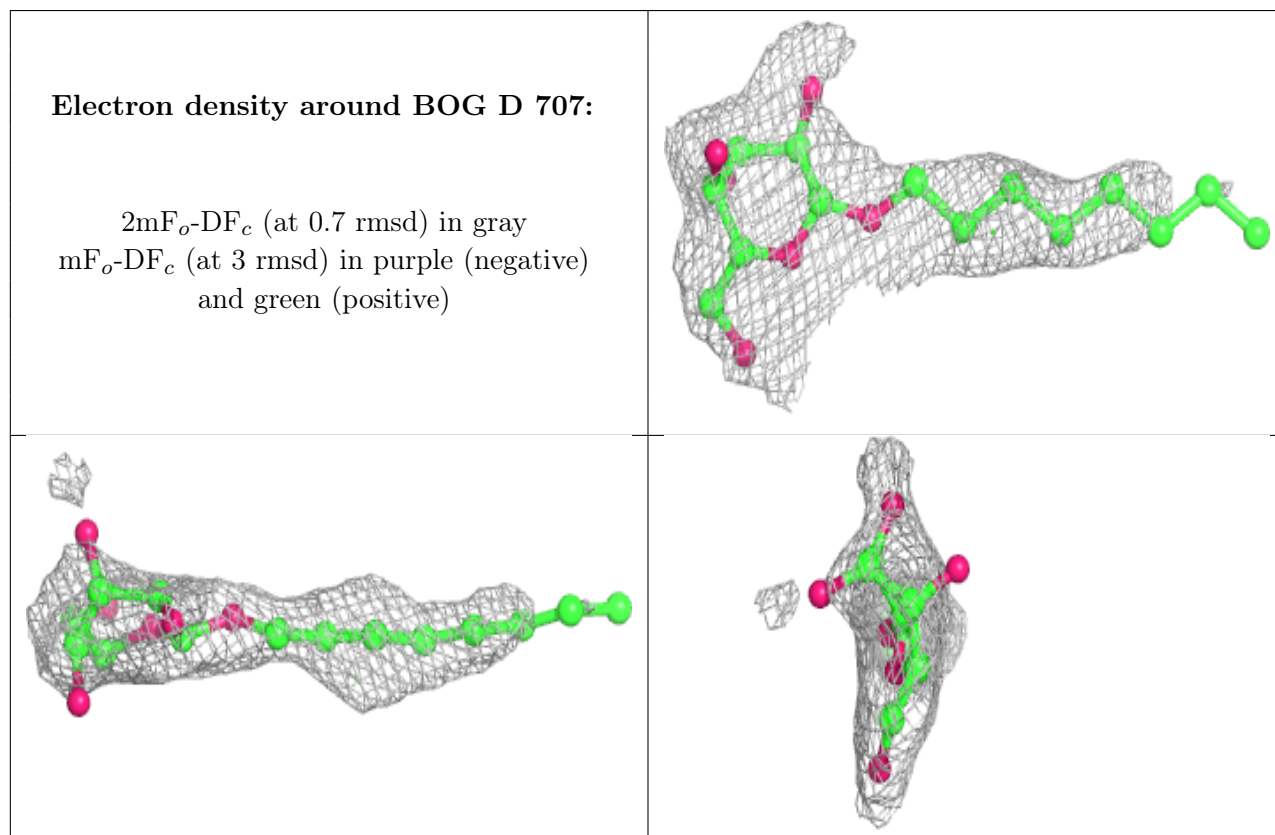
Mol	Type	Chain	Res	Atoms	RSCC	RSR	B-factors(Å ²)	Q<0.9
6	BOG	D	707	20/20	0.75	0.26	55,68,74,75	0
4	NAG	D	702	14/15	0.78	0.17	47,58,62,62	0
6	BOG	C	707	20/20	0.79	0.25	55,65,69,70	0
4	NAG	C	702	14/15	0.81	0.20	46,55,59,60	0
6	BOG	A	707	20/20	0.82	0.22	52,58,64,64	0
4	NAG	B	702	14/15	0.83	0.16	48,54,62,64	0
4	NAG	A	705	14/15	0.85	0.21	43,48,63,63	0
4	NAG	A	702	14/15	0.88	0.13	45,50,60,60	0
4	NAG	B	705	14/15	0.90	0.13	38,48,51,55	0
4	NAG	D	705	14/15	0.90	0.20	45,54,61,64	0

Continued on next page...

Continued from previous page...

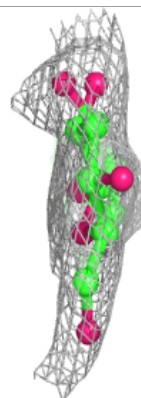
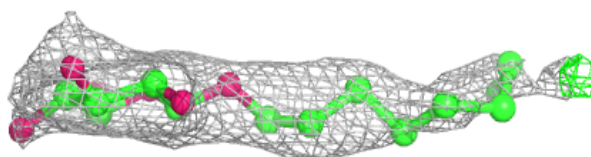
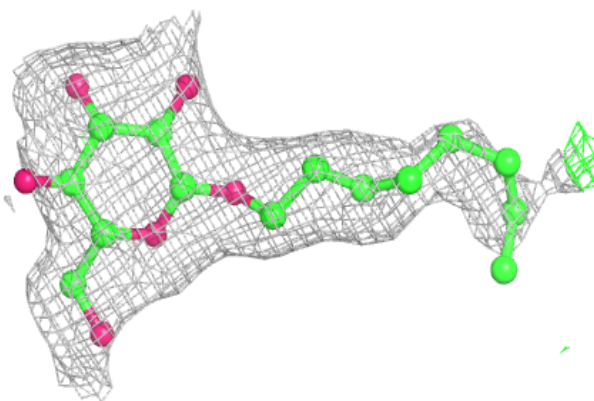
Mol	Type	Chain	Res	Atoms	RSCC	RSR	B-factors(\AA^2)	Q<0.9
5	DXS	D	706	44/44	0.90	0.14	25,40,63,67	0
5	DXS	B	706	44/44	0.91	0.15	28,39,64,66	0
6	BOG	D	708	20/20	0.91	0.14	41,44,46,46	0
5	DXS	A	706	44/44	0.92	0.13	21,38,60,63	0
6	BOG	A	708	20/20	0.93	0.14	23,28,35,35	20
5	DXS	C	706	44/44	0.93	0.14	24,39,61,63	0
4	NAG	C	705	14/15	0.96	0.11	32,40,45,51	0
3	HEM	B	701	43/43	0.97	0.13	20,28,43,50	0
3	HEM	C	701	43/43	0.97	0.13	19,27,48,57	0
3	HEM	D	701	43/43	0.97	0.12	22,31,48,59	0
3	HEM	A	701	43/43	0.97	0.13	25,28,44,57	0

The following is a graphical depiction of the model fit to experimental electron density of all instances of the Ligand of Interest. In addition, ligands with molecular weight > 250 and outliers as shown on the geometry validation Tables will also be included. Each fit is shown from different orientation to approximate a three-dimensional view.

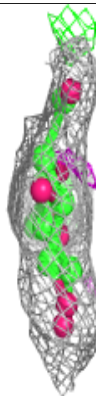
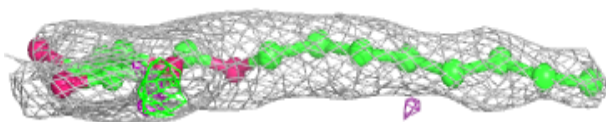
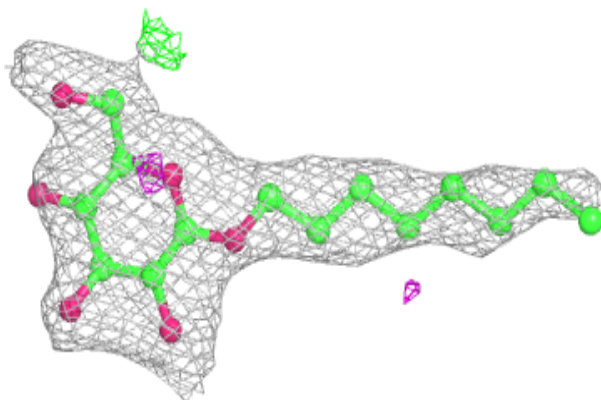


Electron density around BOG C 707:

$2mF_o-DF_c$ (at 0.7 rmsd) in gray
 mF_o-DF_c (at 3 rmsd) in purple (negative)
and green (positive)

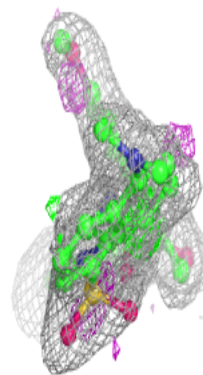
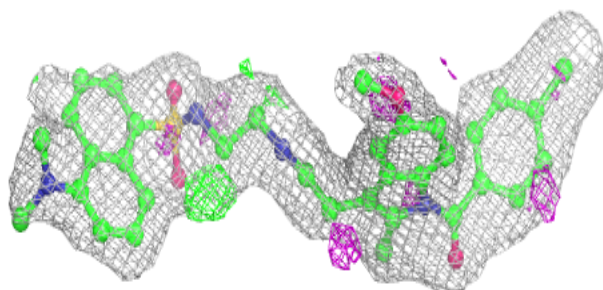
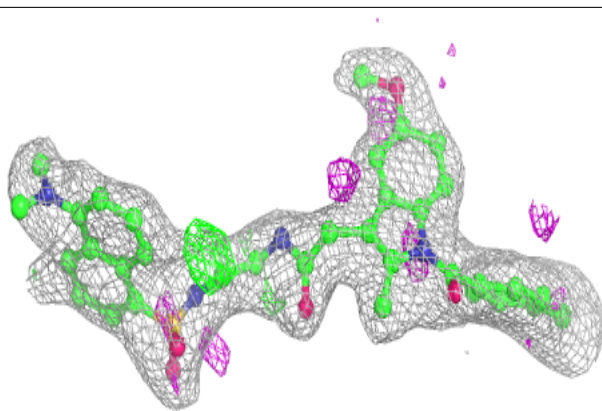
**Electron density around BOG A 707:**

$2mF_o-DF_c$ (at 0.7 rmsd) in gray
 mF_o-DF_c (at 3 rmsd) in purple (negative)
and green (positive)

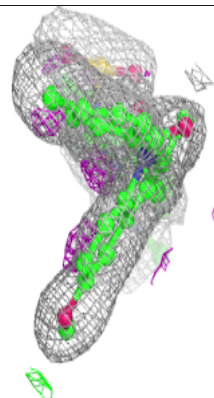
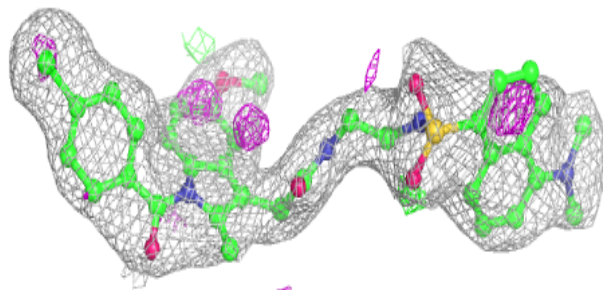
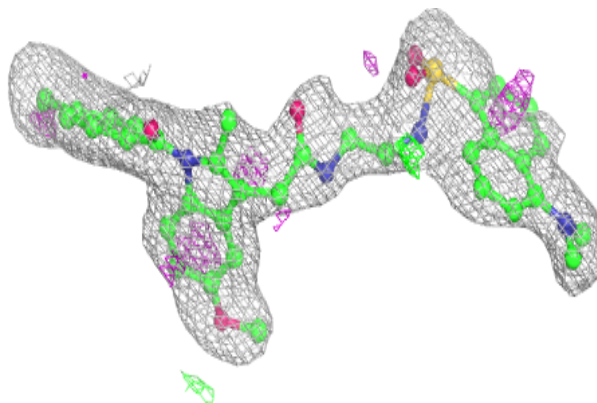


Electron density around DXS D 706:

$2mF_o-DF_c$ (at 0.7 rmsd) in gray
 mF_o-DF_c (at 3 rmsd) in purple (negative)
and green (positive)

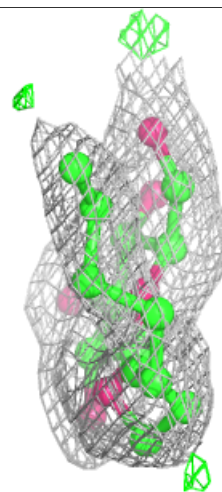
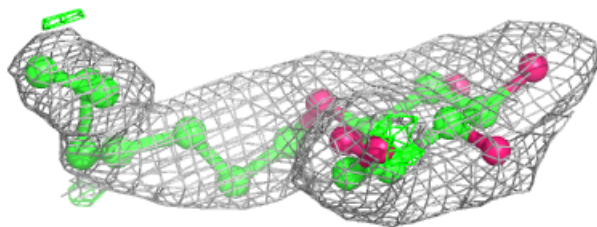
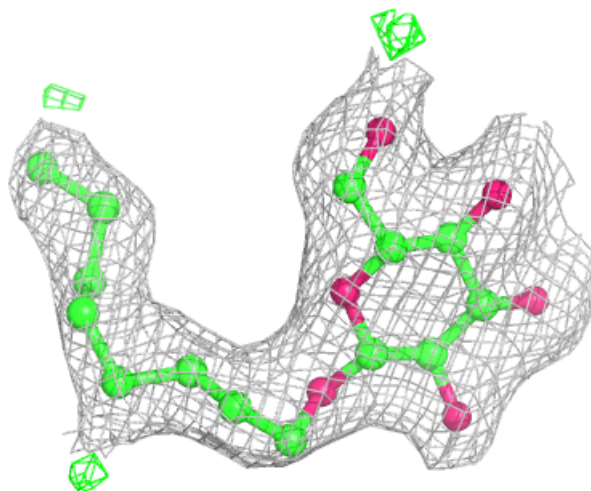
**Electron density around DXS B 706:**

$2mF_o-DF_c$ (at 0.7 rmsd) in gray
 mF_o-DF_c (at 3 rmsd) in purple (negative)
and green (positive)



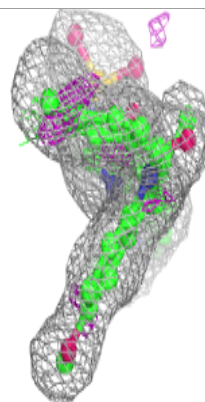
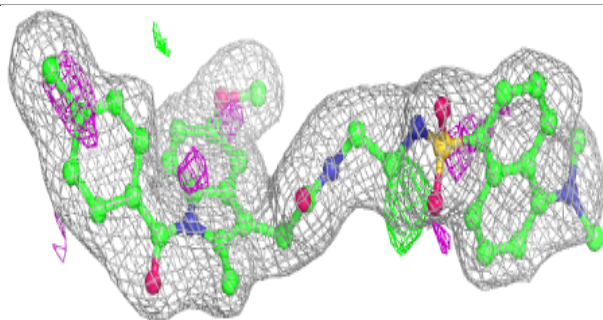
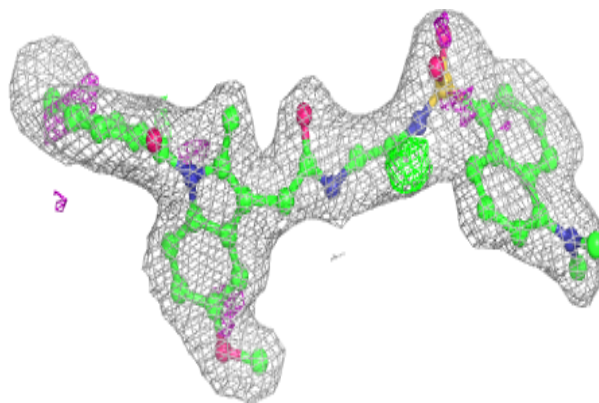
Electron density around BOG D 708:

$2mF_o-DF_c$ (at 0.7 rmsd) in gray
 mF_o-DF_c (at 3 rmsd) in purple (negative)
and green (positive)

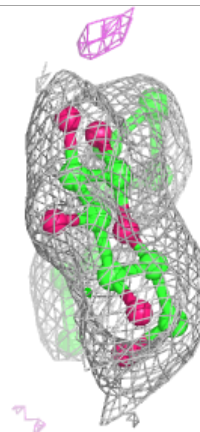
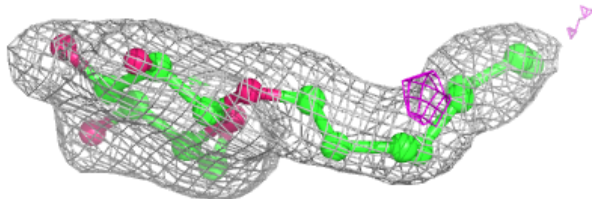
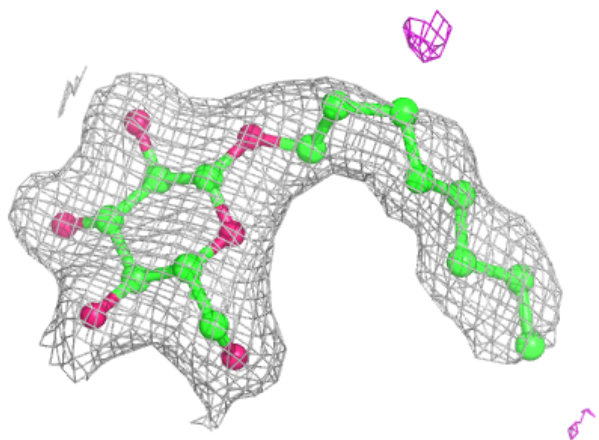


Electron density around DXS A 706:

$2mF_o-DF_c$ (at 0.7 rmsd) in gray
 mF_o-DF_c (at 3 rmsd) in purple (negative)
and green (positive)

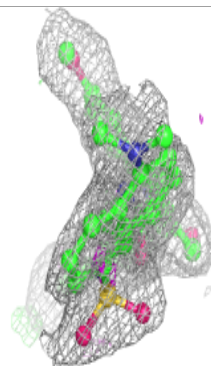
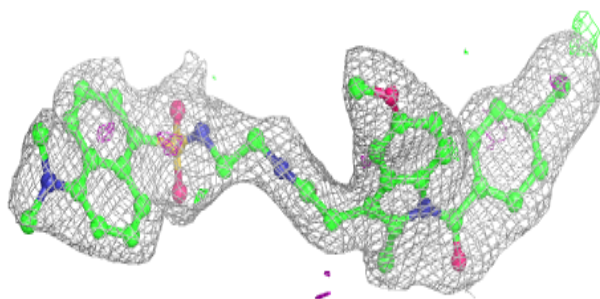
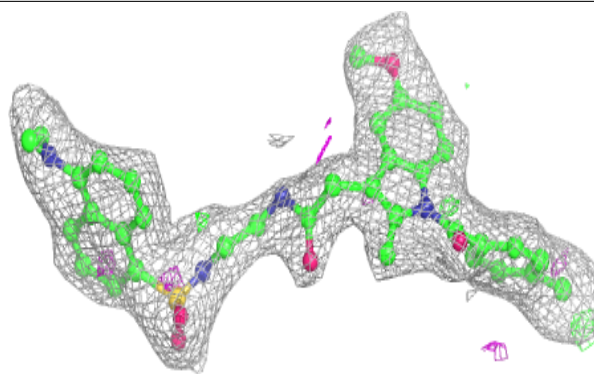
**Electron density around BOG A 708:**

$2mF_o-DF_c$ (at 0.7 rmsd) in gray
 mF_o-DF_c (at 3 rmsd) in purple (negative)
and green (positive)



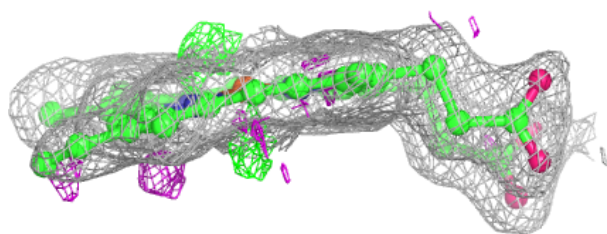
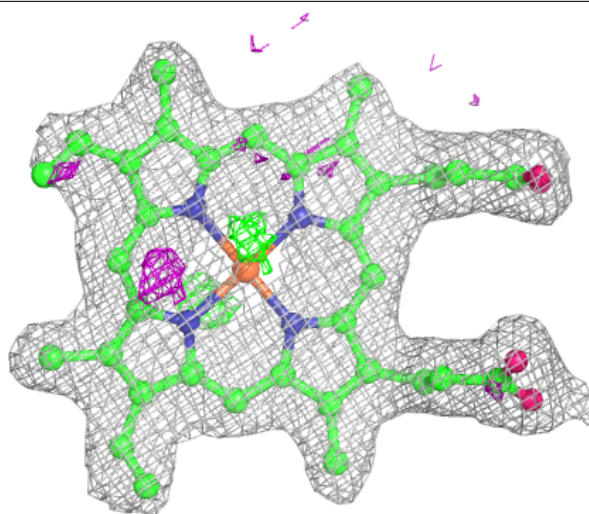
Electron density around DXS C 706:

$2mF_o-DF_c$ (at 0.7 rmsd) in gray
 mF_o-DF_c (at 3 rmsd) in purple (negative)
and green (positive)



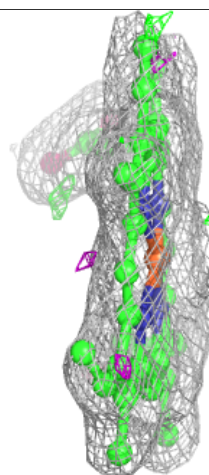
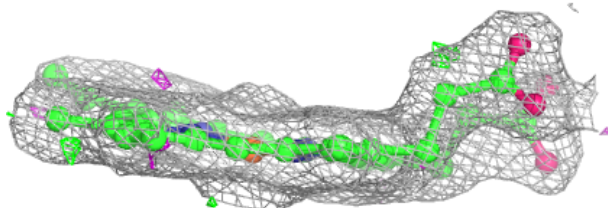
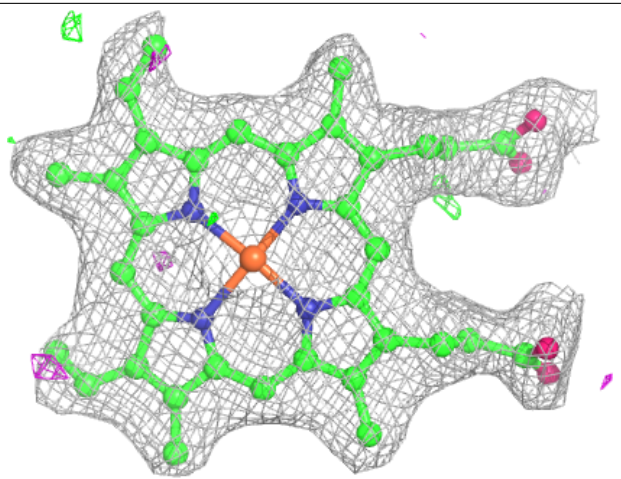
Electron density around HEM B 701:

$2mF_o-DF_c$ (at 0.7 rmsd) in gray
 mF_o-DF_c (at 3 rmsd) in purple (negative)
and green (positive)



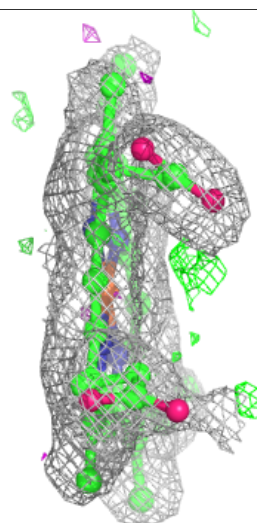
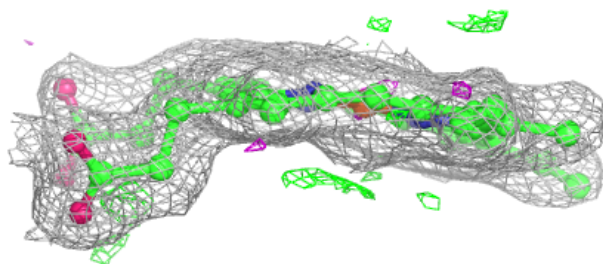
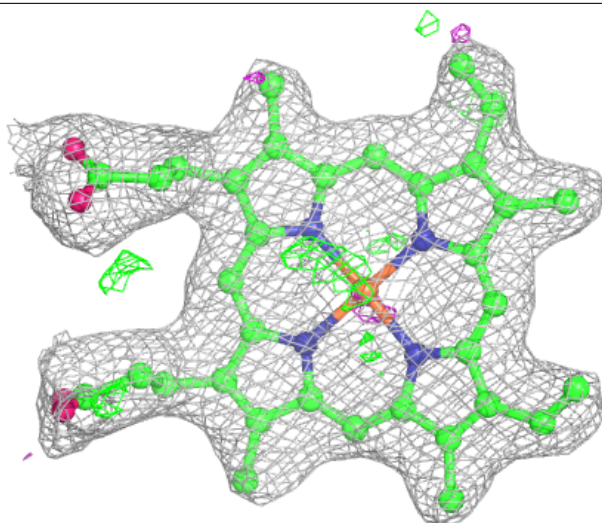
Electron density around HEM C 701:

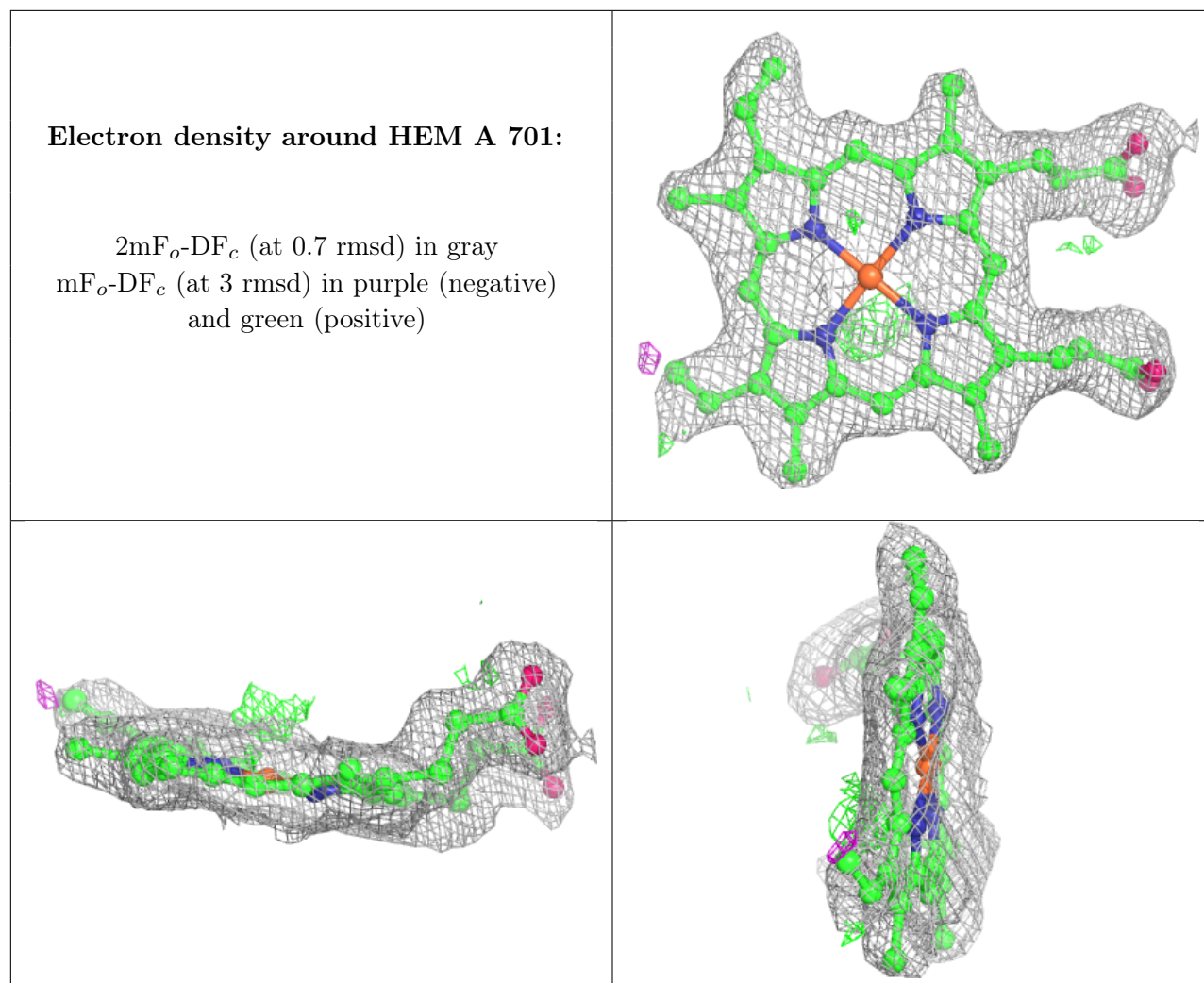
$2mF_o-DF_c$ (at 0.7 rmsd) in gray
 mF_o-DF_c (at 3 rmsd) in purple (negative)
and green (positive)



Electron density around HEM D 701:

$2mF_o-DF_c$ (at 0.7 rmsd) in gray
 mF_o-DF_c (at 3 rmsd) in purple (negative)
and green (positive)





6.5 Other polymers [i](#)

There are no such residues in this entry.