



Full wwPDB X-ray Structure Validation Report ⓘ

Sep 25, 2023 – 10:55 PM EDT

PDB ID : 6BMB
Title : Crystal structure of Arabidopsis Dehydroquinate dehydratase-shikimate dehydrogenase (T381G mutant) in complex with tartrate and shikimate
Authors : Christendat, D.; Peek, J.
Deposited on : 2017-11-14
Resolution : 2.08 Å(reported)

This is a Full wwPDB X-ray Structure Validation Report for a publicly released PDB entry.

We welcome your comments at validation@mail.wwpdb.org

A user guide is available at

<https://www.wwpdb.org/validation/2017/XrayValidationReportHelp>

with specific help available everywhere you see the ⓘ symbol.

The types of validation reports are described at

<http://www.wwpdb.org/validation/2017/FAQs#types>.

The following versions of software and data (see [references ⓘ](#)) were used in the production of this report:

MolProbity : 4.02b-467
Mogul : 1.8.5 (274361), CSD as541be (2020)
Xtriage (Phenix) : 1.13
EDS : 2.35.1
Percentile statistics : 20191225.v01 (using entries in the PDB archive December 25th 2019)
Refmac : 5.8.0158
CCP4 : 7.0.044 (Gargrove)
Ideal geometry (proteins) : Engh & Huber (2001)
Ideal geometry (DNA, RNA) : Parkinson et al. (1996)
Validation Pipeline (wwPDB-VP) : 2.35.1

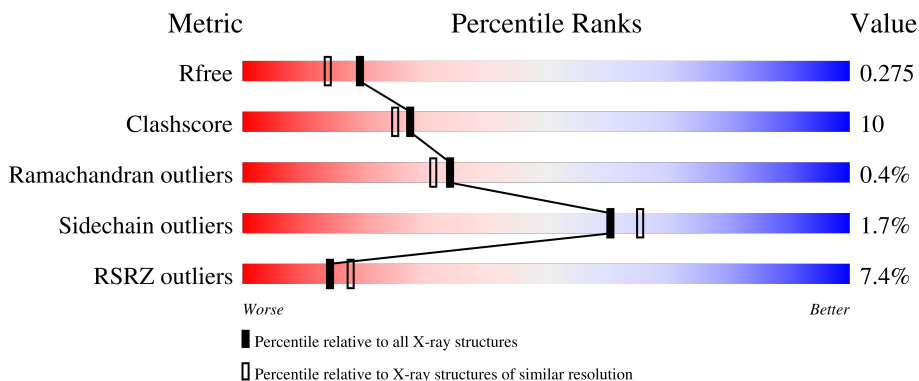
1 Overall quality at a glance

The following experimental techniques were used to determine the structure:

X-RAY DIFFRACTION

The reported resolution of this entry is 2.08 Å.

Percentile scores (ranging between 0-100) for global validation metrics of the entry are shown in the following graphic. The table shows the number of entries on which the scores are based.



Metric	Whole archive (#Entries)	Similar resolution (#Entries, resolution range(Å))
R_{free}	130704	6189 (2.10-2.06)
Clashscore	141614	6738 (2.10-2.06)
Ramachandran outliers	138981	6663 (2.10-2.06)
Sidechain outliers	138945	6664 (2.10-2.06)
RSRZ outliers	127900	6057 (2.10-2.06)

The table below summarises the geometric issues observed across the polymeric chains and their fit to the electron density. The red, orange, yellow and green segments of the lower bar indicate the fraction of residues that contain outliers for ≥ 3 , 2, 1 and 0 types of geometric quality criteria respectively. A grey segment represents the fraction of residues that are not modelled. The numeric value for each fraction is indicated below the corresponding segment, with a dot representing fractions $\leq 5\%$. The upper red bar (where present) indicates the fraction of residues that have poor fit to the electron density. The numeric value is given above the bar.

Mol	Chain	Length	Quality of chain
1	A	523	

2 Entry composition

There are 5 unique types of molecules in this entry. The entry contains 4159 atoms, of which 0 are hydrogens and 0 are deuteriums.

In the tables below, the ZeroOcc column contains the number of atoms modelled with zero occupancy, the AltConf column contains the number of residues with at least one atom in alternate conformation and the Trace column contains the number of residues modelled with at most 2 atoms.

- Molecule 1 is a protein called Bifunctional 3-dehydroquininate dehydratase/shikimate dehydrogenase, chloroplastic.

Mol	Chain	Residues	Atoms					ZeroOcc	AltConf	Trace
			Total	C	N	O	S			
1	A	498	3815	2422	639	737	17	0	0	0

There are 10 discrepancies between the modelled and reference sequences:

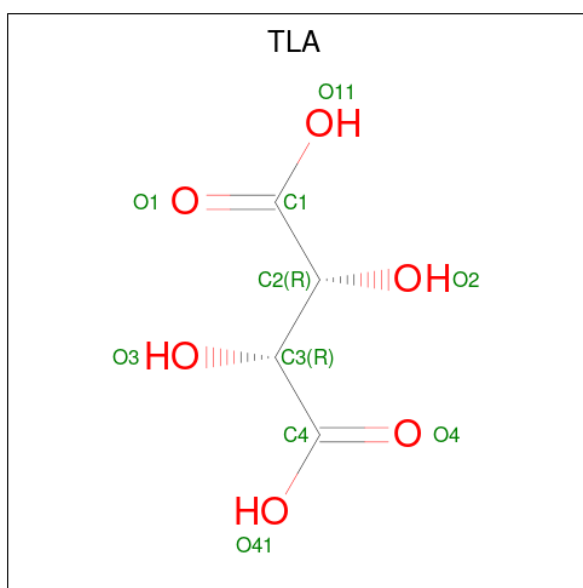
Chain	Residue	Modelled	Actual	Comment	Reference
A	381	GLY	THR	engineered mutation	UNP Q9SQT8
A	604	GLY	-	expression tag	UNP Q9SQT8
A	605	SER	-	expression tag	UNP Q9SQT8
A	606	ARG	-	expression tag	UNP Q9SQT8
A	607	GLU	-	expression tag	UNP Q9SQT8
A	608	ASN	-	expression tag	UNP Q9SQT8
A	609	LEU	-	expression tag	UNP Q9SQT8
A	610	TYR	-	expression tag	UNP Q9SQT8
A	611	PHE	-	expression tag	UNP Q9SQT8
A	612	GLN	-	expression tag	UNP Q9SQT8

- Molecule 2 is SULFATE ION (three-letter code: SO4) (formula: O₄S).



Mol	Chain	Residues	Atoms	ZeroOcc	AltConf
2	A	1	Total O S 5 4 1	0	0
2	A	1	Total O S 5 4 1	0	0

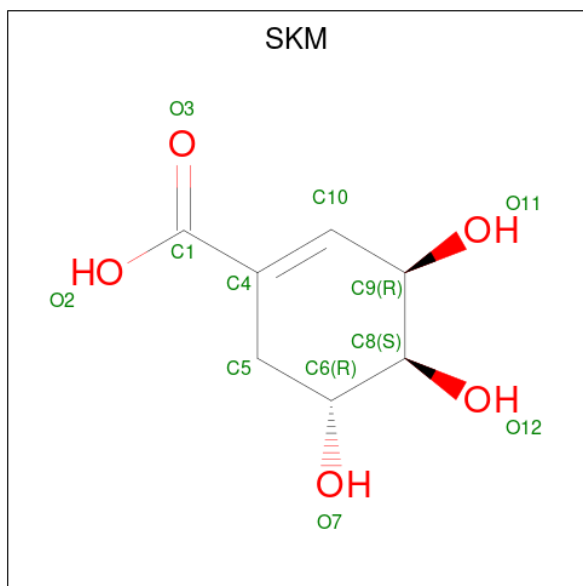
- Molecule 3 is L(+)-TARTARIC ACID (three-letter code: TLA) (formula: $C_4H_6O_6$).



Mol	Chain	Residues	Atoms	ZeroOcc	AltConf
3	A	1	Total C O 10 4 6	0	0

- Molecule 4 is (3R,4S,5R)-3,4,5-TRIHydroxycyclohex-1-ene-1-carboxylic

ACID (three-letter code: SKM) (formula: C₇H₁₀O₅).



Mol	Chain	Residues	Atoms	ZeroOcc	AltConf
4	A	1	Total C O 12 7 5	0	0

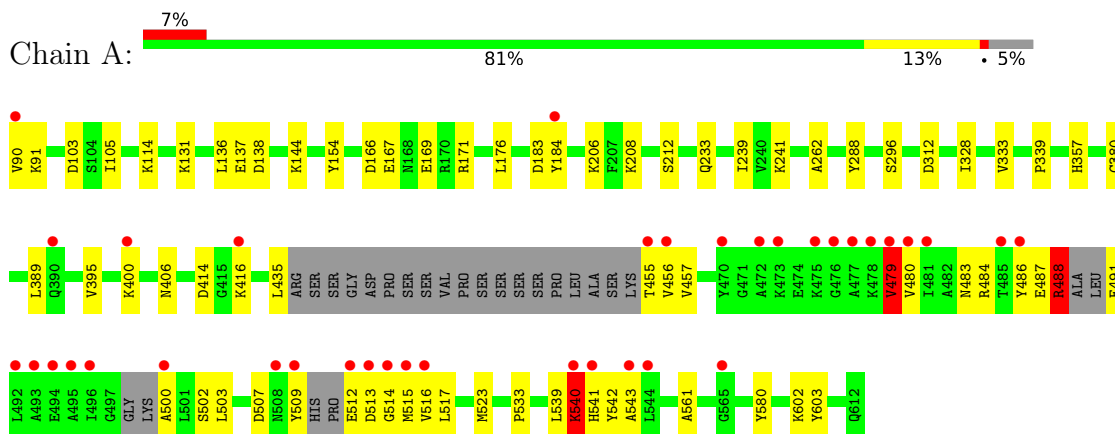
- Molecule 5 is water.

Mol	Chain	Residues	Atoms	ZeroOcc	AltConf
5	A	312	Total O 312 312	0	0

3 Residue-property plots [i](#)

These plots are drawn for all protein, RNA, DNA and oligosaccharide chains in the entry. The first graphic for a chain summarises the proportions of the various outlier classes displayed in the second graphic. The second graphic shows the sequence view annotated by issues in geometry and electron density. Residues are color-coded according to the number of geometric quality criteria for which they contain at least one outlier: green = 0, yellow = 1, orange = 2 and red = 3 or more. A red dot above a residue indicates a poor fit to the electron density ($RSRZ > 2$). Stretches of 2 or more consecutive residues without any outlier are shown as a green connector. Residues present in the sample, but not in the model, are shown in grey.

- Molecule 1: Bifunctional 3-dehydroquinate dehydratase/shikimate dehydrogenase, chloroplastic



4 Data and refinement statistics i

Property	Value	Source
Space group	P 32 2 1	Depositor
Cell constants a, b, c, α , β , γ	96.62Å 96.62Å 115.71Å 90.00° 90.00° 120.00°	Depositor
Resolution (Å)	31.63 – 2.08 31.63 – 2.08	Depositor EDS
% Data completeness (in resolution range)	86.5 (31.63-2.08) 84.9 (31.63-2.08)	Depositor EDS
R_{merge}	0.04	Depositor
R_{sym}	(Not available)	Depositor
$\langle I/\sigma(I) \rangle$ ¹	1.93 (at 2.08Å)	Xtrriage
Refinement program	PHENIX 1.10.1_2155	Depositor
R, R_{free}	0.217 , 0.274 0.217 , 0.275	Depositor DCC
R_{free} test set	1870 reflections (4.93%)	wwPDB-VP
Wilson B-factor (Å ²)	28.0	Xtrriage
Anisotropy	0.215	Xtrriage
Bulk solvent k_{sol} (e/Å ³), B_{sol} (Å ²)	0.36 , 43.5	EDS
L-test for twinning ²	$\langle L \rangle = 0.49$, $\langle L^2 \rangle = 0.32$	Xtrriage
Estimated twinning fraction	0.029 for -h,-k,l	Xtrriage
F_o, F_c correlation	0.94	EDS
Total number of atoms	4159	wwPDB-VP
Average B, all atoms (Å ²)	35.0	wwPDB-VP

Xtrriage's analysis on translational NCS is as follows: *The largest off-origin peak in the Patterson function is 4.41% of the height of the origin peak. No significant pseudotranslation is detected.*

¹Intensities estimated from amplitudes.

²Theoretical values of $\langle |L| \rangle$, $\langle L^2 \rangle$ for acentric reflections are 0.5, 0.333 respectively for untwinned datasets, and 0.375, 0.2 for perfectly twinned datasets.

5 Model quality [i](#)

5.1 Standard geometry [i](#)

Bond lengths and bond angles in the following residue types are not validated in this section: TLA, SO4, SKM

The Z score for a bond length (or angle) is the number of standard deviations the observed value is removed from the expected value. A bond length (or angle) with $|Z| > 5$ is considered an outlier worth inspection. RMSZ is the root-mean-square of all Z scores of the bond lengths (or angles).

Mol	Chain	Bond lengths		Bond angles	
		RMSZ	# $ Z > 5$	RMSZ	# $ Z > 5$
1	A	0.44	1/3882 (0.0%)	0.60	3/5249 (0.1%)

Chiral center outliers are detected by calculating the chiral volume of a chiral center and verifying if the center is modelled as a planar moiety or with the opposite hand. A planarity outlier is detected by checking planarity of atoms in a peptide group, atoms in a mainchain group or atoms of a sidechain that are expected to be planar.

Mol	Chain	#Chirality outliers	#Planarity outliers
1	A	0	1

All (1) bond length outliers are listed below:

Mol	Chain	Res	Type	Atoms	Z	Observed(Å)	Ideal(Å)
1	A	540	LYS	CD-CE	-8.75	1.29	1.51

All (3) bond angle outliers are listed below:

Mol	Chain	Res	Type	Atoms	Z	Observed(°)	Ideal(°)
1	A	488	ARG	NE-CZ-NH2	6.53	123.56	120.30
1	A	488	ARG	NE-CZ-NH1	-5.39	117.60	120.30
1	A	540	LYS	CA-CB-CG	5.07	124.56	113.40

There are no chirality outliers.

All (1) planarity outliers are listed below:

Mol	Chain	Res	Type	Group
1	A	479	VAL	Peptide

5.2 Too-close contacts

In the following table, the Non-H and H(model) columns list the number of non-hydrogen atoms and hydrogen atoms in the chain respectively. The H(added) column lists the number of hydrogen atoms added and optimized by MolProbity. The Clashes column lists the number of clashes within the asymmetric unit, whereas Symm-Clashes lists symmetry-related clashes.

Mol	Chain	Non-H	H(model)	H(added)	Clashes	Symm-Clashes
1	A	3815	0	3808	76	0
2	A	10	0	0	0	0
3	A	10	0	4	2	0
4	A	12	0	9	1	0
5	A	312	0	0	17	0
All	All	4159	0	3821	77	0

The all-atom clashscore is defined as the number of clashes found per 1000 atoms (including hydrogen atoms). The all-atom clashscore for this structure is 10.

All (77) close contacts within the same asymmetric unit are listed below, sorted by their clash magnitude.

Atom-1	Atom-2	Interatomic distance (Å)	Clash overlap (Å)
1:A:455:THR:HA	1:A:479:VAL:HG21	1.50	0.92
1:A:456:VAL:HA	1:A:516:VAL:CG1	2.05	0.86
1:A:487:GLU:HG2	1:A:488:ARG:NH2	1.93	0.81
1:A:144:LYS:NZ	5:A:805:HOH:O	2.15	0.79
1:A:455:THR:O	1:A:516:VAL:HG12	1.84	0.78
1:A:523:MET:SD	5:A:968:HOH:O	2.42	0.77
1:A:487:GLU:HG2	1:A:488:ARG:HH21	1.53	0.73
1:A:241:LYS:NZ	3:A:703:TLA:O1	2.21	0.73
1:A:184:TYR:OH	1:A:288:TYR:OH	2.07	0.72
1:A:488:ARG:HH12	1:A:491:GLU:HG3	1.53	0.72
1:A:455:THR:N	5:A:809:HOH:O	2.23	0.71
1:A:509:TYR:O	5:A:801:HOH:O	2.09	0.71
1:A:91:LYS:NZ	5:A:808:HOH:O	2.22	0.70
1:A:507:ASP:OD2	5:A:803:HOH:O	2.11	0.69
3:A:703:TLA:O11	5:A:802:HOH:O	2.10	0.68
1:A:479:VAL:HG12	1:A:480:VAL:H	1.58	0.67
1:A:602:LYS:HE3	1:A:603:TYR:CZ	2.31	0.66
1:A:456:VAL:HG22	1:A:516:VAL:HG11	1.78	0.65
1:A:312:ASP:OD2	5:A:804:HOH:O	2.14	0.65
1:A:103:ASP:HB2	1:A:131:LYS:HG3	1.80	0.64
1:A:136:LEU:O	5:A:806:HOH:O	2.16	0.63
1:A:455:THR:CA	1:A:479:VAL:HG21	2.27	0.62

Continued on next page...

Continued from previous page...

Atom-1	Atom-2	Interatomic distance (Å)	Clash overlap (Å)
1:A:414:ASP:OD1	1:A:414:ASP:N	2.33	0.60
1:A:479:VAL:HG12	1:A:480:VAL:N	2.16	0.60
1:A:541:HIS:ND1	5:A:801:HOH:O	2.32	0.60
1:A:435:LEU:O	5:A:807:HOH:O	2.17	0.59
1:A:339:PRO:HG2	1:A:357:HIS:CE1	2.39	0.58
1:A:487:GLU:O	1:A:491:GLU:N	2.39	0.56
1:A:414:ASP:OD2	1:A:416:LYS:HE2	2.06	0.56
1:A:488:ARG:NH1	1:A:491:GLU:OE2	2.39	0.56
1:A:105:ILE:HD13	1:A:138:ASP:HB3	1.88	0.55
1:A:515:MET:HG2	1:A:541:HIS:O	2.06	0.55
1:A:540:LYS:HE3	1:A:541:HIS:CD2	2.41	0.55
1:A:90:VAL:HG11	1:A:262:ALA:O	2.07	0.54
1:A:456:VAL:H	1:A:479:VAL:CB	2.21	0.54
1:A:456:VAL:H	1:A:479:VAL:HG21	1.74	0.53
1:A:456:VAL:H	1:A:479:VAL:CG2	2.23	0.52
1:A:136:LEU:HB2	1:A:176:LEU:HD21	1.92	0.52
1:A:515:MET:O	1:A:543:ALA:N	2.37	0.52
1:A:184:TYR:HE1	1:A:239:ILE:CD1	2.24	0.50
1:A:500:ALA:N	5:A:832:HOH:O	2.45	0.49
1:A:486:TYR:HD1	1:A:502:SER:N	2.11	0.49
1:A:488:ARG:NH1	1:A:491:GLU:HG3	2.26	0.48
1:A:512:GLU:OE1	1:A:514:GLY:N	2.47	0.48
1:A:484:ARG:NH1	5:A:837:HOH:O	2.47	0.48
1:A:183:ASP:OD1	1:A:206:LYS:HE2	2.14	0.47
1:A:512:GLU:CD	1:A:513:ASP:H	2.18	0.47
1:A:540:LYS:HD2	1:A:540:LYS:C	2.35	0.47
1:A:456:VAL:H	1:A:479:VAL:HB	1.80	0.47
1:A:540:LYS:HD2	1:A:541:HIS:HD2	1.80	0.46
1:A:517:LEU:HB2	1:A:542:TYR:CE2	2.49	0.46
1:A:487:GLU:CG	1:A:488:ARG:NH2	2.74	0.46
1:A:456:VAL:HA	1:A:516:VAL:HG12	1.95	0.45
1:A:541:HIS:CE1	5:A:801:HOH:O	2.68	0.45
1:A:540:LYS:CE	1:A:541:HIS:CD2	3.00	0.44
1:A:456:VAL:HA	1:A:516:VAL:HG11	1.93	0.44
1:A:380:CYS:HB2	1:A:406:ASN:HA	1.99	0.44
1:A:91:LYS:HD3	1:A:91:LYS:HA	1.71	0.44
1:A:512:GLU:HB3	1:A:515:MET:SD	2.58	0.44
1:A:208:LYS:NZ	5:A:843:HOH:O	2.51	0.44
1:A:400:LYS:HE3	1:A:400:LYS:HB2	1.71	0.43
1:A:389:LEU:HD12	1:A:395:VAL:HG21	2.01	0.43
1:A:457:VAL:HB	1:A:517:LEU:HD12	2.01	0.42

Continued on next page...

Continued from previous page...

Atom-1	Atom-2	Interatomic distance (Å)	Clash overlap (Å)
1:A:483:ASN:O	1:A:503:LEU:HB2	2.18	0.42
1:A:488:ARG:HH11	1:A:488:ARG:HD3	1.66	0.42
1:A:539:LEU:HD13	1:A:561:ALA:HA	2.01	0.42
1:A:184:TYR:CD1	1:A:208:LYS:HB2	2.56	0.41
1:A:328:ILE:HD13	4:A:704:SKM:H51	2.01	0.41
1:A:212:SER:HA	1:A:241:LYS:O	2.21	0.41
1:A:456:VAL:HA	1:A:516:VAL:HG13	1.99	0.41
1:A:487:GLU:HG2	1:A:488:ARG:CZ	2.46	0.41
1:A:212:SER:HB3	1:A:241:LYS:HD3	2.03	0.41
1:A:167:GLU:O	1:A:171:ARG:HG3	2.21	0.40
1:A:233:GLN:HG2	5:A:1032:HOH:O	2.21	0.40
1:A:533:PRO:HA	5:A:968:HOH:O	2.21	0.40
1:A:166:ASP:OD2	1:A:169:GLU:HG3	2.22	0.40
1:A:602:LYS:HE3	1:A:603:TYR:OH	2.22	0.40

There are no symmetry-related clashes.

5.3 Torsion angles [i](#)

5.3.1 Protein backbone [i](#)

In the following table, the Percentiles column shows the percent Ramachandran outliers of the chain as a percentile score with respect to all X-ray entries followed by that with respect to entries of similar resolution.

The Analysed column shows the number of residues for which the backbone conformation was analysed, and the total number of residues.

Mol	Chain	Analysed	Favoured	Allowed	Outliers	Percentiles
1	A	488/523 (93%)	463 (95%)	23 (5%)	2 (0%)	34 31

All (2) Ramachandran outliers are listed below:

Mol	Chain	Res	Type
1	A	137	GLU
1	A	479	VAL

5.3.2 Protein sidechains [i](#)

In the following table, the Percentiles column shows the percent sidechain outliers of the chain as a percentile score with respect to all X-ray entries followed by that with respect to entries of similar resolution.

The Analysed column shows the number of residues for which the sidechain conformation was analysed, and the total number of residues.

Mol	Chain	Analysed	Rotameric	Outliers	Percentiles
1	A	412/438 (94%)	405 (98%)	7 (2%)	60 65

All (7) residues with a non-rotameric sidechain are listed below:

Mol	Chain	Res	Type
1	A	114	LYS
1	A	154	TYR
1	A	296	SER
1	A	333	VAL
1	A	488	ARG
1	A	540	LYS
1	A	580	TYR

Sometimes sidechains can be flipped to improve hydrogen bonding and reduce clashes. All (1) such sidechains are listed below:

Mol	Chain	Res	Type
1	A	541	HIS

5.3.3 RNA [i](#)

There are no RNA molecules in this entry.

5.4 Non-standard residues in protein, DNA, RNA chains [i](#)

There are no non-standard protein/DNA/RNA residues in this entry.

5.5 Carbohydrates [i](#)

There are no monosaccharides in this entry.

5.6 Ligand geometry

4 ligands are modelled in this entry.

In the following table, the Counts columns list the number of bonds (or angles) for which Mogul statistics could be retrieved, the number of bonds (or angles) that are observed in the model and the number of bonds (or angles) that are defined in the Chemical Component Dictionary. The Link column lists molecule types, if any, to which the group is linked. The Z score for a bond length (or angle) is the number of standard deviations the observed value is removed from the expected value. A bond length (or angle) with $|Z| > 2$ is considered an outlier worth inspection. RMSZ is the root-mean-square of all Z scores of the bond lengths (or angles).

Mol	Type	Chain	Res	Link	Bond lengths			Bond angles		
					Counts	RMSZ	# Z > 2	Counts	RMSZ	# Z > 2
3	TLA	A	703	-	9,9,9	2.40	3 (33%)	12,12,12	2.58	5 (41%)
4	SKM	A	704	-	12,12,12	1.62	2 (16%)	16,17,17	1.04	0
2	SO4	A	701	-	4,4,4	0.18	0	6,6,6	0.25	0
2	SO4	A	702	-	4,4,4	0.08	0	6,6,6	0.24	0

In the following table, the Chirals column lists the number of chiral outliers, the number of chiral centers analysed, the number of these observed in the model and the number defined in the Chemical Component Dictionary. Similar counts are reported in the Torsion and Rings columns. '-' means no outliers of that kind were identified.

Mol	Type	Chain	Res	Link	Chirals	Torsions	Rings
3	TLA	A	703	-	-	0/12/12/12	-
4	SKM	A	704	-	-	0/4/20/20	0/1/1/1

All (5) bond length outliers are listed below:

Mol	Chain	Res	Type	Atoms	Z	Observed(Å)	Ideal(Å)
3	A	703	TLA	C3-C4	4.76	1.59	1.52
3	A	703	TLA	C2-C1	3.59	1.57	1.52
4	A	704	SKM	C6-C8	3.31	1.57	1.52
3	A	703	TLA	O41-C4	-2.29	1.23	1.30
4	A	704	SKM	C5-C4	-2.22	1.47	1.51

All (5) bond angle outliers are listed below:

Mol	Chain	Res	Type	Atoms	Z	Observed(°)	Ideal(°)
3	A	703	TLA	O41-C4-C3	4.42	125.21	113.27
3	A	703	TLA	O1-C1-C2	-4.38	110.11	121.63
3	A	703	TLA	O11-C1-C2	4.25	124.75	113.27
3	A	703	TLA	O4-C4-C3	-4.02	111.05	121.63
3	A	703	TLA	O3-C3-C2	2.20	114.60	110.23

There are no chirality outliers.

There are no torsion outliers.

There are no ring outliers.

2 monomers are involved in 3 short contacts:

Mol	Chain	Res	Type	Clashes	Symm-Clashes
3	A	703	TLA	2	0
4	A	704	SKM	1	0

5.7 Other polymers [i](#)

There are no such residues in this entry.

5.8 Polymer linkage issues [i](#)

There are no chain breaks in this entry.

6 Fit of model and data

6.1 Protein, DNA and RNA chains

In the following table, the column labelled ‘#RSRZ > 2’ contains the number (and percentage) of RSRZ outliers, followed by percent RSRZ outliers for the chain as percentile scores relative to all X-ray entries and entries of similar resolution. The OWAB column contains the minimum, median, 95th percentile and maximum values of the occupancy-weighted average B-factor per residue. The column labelled ‘Q < 0.9’ lists the number of (and percentage) of residues with an average occupancy less than 0.9.

Mol	Chain	Analysed	<RSRZ>	#RSRZ>2	OWAB(Å ²)	Q<0.9
1	A	498/523 (95%)	0.27	37 (7%) 14 18	20, 32, 63, 77	0

All (37) RSRZ outliers are listed below:

Mol	Chain	Res	Type	RSRZ
1	A	476	GLY	7.0
1	A	493	ALA	5.9
1	A	514	GLY	5.8
1	A	509	TYR	5.5
1	A	513	ASP	4.7
1	A	496	ILE	4.5
1	A	456	VAL	4.5
1	A	486	TYR	4.5
1	A	479	VAL	4.2
1	A	543	ALA	4.1
1	A	477	ALA	3.9
1	A	512	GLU	3.8
1	A	485	THR	3.7
1	A	90	VAL	3.5
1	A	540	LYS	3.5
1	A	470	TYR	3.5
1	A	478	LYS	3.1
1	A	541	HIS	3.1
1	A	492	LEU	3.1
1	A	400	LYS	2.9
1	A	544	LEU	2.8
1	A	565	GLY	2.7
1	A	515	MET	2.7
1	A	516	VAL	2.5
1	A	416	LYS	2.4
1	A	480	VAL	2.4
1	A	508	ASN	2.4

Continued on next page...

Continued from previous page...

Mol	Chain	Res	Type	RSRZ
1	A	500	ALA	2.3
1	A	184	TYR	2.3
1	A	475	LYS	2.3
1	A	494	GLU	2.2
1	A	473	LYS	2.1
1	A	390	GLN	2.1
1	A	495	ALA	2.1
1	A	455	THR	2.0
1	A	472	ALA	2.0
1	A	481	ILE	2.0

6.2 Non-standard residues in protein, DNA, RNA chains [i](#)

There are no non-standard protein/DNA/RNA residues in this entry.

6.3 Carbohydrates [i](#)

There are no monosaccharides in this entry.

6.4 Ligands [i](#)

In the following table, the Atoms column lists the number of modelled atoms in the group and the number defined in the chemical component dictionary. The B-factors column lists the minimum, median, 95th percentile and maximum values of B factors of atoms in the group. The column labelled 'Q< 0.9' lists the number of atoms with occupancy less than 0.9.

Mol	Type	Chain	Res	Atoms	RSCC	RSR	B-factors(Å ²)	Q<0.9
2	SO4	A	702	5/5	0.91	0.22	43,46,59,63	0
3	TLA	A	703	10/10	0.91	0.18	25,32,40,40	0
4	SKM	A	704	12/12	0.94	0.17	24,29,32,37	0
2	SO4	A	701	5/5	0.96	0.15	40,44,48,49	0

6.5 Other polymers [i](#)

There are no such residues in this entry.