



# Full wwPDB X-ray Structure Validation Report ⓘ

May 13, 2020 – 12:14 am BST

PDB ID : 3BNM  
Title : Crystal structure of polyamine oxidase FMS1 from *Saccharomyces cerevisiae* in complex with bis-(3R,3'R)-methylated spermine  
Authors : Huang, Q.; Hao, Q.  
Deposited on : 2007-12-14  
Resolution : 2.20 Å(reported)

This is a Full wwPDB X-ray Structure Validation Report for a publicly released PDB entry.

We welcome your comments at [validation@mail.wwpdb.org](mailto:validation@mail.wwpdb.org)

A user guide is available at

<https://www.wwpdb.org/validation/2017/XrayValidationReportHelp>

with specific help available everywhere you see the ⓘ symbol.

---

The following versions of software and data (see [references ⓘ](#)) were used in the production of this report:

MolProbity : 4.02b-467  
Mogul : 1.8.5 (274361), CSD as541be (2020)  
Xtriage (Phenix) : 1.13  
EDS : 2.11  
buster-report : 1.1.7 (2018)  
Percentile statistics : 20191225.v01 (using entries in the PDB archive December 25th 2019)  
Refmac : 5.8.0158  
CCP4 : 7.0.044 (Gargrove)  
Ideal geometry (proteins) : Engh & Huber (2001)  
Ideal geometry (DNA, RNA) : Parkinson et al. (1996)  
Validation Pipeline (wwPDB-VP) : 2.11

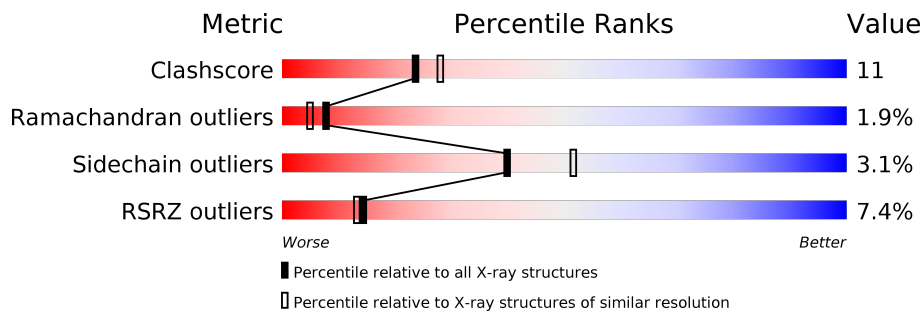
# 1 Overall quality at a glance

The following experimental techniques were used to determine the structure:

*X-RAY DIFFRACTION*

The reported resolution of this entry is 2.20 Å.

Percentile scores (ranging between 0-100) for global validation metrics of the entry are shown in the following graphic. The table shows the number of entries on which the scores are based.



Metric	Whole archive (#Entries)	Similar resolution (#Entries, resolution range(Å))
Clashscore	141614	5594 (2.20-2.20)
Ramachandran outliers	138981	5503 (2.20-2.20)
Sidechain outliers	138945	5504 (2.20-2.20)
RSRZ outliers	127900	4800 (2.20-2.20)

The table below summarises the geometric issues observed across the polymeric chains and their fit to the electron density. The red, orange, yellow and green segments on the lower bar indicate the fraction of residues that contain outliers for  $\geq 3$ , 2, 1 and 0 types of geometric quality criteria respectively. A grey segment represents the fraction of residues that are not modelled. The numeric value for each fraction is indicated below the corresponding segment, with a dot representing fractions  $\leq 5\%$ . The upper red bar (where present) indicates the fraction of residues that have poor fit to the electron density. The numeric value is given above the bar.

Mol	Chain	Length	Quality of chain
1	A	516	 5% 77% 17% . .
1	B	516	 9% 72% 23% . .

## 2 Entry composition [i](#)

There are 4 unique types of molecules in this entry. The entry contains 8104 atoms, of which 0 are hydrogens and 0 are deuteriums.

In the tables below, the ZeroOcc column contains the number of atoms modelled with zero occupancy, the AltConf column contains the number of residues with at least one atom in alternate conformation and the Trace column contains the number of residues modelled with at most 2 atoms.

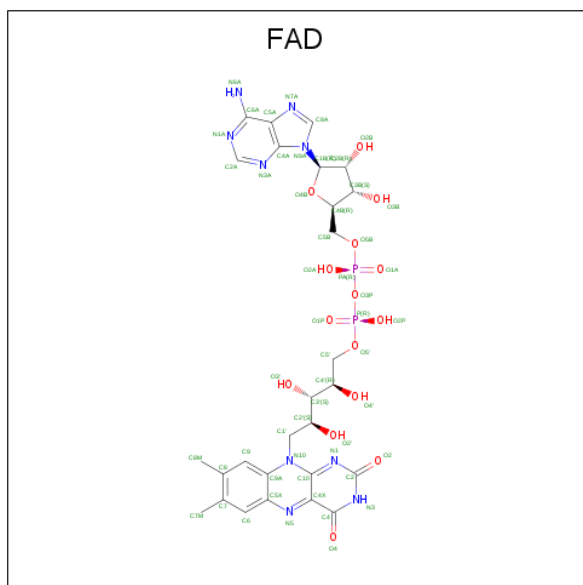
- Molecule 1 is a protein called Polyamine oxidase FMS1.

Mol	Chain	Residues	Atoms					ZeroOcc	AltConf	Trace
			Total	C	N	O	S			
1	B	499	3845	2425	668	730	22	0	0	0
1	A	497	3900	2468	682	728	22	0	0	0

There are 16 discrepancies between the modelled and reference sequences:

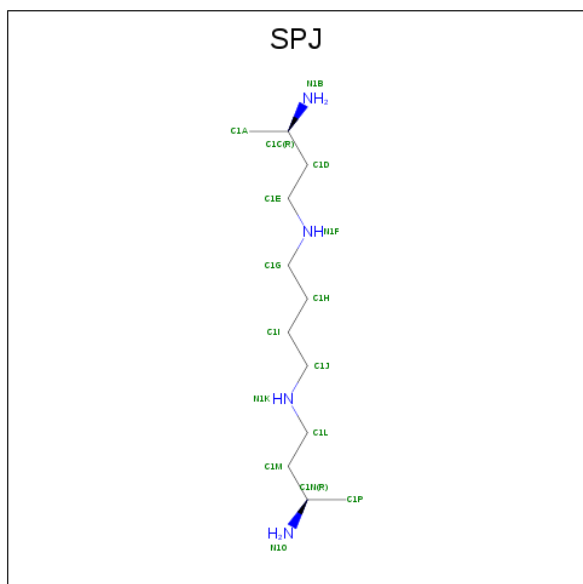
Chain	Residue	Modelled	Actual	Comment	Reference
B	509	LEU	-	EXPRESSION TAG	UNP P50264
B	510	GLU	-	EXPRESSION TAG	UNP P50264
B	511	HIS	-	EXPRESSION TAG	UNP P50264
B	512	HIS	-	EXPRESSION TAG	UNP P50264
B	513	HIS	-	EXPRESSION TAG	UNP P50264
B	514	HIS	-	EXPRESSION TAG	UNP P50264
B	515	HIS	-	EXPRESSION TAG	UNP P50264
B	516	HIS	-	EXPRESSION TAG	UNP P50264
A	509	LEU	-	EXPRESSION TAG	UNP P50264
A	510	GLU	-	EXPRESSION TAG	UNP P50264
A	511	HIS	-	EXPRESSION TAG	UNP P50264
A	512	HIS	-	EXPRESSION TAG	UNP P50264
A	513	HIS	-	EXPRESSION TAG	UNP P50264
A	514	HIS	-	EXPRESSION TAG	UNP P50264
A	515	HIS	-	EXPRESSION TAG	UNP P50264
A	516	HIS	-	EXPRESSION TAG	UNP P50264

- Molecule 2 is FLAVIN-ADENINE DINUCLEOTIDE (three-letter code: FAD) (formula:  $C_{27}H_{33}N_9O_{15}P_2$ ).



Mol	Chain	Residues	Atoms				ZeroOcc	AltConf	
			Total	C	N	O			P
2	B	1	53	27	9	15	2	0	0
2	A	1	53	27	9	15	2	0	0

- Molecule 3 is (3R,3'R)-N 1 ,N 1 '-butane-1,4-diyldibutane-1,3-diamine (three-letter code: SPJ) (formula: C<sub>12</sub>H<sub>30</sub>N<sub>4</sub>).



Mol	Chain	Residues	Atoms			ZeroOcc	AltConf
			Total	C	N		
3	B	1	16	12	4	0	0

*Continued on next page...*

*Continued from previous page...*

Mol	Chain	Residues	Atoms			ZeroOcc	AltConf
			Total	C	N		
3	A	1	16	12	4	0	0

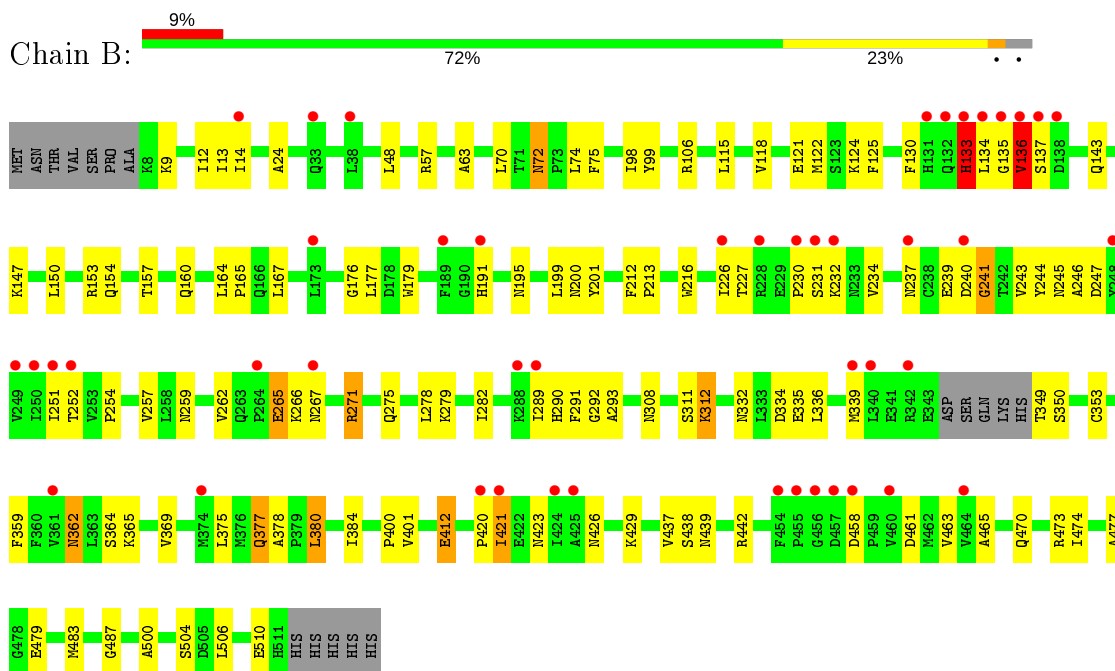
- Molecule 4 is water.

Mol	Chain	Residues	Atoms		ZeroOcc	AltConf
4	B	104	Total	O	0	0
			104	104		
4	A	117	Total	O	0	0
			117	117		

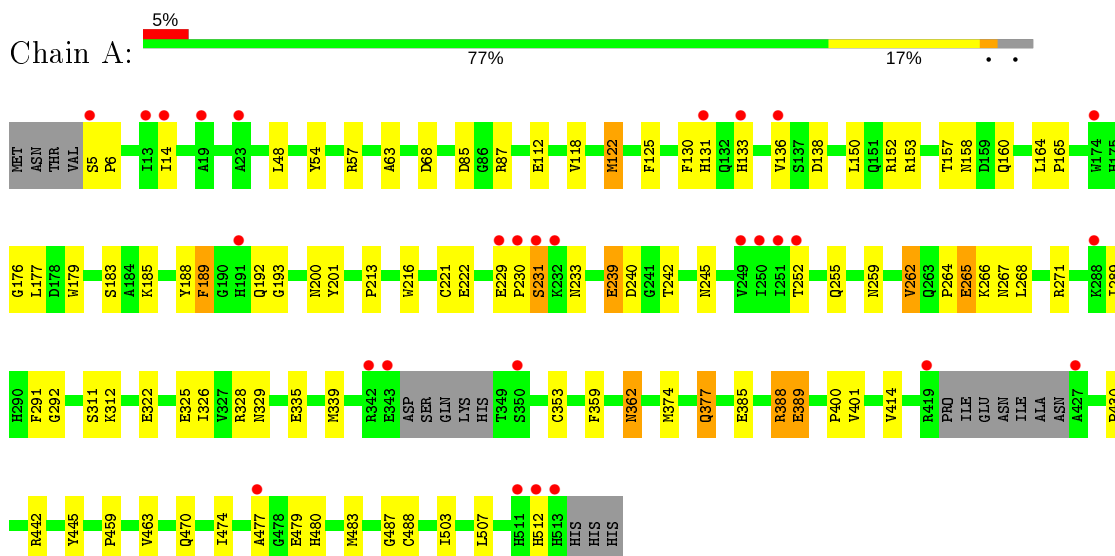
### 3 Residue-property plots

These plots are drawn for all protein, RNA and DNA chains in the entry. The first graphic for a chain summarises the proportions of the various outlier classes displayed in the second graphic. The second graphic shows the sequence view annotated by issues in geometry and electron density. Residues are color-coded according to the number of geometric quality criteria for which they contain at least one outlier: green = 0, yellow = 1, orange = 2 and red = 3 or more. A red dot above a residue indicates a poor fit to the electron density ( $RSRZ > 2$ ). Stretches of 2 or more consecutive residues without any outlier are shown as a green connector. Residues present in the sample, but not in the model, are shown in grey.

- Molecule 1: Polyamine oxidase FMS1



- Molecule 1: Polyamine oxidase FMS1



## 4 Data and refinement statistics

Property	Value	Source
Space group	C 1 2 1	Depositor
Cell constants a, b, c, $\alpha$ , $\beta$ , $\gamma$	162.24Å 103.97Å 77.58Å 90.00° 94.90° 90.00°	Depositor
Resolution (Å)	30.00 – 2.20 29.65 – 2.20	Depositor EDS
% Data completeness (in resolution range)	91.7 (30.00-2.20) 86.0 (29.65-2.20)	Depositor EDS
$R_{merge}$	0.06	Depositor
$R_{sym}$	(Not available)	Depositor
$\langle I/\sigma(I) \rangle$ <sup>1</sup>	2.16 (at 2.20Å)	Xtrriage
Refinement program	CNS	Depositor
R, $R_{free}$	0.226 , 0.274 0.224 , (Not available)	Depositor DCC
$R_{free}$ test set	No test flags present.	wwPDB-VP
Wilson B-factor (Å <sup>2</sup> )	30.5	Xtrriage
Anisotropy	0.295	Xtrriage
Bulk solvent $k_{sol}$ (e/Å <sup>3</sup> ), $B_{sol}$ (Å <sup>2</sup> )	0.33 , 47.7	EDS
L-test for twinning <sup>2</sup>	$\langle  L  \rangle = 0.49$ , $\langle L^2 \rangle = 0.33$	Xtrriage
Estimated twinning fraction	No twinning to report.	Xtrriage
$F_o, F_c$ correlation	0.94	EDS
Total number of atoms	8104	wwPDB-VP
Average B, all atoms (Å <sup>2</sup> )	39.0	wwPDB-VP

Xtrriage's analysis on translational NCS is as follows: *The largest off-origin peak in the Patterson function is 3.55% of the height of the origin peak. No significant pseudotranslation is detected.*

<sup>1</sup>Intensities estimated from amplitudes.

<sup>2</sup>Theoretical values of  $\langle |L| \rangle$ ,  $\langle L^2 \rangle$  for acentric reflections are 0.5, 0.333 respectively for untwinned datasets, and 0.375, 0.2 for perfectly twinned datasets.

## 5 Model quality [i](#)

### 5.1 Standard geometry [i](#)

Bond lengths and bond angles in the following residue types are not validated in this section: SPJ, FAD

The Z score for a bond length (or angle) is the number of standard deviations the observed value is removed from the expected value. A bond length (or angle) with  $|Z| > 5$  is considered an outlier worth inspection. RMSZ is the root-mean-square of all Z scores of the bond lengths (or angles).

Mol	Chain	Bond lengths		Bond angles	
		RMSZ	# Z  >5	RMSZ	# Z  >5
1	A	0.40	1/3982 (0.0%)	0.60	0/5385
1	B	0.37	0/3923	0.58	0/5309
All	All	0.38	1/7905 (0.0%)	0.59	0/10694

All (1) bond length outliers are listed below:

Mol	Chain	Res	Type	Atoms	Z	Observed(Å)	Ideal(Å)
1	A	112	GLU	CB-CG	-5.35	1.42	1.52

There are no bond angle outliers.

There are no chirality outliers.

There are no planarity outliers.

### 5.2 Too-close contacts [i](#)

In the following table, the Non-H and H(model) columns list the number of non-hydrogen atoms and hydrogen atoms in the chain respectively. The H(added) column lists the number of hydrogen atoms added and optimized by MolProbity. The Clashes column lists the number of clashes within the asymmetric unit, whereas Symm-Clashes lists symmetry related clashes.

Mol	Chain	Non-H	H(model)	H(added)	Clashes	Symm-Clashes
1	A	3900	0	3757	68	0
1	B	3845	0	3639	104	0
2	A	53	0	31	2	0
2	B	53	0	31	1	0
3	A	16	0	30	1	0
3	B	16	0	30	2	0
4	A	117	0	0	1	0
4	B	104	0	0	0	0

*Continued on next page...*



*Continued from previous page...*

Mol	Chain	Non-H	H(model)	H(added)	Clashes	Symm-Clashes
All	All	8104	0	7518	172	0

The all-atom clashscore is defined as the number of clashes found per 1000 atoms (including hydrogen atoms). The all-atom clashscore for this structure is 11.

All (172) close contacts within the same asymmetric unit are listed below, sorted by their clash magnitude.

Atom-1	Atom-2	Interatomic distance (Å)	Clash overlap (Å)
1:B:282:ILE:HD13	1:B:465:ALA:HB1	1.45	0.97
1:B:353:CYS:SG	1:B:400:PRO:HG2	2.11	0.90
1:B:278:LEU:HA	1:B:470:GLN:HE22	1.34	0.89
1:B:278:LEU:HA	1:B:470:GLN:NE2	1.89	0.87
1:A:377:GLN:H	1:A:377:GLN:NE2	1.74	0.85
1:B:439:ASN:HD21	1:B:442:ARG:HD3	1.42	0.84
1:A:353:CYS:SG	1:A:400:PRO:HG2	2.18	0.83
1:B:377:GLN:NE2	1:B:377:GLN:H	1.75	0.83
1:B:420:PRO:O	1:B:421:ILE:HD13	1.81	0.80
1:A:377:GLN:HE21	1:A:377:GLN:H	1.25	0.80
1:B:335:GLU:O	1:B:339:MET:HB2	1.83	0.78
1:B:380:LEU:HD22	1:B:384:ILE:HG12	1.65	0.78
3:B:803:SPJ:HN1K	3:B:803:SPJ:HN1O	1.36	0.73
1:B:293:ALA:HB3	1:B:378:ALA:HB2	1.71	0.72
1:B:48:LEU:CD2	1:B:63:ALA:HB3	2.19	0.72
1:B:72:ASN:C	1:B:72:ASN:HD22	1.94	0.71
1:B:271:ARG:HH11	1:B:271:ARG:HG3	1.56	0.71
1:A:264:PRO:O	1:A:265:GLU:HB3	1.92	0.69
1:A:414:VAL:HA	1:A:430:PRO:HG2	1.75	0.68
1:B:473:ARG:HG3	1:B:473:ARG:HH11	1.59	0.67
1:B:353:CYS:SG	1:B:401:VAL:HG13	2.35	0.67
1:B:439:ASN:ND2	1:B:442:ARG:HD3	2.08	0.67
1:B:212:PHE:HB2	1:B:213:PRO:HD2	1.76	0.66
1:A:5:SER:N	1:A:6:PRO:HD2	2.11	0.66
1:A:229:GLU:O	1:A:231:SER:N	2.28	0.66
1:A:488:CYS:SG	3:A:802:SPJ:H1A	2.36	0.66
1:B:377:GLN:HE21	1:B:377:GLN:H	1.42	0.65
1:B:278:LEU:CA	1:B:470:GLN:HE22	2.08	0.64
1:B:470:GLN:HB3	1:B:474:ILE:HB	1.80	0.64
1:B:479:GLU:OE1	1:B:487:GLY:HA2	1.97	0.64
1:A:240:ASP:OD1	1:A:242:THR:HG23	1.99	0.63
1:B:252:THR:HG22	1:B:477:ALA:HB3	1.82	0.61
1:B:359:PHE:HD2	1:B:375:LEU:HD22	1.65	0.61

*Continued on next page...*

*Continued from previous page...*

Atom-1	Atom-2	Interatomic distance (Å)	Clash overlap (Å)
1:B:282:ILE:CD1	1:B:465:ALA:HB1	2.27	0.59
1:B:177:LEU:HD11	1:B:292:GLY:HA2	1.85	0.59
1:B:458:ASP:HB3	1:B:461:ASP:OD2	2.03	0.59
1:A:85:ASP:CG	1:A:87:ARG:HG3	2.23	0.59
1:B:265:GLU:C	1:B:267:ASN:H	2.06	0.59
1:A:470:GLN:HB3	1:A:474:ILE:HB	1.86	0.58
1:B:336:LEU:O	1:B:336:LEU:HD23	2.02	0.58
1:B:157:THR:OG1	1:B:160:GLN:HG3	2.04	0.58
1:B:332:ASN:HD22	1:B:334:ASP:H	1.50	0.58
1:B:14:ILE:HD12	1:B:226:ILE:HD11	1.86	0.57
1:A:377:GLN:N	1:A:377:GLN:NE2	2.51	0.57
1:B:259:ASN:O	1:B:262:VAL:HG22	2.05	0.57
1:A:266:LYS:HA	1:A:271:ARG:HD3	1.86	0.57
1:B:176:GLY:O	1:B:177:LEU:HD12	2.05	0.57
1:B:271:ARG:HG3	1:B:271:ARG:NH1	2.20	0.57
1:A:389:GLU:HB2	4:A:838:HOH:O	2.05	0.56
1:A:63:ALA:HA	2:A:801:FAD:N5	2.20	0.56
1:B:63:ALA:HA	2:B:802:FAD:N5	2.20	0.56
1:A:164:LEU:N	1:A:165:PRO:HD2	2.20	0.56
1:A:153:ARG:NH2	1:A:328:ARG:O	2.38	0.56
1:A:463:VAL:HG21	1:A:483:MET:CE	2.35	0.56
1:B:362:ASN:HD21	1:B:364:SER:HB3	1.71	0.56
1:A:233:ASN:CB	1:A:245:ASN:HD21	2.19	0.56
1:A:264:PRO:O	1:A:265:GLU:CB	2.54	0.55
1:A:385:GLU:O	1:A:388:ARG:HG2	2.06	0.55
1:A:252:THR:HG22	1:A:477:ALA:HB3	1.87	0.55
1:B:232:LYS:CA	1:B:473:ARG:HH12	2.19	0.55
1:B:14:ILE:CD1	1:B:226:ILE:HD11	2.36	0.55
1:A:463:VAL:HG21	1:A:483:MET:HE2	1.88	0.55
1:A:133:HIS:HB3	1:A:136:VAL:CG2	2.37	0.55
1:A:150:LEU:O	1:A:153:ARG:HD2	2.07	0.54
1:B:254:PRO:HG2	1:B:257:VAL:HG23	1.88	0.54
1:A:289:ILE:HD13	1:A:459:PRO:HB3	1.89	0.54
1:B:122:MET:O	1:B:125:PHE:HB3	2.07	0.54
1:B:247:ASP:O	1:B:473:ARG:HD2	2.06	0.54
1:B:506:LEU:O	1:B:510:GLU:HG3	2.08	0.54
1:B:311:SER:O	1:B:312:LYS:HE3	2.08	0.54
1:B:473:ARG:NH1	1:B:473:ARG:HG3	2.23	0.53
1:A:138:ASP:OD2	1:A:183:SER:HB2	2.09	0.53
1:B:362:ASN:ND2	1:B:364:SER:H	2.06	0.53
1:B:118:VAL:HG23	1:B:164:LEU:HD13	1.91	0.53

*Continued on next page...*

*Continued from previous page...*

Atom-1	Atom-2	Interatomic distance (Å)	Clash overlap (Å)
1:B:271:ARG:HD3	1:B:271:ARG:C	2.29	0.53
1:A:239:GLU:HG3	1:A:240:ASP:N	2.23	0.53
1:A:377:GLN:HE21	1:A:377:GLN:N	2.01	0.53
3:B:803:SPJ:N1O	3:B:803:SPJ:N1K	2.58	0.52
1:A:158:ASN:HD22	1:A:328:ARG:HH21	1.56	0.52
1:A:177:LEU:HD11	1:A:292:GLY:HA2	1.93	0.51
1:B:359:PHE:CD2	1:B:375:LEU:HD22	2.45	0.51
1:B:48:LEU:HD23	1:B:63:ALA:HB3	1.91	0.51
1:B:251:ILE:HD12	1:B:251:ILE:N	2.26	0.51
1:B:254:PRO:HG2	1:B:257:VAL:CG2	2.40	0.51
1:B:213:PRO:HG2	1:B:216:TRP:CG	2.46	0.51
1:B:57:ARG:HD3	1:B:369:VAL:CG1	2.41	0.51
1:A:14:ILE:N	1:A:14:ILE:HD12	2.26	0.50
1:B:412:GLU:CD	1:B:429:LYS:HD2	2.32	0.49
1:B:377:GLN:NE2	1:B:377:GLN:N	2.53	0.49
1:B:213:PRO:HG2	1:B:216:TRP:CD2	2.47	0.49
1:A:54:TYR:O	1:A:57:ARG:HG3	2.13	0.49
1:A:48:LEU:CD2	1:A:63:ALA:HB3	2.43	0.49
1:B:227:THR:HG23	1:B:275:GLN:HB3	1.95	0.49
1:B:72:ASN:ND2	1:B:72:ASN:C	2.64	0.49
1:B:153:ARG:HG3	1:B:154:GLN:N	2.28	0.48
1:B:13:ILE:HD12	1:B:24:ALA:HB2	1.94	0.48
1:B:213:PRO:HG2	1:B:216:TRP:CD1	2.48	0.48
1:B:237:ASN:ND2	1:B:243:VAL:HG22	2.29	0.48
1:B:72:ASN:HD21	1:B:74:LEU:HB3	1.79	0.48
1:A:68:ASP:HB3	1:A:192:GLN:HB2	1.95	0.48
1:B:150:LEU:CD1	1:B:153:ARG:HH21	2.26	0.48
1:A:311:SER:HA	1:A:362:ASN:HB3	1.96	0.47
1:B:143:GLN:O	1:B:147:LYS:HG3	2.14	0.47
1:A:157:THR:OG1	1:A:160:GLN:HG3	2.14	0.47
1:B:279:LYS:HE2	1:B:470:GLN:HA	1.96	0.47
1:B:133:HIS:ND1	1:B:136:VAL:HG13	2.30	0.47
1:B:463:VAL:HG21	1:B:483:MET:SD	2.55	0.47
1:B:115:LEU:HB3	1:B:167:LEU:HD13	1.95	0.47
1:B:362:ASN:HD21	1:B:364:SER:CB	2.28	0.46
1:B:332:ASN:HD21	1:B:334:ASP:HB2	1.81	0.46
1:B:308:ASN:O	1:B:365:LYS:HD2	2.16	0.46
1:A:176:GLY:O	1:A:177:LEU:HD12	2.16	0.46
1:B:134:LEU:N	1:B:134:LEU:HD22	2.31	0.46
1:A:255:GLN:HB2	1:A:480:HIS:CD2	2.51	0.46
1:B:349:THR:O	1:B:350:SER:CB	2.63	0.45

*Continued on next page...*

*Continued from previous page...*

Atom-1	Atom-2	Interatomic distance (Å)	Clash overlap (Å)
1:B:265:GLU:C	1:B:267:ASN:N	2.70	0.45
1:A:255:GLN:HB2	1:A:480:HIS:CG	2.51	0.45
1:A:158:ASN:ND2	1:A:328:ARG:HH21	2.15	0.45
1:B:234:VAL:O	1:B:245:ASN:HA	2.17	0.45
1:B:12:ILE:HG13	1:B:246:ALA:HB2	1.99	0.45
1:B:227:THR:HG23	1:B:275:GLN:O	2.17	0.45
1:B:150:LEU:HD12	1:B:153:ARG:HH21	1.81	0.44
1:B:500:ALA:O	1:B:504:SER:HB2	2.16	0.44
1:A:325:GLU:CD	1:A:329:ASN:HD21	2.20	0.44
1:B:437:VAL:HG12	1:B:438:SER:O	2.17	0.44
1:B:213:PRO:HG2	1:B:216:TRP:CE2	2.53	0.44
1:A:138:ASP:OD1	1:A:185:LYS:HG3	2.18	0.44
1:A:188:TYR:O	1:A:189:PHE:HB3	2.17	0.44
1:B:70:LEU:HD23	1:A:152:ARG:CZ	2.48	0.44
1:B:135:GLY:O	1:B:137:SER:N	2.52	0.43
1:A:503:ILE:O	1:A:507:LEU:HG	2.18	0.43
1:A:118:VAL:CG2	1:A:164:LEU:HD22	2.48	0.43
1:A:122:MET:HB3	1:A:122:MET:HE3	1.86	0.43
1:B:133:HIS:ND1	1:B:136:VAL:CG1	2.81	0.43
1:B:243:VAL:HG12	1:B:244:TYR:N	2.34	0.43
1:A:130:PHE:O	1:A:133:HIS:HB2	2.19	0.43
1:A:5:SER:N	1:A:6:PRO:CD	2.80	0.43
1:B:213:PRO:O	1:B:216:TRP:HB2	2.18	0.43
1:A:262:VAL:HG23	1:A:262:VAL:O	2.19	0.43
1:B:199:LEU:HD23	1:B:199:LEU:HA	1.75	0.43
1:B:121:GLU:HG3	1:A:193:GLY:HA2	2.01	0.43
1:B:239:GLU:OE1	1:B:239:GLU:HA	2.19	0.43
1:B:98:ILE:HG23	1:B:106:ARG:NE	2.34	0.43
1:A:325:GLU:HG3	1:A:329:ASN:ND2	2.33	0.43
1:A:312:LYS:HD2	1:A:359:PHE:HZ	1.84	0.42
1:A:335:GLU:O	1:A:339:MET:HG3	2.19	0.42
1:A:353:CYS:SG	1:A:401:VAL:HG13	2.59	0.42
1:B:167:LEU:HD23	1:B:167:LEU:C	2.39	0.42
1:B:362:ASN:C	1:B:362:ASN:ND2	2.69	0.42
1:B:9:LYS:O	1:B:246:ALA:HA	2.19	0.42
1:A:442:ARG:HG2	1:A:442:ARG:HH11	1.83	0.42
1:A:222:GLU:OE1	1:A:445:TYR:OH	2.27	0.42
1:A:359:PHE:O	1:A:374:MET:HA	2.19	0.42
1:A:479:GLU:OE1	1:A:487:GLY:HA2	2.19	0.42
1:B:72:ASN:ND2	1:B:75:PHE:H	2.17	0.42
1:B:240:ASP:OD2	1:B:241:GLY:N	2.50	0.42

*Continued on next page...*

Continued from previous page...

Atom-1	Atom-2	Interatomic distance (Å)	Clash overlap (Å)
1:B:130:PHE:HD2	1:B:135:GLY:HA2	1.85	0.42
1:A:63:ALA:HA	2:A:801:FAD:C4X	2.49	0.42
1:A:133:HIS:CB	1:A:136:VAL:HG21	2.50	0.41
1:A:259:ASN:O	1:A:262:VAL:HG22	2.20	0.41
1:B:423:ASN:HB3	1:B:426:ASN:ND2	2.36	0.41
1:A:322:GLU:O	1:A:326:ILE:HG13	2.21	0.41
1:B:164:LEU:N	1:B:165:PRO:HD2	2.35	0.41
1:B:191:HIS:CE1	1:B:195:ASN:HD21	2.38	0.41
1:A:213:PRO:HB2	1:A:216:TRP:CD1	2.55	0.41
1:A:122:MET:O	1:A:125:PHE:HB3	2.21	0.41
1:A:153:ARG:HH21	1:A:328:ARG:C	2.23	0.41
1:B:99:TYR:O	1:B:106:ARG:HA	2.21	0.41
1:B:336:LEU:C	1:B:336:LEU:HD23	2.42	0.40
1:B:153:ARG:CG	1:B:154:GLN:N	2.84	0.40
1:A:118:VAL:HG23	1:A:164:LEU:HD22	2.03	0.40
1:B:251:ILE:HD12	1:B:251:ILE:H	1.84	0.40

There are no symmetry-related clashes.

## 5.3 Torsion angles [i](#)

### 5.3.1 Protein backbone [i](#)

In the following table, the Percentiles column shows the percent Ramachandran outliers of the chain as a percentile score with respect to all X-ray entries followed by that with respect to entries of similar resolution.

The Analysed column shows the number of residues for which the backbone conformation was analysed, and the total number of residues.

Mol	Chain	Analysed	Favoured	Allowed	Outliers	Percentiles
1	A	491/516 (95%)	462 (94%)	22 (4%)	7 (1%)	11 8
1	B	495/516 (96%)	451 (91%)	32 (6%)	12 (2%)	6 3
All	All	986/1032 (96%)	913 (93%)	54 (6%)	19 (2%)	8 5

All (19) Ramachandran outliers are listed below:

Mol	Chain	Res	Type
1	B	133	HIS
1	B	136	VAL

Continued on next page...

*Continued from previous page...*

Mol	Chain	Res	Type
1	B	200	ASN
1	B	265	GLU
1	B	289	ILE
1	B	290	HIS
1	A	200	ASN
1	A	131	HIS
1	A	265	GLU
1	A	231	SER
1	B	230	PRO
1	B	231	SER
1	B	266	LYS
1	B	291	PHE
1	A	189	PHE
1	A	230	PRO
1	B	241	GLY
1	A	262	VAL
1	B	421	ILE

### 5.3.2 Protein sidechains [i](#)

In the following table, the Percentiles column shows the percent sidechain outliers of the chain as a percentile score with respect to all X-ray entries followed by that with respect to entries of similar resolution.

The Analysed column shows the number of residues for which the sidechain conformation was analysed, and the total number of residues.

Mol	Chain	Analysed	Rotameric	Outliers	Percentiles	
1	A	416/457 (91%)	403 (97%)	13 (3%)	40	51
1	B	403/457 (88%)	391 (97%)	12 (3%)	41	53
All	All	819/914 (90%)	794 (97%)	25 (3%)	40	51

All (25) residues with a non-rotameric sidechain are listed below:

Mol	Chain	Res	Type
1	B	72	ASN
1	B	124	LYS
1	B	133	HIS
1	B	136	VAL
1	B	179	TRP
1	B	201	TYR

*Continued on next page...*

*Continued from previous page...*

<b>Mol</b>	<b>Chain</b>	<b>Res</b>	<b>Type</b>
1	B	271	ARG
1	B	312	LYS
1	B	362	ASN
1	B	377	GLN
1	B	380	LEU
1	B	412	GLU
1	A	122	MET
1	A	179	TRP
1	A	201	TYR
1	A	221	CYS
1	A	239	GLU
1	A	267	ASN
1	A	268	LEU
1	A	291	PHE
1	A	362	ASN
1	A	377	GLN
1	A	388	ARG
1	A	389	GLU
1	A	512	HIS

Some sidechains can be flipped to improve hydrogen bonding and reduce clashes. All (23) such sidechains are listed below:

<b>Mol</b>	<b>Chain</b>	<b>Res</b>	<b>Type</b>
1	B	29	GLN
1	B	72	ASN
1	B	191	HIS
1	B	192	GLN
1	B	283	GLN
1	B	329	ASN
1	B	332	ASN
1	B	362	ASN
1	B	377	GLN
1	B	434	ASN
1	B	439	ASN
1	A	29	GLN
1	A	158	ASN
1	A	191	HIS
1	A	214	GLN
1	A	245	ASN
1	A	259	ASN
1	A	267	ASN
1	A	329	ASN

*Continued on next page...*

Continued from previous page...

Mol	Chain	Res	Type
1	A	362	ASN
1	A	377	GLN
1	A	434	ASN
1	A	439	ASN

### 5.3.3 RNA [i](#)

There are no RNA molecules in this entry.

### 5.4 Non-standard residues in protein, DNA, RNA chains [i](#)

There are no non-standard protein/DNA/RNA residues in this entry.

### 5.5 Carbohydrates [i](#)

There are no carbohydrates in this entry.

### 5.6 Ligand geometry [i](#)

4 ligands are modelled in this entry.

In the following table, the Counts columns list the number of bonds (or angles) for which Mogul statistics could be retrieved, the number of bonds (or angles) that are observed in the model and the number of bonds (or angles) that are defined in the Chemical Component Dictionary. The Link column lists molecule types, if any, to which the group is linked. The Z score for a bond length (or angle) is the number of standard deviations the observed value is removed from the expected value. A bond length (or angle) with  $|Z| > 2$  is considered an outlier worth inspection. RMSZ is the root-mean-square of all Z scores of the bond lengths (or angles).

Mol	Type	Chain	Res	Link	Bond lengths			Bond angles		
					Counts	RMSZ	# Z  > 2	Counts	RMSZ	# Z  > 2
2	FAD	A	801	-	51,58,58	1.68	9 (17%)	60,89,89	2.55	13 (21%)
3	SPJ	B	803	-	15,15,15	0.37	0	12,16,16	0.59	0
2	FAD	B	802	-	51,58,58	1.77	10 (19%)	60,89,89	2.55	12 (20%)
3	SPJ	A	802	-	15,15,15	0.37	0	12,16,16	0.58	0

In the following table, the Chirals column lists the number of chiral outliers, the number of chiral centers analysed, the number of these observed in the model and the number defined in the Chemical Component Dictionary. Similar counts are reported in the Torsion and Rings columns. '-' means no outliers of that kind were identified.



Mol	Type	Chain	Res	Link	Chirals	Torsions	Rings
2	FAD	A	801	-	-	4/30/50/50	0/6/6/6
3	SPJ	B	803	-	-	2/13/13/13	-
2	FAD	B	802	-	-	5/30/50/50	0/6/6/6
3	SPJ	A	802	-	-	1/13/13/13	-

All (19) bond length outliers are listed below:

Mol	Chain	Res	Type	Atoms	Z	Observed(Å)	Ideal(Å)
2	B	802	FAD	C4X-C10	5.61	1.44	1.38
2	A	801	FAD	C4X-C10	4.85	1.43	1.38
2	A	801	FAD	C4X-N5	4.50	1.39	1.33
2	B	802	FAD	C4X-N5	4.33	1.39	1.33
2	B	802	FAD	C9A-N10	4.20	1.44	1.38
2	B	802	FAD	C10-N1	4.10	1.38	1.33
2	A	801	FAD	C4-N3	3.89	1.39	1.33
2	B	802	FAD	C4-N3	3.60	1.39	1.33
2	A	801	FAD	C10-N1	3.25	1.37	1.33
2	A	801	FAD	C9A-N10	3.12	1.42	1.38
2	A	801	FAD	C2A-N3A	3.01	1.37	1.32
2	A	801	FAD	C5X-N5	2.73	1.39	1.35
2	B	802	FAD	C2A-N1A	2.70	1.38	1.33
2	B	802	FAD	C2A-N3A	2.67	1.36	1.32
2	A	801	FAD	C2A-N1A	2.36	1.38	1.33
2	B	802	FAD	C5B-C4B	2.27	1.58	1.51
2	A	801	FAD	C5B-C4B	2.24	1.58	1.51
2	B	802	FAD	C5X-N5	2.14	1.38	1.35
2	B	802	FAD	C1'-N10	2.02	1.50	1.48

All (25) bond angle outliers are listed below:

Mol	Chain	Res	Type	Atoms	Z	Observed(°)	Ideal(°)
2	B	802	FAD	C4-N3-C2	10.88	124.33	115.14
2	A	801	FAD	C4-N3-C2	10.56	124.06	115.14
2	A	801	FAD	O2A-PA-O5B	-7.68	72.07	107.75
2	B	802	FAD	O2A-PA-O5B	-7.42	73.28	107.75
2	A	801	FAD	O5B-PA-O1A	6.68	135.18	109.07
2	B	802	FAD	O5B-PA-O1A	6.65	135.06	109.07
2	A	801	FAD	O2A-PA-O1A	-5.91	83.03	112.24
2	B	802	FAD	O2A-PA-O1A	-5.78	83.66	112.24
2	B	802	FAD	C1'-N10-C9A	4.82	122.08	118.29
2	B	802	FAD	C4X-C4-N3	-4.65	117.07	123.43
2	A	801	FAD	C4X-C4-N3	-4.49	117.30	123.43

*Continued on next page...*

Continued from previous page...

Mol	Chain	Res	Type	Atoms	Z	Observed(°)	Ideal(°)
2	A	801	FAD	O4B-C1B-C2B	-4.26	100.70	106.93
2	A	801	FAD	C1'-N10-C9A	4.15	121.56	118.29
2	B	802	FAD	C4X-N5-C5X	4.14	120.91	116.77
2	A	801	FAD	C4X-N5-C5X	3.89	120.66	116.77
2	B	802	FAD	O4B-C1B-C2B	-3.45	101.89	106.93
2	A	801	FAD	C4-C4X-C10	-3.27	117.78	119.95
2	B	802	FAD	C4-C4X-C10	-2.42	118.35	119.95
2	A	801	FAD	C4-C4X-N5	2.39	121.33	118.60
2	B	802	FAD	O3'-C3'-C4'	-2.39	103.03	108.81
2	B	802	FAD	C5A-C6A-N6A	2.37	123.96	120.35
2	A	801	FAD	N3A-C2A-N1A	-2.36	124.99	128.68
2	A	801	FAD	C5A-C6A-N6A	2.21	123.71	120.35
2	B	802	FAD	N3A-C2A-N1A	-2.20	125.24	128.68
2	A	801	FAD	C5X-C9A-N10	2.14	119.27	117.72

There are no chirality outliers.

All (12) torsion outliers are listed below:

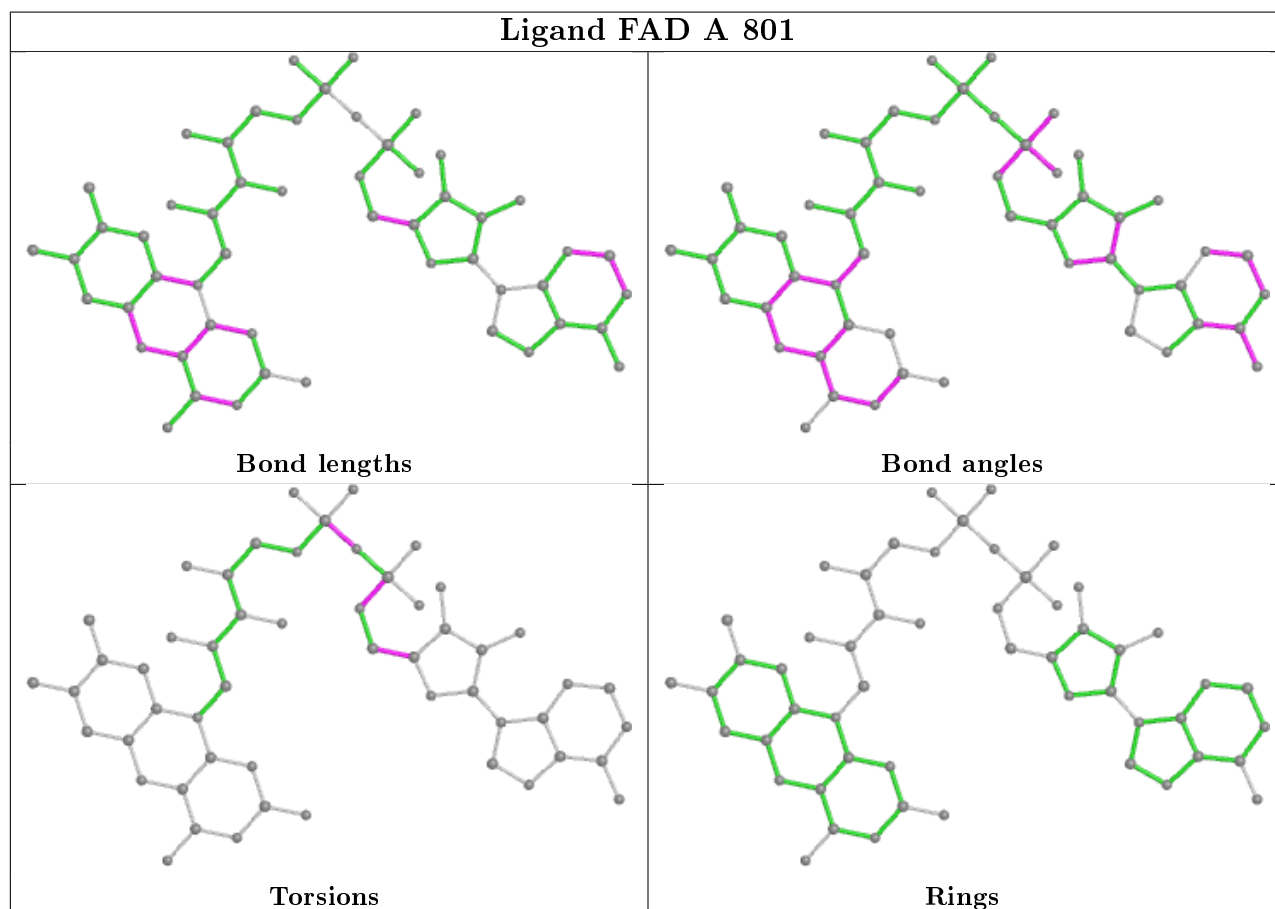
Mol	Chain	Res	Type	Atoms
2	A	801	FAD	C5B-O5B-PA-O1A
2	B	802	FAD	C5B-O5B-PA-O1A
2	B	802	FAD	C3B-C4B-C5B-O5B
2	A	801	FAD	O4B-C4B-C5B-O5B
2	A	801	FAD	C3B-C4B-C5B-O5B
2	B	802	FAD	O4B-C4B-C5B-O5B
2	A	801	FAD	PA-O3P-P-O5'
2	B	802	FAD	PA-O3P-P-O5'
3	A	802	SPJ	C1I-C1J-N1K-C1L
3	B	803	SPJ	C1G-C1H-C1I-C1J
3	B	803	SPJ	C1I-C1J-N1K-C1L
2	B	802	FAD	C4B-C5B-O5B-PA

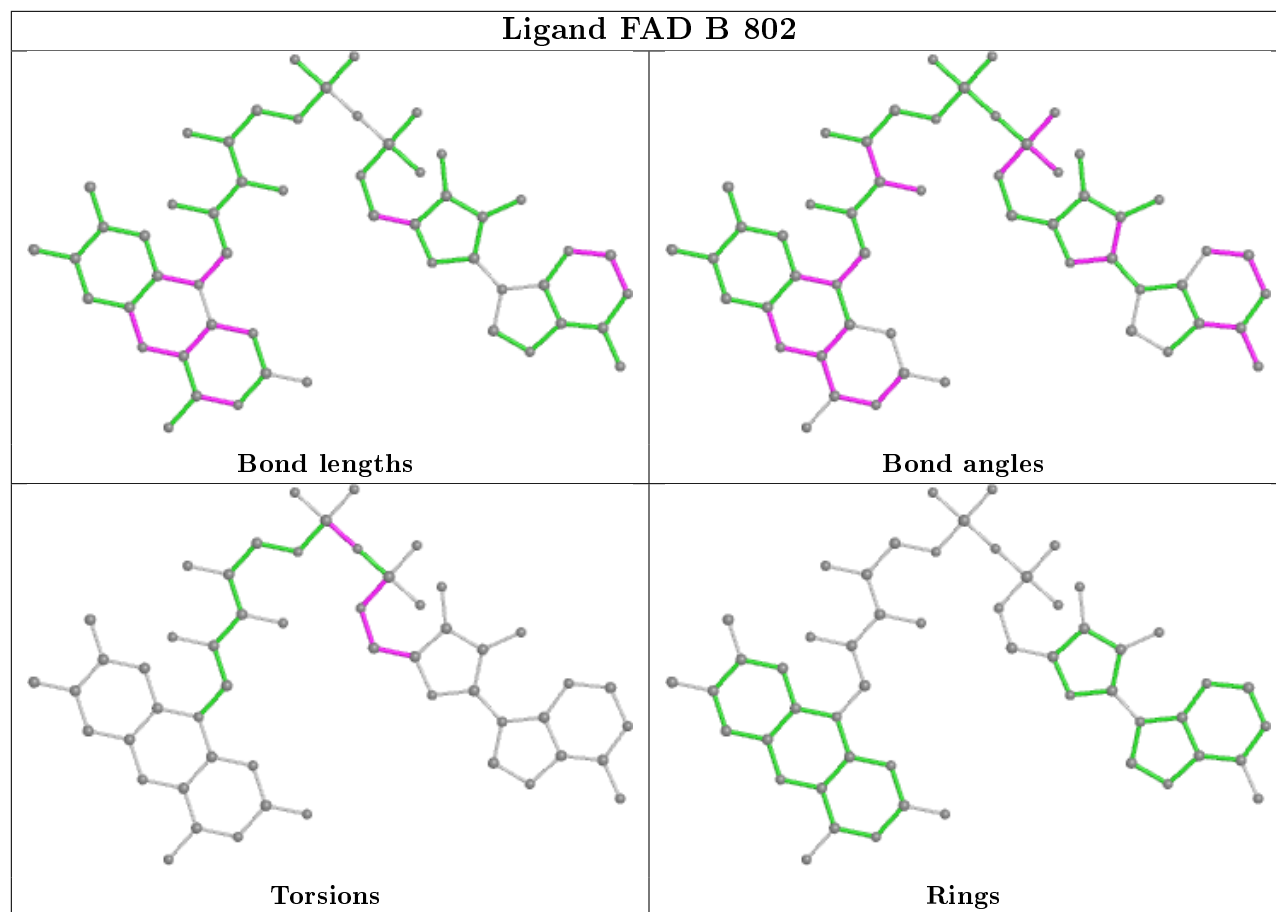
There are no ring outliers.

4 monomers are involved in 6 short contacts:

Mol	Chain	Res	Type	Clashes	Symm-Clashes
2	A	801	FAD	2	0
3	B	803	SPJ	2	0
2	B	802	FAD	1	0
3	A	802	SPJ	1	0

The following is a two-dimensional graphical depiction of Mogul quality analysis of bond lengths, bond angles, torsion angles, and ring geometry for all instances of the Ligand of Interest. In addition, ligands with molecular weight > 250 and outliers as shown on the validation Tables will also be included. For torsion angles, if less than 5% of the Mogul distribution of torsion angles is within 10 degrees of the torsion angle in question, then that torsion angle is considered an outlier. Any bond that is central to one or more torsion angles identified as an outlier by Mogul will be highlighted in the graph. For rings, the root-mean-square deviation (RMSD) between the ring in question and similar rings identified by Mogul is calculated over all ring torsion angles. If the average RMSD is greater than 60 degrees and the minimal RMSD between the ring in question and any Mogul-identified rings is also greater than 60 degrees, then that ring is considered an outlier. The outliers are highlighted in purple. The color gray indicates Mogul did not find sufficient equivalents in the CSD to analyse the geometry.





## 5.7 Other polymers [i](#)

There are no such residues in this entry.

## 5.8 Polymer linkage issues [i](#)

There are no chain breaks in this entry.

## 6 Fit of model and data

### 6.1 Protein, DNA and RNA chains

In the following table, the column labelled ‘#RSRZ> 2’ contains the number (and percentage) of RSRZ outliers, followed by percent RSRZ outliers for the chain as percentile scores relative to all X-ray entries and entries of similar resolution. The OWAB column contains the minimum, median, 95<sup>th</sup> percentile and maximum values of the occupancy-weighted average B-factor per residue. The column labelled ‘Q< 0.9’ lists the number of (and percentage) of residues with an average occupancy less than 0.9.

Mol	Chain	Analysed	<RSRZ>	#RSRZ>2	OWAB(Å <sup>2</sup> )	Q<0.9
1	A	497/516 (96%)	0.13	28 (5%) 24 23	18, 35, 59, 83	0
1	B	499/516 (96%)	0.37	46 (9%) 9 7	23, 39, 68, 87	0
All	All	996/1032 (96%)	0.25	74 (7%) 14 13	18, 37, 64, 87	0

All (74) RSRZ outliers are listed below:

Mol	Chain	Res	Type	RSRZ
1	B	134	LEU	8.7
1	A	342	ARG	6.3
1	B	289	ILE	5.5
1	B	137	SER	4.4
1	A	231	SER	4.4
1	B	133	HIS	4.2
1	B	135	GLY	4.1
1	A	230	PRO	4.0
1	A	5	SER	4.0
1	B	14	ILE	3.8
1	B	288	LYS	3.8
1	A	131	HIS	3.7
1	B	232	LYS	3.5
1	B	230	PRO	3.4
1	A	251	ILE	3.3
1	B	33	GLN	3.3
1	B	136	VAL	3.2
1	B	267	ASN	3.2
1	B	132	GLN	3.2
1	B	339	MET	3.1
1	B	138	ASP	3.1
1	A	419	ARG	3.1
1	B	189	PHE	3.0
1	B	191	HIS	3.0

*Continued on next page...*

*Continued from previous page...*

<b>Mol</b>	<b>Chain</b>	<b>Res</b>	<b>Type</b>	<b>RSRZ</b>
1	A	513	HIS	3.0
1	B	460	VAL	2.9
1	A	14	ILE	2.9
1	A	250	ILE	2.9
1	B	226	ILE	2.8
1	A	232	LYS	2.8
1	B	237	ASN	2.8
1	A	343	GLU	2.8
1	B	252	THR	2.8
1	B	251	ILE	2.8
1	A	133	HIS	2.7
1	B	420	PRO	2.7
1	B	421	ILE	2.6
1	B	425	ALA	2.6
1	A	427	ALA	2.6
1	A	229	GLU	2.6
1	B	455	PRO	2.6
1	A	136	VAL	2.6
1	B	457	ASP	2.5
1	B	464	VAL	2.5
1	A	174	TRP	2.5
1	B	228	ARG	2.4
1	B	173	LEU	2.4
1	B	240	ASP	2.4
1	A	511	HIS	2.4
1	B	264	PRO	2.4
1	A	288	LYS	2.4
1	A	19	ALA	2.4
1	A	477	ALA	2.3
1	A	191	HIS	2.3
1	B	231	SER	2.3
1	B	249	VAL	2.3
1	A	13	ILE	2.3
1	A	252	THR	2.3
1	A	512	HIS	2.2
1	B	458	ASP	2.2
1	B	361	VAL	2.2
1	B	250	ILE	2.2
1	B	131	HIS	2.2
1	B	248	TYR	2.2
1	A	23	ALA	2.2
1	B	456	GLY	2.2

*Continued on next page...*

*Continued from previous page...*

Mol	Chain	Res	Type	RSRZ
1	B	342	ARG	2.1
1	B	38	LEU	2.1
1	B	340	LEU	2.1
1	B	424	ILE	2.1
1	A	249	VAL	2.1
1	B	454	PHE	2.0
1	A	350	SER	2.0
1	B	374	MET	2.0

## 6.2 Non-standard residues in protein, DNA, RNA chains [i](#)

There are no non-standard protein/DNA/RNA residues in this entry.

## 6.3 Carbohydrates [i](#)

There are no carbohydrates in this entry.

## 6.4 Ligands [i](#)

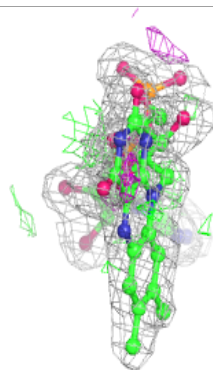
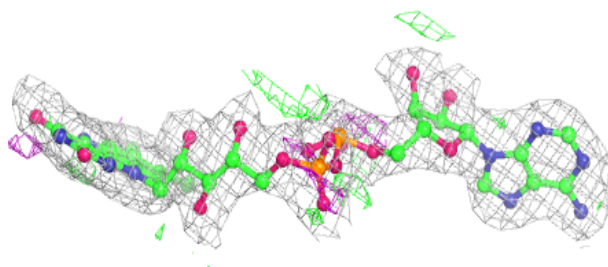
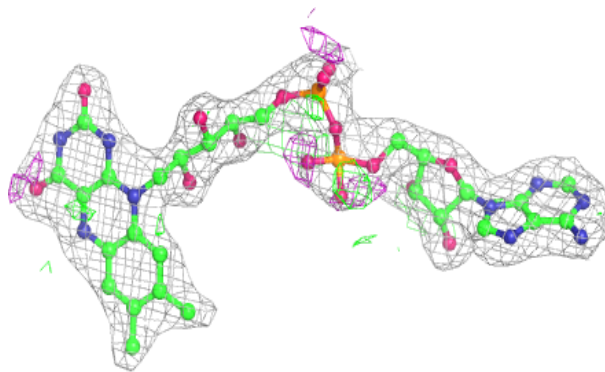
In the following table, the Atoms column lists the number of modelled atoms in the group and the number defined in the chemical component dictionary. The B-factors column lists the minimum, median, 95<sup>th</sup> percentile and maximum values of B factors of atoms in the group. The column labelled 'Q< 0.9' lists the number of atoms with occupancy less than 0.9.

Mol	Type	Chain	Res	Atoms	RSCC	RSR	B-factors(Å <sup>2</sup> )	Q<0.9
3	SPJ	B	803	16/16	0.70	0.29	60,64,67,68	0
3	SPJ	A	802	16/16	0.73	0.31	55,59,61,62	0
2	FAD	B	802	53/53	0.94	0.17	26,32,40,47	0
2	FAD	A	801	53/53	0.96	0.15	18,24,29,40	0

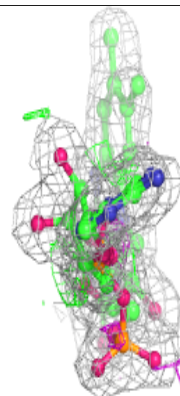
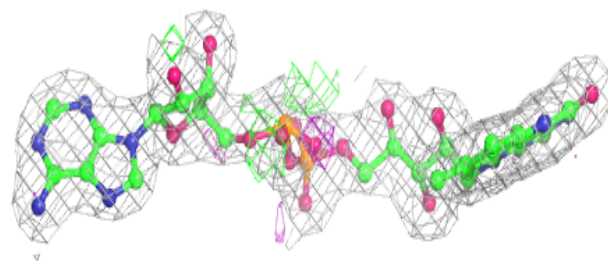
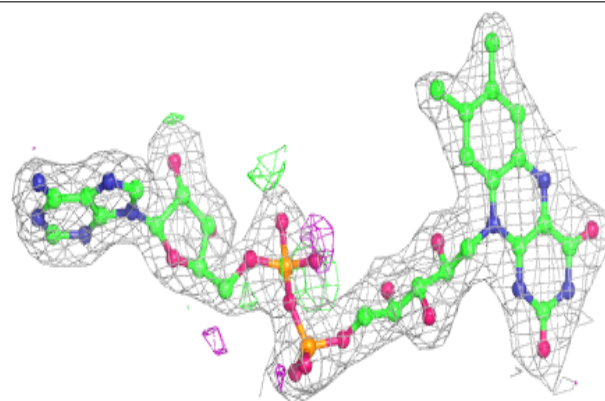
The following is a graphical depiction of the model fit to experimental electron density of all instances of the Ligand of Interest. In addition, ligands with molecular weight > 250 and outliers as shown on the geometry validation Tables will also be included. Each fit is shown from different orientation to approximate a three-dimensional view.

**Electron density around FAD B 802:**

$2mF_o-DF_c$  (at 0.7 rmsd) in gray  
 $mF_o-DF_c$  (at 3 rmsd) in purple (negative)  
and green (positive)

**Electron density around FAD A 801:**

$2mF_o-DF_c$  (at 0.7 rmsd) in gray  
 $mF_o-DF_c$  (at 3 rmsd) in purple (negative)  
and green (positive)





## 6.5 Other polymers

There are no such residues in this entry.