



Full wwPDB EM Validation Report ⓘ

Dec 18, 2022 – 02:15 pm GMT

PDB ID : 7BOI
EMDB ID : EMD-12244
Title : Bacterial 30S ribosomal subunit assembly complex state F (multibody refinement for body domain of 30S ribosome)
Authors : Schedlbauer, A.; Iturrioz, I.; Ochoa-Lizarralde, B.; Diercks, T.; Kaminishi, T.; Capuni, R.; Astigarraga, E.; Gil-Carton, D.; Fucini, P.; Connell, S.
Deposited on : 2021-01-25
Resolution : 2.98 Å(reported)

This is a Full wwPDB EM Validation Report for a publicly released PDB entry.

We welcome your comments at validation@mail.wwpdb.org

A user guide is available at

<https://www.wwpdb.org/validation/2017/EMValidationReportHelp>

with specific help available everywhere you see the ⓘ symbol.

The types of validation reports are described at

<http://www.wwpdb.org/validation/2017/FAQs#types>.

The following versions of software and data (see [references ⓘ](#)) were used in the production of this report:

EMDB validation analysis : 0.0.1.dev43
Mogul : 1.8.4, CSD as541be (2020)
MolProbity : 4.02b-467
buster-report : 1.1.7 (2018)
Percentile statistics : 20191225.v01 (using entries in the PDB archive December 25th 2019)
MapQ : 1.9.9
Ideal geometry (proteins) : Engh & Huber (2001)
Ideal geometry (DNA, RNA) : Parkinson et al. (1996)
Validation Pipeline (wwPDB-VP) : 2.31.3

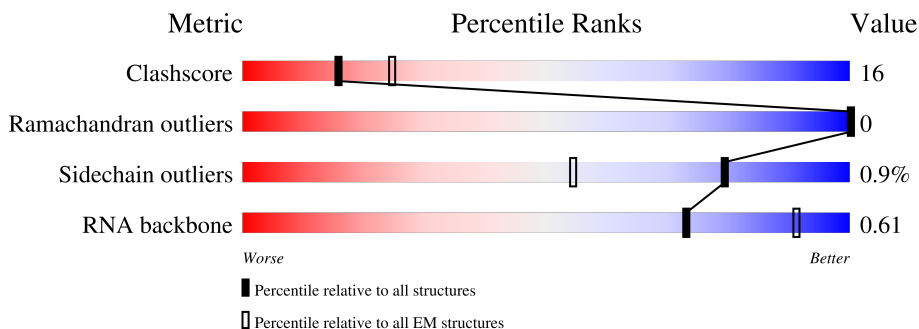
1 Overall quality at a glance

The following experimental techniques were used to determine the structure:

ELECTRON MICROSCOPY

The reported resolution of this entry is 2.98 Å.

Percentile scores (ranging between 0-100) for global validation metrics of the entry are shown in the following graphic. The table shows the number of entries on which the scores are based.




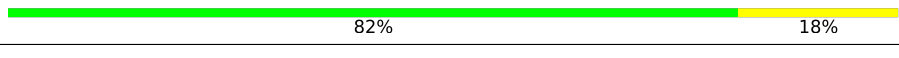
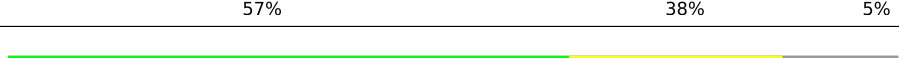
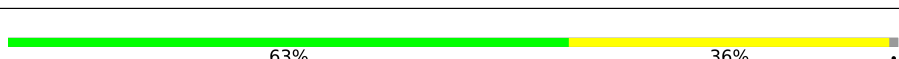
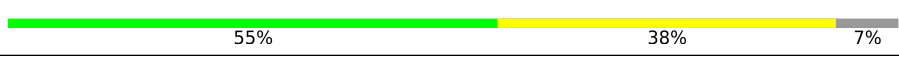


Metric	Whole archive (#Entries)	EM structures (#Entries)
Clashscore	158937	4297
Ramachandran outliers	154571	4023
Sidechain outliers	154315	3826
RNA backbone	4643	859

The table below summarises the geometric issues observed across the polymeric chains and their fit to the map. The red, orange, yellow and green segments of the bar indicate the fraction of residues that contain outliers for ≥ 3 , 2, 1 and 0 types of geometric quality criteria respectively. A grey segment represents the fraction of residues that are not modelled. The numeric value for each fraction is indicated below the corresponding segment, with a dot representing fractions $\leq 5\%$. The upper red bar (where present) indicates the fraction of residues that have poor fit to the EM map (all-atom inclusion $< 40\%$). The numeric value is given above the bar.

Mol	Chain	Length	Quality of chain
1	A	1542	
2	D	206	
3	E	167	
4	F	135	
5	H	130	
6	K	129	
7	L	124	

Continued on next page...

Continued from previous page...

Mol	Chain	Length	Quality of chain
8	O	89	
9	P	82	
10	Q	84	
11	R	75	
12	T	87	
13	U	71	
14	W	350	

2 Entry composition [i](#)

There are 17 unique types of molecules in this entry. The entry contains 35970 atoms, of which 0 are hydrogens and 0 are deuteriums.

In the tables below, the AltConf column contains the number of residues with at least one atom in alternate conformation and the Trace column contains the number of residues modelled with at most 2 atoms.

- Molecule 1 is a RNA chain called 16S rRNA.

Mol	Chain	Residues	Atoms					AltConf	Trace
			Total	C	N	O	P		
1	A	1078	23172	10337	4269	7488	1078	0	0

- Molecule 2 is a protein called 30S ribosomal protein S4.

Mol	Chain	Residues	Atoms					AltConf	Trace
			Total	C	N	O	S		
2	D	205	1643	1026	315	298	4	0	0

- Molecule 3 is a protein called 30S ribosomal protein S5.

Mol	Chain	Residues	Atoms					AltConf	Trace
			Total	C	N	O	S		
3	E	156	1152	717	217	212	6	0	0

- Molecule 4 is a protein called 30S ribosomal protein S6.

Mol	Chain	Residues	Atoms					AltConf	Trace
			Total	C	N	O	S		
4	F	106	862	545	156	154	7	0	0

- Molecule 5 is a protein called 30S ribosomal protein S8.

Mol	Chain	Residues	Atoms					AltConf	Trace
			Total	C	N	O	S		
5	H	129	979	616	173	184	6	0	0

- Molecule 6 is a protein called 30S ribosomal protein S11.

Mol	Chain	Residues	Atoms					AltConf	Trace
			Total	C	N	O	S		
6	K	117	877	540	174	160	3	0	0

- Molecule 7 is a protein called 30S ribosomal protein S12.

Mol	Chain	Residues	Atoms					AltConf	Trace
			Total	C	N	O	S		
7	L	123	957	591	196	165	5	0	0

- Molecule 8 is a protein called 30S ribosomal protein S15.

Mol	Chain	Residues	Atoms					AltConf	Trace
			Total	C	N	O	S		
8	O	88	714	439	144	130	1	0	0

- Molecule 9 is a protein called 30S ribosomal protein S16.

Mol	Chain	Residues	Atoms					AltConf	Trace
			Total	C	N	O	S		
9	P	82	649	406	128	114	1	0	0

- Molecule 10 is a protein called 30S ribosomal protein S17.

Mol	Chain	Residues	Atoms					AltConf	Trace
			Total	C	N	O	S		
10	Q	80	648	411	121	113	3	0	0

- Molecule 11 is a protein called 30S ribosomal protein S18.

Mol	Chain	Residues	Atoms					AltConf	Trace
			Total	C	N	O	S		
11	R	65	535	339	100	95	1	0	0

- Molecule 12 is a protein called 30S ribosomal protein S20.

Mol	Chain	Residues	Atoms					AltConf	Trace
			Total	C	N	O	S		
12	T	86	670	414	138	115	3	0	0

- Molecule 13 is a protein called 30S ribosomal protein S21.

Mol	Chain	Residues	Atoms					AltConf	Trace
			Total	C	N	O	S		
13	U	66	551	341	118	91	1	0	0

- Molecule 14 is a protein called Small ribosomal subunit biogenesis GTPase RsgA.

Mol	Chain	Residues	Atoms					AltConf	Trace
			Total	C	N	O	S		
14	W	314	2456	1542	433	471	10	0	0

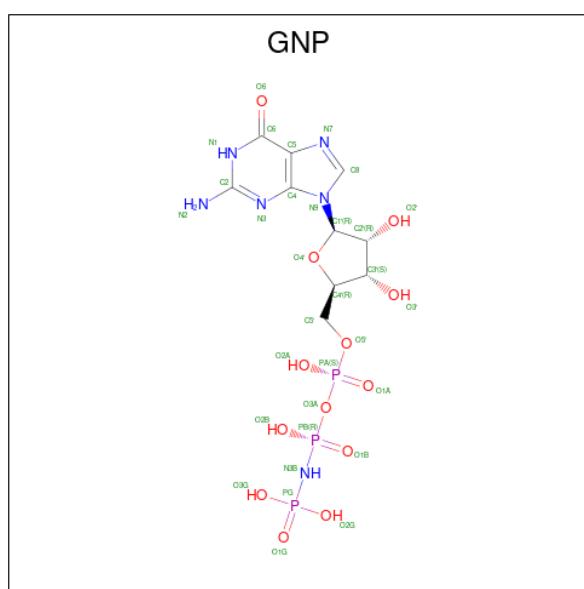
- Molecule 15 is MAGNESIUM ION (three-letter code: MG) (formula: Mg).

Mol	Chain	Residues	Atoms		AltConf
			Total	Mg	
15	A	70	70	70	0
15	W	2	2	2	0

- Molecule 16 is ZINC ION (three-letter code: ZN) (formula: Zn).

Mol	Chain	Residues	Atoms		AltConf
			Total	Zn	
16	W	1	1	1	0

- Molecule 17 is PHOSPHOAMINOPHOSPHONIC ACID-GUANYLATE ESTER (three-letter code: GNP) (formula: C₁₀H₁₇N₆O₁₃P₃).

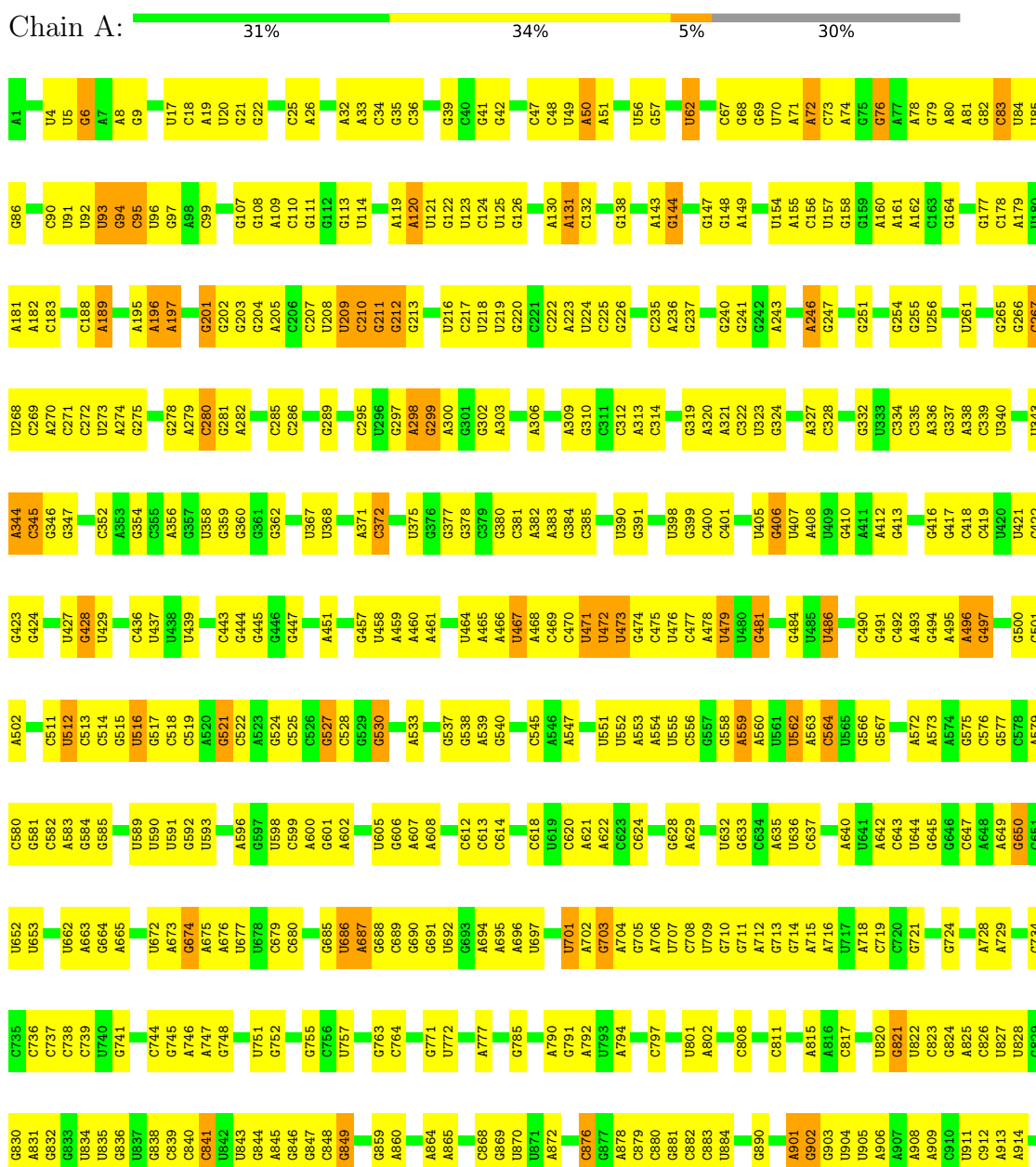


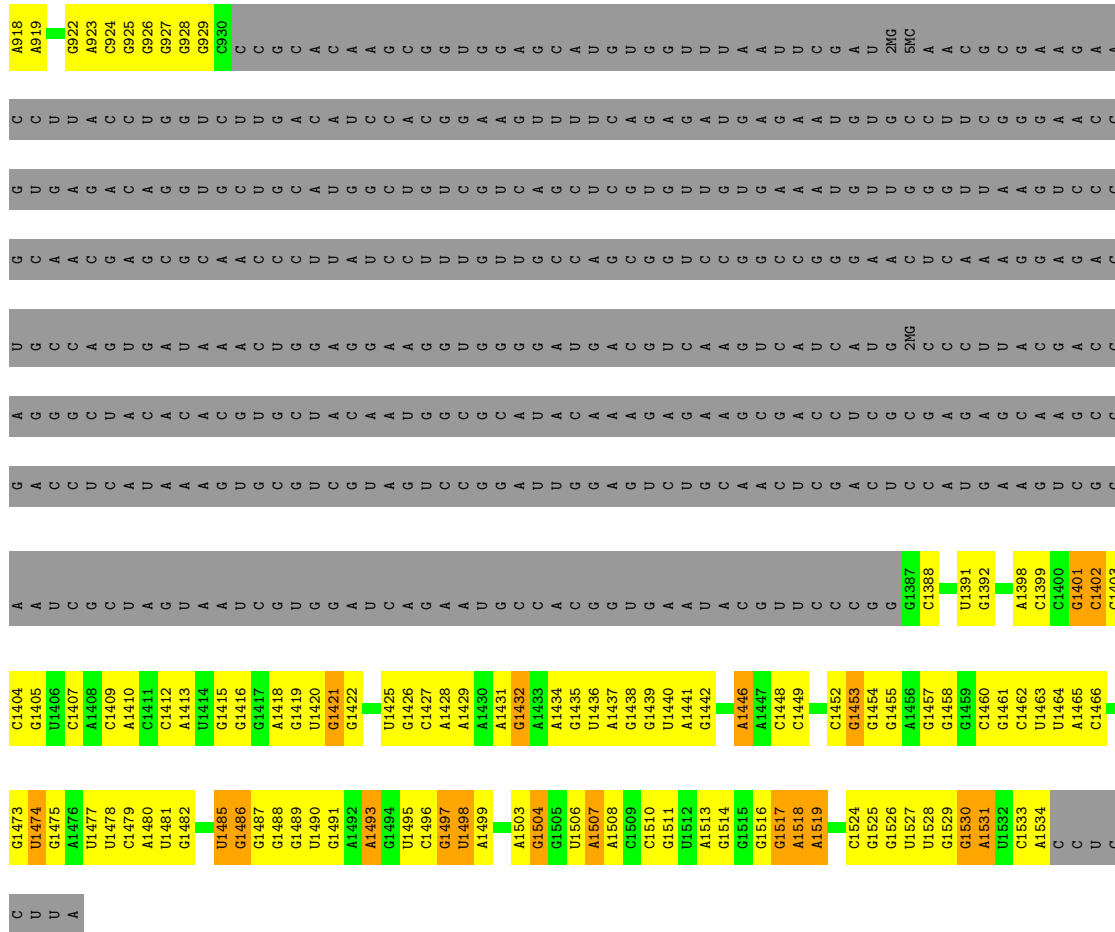
Mol	Chain	Residues	Atoms					AltConf
			Total	C	N	O	P	
17	W	1	32	10	6	13	3	0

3 Residue-property plots [i](#)

These plots are drawn for all protein, RNA, DNA and oligosaccharide chains in the entry. The first graphic for a chain summarises the proportions of the various outlier classes displayed in the second graphic. The second graphic shows the sequence view annotated by issues in geometry and atom inclusion in map density. Residues are color-coded according to the number of geometric quality criteria for which they contain at least one outlier: green = 0, yellow = 1, orange = 2 and red = 3 or more. A red diamond above a residue indicates a poor fit to the EM map for this residue (all-atom inclusion < 40%). Stretches of 2 or more consecutive residues without any outlier are shown as a green connector. Residues present in the sample, but not in the model, are shown in grey.

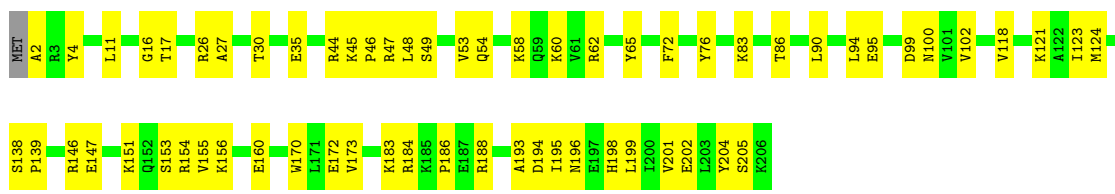
- Molecule 1: 16S rRNA





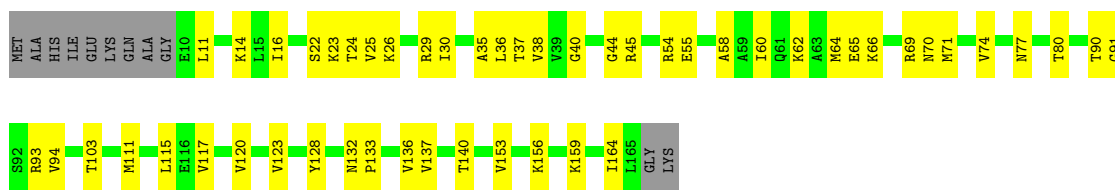
● Molecule 2: 30S ribosomal protein S4

Chain D:

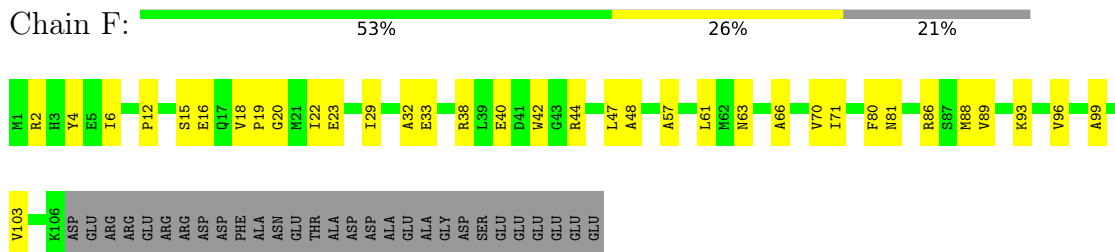


● Molecule 3: 30S ribosomal protein S5

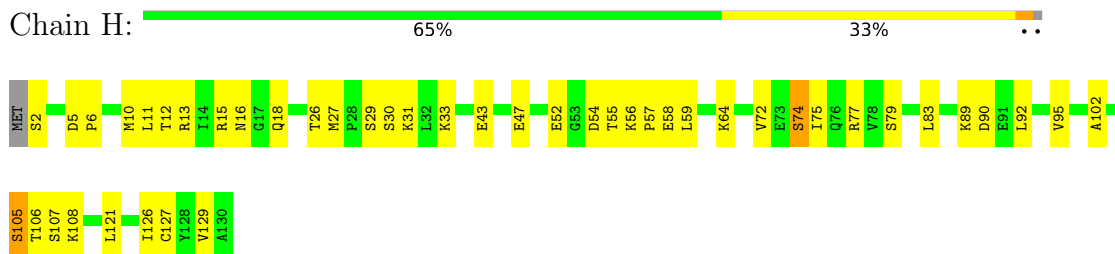
Chain E:



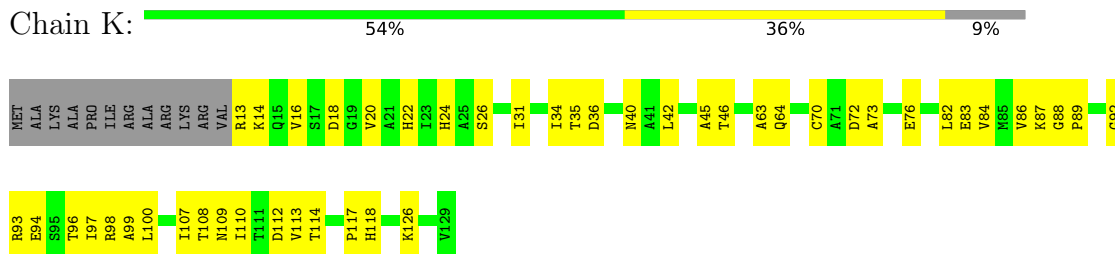
● Molecule 4: 30S ribosomal protein S6



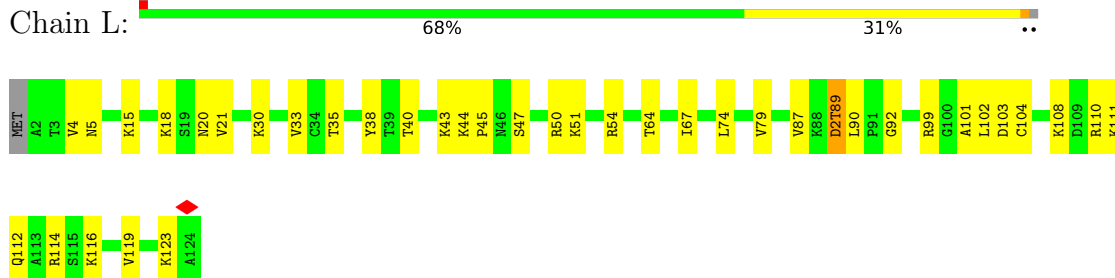
• Molecule 5: 30S ribosomal protein S8



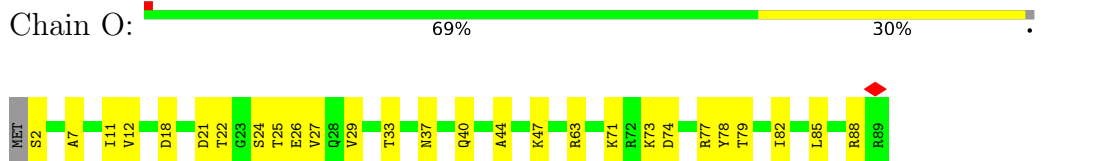
• Molecule 6: 30S ribosomal protein S11



• Molecule 7: 30S ribosomal protein S12



• Molecule 8: 30S ribosomal protein S15

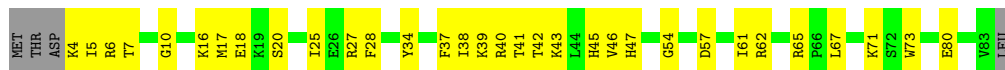


• Molecule 9: 30S ribosomal protein S16

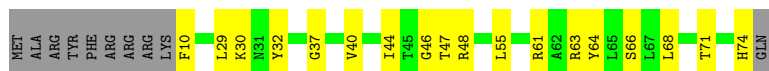




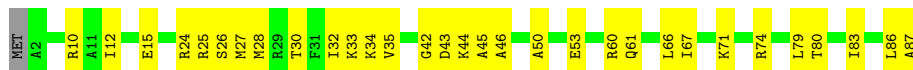
• Molecule 10: 30S ribosomal protein S17



• Molecule 11: 30S ribosomal protein S18



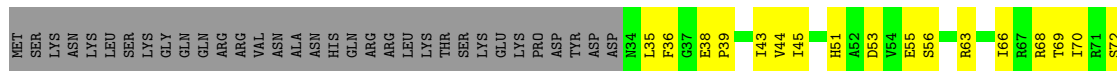
• Molecule 12: 30S ribosomal protein S20



• Molecule 13: 30S ribosomal protein S21



• Molecule 14: Small ribosomal subunit biogenesis GTPase RsgA



4 Experimental information

Property	Value	Source
EM reconstruction method	SINGLE PARTICLE	Depositor
Imposed symmetry	POINT, C1	Depositor
Number of particles used	21537	Depositor
Resolution determination method	FSC 0.143 CUT-OFF	Depositor
CTF correction method	PHASE FLIPPING AND AMPLITUDE CORRECTION	Depositor
Microscope	FEI TITAN KRIOS	Depositor
Voltage (kV)	300	Depositor
Electron dose ($e^-/\text{\AA}^2$)	46.1	Depositor
Minimum defocus (nm)	Not provided	
Maximum defocus (nm)	Not provided	
Magnification	Not provided	
Image detector	GATAN K2 SUMMIT (4k x 4k)	Depositor
Maximum map value	0.123	Depositor
Minimum map value	-0.037	Depositor
Average map value	-0.000	Depositor
Map value standard deviation	0.005	Depositor
Recommended contour level	0.016	Depositor
Map size (Å)	416.64, 416.64, 416.64	wwPDB
Map dimensions	384, 384, 384	wwPDB
Map angles (°)	90.0, 90.0, 90.0	wwPDB
Pixel spacing (Å)	1.085, 1.085, 1.085	Depositor

5 Model quality [i](#)

5.1 Standard geometry [i](#)

Bond lengths and bond angles in the following residue types are not validated in this section: MA6, 4OC, PSU, 5MC, GNP, 2MG, UR3, G7M, MG, ZN, D2T

The Z score for a bond length (or angle) is the number of standard deviations the observed value is removed from the expected value. A bond length (or angle) with $|Z| > 5$ is considered an outlier worth inspection. RMSZ is the root-mean-square of all Z scores of the bond lengths (or angles).

Mol	Chain	Bond lengths		Bond angles	
		RMSZ	# Z >5	RMSZ	# Z >5
1	A	0.62	0/25749	0.77	0/40169
2	D	0.40	0/1665	0.47	0/2227
3	E	0.40	0/1165	0.51	0/1568
4	F	0.49	0/881	0.58	0/1189
5	H	0.47	0/989	0.54	0/1326
6	K	0.47	0/893	0.56	0/1205
7	L	0.47	0/960	0.54	0/1286
8	O	0.36	0/722	0.45	0/964
9	P	0.48	0/659	0.54	0/884
10	Q	0.48	0/657	0.53	0/881
11	R	0.44	0/544	0.51	0/731
12	T	0.34	0/676	0.45	0/895
13	U	0.34	0/558	0.46	0/739
14	W	0.46	0/2501	0.53	0/3387
All	All	0.56	0/38619	0.70	0/57451

There are no bond length outliers.

There are no bond angle outliers.

There are no chirality outliers.

There are no planarity outliers.

5.2 Too-close contacts [i](#)

In the following table, the Non-H and H(model) columns list the number of non-hydrogen atoms and hydrogen atoms in the chain respectively. The H(added) column lists the number of hydrogen atoms added and optimized by MolProbity. The Clashes column lists the number of clashes within the asymmetric unit, whereas Symm-Clashes lists symmetry-related clashes.

Mol	Chain	Non-H	H(model)	H(added)	Clashes	Symm-Clashes
1	A	23172	0	11666	510	0
2	D	1643	0	1707	64	0
3	E	1152	0	1196	49	0
4	F	862	0	864	42	0
5	H	979	0	1031	57	0
6	K	877	0	887	42	0
7	L	957	0	1017	42	0
8	O	714	0	734	19	0
9	P	649	0	666	16	0
10	Q	648	0	691	32	0
11	R	535	0	552	16	0
12	T	670	0	719	28	0
13	U	551	0	589	31	0
14	W	2456	0	2423	101	0
15	A	70	0	0	0	0
15	W	2	0	0	0	0
16	W	1	0	0	0	0
17	W	32	0	13	3	0
All	All	35970	0	24755	959	0

The all-atom clashscore is defined as the number of clashes found per 1000 atoms (including hydrogen atoms). The all-atom clashscore for this structure is 16.

All (959) close contacts within the same asymmetric unit are listed below, sorted by their clash magnitude.

Atom-1	Atom-2	Interatomic distance (Å)	Clash overlap (Å)
4:F:63:ASN:ND2	4:F:96:VAL:HG23	1.77	0.99
5:H:47:GLU:HG3	5:H:64:LYS:CG	1.93	0.98
6:K:112:ASP:OD1	6:K:114:THR:HG23	1.65	0.97
5:H:77:ARG:HA	5:H:127:CYS:SG	2.05	0.96
5:H:47:GLU:CG	5:H:64:LYS:HG2	1.97	0.95
14:W:126:ILE:HG22	14:W:211:ILE:CG2	1.97	0.94
2:D:102:VAL:HG21	2:D:123:ILE:HD13	1.47	0.94
4:F:42:TRP:CE2	4:F:61:LEU:HD23	2.02	0.94
4:F:63:ASN:ND2	4:F:96:VAL:CG2	2.33	0.91
4:F:63:ASN:HD21	4:F:96:VAL:CG2	1.84	0.90
4:F:42:TRP:CZ2	4:F:61:LEU:HD23	2.05	0.90
9:P:50:THR:HG21	9:P:74:LEU:HD22	1.52	0.89
14:W:307:ASP:O	14:W:313:ARG:NH1	2.06	0.89
2:D:48:LEU:HD11	2:D:53:VAL:HB	1.54	0.88
5:H:47:GLU:HG3	5:H:64:LYS:HG2	1.53	0.88
5:H:126:ILE:O	5:H:127:CYS:SG	2.32	0.88

Continued on next page...

Continued from previous page...

Atom-1	Atom-2	Interatomic distance (Å)	Clash overlap (Å)
4:F:63:ASN:HD21	4:F:96:VAL:HG22	1.37	0.87
1:A:207:C:O2	1:A:212:G:N2	2.07	0.86
1:A:144:G:N2	1:A:178:C:O2	2.08	0.85
4:F:40:GLU:HB2	4:F:61:LEU:HD11	1.56	0.84
4:F:63:ASN:HD22	4:F:96:VAL:HG23	1.43	0.84
1:A:841:C:O2	1:A:845:A:N6	2.11	0.84
1:A:1449:C:N3	1:A:1454:G:N1	2.26	0.83
3:E:16:ILE:HD11	3:E:36:LEU:CD2	2.09	0.83
3:E:90:THR:HG22	3:E:91:GLY:H	1.42	0.82
1:A:771:G:N2	1:A:808:C:O2	2.12	0.82
1:A:664:G:H22	1:A:741:G:H1	1.27	0.81
5:H:47:GLU:HG3	5:H:64:LYS:HG3	1.60	0.81
5:H:11:LEU:HD11	5:H:127:CYS:SG	2.20	0.81
1:A:785:G:N2	1:A:797:C:O2	2.11	0.81
13:U:51:SER:O	13:U:54:LYS:HG2	1.81	0.80
14:W:198:LEU:HD12	14:W:199:LYS:N	1.93	0.80
1:A:76:G:H1	1:A:93:U:H3	1.29	0.79
1:A:94:G:N2	1:A:97:G:N7	2.30	0.79
1:A:1526:G:P	13:U:42:THR:HG23	2.22	0.79
1:A:144:G:N1	1:A:178:C:N3	2.28	0.79
1:A:592:G:N2	1:A:647:C:O2	2.13	0.78
1:A:443:C:O2	1:A:491:G:N2	2.13	0.78
1:A:929:G:N2	1:A:1388:C:O2	2.12	0.78
8:O:29:VAL:HG13	8:O:63:ARG:HG3	1.64	0.78
4:F:42:TRP:CZ2	4:F:61:LEU:CD2	2.66	0.78
1:A:1415:G:O6	1:A:1485:U:O2	2.02	0.78
1:A:1448:C:O2	1:A:1455:G:N2	2.17	0.78
12:T:44:LYS:NZ	12:T:83:ILE:O	2.16	0.77
1:A:241:G:N2	1:A:285:C:O2	2.15	0.77
6:K:20:VAL:HG12	6:K:22:HIS:CD2	2.20	0.77
7:L:54:ARG:HH11	7:L:64:THR:HG23	1.50	0.77
1:A:207:C:N3	1:A:212:G:N1	2.26	0.77
1:A:713:G:H2'	1:A:714:G:C8	2.20	0.77
3:E:40:GLY:HA3	3:E:117:VAL:HG12	1.67	0.77
1:A:324:G:H22	1:A:327:A:H5'	1.49	0.76
1:A:69:G:N2	1:A:99:C:O2	2.13	0.76
8:O:12:VAL:HG21	8:O:22:THR:HG22	1.67	0.76
1:A:673:A:H2'	1:A:674:G:C8	2.21	0.76
1:A:679:C:O2	1:A:711:G:N2	2.14	0.76
14:W:211:ILE:HD11	14:W:267:SER:HB3	1.68	0.76
4:F:4:TYR:CE2	4:F:71:ILE:HD13	2.21	0.75

Continued on next page...

Continued from previous page...

Atom-1	Atom-2	Interatomic distance (Å)	Clash overlap (Å)
1:A:94:G:N1	1:A:97:G:O6	2.18	0.75
1:A:457:G:N2	1:A:475:C:O2	2.16	0.75
1:A:444:G:N2	1:A:490:C:O2	2.15	0.75
9:P:39:PHE:CD1	9:P:50:THR:HG22	2.22	0.75
1:A:295:C:O2	1:A:302:G:N2	2.14	0.74
2:D:45:LYS:NZ	2:D:46:PRO:O	2.21	0.74
7:L:50:ARG:HG3	7:L:90:LEU:HD21	1.68	0.74
14:W:56:SER:HB3	14:W:81:TRP:HZ2	1.52	0.74
7:L:54:ARG:NH1	7:L:64:THR:HG23	2.03	0.74
1:A:744:C:H2'	1:A:745:G:H8	1.52	0.73
1:A:1449:C:O2	1:A:1454:G:N2	2.14	0.73
1:A:1448:C:N3	1:A:1455:G:N1	2.33	0.73
1:A:261:U:OP2	12:T:74:ARG:NH1	2.21	0.73
1:A:443:C:N3	1:A:491:G:N1	2.28	0.73
1:A:929:G:N1	1:A:1388:C:N3	2.30	0.73
1:A:1418:A:N6	1:A:1482:G:O2'	2.22	0.73
2:D:48:LEU:HD13	2:D:53:VAL:N	2.03	0.73
1:A:254:G:N2	1:A:272:C:O2	2.18	0.73
1:A:1422:G:H1	1:A:1478:U:H3	1.34	0.73
5:H:77:ARG:HD2	5:H:127:CYS:SG	2.28	0.73
9:P:39:PHE:HD1	9:P:50:THR:HG22	1.53	0.73
1:A:679:C:N3	1:A:711:G:N1	2.33	0.72
6:K:64:GLN:HG2	6:K:99:ALA:HB2	1.70	0.72
3:E:16:ILE:HD11	3:E:36:LEU:HG	1.73	0.71
5:H:13:ARG:HD2	5:H:27:MET:HG3	1.73	0.71
1:A:843:U:H2'	1:A:844:G:C8	2.26	0.71
1:A:157:U:O2	1:A:164:G:O6	2.09	0.71
4:F:80:PHE:O	4:F:81:ASN:OD1	2.08	0.71
3:E:90:THR:HG22	3:E:91:GLY:N	2.04	0.71
1:A:138:G:N1	1:A:225:C:N3	2.33	0.70
1:A:714:G:H2'	1:A:715:A:C8	2.26	0.70
1:A:69:G:N1	1:A:99:C:N3	2.28	0.70
1:A:1415:G:O6	1:A:1485:U:C2	2.45	0.70
1:A:451:A:H61	1:A:481:G:H5'	1.56	0.70
1:A:514:C:H2'	1:A:515:G:H8	1.57	0.70
1:A:208:U:O2'	1:A:211:G:O6	2.10	0.69
1:A:457:G:N1	1:A:475:C:N3	2.30	0.69
5:H:77:ARG:CD	5:H:127:CYS:SG	2.81	0.69
1:A:841:C:N4	1:A:844:G:OP2	2.24	0.69
1:A:890:G:O2'	1:A:906:A:N6	2.26	0.69
1:A:1449:C:N4	1:A:1454:G:O6	2.25	0.68

Continued on next page...

Continued from previous page...

Atom-1	Atom-2	Interatomic distance (Å)	Clash overlap (Å)
1:A:841:C:C2	1:A:845:A:N6	2.62	0.68
1:A:1526:G:OP2	13:U:42:THR:HG23	1.93	0.68
1:A:241:G:N1	1:A:285:C:N3	2.31	0.68
2:D:16:GLY:O	2:D:17:THR:HG23	1.94	0.68
1:A:1530:G:N7	13:U:46:LYS:NZ	2.42	0.68
2:D:147:GLU:O	2:D:151:LYS:NZ	2.25	0.68
1:A:824:G:H2'	1:A:825:A:H8	1.59	0.67
11:R:10:PHE:HB2	11:R:46:GLY:HA3	1.76	0.67
1:A:147:G:H2'	1:A:148:G:C8	2.30	0.67
1:A:677:U:H3	1:A:713:G:H22	1.40	0.67
3:E:80:THR:HA	3:E:120:VAL:HG23	1.77	0.67
1:A:138:G:N2	1:A:225:C:O2	2.18	0.67
1:A:1517:G:O6	14:W:271:ARG:NH1	2.28	0.67
1:A:823:C:HO2'	5:H:2:SER:N	1.93	0.67
4:F:42:TRP:CE2	4:F:61:LEU:CD2	2.78	0.67
1:A:319:G:N2	1:A:334:C:O2	2.17	0.66
5:H:77:ARG:NE	5:H:79:SER:O	2.28	0.66
1:A:746:A:H2'	1:A:747:A:C8	2.30	0.66
1:A:521:G:OP2	7:L:51:LYS:NZ	2.28	0.66
2:D:172:GLU:HB2	2:D:183:LYS:HD3	1.77	0.66
1:A:922:G:H2'	1:A:923:A:C8	2.31	0.66
1:A:592:G:N1	1:A:647:C:N3	2.30	0.65
5:H:47:GLU:CG	5:H:64:LYS:CG	2.62	0.65
12:T:43:ASP:OD1	12:T:46:ALA:N	2.30	0.65
12:T:44:LYS:HZ2	12:T:86:LEU:HB3	1.61	0.65
5:H:74:SER:O	5:H:75:ILE:HG13	1.95	0.65
1:A:269:C:H2'	1:A:270:A:H8	1.61	0.65
3:E:16:ILE:HD11	3:E:36:LEU:CG	2.26	0.65
1:A:458:U:H2'	1:A:459:A:H8	1.61	0.65
1:A:1518:MA6:H103	14:W:271:ARG:HH12	1.62	0.65
1:A:790:A:N6	14:W:272:GLU:OE2	2.30	0.65
4:F:66:ALA:HB3	4:F:71:ILE:HD11	1.77	0.65
1:A:269:C:H2'	1:A:270:A:C8	2.32	0.65
1:A:562:U:OP2	7:L:15:LYS:NZ	2.29	0.65
5:H:106:THR:HG23	5:H:108:LYS:H	1.62	0.65
9:P:40:ASN:HB3	9:P:43:ALA:HB2	1.77	0.65
1:A:444:G:N1	1:A:490:C:N3	2.31	0.65
14:W:103:ARG:HD3	14:W:121:ALA:CB	2.27	0.65
1:A:1439:G:N2	1:A:1462:C:O2	2.18	0.64
3:E:23:LYS:HE3	3:E:30:ILE:HD11	1.78	0.64
1:A:471:U:H2'	1:A:472:U:H6	1.63	0.64

Continued on next page...

Continued from previous page...

Atom-1	Atom-2	Interatomic distance (Å)	Clash overlap (Å)
13:U:14:VAL:HG12	13:U:17:ARG:HH22	1.62	0.64
10:Q:17:MET:HB2	10:Q:20:SER:HB2	1.79	0.64
14:W:126:ILE:HG22	14:W:211:ILE:HG23	1.78	0.64
1:A:662:U:H2'	1:A:663:A:C8	2.34	0.64
10:Q:47:HIS:CD2	10:Q:67:LEU:CD2	2.80	0.64
1:A:321:A:H2'	1:A:322:C:H6	1.63	0.63
1:A:375:U:OP1	9:P:70:ARG:NH1	2.32	0.63
3:E:65:GLU:OE2	3:E:69:ARG:NH1	2.29	0.63
14:W:233:GLU:HG3	14:W:234:ILE:HG13	1.80	0.63
2:D:16:GLY:O	2:D:17:THR:CG2	2.46	0.63
1:A:745:G:H2'	1:A:746:A:C8	2.33	0.63
10:Q:45:HIS:HB3	10:Q:71:LYS:HG2	1.81	0.63
1:A:235:C:H2'	1:A:236:A:H8	1.64	0.62
1:A:344:A:OP2	1:A:345:C:N4	2.32	0.62
1:A:662:U:OP1	4:F:93:LYS:NZ	2.31	0.62
1:A:492:C:H2'	1:A:493:A:C8	2.34	0.62
1:A:517:G:N1	1:A:533:A:OP1	2.30	0.62
1:A:712:A:H2'	1:A:713:G:C8	2.34	0.62
1:A:319:G:N1	1:A:334:C:N3	2.33	0.62
4:F:6:ILE:HD12	4:F:6:ILE:H	1.65	0.62
7:L:99:ARG:NE	7:L:104:CYS:SG	2.72	0.62
5:H:77:ARG:HD2	5:H:127:CYS:HG	1.63	0.62
8:O:26:GLU:N	8:O:26:GLU:OE1	2.31	0.62
14:W:201:LEU:O	14:W:205:LEU:HG	1.99	0.61
1:A:335:C:H2'	1:A:336:A:H8	1.65	0.61
1:A:1439:G:N1	1:A:1462:C:N3	2.33	0.61
1:A:472:U:H2'	1:A:473:U:C6	2.35	0.61
1:A:652:U:O4	1:A:752:G:O2'	2.14	0.61
4:F:18:VAL:HG13	4:F:19:PRO:HD3	1.80	0.61
1:A:459:A:H2'	1:A:460:A:C8	2.35	0.61
1:A:471:U:H2'	1:A:472:U:C6	2.36	0.61
1:A:209:U:O2'	1:A:211:G:N7	2.33	0.61
1:A:202:G:H2'	1:A:203:G:H8	1.64	0.61
1:A:673:A:O3'	4:F:86:ARG:NH2	2.34	0.61
6:K:97:ILE:CD1	13:U:16:LEU:HD12	2.30	0.61
14:W:126:ILE:HG22	14:W:211:ILE:HG21	1.81	0.61
1:A:71:A:H61	1:A:99:C:H1'	1.67	0.60
14:W:35:LEU:HG	14:W:35:LEU:O	2.00	0.60
14:W:342:ARG:NE	14:W:344:ASN:HB2	2.16	0.60
1:A:826:C:O2	5:H:16:ASN:ND2	2.34	0.60
2:D:35:GLU:N	2:D:35:GLU:OE1	2.34	0.60

Continued on next page...

Continued from previous page...

Atom-1	Atom-2	Interatomic distance (Å)	Clash overlap (Å)
12:T:35:VAL:HG11	12:T:79:LEU:HD13	1.81	0.60
1:A:785:G:N1	1:A:797:C:N3	2.33	0.60
3:E:40:GLY:CA	3:E:117:VAL:HG12	2.30	0.60
5:H:47:GLU:HG2	5:H:64:LYS:HG2	1.80	0.60
9:P:50:THR:CG2	9:P:74:LEU:HD22	2.30	0.60
2:D:45:LYS:HG3	2:D:47:ARG:HH22	1.67	0.60
1:A:299:G:H2'	1:A:300:A:C8	2.37	0.60
8:O:25:THR:O	8:O:25:THR:HG22	2.01	0.60
12:T:60:ARG:HH11	12:T:60:ARG:HB2	1.66	0.60
1:A:337:G:H2'	1:A:338:A:C8	2.36	0.59
14:W:103:ARG:HD3	14:W:121:ALA:HB2	1.84	0.59
1:A:1518:MA6:N6	1:A:1519:MA6:H103	2.17	0.59
2:D:160:GLU:OE1	2:D:160:GLU:N	2.32	0.59
2:D:188:ARG:O	2:D:188:ARG:NH1	2.35	0.59
3:E:16:ILE:HD11	3:E:36:LEU:HD23	1.83	0.59
13:U:4:ILE:HG13	13:U:19:PHE:HA	1.84	0.59
1:A:216:U:H2'	1:A:217:C:C6	2.36	0.59
1:A:295:C:N3	1:A:302:G:N1	2.32	0.59
1:A:321:A:H2'	1:A:322:C:C6	2.38	0.59
1:A:405:U:O4	2:D:2:ALA:N	2.35	0.59
1:A:738:C:OP1	4:F:2:ARG:NH1	2.36	0.59
14:W:199:LYS:HG2	14:W:203:GLU:OE2	2.02	0.59
1:A:512:U:P	2:D:44:ARG:HH12	2.24	0.59
1:A:613:C:H2'	1:A:614:C:C6	2.37	0.59
3:E:93:ARG:CG	3:E:128:TYR:HB2	2.33	0.59
8:O:33:THR:HG22	8:O:63:ARG:HH11	1.67	0.59
7:L:47:SER:OG	14:W:68:ARG:HG3	2.03	0.59
1:A:107:G:O6	12:T:10:ARG:HD2	2.03	0.59
1:A:297:G:N2	1:A:300:A:OP2	2.32	0.59
1:A:1496:C:OP1	14:W:109:ARG:NH2	2.32	0.59
3:E:115:LEU:HD13	3:E:123:VAL:HG11	1.85	0.59
14:W:198:LEU:HD12	14:W:199:LYS:HA	1.83	0.59
1:A:1428:A:H2'	1:A:1429:A:H8	1.68	0.59
5:H:18:GLN:HE21	5:H:72:VAL:HG22	1.68	0.58
14:W:198:LEU:HD12	14:W:199:LYS:CA	2.32	0.58
1:A:8:A:N6	2:D:202:GLU:O	2.35	0.58
1:A:1412:C:H2'	1:A:1413:A:C8	2.38	0.58
1:A:458:U:H2'	1:A:459:A:C8	2.37	0.58
1:A:714:G:H2'	1:A:715:A:H8	1.68	0.58
4:F:29:ILE:HD13	4:F:70:VAL:CG1	2.33	0.58
1:A:1526:G:O5'	13:U:42:THR:CG2	2.51	0.58

Continued on next page...

Continued from previous page...

Atom-1	Atom-2	Interatomic distance (Å)	Clash overlap (Å)
3:E:45:ARG:HG2	3:E:71:MET:HE2	1.84	0.58
14:W:298:LYS:HG2	14:W:309:GLY:HA3	1.84	0.58
1:A:715:A:H2'	1:A:716:A:C8	2.39	0.58
2:D:118:VAL:CG2	2:D:123:ILE:HD12	2.33	0.58
13:U:62:ARG:O	13:U:66:ARG:NH1	2.37	0.58
1:A:707:U:H4'	6:K:22:HIS:ND1	2.18	0.58
3:E:54:ARG:O	3:E:55:GLU:HG3	2.04	0.58
4:F:86:ARG:NH1	11:R:64:TYR:O	2.37	0.58
14:W:342:ARG:HE	14:W:344:ASN:CB	2.17	0.58
5:H:10:MET:HG3	5:H:27:MET:HG2	1.86	0.58
1:A:50:A:O2'	1:A:360:G:N2	2.37	0.58
1:A:254:G:N1	1:A:272:C:N3	2.37	0.58
2:D:95:GLU:OE1	2:D:100:ASN:ND2	2.34	0.58
14:W:154:GLU:OE1	14:W:186:ARG:NH2	2.36	0.58
1:A:337:G:H2'	1:A:338:A:H8	1.69	0.57
1:A:539:A:OP2	7:L:112:GLN:NE2	2.36	0.57
1:A:677:U:O2	1:A:777:A:O2'	2.21	0.57
11:R:47:THR:HG22	11:R:48:ARG:N	2.19	0.57
2:D:45:LYS:O	2:D:47:ARG:NH1	2.36	0.57
10:Q:28:PHE:CE2	10:Q:37:PHE:HB3	2.39	0.57
3:E:16:ILE:HG13	3:E:36:LEU:O	2.04	0.57
1:A:202:G:H2'	1:A:203:G:C8	2.40	0.57
7:L:20:ASN:OD1	7:L:21:VAL:HG13	2.05	0.57
1:A:1428:A:H2'	1:A:1429:A:C8	2.39	0.57
1:A:41:G:H2'	1:A:42:G:H8	1.68	0.57
4:F:40:GLU:O	4:F:61:LEU:HG	2.05	0.57
1:A:235:C:H2'	1:A:236:A:C8	2.38	0.57
1:A:701:U:O2	1:A:703:G:N1	2.38	0.57
1:A:745:G:H2'	1:A:746:A:H8	1.69	0.57
4:F:63:ASN:ND2	4:F:96:VAL:O	2.38	0.57
13:U:63:GLU:OE2	13:U:66:ARG:NH1	2.38	0.57
2:D:151:LYS:O	2:D:156:LYS:NZ	2.35	0.57
14:W:198:LEU:O	14:W:201:LEU:N	2.38	0.57
14:W:342:ARG:HG2	14:W:344:ASN:H	1.69	0.57
12:T:26:SER:O	12:T:30:THR:HG23	2.04	0.57
14:W:323:GLU:H	14:W:323:GLU:CD	2.07	0.57
1:A:310:G:H5''	9:P:31:ARG:HB3	1.87	0.57
1:A:686:U:O4	1:A:703:G:H1'	2.04	0.57
7:L:79:VAL:HG12	7:L:102:LEU:HD11	1.86	0.57
1:A:1524:C:H2'	1:A:1525:G:C8	2.39	0.56
8:O:37:ASN:O	8:O:40:GLN:NE2	2.25	0.56

Continued on next page...

Continued from previous page...

Atom-1	Atom-2	Interatomic distance (Å)	Clash overlap (Å)
1:A:216:U:H2'	1:A:217:C:H6	1.70	0.56
1:A:384:G:H2'	1:A:385:C:C6	2.40	0.56
1:A:108:G:C6	12:T:10:ARG:HD3	2.41	0.56
8:O:88:ARG:O	8:O:88:ARG:HG3	2.05	0.56
14:W:127:VAL:O	14:W:127:VAL:HG13	2.05	0.56
1:A:1422:G:N2	1:A:1478:U:O2	2.33	0.56
1:A:1431:A:H2'	1:A:1432:G:C8	2.41	0.56
10:Q:5:ILE:HD12	10:Q:62:ARG:HD3	1.87	0.56
1:A:501:C:H2'	1:A:502:A:H8	1.69	0.56
1:A:1420:U:H2'	1:A:1421:G:C8	2.41	0.56
12:T:24:ARG:O	12:T:27:MET:HG3	2.05	0.56
1:A:236:A:H2'	1:A:237:G:C8	2.41	0.56
1:A:460:A:H2'	1:A:461:A:H8	1.71	0.56
1:A:636:U:H5''	10:Q:6:ARG:HE	1.70	0.56
5:H:13:ARG:NH1	5:H:26:THR:O	2.38	0.56
14:W:288:VAL:HA	14:W:291:HIS:CE1	2.41	0.56
6:K:45:ALA:O	6:K:46:THR:HG23	2.06	0.56
4:F:80:PHE:O	4:F:81:ASN:CG	2.44	0.56
9:P:39:PHE:HD1	9:P:50:THR:CG2	2.19	0.56
14:W:105:SER:OG	14:W:123:ILE:O	2.21	0.56
1:A:728:A:H2'	1:A:729:A:C8	2.40	0.56
6:K:83:GLU:HG2	6:K:109:ASN:HB3	1.88	0.56
1:A:922:G:H2'	1:A:923:A:H8	1.68	0.55
1:A:1410:A:OP1	14:W:63:ARG:NH1	2.39	0.55
5:H:90:ASP:N	5:H:90:ASP:OD1	2.37	0.55
1:A:410:G:OP1	2:D:26:ARG:NH1	2.39	0.55
1:A:522:C:H41	7:L:50:ARG:HH22	1.54	0.55
1:A:268:U:H2'	1:A:269:C:H6	1.72	0.55
1:A:757:U:OP1	1:A:822:U:O2'	2.24	0.55
1:A:1404:C:H2'	1:A:1405:G:C8	2.41	0.55
1:A:537:G:H2'	1:A:538:G:H8	1.71	0.55
1:A:911:U:H2'	1:A:912:C:C6	2.42	0.55
2:D:27:ALA:O	2:D:30:THR:OG1	2.22	0.55
1:A:261:U:OP2	12:T:71:LYS:NZ	2.34	0.55
2:D:48:LEU:HD12	2:D:49:SER:O	2.06	0.55
5:H:58:GLU:N	5:H:58:GLU:OE1	2.39	0.55
1:A:686:U:HO2'	1:A:687:A:H8	1.53	0.55
1:A:1391:U:H2'	1:A:1392:G:C8	2.42	0.55
3:E:14:LYS:HB3	3:E:38:VAL:HG12	1.89	0.55
1:A:501:C:H2'	1:A:502:A:C8	2.42	0.55
1:A:715:A:H2'	1:A:716:A:H8	1.72	0.55

Continued on next page...

Continued from previous page...

Atom-1	Atom-2	Interatomic distance (Å)	Clash overlap (Å)
2:D:86:THR:HG23	2:D:201:VAL:HG21	1.89	0.55
5:H:27:MET:SD	5:H:27:MET:N	2.80	0.55
2:D:102:VAL:CG2	2:D:123:ILE:HD13	2.29	0.55
4:F:47:LEU:HD21	4:F:57:ALA:HB3	1.87	0.55
1:A:384:G:H2'	1:A:385:C:H6	1.70	0.55
1:A:474:G:OP1	9:P:80:LYS:NZ	2.29	0.55
7:L:54:ARG:HH11	7:L:64:THR:CG2	2.19	0.55
1:A:56:U:H2'	1:A:57:G:C8	2.42	0.54
1:A:56:U:H2'	1:A:57:G:H8	1.72	0.54
1:A:131:A:H2'	1:A:132:C:C6	2.43	0.54
6:K:84:VAL:CG1	6:K:110:ILE:HG23	2.38	0.54
1:A:202:G:HO2'	1:A:468:A:H8	1.56	0.54
1:A:500:G:H2'	1:A:501:C:C6	2.42	0.54
4:F:32:ALA:O	4:F:33:GLU:HG3	2.08	0.54
5:H:77:ARG:HD3	5:H:127:CYS:SG	2.47	0.54
1:A:34:C:H2'	1:A:35:G:H8	1.73	0.54
1:A:298:A:O2'	1:A:299:G:OP1	2.26	0.54
1:A:358:U:H2'	1:A:359:G:H8	1.72	0.54
1:A:512:U:H2'	1:A:513:C:C6	2.42	0.54
1:A:539:A:H2'	1:A:540:G:C8	2.42	0.54
1:A:868:C:H2'	1:A:869:G:O4'	2.07	0.54
2:D:48:LEU:CD1	2:D:49:SER:O	2.56	0.54
5:H:11:LEU:CD1	5:H:127:CYS:SG	2.95	0.54
1:A:268:U:H2'	1:A:269:C:C6	2.43	0.54
14:W:222:SER:OG	17:W:402:GNP:H8	2.07	0.54
14:W:257:HIS:ND1	14:W:263:ASP:OD1	2.38	0.54
4:F:12:PRO:HD3	4:F:57:ALA:HA	1.90	0.54
6:K:92:GLY:O	6:K:96:THR:HG23	2.08	0.54
1:A:339:C:H2'	1:A:340:U:C6	2.43	0.54
1:A:637:C:H5''	10:Q:4:LYS:HD3	1.90	0.54
10:Q:47:HIS:CG	10:Q:67:LEU:CD2	2.91	0.54
13:U:46:LYS:HA	13:U:49:LYS:HG2	1.90	0.54
1:A:320:A:H2'	1:A:321:A:C8	2.43	0.54
1:A:1474:U:H2'	1:A:1475:G:C8	2.42	0.54
1:A:279:A:H5''	1:A:281:G:O4'	2.08	0.54
1:A:41:G:H2'	1:A:42:G:C8	2.43	0.54
8:O:44:ALA:O	8:O:47:LYS:NZ	2.36	0.54
1:A:447:G:N1	1:A:486:U:OP2	2.32	0.53
1:A:843:U:H2'	1:A:844:G:H8	1.73	0.53
1:A:928:G:O2'	1:A:1533:C:OP1	2.26	0.53
1:A:1425:U:H2'	1:A:1426:G:C8	2.43	0.53

Continued on next page...

Continued from previous page...

Atom-1	Atom-2	Interatomic distance (Å)	Clash overlap (Å)
1:A:1504:G:OP1	1:A:1507:A:H4'	2.08	0.53
6:K:45:ALA:O	6:K:46:THR:CG2	2.57	0.53
1:A:691:G:H2'	1:A:692:U:C6	2.44	0.53
14:W:39:PRO:HA	14:W:82:ARG:HB3	1.91	0.53
3:E:40:GLY:N	3:E:117:VAL:CG1	2.72	0.53
3:E:62:LYS:O	3:E:66:LYS:HG3	2.08	0.53
10:Q:47:HIS:CB	10:Q:67:LEU:HD22	2.39	0.53
14:W:198:LEU:HD12	14:W:198:LEU:C	2.29	0.53
1:A:763:G:H2'	1:A:764:C:C6	2.44	0.53
1:A:1439:G:H2'	1:A:1440:U:C6	2.44	0.53
5:H:72:VAL:HB	5:H:75:ILE:HD11	1.90	0.53
13:U:46:LYS:O	13:U:49:LYS:HG2	2.09	0.53
14:W:314:GLU:HA	14:W:317:GLU:HG2	1.91	0.53
1:A:585:G:OP1	10:Q:39:LYS:NZ	2.40	0.53
1:A:223:A:H2'	1:A:224:U:C6	2.45	0.52
1:A:459:A:H2'	1:A:460:A:H8	1.74	0.52
1:A:744:C:H2'	1:A:745:G:C8	2.40	0.52
5:H:83:LEU:HD12	7:L:4:VAL:HG11	1.92	0.52
1:A:339:C:H2'	1:A:340:U:H6	1.75	0.52
6:K:83:GLU:HG3	6:K:108:THR:HB	1.91	0.52
9:P:69:ASP:OD1	9:P:70:ARG:N	2.41	0.52
1:A:219:U:H2'	1:A:220:G:H8	1.74	0.52
1:A:401:C:O2'	1:A:621:A:N3	2.39	0.52
1:A:685:G:O2'	1:A:686:U:H5''	2.10	0.52
4:F:6:ILE:HG23	4:F:89:VAL:HG22	1.90	0.52
1:A:398:U:H2'	1:A:399:G:H8	1.74	0.52
1:A:470:C:H2'	1:A:471:U:C6	2.45	0.52
2:D:188:ARG:HH22	2:D:193:ALA:HA	1.75	0.52
6:K:87:LYS:HB3	6:K:113:VAL:HG23	1.91	0.52
14:W:113:TYR:HA	14:W:342:ARG:CZ	2.40	0.52
3:E:164:ILE:HG22	3:E:164:ILE:O	2.09	0.52
14:W:126:ILE:HD11	14:W:128:ILE:HD11	1.90	0.52
1:A:17:U:H2'	1:A:18:C:C6	2.45	0.52
1:A:460:A:H2'	1:A:461:A:C8	2.45	0.52
1:A:126:G:OP1	1:A:605:U:O2'	2.19	0.51
1:A:1513:A:H2'	1:A:1514:G:H8	1.74	0.51
1:A:343:U:O2'	1:A:346:G:O6	2.17	0.51
1:A:407:U:H2'	1:A:408:A:H8	1.76	0.51
3:E:11:LEU:HD11	3:E:71:MET:CE	2.40	0.51
4:F:38:ARG:HB3	4:F:63:ASN:HB3	1.92	0.51
13:U:28:VAL:HG13	13:U:29:LEU:HD22	1.92	0.51

Continued on next page...

Continued from previous page...

Atom-1	Atom-2	Interatomic distance (Å)	Clash overlap (Å)
1:A:908:A:H2'	1:A:909:A:H8	1.75	0.51
1:A:1457:G:OP1	12:T:34:LYS:NZ	2.28	0.51
1:A:35:G:H2'	1:A:36:C:C6	2.45	0.51
1:A:909:A:OP2	7:L:18:LYS:NZ	2.44	0.51
11:R:37:GLY:O	11:R:63:ARG:NH2	2.40	0.51
1:A:470:C:H2'	1:A:471:U:H6	1.76	0.51
1:A:704:A:C4	1:A:705:G:C8	2.98	0.51
1:A:1486:G:H2'	1:A:1487:G:C8	2.45	0.51
2:D:138:SER:OG	2:D:139:PRO:HD2	2.11	0.51
7:L:21:VAL:HG23	7:L:21:VAL:O	2.11	0.51
1:A:811:C:O2'	1:A:901:A:N1	2.40	0.51
1:A:844:G:C5	1:A:845:A:H1'	2.45	0.51
2:D:16:GLY:C	2:D:17:THR:HG23	2.31	0.51
1:A:285:C:H2'	1:A:286:C:C6	2.46	0.51
1:A:468:A:H3'	1:A:469:C:H6	1.74	0.51
1:A:1419:G:N2	1:A:1481:U:O2	2.37	0.51
2:D:102:VAL:HG21	2:D:123:ILE:CD1	2.29	0.51
6:K:20:VAL:HG12	6:K:22:HIS:HD2	1.70	0.51
1:A:771:G:H2'	1:A:772:U:C6	2.45	0.51
1:A:265:G:N2	1:A:267:C:H5'	2.26	0.51
6:K:20:VAL:HG13	6:K:83:GLU:O	2.11	0.51
1:A:1507:A:H2'	1:A:1508:A:C8	2.46	0.51
1:A:1527:U:H2'	1:A:1528:U:C6	2.46	0.51
5:H:77:ARG:HD2	5:H:126:ILE:O	2.11	0.50
10:Q:38:ILE:CD1	10:Q:40:ARG:NH2	2.73	0.50
14:W:110:PRO:HA	14:W:116:VAL:HA	1.92	0.50
1:A:67:C:H2'	1:A:68:G:C8	2.46	0.50
1:A:545:C:OP1	2:D:62:ARG:NH1	2.30	0.50
1:A:1518:MA6:H8	1:A:1518:MA6:OP2	2.11	0.50
5:H:52:GLU:O	5:H:57:PRO:HA	2.11	0.50
1:A:1464:U:H2'	1:A:1465:A:H8	1.76	0.50
5:H:74:SER:C	5:H:75:ILE:HG13	2.32	0.50
14:W:276:TRP:HB3	14:W:339:VAL:HG23	1.92	0.50
2:D:99:ASP:OD1	2:D:100:ASN:N	2.44	0.50
1:A:222:C:H2'	1:A:223:A:H8	1.77	0.50
1:A:323:U:H2'	1:A:324:G:O4'	2.12	0.50
9:P:39:PHE:CD1	9:P:50:THR:CG2	2.93	0.50
1:A:195:A:H2'	1:A:196:A:C8	2.47	0.50
2:D:54:GLN:HA	2:D:199:LEU:HD13	1.94	0.50
4:F:19:PRO:HA	4:F:22:ILE:HG12	1.93	0.50
10:Q:38:ILE:HD12	10:Q:40:ARG:NH2	2.27	0.50

Continued on next page...

Continued from previous page...

Atom-1	Atom-2	Interatomic distance (Å)	Clash overlap (Å)
1:A:801:U:H2'	1:A:802:A:H8	1.76	0.50
12:T:44:LYS:NZ	12:T:86:LEU:HB3	2.27	0.50
1:A:312:C:H2'	1:A:313:A:C8	2.46	0.50
1:A:472:U:H2'	1:A:473:U:H6	1.75	0.50
1:A:512:U:OP1	2:D:44:ARG:NH1	2.38	0.50
6:K:13:ARG:N	6:K:76:GLU:HB2	2.27	0.50
1:A:155:A:H2'	1:A:156:C:C6	2.47	0.50
1:A:478:A:H2'	1:A:479:U:O4'	2.12	0.50
1:A:538:G:H2'	1:A:539:A:H8	1.77	0.50
1:A:642:A:N7	5:H:107:SER:HA	2.27	0.50
10:Q:38:ILE:HD11	10:Q:40:ARG:HE	1.77	0.50
12:T:44:LYS:HE2	12:T:87:ALA:HB3	1.94	0.50
1:A:273:U:O4	1:A:274:A:N6	2.45	0.49
1:A:579:A:H2'	1:A:580:C:C6	2.47	0.49
1:A:606:G:N2	1:A:632:U:OP1	2.36	0.49
1:A:1510:C:H2'	1:A:1511:G:C8	2.47	0.49
14:W:45:ILE:HB	14:W:53:ASP:OD2	2.12	0.49
14:W:310:CYS:SG	14:W:313:ARG:HB2	2.52	0.49
1:A:138:G:O6	1:A:225:C:N4	2.33	0.49
1:A:728:A:H2'	1:A:729:A:H8	1.76	0.49
1:A:589:U:H5''	5:H:30:SER:OG	2.13	0.49
1:A:642:A:N3	5:H:105:SER:OG	2.45	0.49
1:A:846:G:H2'	1:A:847:G:C8	2.48	0.49
1:A:1513:A:H2'	1:A:1514:G:C8	2.47	0.49
2:D:201:VAL:O	2:D:205:SER:OG	2.19	0.49
6:K:82:LEU:HD21	6:K:107:ILE:HD13	1.94	0.49
1:A:1477:U:H2'	1:A:1478:U:C6	2.47	0.49
14:W:289:GLU:OE2	14:W:325:ARG:NE	2.27	0.49
1:A:358:U:H2'	1:A:359:G:C8	2.46	0.49
1:A:1402:4OC:HM22	1:A:1403:C:H5'	1.95	0.49
14:W:66:ILE:HG23	14:W:70:ILE:HD12	1.95	0.49
1:A:512:U:H2'	1:A:513:C:H6	1.77	0.49
11:R:32:TYR:CG	11:R:55:LEU:HD21	2.47	0.49
1:A:707:U:H2'	1:A:708:C:C6	2.48	0.49
1:A:707:U:H2'	1:A:708:C:H6	1.78	0.49
14:W:103:ARG:HD3	14:W:121:ALA:HB1	1.94	0.49
14:W:198:LEU:O	14:W:201:LEU:HB3	2.11	0.49
1:A:427:U:OP2	1:A:428:G:O2'	2.20	0.48
1:A:840:C:H2'	1:A:841:C:O4'	2.13	0.48
1:A:876:C:H1'	5:H:12:THR:HG21	1.95	0.48
10:Q:38:ILE:HD12	10:Q:40:ARG:CZ	2.42	0.48

Continued on next page...

Continued from previous page...

Atom-1	Atom-2	Interatomic distance (Å)	Clash overlap (Å)
10:Q:47:HIS:CD2	10:Q:67:LEU:HD23	2.47	0.48
13:U:31:GLU:OE2	13:U:35:ARG:NE	2.38	0.48
14:W:126:ILE:CD1	14:W:128:ILE:HD11	2.43	0.48
12:T:60:ARG:HG3	12:T:61:GLN:N	2.28	0.48
14:W:162:ILE:HG21	14:W:189:MET:HB3	1.96	0.48
14:W:288:VAL:HA	14:W:291:HIS:HE1	1.77	0.48
1:A:6:G:H1	3:E:103:THR:HG21	1.78	0.48
1:A:236:A:H2'	1:A:237:G:H8	1.78	0.48
1:A:278:G:OP2	10:Q:43:LYS:NZ	2.37	0.48
1:A:468:A:H3'	1:A:469:C:C6	2.48	0.48
1:A:834:U:H2'	1:A:835:U:C6	2.49	0.48
1:A:1420:U:H2'	1:A:1421:G:H8	1.79	0.48
7:L:101:ALA:O	7:L:102:LEU:HG	2.13	0.48
14:W:176:GLN:N	14:W:176:GLN:OE1	2.46	0.48
1:A:390:U:H2'	1:A:391:G:C8	2.49	0.48
1:A:923:A:H2'	1:A:924:C:C6	2.48	0.48
1:A:1526:G:P	13:U:42:THR:CG2	2.98	0.48
2:D:172:GLU:OE1	2:D:173:VAL:N	2.47	0.48
3:E:153:VAL:HA	3:E:156:LYS:HZ3	1.78	0.48
14:W:43:ILE:HG22	14:W:44:VAL:N	2.29	0.48
1:A:35:G:H2'	1:A:36:C:H6	1.79	0.48
1:A:524:G:H2'	1:A:525:C:C6	2.48	0.48
2:D:118:VAL:HG22	2:D:123:ILE:HD12	1.96	0.48
14:W:173:VAL:HA	14:W:176:GLN:NE2	2.29	0.48
1:A:309:A:H2'	1:A:310:G:H8	1.79	0.48
1:A:1474:U:H2'	1:A:1475:G:H8	1.78	0.48
10:Q:54:GLY:N	10:Q:57:ASP:OD2	2.40	0.48
12:T:66:LEU:HD23	12:T:67:ILE:HG23	1.96	0.48
1:A:335:C:H2'	1:A:336:A:C8	2.47	0.47
1:A:502:A:O3'	7:L:116:LYS:NZ	2.47	0.47
6:K:45:ALA:C	6:K:46:THR:HG23	2.35	0.47
8:O:79:THR:HA	8:O:82:ILE:HG12	1.95	0.47
12:T:60:ARG:HB2	12:T:60:ARG:NH1	2.29	0.47
14:W:112:PHE:CZ	14:W:342:ARG:HB2	2.49	0.47
1:A:123:U:H2'	1:A:124:C:H6	1.78	0.47
1:A:178:C:C2	1:A:179:A:C8	3.02	0.47
1:A:285:C:H2'	1:A:286:C:H6	1.79	0.47
1:A:471:U:HO2'	1:A:472:U:P	2.36	0.47
1:A:591:U:OP2	5:H:31:LYS:NZ	2.33	0.47
1:A:635:A:H2'	1:A:636:U:C6	2.49	0.47
1:A:1510:C:H2'	1:A:1511:G:H8	1.78	0.47

Continued on next page...

Continued from previous page...

Atom-1	Atom-2	Interatomic distance (Å)	Clash overlap (Å)
14:W:38:GLU:HG2	14:W:39:PRO:HD2	1.95	0.47
14:W:311:ALA:O	14:W:314:GLU:HG2	2.14	0.47
14:W:342:ARG:NE	14:W:344:ASN:CB	2.77	0.47
1:A:791:G:O6	1:A:792:A:N6	2.48	0.47
1:A:801:U:H2'	1:A:802:A:C8	2.50	0.47
3:E:11:LEU:CD1	3:E:71:MET:HE3	2.44	0.47
6:K:97:ILE:HD12	13:U:16:LEU:HD12	1.96	0.47
1:A:217:C:H2'	1:A:218:U:C6	2.49	0.47
1:A:545:C:P	2:D:62:ARG:HH12	2.35	0.47
1:A:705:G:C5	1:A:706:A:C8	3.02	0.47
5:H:106:THR:HG23	5:H:108:LYS:N	2.30	0.47
6:K:89:PRO:HB3	13:U:32:VAL:HG21	1.96	0.47
14:W:212:PHE:O	14:W:267:SER:OG	2.21	0.47
1:A:640:A:O3'	5:H:108:LYS:NZ	2.47	0.47
1:A:1460:C:C2	1:A:1461:G:C8	3.02	0.47
5:H:95:VAL:HG23	5:H:102:ALA:HB2	1.95	0.47
11:R:66:SER:O	11:R:66:SER:OG	2.31	0.47
14:W:113:TYR:HA	14:W:342:ARG:NH2	2.29	0.47
1:A:466:A:H4'	1:A:467:U:H5	1.79	0.47
1:A:628:G:H2'	1:A:629:A:C8	2.49	0.47
1:A:918:A:H2'	1:A:919:A:C8	2.50	0.47
1:A:1452:C:H4'	1:A:1453:G:O4'	2.14	0.47
2:D:76:TYR:HA	2:D:90:LEU:HD12	1.96	0.47
14:W:111:ASP:O	14:W:115:GLY:N	2.48	0.47
14:W:125:GLN:HE21	14:W:156:ILE:HG21	1.79	0.47
1:A:144:G:O6	1:A:178:C:N4	2.35	0.47
1:A:154:U:H2'	1:A:155:A:H8	1.79	0.47
1:A:713:G:H2'	1:A:714:G:H8	1.77	0.47
1:A:1488:G:H2'	1:A:1489:G:H8	1.79	0.47
1:A:1530:G:H2'	1:A:1531:A:H8	1.80	0.47
2:D:86:THR:HG21	2:D:201:VAL:HG11	1.96	0.47
3:E:24:THR:HA	3:E:29:ARG:HA	1.96	0.47
4:F:99:ALA:HB1	4:F:103:VAL:HG23	1.97	0.47
5:H:72:VAL:O	5:H:72:VAL:HG23	2.14	0.47
11:R:71:THR:HG23	11:R:74:HIS:H	1.79	0.47
1:A:219:U:H2'	1:A:220:G:C8	2.48	0.47
1:A:418:C:H2'	1:A:419:C:C6	2.50	0.47
1:A:672:U:H2'	1:A:673:A:H8	1.80	0.47
1:A:1524:C:H2'	1:A:1525:G:H8	1.80	0.47
2:D:65:TYR:CD2	2:D:94:LEU:HD13	2.50	0.47
3:E:37:THR:HG21	3:E:64:MET:HG3	1.96	0.47

Continued on next page...

Continued from previous page...

Atom-1	Atom-2	Interatomic distance (Å)	Clash overlap (Å)
8:O:74:ASP:OD2	8:O:77:ARG:NE	2.27	0.47
1:A:539:A:H2'	1:A:540:G:H8	1.80	0.47
1:A:672:U:H2'	1:A:673:A:C8	2.49	0.47
1:A:736:C:H2'	1:A:737:C:C6	2.49	0.47
1:A:1497:G:H4'	14:W:271:ARG:HD3	1.97	0.47
6:K:86:VAL:HG21	6:K:93:ARG:HB3	1.97	0.47
9:P:19:VAL:HG23	9:P:71:VAL:HG21	1.97	0.47
12:T:30:THR:HA	12:T:33:LYS:HG2	1.97	0.47
1:A:552:U:C2	1:A:553:A:C8	3.02	0.47
1:A:674:G:N2	6:K:118:HIS:HB2	2.30	0.47
1:A:827:U:H2'	1:A:870:U:O4	2.14	0.47
1:A:71:A:N1	1:A:99:C:O2'	2.42	0.46
1:A:160:A:H2'	1:A:161:A:C8	2.50	0.46
1:A:563:A:O2'	1:A:566:G:O3'	2.33	0.46
1:A:1465:A:H2'	1:A:1466:C:C6	2.50	0.46
5:H:5:ASP:CG	5:H:77:ARG:HH12	2.18	0.46
14:W:253:ALA:HA	14:W:266:ASP:O	2.16	0.46
14:W:308:PRO:HA	14:W:313:ARG:HH22	1.80	0.46
1:A:275:G:H5'	10:Q:16:LYS:HD3	1.96	0.46
1:A:1527:U:OP2	13:U:42:THR:HG22	2.15	0.46
5:H:83:LEU:CD1	7:L:4:VAL:HG21	2.46	0.46
12:T:43:ASP:OD1	12:T:45:ALA:N	2.49	0.46
6:K:109:ASN:HB2	13:U:5:LYS:HD2	1.97	0.46
9:P:19:VAL:HG13	9:P:19:VAL:O	2.15	0.46
14:W:258:PHE:HD2	14:W:261:GLY:H	1.63	0.46
1:A:157:U:O2	1:A:164:G:C6	2.67	0.46
1:A:201:G:H2'	1:A:202:G:C8	2.50	0.46
1:A:642:A:C5	5:H:107:SER:HA	2.50	0.46
1:A:846:G:H2'	1:A:847:G:H8	1.80	0.46
1:A:1415:G:H3'	1:A:1416:G:H8	1.80	0.46
6:K:35:THR:HA	6:K:42:LEU:HG	1.97	0.46
7:L:67:ILE:HD13	7:L:74:LEU:HD12	1.95	0.46
12:T:25:ARG:HB3	12:T:66:LEU:HD21	1.97	0.46
14:W:324:THR:O	14:W:328:ASN:ND2	2.37	0.46
1:A:636:U:H2'	1:A:637:C:C6	2.51	0.46
1:A:847:G:H2'	1:A:848:C:C6	2.50	0.46
3:E:136:VAL:O	3:E:140:THR:HG22	2.15	0.46
14:W:331:ARG:O	14:W:334:GLU:HG3	2.14	0.46
1:A:95:C:H2'	1:A:96:U:H6	1.81	0.46
1:A:338:A:H2'	1:A:339:C:C6	2.51	0.46
1:A:399:G:H2'	1:A:400:C:C6	2.50	0.46

Continued on next page...

Continued from previous page...

Atom-1	Atom-2	Interatomic distance (Å)	Clash overlap (Å)
1:A:618:C:N4	1:A:621:A:OP2	2.41	0.46
2:D:48:LEU:CD1	2:D:53:VAL:HB	2.38	0.46
3:E:77:ASN:OD1	3:E:77:ASN:N	2.48	0.46
1:A:313:A:H2'	1:A:314:C:C6	2.51	0.46
1:A:613:C:H2'	1:A:614:C:H6	1.78	0.46
1:A:752:G:H5''	8:O:73:LYS:NZ	2.29	0.46
2:D:154:ARG:HG3	2:D:155:VAL:N	2.30	0.46
7:L:33:VAL:HG22	7:L:79:VAL:HG22	1.98	0.46
12:T:12:ILE:O	12:T:15:GLU:HG3	2.16	0.46
1:A:398:U:H2'	1:A:399:G:C8	2.51	0.46
3:E:44:GLY:O	3:E:74:VAL:N	2.48	0.46
14:W:125:GLN:O	14:W:210:SER:HA	2.15	0.46
14:W:293:TYR:HA	14:W:296:LEU:HD12	1.98	0.46
1:A:208:U:H2'	1:A:210:C:N3	2.31	0.46
1:A:380:G:N2	1:A:383:A:OP2	2.35	0.46
1:A:624:C:H4'	9:P:10:GLY:HA2	1.98	0.46
7:L:79:VAL:O	7:L:103:ASP:HB2	2.16	0.46
12:T:28:MET:O	12:T:32:ILE:HG23	2.16	0.46
1:A:558:G:OP2	1:A:559:A:O2'	2.28	0.46
1:A:679:C:H2'	1:A:680:C:H6	1.80	0.46
1:A:1458:G:OP1	12:T:30:THR:HG21	2.16	0.46
6:K:36:ASP:OD1	6:K:40:ASN:N	2.48	0.46
11:R:40:VAL:HG13	11:R:44:ILE:HD11	1.97	0.46
12:T:44:LYS:HD3	12:T:86:LEU:HD22	1.98	0.46
1:A:280:C:N3	10:Q:41:THR:HG23	2.31	0.45
1:A:377:G:H2'	1:A:378:G:H8	1.80	0.45
8:O:18:ASP:OD1	8:O:21:ASP:HB2	2.16	0.45
10:Q:47:HIS:CG	10:Q:67:LEU:HD23	2.52	0.45
12:T:50:ALA:O	12:T:53:GLU:HG2	2.15	0.45
1:A:18:C:P	3:E:132:ASN:HD21	2.39	0.45
1:A:20:U:H2'	1:A:21:G:O4'	2.16	0.45
1:A:123:U:H2'	1:A:124:C:C6	2.52	0.45
1:A:270:A:H2'	1:A:271:C:C6	2.52	0.45
12:T:42:GLY:HA2	12:T:86:LEU:HD11	1.98	0.45
14:W:126:ILE:CD1	14:W:128:ILE:CD1	2.94	0.45
14:W:313:ARG:O	14:W:316:VAL:HG12	2.15	0.45
1:A:1425:U:H2'	1:A:1426:G:H8	1.81	0.45
5:H:54:ASP:OD1	5:H:54:ASP:N	2.47	0.45
7:L:79:VAL:N	7:L:103:ASP:OD2	2.49	0.45
1:A:302:G:O2'	1:A:556:C:H5''	2.17	0.45
1:A:381:C:H2'	1:A:382:A:O4'	2.15	0.45

Continued on next page...

Continued from previous page...

Atom-1	Atom-2	Interatomic distance (Å)	Clash overlap (Å)
1:A:551:U:H2'	1:A:552:U:H6	1.81	0.45
11:R:47:THR:CG2	11:R:48:ARG:N	2.79	0.45
12:T:60:ARG:NH1	12:T:60:ARG:CB	2.79	0.45
1:A:689:C:C2	1:A:690:G:C8	3.04	0.45
3:E:35:ALA:HB1	3:E:60:ILE:HG22	1.98	0.45
4:F:88:MET:HB2	11:R:64:TYR:HE2	1.81	0.45
7:L:38:TYR:OH	7:L:64:THR:HG21	2.16	0.45
10:Q:46:VAL:HG21	10:Q:61:ILE:HG21	1.98	0.45
11:R:30:LYS:O	11:R:30:LYS:HG2	2.16	0.45
1:A:356:A:N3	1:A:368:U:O2'	2.35	0.45
1:A:864:A:H2'	1:A:865:A:C8	2.51	0.45
4:F:61:LEU:HD12	4:F:61:LEU:O	2.17	0.45
14:W:178:ASP:HA	14:W:181:ARG:HG2	1.98	0.45
1:A:312:C:H2'	1:A:313:A:H8	1.82	0.45
1:A:1479:C:H2'	1:A:1480:A:H8	1.81	0.45
3:E:11:LEU:HD11	3:E:71:MET:HE3	1.98	0.45
3:E:93:ARG:HG3	3:E:128:TYR:HB2	1.99	0.45
5:H:75:ILE:HG12	5:H:129:VAL:HG13	1.99	0.45
6:K:24:HIS:HB3	6:K:31:ILE:HB	1.98	0.45
10:Q:27:ARG:HE	10:Q:42:THR:CG2	2.30	0.45
14:W:105:SER:HB2	14:W:153:ILE:HD11	1.98	0.45
1:A:436:C:H2'	1:A:437:U:C6	2.52	0.45
2:D:86:THR:CG2	2:D:201:VAL:HG11	2.47	0.45
3:E:137:VAL:HA	3:E:140:THR:HG22	1.99	0.45
4:F:48:ALA:H	11:R:66:SER:HG	1.65	0.45
1:A:563:A:H2'	1:A:567:G:C8	2.52	0.45
1:A:607:A:H2'	1:A:608:A:C8	2.53	0.45
2:D:124:MET:HG3	2:D:146:ARG:HG2	1.97	0.45
5:H:6:PRO:HB2	5:H:33:LYS:HE3	1.99	0.45
6:K:97:ILE:CD1	13:U:16:LEU:CD1	2.94	0.45
7:L:123:LYS:HD3	7:L:123:LYS:HA	1.88	0.45
1:A:34:C:H2'	1:A:35:G:C8	2.52	0.44
1:A:203:G:H1'	1:A:465:A:H61	1.82	0.44
1:A:687:A:N3	1:A:688:G:H1'	2.32	0.44
1:A:925:G:C2	1:A:927:G:C8	3.05	0.44
2:D:188:ARG:NH2	2:D:193:ALA:HA	2.32	0.44
6:K:72:ASP:OD1	6:K:73:ALA:N	2.49	0.44
12:T:80:THR:HA	12:T:83:ILE:HG12	1.99	0.44
1:A:255:G:H2'	1:A:256:U:C6	2.51	0.44
1:A:563:A:H5'	1:A:564:C:OP1	2.16	0.44
1:A:696:A:H2'	1:A:697:U:H6	1.82	0.44

Continued on next page...

Continued from previous page...

Atom-1	Atom-2	Interatomic distance (Å)	Clash overlap (Å)
1:A:1518:MA6:H103	14:W:271:ARG:NH1	2.31	0.44
4:F:15:SER:HB2	4:F:44:ARG:HH21	1.82	0.44
4:F:66:ALA:HB3	4:F:71:ILE:CD1	2.47	0.44
8:O:7:ALA:O	8:O:11:ILE:HG12	2.17	0.44
14:W:108:THR:HA	14:W:118:PRO:HA	1.98	0.44
1:A:216:U:H1'	1:A:466:A:N6	2.32	0.44
1:A:555:U:H2'	1:A:556:C:C6	2.53	0.44
1:A:679:C:H2'	1:A:680:C:C6	2.51	0.44
1:A:859:G:OP2	1:A:869:G:N1	2.25	0.44
1:A:911:U:OP1	7:L:92:GLY:HA2	2.18	0.44
7:L:74:LEU:HD21	7:L:104:CYS:HB2	1.98	0.44
7:L:99:ARG:CD	7:L:104:CYS:SG	3.06	0.44
1:A:204:G:C8	1:A:465:A:N1	2.85	0.44
1:A:514:C:H2'	1:A:515:G:C8	2.45	0.44
1:A:590:U:H2'	1:A:591:U:C6	2.53	0.44
1:A:592:G:H2'	1:A:593:U:C6	2.52	0.44
1:A:746:A:H2'	1:A:747:A:H8	1.78	0.44
1:A:747:A:H2'	1:A:748:G:C8	2.52	0.44
1:A:821:G:H2'	1:A:822:U:C6	2.52	0.44
2:D:118:VAL:HG23	2:D:123:ILE:HD12	2.00	0.44
11:R:29:LEU:HA	11:R:32:TYR:HD1	1.81	0.44
1:A:110:C:H2'	1:A:111:G:O4'	2.17	0.44
1:A:160:A:H2'	1:A:161:A:O4'	2.18	0.44
1:A:584:G:H2'	1:A:585:G:H8	1.82	0.44
4:F:16:GLU:OE1	4:F:16:GLU:N	2.50	0.44
4:F:18:VAL:CG1	4:F:19:PRO:HD3	2.47	0.44
1:A:246:A:C2	1:A:282:A:C5	3.05	0.44
1:A:302:G:H2'	1:A:303:A:C8	2.53	0.44
1:A:334:C:H2'	1:A:335:C:C6	2.53	0.44
1:A:1409:C:HO2'	14:W:51:HIS:CD2	2.35	0.44
3:E:115:LEU:HD22	3:E:120:VAL:HG11	2.00	0.44
7:L:114:ARG:HB3	7:L:119:VAL:HB	2.00	0.44
1:A:390:U:H2'	1:A:391:G:H8	1.82	0.44
6:K:126:LYS:NZ	13:U:37:PHE:HB2	2.33	0.44
7:L:99:ARG:HD2	7:L:104:CYS:SG	2.57	0.44
8:O:12:VAL:HG23	8:O:27:VAL:HG11	2.00	0.44
1:A:218:U:H2'	1:A:219:U:C6	2.52	0.44
1:A:643:C:H2'	1:A:644:U:H6	1.83	0.44
1:A:751:U:H2'	1:A:752:G:O4'	2.17	0.44
1:A:912:C:H2'	1:A:913:A:C8	2.53	0.44
7:L:35:THR:HG22	7:L:54:ARG:O	2.17	0.44

Continued on next page...

Continued from previous page...

Atom-1	Atom-2	Interatomic distance (Å)	Clash overlap (Å)
1:A:444:G:H2'	1:A:445:G:C8	2.53	0.44
13:U:4:ILE:HD13	13:U:4:ILE:HA	1.88	0.44
14:W:171:ALA:HA	14:W:174:ASN:ND2	2.32	0.44
1:A:124:C:H2'	1:A:125:U:C6	2.53	0.43
1:A:217:C:H2'	1:A:218:U:H6	1.83	0.43
1:A:513:C:H2'	1:A:514:C:C6	2.52	0.43
1:A:537:G:H2'	1:A:538:G:C8	2.52	0.43
1:A:559:A:H4'	1:A:560:A:H3'	2.00	0.43
1:A:598:U:H2'	1:A:599:C:H6	1.83	0.43
3:E:14:LYS:NZ	3:E:117:VAL:HG23	2.33	0.43
14:W:249:THR:OG1	14:W:250:THR:N	2.51	0.43
1:A:496:A:H5'	1:A:497:G:OP2	2.18	0.43
1:A:675:A:H1'	6:K:118:HIS:CD2	2.53	0.43
1:A:908:A:H2'	1:A:909:A:C8	2.53	0.43
2:D:94:LEU:HD23	2:D:94:LEU:HA	1.85	0.43
13:U:43:THR:HA	13:U:46:LYS:HG2	2.00	0.43
1:A:161:A:H2'	1:A:162:A:C8	2.53	0.43
1:A:197:A:N1	1:A:220:G:O2'	2.46	0.43
1:A:644:U:C2	1:A:645:G:C8	3.07	0.43
1:A:1404:C:H2'	1:A:1405:G:H8	1.82	0.43
1:A:1436:U:H2'	1:A:1437:A:C8	2.54	0.43
3:E:54:ARG:O	3:E:55:GLU:CG	2.66	0.43
5:H:29:SER:HB3	5:H:59:LEU:HB2	2.00	0.43
1:A:690:G:H2'	1:A:691:G:C8	2.53	0.43
13:U:21:ARG:HA	13:U:24:GLU:CD	2.38	0.43
1:A:212:G:C4	1:A:213:G:C8	3.07	0.43
1:A:338:A:H2'	1:A:339:C:H6	1.82	0.43
1:A:405:U:H3'	1:A:406:G:H5'	2.00	0.43
1:A:662:U:H2'	1:A:663:A:H8	1.82	0.43
1:A:859:G:H2'	1:A:860:A:C8	2.53	0.43
1:A:62:U:H5'	1:A:385:C:H1'	2.00	0.43
1:A:154:U:H2'	1:A:155:A:C8	2.54	0.43
7:L:40:THR:HG22	7:L:50:ARG:HB2	2.01	0.43
10:Q:47:HIS:HB3	10:Q:67:LEU:HD22	2.00	0.43
1:A:371:A:H2'	1:A:372:C:O4'	2.19	0.43
2:D:83:LYS:HA	2:D:83:LYS:HD3	1.79	0.43
1:A:673:A:O2'	1:A:674:G:H5'	2.19	0.43
1:A:1477:U:H2'	1:A:1478:U:H6	1.84	0.43
4:F:88:MET:HE1	11:R:61:ARG:HD3	2.00	0.43
6:K:88:GLY:H	6:K:114:THR:HG22	1.84	0.43
1:A:110:C:O2'	9:P:25:ARG:O	2.33	0.42

Continued on next page...

Continued from previous page...

Atom-1	Atom-2	Interatomic distance (Å)	Clash overlap (Å)
1:A:649:A:H2'	1:A:650:G:O4'	2.19	0.42
1:A:763:G:H2'	1:A:764:C:H6	1.82	0.42
1:A:824:G:H2'	1:A:825:A:C8	2.46	0.42
13:U:46:LYS:O	13:U:49:LYS:CG	2.67	0.42
14:W:175:GLU:OE1	14:W:175:GLU:N	2.49	0.42
1:A:582:C:C2	1:A:583:A:C8	3.08	0.42
1:A:612:C:H2'	1:A:613:C:H6	1.84	0.42
1:A:1422:G:C2	1:A:1479:C:C2	3.07	0.42
1:A:1425:U:H3	1:A:1475:G:H1	1.66	0.42
3:E:45:ARG:HG2	3:E:71:MET:CE	2.49	0.42
5:H:12:THR:HG22	5:H:15:ARG:HH12	1.83	0.42
5:H:126:ILE:C	5:H:127:CYS:SG	2.95	0.42
6:K:34:ILE:HG12	6:K:70:CYS:SG	2.60	0.42
6:K:100:LEU:HD12	6:K:100:LEU:HA	1.88	0.42
14:W:72:SER:HB2	14:W:103:ARG:HH22	1.85	0.42
1:A:95:C:H2'	1:A:96:U:C6	2.54	0.42
1:A:207:C:H2'	1:A:208:U:O4'	2.19	0.42
1:A:612:C:H2'	1:A:613:C:C6	2.54	0.42
3:E:94:VAL:HG23	3:E:111:MET:SD	2.59	0.42
6:K:84:VAL:HG13	6:K:110:ILE:HG23	2.01	0.42
1:A:663:A:H5'	1:A:836:G:OP1	2.19	0.42
1:A:878:A:H2'	1:A:879:C:C6	2.54	0.42
1:A:1490:U:C2	1:A:1491:G:C8	3.07	0.42
2:D:155:VAL:HG13	2:D:156:LYS:N	2.35	0.42
3:E:45:ARG:HG2	3:E:71:MET:HB3	2.01	0.42
3:E:133:PRO:O	3:E:137:VAL:HG13	2.19	0.42
1:A:119:A:H4'	1:A:120:A:C4	2.55	0.42
1:A:476:U:H2'	1:A:477:C:C6	2.55	0.42
1:A:579:A:H5'	1:A:728:A:H1'	2.01	0.42
4:F:29:ILE:HD13	4:F:70:VAL:HG12	2.01	0.42
5:H:74:SER:O	5:H:75:ILE:CG1	2.67	0.42
10:Q:5:ILE:O	10:Q:7:THR:OG1	2.35	0.42
13:U:25:LYS:HD3	13:U:25:LYS:HA	1.74	0.42
1:A:33:A:H2'	1:A:34:C:C6	2.54	0.42
1:A:123:U:C2	1:A:124:C:C5	3.08	0.42
1:A:416:G:H2'	1:A:417:G:H8	1.83	0.42
1:A:554:A:H2'	1:A:555:U:C6	2.54	0.42
1:A:790:A:C2	14:W:271:ARG:HB3	2.54	0.42
1:A:1434:A:H2'	1:A:1435:G:O4'	2.20	0.42
10:Q:38:ILE:HD11	10:Q:40:ARG:NE	2.35	0.42
11:R:68:LEU:HD23	11:R:68:LEU:HA	1.89	0.42

Continued on next page...

Continued from previous page...

Atom-1	Atom-2	Interatomic distance (Å)	Clash overlap (Å)
14:W:310:CYS:HB3	14:W:313:ARG:NH1	2.35	0.42
1:A:201:G:H2'	1:A:202:G:H8	1.84	0.42
1:A:464:U:H3	1:A:467:U:P	2.42	0.42
1:A:538:G:H2'	1:A:539:A:C8	2.55	0.42
1:A:745:G:C2	1:A:746:A:C5	3.08	0.42
1:A:902:G:H2'	1:A:903:G:H8	1.84	0.42
1:A:1412:C:H2'	1:A:1413:A:H8	1.84	0.42
4:F:61:LEU:HD12	4:F:61:LEU:C	2.40	0.42
5:H:55:THR:HG23	5:H:56:LYS:N	2.35	0.42
6:K:126:LYS:HZ3	13:U:37:PHE:HD2	1.68	0.42
8:O:25:THR:O	8:O:25:THR:CG2	2.65	0.42
1:A:71:A:C6	1:A:72:A:C8	3.08	0.42
1:A:738:C:H2'	1:A:739:C:H6	1.85	0.42
1:A:1436:U:H2'	1:A:1437:A:H8	1.85	0.42
2:D:151:LYS:HB2	2:D:151:LYS:HE2	1.78	0.42
6:K:63:ALA:HB1	6:K:96:THR:HG22	2.01	0.42
1:A:575:G:O2'	1:A:821:G:H5'	2.20	0.42
1:A:600:A:H2'	1:A:601:G:H8	1.84	0.42
1:A:1493:A:C2	14:W:68:ARG:HD2	2.55	0.42
3:E:159:LYS:HE2	5:H:43:GLU:C	2.40	0.42
6:K:35:THR:OG1	6:K:36:ASP:OD1	2.38	0.42
9:P:6:LEU:HD22	9:P:17:TYR:HB3	2.01	0.42
10:Q:18:GLU:H	10:Q:18:GLU:HG2	1.66	0.42
14:W:98:GLU:OE1	14:W:98:GLU:N	2.53	0.42
14:W:141:ILE:O	14:W:145:LEU:HG	2.20	0.42
14:W:297:CYS:HA	14:W:309:GLY:O	2.20	0.42
1:A:464:U:O2'	1:A:466:A:N7	2.37	0.42
1:A:1401:G:H2'	1:A:1402:4OC:O4'	2.20	0.42
1:A:1495:U:H2'	1:A:1496:C:C6	2.54	0.42
1:A:1518:MA6:H93	1:A:1519:MA6:H92	2.01	0.42
3:E:58:ALA:O	3:E:62:LYS:HG2	2.20	0.42
10:Q:65:ARG:O	10:Q:67:LEU:HD12	2.19	0.42
13:U:28:VAL:O	13:U:32:VAL:HG13	2.20	0.42
1:A:113:G:H2'	1:A:114:U:C6	2.54	0.41
1:A:674:G:H21	6:K:118:HIS:HB2	1.83	0.41
1:A:1418:A:H3'	1:A:1419:G:H8	1.85	0.41
1:A:1427:C:N4	1:A:1428:A:H62	2.18	0.41
10:Q:46:VAL:HG22	10:Q:73:TRP:HB2	2.02	0.41
14:W:220:LYS:HZ1	17:W:402:GNP:HNB3	1.68	0.41
1:A:590:U:H2'	1:A:591:U:H6	1.85	0.41
1:A:601:G:H2'	1:A:602:A:C8	2.55	0.41

Continued on next page...

Continued from previous page...

Atom-1	Atom-2	Interatomic distance (Å)	Clash overlap (Å)
1:A:694:A:C2	1:A:695:A:H1'	2.55	0.41
1:A:923:A:H2'	1:A:924:C:H6	1.84	0.41
1:A:1489:G:H2'	1:A:1490:U:C6	2.55	0.41
1:A:1489:G:H2'	1:A:1490:U:H6	1.85	0.41
7:L:44:LYS:N	7:L:45:PRO:HD2	2.35	0.41
10:Q:16:LYS:HB3	10:Q:16:LYS:HE2	1.82	0.41
14:W:112:PHE:CE2	14:W:342:ARG:HD2	2.54	0.41
1:A:148:G:N3	1:A:1446:A:H2	2.18	0.41
1:A:272:C:H2'	1:A:273:U:C6	2.55	0.41
1:A:517:G:N3	1:A:530:G:H5''	2.34	0.41
1:A:580:C:H2'	1:A:581:G:O4'	2.21	0.41
1:A:737:C:H2'	1:A:738:C:C6	2.54	0.41
1:A:1517:G:O4'	14:W:247:GLN:HG3	2.21	0.41
2:D:48:LEU:HD12	2:D:48:LEU:C	2.40	0.41
2:D:72:PHE:HE1	2:D:94:LEU:HD11	1.85	0.41
6:K:84:VAL:HG21	6:K:97:ILE:CG2	2.49	0.41
8:O:71:LYS:HG3	8:O:78:TYR:CD2	2.55	0.41
8:O:74:ASP:OD1	8:O:74:ASP:N	2.52	0.41
14:W:291:HIS:HA	14:W:294:LEU:HD23	2.02	0.41
1:A:620:C:H2'	1:A:621:A:C8	2.56	0.41
1:A:709:U:H2'	1:A:710:G:H8	1.85	0.41
1:A:1481:U:C2	1:A:1482:G:C8	3.09	0.41
2:D:4:TYR:CE2	2:D:11:LEU:HD11	2.56	0.41
2:D:170:TRP:CD2	2:D:186:PRO:HB3	2.55	0.41
2:D:170:TRP:HB2	2:D:184:ARG:O	2.21	0.41
3:E:164:ILE:O	3:E:164:ILE:CG2	2.67	0.41
14:W:161:LYS:HG2	17:W:402:GNP:C6	2.50	0.41
1:A:515:G:H2'	1:A:516:PSU:O4'	2.21	0.41
2:D:194:ASP:OD1	2:D:194:ASP:N	2.53	0.41
3:E:25:VAL:HG12	3:E:26:LYS:N	2.34	0.41
6:K:16:VAL:HG12	6:K:18:ASP:O	2.20	0.41
7:L:110:ARG:HB3	7:L:119:VAL:HG21	2.03	0.41
14:W:55:GLU:OE1	14:W:257:HIS:NE2	2.54	0.41
1:A:642:A:C8	5:H:107:SER:HA	2.55	0.41
1:A:1435:G:H2'	1:A:1436:U:C6	2.55	0.41
3:E:29:ARG:H	3:E:29:ARG:HG2	1.62	0.41
3:E:153:VAL:HG13	3:E:156:LYS:HZ3	1.85	0.41
4:F:20:GLY:O	4:F:23:GLU:HG3	2.21	0.41
10:Q:57:ASP:HA	10:Q:80:GLU:O	2.20	0.41
13:U:18:ARG:HA	13:U:21:ARG:HG2	2.03	0.41
1:A:477:C:H2'	1:A:478:A:C8	2.55	0.41

Continued on next page...

Continued from previous page...

Atom-1	Atom-2	Interatomic distance (Å)	Clash overlap (Å)
1:A:579:A:H2'	1:A:580:C:H6	1.86	0.41
1:A:636:U:H2'	1:A:637:C:H6	1.86	0.41
1:A:1419:G:H1	1:A:1481:U:H3	1.68	0.41
13:U:49:LYS:HG3	13:U:50:ALA:N	2.36	0.41
1:A:19:A:H2'	1:A:20:U:C6	2.56	0.41
1:A:188:C:H2'	1:A:189:A:O4'	2.21	0.41
1:A:494:G:O2'	1:A:496:A:H1'	2.20	0.41
1:A:621:A:H2'	1:A:622:A:C8	2.56	0.41
1:A:674:G:H2'	1:A:675:A:H8	1.86	0.41
1:A:820:U:H4'	1:A:821:G:OP2	2.21	0.41
1:A:904:U:H2'	1:A:905:U:C6	2.55	0.41
2:D:121:LYS:O	2:D:146:ARG:HD3	2.21	0.41
2:D:153:SER:HA	2:D:156:LYS:HE2	2.02	0.41
3:E:14:LYS:HZ1	3:E:117:VAL:HG23	1.86	0.41
7:L:30:LYS:HA	7:L:30:LYS:HD2	1.93	0.41
7:L:108:LYS:HB2	7:L:108:LYS:HE2	1.79	0.41
11:R:40:VAL:CG1	11:R:44:ILE:HD11	2.51	0.41
1:A:399:G:H2'	1:A:400:C:H6	1.86	0.41
1:A:444:G:H2'	1:A:445:G:H8	1.84	0.41
1:A:500:G:H2'	1:A:501:C:H6	1.85	0.41
1:A:538:G:H5''	7:L:111:LYS:HB2	2.03	0.41
1:A:830:G:H2'	1:A:831:A:C8	2.56	0.41
1:A:880:C:OP1	7:L:5:ASN:ND2	2.50	0.41
1:A:881:G:H2'	1:A:882:C:O4'	2.21	0.41
1:A:1438:G:H1	1:A:1463:U:H3	1.69	0.41
2:D:60:LYS:HE3	2:D:195:ILE:HG12	2.03	0.41
2:D:196:ASN:O	2:D:199:LEU:HG	2.21	0.41
4:F:29:ILE:CD1	4:F:70:VAL:HG12	2.51	0.41
8:O:85:LEU:HD23	8:O:85:LEU:HA	1.93	0.41
1:A:208:U:H2'	1:A:210:C:C2	2.56	0.41
1:A:601:G:H2'	1:A:602:A:H8	1.84	0.41
1:A:1464:U:H2'	1:A:1465:A:C8	2.55	0.41
1:A:1479:C:H2'	1:A:1480:A:C8	2.56	0.41
5:H:83:LEU:HD13	7:L:4:VAL:HG21	2.03	0.41
7:L:4:VAL:HG13	10:Q:34:TYR:HB3	2.02	0.41
8:O:78:TYR:O	8:O:82:ILE:HG23	2.21	0.41
14:W:85:LYS:HA	14:W:86:PRO:HD3	1.96	0.41
14:W:328:ASN:HA	14:W:331:ARG:HG2	2.02	0.41
1:A:147:G:H2'	1:A:148:G:H8	1.82	0.40
1:A:522:C:H41	7:L:50:ARG:NH2	2.16	0.40
1:A:598:U:H2'	1:A:599:C:C6	2.56	0.40

Continued on next page...

Continued from previous page...

Atom-1	Atom-2	Interatomic distance (Å)	Clash overlap (Å)
1:A:704:A:H3'	1:A:705:G:H8	1.86	0.40
1:A:883:C:O2'	1:A:884:U:H5'	2.21	0.40
1:A:1413:A:H2	1:A:1487:G:H22	1.69	0.40
2:D:48:LEU:CD1	2:D:53:VAL:N	2.80	0.40
7:L:87:VAL:HB	7:L:90:LEU:HB2	2.03	0.40
10:Q:10:GLY:HA3	10:Q:25:ILE:HD13	2.02	0.40
14:W:36:PHE:HA	14:W:84:GLY:HA2	2.03	0.40
14:W:123:ILE:HG12	14:W:211:ILE:HG22	2.03	0.40
1:A:82:G:N7	1:A:83:C:H1'	2.36	0.40
1:A:519:C:OP1	14:W:69:THR:HG23	2.21	0.40
1:A:838:G:H2'	1:A:839:C:C6	2.56	0.40
5:H:29:SER:OG	5:H:57:PRO:HB2	2.20	0.40
5:H:92:LEU:HD23	5:H:92:LEU:HA	1.93	0.40
14:W:137:SER:C	14:W:139:ASN:N	2.74	0.40
1:A:49:U:O2	1:A:362:G:H1'	2.21	0.40
1:A:124:C:H2'	1:A:125:U:H6	1.85	0.40
1:A:676:A:H2'	1:A:677:U:H6	1.86	0.40
2:D:188:ARG:HA	2:D:188:ARG:HD2	1.86	0.40
6:K:94:GLU:HG2	6:K:98:ARG:HH12	1.85	0.40
7:L:43:LYS:HE3	7:L:89:D2T:H4	2.03	0.40
14:W:112:PHE:CD2	14:W:342:ARG:HD2	2.57	0.40
14:W:333:LEU:HD23	14:W:333:LEU:HA	1.89	0.40
1:A:120:A:C4	1:A:122:G:C5	3.09	0.40
1:A:642:A:C5	1:A:643:C:C5	3.10	0.40
2:D:58:LYS:HB3	2:D:58:LYS:HE3	1.87	0.40
2:D:196:ASN:HB3	2:D:198:HIS:CD2	2.56	0.40
3:E:132:ASN:O	3:E:136:VAL:HG23	2.21	0.40
6:K:14:LYS:HE3	6:K:14:LYS:HB3	1.68	0.40
1:A:25:C:H2'	1:A:26:A:H8	1.87	0.40
1:A:268:U:C2	1:A:269:C:C5	3.10	0.40
1:A:302:G:H2'	1:A:303:A:H8	1.86	0.40
1:A:324:G:N2	1:A:327:A:H5'	2.25	0.40
1:A:444:G:C6	1:A:491:G:C6	3.10	0.40
1:A:635:A:H2'	1:A:636:U:H6	1.86	0.40
1:A:676:A:H1'	6:K:117:PRO:HB3	2.04	0.40
1:A:838:G:C6	1:A:849:G:C6	3.09	0.40
1:A:1465:A:H2'	1:A:1466:C:H6	1.85	0.40
5:H:106:THR:OG1	5:H:121:LEU:HB3	2.22	0.40
13:U:50:ALA:HA	13:U:53:VAL:HG12	2.04	0.40
14:W:51:HIS:HA	14:W:66:ILE:HD12	2.03	0.40
14:W:103:ARG:CD	14:W:121:ALA:HB2	2.51	0.40

There are no symmetry-related clashes.

5.3 Torsion angles [i](#)

5.3.1 Protein backbone [i](#)

In the following table, the Percentiles column shows the percent Ramachandran outliers of the chain as a percentile score with respect to all PDB entries followed by that with respect to all EM entries.

The Analysed column shows the number of residues for which the backbone conformation was analysed, and the total number of residues.

Mol	Chain	Analysed	Favoured	Allowed	Outliers	Percentiles	
2	D	203/206 (98%)	197 (97%)	6 (3%)	0	100	100
3	E	154/167 (92%)	153 (99%)	1 (1%)	0	100	100
4	F	104/135 (77%)	98 (94%)	6 (6%)	0	100	100
5	H	127/130 (98%)	124 (98%)	3 (2%)	0	100	100
6	K	115/129 (89%)	111 (96%)	4 (4%)	0	100	100
7	L	120/124 (97%)	110 (92%)	10 (8%)	0	100	100
8	O	86/89 (97%)	85 (99%)	1 (1%)	0	100	100
9	P	80/82 (98%)	79 (99%)	1 (1%)	0	100	100
10	Q	78/84 (93%)	72 (92%)	6 (8%)	0	100	100
11	R	63/75 (84%)	62 (98%)	1 (2%)	0	100	100
12	T	84/87 (97%)	84 (100%)	0	0	100	100
13	U	64/71 (90%)	64 (100%)	0	0	100	100
14	W	312/350 (89%)	294 (94%)	18 (6%)	0	100	100
All	All	1590/1729 (92%)	1533 (96%)	57 (4%)	0	100	100

There are no Ramachandran outliers to report.

5.3.2 Protein sidechains [i](#)

In the following table, the Percentiles column shows the percent sidechain outliers of the chain as a percentile score with respect to all PDB entries followed by that with respect to all EM entries.

The Analysed column shows the number of residues for which the sidechain conformation was analysed, and the total number of residues.

Mol	Chain	Analysed	Rotameric	Outliers	Percentiles	
2	D	172/173 (99%)	171 (99%)	1 (1%)	86	94
3	E	119/126 (94%)	117 (98%)	2 (2%)	60	84
4	F	92/116 (79%)	92 (100%)	0	100	100
5	H	104/105 (99%)	101 (97%)	3 (3%)	42	74
6	K	90/99 (91%)	89 (99%)	1 (1%)	73	90
7	L	102/103 (99%)	102 (100%)	0	100	100
8	O	76/77 (99%)	74 (97%)	2 (3%)	46	76
9	P	65/65 (100%)	65 (100%)	0	100	100
10	Q	74/78 (95%)	74 (100%)	0	100	100
11	R	56/65 (86%)	56 (100%)	0	100	100
12	T	65/66 (98%)	65 (100%)	0	100	100
13	U	56/61 (92%)	56 (100%)	0	100	100
14	W	268/302 (89%)	265 (99%)	3 (1%)	73	90
All	All	1339/1436 (93%)	1327 (99%)	12 (1%)	79	91

All (12) residues with a non-rotameric sidechain are listed below:

Mol	Chain	Res	Type
2	D	204	TYR
3	E	22	SER
3	E	70	ASN
5	H	74	SER
5	H	89	LYS
5	H	105	SER
6	K	26	SER
8	O	2	SER
8	O	24	SER
14	W	235	LEU
14	W	310	CYS
14	W	345	PHE

Sometimes sidechains can be flipped to improve hydrogen bonding and reduce clashes. All (10) such sidechains are listed below:

Mol	Chain	Res	Type
2	D	85	ASN
3	E	78	ASN
4	F	55	HIS

Continued on next page...

Continued from previous page...

Mol	Chain	Res	Type
4	F	63	ASN
5	H	76	GLN
6	K	119	ASN
11	R	31	ASN
12	T	52	ASN
14	W	237	ASN
14	W	338	GLN

5.3.3 RNA [i](#)

Mol	Chain	Analysed	Backbone Outliers	Pucker Outliers
1	A	1073/1542 (69%)	164 (15%)	5 (0%)

All (164) RNA backbone outliers are listed below:

Mol	Chain	Res	Type
1	A	4	U
1	A	5	U
1	A	6	G
1	A	9	G
1	A	22	G
1	A	32	A
1	A	39	G
1	A	47	C
1	A	48	C
1	A	50	A
1	A	51	A
1	A	62	U
1	A	70	U
1	A	72	A
1	A	73	C
1	A	74	A
1	A	76	G
1	A	78	A
1	A	79	G
1	A	80	A
1	A	81	A
1	A	83	C
1	A	84	U
1	A	85	U
1	A	86	G

Continued on next page...

Continued from previous page...

Mol	Chain	Res	Type
1	A	90	C
1	A	91	U
1	A	92	U
1	A	93	U
1	A	94	G
1	A	95	C
1	A	109	A
1	A	120	A
1	A	121	U
1	A	130	A
1	A	131	A
1	A	143	A
1	A	144	G
1	A	149	A
1	A	158	G
1	A	177	G
1	A	181	A
1	A	182	A
1	A	189	A
1	A	196	A
1	A	197	A
1	A	201	G
1	A	205	A
1	A	209	U
1	A	210	C
1	A	211	G
1	A	212	G
1	A	226	G
1	A	240	G
1	A	243	A
1	A	246	A
1	A	247	G
1	A	251	G
1	A	266	G
1	A	267	C
1	A	280	C
1	A	289	G
1	A	299	G
1	A	306	A
1	A	328	C
1	A	332	G
1	A	344	A

Continued on next page...

Continued from previous page...

Mol	Chain	Res	Type
1	A	345	C
1	A	347	G
1	A	352	C
1	A	354	G
1	A	367	U
1	A	372	C
1	A	406	G
1	A	412	A
1	A	413	G
1	A	421	U
1	A	422	C
1	A	423	G
1	A	424	G
1	A	429	U
1	A	439	U
1	A	467	U
1	A	472	U
1	A	473	U
1	A	479	U
1	A	481	G
1	A	484	G
1	A	486	U
1	A	495	A
1	A	496	A
1	A	497	G
1	A	511	C
1	A	512	U
1	A	518	C
1	A	521	G
1	A	527	G7M
1	A	528	C
1	A	530	G
1	A	547	A
1	A	559	A
1	A	562	U
1	A	564	C
1	A	572	A
1	A	573	A
1	A	576	C
1	A	577	G
1	A	596	A
1	A	633	G

Continued on next page...

Continued from previous page...

Mol	Chain	Res	Type
1	A	650	G
1	A	653	U
1	A	665	A
1	A	674	G
1	A	686	U
1	A	687	A
1	A	701	U
1	A	702	A
1	A	703	G
1	A	718	A
1	A	719	C
1	A	721	G
1	A	724	G
1	A	734	G
1	A	755	G
1	A	794	A
1	A	815	A
1	A	817	C
1	A	821	G
1	A	828	U
1	A	832	G
1	A	841	C
1	A	849	G
1	A	872	A
1	A	876	C
1	A	901	A
1	A	902	G
1	A	914	A
1	A	926	G
1	A	1398	A
1	A	1399	C
1	A	1401	G
1	A	1421	G
1	A	1432	G
1	A	1441	A
1	A	1442	G
1	A	1446	A
1	A	1453	G
1	A	1473	G
1	A	1474	U
1	A	1485	U
1	A	1486	G

Continued on next page...

Continued from previous page...

Mol	Chain	Res	Type
1	A	1493	A
1	A	1497	G
1	A	1498	UR3
1	A	1499	A
1	A	1503	A
1	A	1504	G
1	A	1506	U
1	A	1507	A
1	A	1517	G
1	A	1529	G
1	A	1530	G
1	A	1531	A
1	A	1534	A

All (5) RNA pucker outliers are listed below:

Mol	Chain	Res	Type
1	A	86	G
1	A	183	C
1	A	298	A
1	A	428	G
1	A	471	U

5.4 Non-standard residues in protein, DNA, RNA chains [i](#)

9 non-standard protein/DNA/RNA residues are modelled in this entry.

In the following table, the Counts columns list the number of bonds (or angles) for which Mogul statistics could be retrieved, the number of bonds (or angles) that are observed in the model and the number of bonds (or angles) that are defined in the Chemical Component Dictionary. The Link column lists molecule types, if any, to which the group is linked. The Z score for a bond length (or angle) is the number of standard deviations the observed value is removed from the expected value. A bond length (or angle) with $|Z| > 2$ is considered an outlier worth inspection. RMSZ is the root-mean-square of all Z scores of the bond lengths (or angles).

Mol	Type	Chain	Res	Link	Bond lengths			Bond angles		
					Counts	RMSZ	# Z > 2	Counts	RMSZ	# Z > 2
1	G7M	A	527	1	20,26,27	0.95	1 (5%)	17,39,42	1.64	5 (29%)
7	D2T	L	89	7	7,9,10	1.04	1 (14%)	6,11,13	1.81	3 (50%)
1	MA6	A	1519	1	19,26,27	0.94	1 (5%)	18,38,41	1.70	5 (27%)
1	UR3	A	1498	15,1	19,22,23	1.03	1 (5%)	26,32,35	1.53	2 (7%)
1	PSU	A	516	15,1	18,21,22	1.39	5 (27%)	22,30,33	1.85	4 (18%)

Mol	Type	Chain	Res	Link	Bond lengths			Bond angles		
					Counts	RMSZ	# Z > 2	Counts	RMSZ	# Z > 2
1	2MG	A	1516	1	18,26,27	0.94	1 (5%)	16,38,41	1.15	2 (12%)
1	5MC	A	1407	1	18,22,23	0.95	2 (11%)	26,32,35	1.22	3 (11%)
1	MA6	A	1518	1	19,26,27	0.93	1 (5%)	18,38,41	1.71	5 (27%)
1	4OC	A	1402	1	20,23,24	0.78	0	26,32,35	0.94	1 (3%)

In the following table, the Chirals column lists the number of chiral outliers, the number of chiral centers analysed, the number of these observed in the model and the number defined in the Chemical Component Dictionary. Similar counts are reported in the Torsion and Rings columns. '-' means no outliers of that kind were identified.

Mol	Type	Chain	Res	Link	Chirals	Torsions	Rings
1	G7M	A	527	1	-	2/3/25/26	0/3/3/3
7	D2T	L	89	7	-	2/7/12/14	-
1	MA6	A	1519	1	-	2/7/29/30	0/3/3/3
1	UR3	A	1498	15,1	-	1/7/25/26	0/2/2/2
1	PSU	A	516	15,1	-	0/7/25/26	0/2/2/2
1	2MG	A	1516	1	-	0/5/27/28	0/3/3/3
1	5MC	A	1407	1	-	0/7/25/26	0/2/2/2
1	MA6	A	1518	1	-	3/7/29/30	0/3/3/3
1	4OC	A	1402	1	-	0/9/29/30	0/2/2/2

All (13) bond length outliers are listed below:

Mol	Chain	Res	Type	Atoms	Z	Observed(Å)	Ideal(Å)
1	A	527	G7M	C8-N9	2.89	1.38	1.33
1	A	516	PSU	C4-N3	-2.78	1.33	1.38
1	A	1516	2MG	C6-N1	-2.74	1.33	1.37
7	L	89	D2T	O-C	2.67	1.30	1.19
1	A	1407	5MC	C6-N1	-2.62	1.33	1.38
1	A	516	PSU	C6-C5	2.55	1.38	1.35
1	A	1407	5MC	C6-C5	2.39	1.38	1.34
1	A	1519	MA6	C5-C4	2.29	1.47	1.40
1	A	1518	MA6	C5-C4	2.22	1.46	1.40
1	A	1498	UR3	C2-N1	2.15	1.41	1.38
1	A	516	PSU	C2-N1	-2.13	1.33	1.36
1	A	516	PSU	O4'-C1'	-2.08	1.41	1.43
1	A	516	PSU	C2-N3	-2.03	1.34	1.37

All (30) bond angle outliers are listed below:

Mol	Chain	Res	Type	Atoms	Z	Observed(°)	Ideal(°)
1	A	516	PSU	N1-C2-N3	5.67	121.55	115.13
1	A	1498	UR3	C4-N3-C2	-5.56	119.33	124.56
1	A	1407	5MC	C5-C6-N1	-3.96	119.27	123.34
1	A	516	PSU	C4-N3-C2	-3.70	121.01	126.34
1	A	527	G7M	C3'-C2'-C1'	-3.47	95.75	100.98
1	A	1518	MA6	C9-N6-C6	-3.45	109.07	119.51
1	A	516	PSU	O2-C2-N1	-3.45	119.00	122.79
1	A	1519	MA6	N3-C2-N1	-3.26	123.58	128.68
1	A	1519	MA6	C9-N6-C6	-3.24	109.70	119.51
1	A	1519	MA6	N1-C6-N6	3.19	120.42	117.06
1	A	1518	MA6	N1-C6-N6	3.19	120.41	117.06
1	A	1518	MA6	N3-C2-N1	-3.08	123.86	128.68
1	A	1518	MA6	C4-C5-N7	-2.86	106.42	109.40
1	A	1519	MA6	C4-C5-N7	-2.83	106.45	109.40
7	L	89	D2T	O-C-CA	-2.75	117.57	124.78
1	A	527	G7M	O4'-C1'-C2'	-2.71	102.97	106.93
1	A	1518	MA6	C10-N6-C6	-2.62	111.59	119.51
1	A	1407	5MC	C5-C4-N3	-2.47	119.01	121.67
1	A	1516	2MG	C5-C6-N1	2.37	118.14	113.95
1	A	1498	UR3	C1'-N1-C2	2.37	120.99	116.99
1	A	1519	MA6	C10-N6-C6	-2.37	112.35	119.51
7	L	89	D2T	OD1-CG-CB	2.32	127.31	122.44
1	A	1516	2MG	C8-N7-C5	2.31	107.39	102.99
1	A	527	G7M	O3'-C3'-C4'	2.29	117.66	111.05
1	A	1402	4OC	C6-C5-C4	2.25	119.71	116.96
1	A	527	G7M	O4'-C4'-C3'	-2.24	100.68	105.11
1	A	1407	5MC	O2-C2-N3	-2.24	118.69	122.33
1	A	516	PSU	O4'-C1'-C2'	2.20	108.24	105.14
7	L	89	D2T	OD2-CG-CB	-2.07	108.68	113.15
1	A	527	G7M	C2'-C3'-C4'	-2.07	98.63	102.64

There are no chirality outliers.

All (10) torsion outliers are listed below:

Mol	Chain	Res	Type	Atoms
1	A	527	G7M	C3'-C4'-C5'-O5'
1	A	1518	MA6	O4'-C4'-C5'-O5'
1	A	1518	MA6	C3'-C4'-C5'-O5'
1	A	527	G7M	O4'-C4'-C5'-O5'
1	A	1519	MA6	C5-C6-N6-C10
7	L	89	D2T	CG-CB-SB-CB1
1	A	1498	UR3	C3'-C4'-C5'-O5'
7	L	89	D2T	SB-CB-CG-OD1

Continued on next page...

Continued from previous page...

Mol	Chain	Res	Type	Atoms
1	A	1519	MA6	C4'-C5'-O5'-P
1	A	1518	MA6	C5-C6-N6-C10

There are no ring outliers.

5 monomers are involved in 9 short contacts:

Mol	Chain	Res	Type	Clashes	Symm-Clashes
7	L	89	D2T	1	0
1	A	1519	MA6	2	0
1	A	516	PSU	1	0
1	A	1518	MA6	5	0
1	A	1402	4OC	2	0

5.5 Carbohydrates [i](#)

There are no monosaccharides in this entry.

5.6 Ligand geometry [i](#)

Of 74 ligands modelled in this entry, 73 are monoatomic - leaving 1 for Mogul analysis.

In the following table, the Counts columns list the number of bonds (or angles) for which Mogul statistics could be retrieved, the number of bonds (or angles) that are observed in the model and the number of bonds (or angles) that are defined in the Chemical Component Dictionary. The Link column lists molecule types, if any, to which the group is linked. The Z score for a bond length (or angle) is the number of standard deviations the observed value is removed from the expected value. A bond length (or angle) with $|Z| > 2$ is considered an outlier worth inspection. RMSZ is the root-mean-square of all Z scores of the bond lengths (or angles).

Mol	Type	Chain	Res	Link	Bond lengths			Bond angles		
					Counts	RMSZ	# $ Z > 2$	Counts	RMSZ	# $ Z > 2$
17	GNP	W	402	15	29,34,34	1.36	6 (20%)	33,54,54	2.29	6 (18%)

In the following table, the Chirals column lists the number of chiral outliers, the number of chiral centers analysed, the number of these observed in the model and the number defined in the Chemical Component Dictionary. Similar counts are reported in the Torsion and Rings columns. '-' means no outliers of that kind were identified.

Mol	Type	Chain	Res	Link	Chirals	Torsions	Rings
17	GNP	W	402	15	-	5/14/38/38	0/3/3/3

All (6) bond length outliers are listed below:

Mol	Chain	Res	Type	Atoms	Z	Observed(Å)	Ideal(Å)
17	W	402	GNP	C6-N1	3.96	1.39	1.33
17	W	402	GNP	PB-O1B	2.62	1.50	1.46
17	W	402	GNP	PB-O2B	-2.39	1.50	1.56
17	W	402	GNP	PG-O2G	-2.18	1.50	1.56
17	W	402	GNP	PG-O3G	-2.16	1.50	1.56
17	W	402	GNP	PG-O1G	2.08	1.49	1.46

All (6) bond angle outliers are listed below:

Mol	Chain	Res	Type	Atoms	Z	Observed(°)	Ideal(°)
17	W	402	GNP	C5-C6-N1	-8.94	111.20	123.43
17	W	402	GNP	C2-N1-C6	5.94	125.37	115.93
17	W	402	GNP	O2B-PB-O1B	3.74	117.76	109.92
17	W	402	GNP	O2G-PG-O1G	-3.28	105.21	113.45
17	W	402	GNP	C2-N3-C4	-2.91	112.03	115.36
17	W	402	GNP	N3-C2-N1	-2.70	123.62	127.22

There are no chirality outliers.

All (5) torsion outliers are listed below:

Mol	Chain	Res	Type	Atoms
17	W	402	GNP	PB-N3B-PG-O1G
17	W	402	GNP	PG-N3B-PB-O1B
17	W	402	GNP	PA-O3A-PB-O1B
17	W	402	GNP	PA-O3A-PB-O2B
17	W	402	GNP	O4'-C4'-C5'-O5'

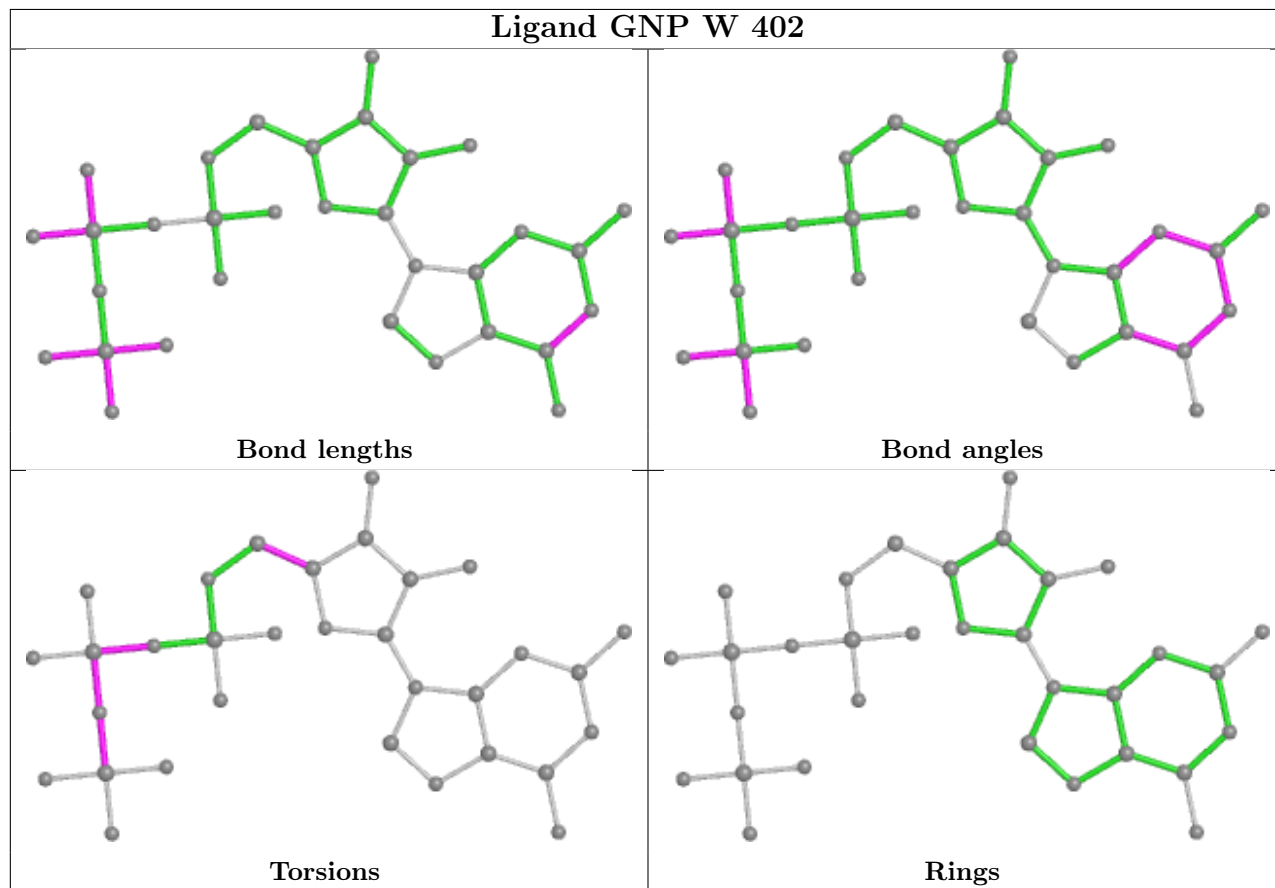
There are no ring outliers.

1 monomer is involved in 3 short contacts:

Mol	Chain	Res	Type	Clashes	Symm-Clashes
17	W	402	GNP	3	0

The following is a two-dimensional graphical depiction of Mogul quality analysis of bond lengths, bond angles, torsion angles, and ring geometry for all instances of the Ligand of Interest. In addition, ligands with molecular weight > 250 and outliers as shown on the validation Tables will also be included. For torsion angles, if less than 5% of the Mogul distribution of torsion angles is within 10 degrees of the torsion angle in question, then that torsion angle is considered an outlier. Any bond that is central to one or more torsion angles identified as an outlier by Mogul will be highlighted in the graph. For rings, the root-mean-square deviation (RMSD) between the ring

in question and similar rings identified by Mogul is calculated over all ring torsion angles. If the average RMSD is greater than 60 degrees and the minimal RMSD between the ring in question and any Mogul-identified rings is also greater than 60 degrees, then that ring is considered an outlier. The outliers are highlighted in purple. The color gray indicates Mogul did not find sufficient equivalents in the CSD to analyse the geometry.



5.7 Other polymers [i](#)

There are no such residues in this entry.

5.8 Polymer linkage issues [i](#)

There are no chain breaks in this entry.

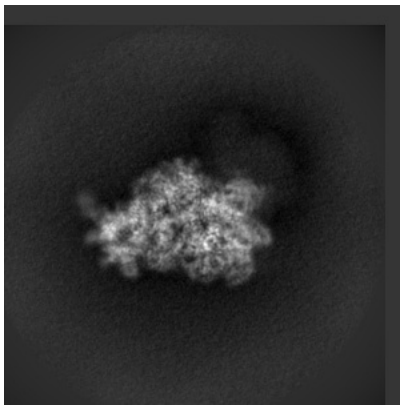
6 Map visualisation [i](#)

This section contains visualisations of the EMDB entry EMD-12244. These allow visual inspection of the internal detail of the map and identification of artifacts.

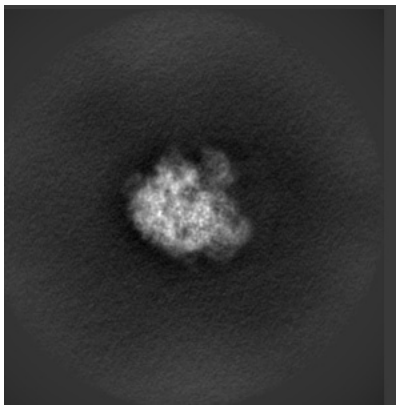
Images derived from a raw map, generated by summing the deposited half-maps, are presented below the corresponding image components of the primary map to allow further visual inspection and comparison with those of the primary map.

6.1 Orthogonal projections [i](#)

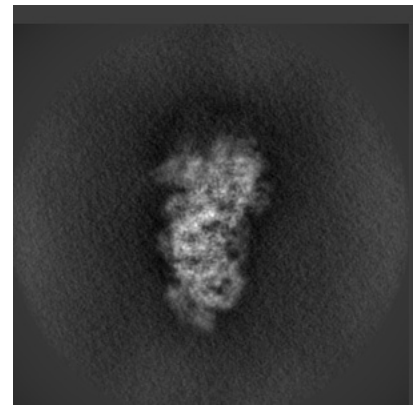
6.1.1 Primary map



X

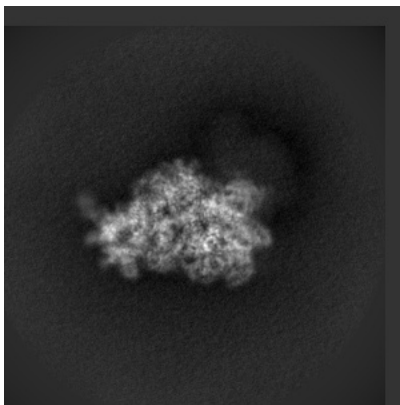


Y

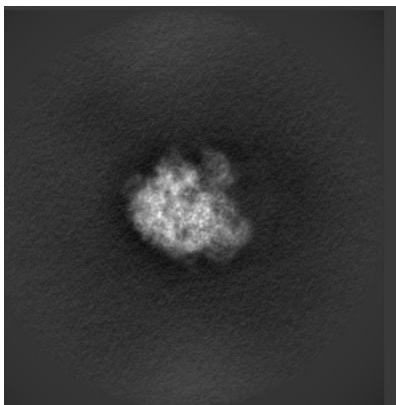


Z

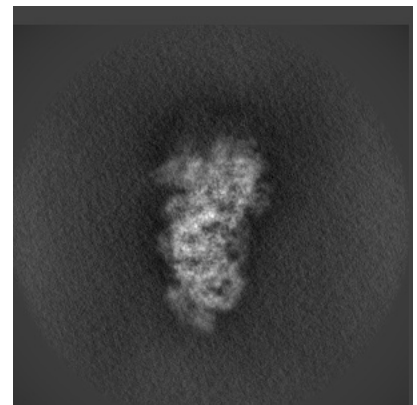
6.1.2 Raw map



X



Y

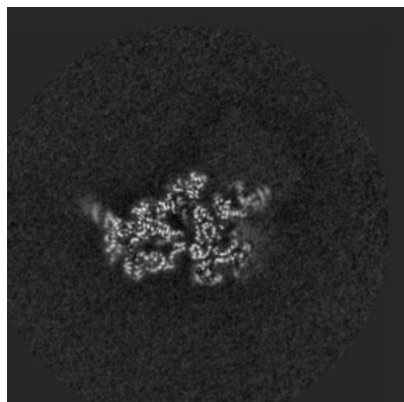


Z

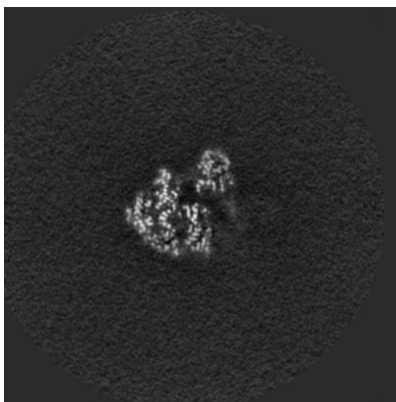
The images above show the map projected in three orthogonal directions.

6.2 Central slices [i](#)

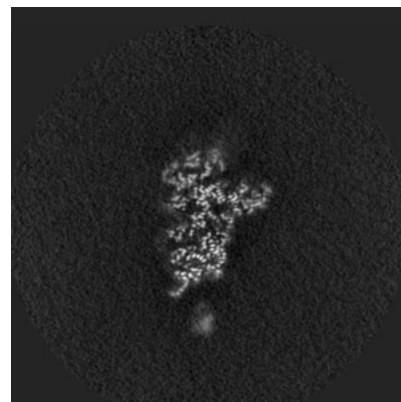
6.2.1 Primary map



X Index: 192

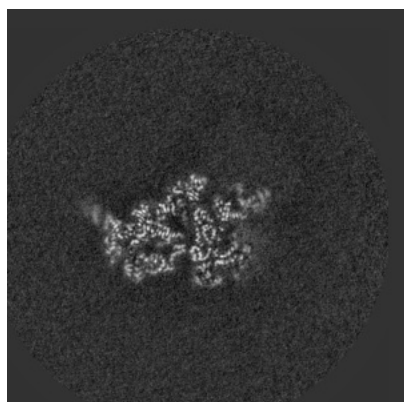


Y Index: 192

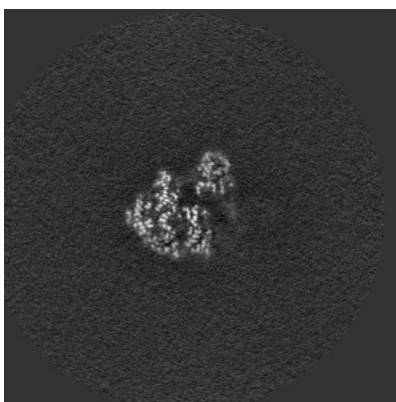


Z Index: 192

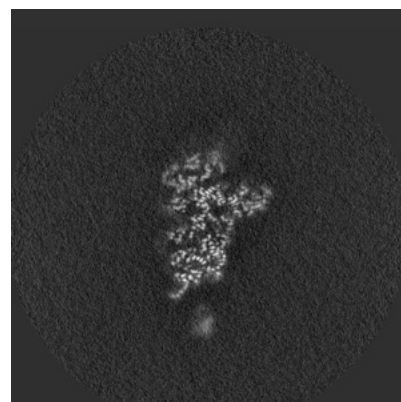
6.2.2 Raw map



X Index: 192



Y Index: 192

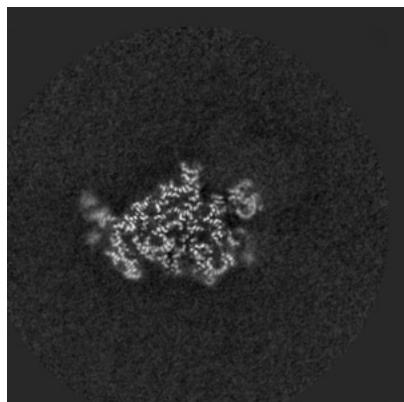


Z Index: 192

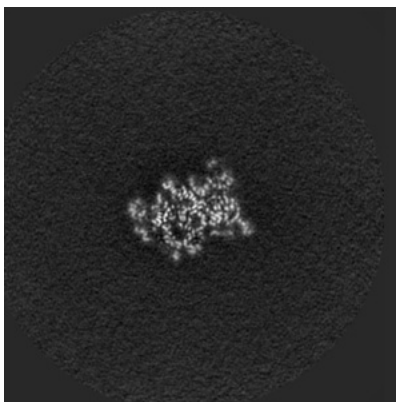
The images above show central slices of the map in three orthogonal directions.

6.3 Largest variance slices [i](#)

6.3.1 Primary map



X Index: 179

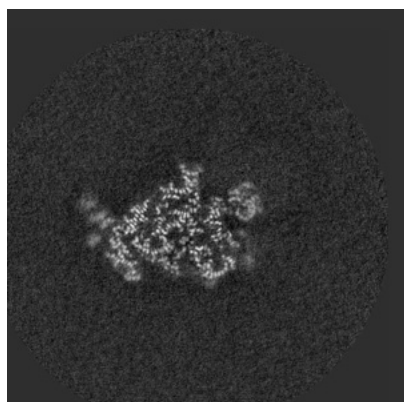


Y Index: 181

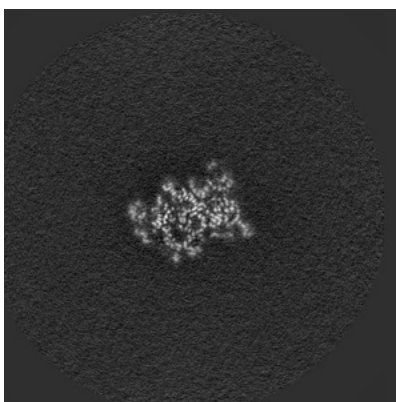


Z Index: 161

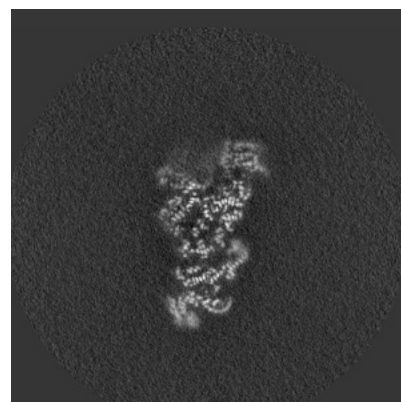
6.3.2 Raw map



X Index: 178



Y Index: 181

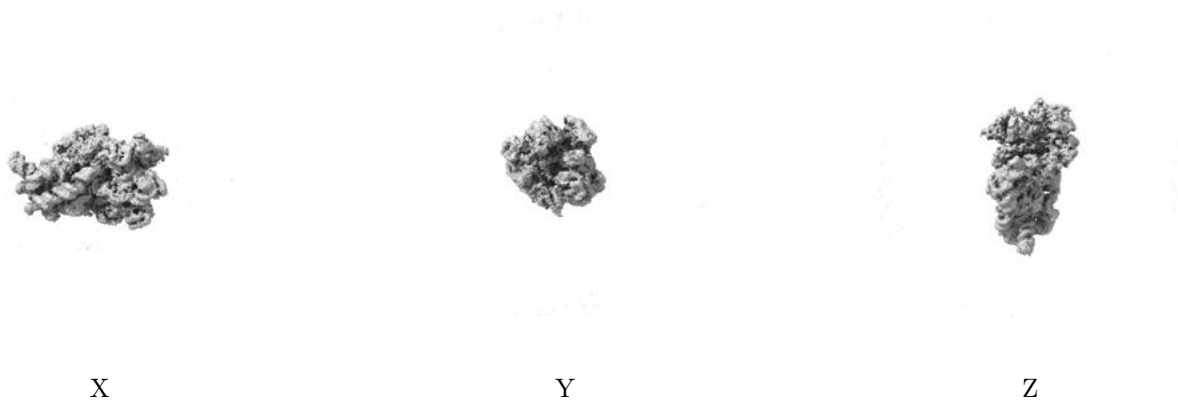


Z Index: 161

The images above show the largest variance slices of the map in three orthogonal directions.

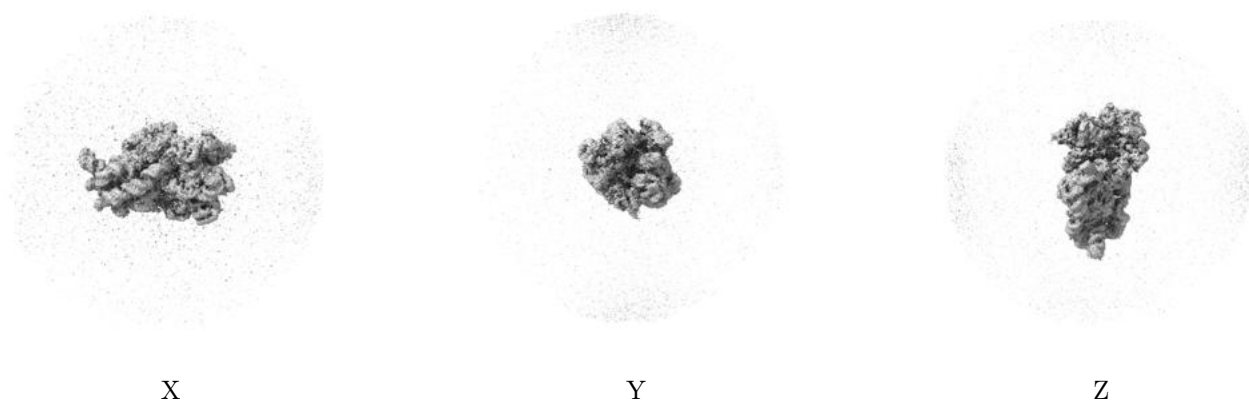
6.4 Orthogonal surface views [i](#)

6.4.1 Primary map



The images above show the 3D surface view of the map at the recommended contour level 0.016. These images, in conjunction with the slice images, may facilitate assessment of whether an appropriate contour level has been provided.

6.4.2 Raw map



These images show the 3D surface of the raw map. The raw map's contour level was selected so that its surface encloses the same volume as the primary map does at its recommended contour level.

6.5 Mask visualisation [i](#)

This section shows the 3D surface view of the primary map at 50% transparency overlaid with the specified mask at 0% transparency

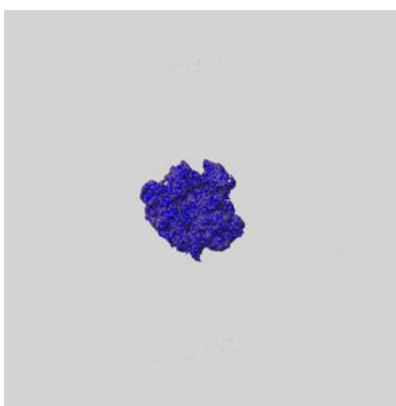
A mask typically either:

- Encompasses the whole structure
- Separates out a domain, a functional unit, a monomer or an area of interest from a larger structure

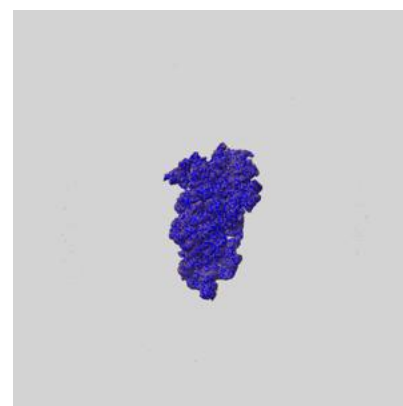
6.5.1 emd_12244_msk_1.map [i](#)



X



Y

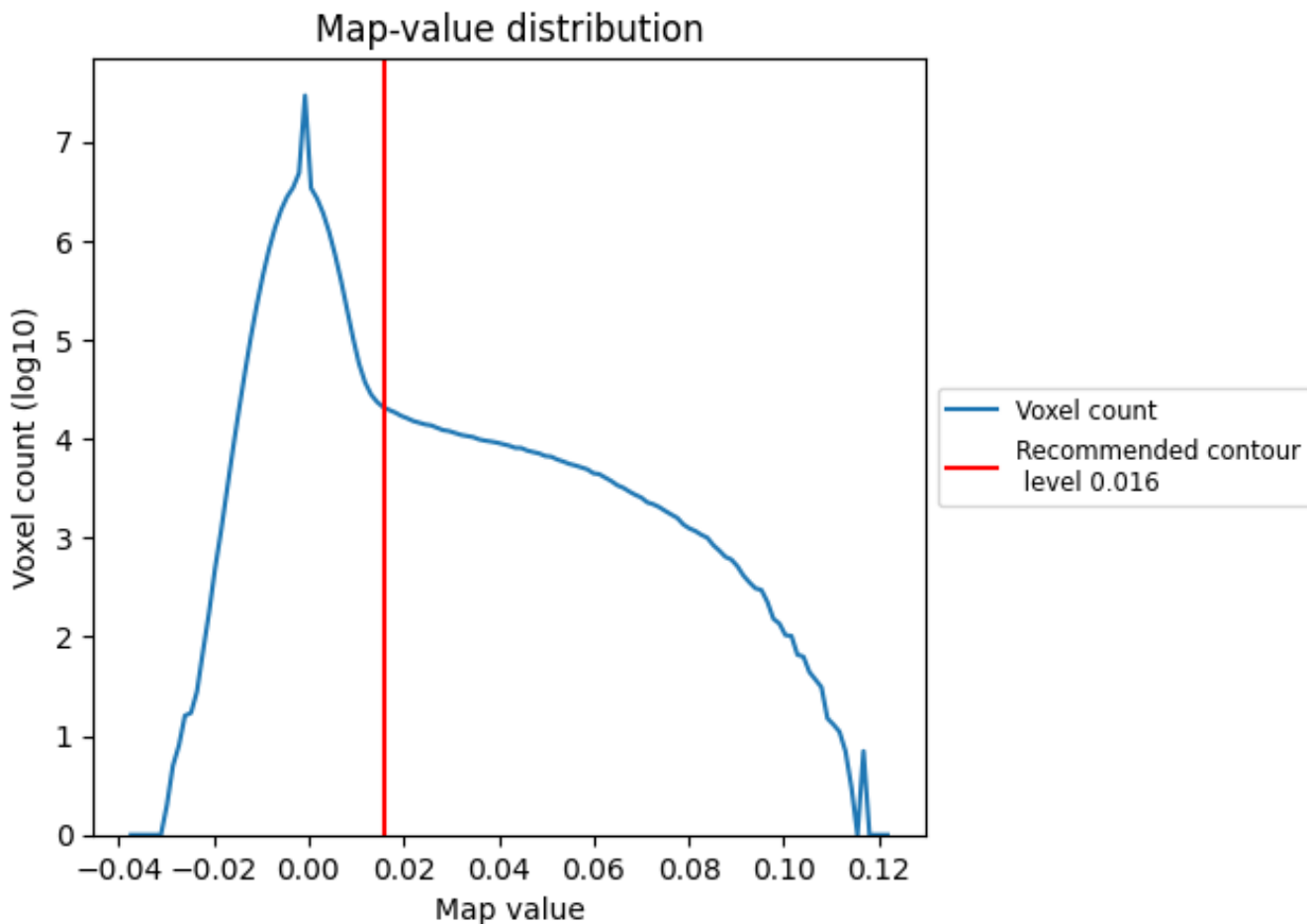


Z

7 Map analysis [i](#)

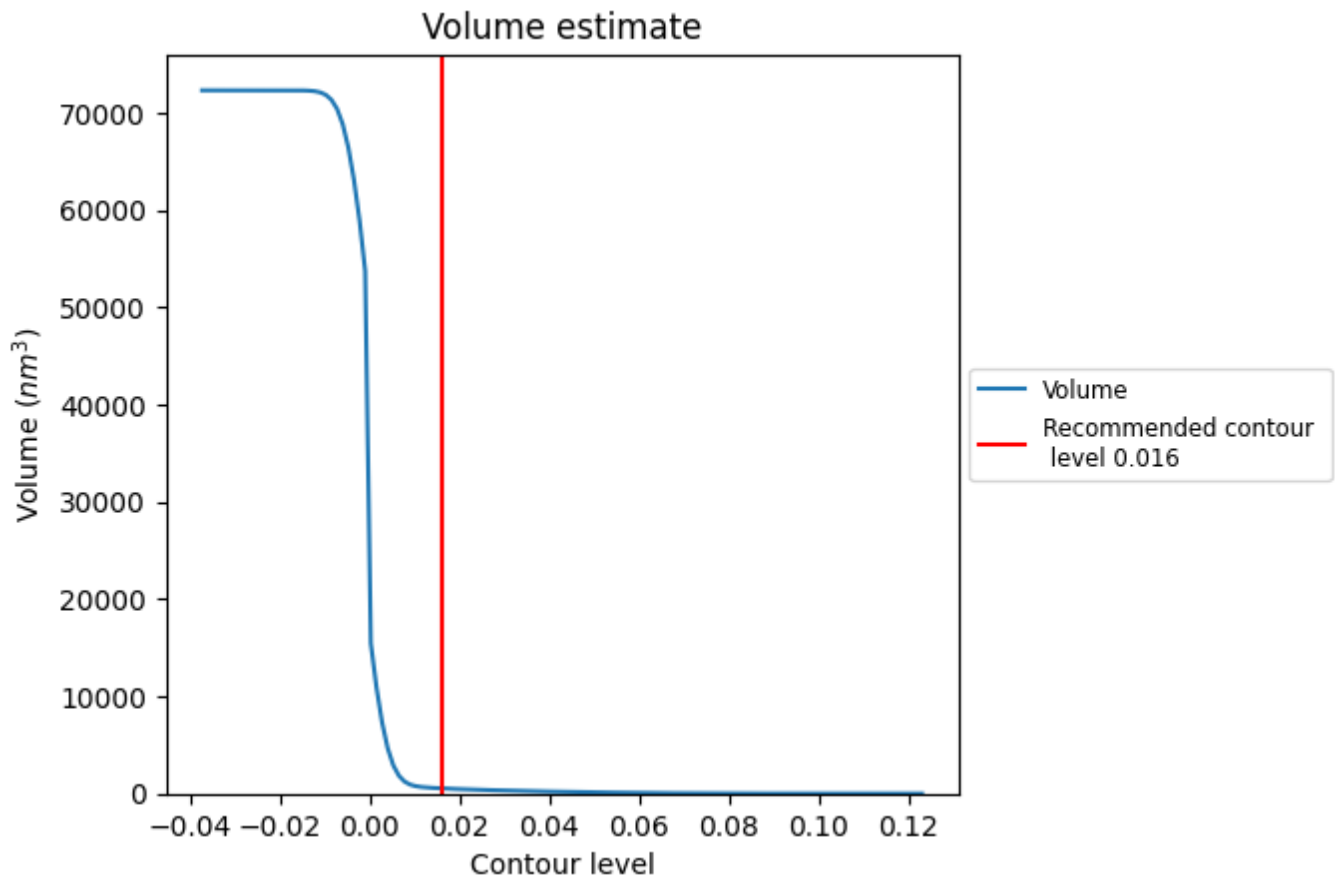
This section contains the results of statistical analysis of the map.

7.1 Map-value distribution [i](#)



The map-value distribution is plotted in 128 intervals along the x-axis. The y-axis is logarithmic. A spike in this graph at zero usually indicates that the volume has been masked.

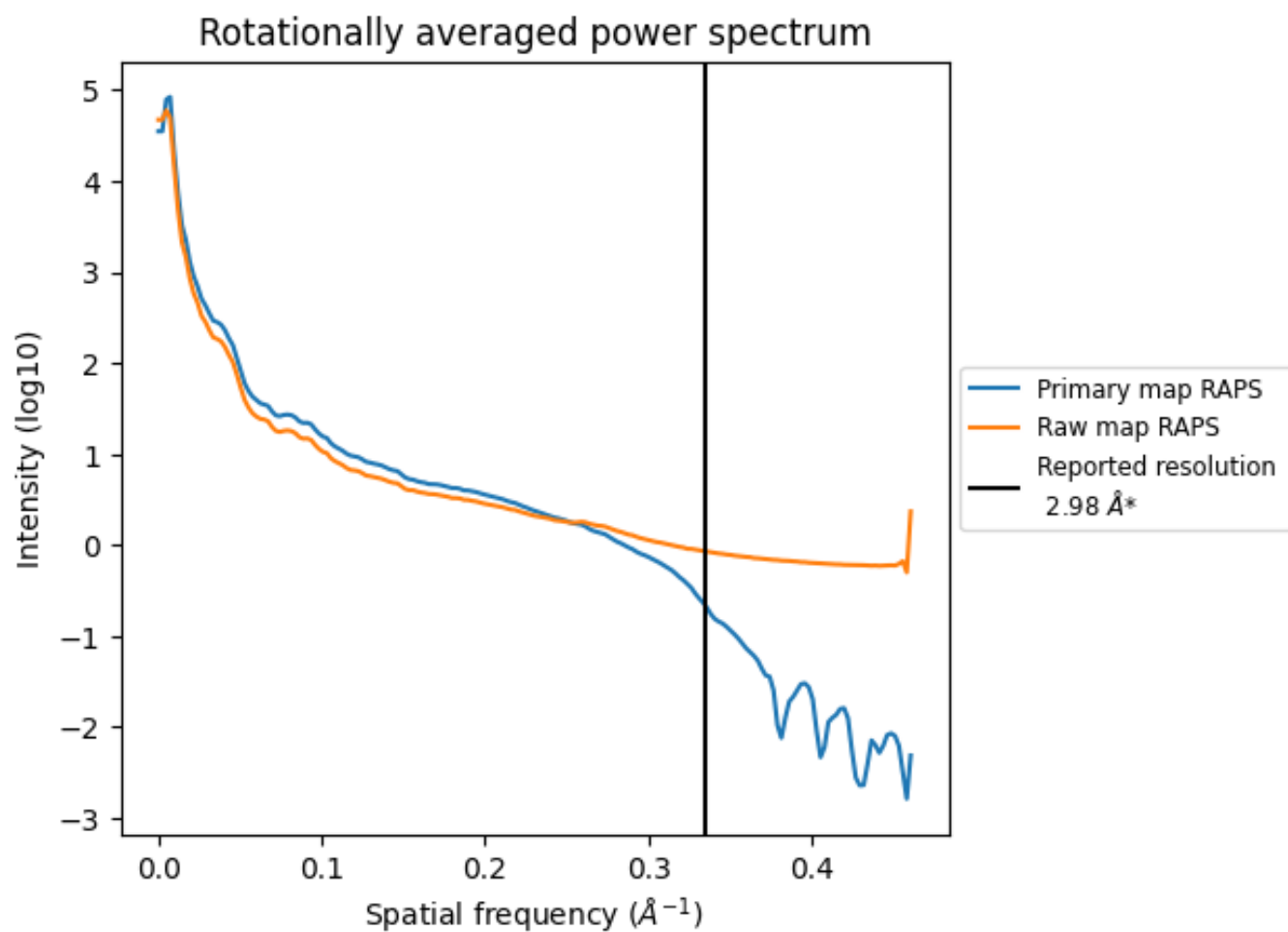
7.2 Volume estimate [i](#)



The volume at the recommended contour level is 536 nm³; this corresponds to an approximate mass of 484 kDa.

The volume estimate graph shows how the enclosed volume varies with the contour level. The recommended contour level is shown as a vertical line and the intersection between the line and the curve gives the volume of the enclosed surface at the given level.

7.3 Rotationally averaged power spectrum [i](#)

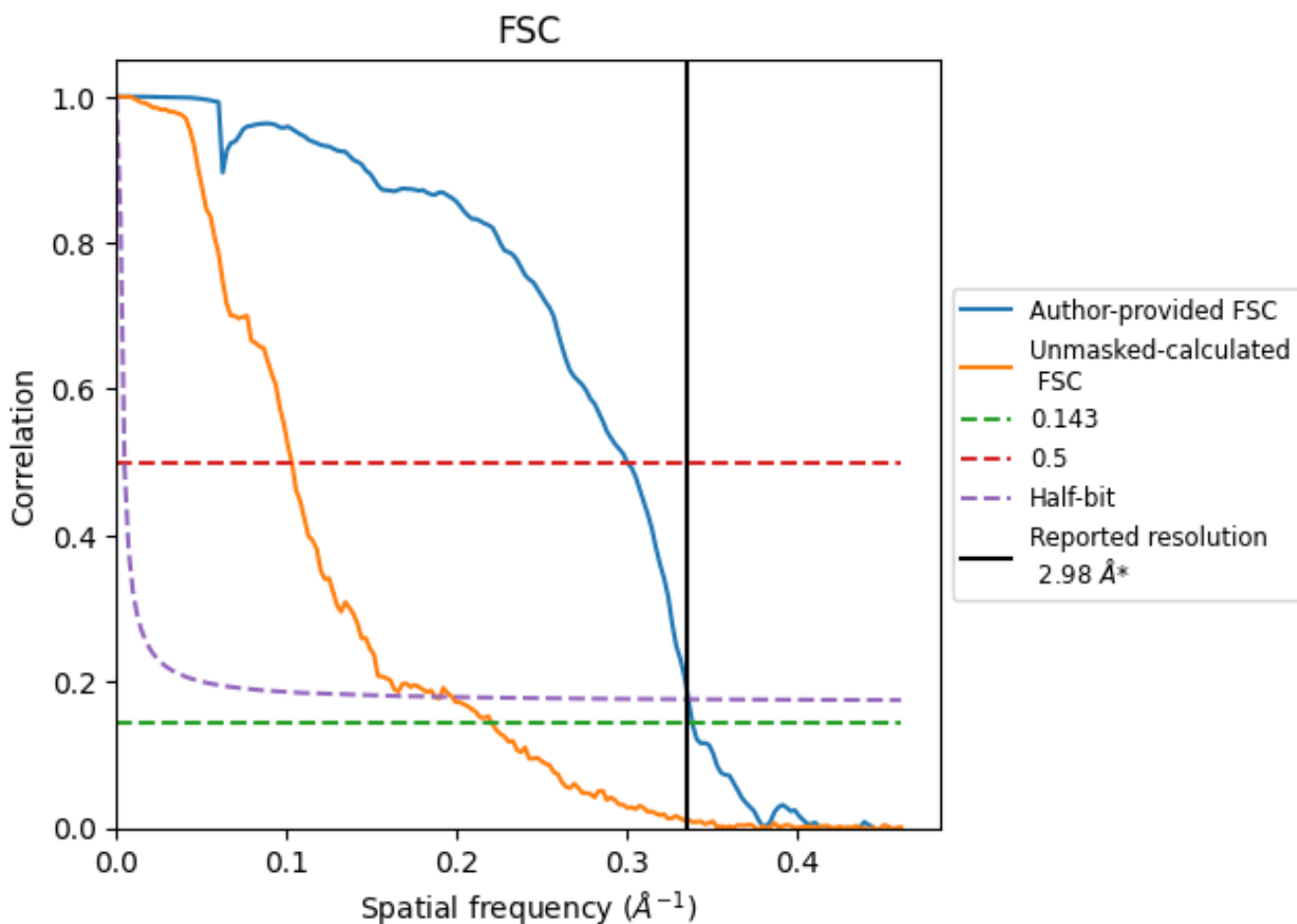


*Reported resolution corresponds to spatial frequency of 0.336 \AA^{-1}

8 Fourier-Shell correlation [i](#)

Fourier-Shell Correlation (FSC) is the most commonly used method to estimate the resolution of single-particle and subtomogram-averaged maps. The shape of the curve depends on the imposed symmetry, mask and whether or not the two 3D reconstructions used were processed from a common reference. The reported resolution is shown as a black line. A curve is displayed for the half-bit criterion in addition to lines showing the 0.143 gold standard cut-off and 0.5 cut-off.

8.1 FSC [i](#)



*Reported resolution corresponds to spatial frequency of 0.336 \AA^{-1}

8.2 Resolution estimates [i](#)

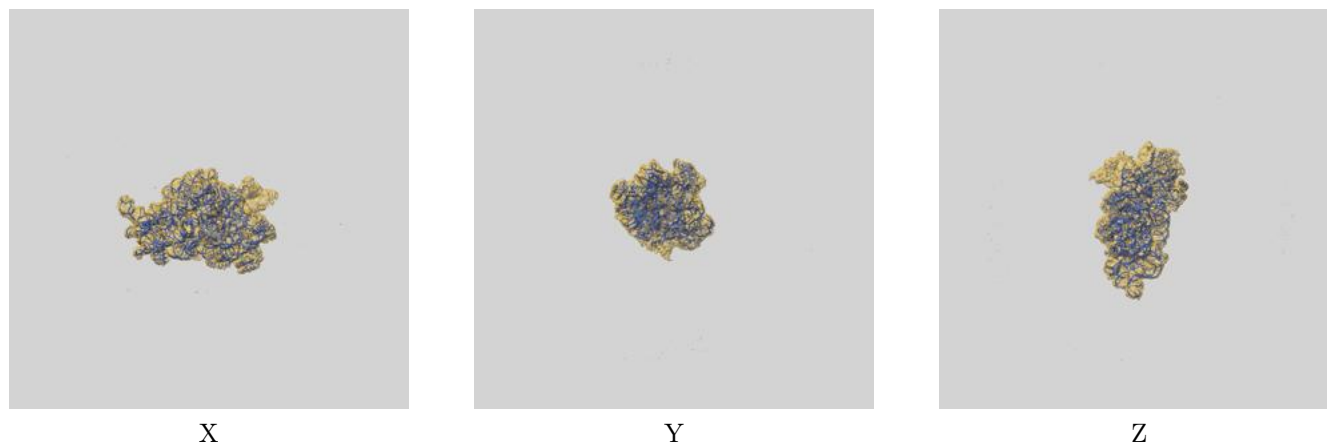
Resolution estimate (Å)	Estimation criterion (FSC cut-off)		
	0.143	0.5	Half-bit
Reported by author	2.98	-	-
Author-provided FSC curve	2.96	3.33	2.98
Unmasked-calculated*	4.54	9.71	5.35

*Resolution estimate based on FSC curve calculated by comparison of deposited half-maps. The value from deposited half-maps intersecting FSC 0.143 CUT-OFF 4.54 differs from the reported value 2.98 by more than 10 %

9 Map-model fit [i](#)

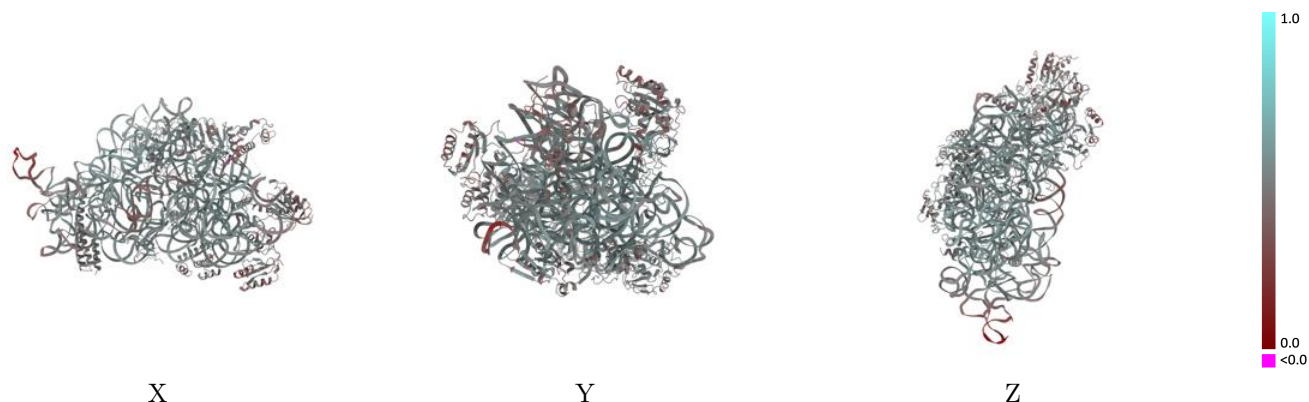
This section contains information regarding the fit between EMDB map EMD-12244 and PDB model 7BOI. Per-residue inclusion information can be found in section 3 on page 7.

9.1 Map-model overlay [i](#)



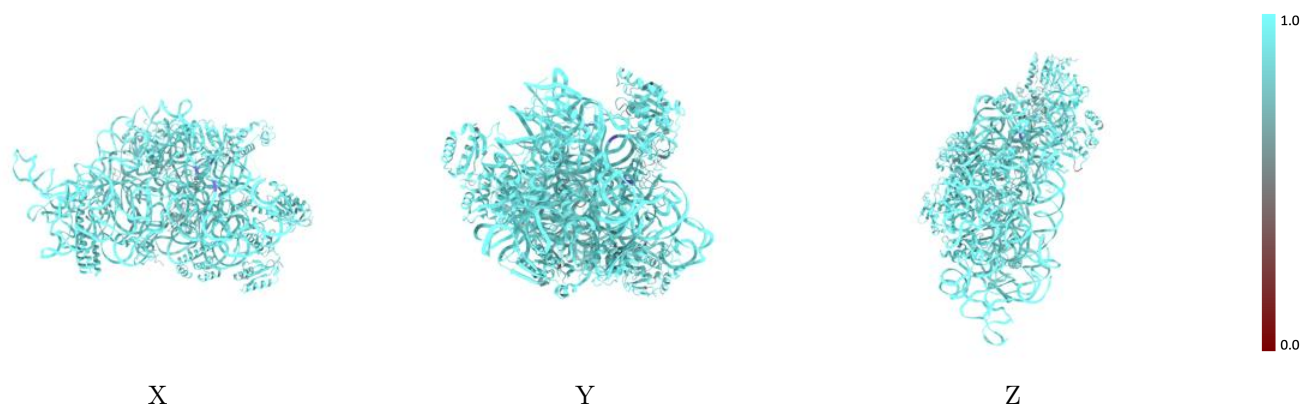
The images above show the 3D surface view of the map at the recommended contour level 0.016 at 50% transparency in yellow overlaid with a ribbon representation of the model coloured in blue. These images allow for the visual assessment of the quality of fit between the atomic model and the map.

9.2 Q-score mapped to coordinate model [i](#)



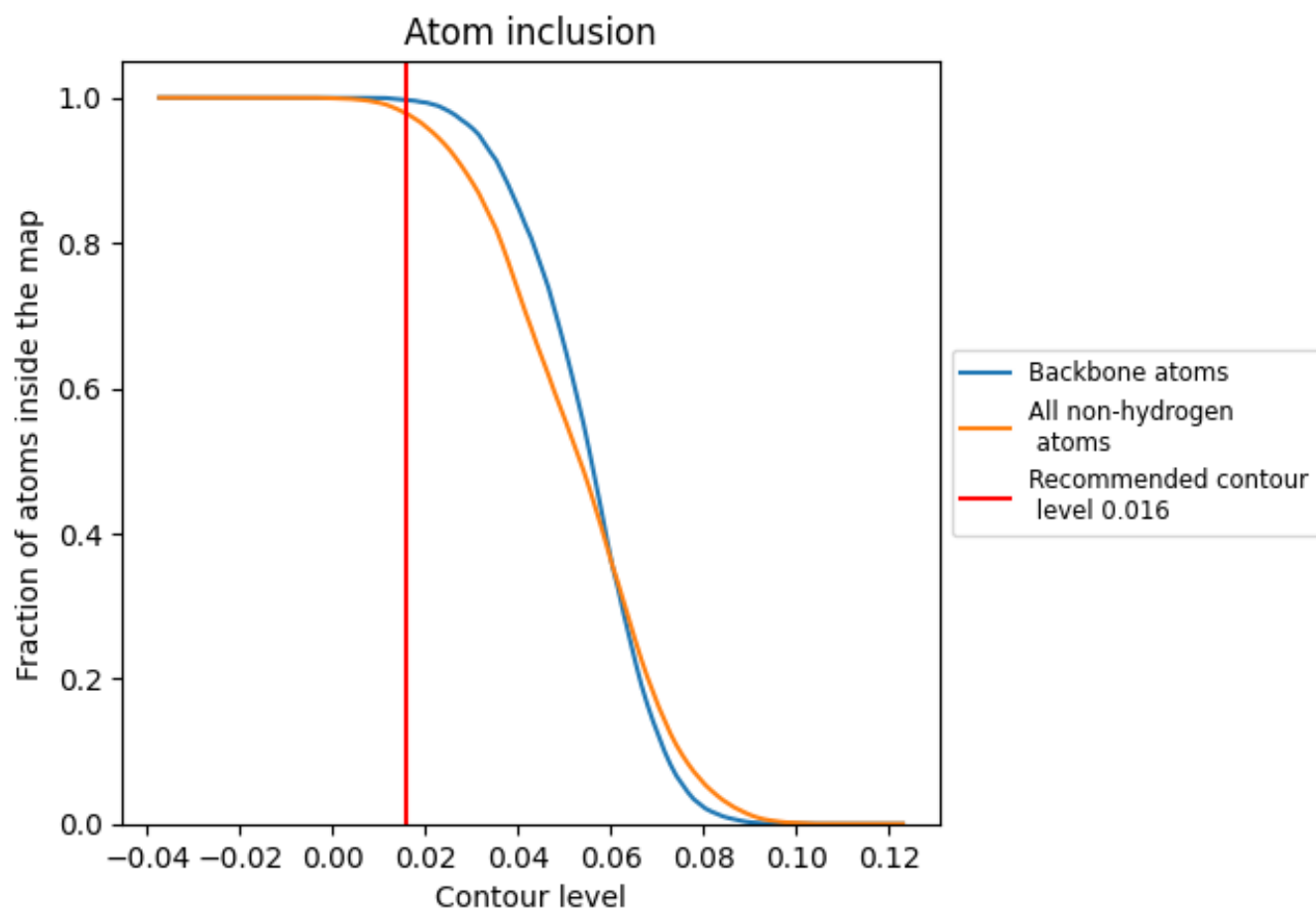
The images above show the model with each residue coloured according to its Q-score. This shows their resolvability in the map with higher Q-score values reflecting better resolvability. Please note: Q-score is calculating the resolvability of atoms, and thus high values are only expected at resolutions at which atoms can be resolved. Low Q-score values may therefore be expected for many entries.

9.3 Atom inclusion mapped to coordinate model [i](#)



The images above show the model with each residue coloured according to its atom inclusion. This shows to what extent they are inside the map at the recommended contour level (0.016).























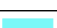





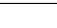
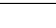
9.4 Atom inclusion [i](#)



At the recommended contour level, 100% of all backbone atoms, 98% of all non-hydrogen atoms, are inside the map.

9.5 Map-model fit summary

The table lists the average atom inclusion at the recommended contour level (0.016) and Q-score for the entire model and for each chain.

Chain	Atom inclusion	Q-score
All	 0.9775	 0.5020
A	 0.9975	 0.5140
D	 0.9535	 0.5000
E	 0.9496	 0.5040
F	 0.9334	 0.4260
H	 0.9396	 0.5020
K	 0.9484	 0.4330
L	 0.9361	 0.5230
O	 0.9609	 0.4750
P	 0.9585	 0.5110
Q	 0.9636	 0.5060
R	 0.9494	 0.4630
T	 0.9740	 0.4920
U	 0.8511	 0.4240
W	 0.9189	 0.4580

