



Full wwPDB X-ray Structure Validation Report ⓘ

May 22, 2020 – 01:27 pm BST

PDB ID : 3BP1
Title : Crystal structure of putative 7-cyano-7-deazaguanine reductase QueF from *Vibrio cholerae* O1 biovar eltor
Authors : Kim, Y.; Zhou, M.; Moy, S.; Joachimiak, A.; Midwest Center for Structural Genomics (MCSG)
Deposited on : 2007-12-18
Resolution : 1.53 Å(reported)

This is a Full wwPDB X-ray Structure Validation Report for a publicly released PDB entry.

We welcome your comments at validation@mail.wwpdb.org

A user guide is available at

<https://www.wwpdb.org/validation/2017/XrayValidationReportHelp>

with specific help available everywhere you see the ⓘ symbol.

The following versions of software and data (see [references ⓘ](#)) were used in the production of this report:

MolProbity : 4.02b-467
Mogul : 1.8.5 (274361), CSD as541be (2020)
Xtriage (Phenix) : 1.13
EDS : 2.11
Percentile statistics : 20191225.v01 (using entries in the PDB archive December 25th 2019)
Refmac : 5.8.0158
CCP4 : 7.0.044 (Gargrove)
Ideal geometry (proteins) : Engh & Huber (2001)
Ideal geometry (DNA, RNA) : Parkinson et al. (1996)
Validation Pipeline (wwPDB-VP) : 2.11

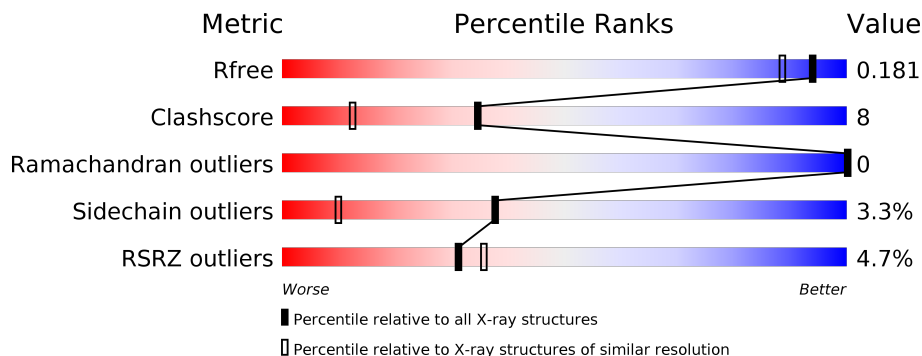
1 Overall quality at a glance

The following experimental techniques were used to determine the structure:

X-RAY DIFFRACTION

The reported resolution of this entry is 1.53 Å.

Percentile scores (ranging between 0-100) for global validation metrics of the entry are shown in the following graphic. The table shows the number of entries on which the scores are based.



Metric	Whole archive (#Entries)	Similar resolution (#Entries, resolution range(Å))
R_{free}	130704	2556 (1.56-1.52)
Clashscore	141614	2634 (1.56-1.52)
Ramachandran outliers	138981	2580 (1.56-1.52)
Sidechain outliers	138945	2577 (1.56-1.52)
RSRZ outliers	127900	2524 (1.56-1.52)

The table below summarises the geometric issues observed across the polymeric chains and their fit to the electron density. The red, orange, yellow and green segments on the lower bar indicate the fraction of residues that contain outliers for ≥ 3 , 2, 1 and 0 types of geometric quality criteria respectively. A grey segment represents the fraction of residues that are not modelled. The numeric value for each fraction is indicated below the corresponding segment, with a dot representing fractions $\leq 5\%$. The upper red bar (where present) indicates the fraction of residues that have poor fit to the electron density. The numeric value is given above the bar.

Mol	Chain	Length	Quality of chain
1	A	290	 5% 73% 14% 12%
1	B	290	 2% 77% 10% 12%
1	C	290	 2% 75% 11% 12%
1	D	290	 7% 73% 14% 12%

The following table lists non-polymeric compounds, carbohydrate monomers and non-standard residues in protein, DNA, RNA chains that are outliers for geometric or electron-density-fit crite-

ria:

Mol	Type	Chain	Res	Chirality	Geometry	Clashes	Electron density
2	PO4	C	288	-	-	X	-

2 Entry composition [i](#)

There are 6 unique types of molecules in this entry. The entry contains 10479 atoms, of which 0 are hydrogens and 0 are deuteriums.

In the tables below, the ZeroOcc column contains the number of atoms modelled with zero occupancy, the AltConf column contains the number of residues with at least one atom in alternate conformation and the Trace column contains the number of residues modelled with at most 2 atoms.

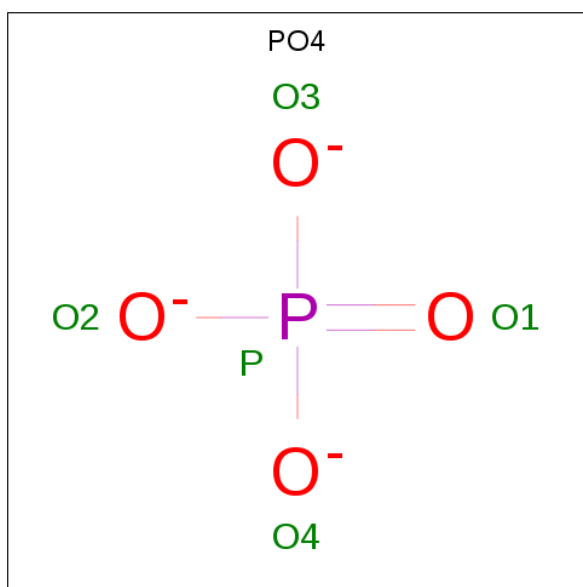
- Molecule 1 is a protein called NADPH-dependent 7-cyano-7-deazaguanine reductase.

Mol	Chain	Residues	Atoms						ZeroOcc	AltConf	Trace
			Total	C	N	O	S	Se			
1	A	255	2330	1445	411	463	6	5	0	33	0
1	B	254	2252	1394	402	443	6	7	0	25	0
1	C	254	2326	1441	415	457	6	7	0	34	0
1	D	256	2300	1430	404	455	6	5	0	29	0

There are 12 discrepancies between the modelled and reference sequences:

Chain	Residue	Modelled	Actual	Comment	Reference
A	-2	SER	-	EXPRESSION TAG	UNP Q9KTK0
A	-1	ASN	-	EXPRESSION TAG	UNP Q9KTK0
A	0	ALA	-	EXPRESSION TAG	UNP Q9KTK0
B	-2	SER	-	EXPRESSION TAG	UNP Q9KTK0
B	-1	ASN	-	EXPRESSION TAG	UNP Q9KTK0
B	0	ALA	-	EXPRESSION TAG	UNP Q9KTK0
C	-2	SER	-	EXPRESSION TAG	UNP Q9KTK0
C	-1	ASN	-	EXPRESSION TAG	UNP Q9KTK0
C	0	ALA	-	EXPRESSION TAG	UNP Q9KTK0
D	-2	SER	-	EXPRESSION TAG	UNP Q9KTK0
D	-1	ASN	-	EXPRESSION TAG	UNP Q9KTK0
D	0	ALA	-	EXPRESSION TAG	UNP Q9KTK0

- Molecule 2 is PHOSPHATE ION (three-letter code: PO4) (formula: O₄P).

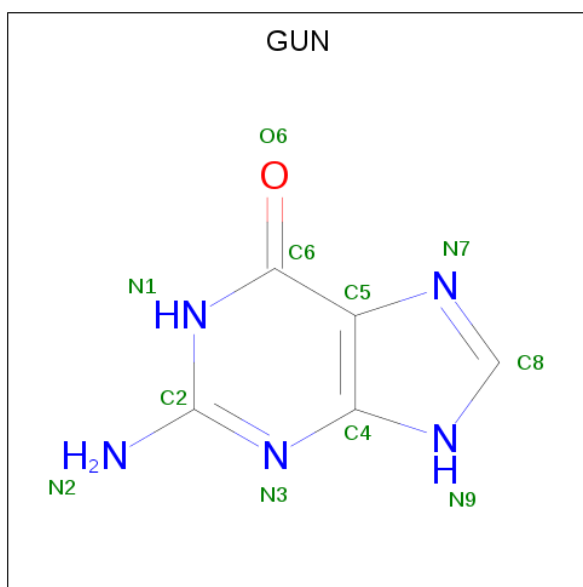


Mol	Chain	Residues	Atoms	ZeroOcc	AltConf
2	A	1	Total O P 5 4 1	0	0
2	B	1	Total O P 5 4 1	0	0
2	B	1	Total O P 5 4 1	0	0
2	C	1	Total O P 5 4 1	0	0
2	C	1	Total O P 5 4 1	0	0
2	D	1	Total O P 5 4 1	0	0

- Molecule 3 is MAGNESIUM ION (three-letter code: MG) (formula: Mg).

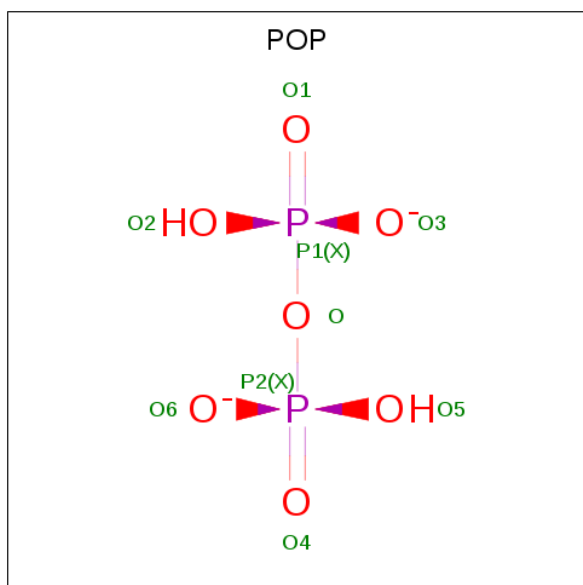
Mol	Chain	Residues	Atoms	ZeroOcc	AltConf
3	A	1	Total Mg 1 1	0	0
3	D	1	Total Mg 1 1	0	0

- Molecule 4 is GUANINE (three-letter code: GUN) (formula: C₅H₅N₅O).



Mol	Chain	Residues	Atoms				ZeroOcc	AltConf
			Total	C	N	O		
4	A	1	Total 11	C 5	N 5	O 1	0	0
4	B	1	Total 11	C 5	N 5	O 1	0	0
4	C	1	Total 11	C 5	N 5	O 1	0	0
4	D	1	Total 11	C 5	N 5	O 1	0	0

- Molecule 5 is PYROPHOSPHATE 2- (three-letter code: POP) (formula: $\text{H}_2\text{O}_7\text{P}_2$).



Mol	Chain	Residues	Atoms			ZeroOcc	AltConf
5	B	1	Total	O	P	0	0
			9	7	2		
5	C	1	Total	O	P	0	0
			9	7	2		

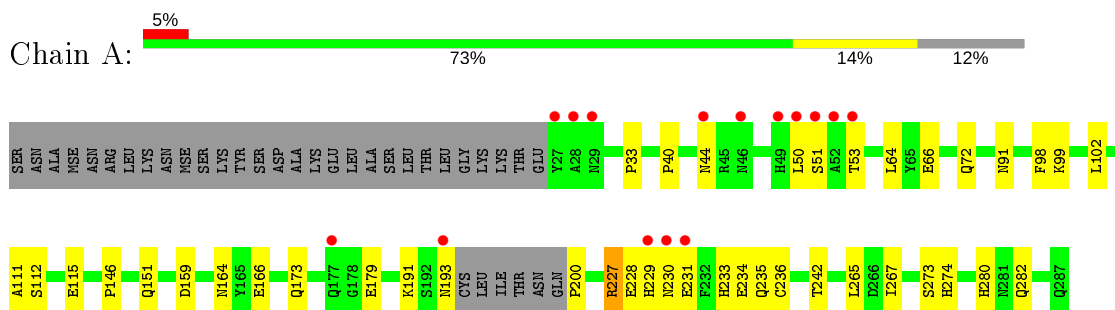
- Molecule 6 is water.

Mol	Chain	Residues	Atoms		ZeroOcc	AltConf
6	A	291	Total	O	0	0
			291	291		
6	B	295	Total	O	0	0
			295	295		
6	C	293	Total	O	0	0
			293	293		
6	D	298	Total	O	0	0
			298	298		

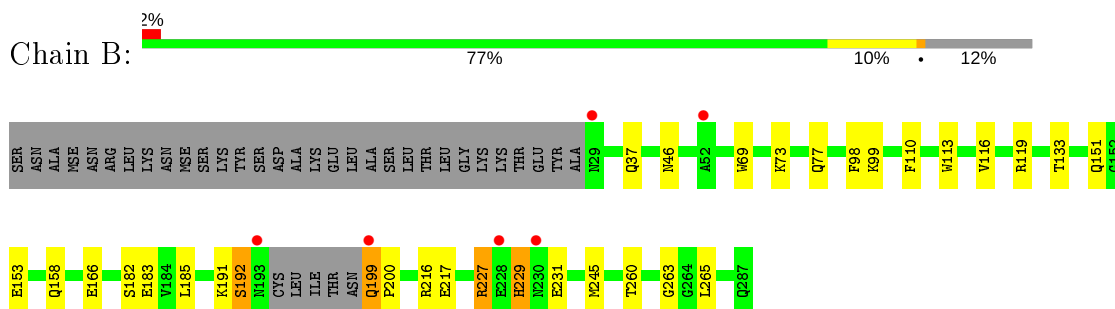
3 Residue-property plots [i](#)

These plots are drawn for all protein, RNA and DNA chains in the entry. The first graphic for a chain summarises the proportions of the various outlier classes displayed in the second graphic. The second graphic shows the sequence view annotated by issues in geometry and electron density. Residues are color-coded according to the number of geometric quality criteria for which they contain at least one outlier: green = 0, yellow = 1, orange = 2 and red = 3 or more. A red dot above a residue indicates a poor fit to the electron density ($RSRZ > 2$). Stretches of 2 or more consecutive residues without any outlier are shown as a green connector. Residues present in the sample, but not in the model, are shown in grey.

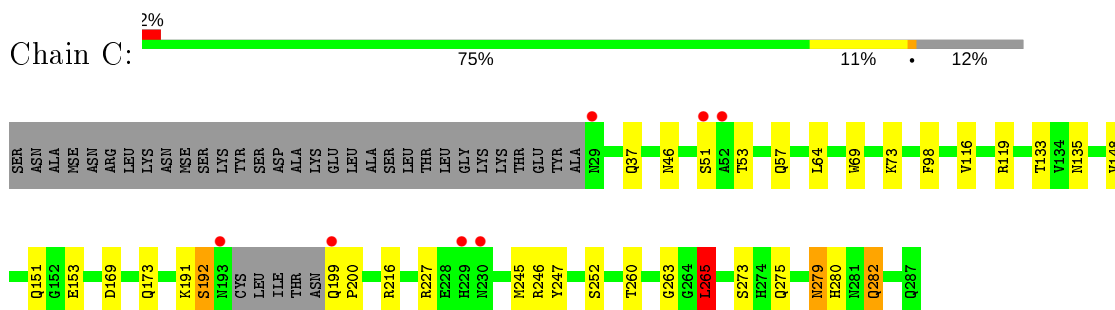
- Molecule 1: NADPH-dependent 7-cyano-7-deazaguanine reductase



- Molecule 1: NADPH-dependent 7-cyano-7-deazaguanine reductase

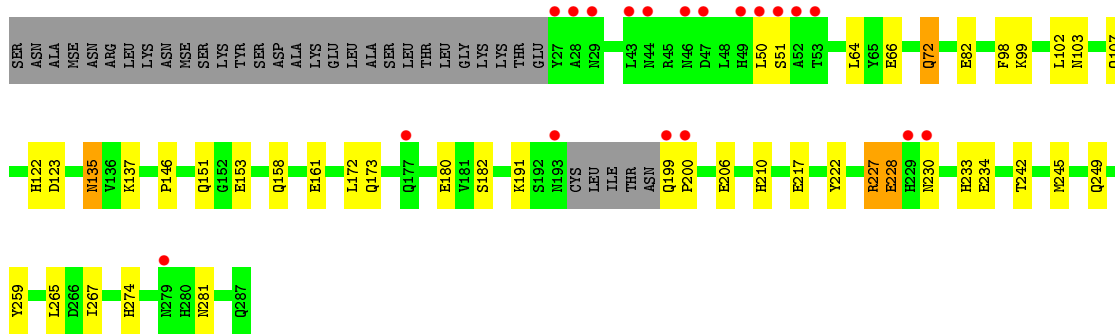


- Molecule 1: NADPH-dependent 7-cyano-7-deazaguanine reductase



- Molecule 1: NADPH-dependent 7-cyano-7-deazaguanine reductase





4 Data and refinement statistics

Property	Value	Source
Space group	P 1	Depositor
Cell constants a, b, c, α , β , γ	71.52Å 71.58Å 71.51Å 119.25° 110.18° 99.58°	Depositor
Resolution (Å)	26.16 – 1.53 26.16 – 1.53	Depositor EDS
% Data completeness (in resolution range)	93.9 (26.16-1.53) 93.7 (26.16-1.53)	Depositor EDS
R_{merge}	(Not available)	Depositor
R_{sym}	0.07	Depositor
$\langle I/\sigma(I) \rangle$ ¹	1.81 (at 1.53Å)	Xtriage
Refinement program	REFMAC 5.2.0019	Depositor
R, R_{free}	0.143 , 0.183 0.141 , 0.181	Depositor DCC
R_{free} test set	7527 reflections (5.02%)	wwPDB-VP
Wilson B-factor (Å ²)	15.9	Xtriage
Anisotropy	0.211	Xtriage
Bulk solvent k_{sol} (e/Å ³), B_{sol} (Å ²)	0.40 , 51.4	EDS
L-test for twinning ²	$\langle L \rangle = 0.51$, $\langle L^2 \rangle = 0.34$	Xtriage
Estimated twinning fraction	0.011 for l,-h-k-l,h 0.010 for k,h,-h-k-l 0.480 for -h-k-l,l,k	Xtriage
F_o, F_c correlation	0.98	EDS
Total number of atoms	10479	wwPDB-VP
Average B, all atoms (Å ²)	21.0	wwPDB-VP

Xtriage's analysis on translational NCS is as follows: *The largest off-origin peak in the Patterson function is 5.42% of the height of the origin peak. No significant pseudotranslation is detected.*

¹Intensities estimated from amplitudes.

²Theoretical values of $\langle |L| \rangle$, $\langle L^2 \rangle$ for acentric reflections are 0.5, 0.333 respectively for untwinned datasets, and 0.375, 0.2 for perfectly twinned datasets.

5 Model quality i

5.1 Standard geometry i

Bond lengths and bond angles in the following residue types are not validated in this section: MG, PO4, POP, GUN

The Z score for a bond length (or angle) is the number of standard deviations the observed value is removed from the expected value. A bond length (or angle) with $|Z| > 5$ is considered an outlier worth inspection. RMSZ is the root-mean-square of all Z scores of the bond lengths (or angles).

Mol	Chain	Bond lengths		Bond angles	
		RMSZ	# Z >5	RMSZ	# Z >5
1	A	0.74	1/2374 (0.0%)	0.77	0/3215
1	B	0.78	1/2293 (0.0%)	0.78	0/3103
1	C	0.76	2/2368 (0.1%)	0.84	4/3204 (0.1%)
1	D	0.72	0/2344	0.77	1/3173 (0.0%)
All	All	0.75	4/9379 (0.0%)	0.79	5/12695 (0.0%)

All (4) bond length outliers are listed below:

Mol	Chain	Res	Type	Atoms	Z	Observed(Å)	Ideal(Å)
1	C	273	SER	CB-OG	-6.57	1.33	1.42
1	B	227	ARG	CZ-NH2	6.43	1.41	1.33
1	A	227	ARG	CZ-NH2	5.23	1.39	1.33
1	C	216	ARG	CZ-NH1	5.17	1.39	1.33

All (5) bond angle outliers are listed below:

Mol	Chain	Res	Type	Atoms	Z	Observed(°)	Ideal(°)
1	C	216	ARG	NE-CZ-NH2	-13.03	113.79	120.30
1	C	216	ARG	NE-CZ-NH1	10.38	125.49	120.30
1	C	265[A]	LEU	CA-CB-CG	6.82	130.98	115.30
1	C	265[B]	LEU	CA-CB-CG	6.82	130.98	115.30
1	D	227	ARG	NE-CZ-NH2	5.09	122.85	120.30

There are no chirality outliers.

There are no planarity outliers.

5.2 Too-close contacts [\(i\)](#)

In the following table, the Non-H and H(model) columns list the number of non-hydrogen atoms and hydrogen atoms in the chain respectively. The H(added) column lists the number of hydrogen atoms added and optimized by MolProbity. The Clashes column lists the number of clashes within the asymmetric unit, whereas Symm-Clashes lists symmetry related clashes.

Mol	Chain	Non-H	H(model)	H(added)	Clashes	Symm-Clashes
1	A	2330	0	2179	36	0
1	B	2252	0	2129	31	1
1	C	2326	0	2202	47	0
1	D	2300	0	2163	50	0
2	A	5	0	0	0	0
2	B	10	0	0	0	0
2	C	10	0	0	3	0
2	D	5	0	0	0	0
3	A	1	0	0	0	0
3	D	1	0	0	0	0
4	A	11	0	5	0	0
4	B	11	0	5	0	0
4	C	11	0	5	0	0
4	D	11	0	5	0	0
5	B	9	0	0	1	0
5	C	9	0	0	0	0
6	A	291	0	0	6	0
6	B	295	0	0	10	0
6	C	293	0	0	16	1
6	D	298	0	0	12	0
All	All	10479	0	8693	150	1

The all-atom clashscore is defined as the number of clashes found per 1000 atoms (including hydrogen atoms). The all-atom clashscore for this structure is 8.

All (150) close contacts within the same asymmetric unit are listed below, sorted by their clash magnitude.

Atom-1	Atom-2	Interatomic distance (Å)	Clash overlap (Å)
1:C:245[B]:MSE:HG2	6:C:356:HOH:O	1.44	1.15
1:C:133[A]:THR:HG22	6:C:397:HOH:O	1.50	1.10
1:B:245[B]:MSE:HG2	6:B:386:HOH:O	1.53	1.09
1:B:133[A]:THR:HG22	6:B:402:HOH:O	1.53	1.08
1:C:280:HIS:HE1	6:C:429:HOH:O	1.41	0.99
1:D:107[A]:GLN:HG3	6:D:430:HOH:O	1.61	0.99
1:B:37[B]:GLN:NE2	6:B:584:HOH:O	1.97	0.96

Continued on next page...

Continued from previous page...

Atom-1	Atom-2	Interatomic distance (Å)	Clash overlap (Å)
1:C:148:VAL:HG21	1:C:282[A]:GLN:HG3	1.45	0.95
1:D:172[B]:LEU:HD11	1:D:222:TYR:CG	2.02	0.95
1:C:227:ARG:HH21	1:D:107[A]:GLN:NE2	1.64	0.95
1:A:66[A]:GLU:HG2	6:A:518:HOH:O	1.67	0.93
6:C:565:HOH:O	1:D:66[B]:GLU:HG2	1.69	0.92
1:B:245[A]:MSE:HG2	6:B:386:HOH:O	1.69	0.90
1:D:245[A]:MSE:HG2	6:D:499:HOH:O	1.73	0.88
1:D:172[B]:LEU:HD11	1:D:222:TYR:CD1	2.09	0.87
1:D:191:LYS:HE2	1:D:200:PRO:HB3	1.56	0.86
1:D:82[A]:GLU:HG3	6:D:578:HOH:O	1.78	0.83
1:B:191:LYS:HD3	1:B:227:ARG:HG3	1.61	0.83
1:A:64:LEU:HD22	1:A:265[A]:LEU:HD22	1.62	0.80
1:A:99[B]:LYS:HZ1	1:B:199:GLN:CG	1.93	0.80
1:A:164:ASN:OD1	1:A:166[B]:GLU:HG3	1.82	0.80
1:C:148:VAL:CG2	1:C:282[A]:GLN:HG3	2.13	0.79
1:D:233:HIS:HD2	1:D:267[A]:ILE:CG2	1.95	0.78
1:D:99[A]:LYS:HZ3	1:D:103:ASN:HD21	1.31	0.78
1:C:64:LEU:HD22	1:C:265[B]:LEU:CD2	2.14	0.77
1:B:99:LYS:HD3	6:B:485:HOH:O	1.83	0.77
1:B:77:GLN:HE21	1:B:113:TRP:HE1	1.29	0.77
1:D:233:HIS:HD2	1:D:267[A]:ILE:HG22	1.50	0.76
1:C:280:HIS:CE1	6:C:429:HOH:O	2.24	0.76
1:D:64:LEU:HD22	1:D:265[A]:LEU:HD22	1.66	0.76
1:C:199[A]:GLN:CD	1:D:99[A]:LYS:HZ1	1.89	0.75
6:A:518:HOH:O	1:B:260:THR:HG21	1.85	0.74
1:D:158:GLN:HE22	1:D:217:GLU:HA	1.53	0.74
1:A:231[B]:GLU:HB3	1:A:236[B]:CYS:SG	2.28	0.74
1:C:227:ARG:HH21	1:D:107[A]:GLN:HE22	1.36	0.73
1:C:64:LEU:HD22	1:C:265[B]:LEU:HD22	1.71	0.72
1:A:112:SER:OG	1:A:115[B]:GLU:HG2	1.91	0.69
1:A:191:LYS:HD3	1:A:227:ARG:HG3	1.72	0.69
1:D:137:LYS:HD3	6:D:578:HOH:O	1.91	0.69
1:A:191:LYS:HE2	1:A:200:PRO:HB3	1.75	0.69
1:C:151[B]:GLN:NE2	6:C:422:HOH:O	2.25	0.68
1:D:191:LYS:HD3	1:D:227:ARG:HG3	1.76	0.68
1:B:153[A]:GLU:HG2	1:B:185:LEU:HD23	1.78	0.66
1:C:279[A]:ASN:HD22	1:C:280:HIS:HD2	1.43	0.66
1:C:53:THR:HG23	1:C:53:THR:O	1.96	0.66
1:B:191:LYS:HD3	1:B:227:ARG:CG	2.25	0.65
1:D:274:HIS:HE1	6:D:346:HOH:O	1.79	0.65
1:A:273:SER:OG	1:A:274[A]:HIS:CD2	2.50	0.65

Continued on next page...

Continued from previous page...

Atom-1	Atom-2	Interatomic distance (Å)	Clash overlap (Å)
1:C:51:SER:OG	1:C:53:THR:HG22	1.97	0.65
1:A:233:HIS:HD2	1:A:267[A]:ILE:HG22	1.60	0.64
1:D:172[B]:LEU:HD12	1:D:172[B]:LEU:N	2.12	0.64
1:D:182:SER:OG	1:D:210:HIS:HD2	1.80	0.64
1:A:229:HIS:ND1	6:A:570:HOH:O	2.30	0.64
1:C:133[A]:THR:CG2	6:C:397:HOH:O	2.25	0.62
1:B:192:SER:HB2	6:B:580:HOH:O	1.99	0.62
1:D:172[B]:LEU:CD1	1:D:222:TYR:CD1	2.83	0.61
1:A:102:LEU:HD12	1:A:265[A]:LEU:HD21	1.81	0.61
1:A:64:LEU:HD22	1:A:265[A]:LEU:CD2	2.31	0.61
1:C:260[A]:THR:HG21	6:C:565:HOH:O	1.99	0.61
1:A:280[B]:HIS:HD2	1:A:282:GLN:H	1.47	0.60
1:D:180[A]:GLU:OE2	1:D:210:HIS:HE1	1.84	0.60
1:A:233:HIS:HD2	1:A:267[A]:ILE:CG2	2.14	0.59
1:A:234:GLU:OE2	1:A:267[A]:ILE:CD1	2.51	0.59
1:B:158:GLN:HE22	1:B:217:GLU:HA	1.66	0.58
1:D:228[A]:GLU:O	1:D:228[A]:GLU:HG3	2.03	0.58
1:D:135[A]:ASN:ND2	6:D:436:HOH:O	2.36	0.58
1:A:99[B]:LYS:HZ1	1:B:199:GLN:HG2	1.67	0.58
1:D:233:HIS:CD2	1:D:267[A]:ILE:CG2	2.81	0.57
1:C:73[B]:LYS:HD3	6:C:535:HOH:O	2.03	0.57
1:C:260[B]:THR:HG22	6:D:303:HOH:O	2.05	0.57
1:D:99[A]:LYS:NZ	1:D:103:ASN:HD21	2.03	0.56
1:D:72[A]:GLN:NE2	6:D:534:HOH:O	2.39	0.56
1:B:265:LEU:HD12	1:B:265:LEU:O	2.06	0.56
1:D:234:GLU:OE2	1:D:267[A]:ILE:CD1	2.54	0.56
1:A:50:LEU:HD21	1:A:242:THR:HG21	1.87	0.55
1:D:191:LYS:HE2	1:D:200:PRO:CB	2.34	0.55
1:A:102:LEU:CD1	1:A:265[A]:LEU:HD21	2.36	0.55
1:A:273:SER:OG	1:A:274[A]:HIS:HD2	1.90	0.54
1:C:246[B]:ARG:HG3	1:C:247:TYR:N	2.18	0.54
1:C:37[B]:GLN:NE2	6:C:411:HOH:O	2.40	0.53
1:D:151[B]:GLN:HG2	1:D:206:GLU:OE2	2.09	0.53
1:C:199[A]:GLN:CD	1:D:99[A]:LYS:NZ	2.59	0.53
1:B:229:HIS:ND1	6:B:421:HOH:O	2.33	0.53
1:D:102:LEU:HD12	1:D:265[A]:LEU:HD21	1.91	0.53
1:C:64:LEU:CD2	1:C:265[B]:LEU:HD22	2.37	0.53
1:A:72[A]:GLN:HG2	6:A:358:HOH:O	2.08	0.52
1:B:199:GLN:HG3	1:B:200:PRO:HD2	1.91	0.52
1:C:153[B]:GLU:HG2	6:C:558:HOH:O	2.09	0.52
1:A:44[B]:ASN:HD22	1:A:235:GLN:HE22	1.58	0.52

Continued on next page...

Continued from previous page...

Atom-1	Atom-2	Interatomic distance (Å)	Clash overlap (Å)
1:D:153:GLU:HG3	6:D:519:HOH:O	2.09	0.51
1:D:230[B]:ASN:C	1:D:230[B]:ASN:HD22	2.12	0.51
1:C:263:GLY:O	1:C:265[A]:LEU:HD12	2.11	0.51
1:A:40:PRO:HA	1:A:91:ASN:HD22	1.75	0.51
1:B:183:GLU:HA	1:D:146[B]:PRO:HG2	1.93	0.51
1:B:153[A]:GLU:CG	1:B:185:LEU:HD23	2.40	0.51
1:A:44[B]:ASN:HD22	1:A:235:GLN:NE2	2.09	0.50
1:D:180[A]:GLU:OE2	1:D:210:HIS:CE1	2.64	0.50
1:D:82[B]:GLU:HG3	1:D:281:ASN:HD22	1.77	0.49
1:C:191:LYS:HE2	1:C:200:PRO:HB3	1.94	0.49
1:C:57:GLN:HG3	1:C:275:GLN:O	2.13	0.49
1:B:265:LEU:HD12	1:B:265:LEU:C	2.33	0.49
1:A:191:LYS:HE2	1:A:200:PRO:CB	2.41	0.48
1:B:110:PHE:HE1	1:B:119[B]:ARG:HD2	1.78	0.48
1:A:64:LEU:CD2	1:A:265[A]:LEU:HD22	2.39	0.48
1:A:146:PRO:HB3	6:B:535:HOH:O	2.13	0.48
1:A:233:HIS:CD2	1:A:267[A]:ILE:CG2	2.97	0.48
1:D:66[A]:GLU:OE1	6:D:395:HOH:O	2.16	0.47
1:C:199[A]:GLN:NE2	1:D:99[A]:LYS:NZ	2.63	0.47
1:A:112:SER:HG	1:A:115[B]:GLU:HG2	1.79	0.47
1:B:151[A]:GLN:HE21	1:C:148:VAL:HG12	1.80	0.47
1:D:64:LEU:CD2	1:D:265[A]:LEU:HD22	2.41	0.47
1:C:119[A]:ARG:HG2	6:C:563:HOH:O	2.15	0.46
1:B:73:LYS:HD2	6:B:533:HOH:O	2.15	0.46
1:C:53:THR:CG2	1:C:53:THR:O	2.63	0.46
1:D:50:LEU:HD21	1:D:242:THR:HG21	1.98	0.45
1:B:191:LYS:HE2	1:B:200:PRO:HB3	1.98	0.45
1:D:122:HIS:HD2	1:D:123:ASP:OD1	1.99	0.44
1:A:159:ASP:OD1	6:A:511:HOH:O	2.21	0.44
1:A:66[B]:GLU:OE1	6:A:561:HOH:O	2.16	0.44
1:D:233:HIS:HB3	1:D:259:TYR:CE2	2.52	0.44
1:B:231:GLU:HG2	6:B:421:HOH:O	2.18	0.44
1:C:227:ARG:HH21	1:D:107[A]:GLN:HE21	1.58	0.44
1:C:252[A]:SER:OG	2:C:288:PO4:O4	2.29	0.44
1:C:252[A]:SER:HG	2:C:288:PO4:P	2.40	0.44
1:C:191:LYS:HE3	1:D:107[B]:GLN:HE22	1.83	0.43
1:D:102:LEU:CD1	1:D:265[A]:LEU:HD21	2.47	0.43
1:A:231[A]:GLU:HG2	1:A:235:GLN:HB2	2.01	0.43
1:A:234:GLU:CD	1:A:267[A]:ILE:CD1	2.87	0.43
1:C:73[A]:LYS:O	1:D:161:GLU:HG3	2.19	0.43
1:C:153[B]:GLU:H	1:C:153[B]:GLU:HG2	1.66	0.43

Continued on next page...

Continued from previous page...

Atom-1	Atom-2	Interatomic distance (Å)	Clash overlap (Å)
1:A:99[B]:LYS:HZ1	1:B:199:GLN:CD	2.21	0.43
1:D:274:HIS:CE1	6:D:346:HOH:O	2.62	0.43
1:C:119[B]:ARG:HG2	6:C:563:HOH:O	2.18	0.43
1:C:245[B]:MSE:CG	6:C:356:HOH:O	2.24	0.43
1:B:183:GLU:OE1	1:B:216[B]:ARG:NH2	2.52	0.42
1:B:158:GLN:HE22	1:B:217:GLU:CA	2.31	0.42
1:C:252[A]:SER:OG	2:C:288:PO4:P	2.77	0.42
1:C:279[A]:ASN:H	1:C:279[A]:ASN:ND2	2.17	0.42
1:C:279[A]:ASN:ND2	1:C:280:HIS:HD2	2.14	0.42
1:C:69:TRP:CE2	1:C:116:VAL:HG21	2.55	0.42
1:C:148:VAL:HG11	1:C:282[A]:GLN:HG3	2.02	0.41
1:D:107[A]:GLN:NE2	6:D:572:HOH:O	2.53	0.41
1:C:135[B]:ASN:ND2	6:C:417:HOH:O	2.21	0.41
1:A:111:ALA:HB3	1:A:115[B]:GLU:HG3	2.02	0.41
1:B:182:SER:O	1:D:146[B]:PRO:HG2	2.21	0.41
1:C:169:ASP:OD2	1:C:246[A]:ARG:NH1	2.51	0.41
1:A:280[B]:HIS:CD2	1:A:282:GLN:OE1	2.74	0.41
1:B:263:GLY:N	5:B:291:POP:O3	2.55	0.40
1:B:69:TRP:CE2	1:B:116:VAL:HG21	2.56	0.40
1:C:192:SER:HB2	6:C:569:HOH:O	2.21	0.40

All (1) symmetry-related close contacts are listed below. The label for Atom-2 includes the symmetry operator and encoded unit-cell translations to be applied.

Atom-1	Atom-2	Interatomic distance (Å)	Clash overlap (Å)
1:B:166[B]:GLU:OE1	6:C:439:HOH:O[1_666]	2.18	0.02

5.3 Torsion angles [i](#)

5.3.1 Protein backbone [i](#)

In the following table, the Percentiles column shows the percent Ramachandran outliers of the chain as a percentile score with respect to all X-ray entries followed by that with respect to entries of similar resolution.

The Analysed column shows the number of residues for which the backbone conformation was analysed, and the total number of residues.

Mol	Chain	Analysed	Favoured	Allowed	Outliers	Percentiles
1	A	284/290 (98%)	273 (96%)	11 (4%)	0	100 100

Continued on next page...

Continued from previous page...

Mol	Chain	Analysed	Favoured	Allowed	Outliers	Percentiles	
1	B	275/290 (95%)	272 (99%)	3 (1%)	0	100	100
1	C	283/290 (98%)	279 (99%)	4 (1%)	0	100	100
1	D	281/290 (97%)	269 (96%)	12 (4%)	0	100	100
All	All	1123/1160 (97%)	1093 (97%)	30 (3%)	0	100	100

There are no Ramachandran outliers to report.

5.3.2 Protein sidechains [i](#)

In the following table, the Percentiles column shows the percent sidechain outliers of the chain as a percentile score with respect to all X-ray entries followed by that with respect to entries of similar resolution.

The Analysed column shows the number of residues for which the sidechain conformation was analysed, and the total number of residues.

Mol	Chain	Analysed	Rotameric	Outliers	Percentiles	
1	A	258/250 (103%)	245 (95%)	13 (5%)	24	3
1	B	250/250 (100%)	245 (98%)	5 (2%)	55	24
1	C	259/250 (104%)	249 (96%)	10 (4%)	32	6
1	D	255/250 (102%)	243 (95%)	12 (5%)	26	3
All	All	1022/1000 (102%)	982 (96%)	40 (4%)	38	6

All (40) residues with a non-rotameric sidechain are listed below:

Mol	Chain	Res	Type
1	A	33	PRO
1	A	51	SER
1	A	53	THR
1	A	98	PHE
1	A	151[A]	GLN
1	A	151[B]	GLN
1	A	173[A]	GLN
1	A	173[B]	GLN
1	A	179[A]	GLU
1	A	179[B]	GLU
1	A	193	ASN
1	A	228	GLU
1	A	230	ASN

Continued on next page...

Continued from previous page...

Mol	Chain	Res	Type
1	B	46	ASN
1	B	98	PHE
1	B	192	SER
1	B	199	GLN
1	B	229	HIS
1	C	46	ASN
1	C	98	PHE
1	C	173	GLN
1	C	192	SER
1	C	265[A]	LEU
1	C	265[B]	LEU
1	C	279[A]	ASN
1	C	279[B]	ASN
1	C	282[A]	GLN
1	C	282[B]	GLN
1	D	51	SER
1	D	72[A]	GLN
1	D	72[B]	GLN
1	D	98	PHE
1	D	135[A]	ASN
1	D	135[B]	ASN
1	D	173[A]	GLN
1	D	173[B]	GLN
1	D	199	GLN
1	D	228[A]	GLU
1	D	228[B]	GLU
1	D	249	GLN

Some sidechains can be flipped to improve hydrogen bonding and reduce clashes. All (25) such sidechains are listed below:

Mol	Chain	Res	Type
1	A	91	ASN
1	A	275	GLN
1	A	279	ASN
1	B	30	GLN
1	B	46	ASN
1	B	57	GLN
1	B	77	GLN
1	B	103	ASN
1	B	158	GLN
1	B	164	ASN
1	B	173	GLN

Continued on next page...

Continued from previous page...

Mol	Chain	Res	Type
1	C	30	GLN
1	C	46	ASN
1	C	164	ASN
1	C	177	GLN
1	C	193	ASN
1	C	280	HIS
1	D	103	ASN
1	D	122	HIS
1	D	158	GLN
1	D	177	GLN
1	D	193	ASN
1	D	210	HIS
1	D	233	HIS
1	D	274	HIS

5.3.3 RNA [i](#)

There are no RNA molecules in this entry.

5.4 Non-standard residues in protein, DNA, RNA chains [i](#)

There are no non-standard protein/DNA/RNA residues in this entry.

5.5 Carbohydrates [i](#)

There are no carbohydrates in this entry.

5.6 Ligand geometry [i](#)

Of 14 ligands modelled in this entry, 2 are monoatomic - leaving 12 for Mogul analysis.

In the following table, the Counts columns list the number of bonds (or angles) for which Mogul statistics could be retrieved, the number of bonds (or angles) that are observed in the model and the number of bonds (or angles) that are defined in the Chemical Component Dictionary. The Link column lists molecule types, if any, to which the group is linked. The Z score for a bond length (or angle) is the number of standard deviations the observed value is removed from the expected value. A bond length (or angle) with $|Z| > 2$ is considered an outlier worth inspection. RMSZ is the root-mean-square of all Z scores of the bond lengths (or angles).

Mol	Type	Chain	Res	Link	Bond lengths			Bond angles		
					Counts	RMSZ	# Z > 2	Counts	RMSZ	# Z > 2
2	PO4	B	288	-	4,4,4	1.01	0	6,6,6	2.37	2 (33%)
2	PO4	D	288	-	4,4,4	1.09	0	6,6,6	0.68	0
4	GUN	D	290	-	9,12,12	1.93	2 (22%)	8,17,17	3.00	5 (62%)
4	GUN	C	290	-	9,12,12	1.39	2 (22%)	8,17,17	3.36	5 (62%)
2	PO4	C	289	-	4,4,4	1.12	0	6,6,6	0.60	0
4	GUN	B	290	-	9,12,12	1.75	2 (22%)	8,17,17	3.28	6 (75%)
2	PO4	B	289	-	4,4,4	0.91	0	6,6,6	0.79	0
4	GUN	A	290	-	9,12,12	2.02	2 (22%)	8,17,17	3.56	6 (75%)
2	PO4	A	288	-	4,4,4	0.86	0	6,6,6	0.80	0
2	PO4	C	288	-	4,4,4	1.22	0	6,6,6	2.32	3 (50%)
5	POP	B	291	-	6,8,8	0.69	0	13,13,13	1.80	2 (15%)
5	POP	C	291	-	6,8,8	0.75	0	13,13,13	1.94	3 (23%)

In the following table, the Chirals column lists the number of chiral outliers, the number of chiral centers analysed, the number of these observed in the model and the number defined in the Chemical Component Dictionary. Similar counts are reported in the Torsion and Rings columns. '-' means no outliers of that kind were identified.

Mol	Type	Chain	Res	Link	Chirals	Torsions	Rings
4	GUN	D	290	-	-	-	0/2/2/2
4	GUN	C	290	-	-	-	0/2/2/2
4	GUN	B	290	-	-	-	0/2/2/2
4	GUN	A	290	-	-	-	0/2/2/2
5	POP	B	291	-	-	2/6/6/6	-
5	POP	C	291	-	-	3/6/6/6	-

All (8) bond length outliers are listed below:

Mol	Chain	Res	Type	Atoms	Z	Observed(Å)	Ideal(Å)
4	A	290	GUN	C6-N1	4.77	1.41	1.33
4	D	290	GUN	C6-N1	4.62	1.41	1.33
4	B	290	GUN	C6-N1	3.74	1.39	1.33
4	A	290	GUN	C2-N1	3.60	1.41	1.35
4	D	290	GUN	C2-N1	3.45	1.41	1.35
4	B	290	GUN	C2-N1	3.38	1.41	1.35
4	C	290	GUN	C6-N1	3.14	1.38	1.33
4	C	290	GUN	C2-N1	2.30	1.39	1.35

All (32) bond angle outliers are listed below:

Mol	Chain	Res	Type	Atoms	Z	Observed(°)	Ideal(°)
4	A	290	GUN	N3-C2-N1	-5.86	119.40	127.22
4	A	290	GUN	C2-N3-C4	5.63	121.79	115.36
5	B	291	POP	P2-O-P1	-5.44	114.17	132.83
5	C	291	POP	P2-O-P1	-5.29	114.68	132.83
4	B	290	GUN	C5-C6-N1	-5.11	116.44	123.43
4	C	290	GUN	C5-C6-N1	-4.94	116.67	123.43
4	C	290	GUN	N3-C2-N1	-4.73	120.92	127.22
4	B	290	GUN	N3-C2-N1	-4.62	121.05	127.22
4	D	290	GUN	N3-C2-N1	-4.57	121.12	127.22
2	B	288	PO4	O4-P-O3	-4.35	93.99	107.97
4	D	290	GUN	C2-N3-C4	4.31	120.28	115.36
2	C	288	PO4	O4-P-O1	-4.10	95.89	110.89
4	D	290	GUN	C5-C6-N1	-4.00	117.95	123.43
4	C	290	GUN	C6-N1-C2	3.76	121.91	115.93
4	A	290	GUN	C5-C6-N1	-3.69	118.39	123.43
4	C	290	GUN	N2-C2-N3	3.49	123.48	117.79
4	B	290	GUN	C6-N1-C2	3.45	121.42	115.93
4	B	290	GUN	C2-N3-C4	3.44	119.29	115.36
4	C	290	GUN	C2-N3-C4	3.25	119.07	115.36
4	B	290	GUN	N2-C2-N3	3.00	122.69	117.79
5	C	291	POP	O2-P1-O	2.78	113.95	104.64
2	B	288	PO4	O4-P-O2	2.61	116.34	107.97
2	C	288	PO4	O4-P-O3	2.57	116.22	107.97
4	A	290	GUN	C6-N1-C2	2.55	119.98	115.93
4	D	290	GUN	C6-N1-C2	2.47	119.84	115.93
4	D	290	GUN	C4-C5-N7	-2.43	106.87	109.40
5	C	291	POP	O6-P2-O	2.41	112.70	104.64
4	A	290	GUN	C4-C5-N7	-2.33	106.97	109.40
2	C	288	PO4	O4-P-O2	2.32	115.42	107.97
4	A	290	GUN	N2-C2-N3	2.31	121.55	117.79
5	B	291	POP	O6-P2-O	2.14	111.81	104.64
4	B	290	GUN	C4-C5-N7	-2.10	107.21	109.40

There are no chirality outliers.

All (5) torsion outliers are listed below:

Mol	Chain	Res	Type	Atoms
5	C	291	POP	P2-O-P1-O2
5	C	291	POP	P2-O-P1-O3
5	B	291	POP	P1-O-P2-O5
5	C	291	POP	P2-O-P1-O1
5	B	291	POP	P1-O-P2-O4

There are no ring outliers.

2 monomers are involved in 4 short contacts:

Mol	Chain	Res	Type	Clashes	Symm-Clashes
2	C	288	PO4	3	0
5	B	291	POP	1	0

5.7 Other polymers [i](#)

There are no such residues in this entry.

5.8 Polymer linkage issues [i](#)

There are no chain breaks in this entry.

6 Fit of model and data [i](#)

6.1 Protein, DNA and RNA chains [i](#)

In the following table, the column labelled ‘#RSRZ> 2’ contains the number (and percentage) of RSRZ outliers, followed by percent RSRZ outliers for the chain as percentile scores relative to all X-ray entries and entries of similar resolution. The OWAB column contains the minimum, median, 95th percentile and maximum values of the occupancy-weighted average B-factor per residue. The column labelled ‘Q< 0.9’ lists the number of (and percentage) of residues with an average occupancy less than 0.9.

Mol	Chain	Analysed	<RSRZ>	#RSRZ>2	OWAB(Å ²)	Q<0.9
1	A	251/290 (86%)	0.01	15 (5%) 21 25	10, 17, 36, 51	0
1	B	250/290 (86%)	-0.12	6 (2%) 59 64	10, 16, 33, 42	0
1	C	250/290 (86%)	-0.12	7 (2%) 53 59	10, 16, 32, 42	0
1	D	252/290 (86%)	0.06	19 (7%) 14 16	10, 18, 39, 47	0
All	All	1003/1160 (86%)	-0.04	47 (4%) 31 36	10, 17, 35, 51	0

All (47) RSRZ outliers are listed below:

Mol	Chain	Res	Type	RSRZ
1	D	28	ALA	5.6
1	A	27	TYR	5.4
1	B	52	ALA	5.2
1	D	27	TYR	5.2
1	C	199[A]	GLN	4.9
1	D	230[A]	ASN	4.8
1	A	50	LEU	4.8
1	A	53	THR	4.6
1	D	52	ALA	4.2
1	D	229	HIS	4.1
1	D	51	SER	4.0
1	A	193	ASN	4.0
1	D	53	THR	3.9
1	D	50	LEU	3.9
1	D	49	HIS	3.7
1	C	29	ASN	3.5
1	A	28	ALA	3.4
1	B	230	ASN	3.4
1	D	199	GLN	3.3
1	C	230	ASN	3.2
1	A	44[A]	ASN	3.1

Continued on next page...

Continued from previous page...

Mol	Chain	Res	Type	RSRZ
1	A	230	ASN	3.1
1	A	231[A]	GLU	3.1
1	A	51	SER	3.0
1	C	52	ALA	3.0
1	B	199	GLN	2.9
1	A	49	HIS	2.9
1	D	44	ASN	2.8
1	C	229[A]	HIS	2.7
1	D	46	ASN	2.6
1	A	46[A]	ASN	2.6
1	A	229	HIS	2.5
1	D	193	ASN	2.5
1	D	200	PRO	2.4
1	B	193	ASN	2.4
1	A	177[A]	GLN	2.4
1	C	51	SER	2.3
1	D	43	LEU	2.3
1	B	29	ASN	2.2
1	A	29[A]	ASN	2.2
1	B	228	GLU	2.2
1	C	193	ASN	2.1
1	D	279	ASN	2.1
1	A	52	ALA	2.1
1	D	47[A]	ASP	2.1
1	D	177	GLN	2.0
1	D	29	ASN	2.0

6.2 Non-standard residues in protein, DNA, RNA chains [\(i\)](#)

There are no non-standard protein/DNA/RNA residues in this entry.

6.3 Carbohydrates [\(i\)](#)

There are no carbohydrates in this entry.

6.4 Ligands [\(i\)](#)

In the following table, the Atoms column lists the number of modelled atoms in the group and the number defined in the chemical component dictionary. The B-factors column lists the minimum, median, 95th percentile and maximum values of B factors of atoms in the group. The column labelled 'Q< 0.9' lists the number of atoms with occupancy less than 0.9.

Mol	Type	Chain	Res	Atoms	RSCC	RSR	B-factors(\AA^2)	Q<0.9
5	POP	C	291	9/9	0.83	0.19	34,35,37,37	9
2	PO4	C	288	5/5	0.88	0.13	17,21,27,29	1
5	POP	B	291	9/9	0.88	0.15	37,38,39,40	9
2	PO4	B	288	5/5	0.89	0.14	17,20,27,30	1
4	GUN	D	290	11/11	0.93	0.14	17,19,21,22	0
4	GUN	B	290	11/11	0.94	0.12	15,18,19,20	0
2	PO4	B	289	5/5	0.96	0.09	24,24,32,33	1
4	GUN	A	290	11/11	0.96	0.10	18,20,22,22	0
4	GUN	C	290	11/11	0.97	0.11	15,17,19,21	0
2	PO4	C	289	5/5	0.97	0.09	23,24,32,32	1
3	MG	D	289	1/1	0.97	0.29	37,37,37,37	0
2	PO4	D	288	5/5	0.99	0.07	18,19,23,24	0
3	MG	A	289	1/1	0.99	0.16	35,35,35,35	0
2	PO4	A	288	5/5	0.99	0.06	18,19,25,25	0

6.5 Other polymers [i](#)

There are no such residues in this entry.