



Full wwPDB X-ray Structure Validation Report ⓘ

Sep 26, 2023 – 05:41 AM EDT

PDB ID : 6BQH
Title : Crystal structure of 5-HT_{2C} in complex with ritanserin
Authors : Peng, Y.; McCorvy, J.D.; Harpoe, K.; Lansu, K.; Yuan, S.; Popov, P.; Qu, L.; Pu, M.; Che, T.; Nikolajse, L.F.; Huang, X.P.; Wu, Y.; Shen, L.; Bjorn-Yoshimoto, W.E.; Ding, K.; Wacker, D.; Han, G.W.; Cheng, J.; Katritch, V.; Jensen, A.A.; Hanson, M.A.; Zhao, S.; Gloriam, D.E.; Roth, B.L.; Stevens, R.C.; Liu, Z.
Deposited on : 2017-11-27
Resolution : 2.70 Å(reported)

This is a Full wwPDB X-ray Structure Validation Report for a publicly released PDB entry.

We welcome your comments at validation@mail.wwpdb.org

A user guide is available at

<https://www.wwpdb.org/validation/2017/XrayValidationReportHelp>

with specific help available everywhere you see the ⓘ symbol.

The types of validation reports are described at

<http://www.wwpdb.org/validation/2017/FAQs#types>.

The following versions of software and data (see [references ⓘ](#)) were used in the production of this report:

MolProbity : 4.02b-467
Mogul : 1.8.5 (274361), CSD as541be (2020)
Xtriage (Phenix) : 1.13
EDS : 2.35.1
buster-report : 1.1.7 (2018)
Percentile statistics : 20191225.v01 (using entries in the PDB archive December 25th 2019)
Refmac : 5.8.0158
CCP4 : 7.0.044 (Gargrove)
Ideal geometry (proteins) : Engh & Huber (2001)

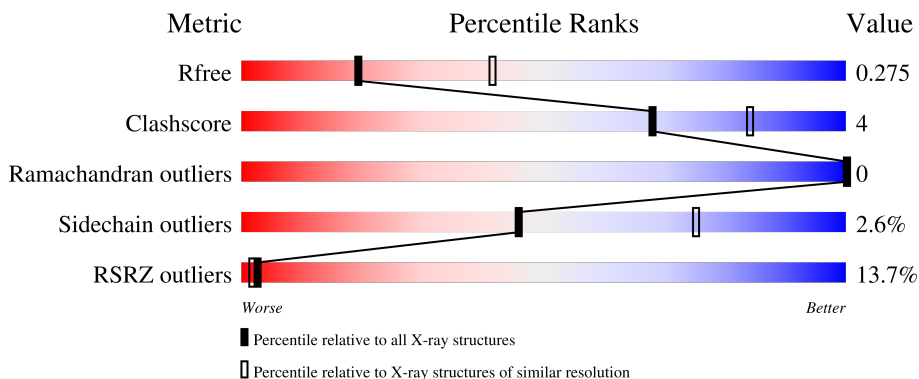
1 Overall quality at a glance

The following experimental techniques were used to determine the structure:

X-RAY DIFFRACTION

The reported resolution of this entry is 2.70 Å.

Percentile scores (ranging between 0-100) for global validation metrics of the entry are shown in the following graphic. The table shows the number of entries on which the scores are based.



Metric	Whole archive (#Entries)	Similar resolution (#Entries, resolution range(Å))
R_{free}	130704	2808 (2.70-2.70)
Clashscore	141614	3122 (2.70-2.70)
Ramachandran outliers	138981	3069 (2.70-2.70)
Sidechain outliers	138945	3069 (2.70-2.70)
RSRZ outliers	127900	2737 (2.70-2.70)

The table below summarises the geometric issues observed across the polymeric chains and their fit to the electron density. The red, orange, yellow and green segments of the lower bar indicate the fraction of residues that contain outliers for ≥ 3 , 2, 1 and 0 types of geometric quality criteria respectively. A grey segment represents the fraction of residues that are not modelled. The numeric value for each fraction is indicated below the corresponding segment, with a dot representing fractions $\leq 5\%$. The upper red bar (where present) indicates the fraction of residues that have poor fit to the electron density. The numeric value is given above the bar.

Mol	Chain	Length	Quality of chain
1	A	452	

Ideal geometry (DNA, RNA) : Parkinson et al. (1996)
 Validation Pipeline (wwPDB-VP) : 2.35.1

2 Entry composition [i](#)

There are 6 unique types of molecules in this entry. The entry contains 2815 atoms, of which 0 are hydrogens and 0 are deuteriums.

In the tables below, the ZeroOcc column contains the number of atoms modelled with zero occupancy, the AltConf column contains the number of residues with at least one atom in alternate conformation and the Trace column contains the number of residues modelled with at most 2 atoms.

- Molecule 1 is a protein called 5-hydroxytryptamine receptor 2C,Soluble cytochrome b562.

Mol	Chain	Residues	Atoms					ZeroOcc	AltConf	Trace
			Total	C	N	O	S			
1	A	351	2657	1750	431	456	20	0	0	0

There are 51 discrepancies between the modelled and reference sequences:

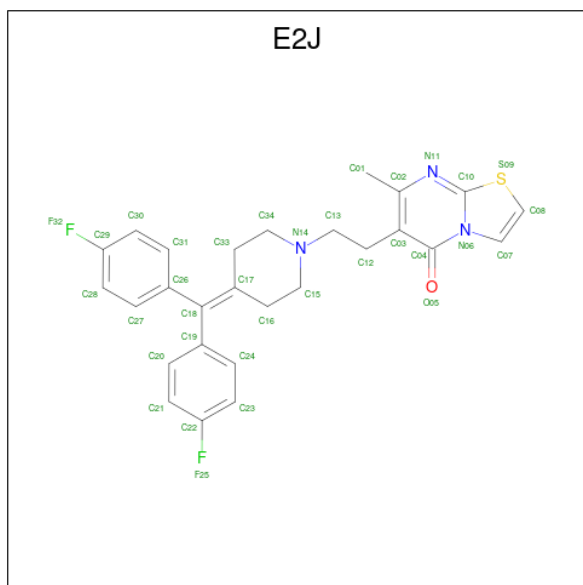
Chain	Residue	Modelled	Actual	Comment	Reference
A	14	MET	-	expression tag	UNP P28335
A	15	LYS	-	expression tag	UNP P28335
A	16	THR	-	expression tag	UNP P28335
A	17	ILE	-	expression tag	UNP P28335
A	18	ILE	-	expression tag	UNP P28335
A	19	ALA	-	expression tag	UNP P28335
A	20	LEU	-	expression tag	UNP P28335
A	21	SER	-	expression tag	UNP P28335
A	22	TYR	-	expression tag	UNP P28335
A	23	ILE	-	expression tag	UNP P28335
A	24	PHE	-	expression tag	UNP P28335
A	25	CYS	-	expression tag	UNP P28335
A	26	LEU	-	expression tag	UNP P28335
A	27	VAL	-	expression tag	UNP P28335
A	28	PHE	-	expression tag	UNP P28335
A	29	ALA	-	expression tag	UNP P28335
A	30	ASP	-	expression tag	UNP P28335
A	31	TYR	-	expression tag	UNP P28335
A	32	LYS	-	expression tag	UNP P28335
A	33	ASP	-	expression tag	UNP P28335
A	34	ASP	-	expression tag	UNP P28335
A	35	ASP	-	expression tag	UNP P28335
A	36	ASP	-	expression tag	UNP P28335
A	37	GLY	-	expression tag	UNP P28335
A	38	ALA	-	expression tag	UNP P28335
A	39	PRO	-	expression tag	UNP P28335
A	1007	TRP	MET	engineered mutation	UNP P0ABE7

Continued on next page...

Continued from previous page...

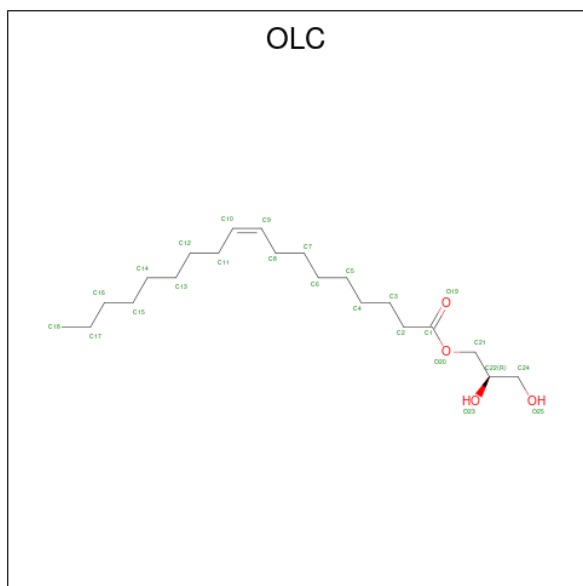
Chain	Residue	Modelled	Actual	Comment	Reference
A	1102	ILE	HIS	engineered mutation	UNP P0ABE7
A	1106	LEU	ARG	engineered mutation	UNP P0ABE7
A	360	ASN	CYS	conflict	UNP P28335
A	394	GLY	-	expression tag	UNP P28335
A	395	ARG	-	expression tag	UNP P28335
A	396	PRO	-	expression tag	UNP P28335
A	397	LEU	-	expression tag	UNP P28335
A	398	GLU	-	expression tag	UNP P28335
A	399	VAL	-	expression tag	UNP P28335
A	400	LEU	-	expression tag	UNP P28335
A	401	PHE	-	expression tag	UNP P28335
A	402	GLN	-	expression tag	UNP P28335
A	403	GLY	-	expression tag	UNP P28335
A	404	PRO	-	expression tag	UNP P28335
A	405	HIS	-	expression tag	UNP P28335
A	406	HIS	-	expression tag	UNP P28335
A	407	HIS	-	expression tag	UNP P28335
A	408	HIS	-	expression tag	UNP P28335
A	409	HIS	-	expression tag	UNP P28335
A	410	HIS	-	expression tag	UNP P28335
A	411	HIS	-	expression tag	UNP P28335
A	412	HIS	-	expression tag	UNP P28335
A	413	HIS	-	expression tag	UNP P28335
A	414	HIS	-	expression tag	UNP P28335

- Molecule 2 is 6-(2-{4-[bis(4-fluorophenyl)methylidene]piperidin-1-yl}ethyl)-7-methyl-5H-[1,3]thiazolo[3,2-a]pyrimidin-5-one (three-letter code: E2J) (formula: C₂₇H₂₅F₂N₃OS) (labeled as "Ligand of Interest" by depositor).



Mol	Chain	Residues	Atoms					ZeroOcc	AltConf	
			Total	C	F	N	O			S
2	A	1	34	27	2	3	1	1	0	0

- Molecule 3 is (2R)-2,3-dihydroxypropyl (9Z)-octadec-9-enoate (three-letter code: OLC) (formula: $C_{21}H_{40}O_4$).



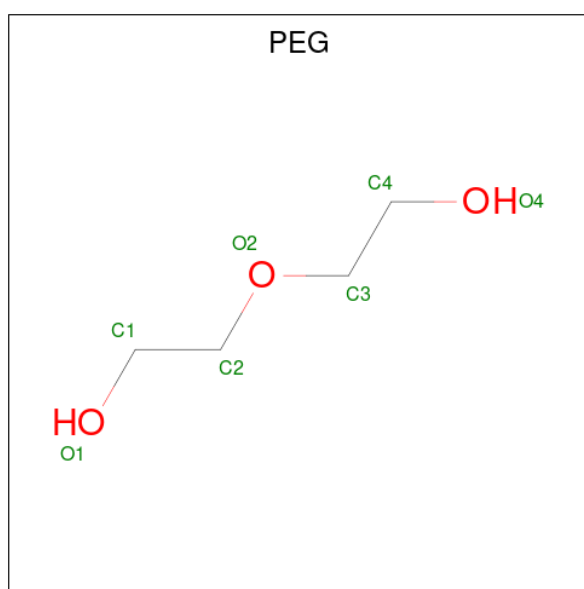
Mol	Chain	Residues	Atoms		ZeroOcc	AltConf
			Total	C O		
3	A	1	19	15 4	0	0
3	A	1	13	9 4	0	0

Continued on next page...

Continued from previous page...

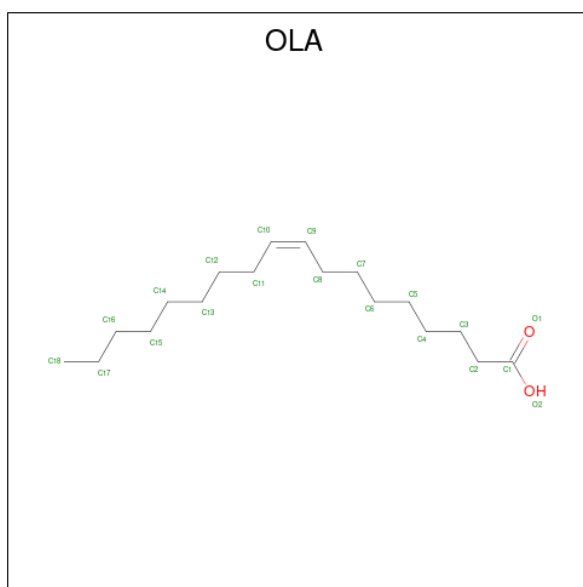
Mol	Chain	Residues	Atoms	ZeroOcc	AltConf
3	A	1	Total C O 15 11 4	0	0
3	A	1	Total C O 12 8 4	0	0
3	A	1	Total C O 14 10 4	0	0
3	A	1	Total C 7 7	0	0

- Molecule 4 is DI(HYDROXYETHYL)ETHER (three-letter code: PEG) (formula: C₄H₁₀O₃).



Mol	Chain	Residues	Atoms	ZeroOcc	AltConf
4	A	1	Total C O 7 4 3	0	0

- Molecule 5 is OLEIC ACID (three-letter code: OLA) (formula: C₁₈H₃₄O₂).



Mol	Chain	Residues	Atoms		ZeroOcc	AltConf
5	A	1	Total	C O	0	0
			16	14 2		
5	A	1	Total	C O	0	0
			17	15 2		

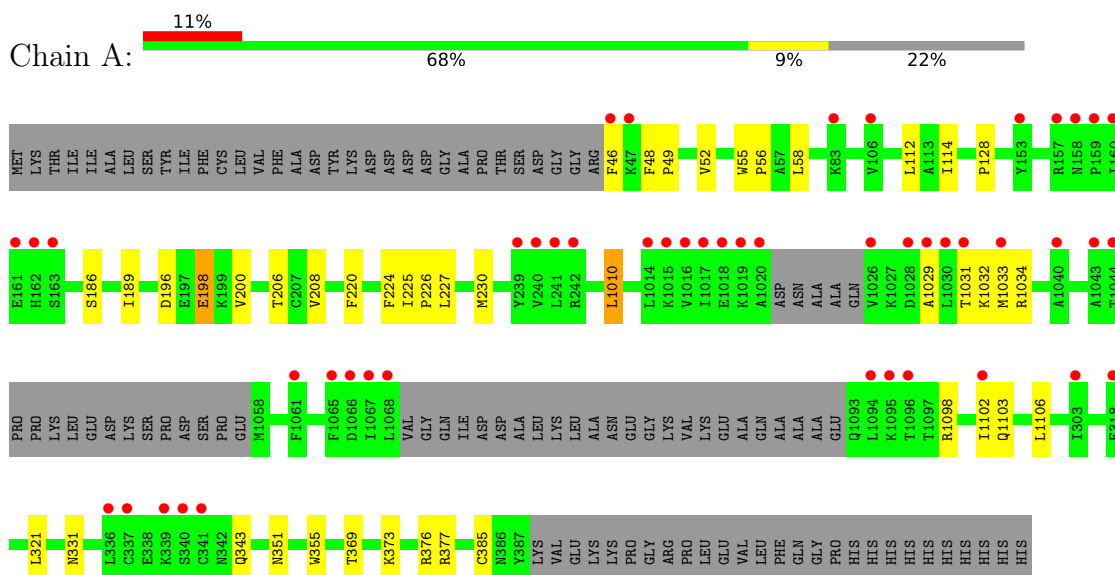
- Molecule 6 is water.

Mol	Chain	Residues	Atoms		ZeroOcc	AltConf
6	A	4	Total	O	0	0
			4	4		

3 Residue-property plots

These plots are drawn for all protein, RNA, DNA and oligosaccharide chains in the entry. The first graphic for a chain summarises the proportions of the various outlier classes displayed in the second graphic. The second graphic shows the sequence view annotated by issues in geometry and electron density. Residues are color-coded according to the number of geometric quality criteria for which they contain at least one outlier: green = 0, yellow = 1, orange = 2 and red = 3 or more. A red dot above a residue indicates a poor fit to the electron density ($RSRZ > 2$). Stretches of 2 or more consecutive residues without any outlier are shown as a green connector. Residues present in the sample, but not in the model, are shown in grey.

- Molecule 1: 5-hydroxytryptamine receptor 2C,Soluble cytochrome b562



4 Data and refinement statistics

Property	Value	Source
Space group	C 2 2 2	Depositor
Cell constants a, b, c, α , β , γ	88.31Å 97.05Å 150.23Å 90.00° 90.00° 90.00°	Depositor
Resolution (Å)	48.52 – 2.70 48.52 – 2.70	Depositor EDS
% Data completeness (in resolution range)	94.1 (48.52-2.70) 94.1 (48.52-2.70)	Depositor EDS
R_{merge}	0.08	Depositor
R_{sym}	(Not available)	Depositor
$\langle I/\sigma(I) \rangle$ ¹	2.10 (at 2.69Å)	Xtrriage
Refinement program	PHENIX (dev_2289: ???)	Depositor
R, R_{free}	0.253 , 0.275 0.253 , 0.275	Depositor DCC
R_{free} test set	856 reflections (5.02%)	wwPDB-VP
Wilson B-factor (Å ²)	87.4	Xtrriage
Anisotropy	0.084	Xtrriage
Bulk solvent k_{sol} (e/Å ³), B_{sol} (Å ²)	0.29 , 87.1	EDS
L-test for twinning ²	$\langle L \rangle = 0.48$, $\langle L^2 \rangle = 0.31$	Xtrriage
Estimated twinning fraction	No twinning to report.	Xtrriage
F_o, F_c correlation	0.94	EDS
Total number of atoms	2815	wwPDB-VP
Average B, all atoms (Å ²)	113.0	wwPDB-VP

Xtrriage's analysis on translational NCS is as follows: *The largest off-origin peak in the Patterson function is 6.79% of the height of the origin peak. No significant pseudotranslation is detected.*

¹Intensities estimated from amplitudes.

²Theoretical values of $\langle |L| \rangle$, $\langle L^2 \rangle$ for acentric reflections are 0.5, 0.333 respectively for untwinned datasets, and 0.375, 0.2 for perfectly twinned datasets.

5 Model quality [i](#)

5.1 Standard geometry [i](#)

Bond lengths and bond angles in the following residue types are not validated in this section: OLC, PEG, E2J, OLA

The Z score for a bond length (or angle) is the number of standard deviations the observed value is removed from the expected value. A bond length (or angle) with $|Z| > 5$ is considered an outlier worth inspection. RMSZ is the root-mean-square of all Z scores of the bond lengths (or angles).

Mol	Chain	Bond lengths		Bond angles	
		RMSZ	# Z >5	RMSZ	# Z >5
1	A	0.26	0/2712	0.39	0/3702

There are no bond length outliers.

There are no bond angle outliers.

There are no chirality outliers.

There are no planarity outliers.

5.2 Too-close contacts [i](#)

In the following table, the Non-H and H(model) columns list the number of non-hydrogen atoms and hydrogen atoms in the chain respectively. The H(added) column lists the number of hydrogen atoms added and optimized by MolProbity. The Clashes column lists the number of clashes within the asymmetric unit, whereas Symm-Clashes lists symmetry-related clashes.

Mol	Chain	Non-H	H(model)	H(added)	Clashes	Symm-Clashes
1	A	2657	0	2630	21	0
2	A	34	0	0	1	0
3	A	80	0	99	0	0
4	A	7	0	10	0	0
5	A	33	0	46	0	0
6	A	4	0	0	0	0
All	All	2815	0	2785	21	0

The all-atom clashscore is defined as the number of clashes found per 1000 atoms (including hydrogen atoms). The all-atom clashscore for this structure is 4.

All (21) close contacts within the same asymmetric unit are listed below, sorted by their clash magnitude.

Atom-1	Atom-2	Interatomic distance (Å)	Clash overlap (Å)
1:A:1103:GLN:HA	1:A:1106:LEU:HB3	1.83	0.60
1:A:220:PHE:HA	1:A:224:PHE:HB2	1.85	0.58
1:A:128:PRO:HG3	1:A:200:VAL:HG21	1.86	0.57
1:A:351:ASN:ND2	2:A:1201:E2J:S09	2.76	0.57
1:A:1098:ARG:HA	1:A:1102:ILE:HD13	1.89	0.54
1:A:186:SER:HA	1:A:189:ILE:HD12	1.91	0.52
1:A:1031:THR:HA	1:A:1034:ARG:HG2	1.91	0.52
1:A:52:VAL:HG11	1:A:55:TRP:CZ2	2.46	0.51
1:A:369:THR:HG23	1:A:376:ARG:HA	1.95	0.47
1:A:227:LEU:HD11	1:A:321:LEU:HD12	1.97	0.46
1:A:55:TRP:HZ3	1:A:58:LEU:HD22	1.82	0.45
1:A:46:PHE:HA	1:A:112:LEU:HD21	1.98	0.43
1:A:55:TRP:N	1:A:56:PRO:HD2	2.33	0.43
1:A:48:PHE:N	1:A:49:PRO:HA	2.34	0.43
1:A:196:ASP:OD1	1:A:198:GLU:HG2	2.19	0.43
1:A:1029:ALA:HA	1:A:1032:LYS:HB2	2.00	0.43
1:A:1010:LEU:HA	1:A:1033:MET:HG2	1.99	0.42
1:A:373:LYS:O	1:A:377:ARG:HB2	2.20	0.42
1:A:225:ILE:HB	1:A:226:PRO:HD3	2.02	0.42
1:A:227:LEU:O	1:A:230:MET:HG2	2.20	0.41
1:A:114:ILE:HD11	1:A:355:TRP:HE1	1.85	0.41

There are no symmetry-related clashes.

5.3 Torsion angles [i](#)

5.3.1 Protein backbone [i](#)

In the following table, the Percentiles column shows the percent Ramachandran outliers of the chain as a percentile score with respect to all X-ray entries followed by that with respect to entries of similar resolution.

The Analysed column shows the number of residues for which the backbone conformation was analysed, and the total number of residues.

Mol	Chain	Analysed	Favoured	Allowed	Outliers	Percentiles
1	A	343/452 (76%)	330 (96%)	13 (4%)	0	100 100

There are no Ramachandran outliers to report.

5.3.2 Protein sidechains [i](#)

In the following table, the Percentiles column shows the percent sidechain outliers of the chain as a percentile score with respect to all X-ray entries followed by that with respect to entries of similar resolution.

The Analysed column shows the number of residues for which the sidechain conformation was analysed, and the total number of residues.

Mol	Chain	Analysed	Rotameric	Outliers	Percentiles
1	A	272/397 (68%)	265 (97%)	7 (3%)	46 75

All (7) residues with a non-rotameric sidechain are listed below:

Mol	Chain	Res	Type
1	A	198	GLU
1	A	206	THR
1	A	208	VAL
1	A	1010	LEU
1	A	331	ASN
1	A	343	GLN
1	A	385	CYS

Sometimes sidechains can be flipped to improve hydrogen bonding and reduce clashes. There are no such sidechains identified.

5.3.3 RNA [i](#)

There are no RNA molecules in this entry.

5.4 Non-standard residues in protein, DNA, RNA chains [i](#)

There are no non-standard protein/DNA/RNA residues in this entry.

5.5 Carbohydrates [i](#)

There are no monosaccharides in this entry.

5.6 Ligand geometry [i](#)

10 ligands are modelled in this entry.

In the following table, the Counts columns list the number of bonds (or angles) for which Mogul statistics could be retrieved, the number of bonds (or angles) that are observed in the model and the number of bonds (or angles) that are defined in the Chemical Component Dictionary. The Link column lists molecule types, if any, to which the group is linked. The Z score for a bond length (or angle) is the number of standard deviations the observed value is removed from the expected value. A bond length (or angle) with $|Z| > 2$ is considered an outlier worth inspection. RMSZ is the root-mean-square of all Z scores of the bond lengths (or angles).

Mol	Type	Chain	Res	Link	Bond lengths			Bond angles		
					Counts	RMSZ	# Z > 2	Counts	RMSZ	# Z > 2
3	OLC	A	1202	-	18,18,24	0.28	0	18,19,25	0.23	0
3	OLC	A	1204	-	14,14,24	0.24	0	15,15,25	0.18	0
5	OLA	A	1210	-	16,16,19	0.62	0	16,16,19	1.02	0
3	OLC	A	1203	-	12,12,24	0.24	0	13,13,25	0.22	0
3	OLC	A	1206	-	13,13,24	0.23	0	14,14,25	0.24	0
3	OLC	A	1207	-	6,6,24	0.20	0	5,5,25	0.12	0
4	PEG	A	1208	-	6,6,6	0.47	0	5,5,5	0.27	0
5	OLA	A	1209	-	15,15,19	0.64	0	15,15,19	1.04	0
3	OLC	A	1205	-	11,11,24	0.23	0	12,12,25	0.17	0
2	E2J	A	1201	-	38,38,38	1.05	3 (7%)	49,54,54	2.95	18 (36%)

In the following table, the Chirals column lists the number of chiral outliers, the number of chiral centers analysed, the number of these observed in the model and the number defined in the Chemical Component Dictionary. Similar counts are reported in the Torsion and Rings columns. '-' means no outliers of that kind were identified.

Mol	Type	Chain	Res	Link	Chirals	Torsions	Rings
3	OLC	A	1202	-	-	1/18/18/24	-
3	OLC	A	1204	-	-	1/14/14/24	-
5	OLA	A	1210	-	-	8/14/14/17	-
3	OLC	A	1203	-	-	1/12/12/24	-
3	OLC	A	1206	-	-	7/13/13/24	-
3	OLC	A	1207	-	-	0/4/4/24	-
4	PEG	A	1208	-	-	2/4/4/4	-
5	OLA	A	1209	-	-	5/13/13/17	-
3	OLC	A	1205	-	-	0/11/11/24	-
2	E2J	A	1201	-	-	4/17/27/27	0/5/5/5

All (3) bond length outliers are listed below:

Mol	Chain	Res	Type	Atoms	Z	Observed(Å)	Ideal(Å)
2	A	1201	E2J	C02-N11	-3.10	1.32	1.39
2	A	1201	E2J	C04-N06	-2.92	1.37	1.44

Continued on next page...

Continued from previous page...

Mol	Chain	Res	Type	Atoms	Z	Observed(Å)	Ideal(Å)
2	A	1201	E2J	C08-S09	2.01	1.79	1.70

All (18) bond angle outliers are listed below:

Mol	Chain	Res	Type	Atoms	Z	Observed(°)	Ideal(°)
2	A	1201	E2J	C08-C07-N06	8.77	121.09	112.21
2	A	1201	E2J	S09-C10-N06	-8.19	103.55	110.53
2	A	1201	E2J	C08-S09-C10	6.07	97.12	89.74
2	A	1201	E2J	C07-C08-S09	-5.35	102.05	111.84
2	A	1201	E2J	C03-C02-N11	-5.12	118.73	123.18
2	A	1201	E2J	C12-C03-C02	-4.59	120.60	124.43
2	A	1201	E2J	C33-C17-C18	-4.39	119.86	124.15
2	A	1201	E2J	C01-C02-N11	4.20	119.16	112.53
2	A	1201	E2J	S09-C10-N11	4.06	132.26	123.07
2	A	1201	E2J	C19-C18-C17	-4.05	118.27	122.78
2	A	1201	E2J	C10-N11-C02	3.89	121.28	116.58
2	A	1201	E2J	C33-C34-N14	-3.78	107.80	111.23
2	A	1201	E2J	O05-C04-C03	-2.82	119.69	125.08
2	A	1201	E2J	C34-C33-C17	-2.34	107.47	111.16
2	A	1201	E2J	C30-C29-C28	-2.25	119.84	122.83
2	A	1201	E2J	C15-C16-C17	-2.21	107.67	111.16
2	A	1201	E2J	C12-C03-C04	2.15	119.45	116.50
2	A	1201	E2J	C16-C15-N14	-2.11	109.31	111.23

There are no chirality outliers.

All (29) torsion outliers are listed below:

Mol	Chain	Res	Type	Atoms
3	A	1206	OLC	O20-C21-C22-O23
3	A	1204	OLC	O20-C21-C22-O23
3	A	1206	OLC	C1-C2-C3-C4
3	A	1206	OLC	O20-C21-C22-C24
5	A	1210	OLA	C11-C12-C13-C14
5	A	1210	OLA	C6-C7-C8-C9
5	A	1209	OLA	C1-C2-C3-C4
5	A	1210	OLA	C2-C3-C4-C5
3	A	1202	OLC	C9-C10-C11-C12
4	A	1208	PEG	C4-C3-O2-C2
2	A	1201	E2J	C17-C18-C19-C24
2	A	1201	E2J	C17-C18-C19-C20
5	A	1210	OLA	C5-C6-C7-C8
5	A	1209	OLA	C6-C7-C8-C9

Continued on next page...

Continued from previous page...

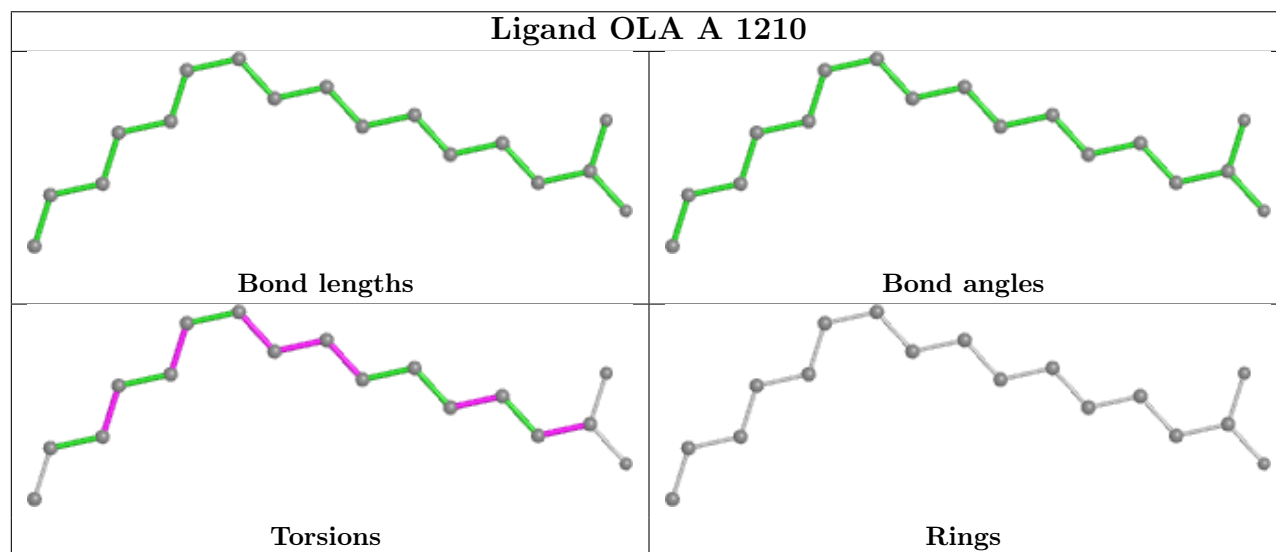
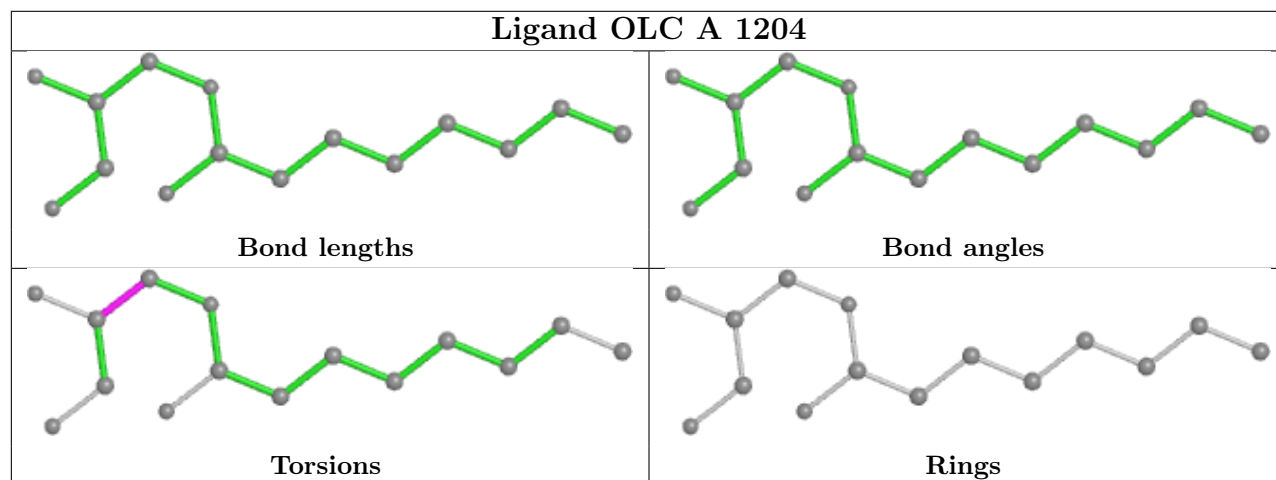
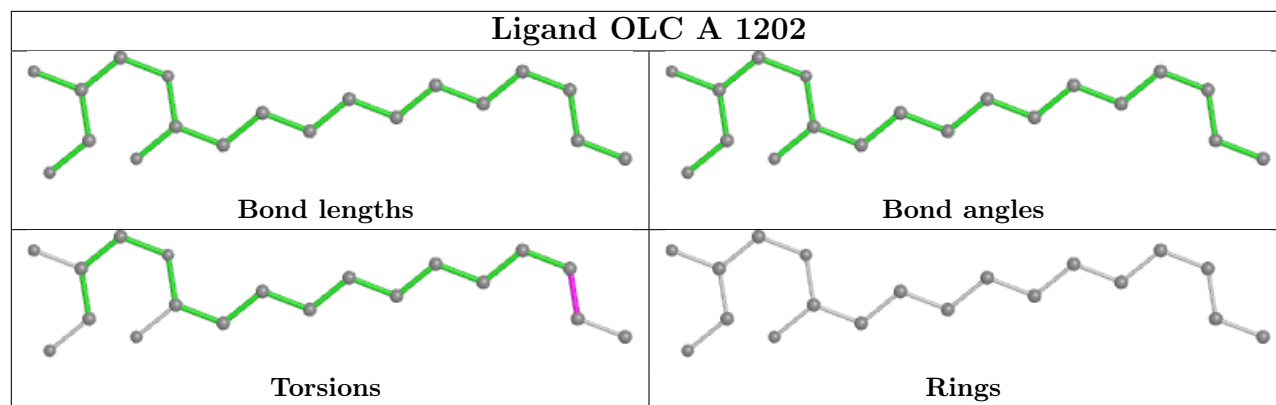
Mol	Chain	Res	Type	Atoms
4	A	1208	PEG	C1-C2-O2-C3
2	A	1201	E2J	C26-C18-C19-C20
2	A	1201	E2J	C26-C18-C19-C24
5	A	1209	OLA	O1-C1-C2-C3
3	A	1206	OLC	C4-C5-C6-C7
5	A	1210	OLA	O2-C1-C2-C3
5	A	1210	OLA	O1-C1-C2-C3
5	A	1209	OLA	O2-C1-C2-C3
3	A	1206	OLC	O20-C1-C2-C3
3	A	1203	OLC	C1-C2-C3-C4
5	A	1209	OLA	C9-C10-C11-C12
5	A	1210	OLA	C9-C10-C11-C12
3	A	1206	OLC	C2-C3-C4-C5
5	A	1210	OLA	C7-C8-C9-C10
3	A	1206	OLC	O19-C1-C2-C3

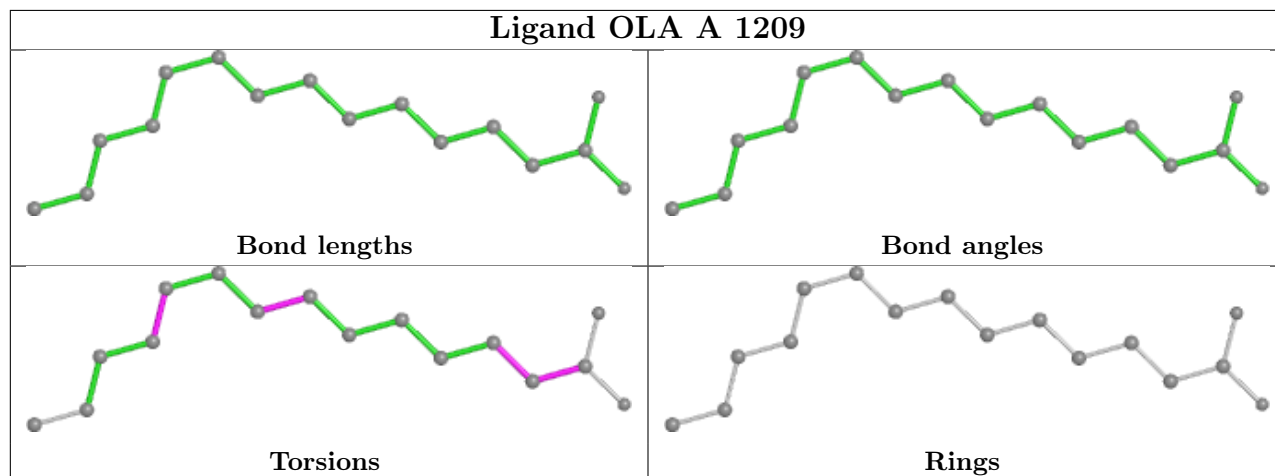
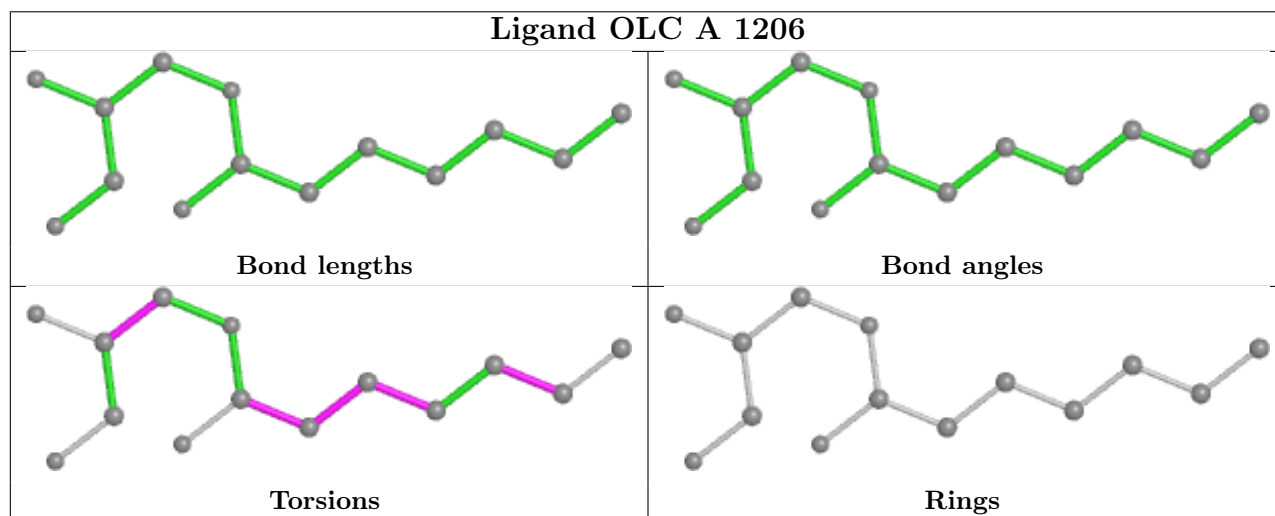
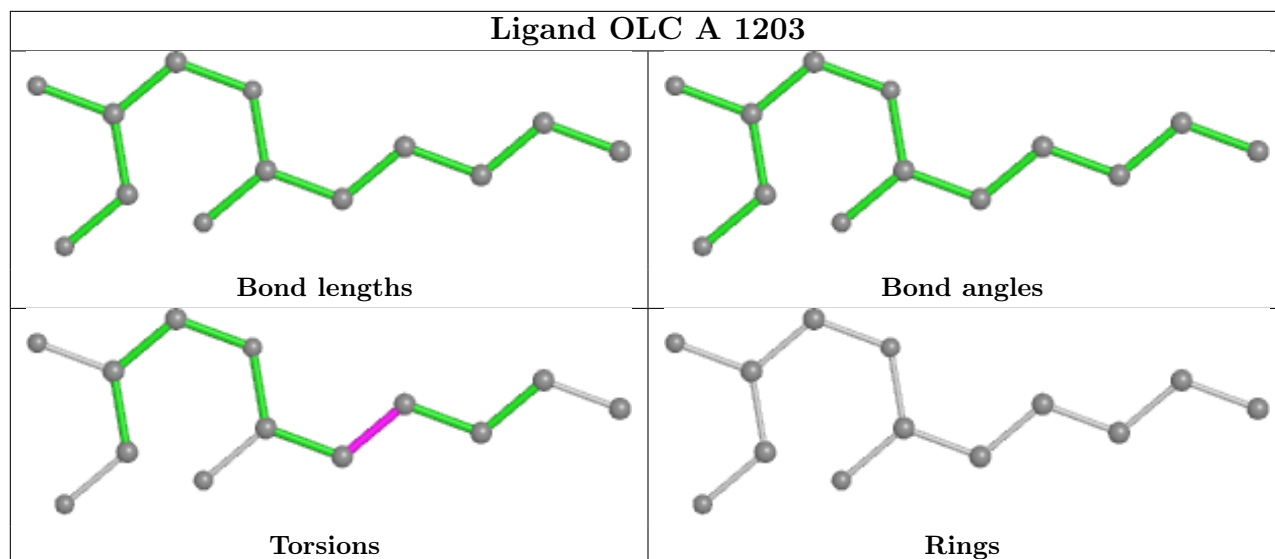
There are no ring outliers.

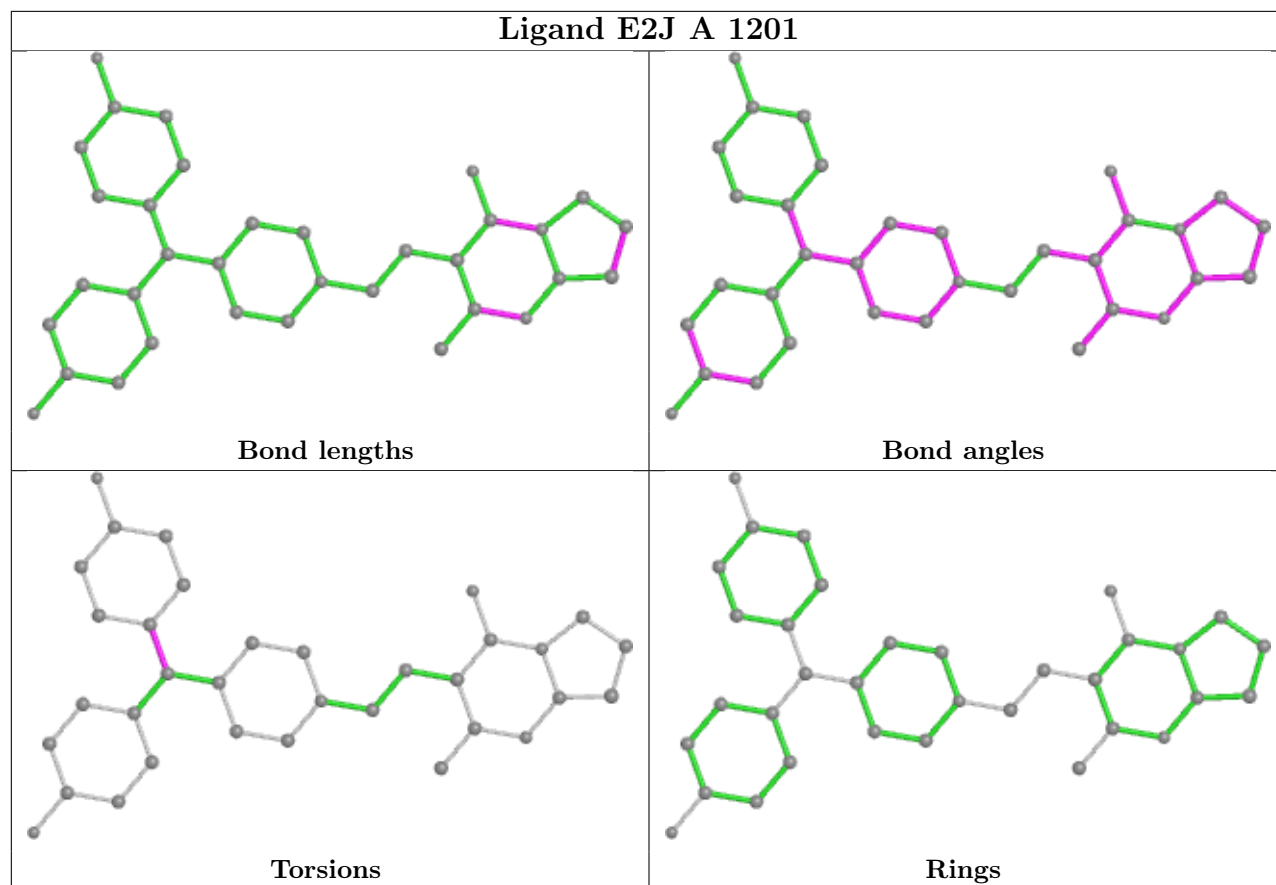
1 monomer is involved in 1 short contact:

Mol	Chain	Res	Type	Clashes	Symm-Clashes
2	A	1201	E2J	1	0

The following is a two-dimensional graphical depiction of Mogul quality analysis of bond lengths, bond angles, torsion angles, and ring geometry for all instances of the Ligand of Interest. In addition, ligands with molecular weight > 250 and outliers as shown on the validation Tables will also be included. For torsion angles, if less than 5% of the Mogul distribution of torsion angles is within 10 degrees of the torsion angle in question, then that torsion angle is considered an outlier. Any bond that is central to one or more torsion angles identified as an outlier by Mogul will be highlighted in the graph. For rings, the root-mean-square deviation (RMSD) between the ring in question and similar rings identified by Mogul is calculated over all ring torsion angles. If the average RMSD is greater than 60 degrees and the minimal RMSD between the ring in question and any Mogul-identified rings is also greater than 60 degrees, then that ring is considered an outlier. The outliers are highlighted in purple. The color gray indicates Mogul did not find sufficient equivalents in the CSD to analyse the geometry.







5.7 Other polymers [i](#)

There are no such residues in this entry.

5.8 Polymer linkage issues [i](#)

There are no chain breaks in this entry.

6 Fit of model and data

6.1 Protein, DNA and RNA chains

In the following table, the column labelled ‘#RSRZ > 2’ contains the number (and percentage) of RSRZ outliers, followed by percent RSRZ outliers for the chain as percentile scores relative to all X-ray entries and entries of similar resolution. The OWAB column contains the minimum, median, 95th percentile and maximum values of the occupancy-weighted average B-factor per residue. The column labelled ‘Q < 0.9’ lists the number of (and percentage) of residues with an average occupancy less than 0.9.

Mol	Chain	Analysed	<RSRZ>	#RSRZ>2	OWAB(Å ²)	Q<0.9
1	A	351/452 (77%)	0.75	48 (13%) 3 2	70, 100, 194, 264	0

All (48) RSRZ outliers are listed below:

Mol	Chain	Res	Type	RSRZ
1	A	1016	VAL	8.8
1	A	1026	VAL	6.4
1	A	1096	THR	6.3
1	A	1043	ALA	6.2
1	A	46	PHE	5.7
1	A	1020	ALA	5.6
1	A	1017	ILE	5.5
1	A	1014	LEU	4.9
1	A	1044	THR	4.7
1	A	163	SER	4.5
1	A	340	SER	4.5
1	A	1095	LYS	4.5
1	A	1028	ASP	4.4
1	A	1067	ILE	4.0
1	A	1102	ILE	3.7
1	A	1030	LEU	3.7
1	A	160	ILE	3.6
1	A	1029	ALA	3.5
1	A	1018	GLU	3.4
1	A	1094	LEU	3.4
1	A	337	CYS	3.2
1	A	162	HIS	3.1
1	A	1040	ALA	3.1
1	A	1019	LYS	3.0
1	A	157	ARG	3.0
1	A	336	LEU	2.9
1	A	241	LEU	2.8

Continued on next page...

Continued from previous page...

Mol	Chain	Res	Type	RSRZ
1	A	1031	THR	2.6
1	A	159	PRO	2.6
1	A	161	GLU	2.5
1	A	1066	ASP	2.5
1	A	1033	MET	2.5
1	A	158	ASN	2.5
1	A	1068	LEU	2.4
1	A	341	CYS	2.4
1	A	153	TYR	2.4
1	A	240	VAL	2.4
1	A	242	ARG	2.4
1	A	106	VAL	2.3
1	A	339	LYS	2.2
1	A	318	PHE	2.2
1	A	1015	LYS	2.2
1	A	239	TYR	2.2
1	A	47	LYS	2.1
1	A	1061	PHE	2.1
1	A	303	ILE	2.0
1	A	83	LYS	2.0
1	A	1065	PHE	2.0

6.2 Non-standard residues in protein, DNA, RNA chains [i](#)

There are no non-standard protein/DNA/RNA residues in this entry.

6.3 Carbohydrates [i](#)

There are no monosaccharides in this entry.

6.4 Ligands [i](#)

In the following table, the Atoms column lists the number of modelled atoms in the group and the number defined in the chemical component dictionary. The B-factors column lists the minimum, median, 95th percentile and maximum values of B factors of atoms in the group. The column labelled 'Q< 0.9' lists the number of atoms with occupancy less than 0.9.

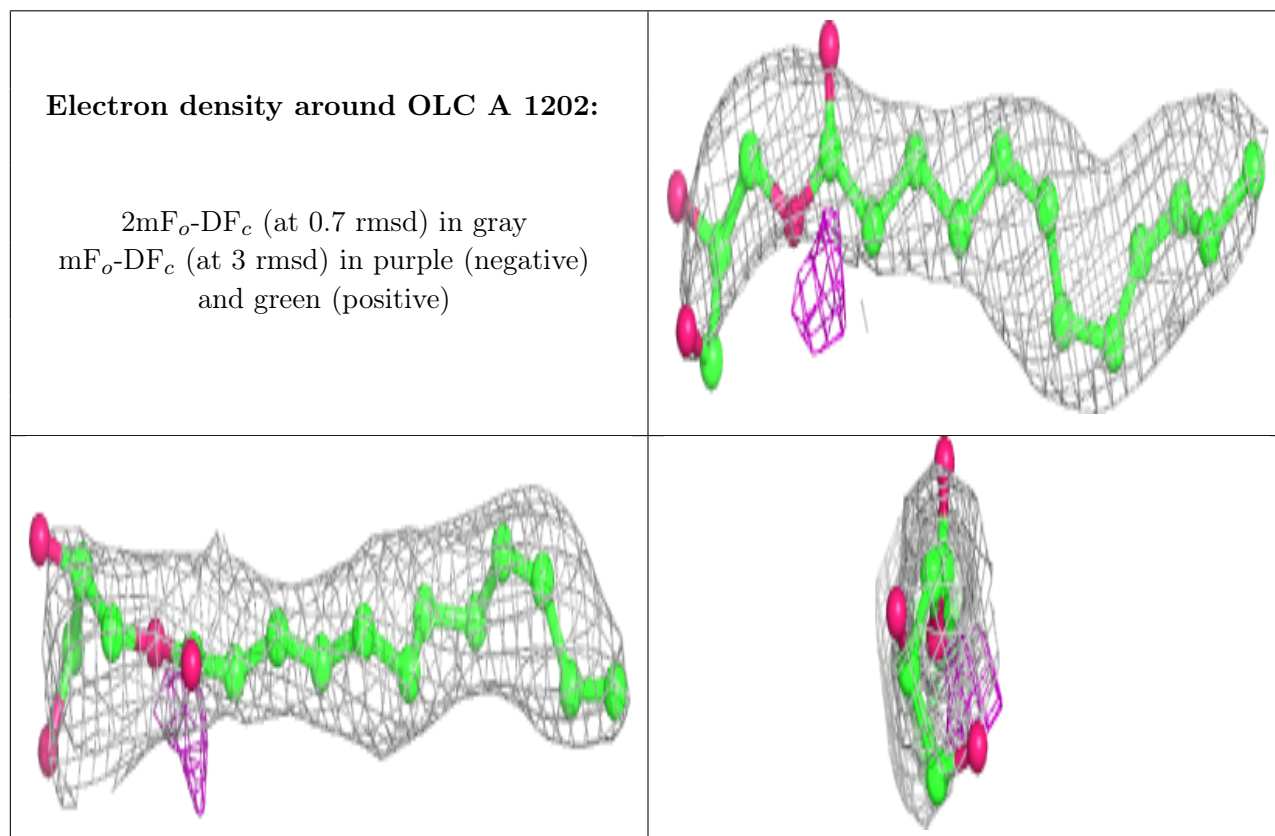
Mol	Type	Chain	Res	Atoms	RSCC	RSR	B-factors(\AA^2)	Q<0.9
3	OLC	A	1202	19/25	0.66	0.39	86,99,138,140	0
5	OLA	A	1209	16/20	0.80	0.29	78,114,123,128	0

Continued on next page...

Continued from previous page...

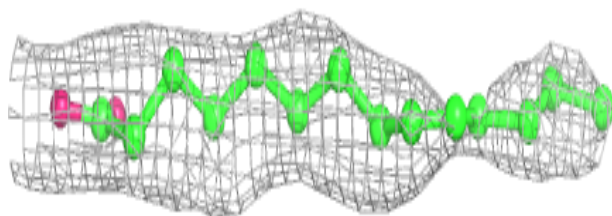
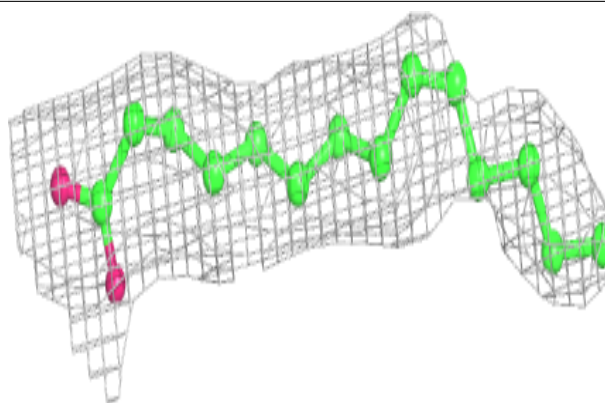
Mol	Type	Chain	Res	Atoms	RSCC	RSR	B-factors(\AA^2)	Q<0.9
5	OLA	A	1210	17/20	0.80	0.30	98,113,128,128	0
3	OLC	A	1205	12/25	0.82	0.21	101,125,128,133	0
3	OLC	A	1206	14/25	0.82	0.41	111,123,132,138	0
3	OLC	A	1203	13/25	0.85	0.17	86,109,125,129	0
4	PEG	A	1208	7/7	0.85	0.23	101,112,128,131	0
3	OLC	A	1204	15/25	0.87	0.22	90,101,116,127	0
3	OLC	A	1207	7/25	0.93	0.20	89,93,103,105	0
2	E2J	A	1201	34/34	0.93	0.22	71,90,99,101	0

The following is a graphical depiction of the model fit to experimental electron density of all instances of the Ligand of Interest. In addition, ligands with molecular weight > 250 and outliers as shown on the geometry validation Tables will also be included. Each fit is shown from different orientation to approximate a three-dimensional view.

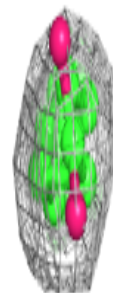
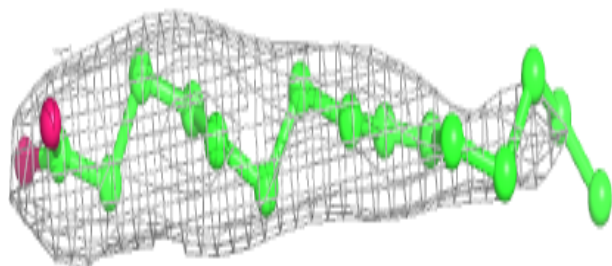
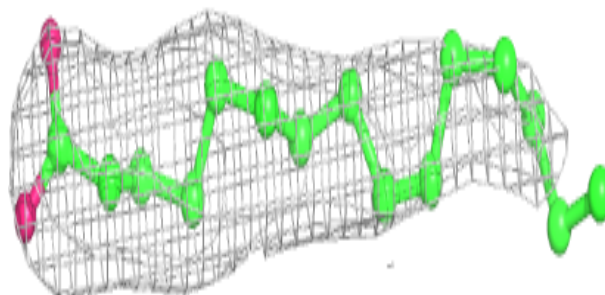


Electron density around OLA A 1209:

$2mF_o-DF_c$ (at 0.7 rmsd) in gray
 mF_o-DF_c (at 3 rmsd) in purple (negative)
and green (positive)

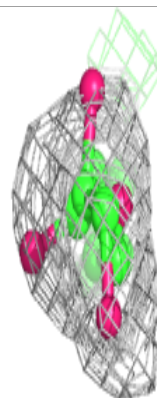
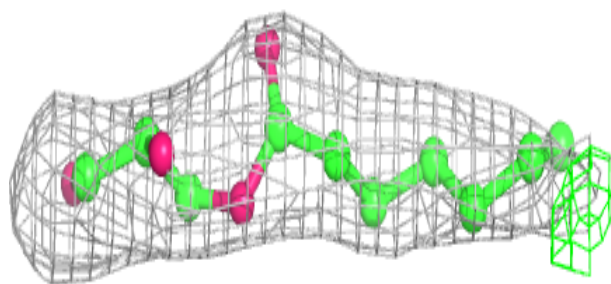
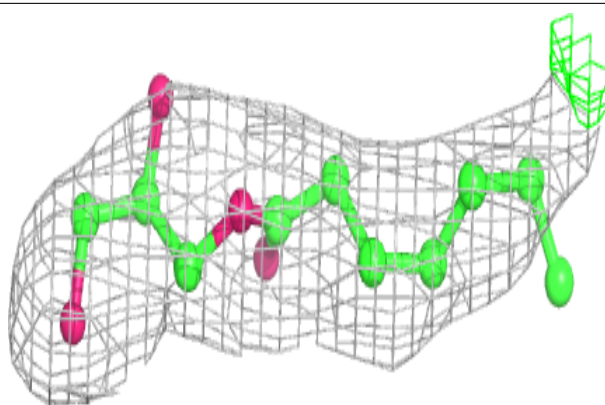
**Electron density around OLA A 1210:**

$2mF_o-DF_c$ (at 0.7 rmsd) in gray
 mF_o-DF_c (at 3 rmsd) in purple (negative)
and green (positive)

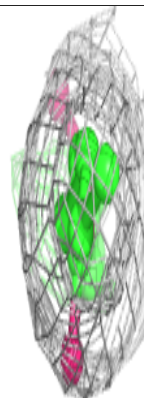
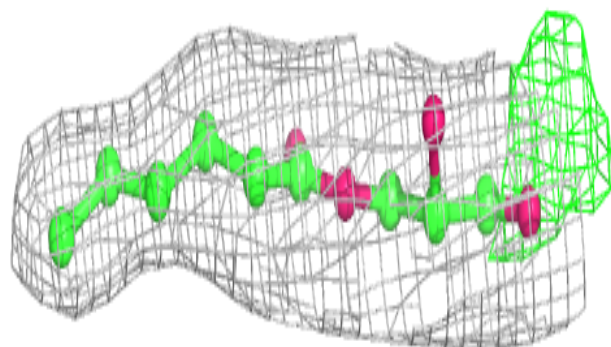
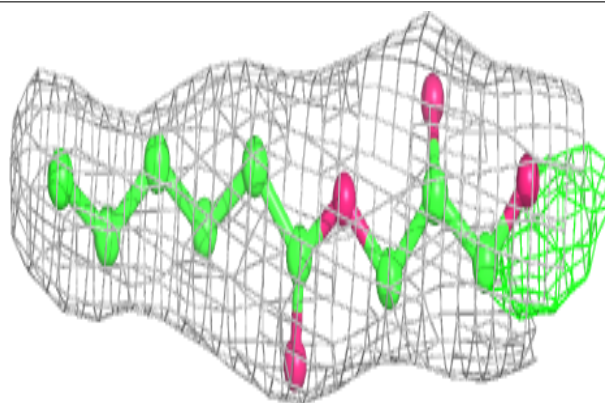


Electron density around OLC A 1206:

$2mF_o-DF_c$ (at 0.7 rmsd) in gray
 mF_o-DF_c (at 3 rmsd) in purple (negative)
and green (positive)

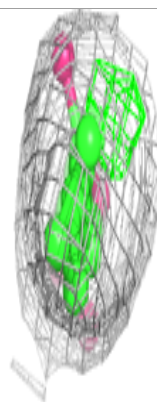
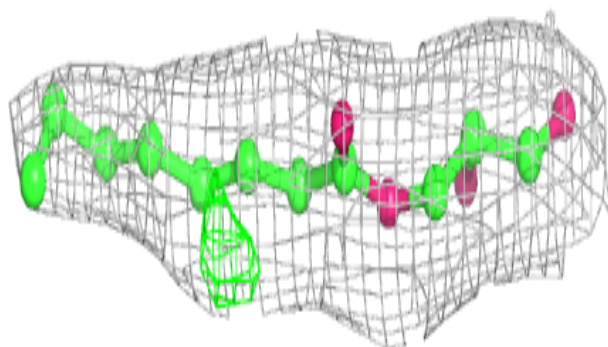
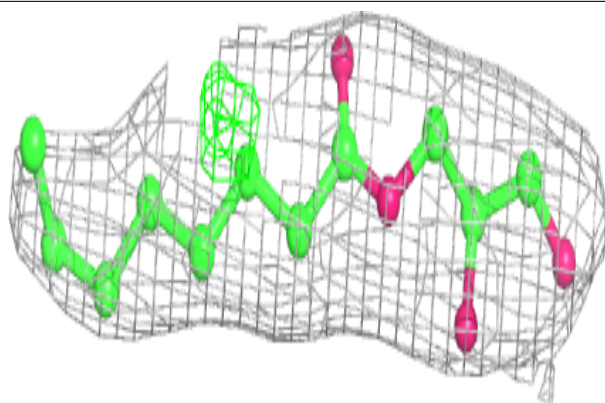
**Electron density around OLC A 1203:**

$2mF_o-DF_c$ (at 0.7 rmsd) in gray
 mF_o-DF_c (at 3 rmsd) in purple (negative)
and green (positive)

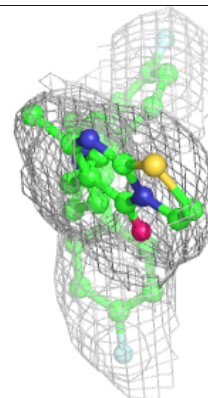
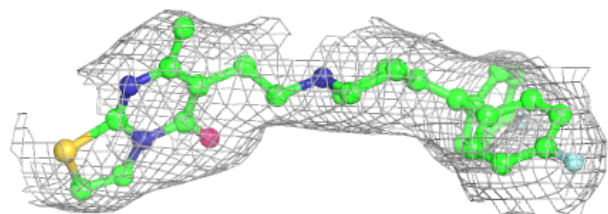
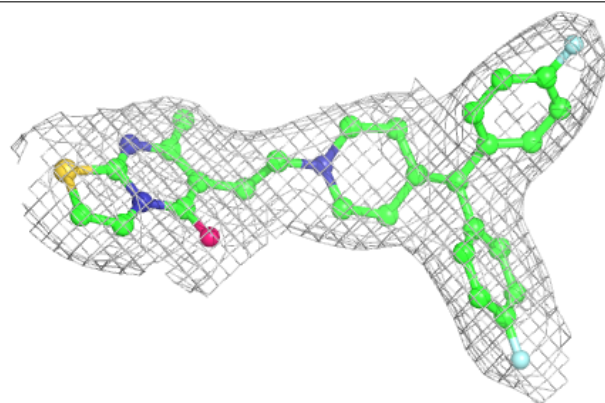


Electron density around OLC A 1204:

$2mF_o-DF_c$ (at 0.7 rmsd) in gray
 mF_o-DF_c (at 3 rmsd) in purple (negative)
and green (positive)

**Electron density around E2J A 1201:**

$2mF_o-DF_c$ (at 0.7 rmsd) in gray
 mF_o-DF_c (at 3 rmsd) in purple (negative)
and green (positive)



6.5 Other polymers [i](#)

There are no such residues in this entry.