



Full wwPDB X-ray Structure Validation Report ⓘ

Aug 2, 2023 – 06:44 AM EDT

PDB ID : 1BSZ
Title : PEPTIDE DEFORMYLASE AS FE²⁺ CONTAINING FORM (NATIVE) IN COMPLEX WITH INHIBITOR POLYETHYLENE GLYCOL
Authors : Becker, A.; Schlichting, I.; Kabsch, W.; Groche, D.; Schultz, S.; Wagner, A.F.V.
Deposited on : 1998-09-01
Resolution : 1.90 Å(reported)

This is a Full wwPDB X-ray Structure Validation Report for a publicly released PDB entry.

We welcome your comments at validation@mail.wwpdb.org

A user guide is available at

<https://www.wwpdb.org/validation/2017/XrayValidationReportHelp>

with specific help available everywhere you see the ⓘ symbol.

The types of validation reports are described at

<http://www.wwpdb.org/validation/2017/FAQs#types>.

The following versions of software and data (see [references ⓘ](#)) were used in the production of this report:

MolProbity : 4.02b-467
Mogul : 1.8.5 (274361), CSD as541be (2020)
Xtriage (Phenix) : 1.13
EDS : 2.34
buster-report : 1.1.7 (2018)
Percentile statistics : 20191225.v01 (using entries in the PDB archive December 25th 2019)
Refmac : 5.8.0158
CCP4 : 7.0.044 (Gargrove)
Ideal geometry (proteins) : Engh & Huber (2001)
Ideal geometry (DNA, RNA) : Parkinson et al. (1996)
Validation Pipeline (wwPDB-VP) : 2.34

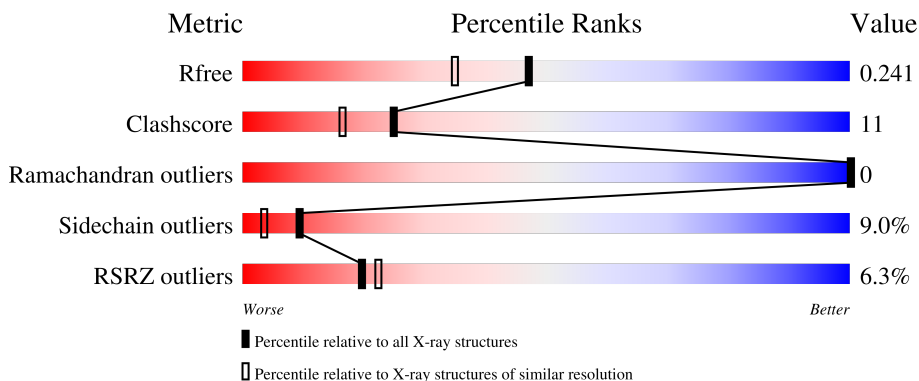
1 Overall quality at a glance

The following experimental techniques were used to determine the structure:

X-RAY DIFFRACTION

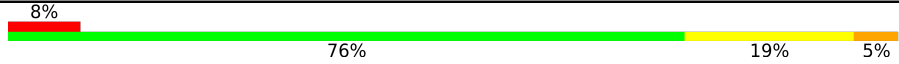
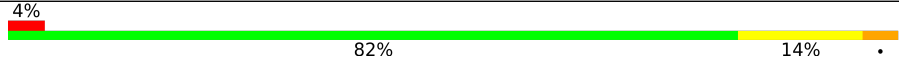

The reported resolution of this entry is 1.90 Å.

Percentile scores (ranging between 0-100) for global validation metrics of the entry are shown in the following graphic. The table shows the number of entries on which the scores are based.



Metric	Whole archive (#Entries)	Similar resolution (#Entries, resolution range(Å))
R_{free}	130704	6207 (1.90-1.90)
Clashscore	141614	6847 (1.90-1.90)
Ramachandran outliers	138981	6760 (1.90-1.90)
Sidechain outliers	138945	6760 (1.90-1.90)
RSRZ outliers	127900	6082 (1.90-1.90)

The table below summarises the geometric issues observed across the polymeric chains and their fit to the electron density. The red, orange, yellow and green segments of the lower bar indicate the fraction of residues that contain outliers for ≥ 3 , 2, 1 and 0 types of geometric quality criteria respectively. A grey segment represents the fraction of residues that are not modelled. The numeric value for each fraction is indicated below the corresponding segment, with a dot representing fractions $\leq 5\%$. The upper red bar (where present) indicates the fraction of residues that have poor fit to the electron density. The numeric value is given above the bar.

Mol	Chain	Length	Quality of chain
1	A	168	
1	B	168	
1	C	168	

2 Entry composition

There are 5 unique types of molecules in this entry. The entry contains 4430 atoms, of which 0 are hydrogens and 0 are deuteriums.

In the tables below, the ZeroOcc column contains the number of atoms modelled with zero occupancy, the AltConf column contains the number of residues with at least one atom in alternate conformation and the Trace column contains the number of residues modelled with at most 2 atoms.

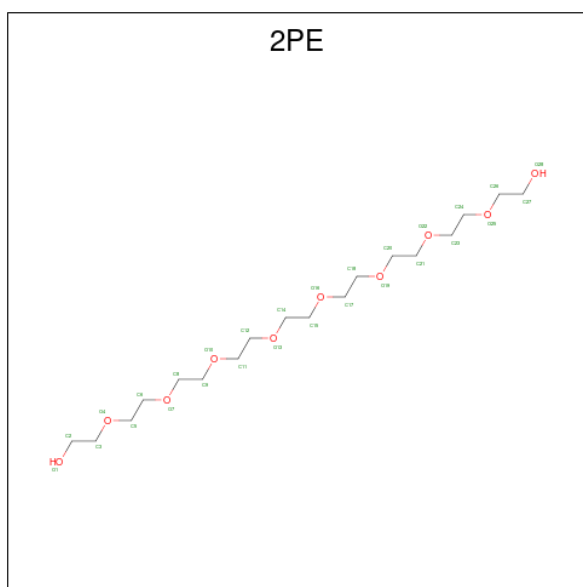
- Molecule 1 is a protein called PROTEIN (PEPTIDE DEFORMYLASE).

Mol	Chain	Residues	Atoms					ZeroOcc	AltConf	Trace
			Total	C	N	O	S			
1	A	168	1379	863	251	257	8	0	7	0
1	B	168	1387	869	253	257	8	0	9	0
1	C	168	1356	849	244	255	8	0	3	0

- Molecule 2 is FE (III) ION (three-letter code: FE) (formula: Fe).

Mol	Chain	Residues	Atoms		ZeroOcc	AltConf
2	A	1	Total	Fe	0	0
			1	1		
2	B	1	Total	Fe	0	0
			1	1		
2	C	1	Total	Fe	0	0
			1	1		

- Molecule 3 is NONAETHYLENE GLYCOL (three-letter code: 2PE) (formula: C₁₈H₃₈O₁₀).



Mol	Chain	Residues	Atoms			ZeroOcc	AltConf
3	A	1	Total	C	O	0	0
			28	18	10		
3	B	1	Total	C	O	0	0
			28	18	10		
3	C	1	Total	C	O	0	0
			28	18	10		

- Molecule 4 is SULFATE ION (three-letter code: SO4) (formula: O₄S).



Mol	Chain	Residues	Atoms			ZeroOcc	AltConf
4	C	1	Total	O	S	0	0
			5	4	1		

Continued on next page...

Continued from previous page...

Mol	Chain	Residues	Atoms			ZeroOcc	AltConf
4	C	1	Total	O	S	0	0
			5	4	1		

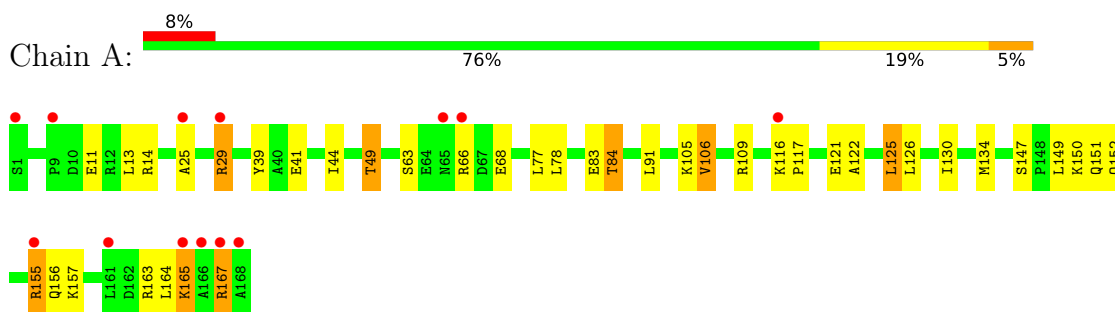
- Molecule 5 is water.

Mol	Chain	Residues	Atoms		ZeroOcc	AltConf
5	A	67	Total	O	0	0
			67	67		
5	B	68	Total	O	0	0
			68	68		
5	C	76	Total	O	0	0
			76	76		

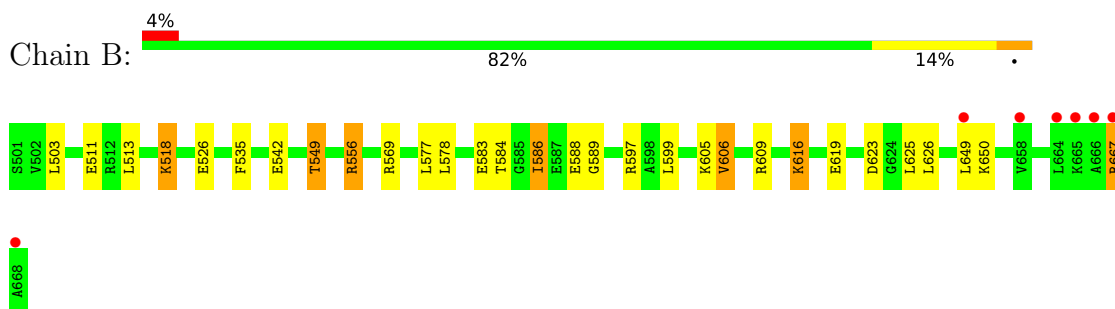
3 Residue-property plots [i](#)

These plots are drawn for all protein, RNA, DNA and oligosaccharide chains in the entry. The first graphic for a chain summarises the proportions of the various outlier classes displayed in the second graphic. The second graphic shows the sequence view annotated by issues in geometry and electron density. Residues are color-coded according to the number of geometric quality criteria for which they contain at least one outlier: green = 0, yellow = 1, orange = 2 and red = 3 or more. A red dot above a residue indicates a poor fit to the electron density ($RSRZ > 2$). Stretches of 2 or more consecutive residues without any outlier are shown as a green connector. Residues present in the sample, but not in the model, are shown in grey.

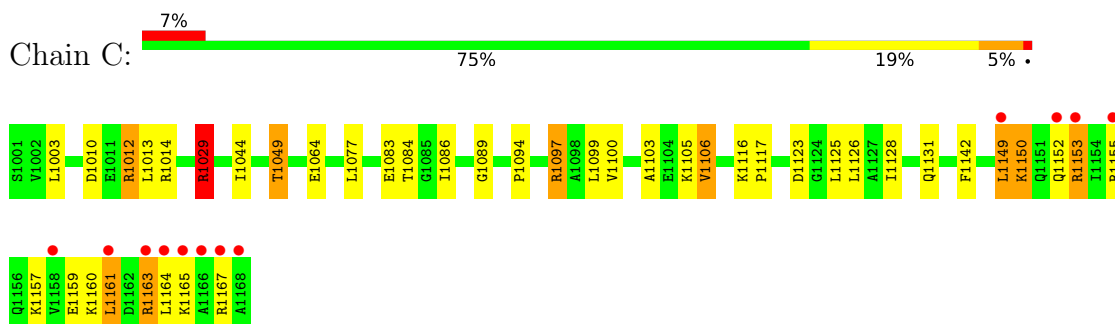
- Molecule 1: PROTEIN (PEPTIDE DEFORMYLASE)



- Molecule 1: PROTEIN (PEPTIDE DEFORMYLASE)



- Molecule 1: PROTEIN (PEPTIDE DEFORMYLASE)



4 Data and refinement statistics

Property	Value	Source
Space group	C 1 2 1	Depositor
Cell constants a, b, c, α , β , γ	141.00Å 63.40Å 86.80Å 90.00° 120.60° 90.00°	Depositor
Resolution (Å)	6.00 – 1.90 9.98 – 1.90	Depositor EDS
% Data completeness (in resolution range)	96.7 (6.00-1.90) 91.7 (9.98-1.90)	Depositor EDS
R_{merge}	(Not available)	Depositor
R_{sym}	0.06	Depositor
$\langle I/\sigma(I) \rangle$	-	Xtrriage
Refinement program	X-PLOR 3.851	Depositor
R, R_{free}	0.197 , 0.247 0.196 , 0.241	Depositor DCC
R_{free} test set	5096 reflections (10.18%)	wwPDB-VP
Wilson B-factor (Å ²)	22.7	Xtrriage
Anisotropy	0.162	Xtrriage
Bulk solvent k_{sol} (e/Å ³), B_{sol} (Å ²)	0.45 , 81.7	EDS
L-test for twinning ¹	$\langle L \rangle = 0.46$, $\langle L^2 \rangle = 0.29$	Xtrriage
Estimated twinning fraction	No twinning to report.	Xtrriage
F_o, F_c correlation	0.95	EDS
Total number of atoms	4430	wwPDB-VP
Average B, all atoms (Å ²)	29.0	wwPDB-VP

Xtrriage's analysis on translational NCS is as follows: *The largest off-origin peak in the Patterson function is 5.83% of the height of the origin peak. No significant pseudotranslation is detected.*

¹Theoretical values of $\langle |L| \rangle$, $\langle L^2 \rangle$ for acentric reflections are 0.5, 0.333 respectively for untwinned datasets, and 0.375, 0.2 for perfectly twinned datasets.

5 Model quality [i](#)

5.1 Standard geometry [i](#)

Bond lengths and bond angles in the following residue types are not validated in this section: FE, 2PE, SO4

The Z score for a bond length (or angle) is the number of standard deviations the observed value is removed from the expected value. A bond length (or angle) with $|Z| > 5$ is considered an outlier worth inspection. RMSZ is the root-mean-square of all Z scores of the bond lengths (or angles).

Mol	Chain	Bond lengths		Bond angles	
		RMSZ	# Z >5	RMSZ	# Z >5
1	A	0.52	0/1434	0.63	1/1924 (0.1%)
1	B	0.52	0/1452	0.69	3/1949 (0.2%)
1	C	0.50	0/1386	0.63	1/1862 (0.1%)
All	All	0.51	0/4272	0.65	5/5735 (0.1%)

Chiral center outliers are detected by calculating the chiral volume of a chiral center and verifying if the center is modelled as a planar moiety or with the opposite hand. A planarity outlier is detected by checking planarity of atoms in a peptide group, atoms in a mainchain group or atoms of a sidechain that are expected to be planar.

Mol	Chain	#Chirality outliers	#Planarity outliers
1	A	0	5
1	B	0	2
1	C	0	3
All	All	0	10

There are no bond length outliers.

All (5) bond angle outliers are listed below:

Mol	Chain	Res	Type	Atoms	Z	Observed(°)	Ideal(°)
1	B	649[A]	LEU	CA-CB-CG	6.66	130.61	115.30
1	B	649[B]	LEU	CA-CB-CG	6.66	130.61	115.30
1	C	1029	ARG	NE-CZ-NH2	-6.08	117.26	120.30
1	B	556	ARG	NE-CZ-NH2	-5.72	117.44	120.30
1	A	125	LEU	CA-CB-CG	5.66	128.32	115.30

There are no chirality outliers.

All (10) planarity outliers are listed below:

Mol	Chain	Res	Type	Group
1	A	155[A]	ARG	Sidechain
1	A	155[B]	ARG	Sidechain
1	A	155[C]	ARG	Sidechain
1	A	163	ARG	Sidechain
1	A	83	GLU	Mainchain
1	B	556	ARG	Sidechain
1	B	583	GLU	Mainchain
1	C	1012	ARG	Sidechain
1	C	1029	ARG	Sidechain
1	C	1083	GLU	Mainchain

5.2 Too-close contacts [\(i\)](#)

In the following table, the Non-H and H(model) columns list the number of non-hydrogen atoms and hydrogen atoms in the chain respectively. The H(added) column lists the number of hydrogen atoms added and optimized by MolProbity. The Clashes column lists the number of clashes within the asymmetric unit, whereas Symm-Clashes lists symmetry-related clashes.

Mol	Chain	Non-H	H(model)	H(added)	Clashes	Symm-Clashes
1	A	1379	0	1446	26	0
1	B	1387	0	1461	32	0
1	C	1356	0	1405	30	0
2	A	1	0	0	0	0
2	B	1	0	0	0	0
2	C	1	0	0	0	0
3	A	28	0	38	4	0
3	B	28	0	38	15	0
3	C	28	0	38	10	0
4	C	10	0	0	1	0
5	A	67	0	0	3	0
5	B	68	0	0	1	0
5	C	76	0	0	3	0
All	All	4430	0	4426	94	0

The all-atom clashscore is defined as the number of clashes found per 1000 atoms (including hydrogen atoms). The all-atom clashscore for this structure is 11.

All (94) close contacts within the same asymmetric unit are listed below, sorted by their clash magnitude.

Atom-1	Atom-2	Interatomic distance (Å)	Clash overlap (Å)
1:B:542:GLU:HB2	3:B:3002:2PE:H51	1.46	0.97

Continued on next page...

Continued from previous page...

Atom-1	Atom-2	Interatomic distance (Å)	Clash overlap (Å)
1:C:1103:ALA:H	1:C:1131:GLN:HE22	1.24	0.81
1:C:1097:ARG:NH2	3:C:3003:2PE:H62	1.98	0.79
1:C:1044:ILE:HG12	3:C:3003:2PE:H82	1.65	0.79
1:B:578:LEU:HD11	1:B:609[B]:ARG:HD2	1.64	0.78
1:B:597:ARG:HH22	3:B:3002:2PE:H272	1.50	0.76
1:C:1097:ARG:HH22	3:C:3003:2PE:H62	1.52	0.72
1:A:147:SER:OG	1:A:150[A]:LYS:HG2	1.90	0.72
1:C:1044:ILE:HG12	3:C:3003:2PE:C8	2.23	0.69
3:C:3003:2PE:H92	3:C:3003:2PE:H51	1.75	0.68
1:B:588:GLU:HA	3:B:3002:2PE:H211	1.76	0.67
1:A:105:LYS:HE3	1:A:121:GLU:HB3	1.77	0.65
1:B:549:THR:HB	5:B:9073:HOH:O	1.97	0.65
1:C:1149:LEU:HD12	1:C:1152:GLN:OE1	1.97	0.64
1:A:84:THR:HG21	5:A:8061:HOH:O	1.97	0.63
1:C:1077:LEU:HD11	1:C:1106:VAL:HG22	1.81	0.63
1:C:1010:ASP:OD1	1:C:1012:ARG:HD3	1.98	0.63
1:A:77:LEU:HD11	1:A:106:VAL:HG22	1.81	0.63
1:A:167:ARG:HG3	1:A:167:ARG:HH11	1.64	0.61
1:B:526:GLU:OE2	1:C:1029:ARG:HD2	1.99	0.61
1:C:1105:LYS:HD3	1:C:1123:ASP:HB3	1.82	0.61
1:A:151:GLN:O	1:A:155[C]:ARG:HG3	2.00	0.60
1:B:589:GLY:H	3:B:3002:2PE:H212	1.66	0.60
3:C:3003:2PE:H61	3:C:3003:2PE:H182	1.84	0.59
1:B:577:LEU:HD11	1:B:606:VAL:HG22	1.85	0.59
1:A:25:ALA:O	1:A:29:ARG:HD2	2.03	0.58
1:A:91:LEU:HD23	3:A:3000:2PE:H271	1.85	0.57
1:A:130:ILE:O	1:A:134[A]:MET:HG3	2.04	0.57
1:A:105:LYS:HD3	1:A:122:ALA:O	2.05	0.56
3:B:3002:2PE:H272	3:B:3002:2PE:H122	1.88	0.56
1:C:1167:ARG:HH11	1:C:1167:ARG:HG2	1.70	0.56
1:B:597:ARG:NH2	3:B:3002:2PE:H112	2.21	0.56
1:B:605:LYS:HG2	1:B:623:ASP:HB3	1.88	0.56
1:B:597:ARG:HH12	3:B:3002:2PE:C23	2.19	0.55
1:B:597:ARG:NH2	3:B:3002:2PE:H272	2.20	0.54
1:B:609[B]:ARG:HG3	1:B:619:GLU:HG2	1.88	0.54
1:C:1150:LYS:N	1:C:1150:LYS:HD3	2.23	0.54
1:B:578:LEU:HD11	1:B:609[B]:ARG:CD	2.36	0.53
1:B:535:PHE:CZ	1:B:569[A]:ARG:HB3	2.45	0.52
1:C:1049:THR:HB	5:C:7073:HOH:O	2.09	0.52
1:B:589:GLY:H	3:B:3002:2PE:C21	2.24	0.51
1:B:535:PHE:CZ	1:B:569[B]:ARG:HB3	2.45	0.51

Continued on next page...

Continued from previous page...

Atom-1	Atom-2	Interatomic distance (Å)	Clash overlap (Å)
1:A:44:ILE:H	3:A:3000:2PE:H182	1.74	0.51
1:C:1103:ALA:N	1:C:1131:GLN:HE22	2.00	0.51
1:A:116:LYS:HD3	1:A:117:PRO:HD2	1.93	0.50
1:B:597:ARG:NH1	3:B:3002:2PE:H232	2.27	0.49
1:B:609[B]:ARG:CG	1:B:619:GLU:HG2	2.43	0.49
1:A:63:SER:HB3	1:A:68:GLU:HG3	1.94	0.49
1:C:1099:LEU:HD23	1:C:1100:VAL:N	2.28	0.48
1:B:503:LEU:HD23	1:C:1003:LEU:HD23	1.95	0.48
1:A:49:THR:HB	5:A:8033:HOH:O	2.13	0.47
1:C:1064:GLU:HG3	5:C:7046:HOH:O	2.15	0.47
1:C:1029:ARG:NH2	4:C:3001:SO4:O2	2.46	0.47
1:C:1116:LYS:HA	1:C:1117:PRO:HD3	1.80	0.47
1:A:25:ALA:O	1:A:29:ARG:NH1	2.49	0.46
1:A:155[B]:ARG:HG2	1:A:156:GLN:N	2.31	0.46
1:B:597:ARG:NH1	3:B:3002:2PE:C23	2.79	0.45
1:C:1089:GLY:HA3	3:C:3003:2PE:H52	1.97	0.45
1:A:149[A]:LEU:HD23	1:A:150[A]:LYS:HZ1	1.80	0.45
1:C:1044:ILE:H	3:C:3003:2PE:H82	1.82	0.44
1:A:25:ALA:HB1	1:A:29:ARG:CZ	2.47	0.44
1:B:578:LEU:HD11	1:B:609[B]:ARG:CG	2.48	0.44
3:C:3003:2PE:H21	5:C:7003:HOH:O	2.16	0.44
1:C:1086:ILE:HG12	1:C:1128:ILE:HD13	2.00	0.43
3:A:3000:2PE:H51	3:A:3000:2PE:H82	1.77	0.43
1:B:667:ARG:O	1:B:667:ARG:NE	2.51	0.43
1:B:586:ILE:O	1:B:599:LEU:HA	2.19	0.43
1:C:1094:PRO:HG2	1:C:1161:LEU:HD22	2.00	0.43
1:A:78:LEU:HD11	1:A:109:ARG:HB2	2.00	0.43
1:A:39:TYR:CE1	1:A:66:ARG:HD2	2.54	0.42
1:B:577:LEU:CD1	1:B:606:VAL:HG22	2.50	0.42
3:B:3002:2PE:H212	3:B:3002:2PE:H182	1.85	0.42
1:A:41:GLU:HB3	1:A:91:LEU:HD22	2.01	0.42
1:C:1163:ARG:HB3	1:C:1164:LEU:HD22	2.00	0.42
1:A:152:GLN:HA	1:A:155[C]:ARG:HD2	2.01	0.42
1:C:1142:PHE:CD1	1:C:1142:PHE:C	2.93	0.42
3:C:3003:2PE:H81	3:C:3003:2PE:H112	1.89	0.42
1:B:542:GLU:OE1	3:B:3002:2PE:H21	2.19	0.42
1:C:1077:LEU:CD1	1:C:1106:VAL:HG22	2.47	0.42
1:B:597:ARG:HH22	3:B:3002:2PE:C27	2.28	0.41
1:A:165:LYS:HA	5:A:8049:HOH:O	2.20	0.41
1:C:1153:ARG:O	1:C:1157:LYS:HG3	2.21	0.41
1:C:1167:ARG:HG2	1:C:1167:ARG:NH1	2.35	0.41

Continued on next page...

Continued from previous page...

Atom-1	Atom-2	Interatomic distance (Å)	Clash overlap (Å)
1:A:29:ARG:NH1	1:A:29:ARG:HG3	2.36	0.41
1:B:609[B]:ARG:NE	1:B:619:GLU:OE2	2.54	0.41
3:B:3002:2PE:H122	3:B:3002:2PE:C27	2.50	0.41
1:C:1086:ILE:O	1:C:1099:LEU:HA	2.21	0.40
1:B:578:LEU:CD1	1:B:609[B]:ARG:HD2	2.43	0.40
1:A:91:LEU:HA	3:A:3000:2PE:H271	2.03	0.40
1:C:1159:GLU:O	1:C:1163:ARG:HB2	2.21	0.40

There are no symmetry-related clashes.

5.3 Torsion angles [i](#)

5.3.1 Protein backbone [i](#)

In the following table, the Percentiles column shows the percent Ramachandran outliers of the chain as a percentile score with respect to all X-ray entries followed by that with respect to entries of similar resolution.

The Analysed column shows the number of residues for which the backbone conformation was analysed, and the total number of residues.

Mol	Chain	Analysed	Favoured	Allowed	Outliers	Percentiles	
1	A	174/168 (104%)	165 (95%)	9 (5%)	0	100	100
1	B	176/168 (105%)	173 (98%)	3 (2%)	0	100	100
1	C	169/168 (101%)	164 (97%)	5 (3%)	0	100	100
All	All	519/504 (103%)	502 (97%)	17 (3%)	0	100	100

There are no Ramachandran outliers to report.

5.3.2 Protein sidechains [i](#)

In the following table, the Percentiles column shows the percent sidechain outliers of the chain as a percentile score with respect to all X-ray entries followed by that with respect to entries of similar resolution.

The Analysed column shows the number of residues for which the sidechain conformation was analysed, and the total number of residues.

Mol	Chain	Analysed	Rotameric	Outliers	Percentiles	
1	A	156/148 (105%)	143 (92%)	13 (8%)	11	4
1	B	158/148 (107%)	143 (90%)	15 (10%)	8	3
1	C	151/148 (102%)	135 (89%)	16 (11%)	6	2
All	All	465/444 (105%)	421 (90%)	44 (10%)	9	3

All (44) residues with a non-rotameric sidechain are listed below:

Mol	Chain	Res	Type
1	A	11[A]	GLU
1	A	11[B]	GLU
1	A	13	LEU
1	A	14	ARG
1	A	29	ARG
1	A	49	THR
1	A	84	THR
1	A	106	VAL
1	A	125	LEU
1	A	126	LEU
1	A	164	LEU
1	A	165	LYS
1	A	167	ARG
1	B	511	GLU
1	B	513	LEU
1	B	518[A]	LYS
1	B	518[B]	LYS
1	B	518[C]	LYS
1	B	549	THR
1	B	584	THR
1	B	586	ILE
1	B	606	VAL
1	B	616[A]	LYS
1	B	616[B]	LYS
1	B	625	LEU
1	B	626	LEU
1	B	650	LYS
1	B	667	ARG
1	C	1013	LEU
1	C	1014	ARG
1	C	1049	THR
1	C	1084	THR
1	C	1097	ARG
1	C	1106	VAL

Continued on next page...

Continued from previous page...

Mol	Chain	Res	Type
1	C	1125	LEU
1	C	1126	LEU
1	C	1149	LEU
1	C	1150	LYS
1	C	1153	ARG
1	C	1155	ARG
1	C	1160	LYS
1	C	1161	LEU
1	C	1163	ARG
1	C	1165	LYS

Sometimes sidechains can be flipped to improve hydrogen bonding and reduce clashes. All (3) such sidechains are listed below:

Mol	Chain	Res	Type
1	A	65	ASN
1	B	652	GLN
1	C	1131	GLN

5.3.3 RNA [i](#)

There are no RNA molecules in this entry.

5.4 Non-standard residues in protein, DNA, RNA chains [i](#)

There are no non-standard protein/DNA/RNA residues in this entry.

5.5 Carbohydrates [i](#)

There are no monosaccharides in this entry.

5.6 Ligand geometry [i](#)

Of 8 ligands modelled in this entry, 3 are monoatomic - leaving 5 for Mogul analysis.

In the following table, the Counts columns list the number of bonds (or angles) for which Mogul statistics could be retrieved, the number of bonds (or angles) that are observed in the model and the number of bonds (or angles) that are defined in the Chemical Component Dictionary. The Link column lists molecule types, if any, to which the group is linked. The Z score for a bond length (or angle) is the number of standard deviations the observed value is removed from the

expected value. A bond length (or angle) with $|Z| > 2$ is considered an outlier worth inspection. RMSZ is the root-mean-square of all Z scores of the bond lengths (or angles).

Mol	Type	Chain	Res	Link	Bond lengths			Bond angles		
					Counts	RMSZ	# $ Z > 2$	Counts	RMSZ	# $ Z > 2$
3	2PE	C	3003	-	27,27,27	0.85	0	26,26,26	0.43	0
4	SO4	C	3002	-	4,4,4	0.18	0	6,6,6	0.27	0
4	SO4	C	3001	-	4,4,4	0.30	0	6,6,6	0.27	0
3	2PE	B	3002	-	27,27,27	0.69	0	26,26,26	0.54	0
3	2PE	A	3000	-	27,27,27	0.71	0	26,26,26	0.49	0

In the following table, the Chirals column lists the number of chiral outliers, the number of chiral centers analysed, the number of these observed in the model and the number defined in the Chemical Component Dictionary. Similar counts are reported in the Torsion and Rings columns. '-' means no outliers of that kind were identified.

Mol	Type	Chain	Res	Link	Chirals	Torsions	Rings
3	2PE	C	3003	-	-	11/25/25/25	-
3	2PE	B	3002	-	-	8/25/25/25	-
3	2PE	A	3000	-	-	15/25/25/25	-

There are no bond length outliers.

There are no bond angle outliers.

There are no chirality outliers.

All (34) torsion outliers are listed below:

Mol	Chain	Res	Type	Atoms
3	A	3000	2PE	O7-C8-C9-O10
3	A	3000	2PE	O25-C26-C27-O28
3	B	3002	2PE	O4-C5-C6-O7
3	B	3002	2PE	O25-C26-C27-O28
3	C	3003	2PE	O10-C11-C12-O13
3	C	3003	2PE	O13-C14-C15-O16
3	B	3002	2PE	O1-C2-C3-O4
3	A	3000	2PE	O19-C20-C21-O22
3	C	3003	2PE	O7-C8-C9-O10
3	A	3000	2PE	O22-C23-C24-O25
3	C	3003	2PE	O1-C2-C3-O4
3	A	3000	2PE	O10-C11-C12-O13
3	B	3002	2PE	O10-C11-C12-O13
3	A	3000	2PE	O1-C2-C3-O4
3	A	3000	2PE	C24-C23-O22-C21

Continued on next page...

Continued from previous page...

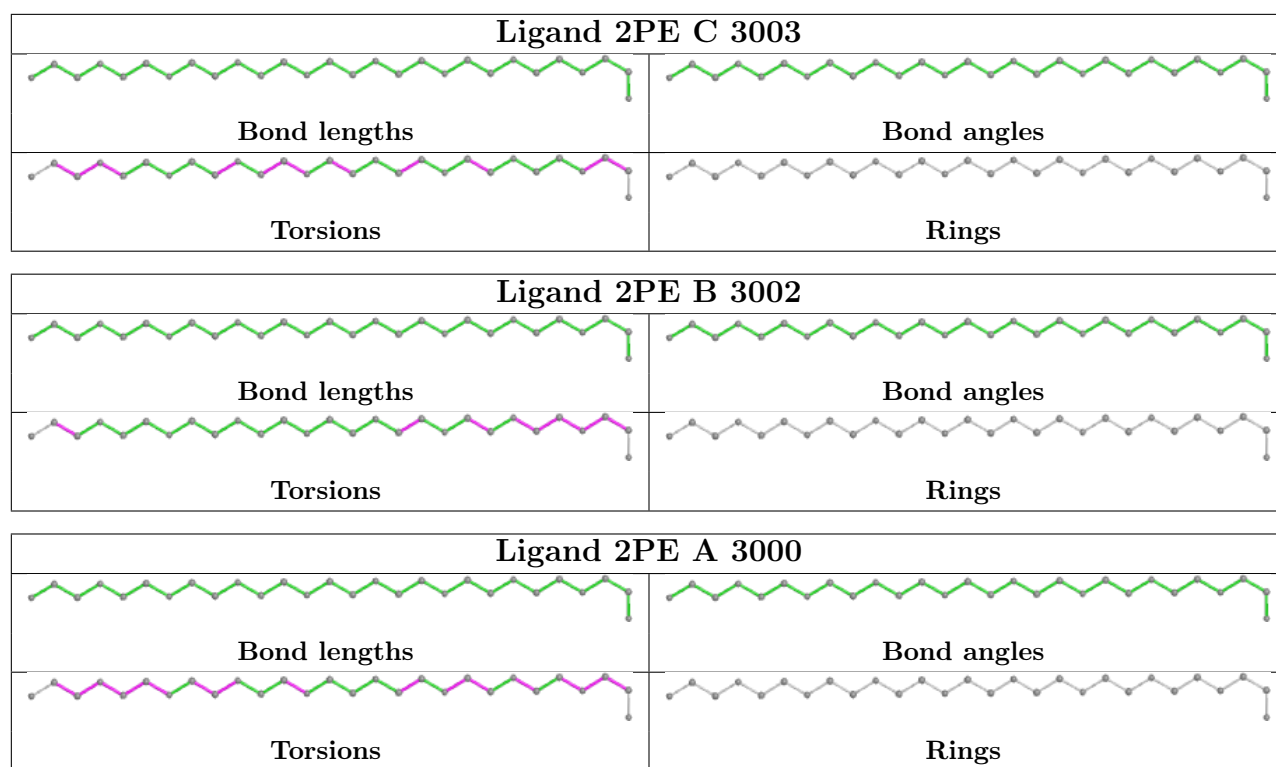
Mol	Chain	Res	Type	Atoms
3	B	3002	2PE	C5-C6-O7-C8
3	C	3003	2PE	C2-C3-O4-C5
3	C	3003	2PE	C27-C26-O25-C24
3	A	3000	2PE	C8-C9-O10-C11
3	A	3000	2PE	C2-C3-O4-C5
3	A	3000	2PE	C27-C26-O25-C24
3	C	3003	2PE	C21-C20-O19-C18
3	C	3003	2PE	O25-C26-C27-O28
3	A	3000	2PE	C18-C17-O16-C15
3	A	3000	2PE	C6-C5-O4-C3
3	A	3000	2PE	C5-C6-O7-C8
3	C	3003	2PE	C18-C17-O16-C15
3	C	3003	2PE	C23-C24-O25-C26
3	B	3002	2PE	C2-C3-O4-C5
3	B	3002	2PE	C6-C5-O4-C3
3	A	3000	2PE	C21-C20-O19-C18
3	B	3002	2PE	O7-C8-C9-O10
3	C	3003	2PE	O16-C17-C18-O19
3	A	3000	2PE	C23-C24-O25-C26

There are no ring outliers.

4 monomers are involved in 30 short contacts:

Mol	Chain	Res	Type	Clashes	Symm-Clashes
3	C	3003	2PE	10	0
4	C	3001	SO4	1	0
3	B	3002	2PE	15	0
3	A	3000	2PE	4	0

The following is a two-dimensional graphical depiction of Mogul quality analysis of bond lengths, bond angles, torsion angles, and ring geometry for all instances of the Ligand of Interest. In addition, ligands with molecular weight > 250 and outliers as shown on the validation Tables will also be included. For torsion angles, if less than 5% of the Mogul distribution of torsion angles is within 10 degrees of the torsion angle in question, then that torsion angle is considered an outlier. Any bond that is central to one or more torsion angles identified as an outlier by Mogul will be highlighted in the graph. For rings, the root-mean-square deviation (RMSD) between the ring in question and similar rings identified by Mogul is calculated over all ring torsion angles. If the average RMSD is greater than 60 degrees and the minimal RMSD between the ring in question and any Mogul-identified rings is also greater than 60 degrees, then that ring is considered an outlier. The outliers are highlighted in purple. The color gray indicates Mogul did not find sufficient equivalents in the CSD to analyse the geometry.



5.7 Other polymers [i](#)

There are no such residues in this entry.

5.8 Polymer linkage issues [i](#)

There are no chain breaks in this entry.

6 Fit of model and data

6.1 Protein, DNA and RNA chains

In the following table, the column labelled ‘#RSRZ > 2’ contains the number (and percentage) of RSRZ outliers, followed by percent RSRZ outliers for the chain as percentile scores relative to all X-ray entries and entries of similar resolution. The OWAB column contains the minimum, median, 95th percentile and maximum values of the occupancy-weighted average B-factor per residue. The column labelled ‘Q < 0.9’ lists the number of (and percentage) of residues with an average occupancy less than 0.9.

Mol	Chain	Analysed	<RSRZ>	#RSRZ>2	OWAB(Å ²)	Q<0.9
1	A	168/168 (100%)	0.23	13 (7%) 13 15	16, 27, 48, 72	0
1	B	168/168 (100%)	0.00	7 (4%) 36 39	13, 24, 43, 72	0
1	C	168/168 (100%)	0.10	12 (7%) 16 17	14, 25, 49, 84	0
All	All	504/504 (100%)	0.11	32 (6%) 20 22	13, 25, 48, 84	0

All (32) RSRZ outliers are listed below:

Mol	Chain	Res	Type	RSRZ
1	C	1168	ALA	10.9
1	C	1166	ALA	9.0
1	B	668	ALA	8.5
1	A	167	ARG	6.5
1	C	1167	ARG	5.8
1	A	168	ALA	5.5
1	B	667	ARG	5.5
1	A	29	ARG	5.5
1	B	664	LEU	5.2
1	A	165	LYS	4.5
1	C	1165	LYS	4.5
1	C	1164	LEU	4.4
1	B	649[A]	LEU	4.1
1	A	166	ALA	4.1
1	C	1149	LEU	4.1
1	B	665	LYS	3.9
1	C	1163	ARG	3.5
1	C	1161	LEU	3.4
1	B	658	VAL	3.3
1	C	1153	ARG	3.2
1	A	116	LYS	3.1
1	A	66	ARG	3.0
1	A	161	LEU	2.9

Continued on next page...

Continued from previous page...

Mol	Chain	Res	Type	RSRZ
1	B	666	ALA	2.8
1	A	155[A]	ARG	2.7
1	A	25	ALA	2.6
1	C	1152	GLN	2.6
1	C	1155	ARG	2.5
1	A	65	ASN	2.4
1	C	1158	VAL	2.1
1	A	1	SER	2.0
1	A	9	PRO	2.0

6.2 Non-standard residues in protein, DNA, RNA chains [i](#)

There are no non-standard protein/DNA/RNA residues in this entry.

6.3 Carbohydrates [i](#)

There are no monosaccharides in this entry.

6.4 Ligands [i](#)

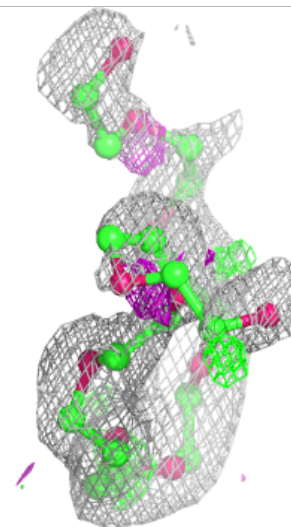
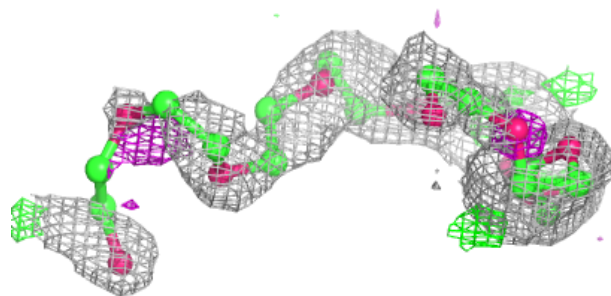
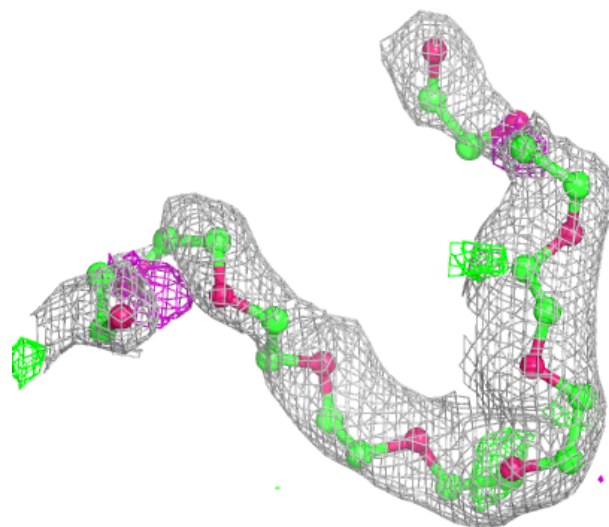
In the following table, the Atoms column lists the number of modelled atoms in the group and the number defined in the chemical component dictionary. The B-factors column lists the minimum, median, 95th percentile and maximum values of B factors of atoms in the group. The column labelled 'Q< 0.9' lists the number of atoms with occupancy less than 0.9.

Mol	Type	Chain	Res	Atoms	RSCC	RSR	B-factors(\AA^2)	Q<0.9
3	2PE	A	3000	28/28	0.68	0.25	48,58,65,66	0
3	2PE	C	3003	28/28	0.68	0.30	54,62,66,66	0
3	2PE	B	3002	28/28	0.70	0.28	50,58,73,73	0
4	SO4	C	3001	5/5	0.93	0.15	50,51,52,52	0
2	FE	A	2001	1/1	0.96	0.04	34,34,34,34	0
4	SO4	C	3002	5/5	0.96	0.16	44,45,47,48	0
2	FE	C	2003	1/1	0.97	0.08	40,40,40,40	0
2	FE	B	2002	1/1	1.00	0.03	26,26,26,26	0

The following is a graphical depiction of the model fit to experimental electron density of all instances of the Ligand of Interest. In addition, ligands with molecular weight > 250 and outliers as shown on the geometry validation Tables will also be included. Each fit is shown from different orientation to approximate a three-dimensional view.

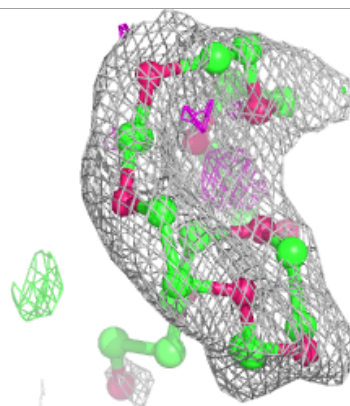
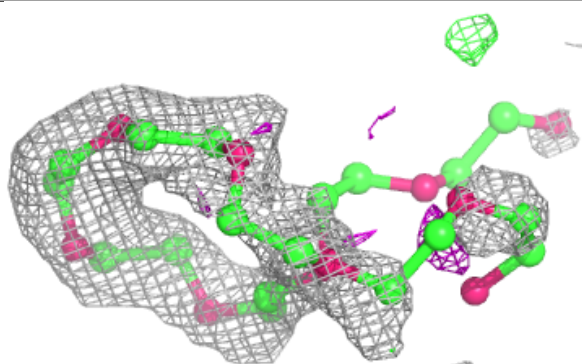
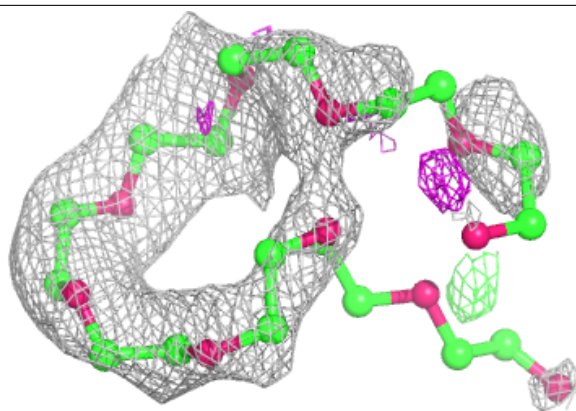
Electron density around 2PE A 3000:

$2mF_o-DF_c$ (at 0.7 rmsd) in gray
 mF_o-DF_c (at 3 rmsd) in purple (negative)
and green (positive)

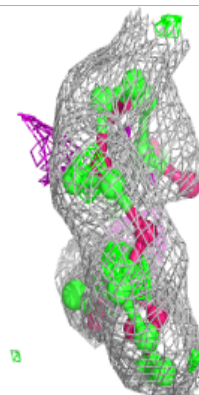
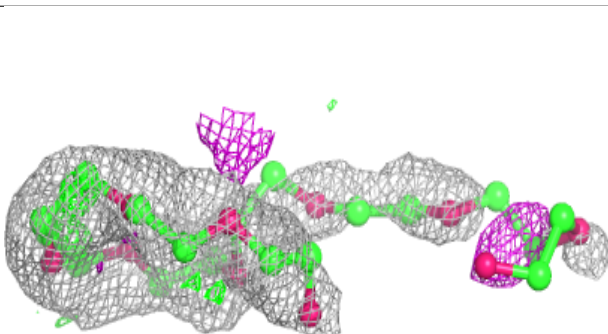
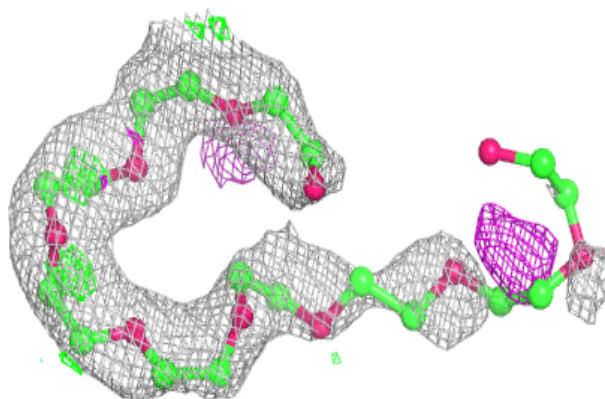


Electron density around 2PE C 3003:

$2mF_o-DF_c$ (at 0.7 rmsd) in gray
 mF_o-DF_c (at 3 rmsd) in purple (negative)
and green (positive)

**Electron density around 2PE B 3002:**

$2mF_o-DF_c$ (at 0.7 rmsd) in gray
 mF_o-DF_c (at 3 rmsd) in purple (negative)
and green (positive)



6.5 Other polymers [i](#)

There are no such residues in this entry.