



Full wwPDB X-ray Structure Validation Report ⓘ

Sep 25, 2023 – 05:32 PM EDT

PDB ID : 6BSN
Title : Structure of proline utilization A (PutA) with proline bound in remote sites
Authors : Tanner, J.J.; Korasick, D.A.
Deposited on : 2017-12-04
Resolution : 2.15 Å(reported)

This is a Full wwPDB X-ray Structure Validation Report for a publicly released PDB entry.

We welcome your comments at validation@mail.wwpdb.org

A user guide is available at

<https://www.wwpdb.org/validation/2017/XrayValidationReportHelp>

with specific help available everywhere you see the ⓘ symbol.

The types of validation reports are described at

<http://www.wwpdb.org/validation/2017/FAQs#types>.

The following versions of software and data (see [references ⓘ](#)) were used in the production of this report:

MolProbity : 4.02b-467
Mogul : 1.8.5 (274361), CSD as541be (2020)
Xtriage (Phenix) : 1.13
EDS : 2.35.1
buster-report : 1.1.7 (2018)
Percentile statistics : 20191225.v01 (using entries in the PDB archive December 25th 2019)
Refmac : 5.8.0158
CCP4 : 7.0.044 (Gargrove)
Ideal geometry (proteins) : Engh & Huber (2001)
Ideal geometry (DNA, RNA) : Parkinson et al. (1996)
Validation Pipeline (wwPDB-VP) : 2.35.1

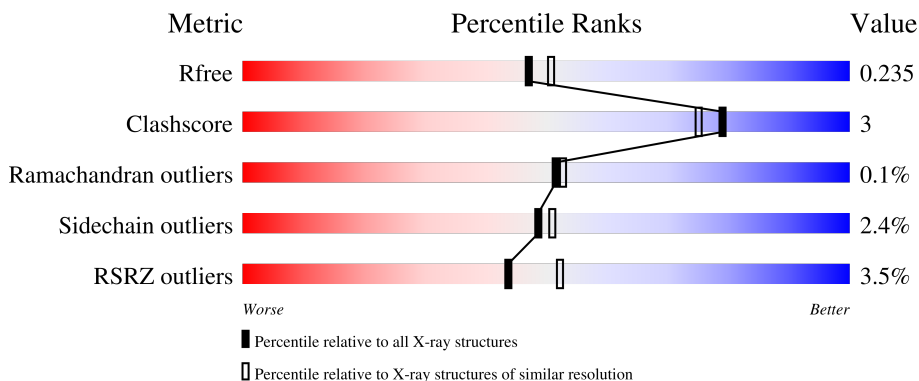
1 Overall quality at a glance

The following experimental techniques were used to determine the structure:

X-RAY DIFFRACTION

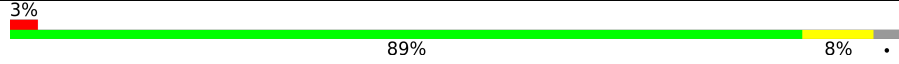
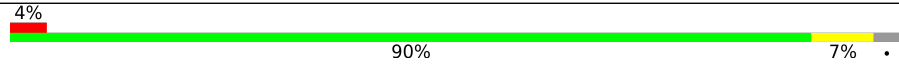
The reported resolution of this entry is 2.15 Å.

Percentile scores (ranging between 0-100) for global validation metrics of the entry are shown in the following graphic. The table shows the number of entries on which the scores are based.



Metric	Whole archive (#Entries)	Similar resolution (#Entries, resolution range(Å))
R_{free}	130704	1479 (2.16-2.16)
Clashscore	141614	1585 (2.16-2.16)
Ramachandran outliers	138981	1560 (2.16-2.16)
Sidechain outliers	138945	1559 (2.16-2.16)
RSRZ outliers	127900	1456 (2.16-2.16)

The table below summarises the geometric issues observed across the polymeric chains and their fit to the electron density. The red, orange, yellow and green segments of the lower bar indicate the fraction of residues that contain outliers for ≥ 3 , 2, 1 and 0 types of geometric quality criteria respectively. A grey segment represents the fraction of residues that are not modelled. The numeric value for each fraction is indicated below the corresponding segment, with a dot representing fractions $\leq 5\%$. The upper red bar (where present) indicates the fraction of residues that have poor fit to the electron density. The numeric value is given above the bar.

Mol	Chain	Length	Quality of chain
1	A	1001	
1	B	1001	

The following table lists non-polymeric compounds, carbohydrate monomers and non-standard residues in protein, DNA, RNA chains that are outliers for geometric or electron-density-fit criteria:

Mol	Type	Chain	Res	Chirality	Geometry	Clashes	Electron density
4	SO4	A	2009	-	-	X	-

2 Entry composition [i](#)

There are 5 unique types of molecules in this entry. The entry contains 15507 atoms, of which 0 are hydrogens and 0 are deuteriums.

In the tables below, the ZeroOcc column contains the number of atoms modelled with zero occupancy, the AltConf column contains the number of residues with at least one atom in alternate conformation and the Trace column contains the number of residues modelled with at most 2 atoms.

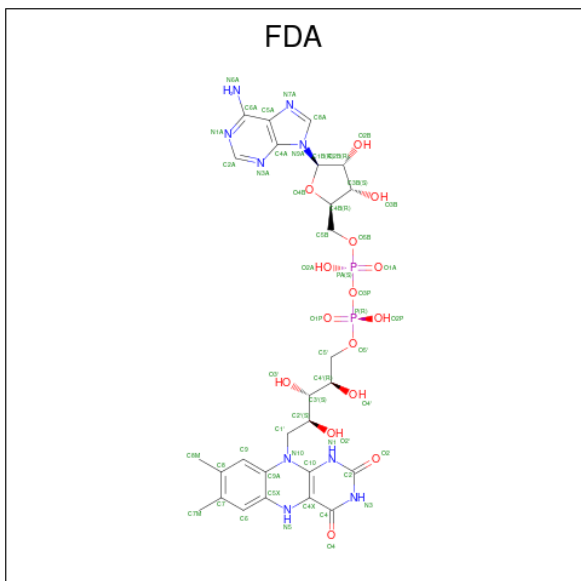
- Molecule 1 is a protein called Bifunctional protein PutA.

Mol	Chain	Residues	Atoms					ZeroOcc	AltConf	Trace
			Total	C	N	O	S			
1	A	973	Total 7269	C 4591	N 1316	O 1340	S 22	0	2	0
1	B	973	Total 7271	C 4593	N 1311	O 1345	S 22	0	1	0

There are 6 discrepancies between the modelled and reference sequences:

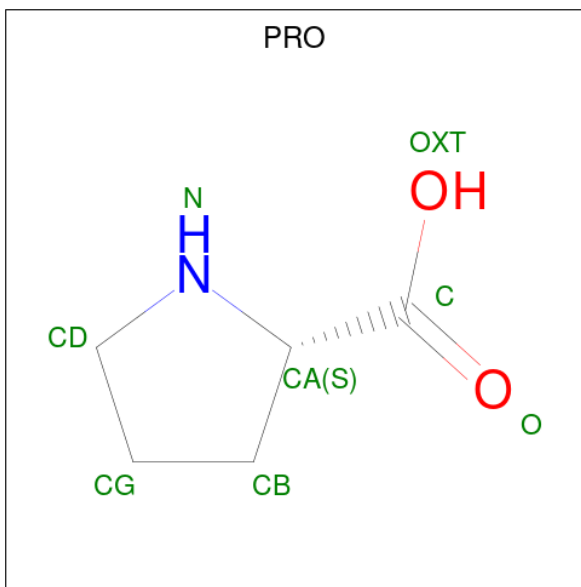
Chain	Residue	Modelled	Actual	Comment	Reference
A	-1	GLY	-	expression tag	UNP Q89E26
A	0	HIS	-	expression tag	UNP Q89E26
A	792	ALA	CYS	engineered mutation	UNP Q89E26
B	-1	GLY	-	expression tag	UNP Q89E26
B	0	HIS	-	expression tag	UNP Q89E26
B	792	ALA	CYS	engineered mutation	UNP Q89E26

- Molecule 2 is DIHYDROFLAVINE-ADENINE DINUCLEOTIDE (three-letter code: FDA) (formula: C₂₇H₃₅N₉O₁₅P₂).



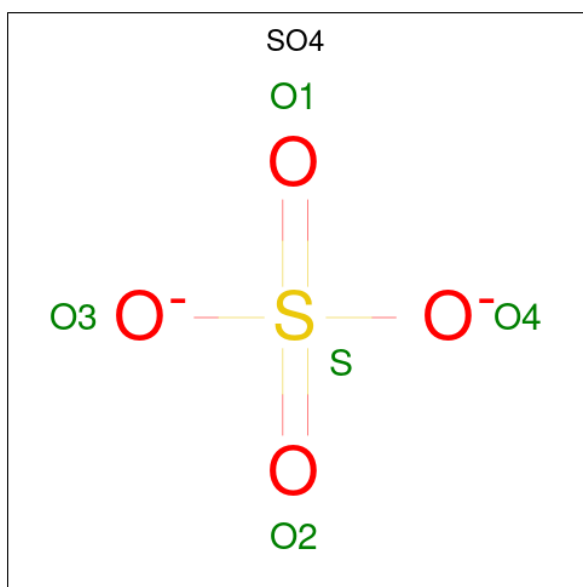
Mol	Chain	Residues	Atoms					ZeroOcc	AltConf
			Total	C	N	O	P		
2	A	1	53	27	9	15	2	0	0
2	B	1	53	27	9	15	2	0	0

- Molecule 3 is PROLINE (three-letter code: PRO) (formula: C₅H₉NO₂).



Mol	Chain	Residues	Atoms				ZeroOcc	AltConf
			Total	C	N	O		
3	A	1	8	5	1	2	0	0
3	A	1	8	5	1	2	0	0
3	A	1	8	5	1	2	0	0
3	A	1	8	5	1	2	0	0
3	A	1	8	5	1	2	0	0
3	B	1	8	5	1	2	0	0
3	B	1	8	5	1	2	0	0
3	B	1	8	5	1	2	0	0
3	B	1	8	5	1	2	0	0

- Molecule 4 is SULFATE ION (three-letter code: SO4) (formula: O₄S).



Mol	Chain	Residues	Atoms	ZeroOcc	AltConf
4	A	1	Total O S 5 4 1	0	0
4	A	1	Total O S 5 4 1	0	0
4	A	1	Total O S 5 4 1	0	0
4	A	1	Total O S 5 4 1	0	0
4	A	1	Total O S 5 4 1	0	0
4	A	1	Total O S 5 4 1	0	0
4	A	1	Total O S 5 4 1	0	0
4	B	1	Total O S 5 4 1	0	0
4	B	1	Total O S 5 4 1	0	0
4	B	1	Total O S 5 4 1	0	0
4	B	1	Total O S 5 4 1	0	0
4	B	1	Total O S 5 4 1	0	0
4	B	1	Total O S 5 4 1	0	0

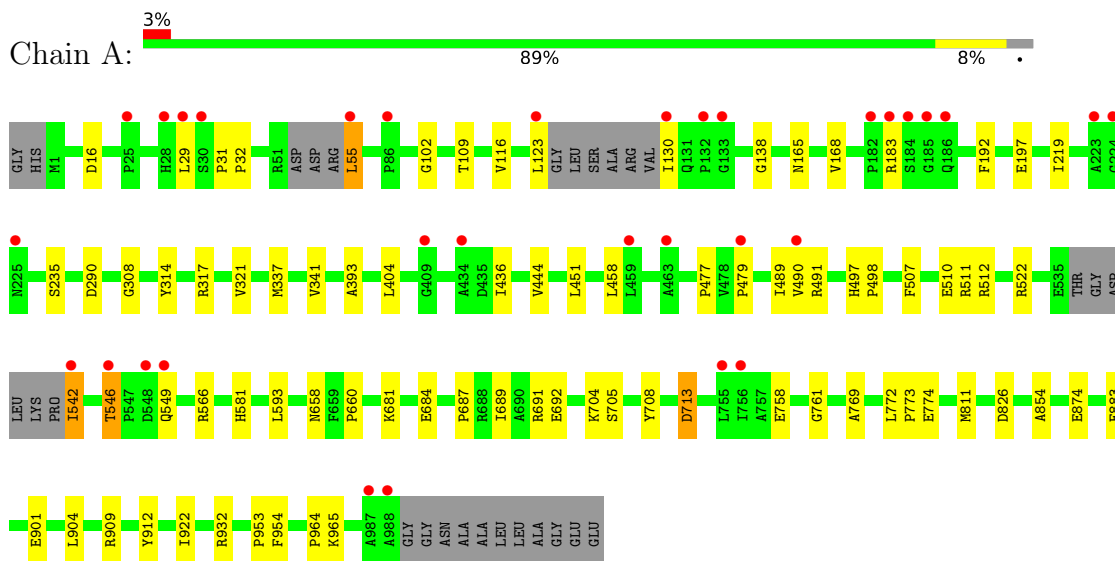
- Molecule 5 is water.

Mol	Chain	Residues	Atoms		ZeroOcc	AltConf
5	A	400	Total 400	O 400	0	0
5	B	319	Total 319	O 319	0	0

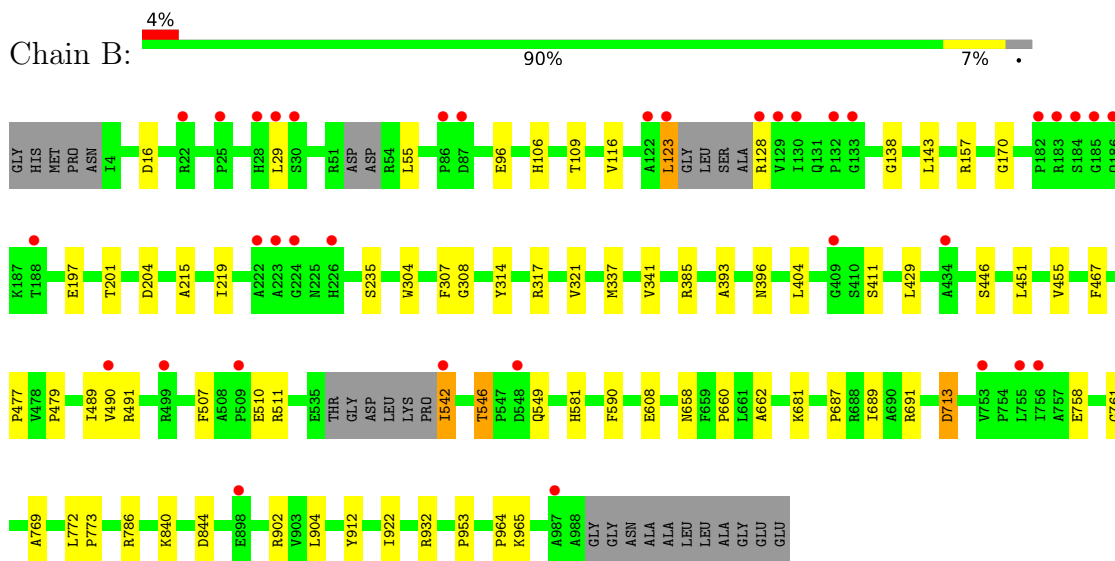
3 Residue-property plots i

These plots are drawn for all protein, RNA, DNA and oligosaccharide chains in the entry. The first graphic for a chain summarises the proportions of the various outlier classes displayed in the second graphic. The second graphic shows the sequence view annotated by issues in geometry and electron density. Residues are color-coded according to the number of geometric quality criteria for which they contain at least one outlier: green = 0, yellow = 1, orange = 2 and red = 3 or more. A red dot above a residue indicates a poor fit to the electron density ($RSRZ > 2$). Stretches of 2 or more consecutive residues without any outlier are shown as a green connector. Residues present in the sample, but not in the model, are shown in grey.

- Molecule 1: Bifunctional protein PutA



- Molecule 1: Bifunctional protein PutA



4 Data and refinement statistics

Property	Value	Source
Space group	C 1 2 1	Depositor
Cell constants a, b, c, α , β , γ	166.76Å 194.21Å 108.74Å 90.00° 121.39° 90.00°	Depositor
Resolution (Å)	47.02 – 2.15 47.02 – 2.15	Depositor EDS
% Data completeness (in resolution range)	98.3 (47.02-2.15) 99.1 (47.02-2.15)	Depositor EDS
R_{merge}	0.09	Depositor
R_{sym}	(Not available)	Depositor
$\langle I/\sigma(I) \rangle$ ¹	2.14 (at 2.16Å)	Xtrriage
Refinement program	PHENIX	Depositor
R, R_{free}	0.209 , 0.239 0.205 , 0.235	Depositor DCC
R_{free} test set	7949 reflections (5.02%)	wwPDB-VP
Wilson B-factor (Å ²)	31.3	Xtrriage
Anisotropy	0.318	Xtrriage
Bulk solvent k_{sol} (e/Å ³), B_{sol} (Å ²)	0.35 , 39.9	EDS
L-test for twinning ²	$\langle L \rangle = 0.50$, $\langle L^2 \rangle = 0.33$	Xtrriage
Estimated twinning fraction	No twinning to report.	Xtrriage
F_o, F_c correlation	0.94	EDS
Total number of atoms	15507	wwPDB-VP
Average B, all atoms (Å ²)	39.0	wwPDB-VP

Xtrriage's analysis on translational NCS is as follows: *The largest off-origin peak in the Patterson function is 12.49% of the height of the origin peak. No significant pseudotranslation is detected.*

¹Intensities estimated from amplitudes.

²Theoretical values of $\langle |L| \rangle$, $\langle L^2 \rangle$ for acentric reflections are 0.5, 0.333 respectively for untwinned datasets, and 0.375, 0.2 for perfectly twinned datasets.

5 Model quality

5.1 Standard geometry

Bond lengths and bond angles in the following residue types are not validated in this section: SO4, FDA

The Z score for a bond length (or angle) is the number of standard deviations the observed value is removed from the expected value. A bond length (or angle) with $|Z| > 5$ is considered an outlier worth inspection. RMSZ is the root-mean-square of all Z scores of the bond lengths (or angles).

Mol	Chain	Bond lengths		Bond angles	
		RMSZ	# Z >5	RMSZ	# Z >5
1	A	0.41	0/7417	0.57	0/10086
1	B	0.38	0/7415	0.55	0/10082
All	All	0.40	0/14832	0.56	0/20168

There are no bond length outliers.

There are no bond angle outliers.

There are no chirality outliers.

There are no planarity outliers.

5.2 Too-close contacts

In the following table, the Non-H and H(model) columns list the number of non-hydrogen atoms and hydrogen atoms in the chain respectively. The H(added) column lists the number of hydrogen atoms added and optimized by MolProbity. The Clashes column lists the number of clashes within the asymmetric unit, whereas Symm-Clashes lists symmetry-related clashes.

Mol	Chain	Non-H	H(model)	H(added)	Clashes	Symm-Clashes
1	A	7269	0	7244	42	0
1	B	7271	0	7237	38	0
2	A	53	0	33	1	0
2	B	53	0	33	0	0
3	A	40	0	35	2	0
3	B	32	0	28	2	0
4	A	35	0	0	2	0
4	B	35	0	0	1	0
5	A	400	0	0	3	0
5	B	319	0	0	1	0
All	All	15507	0	14610	81	0

The all-atom clashscore is defined as the number of clashes found per 1000 atoms (including hydrogen atoms). The all-atom clashscore for this structure is 3.

All (81) close contacts within the same asymmetric unit are listed below, sorted by their clash magnitude.

Atom-1	Atom-2	Interatomic distance (Å)	Clash overlap (Å)
1:A:512:ARG:NH1	4:A:2009:SO4:O1	2.22	0.73
1:A:964:PRO:HB3	3:B:1003:PRO:HB3	1.69	0.72
3:A:2003:PRO:HB3	1:B:964:PRO:HB3	1.73	0.70
1:B:581:HIS:ND1	4:B:1008:SO4:O1	2.28	0.65
1:B:660:PRO:HB2	1:B:689:ILE:HG21	1.79	0.65
1:A:546:THR:HG23	1:A:549:GLN:H	1.63	0.63
1:B:546:THR:HG23	1:B:549:GLN:H	1.62	0.63
1:A:581:HIS:ND1	4:A:2009:SO4:O4	2.30	0.62
1:A:477:PRO:HB2	1:A:479:PRO:HD2	1.82	0.61
1:A:55:LEU:HD21	1:A:165:ASN:HD22	1.67	0.60
1:B:451:LEU:HB3	1:B:772:LEU:HD13	1.84	0.59
1:A:901:GLU:OE1	1:A:932:ARG:NH2	2.32	0.57
1:A:308:GLY:HA3	1:A:337:MET:O	2.03	0.57
1:B:477:PRO:HB2	1:B:479:PRO:HD2	1.88	0.55
1:A:566:ARG:HH11	1:B:932:ARG:HA	1.72	0.55
1:B:507:PHE:O	1:B:510:GLU:HG2	2.06	0.55
1:A:116:VAL:HG11	1:A:773:PRO:HG2	1.90	0.54
1:A:542:ILE:HD12	1:A:687:PRO:HG2	1.89	0.54
1:B:109:THR:HG23	1:B:769:ALA:HB3	1.88	0.54
1:B:106:HIS:CD2	1:B:128:ARG:HD2	2.43	0.54
1:B:840:LYS:NZ	1:B:844:ASP:OD2	2.37	0.54
1:B:116:VAL:HG11	1:B:773:PRO:HG2	1.91	0.53
1:A:901:GLU:CD	1:A:932:ARG:HH22	2.12	0.53
1:B:308:GLY:HA3	1:B:337:MET:O	2.08	0.52
1:B:761:GLY:HA2	1:B:912:TYR:CD1	2.45	0.52
1:A:451:LEU:HB3	1:A:772:LEU:HD13	1.91	0.52
1:B:317:ARG:O	1:B:321:VAL:HG23	2.10	0.51
1:A:904:LEU:HD13	1:A:932:ARG:HG2	1.91	0.51
1:A:542:ILE:HD13	1:A:691:ARG:HD3	1.94	0.50
1:A:109:THR:HG23	1:A:769:ALA:HB3	1.92	0.50
1:A:341:VAL:HG12	1:A:393:ALA:HB3	1.94	0.49
1:B:590:PHE:HD2	1:B:689:ILE:HD11	1.79	0.48
1:B:904:LEU:HD13	1:B:932:ARG:HG2	1.96	0.48
1:B:542:ILE:HD12	1:B:687:PRO:HG2	1.95	0.48
1:A:290:ASP:OD2	1:A:522:ARG:NH2	2.38	0.47
1:A:192:PHE:CE2	1:A:219:ILE:HG23	2.50	0.47
1:B:396:ASN:HA	1:B:467:PHE:CD2	2.49	0.47

Continued on next page...

Continued from previous page...

Atom-1	Atom-2	Interatomic distance (Å)	Clash overlap (Å)
1:A:826:ASP:HB3	5:A:2424:HOH:O	2.14	0.47
1:B:404:LEU:HD22	1:B:429:LEU:HD11	1.97	0.47
1:A:593:LEU:HD11	1:A:692:GLU:HG3	1.97	0.46
1:A:684:GLU:OE1	1:A:713:ASP:HA	2.16	0.46
1:A:458:LEU:HD23	1:A:458:LEU:HA	1.72	0.46
1:B:608:GLU:HG3	1:B:662:ALA:HB2	1.98	0.45
3:B:1003:PRO:HA	5:B:1182:HOH:O	2.16	0.45
1:A:109:THR:HG22	5:A:2219:HOH:O	2.15	0.45
1:B:138:GLY:HA2	1:B:922:ILE:HG23	1.98	0.45
1:A:507:PHE:O	1:A:510:GLU:HG2	2.16	0.45
1:A:705:SER:HA	1:A:708:TYR:OH	2.18	0.44
1:A:761:GLY:HA2	1:A:912:TYR:CD1	2.53	0.44
1:A:953:PRO:HB2	1:A:965:LYS:HD3	2.00	0.43
1:B:489:ILE:O	1:B:491:ARG:N	2.45	0.43
1:B:215:ALA:O	1:B:219:ILE:HG12	2.18	0.43
1:B:304:TRP:CZ3	1:B:307:PHE:HB2	2.54	0.43
1:A:854:ALA:HB1	1:A:874:GLU:O	2.18	0.43
2:A:2001:FDA:H8A	5:A:2358:HOH:O	2.18	0.42
1:B:143:LEU:HD12	1:B:143:LEU:HA	1.88	0.42
1:B:713:ASP:OD2	1:B:713:ASP:N	2.47	0.42
1:A:774:GLU:HA	1:A:811:MET:SD	2.59	0.42
1:B:201:THR:O	1:B:204:ASP:HB2	2.19	0.42
1:B:451:LEU:O	1:B:455:VAL:HG23	2.20	0.42
1:A:436:ILE:HD13	1:A:436:ILE:HA	1.87	0.42
1:B:123:LEU:N	1:B:123:LEU:HD12	2.34	0.42
1:A:138:GLY:HA2	1:A:922:ILE:HG23	2.02	0.41
1:B:96:GLU:HG2	1:B:157:ARG:HH22	1.85	0.41
1:B:542:ILE:HD13	1:B:691:ARG:HD3	2.03	0.41
1:B:953:PRO:HB2	1:B:965:LYS:HD3	2.02	0.41
1:B:341:VAL:HG12	1:B:393:ALA:HB3	2.02	0.41
1:A:102:GLY:HA3	1:A:130:ILE:HG21	2.02	0.41
1:B:170:GLY:O	1:B:446:SER:HA	2.21	0.41
1:A:660:PRO:HB2	1:A:689:ILE:HG21	2.03	0.41
1:A:404:LEU:HD13	1:A:436:ILE:HD11	2.03	0.41
1:A:954:PHE:CE1	3:A:2002:PRO:HG2	2.55	0.41
1:A:31:PRO:HB2	1:A:32:PRO:HD3	2.03	0.41
1:A:497:HIS:ND1	1:A:498:PRO:HD2	2.35	0.41
1:A:168:VAL:HB	1:A:444:VAL:HG22	2.02	0.41
1:B:109:THR:CG2	1:B:769:ALA:HB3	2.51	0.40
1:B:385:ARG:NH1	1:B:411:SER:O	2.54	0.40
1:A:317:ARG:O	1:A:321:VAL:HG23	2.21	0.40

Continued on next page...

Continued from previous page...

Atom-1	Atom-2	Interatomic distance (Å)	Clash overlap (Å)
1:A:489:ILE:O	1:A:491:ARG:N	2.49	0.40
1:B:489:ILE:O	1:B:490:VAL:HG22	2.22	0.40
1:A:566:ARG:HH21	1:A:566:ARG:HG3	1.87	0.40

There are no symmetry-related clashes.

5.3 Torsion angles [i](#)

5.3.1 Protein backbone [i](#)

In the following table, the Percentiles column shows the percent Ramachandran outliers of the chain as a percentile score with respect to all X-ray entries followed by that with respect to entries of similar resolution.

The Analysed column shows the number of residues for which the backbone conformation was analysed, and the total number of residues.

Mol	Chain	Analysed	Favoured	Allowed	Outliers	Percentiles
1	A	967/1001 (97%)	951 (98%)	15 (2%)	1 (0%)	51 53
1	B	966/1001 (96%)	951 (98%)	15 (2%)	0	100 100
All	All	1933/2002 (97%)	1902 (98%)	30 (2%)	1 (0%)	51 53

All (1) Ramachandran outliers are listed below:

Mol	Chain	Res	Type
1	A	490	VAL

5.3.2 Protein sidechains [i](#)

In the following table, the Percentiles column shows the percent sidechain outliers of the chain as a percentile score with respect to all X-ray entries followed by that with respect to entries of similar resolution.

The Analysed column shows the number of residues for which the sidechain conformation was analysed, and the total number of residues.

Mol	Chain	Analysed	Rotameric	Outliers	Percentiles
1	A	712/757 (94%)	694 (98%)	18 (2%)	47 49
1	B	712/757 (94%)	696 (98%)	16 (2%)	52 55

Continued on next page...

Continued from previous page...

Mol	Chain	Analysed	Rotameric	Outliers	Percentiles
All	All	1424/1514 (94%)	1390 (98%)	34 (2%)	49 51

All (34) residues with a non-rotameric sidechain are listed below:

Mol	Chain	Res	Type
1	A	16	ASP
1	A	29	LEU
1	A	55	LEU
1	A	123	LEU
1	A	183	ARG
1	A	197	GLU
1	A	235	SER
1	A	314	TYR
1	A	511	ARG
1	A	542	ILE
1	A	546	THR
1	A	658	ASN
1	A	681	LYS
1	A	704	LYS
1	A	713	ASP
1	A	758	GLU
1	A	883	GLU
1	A	909	ARG
1	B	16	ASP
1	B	29	LEU
1	B	55	LEU
1	B	123	LEU
1	B	197	GLU
1	B	235	SER
1	B	314	TYR
1	B	511	ARG
1	B	542	ILE
1	B	546	THR
1	B	658	ASN
1	B	681	LYS
1	B	713	ASP
1	B	758	GLU
1	B	786	ARG
1	B	902	ARG

Sometimes sidechains can be flipped to improve hydrogen bonding and reduce clashes. All (4) such sidechains are listed below:

Mol	Chain	Res	Type
1	A	165	ASN
1	A	461	ASN
1	B	106	HIS
1	B	461	ASN

5.3.3 RNA [i](#)

There are no RNA molecules in this entry.

5.4 Non-standard residues in protein, DNA, RNA chains [i](#)

There are no non-standard protein/DNA/RNA residues in this entry.

5.5 Carbohydrates [i](#)

There are no monosaccharides in this entry.

5.6 Ligand geometry [i](#)

25 ligands are modelled in this entry.

In the following table, the Counts columns list the number of bonds (or angles) for which Mogul statistics could be retrieved, the number of bonds (or angles) that are observed in the model and the number of bonds (or angles) that are defined in the Chemical Component Dictionary. The Link column lists molecule types, if any, to which the group is linked. The Z score for a bond length (or angle) is the number of standard deviations the observed value is removed from the expected value. A bond length (or angle) with $|Z| > 2$ is considered an outlier worth inspection. RMSZ is the root-mean-square of all Z scores of the bond lengths (or angles).

Mol	Type	Chain	Res	Link	Bond lengths			Bond angles		
					Counts	RMSZ	$\# Z > 2$	Counts	RMSZ	$\# Z > 2$
4	SO4	A	2007	-	4,4,4	0.11	0	6,6,6	0.17	0
4	SO4	B	1007	-	4,4,4	0.14	0	6,6,6	0.12	0
3	PRO	A	2003	-	8,8,8	1.14	0	10,10,10	0.86	0
3	PRO	B	1002	-	8,8,8	1.09	0	10,10,10	0.91	0
4	SO4	A	2013	-	4,4,4	0.13	0	6,6,6	0.26	0
4	SO4	B	1010	-	4,4,4	0.18	0	6,6,6	0.09	0
4	SO4	A	2011	-	4,4,4	0.16	0	6,6,6	0.12	0
4	SO4	A	2012	-	4,4,4	0.11	0	6,6,6	0.12	0
4	SO4	B	1008	-	4,4,4	0.15	0	6,6,6	0.13	0
4	SO4	B	1006	-	4,4,4	0.16	0	6,6,6	0.10	0
4	SO4	A	2008	-	4,4,4	0.19	0	6,6,6	0.18	0

Mol	Type	Chain	Res	Link	Bond lengths			Bond angles		
					Counts	RMSZ	# Z > 2	Counts	RMSZ	# Z > 2
3	PRO	A	2002	-	8,8,8	1.08	0	10,10,10	1.15	1 (10%)
3	PRO	A	2006	-	8,8,8	1.05	0	10,10,10	1.25	1 (10%)
4	SO4	B	1011	-	4,4,4	0.17	0	6,6,6	0.19	0
3	PRO	B	1005	-	8,8,8	1.10	0	10,10,10	0.96	0
4	SO4	A	2010	-	4,4,4	0.14	0	6,6,6	0.11	0
3	PRO	A	2004	-	8,8,8	1.06	0	10,10,10	1.21	1 (10%)
2	FDA	B	1001	-	52,58,58	2.65	23 (44%)	60,89,89	1.61	7 (11%)
3	PRO	B	1003	-	8,8,8	1.15	0	10,10,10	0.97	0
3	PRO	B	1004	-	8,8,8	1.14	0	10,10,10	1.27	2 (20%)
4	SO4	A	2009	-	4,4,4	0.11	0	6,6,6	0.17	0
4	SO4	B	1012	-	4,4,4	0.13	0	6,6,6	0.13	0
4	SO4	B	1009	-	4,4,4	0.11	0	6,6,6	0.12	0
2	FDA	A	2001	-	52,58,58	2.66	22 (42%)	60,89,89	1.58	10 (16%)
3	PRO	A	2005	-	8,8,8	1.11	0	10,10,10	1.18	1 (10%)

In the following table, the Chirals column lists the number of chiral outliers, the number of chiral centers analysed, the number of these observed in the model and the number defined in the Chemical Component Dictionary. Similar counts are reported in the Torsion and Rings columns. '-' means no outliers of that kind were identified.

Mol	Type	Chain	Res	Link	Chirals	Torsions	Rings
3	PRO	B	1003	-	-	4/4/11/11	0/1/1/1
3	PRO	B	1004	-	-	0/4/11/11	0/1/1/1
3	PRO	A	2003	-	-	4/4/11/11	0/1/1/1
3	PRO	A	2002	-	-	1/4/11/11	0/1/1/1
3	PRO	B	1002	-	-	0/4/11/11	0/1/1/1
3	PRO	A	2006	-	-	0/4/11/11	0/1/1/1
3	PRO	B	1005	-	-	2/4/11/11	0/1/1/1
2	FDA	A	2001	-	-	5/30/50/50	0/6/6/6
3	PRO	A	2005	-	-	3/4/11/11	0/1/1/1
3	PRO	A	2004	-	-	2/4/11/11	0/1/1/1
2	FDA	B	1001	-	-	7/30/50/50	0/6/6/6

All (45) bond length outliers are listed below:

Mol	Chain	Res	Type	Atoms	Z	Observed(Å)	Ideal(Å)
2	A	2001	FDA	O4-C4	7.30	1.37	1.23
2	B	1001	FDA	O4-C4	7.04	1.37	1.23
2	A	2001	FDA	C6-C5X	6.93	1.50	1.39

Continued on next page...

Continued from previous page...

Mol	Chain	Res	Type	Atoms	Z	Observed(Å)	Ideal(Å)
2	A	2001	FDA	O2-C2	6.84	1.37	1.23
2	B	1001	FDA	C6-C5X	6.66	1.49	1.39
2	B	1001	FDA	O2-C2	6.53	1.37	1.23
2	B	1001	FDA	C9-C9A	5.54	1.48	1.39
2	A	2001	FDA	C9-C9A	5.46	1.48	1.39
2	B	1001	FDA	C4X-N5	4.30	1.45	1.35
2	A	2001	FDA	C10-N1	4.20	1.44	1.37
2	B	1001	FDA	C2-N1	4.12	1.44	1.37
2	B	1001	FDA	C10-N1	3.99	1.44	1.37
2	A	2001	FDA	C4X-N5	3.81	1.44	1.35
2	A	2001	FDA	C5X-N5	3.55	1.46	1.39
2	A	2001	FDA	C2-N1	3.39	1.43	1.37
2	B	1001	FDA	C5X-N5	3.37	1.45	1.39
2	A	2001	FDA	C5X-C9A	-3.30	1.36	1.40
2	B	1001	FDA	C10-N10	3.21	1.44	1.38
2	B	1001	FDA	C5X-C9A	-3.20	1.37	1.40
2	A	2001	FDA	C10-N10	2.97	1.43	1.38
2	B	1001	FDA	C4X-C4	2.95	1.49	1.42
2	B	1001	FDA	C9A-N10	2.95	1.46	1.41
2	B	1001	FDA	C2B-C1B	-2.90	1.49	1.53
2	A	2001	FDA	C2-N3	2.89	1.42	1.37
2	A	2001	FDA	C4X-C4	2.77	1.49	1.42
2	A	2001	FDA	C6A-N6A	2.77	1.44	1.34
2	B	1001	FDA	O2'-C2'	-2.75	1.37	1.43
2	B	1001	FDA	C6A-N6A	2.71	1.43	1.34
2	A	2001	FDA	C2A-N3A	2.71	1.36	1.32
2	A	2001	FDA	PA-O2A	-2.64	1.42	1.55
2	B	1001	FDA	C2-N3	2.63	1.42	1.37
2	A	2001	FDA	PA-O5B	-2.63	1.48	1.59
2	A	2001	FDA	C2B-C1B	-2.61	1.49	1.53
2	B	1001	FDA	O3B-C3B	-2.53	1.37	1.43
2	A	2001	FDA	O3B-C3B	-2.51	1.37	1.43
2	A	2001	FDA	O3'-C3'	-2.49	1.37	1.43
2	A	2001	FDA	C9A-N10	2.42	1.45	1.41
2	B	1001	FDA	PA-O2A	-2.41	1.44	1.55
2	B	1001	FDA	PA-O5B	-2.39	1.49	1.59
2	B	1001	FDA	C2A-N3A	2.23	1.35	1.32
2	B	1001	FDA	C2B-C3B	-2.19	1.47	1.53
2	B	1001	FDA	O4'-C4'	-2.15	1.38	1.43
2	A	2001	FDA	O2'-C2'	-2.15	1.38	1.43
2	B	1001	FDA	O2B-C2B	-2.06	1.38	1.43
2	A	2001	FDA	C6-C7	2.04	1.42	1.39

All (23) bond angle outliers are listed below:

Mol	Chain	Res	Type	Atoms	Z	Observed(°)	Ideal(°)
2	B	1001	FDA	N3A-C2A-N1A	-5.98	119.33	128.68
2	A	2001	FDA	N3A-C2A-N1A	-5.93	119.41	128.68
2	B	1001	FDA	C4-N3-C2	-5.33	118.66	126.34
2	A	2001	FDA	C4-N3-C2	-4.67	119.61	126.34
2	A	2001	FDA	O4-C4-C4X	-3.50	119.21	127.24
2	B	1001	FDA	O4-C4-C4X	-3.18	119.95	127.24
2	B	1001	FDA	N3-C2-N1	3.13	120.83	115.80
2	B	1001	FDA	O2A-PA-O5B	-3.12	93.25	107.75
2	A	2001	FDA	N3-C2-N1	2.92	120.50	115.80
2	A	2001	FDA	O2A-PA-O5B	-2.82	94.67	107.75
2	B	1001	FDA	C4X-C4-N3	2.75	120.51	112.31
2	A	2001	FDA	O5'-P-O1P	2.55	119.02	109.07
2	A	2001	FDA	C4X-C4-N3	2.48	119.71	112.31
3	A	2006	PRO	OXT-C-CA	2.45	121.53	113.40
2	B	1001	FDA	C1B-N9A-C4A	-2.41	122.40	126.64
2	A	2001	FDA	O2-C2-N1	-2.40	117.29	121.82
3	B	1004	PRO	OXT-C-O	-2.34	118.77	124.09
3	A	2004	PRO	OXT-C-CA	2.27	120.93	113.40
3	B	1004	PRO	OXT-C-CA	2.23	120.81	113.40
3	A	2005	PRO	OXT-C-O	-2.12	119.27	124.09
2	A	2001	FDA	O5B-PA-O1A	2.05	117.06	109.07
2	A	2001	FDA	C1B-N9A-C4A	-2.03	123.07	126.64
3	A	2002	PRO	OXT-C-CA	2.01	120.09	113.40

There are no chirality outliers.

All (28) torsion outliers are listed below:

Mol	Chain	Res	Type	Atoms
2	A	2001	FDA	P-O3P-PA-O5B
3	A	2003	PRO	O-C-CA-N
3	A	2003	PRO	OXT-C-CA-N
3	A	2003	PRO	O-C-CA-CB
3	A	2003	PRO	OXT-C-CA-CB
3	B	1003	PRO	O-C-CA-N
3	B	1003	PRO	OXT-C-CA-N
3	B	1003	PRO	O-C-CA-CB
3	B	1003	PRO	OXT-C-CA-CB
2	A	2001	FDA	O3'-C3'-C4'-O4'
2	A	2001	FDA	O3'-C3'-C4'-C5'
2	A	2001	FDA	C2'-C3'-C4'-O4'
2	A	2001	FDA	C2'-C3'-C4'-C5'

Continued on next page...

Continued from previous page...

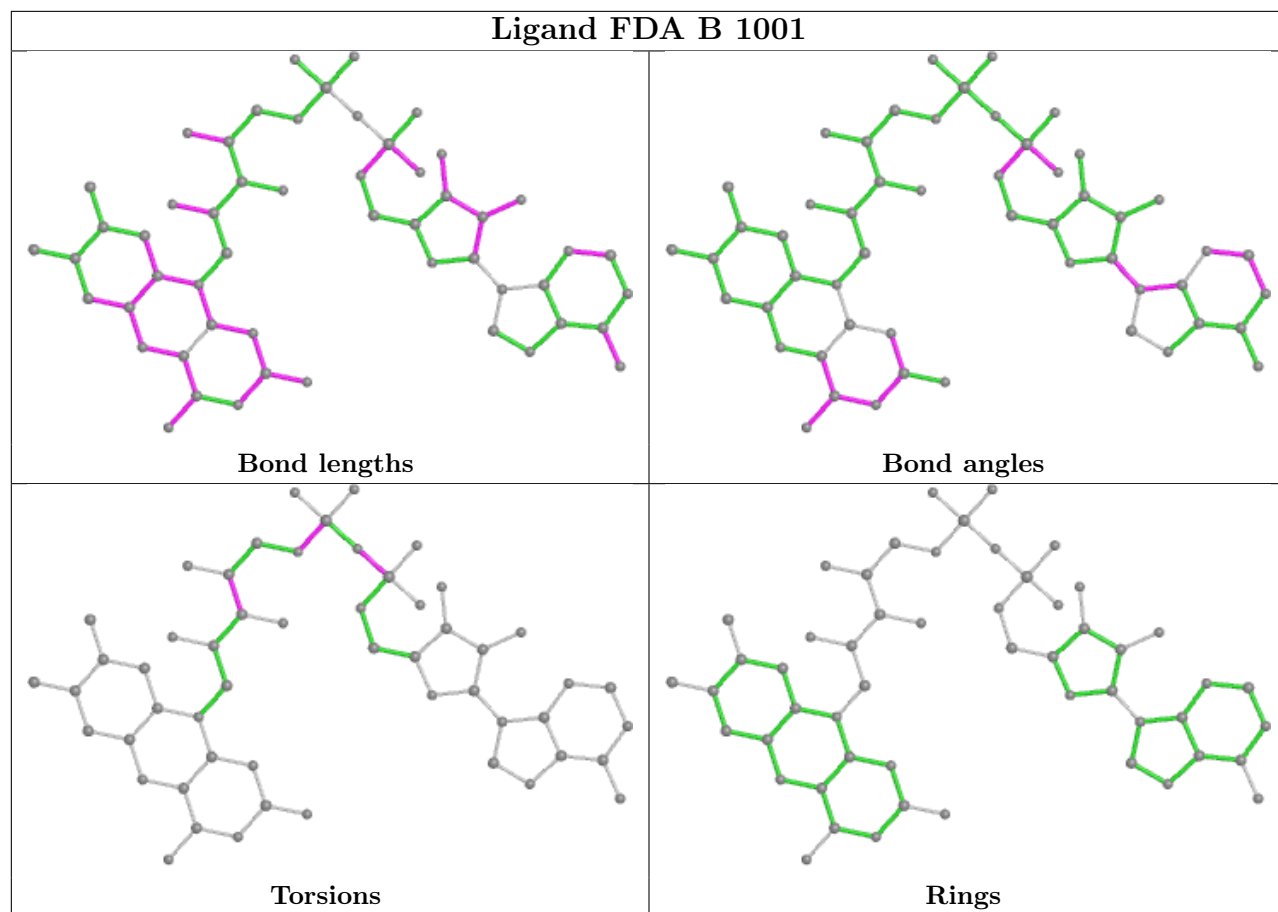
Mol	Chain	Res	Type	Atoms
2	B	1001	FDA	C2'-C3'-C4'-C5'
2	B	1001	FDA	C2'-C3'-C4'-O4'
2	B	1001	FDA	O3'-C3'-C4'-C5'
2	B	1001	FDA	C5'-O5'-P-O1P
3	A	2002	PRO	O-C-CA-CB
3	A	2004	PRO	O-C-CA-CB
3	A	2004	PRO	OXT-C-CA-CB
3	A	2005	PRO	O-C-CA-CB
3	B	1005	PRO	O-C-CA-CB
2	B	1001	FDA	O3'-C3'-C4'-O4'
3	A	2005	PRO	O-C-CA-N
3	B	1005	PRO	OXT-C-CA-CB
2	B	1001	FDA	P-O3P-PA-O5B
3	A	2005	PRO	OXT-C-CA-N
2	B	1001	FDA	C5'-O5'-P-O2P

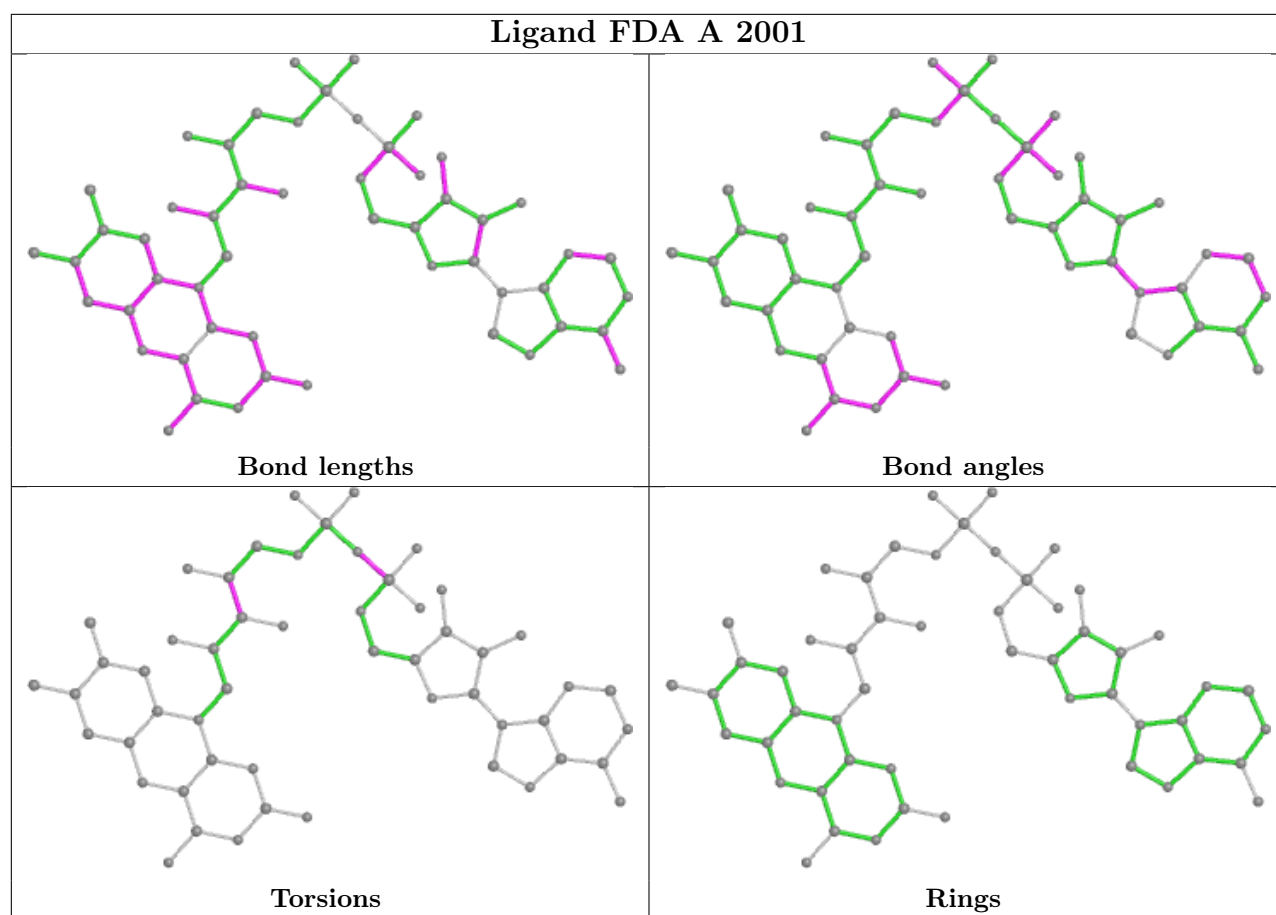
There are no ring outliers.

6 monomers are involved in 8 short contacts:

Mol	Chain	Res	Type	Clashes	Symm-Clashes
3	A	2003	PRO	1	0
4	B	1008	SO4	1	0
3	A	2002	PRO	1	0
3	B	1003	PRO	2	0
4	A	2009	SO4	2	0
2	A	2001	FDA	1	0

The following is a two-dimensional graphical depiction of Mogul quality analysis of bond lengths, bond angles, torsion angles, and ring geometry for all instances of the Ligand of Interest. In addition, ligands with molecular weight > 250 and outliers as shown on the validation Tables will also be included. For torsion angles, if less than 5% of the Mogul distribution of torsion angles is within 10 degrees of the torsion angle in question, then that torsion angle is considered an outlier. Any bond that is central to one or more torsion angles identified as an outlier by Mogul will be highlighted in the graph. For rings, the root-mean-square deviation (RMSD) between the ring in question and similar rings identified by Mogul is calculated over all ring torsion angles. If the average RMSD is greater than 60 degrees and the minimal RMSD between the ring in question and any Mogul-identified rings is also greater than 60 degrees, then that ring is considered an outlier. The outliers are highlighted in purple. The color gray indicates Mogul did not find sufficient equivalents in the CSD to analyse the geometry.





5.7 Other polymers [i](#)

There are no such residues in this entry.

5.8 Polymer linkage issues [i](#)

There are no chain breaks in this entry.

6 Fit of model and data

6.1 Protein, DNA and RNA chains

In the following table, the column labelled ‘#RSRZ > 2’ contains the number (and percentage) of RSRZ outliers, followed by percent RSRZ outliers for the chain as percentile scores relative to all X-ray entries and entries of similar resolution. The OWAB column contains the minimum, median, 95th percentile and maximum values of the occupancy-weighted average B-factor per residue. The column labelled ‘Q < 0.9’ lists the number of (and percentage) of residues with an average occupancy less than 0.9.

Mol	Chain	Analysed	<RSRZ>	#RSRZ>2	OWAB(Å ²)	Q<0.9
1	A	973/1001 (97%)	0.02	32 (3%) 46 55	22, 34, 61, 98	0
1	B	973/1001 (97%)	0.04	36 (3%) 41 49	25, 39, 66, 100	0
All	All	1946/2002 (97%)	0.03	68 (3%) 44 52	22, 36, 64, 100	0

All (68) RSRZ outliers are listed below:

Mol	Chain	Res	Type	RSRZ
1	B	409	GLY	8.8
1	B	129	VAL	6.4
1	B	185	GLY	5.7
1	A	409	GLY	5.2
1	A	185	GLY	4.9
1	A	542	ILE	4.8
1	A	183	ARG	4.8
1	A	184	SER	4.7
1	B	434	ALA	4.3
1	A	132	PRO	4.1
1	A	133	GLY	4.1
1	B	28	HIS	3.9
1	B	186	GLN	3.9
1	B	490	VAL	3.7
1	B	183	ARG	3.6
1	B	542	ILE	3.6
1	B	182	PRO	3.6
1	A	130	ILE	3.5
1	A	182	PRO	3.4
1	A	548	ASP	3.4
1	B	223	ALA	3.3
1	B	184	SER	3.3
1	B	128	ARG	3.2
1	B	123	LEU	3.2

Continued on next page...

Continued from previous page...

Mol	Chain	Res	Type	RSRZ
1	B	132	PRO	3.1
1	A	988	ALA	3.1
1	B	548	ASP	3.0
1	A	30	SER	3.0
1	B	130	ILE	3.0
1	B	987	ALA	3.0
1	B	87	ASP	2.9
1	B	755	LEU	2.9
1	A	224	GLY	2.9
1	A	55	LEU	2.9
1	B	226	HIS	2.9
1	A	987	ALA	2.9
1	B	122	ALA	2.9
1	A	755	LEU	2.8
1	A	546	THR	2.8
1	A	434	ALA	2.6
1	B	222	ALA	2.6
1	A	186	GLN	2.6
1	B	224	GLY	2.6
1	A	223	ALA	2.6
1	B	133	GLY	2.5
1	B	756	ILE	2.5
1	A	28	HIS	2.5
1	A	490	VAL	2.4
1	B	29	LEU	2.4
1	B	898	GLU	2.4
1	A	29	LEU	2.3
1	B	30	SER	2.3
1	B	188	THR	2.3
1	B	86	PRO	2.3
1	A	123	LEU	2.3
1	B	25	PRO	2.2
1	B	499	ARG	2.2
1	A	459	LEU	2.2
1	A	225	ASN	2.2
1	A	479	PRO	2.2
1	A	86	PRO	2.1
1	B	509	PRO	2.1
1	A	549	GLN	2.1
1	A	463	ALA	2.1
1	B	22	ARG	2.0
1	A	25	PRO	2.0

Continued on next page...

Continued from previous page...

Mol	Chain	Res	Type	RSRZ
1	A	756	ILE	2.0
1	B	753	VAL	2.0

6.2 Non-standard residues in protein, DNA, RNA chains [i](#)

There are no non-standard protein/DNA/RNA residues in this entry.

6.3 Carbohydrates [i](#)

There are no monosaccharides in this entry.

6.4 Ligands [i](#)

In the following table, the Atoms column lists the number of modelled atoms in the group and the number defined in the chemical component dictionary. The B-factors column lists the minimum, median, 95th percentile and maximum values of B factors of atoms in the group. The column labelled 'Q<0.9' lists the number of atoms with occupancy less than 0.9.

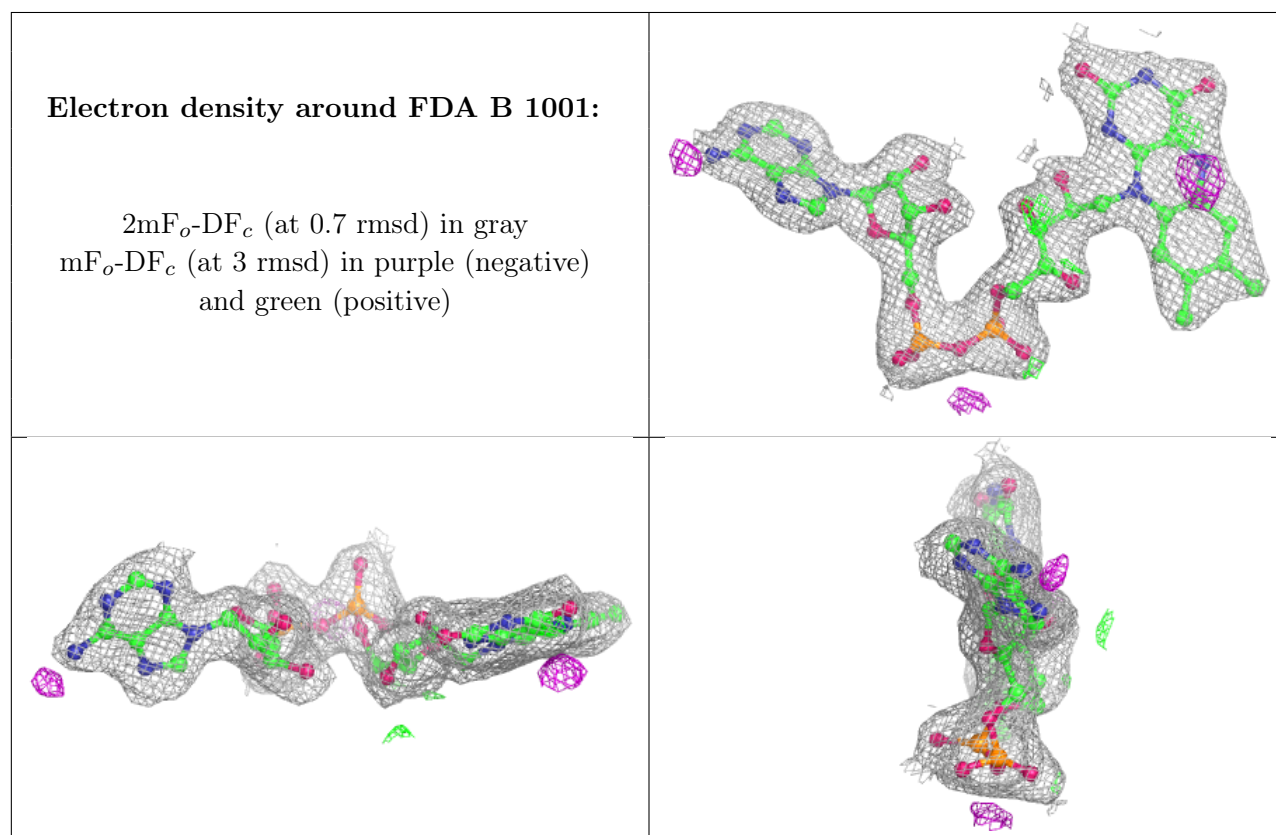
Mol	Type	Chain	Res	Atoms	RSCC	RSR	B-factors(Å ²)	Q<0.9
3	PRO	B	1004	8/8	0.79	0.26	57,62,64,65	0
4	SO4	B	1007	5/5	0.83	0.16	76,82,83,84	5
4	SO4	B	1009	5/5	0.83	0.19	99,101,103,104	0
4	SO4	A	2013	5/5	0.87	0.28	73,79,81,81	5
4	SO4	B	1008	5/5	0.88	0.21	80,80,83,86	5
3	PRO	A	2005	8/8	0.88	0.26	53,54,55,57	8
4	SO4	B	1012	5/5	0.88	0.41	91,95,95,96	5
4	SO4	B	1010	5/5	0.89	0.34	92,93,95,95	5
3	PRO	A	2006	8/8	0.89	0.15	38,43,47,47	8
4	SO4	A	2010	5/5	0.90	0.26	82,82,83,86	5
4	SO4	A	2012	5/5	0.91	0.23	96,97,98,99	0
3	PRO	B	1003	8/8	0.92	0.30	40,46,60,62	0
4	SO4	A	2011	5/5	0.92	0.20	83,84,86,88	5
3	PRO	A	2004	8/8	0.92	0.11	40,48,52,53	0
3	PRO	B	1005	8/8	0.93	0.12	51,56,57,57	0
4	SO4	A	2008	5/5	0.93	0.10	56,59,64,66	5
4	SO4	A	2009	5/5	0.93	0.23	56,58,63,66	5
4	SO4	B	1011	5/5	0.94	0.13	75,76,81,84	5
3	PRO	A	2003	8/8	0.94	0.28	32,37,65,67	8
2	FDA	B	1001	53/53	0.95	0.11	26,34,44,53	0
4	SO4	A	2007	5/5	0.96	0.15	49,52,52,52	5

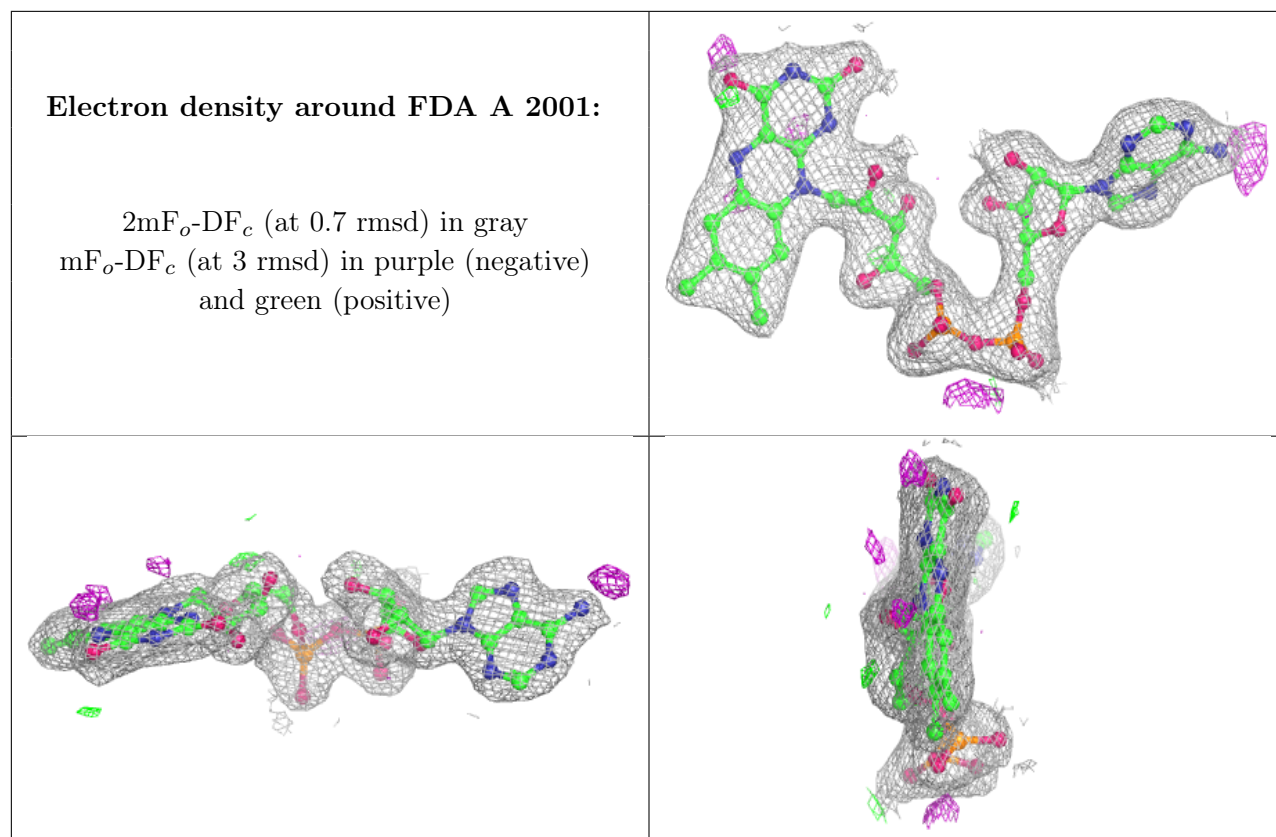
Continued on next page...

Continued from previous page...

Mol	Type	Chain	Res	Atoms	RSCC	RSR	B-factors(\AA^2)	Q<0.9
2	FDA	A	2001	53/53	0.97	0.11	19,29,38,42	0
3	PRO	A	2002	8/8	0.97	0.22	28,35,38,40	0
4	SO4	B	1006	5/5	0.97	0.11	50,53,56,57	5
3	PRO	B	1002	8/8	0.98	0.20	31,35,38,39	0

The following is a graphical depiction of the model fit to experimental electron density of all instances of the Ligand of Interest. In addition, ligands with molecular weight > 250 and outliers as shown on the geometry validation Tables will also be included. Each fit is shown from different orientation to approximate a three-dimensional view.





6.5 Other polymers [i](#)

There are no such residues in this entry.