



wwPDB X-ray Structure Validation Summary Report ⓘ

Dec 8, 2023 – 07:54 am GMT

PDB ID : 8BUV
Title : HIV-1 Integrase Catalytic Core Domain and C-Terminal Domain in Complex with Allosteric Integrase Inhibitor LEDGIN 3
Authors : Singer, M.R.; Pye, V.E.; Cook, N.J.; Cherepanov, P.
Deposited on : 2022-11-30
Resolution : 2.04 Å (reported)

This is a wwPDB X-ray Structure Validation Summary Report for a publicly released PDB entry.

We welcome your comments at validation@mail.wwpdb.org

A user guide is available at

<https://www.wwpdb.org/validation/2017/XrayValidationReportHelp>

with specific help available everywhere you see the ⓘ symbol.

The types of validation reports are described at

<http://www.wwpdb.org/validation/2017/FAQs#types>.

The following versions of software and data (see [references ⓘ](#)) were used in the production of this report:

MolProbity : 4.02b-467
Mogul : 1.8.4, CSD as541be (2020)
Xtriage (Phenix) : 1.13
EDS : 2.36
buster-report : 1.1.7 (2018)
Percentile statistics : 20191225.v01 (using entries in the PDB archive December 25th 2019)
Refmac : 5.8.0158
CCP4 : 7.0.044 (Gargrove)
Ideal geometry (proteins) : Engh & Huber (2001)
Ideal geometry (DNA, RNA) : Parkinson et al. (1996)
Validation Pipeline (wwPDB-VP) : 2.36

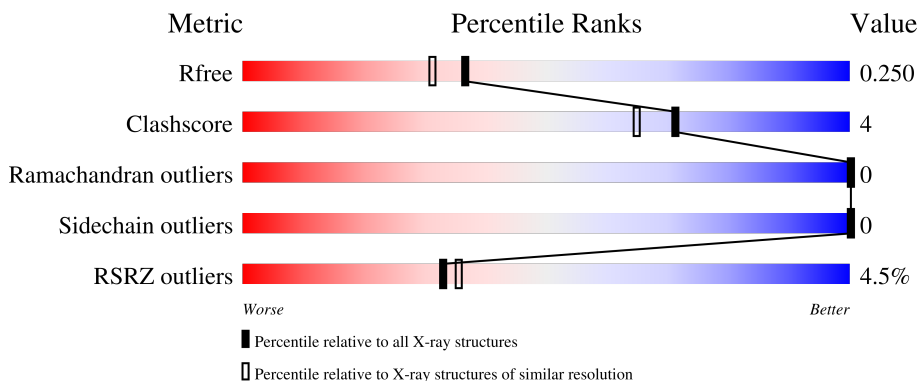
1 Overall quality at a glance

The following experimental techniques were used to determine the structure:

X-RAY DIFFRACTION

The reported resolution of this entry is 2.04 Å.

Percentile scores (ranging between 0-100) for global validation metrics of the entry are shown in the following graphic. The table shows the number of entries on which the scores are based.



Metric	Whole archive (#Entries)	Similar resolution (#Entries, resolution range(Å))
R_{free}	130704	1692 (2.04-2.04)
Clashscore	141614	1773 (2.04-2.04)
Ramachandran outliers	138981	1752 (2.04-2.04)
Sidechain outliers	138945	1752 (2.04-2.04)
RSRZ outliers	127900	1672 (2.04-2.04)

The table below summarises the geometric issues observed across the polymeric chains and their fit to the electron density. The red, orange, yellow and green segments of the lower bar indicate the fraction of residues that contain outliers for ≥ 3 , 2, 1 and 0 types of geometric quality criteria respectively. A grey segment represents the fraction of residues that are not modelled. The numeric value for each fraction is indicated below the corresponding segment, with a dot representing fractions $\leq 5\%$. The upper red bar (where present) indicates the fraction of residues that have poor fit to the electron density. The numeric value is given above the bar.

Mol	Chain	Length	Quality of chain
1	A	233	 2% 21% 76%
1	B	233	 % 56% 6% 38%
1	C	233	 3% 20% 76%
1	D	233	 2% 58% 39%

2 Entry composition

There are 5 unique types of molecules in this entry. The entry contains 3406 atoms, of which 0 are hydrogens and 0 are deuteriums.

In the tables below, the ZeroOcc column contains the number of atoms modelled with zero occupancy, the AltConf column contains the number of residues with at least one atom in alternate conformation and the Trace column contains the number of residues modelled with at most 2 atoms.

- Molecule 1 is a protein called Integrase.

Mol	Chain	Residues	Atoms					ZeroOcc	AltConf	Trace
			Total	C	N	O	S			
1	A	56	458	290	87	80	1	0	0	0
1	B	144	1137	726	199	208	4	0	2	0
1	C	55	449	285	85	78	1	0	0	0
1	D	143	1128	719	198	206	5	0	2	0

There are 12 discrepancies between the modelled and reference sequences:

Chain	Residue	Modelled	Actual	Comment	Reference
A	219	SER	-	expression tag	UNP P12497
A	243	GLU	TRP	engineered mutation	UNP P12497
A	424	LYS	PHE	engineered mutation	UNP P12497
B	-20	SER	-	expression tag	UNP P12497
B	4	GLU	TRP	engineered mutation	UNP P12497
B	185	LYS	PHE	engineered mutation	UNP P12497
C	219	SER	-	expression tag	UNP P12497
C	243	GLU	TRP	engineered mutation	UNP P12497
C	424	LYS	PHE	engineered mutation	UNP P12497
D	-20	SER	-	expression tag	UNP P12497
D	4	GLU	TRP	engineered mutation	UNP P12497
D	185	LYS	PHE	engineered mutation	UNP P12497

- Molecule 2 is MAGNESIUM ION (three-letter code: MG) (formula: Mg).

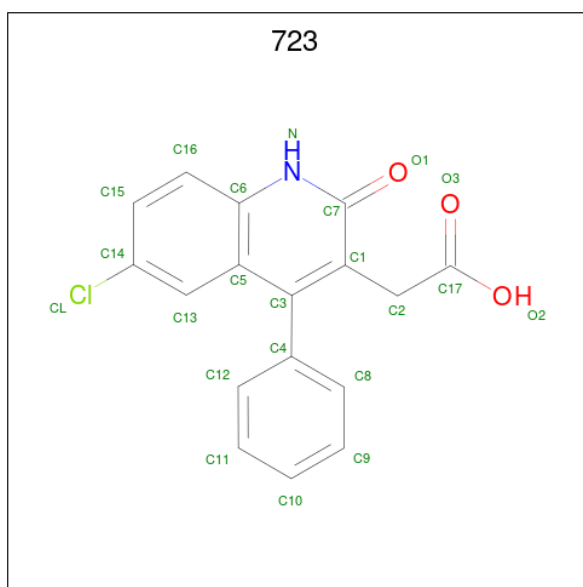
Mol	Chain	Residues	Atoms		ZeroOcc	AltConf
2	B	1	Total	Mg	0	0
			1	1		
2	D	1	Total	Mg	0	0
			1	1		

- Molecule 3 is 1,2-ETHANEDIOL (three-letter code: EDO) (formula: $C_2H_6O_2$).



Mol	Chain	Residues	Atoms	ZeroOcc	AltConf
3	B	1	Total C O 4 2 2	0	0
3	B	1	Total C O 4 2 2	0	0
3	B	1	Total C O 4 2 2	0	0
3	B	1	Total C O 4 2 2	0	0
3	C	1	Total C O 4 2 2	0	0
3	D	1	Total C O 4 2 2	0	0

- Molecule 4 is (6-chloro-2-oxo-4-phenyl-1,2-dihydroquinolin-3-yl)acetic acid (three-letter code: 723) (formula: $C_{17}H_{12}ClNO_3$) (labeled as "Ligand of Interest" by depositor).



Mol	Chain	Residues	Atoms				ZeroOcc	AltConf	
			Total	C	Cl	N			O
4	B	1	22	17	1	1	3	0	0
4	D	1	22	17	1	1	3	0	0

- Molecule 5 is water.

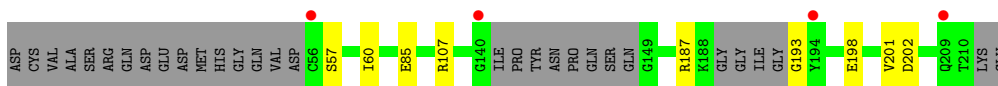
Mol	Chain	Residues	Atoms		ZeroOcc	AltConf
5	A	12	Total	O	0	0
			12	12		
5	B	69	Total	O	0	0
			69	69		
5	C	12	Total	O	0	0
			12	12		
5	D	71	Total	O	0	0
			71	71		

LYS
GLY
GLY
ILE
GLY
TYR
SER
ALA
GLY
ARG
ILE
VAL
ASP
ILE
ALA
THR
ASP
ILE
GLN
THR
LYS
GLU

● Molecule 1: Integrase



SER
ILE
GLN
ASN
PHE
ARG
VAL
TYR
TYR
ARG
ASP
SER
ARG
ASP
PRO
VAL
TRP
LYS
GLY
PRO
ALA
LYS
LEU
LEU
GLU
LYS
GLY
GLU
ALA
ASN
VAL
VAL
ILE
GLN
ASP
ASN
SER
ASP
ILE
LYS
VAL
VAL
PRO
ARG
ARG
LYS
ALA
LYS
ILE
ILE
ARG
ASP
TYR
LYS
GLN
MET
ALA
ASP



4 Data and refinement statistics

Property	Value	Source
Space group	P 1 21 1	Depositor
Cell constants a, b, c, α , β , γ	53.84Å 65.16Å 69.79Å 90.00° 99.90° 90.00°	Depositor
Resolution (Å)	47.29 – 2.04 47.29 – 2.04	Depositor EDS
% Data completeness (in resolution range)	99.1 (47.29-2.04) 99.2 (47.29-2.04)	Depositor EDS
R_{merge}	0.21	Depositor
R_{sym}	(Not available)	Depositor
$\langle I/\sigma(I) \rangle$ ¹	1.06 (at 2.05Å)	Xtrriage
Refinement program	PHENIX dev_4694	Depositor
R, R_{free}	0.215 , 0.247 0.216 , 0.250	Depositor DCC
R_{free} test set	1483 reflections (4.91%)	wwPDB-VP
Wilson B-factor (Å ²)	44.2	Xtrriage
Anisotropy	0.351	Xtrriage
Bulk solvent k_{sol} (e/Å ³), B_{sol} (Å ²)	0.31 , 42.2	EDS
L-test for twinning ²	$\langle L \rangle = 0.50$, $\langle L^2 \rangle = 0.33$	Xtrriage
Estimated twinning fraction	No twinning to report.	Xtrriage
F_o, F_c correlation	0.95	EDS
Total number of atoms	3406	wwPDB-VP
Average B, all atoms (Å ²)	57.0	wwPDB-VP

Xtrriage's analysis on translational NCS is as follows: *The largest off-origin peak in the Patterson function is 7.06% of the height of the origin peak. No significant pseudotranslation is detected.*

¹Intensities estimated from amplitudes.

²Theoretical values of $\langle |L| \rangle$, $\langle L^2 \rangle$ for acentric reflections are 0.5, 0.333 respectively for untwinned datasets, and 0.375, 0.2 for perfectly twinned datasets.

5 Model quality [i](#)

5.1 Standard geometry [i](#)

Bond lengths and bond angles in the following residue types are not validated in this section: EDO, MG, 723

The Z score for a bond length (or angle) is the number of standard deviations the observed value is removed from the expected value. A bond length (or angle) with $|Z| > 5$ is considered an outlier worth inspection. RMSZ is the root-mean-square of all Z scores of the bond lengths (or angles).

Mol	Chain	Bond lengths		Bond angles	
		RMSZ	# Z >5	RMSZ	# Z >5
1	A	0.25	0/466	0.53	0/624
1	B	0.23	0/1158	0.44	0/1564
1	C	0.25	0/457	0.56	0/612
1	D	0.23	0/1150	0.43	0/1554
All	All	0.24	0/3231	0.47	0/4354

There are no bond length outliers.

There are no bond angle outliers.

There are no chirality outliers.

There are no planarity outliers.

5.2 Too-close contacts [i](#)

In the following table, the Non-H and H(model) columns list the number of non-hydrogen atoms and hydrogen atoms in the chain respectively. The H(added) column lists the number of hydrogen atoms added and optimized by MolProbity. The Clashes column lists the number of clashes within the asymmetric unit, whereas Symm-Clashes lists symmetry-related clashes.

Mol	Chain	Non-H	H(model)	H(added)	Clashes	Symm-Clashes
1	A	458	0	474	5	0
1	B	1137	0	1148	10	0
1	C	449	0	466	5	0
1	D	1128	0	1130	7	0
2	B	1	0	0	0	0
2	D	1	0	0	0	0
3	B	16	0	24	2	0
3	C	4	0	6	0	0
3	D	4	0	6	0	0

Continued on next page...

Continued from previous page...

Mol	Chain	Non-H	H(model)	H(added)	Clashes	Symm-Clashes
4	B	22	0	11	1	0
4	D	22	0	11	0	0
5	A	12	0	0	0	0
5	B	69	0	0	0	0
5	C	12	0	0	0	0
5	D	71	0	0	1	0
All	All	3406	0	3276	23	0

The all-atom clashscore is defined as the number of clashes found per 1000 atoms (including hydrogen atoms). The all-atom clashscore for this structure is 4.

The worst 5 of 23 close contacts within the same asymmetric unit are listed below, sorted by their clash magnitude.

Atom-1	Atom-2	Interatomic distance (Å)	Clash overlap (Å)
1:C:249:VAL:HG11	1:C:267:ILE:HD11	1.76	0.67
1:B:77[B]:VAL:HG22	1:B:84:ILE:HG22	1.80	0.62
1:C:270:ASP:HB2	1:C:273:LYS:HB3	1.83	0.60
1:A:268:ILE:HD13	1:B:128:ALA:HB1	1.82	0.59
1:B:71:LYS:HE3	3:B:305:EDO:H12	1.84	0.59

There are no symmetry-related clashes.

5.3 Torsion angles [i](#)

5.3.1 Protein backbone [i](#)

In the following table, the Percentiles column shows the percent Ramachandran outliers of the chain as a percentile score with respect to all X-ray entries followed by that with respect to entries of similar resolution.

The Analysed column shows the number of residues for which the backbone conformation was analysed, and the total number of residues.

Mol	Chain	Analysed	Favoured	Allowed	Outliers	Percentiles	
1	A	54/233 (23%)	51 (94%)	3 (6%)	0	100	100
1	B	140/233 (60%)	138 (99%)	2 (1%)	0	100	100
1	C	53/233 (23%)	48 (91%)	5 (9%)	0	100	100
1	D	139/233 (60%)	137 (99%)	2 (1%)	0	100	100
All	All	386/932 (41%)	374 (97%)	12 (3%)	0	100	100

There are no Ramachandran outliers to report.

5.3.2 Protein sidechains [i](#)

In the following table, the Percentiles column shows the percent sidechain outliers of the chain as a percentile score with respect to all X-ray entries followed by that with respect to entries of similar resolution.

The Analysed column shows the number of residues for which the sidechain conformation was analysed, and the total number of residues.

Mol	Chain	Analysed	Rotameric	Outliers	Percentiles	
1	A	48/193 (25%)	48 (100%)	0	100	100
1	B	120/193 (62%)	120 (100%)	0	100	100
1	C	47/193 (24%)	47 (100%)	0	100	100
1	D	119/193 (62%)	119 (100%)	0	100	100
All	All	334/772 (43%)	334 (100%)	0	100	100

There are no protein residues with a non-rotameric sidechain to report.

Sometimes sidechains can be flipped to improve hydrogen bonding and reduce clashes. There are no such sidechains identified.

5.3.3 RNA [i](#)

There are no RNA molecules in this entry.

5.4 Non-standard residues in protein, DNA, RNA chains [i](#)

There are no non-standard protein/DNA/RNA residues in this entry.

5.5 Carbohydrates [i](#)

There are no monosaccharides in this entry.

5.6 Ligand geometry [i](#)

Of 10 ligands modelled in this entry, 2 are monoatomic - leaving 8 for Mogul analysis.

In the following table, the Counts columns list the number of bonds (or angles) for which Mogul statistics could be retrieved, the number of bonds (or angles) that are observed in the model and

the number of bonds (or angles) that are defined in the Chemical Component Dictionary. The Link column lists molecule types, if any, to which the group is linked. The Z score for a bond length (or angle) is the number of standard deviations the observed value is removed from the expected value. A bond length (or angle) with $|Z| > 2$ is considered an outlier worth inspection. RMSZ is the root-mean-square of all Z scores of the bond lengths (or angles).

Mol	Type	Chain	Res	Link	Bond lengths			Bond angles		
					Counts	RMSZ	# Z > 2	Counts	RMSZ	# Z > 2
4	723	D	303	-	24,24,24	1.82	7 (29%)	30,34,34	1.52	2 (6%)
3	EDO	D	302	-	3,3,3	0.26	0	2,2,2	0.31	0
4	723	B	306	-	24,24,24	1.81	9 (37%)	30,34,34	1.56	2 (6%)
3	EDO	B	303	-	3,3,3	0.28	0	2,2,2	0.25	0
3	EDO	B	302	-	3,3,3	0.28	0	2,2,2	0.23	0
3	EDO	C	501	-	3,3,3	0.27	0	2,2,2	0.27	0
3	EDO	B	304	-	3,3,3	0.27	0	2,2,2	0.28	0
3	EDO	B	305	-	3,3,3	0.27	0	2,2,2	0.29	0

In the following table, the Chirals column lists the number of chiral outliers, the number of chiral centers analysed, the number of these observed in the model and the number defined in the Chemical Component Dictionary. Similar counts are reported in the Torsion and Rings columns. '-' means no outliers of that kind were identified.

Mol	Type	Chain	Res	Link	Chirals	Torsions	Rings
4	723	D	303	-	-	0/8/8/8	0/3/3/3
3	EDO	D	302	-	-	1/1/1/1	-
4	723	B	306	-	-	2/8/8/8	0/3/3/3
3	EDO	B	303	-	-	0/1/1/1	-
3	EDO	B	302	-	-	0/1/1/1	-
3	EDO	C	501	-	-	1/1/1/1	-
3	EDO	B	304	-	-	0/1/1/1	-
3	EDO	B	305	-	-	0/1/1/1	-

The worst 5 of 16 bond length outliers are listed below:

Mol	Chain	Res	Type	Atoms	Z	Observed(Å)	Ideal(Å)
4	D	303	723	C3-C1	4.36	1.39	1.35
4	B	306	723	C3-C1	4.31	1.39	1.35
4	B	306	723	C7-C1	-3.22	1.39	1.44
4	D	303	723	C7-C1	-3.17	1.39	1.44
4	D	303	723	C6-N	-3.16	1.34	1.39

All (4) bond angle outliers are listed below:

Mol	Chain	Res	Type	Atoms	Z	Observed(°)	Ideal(°)
4	B	306	723	C1-C7-N	5.72	121.02	115.90
4	D	303	723	C1-C7-N	5.71	121.01	115.90
4	B	306	723	O1-C7-C1	-4.27	119.33	124.54
4	D	303	723	O1-C7-C1	-3.99	119.67	124.54

There are no chirality outliers.

All (4) torsion outliers are listed below:

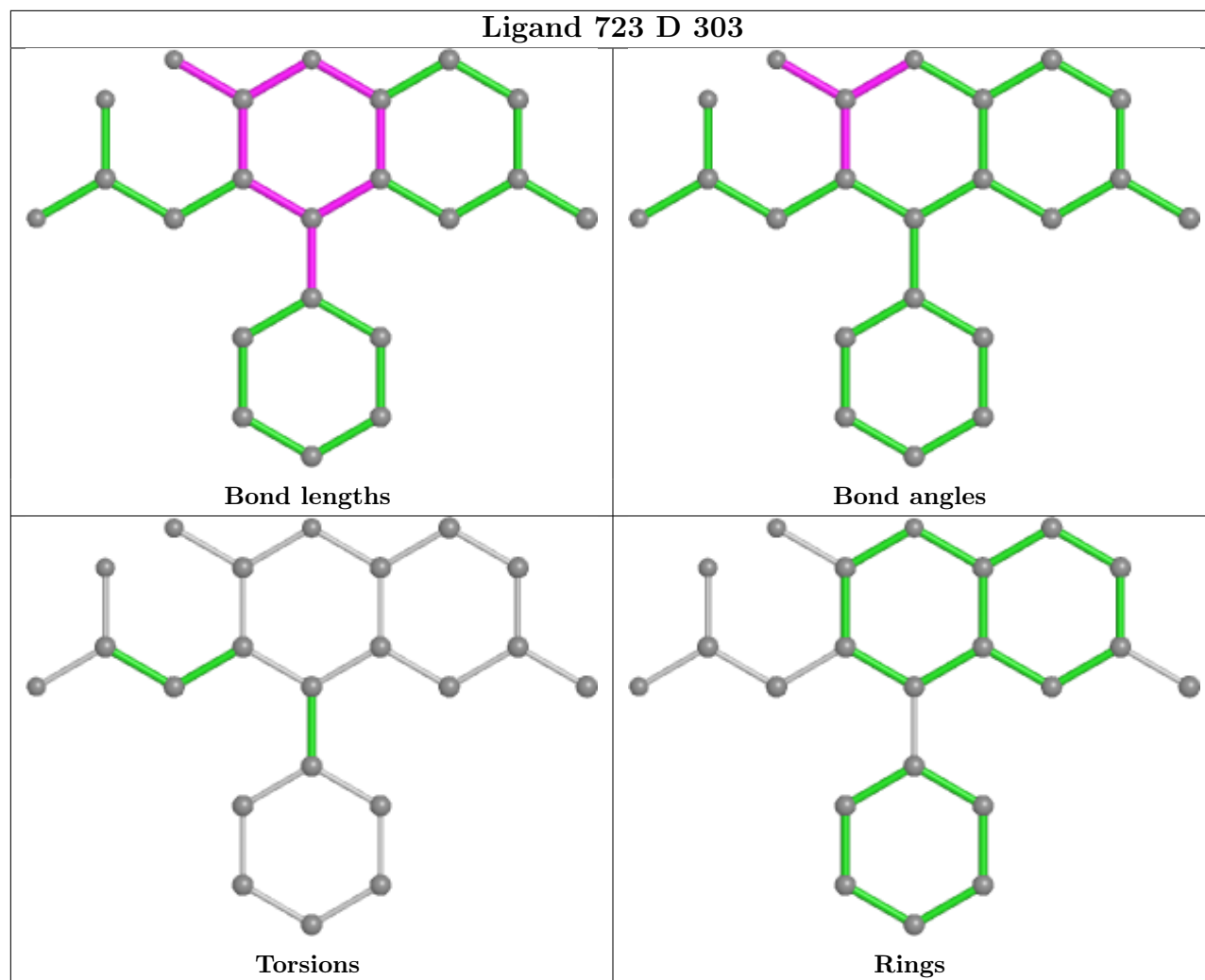
Mol	Chain	Res	Type	Atoms
3	D	302	EDO	O1-C1-C2-O2
4	B	306	723	O3-C17-C2-C1
4	B	306	723	O2-C17-C2-C1
3	C	501	EDO	O1-C1-C2-O2

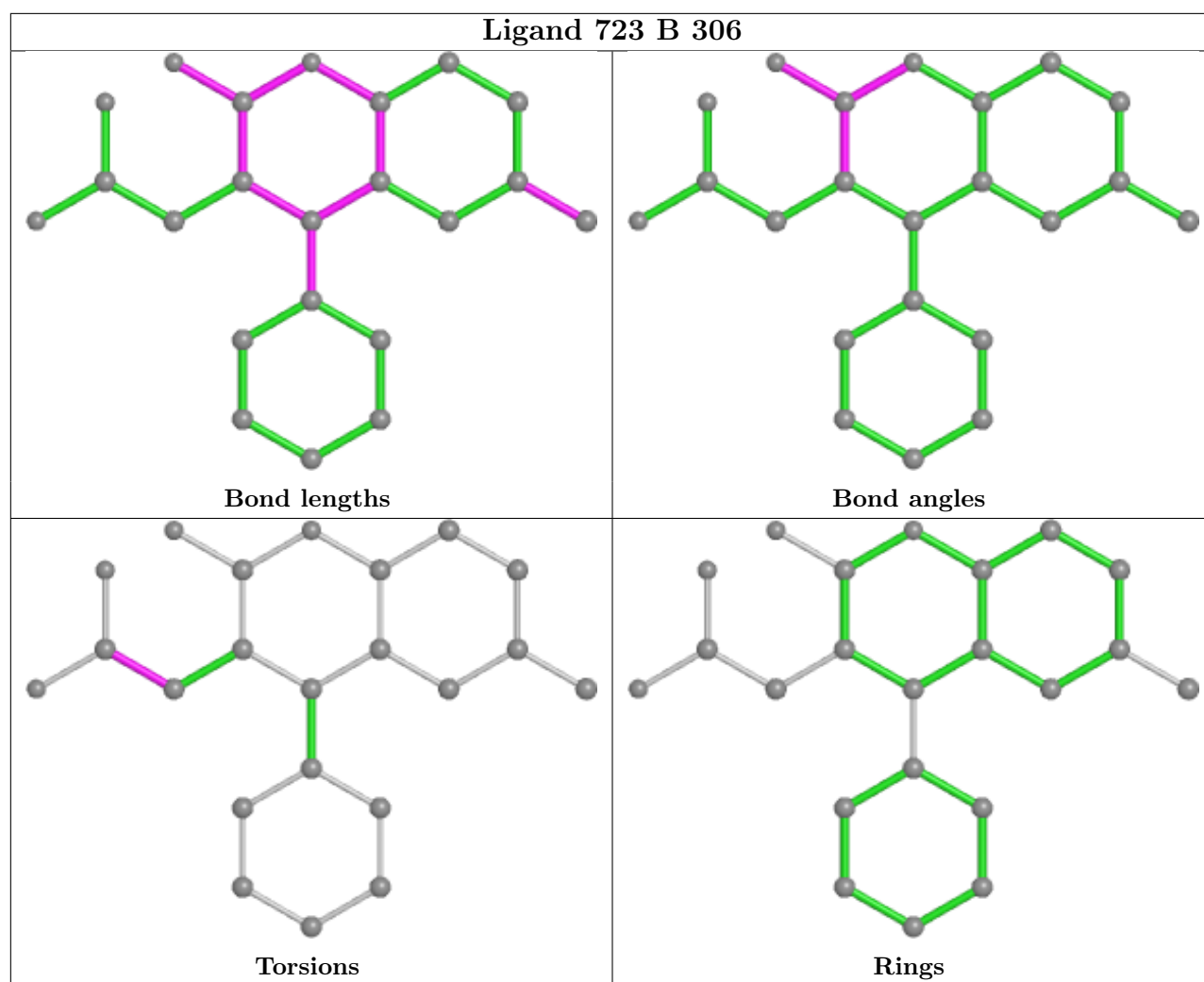
There are no ring outliers.

2 monomers are involved in 3 short contacts:

Mol	Chain	Res	Type	Clashes	Symm-Clashes
4	B	306	723	1	0
3	B	305	EDO	2	0

The following is a two-dimensional graphical depiction of Mogul quality analysis of bond lengths, bond angles, torsion angles, and ring geometry for all instances of the Ligand of Interest. In addition, ligands with molecular weight > 250 and outliers as shown on the validation Tables will also be included. For torsion angles, if less than 5% of the Mogul distribution of torsion angles is within 10 degrees of the torsion angle in question, then that torsion angle is considered an outlier. Any bond that is central to one or more torsion angles identified as an outlier by Mogul will be highlighted in the graph. For rings, the root-mean-square deviation (RMSD) between the ring in question and similar rings identified by Mogul is calculated over all ring torsion angles. If the average RMSD is greater than 60 degrees and the minimal RMSD between the ring in question and any Mogul-identified rings is also greater than 60 degrees, then that ring is considered an outlier. The outliers are highlighted in purple. The color gray indicates Mogul did not find sufficient equivalents in the CSD to analyse the geometry.





5.7 Other polymers [i](#)

There are no such residues in this entry.

5.8 Polymer linkage issues [i](#)

There are no chain breaks in this entry.

6 Fit of model and data [i](#)

6.1 Protein, DNA and RNA chains [i](#)

In the following table, the column labelled ‘#RSRZ > 2’ contains the number (and percentage) of RSRZ outliers, followed by percent RSRZ outliers for the chain as percentile scores relative to all X-ray entries and entries of similar resolution. The OWAB column contains the minimum, median, 95th percentile and maximum values of the occupancy-weighted average B-factor per residue. The column labelled ‘Q < 0.9’ lists the number of (and percentage) of residues with an average occupancy less than 0.9.

Mol	Chain	Analysed	<RSRZ>	#RSRZ>2	OWAB(Å ²)	Q<0.9
1	A	56/233 (24%)	0.54	5 (8%) 9 10	47, 63, 95, 117	0
1	B	144/233 (61%)	0.07	2 (1%) 75 78	36, 47, 85, 129	0
1	C	55/233 (23%)	0.74	7 (12%) 3 3	55, 74, 113, 129	0
1	D	143/233 (61%)	0.05	4 (2%) 53 58	35, 47, 80, 134	0
All	All	398/932 (42%)	0.22	18 (4%) 33 35	35, 52, 95, 134	0

The worst 5 of 18 RSRZ outliers are listed below:

Mol	Chain	Res	Type	RSRZ
1	C	272	GLY	3.7
1	C	240	LYS	3.7
1	D	194	TYR	3.4
1	C	255	SER	3.3
1	C	242	LEU	3.2

6.2 Non-standard residues in protein, DNA, RNA chains [i](#)

There are no non-standard protein/DNA/RNA residues in this entry.

6.3 Carbohydrates [i](#)

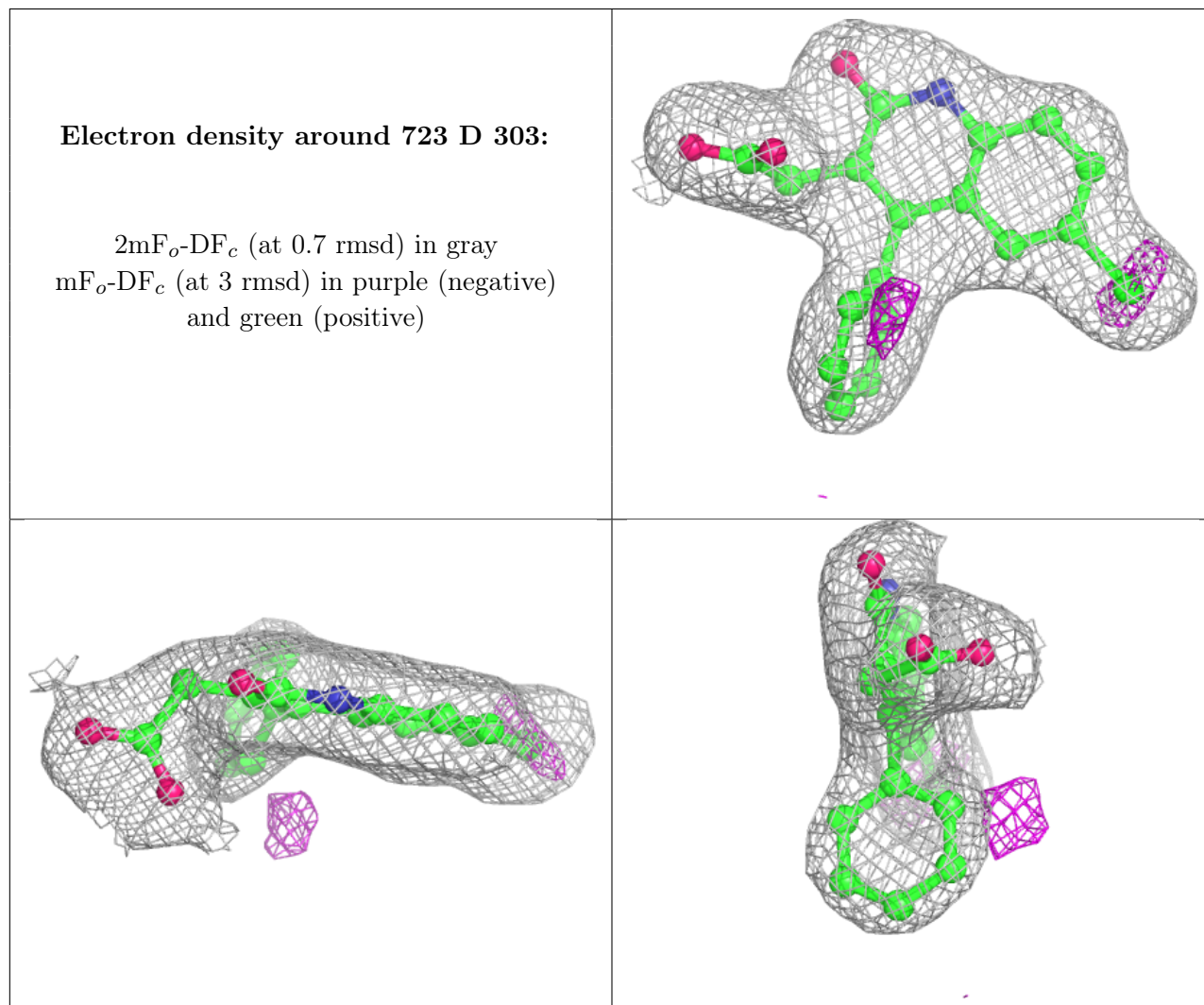
There are no monosaccharides in this entry.

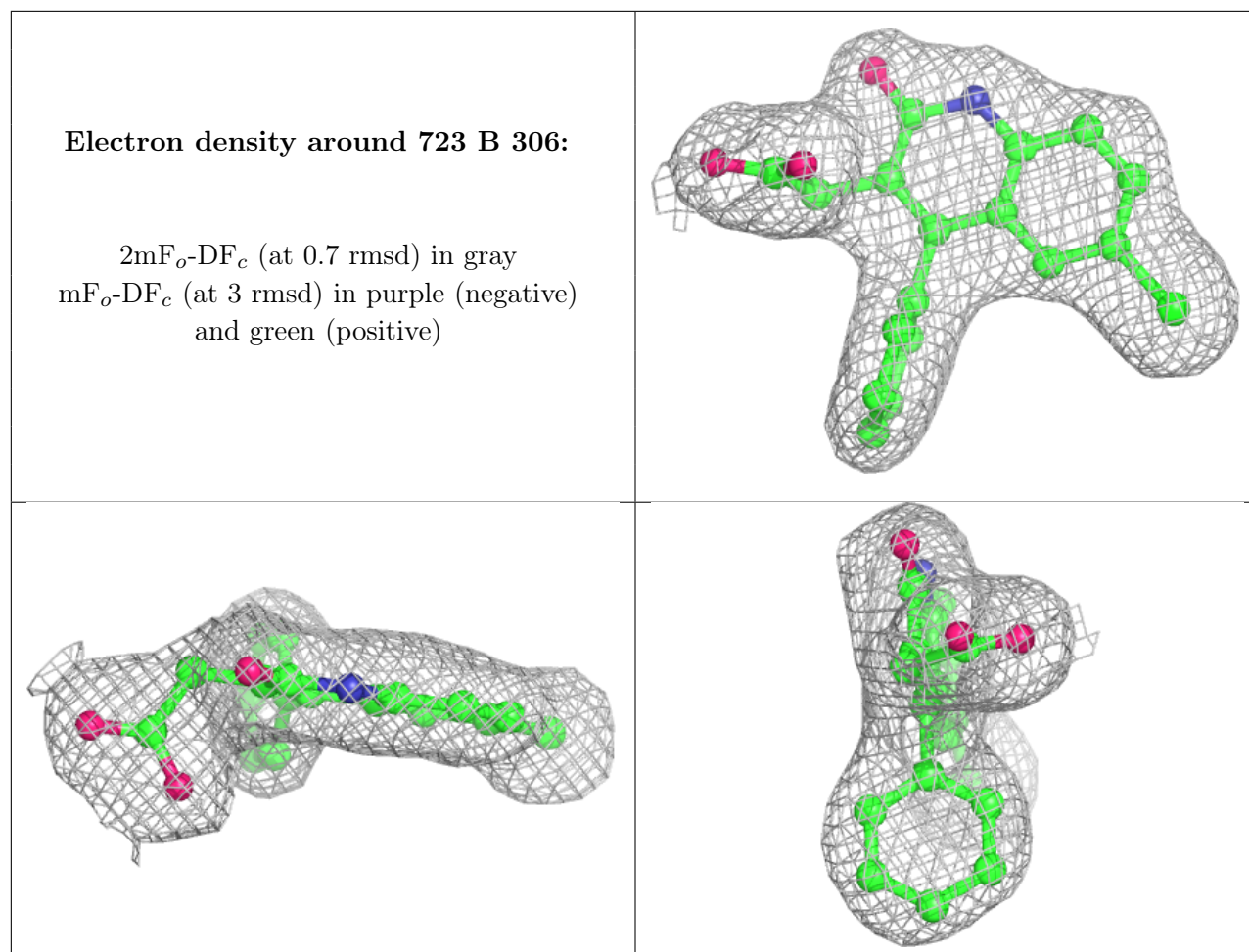
6.4 Ligands [i](#)

In the following table, the Atoms column lists the number of modelled atoms in the group and the number defined in the chemical component dictionary. The B-factors column lists the minimum, median, 95th percentile and maximum values of B factors of atoms in the group. The column labelled ‘Q < 0.9’ lists the number of atoms with occupancy less than 0.9.

Mol	Type	Chain	Res	Atoms	RSCC	RSR	B-factors(\AA^2)	Q<0.9
3	EDO	B	304	4/4	0.66	0.28	56,61,62,69	0
3	EDO	B	302	4/4	0.75	0.21	55,56,56,57	0
3	EDO	B	303	4/4	0.81	0.15	53,55,58,58	0
3	EDO	B	305	4/4	0.81	0.33	42,49,55,56	0
3	EDO	C	501	4/4	0.87	0.15	57,59,61,63	0
3	EDO	D	302	4/4	0.91	0.12	41,49,51,54	0
2	MG	B	301	1/1	0.94	0.09	47,47,47,47	0
2	MG	D	301	1/1	0.95	0.06	45,45,45,45	0
4	723	D	303	22/22	0.95	0.12	40,45,49,51	0
4	723	B	306	22/22	0.96	0.12	43,46,51,51	0

The following is a graphical depiction of the model fit to experimental electron density of all instances of the Ligand of Interest. In addition, ligands with molecular weight > 250 and outliers as shown on the geometry validation Tables will also be included. Each fit is shown from different orientation to approximate a three-dimensional view.





6.5 Other polymers [i](#)

There are no such residues in this entry.