



Full wwPDB X-ray Structure Validation Report ⓘ

Jun 12, 2024 – 02:00 PM EDT

PDB ID : 1C1Z
Title : CRYSTAL STRUCTURE OF HUMAN BETA-2-GLYCOPROTEIN-I
(APOLIPOPROTEIN-H)
Authors : Schwarzenbacher, R.; Zeth, K.; Diederichs, K.; Gries, A.; Kostner, G.M.; Lag-
gner, P.; Prassl, R.
Deposited on : 1999-07-22
Resolution : 2.87 Å(reported)

This is a Full wwPDB X-ray Structure Validation Report for a publicly released PDB entry.

We welcome your comments at validation@mail.wwpdb.org

A user guide is available at

<https://www.wwpdb.org/validation/2017/XrayValidationReportHelp>

with specific help available everywhere you see the ⓘ symbol.

The types of validation reports are described at

<http://www.wwpdb.org/validation/2017/FAQs#types>.

The following versions of software and data (see [references ⓘ](#)) were used in the production of this report:

MolProbity : 4.02b-467
Mogul : 1.8.5 (274361), CSD as541be (2020)
Xtriage (Phenix) : 1.13
EDS : 2.36.2
Percentile statistics : 20191225.v01 (using entries in the PDB archive December 25th 2019)
Refmac : 5.8.0158
CCP4 : 7.0.044 (Gargrove)
Ideal geometry (proteins) : Engh & Huber (2001)
Ideal geometry (DNA, RNA) : Parkinson et al. (1996)
Validation Pipeline (wwPDB-VP) : 2.36.2

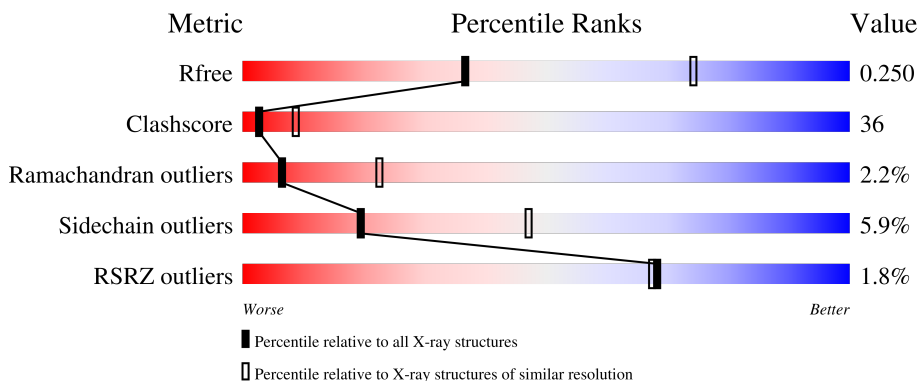
1 Overall quality at a glance

The following experimental techniques were used to determine the structure:

X-RAY DIFFRACTION


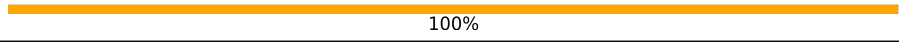
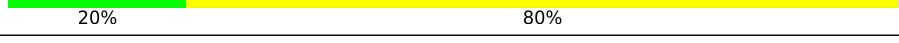

The reported resolution of this entry is 2.87 Å.

Percentile scores (ranging between 0-100) for global validation metrics of the entry are shown in the following graphic. The table shows the number of entries on which the scores are based.



Metric	Whole archive (#Entries)	Similar resolution (#Entries, resolution range(Å))
R_{free}	130704	2691 (2.90-2.86)
Clashscore	141614	2947 (2.90-2.86)
Ramachandran outliers	138981	2868 (2.90-2.86)
Sidechain outliers	138945	2871 (2.90-2.86)
RSRZ outliers	127900	2629 (2.90-2.86)

The table below summarises the geometric issues observed across the polymeric chains and their fit to the electron density. The red, orange, yellow and green segments of the lower bar indicate the fraction of residues that contain outliers for ≥ 3 , 2, 1 and 0 types of geometric quality criteria respectively. A grey segment represents the fraction of residues that are not modelled. The numeric value for each fraction is indicated below the corresponding segment, with a dot representing fractions $\leq 5\%$. The upper red bar (where present) indicates the fraction of residues that have poor fit to the electron density. The numeric value is given above the bar.

Mol	Chain	Length	Quality of chain
1	A	326	
2	B	2	
3	C	5	
4	D	3	

The following table lists non-polymeric compounds, carbohydrate monomers and non-standard

residues in protein, DNA, RNA chains that are outliers for geometric or electron-density-fit criteria:

Mol	Type	Chain	Res	Chirality	Geometry	Clashes	Electron density
2	NAG	B	1	X	-	-	-
4	MAN	D	3	X	-	-	X
5	NAG	A	329	X	-	-	-

2 Entry composition i

There are 6 unique types of molecules in this entry. The entry contains 2705 atoms, of which 0 are hydrogens and 0 are deuteriums.

In the tables below, the ZeroOcc column contains the number of atoms modelled with zero occupancy, the AltConf column contains the number of residues with at least one atom in alternate conformation and the Trace column contains the number of residues modelled with at most 2 atoms.

- Molecule 1 is a protein called BETA2-GLYCOPROTEIN-I.

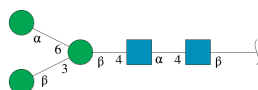
Mol	Chain	Residues	Atoms					ZeroOcc	AltConf	Trace
			Total	C	N	O	S			
1	A	326	2541	1622	419	474	26	0	0	0

- Molecule 2 is an oligosaccharide called 2-acetamido-2-deoxy-alpha-D-glucopyranose-(1-4)-2-acetamido-2-deoxy-beta-D-glucopyranose.



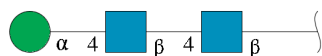
Mol	Chain	Residues	Atoms				ZeroOcc	AltConf	Trace
			Total	C	N	O			
2	B	2	28	16	2	10	0	0	0

- Molecule 3 is an oligosaccharide called beta-D-mannopyranose-(1-3)-[alpha-D-mannopyranose-(1-6)]beta-D-mannopyranose-(1-4)-2-acetamido-2-deoxy-alpha-D-glucopyranose-(1-4)-2-acetamido-2-deoxy-beta-D-glucopyranose.



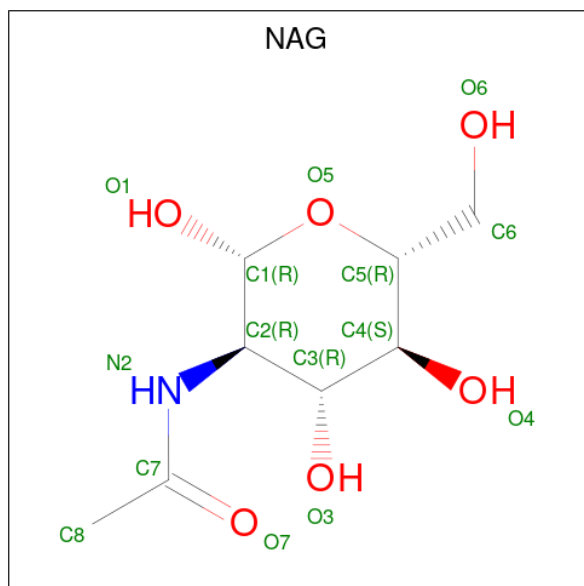
Mol	Chain	Residues	Atoms				ZeroOcc	AltConf	Trace
			Total	C	N	O			
3	C	5	61	34	2	25	0	0	0

- Molecule 4 is an oligosaccharide called alpha-D-mannopyranose-(1-4)-2-acetamido-2-deoxy-beta-D-glucopyranose-(1-4)-2-acetamido-2-deoxy-beta-D-glucopyranose.



Mol	Chain	Residues	Atoms			ZeroOcc	AltConf	Trace	
			Total	C	N				O
4	D	3	39	22	2	15	0	0	0

- Molecule 5 is 2-acetamido-2-deoxy-beta-D-glucopyranose (three-letter code: NAG) (formula: $C_8H_{15}NO_6$).



Mol	Chain	Residues	Atoms			ZeroOcc	AltConf	
			Total	C	N			O
5	A	1	14	8	1	5	0	0

- Molecule 6 is water.

Mol	Chain	Residues	Atoms		ZeroOcc	AltConf
			Total	O		
6	A	22	22	22	0	0



4 Data and refinement statistics i

Property	Value	Source
Space group	C 2 2 21	Depositor
Cell constants a, b, c, α , β , γ	159.50Å 164.80Å 114.30Å 90.00° 90.00° 90.00°	Depositor
Resolution (Å)	50.00 – 2.87 51.23 – 2.88	Depositor EDS
% Data completeness (in resolution range)	93.2 (50.00-2.87) 93.8 (51.23-2.88)	Depositor EDS
R_{merge}	0.09	Depositor
R_{sym}	(Not available)	Depositor
$\langle I/\sigma(I) \rangle$ ¹	2.16 (at 2.86Å)	Xtriage
Refinement program	CNS	Depositor
R, R_{free}	0.238 , 0.244 0.243 , 0.250	Depositor DCC
R_{free} test set	1608 reflections (4.96%)	wwPDB-VP
Wilson B-factor (Å ²)	49.6	Xtriage
Anisotropy	0.334	Xtriage
Bulk solvent k_{sol} (e/Å ³), B_{sol} (Å ²)	0.33 , 65.8	EDS
L-test for twinning ²	$\langle L \rangle = 0.43$, $\langle L^2 \rangle = 0.25$	Xtriage
Estimated twinning fraction	0.053 for -k,-h,-l 0.027 for -1/2*h-1/2*k+1,-1/2*h-1/2*k-1,1/2 *h-1/2*k 0.037 for -1/2*h-1/2*k-1,-1/2*h-1/2*k+1,-1/ 2*h+1/2*k 0.035 for -1/2*h+1/2*k-1,1/2*h-1/2*k-1,-1/2 *h-1/2*k 0.027 for -1/2*h+1/2*k+1,1/2*h-1/2*k+1,1/ 2*h+1/2*k	Xtriage
F_o, F_c correlation	0.89	EDS
Total number of atoms	2705	wwPDB-VP
Average B, all atoms (Å ²)	55.0	wwPDB-VP

Xtriage's analysis on translational NCS is as follows: *The largest off-origin peak in the Patterson function is 4.52% of the height of the origin peak. No significant pseudotranslation is detected.*

¹Intensities estimated from amplitudes.

²Theoretical values of $\langle |L| \rangle$, $\langle L^2 \rangle$ for acentric reflections are 0.5, 0.333 respectively for untwinned datasets, and 0.375, 0.2 for perfectly twinned datasets.

5 Model quality [i](#)

5.1 Standard geometry [i](#)

Bond lengths and bond angles in the following residue types are not validated in this section: MAN, BMA, NAG, NDG

The Z score for a bond length (or angle) is the number of standard deviations the observed value is removed from the expected value. A bond length (or angle) with $|Z| > 5$ is considered an outlier worth inspection. RMSZ is the root-mean-square of all Z scores of the bond lengths (or angles).

Mol	Chain	Bond lengths		Bond angles	
		RMSZ	# $ Z > 5$	RMSZ	# $ Z > 5$
1	A	0.45	1/2618 (0.0%)	0.69	1/3556 (0.0%)

All (1) bond length outliers are listed below:

Mol	Chain	Res	Type	Atoms	Z	Observed(Å)	Ideal(Å)
1	A	315	PHE	C-N	-5.20	1.22	1.34

All (1) bond angle outliers are listed below:

Mol	Chain	Res	Type	Atoms	Z	Observed(°)	Ideal(°)
1	A	315	PHE	C-N-CA	-9.62	97.66	121.70

There are no chirality outliers.

There are no planarity outliers.

5.2 Too-close contacts [i](#)

In the following table, the Non-H and H(model) columns list the number of non-hydrogen atoms and hydrogen atoms in the chain respectively. The H(added) column lists the number of hydrogen atoms added and optimized by MolProbity. The Clashes column lists the number of clashes within the asymmetric unit, whereas Symm-Clashes lists symmetry-related clashes.

Mol	Chain	Non-H	H(model)	H(added)	Clashes	Symm-Clashes
1	A	2541	0	2481	173	0
2	B	28	0	24	2	0
3	C	61	0	51	1	0
4	D	39	0	34	1	0
5	A	14	0	13	0	0
6	A	22	0	0	1	0

Continued on next page...

Continued from previous page...

Mol	Chain	Non-H	H(model)	H(added)	Clashes	Symm-Clashes
All	All	2705	0	2603	177	0

The all-atom clashscore is defined as the number of clashes found per 1000 atoms (including hydrogen atoms). The all-atom clashscore for this structure is 36.

All (177) close contacts within the same asymmetric unit are listed below, sorted by their clash magnitude.

Atom-1	Atom-2	Interatomic distance (Å)	Clash overlap (Å)
2:B:1:NAG:H62	2:B:2:NDG:HA	1.16	1.07
1:A:64:VAL:HG12	1:A:82:GLU:HB3	1.58	0.85
1:A:247:LEU:HD12	1:A:247:LEU:H	1.41	0.85
1:A:186:CYS:HG	1:A:229:CYS:HG	0.92	0.84
1:A:196:PHE:HE2	1:A:214:GLY:HA3	1.42	0.83
1:A:159:HIS:CE1	1:A:183:GLU:HB2	2.14	0.82
1:A:132:ALA:HB2	1:A:181:CYS:SG	2.20	0.81
1:A:245:CYS:HG	1:A:296:CYS:HG	0.83	0.79
2:B:1:NAG:H62	2:B:2:NDG:N2	1.96	0.78
1:A:196:PHE:CE2	1:A:214:GLY:HA3	2.19	0.76
1:A:177:LYS:HD3	1:A:177:LYS:H	1.50	0.76
1:A:231:LYS:HG3	1:A:232:LEU:HD12	1.68	0.75
1:A:185:LYS:HG2	1:A:206:TYR:CD2	2.23	0.74
1:A:190:SER:H	1:A:238:MET:HE1	1.53	0.74
1:A:248:PRO:HG3	1:A:301:ILE:HG21	1.70	0.72
1:A:155:CYS:SG	1:A:161:MET:HB2	2.30	0.71
1:A:177:LYS:H	1:A:177:LYS:CD	1.99	0.71
1:A:136:VAL:O	1:A:151:ALA:HA	1.91	0.71
1:A:305:LYS:H	1:A:305:LYS:NZ	1.87	0.71
1:A:189:PRO:HD2	1:A:199:TYR:CD2	2.26	0.70
1:A:281:CYS:HG	1:A:306:CYS:HG	0.70	0.70
1:A:29:THR:HG23	1:A:44:LYS:HG2	1.73	0.70
1:A:264:GLN:H	1:A:264:GLN:NE2	1.89	0.69
1:A:263:ILE:HG22	1:A:264:GLN:HE21	1.57	0.69
1:A:195:GLY:HA3	1:A:241:CYS:SG	2.32	0.69
1:A:315:PHE:CD2	1:A:315:PHE:O	2.46	0.69
1:A:32:CYS:SG	1:A:38:SER:HB3	2.32	0.69
3:C:3:BMA:C6	3:C:5:MAN:C1	2.70	0.68
1:A:251:LYS:NZ	1:A:312:SER:HB2	2.10	0.67
1:A:247:LEU:H	1:A:247:LEU:CD1	2.08	0.66
1:A:128:ILE:HD12	1:A:134:LEU:HD22	1.78	0.66
1:A:314:ALA:HB1	1:A:317:LYS:NZ	2.12	0.64
1:A:155:CYS:HG	1:A:181:CYS:HG	0.67	0.64

Continued on next page...

Continued from previous page...

Atom-1	Atom-2	Interatomic distance (Å)	Clash overlap (Å)
1:A:284:LYS:N	1:A:284:LYS:HD3	2.13	0.64
1:A:305:LYS:H	1:A:305:LYS:HZ1	1.45	0.63
1:A:40:GLY:HA3	1:A:43:ARG:HH22	1.64	0.63
1:A:186:CYS:CB	1:A:229:CYS:HG	2.12	0.62
1:A:177:LYS:HD3	1:A:177:LYS:N	2.14	0.61
1:A:307:PHE:CE2	1:A:309:GLU:HB2	2.34	0.61
1:A:83:TYR:CD1	1:A:107:GLU:HA	2.35	0.61
1:A:310:HIS:CD2	1:A:317:LYS:HG3	2.36	0.61
1:A:150:THR:HG22	1:A:168:THR:CG2	2.32	0.60
1:A:136:VAL:CG2	1:A:152:VAL:HB	2.32	0.59
1:A:71:LEU:HB2	1:A:76:VAL:CG2	2.32	0.59
1:A:43:ARG:HG3	1:A:43:ARG:HH11	1.68	0.59
1:A:161:MET:HA	1:A:180:GLU:O	2.02	0.59
1:A:255:VAL:HB	1:A:278:SER:HB2	1.84	0.59
1:A:248:PRO:HG3	1:A:301:ILE:CG2	2.33	0.59
1:A:189:PRO:HD2	1:A:199:TYR:CE2	2.39	0.58
1:A:314:ALA:HB1	1:A:317:LYS:HZ3	1.69	0.58
1:A:135:ARG:NE	1:A:135:ARG:HA	2.18	0.58
1:A:151:ALA:HB3	1:A:167:ILE:HD11	1.85	0.58
1:A:134:LEU:HB3	1:A:153:PHE:CD2	2.39	0.57
1:A:156:LEU:O	1:A:159:HIS:HB2	2.03	0.57
1:A:247:LEU:HD12	1:A:247:LEU:N	2.16	0.57
1:A:250:LYS:O	1:A:264:GLN:HG2	2.05	0.57
1:A:152:VAL:HG22	1:A:166:THR:OG1	2.05	0.57
1:A:244:SER:O	1:A:299:GLY:HA2	2.05	0.56
1:A:134:LEU:HB3	1:A:153:PHE:CE2	2.40	0.56
1:A:124:PRO:HA	1:A:144:ASN:ND2	2.20	0.56
1:A:248:PRO:HG2	1:A:301:ILE:HD13	1.88	0.56
1:A:155:CYS:CB	1:A:181:CYS:HG	2.16	0.55
1:A:289:SER:HB3	1:A:323:VAL:HB	1.88	0.55
1:A:190:SER:N	1:A:238:MET:HE1	2.19	0.55
1:A:68:ALA:O	1:A:76:VAL:HG11	2.08	0.54
1:A:194:ASN:C	1:A:216:HIS:HD1	2.11	0.54
1:A:136:VAL:HG21	1:A:152:VAL:HB	1.90	0.54
1:A:194:ASN:O	1:A:216:HIS:ND1	2.41	0.54
1:A:196:PHE:H	1:A:196:PHE:HD2	1.56	0.53
1:A:283:ASN:O	1:A:285:GLU:N	2.41	0.53
1:A:245:CYS:CB	1:A:296:CYS:HG	2.18	0.53
1:A:211:ALA:HB3	1:A:227:ILE:HG13	1.90	0.53
1:A:284:LYS:HD3	1:A:284:LYS:H	1.73	0.53
1:A:72:GLU:O	1:A:73:ASN:HB2	2.07	0.53

Continued on next page...

Continued from previous page...

Atom-1	Atom-2	Interatomic distance (Å)	Clash overlap (Å)
1:A:196:PHE:N	1:A:196:PHE:CD2	2.77	0.52
1:A:314:ALA:O	1:A:316:TRP:HB3	2.09	0.52
1:A:128:ILE:CD1	1:A:134:LEU:HD22	2.39	0.52
1:A:219:TYR:CD1	1:A:219:TYR:N	2.78	0.52
1:A:232:LEU:HD12	1:A:232:LEU:N	2.25	0.52
1:A:153:PHE:O	1:A:161:MET:HE1	2.09	0.52
1:A:4:CYS:HB3	1:A:53:TRP:NE1	2.25	0.51
1:A:185:LYS:HA	1:A:206:TYR:HA	1.92	0.51
1:A:80:THR:O	1:A:82:GLU:N	2.42	0.51
1:A:251:LYS:CE	1:A:312:SER:HB2	2.41	0.51
1:A:288:CYS:CB	1:A:326:CYS:HG	2.22	0.51
1:A:196:PHE:HD2	1:A:196:PHE:N	2.08	0.51
1:A:30:TYR:O	1:A:42:MET:HG3	2.10	0.50
1:A:129:PRO:HD3	1:A:178:LEU:HD23	1.93	0.50
1:A:150:THR:HG22	1:A:168:THR:HG22	1.91	0.50
1:A:264:GLN:H	1:A:264:GLN:HE21	1.59	0.50
1:A:64:VAL:HA	1:A:82:GLU:HA	1.93	0.50
1:A:123:CYS:CB	1:A:169:CYS:HG	2.19	0.50
1:A:96:TYR:CE2	1:A:119:ALA:HB3	2.45	0.50
1:A:283:ASN:C	1:A:283:ASN:HD22	2.15	0.50
1:A:227:ILE:HG21	1:A:237:ALA:O	2.12	0.49
1:A:231:LYS:CG	1:A:232:LEU:HD12	2.41	0.49
1:A:219:TYR:CD2	1:A:243:ALA:HA	2.48	0.49
1:A:252:ALA:H	1:A:264:GLN:NE2	2.11	0.49
1:A:193:ASP:O	1:A:241:CYS:HB2	2.12	0.49
1:A:151:ALA:HB3	1:A:167:ILE:CG1	2.42	0.49
1:A:251:LYS:HA	1:A:264:GLN:CG	2.42	0.49
1:A:40:GLY:HA3	1:A:43:ARG:NH2	2.27	0.49
1:A:307:PHE:HE2	1:A:309:GLU:HB2	1.78	0.49
1:A:43:ARG:HG3	1:A:43:ARG:NH1	2.27	0.48
1:A:150:THR:HG22	1:A:168:THR:HG23	1.94	0.48
1:A:283:ASN:ND2	1:A:284:LYS:NZ	2.62	0.48
1:A:315:PHE:O	1:A:315:PHE:HD2	1.96	0.48
1:A:202:LYS:HE3	1:A:205:LEU:HA	1.95	0.48
1:A:283:ASN:C	1:A:283:ASN:ND2	2.66	0.48
1:A:69:GLY:HA2	1:A:78:TYR:CE2	2.49	0.48
1:A:27:GLU:HB2	1:A:46:ILE:HG12	1.96	0.48
1:A:155:CYS:SG	1:A:161:MET:CB	3.02	0.47
1:A:262:LYS:HB2	1:A:265:GLU:HB2	1.95	0.47
1:A:135:ARG:NE	1:A:135:ARG:CA	2.77	0.47
1:A:202:LYS:HE3	1:A:204:THR:O	2.14	0.47

Continued on next page...

Continued from previous page...

Atom-1	Atom-2	Interatomic distance (Å)	Clash overlap (Å)
1:A:150:THR:CG2	1:A:168:THR:HG22	2.45	0.46
4:D:3:MAN:H62	4:D:3:MAN:O3	2.15	0.46
1:A:29:THR:HG23	1:A:44:LYS:CG	2.44	0.46
1:A:190:SER:H	1:A:238:MET:CE	2.24	0.46
1:A:281:CYS:HA	1:A:320:ALA:CB	2.45	0.46
1:A:64:VAL:HG12	1:A:82:GLU:CB	2.38	0.46
1:A:156:LEU:HD12	1:A:156:LEU:HA	1.74	0.46
1:A:185:LYS:HG2	1:A:206:TYR:CE2	2.49	0.45
1:A:193:ASP:O	1:A:194:ASN:HB2	2.15	0.45
1:A:314:ALA:O	1:A:315:PHE:C	2.54	0.45
1:A:155:CYS:HA	1:A:181:CYS:SG	2.57	0.45
1:A:83:TYR:CE1	1:A:107:GLU:HB3	2.51	0.45
1:A:83:TYR:CE2	1:A:84:PRO:HB3	2.52	0.45
1:A:97:LEU:HD11	1:A:116:PRO:HB2	1.99	0.45
1:A:91:CYS:CB	1:A:118:CYS:SG	3.06	0.44
1:A:162:PHE:HB2	1:A:180:GLU:HB2	1.99	0.44
1:A:196:PHE:CE2	1:A:214:GLY:CA	2.95	0.44
1:A:159:HIS:ND1	1:A:183:GLU:HB2	2.31	0.44
1:A:282:LYS:HD3	1:A:323:VAL:HG21	1.99	0.44
1:A:209:ASP:O	1:A:228:GLU:HA	2.17	0.44
1:A:254:VAL:HB	1:A:277:VAL:HG13	2.00	0.44
1:A:151:ALA:HB3	1:A:167:ILE:CD1	2.48	0.44
1:A:167:ILE:HG21	1:A:178:LEU:HD12	1.99	0.44
1:A:7:PRO:HD3	1:A:22:TYR:HE1	1.82	0.43
1:A:207:TYR:CE2	1:A:208:LYS:HG2	2.53	0.43
1:A:251:LYS:HA	1:A:264:GLN:HG2	1.99	0.43
1:A:88:SER:HA	1:A:102:SER:HA	2.01	0.43
1:A:125:PRO:HD3	1:A:144:ASN:HD22	1.84	0.43
1:A:283:ASN:O	1:A:284:LYS:C	2.57	0.43
1:A:40:GLY:HA3	1:A:43:ARG:HH12	1.82	0.43
1:A:71:LEU:HB2	1:A:76:VAL:HG22	2.01	0.43
1:A:220:SER:HB3	1:A:272:LEU:HD22	1.99	0.43
1:A:41:GLY:O	1:A:42:MET:HB3	2.19	0.43
1:A:43:ARG:HD2	1:A:58:LEU:HB2	2.01	0.43
1:A:288:CYS:HB2	1:A:325:PRO:O	2.18	0.43
1:A:10:LEU:HA	1:A:11:PRO:HD3	1.92	0.42
1:A:65:CYS:SG	1:A:105:CYS:HA	2.59	0.42
1:A:221:LEU:HD22	1:A:239:PRO:HB2	2.01	0.42
1:A:283:ASN:HD22	1:A:284:LYS:NZ	2.17	0.42
1:A:277:VAL:CG1	1:A:278:SER:N	2.82	0.42
1:A:122:ILE:HG22	1:A:146:LEU:HD23	2.02	0.42

Continued on next page...

Continued from previous page...

Atom-1	Atom-2	Interatomic distance (Å)	Clash overlap (Å)
1:A:195:GLY:HA2	1:A:215:CYS:HA	2.01	0.42
1:A:83:TYR:CZ	1:A:84:PRO:HB3	2.55	0.42
1:A:256:TYR:O	1:A:257:GLN:HB2	2.19	0.42
1:A:264:GLN:H	1:A:264:GLN:CD	2.21	0.42
1:A:295:GLN:CD	1:A:297:ILE:HD11	2.40	0.42
1:A:244:SER:HB3	1:A:271:MET:O	2.20	0.41
1:A:24:PRO:HA	1:A:47:CYS:SG	2.60	0.41
1:A:191:ARG:HG3	1:A:196:PHE:HA	2.01	0.41
1:A:310:HIS:CD2	1:A:317:LYS:CG	3.02	0.41
1:A:251:LYS:HZ3	1:A:312:SER:HB2	1.84	0.41
1:A:316:TRP:H	1:A:317:LYS:HD3	1.86	0.41
1:A:30:TYR:HB3	1:A:58:LEU:CD2	2.51	0.41
1:A:136:VAL:HB	1:A:152:VAL:H	1.86	0.41
1:A:317:LYS:HB2	6:A:346:HOH:O	2.21	0.41
1:A:6:LYS:HA	1:A:7:PRO:HD3	1.86	0.41
1:A:87:ILE:HG13	1:A:89:PHE:CZ	2.55	0.41
1:A:215:CYS:SG	1:A:241:CYS:CB	3.08	0.41
1:A:123:CYS:CB	1:A:169:CYS:SG	3.08	0.41
1:A:276:LYS:O	1:A:277:VAL:HG23	2.20	0.41
1:A:53:TRP:HA	1:A:54:PRO:HD3	1.83	0.40
1:A:243:ALA:O	1:A:299:GLY:N	2.54	0.40

There are no symmetry-related clashes.

5.3 Torsion angles [i](#)

5.3.1 Protein backbone [i](#)

In the following table, the Percentiles column shows the percent Ramachandran outliers of the chain as a percentile score with respect to all X-ray entries followed by that with respect to entries of similar resolution.

The Analysed column shows the number of residues for which the backbone conformation was analysed, and the total number of residues.

Mol	Chain	Analysed	Favoured	Allowed	Outliers	Percentiles
1	A	324/326 (99%)	292 (90%)	25 (8%)	7 (2%)	6 22

All (7) Ramachandran outliers are listed below:

Mol	Chain	Res	Type
1	A	217	ASP
1	A	284	LYS
1	A	314	ALA
1	A	81	PHE
1	A	155	CYS
1	A	258	GLY
1	A	40	GLY

5.3.2 Protein sidechains [i](#)

In the following table, the Percentiles column shows the percent sidechain outliers of the chain as a percentile score with respect to all X-ray entries followed by that with respect to entries of similar resolution.

The Analysed column shows the number of residues for which the sidechain conformation was analysed, and the total number of residues.

Mol	Chain	Analysed	Rotameric	Outliers	Percentiles
1	A	286/286 (100%)	269 (94%)	17 (6%)	19 47

All (17) residues with a non-rotameric sidechain are listed below:

Mol	Chain	Res	Type
1	A	71	LEU
1	A	84	PRO
1	A	89	PHE
1	A	93	THR
1	A	134	LEU
1	A	135	ARG
1	A	156	LEU
1	A	168	THR
1	A	177	LYS
1	A	196	PHE
1	A	204	THR
1	A	247	LEU
1	A	264	GLN
1	A	283	ASN
1	A	284	LYS
1	A	305	LYS
1	A	317	LYS

Sometimes sidechains can be flipped to improve hydrogen bonding and reduce clashes. All (5) such sidechains are listed below:

Mol	Chain	Res	Type
1	A	85	ASN
1	A	144	ASN
1	A	257	GLN
1	A	264	GLN
1	A	283	ASN

5.3.3 RNA [i](#)

There are no RNA molecules in this entry.

5.4 Non-standard residues in protein, DNA, RNA chains [i](#)

There are no non-standard protein/DNA/RNA residues in this entry.

5.5 Carbohydrates [i](#)

10 monosaccharides are modelled in this entry.

In the following table, the Counts columns list the number of bonds (or angles) for which Mogul statistics could be retrieved, the number of bonds (or angles) that are observed in the model and the number of bonds (or angles) that are defined in the Chemical Component Dictionary. The Link column lists molecule types, if any, to which the group is linked. The Z score for a bond length (or angle) is the number of standard deviations the observed value is removed from the expected value. A bond length (or angle) with $|Z| > 2$ is considered an outlier worth inspection. RMSZ is the root-mean-square of all Z scores of the bond lengths (or angles).

Mol	Type	Chain	Res	Link	Bond lengths			Bond angles		
					Counts	RMSZ	$\# Z > 2$	Counts	RMSZ	$\# Z > 2$
2	NAG	B	1	2,1	14,14,15	0.74	0	17,19,21	0.95	1 (5%)
2	NDG	B	2	2	14,14,15	0.74	1 (7%)	17,19,21	1.23	2 (11%)
3	NAG	C	1	3,1	14,14,15	0.57	0	17,19,21	1.05	1 (5%)
3	NDG	C	2	3	14,14,15	0.65	0	17,19,21	0.94	2 (11%)
3	BMA	C	3	3	11,11,12	0.53	0	15,15,17	0.29	0
3	BMA	C	4	3	11,11,12	0.53	0	15,15,17	0.48	0
3	MAN	C	5	3	11,11,12	0.52	0	15,15,17	0.41	0
4	NAG	D	1	4,1	14,14,15	0.54	0	17,19,21	0.64	0
4	NAG	D	2	4	14,14,15	0.64	0	17,19,21	0.61	0
4	MAN	D	3	4	11,11,12	0.69	0	15,15,17	0.90	1 (6%)

In the following table, the Chirals column lists the number of chiral outliers, the number of chiral centers analysed, the number of these observed in the model and the number defined in the

Chemical Component Dictionary. Similar counts are reported in the Torsion and Rings columns. '-' means no outliers of that kind were identified.

Mol	Type	Chain	Res	Link	Chirals	Torsions	Rings
2	NAG	B	1	2,1	1/1/5/7	2/6/23/26	0/1/1/1
2	NDG	B	2	2	-	2/6/23/26	0/1/1/1
3	NAG	C	1	3,1	-	2/6/23/26	0/1/1/1
3	NDG	C	2	3	-	0/6/23/26	0/1/1/1
3	BMA	C	3	3	-	0/2/19/22	0/1/1/1
3	BMA	C	4	3	-	1/2/19/22	0/1/1/1
3	MAN	C	5	3	-	2/2/19/22	0/1/1/1
4	NAG	D	1	4,1	-	2/6/23/26	0/1/1/1
4	NAG	D	2	4	-	2/6/23/26	0/1/1/1
4	MAN	D	3	4	1/1/4/5	2/2/19/22	0/1/1/1

All (1) bond length outliers are listed below:

Mol	Chain	Res	Type	Atoms	Z	Observed(Å)	Ideal(Å)
2	B	2	NDG	C1-C2	2.04	1.55	1.52

All (7) bond angle outliers are listed below:

Mol	Chain	Res	Type	Atoms	Z	Observed(°)	Ideal(°)
2	B	2	NDG	O5-C1-C2	3.05	116.11	111.29
2	B	1	NAG	C4-C3-C2	2.77	115.08	111.02
3	C	1	NAG	C2-N2-C7	-2.60	119.20	122.90
4	D	3	MAN	C1-O5-C5	2.56	115.67	112.19
2	B	2	NDG	C1-O5-C5	2.45	115.51	112.19
3	C	2	NDG	C2-N2-C7	-2.42	119.46	122.90
3	C	2	NDG	C4-C3-C2	-2.05	108.02	111.02

All (2) chirality outliers are listed below:

Mol	Chain	Res	Type	Atom
2	B	1	NAG	C1
4	D	3	MAN	C1

All (15) torsion outliers are listed below:

Mol	Chain	Res	Type	Atoms
2	B	1	NAG	O5-C5-C6-O6
3	C	1	NAG	O5-C5-C6-O6

Continued on next page...

Continued from previous page...

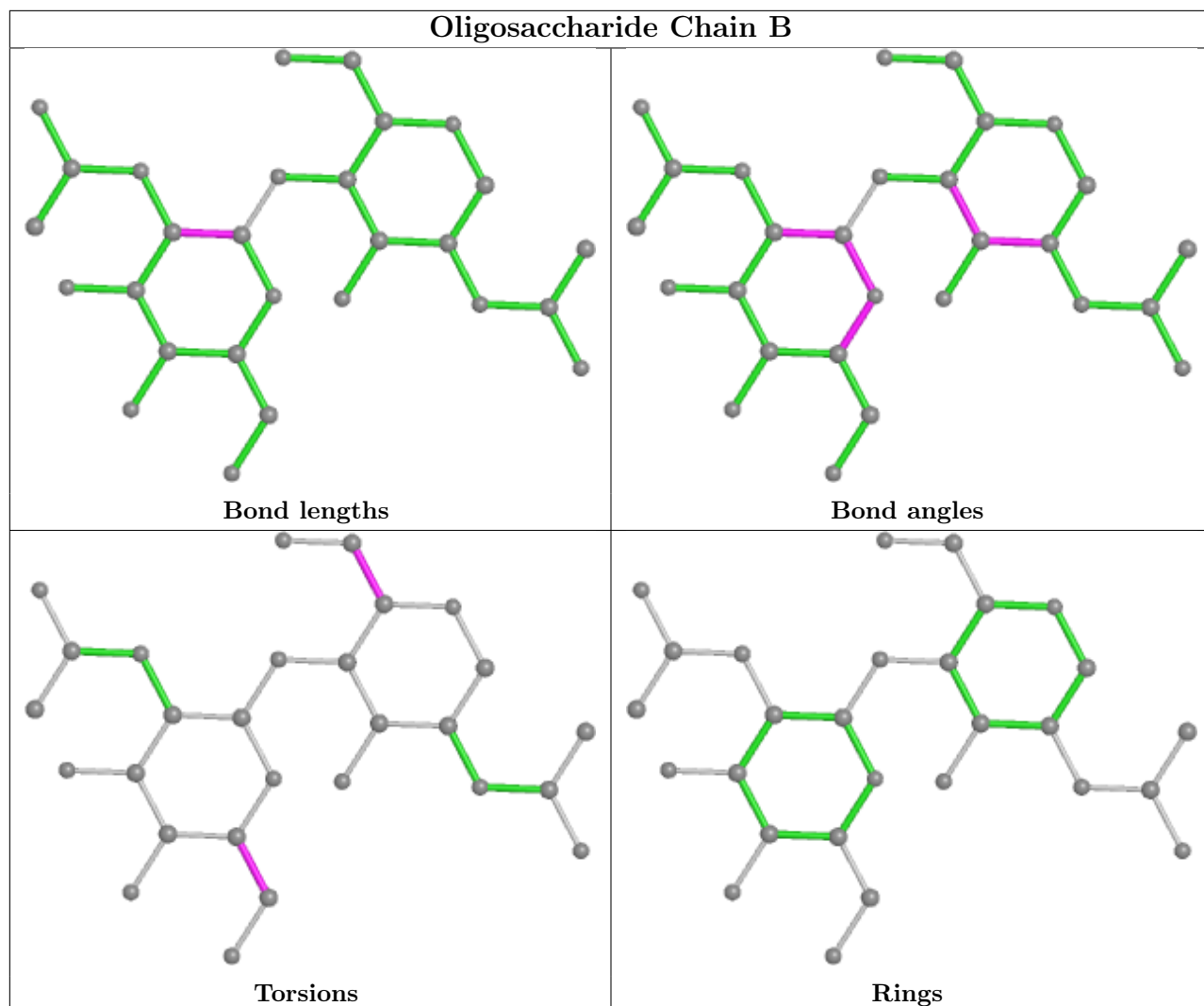
Mol	Chain	Res	Type	Atoms
4	D	1	NAG	C4-C5-C6-O6
3	C	1	NAG	C4-C5-C6-O6
3	C	5	MAN	O5-C5-C6-O6
2	B	2	NDG	O5-C5-C6-O6
2	B	1	NAG	C4-C5-C6-O6
4	D	3	MAN	O5-C5-C6-O6
4	D	3	MAN	C4-C5-C6-O6
3	C	5	MAN	C4-C5-C6-O6
4	D	1	NAG	O5-C5-C6-O6
4	D	2	NAG	O5-C5-C6-O6
3	C	4	BMA	O5-C5-C6-O6
2	B	2	NDG	C4-C5-C6-O6
4	D	2	NAG	C4-C5-C6-O6

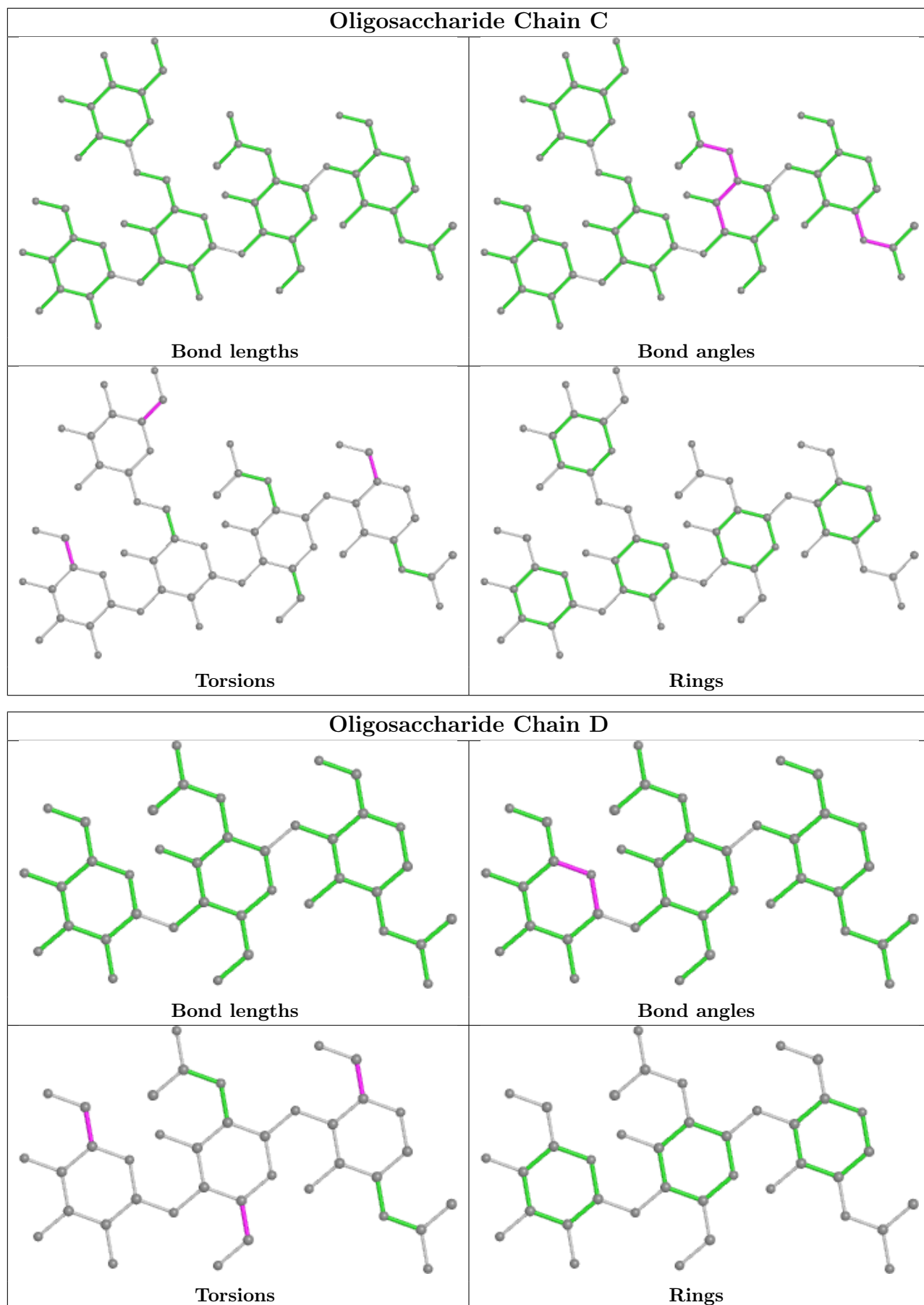
There are no ring outliers.

5 monomers are involved in 4 short contacts:

Mol	Chain	Res	Type	Clashes	Symm-Clashes
3	C	5	MAN	1	0
2	B	1	NAG	2	0
2	B	2	NDG	2	0
3	C	3	BMA	1	0
4	D	3	MAN	1	0

The following is a two-dimensional graphical depiction of Mogul quality analysis of bond lengths, bond angles, torsion angles, and ring geometry for oligosaccharide.





5.6 Ligand geometry [i](#)

1 ligand is modelled in this entry.

In the following table, the Counts columns list the number of bonds (or angles) for which Mogul statistics could be retrieved, the number of bonds (or angles) that are observed in the model and the number of bonds (or angles) that are defined in the Chemical Component Dictionary. The Link column lists molecule types, if any, to which the group is linked. The Z score for a bond length (or angle) is the number of standard deviations the observed value is removed from the expected value. A bond length (or angle) with $|Z| > 2$ is considered an outlier worth inspection. RMSZ is the root-mean-square of all Z scores of the bond lengths (or angles).

Mol	Type	Chain	Res	Link	Bond lengths			Bond angles		
					Counts	RMSZ	# Z > 2	Counts	RMSZ	# Z > 2
5	NAG	A	329	1	14,14,15	0.63	0	17,19,21	0.68	0

In the following table, the Chirals column lists the number of chiral outliers, the number of chiral centers analysed, the number of these observed in the model and the number defined in the Chemical Component Dictionary. Similar counts are reported in the Torsion and Rings columns. '-' means no outliers of that kind were identified.

Mol	Type	Chain	Res	Link	Chirals	Torsions	Rings
5	NAG	A	329	1	1/1/5/7	0/6/23/26	0/1/1/1

There are no bond length outliers.

There are no bond angle outliers.

All (1) chirality outliers are listed below:

Mol	Chain	Res	Type	Atom
5	A	329	NAG	C1

There are no torsion outliers.

There are no ring outliers.

No monomer is involved in short contacts.

5.7 Other polymers [i](#)

There are no such residues in this entry.

5.8 Polymer linkage issues [i](#)

There are no chain breaks in this entry.

6 Fit of model and data [i](#)

6.1 Protein, DNA and RNA chains [i](#)

In the following table, the column labelled '#RSRZ > 2' contains the number (and percentage) of RSRZ outliers, followed by percent RSRZ outliers for the chain as percentile scores relative to all X-ray entries and entries of similar resolution. The OWAB column contains the minimum, median, 95th percentile and maximum values of the occupancy-weighted average B-factor per residue. The column labelled 'Q < 0.9' lists the number of (and percentage) of residues with an average occupancy less than 0.9.

Mol	Chain	Analysed	<RSRZ>	#RSRZ>2	OWAB(Å ²)	Q<0.9
1	A	326/326 (100%)	0.27	6 (1%) 68 67	16, 50, 89, 153	0

All (6) RSRZ outliers are listed below:

Mol	Chain	Res	Type	RSRZ
1	A	313	LEU	5.3
1	A	315	PHE	3.9
1	A	136	VAL	2.9
1	A	312	SER	2.3
1	A	184	VAL	2.0
1	A	255	VAL	2.0

6.2 Non-standard residues in protein, DNA, RNA chains [i](#)

There are no non-standard protein/DNA/RNA residues in this entry.

6.3 Carbohydrates [i](#)

In the following table, the Atoms column lists the number of modelled atoms in the group and the number defined in the chemical component dictionary. The B-factors column lists the minimum, median, 95th percentile and maximum values of B factors of atoms in the group. The column labelled 'Q < 0.9' lists the number of atoms with occupancy less than 0.9.

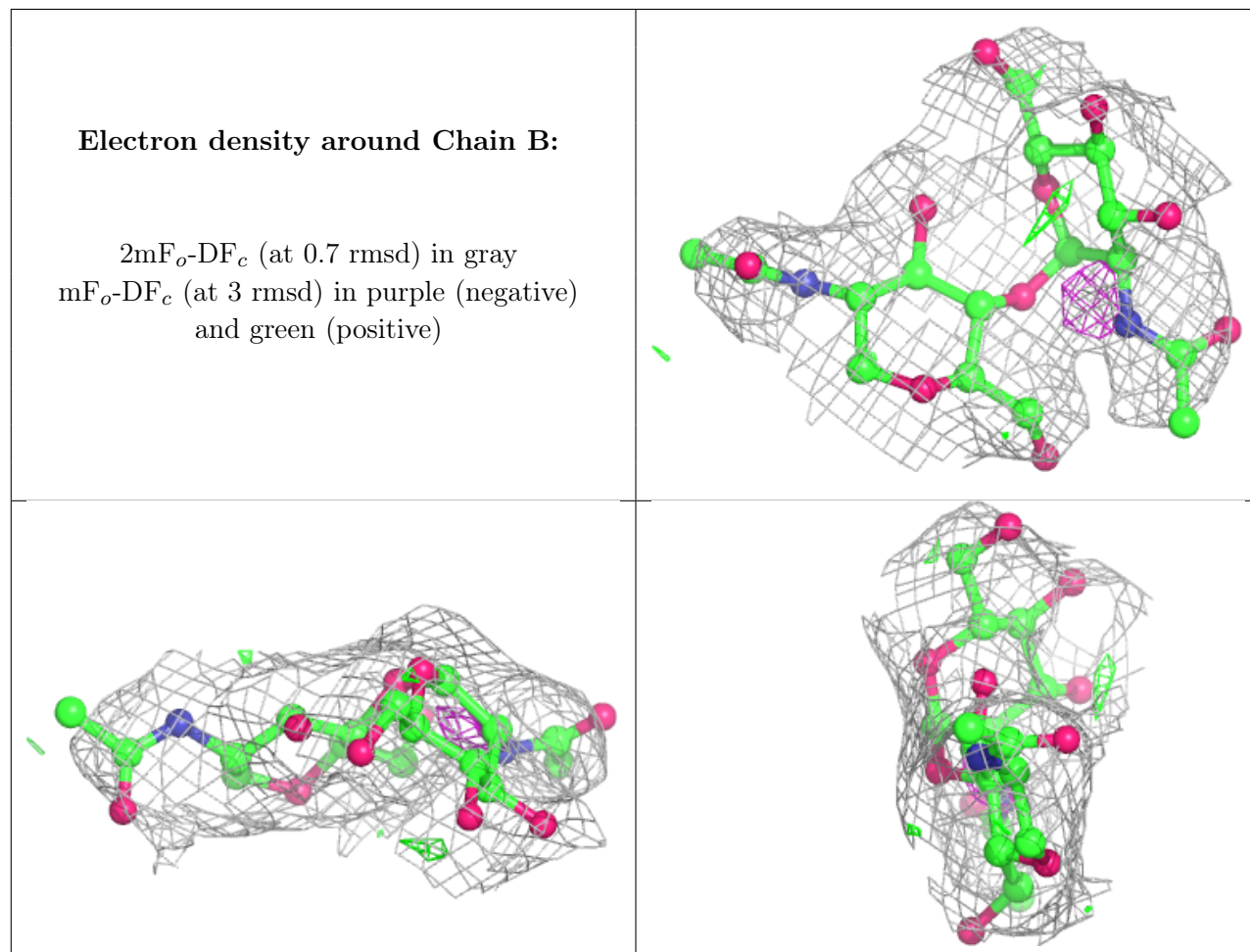
Mol	Type	Chain	Res	Atoms	RSCC	RSR	B-factors(Å ²)	Q<0.9
3	MAN	C	5	11/12	0.70	0.29	126,144,147,152	0
3	BMA	C	4	11/12	0.71	0.25	142,146,149,150	0
2	NDG	B	2	14/15	0.79	0.27	130,140,144,147	0
4	NAG	D	2	14/15	0.79	0.19	113,133,146,160	0
4	MAN	D	3	11/12	0.79	0.41	145,162,166,171	0
3	BMA	C	3	11/12	0.87	0.16	133,137,143,144	0

Continued on next page...

Continued from previous page...

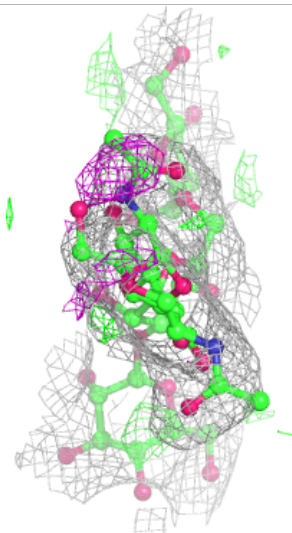
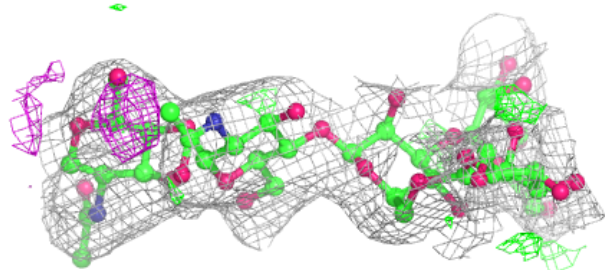
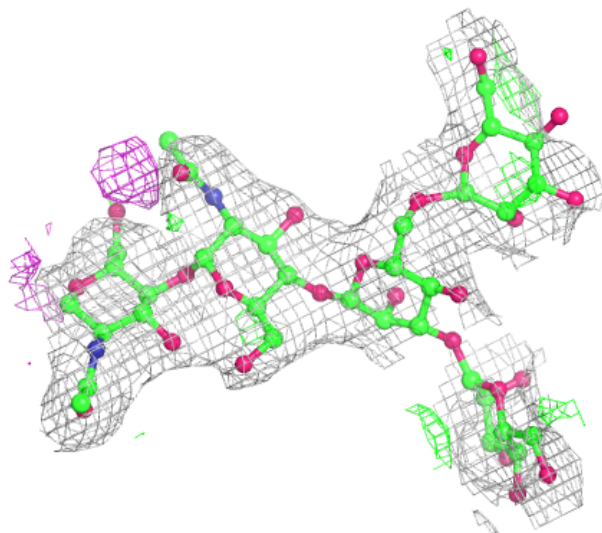
Mol	Type	Chain	Res	Atoms	RSCC	RSR	B-factors(\AA^2)	Q<0.9
2	NAG	B	1	14/15	0.90	0.19	120,128,133,142	0
3	NDG	C	2	14/15	0.91	0.17	89,104,112,124	0
4	NAG	D	1	14/15	0.95	0.15	75,85,99,113	0
3	NAG	C	1	14/15	0.96	0.22	43,63,81,84	0

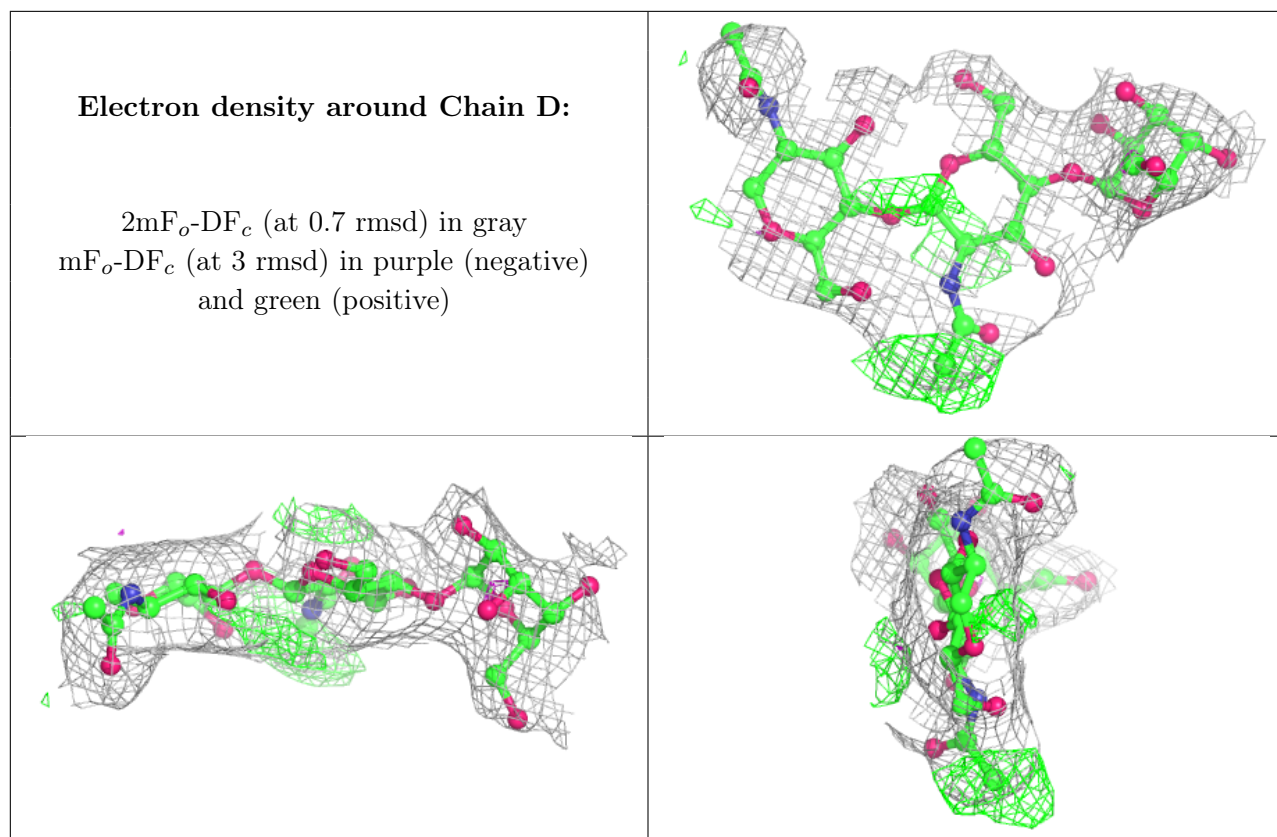
The following is a graphical depiction of the model fit to experimental electron density for oligosaccharide. Each fit is shown from different orientation to approximate a three-dimensional view.



Electron density around Chain C:

$2mF_o-DF_c$ (at 0.7 rmsd) in gray
 mF_o-DF_c (at 3 rmsd) in purple (negative)
and green (positive)





6.4 Ligands [i](#)

In the following table, the Atoms column lists the number of modelled atoms in the group and the number defined in the chemical component dictionary. The B-factors column lists the minimum, median, 95th percentile and maximum values of B factors of atoms in the group. The column labelled 'Q< 0.9' lists the number of atoms with occupancy less than 0.9.

Mol	Type	Chain	Res	Atoms	RSCC	RSR	B-factors(\AA^2)	Q<0.9
5	NAG	A	329	14/15	0.87	0.19	106,113,120,124	0

6.5 Other polymers [i](#)

There are no such residues in this entry.