



## Full wwPDB X-ray Structure Validation Report ⓘ

May 18, 2020 – 08:44 am BST

PDB ID : 3C74  
Title : X-ray structure of the uridine phosphorylase from salmonella typhimurium in complex with 2,2'-anhydrouridine at 2.38a resolution  
Authors : Lashkov, A.A.; Mikhailov, A.M.  
Deposited on : 2008-02-06  
Resolution : 2.38 Å(reported)

This is a Full wwPDB X-ray Structure Validation Report for a publicly released PDB entry.

We welcome your comments at [validation@mail.wwpdb.org](mailto:validation@mail.wwpdb.org)

A user guide is available at

<https://www.wwpdb.org/validation/2017/XrayValidationReportHelp>

with specific help available everywhere you see the ⓘ symbol.

---

The following versions of software and data (see [references ⓘ](#)) were used in the production of this report:

MolProbity : 4.02b-467  
Mogul : 1.8.5 (274361), CSD as541be (2020)  
Xtriage (Phenix) : 1.13  
EDS : 2.11  
Percentile statistics : 20191225.v01 (using entries in the PDB archive December 25th 2019)  
Refmac : 5.8.0158  
CCP4 : 7.0.044 (Gargrove)  
Ideal geometry (proteins) : Engh & Huber (2001)  
Ideal geometry (DNA, RNA) : Parkinson et al. (1996)  
Validation Pipeline (wwPDB-VP) : 2.11

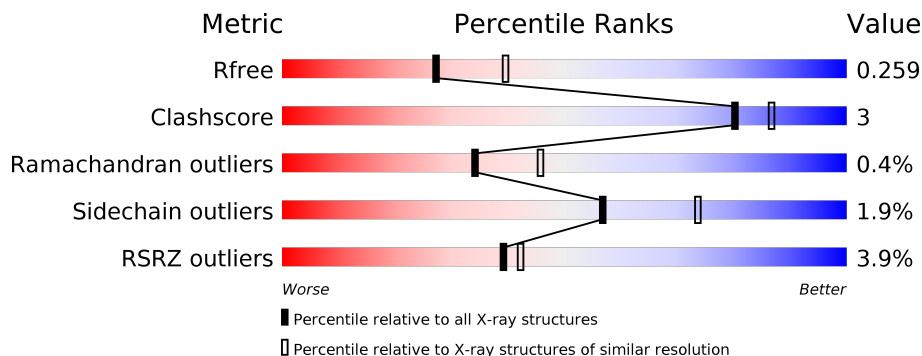
# 1 Overall quality at a glance

The following experimental techniques were used to determine the structure:

*X-RAY DIFFRACTION*

The reported resolution of this entry is 2.38 Å.

Percentile scores (ranging between 0-100) for global validation metrics of the entry are shown in the following graphic. The table shows the number of entries on which the scores are based.



Metric	Whole archive (#Entries)	Similar resolution (#Entries, resolution range(Å))
$R_{free}$	130704	5509 (2.40-2.36)
Clashscore	141614	6082 (2.40-2.36)
Ramachandran outliers	138981	5973 (2.40-2.36)
Sidechain outliers	138945	5975 (2.40-2.36)
RSRZ outliers	127900	5397 (2.40-2.36)

The table below summarises the geometric issues observed across the polymeric chains and their fit to the electron density. The red, orange, yellow and green segments on the lower bar indicate the fraction of residues that contain outliers for  $\geq 3$ , 2, 1 and 0 types of geometric quality criteria respectively. A grey segment represents the fraction of residues that are not modelled. The numeric value for each fraction is indicated below the corresponding segment, with a dot representing fractions  $\leq 5\%$ . The upper red bar (where present) indicates the fraction of residues that have poor fit to the electron density. The numeric value is given above the bar.

Mol	Chain	Length	Quality of chain
1	A	253	
1	B	253	
1	C	253	
1	D	253	
1	E	253	
1	F	253	

## 2 Entry composition [i](#)

There are 3 unique types of molecules in this entry. The entry contains 11475 atoms, of which 0 are hydrogens and 0 are deuteriums.

In the tables below, the ZeroOcc column contains the number of atoms modelled with zero occupancy, the AltConf column contains the number of residues with at least one atom in alternate conformation and the Trace column contains the number of residues modelled with at most 2 atoms.

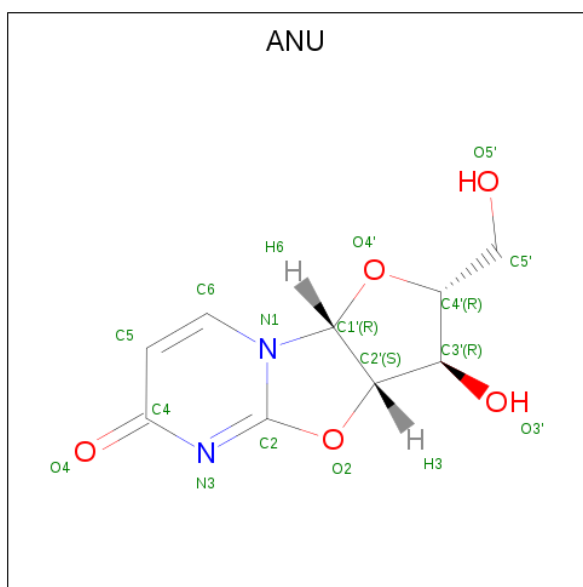
- Molecule 1 is a protein called Uridine phosphorylase.

Mol	Chain	Residues	Atoms					ZeroOcc	AltConf	Trace
			Total	C	N	O	S			
1	A	242	1814	1138	319	346	11	0	0	0
1	B	244	1827	1145	322	349	11	0	0	0
1	C	243	1818	1140	321	346	11	0	0	0
1	D	251	1885	1180	332	361	12	0	0	0
1	E	241	1805	1133	318	343	11	0	0	0
1	F	248	1856	1163	327	354	12	0	0	0

There are 6 discrepancies between the modelled and reference sequences:

Chain	Residue	Modelled	Actual	Comment	Reference
A	1001	LYS	-	expression tag	UNP P0A1F6
B	2001	LYS	-	expression tag	UNP P0A1F6
C	3001	LYS	-	expression tag	UNP P0A1F6
D	4001	LYS	-	expression tag	UNP P0A1F6
E	5001	LYS	-	expression tag	UNP P0A1F6
F	6001	LYS	-	expression tag	UNP P0A1F6

- Molecule 2 is 2,2'-Anhydro-(1-beta-D-arabinofuranosyl)uracil (three-letter code: ANU) (formula: C<sub>9</sub>H<sub>10</sub>N<sub>2</sub>O<sub>5</sub>).



Mol	Chain	Residues	Atoms				ZeroOcc	AltConf
			Total	C	N	O		
2	A	1	16	9	2	5	0	0
2	B	1	16	9	2	5	0	0
2	C	1	16	9	2	5	0	0
2	D	1	16	9	2	5	0	0
2	E	1	16	9	2	5	0	0
2	F	1	16	9	2	5	0	0

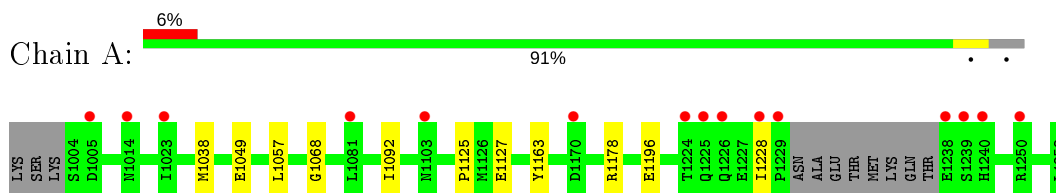
- Molecule 3 is water.

Mol	Chain	Residues	Atoms		ZeroOcc	AltConf
			Total	O		
3	A	57	57	57	0	0
3	B	48	48	48	0	0
3	C	59	59	59	0	0
3	D	82	82	82	0	0
3	E	61	61	61	0	0
3	F	67	67	67	0	0

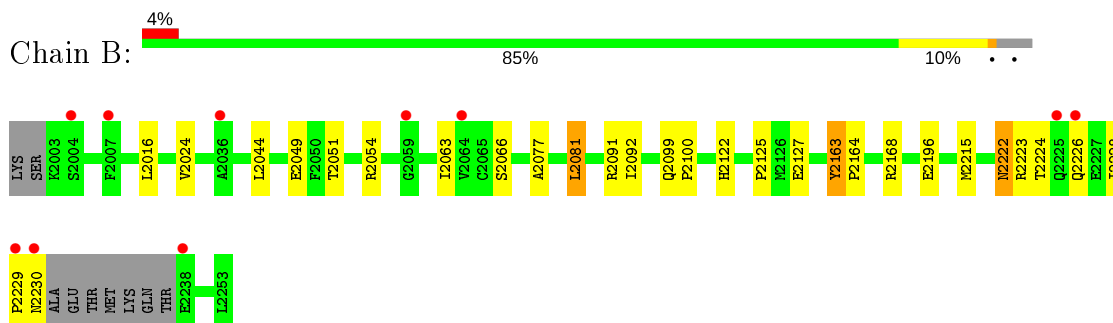
### 3 Residue-property plots [i](#)

These plots are drawn for all protein, RNA and DNA chains in the entry. The first graphic for a chain summarises the proportions of the various outlier classes displayed in the second graphic. The second graphic shows the sequence view annotated by issues in geometry and electron density. Residues are color-coded according to the number of geometric quality criteria for which they contain at least one outlier: green = 0, yellow = 1, orange = 2 and red = 3 or more. A red dot above a residue indicates a poor fit to the electron density ( $RSRZ > 2$ ). Stretches of 2 or more consecutive residues without any outlier are shown as a green connector. Residues present in the sample, but not in the model, are shown in grey.

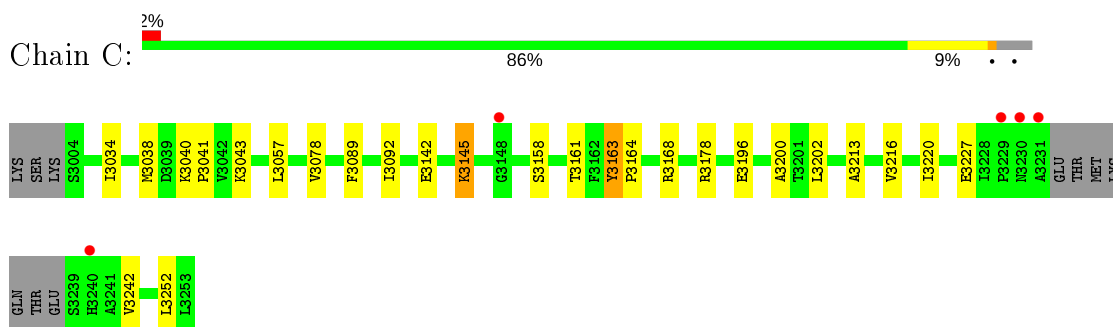
- Molecule 1: Uridine phosphorylase



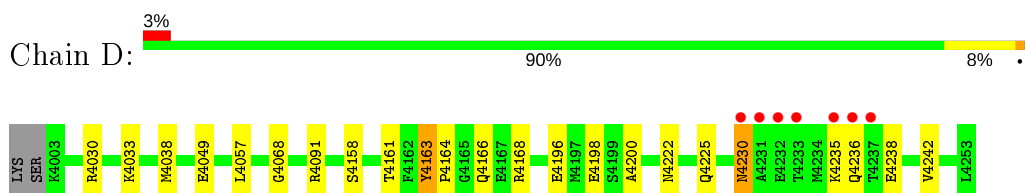
- Molecule 1: Uridine phosphorylase



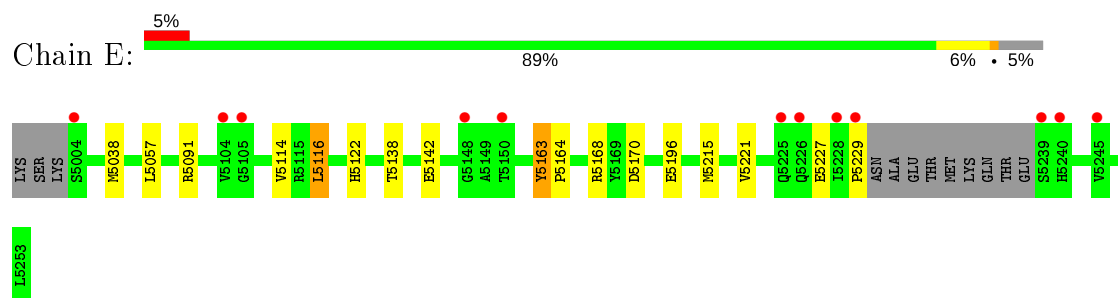
- Molecule 1: Uridine phosphorylase



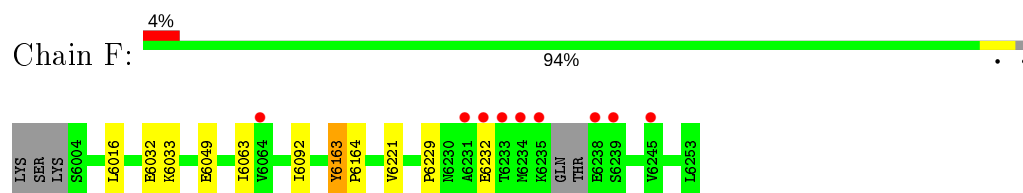
- Molecule 1: Uridine phosphorylase



- Molecule 1: Uridine phosphorylase



- Molecule 1: Uridine phosphorylase



## 4 Data and refinement statistics

Property	Value	Source
Space group	P 21 21 21	Depositor
Cell constants a, b, c, $\alpha$ , $\beta$ , $\gamma$	90.37Å 125.31Å 135.18Å 90.00° 90.00° 90.00°	Depositor
Resolution (Å)	19.94 – 2.38 19.94 – 2.38	Depositor EDS
% Data completeness (in resolution range)	98.4 (19.94-2.38) 98.4 (19.94-2.38)	Depositor EDS
$R_{merge}$	(Not available)	Depositor
$R_{sym}$	(Not available)	Depositor
$\langle I/\sigma(I) \rangle$ <sup>1</sup>	2.22 (at 2.38Å)	Xtrriage
Refinement program	REFMAC	Depositor
R, $R_{free}$	0.208 , 0.258 0.210 , 0.259	Depositor DCC
$R_{free}$ test set	1849 reflections (3.03%)	wwPDB-VP
Wilson B-factor (Å <sup>2</sup> )	22.7	Xtrriage
Anisotropy	0.126	Xtrriage
Bulk solvent $k_{sol}$ (e/Å <sup>3</sup> ), $B_{sol}$ (Å <sup>2</sup> )	0.35 , 40.9	EDS
L-test for twinning <sup>2</sup>	$\langle  L  \rangle = 0.49$ , $\langle L^2 \rangle = 0.33$	Xtrriage
Estimated twinning fraction	No twinning to report.	Xtrriage
$F_o, F_c$ correlation	0.92	EDS
Total number of atoms	11475	wwPDB-VP
Average B, all atoms (Å <sup>2</sup> )	34.0	wwPDB-VP

Xtrriage's analysis on translational NCS is as follows: *The largest off-origin peak in the Patterson function is 4.26% of the height of the origin peak. No significant pseudotranslation is detected.*

<sup>1</sup>Intensities estimated from amplitudes.

<sup>2</sup>Theoretical values of  $\langle |L| \rangle$ ,  $\langle L^2 \rangle$  for acentric reflections are 0.5, 0.333 respectively for untwinned datasets, and 0.375, 0.2 for perfectly twinned datasets.

## 5 Model quality [i](#)

### 5.1 Standard geometry [i](#)

Bond lengths and bond angles in the following residue types are not validated in this section: ANU

The Z score for a bond length (or angle) is the number of standard deviations the observed value is removed from the expected value. A bond length (or angle) with  $|Z| > 5$  is considered an outlier worth inspection. RMSZ is the root-mean-square of all Z scores of the bond lengths (or angles).

Mol	Chain	Bond lengths		Bond angles	
		RMSZ	# Z  >5	RMSZ	# Z  >5
1	A	0.37	0/1843	0.51	0/2498
1	B	0.37	0/1856	0.53	0/2516
1	C	0.37	0/1847	0.54	0/2504
1	D	0.37	0/1915	0.51	0/2595
1	E	0.37	0/1834	0.52	0/2486
1	F	0.37	0/1885	0.51	0/2554
All	All	0.37	0/11180	0.52	0/15153

There are no bond length outliers.

There are no bond angle outliers.

There are no chirality outliers.

There are no planarity outliers.

### 5.2 Too-close contacts [i](#)

In the following table, the Non-H and H(model) columns list the number of non-hydrogen atoms and hydrogen atoms in the chain respectively. The H(added) column lists the number of hydrogen atoms added and optimized by MolProbity. The Clashes column lists the number of clashes within the asymmetric unit, whereas Symm-Clashes lists symmetry related clashes.

Mol	Chain	Non-H	H(model)	H(added)	Clashes	Symm-Clashes
1	A	1814	0	1825	6	0
1	B	1827	0	1833	17	0
1	C	1818	0	1830	13	0
1	D	1885	0	1900	14	0
1	E	1805	0	1819	9	0
1	F	1856	0	1867	7	0
2	A	16	0	10	0	0

*Continued on next page...*



*Continued from previous page...*

Mol	Chain	Non-H	H(model)	H(added)	Clashes	Symm-Clashes
2	B	16	0	10	0	0
2	C	16	0	10	0	0
2	D	16	0	10	0	0
2	E	16	0	10	0	0
2	F	16	0	10	0	0
3	A	57	0	0	0	0
3	B	48	0	0	0	0
3	C	59	0	0	0	0
3	D	82	0	0	0	0
3	E	61	0	0	0	0
3	F	67	0	0	0	0
All	All	11475	0	11134	60	0

The all-atom clashscore is defined as the number of clashes found per 1000 atoms (including hydrogen atoms). The all-atom clashscore for this structure is 3.

All (60) close contacts within the same asymmetric unit are listed below, sorted by their clash magnitude.

Atom-1	Atom-2	Interatomic distance (Å)	Clash overlap (Å)
1:B:2163:TYR:HB2	1:B:2164:PRO:HD3	1.65	0.79
1:E:5163:TYR:HB2	1:E:5164:PRO:HD3	1.65	0.78
1:F:6163:TYR:HB2	1:F:6164:PRO:HD3	1.69	0.74
1:F:6221:VAL:HB	1:F:6229:PRO:HG3	1.73	0.71
1:C:3163:TYR:HB2	1:C:3164:PRO:HD3	1.71	0.70
1:B:2091:ARG:HG2	1:B:2215:MET:SD	2.34	0.67
1:F:6032:GLU:HG3	1:F:6033:LYS:HE3	1.78	0.64
1:D:4030:ARG:NH1	1:D:4033:LYS:HD3	2.16	0.61
1:E:5221:VAL:HB	1:E:5229:PRO:HG3	1.84	0.60
1:A:1049:GLU:HG3	1:F:6049:GLU:HG3	1.83	0.59
1:D:4230:ASN:H	1:D:4230:ASN:HD22	1.54	0.55
1:A:1125:PRO:HB2	1:A:1127:GLU:OE2	2.05	0.55
1:C:3040:LYS:N	1:C:3041:PRO:HD3	2.21	0.55
1:C:3034:ILE:HG12	1:C:3242:VAL:HG13	1.88	0.55
1:E:5163:TYR:CB	1:E:5164:PRO:HD3	2.36	0.55
1:B:2077:ALA:O	1:B:2081:LEU:HB2	2.08	0.54
1:E:5091:ARG:HG2	1:E:5215:MET:SD	2.48	0.54
1:E:5114:VAL:HG12	1:E:5116:LEU:HD13	1.90	0.54
1:B:2051:THR:H	1:B:2066:SER:HB3	1.75	0.51
1:A:1178:ARG:O	1:C:3178:ARG:NH2	2.43	0.51
1:C:3158:SER:HB3	1:C:3200:ALA:HB2	1.93	0.50
1:C:3078:VAL:HG21	1:C:3202:LEU:HD23	1.93	0.50

*Continued on next page...*

Continued from previous page...

Atom-1	Atom-2	Interatomic distance (Å)	Clash overlap (Å)
1:B:2125:PRO:HB2	1:B:2127:GLU:OE2	2.12	0.50
1:E:5138:THR:O	1:E:5142:GLU:HG2	2.12	0.50
1:D:4038:MET:HG2	1:D:4057:LEU:HD13	1.93	0.49
1:E:5168:ARG:NH1	1:E:5227:GLU:O	2.46	0.49
1:D:4030:ARG:HH21	1:D:4242:VAL:HG21	1.77	0.48
1:A:1049:GLU:HG3	1:F:6049:GLU:CG	2.44	0.48
1:F:6163:TYR:CB	1:F:6164:PRO:HD3	2.43	0.48
1:B:2223:ARG:HA	1:B:2226:GLN:O	2.13	0.48
1:C:3038:MET:HG2	1:C:3057:LEU:HD13	1.96	0.48
1:D:4163:TYR:HB2	1:D:4164:PRO:HD3	1.96	0.48
1:B:2163:TYR:CB	1:B:2164:PRO:HD3	2.41	0.47
1:A:1038:MET:HG2	1:A:1057:LEU:HD13	1.98	0.45
1:C:3142:GLU:O	1:C:3145:LYS:HD3	2.15	0.45
1:A:1049:GLU:HG2	1:A:1068:GLY:HA3	1.99	0.45
1:F:6016:LEU:HA	1:F:6063:ILE:HD11	1.99	0.44
1:B:2163:TYR:HA	1:B:2168:ARG:HD2	2.00	0.44
1:B:2049:GLU:HB3	1:D:4049:GLU:HB3	1.99	0.44
1:C:3161:THR:OG1	1:E:5122:HIS:HD2	2.00	0.44
1:D:4091:ARG:CZ	1:D:4198:GLU:HG3	2.48	0.44
1:B:2016:LEU:HG	1:B:2063:ILE:HD11	2.01	0.43
1:C:3089:PHE:O	1:C:3213:ALA:HA	2.19	0.43
1:B:2122:HIS:HD2	1:D:4161:THR:OG1	2.02	0.42
1:C:3163:TYR:CB	1:C:3164:PRO:HD3	2.45	0.42
1:C:3168:ARG:NH1	1:C:3227:GLU:O	2.52	0.42
1:B:2222:ASN:HD22	1:B:2224:THR:H	1.67	0.42
1:D:4238:GLU:O	1:D:4242:VAL:HG23	2.20	0.42
1:B:2044:LEU:HD11	1:B:2054:ARG:HB2	2.02	0.42
1:E:5038:MET:HG2	1:E:5057:LEU:HD13	2.01	0.41
1:C:3092:ILE:HA	1:C:3216:VAL:O	2.20	0.41
1:B:2226:GLN:NE2	1:B:2228:ILE:O	2.52	0.41
1:D:4158:SER:HB3	1:D:4200:ALA:HB2	2.02	0.41
1:D:4222:ASN:HB3	1:D:4225:GLN:HG2	2.02	0.41
1:D:4163:TYR:HB2	1:D:4164:PRO:CD	2.51	0.41
1:B:2228:ILE:HA	1:B:2229:PRO:HD3	1.89	0.41
1:B:2099:GLN:HA	1:B:2100:PRO:HD3	1.91	0.41
1:D:4166:GLN:OE1	1:D:4168:ARG:NH1	2.55	0.40
1:B:2024:VAL:O	1:B:2091:ARG:HD2	2.22	0.40
1:D:4049:GLU:HG3	1:D:4068:GLY:HA3	2.03	0.40

There are no symmetry-related clashes.

## 5.3 Torsion angles [i](#)

### 5.3.1 Protein backbone [i](#)

In the following table, the Percentiles column shows the percent Ramachandran outliers of the chain as a percentile score with respect to all X-ray entries followed by that with respect to entries of similar resolution.

The Analysed column shows the number of residues for which the backbone conformation was analysed, and the total number of residues.

Mol	Chain	Analysed	Favoured	Allowed	Outliers	Percentiles	
1	A	238/253 (94%)	234 (98%)	3 (1%)	1 (0%)	34	46
1	B	240/253 (95%)	235 (98%)	4 (2%)	1 (0%)	34	46
1	C	239/253 (94%)	234 (98%)	4 (2%)	1 (0%)	34	46
1	D	249/253 (98%)	246 (99%)	2 (1%)	1 (0%)	34	46
1	E	237/253 (94%)	231 (98%)	5 (2%)	1 (0%)	34	46
1	F	244/253 (96%)	238 (98%)	5 (2%)	1 (0%)	34	46
All	All	1447/1518 (95%)	1418 (98%)	23 (2%)	6 (0%)	34	46

All (6) Ramachandran outliers are listed below:

Mol	Chain	Res	Type
1	D	4163	TYR
1	A	1163	TYR
1	C	3163	TYR
1	B	2163	TYR
1	E	5163	TYR
1	F	6163	TYR

### 5.3.2 Protein sidechains [i](#)

In the following table, the Percentiles column shows the percent sidechain outliers of the chain as a percentile score with respect to all X-ray entries followed by that with respect to entries of similar resolution.

The Analysed column shows the number of residues for which the sidechain conformation was analysed, and the total number of residues.

Mol	Chain	Analysed	Rotameric	Outliers	Percentiles	
1	A	192/202 (95%)	189 (98%)	3 (2%)	62	78
1	B	193/202 (96%)	188 (97%)	5 (3%)	46	64

*Continued on next page...*

*Continued from previous page...*

Mol	Chain	Analysed	Rotameric	Outliers	Percentiles	
1	C	192/202 (95%)	187 (97%)	5 (3%)	46	64
1	D	200/202 (99%)	196 (98%)	4 (2%)	55	72
1	E	191/202 (95%)	188 (98%)	3 (2%)	62	78
1	F	196/202 (97%)	194 (99%)	2 (1%)	76	87
All	All	1164/1212 (96%)	1142 (98%)	22 (2%)	57	73

All (22) residues with a non-rotameric sidechain are listed below:

Mol	Chain	Res	Type
1	A	1092	ILE
1	A	1196	GLU
1	A	1228	ILE
1	B	2081	LEU
1	B	2092	ILE
1	B	2196	GLU
1	B	2222	ASN
1	B	2230	ASN
1	C	3043	LYS
1	C	3145	LYS
1	C	3196	GLU
1	C	3220	ILE
1	C	3252	LEU
1	D	4196	GLU
1	D	4230	ASN
1	D	4235	LYS
1	D	4236	GLN
1	E	5116	LEU
1	E	5170	ASP
1	E	5196	GLU
1	F	6092	ILE
1	F	6232	GLU

Some sidechains can be flipped to improve hydrogen bonding and reduce clashes. All (23) such sidechains are listed below:

Mol	Chain	Res	Type
1	A	1083	GLN
1	A	1209	GLN
1	A	1226	GLN
1	B	2122	HIS
1	B	2209	GLN

*Continued on next page...*

*Continued from previous page...*

Mol	Chain	Res	Type
1	B	2222	ASN
1	B	2230	ASN
1	C	3047	HIS
1	C	3122	HIS
1	C	3209	GLN
1	C	3226	GLN
1	D	4047	HIS
1	D	4083	GLN
1	D	4122	HIS
1	D	4209	GLN
1	D	4230	ASN
1	D	4236	GLN
1	E	5122	HIS
1	E	5166	GLN
1	E	5209	GLN
1	F	6083	GLN
1	F	6209	GLN
1	F	6226	GLN

### 5.3.3 RNA [i](#)

There are no RNA molecules in this entry.

## 5.4 Non-standard residues in protein, DNA, RNA chains [i](#)

There are no non-standard protein/DNA/RNA residues in this entry.

## 5.5 Carbohydrates [i](#)

There are no carbohydrates in this entry.

## 5.6 Ligand geometry [i](#)

6 ligands are modelled in this entry.

In the following table, the Counts columns list the number of bonds (or angles) for which Mogul statistics could be retrieved, the number of bonds (or angles) that are observed in the model and the number of bonds (or angles) that are defined in the Chemical Component Dictionary. The Link column lists molecule types, if any, to which the group is linked. The Z score for a bond length (or angle) is the number of standard deviations the observed value is removed from the

expected value. A bond length (or angle) with  $|Z| > 2$  is considered an outlier worth inspection. RMSZ is the root-mean-square of all Z scores of the bond lengths (or angles).

Mol	Type	Chain	Res	Link	Bond lengths			Bond angles		
					Counts	RMSZ	# $ Z  > 2$	Counts	RMSZ	# $ Z  > 2$
2	ANU	F	1516	-	16,18,18	2.53	4 (25%)	13,27,27	1.21	1 (7%)
2	ANU	E	1516	-	16,18,18	2.44	3 (18%)	13,27,27	1.26	2 (15%)
2	ANU	B	1516	-	16,18,18	2.39	3 (18%)	13,27,27	1.31	2 (15%)
2	ANU	A	1516	-	16,18,18	2.43	3 (18%)	13,27,27	1.27	2 (15%)
2	ANU	C	1516	-	16,18,18	2.49	4 (25%)	13,27,27	1.29	2 (15%)
2	ANU	D	1516	-	16,18,18	2.47	3 (18%)	13,27,27	1.21	2 (15%)

In the following table, the Chirals column lists the number of chiral outliers, the number of chiral centers analysed, the number of these observed in the model and the number defined in the Chemical Component Dictionary. Similar counts are reported in the Torsion and Rings columns. '-' means no outliers of that kind were identified.

Mol	Type	Chain	Res	Link	Chirals	Torsions	Rings
2	ANU	F	1516	-	-	1/2/26/26	0/3/3/3
2	ANU	E	1516	-	-	1/2/26/26	0/3/3/3
2	ANU	B	1516	-	-	2/2/26/26	0/3/3/3
2	ANU	A	1516	-	-	0/2/26/26	0/3/3/3
2	ANU	C	1516	-	-	0/2/26/26	0/3/3/3
2	ANU	D	1516	-	-	2/2/26/26	0/3/3/3

All (20) bond length outliers are listed below:

Mol	Chain	Res	Type	Atoms	Z	Observed(Å)	Ideal(Å)
2	F	1516	ANU	C2-N3	8.20	1.47	1.32
2	D	1516	ANU	C2-N3	8.18	1.47	1.32
2	C	1516	ANU	C2-N3	8.10	1.47	1.32
2	E	1516	ANU	C2-N3	8.08	1.47	1.32
2	A	1516	ANU	C2-N3	8.03	1.47	1.32
2	B	1516	ANU	C2-N3	7.94	1.47	1.32
2	F	1516	ANU	C2-N1	3.57	1.45	1.36
2	C	1516	ANU	C2-N1	3.55	1.45	1.36
2	E	1516	ANU	C2-N1	3.54	1.45	1.36
2	A	1516	ANU	C2-N1	3.44	1.45	1.36
2	D	1516	ANU	C2-N1	3.44	1.45	1.36
2	B	1516	ANU	C2-N1	3.28	1.44	1.36
2	F	1516	ANU	C1'-N1	-2.54	1.45	1.49
2	C	1516	ANU	C1'-N1	-2.53	1.45	1.49
2	E	1516	ANU	C1'-N1	-2.47	1.45	1.49

*Continued on next page...*

Continued from previous page...

Mol	Chain	Res	Type	Atoms	Z	Observed(Å)	Ideal(Å)
2	D	1516	ANU	C1'-N1	-2.42	1.45	1.49
2	B	1516	ANU	C1'-N1	-2.39	1.45	1.49
2	F	1516	ANU	O4'-C1'	2.31	1.44	1.41
2	A	1516	ANU	C1'-N1	-2.27	1.45	1.49
2	C	1516	ANU	O4'-C1'	2.25	1.44	1.41

All (11) bond angle outliers are listed below:

Mol	Chain	Res	Type	Atoms	Z	Observed(°)	Ideal(°)
2	C	1516	ANU	O2-C2'-C1'	2.65	108.66	105.47
2	E	1516	ANU	O2-C2'-C1'	2.57	108.56	105.47
2	F	1516	ANU	O2-C2'-C1'	2.51	108.49	105.47
2	A	1516	ANU	O2-C2'-C1'	2.42	108.38	105.47
2	B	1516	ANU	O2-C2'-C1'	2.38	108.33	105.47
2	C	1516	ANU	C5'-C4'-C3'	-2.32	109.50	115.09
2	D	1516	ANU	C5'-C4'-C3'	-2.17	109.85	115.09
2	D	1516	ANU	O2-C2'-C1'	2.15	108.06	105.47
2	A	1516	ANU	C3'-C2'-C1'	2.14	106.92	102.89
2	B	1516	ANU	C5'-C4'-C3'	-2.14	109.93	115.09
2	E	1516	ANU	C5'-C4'-C3'	-2.04	110.16	115.09

There are no chirality outliers.

All (6) torsion outliers are listed below:

Mol	Chain	Res	Type	Atoms
2	B	1516	ANU	C3'-C4'-C5'-O5'
2	B	1516	ANU	O4'-C4'-C5'-O5'
2	D	1516	ANU	C3'-C4'-C5'-O5'
2	D	1516	ANU	O4'-C4'-C5'-O5'
2	E	1516	ANU	O4'-C4'-C5'-O5'
2	F	1516	ANU	O4'-C4'-C5'-O5'

There are no ring outliers.

No monomer is involved in short contacts.

## 5.7 Other polymers

There are no such residues in this entry.

## 5.8 Polymer linkage issues

There are no chain breaks in this entry.



## 6 Fit of model and data

### 6.1 Protein, DNA and RNA chains

In the following table, the column labelled '#RSRZ > 2' contains the number (and percentage) of RSRZ outliers, followed by percent RSRZ outliers for the chain as percentile scores relative to all X-ray entries and entries of similar resolution. The OWAB column contains the minimum, median, 95<sup>th</sup> percentile and maximum values of the occupancy-weighted average B-factor per residue. The column labelled 'Q < 0.9' lists the number of (and percentage) of residues with an average occupancy less than 0.9.

Mol	Chain	Analysed	<RSRZ>	#RSRZ > 2	OWAB(Å <sup>2</sup> )	Q < 0.9
1	A	242/253 (95%)	0.24	15 (6%) 20 22	27, 36, 49, 60	0
1	B	244/253 (96%)	0.10	10 (4%) 37 40	24, 34, 48, 58	0
1	C	243/253 (96%)	0.04	5 (2%) 63 65	24, 31, 42, 56	0
1	D	251/253 (99%)	0.08	7 (2%) 53 55	24, 31, 53, 64	0
1	E	241/253 (95%)	0.19	12 (4%) 28 31	25, 34, 45, 55	0
1	F	248/253 (98%)	0.17	9 (3%) 42 46	24, 32, 47, 63	0
All	All	1469/1518 (96%)	0.14	58 (3%) 39 42	24, 33, 48, 64	0

All (58) RSRZ outliers are listed below:

Mol	Chain	Res	Type	RSRZ
1	F	6233	THR	8.5
1	A	1238	GLU	7.2
1	C	3231	ALA	7.2
1	F	6234	MET	6.6
1	F	6235	LYS	6.1
1	A	1239	SER	6.0
1	F	6231	ALA	5.5
1	D	4231	ALA	4.9
1	F	6232	GLU	4.9
1	D	4235	LYS	4.9
1	C	3230	ASN	4.7
1	D	4232	GLU	4.5
1	D	4230	ASN	4.2
1	A	1228	ILE	4.1
1	D	4236	GLN	4.0
1	E	5225	GLN	4.0
1	D	4233	THR	3.8
1	A	1229	PRO	3.7
1	F	6239	SER	3.6

*Continued on next page...*

*Continued from previous page...*

<b>Mol</b>	<b>Chain</b>	<b>Res</b>	<b>Type</b>	<b>RSRZ</b>
1	C	3148	GLY	3.6
1	B	2004	SER	3.5
1	E	5104	VAL	3.5
1	E	5226	GLN	3.5
1	B	2238	GLU	3.3
1	F	6238	GLU	3.2
1	F	6064	VAL	3.2
1	A	1225	GLN	3.1
1	E	5239	SER	3.1
1	B	2230	ASN	3.0
1	E	5004	SER	3.0
1	E	5150	THR	2.9
1	E	5245	VAL	2.9
1	A	1005	ASP	2.9
1	E	5105	GLY	2.7
1	D	4237	THR	2.7
1	C	3240	HIS	2.6
1	A	1224	THR	2.6
1	F	6245	VAL	2.4
1	C	3229	PRO	2.4
1	A	1250	ARG	2.4
1	E	5240	HIS	2.3
1	B	2007	PHE	2.3
1	B	2064	VAL	2.3
1	B	2059	GLY	2.3
1	B	2226	GLN	2.2
1	A	1226	GLN	2.2
1	A	1014	ASN	2.2
1	A	1240	HIS	2.2
1	B	2036	ALA	2.1
1	E	5229	PRO	2.1
1	B	2229	PRO	2.1
1	A	1081	LEU	2.1
1	A	1103	ASN	2.1
1	A	1170	ASP	2.1
1	B	2225	GLN	2.1
1	E	5148	GLY	2.1
1	A	1023	ILE	2.1
1	E	5228	ILE	2.0

## 6.2 Non-standard residues in protein, DNA, RNA chains [i](#)

There are no non-standard protein/DNA/RNA residues in this entry.

## 6.3 Carbohydrates [i](#)

There are no carbohydrates in this entry.

## 6.4 Ligands [i](#)

In the following table, the Atoms column lists the number of modelled atoms in the group and the number defined in the chemical component dictionary. The B-factors column lists the minimum, median, 95<sup>th</sup> percentile and maximum values of B factors of atoms in the group. The column labelled 'Q< 0.9' lists the number of atoms with occupancy less than 0.9.

Mol	Type	Chain	Res	Atoms	RSCC	RSR	B-factors( $\text{\AA}^2$ )	Q<0.9
2	ANU	E	1516	16/16	0.83	0.16	41,42,42,43	0
2	ANU	D	1516	16/16	0.87	0.14	41,42,42,42	0
2	ANU	C	1516	16/16	0.88	0.18	37,37,38,38	0
2	ANU	A	1516	16/16	0.91	0.14	32,33,33,33	0
2	ANU	F	1516	16/16	0.92	0.16	32,33,34,34	0
2	ANU	B	1516	16/16	0.94	0.11	36,36,37,37	0

## 6.5 Other polymers [i](#)

There are no such residues in this entry.