



Full wwPDB X-ray Structure Validation Report ⓘ

Nov 20, 2023 – 01:21 AM JST

PDB ID : 7CD9
Title : Crystal Structure of SETDB1 tudor domain in complexed with Compound 6
Authors : Xiong, L.; Guo, Y.; Mao, X.; Huang, L.; Wu, C.; Yang, S.
Deposited on : 2020-06-19
Resolution : 1.60 Å(reported)

This is a Full wwPDB X-ray Structure Validation Report for a publicly released PDB entry.

We welcome your comments at validation@mail.wwpdb.org

A user guide is available at

<https://www.wwpdb.org/validation/2017/XrayValidationReportHelp>

with specific help available everywhere you see the ⓘ symbol.

The types of validation reports are described at

<http://www.wwpdb.org/validation/2017/FAQs#types>.

The following versions of software and data (see [references ⓘ](#)) were used in the production of this report:

MolProbity : 4.02b-467
Mogul : 1.8.5 (274361), CSD as541be (2020)
Xtriage (Phenix) : 1.13
EDS : 2.36
buster-report : 1.1.7 (2018)
Percentile statistics : 20191225.v01 (using entries in the PDB archive December 25th 2019)
Refmac : 5.8.0158
CCP4 : 7.0.044 (Gargrove)
Ideal geometry (proteins) : Engh & Huber (2001)
Ideal geometry (DNA, RNA) : Parkinson et al. (1996)
Validation Pipeline (wwPDB-VP) : 2.36

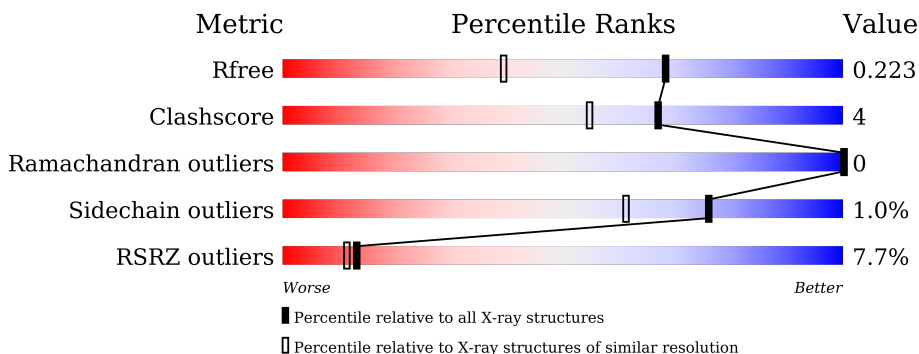
1 Overall quality at a glance

The following experimental techniques were used to determine the structure:

X-RAY DIFFRACTION

The reported resolution of this entry is 1.60 Å.

Percentile scores (ranging between 0-100) for global validation metrics of the entry are shown in the following graphic. The table shows the number of entries on which the scores are based.



Metric	Whole archive (#Entries)	Similar resolution (#Entries, resolution range(Å))
R_{free}	130704	3398 (1.60-1.60)
Clashscore	141614	3665 (1.60-1.60)
Ramachandran outliers	138981	3564 (1.60-1.60)
Sidechain outliers	138945	3563 (1.60-1.60)
RSRZ outliers	127900	3321 (1.60-1.60)

The table below summarises the geometric issues observed across the polymeric chains and their fit to the electron density. The red, orange, yellow and green segments of the lower bar indicate the fraction of residues that contain outliers for ≥ 3 , 2, 1 and 0 types of geometric quality criteria respectively. A grey segment represents the fraction of residues that are not modelled. The numeric value for each fraction is indicated below the corresponding segment, with a dot representing fractions $\leq 5\%$. The upper red bar (where present) indicates the fraction of residues that have poor fit to the electron density. The numeric value is given above the bar.

Mol	Chain	Length	Quality of chain
1	A	240	
1	B	240	

2 Entry composition i

There are 4 unique types of molecules in this entry. The entry contains 7634 atoms, of which 3621 are hydrogens and 0 are deuteriums.

In the tables below, the ZeroOcc column contains the number of atoms modelled with zero occupancy, the AltConf column contains the number of residues with at least one atom in alternate conformation and the Trace column contains the number of residues modelled with at most 2 atoms.

- Molecule 1 is a protein called Histone-lysine N-methyltransferase SETDB1.

Mol	Chain	Residues	Atoms						ZeroOcc	AltConf	Trace
			Total	C	H	N	O	S			
1	A	215	3539	1137	1779	297	319	7	0	4	0
1	B	215	3531	1135	1774	297	318	7	0	3	0

There are 38 discrepancies between the modelled and reference sequences:

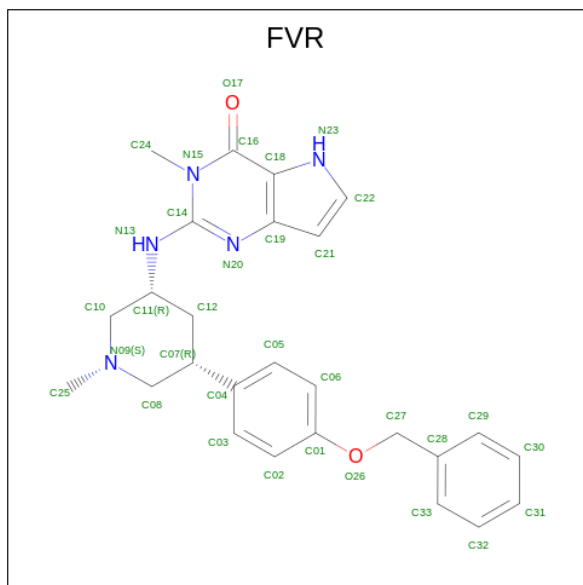
Chain	Residue	Modelled	Actual	Comment	Reference
A	171	GLY	-	expression tag	UNP Q15047
A	172	SER	-	expression tag	UNP Q15047
A	173	SER	-	expression tag	UNP Q15047
A	174	HIS	-	expression tag	UNP Q15047
A	175	HIS	-	expression tag	UNP Q15047
A	176	HIS	-	expression tag	UNP Q15047
A	177	HIS	-	expression tag	UNP Q15047
A	178	HIS	-	expression tag	UNP Q15047
A	179	HIS	-	expression tag	UNP Q15047
A	180	SER	-	expression tag	UNP Q15047
A	181	SER	-	expression tag	UNP Q15047
A	182	GLY	-	expression tag	UNP Q15047
A	183	GLU	-	expression tag	UNP Q15047
A	184	ASN	-	expression tag	UNP Q15047
A	185	LEU	-	expression tag	UNP Q15047
A	186	TYR	-	expression tag	UNP Q15047
A	187	PHE	-	expression tag	UNP Q15047
A	188	GLN	-	expression tag	UNP Q15047
A	189	GLY	-	expression tag	UNP Q15047
B	171	GLY	-	expression tag	UNP Q15047
B	172	SER	-	expression tag	UNP Q15047
B	173	SER	-	expression tag	UNP Q15047
B	174	HIS	-	expression tag	UNP Q15047
B	175	HIS	-	expression tag	UNP Q15047
B	176	HIS	-	expression tag	UNP Q15047

Continued on next page...

Continued from previous page...

Chain	Residue	Modelled	Actual	Comment	Reference
B	177	HIS	-	expression tag	UNP Q15047
B	178	HIS	-	expression tag	UNP Q15047
B	179	HIS	-	expression tag	UNP Q15047
B	180	SER	-	expression tag	UNP Q15047
B	181	SER	-	expression tag	UNP Q15047
B	182	GLY	-	expression tag	UNP Q15047
B	183	GLU	-	expression tag	UNP Q15047
B	184	ASN	-	expression tag	UNP Q15047
B	185	LEU	-	expression tag	UNP Q15047
B	186	TYR	-	expression tag	UNP Q15047
B	187	PHE	-	expression tag	UNP Q15047
B	188	GLN	-	expression tag	UNP Q15047
B	189	GLY	-	expression tag	UNP Q15047

- Molecule 2 is 3-methyl-2-[[[(3R,5R)-1-methyl-5-(4-phenylmethoxyphenyl)piperidin-3-yl]amino]-5H-pyrrolo[3,2-d]pyrimidin-4-one (three-letter code: FVR) (formula: C₂₆H₂₉N₅O₂) (labeled as "Ligand of Interest" by depositor).



Mol	Chain	Residues	Atoms				ZeroOcc	AltConf	
			Total	C	H	N			O
2	A	1	Total	C	H	N	O	0	0
			62	26	29	5	2		
2	B	1	Total	C	H	N	O	0	0
			62	26	29	5	2		

- Molecule 3 is CITRIC ACID (three-letter code: CIT) (formula: C₆H₈O₇) (labeled as "Ligand of Interest" by depositor).



Mol	Chain	Residues	Atoms			ZeroOcc	AltConf	
			Total	C	H			O
3	A	1	18	6	5	7	0	0
3	B	1	18	6	5	7	0	0

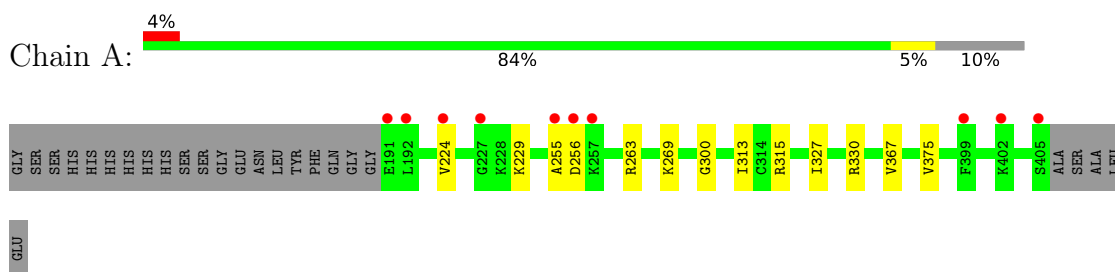
- Molecule 4 is water.

Mol	Chain	Residues	Atoms		ZeroOcc	AltConf
			Total	O		
4	A	214	214	214	0	0
4	B	190	190	190	0	0

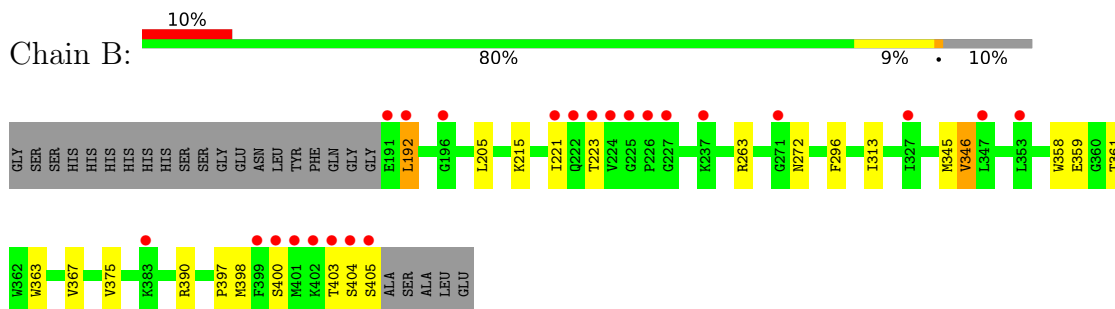
3 Residue-property plots [i](#)

These plots are drawn for all protein, RNA, DNA and oligosaccharide chains in the entry. The first graphic for a chain summarises the proportions of the various outlier classes displayed in the second graphic. The second graphic shows the sequence view annotated by issues in geometry and electron density. Residues are color-coded according to the number of geometric quality criteria for which they contain at least one outlier: green = 0, yellow = 1, orange = 2 and red = 3 or more. A red dot above a residue indicates a poor fit to the electron density ($RSRZ > 2$). Stretches of 2 or more consecutive residues without any outlier are shown as a green connector. Residues present in the sample, but not in the model, are shown in grey.

- Molecule 1: Histone-lysine N-methyltransferase SETDB1



- Molecule 1: Histone-lysine N-methyltransferase SETDB1



4 Data and refinement statistics i

Property	Value	Source
Space group	P 1 21 1	Depositor
Cell constants a, b, c, α , β , γ	56.79Å 74.94Å 59.33Å 90.00° 90.73° 90.00°	Depositor
Resolution (Å)	29.66 – 1.60 29.66 – 1.60	Depositor EDS
% Data completeness (in resolution range)	98.6 (29.66-1.60) 98.6 (29.66-1.60)	Depositor EDS
R_{merge}	(Not available)	Depositor
R_{sym}	(Not available)	Depositor
$\langle I/\sigma(I) \rangle$ ¹	6.23 (at 1.60Å)	Xtrriage
Refinement program	PHENIX 1.12_2829	Depositor
R, R_{free}	0.192 , 0.223 0.192 , 0.223	Depositor DCC
R_{free} test set	3233 reflections (5.00%)	wwPDB-VP
Wilson B-factor (Å ²)	12.5	Xtrriage
Anisotropy	0.092	Xtrriage
Bulk solvent k_{sol} (e/Å ³), B_{sol} (Å ²)	0.42 , 47.0	EDS
L-test for twinning ²	$\langle L \rangle = 0.49$, $\langle L^2 \rangle = 0.33$	Xtrriage
Estimated twinning fraction	0.001 for l,k,-h 0.022 for h,-k,-l 0.018 for l,-k,h	Xtrriage
F_o, F_c correlation	0.95	EDS
Total number of atoms	7634	wwPDB-VP
Average B, all atoms (Å ²)	21.0	wwPDB-VP

Xtrriage's analysis on translational NCS is as follows: *The largest off-origin peak in the Patterson function is 5.87% of the height of the origin peak. No significant pseudotranslation is detected.*

¹Intensities estimated from amplitudes.

²Theoretical values of $\langle |L| \rangle$, $\langle L^2 \rangle$ for acentric reflections are 0.5, 0.333 respectively for untwinned datasets, and 0.375, 0.2 for perfectly twinned datasets.

5 Model quality

5.1 Standard geometry

Bond lengths and bond angles in the following residue types are not validated in this section: FVR, CIT

The Z score for a bond length (or angle) is the number of standard deviations the observed value is removed from the expected value. A bond length (or angle) with $|Z| > 5$ is considered an outlier worth inspection. RMSZ is the root-mean-square of all Z scores of the bond lengths (or angles).

Mol	Chain	Bond lengths		Bond angles	
		RMSZ	# Z >5	RMSZ	# Z >5
1	A	0.56	0/1807	0.69	0/2440
1	B	0.50	0/1801	0.65	0/2432
All	All	0.53	0/3608	0.67	0/4872

There are no bond length outliers.

There are no bond angle outliers.

There are no chirality outliers.

There are no planarity outliers.

5.2 Too-close contacts

In the following table, the Non-H and H(model) columns list the number of non-hydrogen atoms and hydrogen atoms in the chain respectively. The H(added) column lists the number of hydrogen atoms added and optimized by MolProbity. The Clashes column lists the number of clashes within the asymmetric unit, whereas Symm-Clashes lists symmetry-related clashes.

Mol	Chain	Non-H	H(model)	H(added)	Clashes	Symm-Clashes
1	A	1760	1779	1766	8	0
1	B	1757	1774	1761	20	0
2	A	33	29	0	0	0
2	B	33	29	0	0	0
3	A	13	5	5	1	0
3	B	13	5	5	1	0
4	A	214	0	0	1	0
4	B	190	0	0	1	0
All	All	4013	3621	3537	28	0

The all-atom clashscore is defined as the number of clashes found per 1000 atoms (including hydrogen atoms). The all-atom clashscore for this structure is 4.

All (28) close contacts within the same asymmetric unit are listed below, sorted by their clash magnitude.

Atom-1	Atom-2	Interatomic distance (Å)	Clash overlap (Å)
1:B:346:VAL:HG13	1:B:398:MET:HE2	1.70	0.73
1:B:400:SER:HA	1:B:403:THR:HG22	1.73	0.70
1:B:345:MET:C	1:B:398:MET:HE1	2.19	0.62
1:B:205:LEU:HD23	1:B:215:LYS:HG2	1.82	0.62
1:B:205:LEU:CD2	1:B:215:LYS:HG2	2.30	0.61
1:B:192:LEU:O	1:B:221:ILE:HB	2.02	0.59
1:B:346:VAL:HG13	1:B:398:MET:CE	2.32	0.59
1:B:296:PHE:CG	3:B:502:CIT:H22	2.42	0.54
1:A:315:ARG:NH2	4:A:604:HOH:O	2.40	0.54
1:A:300:GLY:O	3:A:502:CIT:O6	2.26	0.53
1:A:255[A]:ALA:O	1:A:256[A]:ASP:HB2	2.09	0.52
1:B:361:THR:HG23	1:B:363:TRP:NE1	2.24	0.52
1:A:367:VAL:HG13	1:A:375:VAL:HG23	1.93	0.50
1:B:192:LEU:CD1	1:B:223:THR:HB	2.42	0.50
1:B:367:VAL:HG13	1:B:375:VAL:CG2	2.40	0.50
1:B:192:LEU:HD11	1:B:223:THR:HB	1.94	0.49
1:B:400:SER:O	1:B:404:SER:N	2.46	0.49
1:A:224:VAL:HG21	1:A:229:LYS:HG3	1.96	0.48
1:B:346:VAL:N	1:B:398:MET:CE	2.79	0.46
1:A:263:ARG:HG3	1:A:313:ILE:HD12	1.98	0.46
1:A:327:ILE:HD12	1:A:330:ARG:NH1	2.30	0.46
1:B:272:ASN:HB2	4:B:749:HOH:O	2.16	0.45
1:B:346:VAL:HG11	1:B:397:PRO:HB2	1.99	0.44
1:A:367:VAL:HG13	1:A:375:VAL:CG2	2.46	0.44
1:B:263:ARG:HG3	1:B:313:ILE:HD12	2.01	0.43
1:B:205:LEU:HD21	1:B:215:LYS:HG2	2.00	0.42
1:B:358:TRP:CD1	1:B:359:GLU:HG3	2.55	0.42
1:B:390:ARG:O	1:B:398:MET:HE3	2.20	0.41

There are no symmetry-related clashes.

5.3 Torsion angles [i](#)

5.3.1 Protein backbone [i](#)

In the following table, the Percentiles column shows the percent Ramachandran outliers of the chain as a percentile score with respect to all X-ray entries followed by that with respect to entries of similar resolution.

The Analysed column shows the number of residues for which the backbone conformation was analysed, and the total number of residues.

Mol	Chain	Analysed	Favoured	Allowed	Outliers	Percentiles	
1	A	214/240 (89%)	210 (98%)	4 (2%)	0	100	100
1	B	213/240 (89%)	206 (97%)	7 (3%)	0	100	100
All	All	427/480 (89%)	416 (97%)	11 (3%)	0	100	100

There are no Ramachandran outliers to report.

5.3.2 Protein sidechains [i](#)

In the following table, the Percentiles column shows the percent sidechain outliers of the chain as a percentile score with respect to all X-ray entries followed by that with respect to entries of similar resolution.

The Analysed column shows the number of residues for which the sidechain conformation was analysed, and the total number of residues.

Mol	Chain	Analysed	Rotameric	Outliers	Percentiles	
1	A	193/211 (92%)	192 (100%)	1 (0%)	88	80
1	B	192/211 (91%)	189 (98%)	3 (2%)	62	41
All	All	385/422 (91%)	381 (99%)	4 (1%)	76	61

All (4) residues with a non-rotameric sidechain are listed below:

Mol	Chain	Res	Type
1	A	269	LYS
1	B	192	LEU
1	B	346	VAL
1	B	405	SER

Sometimes sidechains can be flipped to improve hydrogen bonding and reduce clashes. There are no such sidechains identified.

5.3.3 RNA [i](#)

There are no RNA molecules in this entry.

5.4 Non-standard residues in protein, DNA, RNA chains [i](#)

There are no non-standard protein/DNA/RNA residues in this entry.

5.5 Carbohydrates [i](#)

There are no monosaccharides in this entry.

5.6 Ligand geometry [i](#)

4 ligands are modelled in this entry.

In the following table, the Counts columns list the number of bonds (or angles) for which Mogul statistics could be retrieved, the number of bonds (or angles) that are observed in the model and the number of bonds (or angles) that are defined in the Chemical Component Dictionary. The Link column lists molecule types, if any, to which the group is linked. The Z score for a bond length (or angle) is the number of standard deviations the observed value is removed from the expected value. A bond length (or angle) with $|Z| > 2$ is considered an outlier worth inspection. RMSZ is the root-mean-square of all Z scores of the bond lengths (or angles).

Mol	Type	Chain	Res	Link	Bond lengths			Bond angles		
					Counts	RMSZ	# Z > 2	Counts	RMSZ	# Z > 2
2	FVR	B	501	-	35,37,37	2.88	20 (57%)	42,52,52	1.45	7 (16%)
3	CIT	B	502	-	12,12,12	1.48	3 (25%)	17,17,17	1.93	4 (23%)
3	CIT	A	502	-	12,12,12	1.45	1 (8%)	17,17,17	2.22	8 (47%)
2	FVR	A	501	-	35,37,37	2.35	12 (34%)	42,52,52	1.32	4 (9%)

In the following table, the Chirals column lists the number of chiral outliers, the number of chiral centers analysed, the number of these observed in the model and the number defined in the Chemical Component Dictionary. Similar counts are reported in the Torsion and Rings columns. '-' means no outliers of that kind were identified.

Mol	Type	Chain	Res	Link	Chirals	Torsions	Rings
2	FVR	B	501	-	-	0/13/25/25	0/5/5/5
3	CIT	B	502	-	-	3/16/16/16	-
3	CIT	A	502	-	-	6/16/16/16	-
2	FVR	A	501	-	-	0/13/25/25	0/5/5/5

All (36) bond length outliers are listed below:

Mol	Chain	Res	Type	Atoms	Z	Observed(Å)	Ideal(Å)
2	B	501	FVR	C25-N09	-9.73	1.24	1.46

Continued on next page...

Continued from previous page...

Mol	Chain	Res	Type	Atoms	Z	Observed(Å)	Ideal(Å)
2	A	501	FVR	C25-N09	-7.82	1.28	1.46
2	B	501	FVR	C14-N15	-5.72	1.33	1.38
2	A	501	FVR	C12-C07	-4.39	1.47	1.53
2	A	501	FVR	C12-C11	-4.22	1.46	1.52
2	A	501	FVR	C14-N15	-4.07	1.35	1.38
2	A	501	FVR	C14-N13	3.92	1.43	1.35
2	B	501	FVR	C14-N13	3.50	1.42	1.35
2	B	501	FVR	C12-C11	-3.18	1.47	1.52
2	B	501	FVR	C12-C07	-3.13	1.49	1.53
2	B	501	FVR	C27-C28	3.13	1.58	1.50
2	B	501	FVR	C10-C11	3.08	1.57	1.51
2	B	501	FVR	C04-C07	3.00	1.58	1.52
2	B	501	FVR	C03-C04	-3.00	1.34	1.39
2	A	501	FVR	C16-N15	-2.90	1.34	1.39
2	B	501	FVR	C06-C01	-2.84	1.32	1.38
3	A	502	CIT	C4-C3	-2.84	1.50	1.53
2	B	501	FVR	C10-N09	-2.82	1.42	1.46
2	B	501	FVR	C18-C16	-2.77	1.39	1.47
2	B	501	FVR	C05-C04	-2.74	1.34	1.39
2	B	501	FVR	C21-C22	2.73	1.41	1.38
2	A	501	FVR	C11-N13	2.66	1.52	1.46
2	A	501	FVR	C04-C07	2.64	1.57	1.52
2	B	501	FVR	C08-N09	-2.53	1.42	1.46
2	A	501	FVR	C18-C16	-2.52	1.39	1.47
3	B	502	CIT	C3-C6	-2.50	1.50	1.53
2	A	501	FVR	C10-C11	2.49	1.56	1.51
2	B	501	FVR	O17-C16	-2.47	1.17	1.22
3	B	502	CIT	C4-C3	-2.46	1.50	1.53
2	B	501	FVR	C16-N15	-2.45	1.34	1.39
2	B	501	FVR	C08-C07	2.38	1.56	1.53
3	B	502	CIT	C2-C3	-2.29	1.51	1.53
2	A	501	FVR	O26-C01	2.17	1.42	1.37
2	B	501	FVR	C18-C19	-2.17	1.36	1.41
2	A	501	FVR	C19-N20	-2.10	1.35	1.39
2	B	501	FVR	C14-N20	-2.07	1.28	1.30

All (23) bond angle outliers are listed below:

Mol	Chain	Res	Type	Atoms	Z	Observed(°)	Ideal(°)
3	A	502	CIT	O6-C6-C3	5.11	121.92	113.05
3	B	502	CIT	O6-C6-C3	3.93	119.88	113.05
2	A	501	FVR	C10-C11-N13	-3.80	104.83	109.71

Continued on next page...

Continued from previous page...

Mol	Chain	Res	Type	Atoms	Z	Observed(°)	Ideal(°)
2	B	501	FVR	C10-C11-N13	-3.53	105.18	109.71
3	B	502	CIT	C3-C4-C5	-3.33	105.76	113.81
2	A	501	FVR	N13-C14-N15	3.11	119.72	117.32
3	B	502	CIT	C2-C3-C6	-3.04	103.58	110.11
3	A	502	CIT	C3-C4-C5	-2.93	106.73	113.81
3	A	502	CIT	O2-C1-C2	2.85	123.49	114.35
2	B	501	FVR	C25-N09-C08	2.84	113.81	110.57
2	B	501	FVR	C07-C12-C11	-2.83	108.25	110.83
3	A	502	CIT	O1-C1-C2	-2.71	115.02	122.94
2	B	501	FVR	C12-C07-C08	2.69	112.40	109.76
2	A	501	FVR	C07-C12-C11	-2.58	108.48	110.83
2	B	501	FVR	C11-N13-C14	-2.46	118.34	122.20
2	B	501	FVR	C07-C08-N09	2.42	112.06	110.56
2	B	501	FVR	C14-N15-C16	2.36	122.61	120.92
3	A	502	CIT	O7-C3-C2	2.34	114.88	109.40
2	A	501	FVR	C12-C11-N13	2.28	114.03	110.57
3	A	502	CIT	O7-C3-C6	2.21	111.96	108.86
3	A	502	CIT	O7-C3-C4	-2.17	104.33	109.40
3	A	502	CIT	O5-C6-C3	-2.04	119.36	122.25
3	B	502	CIT	O7-C3-C6	2.02	111.70	108.86

There are no chirality outliers.

All (9) torsion outliers are listed below:

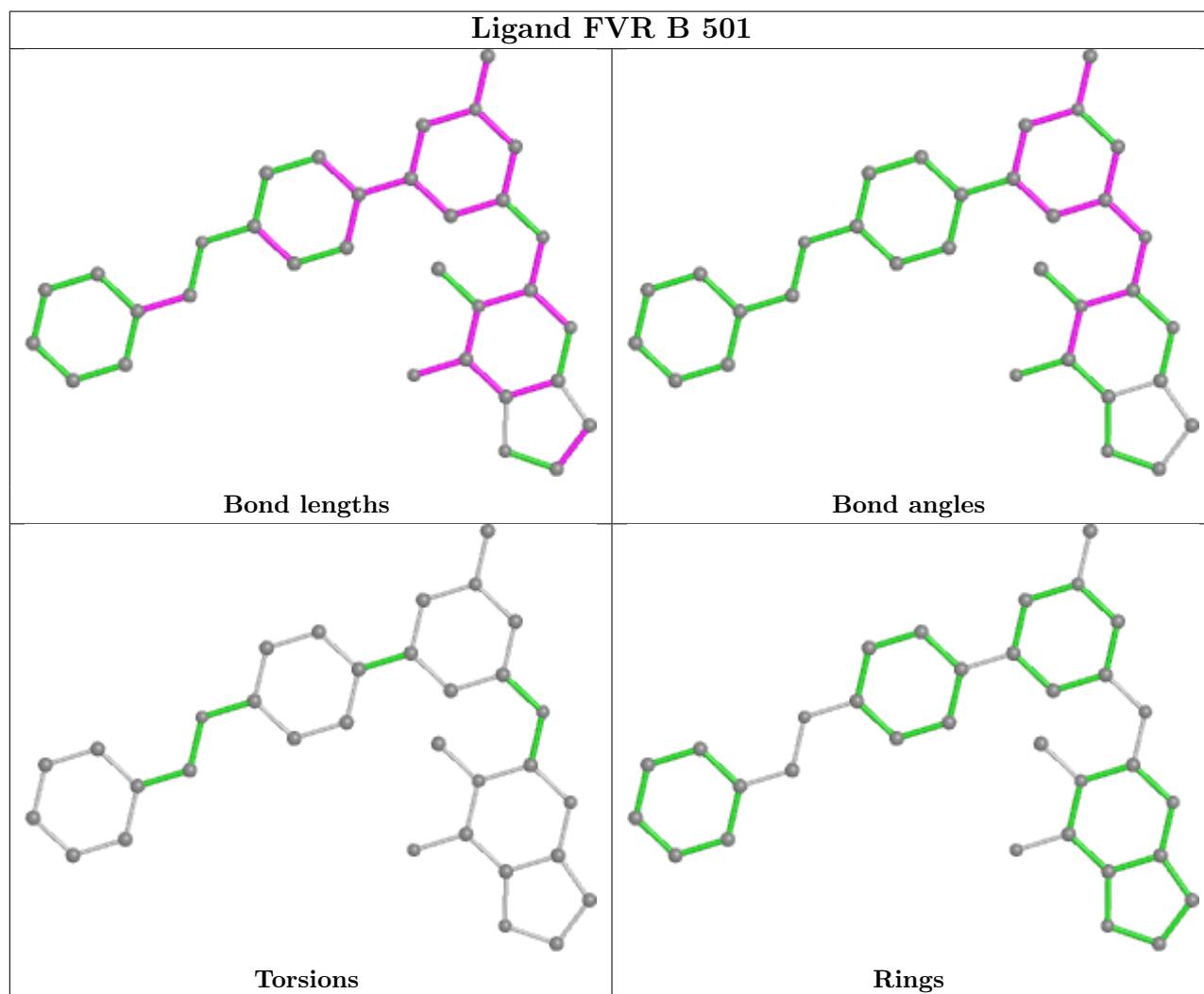
Mol	Chain	Res	Type	Atoms
3	B	502	CIT	C2-C3-C4-C5
3	B	502	CIT	O7-C3-C4-C5
3	B	502	CIT	C6-C3-C4-C5
3	A	502	CIT	C2-C3-C6-O6
3	A	502	CIT	C4-C3-C6-O6
3	A	502	CIT	C2-C3-C6-O5
3	A	502	CIT	O7-C3-C6-O5
3	A	502	CIT	O7-C3-C6-O6
3	A	502	CIT	C4-C3-C6-O5

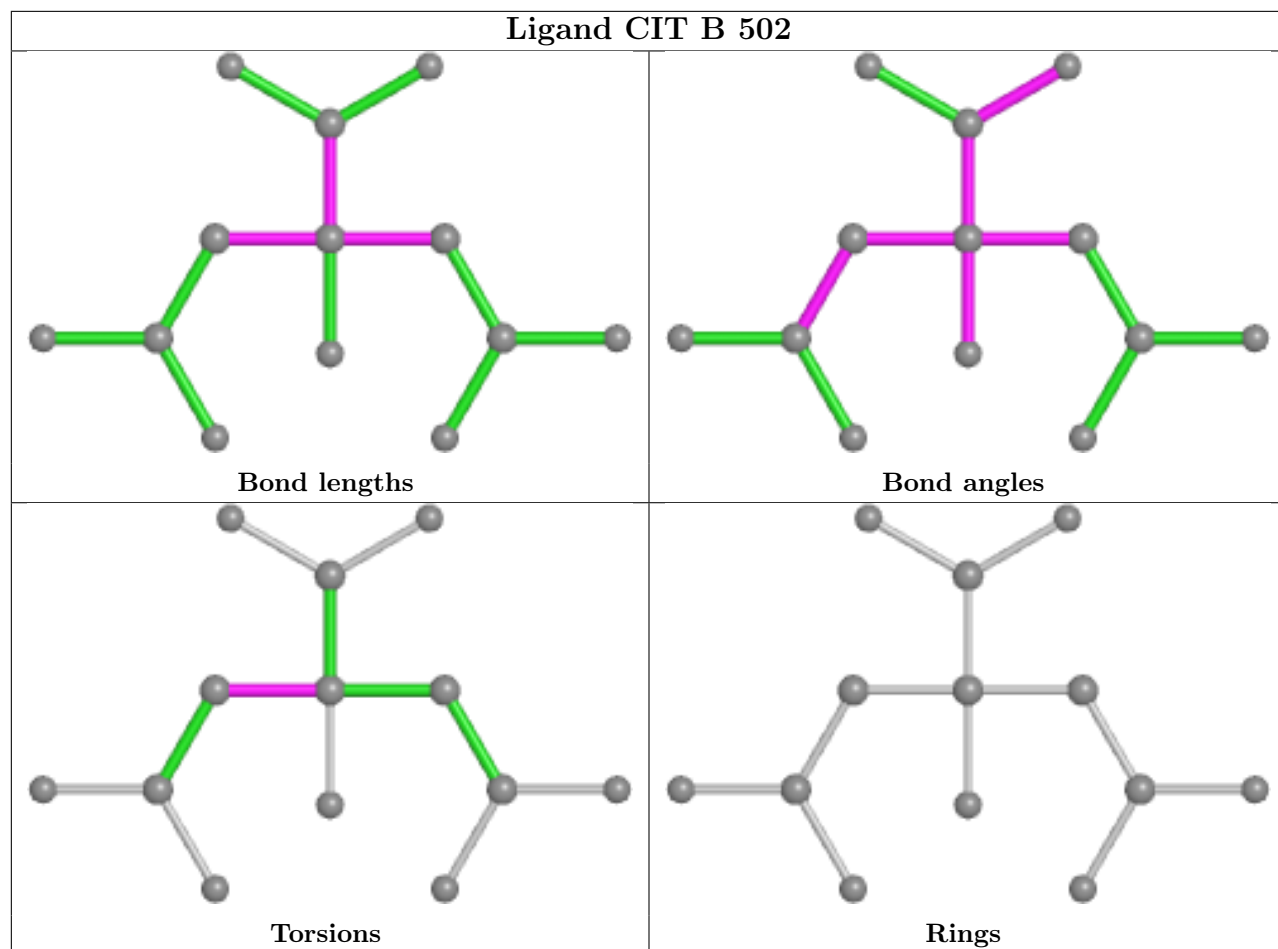
There are no ring outliers.

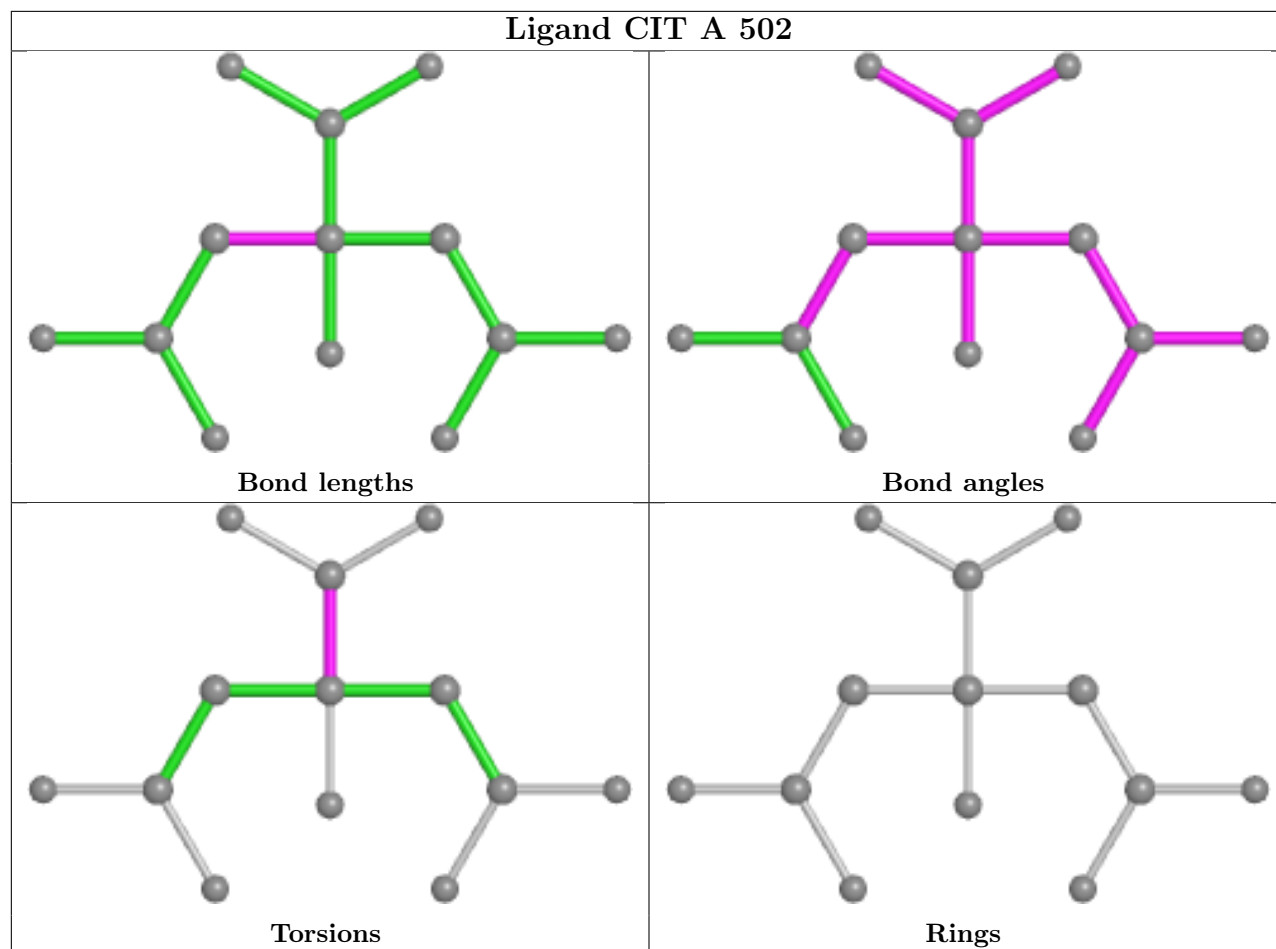
2 monomers are involved in 2 short contacts:

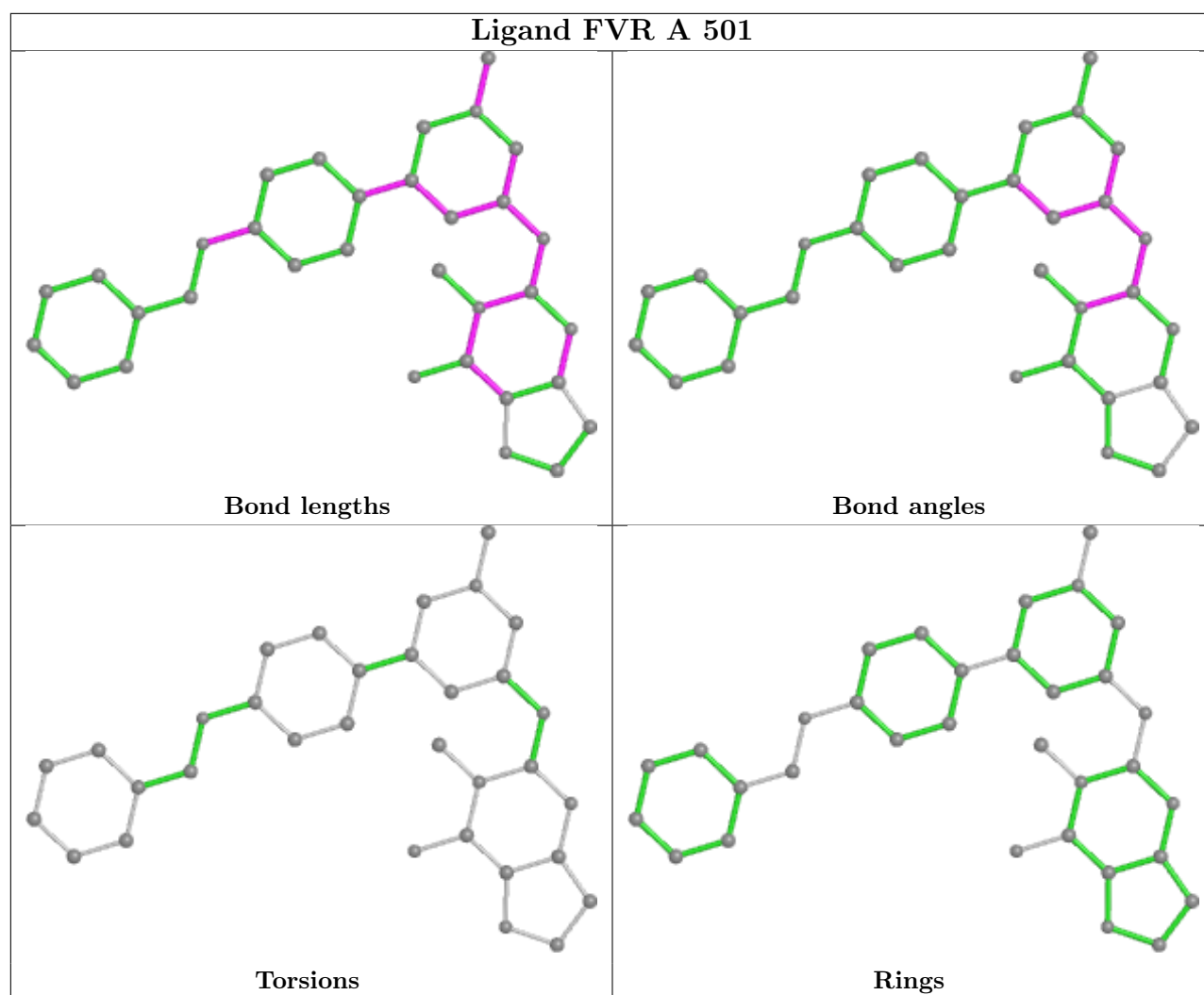
Mol	Chain	Res	Type	Clashes	Symm-Clashes
3	B	502	CIT	1	0
3	A	502	CIT	1	0

The following is a two-dimensional graphical depiction of Mogul quality analysis of bond lengths, bond angles, torsion angles, and ring geometry for all instances of the Ligand of Interest. In addition, ligands with molecular weight > 250 and outliers as shown on the validation Tables will also be included. For torsion angles, if less than 5% of the Mogul distribution of torsion angles is within 10 degrees of the torsion angle in question, then that torsion angle is considered an outlier. Any bond that is central to one or more torsion angles identified as an outlier by Mogul will be highlighted in the graph. For rings, the root-mean-square deviation (RMSD) between the ring in question and similar rings identified by Mogul is calculated over all ring torsion angles. If the average RMSD is greater than 60 degrees and the minimal RMSD between the ring in question and any Mogul-identified rings is also greater than 60 degrees, then that ring is considered an outlier. The outliers are highlighted in purple. The color gray indicates Mogul did not find sufficient equivalents in the CSD to analyse the geometry.









5.7 Other polymers [\(i\)](#)

There are no such residues in this entry.

5.8 Polymer linkage issues [\(i\)](#)

There are no chain breaks in this entry.

6 Fit of model and data

6.1 Protein, DNA and RNA chains

In the following table, the column labelled ‘#RSRZ > 2’ contains the number (and percentage) of RSRZ outliers, followed by percent RSRZ outliers for the chain as percentile scores relative to all X-ray entries and entries of similar resolution. The OWAB column contains the minimum, median, 95th percentile and maximum values of the occupancy-weighted average B-factor per residue. The column labelled ‘Q < 0.9’ lists the number of (and percentage) of residues with an average occupancy less than 0.9.

Mol	Chain	Analysed	<RSRZ>	#RSRZ>2	OWAB(Å ²)	Q<0.9
1	A	215/240 (89%)	0.06	10 (4%) 31 28	4, 13, 33, 49	1 (0%)
1	B	215/240 (89%)	0.64	23 (10%) 6 5	5, 19, 49, 77	0
All	All	430/480 (89%)	0.35	33 (7%) 13 11	4, 16, 42, 77	1 (0%)

All (33) RSRZ outliers are listed below:

Mol	Chain	Res	Type	RSRZ
1	B	192	LEU	13.8
1	B	404	SER	9.9
1	B	403	THR	9.8
1	B	226	PRO	8.5
1	B	405	SER	8.4
1	B	191	GLU	6.0
1	B	224	VAL	5.6
1	A	224	VAL	4.8
1	B	227	GLY	4.7
1	B	402	LYS	4.5
1	B	271	GLY	4.1
1	A	256[A]	ASP	4.0
1	B	401	MET	3.9
1	A	399	PHE	3.8
1	A	191	GLU	3.3
1	B	383	LYS	3.1
1	B	196	GLY	3.1
1	B	400	SER	3.0
1	B	221	ILE	3.0
1	B	223	THR	2.9
1	A	405	SER	2.8
1	B	237	LYS	2.6
1	B	353	LEU	2.5
1	B	347	LEU	2.3

Continued on next page...

Continued from previous page...

Mol	Chain	Res	Type	RSRZ
1	A	255[A]	ALA	2.3
1	A	402	LYS	2.3
1	B	399	PHE	2.3
1	B	222	GLN	2.2
1	A	257[A]	LYS	2.1
1	B	327	ILE	2.1
1	B	225	GLY	2.0
1	A	227	GLY	2.0
1	A	192	LEU	2.0

6.2 Non-standard residues in protein, DNA, RNA chains [i](#)

There are no non-standard protein/DNA/RNA residues in this entry.

6.3 Carbohydrates [i](#)

There are no monosaccharides in this entry.

6.4 Ligands [i](#)

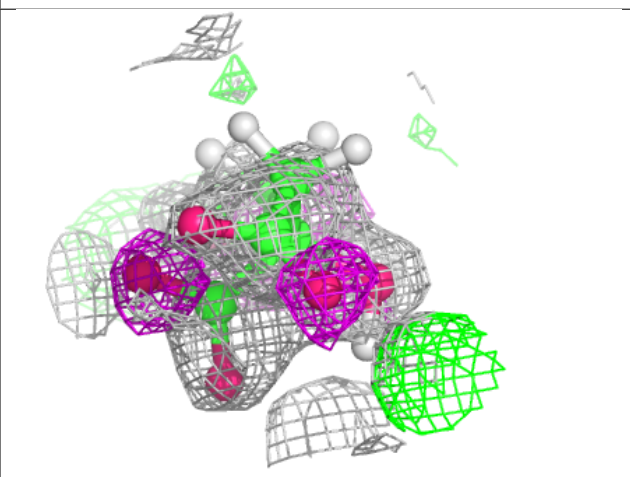
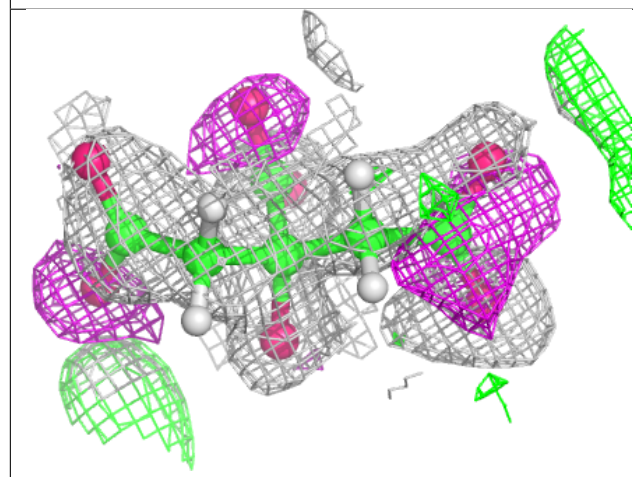
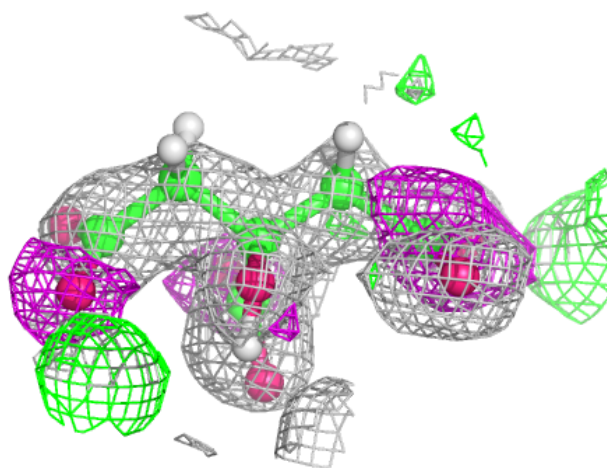
In the following table, the Atoms column lists the number of modelled atoms in the group and the number defined in the chemical component dictionary. The B-factors column lists the minimum, median, 95th percentile and maximum values of B factors of atoms in the group. The column labelled 'Q< 0.9' lists the number of atoms with occupancy less than 0.9.

Mol	Type	Chain	Res	Atoms	RSCC	RSR	B-factors(Å ²)	Q<0.9
3	CIT	A	502	13/13	0.80	0.28	15,29,42,45	0
3	CIT	B	502	13/13	0.81	0.26	23,31,43,46	0
2	FVR	B	501	33/33	0.96	0.10	4,6,12,12	0
2	FVR	A	501	33/33	0.97	0.10	2,6,10,12	0

The following is a graphical depiction of the model fit to experimental electron density of all instances of the Ligand of Interest. In addition, ligands with molecular weight > 250 and outliers as shown on the geometry validation Tables will also be included. Each fit is shown from different orientation to approximate a three-dimensional view.

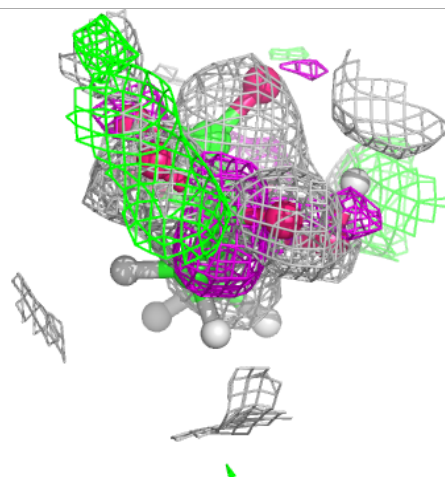
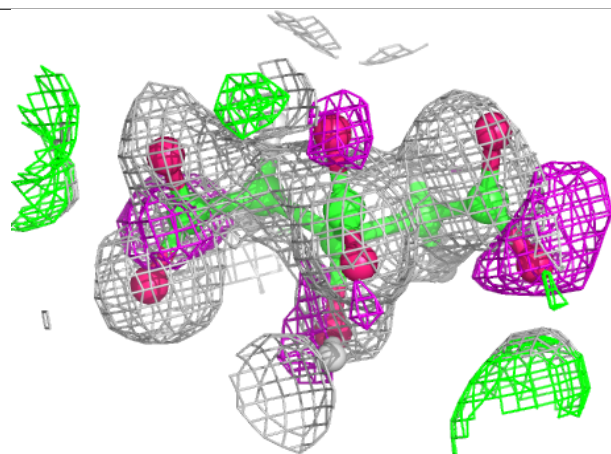
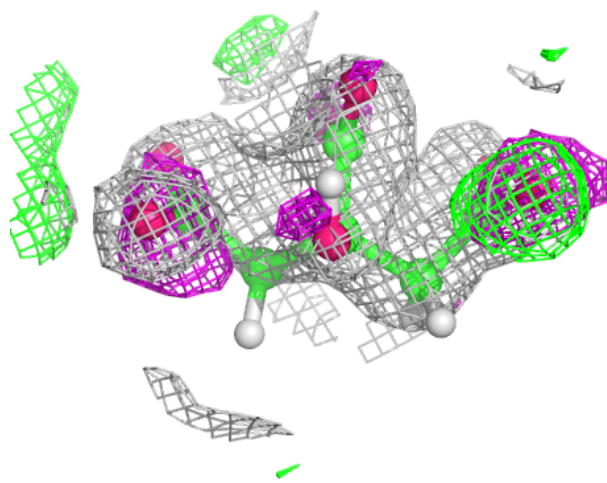
Electron density around CIT A 502:

$2mF_o-DF_c$ (at 0.7 rmsd) in gray
 mF_o-DF_c (at 3 rmsd) in purple (negative)
and green (positive)



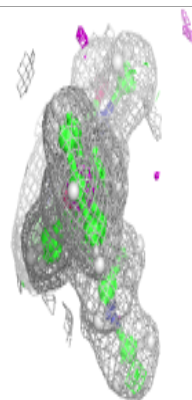
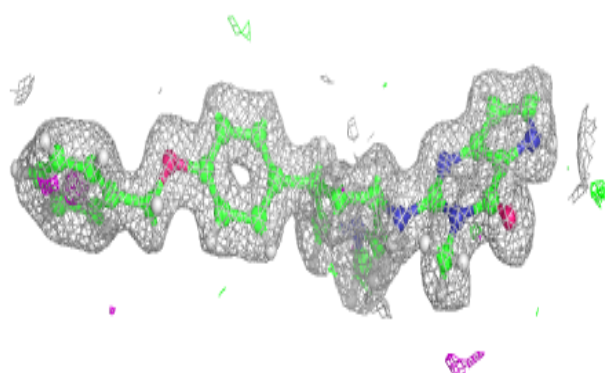
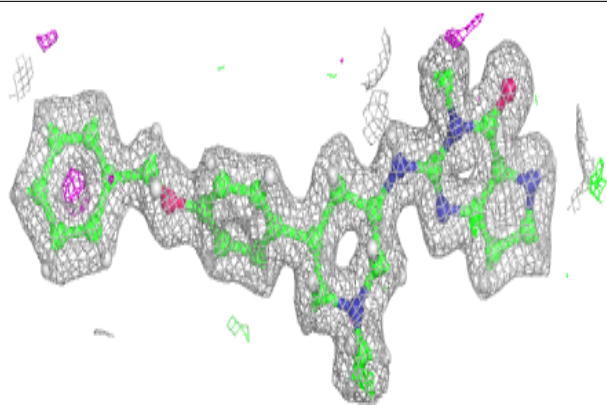
Electron density around CIT B 502:

$2mF_o-DF_c$ (at 0.7 rmsd) in gray
 mF_o-DF_c (at 3 rmsd) in purple (negative)
and green (positive)

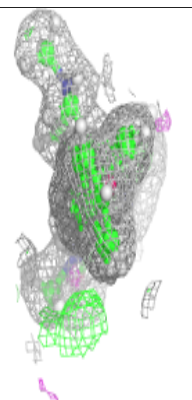
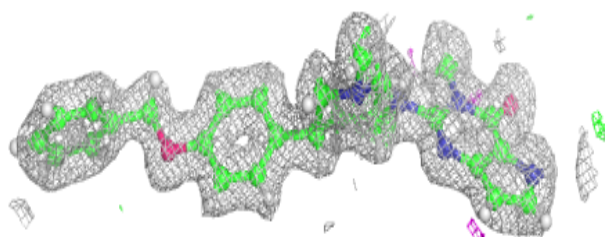
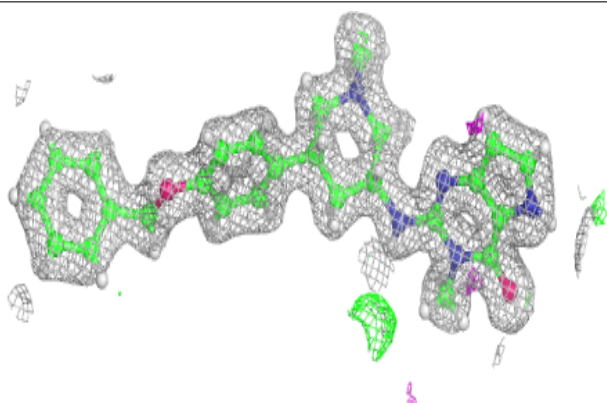


Electron density around FVR B 501:

$2mF_o-DF_c$ (at 0.7 rmsd) in gray
 mF_o-DF_c (at 3 rmsd) in purple (negative)
and green (positive)

**Electron density around FVR A 501:**

$2mF_o-DF_c$ (at 0.7 rmsd) in gray
 mF_o-DF_c (at 3 rmsd) in purple (negative)
and green (positive)



6.5 Other polymers [i](#)

There are no such residues in this entry.