



# Full wwPDB X-ray Structure Validation Report ⓘ

May 25, 2020 – 01:03 pm BST

PDB ID : 4CFB  
Title : Interrogating HIV integrase for compounds that bind- a SAMPL challenge  
Authors : Peat, T.S.  
Deposited on : 2013-11-14  
Resolution : 1.95 Å(reported)

This is a Full wwPDB X-ray Structure Validation Report for a publicly released PDB entry.

We welcome your comments at [validation@mail.wwpdb.org](mailto:validation@mail.wwpdb.org)

A user guide is available at

<https://www.wwpdb.org/validation/2017/XrayValidationReportHelp>

with specific help available everywhere you see the ⓘ symbol.

---

The following versions of software and data (see [references ⓘ](#)) were used in the production of this report:

MolProbity : 4.02b-467  
Mogul : 1.8.5 (274361), CSD as541be (2020)  
Xtriage (Phenix) : 1.13  
EDS : 2.11  
buster-report : 1.1.7 (2018)  
Percentile statistics : 20191225.v01 (using entries in the PDB archive December 25th 2019)  
Refmac : 5.8.0158  
CCP4 : 7.0.044 (Gargrove)  
Ideal geometry (proteins) : Engh & Huber (2001)  
Ideal geometry (DNA, RNA) : Parkinson et al. (1996)  
Validation Pipeline (wwPDB-VP) : 2.11

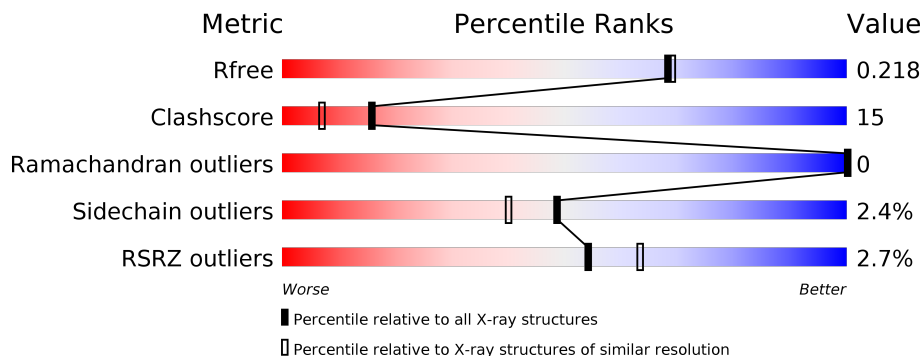
# 1 Overall quality at a glance

The following experimental techniques were used to determine the structure:

*X-RAY DIFFRACTION*

The reported resolution of this entry is 1.95 Å.

Percentile scores (ranging between 0-100) for global validation metrics of the entry are shown in the following graphic. The table shows the number of entries on which the scores are based.



Metric	Whole archive (#Entries)	Similar resolution (#Entries, resolution range(Å))
$R_{free}$	130704	2580 (1.96-1.96)
Clashscore	141614	2705 (1.96-1.96)
Ramachandran outliers	138981	2678 (1.96-1.96)
Sidechain outliers	138945	2678 (1.96-1.96)
RSRZ outliers	127900	2539 (1.96-1.96)

The table below summarises the geometric issues observed across the polymeric chains and their fit to the electron density. The red, orange, yellow and green segments on the lower bar indicate the fraction of residues that contain outliers for  $\geq 3$ , 2, 1 and 0 types of geometric quality criteria respectively. A grey segment represents the fraction of residues that are not modelled. The numeric value for each fraction is indicated below the corresponding segment, with a dot representing fractions  $\leq 5\%$ . The upper red bar (where present) indicates the fraction of residues that have poor fit to the electron density. The numeric value is given above the bar.

Mol	Chain	Length	Quality of chain
1	A	183	 2% 67% 14% 19%
1	B	183	 3% 68% 11% 19%

The following table lists non-polymeric compounds, carbohydrate monomers and non-standard residues in protein, DNA, RNA chains that are outliers for geometric or electron-density-fit criteria:

Mol	Type	Chain	Res	Chirality	Geometry	Clashes	Electron density
3	ACT	A	1213	-	-	X	-
3	ACT	A	1214	-	-	X	-
3	ACT	A	1215	-	-	X	-
3	ACT	A	1216	-	-	X	-

## 2 Entry composition i

There are 5 unique types of molecules in this entry. The entry contains 2629 atoms, of which 0 are hydrogens and 0 are deuteriums.

In the tables below, the ZeroOcc column contains the number of atoms modelled with zero occupancy, the AltConf column contains the number of residues with at least one atom in alternate conformation and the Trace column contains the number of residues modelled with at most 2 atoms.

- Molecule 1 is a protein called INTEGRASE.

Mol	Chain	Residues	Atoms					ZeroOcc	AltConf	Trace
			Total	C	N	O	S			
1	A	149	1210	778	205	223	4	0	10	0
1	B	149	1206	773	206	223	4	0	9	0

There are 46 discrepancies between the modelled and reference sequences:

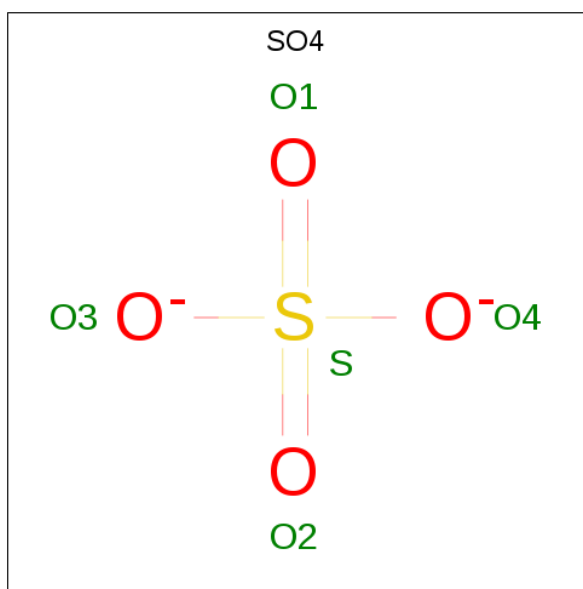
Chain	Residue	Modelled	Actual	Comment	Reference
A	30	MET	-	expression tag	UNP Q76353
A	31	GLY	-	expression tag	UNP Q76353
A	32	SER	-	expression tag	UNP Q76353
A	33	SER	-	expression tag	UNP Q76353
A	34	HIS	-	expression tag	UNP Q76353
A	35	HIS	-	expression tag	UNP Q76353
A	36	HIS	-	expression tag	UNP Q76353
A	37	HIS	-	expression tag	UNP Q76353
A	38	HIS	-	expression tag	UNP Q76353
A	39	HIS	-	expression tag	UNP Q76353
A	40	SER	-	expression tag	UNP Q76353
A	41	SER	-	expression tag	UNP Q76353
A	42	GLY	-	expression tag	UNP Q76353
A	43	LEU	-	expression tag	UNP Q76353
A	44	VAL	-	expression tag	UNP Q76353
A	45	PRO	-	expression tag	UNP Q76353
A	46	ARG	-	expression tag	UNP Q76353
A	47	GLY	-	expression tag	UNP Q76353
A	48	SER	-	expression tag	UNP Q76353
A	49	HIS	-	expression tag	UNP Q76353
A	56	SER	CYS	engineered mutation	UNP Q76353
A	139	ASP	PHE	engineered mutation	UNP Q76353
A	185	HIS	PHE	engineered mutation	UNP Q76353
B	30	MET	-	expression tag	UNP Q76353
B	31	GLY	-	expression tag	UNP Q76353

*Continued on next page...*

Continued from previous page...

Chain	Residue	Modelled	Actual	Comment	Reference
B	32	SER	-	expression tag	UNP Q76353
B	33	SER	-	expression tag	UNP Q76353
B	34	HIS	-	expression tag	UNP Q76353
B	35	HIS	-	expression tag	UNP Q76353
B	36	HIS	-	expression tag	UNP Q76353
B	37	HIS	-	expression tag	UNP Q76353
B	38	HIS	-	expression tag	UNP Q76353
B	39	HIS	-	expression tag	UNP Q76353
B	40	SER	-	expression tag	UNP Q76353
B	41	SER	-	expression tag	UNP Q76353
B	42	GLY	-	expression tag	UNP Q76353
B	43	LEU	-	expression tag	UNP Q76353
B	44	VAL	-	expression tag	UNP Q76353
B	45	PRO	-	expression tag	UNP Q76353
B	46	ARG	-	expression tag	UNP Q76353
B	47	GLY	-	expression tag	UNP Q76353
B	48	SER	-	expression tag	UNP Q76353
B	49	HIS	-	expression tag	UNP Q76353
B	56	SER	CYS	engineered mutation	UNP Q76353
B	139	ASP	PHE	engineered mutation	UNP Q76353
B	185	HIS	PHE	engineered mutation	UNP Q76353

- Molecule 2 is SULFATE ION (three-letter code: SO4) (formula: O<sub>4</sub>S).



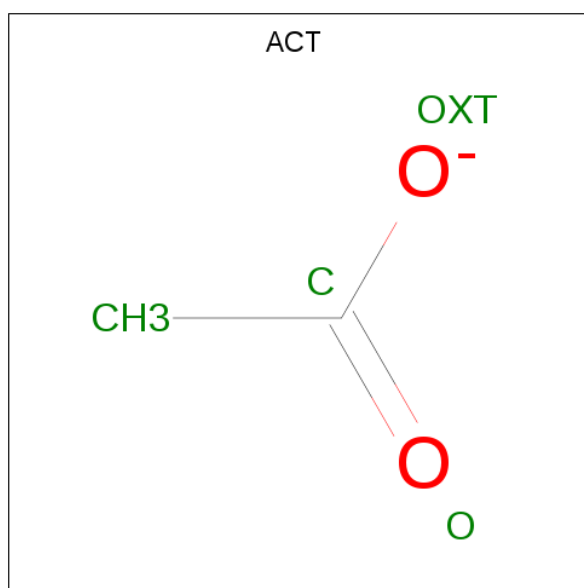
Mol	Chain	Residues	Atoms			ZeroOcc	AltConf
2	A	1	Total	O	S	0	0
			5	4	1		

Continued on next page...

Continued from previous page...

Mol	Chain	Residues	Atoms			ZeroOcc	AltConf
2	A	1	Total	O	S	0	0
			5	4	1		
2	A	1	Total	O	S	0	0
			5	4	1		
2	B	1	Total	O	S	0	0
			5	4	1		
2	B	1	Total	O	S	0	0
			5	4	1		

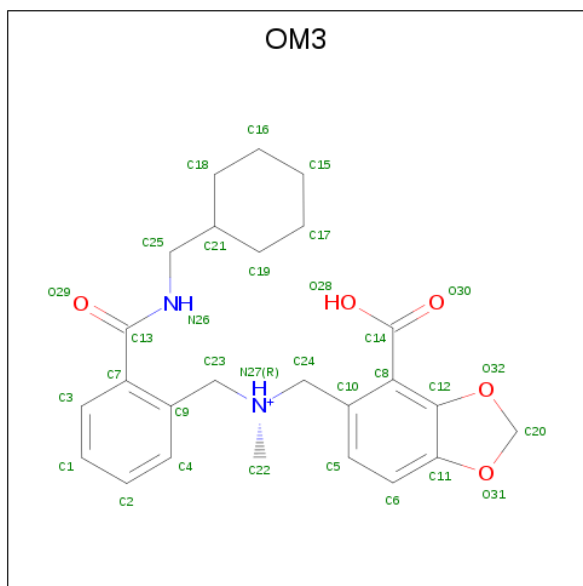
- Molecule 3 is ACETATE ION (three-letter code: ACT) (formula: C<sub>2</sub>H<sub>3</sub>O<sub>2</sub>).



Mol	Chain	Residues	Atoms			ZeroOcc	AltConf
3	A	1	Total	C	O	0	0
			4	2	2		
3	A	1	Total	C	O	0	0
			4	2	2		
3	A	1	Total	C	O	0	0
			4	2	2		
3	A	1	Total	C	O	0	0
			4	2	2		
3	B	1	Total	C	O	0	0
			4	2	2		

- Molecule 4 is (R)-(4-CARBOXY-1,3-BENZODIOXOL-5-YL)METHYL-[[2-(CYCLOHEXYLMETHYLCARBAMOYL)PHENYL]METHYL]-METHYL-AZANIUM (three-letter code:

OM3) (formula: C<sub>25</sub>H<sub>31</sub>N<sub>2</sub>O<sub>5</sub>).



Mol	Chain	Residues	Atoms			ZeroOcc	AltConf	
4	A	1	Total	C	N	O	0	0
			32	25	2	5		
4	B	1	Total	C	N	O	0	0
			32	25	2	5		

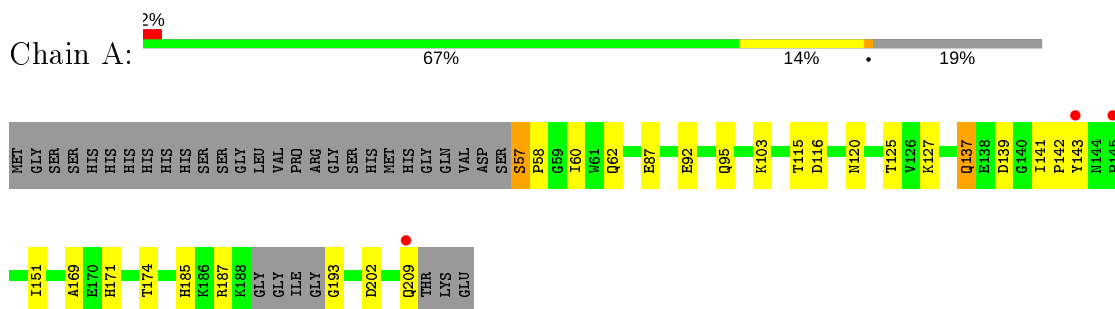
- Molecule 5 is water.

Mol	Chain	Residues	Atoms		ZeroOcc	AltConf
5	A	57	Total	O	0	0
			57	57		
5	B	42	Total	O	0	0
			42	42		

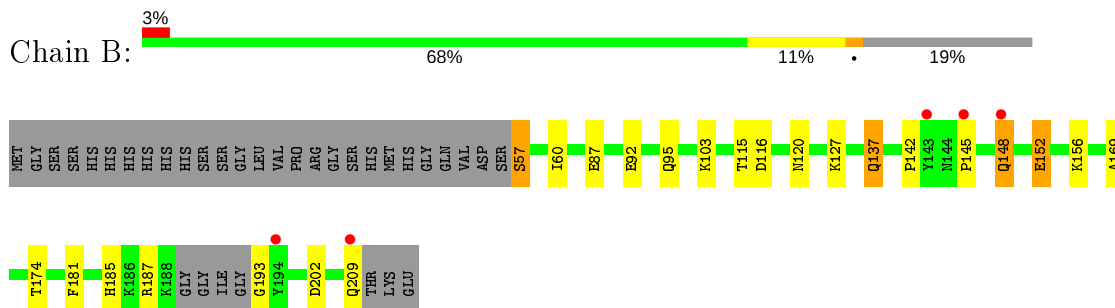
### 3 Residue-property plots [i](#)

These plots are drawn for all protein, RNA and DNA chains in the entry. The first graphic for a chain summarises the proportions of the various outlier classes displayed in the second graphic. The second graphic shows the sequence view annotated by issues in geometry and electron density. Residues are color-coded according to the number of geometric quality criteria for which they contain at least one outlier: green = 0, yellow = 1, orange = 2 and red = 3 or more. A red dot above a residue indicates a poor fit to the electron density ( $RSRZ > 2$ ). Stretches of 2 or more consecutive residues without any outlier are shown as a green connector. Residues present in the sample, but not in the model, are shown in grey.

- Molecule 1: INTEGRASE



- Molecule 1: INTEGRASE





## 4 Data and refinement statistics

Property	Value	Source
Space group	P 31	Depositor
Cell constants a, b, c, $\alpha$ , $\beta$ , $\gamma$	71.16Å 71.16Å 67.02Å 90.00° 90.00° 120.00°	Depositor
Resolution (Å)	31.42 – 1.95 30.81 – 1.95	Depositor EDS
% Data completeness (in resolution range)	100.0 (31.42-1.95) 100.0 (30.81-1.95)	Depositor EDS
$R_{merge}$	0.08	Depositor
$R_{sym}$	(Not available)	Depositor
$\langle I/\sigma(I) \rangle$ <sup>1</sup>	2.10 (at 1.95Å)	Xtriage
Refinement program	REFMAC 5.2.0019	Depositor
R, $R_{free}$	0.182 , 0.219 0.180 , 0.218	Depositor DCC
$R_{free}$ test set	1401 reflections (5.06%)	wwPDB-VP
Wilson B-factor (Å <sup>2</sup> )	24.0	Xtriage
Anisotropy	0.013	Xtriage
Bulk solvent $k_{sol}$ (e/Å <sup>3</sup> ), $B_{sol}$ (Å <sup>2</sup> )	0.34 , 28.2	EDS
L-test for twinning <sup>2</sup>	$\langle  L  \rangle = 0.49$ , $\langle L^2 \rangle = 0.32$	Xtriage
Estimated twinning fraction	0.032 for -h,-k,l 0.487 for h,-h-k,-l 0.033 for -k,-h,-l	Xtriage
$F_o, F_c$ correlation	0.96	EDS
Total number of atoms	2629	wwPDB-VP
Average B, all atoms (Å <sup>2</sup> )	25.0	wwPDB-VP

Xtriage's analysis on translational NCS is as follows: *The largest off-origin peak in the Patterson function is 7.47% of the height of the origin peak. No significant pseudotranslation is detected.*

<sup>1</sup>Intensities estimated from amplitudes.

<sup>2</sup>Theoretical values of  $\langle |L| \rangle$ ,  $\langle L^2 \rangle$  for acentric reflections are 0.5, 0.333 respectively for untwinned datasets, and 0.375, 0.2 for perfectly twinned datasets.

## 5 Model quality [i](#)

### 5.1 Standard geometry [i](#)

Bond lengths and bond angles in the following residue types are not validated in this section: OM3, SO4, ACT

The Z score for a bond length (or angle) is the number of standard deviations the observed value is removed from the expected value. A bond length (or angle) with  $|Z| > 5$  is considered an outlier worth inspection. RMSZ is the root-mean-square of all Z scores of the bond lengths (or angles).

Mol	Chain	Bond lengths		Bond angles	
		RMSZ	# Z  >5	RMSZ	# Z  >5
1	A	0.74	0/1264	0.64	0/1714
1	B	0.75	0/1257	0.65	0/1702
All	All	0.75	0/2521	0.65	0/3416

There are no bond length outliers.

There are no bond angle outliers.

There are no chirality outliers.

There are no planarity outliers.

### 5.2 Too-close contacts [i](#)

In the following table, the Non-H and H(model) columns list the number of non-hydrogen atoms and hydrogen atoms in the chain respectively. The H(added) column lists the number of hydrogen atoms added and optimized by MolProbity. The Clashes column lists the number of clashes within the asymmetric unit, whereas Symm-Clashes lists symmetry related clashes.

Mol	Chain	Non-H	H(model)	H(added)	Clashes	Symm-Clashes
1	A	1210	0	1246	39	0
1	B	1206	0	1237	32	0
2	A	15	0	0	1	0
2	B	15	0	0	0	0
3	A	16	0	12	31	0
3	B	4	0	3	0	0
4	A	32	0	29	2	0
4	B	32	0	28	2	0
5	A	57	0	0	2	0
5	B	42	0	0	2	0
All	All	2629	0	2555	74	0

The all-atom clashscore is defined as the number of clashes found per 1000 atoms (including hydrogen atoms). The all-atom clashscore for this structure is 15.

All (74) close contacts within the same asymmetric unit are listed below, sorted by their clash magnitude.

Atom-1	Atom-2	Interatomic distance (Å)	Clash overlap (Å)
1:A:185:HIS:CE1	3:A:1215:ACT:H2	1.84	1.12
1:A:185:HIS:CE1	3:A:1215:ACT:CH3	2.34	1.09
3:A:1214:ACT:H1	3:A:1216:ACT:H3	1.31	1.07
1:A:62[B]:GLN:NE2	1:A:151:ILE:HD11	1.68	1.06
3:A:1214:ACT:CH3	3:A:1216:ACT:H3	1.85	1.05
3:A:1214:ACT:H1	3:A:1216:ACT:CH3	1.92	0.98
1:A:87[B]:GLU:OE1	3:A:1216:ACT:OXT	1.87	0.92
1:A:62[B]:GLN:HE22	1:A:151:ILE:HD11	1.26	0.92
1:A:103[B]:LYS:NZ	3:A:1214:ACT:H2	1.87	0.90
1:A:185:HIS:CE1	3:A:1215:ACT:H1	2.08	0.87
3:A:1214:ACT:H1	3:A:1216:ACT:C	2.08	0.83
1:A:202[B]:ASP:OD1	1:B:209:GLN:NE2	2.10	0.83
1:A:87[B]:GLU:OE2	1:B:103[B]:LYS:HE3	1.81	0.80
3:A:1214:ACT:O	1:B:87[B]:GLU:OE1	2.00	0.79
1:B:145:PRO:HA	1:B:148:GLN:HE22	1.48	0.78
3:A:1216:ACT:H1	1:B:103[A]:LYS:NZ	2.02	0.74
1:A:103[B]:LYS:HZ2	3:A:1214:ACT:H2	1.55	0.72
1:A:62[B]:GLN:NE2	1:A:151:ILE:CD1	2.50	0.72
1:A:103[A]:LYS:HZ3	3:A:1214:ACT:H3	1.55	0.71
1:B:142:PRO:HB2	1:B:148:GLN:NE2	2.07	0.69
3:A:1216:ACT:H1	1:B:103[A]:LYS:HZ2	1.57	0.68
1:A:141[B]:ILE:HD12	1:A:142:PRO:HD2	1.74	0.68
1:A:62[B]:GLN:HE22	1:A:151:ILE:CD1	2.05	0.67
1:A:103[B]:LYS:HZ1	3:A:1214:ACT:H2	1.59	0.65
1:A:103[B]:LYS:HE3	1:B:87[B]:GLU:OE2	1.98	0.64
1:A:87[B]:GLU:OE2	1:B:103[B]:LYS:CE	2.46	0.64
1:B:57:SER:HA	1:B:60:ILE:HD12	1.80	0.63
4:B:1214:OM3:H241	4:B:1214:OM3:H191	1.80	0.62
1:A:57:SER:HA	1:A:60:ILE:HD12	1.82	0.61
1:A:103[A]:LYS:HB3	3:A:1213:ACT:H2	1.82	0.61
3:A:1216:ACT:H2	5:A:2047:HOH:O	2.02	0.59
3:A:1214:ACT:H1	3:A:1216:ACT:O	2.03	0.58
1:A:169:ALA:HB1	1:A:174:THR:HB	1.85	0.58
1:A:171:HIS:HD2	2:A:1211:SO4:O3	1.87	0.57
1:A:103[B]:LYS:HZ2	3:A:1214:ACT:CH3	2.18	0.57
1:A:103[B]:LYS:HB3	3:A:1213:ACT:H2	1.87	0.56
1:B:187:ARG:HD3	1:B:193:GLY:O	2.05	0.56

*Continued on next page...*

*Continued from previous page...*

Atom-1	Atom-2	Interatomic distance (Å)	Clash overlap (Å)
1:A:185:HIS:ND1	3:A:1215:ACT:H2	2.20	0.55
3:A:1214:ACT:C	3:A:1216:ACT:H3	2.35	0.55
1:A:209:GLN:NE2	1:B:202[B]:ASP:OD1	2.36	0.55
1:A:185:HIS:HE1	3:A:1215:ACT:CH3	2.15	0.52
1:A:141[B]:ILE:HG23	1:A:143:TYR:CE2	2.44	0.52
1:A:103[B]:LYS:CE	1:B:87[B]:GLU:OE2	2.56	0.52
1:A:185:HIS:NE2	3:A:1215:ACT:H1	2.22	0.52
1:B:169:ALA:HB1	1:B:174:THR:HB	1.92	0.51
3:A:1214:ACT:C	1:B:87[B]:GLU:OE1	2.59	0.50
4:A:1217:OM3:H181	4:A:1217:OM3:H241	1.92	0.50
4:A:1217:OM3:O29	4:A:1217:OM3:H231	2.11	0.50
1:A:127:LYS:NZ	1:A:137:GLN:HE22	2.10	0.49
4:B:1214:OM3:H231	4:B:1214:OM3:O29	2.13	0.48
1:B:152:GLU:CD	1:B:156[B]:LYS:HZ1	2.16	0.48
1:B:181:PHE:O	1:B:185:HIS:HD2	1.95	0.48
1:A:87[B]:GLU:OE2	1:B:103[B]:LYS:NZ	2.45	0.48
3:A:1216:ACT:H1	1:B:103[B]:LYS:HZ2	1.79	0.47
1:B:92:GLU:OE2	1:B:116:ASP:OD2	2.33	0.47
1:B:152:GLU:CD	1:B:156[B]:LYS:NZ	2.68	0.47
1:A:57:SER:N	1:A:58:PRO:HD2	2.30	0.47
3:A:1216:ACT:CH3	1:B:103[A]:LYS:HZ2	2.27	0.46
1:A:103[B]:LYS:NZ	3:A:1214:ACT:CH3	2.69	0.46
1:B:115[B]:THR:CG2	1:B:120:ASN:HB3	2.46	0.46
1:B:95:GLN:HG3	5:B:2012:HOH:O	2.16	0.46
3:A:1216:ACT:CH3	1:B:103[B]:LYS:HZ2	2.29	0.45
1:A:103[B]:LYS:NZ	1:B:87[B]:GLU:OE2	2.49	0.45
3:A:1216:ACT:H1	1:B:103[A]:LYS:HZ3	1.81	0.44
1:B:57:SER:N	5:B:2001:HOH:O	2.52	0.43
3:A:1216:ACT:CH3	1:B:103[A]:LYS:NZ	2.76	0.42
1:B:142:PRO:HB2	1:B:148:GLN:HE21	1.79	0.42
1:A:139:ASP:OD1	1:A:141[B]:ILE:HG22	2.19	0.41
5:A:2027:HOH:O	1:B:185:HIS:HE1	2.04	0.41
1:A:95:GLN:HG2	1:A:125[A]:THR:HG21	2.02	0.41
1:A:115[B]:THR:CG2	1:A:120:ASN:HB3	2.50	0.41
1:A:92:GLU:OE2	1:A:116:ASP:OD2	2.39	0.41
1:A:187:ARG:HD2	1:A:193:GLY:O	2.21	0.40
1:B:127:LYS:NZ	1:B:137:GLN:HE22	2.19	0.40

There are no symmetry-related clashes.

## 5.3 Torsion angles [i](#)

### 5.3.1 Protein backbone [i](#)

In the following table, the Percentiles column shows the percent Ramachandran outliers of the chain as a percentile score with respect to all X-ray entries followed by that with respect to entries of similar resolution.

The Analysed column shows the number of residues for which the backbone conformation was analysed, and the total number of residues.

Mol	Chain	Analysed	Favoured	Allowed	Outliers	Percentiles	
1	A	155/183 (85%)	154 (99%)	1 (1%)	0	100	100
1	B	154/183 (84%)	153 (99%)	1 (1%)	0	100	100
All	All	309/366 (84%)	307 (99%)	2 (1%)	0	100	100

There are no Ramachandran outliers to report.

### 5.3.2 Protein sidechains [i](#)

In the following table, the Percentiles column shows the percent sidechain outliers of the chain as a percentile score with respect to all X-ray entries followed by that with respect to entries of similar resolution.

The Analysed column shows the number of residues for which the sidechain conformation was analysed, and the total number of residues.

Mol	Chain	Analysed	Rotameric	Outliers	Percentiles	
1	A	133/150 (89%)	131 (98%)	2 (2%)	65	60
1	B	132/150 (88%)	128 (97%)	4 (3%)	41	30
All	All	265/300 (88%)	259 (98%)	6 (2%)	49	42

All (6) residues with a non-rotameric sidechain are listed below:

Mol	Chain	Res	Type
1	A	57	SER
1	A	137	GLN
1	B	57	SER
1	B	137	GLN
1	B	148	GLN
1	B	152	GLU

Some sidechains can be flipped to improve hydrogen bonding and reduce clashes. All (7) such

sidechains are listed below:

Mol	Chain	Res	Type
1	A	137	GLN
1	A	171	HIS
1	B	137	GLN
1	B	148	GLN
1	B	171	HIS
1	B	185	HIS
1	B	209	GLN

### 5.3.3 RNA [i](#)

There are no RNA molecules in this entry.

### 5.4 Non-standard residues in protein, DNA, RNA chains [i](#)

There are no non-standard protein/DNA/RNA residues in this entry.

### 5.5 Carbohydrates [i](#)

There are no carbohydrates in this entry.

### 5.6 Ligand geometry [i](#)

13 ligands are modelled in this entry.

In the following table, the Counts columns list the number of bonds (or angles) for which Mogul statistics could be retrieved, the number of bonds (or angles) that are observed in the model and the number of bonds (or angles) that are defined in the Chemical Component Dictionary. The Link column lists molecule types, if any, to which the group is linked. The Z score for a bond length (or angle) is the number of standard deviations the observed value is removed from the expected value. A bond length (or angle) with  $|Z| > 2$  is considered an outlier worth inspection. RMSZ is the root-mean-square of all Z scores of the bond lengths (or angles).

Mol	Type	Chain	Res	Link	Bond lengths			Bond angles		
					Counts	RMSZ	# $ Z  > 2$	Counts	RMSZ	# $ Z  > 2$
4	OM3	B	1214	-	31,35,35	4.37	19 (61%)	31,48,48	3.40	20 (64%)
2	SO4	A	1210	-	4,4,4	0.20	0	6,6,6	0.62	0
3	ACT	A	1213	-	1,3,3	2.33	1 (100%)	0,3,3	0.00	-
3	ACT	B	1213	-	1,3,3	2.99	1 (100%)	0,3,3	0.00	-
2	SO4	A	1211	-	4,4,4	0.30	0	6,6,6	0.61	0

Mol	Type	Chain	Res	Link	Bond lengths			Bond angles		
					Counts	RMSZ	# Z  > 2	Counts	RMSZ	# Z  > 2
3	ACT	A	1214	-	1,3,3	0.17	0	0,3,3	0.00	-
2	SO4	A	1212	-	4,4,4	0.26	0	6,6,6	0.55	0
2	SO4	B	1212	-	4,4,4	0.11	0	6,6,6	0.63	0
4	OM3	A	1217	-	31,35,35	4.43	17 (54%)	31,48,48	3.29	17 (54%)
3	ACT	A	1215	-	1,3,3	1.14	0	0,3,3	0.00	-
2	SO4	B	1211	-	4,4,4	0.21	0	6,6,6	0.63	0
3	ACT	A	1216	-	1,3,3	1.98	0	0,3,3	0.00	-
2	SO4	B	1210	-	4,4,4	0.20	0	6,6,6	0.79	0

In the following table, the Chirals column lists the number of chiral outliers, the number of chiral centers analysed, the number of these observed in the model and the number defined in the Chemical Component Dictionary. Similar counts are reported in the Torsion and Rings columns. '-' means no outliers of that kind were identified.

Mol	Type	Chain	Res	Link	Chirals	Torsions	Rings
4	OM3	B	1214	-	-	5/17/63/63	0/4/4/4
4	OM3	A	1217	-	-	6/17/63/63	0/4/4/4

All (38) bond length outliers are listed below:

Mol	Chain	Res	Type	Atoms	Z	Observed(Å)	Ideal(Å)
4	A	1217	OM3	C6-C11	-12.15	1.38	1.52
4	B	1214	OM3	C6-C11	-12.12	1.38	1.52
4	A	1217	OM3	O30-C14	-8.81	1.27	1.40
4	A	1217	OM3	O28-C14	-8.80	1.27	1.40
4	B	1214	OM3	O30-C14	-8.66	1.27	1.40
4	B	1214	OM3	O28-C14	-7.99	1.28	1.40
4	A	1217	OM3	C3-C7	-7.06	1.38	1.51
4	B	1214	OM3	C3-C7	-6.67	1.39	1.51
4	A	1217	OM3	C17-C19	-5.83	1.37	1.53
4	B	1214	OM3	C16-C18	-5.83	1.37	1.53
4	A	1217	OM3	C16-C18	-5.65	1.38	1.53
4	B	1214	OM3	C17-C19	-5.63	1.38	1.53
4	B	1214	OM3	C3-C1	-5.51	1.39	1.52
4	A	1217	OM3	C3-C1	-5.47	1.39	1.52
4	A	1217	OM3	C19-C21	-5.18	1.38	1.52
4	B	1214	OM3	C18-C21	-5.14	1.38	1.52
4	B	1214	OM3	C19-C21	-4.99	1.38	1.52
4	B	1214	OM3	C6-C5	-4.95	1.39	1.50
4	A	1217	OM3	C18-C21	-4.94	1.38	1.52
4	A	1217	OM3	C6-C5	-4.90	1.39	1.50
4	B	1214	OM3	O31-C11	-3.49	1.37	1.44

*Continued on next page...*

*Continued from previous page...*

Mol	Chain	Res	Type	Atoms	Z	Observed(Å)	Ideal(Å)
4	B	1214	OM3	C17-C15	-3.47	1.37	1.51
4	A	1217	OM3	C16-C15	-3.43	1.38	1.51
4	A	1217	OM3	C17-C15	-3.41	1.38	1.51
4	B	1214	OM3	C16-C15	-3.40	1.38	1.51
4	A	1217	OM3	O31-C11	-3.28	1.37	1.44
4	A	1217	OM3	C1-C2	-3.02	1.37	1.48
3	B	1213	ACT	CH3-C	2.99	1.52	1.48
4	B	1214	OM3	C1-C2	-2.93	1.38	1.48
4	B	1214	OM3	C8-C12	2.81	1.39	1.34
4	A	1217	OM3	C13-N26	2.78	1.38	1.33
4	B	1214	OM3	C13-N26	2.51	1.38	1.33
4	A	1217	OM3	C8-C12	2.47	1.39	1.34
3	A	1213	ACT	CH3-C	2.33	1.51	1.48
4	B	1214	OM3	O32-C12	2.12	1.39	1.35
4	B	1214	OM3	C4-C2	2.11	1.38	1.33
4	B	1214	OM3	C24-N27	2.10	1.51	1.46
4	A	1217	OM3	C5-C10	2.05	1.40	1.34

All (37) bond angle outliers are listed below:

Mol	Chain	Res	Type	Atoms	Z	Observed(°)	Ideal(°)
4	B	1214	OM3	C20-O32-C12	-8.83	100.40	107.23
4	A	1217	OM3	C20-O32-C12	-8.52	100.64	107.23
4	A	1217	OM3	O31-C11-C6	5.85	125.58	113.09
4	B	1214	OM3	O31-C11-C6	5.60	125.06	113.09
4	A	1217	OM3	C1-C3-C7	4.81	120.72	112.24
4	B	1214	OM3	C1-C3-C7	4.69	120.50	112.24
4	A	1217	OM3	C17-C19-C21	4.64	120.92	112.15
4	B	1214	OM3	C17-C19-C21	4.63	120.90	112.15
4	B	1214	OM3	C15-C16-C18	4.50	120.59	111.42
4	A	1217	OM3	C16-C18-C21	4.34	120.36	112.15
4	A	1217	OM3	C19-C21-C25	4.34	120.69	111.47
4	B	1214	OM3	C18-C21-C25	4.33	120.68	111.47
4	B	1214	OM3	C16-C18-C21	4.10	119.90	112.15
4	A	1217	OM3	C18-C21-C25	4.10	120.18	111.47
4	A	1217	OM3	C15-C16-C18	4.09	119.75	111.42
4	B	1214	OM3	C19-C21-C18	4.08	119.31	109.33
4	B	1214	OM3	C19-C21-C25	4.01	120.00	111.47
4	A	1217	OM3	C19-C21-C18	4.01	119.13	109.33
4	A	1217	OM3	C15-C17-C19	4.00	119.57	111.42
4	B	1214	OM3	O31-C20-O32	3.97	113.94	107.14
4	A	1217	OM3	O31-C20-O32	3.92	113.85	107.14

*Continued on next page...*



Continued from previous page...

Mol	Chain	Res	Type	Atoms	Z	Observed(°)	Ideal(°)
4	B	1214	OM3	C15-C17-C19	3.87	119.31	111.42
4	B	1214	OM3	O30-C14-O28	3.81	124.45	111.81
4	A	1217	OM3	O30-C14-O28	3.80	124.44	111.81
4	B	1214	OM3	C10-C24-N27	-3.72	108.31	113.46
4	B	1214	OM3	C3-C1-C2	3.12	120.45	113.56
4	A	1217	OM3	C3-C1-C2	3.00	120.18	113.56
4	A	1217	OM3	C17-C15-C16	2.95	120.26	111.18
4	B	1214	OM3	C17-C15-C16	2.86	119.97	111.18
4	A	1217	OM3	C20-O31-C11	-2.47	101.04	106.70
4	B	1214	OM3	C22-N27-C24	2.42	116.75	110.16
4	B	1214	OM3	C20-O31-C11	-2.41	101.17	106.70
4	B	1214	OM3	C25-N26-C13	-2.24	118.75	122.15
4	A	1217	OM3	C23-C9-C7	-2.16	121.02	123.96
4	B	1214	OM3	C23-C9-C7	-2.11	121.08	123.96
4	A	1217	OM3	C22-N27-C24	2.07	115.81	110.16
4	B	1214	OM3	C24-C10-C5	-2.01	117.31	121.78

There are no chirality outliers.

All (11) torsion outliers are listed below:

Mol	Chain	Res	Type	Atoms
4	B	1214	OM3	C18-C21-C25-N26
4	A	1217	OM3	C19-C21-C25-N26
4	A	1217	OM3	C10-C24-N27-C22
4	A	1217	OM3	C9-C23-N27-C22
4	A	1217	OM3	N26-C13-C7-C3
4	B	1214	OM3	N27-C23-C9-C7
4	A	1217	OM3	N27-C23-C9-C7
4	B	1214	OM3	C19-C21-C25-N26
4	A	1217	OM3	C18-C21-C25-N26
4	B	1214	OM3	C10-C24-N27-C22
4	B	1214	OM3	N26-C13-C7-C3

There are no ring outliers.

7 monomers are involved in 36 short contacts:

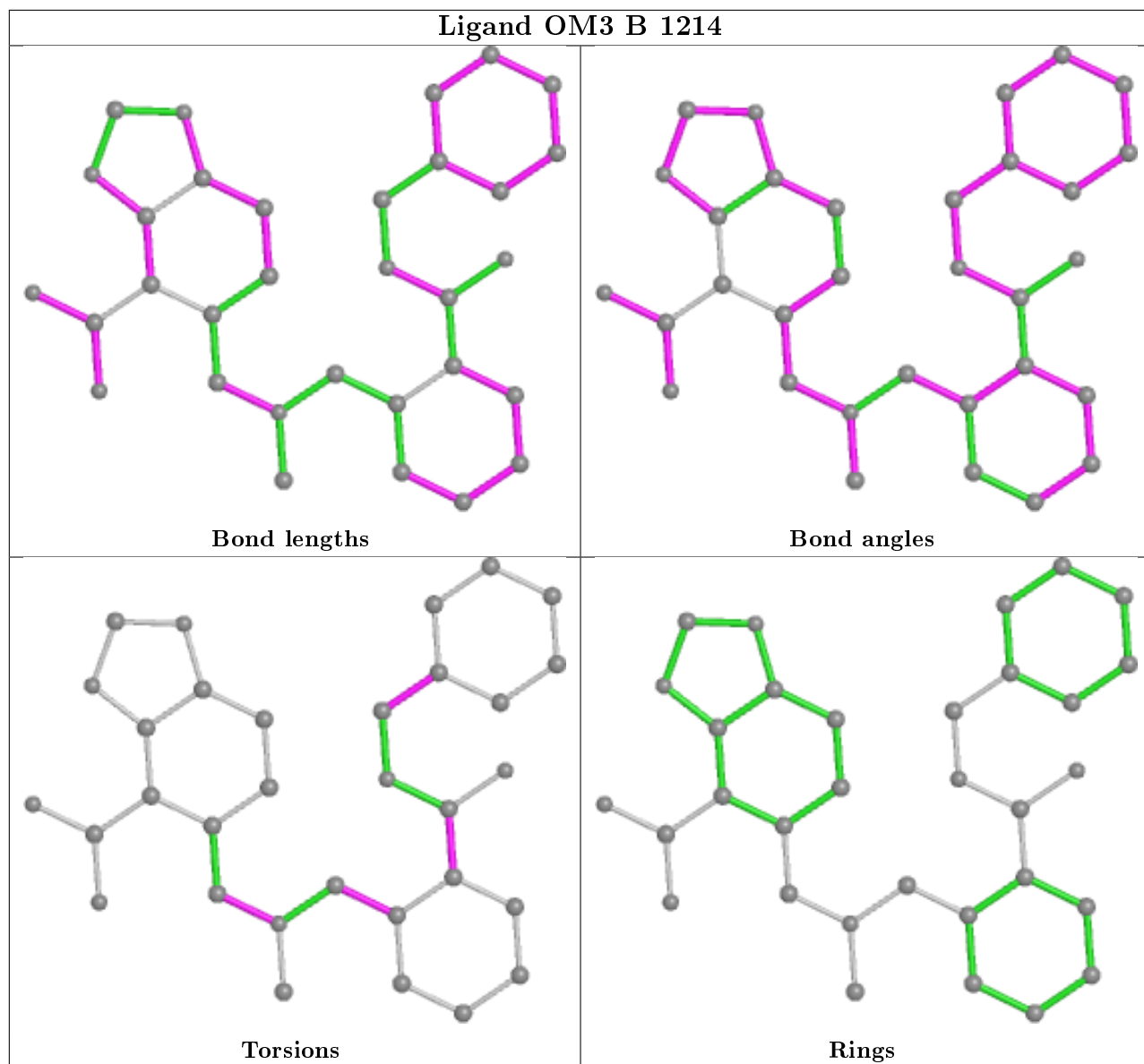
Mol	Chain	Res	Type	Clashes	Symm-Clashes
4	B	1214	OM3	2	0
3	A	1213	ACT	2	0
2	A	1211	SO4	1	0
3	A	1214	ACT	14	0

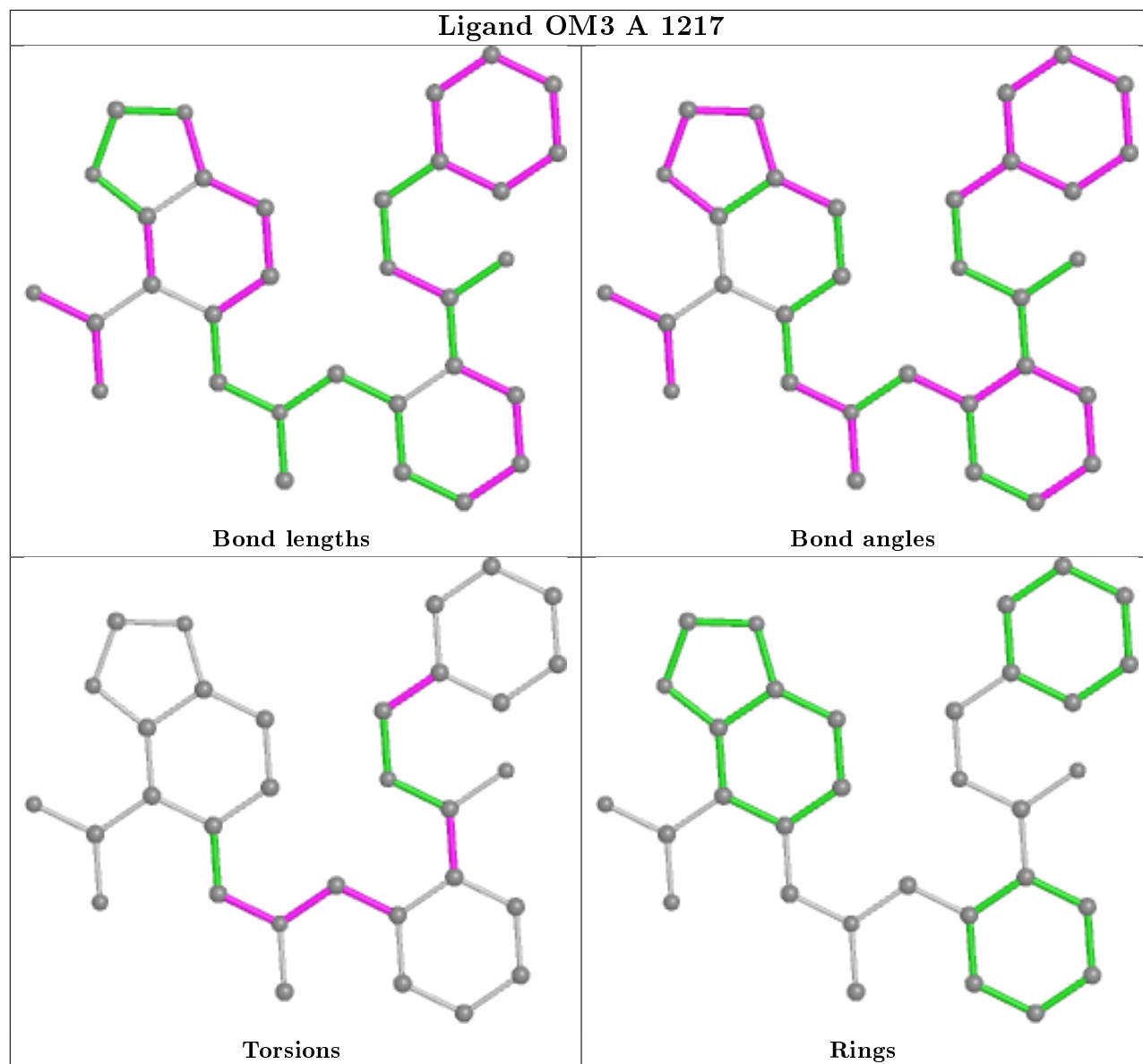
Continued on next page...

*Continued from previous page...*

Mol	Chain	Res	Type	Clashes	Symm-Clashes
4	A	1217	OM3	2	0
3	A	1215	ACT	6	0
3	A	1216	ACT	15	0

The following is a two-dimensional graphical depiction of Mogul quality analysis of bond lengths, bond angles, torsion angles, and ring geometry for all instances of the Ligand of Interest. In addition, ligands with molecular weight > 250 and outliers as shown on the validation Tables will also be included. For torsion angles, if less than 5% of the Mogul distribution of torsion angles is within 10 degrees of the torsion angle in question, then that torsion angle is considered an outlier. Any bond that is central to one or more torsion angles identified as an outlier by Mogul will be highlighted in the graph. For rings, the root-mean-square deviation (RMSD) between the ring in question and similar rings identified by Mogul is calculated over all ring torsion angles. If the average RMSD is greater than 60 degrees and the minimal RMSD between the ring in question and any Mogul-identified rings is also greater than 60 degrees, then that ring is considered an outlier. The outliers are highlighted in purple. The color gray indicates Mogul did not find sufficient equivalents in the CSD to analyse the geometry.





## 5.7 Other polymers [i](#)

There are no such residues in this entry.

## 5.8 Polymer linkage issues [i](#)

There are no chain breaks in this entry.

## 6 Fit of model and data [i](#)

### 6.1 Protein, DNA and RNA chains [i](#)

In the following table, the column labelled ‘#RSRZ> 2’ contains the number (and percentage) of RSRZ outliers, followed by percent RSRZ outliers for the chain as percentile scores relative to all X-ray entries and entries of similar resolution. The OWAB column contains the minimum, median, 95<sup>th</sup> percentile and maximum values of the occupancy-weighted average B-factor per residue. The column labelled ‘Q< 0.9’ lists the number of (and percentage) of residues with an average occupancy less than 0.9.

Mol	Chain	Analysed	<RSRZ>	#RSRZ>2	OWAB(Å <sup>2</sup> )	Q<0.9
1	A	149/183 (81%)	-0.22	3 (2%) 65 73	14, 21, 44, 57	21 (14%)
1	B	149/183 (81%)	-0.19	5 (3%) 45 55	14, 21, 47, 60	18 (12%)
All	All	298/366 (81%)	-0.21	8 (2%) 54 63	14, 22, 48, 60	39 (13%)

All (8) RSRZ outliers are listed below:

Mol	Chain	Res	Type	RSRZ
1	A	143	TYR	5.5
1	A	209	GLN	3.1
1	B	148	GLN	2.7
1	B	209	GLN	2.4
1	A	145	PRO	2.3
1	B	194	TYR	2.2
1	B	143	TYR	2.1
1	B	145	PRO	2.1

### 6.2 Non-standard residues in protein, DNA, RNA chains [i](#)

There are no non-standard protein/DNA/RNA residues in this entry.

### 6.3 Carbohydrates [i](#)

There are no carbohydrates in this entry.

### 6.4 Ligands [i](#)

In the following table, the Atoms column lists the number of modelled atoms in the group and the number defined in the chemical component dictionary. The B-factors column lists the minimum,

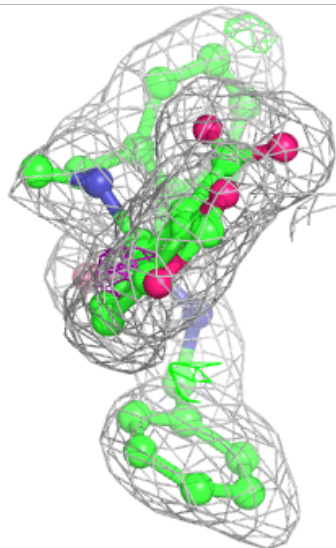
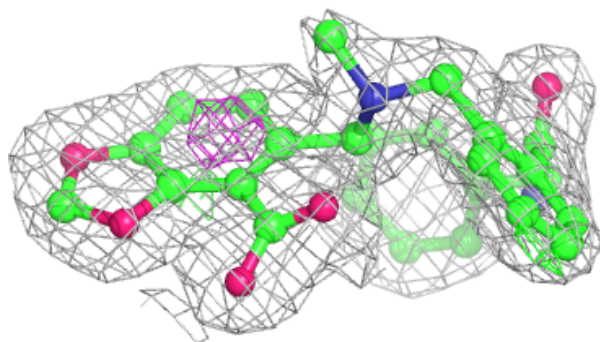
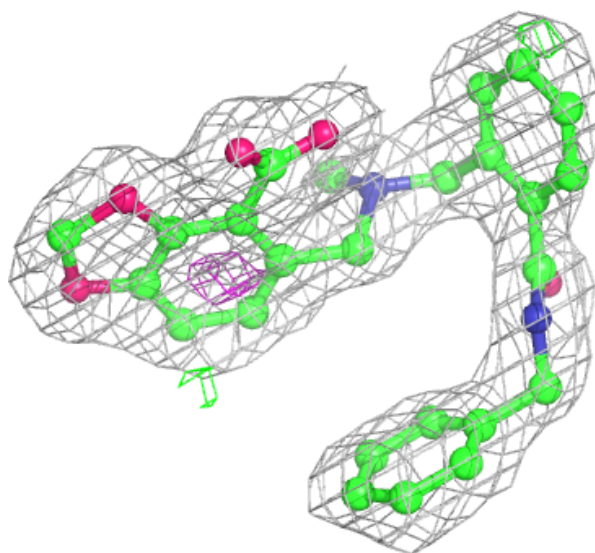
median, 95<sup>th</sup> percentile and maximum values of B factors of atoms in the group. The column labelled 'Q< 0.9' lists the number of atoms with occupancy less than 0.9.

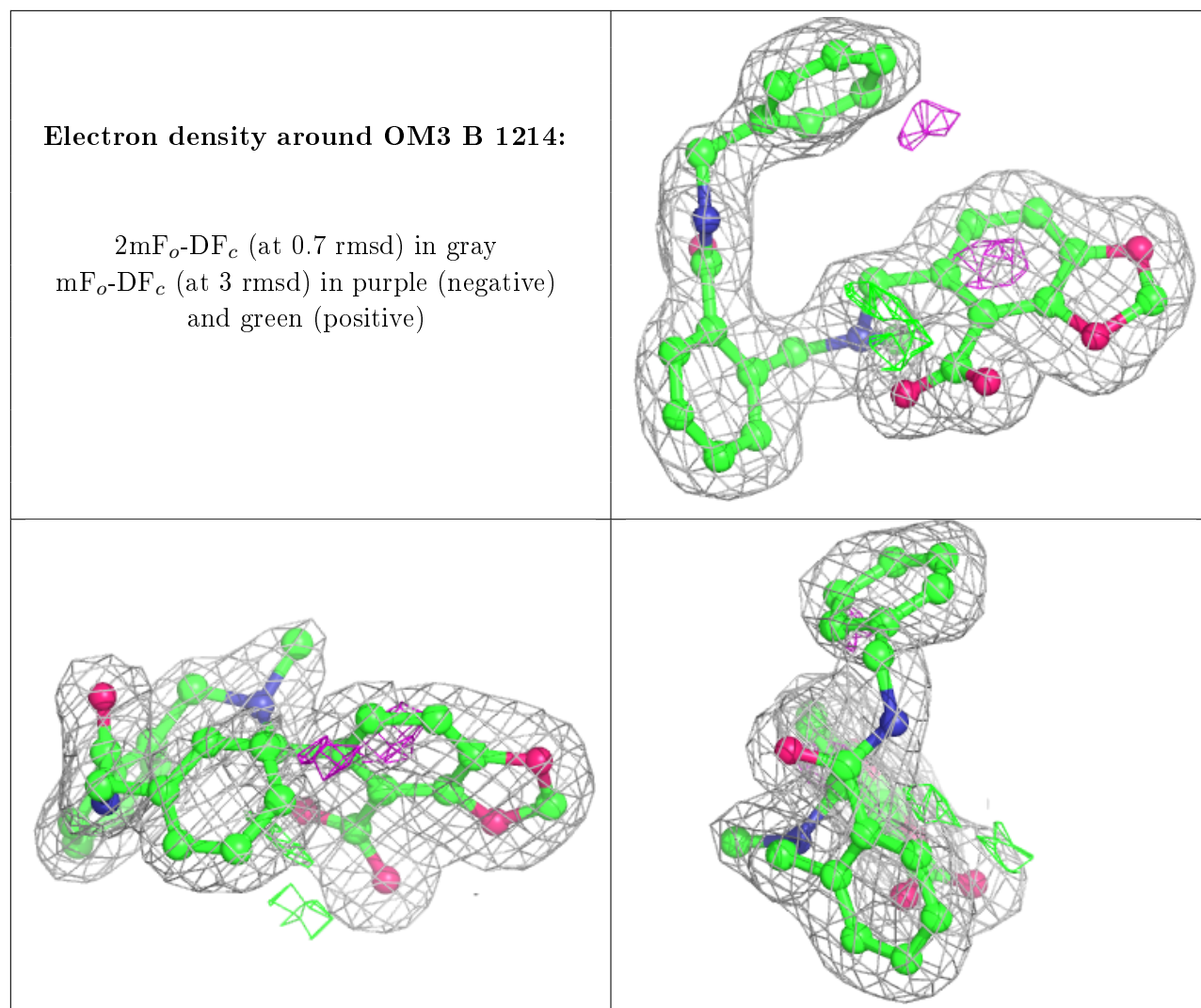
Mol	Type	Chain	Res	Atoms	RSCC	RSR	B-factors(Å <sup>2</sup> )	Q<0.9
3	ACT	B	1213	4/4	0.88	0.16	45,46,46,47	0
4	OM3	A	1217	32/32	0.93	0.13	18,32,35,36	0
4	OM3	B	1214	32/32	0.94	0.12	17,31,36,37	0
3	ACT	A	1213	4/4	0.94	0.11	41,41,41,41	0
3	ACT	A	1216	4/4	0.94	0.10	25,27,27,28	0
2	SO4	A	1212	5/5	0.95	0.11	29,34,35,36	5
2	SO4	B	1212	5/5	0.95	0.10	26,32,34,35	5
3	ACT	A	1214	4/4	0.96	0.10	27,28,29,29	0
3	ACT	A	1215	4/4	0.97	0.11	37,38,39,39	0
2	SO4	A	1210	5/5	0.97	0.11	31,31,33,36	5
2	SO4	B	1211	5/5	0.98	0.09	24,29,32,33	5
2	SO4	A	1211	5/5	0.98	0.12	20,24,26,29	5
2	SO4	B	1210	5/5	0.98	0.11	29,30,32,33	5

The following is a graphical depiction of the model fit to experimental electron density of all instances of the Ligand of Interest. In addition, ligands with molecular weight > 250 and outliers as shown on the geometry validation Tables will also be included. Each fit is shown from different orientation to approximate a three-dimensional view.

**Electron density around OM3 A 1217:**

$2mF_o-DF_c$  (at 0.7 rmsd) in gray  
 $mF_o-DF_c$  (at 3 rmsd) in purple (negative)  
and green (positive)





## 6.5 Other polymers [i](#)

There are no such residues in this entry.