



wwPDB X-ray Structure Validation Summary Report ⓘ

May 15, 2020 – 10:25 pm BST

PDB ID : 5CF4
Title : CRYSTAL STRUCTURE OF JANUS KINASE 2 IN COMPLEX WITH N,N-DICYCLOPROPYL-10-ETHYL-7-[(3-METHOXYPROPYL)AMINO]-3-METHYL-3,5,8,10-TETRAAZATRICYCLO[7.3.0.0.6] DODECA-1(9),2(6),4,7,11-PENTAENE-11-CARBOXAMIDE
Authors : Sack, J.S.
Deposited on : 2015-07-08
Resolution : 2.38 Å(reported)

This is a wwPDB X-ray Structure Validation Summary Report for a publicly released PDB entry.

We welcome your comments at validation@mail.wwpdb.org

A user guide is available at

<https://www.wwpdb.org/validation/2017/XrayValidationReportHelp>

with specific help available everywhere you see the ⓘ symbol.

The following versions of software and data (see [references ⓘ](#)) were used in the production of this report:

MolProbity : 4.02b-467
Mogul : 1.8.5 (274361), CSD as541be (2020)
Xtriage (Phenix) : 1.13
EDS : 2.11
buster-report : 1.1.7 (2018)
Percentile statistics : 20191225.v01 (using entries in the PDB archive December 25th 2019)
Refmac : 5.8.0158
CCP4 : 7.0.044 (Gargrove)
Ideal geometry (proteins) : Engh & Huber (2001)
Ideal geometry (DNA, RNA) : Parkinson et al. (1996)
Validation Pipeline (wwPDB-VP) : 2.11

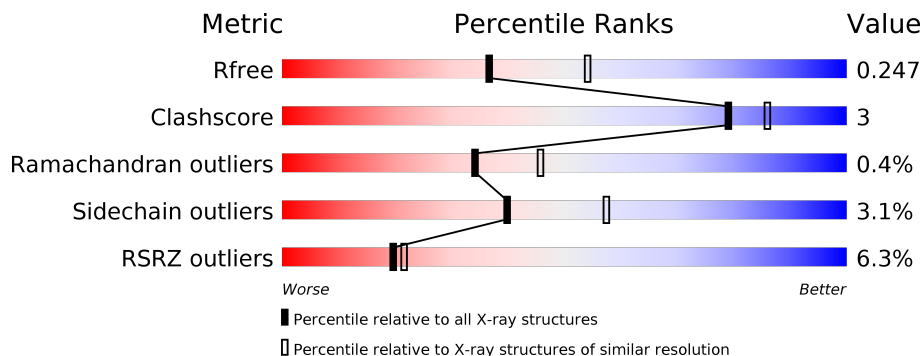
1 Overall quality at a glance

The following experimental techniques were used to determine the structure:

X-RAY DIFFRACTION

The reported resolution of this entry is 2.38 Å.

Percentile scores (ranging between 0-100) for global validation metrics of the entry are shown in the following graphic. The table shows the number of entries on which the scores are based.



Metric	Whole archive (#Entries)	Similar resolution (#Entries, resolution range(Å))
R_{free}	130704	5509 (2.40-2.36)
Clashscore	141614	6082 (2.40-2.36)
Ramachandran outliers	138981	5973 (2.40-2.36)
Sidechain outliers	138945	5975 (2.40-2.36)
RSRZ outliers	127900	5397 (2.40-2.36)

The table below summarises the geometric issues observed across the polymeric chains and their fit to the electron density. The red, orange, yellow and green segments on the lower bar indicate the fraction of residues that contain outliers for ≥ 3 , 2, 1 and 0 types of geometric quality criteria respectively. A grey segment represents the fraction of residues that are not modelled. The numeric value for each fraction is indicated below the corresponding segment, with a dot representing fractions $\leq 5\%$. The upper red bar (where present) indicates the fraction of residues that have poor fit to the electron density. The numeric value is given above the bar.

Mol	Chain	Length	Quality of chain
1	A	321	 7% 83% 5% • 11%
1	B	321	 4% 80% 11% 9%

2 Entry composition [i](#)

There are 3 unique types of molecules in this entry. The entry contains 5049 atoms, of which 0 are hydrogens and 0 are deuteriums.

In the tables below, the ZeroOcc column contains the number of atoms modelled with zero occupancy, the AltConf column contains the number of residues with at least one atom in alternate conformation and the Trace column contains the number of residues modelled with at most 2 atoms.

- Molecule 1 is a protein called Tyrosine-protein kinase JAK2.

Mol	Chain	Residues	Atoms						ZeroOcc	AltConf	Trace
			Total	C	N	O	P	S			
1	A	285	Total	C	N	O	P	S	0	0	0
			2353	1496	406	435	2	14			
1	B	293	Total	C	N	O	P	S	0	0	0
			2387	1514	411	446	2	14			

There are 54 discrepancies between the modelled and reference sequences:

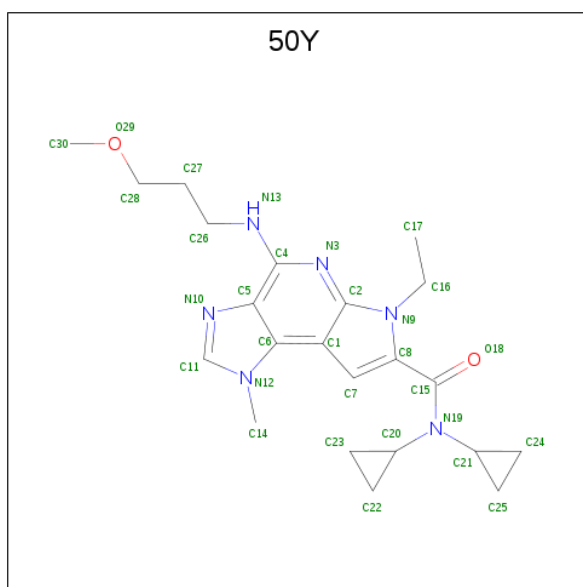
Chain	Residue	Modelled	Actual	Comment	Reference
A	818	MET	-	initiating methionine	UNP O60674
A	819	GLY	-	expression tag	UNP O60674
A	820	SER	-	expression tag	UNP O60674
A	821	SER	-	expression tag	UNP O60674
A	822	HIS	-	expression tag	UNP O60674
A	823	HIS	-	expression tag	UNP O60674
A	824	HIS	-	expression tag	UNP O60674
A	825	HIS	-	expression tag	UNP O60674
A	826	HIS	-	expression tag	UNP O60674
A	827	HIS	-	expression tag	UNP O60674
A	828	SER	-	expression tag	UNP O60674
A	829	SER	-	expression tag	UNP O60674
A	830	GLY	-	expression tag	UNP O60674
A	831	LEU	-	expression tag	UNP O60674
A	832	VAL	-	expression tag	UNP O60674
A	833	PRO	-	expression tag	UNP O60674
A	834	ARG	-	expression tag	UNP O60674
A	835	GLY	-	expression tag	UNP O60674
A	836	SER	-	expression tag	UNP O60674
A	837	HIS	-	expression tag	UNP O60674
A	838	MET	-	expression tag	UNP O60674
A	1133	HIS	-	expression tag	UNP O60674
A	1134	HIS	-	expression tag	UNP O60674
A	1135	HIS	-	expression tag	UNP O60674
A	1136	HIS	-	expression tag	UNP O60674

Continued on next page...

Continued from previous page...

Chain	Residue	Modelled	Actual	Comment	Reference
A	1137	HIS	-	expression tag	UNP O60674
A	1138	HIS	-	expression tag	UNP O60674
B	818	MET	-	initiating methionine	UNP O60674
B	819	GLY	-	expression tag	UNP O60674
B	820	SER	-	expression tag	UNP O60674
B	821	SER	-	expression tag	UNP O60674
B	822	HIS	-	expression tag	UNP O60674
B	823	HIS	-	expression tag	UNP O60674
B	824	HIS	-	expression tag	UNP O60674
B	825	HIS	-	expression tag	UNP O60674
B	826	HIS	-	expression tag	UNP O60674
B	827	HIS	-	expression tag	UNP O60674
B	828	SER	-	expression tag	UNP O60674
B	829	SER	-	expression tag	UNP O60674
B	830	GLY	-	expression tag	UNP O60674
B	831	LEU	-	expression tag	UNP O60674
B	832	VAL	-	expression tag	UNP O60674
B	833	PRO	-	expression tag	UNP O60674
B	834	ARG	-	expression tag	UNP O60674
B	835	GLY	-	expression tag	UNP O60674
B	836	SER	-	expression tag	UNP O60674
B	837	HIS	-	expression tag	UNP O60674
B	838	MET	-	expression tag	UNP O60674
B	1133	HIS	-	expression tag	UNP O60674
B	1134	HIS	-	expression tag	UNP O60674
B	1135	HIS	-	expression tag	UNP O60674
B	1136	HIS	-	expression tag	UNP O60674
B	1137	HIS	-	expression tag	UNP O60674
B	1138	HIS	-	expression tag	UNP O60674

- Molecule 2 is N,N-dicyclopropyl-6-ethyl-4-[(3-methoxypropyl)amino]-1-methyl-1,6-dihydroimidazo[4,5-d]pyrrolo[2,3-b]pyridine-7-carboxamide (three-letter code: 50Y) (formula: C₂₂H₃₀N₆O₂).



Mol	Chain	Residues	Atoms				ZeroOcc	AltConf
2	A	1	Total	C	N	O	0	0
			30	22	6	2		
2	B	1	Total	C	N	O	0	0
			30	22	6	2		

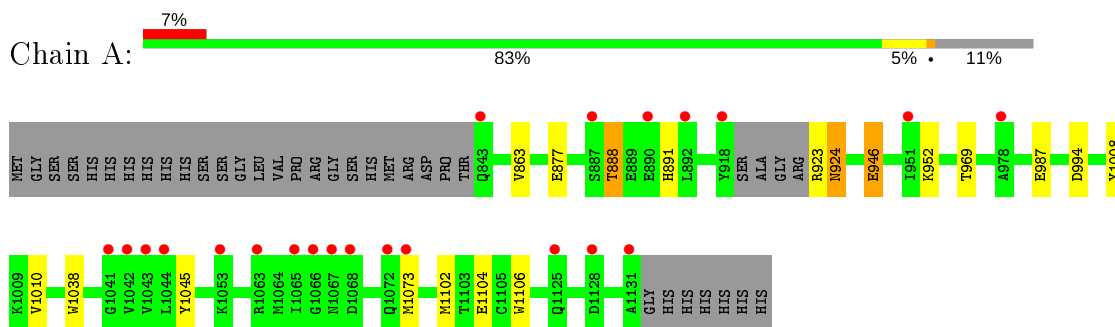
- Molecule 3 is water.

Mol	Chain	Residues	Atoms		ZeroOcc	AltConf
3	A	144	Total	O	0	0
			144	144		
3	B	105	Total	O	0	0
			105	105		

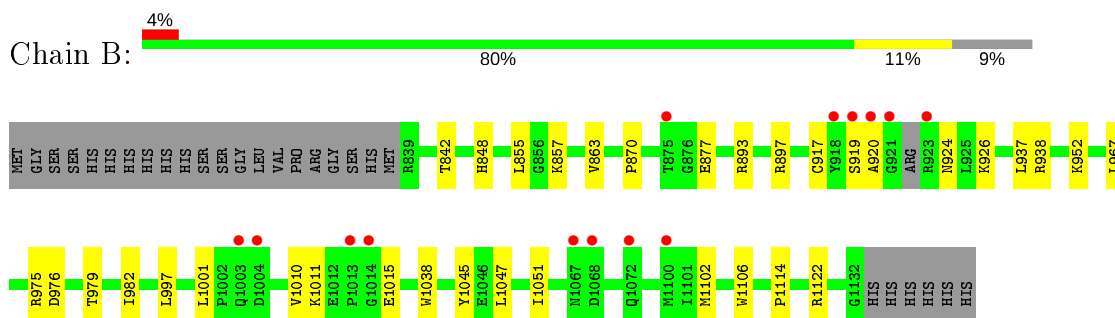
3 Residue-property plots

These plots are drawn for all protein, RNA and DNA chains in the entry. The first graphic for a chain summarises the proportions of the various outlier classes displayed in the second graphic. The second graphic shows the sequence view annotated by issues in geometry and electron density. Residues are color-coded according to the number of geometric quality criteria for which they contain at least one outlier: green = 0, yellow = 1, orange = 2 and red = 3 or more. A red dot above a residue indicates a poor fit to the electron density ($RSRZ > 2$). Stretches of 2 or more consecutive residues without any outlier are shown as a green connector. Residues present in the sample, but not in the model, are shown in grey.

- Molecule 1: Tyrosine-protein kinase JAK2



- Molecule 1: Tyrosine-protein kinase JAK2



4 Data and refinement statistics

Property	Value	Source
Space group	P 41	Depositor
Cell constants a, b, c, α , β , γ	112.46Å 112.46Å 70.50Å 90.00° 90.00° 90.00°	Depositor
Resolution (Å)	33.10 – 2.38 33.10 – 2.38	Depositor EDS
% Data completeness (in resolution range)	98.4 (33.10-2.38) 98.4 (33.10-2.38)	Depositor EDS
R_{merge}	0.14	Depositor
R_{sym}	(Not available)	Depositor
$\langle I/\sigma(I) \rangle$ ¹	3.34 (at 2.39Å)	Xtrriage
Refinement program	BUSTER 2.11.6	Depositor
R, R_{free}	0.252 , 0.253 0.244 , 0.247	Depositor DCC
R_{free} test set	764 reflections (2.19%)	wwPDB-VP
Wilson B-factor (Å ²)	31.7	Xtrriage
Anisotropy	0.273	Xtrriage
Bulk solvent k_{sol} (e/Å ³), B_{sol} (Å ²)	0.33 , 37.2	EDS
L-test for twinning ²	$\langle L \rangle = 0.50$, $\langle L^2 \rangle = 0.34$	Xtrriage
Estimated twinning fraction	0.048 for h,-k,-l	Xtrriage
F_o, F_c correlation	0.91	EDS
Total number of atoms	5049	wwPDB-VP
Average B, all atoms (Å ²)	34.0	wwPDB-VP

Xtrriage's analysis on translational NCS is as follows: *The largest off-origin peak in the Patterson function is 3.18% of the height of the origin peak. No significant pseudotranslation is detected.*

¹Intensities estimated from amplitudes.

²Theoretical values of $\langle |L| \rangle$, $\langle L^2 \rangle$ for acentric reflections are 0.5, 0.333 respectively for untwinned datasets, and 0.375, 0.2 for perfectly twinned datasets.

5 Model quality [i](#)

5.1 Standard geometry [i](#)

Bond lengths and bond angles in the following residue types are not validated in this section: PTR, 50Y

The Z score for a bond length (or angle) is the number of standard deviations the observed value is removed from the expected value. A bond length (or angle) with $|Z| > 5$ is considered an outlier worth inspection. RMSZ is the root-mean-square of all Z scores of the bond lengths (or angles).

Mol	Chain	Bond lengths		Bond angles	
		RMSZ	# Z >5	RMSZ	# Z >5
1	A	0.50	0/2369	0.70	0/3188
1	B	0.50	0/2404	0.69	0/3239
All	All	0.50	0/4773	0.70	0/6427

There are no bond length outliers.

There are no bond angle outliers.

There are no chirality outliers.

There are no planarity outliers.

5.2 Too-close contacts [i](#)

In the following table, the Non-H and H(model) columns list the number of non-hydrogen atoms and hydrogen atoms in the chain respectively. The H(added) column lists the number of hydrogen atoms added and optimized by MolProbity. The Clashes column lists the number of clashes within the asymmetric unit, whereas Symm-Clashes lists symmetry related clashes.

Mol	Chain	Non-H	H(model)	H(added)	Clashes	Symm-Clashes
1	A	2353	0	2315	10	0
1	B	2387	0	2327	14	0
2	A	30	0	30	5	0
2	B	30	0	30	2	0
3	A	144	0	0	1	0
3	B	105	0	0	0	0
All	All	5049	0	4702	27	0

The all-atom clashscore is defined as the number of clashes found per 1000 atoms (including hydrogen atoms). The all-atom clashscore for this structure is 3.

The worst 5 of 27 close contacts within the same asymmetric unit are listed below, sorted by their

clash magnitude.

Atom-1	Atom-2	Interatomic distance (Å)	Clash overlap (Å)
2:A:4000:50Y:C7	2:A:4000:50Y:H11	2.03	0.89
2:A:4000:50Y:H17	2:A:4000:50Y:H11	1.74	0.68
1:B:863:VAL:HG23	2:B:4000:50Y:H13	1.76	0.68
1:A:863:VAL:HG23	2:A:4000:50Y:H13	1.75	0.67
1:A:888:THR:HG22	1:A:891:HIS:H	1.62	0.63

There are no symmetry-related clashes.

5.3 Torsion angles [i](#)

5.3.1 Protein backbone [i](#)

In the following table, the Percentiles column shows the percent Ramachandran outliers of the chain as a percentile score with respect to all X-ray entries followed by that with respect to entries of similar resolution.

The Analysed column shows the number of residues for which the backbone conformation was analysed, and the total number of residues.

Mol	Chain	Analysed	Favoured	Allowed	Outliers	Percentiles	
1	A	279/321 (87%)	273 (98%)	6 (2%)	0	100	100
1	B	287/321 (89%)	278 (97%)	7 (2%)	2 (1%)	22	30
All	All	566/642 (88%)	551 (97%)	13 (2%)	2 (0%)	34	46

All (2) Ramachandran outliers are listed below:

Mol	Chain	Res	Type
1	B	1015	GLU
1	B	920	ALA

5.3.2 Protein sidechains [i](#)

In the following table, the Percentiles column shows the percent sidechain outliers of the chain as a percentile score with respect to all X-ray entries followed by that with respect to entries of similar resolution.

The Analysed column shows the number of residues for which the sidechain conformation was analysed, and the total number of residues.

Mol	Chain	Analysed	Rotameric	Outliers	Percentiles	
1	A	255/290 (88%)	248 (97%)	7 (3%)	44	62
1	B	256/290 (88%)	247 (96%)	9 (4%)	36	52
All	All	511/580 (88%)	495 (97%)	16 (3%)	40	57

5 of 16 residues with a non-rotameric sidechain are listed below:

Mol	Chain	Res	Type
1	B	842	THR
1	B	857	LYS
1	B	967	LEU
1	A	1104	GLU
1	B	1001	LEU

Some sidechains can be flipped to improve hydrogen bonding and reduce clashes. There are no such sidechains identified.

5.3.3 RNA [i](#)

There are no RNA molecules in this entry.

5.4 Non-standard residues in protein, DNA, RNA chains [i](#)

4 non-standard protein/DNA/RNA residues are modelled in this entry.

In the following table, the Counts columns list the number of bonds (or angles) for which Mogul statistics could be retrieved, the number of bonds (or angles) that are observed in the model and the number of bonds (or angles) that are defined in the Chemical Component Dictionary. The Link column lists molecule types, if any, to which the group is linked. The Z score for a bond length (or angle) is the number of standard deviations the observed value is removed from the expected value. A bond length (or angle) with $|Z| > 2$ is considered an outlier worth inspection. RMSZ is the root-mean-square of all Z scores of the bond lengths (or angles).

Mol	Type	Chain	Res	Link	Bond lengths			Bond angles		
					Counts	RMSZ	$\# Z > 2$	Counts	RMSZ	$\# Z > 2$
1	PTR	A	1008	1	15,16,17	1.67	2 (13%)	19,22,24	1.97	5 (26%)
1	PTR	A	1007	1	15,16,17	1.34	2 (13%)	19,22,24	1.06	1 (5%)
1	PTR	B	1007	1	15,16,17	1.36	2 (13%)	19,22,24	1.01	1 (5%)
1	PTR	B	1008	1	15,16,17	1.51	3 (20%)	19,22,24	1.88	6 (31%)

In the following table, the Chirals column lists the number of chiral outliers, the number of chiral centers analysed, the number of these observed in the model and the number defined in the

Chemical Component Dictionary. Similar counts are reported in the Torsion and Rings columns. '-' means no outliers of that kind were identified.

Mol	Type	Chain	Res	Link	Chirals	Torsions	Rings
1	PTR	A	1008	1	-	1/10/11/13	0/1/1/1
1	PTR	A	1007	1	-	0/10/11/13	0/1/1/1
1	PTR	B	1007	1	-	0/10/11/13	0/1/1/1
1	PTR	B	1008	1	-	2/10/11/13	0/1/1/1

The worst 5 of 9 bond length outliers are listed below:

Mol	Chain	Res	Type	Atoms	Z	Observed(Å)	Ideal(Å)
1	A	1008	PTR	CE2-CZ	3.78	1.46	1.38
1	A	1008	PTR	P-OH	-3.62	1.53	1.59
1	B	1008	PTR	CE1-CZ	3.00	1.44	1.38
1	B	1008	PTR	P-OH	-2.80	1.54	1.59
1	A	1007	PTR	CE1-CZ	2.71	1.44	1.38

The worst 5 of 13 bond angle outliers are listed below:

Mol	Chain	Res	Type	Atoms	Z	Observed(°)	Ideal(°)
1	A	1008	PTR	OH-CZ-CE2	4.62	132.97	119.23
1	A	1008	PTR	OH-CZ-CE1	-4.04	107.21	119.23
1	B	1008	PTR	OH-CZ-CE1	3.58	129.88	119.23
1	B	1008	PTR	CB-CG-CD2	-3.42	114.12	120.91
1	B	1008	PTR	O3P-P-OH	3.40	115.87	105.24

There are no chirality outliers.

All (3) torsion outliers are listed below:

Mol	Chain	Res	Type	Atoms
1	B	1008	PTR	CZ-OH-P-O1P
1	B	1008	PTR	CZ-OH-P-O2P
1	A	1008	PTR	CE1-CZ-OH-P

There are no ring outliers.

1 monomer is involved in 1 short contact:

Mol	Chain	Res	Type	Clashes	Symm-Clashes
1	A	1008	PTR	1	0

5.5 Carbohydrates [i](#)

There are no carbohydrates in this entry.

5.6 Ligand geometry [i](#)

2 ligands are modelled in this entry.

In the following table, the Counts columns list the number of bonds (or angles) for which Mogul statistics could be retrieved, the number of bonds (or angles) that are observed in the model and the number of bonds (or angles) that are defined in the Chemical Component Dictionary. The Link column lists molecule types, if any, to which the group is linked. The Z score for a bond length (or angle) is the number of standard deviations the observed value is removed from the expected value. A bond length (or angle) with $|Z| > 2$ is considered an outlier worth inspection. RMSZ is the root-mean-square of all Z scores of the bond lengths (or angles).

Mol	Type	Chain	Res	Link	Bond lengths			Bond angles		
					Counts	RMSZ	# Z > 2	Counts	RMSZ	# Z > 2
2	50Y	B	4000	-	28,34,34	0.85	0	27,50,50	0.90	2 (7%)
2	50Y	A	4000	-	28,34,34	0.77	0	27,50,50	1.00	2 (7%)

In the following table, the Chirals column lists the number of chiral outliers, the number of chiral centers analysed, the number of these observed in the model and the number defined in the Chemical Component Dictionary. Similar counts are reported in the Torsion and Rings columns. '-' means no outliers of that kind were identified.

Mol	Type	Chain	Res	Link	Chirals	Torsions	Rings
2	50Y	B	4000	-	-	3/21/28/28	0/5/5/5
2	50Y	A	4000	-	-	4/21/28/28	0/5/5/5

There are no bond length outliers.

All (4) bond angle outliers are listed below:

Mol	Chain	Res	Type	Atoms	Z	Observed(°)	Ideal(°)
2	A	4000	50Y	C17-C16-N9	2.76	116.15	111.49
2	A	4000	50Y	C16-N9-C8	2.32	128.46	124.36
2	B	4000	50Y	C16-N9-C8	2.11	128.09	124.36
2	B	4000	50Y	C17-C16-N9	2.01	114.88	111.49

There are no chirality outliers.

5 of 7 torsion outliers are listed below:

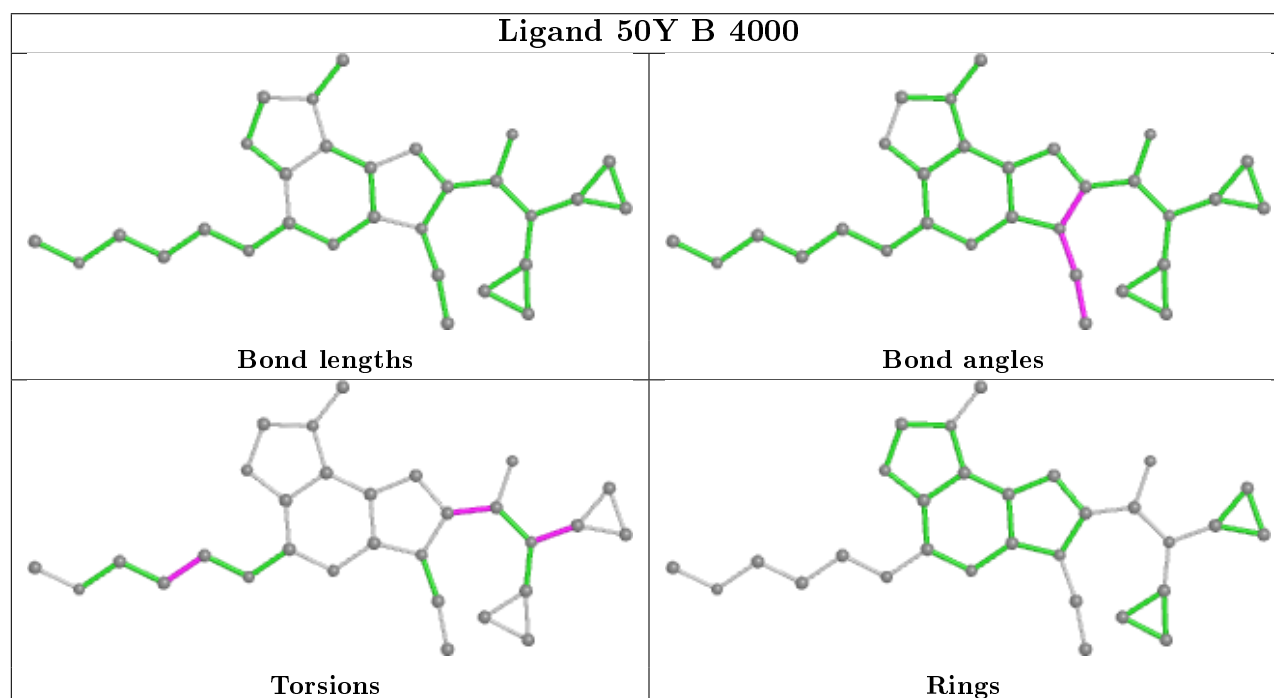
Mol	Chain	Res	Type	Atoms
2	A	4000	50Y	C23-C20-N19-C15
2	B	4000	50Y	O18-C15-C8-C7
2	A	4000	50Y	O18-C15-C8-C7
2	B	4000	50Y	C23-C20-N19-C15
2	A	4000	50Y	C22-C20-N19-C15

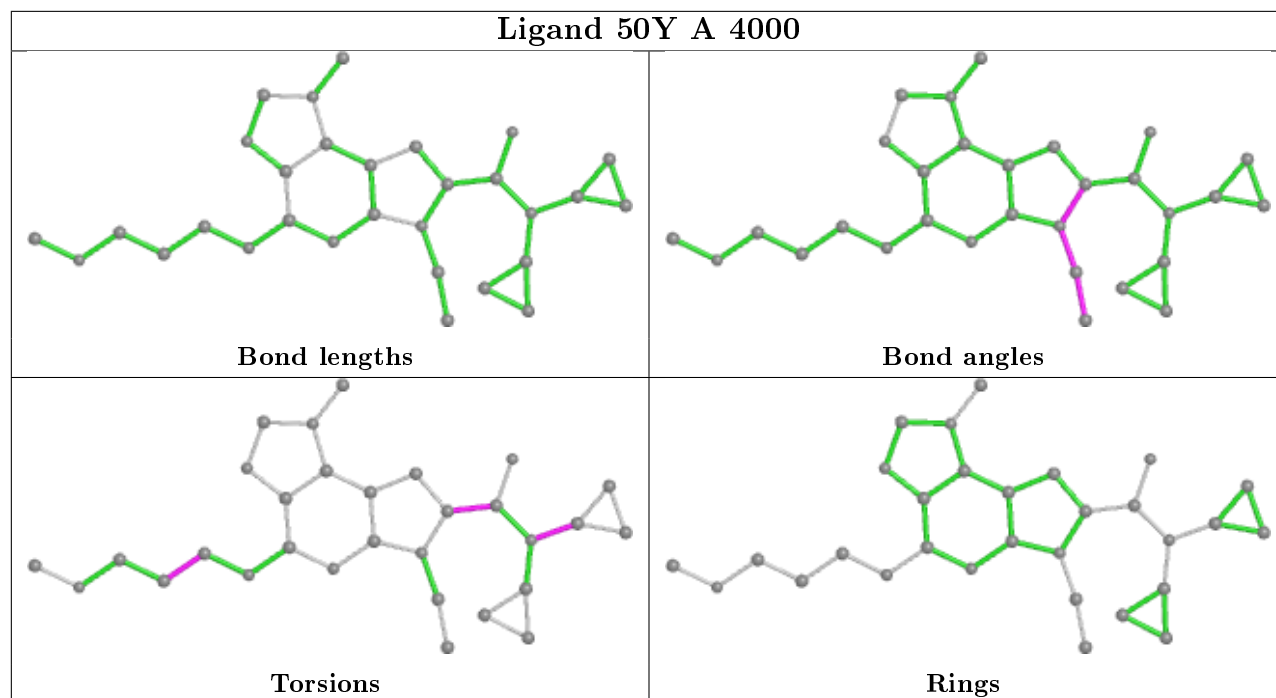
There are no ring outliers.

2 monomers are involved in 7 short contacts:

Mol	Chain	Res	Type	Clashes	Symm-Clashes
2	B	4000	50Y	2	0
2	A	4000	50Y	5	0

The following is a two-dimensional graphical depiction of Mogul quality analysis of bond lengths, bond angles, torsion angles, and ring geometry for all instances of the Ligand of Interest. In addition, ligands with molecular weight > 250 and outliers as shown on the validation Tables will also be included. For torsion angles, if less than 5% of the Mogul distribution of torsion angles is within 10 degrees of the torsion angle in question, then that torsion angle is considered an outlier. Any bond that is central to one or more torsion angles identified as an outlier by Mogul will be highlighted in the graph. For rings, the root-mean-square deviation (RMSD) between the ring in question and similar rings identified by Mogul is calculated over all ring torsion angles. If the average RMSD is greater than 60 degrees and the minimal RMSD between the ring in question and any Mogul-identified rings is also greater than 60 degrees, then that ring is considered an outlier. The outliers are highlighted in purple. The color gray indicates Mogul did not find sufficient equivalents in the CSD to analyse the geometry.





5.7 Other polymers [i](#)

There are no such residues in this entry.

5.8 Polymer linkage issues [i](#)

There are no chain breaks in this entry.

6 Fit of model and data [i](#)

6.1 Protein, DNA and RNA chains [i](#)

In the following table, the column labelled ‘#RSRZ> 2’ contains the number (and percentage) of RSRZ outliers, followed by percent RSRZ outliers for the chain as percentile scores relative to all X-ray entries and entries of similar resolution. The OWAB column contains the minimum, median, 95th percentile and maximum values of the occupancy-weighted average B-factor per residue. The column labelled ‘Q< 0.9’ lists the number of (and percentage) of residues with an average occupancy less than 0.9.

Mol	Chain	Analysed	<RSRZ>	#RSRZ>2	OWAB(Å ²)	Q<0.9
1	A	283/321 (88%)	0.35	22 (7%) 13 14	17, 30, 60, 88	0
1	B	291/321 (90%)	0.22	14 (4%) 30 33	14, 31, 62, 95	0
All	All	574/642 (89%)	0.29	36 (6%) 20 21	14, 31, 61, 95	0

The worst 5 of 36 RSRZ outliers are listed below:

Mol	Chain	Res	Type	RSRZ
1	B	1013	PRO	5.9
1	B	921	GLY	4.5
1	A	1068	ASP	4.5
1	B	923	ARG	4.1
1	B	1014	GLY	4.1

6.2 Non-standard residues in protein, DNA, RNA chains [i](#)

In the following table, the Atoms column lists the number of modelled atoms in the group and the number defined in the chemical component dictionary. The B-factors column lists the minimum, median, 95th percentile and maximum values of B factors of atoms in the group. The column labelled ‘Q< 0.9’ lists the number of atoms with occupancy less than 0.9.

Mol	Type	Chain	Res	Atoms	RSCC	RSR	B-factors(Å ²)	Q<0.9
1	PTR	B	1008	16/17	0.82	0.18	49,59,70,70	0
1	PTR	B	1007	16/17	0.84	0.17	50,56,68,69	0
1	PTR	A	1008	16/17	0.89	0.17	31,45,59,59	0
1	PTR	A	1007	16/17	0.89	0.17	35,39,50,51	0

6.3 Carbohydrates [i](#)

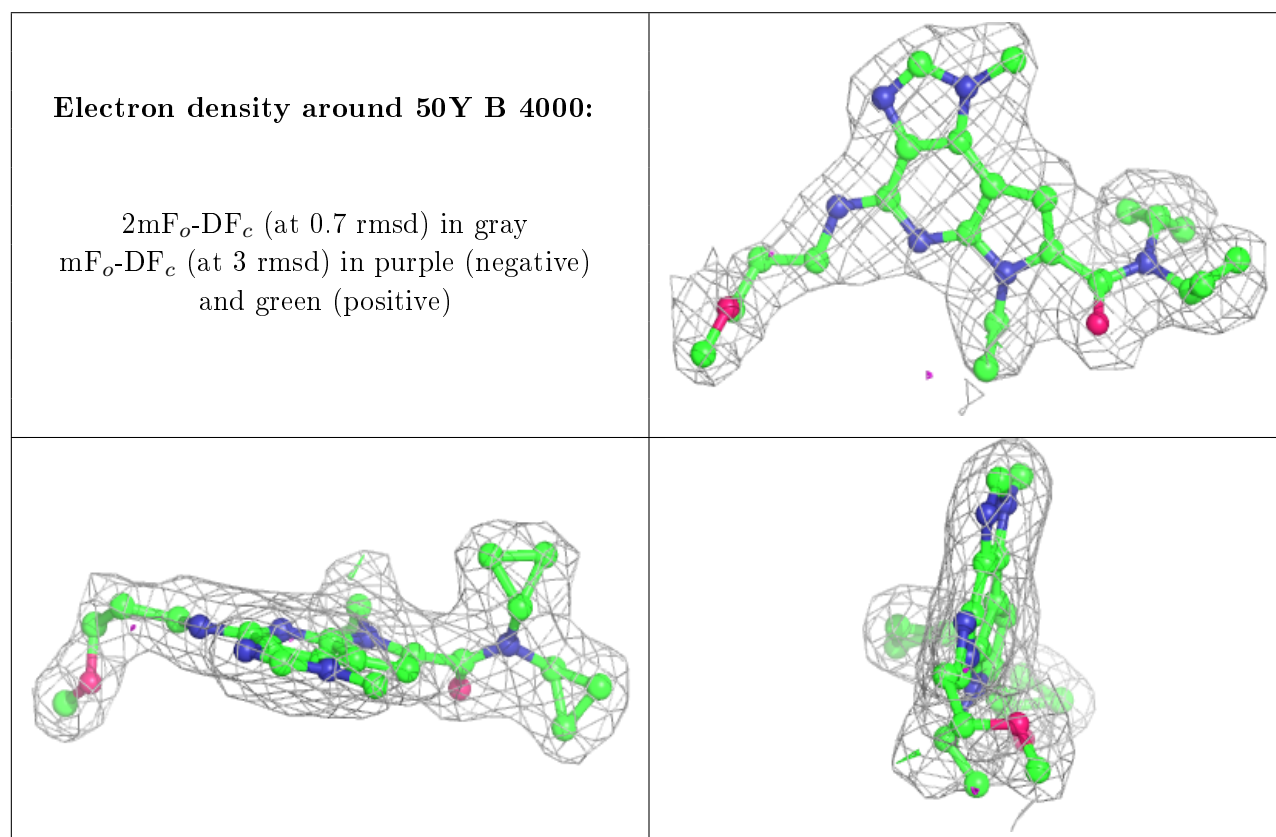
There are no carbohydrates in this entry.

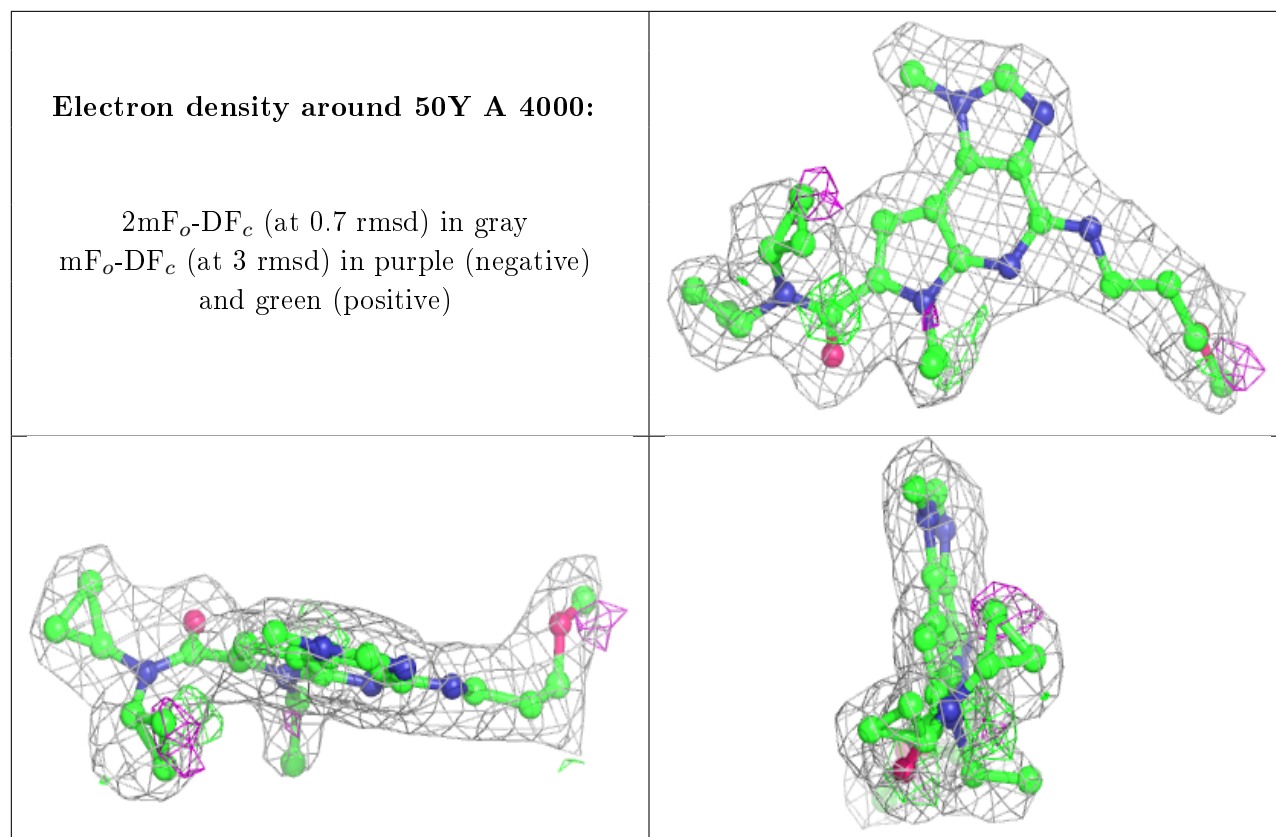
6.4 Ligands [i](#)

In the following table, the Atoms column lists the number of modelled atoms in the group and the number defined in the chemical component dictionary. The B-factors column lists the minimum, median, 95th percentile and maximum values of B factors of atoms in the group. The column labelled 'Q<0.9' lists the number of atoms with occupancy less than 0.9.

Mol	Type	Chain	Res	Atoms	RSCC	RSR	B-factors(Å ²)	Q<0.9
2	50Y	B	4000	30/30	0.94	0.14	19,23,35,36	0
2	50Y	A	4000	30/30	0.95	0.13	12,21,28,33	0

The following is a graphical depiction of the model fit to experimental electron density of all instances of the Ligand of Interest. In addition, ligands with molecular weight > 250 and outliers as shown on the geometry validation Tables will also be included. Each fit is shown from different orientation to approximate a three-dimensional view.





6.5 Other polymers [i](#)

There are no such residues in this entry.