



# Full wwPDB X-ray Structure Validation Report ⓘ

Dec 16, 2023 – 01:49 pm GMT

PDB ID : 4CGZ  
Title : Crystal structure of the Bloom's syndrome helicase BLM in complex with DNA  
Authors : Newman, J.A.; Savitsky, P.; Krojer, T.; von Delft, F.; Arrowsmith, C.H.;  
Edwards, A.; Bountra, C.; Gileadi, O.  
Deposited on : 2013-11-27  
Resolution : 3.20 Å(reported)

This is a Full wwPDB X-ray Structure Validation Report for a publicly released PDB entry.

We welcome your comments at [validation@mail.wwpdb.org](mailto:validation@mail.wwpdb.org)

A user guide is available at

<https://www.wwpdb.org/validation/2017/XrayValidationReportHelp>

with specific help available everywhere you see the ⓘ symbol.

The types of validation reports are described at

<http://www.wwpdb.org/validation/2017/FAQs#types>.

---

The following versions of software and data (see [references ⓘ](#)) were used in the production of this report:

MolProbity : 4.02b-467  
Mogul : 1.8.4, CSD as541be (2020)  
Xtriage (Phenix) : 1.13  
EDS : 2.36  
buster-report : 1.1.7 (2018)  
Percentile statistics : 20191225.v01 (using entries in the PDB archive December 25th 2019)  
Refmac : 5.8.0158  
CCP4 : 7.0.044 (Gargrove)  
Ideal geometry (proteins) : Engh & Huber (2001)  
Ideal geometry (DNA, RNA) : Parkinson et al. (1996)  
Validation Pipeline (wwPDB-VP) : 2.36

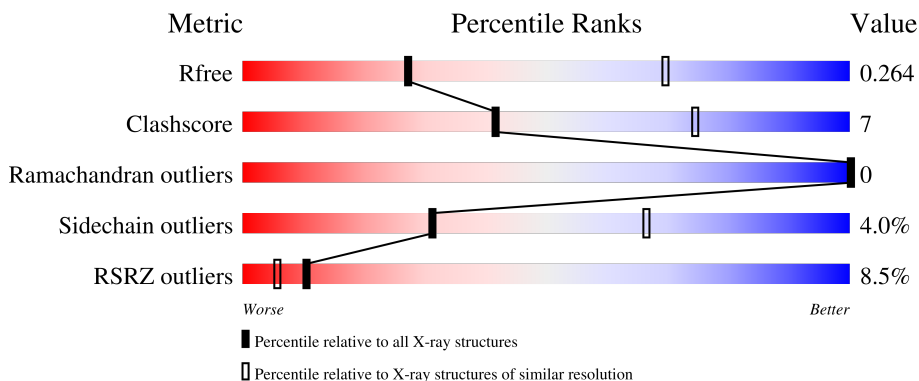
# 1 Overall quality at a glance

The following experimental techniques were used to determine the structure:

*X-RAY DIFFRACTION*




The reported resolution of this entry is 3.20 Å.

Percentile scores (ranging between 0-100) for global validation metrics of the entry are shown in the following graphic. The table shows the number of entries on which the scores are based.



Metric	Whole archive (#Entries)	Similar resolution (#Entries, resolution range(Å))
$R_{free}$	130704	1133 (3.20-3.20)
Clashscore	141614	1253 (3.20-3.20)
Ramachandran outliers	138981	1234 (3.20-3.20)
Sidechain outliers	138945	1233 (3.20-3.20)
RSRZ outliers	127900	1095 (3.20-3.20)

The table below summarises the geometric issues observed across the polymeric chains and their fit to the electron density. The red, orange, yellow and green segments of the lower bar indicate the fraction of residues that contain outliers for  $\geq 3$ , 2, 1 and 0 types of geometric quality criteria respectively. A grey segment represents the fraction of residues that are not modelled. The numeric value for each fraction is indicated below the corresponding segment, with a dot representing fractions  $\leq 5\%$ . The upper red bar (where present) indicates the fraction of residues that have poor fit to the electron density. The numeric value is given above the bar.

Mol	Chain	Length	Quality of chain
1	A	665	 8% 77% 17% • 5%
2	B	12	 75% 25%
3	C	17	 47% 53%

## 2 Entry composition [i](#)

There are 5 unique types of molecules in this entry. The entry contains 5591 atoms, of which 0 are hydrogens and 0 are deuteriums.

In the tables below, the ZeroOcc column contains the number of atoms modelled with zero occupancy, the AltConf column contains the number of residues with at least one atom in alternate conformation and the Trace column contains the number of residues modelled with at most 2 atoms.

- Molecule 1 is a protein called BLOOM'S SYNDROME HELICASE.

Mol	Chain	Residues	Atoms					ZeroOcc	AltConf	Trace
			Total	C	N	O	S			
1	A	629	4981	3158	863	925	35	0	0	0

There are 2 discrepancies between the modelled and reference sequences:

Chain	Residue	Modelled	Actual	Comment	Reference
A	634	SER	-	expression tag	UNP P54132
A	635	MET	-	expression tag	UNP P54132

- Molecule 2 is a DNA chain called 5'-D(\*AP\*GP\*CP\*GP\*TP\*CP\*GP\*AP\*GP\*AP\*TP\*C P)-3'.

Mol	Chain	Residues	Atoms					ZeroOcc	AltConf	Trace
			Total	C	N	O	P			
2	B	12	245	117	48	69	11	0	0	0

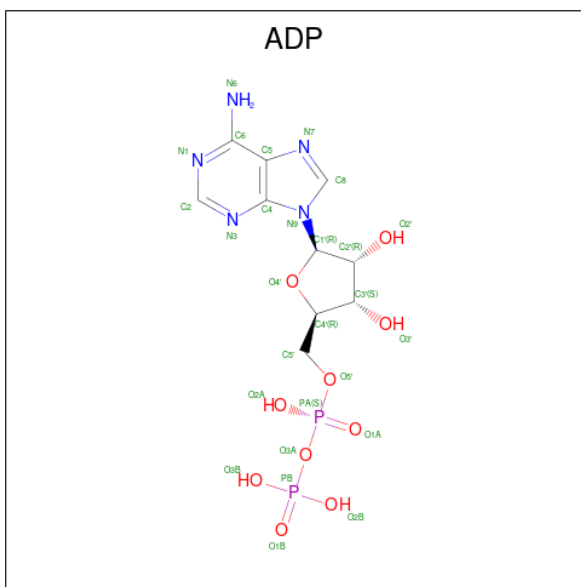
- Molecule 3 is a DNA chain called 5'-D(\*GP\*AP\*TP\*CP\*TP\*CP\*GP\*AP\*CP\*GP\*CP\*TP\*CP\*DT \*CP\*CP\*CP)-3'.

Mol	Chain	Residues	Atoms					ZeroOcc	AltConf	Trace
			Total	C	N	O	P			
3	C	17	337	162	57	102	16	0	0	0

- Molecule 4 is ZINC ION (three-letter code: ZN) (formula: Zn).

Mol	Chain	Residues	Atoms		ZeroOcc	AltConf
4	A	1	Total	Zn	0	0
			1	1		

- Molecule 5 is ADENOSINE-5'-DIPHOSPHATE (three-letter code: ADP) (formula: C<sub>10</sub>H<sub>15</sub>N<sub>5</sub>O<sub>10</sub>P<sub>2</sub>).

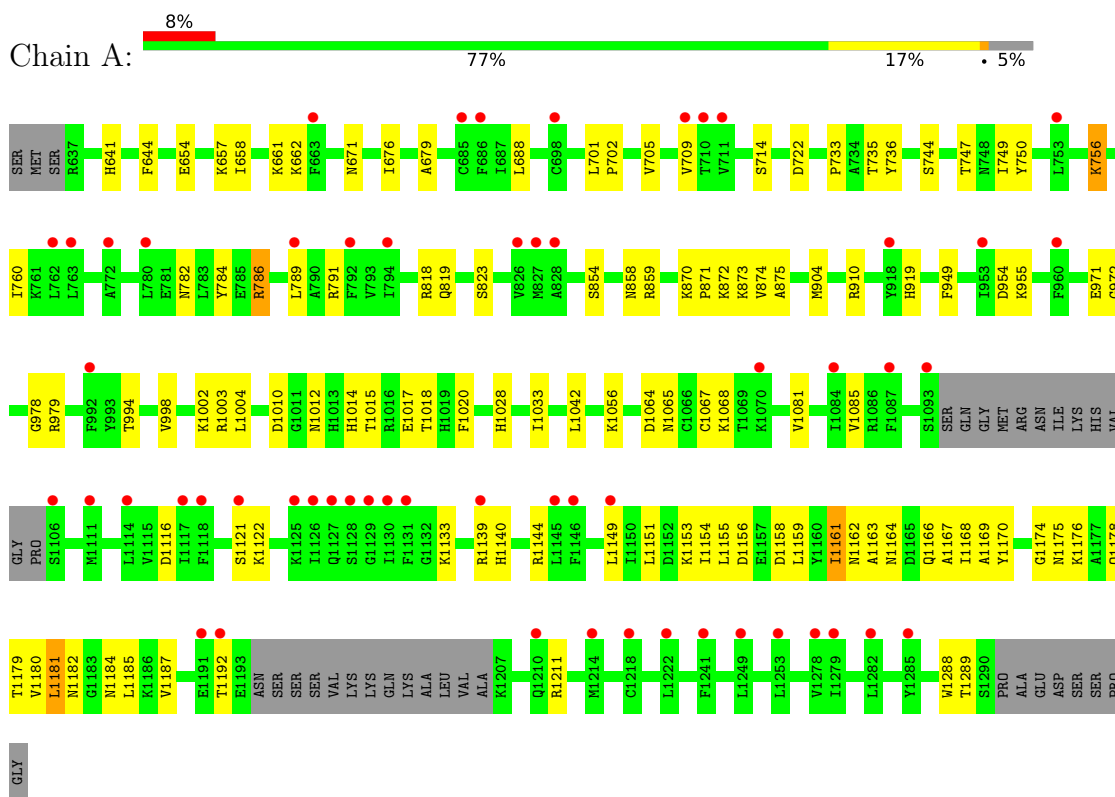


Mol	Chain	Residues	Atoms					ZeroOcc	AltConf
			Total	C	N	O	P		
5	A	1	27	10	5	10	2	0	0

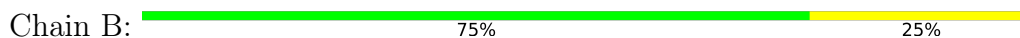
### 3 Residue-property plots

These plots are drawn for all protein, RNA, DNA and oligosaccharide chains in the entry. The first graphic for a chain summarises the proportions of the various outlier classes displayed in the second graphic. The second graphic shows the sequence view annotated by issues in geometry and electron density. Residues are color-coded according to the number of geometric quality criteria for which they contain at least one outlier: green = 0, yellow = 1, orange = 2 and red = 3 or more. A red dot above a residue indicates a poor fit to the electron density ( $RSRZ > 2$ ). Stretches of 2 or more consecutive residues without any outlier are shown as a green connector. Residues present in the sample, but not in the model, are shown in grey.

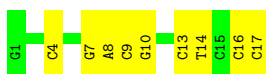
- Molecule 1: BLOOM'S SYNDROME HELICASE



- Molecule 2: 5'-D(\*AP\*GP\*CP\*GP\*TP\*CP\*GP\*AP\*GP\*AP\*TP\*CP)-3'



- Molecule 3: 5'-D(\*GP\*AP\*TP\*CP\*TP\*CP\*GP\*AP\*CP\*GP\*CP\*TP\*CP\*DT \*CP\*CP\*CP)-3'



## 4 Data and refinement statistics i

Property	Value	Source
Space group	P 42	Depositor
Cell constants a, b, c, $\alpha$ , $\beta$ , $\gamma$	149.53Å 149.53Å 64.06Å 90.00° 90.00° 90.00°	Depositor
Resolution (Å)	48.65 – 3.20 48.65 – 3.20	Depositor EDS
% Data completeness (in resolution range)	99.4 (48.65-3.20) 99.4 (48.65-3.20)	Depositor EDS
$R_{merge}$	0.04	Depositor
$R_{sym}$	(Not available)	Depositor
$\langle I/\sigma(I) \rangle$ <sup>1</sup>	1.16 (at 3.19Å)	Xtrriage
Refinement program	PHENIX (PHENIX.REFINE)	Depositor
R, $R_{free}$	0.229 , 0.259 0.233 , 0.264	Depositor DCC
$R_{free}$ test set	1178 reflections (5.00%)	wwPDB-VP
Wilson B-factor (Å <sup>2</sup> )	147.0	Xtrriage
Anisotropy	0.437	Xtrriage
Bulk solvent $k_{sol}$ (e/Å <sup>3</sup> ), $B_{sol}$ (Å <sup>2</sup> )	0.25 , 93.3	EDS
L-test for twinning <sup>2</sup>	$\langle  L  \rangle = 0.44$ , $\langle L^2 \rangle = 0.27$	Xtrriage
Estimated twinning fraction	0.053 for h,-k,-l	Xtrriage
$F_o, F_c$ correlation	0.92	EDS
Total number of atoms	5591	wwPDB-VP
Average B, all atoms (Å <sup>2</sup> )	178.0	wwPDB-VP

Xtrriage's analysis on translational NCS is as follows: *The largest off-origin peak in the Patterson function is 2.84% of the height of the origin peak. No significant pseudotranslation is detected.*

<sup>1</sup>Intensities estimated from amplitudes.

<sup>2</sup>Theoretical values of  $\langle |L| \rangle$ ,  $\langle L^2 \rangle$  for acentric reflections are 0.5, 0.333 respectively for untwinned datasets, and 0.375, 0.2 for perfectly twinned datasets.

## 5 Model quality [i](#)

### 5.1 Standard geometry [i](#)

Bond lengths and bond angles in the following residue types are not validated in this section: ADP, ZN

The Z score for a bond length (or angle) is the number of standard deviations the observed value is removed from the expected value. A bond length (or angle) with  $|Z| > 5$  is considered an outlier worth inspection. RMSZ is the root-mean-square of all Z scores of the bond lengths (or angles).

Mol	Chain	Bond lengths		Bond angles	
		RMSZ	# Z  >5	RMSZ	# Z  >5
1	A	0.31	0/5078	0.59	1/6855 (0.0%)
2	B	0.67	0/275	0.91	0/423
3	C	0.61	0/375	0.96	0/575
All	All	0.37	0/5728	0.64	1/7853 (0.0%)

There are no bond length outliers.

All (1) bond angle outliers are listed below:

Mol	Chain	Res	Type	Atoms	Z	Observed(°)	Ideal(°)
1	A	1161	ILE	N-CA-C	-5.20	96.95	111.00

There are no chirality outliers.

There are no planarity outliers.

### 5.2 Too-close contacts [i](#)

In the following table, the Non-H and H(model) columns list the number of non-hydrogen atoms and hydrogen atoms in the chain respectively. The H(added) column lists the number of hydrogen atoms added and optimized by MolProbity. The Clashes column lists the number of clashes within the asymmetric unit, whereas Symm-Clashes lists symmetry-related clashes.

Mol	Chain	Non-H	H(model)	H(added)	Clashes	Symm-Clashes
1	A	4981	0	4940	65	1
2	B	245	0	136	3	0
3	C	337	0	193	12	0
4	A	1	0	0	0	0
5	A	27	0	12	0	0
All	All	5591	0	5281	74	1

The all-atom clashscore is defined as the number of clashes found per 1000 atoms (including hydrogen atoms). The all-atom clashscore for this structure is 7.

All (74) close contacts within the same asymmetric unit are listed below, sorted by their clash magnitude.

Atom-1	Atom-2	Interatomic distance (Å)	Clash overlap (Å)
1:A:1033:ILE:HD11	1:A:1192:THR:HG21	1.58	0.85
1:A:641:HIS:HB3	1:A:644:PHE:HD2	1.42	0.84
1:A:1028:HIS:CE1	1:A:1151:LEU:HG	2.16	0.80
1:A:858:ASN:HB2	1:A:1042:LEU:HD11	1.64	0.79
1:A:676:ILE:HD13	1:A:701:LEU:HD23	1.73	0.70
1:A:671:ASN:ND2	1:A:854:SER:O	2.26	0.69
1:A:733:PRO:HB2	1:A:760:ILE:HA	1.75	0.68
1:A:1153:LYS:HE2	1:A:1176:LYS:HE3	1.77	0.66
1:A:870:LYS:HD3	1:A:873:LYS:HD3	1.77	0.65
1:A:1116:ASP:OD1	1:A:1139:ARG:NH2	2.26	0.65
1:A:1028:HIS:HE1	1:A:1151:LEU:HG	1.63	0.63
1:A:1211:ARG:NH1	1:A:1288:TRP:O	2.31	0.63
1:A:641:HIS:HB3	1:A:644:PHE:CD2	2.29	0.62
1:A:1180:VAL:HG22	1:A:1185:LEU:HD23	1.82	0.62
1:A:1121:SER:OG	1:A:1122:LYS:N	2.37	0.58
3:C:4:DC:H5'	3:C:4:DC:H6	1.69	0.58
1:A:1149:LEU:O	1:A:1155:LEU:N	2.34	0.57
1:A:1168:ILE:HD13	2:B:2:DG:H4'	1.86	0.57
1:A:859:ARG:NH1	1:A:978:GLY:O	2.38	0.56
1:A:954:ASP:HB2	1:A:979:ARG:NH2	2.21	0.56
1:A:1158:ASP:O	1:A:1169:ALA:HA	2.07	0.53
3:C:9:DC:H2''	3:C:10:DG:C8	2.43	0.53
1:A:756:LYS:NZ	1:A:782:ASN:HB3	2.24	0.53
1:A:1002:LYS:HB3	1:A:1159:LEU:HD11	1.91	0.52
1:A:1161:ILE:HD13	1:A:1167:ALA:HB2	1.91	0.51
3:C:7:DG:H1'	3:C:8:DA:C8	2.45	0.51
1:A:1015:THR:O	1:A:1018:THR:OG1	2.18	0.51
1:A:919:HIS:HB2	3:C:17:DC:OP1	2.11	0.50
1:A:1003:ARG:HH12	3:C:14:DT:H5''	1.75	0.50
1:A:735:THR:HG21	1:A:749:ILE:HD12	1.92	0.50
1:A:1158:ASP:HB3	1:A:1170:TYR:HB2	1.93	0.50
1:A:1017:GLU:O	1:A:1020:PHE:HB2	2.12	0.49
1:A:1175:ASN:OD1	1:A:1176:LYS:N	2.46	0.49
1:A:875:ALA:HA	1:A:904:MET:HE1	1.93	0.49
1:A:756:LYS:HG2	1:A:786:ARG:HG2	1.95	0.48
3:C:16:DC:N4	3:C:17:DC:H42	2.12	0.48
1:A:679:ALA:O	1:A:791:ARG:NH1	2.48	0.47

*Continued on next page...*



Continued from previous page...

Atom-1	Atom-2	Interatomic distance (Å)	Clash overlap (Å)
1:A:1064:ASP:HA	1:A:1067:CYS:HB2	1.98	0.46
1:A:1162:ASN:OD1	1:A:1163:ALA:N	2.48	0.46
1:A:998:VAL:HG12	1:A:1002:LYS:HE3	1.97	0.46
1:A:1064:ASP:OD1	1:A:1065:ASN:N	2.48	0.46
3:C:4:DC:H5'	3:C:4:DC:C6	2.50	0.45
1:A:1179:THR:O	1:A:1184:ASN:HB2	2.15	0.45
1:A:1081:VAL:HG21	1:A:1187:VAL:HG21	1.98	0.45
1:A:1178:GLN:HA	1:A:1181:LEU:HB2	1.98	0.45
1:A:1162:ASN:C	1:A:1164:ASN:H	2.18	0.45
1:A:1002:LYS:HG2	1:A:1020:PHE:CE1	2.52	0.44
1:A:1014:HIS:HB3	1:A:1017:GLU:OE2	2.17	0.44
1:A:654:GLU:O	1:A:658:ILE:HG13	2.17	0.44
1:A:701:LEU:HB3	1:A:702:PRO:HD3	2.00	0.44
3:C:13:DC:H6	3:C:13:DC:O5'	2.01	0.43
1:A:1178:GLN:O	1:A:1182:ASN:N	2.52	0.43
1:A:747:THR:HA	1:A:750:TYR:HD2	1.83	0.43
1:A:1003:ARG:NH1	3:C:14:DT:OP1	2.52	0.42
1:A:1211:ARG:HH12	1:A:1289:THR:HA	1.84	0.42
1:A:1140:HIS:HD2	1:A:1144:ARG:HD2	1.85	0.42
1:A:658:ILE:HD12	1:A:705:VAL:HB	2.01	0.42
1:A:1154:ILE:O	1:A:1174:GLY:N	2.50	0.42
1:A:1161:ILE:HD13	1:A:1161:ILE:HA	1.97	0.42
1:A:871:PRO:O	2:B:5:DT:OP1	2.38	0.41
2:B:4:DG:H2'	2:B:5:DT:H72	2.03	0.41
3:C:9:DC:H2''	3:C:10:DG:H8	1.84	0.41
1:A:971:GLU:HG2	1:A:972:GLY:H	1.85	0.41
1:A:1033:ILE:HB	1:A:1068:LYS:HE3	2.02	0.41
1:A:735:THR:OG1	1:A:736:TYR:N	2.54	0.41
3:C:17:DC:H6	3:C:17:DC:H2'	1.64	0.41
1:A:1004:LEU:HD13	1:A:1004:LEU:HA	1.90	0.41
1:A:784:TYR:OH	1:A:823:SER:HB3	2.21	0.40
1:A:1014:HIS:C	1:A:1017:GLU:HG2	2.41	0.40
1:A:1162:ASN:CG	1:A:1163:ALA:H	2.22	0.40
1:A:657:LYS:HG3	1:A:661:LYS:NZ	2.37	0.40
1:A:1081:VAL:O	1:A:1085:VAL:HG23	2.22	0.40
1:A:1178:GLN:HG3	1:A:1182:ASN:OD1	2.22	0.40
1:A:1166:GLN:NE2	3:C:13:DC:OP1	2.55	0.40

All (1) symmetry-related close contacts are listed below. The label for Atom-2 includes the symmetry operator and encoded unit-cell translations to be applied.

Atom-1	Atom-2	Interatomic distance (Å)	Clash overlap (Å)
1:A:744:SER:OG	1:A:1162:ASN:O[3_554]	1.91	0.29

### 5.3 Torsion angles [i](#)

#### 5.3.1 Protein backbone [i](#)

In the following table, the Percentiles column shows the percent Ramachandran outliers of the chain as a percentile score with respect to all X-ray entries followed by that with respect to entries of similar resolution.

The Analysed column shows the number of residues for which the backbone conformation was analysed, and the total number of residues.

Mol	Chain	Analysed	Favoured	Allowed	Outliers	Percentiles
1	A	623/665 (94%)	593 (95%)	30 (5%)	0	<a href="#">100</a> <a href="#">100</a>

There are no Ramachandran outliers to report.

#### 5.3.2 Protein sidechains [i](#)

In the following table, the Percentiles column shows the percent sidechain outliers of the chain as a percentile score with respect to all X-ray entries followed by that with respect to entries of similar resolution.

The Analysed column shows the number of residues for which the sidechain conformation was analysed, and the total number of residues.

Mol	Chain	Analysed	Rotameric	Outliers	Percentiles
1	A	548/593 (92%)	526 (96%)	22 (4%)	<a href="#">31</a> <a href="#">66</a>

All (22) residues with a non-rotameric sidechain are listed below:

Mol	Chain	Res	Type
1	A	662	LYS
1	A	688	LEU
1	A	709	VAL
1	A	714	SER
1	A	722	ASP
1	A	756	LYS
1	A	786	ARG
1	A	789	LEU

*Continued on next page...*

*Continued from previous page...*

Mol	Chain	Res	Type
1	A	818	ARG
1	A	819	GLN
1	A	872	LYS
1	A	874	VAL
1	A	910	ARG
1	A	949	PHE
1	A	955	LYS
1	A	994	THR
1	A	1010	ASP
1	A	1012	ASN
1	A	1056	LYS
1	A	1133	LYS
1	A	1156	ASP
1	A	1181	LEU

Sometimes sidechains can be flipped to improve hydrogen bonding and reduce clashes. All (8) such sidechains are listed below:

Mol	Chain	Res	Type
1	A	660	HIS
1	A	819	GLN
1	A	1022	ASN
1	A	1028	HIS
1	A	1089	GLN
1	A	1140	HIS
1	A	1166	GLN
1	A	1210	GLN

### 5.3.3 RNA [i](#)

There are no RNA molecules in this entry.

### 5.4 Non-standard residues in protein, DNA, RNA chains [i](#)

There are no non-standard protein/DNA/RNA residues in this entry.

### 5.5 Carbohydrates [i](#)

There are no monosaccharides in this entry.

## 5.6 Ligand geometry [i](#)

Of 2 ligands modelled in this entry, 1 is monoatomic - leaving 1 for Mogul analysis.

In the following table, the Counts columns list the number of bonds (or angles) for which Mogul statistics could be retrieved, the number of bonds (or angles) that are observed in the model and the number of bonds (or angles) that are defined in the Chemical Component Dictionary. The Link column lists molecule types, if any, to which the group is linked. The Z score for a bond length (or angle) is the number of standard deviations the observed value is removed from the expected value. A bond length (or angle) with  $|Z| > 2$  is considered an outlier worth inspection. RMSZ is the root-mean-square of all Z scores of the bond lengths (or angles).

Mol	Type	Chain	Res	Link	Bond lengths			Bond angles		
					Counts	RMSZ	# Z  > 2	Counts	RMSZ	# Z  > 2
5	ADP	A	2292	-	24,29,29	0.91	1 (4%)	29,45,45	1.43	4 (13%)

In the following table, the Chirals column lists the number of chiral outliers, the number of chiral centers analysed, the number of these observed in the model and the number defined in the Chemical Component Dictionary. Similar counts are reported in the Torsion and Rings columns. '-' means no outliers of that kind were identified.

Mol	Type	Chain	Res	Link	Chirals	Torsions	Rings
5	ADP	A	2292	-	-	5/12/32/32	0/3/3/3

All (1) bond length outliers are listed below:

Mol	Chain	Res	Type	Atoms	Z	Observed(Å)	Ideal(Å)
5	A	2292	ADP	C5-C4	2.24	1.46	1.40

All (4) bond angle outliers are listed below:

Mol	Chain	Res	Type	Atoms	Z	Observed(°)	Ideal(°)
5	A	2292	ADP	N3-C2-N1	-3.40	123.36	128.68
5	A	2292	ADP	PA-O3A-PB	-3.24	121.70	132.83
5	A	2292	ADP	C3'-C2'-C1'	2.87	105.31	100.98
5	A	2292	ADP	C4-C5-N7	-2.10	107.21	109.40

There are no chirality outliers.

All (5) torsion outliers are listed below:

Mol	Chain	Res	Type	Atoms
5	A	2292	ADP	C5'-O5'-PA-O1A
5	A	2292	ADP	O4'-C4'-C5'-O5'
5	A	2292	ADP	C5'-O5'-PA-O3A

*Continued on next page...*

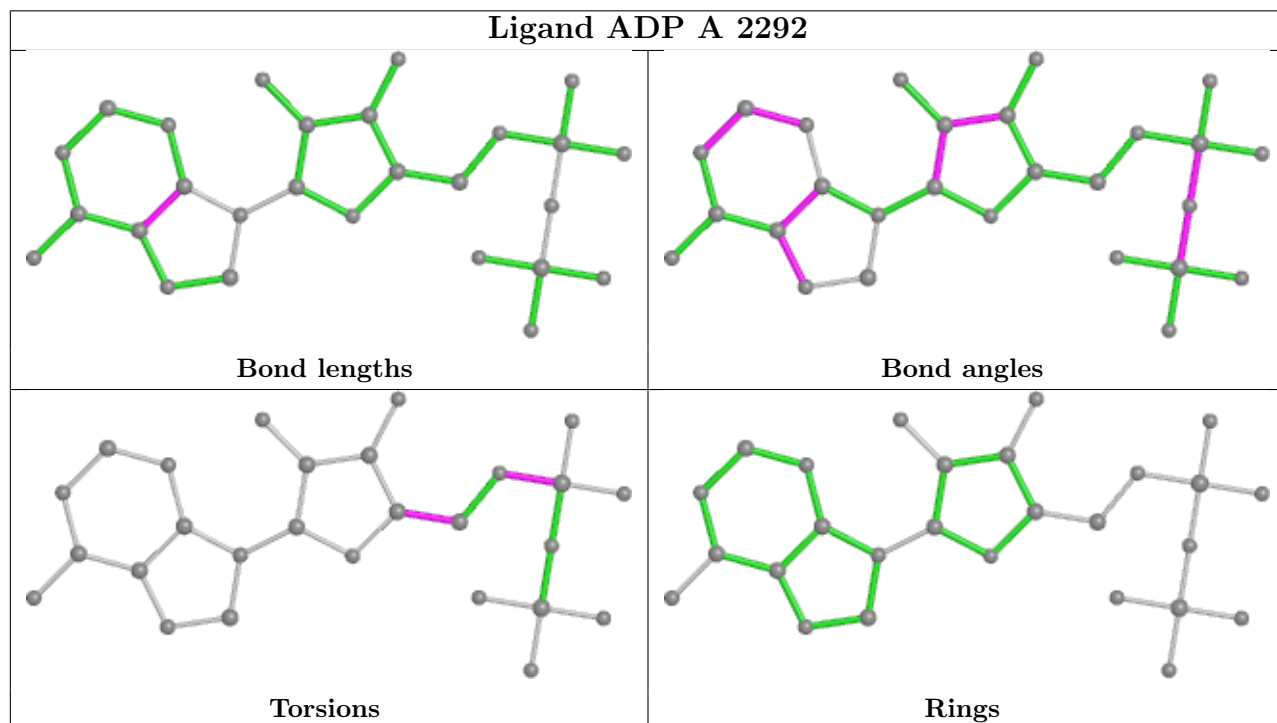
Continued from previous page...

Mol	Chain	Res	Type	Atoms
5	A	2292	ADP	C5'-O5'-PA-O2A
5	A	2292	ADP	C3'-C4'-C5'-O5'

There are no ring outliers.

No monomer is involved in short contacts.

The following is a two-dimensional graphical depiction of Mogul quality analysis of bond lengths, bond angles, torsion angles, and ring geometry for all instances of the Ligand of Interest. In addition, ligands with molecular weight > 250 and outliers as shown on the validation Tables will also be included. For torsion angles, if less than 5% of the Mogul distribution of torsion angles is within 10 degrees of the torsion angle in question, then that torsion angle is considered an outlier. Any bond that is central to one or more torsion angles identified as an outlier by Mogul will be highlighted in the graph. For rings, the root-mean-square deviation (RMSD) between the ring in question and similar rings identified by Mogul is calculated over all ring torsion angles. If the average RMSD is greater than 60 degrees and the minimal RMSD between the ring in question and any Mogul-identified rings is also greater than 60 degrees, then that ring is considered an outlier. The outliers are highlighted in purple. The color gray indicates Mogul did not find sufficient equivalents in the CSD to analyse the geometry.



## 5.7 Other polymers [i](#)

There are no such residues in this entry.

## 5.8 Polymer linkage issues

There are no chain breaks in this entry.

## 6 Fit of model and data

### 6.1 Protein, DNA and RNA chains

In the following table, the column labelled ‘#RSRZ> 2’ contains the number (and percentage) of RSRZ outliers, followed by percent RSRZ outliers for the chain as percentile scores relative to all X-ray entries and entries of similar resolution. The OWAB column contains the minimum, median, 95<sup>th</sup> percentile and maximum values of the occupancy-weighted average B-factor per residue. The column labelled ‘Q< 0.9’ lists the number of (and percentage) of residues with an average occupancy less than 0.9.

Mol	Chain	Analysed	<RSRZ>	#RSRZ>2	OWAB(Å <sup>2</sup> )	Q<0.9
1	A	629/665 (94%)	0.31	56 (8%) <b>9</b> <b>5</b>	129, 176, 221, 240	0
2	B	12/12 (100%)	-0.49	0 <b>100</b> <b>100</b>	160, 182, 205, 205	0
3	C	17/17 (100%)	-0.42	0 <b>100</b> <b>100</b>	182, 192, 206, 218	0
All	All	658/694 (94%)	0.27	56 (8%) <b>10</b> <b>6</b>	129, 178, 220, 240	0

All (56) RSRZ outliers are listed below:

Mol	Chain	Res	Type	RSRZ
1	A	792	PHE	7.5
1	A	1126	ILE	6.6
1	A	828	ALA	5.2
1	A	1222	LEU	5.0
1	A	709	VAL	4.8
1	A	1249	LEU	4.5
1	A	1214	MET	4.4
1	A	789	LEU	4.4
1	A	1125	LYS	4.3
1	A	1131	PHE	4.3
1	A	1146	PHE	4.1
1	A	663	PHE	3.7
1	A	1130	ILE	3.6
1	A	960	PHE	3.6
1	A	826	VAL	3.5
1	A	1278	VAL	3.3
1	A	711	VAL	3.2
1	A	1282	LEU	3.1
1	A	762	LEU	3.1
1	A	1087	PHE	3.0
1	A	827	MET	3.0
1	A	1145	LEU	3.0
1	A	686	PHE	3.0

*Continued on next page...*

*Continued from previous page...*

Mol	Chain	Res	Type	RSRZ
1	A	1128	SER	3.0
1	A	953	ILE	2.9
1	A	698	CYS	2.9
1	A	1192	THR	2.8
1	A	780	LEU	2.8
1	A	1253	LEU	2.8
1	A	1118	PHE	2.8
1	A	763	LEU	2.8
1	A	1127	GLN	2.7
1	A	1084	ILE	2.7
1	A	772	ALA	2.6
1	A	1139	ARG	2.6
1	A	1218	CYS	2.6
1	A	753	LEU	2.6
1	A	1114	LEU	2.6
1	A	1106	SER	2.6
1	A	1117	ILE	2.5
1	A	918	TYR	2.5
1	A	1149	LEU	2.5
1	A	1129	GLY	2.5
1	A	1285	TYR	2.5
1	A	1241	PHE	2.5
1	A	710	THR	2.5
1	A	685	CYS	2.4
1	A	1210	GLN	2.4
1	A	1070	LYS	2.3
1	A	1191	GLU	2.2
1	A	1093	SER	2.2
1	A	794	ILE	2.2
1	A	1121	SER	2.2
1	A	1111	MET	2.1
1	A	992	PHE	2.1
1	A	1279	ILE	2.1

## 6.2 Non-standard residues in protein, DNA, RNA chains [i](#)

There are no non-standard protein/DNA/RNA residues in this entry.

## 6.3 Carbohydrates [i](#)

There are no monosaccharides in this entry.

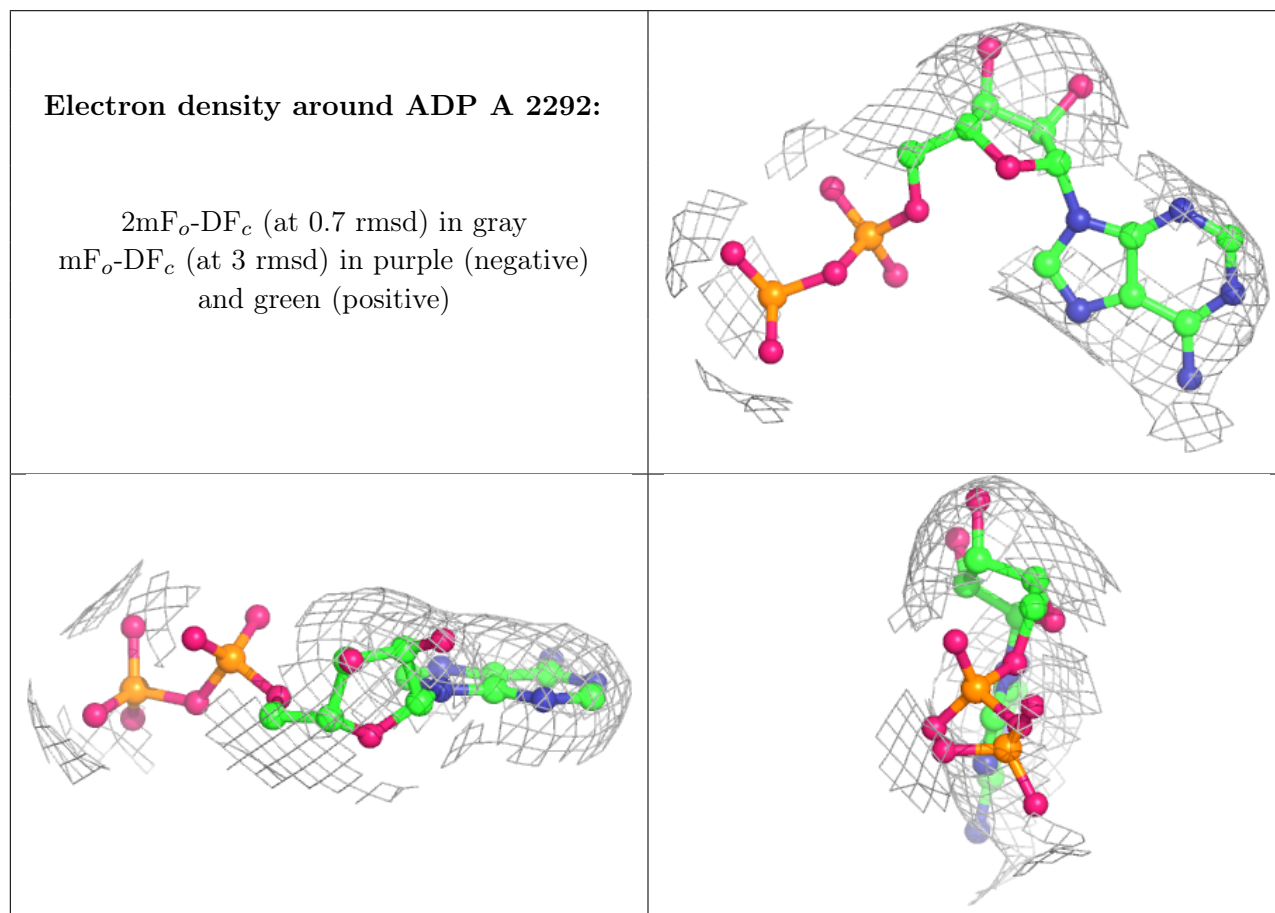


## 6.4 Ligands [i](#)

In the following table, the Atoms column lists the number of modelled atoms in the group and the number defined in the chemical component dictionary. The B-factors column lists the minimum, median, 95<sup>th</sup> percentile and maximum values of B factors of atoms in the group. The column labelled 'Q<0.9' lists the number of atoms with occupancy less than 0.9.

Mol	Type	Chain	Res	Atoms	RSCC	RSR	B-factors(Å <sup>2</sup> )	Q<0.9
5	ADP	A	2292	27/27	0.90	0.30	136,163,170,173	0
4	ZN	A	2291	1/1	0.98	0.24	155,155,155,155	0

The following is a graphical depiction of the model fit to experimental electron density of all instances of the Ligand of Interest. In addition, ligands with molecular weight > 250 and outliers as shown on the geometry validation Tables will also be included. Each fit is shown from different orientation to approximate a three-dimensional view.



## 6.5 Other polymers [i](#)

There are no such residues in this entry.