



Full wwPDB X-ray Structure Validation Report ⓘ

Sep 18, 2023 – 06:58 PM EDT

PDB ID : 5CPF
Title : Compensation of the effect of isoleucine to alanine mutation by designed inhibition in the InhA enzyme
Authors : Li, H.-J.; Lai, C.-T.; Pan, P.; Yu, W.; Shah, S.; Bommineni, G.R.; Perrone, V.; Garcia-Diaz, M.; Tonge, P.J.; Simmerling, C.
Deposited on : 2015-07-21
Resolution : 3.41 Å(reported)

This is a Full wwPDB X-ray Structure Validation Report for a publicly released PDB entry.

We welcome your comments at validation@mail.wwpdb.org

A user guide is available at

<https://www.wwpdb.org/validation/2017/XrayValidationReportHelp>

with specific help available everywhere you see the ⓘ symbol.

The types of validation reports are described at

<http://www.wwpdb.org/validation/2017/FAQs#types>.

The following versions of software and data (see [references ⓘ](#)) were used in the production of this report:

MolProbity : 4.02b-467
Mogul : 1.8.5 (274361), CSD as541be (2020)
Xtrriage (Phenix) : 1.13
EDS : 2.35.1
buster-report : 1.1.7 (2018)
Percentile statistics : 20191225.v01 (using entries in the PDB archive December 25th 2019)
Refmac : 5.8.0158
CCP4 : 7.0.044 (Gargrove)
Ideal geometry (proteins) : Engh & Huber (2001)
Ideal geometry (DNA, RNA) : Parkinson et al. (1996)
Validation Pipeline (wwPDB-VP) : 2.35.1

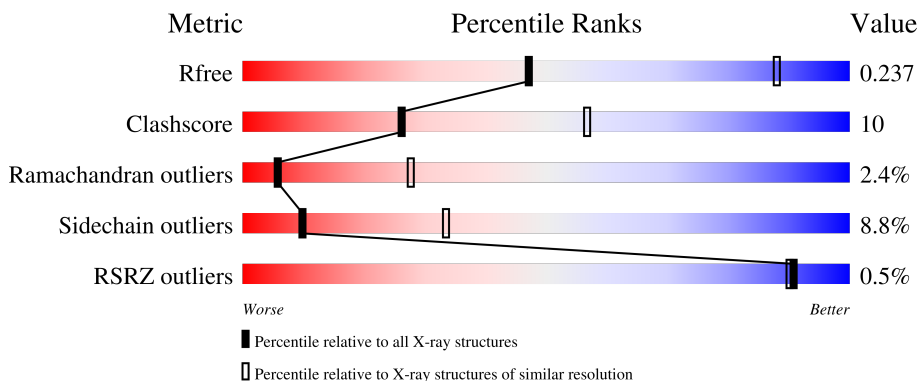
1 Overall quality at a glance

The following experimental techniques were used to determine the structure:

X-RAY DIFFRACTION

The reported resolution of this entry is 3.41 Å.

Percentile scores (ranging between 0-100) for global validation metrics of the entry are shown in the following graphic. The table shows the number of entries on which the scores are based.



Metric	Whole archive (#Entries)	Similar resolution (#Entries, resolution range(Å))
R_{free}	130704	1026 (3.48-3.32)
Clashscore	141614	1055 (3.48-3.32)
Ramachandran outliers	138981	1038 (3.48-3.32)
Sidechain outliers	138945	1038 (3.48-3.32)
RSRZ outliers	127900	2173 (3.50-3.30)

The table below summarises the geometric issues observed across the polymeric chains and their fit to the electron density. The red, orange, yellow and green segments of the lower bar indicate the fraction of residues that contain outliers for ≥ 3 , 2, 1 and 0 types of geometric quality criteria respectively. A grey segment represents the fraction of residues that are not modelled. The numeric value for each fraction is indicated below the corresponding segment, with a dot representing fractions $\leq 5\%$. The upper red bar (where present) indicates the fraction of residues that have poor fit to the electron density. The numeric value is given above the bar.

Mol	Chain	Length	Quality of chain
1	A	289	68% 22% • 8%
1	B	289	69% 23% • 8%
1	C	289	64% 27% • 8%
1	D	289	64% 25% • 8%

2 Entry composition [i](#)

There are 3 unique types of molecules in this entry. The entry contains 8002 atoms, of which 0 are hydrogens and 0 are deuteriums.

In the tables below, the ZeroOcc column contains the number of atoms modelled with zero occupancy, the AltConf column contains the number of residues with at least one atom in alternate conformation and the Trace column contains the number of residues modelled with at most 2 atoms.

- Molecule 1 is a protein called Enoyl-[acyl-carrier-protein] reductase [NADH].

Mol	Chain	Residues	Atoms					ZeroOcc	AltConf	Trace
			Total	C	N	O	S			
1	A	267	Total 1916	C 1210	N 339	O 358	S 9	0	0	0
1	B	267	Total 1940	C 1232	N 337	O 361	S 10	0	0	0
1	C	267	Total 1919	C 1213	N 339	O 358	S 9	0	0	0
1	D	267	Total 1943	C 1233	N 338	O 362	S 10	0	0	0

There are 84 discrepancies between the modelled and reference sequences:

Chain	Residue	Modelled	Actual	Comment	Reference
A	-19	MET	-	initiating methionine	UNP P9WGR0
A	-18	GLY	-	expression tag	UNP P9WGR0
A	-17	SER	-	expression tag	UNP P9WGR0
A	-16	SER	-	expression tag	UNP P9WGR0
A	-15	HIS	-	expression tag	UNP P9WGR0
A	-14	HIS	-	expression tag	UNP P9WGR0
A	-13	HIS	-	expression tag	UNP P9WGR0
A	-12	HIS	-	expression tag	UNP P9WGR0
A	-11	HIS	-	expression tag	UNP P9WGR0
A	-10	HIS	-	expression tag	UNP P9WGR0
A	-9	SER	-	expression tag	UNP P9WGR0
A	-8	SER	-	expression tag	UNP P9WGR0
A	-7	GLY	-	expression tag	UNP P9WGR0
A	-6	LEU	-	expression tag	UNP P9WGR0
A	-5	VAL	-	expression tag	UNP P9WGR0
A	-4	PRO	-	expression tag	UNP P9WGR0
A	-3	ARG	-	expression tag	UNP P9WGR0
A	-2	GLY	-	expression tag	UNP P9WGR0
A	-1	SER	-	expression tag	UNP P9WGR0
A	0	HIS	-	expression tag	UNP P9WGR0
A	215	ALA	ILE	engineered mutation	UNP P9WGR0

Continued on next page...

Continued from previous page...

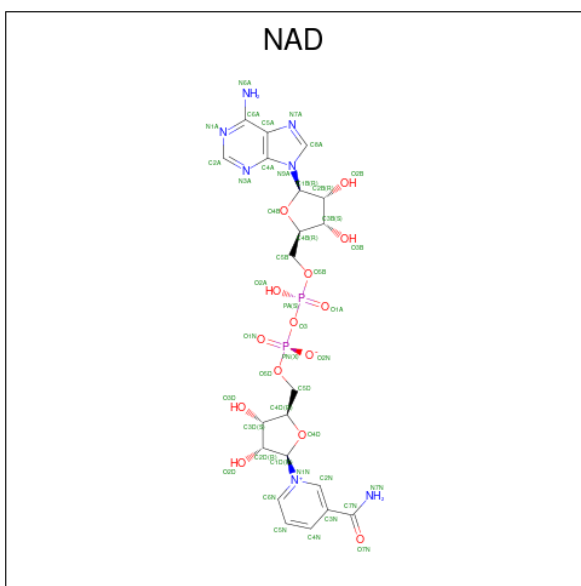
Chain	Residue	Modelled	Actual	Comment	Reference
B	-19	MET	-	initiating methionine	UNP P9WGR0
B	-18	GLY	-	expression tag	UNP P9WGR0
B	-17	SER	-	expression tag	UNP P9WGR0
B	-16	SER	-	expression tag	UNP P9WGR0
B	-15	HIS	-	expression tag	UNP P9WGR0
B	-14	HIS	-	expression tag	UNP P9WGR0
B	-13	HIS	-	expression tag	UNP P9WGR0
B	-12	HIS	-	expression tag	UNP P9WGR0
B	-11	HIS	-	expression tag	UNP P9WGR0
B	-10	HIS	-	expression tag	UNP P9WGR0
B	-9	SER	-	expression tag	UNP P9WGR0
B	-8	SER	-	expression tag	UNP P9WGR0
B	-7	GLY	-	expression tag	UNP P9WGR0
B	-6	LEU	-	expression tag	UNP P9WGR0
B	-5	VAL	-	expression tag	UNP P9WGR0
B	-4	PRO	-	expression tag	UNP P9WGR0
B	-3	ARG	-	expression tag	UNP P9WGR0
B	-2	GLY	-	expression tag	UNP P9WGR0
B	-1	SER	-	expression tag	UNP P9WGR0
B	0	HIS	-	expression tag	UNP P9WGR0
B	215	ALA	ILE	engineered mutation	UNP P9WGR0
C	-19	MET	-	initiating methionine	UNP P9WGR0
C	-18	GLY	-	expression tag	UNP P9WGR0
C	-17	SER	-	expression tag	UNP P9WGR0
C	-16	SER	-	expression tag	UNP P9WGR0
C	-15	HIS	-	expression tag	UNP P9WGR0
C	-14	HIS	-	expression tag	UNP P9WGR0
C	-13	HIS	-	expression tag	UNP P9WGR0
C	-12	HIS	-	expression tag	UNP P9WGR0
C	-11	HIS	-	expression tag	UNP P9WGR0
C	-10	HIS	-	expression tag	UNP P9WGR0
C	-9	SER	-	expression tag	UNP P9WGR0
C	-8	SER	-	expression tag	UNP P9WGR0
C	-7	GLY	-	expression tag	UNP P9WGR0
C	-6	LEU	-	expression tag	UNP P9WGR0
C	-5	VAL	-	expression tag	UNP P9WGR0
C	-4	PRO	-	expression tag	UNP P9WGR0
C	-3	ARG	-	expression tag	UNP P9WGR0
C	-2	GLY	-	expression tag	UNP P9WGR0
C	-1	SER	-	expression tag	UNP P9WGR0
C	0	HIS	-	expression tag	UNP P9WGR0
C	215	ALA	ILE	engineered mutation	UNP P9WGR0

Continued on next page...

Continued from previous page...

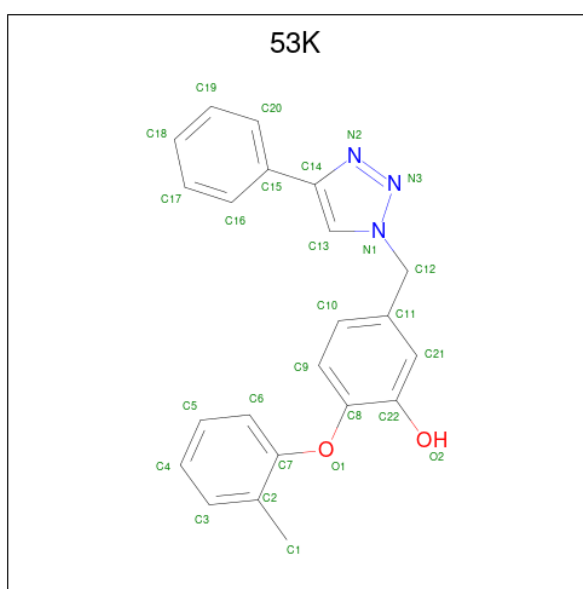
Chain	Residue	Modelled	Actual	Comment	Reference
D	-19	MET	-	initiating methionine	UNP P9WGR0
D	-18	GLY	-	expression tag	UNP P9WGR0
D	-17	SER	-	expression tag	UNP P9WGR0
D	-16	SER	-	expression tag	UNP P9WGR0
D	-15	HIS	-	expression tag	UNP P9WGR0
D	-14	HIS	-	expression tag	UNP P9WGR0
D	-13	HIS	-	expression tag	UNP P9WGR0
D	-12	HIS	-	expression tag	UNP P9WGR0
D	-11	HIS	-	expression tag	UNP P9WGR0
D	-10	HIS	-	expression tag	UNP P9WGR0
D	-9	SER	-	expression tag	UNP P9WGR0
D	-8	SER	-	expression tag	UNP P9WGR0
D	-7	GLY	-	expression tag	UNP P9WGR0
D	-6	LEU	-	expression tag	UNP P9WGR0
D	-5	VAL	-	expression tag	UNP P9WGR0
D	-4	PRO	-	expression tag	UNP P9WGR0
D	-3	ARG	-	expression tag	UNP P9WGR0
D	-2	GLY	-	expression tag	UNP P9WGR0
D	-1	SER	-	expression tag	UNP P9WGR0
D	0	HIS	-	expression tag	UNP P9WGR0
D	215	ALA	ILE	engineered mutation	UNP P9WGR0

- Molecule 2 is NICOTINAMIDE-ADENINE-DINUCLEOTIDE (three-letter code: NAD) (formula: $C_{21}H_{27}N_7O_{14}P_2$).



Mol	Chain	Residues	Atoms				ZeroOcc	AltConf	
			Total	C	N	O			P
2	A	1	Total 44	C 21	N 7	O 14	P 2	0	0
2	B	1	Total 44	C 21	N 7	O 14	P 2	0	0
2	C	1	Total 44	C 21	N 7	O 14	P 2	0	0
2	D	1	Total 44	C 21	N 7	O 14	P 2	0	0

- Molecule 3 is 2-(2-methylphenoxy)-5-[(4-phenyl-1H-1,2,3-triazol-1-yl)methyl]phenol (three-letter code: 53K) (formula: C₂₂H₁₉N₃O₂).

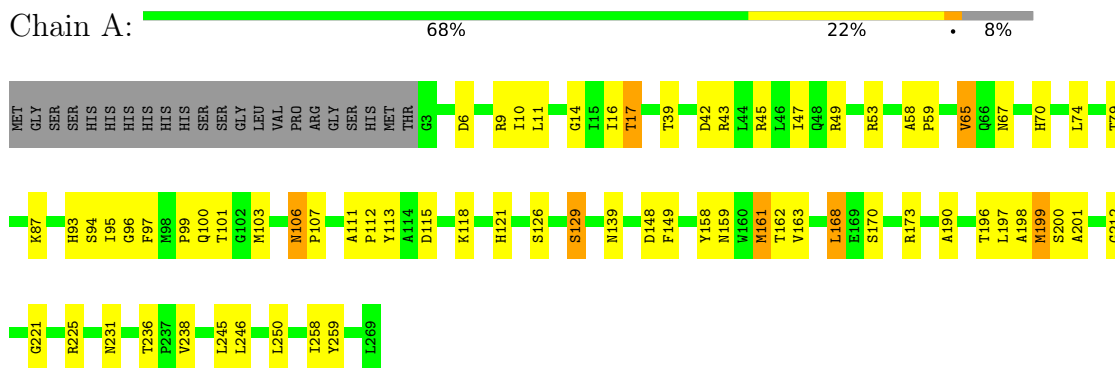


Mol	Chain	Residues	Atoms				ZeroOcc	AltConf
			Total	C	N	O		
3	A	1	Total 27	C 22	N 3	O 2	0	0
3	B	1	Total 27	C 22	N 3	O 2	0	0
3	C	1	Total 27	C 22	N 3	O 2	0	0
3	D	1	Total 27	C 22	N 3	O 2	0	0

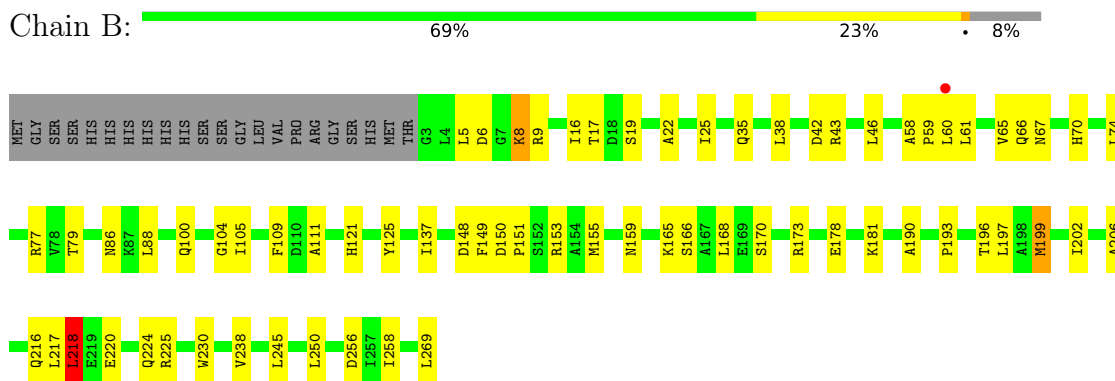
3 Residue-property plots [i](#)

These plots are drawn for all protein, RNA, DNA and oligosaccharide chains in the entry. The first graphic for a chain summarises the proportions of the various outlier classes displayed in the second graphic. The second graphic shows the sequence view annotated by issues in geometry and electron density. Residues are color-coded according to the number of geometric quality criteria for which they contain at least one outlier: green = 0, yellow = 1, orange = 2 and red = 3 or more. A red dot above a residue indicates a poor fit to the electron density ($RSRZ > 2$). Stretches of 2 or more consecutive residues without any outlier are shown as a green connector. Residues present in the sample, but not in the model, are shown in grey.

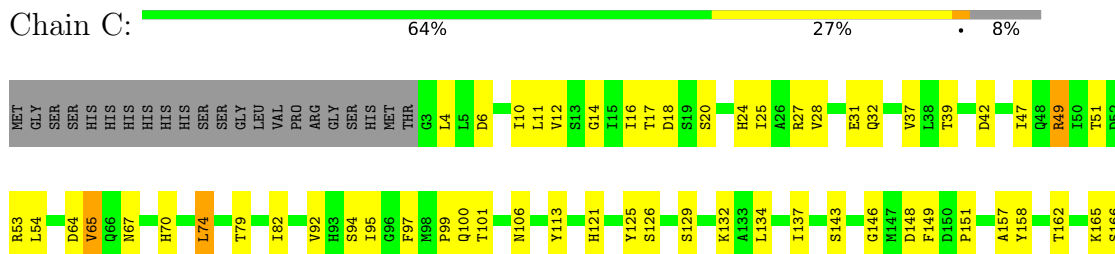
- Molecule 1: Enoyl-[acyl-carrier-protein] reductase [NADH]



- Molecule 1: Enoyl-[acyl-carrier-protein] reductase [NADH]

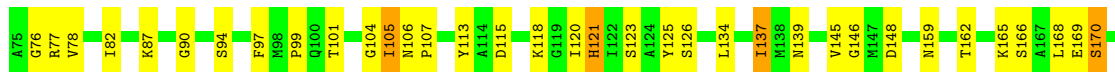
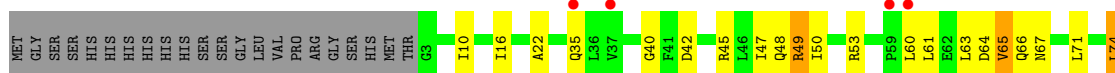


- Molecule 1: Enoyl-[acyl-carrier-protein] reductase [NADH]





• Molecule 1: Enoyl-[acyl-carrier-protein] reductase [NADH]



4 Data and refinement statistics

Property	Value	Source
Space group	P 21 21 21	Depositor
Cell constants a, b, c, α , β , γ	92.01Å 97.56Å 184.71Å 90.00° 90.00° 90.00°	Depositor
Resolution (Å)	48.78 – 3.41 48.78 – 3.41	Depositor EDS
% Data completeness (in resolution range)	99.3 (48.78-3.41) 99.5 (48.78-3.41)	Depositor EDS
R_{merge}	0.15	Depositor
R_{sym}	(Not available)	Depositor
$\langle I/\sigma(I) \rangle$ ¹	3.02 (at 3.40Å)	Xtrriage
Refinement program	PHENIX 1.7.2_869	Depositor
R, R_{free}	0.182 , 0.250 0.171 , 0.237	Depositor DCC
R_{free} test set	1196 reflections (5.14%)	wwPDB-VP
Wilson B-factor (Å ²)	71.1	Xtrriage
Anisotropy	0.409	Xtrriage
Bulk solvent k_{sol} (e/Å ³), B_{sol} (Å ²)	0.32 , 45.8	EDS
L-test for twinning ²	$\langle L \rangle = 0.47$, $\langle L^2 \rangle = 0.30$	Xtrriage
Estimated twinning fraction	No twinning to report.	Xtrriage
F_o, F_c correlation	0.95	EDS
Total number of atoms	8002	wwPDB-VP
Average B, all atoms (Å ²)	59.0	wwPDB-VP

Xtrriage's analysis on translational NCS is as follows: *The analyses of the Patterson function reveals a significant off-origin peak that is 39.19 % of the origin peak, indicating pseudo-translational symmetry. The chance of finding a peak of this or larger height randomly in a structure without pseudo-translational symmetry is equal to 3.2943e-04. The detected translational NCS is most likely also responsible for the elevated intensity ratio.*

¹Intensities estimated from amplitudes.

²Theoretical values of $\langle |L| \rangle$, $\langle L^2 \rangle$ for acentric reflections are 0.5, 0.333 respectively for untwinned datasets, and 0.375, 0.2 for perfectly twinned datasets.

5 Model quality [i](#)

5.1 Standard geometry [i](#)

Bond lengths and bond angles in the following residue types are not validated in this section: NAD, 53K

The Z score for a bond length (or angle) is the number of standard deviations the observed value is removed from the expected value. A bond length (or angle) with $|Z| > 5$ is considered an outlier worth inspection. RMSZ is the root-mean-square of all Z scores of the bond lengths (or angles).

Mol	Chain	Bond lengths		Bond angles	
		RMSZ	# Z >5	RMSZ	# Z >5
1	A	0.43	0/1954	0.63	0/2659
1	B	0.43	0/1978	0.64	0/2689
1	C	0.44	0/1957	0.63	0/2665
1	D	0.45	0/1981	0.64	0/2694
All	All	0.44	0/7870	0.64	0/10707

There are no bond length outliers.

There are no bond angle outliers.

There are no chirality outliers.

There are no planarity outliers.

5.2 Too-close contacts [i](#)

In the following table, the Non-H and H(model) columns list the number of non-hydrogen atoms and hydrogen atoms in the chain respectively. The H(added) column lists the number of hydrogen atoms added and optimized by MolProbity. The Clashes column lists the number of clashes within the asymmetric unit, whereas Symm-Clashes lists symmetry-related clashes.

Mol	Chain	Non-H	H(model)	H(added)	Clashes	Symm-Clashes
1	A	1916	0	1855	43	1
1	B	1940	0	1924	32	0
1	C	1919	0	1866	50	1
1	D	1943	0	1927	53	0
2	A	44	0	26	3	0
2	B	44	0	26	0	0
2	C	44	0	26	2	0
2	D	44	0	26	2	0
3	A	27	0	18	5	0

Continued on next page...

Continued from previous page...

Mol	Chain	Non-H	H(model)	H(added)	Clashes	Symm-Clashes
3	B	27	0	18	1	0
3	C	27	0	18	4	0
3	D	27	0	18	1	0
All	All	8002	0	7748	164	1

The all-atom clashscore is defined as the number of clashes found per 1000 atoms (including hydrogen atoms). The all-atom clashscore for this structure is 10.

All (164) close contacts within the same asymmetric unit are listed below, sorted by their clash magnitude.

Atom-1	Atom-2	Interatomic distance (Å)	Clash overlap (Å)
1:C:99:PRO:O	1:C:101:THR:N	2.18	0.77
1:D:207:LEU:HB3	1:D:211:ALA:HB2	1.70	0.74
1:C:16:ILE:HG23	1:C:17:THR:HG23	1.72	0.72
1:A:161:MET:HE3	1:A:161:MET:HA	1.76	0.68
1:D:65:VAL:HG21	1:D:126:SER:HB2	1.78	0.66
2:D:302:NAD:H52N	2:D:302:NAD:H52A	1.79	0.63
1:D:48:GLN:HG2	1:D:60:LEU:HD23	1.78	0.63
1:B:217:LEU:O	1:B:218:LEU:HB2	1.99	0.62
1:C:143:SER:HB2	1:C:185:ARG:NH2	2.15	0.62
1:A:10:ILE:HD13	1:A:246:LEU:HD13	1.80	0.62
1:D:49:ARG:HH21	1:D:53:ARG:HH12	1.48	0.62
1:D:148:ASP:HA	1:D:165:LYS:HD2	1.82	0.61
1:B:61:LEU:HD22	1:B:77:ARG:HB3	1.81	0.61
1:C:227:PRO:HB3	1:D:177:ARG:HA	1.84	0.60
1:A:196:THR:O	1:A:198:ALA:N	2.34	0.60
1:C:126:SER:HA	1:C:129:SER:HB2	1.82	0.60
1:A:126:SER:HA	1:A:129:SER:HB2	1.84	0.59
1:C:99:PRO:C	1:C:101:THR:H	2.04	0.59
1:A:245:LEU:HD11	1:A:258:ILE:HD12	1.84	0.59
1:C:157:ALA:HB3	3:C:301:53K:H18	1.84	0.58
1:A:97:PHE:HA	3:A:301:53K:H10	1.84	0.58
1:D:148:ASP:O	1:D:190:ALA:HA	2.04	0.58
1:B:16:ILE:HG23	1:B:17:THR:HG23	1.86	0.58
1:B:196:THR:H	1:B:199:MET:HB3	1.69	0.57
2:C:300:NAD:O2D	3:C:301:53K:O2	2.17	0.57
1:B:67:ASN:CG	1:B:70:HIS:HD2	2.08	0.57
1:D:97:PHE:HE2	1:D:118:LYS:HD3	1.70	0.56
1:A:159:ASN:HA	1:D:174:PHE:CE1	2.39	0.56
1:C:193:PRO:HD2	1:C:230:TRP:NE1	2.20	0.56
1:A:221:GLY:O	1:A:225:ARG:HG3	2.06	0.55

Continued on next page...

Continued from previous page...

Atom-1	Atom-2	Interatomic distance (Å)	Clash overlap (Å)
1:D:179:ALA:HB1	1:D:184:VAL:HB	1.89	0.55
2:A:300:NAD:O2D	3:A:301:53K:O2	2.12	0.55
1:D:97:PHE:H	1:D:123:SER:HB3	1.71	0.55
1:B:148:ASP:OD1	1:B:149:PHE:N	2.40	0.55
1:C:158:TYR:HD1	1:C:162:THR:HG1	1.54	0.55
1:D:66:GLN:HG2	1:D:121:HIS:CE1	2.41	0.55
1:B:109:PHE:HB3	1:C:132:LYS:HD2	1.88	0.55
1:B:148:ASP:HA	1:B:165:LYS:HD2	1.89	0.55
1:A:16:ILE:HG23	1:A:17:THR:HG23	1.89	0.54
1:A:199:MET:HB2	3:A:301:53K:H4	1.89	0.54
1:B:178:GLU:HA	1:B:181:LYS:HE2	1.88	0.54
1:C:148:ASP:HA	1:C:165:LYS:HE3	1.89	0.54
1:C:148:ASP:OD1	1:C:149:PHE:N	2.41	0.54
1:C:178:GLU:OE1	1:C:181:LYS:NZ	2.34	0.54
1:B:22:ALA:HA	1:B:25:ILE:HD12	1.90	0.53
1:B:100:GLN:HG2	1:B:206:ALA:HB2	1.90	0.53
1:D:99:PRO:HG2	1:D:115:ASP:HB3	1.89	0.53
1:D:194:ILE:N	2:D:302:NAD:O7N	2.33	0.53
1:C:47:ILE:O	1:C:51:THR:HG23	2.09	0.53
1:A:103:MET:SD	3:A:301:53K:H2	2.48	0.53
1:D:194:ILE:O	1:D:196:THR:HG23	2.10	0.52
1:C:148:ASP:O	1:C:190:ALA:HA	2.09	0.52
1:D:10:ILE:HG12	1:D:90:GLY:HA3	1.91	0.52
1:D:50:ILE:O	1:D:53:ARG:HB2	2.09	0.52
1:C:240:LYS:HD3	1:D:251:PRO:HG3	1.92	0.52
1:A:11:LEU:HD11	1:A:39:THR:HG23	1.91	0.51
1:A:163:VAL:HG22	1:D:170:SER:HB3	1.92	0.51
1:D:104:GLY:HA3	1:D:206:ALA:O	2.10	0.51
1:C:143:SER:HB2	1:C:185:ARG:HH21	1.75	0.51
1:A:162:THR:HG21	1:D:174:PHE:HE2	1.76	0.51
1:D:65:VAL:CG2	1:D:126:SER:HB2	2.41	0.50
1:B:220:GLU:O	1:B:224:GLN:HB2	2.12	0.50
1:C:11:LEU:HD11	1:C:39:THR:HG23	1.93	0.50
1:D:64:ASP:HB3	1:D:67:ASN:HB2	1.93	0.50
1:A:14:GLY:HA3	1:A:94:SER:O	2.13	0.49
1:A:199:MET:O	1:A:201:ALA:N	2.45	0.49
1:C:27:ARG:O	1:C:31:GLU:HG3	2.12	0.49
1:A:158:TYR:HD2	1:A:162:THR:OG1	1.95	0.49
1:B:151:PRO:O	1:C:173:ARG:NH1	2.46	0.49
1:C:64:ASP:HB3	1:C:67:ASN:HB2	1.95	0.49
1:C:240:LYS:HG2	1:D:249:TRP:CZ3	2.48	0.49

Continued on next page...

Continued from previous page...

Atom-1	Atom-2	Interatomic distance (Å)	Clash overlap (Å)
1:C:194:ILE:HG22	1:C:196:THR:HG23	1.95	0.48
1:A:113:TYR:CZ	1:D:121:HIS:HB2	2.48	0.48
1:C:221:GLY:O	1:C:225:ARG:HG3	2.13	0.48
1:D:203:VAL:O	1:D:207:LEU:HB2	2.13	0.48
1:D:165:LYS:O	1:D:169:GLU:HG3	2.14	0.48
1:B:148:ASP:O	1:B:190:ALA:HA	2.14	0.48
1:C:193:PRO:HD2	1:C:230:TRP:HE1	1.78	0.48
1:A:112:PRO:HD2	1:A:115:ASP:HB2	1.96	0.47
1:D:97:PHE:HA	3:D:301:53K:H10	1.96	0.47
1:D:40:GLY:HA3	1:D:47:ILE:HD13	1.96	0.47
1:D:66:GLN:HE22	1:D:118:LYS:HG3	1.79	0.47
1:D:121:HIS:HA	1:D:125:TYR:HB3	1.97	0.47
1:D:145:VAL:HA	1:D:187:ASN:O	2.15	0.47
1:A:113:TYR:CE2	1:D:121:HIS:HB2	2.50	0.47
1:D:78:VAL:O	1:D:82:ILE:HG12	2.14	0.47
1:C:4:LEU:HB3	1:C:32:GLN:HB3	1.96	0.46
1:D:63:LEU:HD11	1:D:71:LEU:HD23	1.98	0.46
1:A:99:PRO:C	1:A:101:THR:H	2.19	0.46
1:B:70:HIS:O	1:B:77:ARG:NH2	2.48	0.46
1:C:205:GLY:HA2	1:C:208:GLY:O	2.16	0.46
1:A:65:VAL:HB	2:A:300:NAD:N1A	2.30	0.46
1:B:9:ARG:NH2	1:B:86:ASN:HB3	2.31	0.46
1:A:106:ASN:HA	1:A:107:PRO:HD3	1.89	0.45
1:C:256:ASP:OD2	1:D:259:TYR:HB2	2.16	0.45
1:A:170:SER:HA	1:A:173:ARG:NH1	2.31	0.45
1:C:70:HIS:O	1:C:74:LEU:HB2	2.16	0.45
1:B:245:LEU:HD11	1:B:258:ILE:HG13	1.99	0.45
1:C:14:GLY:HA3	1:C:94:SER:O	2.16	0.45
1:A:67:ASN:CG	1:A:70:HIS:HD2	2.20	0.45
1:A:245:LEU:HD21	1:A:258:ILE:HD11	1.98	0.45
1:D:162:THR:O	1:D:166:SER:HB2	2.17	0.45
1:A:99:PRO:O	1:A:101:THR:N	2.50	0.44
1:D:22:ALA:HB2	1:D:94:SER:HB3	1.99	0.44
1:D:74:LEU:HD13	1:D:134:LEU:HD21	1.99	0.44
1:D:212:GLY:HA2	1:D:215:ALA:HB3	1.98	0.44
1:C:173:ARG:HD2	1:D:266:THR:HB	1.99	0.44
1:C:266:THR:HB	1:D:173:ARG:HD2	1.98	0.44
1:C:4:LEU:HD11	1:C:247:SER:HB2	1.99	0.44
1:C:65:VAL:HB	2:C:300:NAD:N1A	2.32	0.44
1:C:97:PHE:HA	3:C:301:53K:H10	1.98	0.44
1:A:93:HIS:O	1:A:93:HIS:ND1	2.50	0.44

Continued on next page...

Continued from previous page...

Atom-1	Atom-2	Interatomic distance (Å)	Clash overlap (Å)
1:A:148:ASP:OD1	1:A:149:PHE:N	2.51	0.44
1:A:190:ALA:HB3	1:A:259:TYR:CD2	2.53	0.44
1:B:88:LEU:HD23	1:B:88:LEU:HA	1.68	0.44
1:D:106:ASN:HA	1:D:107:PRO:HD3	1.91	0.44
1:A:159:ASN:O	1:A:162:THR:HB	2.18	0.44
1:D:87:LYS:HD2	1:D:137:ILE:C	2.39	0.44
1:D:87:LYS:HB2	1:D:139:ASN:OD1	2.18	0.43
2:A:300:NAD:H52A	2:A:300:NAD:H52N	2.00	0.43
1:D:146:GLY:HA3	1:D:188:LEU:HD23	2.00	0.43
1:A:168:LEU:HD22	1:A:168:LEU:O	2.18	0.43
1:B:5:LEU:O	1:B:8:LYS:HB2	2.19	0.43
1:A:96:GLY:O	3:A:301:53K:H11	2.19	0.43
1:C:134:LEU:HD23	1:C:137:ILE:HD11	2.00	0.43
1:B:104:GLY:HA3	1:B:206:ALA:O	2.19	0.43
1:B:153:ARG:NE	1:D:265:HIS:O	2.52	0.43
1:C:146:GLY:O	1:C:188:LEU:HA	2.19	0.43
1:A:121:HIS:HB2	1:D:113:TYR:CE2	2.54	0.42
1:B:38:LEU:O	1:B:60:LEU:HA	2.18	0.42
1:A:43:ARG:O	1:A:47:ILE:HG13	2.19	0.42
1:C:24:HIS:O	1:C:28:VAL:HG23	2.19	0.42
1:A:67:ASN:HB3	1:A:70:HIS:HB2	2.00	0.42
1:B:66:GLN:HG2	1:B:121:HIS:CE1	2.53	0.42
1:B:67:ASN:HB3	1:B:70:HIS:CD2	2.54	0.42
1:C:25:ILE:HG21	1:C:92:VAL:HG11	2.02	0.42
1:B:121:HIS:HB2	1:C:113:TYR:CZ	2.55	0.42
1:D:22:ALA:HB2	1:D:94:SER:CB	2.50	0.41
1:A:111:ALA:HA	1:A:112:PRO:HD3	1.78	0.41
1:C:245:LEU:HD21	1:C:258:ILE:HG13	2.02	0.41
1:D:105:ILE:HG23	1:D:207:LEU:HD23	2.03	0.41
1:A:250:LEU:HD23	1:A:250:LEU:HA	1.77	0.41
1:C:10:ILE:HG22	1:C:12:VAL:HG23	2.03	0.41
1:B:111:ALA:O	1:C:125:TYR:OH	2.37	0.41
1:B:193:PRO:HD2	1:B:230:TRP:CD1	2.55	0.41
1:C:196:THR:H	1:C:199:MET:HB3	1.86	0.41
1:C:247:SER:OG	1:C:248:ASP:N	2.54	0.41
1:D:268:LEU:HA	1:D:268:LEU:HD12	1.67	0.41
1:B:58:ALA:HA	1:B:59:PRO:HD3	1.94	0.41
1:A:97:PHE:HE2	1:A:118:LYS:HD3	1.86	0.41
1:B:125:TYR:CE1	1:C:113:TYR:HB2	2.56	0.41
1:B:218:LEU:HD12	1:B:218:LEU:HA	1.90	0.41
1:C:51:THR:HA	1:C:54:LEU:HD12	2.02	0.41

Continued on next page...

Continued from previous page...

Atom-1	Atom-2	Interatomic distance (Å)	Clash overlap (Å)
1:D:211:ALA:C	1:D:213:ALA:H	2.24	0.41
1:A:87:LYS:HB2	1:A:139:ASN:OD1	2.21	0.40
1:A:161:MET:HG3	1:A:161:MET:O	2.21	0.40
1:B:155:MET:HE2	3:B:301:53K:H6	2.03	0.40
1:C:157:ALA:HB3	3:C:301:53K:C18	2.50	0.40
1:C:250:LEU:HD23	1:C:250:LEU:HA	1.93	0.40
1:B:170:SER:HA	1:B:173:ARG:NH1	2.36	0.40
1:A:93:HIS:CE1	1:A:95:ILE:HB	2.57	0.40
1:C:11:LEU:HD12	1:C:37:VAL:O	2.22	0.40
1:A:58:ALA:HA	1:A:59:PRO:HD3	1.84	0.40
1:D:49:ARG:HH21	1:D:53:ARG:NH1	2.16	0.40

All (1) symmetry-related close contacts are listed below. The label for Atom-2 includes the symmetry operator and encoded unit-cell translations to be applied.

Atom-1	Atom-2	Interatomic distance (Å)	Clash overlap (Å)
1:A:212:GLY:O	1:C:49:ARG:NH2[3_555]	2.16	0.04

5.3 Torsion angles [i](#)

5.3.1 Protein backbone [i](#)

In the following table, the Percentiles column shows the percent Ramachandran outliers of the chain as a percentile score with respect to all X-ray entries followed by that with respect to entries of similar resolution.

The Analysed column shows the number of residues for which the backbone conformation was analysed, and the total number of residues.

Mol	Chain	Analysed	Favoured	Allowed	Outliers	Percentiles	
1	A	265/289 (92%)	236 (89%)	23 (9%)	6 (2%)	6	28
1	B	265/289 (92%)	234 (88%)	23 (9%)	8 (3%)	4	23
1	C	265/289 (92%)	244 (92%)	17 (6%)	4 (2%)	10	36
1	D	265/289 (92%)	244 (92%)	14 (5%)	7 (3%)	5	26
All	All	1060/1156 (92%)	958 (90%)	77 (7%)	25 (2%)	6	28

All (25) Ramachandran outliers are listed below:

Mol	Chain	Res	Type
1	B	8	LYS
1	B	218	LEU
1	C	100	GLN
1	A	100	GLN
1	A	197	LEU
1	A	200	SER
1	B	159	ASN
1	B	216	GLN
1	C	199	MET
1	D	120	ILE
1	D	121	HIS
1	A	6	ASP
1	A	42	ASP
1	D	16	ILE
1	D	159	ASN
1	A	199	MET
1	B	42	ASP
1	D	42	ASP
1	B	150	ASP
1	C	42	ASP
1	C	151	PRO
1	D	76	GLY
1	B	137	ILE
1	D	137	ILE
1	B	202	ILE

5.3.2 Protein sidechains [i](#)

In the following table, the Percentiles column shows the percent sidechain outliers of the chain as a percentile score with respect to all X-ray entries followed by that with respect to entries of similar resolution.

The Analysed column shows the number of residues for which the sidechain conformation was analysed, and the total number of residues.

Mol	Chain	Analysed	Rotameric	Outliers	Percentiles	
1	A	180/221 (81%)	165 (92%)	15 (8%)	11	36
1	B	190/221 (86%)	171 (90%)	19 (10%)	7	27
1	C	181/221 (82%)	166 (92%)	15 (8%)	11	36
1	D	191/221 (86%)	175 (92%)	16 (8%)	11	36
All	All	742/884 (84%)	677 (91%)	65 (9%)	10	33

All (65) residues with a non-rotameric sidechain are listed below:

Mol	Chain	Res	Type
1	A	9	ARG
1	A	17	THR
1	A	45	ARG
1	A	49	ARG
1	A	53	ARG
1	A	65	VAL
1	A	74	LEU
1	A	79	THR
1	A	106	ASN
1	A	129	SER
1	A	161	MET
1	A	168	LEU
1	A	231	ASN
1	A	236	THR
1	A	238	VAL
1	B	6	ASP
1	B	19	SER
1	B	35	GLN
1	B	43	ARG
1	B	46	LEU
1	B	65	VAL
1	B	74	LEU
1	B	79	THR
1	B	105	ILE
1	B	166	SER
1	B	168	LEU
1	B	197	LEU
1	B	199	MET
1	B	218	LEU
1	B	225	ARG
1	B	238	VAL
1	B	250	LEU
1	B	256	ASP
1	B	269	LEU
1	C	6	ASP
1	C	18	ASP
1	C	20	SER
1	C	49	ARG
1	C	53	ARG
1	C	65	VAL
1	C	74	LEU
1	C	79	THR

Continued on next page...

Continued from previous page...

Mol	Chain	Res	Type
1	C	82	ILE
1	C	95	ILE
1	C	106	ASN
1	C	121	HIS
1	C	166	SER
1	C	218	LEU
1	C	247	SER
1	D	35	GLN
1	D	45	ARG
1	D	49	ARG
1	D	61	LEU
1	D	65	VAL
1	D	74	LEU
1	D	77	ARG
1	D	101	THR
1	D	105	ILE
1	D	168	LEU
1	D	170	SER
1	D	177	ARG
1	D	200	SER
1	D	207	LEU
1	D	233	LYS
1	D	238	VAL

Sometimes sidechains can be flipped to improve hydrogen bonding and reduce clashes. All (2) such sidechains are listed below:

Mol	Chain	Res	Type
1	A	70	HIS
1	B	70	HIS

5.3.3 RNA [i](#)

There are no RNA molecules in this entry.

5.4 Non-standard residues in protein, DNA, RNA chains [i](#)

There are no non-standard protein/DNA/RNA residues in this entry.

5.5 Carbohydrates [i](#)

There are no monosaccharides in this entry.

5.6 Ligand geometry [i](#)

8 ligands are modelled in this entry.

In the following table, the Counts columns list the number of bonds (or angles) for which Mogul statistics could be retrieved, the number of bonds (or angles) that are observed in the model and the number of bonds (or angles) that are defined in the Chemical Component Dictionary. The Link column lists molecule types, if any, to which the group is linked. The Z score for a bond length (or angle) is the number of standard deviations the observed value is removed from the expected value. A bond length (or angle) with $|Z| > 2$ is considered an outlier worth inspection. RMSZ is the root-mean-square of all Z scores of the bond lengths (or angles).

Mol	Type	Chain	Res	Link	Bond lengths			Bond angles		
					Counts	RMSZ	# Z > 2	Counts	RMSZ	# Z > 2
3	53K	D	301	-	29,30,30	1.42	3 (10%)	37,41,41	1.30	2 (5%)
2	NAD	D	302	-	42,48,48	3.20	18 (42%)	50,73,73	1.77	10 (20%)
2	NAD	C	300	-	42,48,48	3.40	19 (45%)	50,73,73	1.74	10 (20%)
2	NAD	B	300	-	42,48,48	3.34	19 (45%)	50,73,73	1.79	12 (24%)
3	53K	A	301	-	29,30,30	1.52	3 (10%)	37,41,41	1.33	6 (16%)
3	53K	C	301	-	29,30,30	1.47	3 (10%)	37,41,41	1.12	4 (10%)
2	NAD	A	300	-	42,48,48	3.36	18 (42%)	50,73,73	1.85	10 (20%)
3	53K	B	301	-	29,30,30	1.51	3 (10%)	37,41,41	1.72	7 (18%)

In the following table, the Chirals column lists the number of chiral outliers, the number of chiral centers analysed, the number of these observed in the model and the number defined in the Chemical Component Dictionary. Similar counts are reported in the Torsion and Rings columns. '-' means no outliers of that kind were identified.

Mol	Type	Chain	Res	Link	Chirals	Torsions	Rings
3	53K	D	301	-	-	0/12/12/12	0/4/4/4
2	NAD	D	302	-	-	8/26/62/62	0/5/5/5
2	NAD	C	300	-	-	7/26/62/62	0/5/5/5
2	NAD	B	300	-	-	14/26/62/62	0/5/5/5
3	53K	A	301	-	-	4/12/12/12	0/4/4/4
3	53K	C	301	-	-	4/12/12/12	0/4/4/4
2	NAD	A	300	-	-	14/26/62/62	0/5/5/5
3	53K	B	301	-	-	4/12/12/12	0/4/4/4

All (86) bond length outliers are listed below:

Mol	Chain	Res	Type	Atoms	Z	Observed(Å)	Ideal(Å)
2	B	300	NAD	C2N-N1N	10.00	1.47	1.35
2	C	300	NAD	C2N-N1N	9.72	1.46	1.35
2	A	300	NAD	C2N-N1N	9.55	1.46	1.35
2	D	302	NAD	C2N-N1N	8.62	1.45	1.35
2	A	300	NAD	C7N-N7N	7.61	1.47	1.33
2	C	300	NAD	C7N-N7N	7.46	1.47	1.33
2	D	302	NAD	C7N-N7N	7.10	1.46	1.33
2	B	300	NAD	C7N-N7N	7.03	1.46	1.33
2	A	300	NAD	C4N-C3N	6.69	1.50	1.39
2	B	300	NAD	C4N-C3N	6.29	1.50	1.39
2	C	300	NAD	C4N-C3N	6.27	1.50	1.39
3	B	301	53K	C15-C14	-6.09	1.39	1.48
2	B	300	NAD	C2A-N3A	6.06	1.41	1.32
2	C	300	NAD	C2A-N3A	6.04	1.41	1.32
2	D	302	NAD	C2A-N3A	6.01	1.41	1.32
2	D	302	NAD	C4N-C3N	5.95	1.49	1.39
2	B	300	NAD	C8A-N7A	5.88	1.45	1.34
2	B	300	NAD	C6N-N1N	5.79	1.49	1.35
3	C	301	53K	C15-C14	-5.79	1.39	1.48
2	C	300	NAD	C8A-N7A	5.78	1.45	1.34
3	A	301	53K	C15-C14	-5.78	1.39	1.48
3	D	301	53K	C15-C14	-5.74	1.39	1.48
2	D	302	NAD	C6N-N1N	5.69	1.49	1.35
2	A	300	NAD	C6N-N1N	5.62	1.49	1.35
2	A	300	NAD	C2A-N3A	5.59	1.41	1.32
2	C	300	NAD	C6N-N1N	5.50	1.48	1.35
2	D	302	NAD	C8A-N7A	5.48	1.44	1.34
2	A	300	NAD	C8A-N7A	5.46	1.44	1.34
2	A	300	NAD	C2N-C3N	5.38	1.47	1.39
2	C	300	NAD	C2N-C3N	5.11	1.46	1.39
2	C	300	NAD	C2A-N1A	4.81	1.42	1.33
2	B	300	NAD	C2N-C3N	4.74	1.46	1.39
2	B	300	NAD	C2A-N1A	4.74	1.42	1.33
2	D	302	NAD	C2A-N1A	4.72	1.42	1.33
2	B	300	NAD	PA-O1A	4.70	1.67	1.50
2	D	302	NAD	PA-O1A	4.67	1.67	1.50
2	C	300	NAD	PA-O1A	4.48	1.66	1.50
2	A	300	NAD	PA-O1A	4.36	1.66	1.50
2	A	300	NAD	C2A-N1A	4.26	1.41	1.33
2	D	302	NAD	C2N-C3N	4.14	1.45	1.39
2	C	300	NAD	PN-O1N	3.94	1.64	1.50
2	D	302	NAD	PN-O1N	3.88	1.64	1.50

Continued on next page...

Continued from previous page...

Mol	Chain	Res	Type	Atoms	Z	Observed(Å)	Ideal(Å)
2	C	300	NAD	C3N-C7N	3.87	1.56	1.50
2	A	300	NAD	PN-O1N	3.86	1.64	1.50
2	B	300	NAD	PN-O1N	3.73	1.64	1.50
3	A	301	53K	N2-N3	3.68	1.41	1.34
2	B	300	NAD	C6A-N6A	3.67	1.47	1.34
2	C	300	NAD	C6A-N6A	3.65	1.47	1.34
2	A	300	NAD	C6A-N6A	3.62	1.47	1.34
3	C	301	53K	N2-N3	3.61	1.40	1.34
2	D	302	NAD	C6A-N6A	3.60	1.47	1.34
2	A	300	NAD	C3N-C7N	3.59	1.56	1.50
2	C	300	NAD	C2B-C1B	-3.49	1.48	1.53
3	B	301	53K	N2-N3	3.43	1.40	1.34
2	A	300	NAD	C6N-C5N	3.40	1.46	1.38
3	A	301	53K	N3-N1	3.28	1.40	1.34
2	B	300	NAD	C3B-C4B	3.28	1.61	1.53
2	A	300	NAD	C3B-C4B	3.26	1.61	1.53
2	D	302	NAD	C3B-C4B	3.24	1.61	1.53
2	C	300	NAD	C6N-C5N	3.23	1.45	1.38
2	D	302	NAD	C2B-C1B	-3.23	1.48	1.53
3	D	301	53K	N2-N3	3.20	1.40	1.34
2	A	300	NAD	C5N-C4N	3.15	1.45	1.38
2	C	300	NAD	C3B-C4B	3.15	1.61	1.53
3	C	301	53K	N3-N1	3.15	1.40	1.34
2	D	302	NAD	C6N-C5N	3.11	1.45	1.38
2	A	300	NAD	C2B-C1B	-3.02	1.49	1.53
2	B	300	NAD	C3N-C7N	2.98	1.55	1.50
2	B	300	NAD	C6N-C5N	2.94	1.45	1.38
2	C	300	NAD	O7N-C7N	-2.92	1.18	1.24
2	C	300	NAD	C5N-C4N	2.87	1.45	1.38
2	B	300	NAD	C5N-C4N	2.82	1.44	1.38
2	B	300	NAD	O7N-C7N	-2.80	1.18	1.24
2	A	300	NAD	O7N-C7N	-2.70	1.19	1.24
2	D	302	NAD	O7N-C7N	-2.54	1.19	1.24
2	D	302	NAD	C5N-C4N	2.53	1.44	1.38
2	D	302	NAD	C3N-C7N	2.52	1.54	1.50
2	B	300	NAD	C2D-C1D	-2.37	1.50	1.53
3	D	301	53K	N3-N1	2.33	1.38	1.34
2	D	302	NAD	C3D-C4D	2.32	1.58	1.53
3	B	301	53K	N3-N1	2.31	1.38	1.34
2	A	300	NAD	C3D-C4D	2.19	1.58	1.53
2	C	300	NAD	C3D-C4D	2.16	1.58	1.53
2	C	300	NAD	PA-O5B	2.16	1.68	1.59

Continued on next page...

Continued from previous page...

Mol	Chain	Res	Type	Atoms	Z	Observed(Å)	Ideal(Å)
2	B	300	NAD	C2B-C1B	-2.11	1.50	1.53
2	B	300	NAD	C3D-C4D	2.05	1.58	1.53

All (61) bond angle outliers are listed below:

Mol	Chain	Res	Type	Atoms	Z	Observed(°)	Ideal(°)
2	A	300	NAD	N3A-C2A-N1A	-6.94	117.83	128.68
2	C	300	NAD	N3A-C2A-N1A	-5.91	119.45	128.68
3	B	301	53K	N2-N3-N1	-5.88	102.89	107.31
2	B	300	NAD	N3A-C2A-N1A	-5.85	119.54	128.68
2	D	302	NAD	N3A-C2A-N1A	-5.67	119.81	128.68
3	D	301	53K	C12-N1-C13	4.97	135.52	129.19
3	B	301	53K	C13-C14-C15	-4.39	119.23	129.15
2	C	300	NAD	PN-O3-PA	-4.13	118.66	132.83
2	B	300	NAD	PN-O3-PA	-4.06	118.91	132.83
3	C	301	53K	C12-N1-C13	3.90	134.16	129.19
3	A	301	53K	N2-N3-N1	-3.79	104.46	107.31
2	A	300	NAD	PN-O3-PA	-3.76	119.94	132.83
2	D	302	NAD	O4B-C1B-C2B	-3.71	101.50	106.93
3	D	301	53K	N2-N3-N1	-3.55	104.64	107.31
2	A	300	NAD	O4B-C1B-C2B	-3.46	101.87	106.93
2	B	300	NAD	C3N-C2N-N1N	-3.45	117.06	120.43
3	B	301	53K	C12-N1-C13	3.39	133.51	129.19
2	D	302	NAD	PN-O3-PA	-3.27	121.61	132.83
2	C	300	NAD	C3N-C7N-N7N	3.27	121.67	117.75
2	D	302	NAD	C3D-C2D-C1D	-3.18	96.19	100.98
2	D	302	NAD	O3D-C3D-C4D	3.14	120.13	111.05
2	C	300	NAD	O4B-C1B-C2B	-3.03	102.50	106.93
2	C	300	NAD	O7N-C7N-N7N	-2.95	118.39	122.58
2	A	300	NAD	C3N-C7N-N7N	2.90	121.23	117.75
2	B	300	NAD	O4D-C4D-C3D	-2.80	99.58	105.11
2	D	302	NAD	C3N-C2N-N1N	-2.78	117.71	120.43
2	B	300	NAD	O7N-C7N-N7N	-2.76	118.66	122.58
3	A	301	53K	C8-O1-C7	2.72	124.51	118.04
2	D	302	NAD	C3B-C2B-C1B	-2.70	96.92	100.98
3	A	301	53K	C12-N1-C13	2.68	132.61	129.19
2	A	300	NAD	O3D-C3D-C4D	2.67	118.78	111.05
3	A	301	53K	C13-C14-C15	-2.67	123.11	129.15
2	A	300	NAD	O2D-C2D-C1D	2.59	120.42	110.85
2	C	300	NAD	O4B-C4B-C3B	-2.59	99.99	105.11
2	C	300	NAD	O3D-C3D-C4D	2.58	118.51	111.05
3	A	301	53K	C15-C14-N2	2.54	125.02	120.96

Continued on next page...

Continued from previous page...

Mol	Chain	Res	Type	Atoms	Z	Observed(°)	Ideal(°)
2	D	302	NAD	C2N-C3N-C4N	2.52	121.12	118.26
2	C	300	NAD	O4B-C4B-C5B	2.50	117.60	109.37
3	B	301	53K	C10-C11-C21	2.49	122.03	118.54
3	B	301	53K	C15-C14-N2	-2.49	116.98	120.96
3	C	301	53K	N2-N3-N1	-2.48	105.45	107.31
2	B	300	NAD	C3N-C7N-N7N	2.46	120.71	117.75
2	C	300	NAD	O5B-C5B-C4B	2.42	117.32	108.99
2	D	302	NAD	O2D-C2D-C1D	2.40	119.72	110.85
2	C	300	NAD	O2D-C2D-C1D	2.34	119.50	110.85
2	A	300	NAD	O5D-C5D-C4D	2.33	117.03	108.99
3	B	301	53K	C22-C21-C11	-2.33	118.36	120.83
2	B	300	NAD	O2B-C2B-C1B	2.31	119.38	110.85
2	B	300	NAD	O4B-C1B-C2B	-2.30	103.57	106.93
3	C	301	53K	C15-C14-N2	2.26	124.57	120.96
2	D	302	NAD	O2B-C2B-C1B	2.22	119.04	110.85
2	B	300	NAD	C2N-N1N-C1D	2.21	124.05	119.14
3	C	301	53K	C8-O1-C7	2.18	123.22	118.04
2	B	300	NAD	O4D-C1D-C2D	2.14	110.05	106.93
2	A	300	NAD	O7N-C7N-N7N	-2.13	119.55	122.58
2	A	300	NAD	O4B-C4B-C3B	-2.11	100.95	105.11
3	B	301	53K	C11-C12-N1	-2.10	109.08	112.17
2	A	300	NAD	O3D-C3D-C2D	2.07	118.52	111.82
3	A	301	53K	C1-C2-C7	-2.05	117.94	120.95
2	B	300	NAD	C4N-C3N-C7N	-2.02	115.62	121.04
2	B	300	NAD	O4B-C4B-C3B	-2.00	101.15	105.11

There are no chirality outliers.

All (55) torsion outliers are listed below:

Mol	Chain	Res	Type	Atoms
2	A	300	NAD	O4D-C1D-N1N-C2N
2	A	300	NAD	O4D-C1D-N1N-C6N
2	B	300	NAD	C5D-O5D-PN-O1N
2	B	300	NAD	O4D-C1D-N1N-C2N
2	B	300	NAD	O4D-C1D-N1N-C6N
2	B	300	NAD	C2D-C1D-N1N-C2N
2	B	300	NAD	C2D-C1D-N1N-C6N
2	C	300	NAD	O4B-C4B-C5B-O5B
2	C	300	NAD	O4D-C4D-C5D-O5D
2	C	300	NAD	O4D-C1D-N1N-C2N
2	C	300	NAD	O4D-C1D-N1N-C6N
2	D	302	NAD	C5D-O5D-PN-O1N

Continued on next page...

Continued from previous page...

Mol	Chain	Res	Type	Atoms
2	D	302	NAD	C5D-O5D-PN-O2N
2	D	302	NAD	O4D-C1D-N1N-C2N
3	A	301	53K	N2-C14-C15-C20
3	A	301	53K	N2-C14-C15-C16
3	B	301	53K	N2-C14-C15-C20
3	B	301	53K	N2-C14-C15-C16
3	C	301	53K	C13-C14-C15-C20
3	C	301	53K	N2-C14-C15-C20
3	C	301	53K	C13-C14-C15-C16
3	C	301	53K	N2-C14-C15-C16
2	A	300	NAD	O4D-C4D-C5D-O5D
2	A	300	NAD	C3D-C4D-C5D-O5D
2	C	300	NAD	C3B-C4B-C5B-O5B
2	C	300	NAD	C3D-C4D-C5D-O5D
2	B	300	NAD	C2N-C3N-C7N-N7N
2	B	300	NAD	C4N-C3N-C7N-N7N
2	B	300	NAD	O4D-C4D-C5D-O5D
2	B	300	NAD	C3D-C4D-C5D-O5D
3	A	301	53K	C13-C14-C15-C20
3	A	301	53K	C13-C14-C15-C16
2	A	300	NAD	O4B-C4B-C5B-O5B
3	B	301	53K	C13-C14-C15-C20
3	B	301	53K	C13-C14-C15-C16
2	A	300	NAD	PN-O3-PA-O5B
2	B	300	NAD	PN-O3-PA-O5B
2	D	302	NAD	PN-O3-PA-O5B
2	A	300	NAD	C5B-O5B-PA-O3
2	C	300	NAD	C5B-O5B-PA-O3
2	D	302	NAD	C5D-O5D-PN-O3
2	A	300	NAD	PA-O3-PN-O1N
2	D	302	NAD	PA-O3-PN-O1N
2	A	300	NAD	C5B-O5B-PA-O1A
2	B	300	NAD	O4B-C4B-C5B-O5B
2	B	300	NAD	C4B-C5B-O5B-PA
2	B	300	NAD	C4N-C3N-C7N-O7N
2	A	300	NAD	C5D-O5D-PN-O3
2	A	300	NAD	C2D-C1D-N1N-C6N
2	B	300	NAD	C5D-O5D-PN-O3
2	A	300	NAD	PA-O3-PN-O2N
2	D	302	NAD	PA-O3-PN-O2N
2	A	300	NAD	C5B-O5B-PA-O2A
2	A	300	NAD	C5D-O5D-PN-O1N

Continued on next page...

Continued from previous page...

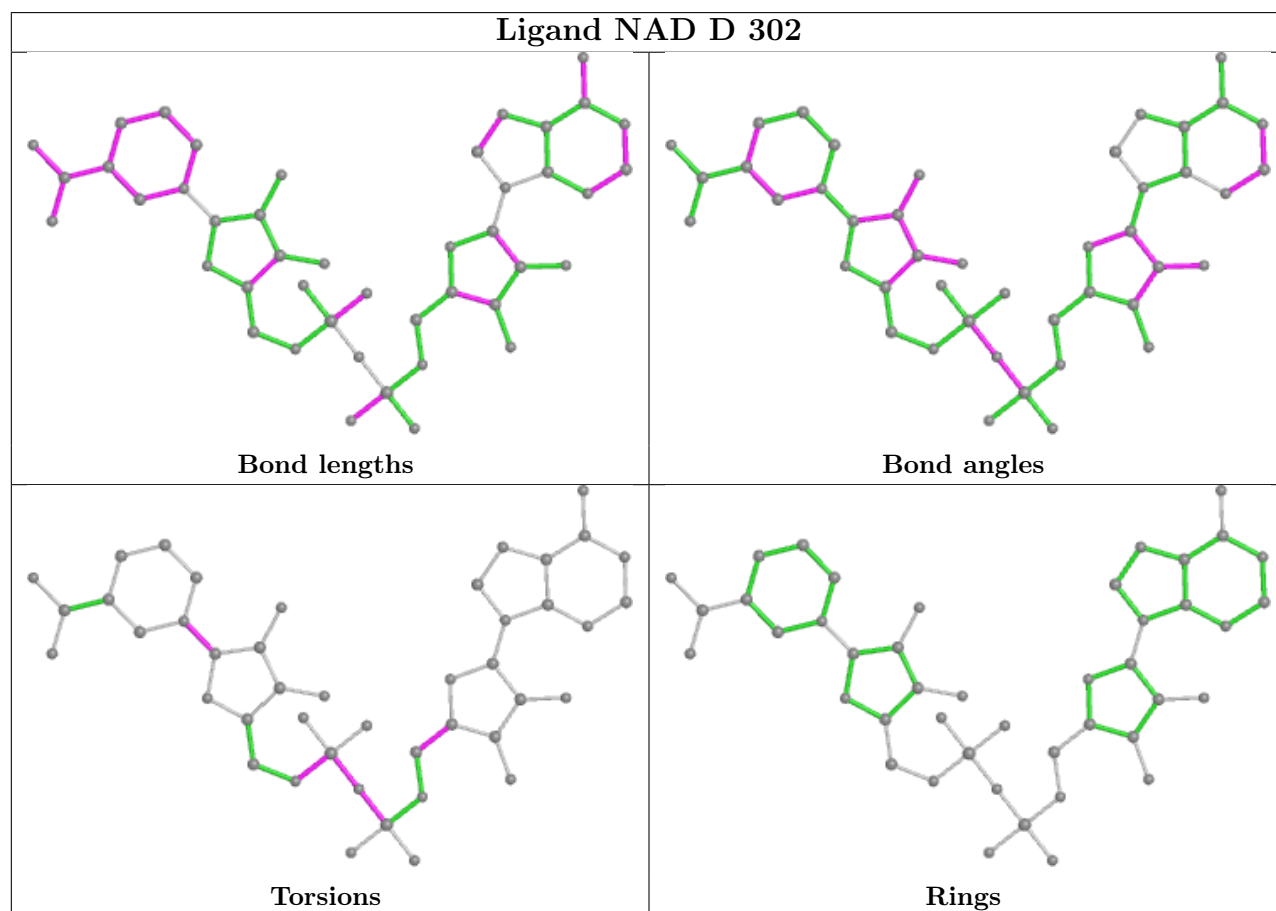
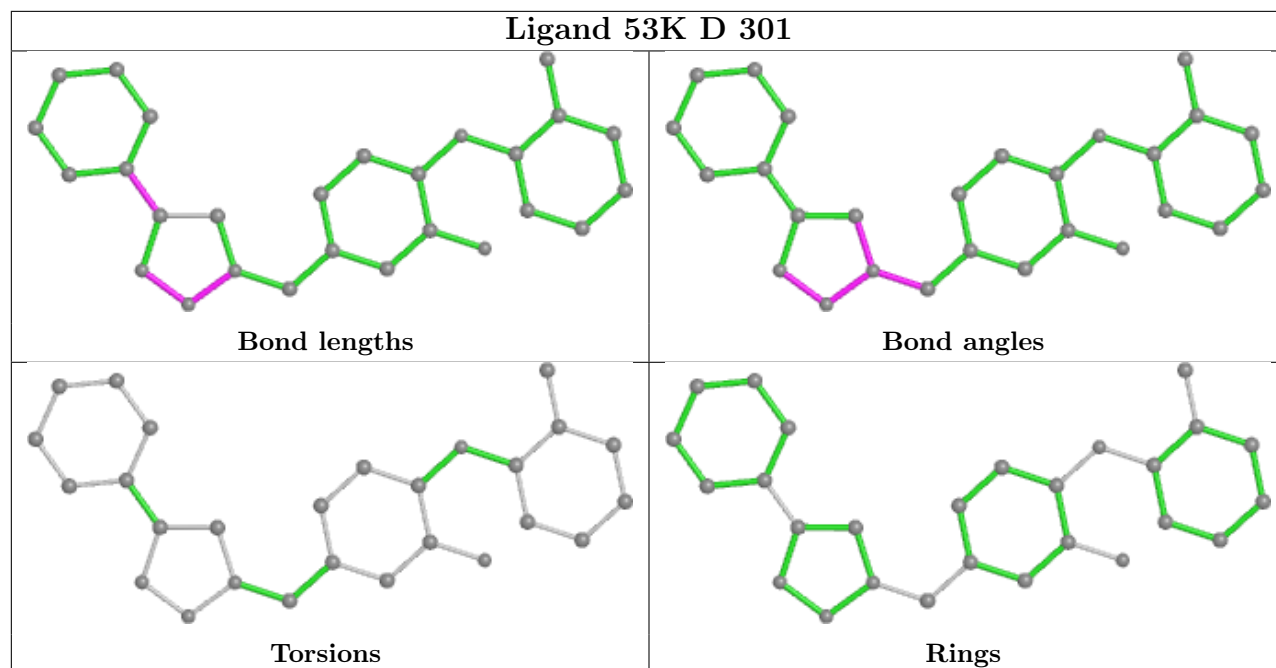
Mol	Chain	Res	Type	Atoms
2	D	302	NAD	O4B-C4B-C5B-O5B

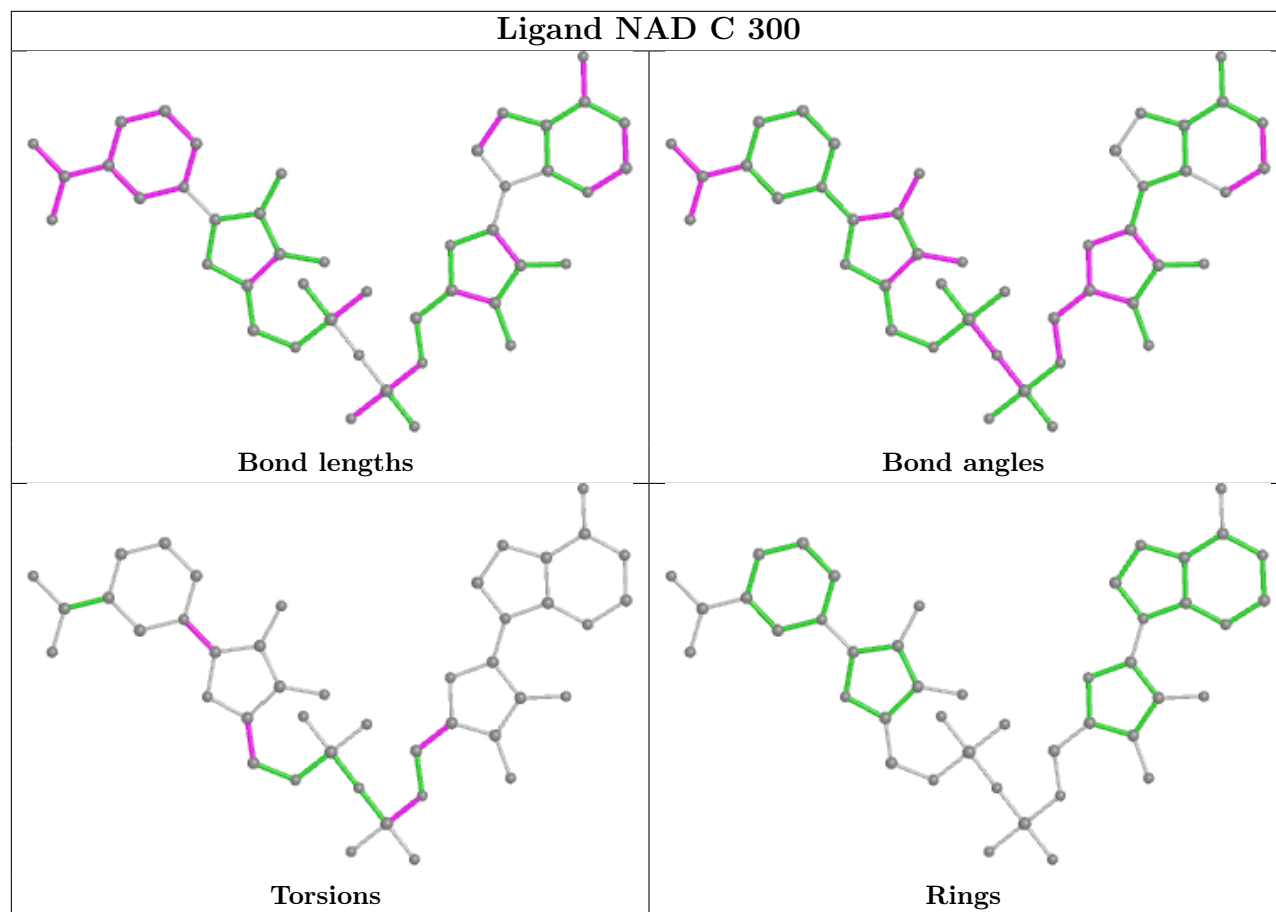
There are no ring outliers.

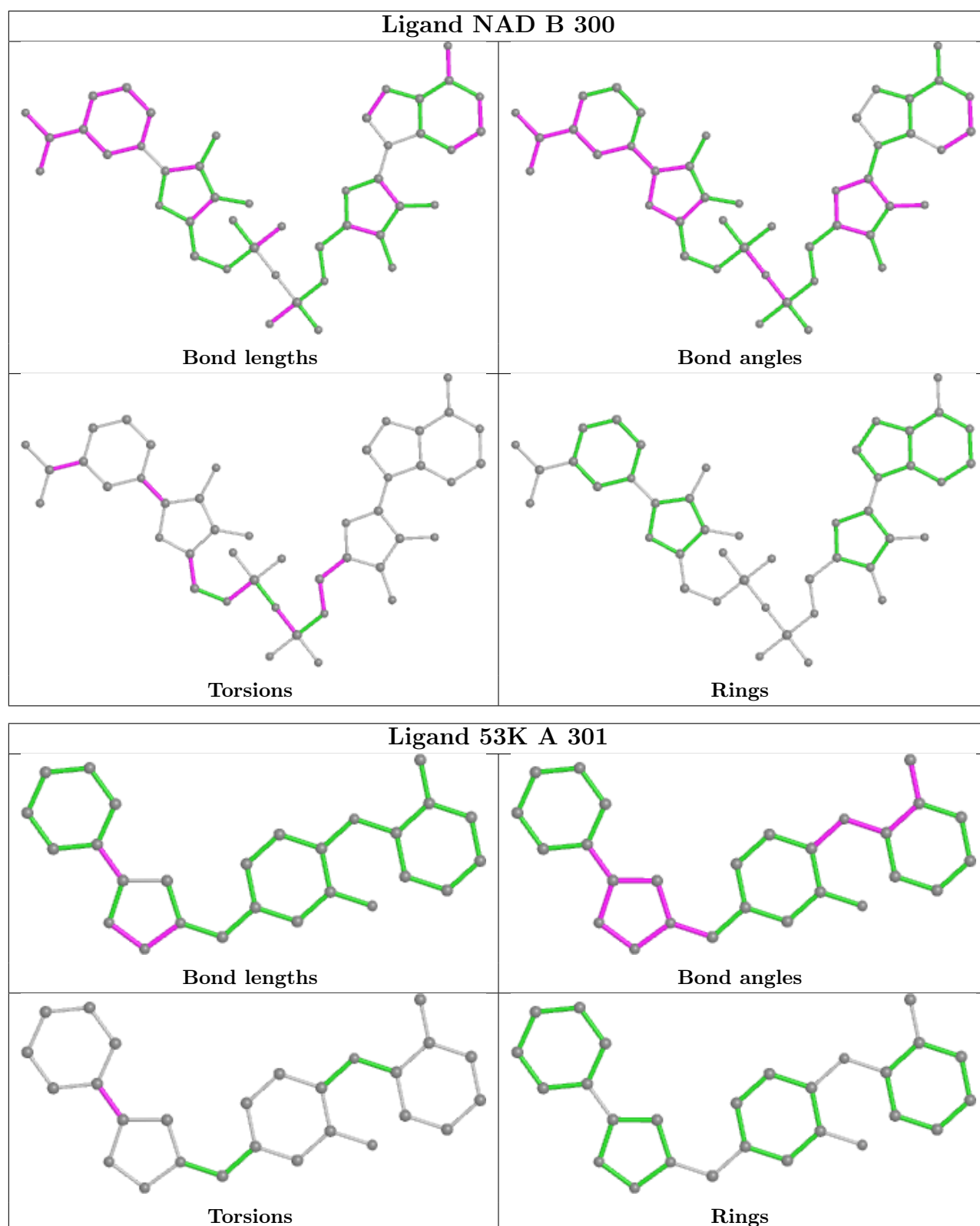
7 monomers are involved in 16 short contacts:

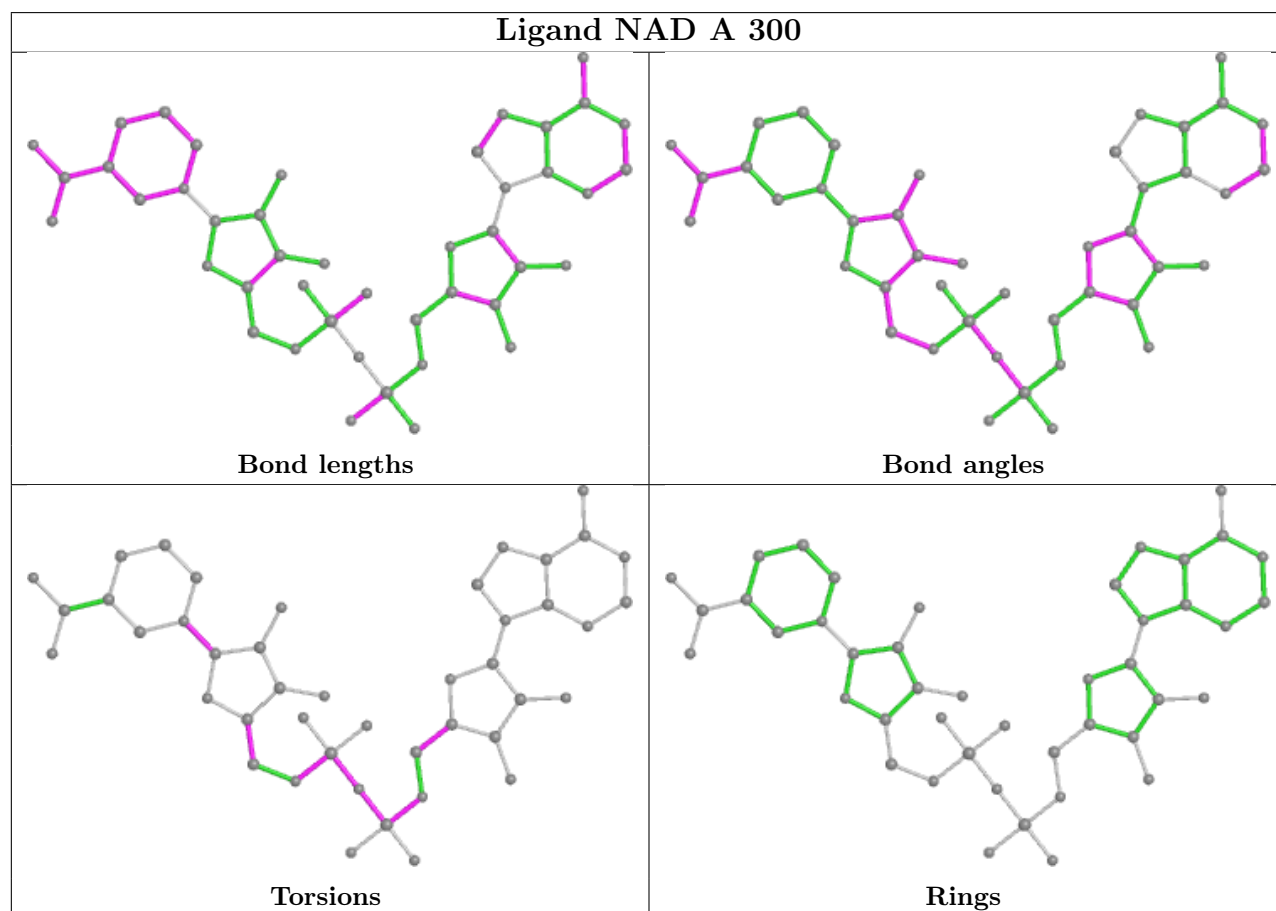
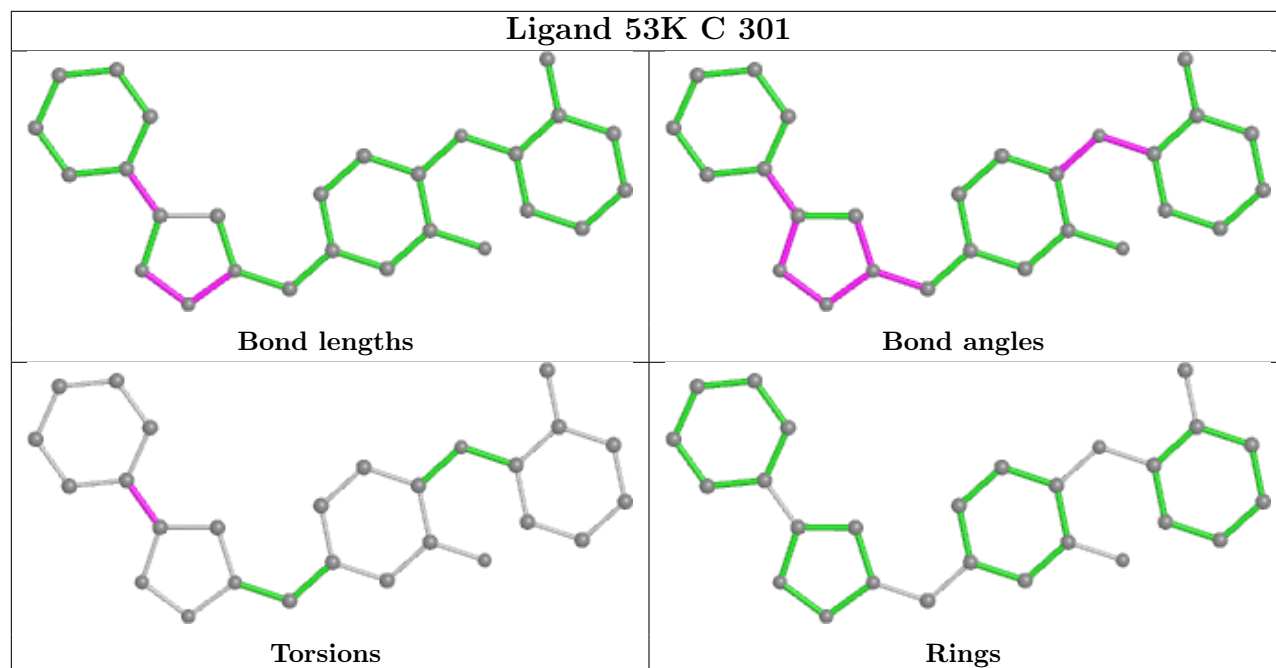
Mol	Chain	Res	Type	Clashes	Symm-Clashes
3	D	301	53K	1	0
2	D	302	NAD	2	0
2	C	300	NAD	2	0
3	A	301	53K	5	0
3	C	301	53K	4	0
2	A	300	NAD	3	0
3	B	301	53K	1	0

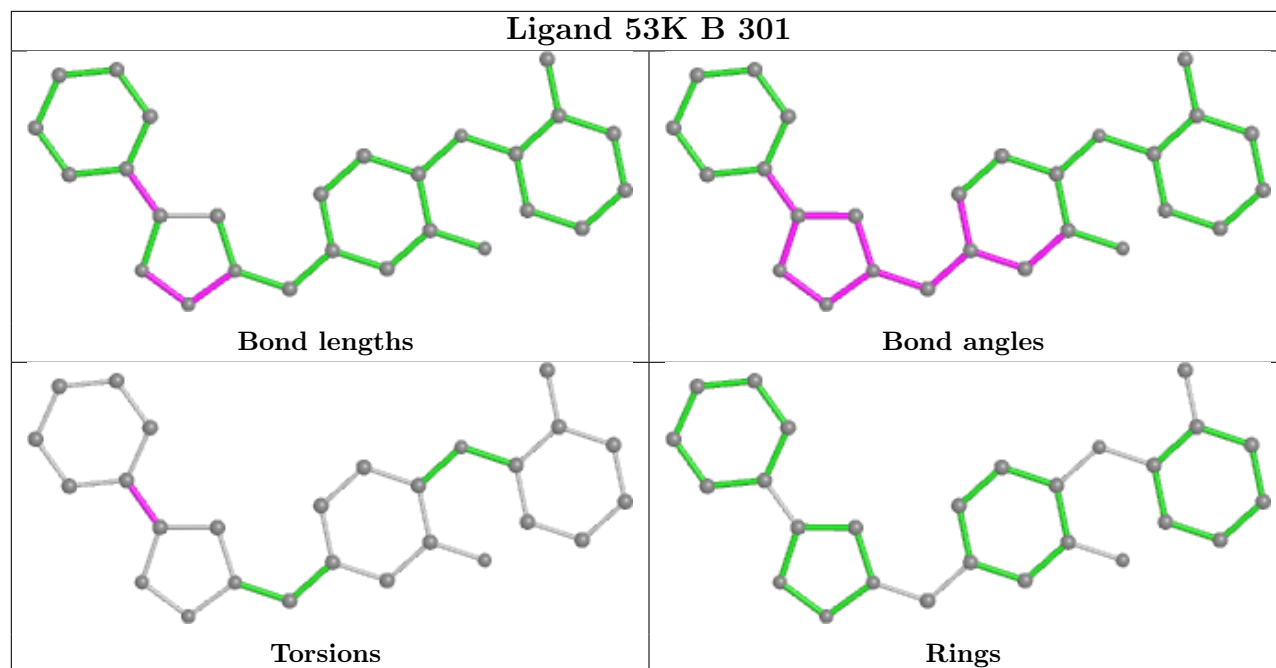
The following is a two-dimensional graphical depiction of Mogul quality analysis of bond lengths, bond angles, torsion angles, and ring geometry for all instances of the Ligand of Interest. In addition, ligands with molecular weight > 250 and outliers as shown on the validation Tables will also be included. For torsion angles, if less than 5% of the Mogul distribution of torsion angles is within 10 degrees of the torsion angle in question, then that torsion angle is considered an outlier. Any bond that is central to one or more torsion angles identified as an outlier by Mogul will be highlighted in the graph. For rings, the root-mean-square deviation (RMSD) between the ring in question and similar rings identified by Mogul is calculated over all ring torsion angles. If the average RMSD is greater than 60 degrees and the minimal RMSD between the ring in question and any Mogul-identified rings is also greater than 60 degrees, then that ring is considered an outlier. The outliers are highlighted in purple. The color gray indicates Mogul did not find sufficient equivalents in the CSD to analyse the geometry.











5.7 Other polymers [i](#)

There are no such residues in this entry.

5.8 Polymer linkage issues [i](#)

There are no chain breaks in this entry.

6 Fit of model and data [i](#)

6.1 Protein, DNA and RNA chains [i](#)

In the following table, the column labelled ‘#RSRZ> 2’ contains the number (and percentage) of RSRZ outliers, followed by percent RSRZ outliers for the chain as percentile scores relative to all X-ray entries and entries of similar resolution. The OWAB column contains the minimum, median, 95th percentile and maximum values of the occupancy-weighted average B-factor per residue. The column labelled ‘Q< 0.9’ lists the number of (and percentage) of residues with an average occupancy less than 0.9.

Mol	Chain	Analysed	<RSRZ>	#RSRZ>2	OWAB(Å ²)	Q<0.9
1	A	267/289 (92%)	-0.21	0 100 100	37, 59, 84, 98	1 (0%)
1	B	267/289 (92%)	-0.28	1 (0%) 92 92	37, 55, 75, 91	1 (0%)
1	C	267/289 (92%)	-0.18	0 100 100	37, 58, 87, 98	1 (0%)
1	D	267/289 (92%)	-0.16	4 (1%) 73 72	37, 58, 82, 96	0
All	All	1068/1156 (92%)	-0.21	5 (0%) 91 90	37, 57, 83, 98	3 (0%)

All (5) RSRZ outliers are listed below:

Mol	Chain	Res	Type	RSRZ
1	D	35	GLN	2.4
1	D	60	LEU	2.4
1	B	60	LEU	2.4
1	D	59	PRO	2.3
1	D	37	VAL	2.2

6.2 Non-standard residues in protein, DNA, RNA chains [i](#)

There are no non-standard protein/DNA/RNA residues in this entry.

6.3 Carbohydrates [i](#)

There are no monosaccharides in this entry.

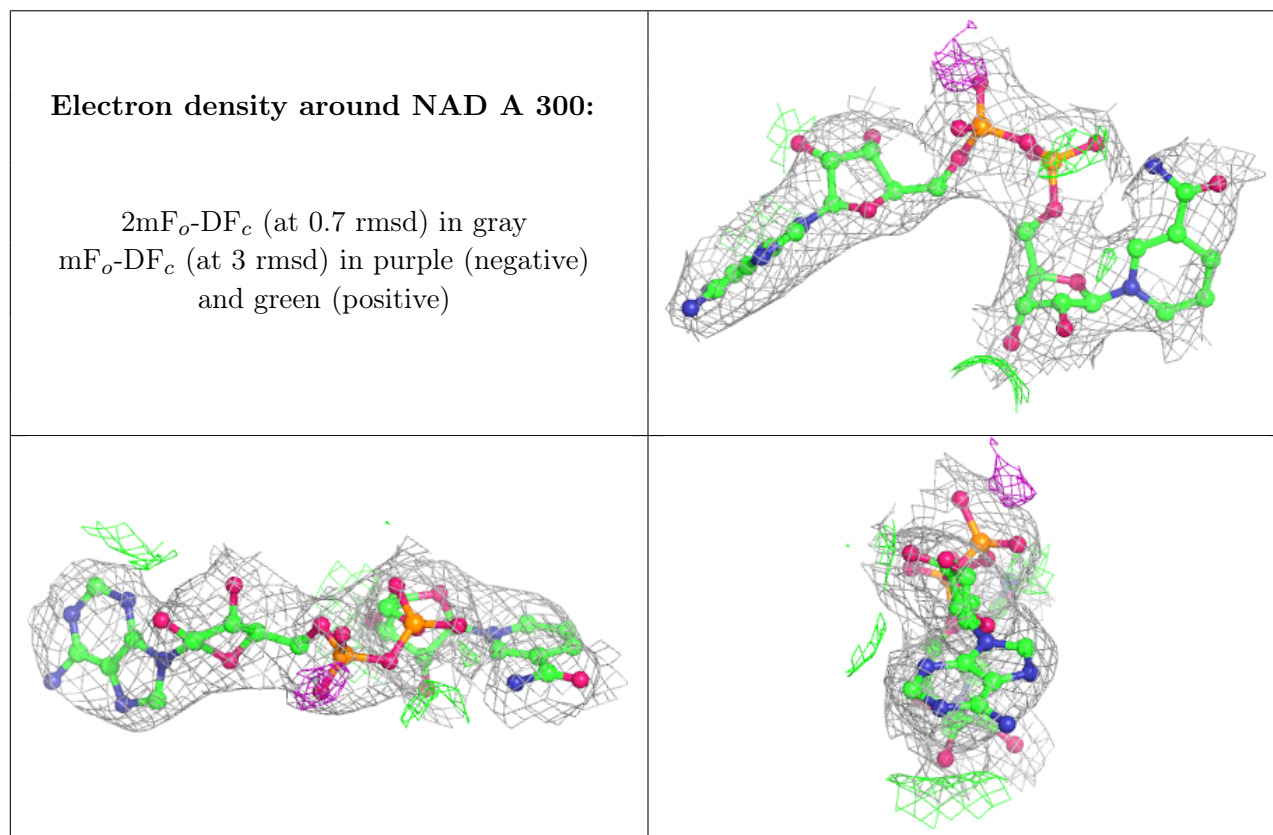
6.4 Ligands [i](#)

In the following table, the Atoms column lists the number of modelled atoms in the group and the number defined in the chemical component dictionary. The B-factors column lists the minimum,

median, 95th percentile and maximum values of B factors of atoms in the group. The column labelled 'Q<0.9' lists the number of atoms with occupancy less than 0.9.

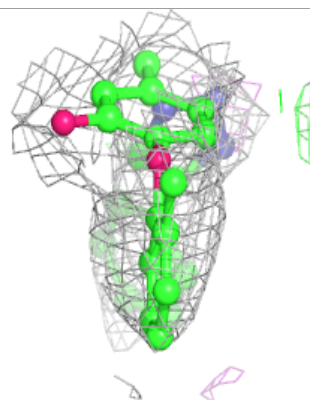
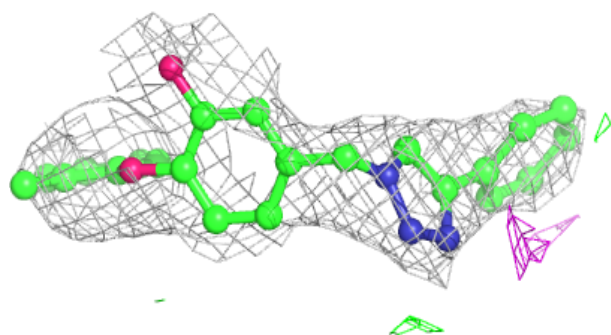
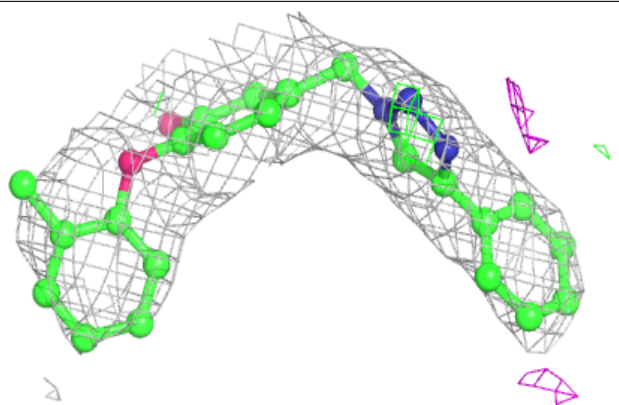
Mol	Type	Chain	Res	Atoms	RSCC	RSR	B-factors(Å ²)	Q<0.9
2	NAD	A	300	44/44	0.95	0.15	52,61,69,75	0
3	53K	A	301	27/27	0.95	0.25	64,74,82,84	0
3	53K	C	301	27/27	0.95	0.29	63,70,80,84	0
2	NAD	B	300	44/44	0.96	0.16	45,51,57,61	0
2	NAD	C	300	44/44	0.96	0.15	51,59,65,70	0
3	53K	B	301	27/27	0.97	0.19	45,54,59,62	0
2	NAD	D	302	44/44	0.97	0.16	46,55,65,72	0
3	53K	D	301	27/27	0.97	0.25	51,58,63,67	0

The following is a graphical depiction of the model fit to experimental electron density of all instances of the Ligand of Interest. In addition, ligands with molecular weight > 250 and outliers as shown on the geometry validation Tables will also be included. Each fit is shown from different orientation to approximate a three-dimensional view.

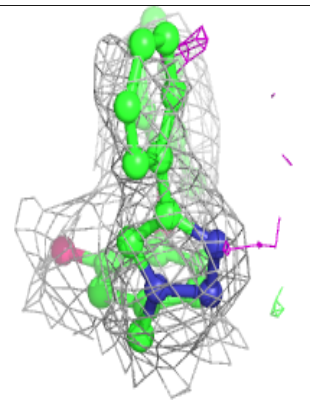
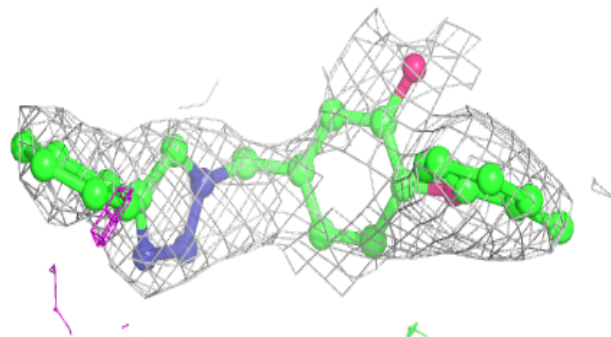
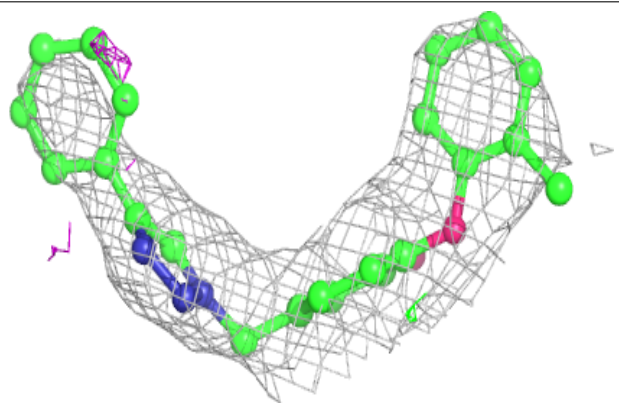


Electron density around 53K A 301:

$2mF_o-DF_c$ (at 0.7 rmsd) in gray
 mF_o-DF_c (at 3 rmsd) in purple (negative)
and green (positive)

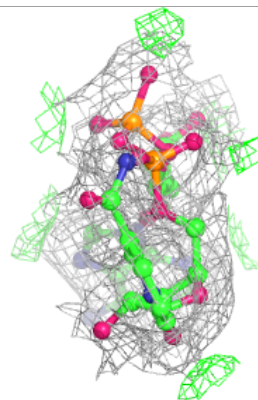
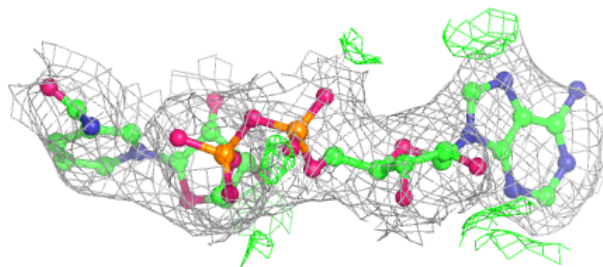
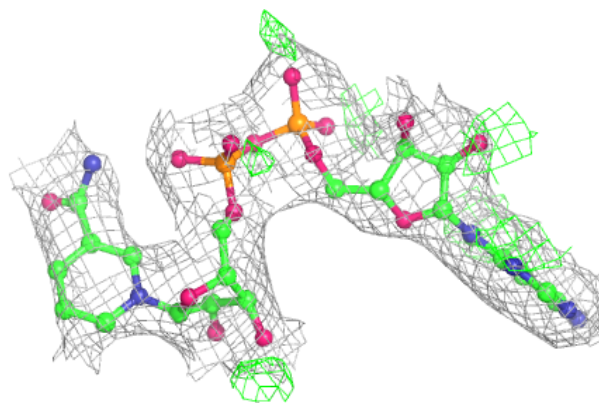
**Electron density around 53K C 301:**

$2mF_o-DF_c$ (at 0.7 rmsd) in gray
 mF_o-DF_c (at 3 rmsd) in purple (negative)
and green (positive)

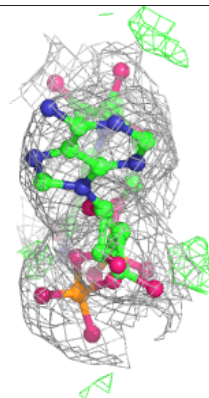
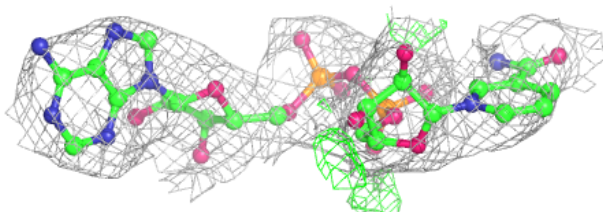
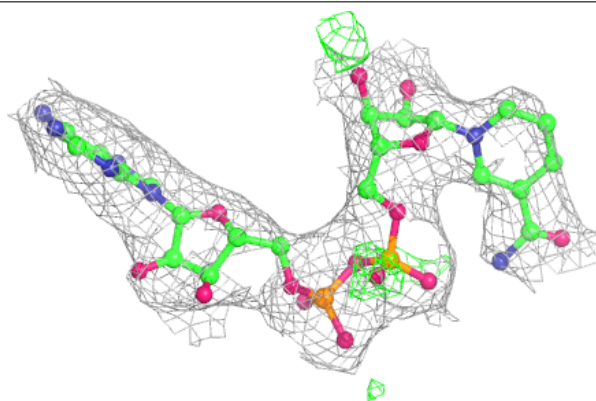


Electron density around NAD B 300:

$2mF_o-DF_c$ (at 0.7 rmsd) in gray
 mF_o-DF_c (at 3 rmsd) in purple (negative)
and green (positive)

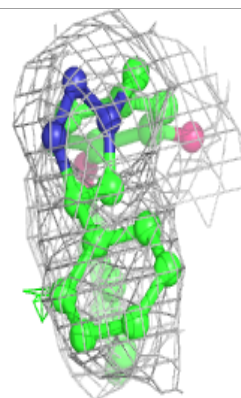
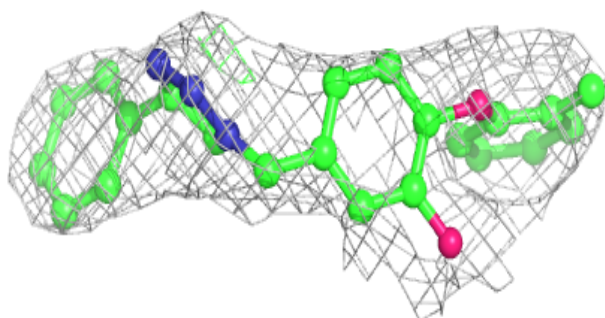
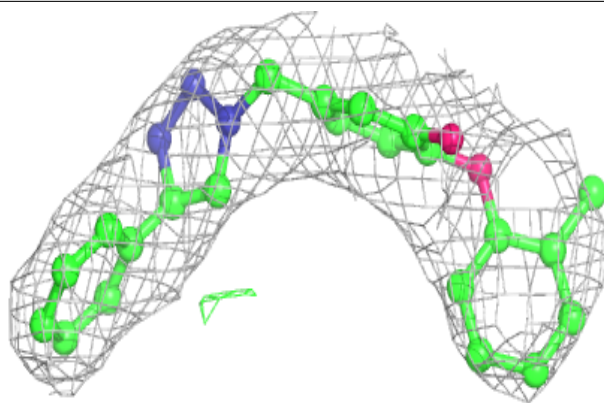
**Electron density around NAD C 300:**

$2mF_o-DF_c$ (at 0.7 rmsd) in gray
 mF_o-DF_c (at 3 rmsd) in purple (negative)
and green (positive)

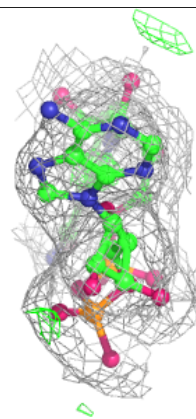
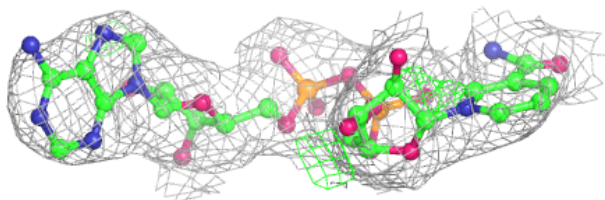
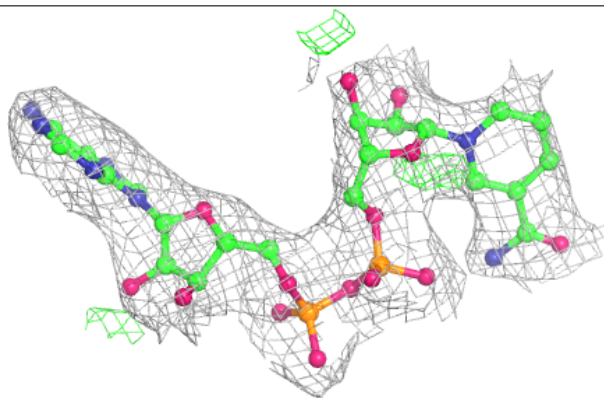


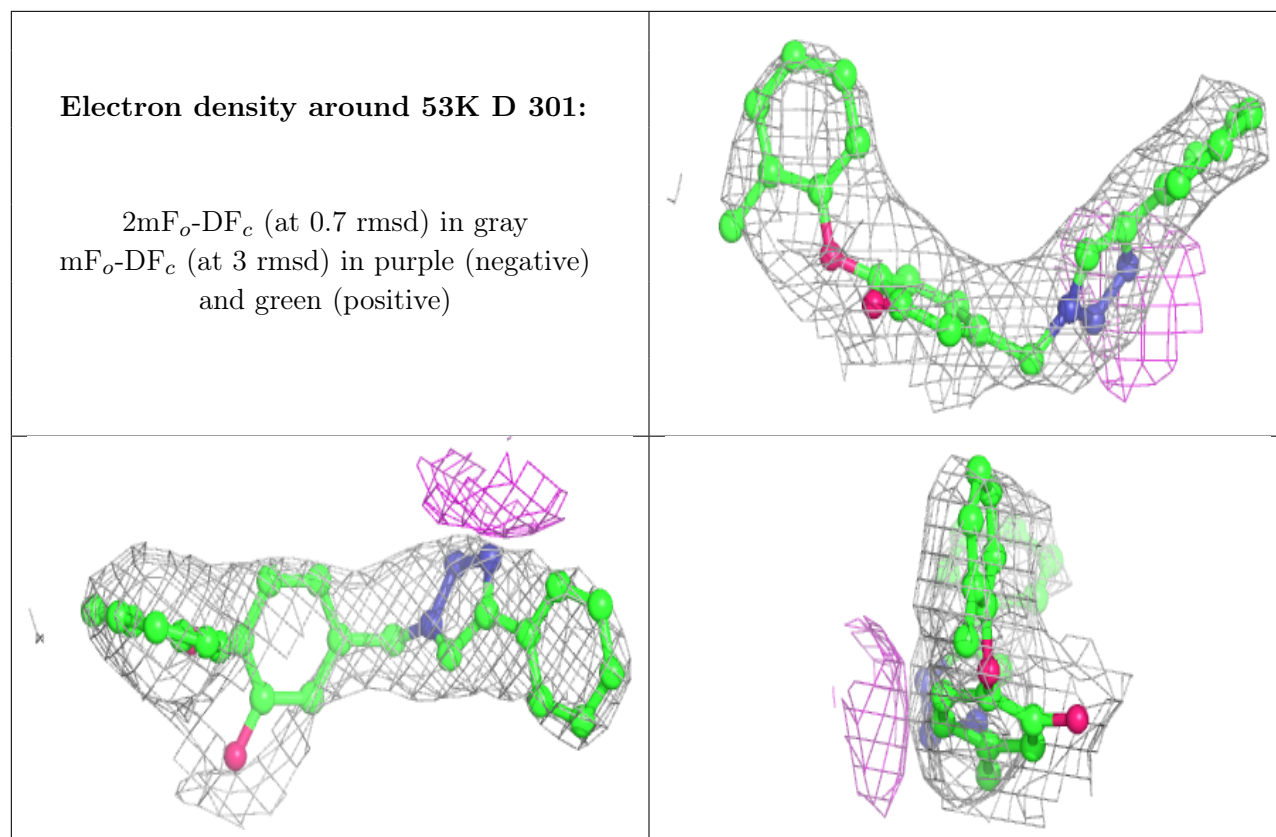
Electron density around 53K B 301:

$2mF_o-DF_c$ (at 0.7 rmsd) in gray
 mF_o-DF_c (at 3 rmsd) in purple (negative)
and green (positive)

**Electron density around NAD D 302:**

$2mF_o-DF_c$ (at 0.7 rmsd) in gray
 mF_o-DF_c (at 3 rmsd) in purple (negative)
and green (positive)





6.5 Other polymers [i](#)

There are no such residues in this entry.