



Full wwPDB X-ray Structure Validation Report ⓘ

Sep 26, 2023 – 07:01 PM EDT

PDB ID : 6CQL
Title : Crystal structure of F24 TCR -DR11-RQ13 peptide complex
Authors : Farenc, C.; Gras, S.; Rossjohn, J.
Deposited on : 2018-03-15
Resolution : 2.40 Å(reported)

This is a Full wwPDB X-ray Structure Validation Report for a publicly released PDB entry.

We welcome your comments at validation@mail.wwpdb.org

A user guide is available at

<https://www.wwpdb.org/validation/2017/XrayValidationReportHelp>

with specific help available everywhere you see the ⓘ symbol.

The types of validation reports are described at

<http://www.wwpdb.org/validation/2017/FAQs#types>.

The following versions of software and data (see [references ⓘ](#)) were used in the production of this report:

MolProbity : 4.02b-467
Mogul : 1.8.5 (274361), CSD as541be (2020)
Xtrriage (Phenix) : 1.13
EDS : 2.35.1
Percentile statistics : 20191225.v01 (using entries in the PDB archive December 25th 2019)
Refmac : 5.8.0158
CCP4 : 7.0.044 (Gargrove)
Ideal geometry (proteins) : Engh & Huber (2001)
Ideal geometry (DNA, RNA) : Parkinson et al. (1996)
Validation Pipeline (wwPDB-VP) : 2.35.1

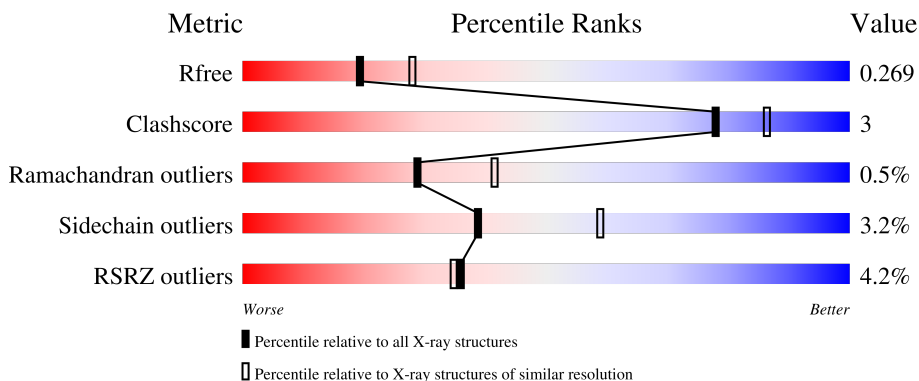
1 Overall quality at a glance i

The following experimental techniques were used to determine the structure:

X-RAY DIFFRACTION

The reported resolution of this entry is 2.40 Å.

Percentile scores (ranging between 0-100) for global validation metrics of the entry are shown in the following graphic. The table shows the number of entries on which the scores are based.



Metric	Whole archive (#Entries)	Similar resolution (#Entries, resolution range(Å))
R_{free}	130704	3907 (2.40-2.40)
Clashscore	141614	4398 (2.40-2.40)
Ramachandran outliers	138981	4318 (2.40-2.40)
Sidechain outliers	138945	4319 (2.40-2.40)
RSRZ outliers	127900	3811 (2.40-2.40)

The table below summarises the geometric issues observed across the polymeric chains and their fit to the electron density. The red, orange, yellow and green segments of the lower bar indicate the fraction of residues that contain outliers for ≥ 3 , 2, 1 and 0 types of geometric quality criteria respectively. A grey segment represents the fraction of residues that are not modelled. The numeric value for each fraction is indicated below the corresponding segment, with a dot representing fractions $\leq 5\%$. The upper red bar (where present) indicates the fraction of residues that have poor fit to the electron density. The numeric value is given above the bar.

Mol	Chain	Length	Quality of chain
1	A	182	<div style="display: flex; align-items: center;"> <div style="width: 3%; height: 10px; background-color: red; margin-right: 5px;"></div> <div style="width: 90%; height: 10px; background-color: green; margin-right: 5px;"></div> <div style="width: 7%; height: 10px; background-color: yellow; margin-right: 5px;"></div> <div style="width: 2%; height: 10px; background-color: grey;"></div> </div> <p style="margin-left: 20px;">90% 7% ..</p>
2	B	190	<div style="display: flex; align-items: center;"> <div style="width: 10%; height: 10px; background-color: red; margin-right: 5px;"></div> <div style="width: 87%; height: 10px; background-color: green; margin-right: 5px;"></div> <div style="width: 12%; height: 10px; background-color: yellow; margin-right: 5px;"></div> <div style="width: 1%; height: 10px; background-color: grey;"></div> </div> <p style="margin-left: 20px;">10% 87% 12% .</p>
3	C	13	<div style="display: flex; align-items: center;"> <div style="width: 85%; height: 10px; background-color: green; margin-right: 5px;"></div> <div style="width: 15%; height: 10px; background-color: yellow; margin-right: 5px;"></div> </div> <p style="margin-left: 20px;">85% 15%</p>
4	D	205	<div style="display: flex; align-items: center;"> <div style="width: 3%; height: 10px; background-color: red; margin-right: 5px;"></div> <div style="width: 85%; height: 10px; background-color: green; margin-right: 5px;"></div> <div style="width: 13%; height: 10px; background-color: yellow; margin-right: 5px;"></div> <div style="width: 1%; height: 10px; background-color: grey;"></div> </div> <p style="margin-left: 20px;">3% 85% 13% .</p>
5	E	245	<div style="display: flex; align-items: center;"> <div style="width: 3%; height: 10px; background-color: red; margin-right: 5px;"></div> <div style="width: 89%; height: 10px; background-color: green; margin-right: 5px;"></div> <div style="width: 10%; height: 10px; background-color: yellow; margin-right: 5px;"></div> </div> <p style="margin-left: 20px;">3% 89% 10%</p>

2 Entry composition [i](#)

There are 8 unique types of molecules in this entry. The entry contains 7018 atoms, of which 0 are hydrogens and 0 are deuteriums.

In the tables below, the ZeroOcc column contains the number of atoms modelled with zero occupancy, the AltConf column contains the number of residues with at least one atom in alternate conformation and the Trace column contains the number of residues modelled with at most 2 atoms.

- Molecule 1 is a protein called HLA class II histocompatibility antigen, DR alpha chain.

Mol	Chain	Residues	Atoms					ZeroOcc	AltConf	Trace
			Total	C	N	O	S			
1	A	178	1464	949	238	272	5	0	0	0

There is a discrepancy between the modelled and reference sequences:

Chain	Residue	Modelled	Actual	Comment	Reference
A	182	THR	ALA	conflict	UNP P01903

- Molecule 2 is a protein called HLA class II histocompatibility antigen, DRB1-11 beta chain.

Mol	Chain	Residues	Atoms					ZeroOcc	AltConf	Trace
			Total	C	N	O	S			
2	B	190	1566	988	274	299	5	0	0	0

- Molecule 3 is a protein called Peptide from Capsid protein p24.

Mol	Chain	Residues	Atoms				ZeroOcc	AltConf	Trace
			Total	C	N	O			
3	C	13	113	70	22	21	0	0	0

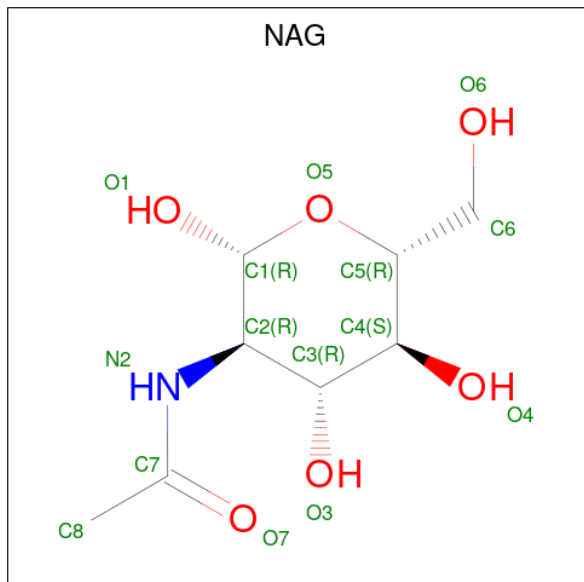
- Molecule 4 is a protein called F24 alpha chain.

Mol	Chain	Residues	Atoms					ZeroOcc	AltConf	Trace
			Total	C	N	O	S			
4	D	200	1580	993	259	320	8	0	4	0

- Molecule 5 is a protein called F24 beta Chain.

Mol	Chain	Residues	Atoms					ZeroOcc	AltConf	Trace
			Total	C	N	O	S			
5	E	244	1980	1254	338	380	8	0	1	0

- Molecule 6 is 2-acetamido-2-deoxy-beta-D-glucopyranose (three-letter code: NAG) (formula: $C_8H_{15}NO_6$).



Mol	Chain	Residues	Atoms				ZeroOcc	AltConf
6	A	1	Total	C	N	O	0	0
			14	8	1	5		
6	A	1	Total	C	N	O	0	0
			14	8	1	5		

- Molecule 7 is MAGNESIUM ION (three-letter code: MG) (formula: Mg).

Mol	Chain	Residues	Atoms		ZeroOcc	AltConf
7	A	1	Total	Mg	0	0
			1	1		
7	D	2	Total	Mg	0	0
			2	2		

- Molecule 8 is water.

Mol	Chain	Residues	Atoms		ZeroOcc	AltConf
8	A	82	Total	O	0	0
			82	82		
8	B	44	Total	O	0	0
			44	44		
8	C	12	Total	O	0	0
			12	12		
8	D	63	Total	O	0	0
			63	63		

Continued on next page...

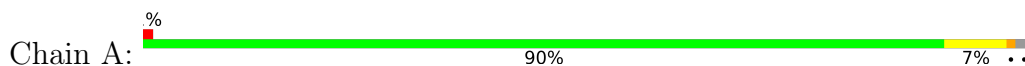
Continued from previous page...

Mol	Chain	Residues	Atoms		ZeroOcc	AltConf
8	E	83	Total	O	0	0
			83	83		

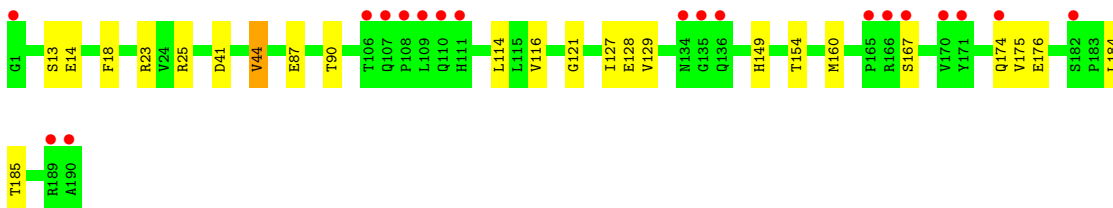
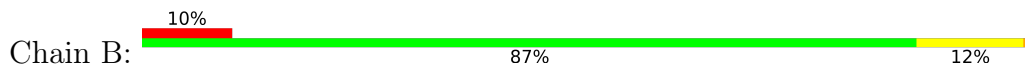
3 Residue-property plots [i](#)

These plots are drawn for all protein, RNA, DNA and oligosaccharide chains in the entry. The first graphic for a chain summarises the proportions of the various outlier classes displayed in the second graphic. The second graphic shows the sequence view annotated by issues in geometry and electron density. Residues are color-coded according to the number of geometric quality criteria for which they contain at least one outlier: green = 0, yellow = 1, orange = 2 and red = 3 or more. A red dot above a residue indicates a poor fit to the electron density ($RSRZ > 2$). Stretches of 2 or more consecutive residues without any outlier are shown as a green connector. Residues present in the sample, but not in the model, are shown in grey.

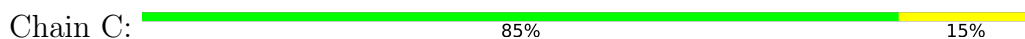
- Molecule 1: HLA class II histocompatibility antigen, DR alpha chain



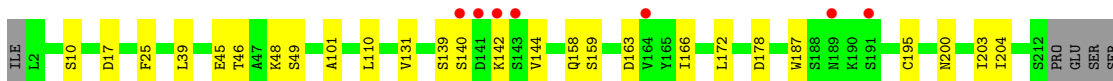
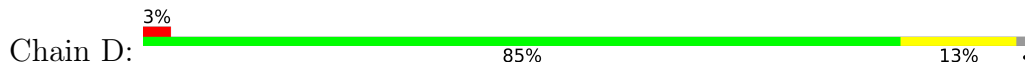
- Molecule 2: HLA class II histocompatibility antigen, DRB1-11 beta chain



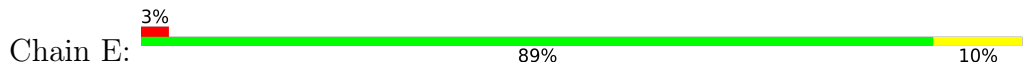
- Molecule 3: Peptide from Capsid protein p24

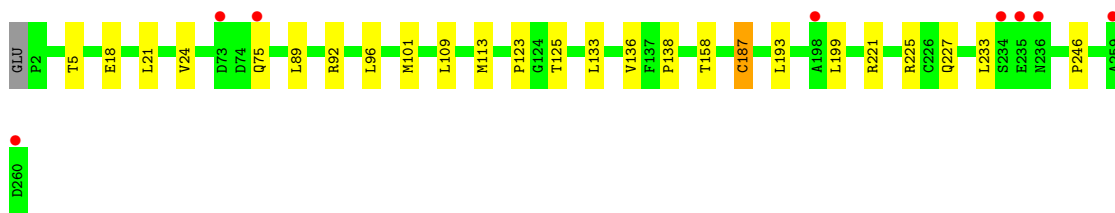


- Molecule 4: F24 alpha chain



- Molecule 5: F24 beta Chain





4 Data and refinement statistics

Property	Value	Source
Space group	P 21 21 2	Depositor
Cell constants a, b, c, α , β , γ	75.53Å 205.40Å 69.52Å 90.00° 90.00° 90.00°	Depositor
Resolution (Å)	48.78 – 2.40 37.14 – 2.40	Depositor EDS
% Data completeness (in resolution range)	100.0 (48.78-2.40) 100.0 (37.14-2.40)	Depositor EDS
R_{merge}	(Not available)	Depositor
R_{sym}	(Not available)	Depositor
$\langle I/\sigma(I) \rangle$ ¹	1.90 (at 2.39Å)	Xtrriage
Refinement program	BUSTER 2.10.0	Depositor
R, R_{free}	0.220 , 0.256 0.234 , 0.269	Depositor DCC
R_{free} test set	2182 reflections (5.05%)	wwPDB-VP
Wilson B-factor (Å ²)	47.3	Xtrriage
Anisotropy	0.323	Xtrriage
Bulk solvent k_{sol} (e/Å ³), B_{sol} (Å ²)	0.30 , 46.8	EDS
L-test for twinning ²	$\langle L \rangle = 0.47$, $\langle L^2 \rangle = 0.30$	Xtrriage
Estimated twinning fraction	No twinning to report.	Xtrriage
F_o, F_c correlation	0.93	EDS
Total number of atoms	7018	wwPDB-VP
Average B, all atoms (Å ²)	53.0	wwPDB-VP

Xtrriage's analysis on translational NCS is as follows: *The largest off-origin peak in the Patterson function is 3.51% of the height of the origin peak. No significant pseudotranslation is detected.*

¹Intensities estimated from amplitudes.

²Theoretical values of $\langle |L| \rangle$, $\langle L^2 \rangle$ for acentric reflections are 0.5, 0.333 respectively for untwinned datasets, and 0.375, 0.2 for perfectly twinned datasets.

5 Model quality [i](#)

5.1 Standard geometry [i](#)

Bond lengths and bond angles in the following residue types are not validated in this section: NAG, MG

The Z score for a bond length (or angle) is the number of standard deviations the observed value is removed from the expected value. A bond length (or angle) with $|Z| > 5$ is considered an outlier worth inspection. RMSZ is the root-mean-square of all Z scores of the bond lengths (or angles).

Mol	Chain	Bond lengths		Bond angles	
		RMSZ	# Z >5	RMSZ	# Z >5
1	A	0.37	0/1509	0.63	0/2058
2	B	0.36	0/1611	0.63	0/2189
3	C	0.34	0/114	0.60	0/149
4	D	0.37	0/1629	0.65	0/2208
5	E	0.35	0/2034	0.62	0/2764
All	All	0.36	0/6897	0.63	0/9368

There are no bond length outliers.

There are no bond angle outliers.

There are no chirality outliers.

There are no planarity outliers.

5.2 Too-close contacts [i](#)

In the following table, the Non-H and H(model) columns list the number of non-hydrogen atoms and hydrogen atoms in the chain respectively. The H(added) column lists the number of hydrogen atoms added and optimized by MolProbity. The Clashes column lists the number of clashes within the asymmetric unit, whereas Symm-Clashes lists symmetry-related clashes.

Mol	Chain	Non-H	H(model)	H(added)	Clashes	Symm-Clashes
1	A	1464	0	1399	10	0
2	B	1566	0	1451	10	0
3	C	113	0	111	2	0
4	D	1580	0	1503	9	0
5	E	1980	0	1876	13	0
6	A	28	0	26	1	0
7	A	1	0	0	0	0
7	D	2	0	0	0	0

Continued on next page...

Continued from previous page...

Mol	Chain	Non-H	H(model)	H(added)	Clashes	Symm-Clashes
8	A	82	0	0	0	0
8	B	44	0	0	0	0
8	C	12	0	0	0	0
8	D	63	0	0	0	0
8	E	83	0	0	0	0
All	All	7018	0	6366	38	0

The all-atom clashscore is defined as the number of clashes found per 1000 atoms (including hydrogen atoms). The all-atom clashscore for this structure is 3.

All (38) close contacts within the same asymmetric unit are listed below, sorted by their clash magnitude.

Atom-1	Atom-2	Interatomic distance (Å)	Clash overlap (Å)
2:B:18:PHE:HB2	2:B:23:ARG:HB3	1.80	0.63
2:B:129:VAL:HG13	2:B:175:VAL:HG22	1.80	0.63
4:D:172:LEU:HB3	5:E:187:CYS:HB3	1.80	0.63
2:B:174:GLN:HG2	2:B:185:THR:HG22	1.80	0.62
1:A:118:ASN:HB2	1:A:166:GLU:HB2	1.84	0.60
1:A:167:HIS:HD2	1:A:169:GLY:H	1.49	0.59
1:A:167:HIS:CD2	1:A:169:GLY:H	2.25	0.54
1:A:9:GLN:HB3	2:B:13:SER:HB2	1.90	0.53
5:E:75:GLN:HG3	5:E:92:ARG:HB3	1.88	0.53
3:C:97:GLU:OE2	5:E:109:LEU:HB3	2.10	0.52
5:E:225:ARG:HE	5:E:227:GLN:HE21	1.57	0.51
1:A:87:PRO:HB3	1:A:112:PHE:HB3	1.96	0.48
4:D:49:SER:HB3	5:E:123:PRO:HA	1.95	0.48
1:A:62:ASN:HD21	3:C:95:ARG:HA	1.80	0.47
2:B:128:GLU:HB2	2:B:176:GLU:HG2	1.96	0.47
4:D:159:SER:HA	4:D:166:ILE:HD12	1.95	0.47
1:A:24:PHE:HB3	1:A:31:ILE:HD12	1.97	0.47
5:E:18:GLU:HG3	5:E:92:ARG:HA	1.97	0.46
5:E:138:PRO:HD3	5:E:246:PRO:HB3	1.97	0.46
5:E:133:LEU:HB3	5:E:233:LEU:HD11	1.99	0.45
1:A:138:LEU:HB2	1:A:146:ARG:HB2	1.98	0.44
2:B:116:VAL:HG22	2:B:160:MET:HG2	1.99	0.44
1:A:166:GLU:HB3	6:A:202:NAG:H83	2.00	0.44
4:D:25:PHE:CD2	4:D:39:LEU:HD13	2.52	0.44
4:D:144:VAL:HG12	4:D:187:TRP:HB3	2.00	0.44
4:D:139:SER:HB3	4:D:140:SER:HB2	1.99	0.44
4:D:131:VAL:HG12	4:D:195:CYS:HB3	2.00	0.43
5:E:21:LEU:HD12	5:E:89:LEU:HD23	2.01	0.43

Continued on next page...

Continued from previous page...

Atom-1	Atom-2	Interatomic distance (Å)	Clash overlap (Å)
2:B:41:ASP:HB3	2:B:44:VAL:HG13	2.01	0.42
5:E:75:GLN:HE21	5:E:92:ARG:HD3	1.83	0.42
2:B:114:LEU:HG	2:B:160:MET:HB3	2.03	0.41
5:E:5:THR:HB	5:E:24:VAL:HB	2.02	0.41
2:B:121:GLY:HA2	2:B:154:THR:HB	2.02	0.41
4:D:101:ALA:HB1	4:D:110:LEU:HB3	2.03	0.41
1:A:8:ILE:HG12	2:B:14:GLU:HG2	2.03	0.41
5:E:21:LEU:HD22	5:E:125:THR:HG21	2.02	0.40
4:D:45:GLU:HB2	4:D:48:LYS:HD2	2.04	0.40
5:E:136:VAL:HG12	5:E:246:PRO:HB2	2.02	0.40

There are no symmetry-related clashes.

5.3 Torsion angles

5.3.1 Protein backbone

In the following table, the Percentiles column shows the percent Ramachandran outliers of the chain as a percentile score with respect to all X-ray entries followed by that with respect to entries of similar resolution.

The Analysed column shows the number of residues for which the backbone conformation was analysed, and the total number of residues.

Mol	Chain	Analysed	Favoured	Allowed	Outliers	Percentiles	
1	A	176/182 (97%)	172 (98%)	4 (2%)	0	100	100
2	B	188/190 (99%)	175 (93%)	11 (6%)	2 (1%)	14	20
3	C	11/13 (85%)	11 (100%)	0	0	100	100
4	D	202/205 (98%)	192 (95%)	8 (4%)	2 (1%)	15	23
5	E	243/245 (99%)	230 (95%)	13 (5%)	0	100	100
All	All	820/835 (98%)	780 (95%)	36 (4%)	4 (0%)	29	41

All (4) Ramachandran outliers are listed below:

Mol	Chain	Res	Type
2	B	87	GLU
2	B	167	SER
4	D	46	THR
4	D	178	ASP

5.3.2 Protein sidechains [i](#)

In the following table, the Percentiles column shows the percent sidechain outliers of the chain as a percentile score with respect to all X-ray entries followed by that with respect to entries of similar resolution.

The Analysed column shows the number of residues for which the sidechain conformation was analysed, and the total number of residues.

Mol	Chain	Analysed	Rotameric	Outliers	Percentiles	
1	A	163/167 (98%)	161 (99%)	2 (1%)	71	85
2	B	170/173 (98%)	164 (96%)	6 (4%)	36	55
3	C	11/11 (100%)	11 (100%)	0	100	100
4	D	181/182 (100%)	172 (95%)	9 (5%)	24	40
5	E	219/219 (100%)	211 (96%)	8 (4%)	34	53
All	All	744/752 (99%)	719 (97%)	25 (3%)	39	56

All (25) residues with a non-rotameric sidechain are listed below:

Mol	Chain	Res	Type
1	A	62	ASN
1	A	162	ASP
2	B	25	ARG
2	B	44	VAL
2	B	90	THR
2	B	127	ILE
2	B	149	HIS
2	B	184	LEU
4	D	10	SER
4	D	17[A]	ASP
4	D	17[B]	ASP
4	D	142	LYS
4	D	158	GLN
4	D	163	ASP
4	D	200	ASN
4	D	203	ILE
4	D	204	ILE
5	E	96	LEU
5	E	101	MET
5	E	113	MET
5	E	158	THR
5	E	187	CYS
5	E	193	LEU

Continued on next page...

Continued from previous page...

Mol	Chain	Res	Type
5	E	199	LEU
5	E	221	ARG

Sometimes sidechains can be flipped to improve hydrogen bonding and reduce clashes. All (7) such sidechains are listed below:

Mol	Chain	Res	Type
1	A	62	ASN
1	A	167	HIS
2	B	113	ASN
2	B	156	GLN
4	D	77	ASN
5	E	75	GLN
5	E	227	GLN

5.3.3 RNA [i](#)

There are no RNA molecules in this entry.

5.4 Non-standard residues in protein, DNA, RNA chains [i](#)

There are no non-standard protein/DNA/RNA residues in this entry.

5.5 Carbohydrates [i](#)

There are no monosaccharides in this entry.

5.6 Ligand geometry [i](#)

Of 5 ligands modelled in this entry, 3 are monoatomic - leaving 2 for Mogul analysis.

In the following table, the Counts columns list the number of bonds (or angles) for which Mogul statistics could be retrieved, the number of bonds (or angles) that are observed in the model and the number of bonds (or angles) that are defined in the Chemical Component Dictionary. The Link column lists molecule types, if any, to which the group is linked. The Z score for a bond length (or angle) is the number of standard deviations the observed value is removed from the expected value. A bond length (or angle) with $|Z| > 2$ is considered an outlier worth inspection. RMSZ is the root-mean-square of all Z scores of the bond lengths (or angles).

Mol	Type	Chain	Res	Link	Bond lengths			Bond angles		
					Counts	RMSZ	# Z > 2	Counts	RMSZ	# Z > 2
6	NAG	A	202	1	14,14,15	1.98	4 (28%)	17,19,21	2.09	6 (35%)
6	NAG	A	201	1	14,14,15	1.92	4 (28%)	17,19,21	1.84	3 (17%)

In the following table, the Chirals column lists the number of chiral outliers, the number of chiral centers analysed, the number of these observed in the model and the number defined in the Chemical Component Dictionary. Similar counts are reported in the Torsion and Rings columns. '-' means no outliers of that kind were identified.

Mol	Type	Chain	Res	Link	Chirals	Torsions	Rings
6	NAG	A	202	1	-	1/6/23/26	0/1/1/1
6	NAG	A	201	1	-	2/6/23/26	0/1/1/1

All (8) bond length outliers are listed below:

Mol	Chain	Res	Type	Atoms	Z	Observed(Å)	Ideal(Å)
6	A	202	NAG	O5-C1	4.60	1.51	1.43
6	A	201	NAG	O5-C1	4.33	1.50	1.43
6	A	201	NAG	C7-N2	3.19	1.45	1.34
6	A	202	NAG	C7-N2	3.17	1.45	1.34
6	A	202	NAG	C3-C2	-2.37	1.47	1.52
6	A	202	NAG	C4-C3	-2.29	1.46	1.52
6	A	201	NAG	C3-C2	-2.22	1.47	1.52
6	A	201	NAG	C4-C3	-2.17	1.46	1.52

All (9) bond angle outliers are listed below:

Mol	Chain	Res	Type	Atoms	Z	Observed(°)	Ideal(°)
6	A	202	NAG	C3-C4-C5	3.98	117.34	110.24
6	A	201	NAG	C3-C4-C5	3.96	117.31	110.24
6	A	202	NAG	C1-O5-C5	3.56	117.02	112.19
6	A	201	NAG	O5-C5-C6	3.45	112.61	107.20
6	A	202	NAG	O5-C5-C6	3.05	111.99	107.20
6	A	202	NAG	C2-N2-C7	3.01	127.20	122.90
6	A	202	NAG	O5-C5-C4	2.88	117.82	110.83
6	A	202	NAG	C1-C2-N2	2.62	114.97	110.49
6	A	201	NAG	O5-C5-C4	2.32	116.46	110.83

There are no chirality outliers.

All (3) torsion outliers are listed below:

Mol	Chain	Res	Type	Atoms
6	A	202	NAG	C1-C2-N2-C7
6	A	201	NAG	C1-C2-N2-C7
6	A	201	NAG	C3-C2-N2-C7

There are no ring outliers.

1 monomer is involved in 1 short contact:

Mol	Chain	Res	Type	Clashes	Symm-Clashes
6	A	202	NAG	1	0

5.7 Other polymers [i](#)

There are no such residues in this entry.

5.8 Polymer linkage issues [i](#)

There are no chain breaks in this entry.

6 Fit of model and data

6.1 Protein, DNA and RNA chains

In the following table, the column labelled ‘#RSRZ > 2’ contains the number (and percentage) of RSRZ outliers, followed by percent RSRZ outliers for the chain as percentile scores relative to all X-ray entries and entries of similar resolution. The OWAB column contains the minimum, median, 95th percentile and maximum values of the occupancy-weighted average B-factor per residue. The column labelled ‘Q < 0.9’ lists the number of (and percentage) of residues with an average occupancy less than 0.9.

Mol	Chain	Analysed	<RSRZ>	#RSRZ>2	OWAB(Å ²)	Q<0.9
1	A	178/182 (97%)	0.01	1 (0%) 89 88	32, 46, 70, 91	0
2	B	190/190 (100%)	0.55	19 (10%) 7 6	28, 57, 90, 110	0
3	C	13/13 (100%)	0.17	0 100 100	31, 36, 56, 68	0
4	D	200/205 (97%)	0.05	7 (3%) 44 43	30, 49, 82, 94	1 (0%)
5	E	244/245 (99%)	0.03	8 (3%) 46 45	28, 48, 77, 96	4 (1%)
All	All	825/835 (98%)	0.15	35 (4%) 36 35	28, 50, 82, 110	5 (0%)

All (35) RSRZ outliers are listed below:

Mol	Chain	Res	Type	RSRZ
2	B	109	LEU	9.1
2	B	110	GLN	6.9
5	E	260	ASP	6.2
2	B	167	SER	6.1
4	D	141	ASP	5.9
2	B	107	GLN	5.6
2	B	108	PRO	5.2
5	E	235	GLU	5.0
4	D	191	SER	4.9
5	E	198	ALA	4.1
2	B	189	ARG	4.0
2	B	170	VAL	3.4
2	B	111	HIS	3.4
5	E	236	ASN	3.4
4	D	140	SER	3.3
2	B	1	GLY	3.2
2	B	171	TYR	3.0
2	B	165	PRO	3.0
5	E	75	GLN	2.9
2	B	106	THR	2.9

Continued on next page...

Continued from previous page...

Mol	Chain	Res	Type	RSRZ
2	B	174	GLN	2.9
2	B	190	ALA	2.8
5	E	73	ASP	2.8
2	B	134	ASN	2.7
2	B	166	ARG	2.6
5	E	234	SER	2.6
4	D	143	SER	2.5
4	D	189	ASN	2.2
2	B	135	GLY	2.2
5	E	259	ALA	2.2
1	A	51	PHE	2.2
2	B	136	GLN	2.1
4	D	142	LYS	2.1
4	D	164	VAL	2.1
2	B	182	SER	2.1

6.2 Non-standard residues in protein, DNA, RNA chains [i](#)

There are no non-standard protein/DNA/RNA residues in this entry.

6.3 Carbohydrates [i](#)

There are no monosaccharides in this entry.

6.4 Ligands [i](#)

In the following table, the Atoms column lists the number of modelled atoms in the group and the number defined in the chemical component dictionary. The B-factors column lists the minimum, median, 95th percentile and maximum values of B factors of atoms in the group. The column labelled 'Q< 0.9' lists the number of atoms with occupancy less than 0.9.

Mol	Type	Chain	Res	Atoms	RSCC	RSR	B-factors(Å ²)	Q<0.9
6	NAG	A	201	14/15	0.76	0.38	94,97,98,98	0
6	NAG	A	202	14/15	0.84	0.23	72,73,75,76	0
7	MG	D	302	1/1	0.92	0.07	63,63,63,63	0
7	MG	D	301	1/1	0.94	0.12	56,56,56,56	0
7	MG	A	203	1/1	0.96	0.22	57,57,57,57	0

6.5 Other polymers [i](#)

There are no such residues in this entry.