



Full wwPDB X-ray Structure Validation Report ⓘ

Oct 10, 2021 – 08:01 PM EDT

PDB ID : 3CRV
Title : XPD_Helicase
Authors : Fan, L.; Arvai, A.S.; Tainer, J.A.
Deposited on : 2008-04-07
Resolution : 2.00 Å(reported)

This is a Full wwPDB X-ray Structure Validation Report for a publicly released PDB entry.

We welcome your comments at validation@mail.wwpdb.org

A user guide is available at

<https://www.wwpdb.org/validation/2017/XrayValidationReportHelp>

with specific help available everywhere you see the ⓘ symbol.

The following versions of software and data (see [references ⓘ](#)) were used in the production of this report:

MolProbity : 4.02b-467
Mogul : 1.8.5 (274361), CSD as541be (2020)
Xtrriage (Phenix) : 1.13
EDS : 2.23.2
Percentile statistics : 20191225.v01 (using entries in the PDB archive December 25th 2019)
Refmac : 5.8.0158
CCP4 : 7.0.044 (Gargrove)
Ideal geometry (proteins) : Engh & Huber (2001)
Ideal geometry (DNA, RNA) : Parkinson et al. (1996)
Validation Pipeline (wwPDB-VP) : 2.23.2

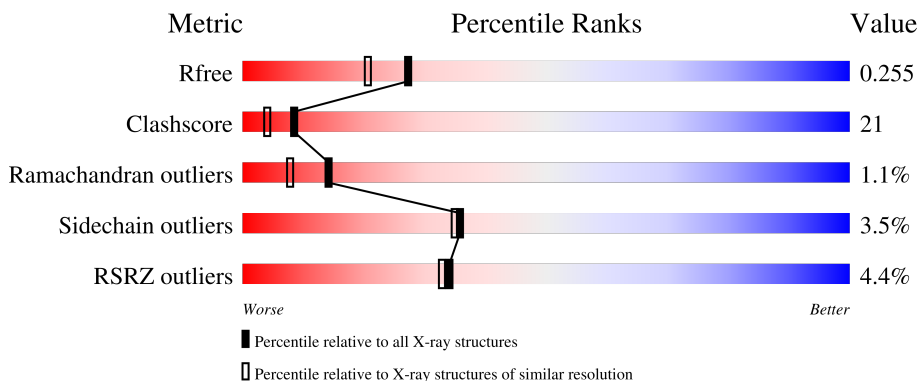
1 Overall quality at a glance

The following experimental techniques were used to determine the structure:

X-RAY DIFFRACTION

The reported resolution of this entry is 2.00 Å.

Percentile scores (ranging between 0-100) for global validation metrics of the entry are shown in the following graphic. The table shows the number of entries on which the scores are based.



Metric	Whole archive (#Entries)	Similar resolution (#Entries, resolution range(Å))
R_{free}	130704	8085 (2.00-2.00)
Clashscore	141614	9178 (2.00-2.00)
Ramachandran outliers	138981	9054 (2.00-2.00)
Sidechain outliers	138945	9053 (2.00-2.00)
RSRZ outliers	127900	7900 (2.00-2.00)

The table below summarises the geometric issues observed across the polymeric chains and their fit to the electron density. The red, orange, yellow and green segments of the lower bar indicate the fraction of residues that contain outliers for ≥ 3 , 2, 1 and 0 types of geometric quality criteria respectively. A grey segment represents the fraction of residues that are not modelled. The numeric value for each fraction is indicated below the corresponding segment, with a dot representing fractions $\leq 5\%$. The upper red bar (where present) indicates the fraction of residues that have poor fit to the electron density. The numeric value is given above the bar.

Mol	Chain	Length	Quality of chain
1	A	551	

The following table lists non-polymeric compounds, carbohydrate monomers and non-standard residues in protein, DNA, RNA chains that are outliers for geometric or electron-density-fit criteria:

Mol	Type	Chain	Res	Chirality	Geometry	Clashes	Electron density
2	FLC	A	1900	-	-	X	X

Continued on next page...

Continued from previous page...

Mol	Type	Chain	Res	Chirality	Geometry	Clashes	Electron density
4	IPA	A	1810	-	-	-	X
4	IPA	A	1811	-	-	X	-
5	GOL	A	2000	-	-	X	X

2 Entry composition [i](#)

There are 6 unique types of molecules in this entry. The entry contains 4819 atoms, of which 0 are hydrogens and 0 are deuteriums.

In the tables below, the ZeroOcc column contains the number of atoms modelled with zero occupancy, the AltConf column contains the number of residues with at least one atom in alternate conformation and the Trace column contains the number of residues modelled with at most 2 atoms.

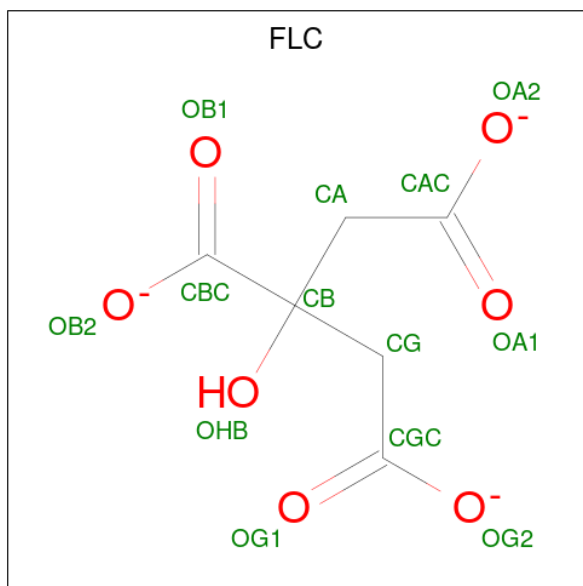
- Molecule 1 is a protein called XPD/Rad3 related DNA helicase.

Mol	Chain	Residues	Atoms					ZeroOcc	AltConf	Trace
			Total	C	N	O	S			
1	A	551	4505	2902	750	834	19	0	0	0

There is a discrepancy between the modelled and reference sequences:

Chain	Residue	Modelled	Actual	Comment	Reference
A	2	VAL	LEU	engineered mutation	UNP Q4JC68

- Molecule 2 is CITRATE ANION (three-letter code: FLC) (formula: $C_6H_5O_7$).



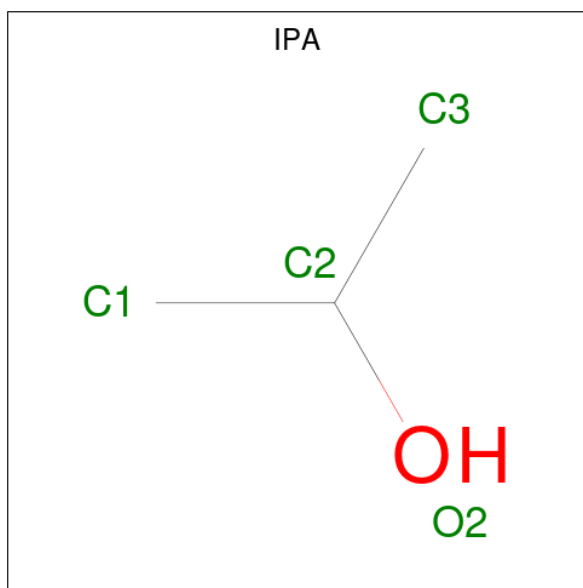
Mol	Chain	Residues	Atoms			ZeroOcc	AltConf
			Total	C	O		
2	A	1	13	6	7	0	0

- Molecule 3 is IRON/SULFUR CLUSTER (three-letter code: SF4) (formula: Fe_4S_4).



Mol	Chain	Residues	Atoms	ZeroOcc	AltConf
3	A	1	Total Fe S 8 4 4	0	0

- Molecule 4 is ISOPROPYL ALCOHOL (three-letter code: IPA) (formula: C₃H₈O).



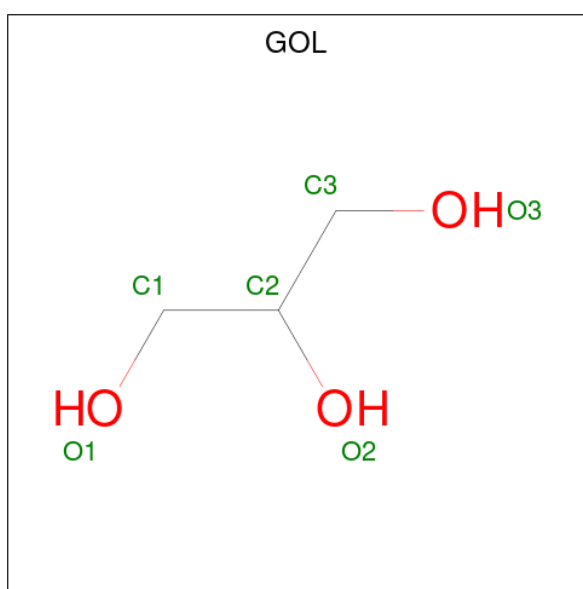
Mol	Chain	Residues	Atoms	ZeroOcc	AltConf
4	A	1	Total C O 4 3 1	0	0
4	A	1	Total C O 4 3 1	0	0
4	A	1	Total C O 4 3 1	0	0

Continued on next page...

Continued from previous page...

Mol	Chain	Residues	Atoms			ZeroOcc	AltConf
4	A	1	Total	C	O	0	0
			4	3	1		
4	A	1	Total	C	O	0	0
			4	3	1		
4	A	1	Total	C	O	0	0
			4	3	1		
4	A	1	Total	C	O	0	0
			4	3	1		

- Molecule 5 is GLYCEROL (three-letter code: GOL) (formula: C₃H₈O₃).



Mol	Chain	Residues	Atoms			ZeroOcc	AltConf
5	A	1	Total	C	O	0	0
			6	3	3		

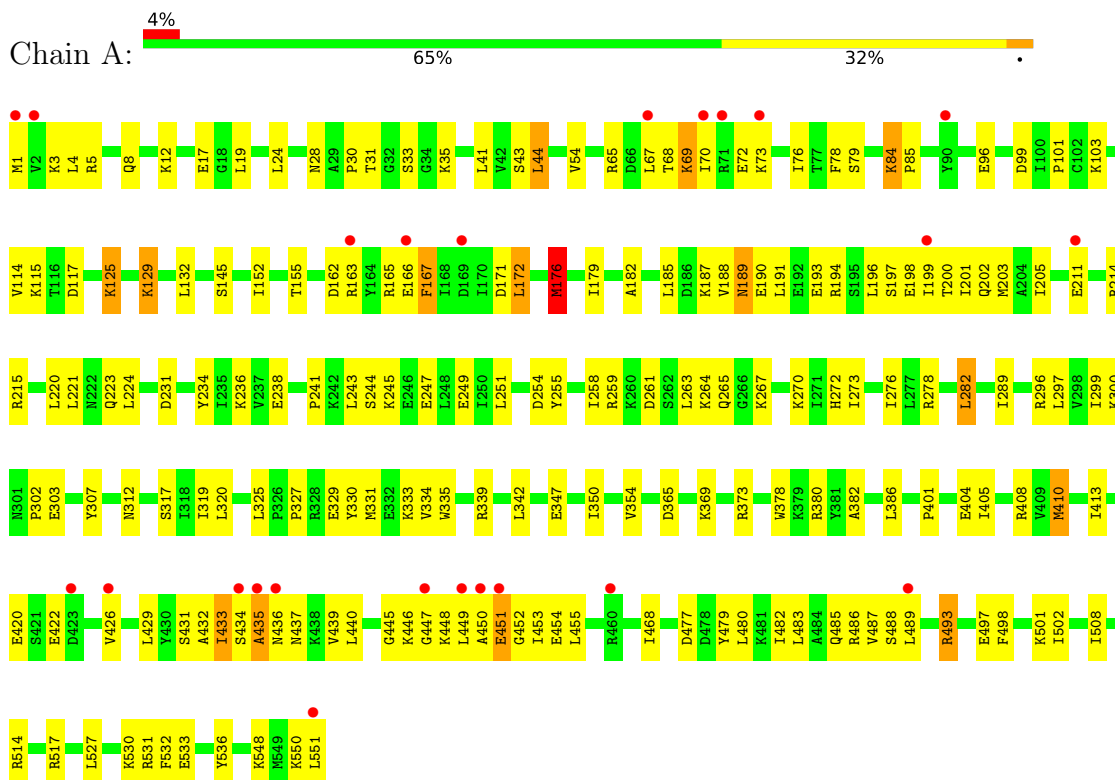
- Molecule 6 is water.

Mol	Chain	Residues	Atoms		ZeroOcc	AltConf
6	A	259	Total	O	0	0
			259	259		

3 Residue-property plots

These plots are drawn for all protein, RNA, DNA and oligosaccharide chains in the entry. The first graphic for a chain summarises the proportions of the various outlier classes displayed in the second graphic. The second graphic shows the sequence view annotated by issues in geometry and electron density. Residues are color-coded according to the number of geometric quality criteria for which they contain at least one outlier: green = 0, yellow = 1, orange = 2 and red = 3 or more. A red dot above a residue indicates a poor fit to the electron density ($RSRZ > 2$). Stretches of 2 or more consecutive residues without any outlier are shown as a green connector. Residues present in the sample, but not in the model, are shown in grey.

- Molecule 1: XPD/Rad3 related DNA helicase



4 Data and refinement statistics

Property	Value	Source
Space group	P 21 21 21	Depositor
Cell constants a, b, c, α , β , γ	53.54Å 70.22Å 144.29Å 90.00° 90.00° 90.00°	Depositor
Resolution (Å)	42.58 – 2.00 42.58 – 2.00	Depositor EDS
% Data completeness (in resolution range)	93.5 (42.58-2.00) 93.5 (42.58-2.00)	Depositor EDS
R_{merge}	(Not available)	Depositor
R_{sym}	(Not available)	Depositor
$\langle I/\sigma(I) \rangle$ ¹	2.14 (at 2.00Å)	Xtrriage
Refinement program	CNS 1.2	Depositor
R, R_{free}	0.222 , 0.260 0.214 , 0.255	Depositor DCC
R_{free} test set	3498 reflections (9.43%)	wwPDB-VP
Wilson B-factor (Å ²)	35.1	Xtrriage
Anisotropy	0.082	Xtrriage
Bulk solvent k_{sol} (e/Å ³), B_{sol} (Å ²)	0.34 , 57.3	EDS
L-test for twinning ²	$\langle L \rangle = 0.49$, $\langle L^2 \rangle = 0.32$	Xtrriage
Estimated twinning fraction	No twinning to report.	Xtrriage
F_o, F_c correlation	0.95	EDS
Total number of atoms	4819	wwPDB-VP
Average B, all atoms (Å ²)	42.0	wwPDB-VP

Xtrriage's analysis on translational NCS is as follows: *The largest off-origin peak in the Patterson function is 5.24% of the height of the origin peak. No significant pseudotranslation is detected.*

¹Intensities estimated from amplitudes.

²Theoretical values of $\langle |L| \rangle$, $\langle L^2 \rangle$ for acentric reflections are 0.5, 0.333 respectively for untwinned datasets, and 0.375, 0.2 for perfectly twinned datasets.

5 Model quality [i](#)

5.1 Standard geometry [i](#)

Bond lengths and bond angles in the following residue types are not validated in this section: FLC, GOL, IPA, SF4

The Z score for a bond length (or angle) is the number of standard deviations the observed value is removed from the expected value. A bond length (or angle) with $|Z| > 5$ is considered an outlier worth inspection. RMSZ is the root-mean-square of all Z scores of the bond lengths (or angles).

Mol	Chain	Bond lengths		Bond angles	
		RMSZ	# Z >5	RMSZ	# Z >5
1	A	0.33	0/4587	0.58	2/6179 (0.0%)

There are no bond length outliers.

All (2) bond angle outliers are listed below:

Mol	Chain	Res	Type	Atoms	Z	Observed(°)	Ideal(°)
1	A	84	LYS	C-N-CD	5.68	140.33	128.40
1	A	176	MET	N-CA-C	-5.01	97.47	111.00

There are no chirality outliers.

There are no planarity outliers.

5.2 Too-close contacts [i](#)

In the following table, the Non-H and H(model) columns list the number of non-hydrogen atoms and hydrogen atoms in the chain respectively. The H(added) column lists the number of hydrogen atoms added and optimized by MolProbity. The Clashes column lists the number of clashes within the asymmetric unit, whereas Symm-Clashes lists symmetry-related clashes.

Mol	Chain	Non-H	H(model)	H(added)	Clashes	Symm-Clashes
1	A	4505	0	4651	182	0
2	A	13	0	5	8	0
3	A	8	0	0	0	0
4	A	28	0	56	10	0
5	A	6	0	8	8	0
6	A	259	0	0	7	1
All	All	4819	0	4720	193	1

The all-atom clashscore is defined as the number of clashes found per 1000 atoms (including

hydrogen atoms). The all-atom clashscore for this structure is 21.

All (193) close contacts within the same asymmetric unit are listed below, sorted by their clash magnitude.

Atom-1	Atom-2	Interatomic distance (Å)	Clash overlap (Å)
1:A:198:GLU:HG3	1:A:221:LEU:HD11	1.35	1.06
2:A:1900:FLC:OA1	2:A:1900:FLC:HG2	1.63	0.96
4:A:1811:IPA:H11	5:A:2000:GOL:H31	1.51	0.93
1:A:373:ARG:HH22	5:A:2000:GOL:H32	1.34	0.91
1:A:531:ARG:HH12	4:A:1811:IPA:H31	1.36	0.90
1:A:451:GLU:H	1:A:514:ARG:HH21	1.21	0.87
1:A:196:LEU:HD21	1:A:201:ILE:HD11	1.57	0.87
1:A:531:ARG:HH12	4:A:1811:IPA:C3	1.88	0.87
1:A:41:LEU:HD13	1:A:70:ILE:HD11	1.58	0.84
1:A:303:GLU:HG3	1:A:486:ARG:HB3	1.63	0.81
1:A:487:VAL:HG12	1:A:489:LEU:HD13	1.61	0.80
1:A:451:GLU:N	1:A:514:ARG:HH21	1.79	0.80
1:A:422:GLU:HA	1:A:448:LYS:NZ	1.98	0.79
1:A:30:PRO:HG3	1:A:354:VAL:HG23	1.65	0.79
1:A:194:ARG:HG2	1:A:282:LEU:HD12	1.69	0.75
1:A:125:LYS:HE3	1:A:125:LYS:HA	1.70	0.74
1:A:245:LYS:O	1:A:249:GLU:HG3	1.88	0.74
1:A:189:ASN:HD22	1:A:190:GLU:N	1.87	0.73
1:A:531:ARG:NH1	4:A:1811:IPA:H31	2.04	0.73
1:A:69:LYS:O	1:A:69:LYS:HD3	1.89	0.72
1:A:162:ASP:HA	1:A:165:ARG:NH1	2.04	0.72
2:A:1900:FLC:OA1	2:A:1900:FLC:CG	2.30	0.71
1:A:189:ASN:HD22	1:A:190:GLU:H	1.38	0.71
1:A:1:MET:HG2	1:A:41:LEU:HD21	1.73	0.70
1:A:422:GLU:HA	1:A:448:LYS:HZ1	1.58	0.69
1:A:487:VAL:HG12	1:A:487:VAL:O	1.93	0.69
1:A:255:TYR:CZ	1:A:259:ARG:HD2	2.29	0.67
1:A:453:ILE:CD1	1:A:514:ARG:HH22	2.07	0.67
1:A:410:MET:CE	1:A:440:LEU:HD13	2.25	0.67
1:A:289:ILE:HD12	1:A:302:PRO:HG2	1.77	0.67
1:A:211:GLU:HA	1:A:214:ARG:HE	1.60	0.66
1:A:531:ARG:HH22	4:A:1811:IPA:H31	1.61	0.66
1:A:162:ASP:HA	1:A:165:ARG:HH12	1.60	0.65
1:A:188:VAL:HG13	1:A:191:LEU:HD12	1.78	0.65
1:A:455:LEU:HG	1:A:514:ARG:HH12	1.60	0.65
1:A:365:ASP:HB2	1:A:380:ARG:NH2	2.12	0.65
1:A:244:SER:OG	1:A:247:GLU:HG3	1.97	0.64
1:A:236:LYS:HE2	1:A:238:GLU:OE2	1.97	0.64

Continued on next page...

Continued from previous page...

Atom-1	Atom-2	Interatomic distance (Å)	Clash overlap (Å)
1:A:373:ARG:NH2	5:A:2000:GOL:H32	2.11	0.64
1:A:365:ASP:HB2	1:A:380:ARG:HH21	1.63	0.63
1:A:468:ILE:CD1	1:A:508:ILE:HG23	2.28	0.63
1:A:426:VAL:HG11	1:A:453:ILE:HG21	1.81	0.63
1:A:194:ARG:HB2	1:A:299:ILE:HD11	1.80	0.62
1:A:224:LEU:HD13	1:A:224:LEU:O	1.98	0.62
1:A:451:GLU:HA	1:A:514:ARG:HE	1.64	0.61
2:A:1900:FLC:OG1	2:A:1900:FLC:CBC	2.44	0.61
1:A:482:ILE:O	1:A:485:GLN:HG2	2.01	0.60
1:A:211:GLU:N	1:A:214:ARG:HH21	1.99	0.60
1:A:129:LYS:N	1:A:129:LYS:HE3	2.17	0.59
1:A:404:GLU:HG2	1:A:405:ILE:N	2.18	0.58
1:A:445:GLY:C	1:A:447:GLY:H	2.05	0.58
1:A:454:GLU:HG2	1:A:517:ARG:HH12	1.68	0.58
1:A:5:ARG:H	1:A:8:GLN:NE2	2.02	0.58
1:A:289:ILE:HD13	1:A:482:ILE:HD13	1.85	0.58
1:A:329:GLU:HB3	1:A:498:PHE:HZ	1.69	0.57
1:A:468:ILE:HD11	1:A:508:ILE:HG23	1.85	0.57
1:A:99:ASP:O	1:A:101:PRO:HD3	2.03	0.57
1:A:103:LYS:HG3	6:A:822:HOH:O	2.05	0.57
1:A:187:LYS:HA	1:A:187:LYS:HE2	1.86	0.57
1:A:303:GLU:HG3	1:A:486:ARG:CB	2.33	0.57
1:A:468:ILE:HD12	1:A:527:LEU:HD23	1.86	0.56
1:A:114:VAL:HG22	1:A:145:SER:HB3	1.86	0.56
1:A:373:ARG:HH22	5:A:2000:GOL:C3	2.10	0.56
1:A:166:GLU:HG3	1:A:167:PHE:N	2.21	0.56
1:A:198:GLU:HG3	1:A:221:LEU:CD1	2.25	0.56
1:A:19:LEU:HD11	1:A:319:ILE:HD11	1.88	0.56
1:A:347:GLU:CG	1:A:354:VAL:HG22	2.35	0.56
1:A:197:SER:HB3	1:A:296:ARG:HG2	1.88	0.56
1:A:451:GLU:CB	4:A:1812:IPA:H33	2.36	0.56
1:A:493:ARG:HE	1:A:493:ARG:HA	1.69	0.56
1:A:4:LEU:HD22	1:A:4:LEU:N	2.21	0.55
1:A:378:TRP:NE1	1:A:408:ARG:HD2	2.22	0.55
1:A:483:LEU:HD23	1:A:483:LEU:C	2.28	0.55
1:A:531:ARG:NH2	4:A:1811:IPA:H31	2.21	0.55
1:A:429:LEU:O	1:A:433:ILE:HG12	2.07	0.55
1:A:497:GLU:HA	1:A:501:LYS:HB2	1.89	0.55
1:A:488:SER:O	1:A:489:LEU:HD12	2.08	0.54
4:A:1811:IPA:H11	5:A:2000:GOL:C3	2.32	0.54
1:A:453:ILE:HD11	1:A:514:ARG:HH22	1.72	0.54

Continued on next page...

Continued from previous page...

Atom-1	Atom-2	Interatomic distance (Å)	Clash overlap (Å)
1:A:30:PRO:CG	1:A:354:VAL:HG23	2.37	0.53
1:A:382:ALA:O	1:A:386:LEU:HD13	2.07	0.53
1:A:445:GLY:O	1:A:447:GLY:N	2.41	0.53
5:A:2000:GOL:H12	6:A:680:HOH:O	2.07	0.53
1:A:194:ARG:CG	1:A:282:LEU:HD12	2.36	0.52
1:A:265:GLN:O	1:A:267:LYS:HG3	2.09	0.52
1:A:401:PRO:HB2	5:A:2000:GOL:H2	1.92	0.52
1:A:28:ASN:ND2	1:A:325:LEU:H	2.07	0.52
1:A:487:VAL:O	1:A:487:VAL:CG1	2.57	0.52
1:A:263:LEU:HD13	1:A:263:LEU:O	2.09	0.52
1:A:480:LEU:HD23	1:A:480:LEU:O	2.09	0.51
1:A:501:LYS:HD3	1:A:536:TYR:CZ	2.46	0.51
1:A:300:LYS:HD3	1:A:479:TYR:CE1	2.45	0.51
1:A:450:ALA:HB1	1:A:453:ILE:HG13	1.93	0.51
1:A:453:ILE:HD12	1:A:453:ILE:O	2.11	0.51
1:A:193:GLU:OE2	1:A:300:LYS:HE2	2.11	0.51
1:A:182:ALA:O	1:A:185:LEU:HG	2.11	0.51
1:A:251:LEU:HD22	1:A:273:ILE:HD11	1.92	0.51
1:A:31:THR:HA	1:A:35:LYS:HE2	1.92	0.50
1:A:73:LYS:HD2	1:A:73:LYS:N	2.26	0.50
1:A:211:GLU:HA	1:A:214:ARG:NE	2.26	0.50
1:A:501:LYS:HD3	1:A:536:TYR:CE2	2.46	0.50
1:A:451:GLU:HB2	4:A:1812:IPA:H33	1.93	0.50
1:A:115:LYS:HE2	1:A:117:ASP:HB3	1.93	0.50
1:A:224:LEU:HD13	1:A:224:LEU:C	2.32	0.50
1:A:550:LYS:O	1:A:551:LEU:HB2	2.12	0.49
2:A:1900:FLC:OA1	2:A:1900:FLC:CBC	2.53	0.49
2:A:1900:FLC:OA1	2:A:1900:FLC:OB2	2.29	0.49
1:A:410:MET:HE1	1:A:440:LEU:HD13	1.94	0.49
1:A:453:ILE:HD12	1:A:453:ILE:C	2.33	0.49
1:A:171:ASP:O	1:A:172:LEU:CB	2.60	0.49
2:A:1900:FLC:OG1	2:A:1900:FLC:OB1	2.30	0.49
1:A:369:LYS:HE2	2:A:1900:FLC:OB2	2.13	0.49
1:A:514:ARG:HG3	1:A:514:ARG:HH11	1.77	0.49
1:A:447:GLY:O	1:A:448:LYS:HB3	2.13	0.49
1:A:448:LYS:HG2	1:A:448:LYS:O	2.12	0.49
2:A:1900:FLC:OB2	2:A:1900:FLC:CAC	2.59	0.49
1:A:404:GLU:HG2	1:A:405:ILE:H	1.78	0.48
1:A:5:ARG:H	1:A:8:GLN:HE21	1.60	0.48
1:A:350:ILE:HD11	1:A:354:VAL:HG13	1.95	0.48
1:A:72:GLU:HG3	1:A:76:ILE:CD1	2.44	0.48

Continued on next page...

Continued from previous page...

Atom-1	Atom-2	Interatomic distance (Å)	Clash overlap (Å)
1:A:101:PRO:CG	1:A:263:LEU:HB2	2.44	0.48
1:A:426:VAL:HG13	1:A:453:ILE:HG12	1.95	0.48
1:A:468:ILE:HD13	1:A:508:ILE:HG23	1.96	0.47
1:A:450:ALA:C	1:A:452:GLY:H	2.16	0.47
1:A:533:GLU:OE1	1:A:548:LYS:HD2	2.14	0.47
1:A:96:GLU:OE1	1:A:270:LYS:HE2	2.14	0.47
1:A:12:LYS:HB3	1:A:12:LYS:NZ	2.30	0.47
1:A:72:GLU:HG3	1:A:76:ILE:HD11	1.97	0.47
1:A:435:ALA:N	6:A:800:HOH:O	2.48	0.47
1:A:163:ARG:HG3	6:A:806:HOH:O	2.14	0.47
1:A:317:SER:HA	6:A:637:HOH:O	2.14	0.46
1:A:450:ALA:HB1	1:A:453:ILE:CG1	2.45	0.46
1:A:189:ASN:ND2	1:A:190:GLU:N	2.59	0.46
1:A:482:ILE:HA	1:A:485:GLN:HG2	1.97	0.46
1:A:30:PRO:HG2	1:A:33:SER:HB3	1.97	0.46
1:A:436:ASN:O	1:A:437:ASN:HB2	2.16	0.46
1:A:24:LEU:C	1:A:24:LEU:HD23	2.36	0.46
1:A:205:ILE:HG23	1:A:214:ARG:HG2	1.97	0.46
1:A:531:ARG:CZ	4:A:1811:IPA:H31	2.44	0.46
1:A:188:VAL:HG11	1:A:307:TYR:HB3	1.97	0.45
1:A:223:GLN:HE21	1:A:241:PRO:HB3	1.81	0.45
1:A:312:ASN:HA	1:A:339:ARG:HD2	1.98	0.45
1:A:261:ASP:O	1:A:264:LYS:HB2	2.17	0.45
1:A:432:ALA:C	1:A:434:SER:H	2.20	0.45
1:A:67:LEU:O	1:A:70:ILE:HG22	2.17	0.45
1:A:101:PRO:HG3	1:A:263:LEU:HB2	1.98	0.45
1:A:165:ARG:HG2	6:A:662:HOH:O	2.17	0.44
1:A:437:ASN:O	1:A:439:VAL:HG23	2.17	0.44
1:A:455:LEU:HG	1:A:514:ARG:NH1	2.31	0.44
1:A:41:LEU:CD1	1:A:70:ILE:HD11	2.39	0.44
1:A:420:GLU:HB2	1:A:449:LEU:HD22	1.99	0.44
1:A:198:GLU:O	1:A:202:GLN:HG3	2.17	0.44
1:A:255:TYR:CE2	1:A:259:ARG:HD2	2.53	0.44
1:A:28:ASN:HD22	1:A:325:LEU:HB2	1.82	0.43
1:A:54:VAL:O	1:A:155:THR:HA	2.18	0.43
1:A:165:ARG:HB3	1:A:165:ARG:HH11	1.83	0.43
5:A:2000:GOL:C1	6:A:680:HOH:O	2.66	0.43
1:A:234:TYR:O	1:A:477:ASP:HB2	2.18	0.43
1:A:527:LEU:HB3	1:A:532:PHE:CD1	2.53	0.43
1:A:333:LYS:HD2	1:A:333:LYS:N	2.32	0.43
1:A:179:ILE:HD12	1:A:320:LEU:CD2	2.49	0.43

Continued on next page...

Continued from previous page...

Atom-1	Atom-2	Interatomic distance (Å)	Clash overlap (Å)
1:A:488:SER:C	1:A:489:LEU:HD12	2.39	0.43
1:A:429:LEU:C	1:A:429:LEU:HD13	2.39	0.43
1:A:445:GLY:C	1:A:447:GLY:N	2.71	0.43
1:A:433:ILE:HG22	1:A:439:VAL:HB	2.01	0.43
1:A:67:LEU:HD23	1:A:78:PHE:HB2	2.01	0.42
1:A:386:LEU:HD11	1:A:413:ILE:HG12	2.01	0.42
1:A:69:LYS:HE2	1:A:69:LYS:HB2	1.77	0.42
1:A:166:GLU:HG3	1:A:167:PHE:H	1.84	0.42
1:A:410:MET:HE2	1:A:440:LEU:HD13	2.01	0.42
1:A:79:SER:O	1:A:152:ILE:HA	2.20	0.42
1:A:179:ILE:HD12	1:A:320:LEU:HD21	2.02	0.42
1:A:273:ILE:HA	1:A:276:ILE:HD12	2.02	0.42
1:A:408:ARG:HG2	1:A:408:ARG:HH21	1.85	0.42
1:A:44:LEU:HD12	1:A:44:LEU:HA	1.86	0.42
1:A:211:GLU:OE1	1:A:215:ARG:NH2	2.53	0.41
1:A:254:ASP:O	1:A:258:ILE:HG13	2.20	0.41
1:A:289:ILE:HD12	1:A:302:PRO:CG	2.49	0.41
1:A:327:PRO:HD2	1:A:502:ILE:HD13	2.03	0.41
1:A:199:ILE:HG23	1:A:200:THR:N	2.35	0.41
1:A:431:SER:O	1:A:434:SER:N	2.53	0.41
1:A:330:TYR:CE1	1:A:334:VAL:HG21	2.56	0.41
1:A:114:VAL:HG22	1:A:145:SER:CB	2.50	0.41
1:A:331:MET:HG2	1:A:335:TRP:CE3	2.55	0.41
1:A:171:ASP:O	1:A:172:LEU:HB2	2.21	0.41
1:A:187:LYS:HD3	1:A:190:GLU:OE1	2.20	0.41
1:A:43:SER:HA	1:A:176:MET:HG3	2.03	0.41
1:A:194:ARG:CZ	1:A:278:ARG:HD2	2.51	0.41
1:A:203:MET:HB3	1:A:272:HIS:CD2	2.56	0.41
1:A:65:ARG:O	1:A:68:THR:HG22	2.21	0.41
1:A:1:MET:SD	1:A:12:LYS:HE3	2.61	0.40
1:A:84:LYS:O	1:A:85:PRO:C	2.54	0.40
1:A:194:ARG:HB2	1:A:299:ILE:CD1	2.47	0.40

All (1) symmetry-related close contacts are listed below. The label for Atom-2 includes the symmetry operator and encoded unit-cell translations to be applied.

Atom-1	Atom-2	Interatomic distance (Å)	Clash overlap (Å)
6:A:616:HOH:O	6:A:720:HOH:O[3_545]	2.10	0.10

5.3 Torsion angles [i](#)

5.3.1 Protein backbone [i](#)

In the following table, the Percentiles column shows the percent Ramachandran outliers of the chain as a percentile score with respect to all X-ray entries followed by that with respect to entries of similar resolution.

The Analysed column shows the number of residues for which the backbone conformation was analysed, and the total number of residues.

Mol	Chain	Analysed	Favoured	Allowed	Outliers	Percentiles
1	A	549/551 (100%)	518 (94%)	25 (5%)	6 (1%)	14 8

All (6) Ramachandran outliers are listed below:

Mol	Chain	Res	Type
1	A	446	LYS
1	A	3	LYS
1	A	172	LEU
1	A	433	ILE
1	A	435	ALA
1	A	451	GLU

5.3.2 Protein sidechains [i](#)

In the following table, the Percentiles column shows the percent sidechain outliers of the chain as a percentile score with respect to all X-ray entries followed by that with respect to entries of similar resolution.

The Analysed column shows the number of residues for which the sidechain conformation was analysed, and the total number of residues.

Mol	Chain	Analysed	Rotameric	Outliers	Percentiles
1	A	511/511 (100%)	493 (96%)	18 (4%)	36 35

All (18) residues with a non-rotameric sidechain are listed below:

Mol	Chain	Res	Type
1	A	17	GLU
1	A	44	LEU
1	A	69	LYS
1	A	125	LYS
1	A	129	LYS

Continued on next page...

Continued from previous page...

Mol	Chain	Res	Type
1	A	132	LEU
1	A	167	PHE
1	A	176	MET
1	A	189	ASN
1	A	220	LEU
1	A	231	ASP
1	A	243	LEU
1	A	282	LEU
1	A	297	LEU
1	A	342	LEU
1	A	410	MET
1	A	493	ARG
1	A	530	LYS

Sometimes sidechains can be flipped to improve hydrogen bonding and reduce clashes. All (9) such sidechains are listed below:

Mol	Chain	Res	Type
1	A	8	GLN
1	A	22	ASN
1	A	28	ASN
1	A	75	ASN
1	A	189	ASN
1	A	223	GLN
1	A	457	ASN
1	A	458	ASN
1	A	520	ASN

5.3.3 RNA [i](#)

There are no RNA molecules in this entry.

5.4 Non-standard residues in protein, DNA, RNA chains [i](#)

There are no non-standard protein/DNA/RNA residues in this entry.

5.5 Carbohydrates [i](#)

There are no monosaccharides in this entry.

5.6 Ligand geometry

10 ligands are modelled in this entry.

In the following table, the Counts columns list the number of bonds (or angles) for which Mogul statistics could be retrieved, the number of bonds (or angles) that are observed in the model and the number of bonds (or angles) that are defined in the Chemical Component Dictionary. The Link column lists molecule types, if any, to which the group is linked. The Z score for a bond length (or angle) is the number of standard deviations the observed value is removed from the expected value. A bond length (or angle) with $|Z| > 2$ is considered an outlier worth inspection. RMSZ is the root-mean-square of all Z scores of the bond lengths (or angles).

Mol	Type	Chain	Res	Link	Bond lengths			Bond angles		
					Counts	RMSZ	# Z > 2	Counts	RMSZ	# Z > 2
4	IPA	A	1811	-	3,3,3	0.52	0	3,3,3	0.34	0
3	SF4	A	600	1	0,12,12	-	-	-	-	-
4	IPA	A	1810	-	3,3,3	0.53	0	3,3,3	0.34	0
5	GOL	A	2000	-	5,5,5	0.31	0	5,5,5	0.21	0
4	IPA	A	1806	-	3,3,3	0.62	0	3,3,3	0.33	0
4	IPA	A	1807	-	3,3,3	0.60	0	3,3,3	0.33	0
2	FLC	A	1900	-	3,12,12	1.33	0	3,17,17	5.18	2 (66%)
4	IPA	A	1804	-	3,3,3	0.49	0	3,3,3	0.86	0
4	IPA	A	1812	-	3,3,3	0.53	0	3,3,3	0.34	0
4	IPA	A	1808	-	3,3,3	0.61	0	3,3,3	0.34	0

In the following table, the Chirals column lists the number of chiral outliers, the number of chiral centers analysed, the number of these observed in the model and the number defined in the Chemical Component Dictionary. Similar counts are reported in the Torsion and Rings columns. '-' means no outliers of that kind were identified.

Mol	Type	Chain	Res	Link	Chirals	Torsions	Rings
2	FLC	A	1900	-	-	1/6/16/16	-
3	SF4	A	600	1	-	-	0/6/5/5
5	GOL	A	2000	-	-	2/4/4/4	-

There are no bond length outliers.

All (2) bond angle outliers are listed below:

Mol	Chain	Res	Type	Atoms	Z	Observed(°)	Ideal(°)
2	A	1900	FLC	CB-CA-CAC	-8.31	101.67	114.98
2	A	1900	FLC	CB-CG-CGC	-3.34	109.64	114.98

There are no chirality outliers.

All (3) torsion outliers are listed below:

Mol	Chain	Res	Type	Atoms
5	A	2000	GOL	C1-C2-C3-O3
5	A	2000	GOL	O2-C2-C3-O3
2	A	1900	FLC	CAC-CA-CB-OHB

There are no ring outliers.

4 monomers are involved in 24 short contacts:

Mol	Chain	Res	Type	Clashes	Symm-Clashes
4	A	1811	IPA	8	0
5	A	2000	GOL	8	0
2	A	1900	FLC	8	0
4	A	1812	IPA	2	0

5.7 Other polymers [i](#)

There are no such residues in this entry.

5.8 Polymer linkage issues [i](#)

There are no chain breaks in this entry.

6 Fit of model and data

6.1 Protein, DNA and RNA chains

In the following table, the column labelled ‘#RSRZ> 2’ contains the number (and percentage) of RSRZ outliers, followed by percent RSRZ outliers for the chain as percentile scores relative to all X-ray entries and entries of similar resolution. The OWAB column contains the minimum, median, 95th percentile and maximum values of the occupancy-weighted average B-factor per residue. The column labelled ‘Q< 0.9’ lists the number of (and percentage) of residues with an average occupancy less than 0.9.

Mol	Chain	Analysed	<RSRZ>	#RSRZ>2	OWAB(Å ²)	Q<0.9
1	A	551/551 (100%)	0.27	24 (4%) 34 33	19, 40, 68, 84	0

All (24) RSRZ outliers are listed below:

Mol	Chain	Res	Type	RSRZ
1	A	1	MET	8.6
1	A	434	SER	4.0
1	A	423	ASP	3.9
1	A	426	VAL	3.9
1	A	73	LYS	3.8
1	A	436	ASN	3.7
1	A	449	LEU	3.5
1	A	450	ALA	3.1
1	A	447	GLY	2.9
1	A	551	LEU	2.9
1	A	70	ILE	2.9
1	A	451	GLU	2.7
1	A	460	ARG	2.6
1	A	163	ARG	2.5
1	A	169	ASP	2.5
1	A	435	ALA	2.3
1	A	67	LEU	2.3
1	A	199	ILE	2.3
1	A	71	ARG	2.3
1	A	90	TYR	2.2
1	A	489	LEU	2.2
1	A	211	GLU	2.2
1	A	2	VAL	2.1
1	A	166	GLU	2.0

6.2 Non-standard residues in protein, DNA, RNA chains [i](#)

There are no non-standard protein/DNA/RNA residues in this entry.

6.3 Carbohydrates [i](#)

There are no monosaccharides in this entry.

6.4 Ligands [i](#)

In the following table, the Atoms column lists the number of modelled atoms in the group and the number defined in the chemical component dictionary. The B-factors column lists the minimum, median, 95th percentile and maximum values of B factors of atoms in the group. The column labelled 'Q< 0.9' lists the number of atoms with occupancy less than 0.9.

Mol	Type	Chain	Res	Atoms	RSCC	RSR	B-factors(\AA^2)	Q<0.9
4	IPA	A	1810	4/4	0.26	0.51	66,67,67,67	0
4	IPA	A	1806	4/4	0.43	0.27	77,78,78,78	0
2	FLC	A	1900	13/13	0.65	0.43	53,61,63,64	0
4	IPA	A	1811	4/4	0.70	0.28	55,56,57,58	0
5	GOL	A	2000	6/6	0.76	0.44	66,67,67,67	0
4	IPA	A	1807	4/4	0.78	0.17	66,67,68,68	0
4	IPA	A	1812	4/4	0.80	0.30	69,70,70,70	0
4	IPA	A	1808	4/4	0.80	0.20	76,76,76,76	0
4	IPA	A	1804	4/4	0.83	0.34	67,68,69,69	0
3	SF4	A	600	8/8	0.99	0.06	36,38,39,40	0

6.5 Other polymers [i](#)

There are no such residues in this entry.