



Full wwPDB X-ray Structure Validation Report ⓘ

Nov 20, 2023 – 04:26 PM JST

PDB ID : 7CRV
Title : Crystal structure of rNLRP1-FIIND
Authors : Huang, M.H.; Zhang, X.X.; Wang, J.; Chai, J.J.
Deposited on : 2020-08-14
Resolution : 2.00 Å(reported)

This is a Full wwPDB X-ray Structure Validation Report for a publicly released PDB entry.

We welcome your comments at validation@mail.wwpdb.org

A user guide is available at

<https://www.wwpdb.org/validation/2017/XrayValidationReportHelp>

with specific help available everywhere you see the ⓘ symbol.

The types of validation reports are described at

<http://www.wwpdb.org/validation/2017/FAQs#types>.

The following versions of software and data (see [references ⓘ](#)) were used in the production of this report:

MolProbity : 4.02b-467
Xtriage (Phenix) : 1.13
EDS : 2.36
Percentile statistics : 20191225.v01 (using entries in the PDB archive December 25th 2019)
Refmac : 5.8.0158
CCP4 : 7.0.044 (Gargrove)
Ideal geometry (proteins) : Engh & Huber (2001)
Ideal geometry (DNA, RNA) : Parkinson et al. (1996)
Validation Pipeline (wwPDB-VP) : 2.36

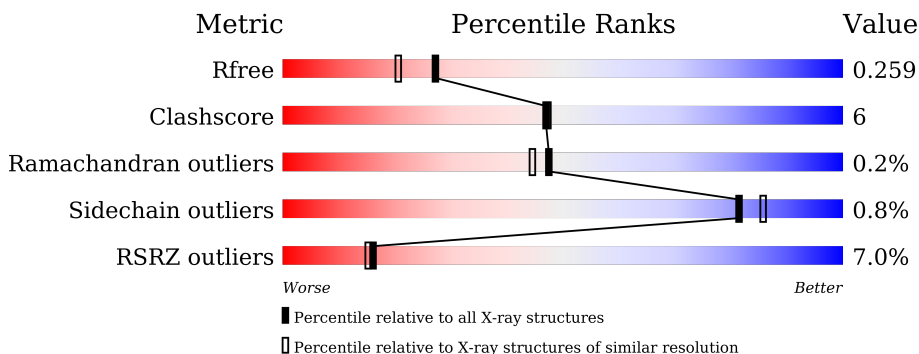
1 Overall quality at a glance

The following experimental techniques were used to determine the structure:

X-RAY DIFFRACTION

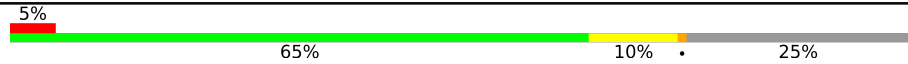

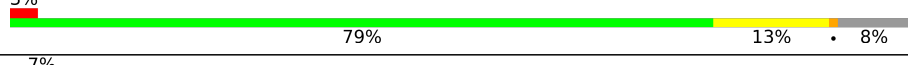

The reported resolution of this entry is 2.00 Å.

Percentile scores (ranging between 0-100) for global validation metrics of the entry are shown in the following graphic. The table shows the number of entries on which the scores are based.



Metric	Whole archive (#Entries)	Similar resolution (#Entries, resolution range(Å))
R_{free}	130704	8085 (2.00-2.00)
Clashscore	141614	9178 (2.00-2.00)
Ramachandran outliers	138981	9054 (2.00-2.00)
Sidechain outliers	138945	9053 (2.00-2.00)
RSRZ outliers	127900	7900 (2.00-2.00)

The table below summarises the geometric issues observed across the polymeric chains and their fit to the electron density. The red, orange, yellow and green segments of the lower bar indicate the fraction of residues that contain outliers for ≥ 3 , 2, 1 and 0 types of geometric quality criteria respectively. A grey segment represents the fraction of residues that are not modelled. The numeric value for each fraction is indicated below the corresponding segment, with a dot representing fractions $\leq 5\%$. The upper red bar (where present) indicates the fraction of residues that have poor fit to the electron density. The numeric value is given above the bar.

Mol	Chain	Length	Quality of chain
1	A	186	 5% 65% 10% • 25%
1	C	186	 8% 67% 8% •• 23%
2	B	154	 3% 79% 13% • 8%
2	D	154	 7% 80% 13% •• 5%

2 Entry composition

There are 2 unique types of molecules in this entry. The entry contains 4542 atoms, of which 0 are hydrogens and 0 are deuteriums.

In the tables below, the ZeroOcc column contains the number of atoms modelled with zero occupancy, the AltConf column contains the number of residues with at least one atom in alternate conformation and the Trace column contains the number of residues modelled with at most 2 atoms.

- Molecule 1 is a protein called NLR family protein 1.

Mol	Chain	Residues	Atoms					ZeroOcc	AltConf	Trace
			Total	C	N	O	S			
1	A	140	1092	698	190	198	6	0	0	0
1	C	143	1119	716	193	203	7	0	0	0

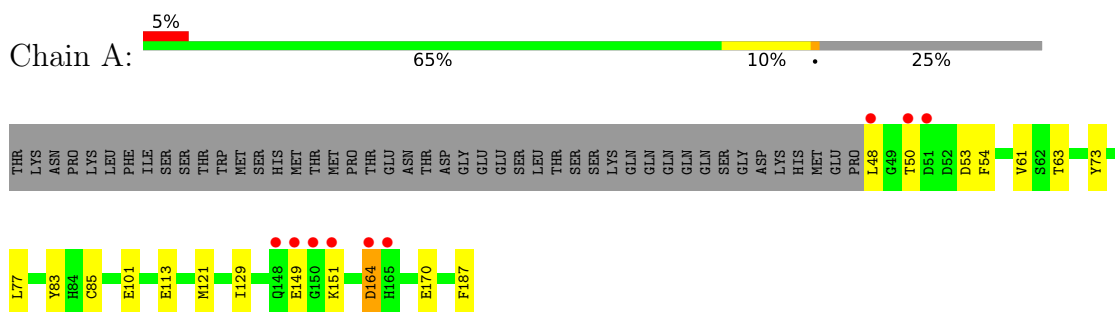
- Molecule 2 is a protein called NLR family protein 1.

Mol	Chain	Residues	Atoms					ZeroOcc	AltConf	Trace
			Total	C	N	O	S			
2	D	146	1182	774	191	212	5	0	0	0
2	B	142	1149	752	184	208	5	0	0	0

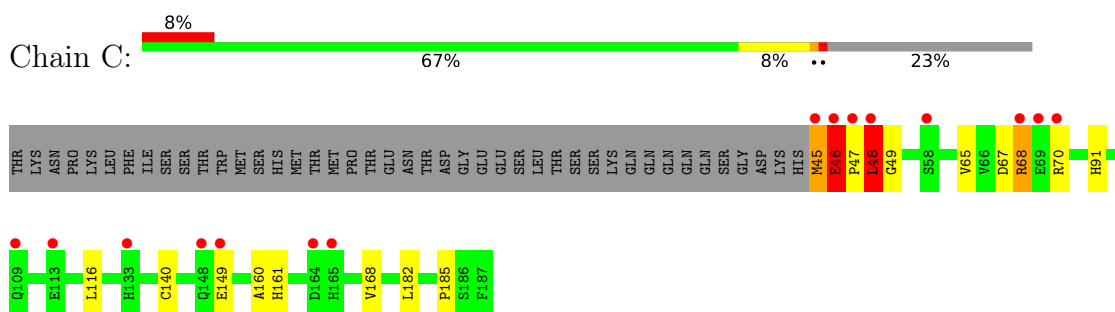
3 Residue-property plots [i](#)

These plots are drawn for all protein, RNA, DNA and oligosaccharide chains in the entry. The first graphic for a chain summarises the proportions of the various outlier classes displayed in the second graphic. The second graphic shows the sequence view annotated by issues in geometry and electron density. Residues are color-coded according to the number of geometric quality criteria for which they contain at least one outlier: green = 0, yellow = 1, orange = 2 and red = 3 or more. A red dot above a residue indicates a poor fit to the electron density ($RSRZ > 2$). Stretches of 2 or more consecutive residues without any outlier are shown as a green connector. Residues present in the sample, but not in the model, are shown in grey.

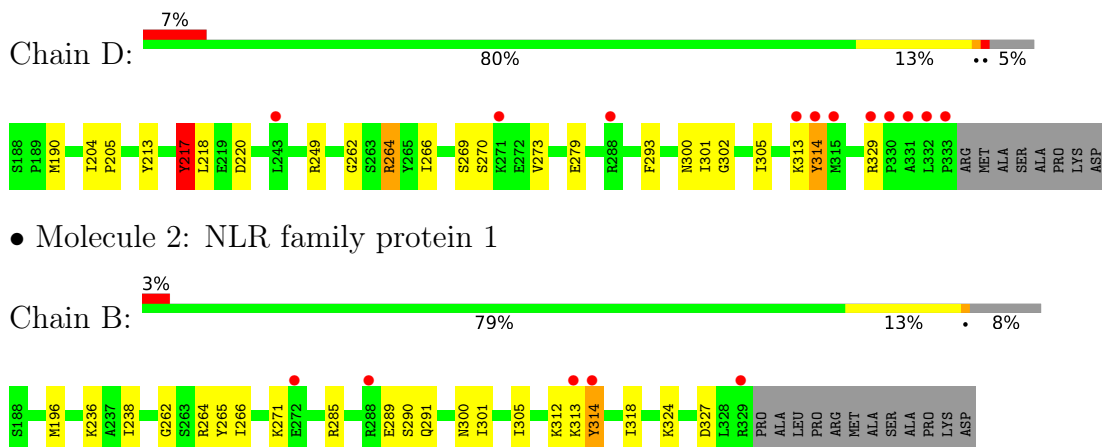
- Molecule 1: NLR family protein 1



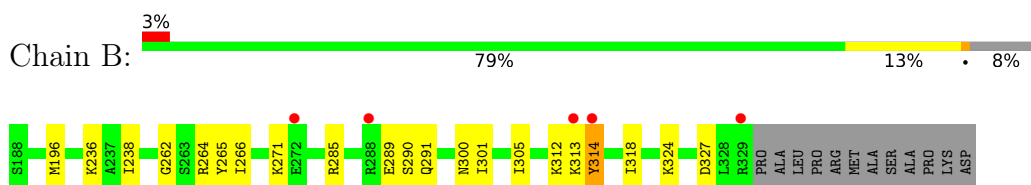
- Molecule 1: NLR family protein 1



- Molecule 2: NLR family protein 1



- Molecule 2: NLR family protein 1



4 Data and refinement statistics i

Property	Value	Source
Space group	P 31 2 1	Depositor
Cell constants a, b, c, α , β , γ	83.95Å 83.95Å 156.54Å 90.00° 90.00° 120.00°	Depositor
Resolution (Å)	28.76 – 2.00 28.76 – 2.00	Depositor EDS
% Data completeness (in resolution range)	99.9 (28.76-2.00) 99.9 (28.76-2.00)	Depositor EDS
R_{merge}	(Not available)	Depositor
R_{sym}	(Not available)	Depositor
$\langle I/\sigma(I) \rangle$ ¹	3.81 (at 2.00Å)	Xtrriage
Refinement program	PHENIX 1.18.2-3874	Depositor
R, R_{free}	0.225 , 0.259 0.225 , 0.259	Depositor DCC
R_{free} test set	2194 reflections (5.01%)	wwPDB-VP
Wilson B-factor (Å ²)	31.9	Xtrriage
Anisotropy	0.193	Xtrriage
Bulk solvent k_{sol} (e/Å ³), B_{sol} (Å ²)	0.38 , 40.3	EDS
L-test for twinning ²	$\langle L \rangle = 0.49$, $\langle L^2 \rangle = 0.32$	Xtrriage
Estimated twinning fraction	0.029 for -h,-k,l	Xtrriage
F_o, F_c correlation	0.94	EDS
Total number of atoms	4542	wwPDB-VP
Average B, all atoms (Å ²)	37.0	wwPDB-VP

Xtrriage's analysis on translational NCS is as follows: *The largest off-origin peak in the Patterson function is 6.71% of the height of the origin peak. No significant pseudotranslation is detected.*

¹Intensities estimated from amplitudes.

²Theoretical values of $\langle |L| \rangle$, $\langle L^2 \rangle$ for acentric reflections are 0.5, 0.333 respectively for untwinned datasets, and 0.375, 0.2 for perfectly twinned datasets.

5 Model quality i

5.1 Standard geometry i

The Z score for a bond length (or angle) is the number of standard deviations the observed value is removed from the expected value. A bond length (or angle) with $|Z| > 5$ is considered an outlier worth inspection. RMSZ is the root-mean-square of all Z scores of the bond lengths (or angles).

Mol	Chain	Bond lengths		Bond angles	
		RMSZ	# Z >5	RMSZ	# Z >5
1	A	0.52	1/1128 (0.1%)	0.71	2/1540 (0.1%)
1	C	0.70	3/1156 (0.3%)	0.89	6/1578 (0.4%)
2	B	0.51	0/1176	0.72	0/1597
2	D	0.55	0/1211	0.77	2/1646 (0.1%)
All	All	0.57	4/4671 (0.1%)	0.77	10/6361 (0.2%)

Chiral center outliers are detected by calculating the chiral volume of a chiral center and verifying if the center is modelled as a planar moiety or with the opposite hand. A planarity outlier is detected by checking planarity of atoms in a peptide group, atoms in a mainchain group or atoms of a sidechain that are expected to be planar.

Mol	Chain	#Chirality outliers	#Planarity outliers
1	C	0	1

All (4) bond length outliers are listed below:

Mol	Chain	Res	Type	Atoms	Z	Observed(Å)	Ideal(Å)
1	C	46	GLU	CD-OE1	9.17	1.35	1.25
1	C	68	ARG	CZ-NH1	8.95	1.44	1.33
1	C	46	GLU	CD-OE2	8.01	1.34	1.25
1	A	170	GLU	CB-CG	5.75	1.63	1.52

All (10) bond angle outliers are listed below:

Mol	Chain	Res	Type	Atoms	Z	Observed($^{\circ}$)	Ideal($^{\circ}$)
1	C	48	LEU	CB-CG-CD2	16.88	139.69	111.00
2	D	264	ARG	NE-CZ-NH1	-7.80	116.40	120.30
1	C	46	GLU	CG-CD-OE1	-7.20	103.90	118.30
1	C	46	GLU	N-CA-C	-7.18	91.61	111.00
1	C	48	LEU	CA-CB-CG	6.52	130.29	115.30
1	A	101	GLU	CA-CB-CG	6.04	126.69	113.40
1	C	45	MET	C-N-CA	-6.01	106.68	121.70
1	A	164	ASP	CB-CG-OD1	-5.68	113.19	118.30

Continued on next page...

Continued from previous page...

Mol	Chain	Res	Type	Atoms	Z	Observed(°)	Ideal(°)
2	D	217	TYR	CA-CB-CG	5.40	123.66	113.40
1	C	46	GLU	CB-CA-C	-5.10	100.20	110.40

There are no chirality outliers.

All (1) planarity outliers are listed below:

Mol	Chain	Res	Type	Group
1	C	46	GLU	Sidechain

5.2 Too-close contacts [i](#)

In the following table, the Non-H and H(model) columns list the number of non-hydrogen atoms and hydrogen atoms in the chain respectively. The H(added) column lists the number of hydrogen atoms added and optimized by MolProbity. The Clashes column lists the number of clashes within the asymmetric unit, whereas Symm-Clashes lists symmetry-related clashes.

Mol	Chain	Non-H	H(model)	H(added)	Clashes	Symm-Clashes
1	A	1092	0	1032	11	0
1	C	1119	0	1063	17	0
2	B	1149	0	1178	18	0
2	D	1182	0	1219	16	0
All	All	4542	0	4492	56	0

The all-atom clashscore is defined as the number of clashes found per 1000 atoms (including hydrogen atoms). The all-atom clashscore for this structure is 6.

All (56) close contacts within the same asymmetric unit are listed below, sorted by their clash magnitude.

Atom-1	Atom-2	Interatomic distance (Å)	Clash overlap (Å)
1:C:65:VAL:HG11	1:C:68:ARG:HG2	1.23	1.13
2:D:313:LYS:HD2	2:D:314:TYR:CE2	1.93	1.04
2:B:285:ARG:NH1	2:B:290:SER:O	2.16	0.78
1:C:46:GLU:HG2	1:C:47:PRO:O	1.89	0.72
2:D:269:SER:HB3	2:D:273:VAL:HG21	1.71	0.72
1:C:116:LEU:H	1:C:116:LEU:HD23	1.56	0.70
1:C:67:ASP:OD2	1:C:70:ARG:NH1	2.26	0.68
2:D:264:ARG:NH1	2:B:262:GLY:O	2.28	0.67
1:C:65:VAL:HG11	1:C:68:ARG:CG	2.15	0.66
1:C:91:HIS:HB2	1:C:140:CYS:HB2	1.79	0.65

Continued on next page...

Continued from previous page...

Atom-1	Atom-2	Interatomic distance (Å)	Clash overlap (Å)
1:C:65:VAL:CG1	1:C:68:ARG:HG2	2.16	0.64
1:A:48:LEU:N	1:A:63:THR:O	2.31	0.63
2:B:313:LYS:HB2	2:B:314:TYR:CD1	2.34	0.63
2:D:301:ILE:HD12	2:D:305:ILE:HG12	1.84	0.60
2:B:266:ILE:HD11	2:B:312:LYS:HG3	1.84	0.59
1:A:50:THR:HA	1:A:53:ASP:OD1	2.02	0.58
1:C:46:GLU:HG2	1:C:47:PRO:N	2.17	0.58
1:A:121:MET:SD	2:B:196:MET:HG3	2.43	0.58
1:C:149:GLU:N	1:C:149:GLU:OE2	2.36	0.57
2:B:265:TYR:CE1	2:B:318:ILE:HD13	2.40	0.57
2:B:314:TYR:CD1	2:B:314:TYR:N	2.74	0.55
1:C:46:GLU:CG	1:C:47:PRO:N	2.70	0.55
1:A:113:GLU:HB3	2:D:293:PHE:HE2	1.73	0.54
1:C:48:LEU:C	1:C:48:LEU:HD12	2.29	0.53
2:D:313:LYS:HD2	2:D:314:TYR:HE2	1.64	0.53
1:C:161:HIS:HB3	1:C:168:VAL:HG13	1.91	0.53
1:C:45:MET:SD	1:C:45:MET:N	2.82	0.52
2:B:285:ARG:HH11	2:B:289:GLU:HG3	1.75	0.51
2:B:324:LYS:HG2	2:B:327:ASP:OD1	2.11	0.51
1:A:54:PHE:HB2	1:A:61:VAL:HG13	1.92	0.51
1:A:77:LEU:HD22	1:A:83:TYR:CD2	2.46	0.51
2:D:266:ILE:HD13	2:D:279:GLU:HG2	1.92	0.50
2:D:213:TYR:CE2	2:D:249:ARG:HB2	2.48	0.48
1:C:182:LEU:HD23	1:C:185:PRO:HB3	1.95	0.47
2:B:313:LYS:HB2	2:B:314:TYR:HD1	1.79	0.47
1:A:54:PHE:CE2	1:A:85:CYS:HB2	2.50	0.47
2:D:329:ARG:HD3	2:D:329:ARG:HA	1.49	0.46
2:B:314:TYR:N	2:B:314:TYR:HD1	2.12	0.46
1:A:129:ILE:O	1:A:187:PHE:HB3	2.16	0.46
1:C:48:LEU:HD12	1:C:49:GLY:N	2.31	0.45
2:B:271:LYS:NZ	2:B:300:ASN:O	2.50	0.45
1:C:161:HIS:HB3	1:C:168:VAL:CG1	2.46	0.45
2:D:300:ASN:OD1	2:D:302:GLY:N	2.50	0.44
1:A:73:TYR:OH	2:B:236:LYS:HE3	2.18	0.44
2:B:238:ILE:HD11	2:B:291:GLN:HG3	1.99	0.44
2:D:217:TYR:O	2:D:218:LEU:HB2	2.19	0.43
2:B:301:ILE:HD11	2:B:305:ILE:HG22	2.00	0.43
2:D:217:TYR:O	2:D:220:ASP:OD1	2.38	0.42
1:A:149:GLU:HG2	1:A:151:LYS:HG2	2.01	0.42
1:A:77:LEU:HD22	1:A:83:TYR:CG	2.55	0.42
2:D:269:SER:OG	2:D:270:SER:N	2.52	0.41

Continued on next page...

Continued from previous page...

Atom-1	Atom-2	Interatomic distance (Å)	Clash overlap (Å)
2:B:313:LYS:CB	2:B:314:TYR:CD1	3.02	0.41
2:D:190:MET:HA	1:C:160:ALA:O	2.21	0.40
2:D:262:GLY:O	2:B:264:ARG:NH2	2.47	0.40
2:B:285:ARG:CZ	2:B:290:SER:O	2.70	0.40
2:D:204:ILE:HB	2:D:205:PRO:HD2	2.04	0.40

There are no symmetry-related clashes.

5.3 Torsion angles [i](#)

5.3.1 Protein backbone [i](#)

In the following table, the Percentiles column shows the percent Ramachandran outliers of the chain as a percentile score with respect to all X-ray entries followed by that with respect to entries of similar resolution.

The Analysed column shows the number of residues for which the backbone conformation was analysed, and the total number of residues.

Mol	Chain	Analysed	Favoured	Allowed	Outliers	Percentiles	
1	A	138/186 (74%)	135 (98%)	2 (1%)	1 (1%)	22	16
1	C	141/186 (76%)	139 (99%)	2 (1%)	0	100	100
2	B	140/154 (91%)	136 (97%)	4 (3%)	0	100	100
2	D	144/154 (94%)	141 (98%)	3 (2%)	0	100	100
All	All	563/680 (83%)	551 (98%)	11 (2%)	1 (0%)	47	44

All (1) Ramachandran outliers are listed below:

Mol	Chain	Res	Type
1	A	164	ASP

5.3.2 Protein sidechains [i](#)

In the following table, the Percentiles column shows the percent sidechain outliers of the chain as a percentile score with respect to all X-ray entries followed by that with respect to entries of similar resolution.

The Analysed column shows the number of residues for which the sidechain conformation was analysed, and the total number of residues.

Mol	Chain	Analysed	Rotameric	Outliers	Percentiles	
1	A	119/164 (73%)	119 (100%)	0	100	100
1	C	123/164 (75%)	122 (99%)	1 (1%)	81	86
2	B	130/140 (93%)	129 (99%)	1 (1%)	81	86
2	D	134/140 (96%)	132 (98%)	2 (2%)	65	69
All	All	506/608 (83%)	502 (99%)	4 (1%)	81	86

All (4) residues with a non-rotameric sidechain are listed below:

Mol	Chain	Res	Type
2	D	217	TYR
2	D	314	TYR
1	C	48	LEU
2	B	314	TYR

Sometimes sidechains can be flipped to improve hydrogen bonding and reduce clashes. All (3) such sidechains are listed below:

Mol	Chain	Res	Type
1	A	84	HIS
1	A	163	GLN
2	D	306	ASN

5.3.3 RNA [i](#)

There are no RNA molecules in this entry.

5.4 Non-standard residues in protein, DNA, RNA chains [i](#)

There are no non-standard protein/DNA/RNA residues in this entry.

5.5 Carbohydrates [i](#)

There are no monosaccharides in this entry.

5.6 Ligand geometry [i](#)

There are no ligands in this entry.

5.7 Other polymers [i](#)

There are no such residues in this entry.

5.8 Polymer linkage issues [i](#)

There are no chain breaks in this entry.

6 Fit of model and data

6.1 Protein, DNA and RNA chains

In the following table, the column labelled ‘#RSRZ > 2’ contains the number (and percentage) of RSRZ outliers, followed by percent RSRZ outliers for the chain as percentile scores relative to all X-ray entries and entries of similar resolution. The OWAB column contains the minimum, median, 95th percentile and maximum values of the occupancy-weighted average B-factor per residue. The column labelled ‘Q < 0.9’ lists the number of (and percentage) of residues with an average occupancy less than 0.9.

Mol	Chain	Analysed	<RSRZ>	#RSRZ>2	OWAB(Å ²)	Q<0.9
1	A	140/186 (75%)	0.53	9 (6%) 19 18	20, 35, 66, 76	0
1	C	143/186 (76%)	0.63	15 (10%) 6 5	24, 42, 62, 83	0
2	B	142/154 (92%)	0.22	5 (3%) 44 43	18, 32, 49, 76	0
2	D	146/154 (94%)	0.36	11 (7%) 14 13	20, 33, 56, 85	0
All	All	571/680 (83%)	0.43	40 (7%) 16 15	18, 35, 60, 85	0

All (40) RSRZ outliers are listed below:

Mol	Chain	Res	Type	RSRZ
2	D	333	PRO	10.0
1	C	45	MET	8.0
2	D	332	LEU	7.6
1	C	46	GLU	7.4
1	C	47	PRO	5.4
2	B	272	GLU	5.2
1	C	48	LEU	5.1
2	D	331	ALA	4.5
1	C	109	GLN	4.3
1	A	149	GLU	4.2
2	B	314	TYR	4.2
1	A	148	GLN	4.2
1	A	48	LEU	4.1
2	D	330	PRO	3.8
2	D	314	TYR	3.7
2	D	329	ARG	3.7
1	A	51	ASP	3.6
1	C	164	ASP	3.6
1	A	165	HIS	3.4
1	C	165	HIS	3.3
1	A	151	LYS	3.2

Continued on next page...

Continued from previous page...

Mol	Chain	Res	Type	RSRZ
2	B	288	ARG	3.2
1	C	68	ARG	3.0
1	A	150	GLY	2.9
1	A	164	ASP	2.9
2	D	288	ARG	2.8
1	C	149	GLU	2.8
1	A	50	THR	2.7
2	B	329	ARG	2.6
2	D	243	LEU	2.5
2	D	271	LYS	2.5
2	B	313	LYS	2.5
1	C	70	ARG	2.5
1	C	133	HIS	2.3
1	C	58	SER	2.3
2	D	315	MET	2.3
1	C	148	GLN	2.2
2	D	313	LYS	2.2
1	C	69	GLU	2.0
1	C	113	GLU	2.0

6.2 Non-standard residues in protein, DNA, RNA chains [i](#)

There are no non-standard protein/DNA/RNA residues in this entry.

6.3 Carbohydrates [i](#)

There are no monosaccharides in this entry.

6.4 Ligands [i](#)

There are no ligands in this entry.

6.5 Other polymers [i](#)

There are no such residues in this entry.