



# Full wwPDB X-ray Structure Validation Report ⓘ

Sep 18, 2023 – 07:08 PM EDT

PDB ID : 5CTW  
Title : Crystal structure of the ATP binding domain of *S. aureus* GyrB complexed with a fragment  
Authors : Andersen, O.A.; Barker, J.; Hadfield, A.T.; Cheng, R.K.; Kahmann, J.; Felicetti, B.; Wood, M.; Scheich, C.; Mesleh, M.; Cross, J.B.; Zhang, J.; Yang, Q.; Lippa, B.; Ryan, M.D.  
Deposited on : 2015-07-24  
Resolution : 1.48 Å(reported)

This is a Full wwPDB X-ray Structure Validation Report for a publicly released PDB entry.

We welcome your comments at [validation@mail.wwpdb.org](mailto:validation@mail.wwpdb.org)

A user guide is available at

<https://www.wwpdb.org/validation/2017/XrayValidationReportHelp>

with specific help available everywhere you see the ⓘ symbol.

The types of validation reports are described at

<http://www.wwpdb.org/validation/2017/FAQs#types>.

---

The following versions of software and data (see [references ⓘ](#)) were used in the production of this report:

MolProbity : 4.02b-467  
Mogul : 1.8.5 (274361), CSD as541be (2020)  
Xtrriage (Phenix) : 1.13  
EDS : 2.35.1  
Percentile statistics : 20191225.v01 (using entries in the PDB archive December 25th 2019)  
Refmac : 5.8.0158  
CCP4 : 7.0.044 (Gargrove)  
Ideal geometry (proteins) : Engh & Huber (2001)  
Ideal geometry (DNA, RNA) : Parkinson et al. (1996)  
Validation Pipeline (wwPDB-VP) : 2.35.1

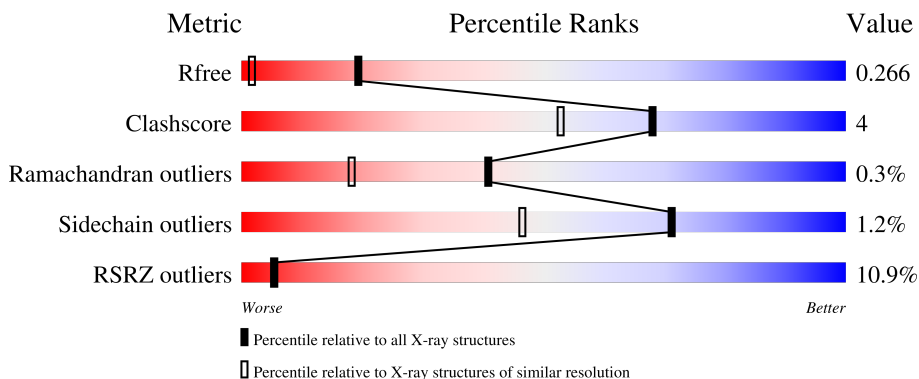
# 1 Overall quality at a glance

The following experimental techniques were used to determine the structure:

*X-RAY DIFFRACTION*

The reported resolution of this entry is 1.48 Å.

Percentile scores (ranging between 0-100) for global validation metrics of the entry are shown in the following graphic. The table shows the number of entries on which the scores are based.



Metric	Whole archive (#Entries)	Similar resolution (#Entries, resolution range(Å))
$R_{free}$	130704	4690 (1.50-1.46)
Clashscore	141614	4955 (1.50-1.46)
Ramachandran outliers	138981	4846 (1.50-1.46)
Sidechain outliers	138945	4844 (1.50-1.46)
RSRZ outliers	127900	4614 (1.50-1.46)

The table below summarises the geometric issues observed across the polymeric chains and their fit to the electron density. The red, orange, yellow and green segments of the lower bar indicate the fraction of residues that contain outliers for  $\geq 3$ , 2, 1 and 0 types of geometric quality criteria respectively. A grey segment represents the fraction of residues that are not modelled. The numeric value for each fraction is indicated below the corresponding segment, with a dot representing fractions  $\leq 5\%$ . The upper red bar (where present) indicates the fraction of residues that have poor fit to the electron density. The numeric value is given above the bar.

Mol	Chain	Length	Quality of chain
1	A	212	 9% (Poor fit), 77% (0-1 outliers), 12% (2 outliers), 9% (3+ outliers or not modelled)
1	B	212	 10% (Poor fit), 82% (0-1 outliers), 8% (2 outliers), 9% (3+ outliers or not modelled)

## 2 Entry composition [i](#)

There are 6 unique types of molecules in this entry. The entry contains 3498 atoms, of which 0 are hydrogens and 0 are deuteriums.

In the tables below, the ZeroOcc column contains the number of atoms modelled with zero occupancy, the AltConf column contains the number of residues with at least one atom in alternate conformation and the Trace column contains the number of residues modelled with at most 2 atoms.

- Molecule 1 is a protein called DNA gyrase subunit B.

Mol	Chain	Residues	Atoms					ZeroOcc	AltConf	Trace
			Total	C	N	O	S			
1	A	192	1590	1003	273	312	2	0	7	0
1	B	192	1609	1016	272	318	3	0	12	0

There are 50 discrepancies between the modelled and reference sequences:

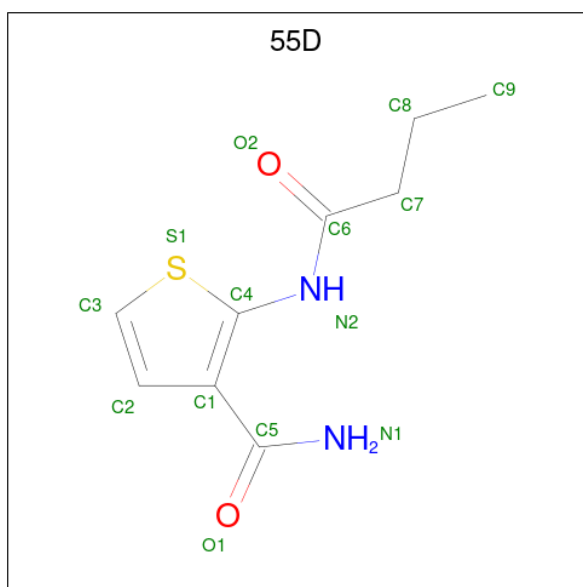
Chain	Residue	Modelled	Actual	Comment	Reference
A	0	GLY	-	expression tag	UNP P0A0K8
A	1	SER	-	expression tag	UNP P0A0K8
A	?	-	VAL	deletion	UNP P0A0K8
A	?	-	LEU	deletion	UNP P0A0K8
A	?	-	HIS	deletion	UNP P0A0K8
A	?	-	ALA	deletion	UNP P0A0K8
A	?	-	GLY	deletion	UNP P0A0K8
A	?	-	GLY	deletion	UNP P0A0K8
A	?	-	LYS	deletion	UNP P0A0K8
A	?	-	PHE	deletion	UNP P0A0K8
A	?	-	GLY	deletion	UNP P0A0K8
A	?	-	GLY	deletion	UNP P0A0K8
A	?	-	GLY	deletion	UNP P0A0K8
A	?	-	GLY	deletion	UNP P0A0K8
A	?	-	TYR	deletion	UNP P0A0K8
A	?	-	LYS	deletion	UNP P0A0K8
A	?	-	VAL	deletion	UNP P0A0K8
A	?	-	SER	deletion	UNP P0A0K8
A	?	-	GLY	deletion	UNP P0A0K8
A	?	-	GLY	deletion	UNP P0A0K8
A	?	-	LEU	deletion	UNP P0A0K8
A	?	-	HIS	deletion	UNP P0A0K8
A	?	-	GLY	deletion	UNP P0A0K8
A	?	-	VAL	deletion	UNP P0A0K8
A	?	-	GLY	deletion	UNP P0A0K8

*Continued on next page...*

*Continued from previous page...*

Chain	Residue	Modelled	Actual	Comment	Reference
B	0	GLY	-	expression tag	UNP P0A0K8
B	1	SER	-	expression tag	UNP P0A0K8
B	?	-	VAL	deletion	UNP P0A0K8
B	?	-	LEU	deletion	UNP P0A0K8
B	?	-	HIS	deletion	UNP P0A0K8
B	?	-	ALA	deletion	UNP P0A0K8
B	?	-	GLY	deletion	UNP P0A0K8
B	?	-	GLY	deletion	UNP P0A0K8
B	?	-	LYS	deletion	UNP P0A0K8
B	?	-	PHE	deletion	UNP P0A0K8
B	?	-	GLY	deletion	UNP P0A0K8
B	?	-	GLY	deletion	UNP P0A0K8
B	?	-	GLY	deletion	UNP P0A0K8
B	?	-	GLY	deletion	UNP P0A0K8
B	?	-	TYR	deletion	UNP P0A0K8
B	?	-	LYS	deletion	UNP P0A0K8
B	?	-	VAL	deletion	UNP P0A0K8
B	?	-	SER	deletion	UNP P0A0K8
B	?	-	GLY	deletion	UNP P0A0K8
B	?	-	GLY	deletion	UNP P0A0K8
B	?	-	LEU	deletion	UNP P0A0K8
B	?	-	HIS	deletion	UNP P0A0K8
B	?	-	GLY	deletion	UNP P0A0K8
B	?	-	VAL	deletion	UNP P0A0K8
B	?	-	GLY	deletion	UNP P0A0K8

- Molecule 2 is 2-(butanoylamino)thiophene-3-carboxamide (three-letter code: 55D) (formula: C<sub>9</sub>H<sub>12</sub>N<sub>2</sub>O<sub>2</sub>S).



Mol	Chain	Residues	Atoms					ZeroOcc	AltConf
			Total	C	N	O	S		
2	A	1	14	9	2	2	1	0	0
2	B	1	14	9	2	2	1	0	0

- Molecule 3 is MAGNESIUM ION (three-letter code: MG) (formula: Mg).

Mol	Chain	Residues	Atoms		ZeroOcc	AltConf
			Total	Mg		
3	A	1	1	1	0	0
3	B	1	1	1	0	0

- Molecule 4 is CHLORIDE ION (three-letter code: CL) (formula: Cl).

Mol	Chain	Residues	Atoms		ZeroOcc	AltConf
			Total	Cl		
4	A	1	1	1	0	0
4	B	1	1	1	0	0

- Molecule 5 is (4S)-2-METHYL-2,4-PENTANEDIOL (three-letter code: MPD) (formula: C<sub>6</sub>H<sub>14</sub>O<sub>2</sub>).



Mol	Chain	Residues	Atoms	ZeroOcc	AltConf
5	A	1	Total C O 8 6 2	0	0
5	A	1	Total C O 8 6 2	0	0
5	B	1	Total C O 8 6 2	0	0
5	B	1	Total C O 8 6 2	0	0
5	B	1	Total C O 8 6 2	0	0


- Molecule 6 is water.

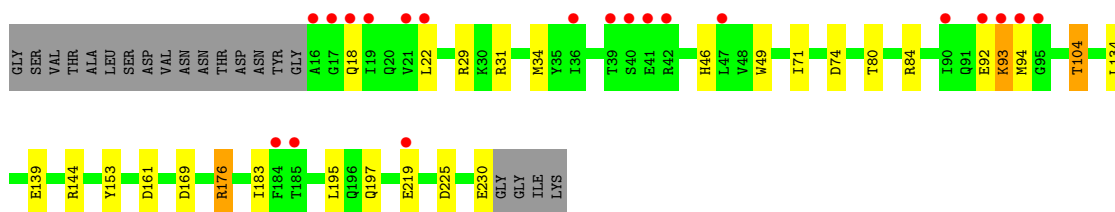
Mol	Chain	Residues	Atoms	ZeroOcc	AltConf
6	A	106	Total O 106 106	0	0
6	B	120	Total O 121 121	0	2

### 3 Residue-property plots [i](#)


These plots are drawn for all protein, RNA, DNA and oligosaccharide chains in the entry. The first graphic for a chain summarises the proportions of the various outlier classes displayed in the second graphic. The second graphic shows the sequence view annotated by issues in geometry and electron density. Residues are color-coded according to the number of geometric quality criteria for which they contain at least one outlier: green = 0, yellow = 1, orange = 2 and red = 3 or more. A red dot above a residue indicates a poor fit to the electron density ( $RSRZ > 2$ ). Stretches of 2 or more consecutive residues without any outlier are shown as a green connector. Residues present in the sample, but not in the model, are shown in grey.

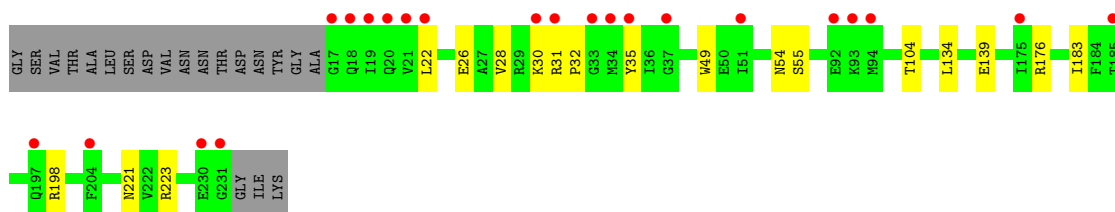
- Molecule 1: DNA gyrase subunit B

Chain A: 



- Molecule 1: DNA gyrase subunit B

Chain B: 



## 4 Data and refinement statistics

Property	Value	Source
Space group	C 1 2 1	Depositor
Cell constants a, b, c, $\alpha$ , $\beta$ , $\gamma$	141.32Å 56.08Å 50.18Å 90.00° 98.99° 90.00°	Depositor
Resolution (Å)	27.50 – 1.48 27.50 – 1.48	Depositor EDS
% Data completeness (in resolution range)	89.7 (27.50-1.48) 89.7 (27.50-1.48)	Depositor EDS
$R_{merge}$	(Not available)	Depositor
$R_{sym}$	0.04	Depositor
$\langle I/\sigma(I) \rangle$ <sup>1</sup>	2.13 (at 1.48Å)	Xtrriage
Refinement program	REFMAC 5.8.0103	Depositor
R, $R_{free}$	0.216 , 0.264 0.222 , 0.266	Depositor DCC
$R_{free}$ test set	2961 reflections (5.06%)	wwPDB-VP
Wilson B-factor (Å <sup>2</sup> )	19.8	Xtrriage
Anisotropy	0.240	Xtrriage
Bulk solvent $k_{sol}$ (e/Å <sup>3</sup> ), $B_{sol}$ (Å <sup>2</sup> )	0.39 , 46.9	EDS
L-test for twinning <sup>2</sup>	$\langle  L  \rangle = 0.49$ , $\langle L^2 \rangle = 0.32$	Xtrriage
Estimated twinning fraction	No twinning to report.	Xtrriage
$F_o, F_c$ correlation	0.96	EDS
Total number of atoms	3498	wwPDB-VP
Average B, all atoms (Å <sup>2</sup> )	27.0	wwPDB-VP

Xtrriage's analysis on translational NCS is as follows: *The largest off-origin peak in the Patterson function is 8.07% of the height of the origin peak. No significant pseudotranslation is detected.*

<sup>1</sup>Intensities estimated from amplitudes.

<sup>2</sup>Theoretical values of  $\langle |L| \rangle$ ,  $\langle L^2 \rangle$  for acentric reflections are 0.5, 0.333 respectively for untwinned datasets, and 0.375, 0.2 for perfectly twinned datasets.



## 5 Model quality [i](#)

### 5.1 Standard geometry [i](#)

Bond lengths and bond angles in the following residue types are not validated in this section: MG, CL, MPD, 55D

The Z score for a bond length (or angle) is the number of standard deviations the observed value is removed from the expected value. A bond length (or angle) with  $|Z| > 5$  is considered an outlier worth inspection. RMSZ is the root-mean-square of all Z scores of the bond lengths (or angles).

Mol	Chain	Bond lengths		Bond angles	
		RMSZ	# Z  >5	RMSZ	# Z  >5
1	A	1.03	1/1637 (0.1%)	1.08	9/2215 (0.4%)
1	B	0.95	1/1670 (0.1%)	0.99	1/2258 (0.0%)
All	All	0.99	2/3307 (0.1%)	1.04	10/4473 (0.2%)

Chiral center outliers are detected by calculating the chiral volume of a chiral center and verifying if the center is modelled as a planar moiety or with the opposite hand. A planarity outlier is detected by checking planarity of atoms in a peptide group, atoms in a mainchain group or atoms of a sidechain that are expected to be planar.

Mol	Chain	#Chirality outliers	#Planarity outliers
1	A	0	1

All (2) bond length outliers are listed below:

Mol	Chain	Res	Type	Atoms	Z	Observed(Å)	Ideal(Å)
1	A	153	TYR	CG-CD1	5.95	1.46	1.39
1	B	55	SER	C-O	-5.17	1.13	1.23

All (10) bond angle outliers are listed below:

Mol	Chain	Res	Type	Atoms	Z	Observed(°)	Ideal(°)
1	A	104	THR	O-C-N	-9.01	108.29	122.70
1	A	74	ASP	CB-CG-OD2	-7.16	111.86	118.30
1	B	104	THR	O-C-N	-6.26	112.69	122.70
1	A	144	ARG	NE-CZ-NH1	5.98	123.29	120.30
1	A	161	ASP	CB-CG-OD1	5.58	123.33	118.30
1	A	225	ASP	CB-CG-OD2	-5.39	113.45	118.30
1	A	153	TYR	CB-CG-CD1	5.36	124.21	121.00
1	A	144	ARG	NE-CZ-NH2	-5.24	117.68	120.30
1	A	29	ARG	NE-CZ-NH1	5.21	122.90	120.30

*Continued on next page...*

Continued from previous page...

Mol	Chain	Res	Type	Atoms	Z	Observed(°)	Ideal(°)
1	A	169	ASP	CB-CG-OD1	5.10	122.89	118.30

There are no chirality outliers.

All (1) planarity outliers are listed below:

Mol	Chain	Res	Type	Group
1	A	104	THR	Mainchain

## 5.2 Too-close contacts [i](#)

In the following table, the Non-H and H(model) columns list the number of non-hydrogen atoms and hydrogen atoms in the chain respectively. The H(added) column lists the number of hydrogen atoms added and optimized by MolProbity. The Clashes column lists the number of clashes within the asymmetric unit, whereas Symm-Clashes lists symmetry-related clashes.

Mol	Chain	Non-H	H(model)	H(added)	Clashes	Symm-Clashes
1	A	1590	0	1579	14	0
1	B	1609	0	1611	10	0
2	A	14	0	12	2	0
2	B	14	0	12	0	0
3	A	1	0	0	0	0
3	B	1	0	0	0	0
4	A	1	0	0	0	0
4	B	1	0	0	0	0
5	A	16	0	28	1	0
5	B	24	0	42	0	0
6	A	106	0	0	1	0
6	B	121	0	0	3	0
All	All	3498	0	3284	25	0

The all-atom clashscore is defined as the number of clashes found per 1000 atoms (including hydrogen atoms). The all-atom clashscore for this structure is 4.

All (25) close contacts within the same asymmetric unit are listed below, sorted by their clash magnitude.

Atom-1	Atom-2	Interatomic distance (Å)	Clash overlap (Å)
1:A:197[B]:GLN:NE2	6:A:401:HOH:O	1.83	1.11
1:A:93:LYS:HD3	1:A:94:MET:HG2	1.66	0.77
1:B:221[B]:ASN:OD1	6:B:401:HOH:O	2.04	0.73

Continued on next page...

Continued from previous page...

Atom-1	Atom-2	Interatomic distance (Å)	Clash overlap (Å)
1:A:46:HIS:HA	1:A:49:TRP:CD1	2.43	0.53
1:A:197[B]:GLN:HA	1:A:197[B]:GLN:HE21	1.74	0.52
1:B:26:GLU:O	1:B:30[B]:LYS:HD3	2.11	0.51
1:A:134:LEU:HD22	1:A:183:ILE:HG21	1.93	0.50
1:A:71:ILE:HD11	1:A:195:LEU:HD12	1.94	0.50
2:A:301:55D:O2	2:A:301:55D:S1	2.70	0.50
1:B:22:LEU:O	1:B:26:GLU:HG2	2.12	0.50
1:A:84:ARG:CZ	2:A:301:55D:H6	2.42	0.48
1:B:31:ARG:O	1:B:32:PRO:C	2.50	0.48
1:A:139[B]:GLU:OE1	1:A:176:ARG:HD3	2.14	0.47
1:B:223:ARG:NH1	6:B:404:HOH:O	2.38	0.47
1:B:139[B]:GLU:OE2	1:B:176:ARG:HD3	2.15	0.46
1:A:31:ARG:HD2	1:A:34:MET:SD	2.56	0.46
1:B:134:LEU:HD22	1:B:183[B]:ILE:HD13	1.99	0.45
1:B:28:VAL:HA	1:B:35:TYR:CE1	2.52	0.45
1:B:49:TRP:CH2	1:B:198:ARG:HB3	2.53	0.44
1:B:54:ASN:ND2	6:B:409:HOH:O	2.48	0.42
1:A:80:THR:CG2	5:A:304:MPD:H13	2.51	0.41
1:A:18:GLN:O	1:A:22[B]:LEU:HD22	2.22	0.40
1:A:49:TRP:CH2	1:A:195:LEU:HD23	2.57	0.40

There are no symmetry-related clashes.

## 5.3 Torsion angles [i](#)

### 5.3.1 Protein backbone [i](#)

In the following table, the Percentiles column shows the percent Ramachandran outliers of the chain as a percentile score with respect to all X-ray entries followed by that with respect to entries of similar resolution.

The Analysed column shows the number of residues for which the backbone conformation was analysed, and the total number of residues.

Mol	Chain	Analysed	Favoured	Allowed	Outliers	Percentiles	
1	A	197/212 (93%)	189 (96%)	7 (4%)	1 (0%)	29	9
1	B	202/212 (95%)	197 (98%)	5 (2%)	0	100	100
All	All	399/424 (94%)	386 (97%)	12 (3%)	1 (0%)	41	18

All (1) Ramachandran outliers are listed below:

Mol	Chain	Res	Type
1	A	219	GLU

### 5.3.2 Protein sidechains [i](#)

In the following table, the Percentiles column shows the percent sidechain outliers of the chain as a percentile score with respect to all X-ray entries followed by that with respect to entries of similar resolution.

The Analysed column shows the number of residues for which the sidechain conformation was analysed, and the total number of residues.

Mol	Chain	Analysed	Rotameric	Outliers	Percentiles	
1	A	175/183 (96%)	171 (98%)	4 (2%)	50	19
1	B	180/183 (98%)	180 (100%)	0	100	100
All	All	355/366 (97%)	351 (99%)	4 (1%)	71	50

All (4) residues with a non-rotameric sidechain are listed below:

Mol	Chain	Res	Type
1	A	92	GLU
1	A	93	LYS
1	A	176	ARG
1	A	230	GLU

Sometimes sidechains can be flipped to improve hydrogen bonding and reduce clashes. All (2) such sidechains are listed below:

Mol	Chain	Res	Type
1	A	150	HIS
1	B	54	ASN

### 5.3.3 RNA [i](#)

There are no RNA molecules in this entry.

## 5.4 Non-standard residues in protein, DNA, RNA chains [i](#)

There are no non-standard protein/DNA/RNA residues in this entry.

## 5.5 Carbohydrates [i](#)

There are no monosaccharides in this entry.

## 5.6 Ligand geometry [i](#)

Of 11 ligands modelled in this entry, 4 are monoatomic - leaving 7 for Mogul analysis.

In the following table, the Counts columns list the number of bonds (or angles) for which Mogul statistics could be retrieved, the number of bonds (or angles) that are observed in the model and the number of bonds (or angles) that are defined in the Chemical Component Dictionary. The Link column lists molecule types, if any, to which the group is linked. The Z score for a bond length (or angle) is the number of standard deviations the observed value is removed from the expected value. A bond length (or angle) with  $|Z| > 2$  is considered an outlier worth inspection. RMSZ is the root-mean-square of all Z scores of the bond lengths (or angles).

Mol	Type	Chain	Res	Link	Bond lengths			Bond angles		
					Counts	RMSZ	# Z  > 2	Counts	RMSZ	# Z  > 2
5	MPD	B	306	-	7,7,7	0.38	0	9,10,10	0.27	0
5	MPD	A	304	-	7,7,7	0.69	0	9,10,10	0.94	0
5	MPD	B	304	-	7,7,7	0.37	0	9,10,10	0.74	0
5	MPD	A	305	-	7,7,7	0.31	0	9,10,10	0.62	0
2	55D	B	301	-	13,14,14	1.40	2 (15%)	9,18,18	2.13	3 (33%)
2	55D	A	301	-	13,14,14	0.83	0	9,18,18	1.75	3 (33%)
5	MPD	B	305	-	7,7,7	0.55	0	9,10,10	1.43	1 (11%)

In the following table, the Chirals column lists the number of chiral outliers, the number of chiral centers analysed, the number of these observed in the model and the number defined in the Chemical Component Dictionary. Similar counts are reported in the Torsion and Rings columns. '-' means no outliers of that kind were identified.

Mol	Type	Chain	Res	Link	Chirals	Torsions	Rings
5	MPD	B	306	-	-	2/5/5/5	-
5	MPD	A	304	-	-	0/5/5/5	-
5	MPD	B	304	-	-	5/5/5/5	-
5	MPD	A	305	-	-	0/5/5/5	-
2	55D	B	301	-	-	0/6/11/11	0/1/1/1
2	55D	A	301	-	-	0/6/11/11	0/1/1/1
5	MPD	B	305	-	-	1/5/5/5	-

All (2) bond length outliers are listed below:

Mol	Chain	Res	Type	Atoms	Z	Observed(Å)	Ideal(Å)
2	B	301	55D	C1-C5	-2.94	1.46	1.50
2	B	301	55D	C5-N1	2.18	1.37	1.33

All (7) bond angle outliers are listed below:

Mol	Chain	Res	Type	Atoms	Z	Observed(°)	Ideal(°)
2	B	301	55D	O1-C5-N1	-5.06	115.39	122.58
5	B	305	MPD	O2-C2-C3	3.66	123.55	109.80
2	A	301	55D	O2-C6-C7	2.89	127.30	122.02
2	A	301	55D	O1-C5-C1	2.63	123.33	120.24
2	B	301	55D	O1-C5-C1	2.39	123.05	120.24
2	A	301	55D	C7-C6-N2	-2.13	110.84	114.59
2	B	301	55D	C1-C5-N1	2.11	121.53	118.29

There are no chirality outliers.

All (8) torsion outliers are listed below:

Mol	Chain	Res	Type	Atoms
5	B	304	MPD	O2-C2-C3-C4
5	B	304	MPD	CM-C2-C3-C4
5	B	304	MPD	C2-C3-C4-C5
5	B	306	MPD	C2-C3-C4-O4
5	B	304	MPD	C1-C2-C3-C4
5	B	305	MPD	CM-C2-C3-C4
5	B	306	MPD	C2-C3-C4-C5
5	B	304	MPD	C2-C3-C4-O4

There are no ring outliers.

2 monomers are involved in 3 short contacts:

Mol	Chain	Res	Type	Clashes	Symm-Clashes
5	A	304	MPD	1	0
2	A	301	55D	2	0

## 5.7 Other polymers [\(i\)](#)

There are no such residues in this entry.

## 5.8 Polymer linkage issues [\(i\)](#)

There are no chain breaks in this entry.

## 6 Fit of model and data

### 6.1 Protein, DNA and RNA chains

In the following table, the column labelled ‘#RSRZ > 2’ contains the number (and percentage) of RSRZ outliers, followed by percent RSRZ outliers for the chain as percentile scores relative to all X-ray entries and entries of similar resolution. The OWAB column contains the minimum, median, 95<sup>th</sup> percentile and maximum values of the occupancy-weighted average B-factor per residue. The column labelled ‘Q < 0.9’ lists the number of (and percentage) of residues with an average occupancy less than 0.9.

Mol	Chain	Analysed	<RSRZ>	#RSRZ>2	OWAB(Å <sup>2</sup> )	Q<0.9
1	A	192/212 (90%)	0.51	20 (10%) <b>6</b> <b>6</b>	12, 24, 50, 89	0
1	B	192/212 (90%)	0.69	22 (11%) <b>4</b> <b>4</b>	13, 23, 55, 70	0
All	All	384/424 (90%)	0.60	42 (10%) <b>5</b> <b>5</b>	12, 24, 53, 89	0

All (42) RSRZ outliers are listed below:

Mol	Chain	Res	Type	RSRZ
1	B	34[A]	MET	7.0
1	B	18	GLN	6.9
1	B	19	ILE	6.6
1	B	231	GLY	6.3
1	A	21	VAL	5.9
1	A	16	ALA	5.7
1	B	37	GLY	5.4
1	B	21	VAL	5.2
1	B	92	GLU	4.6
1	B	93	LYS	4.5
1	B	204	PHE	4.3
1	B	20	GLN	4.3
1	B	230	GLU	4.3
1	B	31	ARG	4.2
1	A	17	GLY	4.0
1	B	30[A]	LYS	3.8
1	A	18	GLN	3.8
1	A	92	GLU	3.7
1	B	17	GLY	3.6
1	A	19	ILE	3.6
1	A	94	MET	3.3
1	A	36	ILE	3.2
1	A	90	ILE	3.2
1	A	39	THR	3.2

*Continued on next page...*

*Continued from previous page...*

Mol	Chain	Res	Type	RSRZ
1	B	94	MET	2.9
1	B	22	LEU	2.9
1	A	93	LYS	2.8
1	A	40	SER	2.5
1	A	185	THR	2.4
1	A	22[A]	LEU	2.4
1	B	185	THR	2.4
1	A	95	GLY	2.3
1	A	42	ARG	2.3
1	A	219	GLU	2.3
1	B	33	GLY	2.3
1	B	197	GLN	2.3
1	A	184	PHE	2.2
1	B	51	ILE	2.2
1	B	35	TYR	2.2
1	A	47	LEU	2.1
1	B	175	ILE	2.1
1	A	41	GLU	2.0

## 6.2 Non-standard residues in protein, DNA, RNA chains [i](#)

There are no non-standard protein/DNA/RNA residues in this entry.

## 6.3 Carbohydrates [i](#)

There are no monosaccharides in this entry.

## 6.4 Ligands [i](#)

In the following table, the Atoms column lists the number of modelled atoms in the group and the number defined in the chemical component dictionary. The B-factors column lists the minimum, median, 95<sup>th</sup> percentile and maximum values of B factors of atoms in the group. The column labelled 'Q< 0.9' lists the number of atoms with occupancy less than 0.9.

Mol	Type	Chain	Res	Atoms	RSCC	RSR	B-factors(Å <sup>2</sup> )	Q<0.9
5	MPD	B	306	8/8	0.75	0.16	45,55,58,60	0
5	MPD	B	305	8/8	0.81	0.15	40,45,47,48	0
5	MPD	B	304	8/8	0.84	0.17	37,44,52,58	0
5	MPD	A	305	8/8	0.85	0.12	45,50,51,55	0
5	MPD	A	304	8/8	0.86	0.18	40,46,52,54	0

*Continued on next page...*



*Continued from previous page...*

Mol	Type	Chain	Res	Atoms	RSCC	RSR	B-factors( $\text{\AA}^2$ )	Q<0.9
2	55D	A	301	14/14	0.94	0.10	16,22,29,29	0
2	55D	B	301	14/14	0.95	0.08	17,22,29,29	0
4	CL	A	303	1/1	0.96	0.07	36,36,36,36	0
3	MG	B	302	1/1	0.96	0.07	29,29,29,29	0
4	CL	B	303	1/1	0.97	0.05	28,28,28,28	0
3	MG	A	302	1/1	0.98	0.09	28,28,28,28	0

## 6.5 Other polymers [i](#)

There are no such residues in this entry.