



Full wwPDB X-ray Structure Validation Report

May 26, 2020 – 08:48 pm BST

PDB ID : 4CX5
Title : Structure of rat neuronal nitric oxide synthase H341L mutant heme domain in complex with 4-METHYL-6-(((3R,4R)-4-((5-(PYRIDIN-2-YL) PENTYL)OXY)PYRROLIDIN-3-YL)METHYL)PYRIDIN-2-AMINE
Authors : Li, H.; Poulos, T.L.
Deposited on : 2014-04-03
Resolution : 1.80 Å(reported)

This is a Full wwPDB X-ray Structure Validation Report for a publicly released PDB entry.

We welcome your comments at validation@mail.wwpdb.org

A user guide is available at

<https://www.wwpdb.org/validation/2017/XrayValidationReportHelp>

with specific help available everywhere you see the  symbol.

The following versions of software and data (see [references](#) ) were used in the production of this report:

MolProbity : 4.02b-467
Mogul : 1.8.5 (274361), CSD as541be (2020)
Xtriage (Phenix) : 1.13
EDS : 2.11
buster-report : 1.1.7 (2018)
Percentile statistics : 20191225.v01 (using entries in the PDB archive December 25th 2019)
Refmac : 5.8.0158
CCP4 : 7.0.044 (Gargrove)
Ideal geometry (proteins) : Engh & Huber (2001)
Ideal geometry (DNA, RNA) : Parkinson et al. (1996)
Validation Pipeline (wwPDB-VP) : 2.11

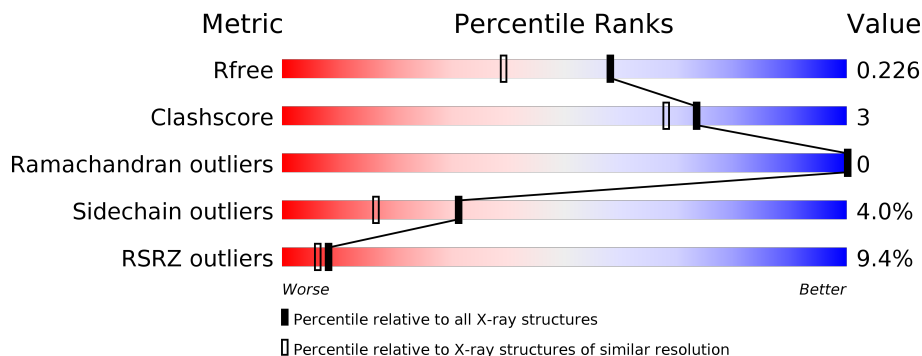
1 Overall quality at a glance i

The following experimental techniques were used to determine the structure:

X-RAY DIFFRACTION

The reported resolution of this entry is 1.80 Å.

Percentile scores (ranging between 0-100) for global validation metrics of the entry are shown in the following graphic. The table shows the number of entries on which the scores are based.



Metric	Whole archive (#Entries)	Similar resolution (#Entries, resolution range(Å))
R_{free}	130704	5950 (1.80-1.80)
Clashscore	141614	6793 (1.80-1.80)
Ramachandran outliers	138981	6697 (1.80-1.80)
Sidechain outliers	138945	6696 (1.80-1.80)
RSRZ outliers	127900	5850 (1.80-1.80)

The table below summarises the geometric issues observed across the polymeric chains and their fit to the electron density. The red, orange, yellow and green segments on the lower bar indicate the fraction of residues that contain outliers for ≥ 3 , 2, 1 and 0 types of geometric quality criteria respectively. A grey segment represents the fraction of residues that are not modelled. The numeric value for each fraction is indicated below the corresponding segment, with a dot representing fractions $\leq 5\%$. The upper red bar (where present) indicates the fraction of residues that have poor fit to the electron density. The numeric value is given above the bar.

Mol	Chain	Length	Quality of chain
1	A	422	
1	B	422	

2 Entry composition [i](#)

There are 7 unique types of molecules in this entry. The entry contains 7224 atoms, of which 0 are hydrogens and 0 are deuteriums.

In the tables below, the ZeroOcc column contains the number of atoms modelled with zero occupancy, the AltConf column contains the number of residues with at least one atom in alternate conformation and the Trace column contains the number of residues modelled with at most 2 atoms.

- Molecule 1 is a protein called NITRIC OXIDE SYNTHASE, BRAIN.

Mol	Chain	Residues	Atoms					ZeroOcc	AltConf	Trace
			Total	C	N	O	S			
1	A	408	Total 3326	C 2129	N 567	O 608	S 22	0	3	1
1	B	411	Total 3359	C 2152	N 574	O 612	S 21	0	2	0

There are 2 discrepancies between the modelled and reference sequences:

Chain	Residue	Modelled	Actual	Comment	Reference
A	341	LEU	HIS	engineered mutation	UNP P29476
B	341	LEU	HIS	engineered mutation	UNP P29476

- Molecule 2 is PROTOPORPHYRIN IX CONTAINING FE (three-letter code: HEM) (formula: $C_{34}H_{32}FeN_4O_4$).



Mol	Chain	Residues	Atoms				ZeroOcc	AltConf	
			Total	C	Fe	N			O
2	A	1	Total 43	C 34	Fe 1	N 4	O 4	0	0

Continued on next page...

Continued from previous page...

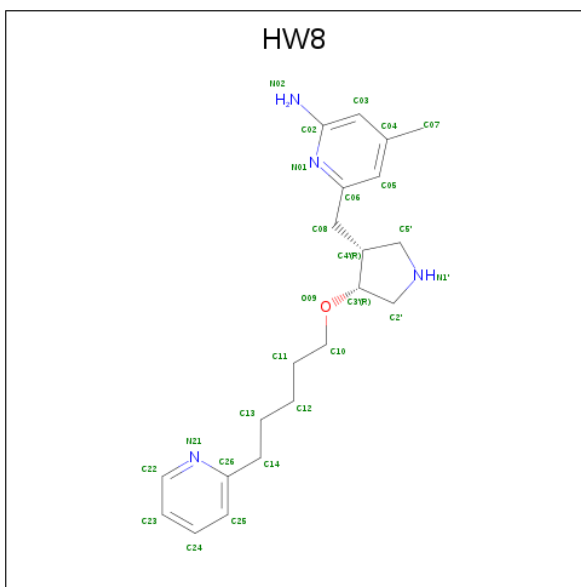
Mol	Chain	Residues	Atoms				ZeroOcc	AltConf	
			Total	C	Fe	N			O
2	B	1	43	34	1	4	4	0	0

- Molecule 3 is 5,6,7,8-TETRAHYDROBIOPTERIN (three-letter code: H4B) (formula: $C_9H_{15}N_5O_3$).



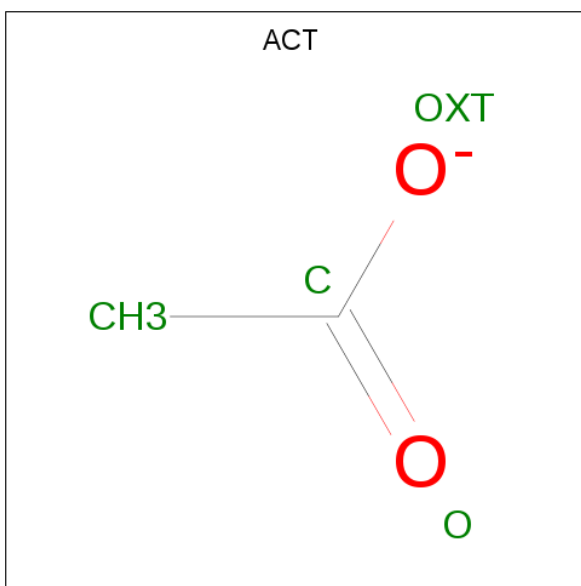
Mol	Chain	Residues	Atoms				ZeroOcc	AltConf
			Total	C	N	O		
3	A	1	17	9	5	3	0	0
3	B	1	17	9	5	3	0	0

- Molecule 4 is 4-methyl-6-[(3R,4R)-4-{[5-(pyridin-2-yl)pentyl]oxy}pyrrolidin-3-yl]methyl}pyridin-2-amine (three-letter code: HW8) (formula: $C_{21}H_{30}N_4O$).



Mol	Chain	Residues	Atoms				ZeroOcc	AltConf
			Total	C	N	O		
4	A	1	26	21	4	1	0	0
4	B	1	26	21	4	1	0	0

- Molecule 5 is ACETATE ION (three-letter code: ACT) (formula: $C_2H_3O_2$).



Mol	Chain	Residues	Atoms			ZeroOcc	AltConf
			Total	C	O		
5	A	1	4	2	2	0	0
5	B	1	4	2	2	0	0

- Molecule 6 is ZINC ION (three-letter code: ZN) (formula: Zn).

Mol	Chain	Residues	Atoms		ZeroOcc	AltConf
6	A	1	Total 1	Zn 1	0	0

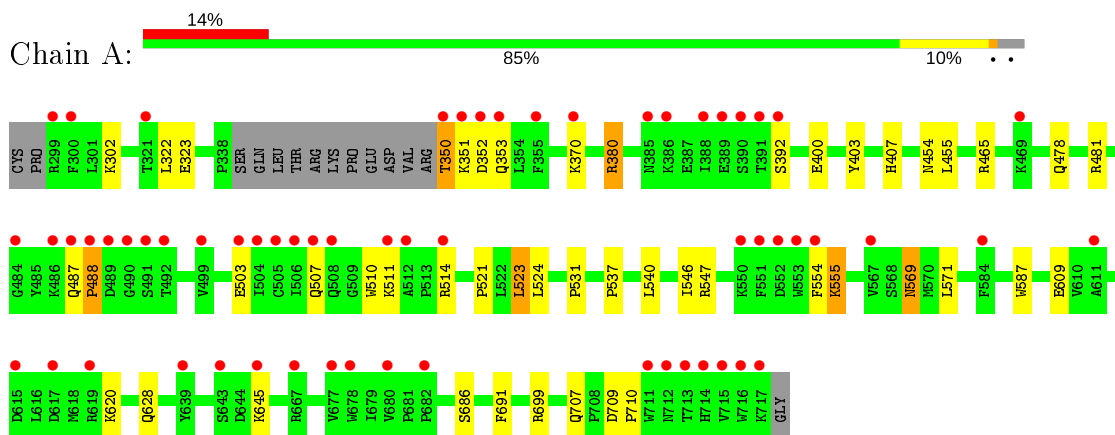
- Molecule 7 is water.

Mol	Chain	Residues	Atoms		ZeroOcc	AltConf
7	A	161	Total 161	O 161	0	0
7	B	197	Total 197	O 197	0	0

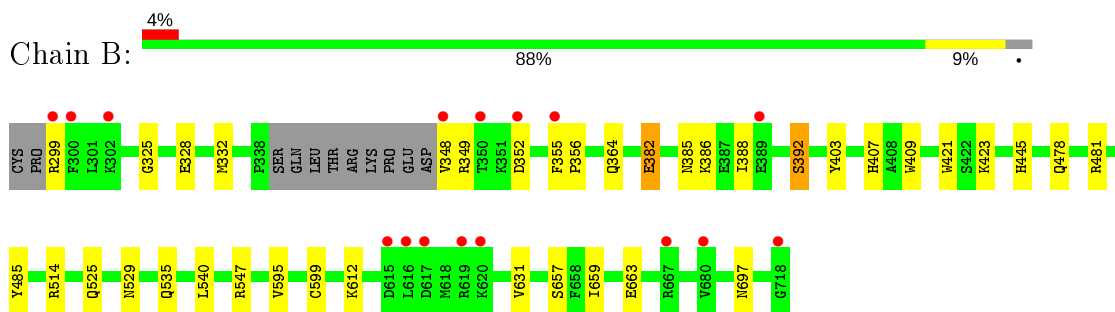
3 Residue-property plots [i](#)

These plots are drawn for all protein, RNA and DNA chains in the entry. The first graphic for a chain summarises the proportions of the various outlier classes displayed in the second graphic. The second graphic shows the sequence view annotated by issues in geometry and electron density. Residues are color-coded according to the number of geometric quality criteria for which they contain at least one outlier: green = 0, yellow = 1, orange = 2 and red = 3 or more. A red dot above a residue indicates a poor fit to the electron density ($RSRZ > 2$). Stretches of 2 or more consecutive residues without any outlier are shown as a green connector. Residues present in the sample, but not in the model, are shown in grey.

- Molecule 1: NITRIC OXIDE SYNTHASE, BRAIN



- Molecule 1: NITRIC OXIDE SYNTHASE, BRAIN



4 Data and refinement statistics

Property	Value	Source
Space group	P 21 21 21	Depositor
Cell constants a, b, c, α , β , γ	52.06Å 110.74Å 164.19Å 90.00° 90.00° 90.00°	Depositor
Resolution (Å)	91.98 – 1.80 38.49 – 1.80	Depositor EDS
% Data completeness (in resolution range)	99.6 (91.98-1.80) 99.6 (38.49-1.80)	Depositor EDS
R_{merge}	0.06	Depositor
R_{sym}	(Not available)	Depositor
$\langle I/\sigma(I) \rangle$ ¹	2.61 (at 1.81Å)	Xtrriage
Refinement program	REFMAC 5.8.0049	Depositor
R, R_{free}	0.191 , 0.226 0.191 , 0.226	Depositor DCC
R_{free} test set	4396 reflections (4.97%)	wwPDB-VP
Wilson B-factor (Å ²)	26.3	Xtrriage
Anisotropy	0.826	Xtrriage
Bulk solvent k_{sol} (e/Å ³), B_{sol} (Å ²)	0.37 , 42.1	EDS
L-test for twinning ²	$\langle L \rangle = 0.49$, $\langle L^2 \rangle = 0.33$	Xtrriage
Estimated twinning fraction	No twinning to report.	Xtrriage
F_o, F_c correlation	0.96	EDS
Total number of atoms	7224	wwPDB-VP
Average B, all atoms (Å ²)	42.0	wwPDB-VP

Xtrriage's analysis on translational NCS is as follows: *The largest off-origin peak in the Patterson function is 4.35% of the height of the origin peak. No significant pseudotranslation is detected.*

¹ Intensities estimated from amplitudes.

² Theoretical values of $\langle |L| \rangle$, $\langle L^2 \rangle$ for acentric reflections are 0.5, 0.333 respectively for untwinned datasets, and 0.375, 0.2 for perfectly twinned datasets.

5 Model quality [i](#)

5.1 Standard geometry [i](#)

Bond lengths and bond angles in the following residue types are not validated in this section: HEM, ZN, H4B, HW8, ACT

The Z score for a bond length (or angle) is the number of standard deviations the observed value is removed from the expected value. A bond length (or angle) with $|Z| > 5$ is considered an outlier worth inspection. RMSZ is the root-mean-square of all Z scores of the bond lengths (or angles).

Mol	Chain	Bond lengths		Bond angles	
		RMSZ	# Z >5	RMSZ	# Z >5
1	A	0.55	0/3428	0.65	0/4651
1	B	0.57	0/3459	0.67	0/4690
All	All	0.56	0/6887	0.66	0/9341

There are no bond length outliers.

There are no bond angle outliers.

There are no chirality outliers.

There are no planarity outliers.

5.2 Too-close contacts [i](#)

In the following table, the Non-H and H(model) columns list the number of non-hydrogen atoms and hydrogen atoms in the chain respectively. The H(added) column lists the number of hydrogen atoms added and optimized by MolProbity. The Clashes column lists the number of clashes within the asymmetric unit, whereas Symm-Clashes lists symmetry related clashes.

Mol	Chain	Non-H	H(model)	H(added)	Clashes	Symm-Clashes
1	A	3326	0	3237	23	0
1	B	3359	0	3274	20	0
2	A	43	0	30	2	0
2	B	43	0	30	2	0
3	A	17	0	15	0	0
3	B	17	0	15	0	0
4	A	26	0	30	1	0
4	B	26	0	30	0	0
5	A	4	0	3	0	0
5	B	4	0	3	1	0
6	A	1	0	0	0	0

Continued on next page...

Continued from previous page...

Mol	Chain	Non-H	H(model)	H(added)	Clashes	Symm-Clashes
7	A	161	0	0	2	0
7	B	197	0	0	1	0
All	All	7224	0	6667	45	0

The all-atom clashscore is defined as the number of clashes found per 1000 atoms (including hydrogen atoms). The all-atom clashscore for this structure is 3.

All (45) close contacts within the same asymmetric unit are listed below, sorted by their clash magnitude.

Atom-1	Atom-2	Interatomic distance (Å)	Clash overlap (Å)
1:A:350:THR:N	1:A:353:GLN:HE21	1.87	0.73
2:B:750:HEM:HHC	2:B:750:HEM:HBB2	1.78	0.67
1:A:523:LEU:HD22	1:A:531:PRO:HB2	1.78	0.63
1:A:380:ARG:HD3	1:A:400:GLU:OE2	2.03	0.58
2:A:750:HEM:HBA1	4:A:800:HW8:H26	1.87	0.56
1:A:628:GLN:HG2	1:B:631:VAL:HG11	1.88	0.55
1:B:355[A]:PHE:CE1	1:B:385:ASN:HB2	2.42	0.54
1:A:537:PRO:HB2	1:A:540:LEU:HG	1.89	0.54
1:B:355[B]:PHE:HB2	1:B:356:PRO:CD	2.39	0.53
1:A:350:THR:N	1:A:353:GLN:NE2	2.56	0.52
1:A:487:GLN:HB3	1:A:488:PRO:HD2	1.91	0.52
1:A:455:LEU:HD12	1:A:587:TRP:HB3	1.91	0.52
1:B:403:TYR:CE2	1:B:407:HIS:CE1	2.99	0.50
2:A:750:HEM:CMC	2:A:750:HEM:HBC2	2.42	0.50
1:B:299:ARG:HB3	1:B:299:ARG:CZ	2.43	0.48
1:B:328:GLU:H	1:B:328:GLU:CD	2.17	0.48
1:B:478:GLN:HB2	1:B:481:ARG:HG3	1.95	0.48
1:A:554:PHE:HB3	7:A:2113:HOH:O	2.13	0.48
1:A:322:LEU:HD13	1:A:699:ARG:HH21	1.80	0.47
1:A:555:LYS:N	7:A:2113:HOH:O	2.41	0.47
1:A:465:ARG:HH12	1:A:571:LEU:HD11	1.80	0.46
1:B:364:GLN:NE2	7:B:2019:HOH:O	2.48	0.46
1:A:351:LYS:HE2	1:A:392:SER:CB	2.46	0.46
2:B:750:HEM:HBC2	2:B:750:HEM:CMC	2.47	0.45
1:B:325:GLY:O	1:B:332:MET:HG3	2.16	0.45
1:B:355[B]:PHE:HB2	1:B:356:PRO:HD3	1.99	0.45
1:A:403:TYR:CE1	1:A:407:HIS:CE1	3.05	0.45
1:B:595:VAL:O	1:B:599:CYS:HB2	2.17	0.45
1:A:478:GLN:HB2	1:A:481:ARG:HG3	2.00	0.44
1:B:388:ILE:O	1:B:392:SER:N	2.45	0.44
1:B:659:ILE:O	1:B:663:GLU:HG3	2.18	0.44

Continued on next page...

Continued from previous page...

Atom-1	Atom-2	Interatomic distance (Å)	Clash overlap (Å)
1:B:657:SER:HB2	5:B:860:ACT:H1	2.00	0.44
1:A:351:LYS:HE2	1:A:392:SER:HB3	2.01	0.43
1:A:569:ASN:O	1:A:707:GLN:HG2	2.19	0.43
1:A:524:LEU:O	1:A:531:PRO:HA	2.20	0.42
1:A:686:SER:HA	1:A:691:PHE:CG	2.54	0.42
1:A:546:ILE:HG22	1:A:554:PHE:HE2	1.85	0.41
1:B:485:TYR:CE2	1:B:514:ARG:HA	2.54	0.41
1:A:510:TRP:CE2	1:A:521:PRO:HD3	2.56	0.41
1:B:525:GLN:HG3	1:B:529:ASN:O	2.21	0.41
1:B:382:GLU:O	1:B:386:LYS:HG3	2.21	0.41
1:B:409:TRP:CE3	1:B:421:TRP:HA	2.56	0.41
1:B:445:HIS:C	1:B:445:HIS:CD2	2.94	0.41
1:A:323:GLU:HA	1:B:328:GLU:O	2.21	0.41
1:A:709:ASP:HA	1:A:710:PRO:HD3	1.92	0.40

There are no symmetry-related clashes.

5.3 Torsion angles [i](#)

5.3.1 Protein backbone [i](#)

In the following table, the Percentiles column shows the percent Ramachandran outliers of the chain as a percentile score with respect to all X-ray entries followed by that with respect to entries of similar resolution.

The Analysed column shows the number of residues for which the backbone conformation was analysed, and the total number of residues.

Mol	Chain	Analysed	Favoured	Allowed	Outliers	Percentiles	
1	A	407/422 (96%)	401 (98%)	6 (2%)	0	100	100
1	B	409/422 (97%)	405 (99%)	4 (1%)	0	100	100
All	All	816/844 (97%)	806 (99%)	10 (1%)	0	100	100

There are no Ramachandran outliers to report.

5.3.2 Protein sidechains [i](#)

In the following table, the Percentiles column shows the percent sidechain outliers of the chain as a percentile score with respect to all X-ray entries followed by that with respect to entries of similar resolution.

The Analysed column shows the number of residues for which the sidechain conformation was analysed, and the total number of residues.

Mol	Chain	Analysed	Rotameric	Outliers	Percentiles	
1	A	366/377 (97%)	348 (95%)	18 (5%)	25	11
1	B	368/377 (98%)	357 (97%)	11 (3%)	41	27
All	All	734/754 (97%)	705 (96%)	29 (4%)	31	16

All (29) residues with a non-rotameric sidechain are listed below:

Mol	Chain	Res	Type
1	A	302	LYS
1	A	350	THR
1	A	352	ASP
1	A	370	LYS
1	A	380	ARG
1	A	454	ASN
1	A	488	PRO
1	A	503	GLU
1	A	507	GLN
1	A	511	LYS
1	A	514	ARG
1	A	523	LEU
1	A	547	ARG
1	A	555	LYS
1	A	569	ASN
1	A	609	GLU
1	A	620	LYS
1	A	645	LYS
1	B	348	VAL
1	B	349	ARG
1	B	352	ASP
1	B	382	GLU
1	B	392	SER
1	B	423	LYS
1	B	535	GLN
1	B	540	LEU
1	B	547	ARG
1	B	612	LYS
1	B	697	ASN

Some sidechains can be flipped to improve hydrogen bonding and reduce clashes. All (17) such sidechains are listed below:

Mol	Chain	Res	Type
1	A	454	ASN
1	A	507	GLN
1	A	527	ASN
1	A	569	ASN
1	A	605	ASN
1	A	628	GLN
1	A	697	ASN
1	B	364	GLN
1	B	385	ASN
1	B	454	ASN
1	B	507	GLN
1	B	527	ASN
1	B	535	GLN
1	B	601	ASN
1	B	605	ASN
1	B	642	GLN
1	B	697	ASN

5.3.3 RNA [i](#)

There are no RNA molecules in this entry.

5.4 Non-standard residues in protein, DNA, RNA chains [i](#)

There are no non-standard protein/DNA/RNA residues in this entry.

5.5 Carbohydrates [i](#)

There are no carbohydrates in this entry.

5.6 Ligand geometry [i](#)

Of 9 ligands modelled in this entry, 1 is monoatomic - leaving 8 for Mogul analysis.

In the following table, the Counts columns list the number of bonds (or angles) for which Mogul statistics could be retrieved, the number of bonds (or angles) that are observed in the model and the number of bonds (or angles) that are defined in the Chemical Component Dictionary. The Link column lists molecule types, if any, to which the group is linked. The Z score for a bond length (or angle) is the number of standard deviations the observed value is removed from the expected value. A bond length (or angle) with $|Z| > 2$ is considered an outlier worth inspection. RMSZ is the root-mean-square of all Z scores of the bond lengths (or angles).

Mol	Type	Chain	Res	Link	Bond lengths			Bond angles		
					Counts	RMSZ	# Z > 2	Counts	RMSZ	# Z > 2
2	HEM	B	750	1	27,50,50	0.95	1 (3%)	17,82,82	2.11	3 (17%)
3	H4B	A	760	-	16,18,18	0.97	2 (12%)	11,26,26	2.80	7 (63%)
5	ACT	A	860	-	1,3,3	1.94	0	0,3,3	0.00	-
5	ACT	B	860	-	1,3,3	2.00	1 (100%)	0,3,3	0.00	-
2	HEM	A	750	1	27,50,50	1.02	2 (7%)	17,82,82	1.50	3 (17%)
4	HW8	B	800	-	27,28,28	0.72	0	30,36,36	1.85	6 (20%)
3	H4B	B	760	-	16,18,18	1.03	0	11,26,26	2.64	5 (45%)
4	HW8	A	800	-	27,28,28	0.69	0	30,36,36	2.36	8 (26%)

In the following table, the Chirals column lists the number of chiral outliers, the number of chiral centers analysed, the number of these observed in the model and the number defined in the Chemical Component Dictionary. Similar counts are reported in the Torsion and Rings columns. '-' means no outliers of that kind were identified.

Mol	Type	Chain	Res	Link	Chirals	Torsions	Rings
2	HEM	B	750	1	-	0/6/54/54	-
3	H4B	A	760	-	-	0/8/17/17	0/2/2/2
2	HEM	A	750	1	-	0/6/54/54	-
4	HW8	B	800	-	-	2/13/23/23	0/3/3/3
3	H4B	B	760	-	-	0/8/17/17	0/2/2/2
4	HW8	A	800	-	-	2/13/23/23	0/3/3/3

All (6) bond length outliers are listed below:

Mol	Chain	Res	Type	Atoms	Z	Observed(Å)	Ideal(Å)
2	A	750	HEM	C3B-C2B	-3.02	1.36	1.40
3	A	760	H4B	C4-N3	2.19	1.36	1.33
2	B	750	HEM	C4D-C3D	2.18	1.47	1.42
2	A	750	HEM	C4D-C3D	2.17	1.47	1.42
3	A	760	H4B	C2-N2	2.05	1.38	1.33
5	B	860	ACT	CH3-C	2.00	1.51	1.48

All (32) bond angle outliers are listed below:

Mol	Chain	Res	Type	Atoms	Z	Observed(°)	Ideal(°)
4	A	800	HW8	C02-N01-C06	7.34	123.66	118.10
2	B	750	HEM	CBA-CAA-C2A	-6.53	100.43	112.49
4	B	800	HW8	C02-N01-C06	6.51	123.03	118.10
3	B	760	H4B	C4-C4A-C8A	5.55	119.50	114.57
3	A	760	H4B	C4-C4A-N5	4.55	122.94	119.12

Continued on next page...

Continued from previous page...

Mol	Chain	Res	Type	Atoms	Z	Observed(°)	Ideal(°)
4	A	800	HW8	C22-N21-C26	4.44	123.50	117.42
4	A	800	HW8	C23-C22-N21	-4.22	116.53	123.43
4	A	800	HW8	C12-C13-C14	-4.01	98.17	113.76
3	A	760	H4B	N3-C2-N1	-4.01	119.14	125.42
4	A	800	HW8	C05-C06-N01	-3.84	118.83	122.90
2	A	750	HEM	CBD-CAD-C3D	-3.68	105.69	112.48
3	B	760	H4B	C4-N3-C2	3.55	121.57	115.93
3	A	760	H4B	C4-N3-C2	3.51	121.50	115.93
4	B	800	HW8	C22-N21-C26	3.41	122.09	117.42
3	B	760	H4B	N3-C2-N1	-3.39	120.10	125.42
2	A	750	HEM	CBA-CAA-C2A	-3.19	106.61	112.49
4	B	800	HW8	C05-C06-N01	-3.13	119.58	122.90
3	A	760	H4B	C4-C4A-C8A	3.11	117.33	114.57
3	A	760	H4B	N2-C2-N3	3.09	122.05	117.25
2	B	750	HEM	CBD-CAD-C3D	-2.88	107.17	112.48
4	A	800	HW8	C24-C25-C26	-2.88	115.34	118.93
4	A	800	HW8	N02-C02-N01	2.83	120.96	116.49
3	A	760	H4B	C2-N1-C8A	2.80	120.81	114.54
4	A	800	HW8	C2'-N1'-C5'	2.60	111.56	105.42
3	B	760	H4B	C2-N1-C8A	2.53	120.22	114.54
4	B	800	HW8	C2'-N1'-C5'	2.26	110.75	105.42
2	A	750	HEM	CMC-C2C-C3C	2.22	128.83	124.68
2	B	750	HEM	C4C-C3C-C2C	2.21	108.44	106.90
3	A	760	H4B	C4A-N5-C6	-2.20	115.16	121.16
4	B	800	HW8	C12-C13-C14	-2.14	105.43	113.76
4	B	800	HW8	C23-C22-N21	-2.07	120.05	123.43
3	B	760	H4B	N2-C2-N1	2.02	120.40	117.25

There are no chirality outliers.

All (4) torsion outliers are listed below:

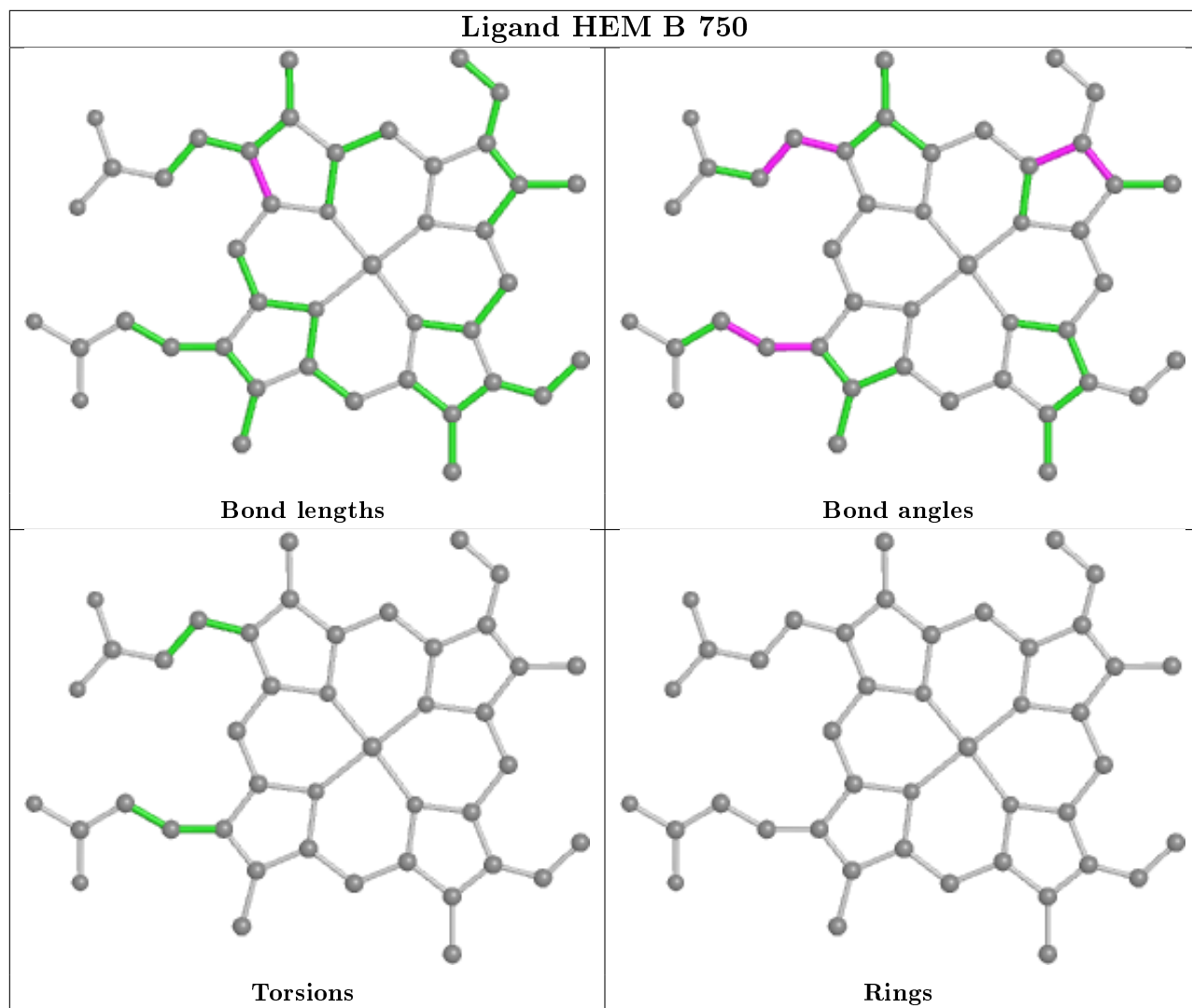
Mol	Chain	Res	Type	Atoms
4	A	800	HW8	C10-C11-C12-C13
4	B	800	HW8	C10-C11-C12-C13
4	B	800	HW8	N01-C06-C08-C4'
4	A	800	HW8	O09-C10-C11-C12

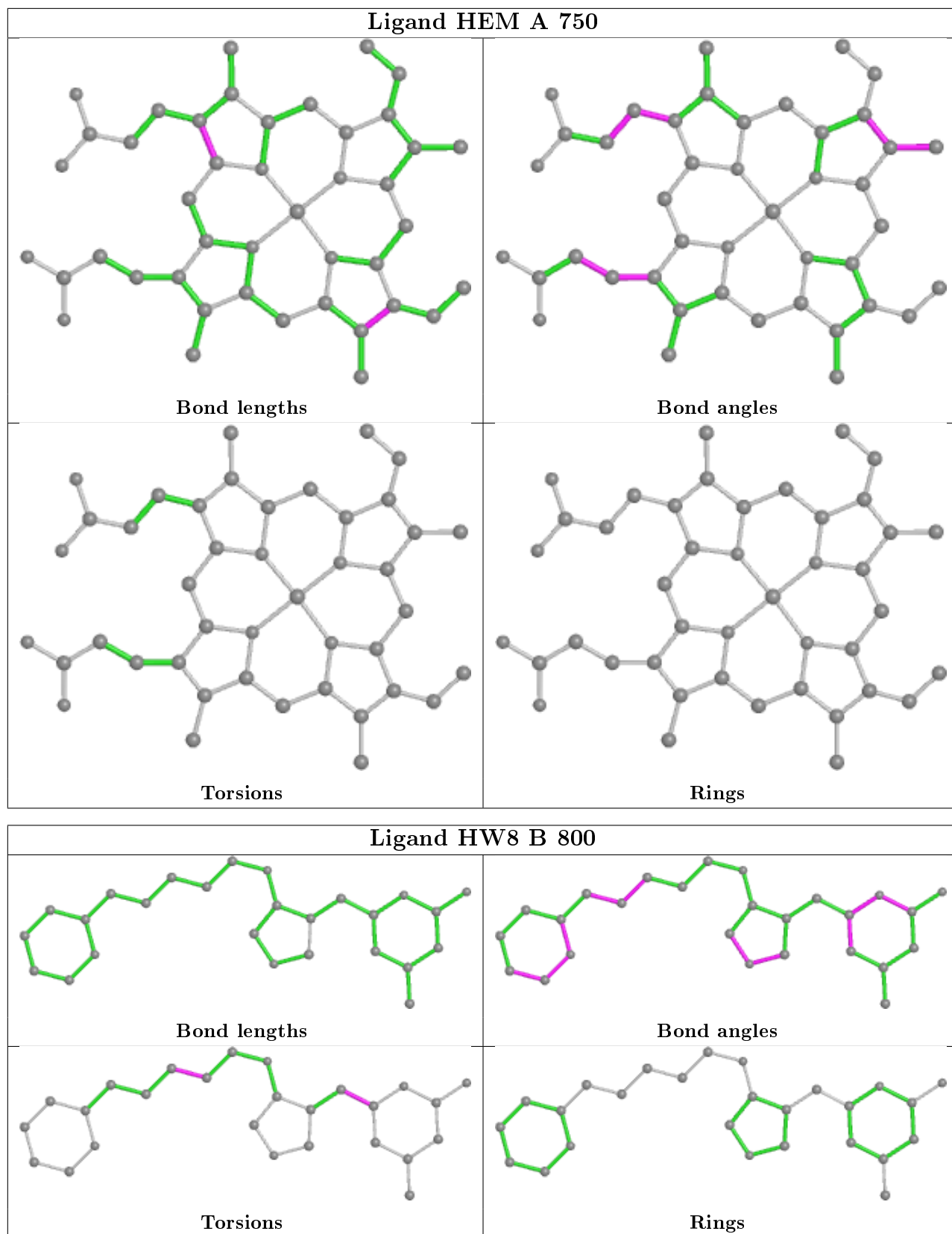
There are no ring outliers.

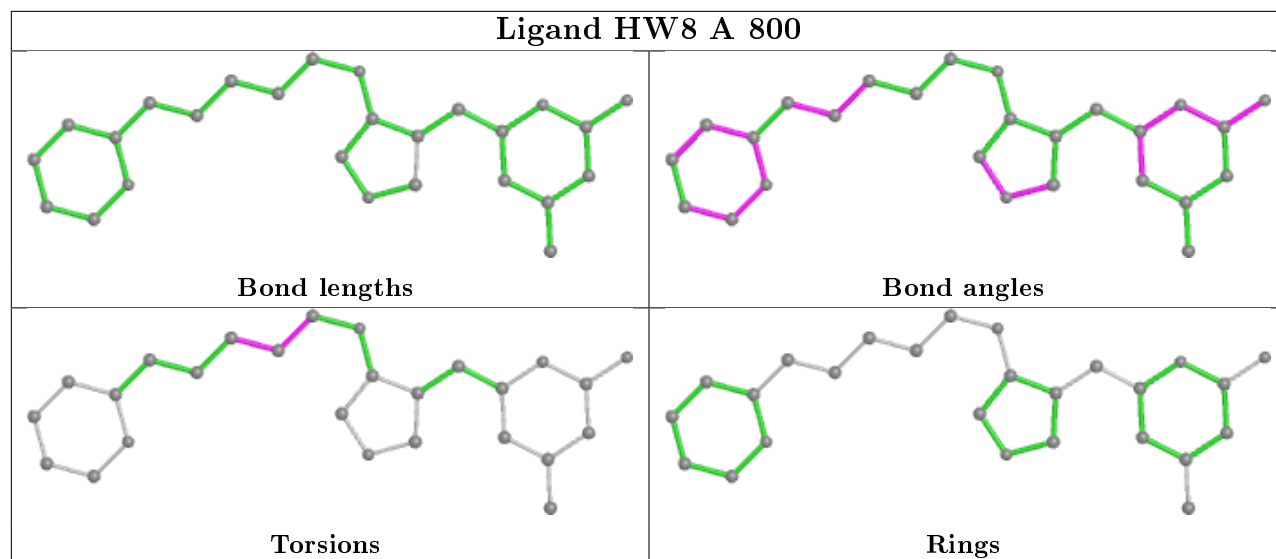
4 monomers are involved in 5 short contacts:

Mol	Chain	Res	Type	Clashes	Symm-Clashes
2	B	750	HEM	2	0
5	B	860	ACT	1	0
2	A	750	HEM	2	0
4	A	800	HW8	1	0

The following is a two-dimensional graphical depiction of Mogul quality analysis of bond lengths, bond angles, torsion angles, and ring geometry for all instances of the Ligand of Interest. In addition, ligands with molecular weight > 250 and outliers as shown on the validation Tables will also be included. For torsion angles, if less than 5% of the Mogul distribution of torsion angles is within 10 degrees of the torsion angle in question, then that torsion angle is considered an outlier. Any bond that is central to one or more torsion angles identified as an outlier by Mogul will be highlighted in the graph. For rings, the root-mean-square deviation (RMSD) between the ring in question and similar rings identified by Mogul is calculated over all ring torsion angles. If the average RMSD is greater than 60 degrees and the minimal RMSD between the ring in question and any Mogul-identified rings is also greater than 60 degrees, then that ring is considered an outlier. The outliers are highlighted in purple. The color gray indicates Mogul did not find sufficient equivalents in the CSD to analyse the geometry.







5.7 Other polymers [i](#)

There are no such residues in this entry.

5.8 Polymer linkage issues [i](#)

There are no chain breaks in this entry.

6 Fit of model and data

6.1 Protein, DNA and RNA chains

In the following table, the column labelled ‘#RSRZ> 2’ contains the number (and percentage) of RSRZ outliers, followed by percent RSRZ outliers for the chain as percentile scores relative to all X-ray entries and entries of similar resolution. The OWAB column contains the minimum, median, 95th percentile and maximum values of the occupancy-weighted average B-factor per residue. The column labelled ‘Q< 0.9’ lists the number of (and percentage) of residues with an average occupancy less than 0.9.

Mol	Chain	Analysed	<RSRZ>	#RSRZ>2	OWAB(Å ²)	Q<0.9
1	A	408/422 (96%)	0.74	61 (14%) 2 1	21, 44, 87, 113	0
1	B	411/422 (97%)	0.06	16 (3%) 39 33	21, 35, 61, 79	0
All	All	819/844 (97%)	0.40	77 (9%) 8 6	21, 39, 78, 113	0

All (77) RSRZ outliers are listed below:

Mol	Chain	Res	Type	RSRZ
1	A	716	TRP	8.4
1	B	300	PHE	7.8
1	A	488	PRO	7.1
1	A	715	VAL	6.6
1	A	713	THR	6.3
1	A	506	ILE	6.0
1	A	355	PHE	5.7
1	A	486	LYS	5.5
1	A	507	GLN	5.1
1	A	352	ASP	4.9
1	A	551	PHE	4.9
1	B	616	LEU	4.9
1	A	490	GLY	4.8
1	A	351	LYS	4.8
1	A	717	LYS	4.7
1	A	491	SER	4.6
1	B	348	VAL	4.6
1	A	388	ILE	4.4
1	B	619	ARG	4.3
1	B	718	GLY	4.2
1	A	386	LYS	4.1
1	A	552	ASP	4.0
1	A	350	THR	3.8
1	A	619	ARG	3.7

Continued on next page...

Continued from previous page...

Mol	Chain	Res	Type	RSRZ
1	A	511	LYS	3.6
1	A	503	GLU	3.6
1	A	508	GLN	3.6
1	A	321	THR	3.6
1	A	389	GLU	3.5
1	A	390	SER	3.3
1	A	554	PHE	3.3
1	A	391	THR	3.3
1	A	617	ASP	3.2
1	A	714	HIS	3.1
1	A	300	PHE	3.1
1	B	299	ARG	3.1
1	A	712	ASN	3.1
1	B	350	THR	3.0
1	A	514	ARG	3.0
1	A	392	SER	2.8
1	A	643	SER	2.8
1	A	639	TYR	2.8
1	A	512	ALA	2.7
1	B	620	LYS	2.7
1	A	505	CYS	2.7
1	A	499	VAL	2.7
1	A	489	ASP	2.7
1	A	469	LYS	2.7
1	A	682	PRO	2.7
1	A	678	TRP	2.7
1	A	487	GLN	2.6
1	A	385	ASN	2.6
1	B	615	ASP	2.6
1	A	553	TRP	2.6
1	A	711	TRP	2.6
1	B	355[A]	PHE	2.5
1	B	667	ARG	2.5
1	A	567	VAL	2.5
1	B	389	GLU	2.3
1	A	667	ARG	2.3
1	A	550	LYS	2.3
1	A	299	ARG	2.3
1	A	492	THR	2.3
1	B	617	ASP	2.3
1	B	680	VAL	2.2
1	A	370	LYS	2.2

Continued on next page...

Continued from previous page...

Mol	Chain	Res	Type	RSRZ
1	A	677	VAL	2.2
1	A	484	GLY	2.2
1	A	645	LYS	2.2
1	A	615	ASP	2.1
1	A	584	PHE	2.1
1	A	611	ALA	2.1
1	B	352	ASP	2.1
1	B	302	LYS	2.1
1	A	680	VAL	2.0
1	A	504	ILE	2.0
1	A	353	GLN	2.0

6.2 Non-standard residues in protein, DNA, RNA chains [i](#)

There are no non-standard protein/DNA/RNA residues in this entry.

6.3 Carbohydrates [i](#)

There are no carbohydrates in this entry.

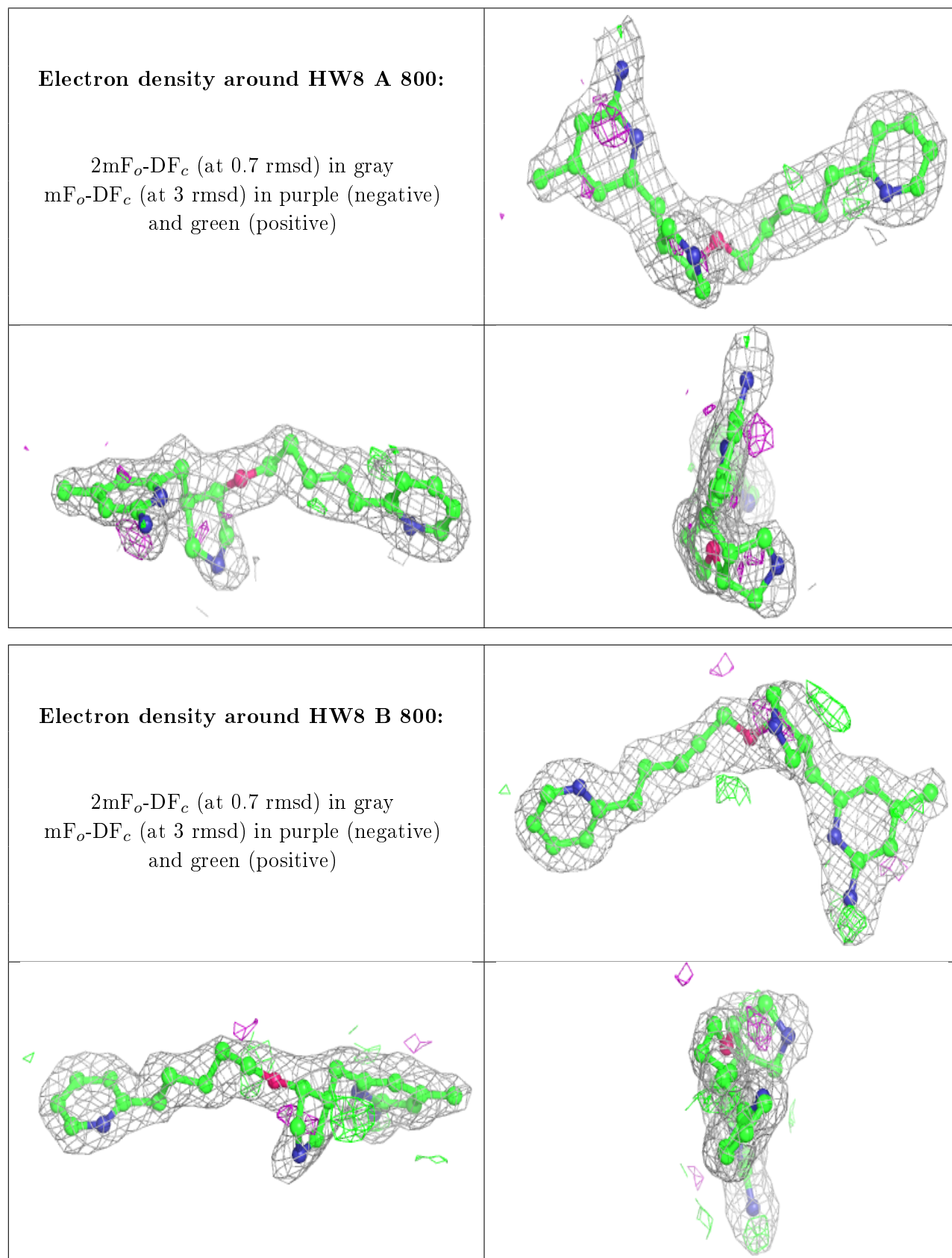
6.4 Ligands [i](#)

In the following table, the Atoms column lists the number of modelled atoms in the group and the number defined in the chemical component dictionary. The B-factors column lists the minimum, median, 95th percentile and maximum values of B factors of atoms in the group. The column labelled 'Q< 0.9' lists the number of atoms with occupancy less than 0.9.

Mol	Type	Chain	Res	Atoms	RSCC	RSR	B-factors(Å ²)	Q<0.9
5	ACT	B	860	4/4	0.80	0.17	57,59,60,60	0
4	HW8	A	800	26/26	0.84	0.20	30,40,49,51	0
5	ACT	A	860	4/4	0.90	0.24	60,64,65,69	0
4	HW8	B	800	26/26	0.92	0.16	28,35,46,48	0
3	H4B	A	760	17/17	0.94	0.15	26,28,30,32	0
2	HEM	B	750	43/43	0.97	0.15	22,24,31,38	0
3	H4B	B	760	17/17	0.97	0.15	25,26,29,30	0
2	HEM	A	750	43/43	0.97	0.17	24,26,37,41	0
6	ZN	A	1721	1/1	0.99	0.07	30,30,30,30	0

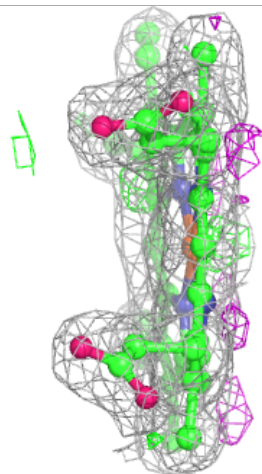
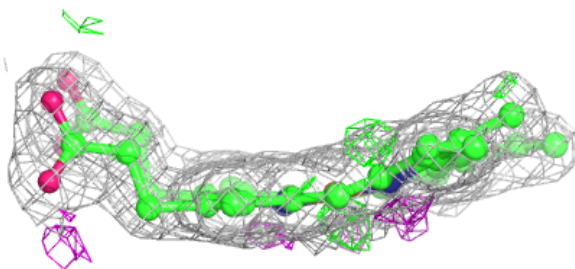
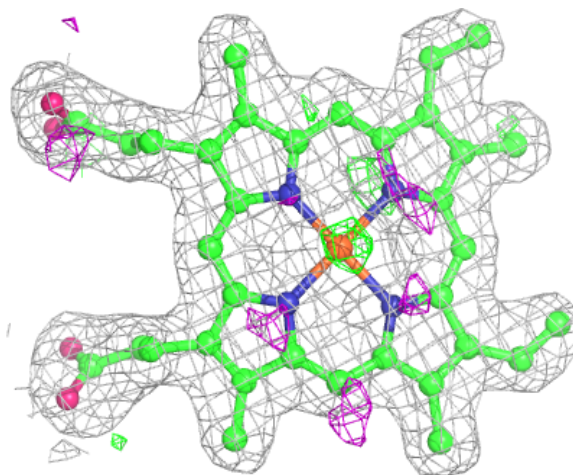
The following is a graphical depiction of the model fit to experimental electron density of all instances of the Ligand of Interest. In addition, ligands with molecular weight > 250 and outliers

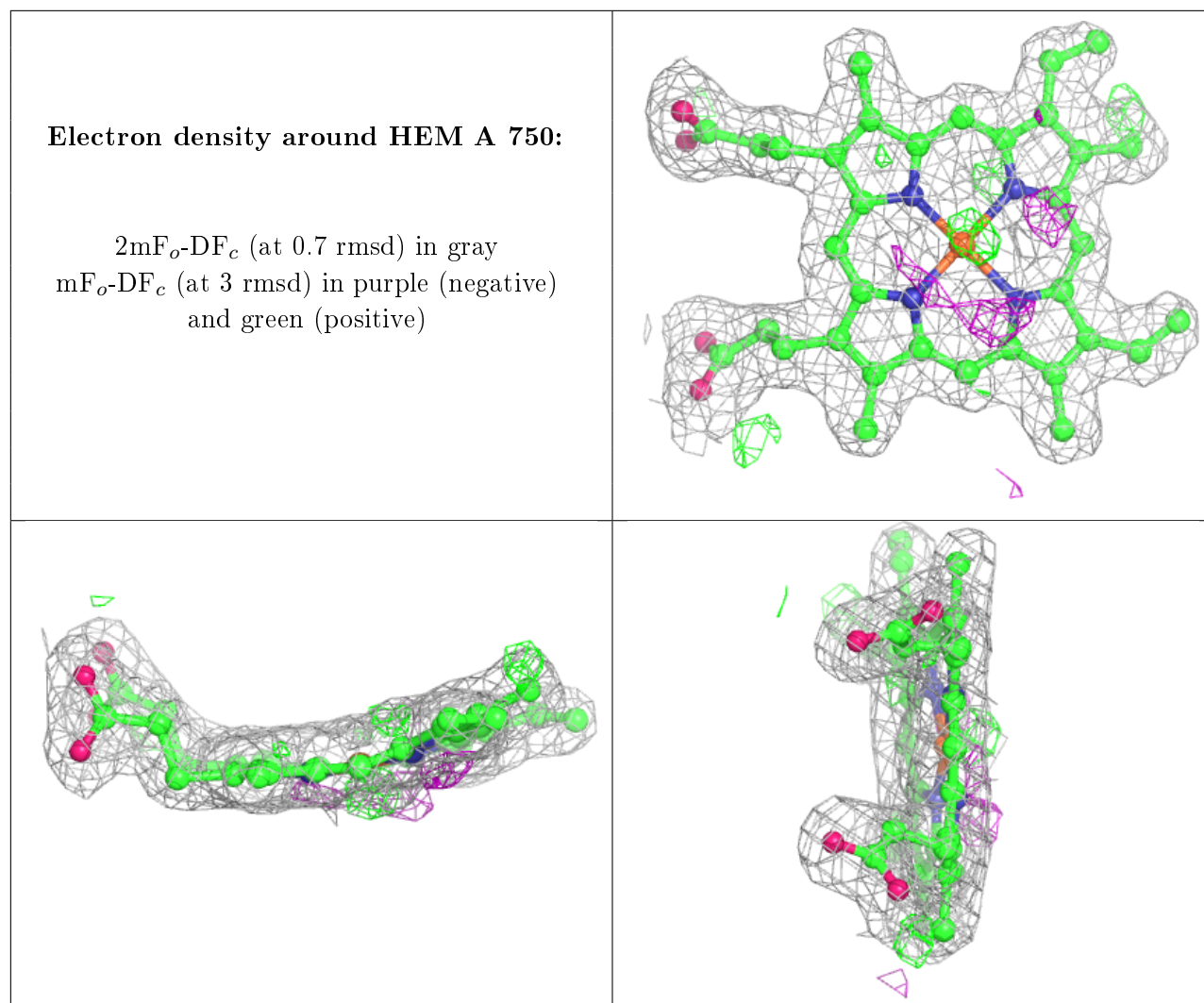
as shown on the geometry validation Tables will also be included. Each fit is shown from different orientation to approximate a three-dimensional view.



Electron density around HEM B 750:

$2mF_o-DF_c$ (at 0.7 rmsd) in gray
 mF_o-DF_c (at 3 rmsd) in purple (negative)
and green (positive)





6.5 Other polymers [\(i\)](#)

There are no such residues in this entry.